

V&V Reference Report

L2 ASCDS Version : 7.6.9

Observation 61550 - L2 Version 001
Chandra X-Ray Center

L2 Processing Date : Dec 14 2006

Contents

1	Front	2
2	OBI	3
2.1	OBI	3
2.1.1	Images	3
2.1.2	Bias	3
2.1.3	Parameters	4
2.1.4	Events	4
2.2	Compared Parameters	5
2.3	Aspect	6
2.4	Star Slots	8
2.5	FID Slots	8
A	Summary	9
A.1	Status	9
A.2	Comments	9

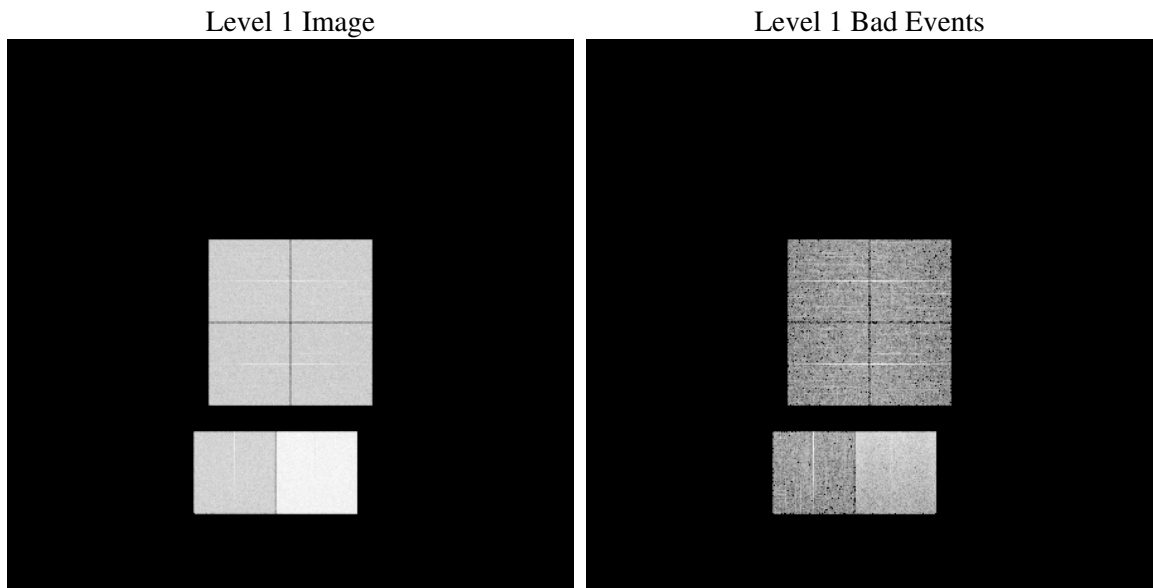
1 Front

seq_num	
obs_id	61550
title	ACIS-012367 diagnostics
observer	CHANDRA engineering request/realtime commanding
object	
dtcycle	0
cycle	P
ra_targ	0.0
dec_targ	0.0
ra_nom	357.97439175896
dec_nom	13.014101499838
roll_nom	117.80406547925
revision	2
ontime	7349.7605824023
livetime	7256.6934884135
ontime0	2886.0451903343
ontime1	2912.8570312709
ontime2	2737.040188238
ontime3	2763.7698096931
ontime6	3048.2202303708
ontime7	7349.7605824023
l2events	1298927

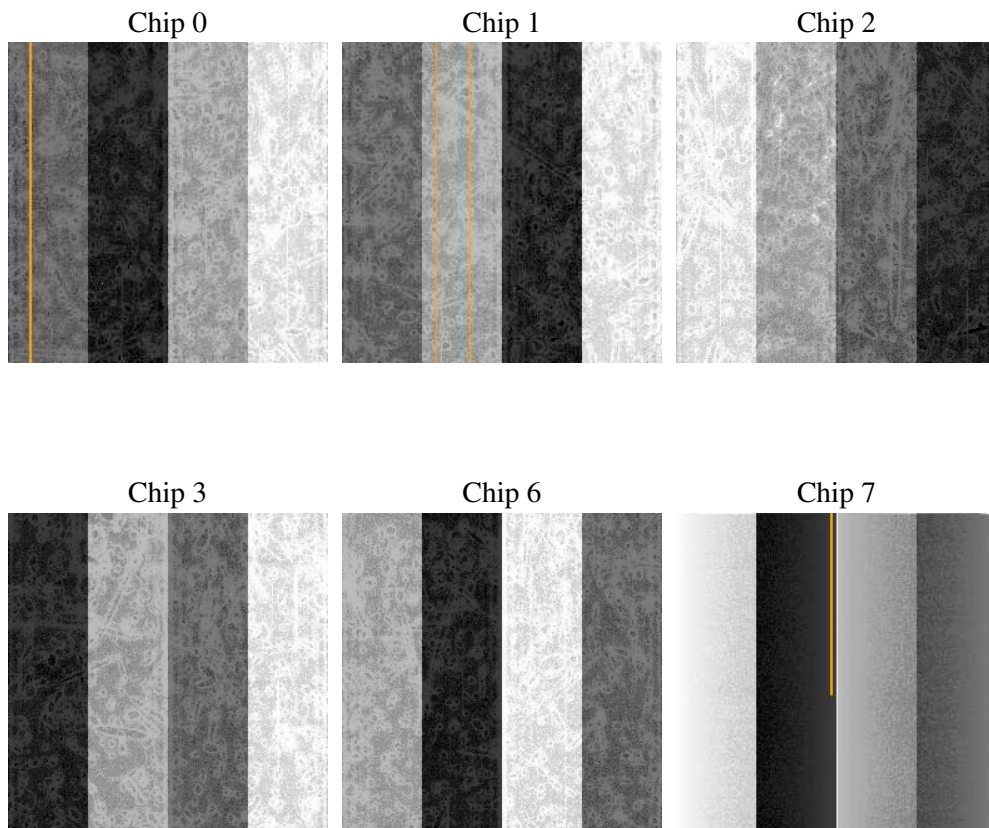
2 OBI

2.1 OBI

2.1.1 Images



2.1.2 Bias



2.1.3 Parameters

obi_num	0
ascdsver	7.6.9
caldsver	3.2.4
date	2006-12-14T16:48:52
revision	2

sched_exp_time	0.0
ontime	7451.0664570034
ontime0	2923.4147130996
ontime1	2949.3430828601
ontime2	2777.5686410815
ontime3	2800.2558612823
ontime6	3088.7076731324
ontime7	7451.0664570034
l1events	1545474

2.1.4 Events

	ccd 0	ccd 1	ccd 2	ccd 3	ccd 6	ccd 7
level 1 events	203175	206023	195608	196902	224267	519499
rejected events	25183	25249	24983	25068	26924	64801
rejected %	12%	12%	12%	12%	12%	12%

	ccd 0	ccd 1	ccd 2	ccd 3	ccd 6	ccd 7
grade 0 events	99469	101138	96301	97600	108780	83779
	48%	49%	49%	49%	48%	16%
grade 1 events	508	477	495	523	557	189
	0%	0%	0%	0%	0%	0%
grade 2 events	31789	32278	30934	30440	34686	140195
	15%	15%	15%	15%	15%	26%
grade 3 events	11472	11467	10616	10930	12411	33998
	5%	5%	5%	5%	5%	6%
grade 4 events	11230	11645	10622	10842	12117	33490
	5%	5%	5%	5%	5%	6%
grade 5 events	1610	1657	1609	1540	1870	8148
	0%	0%	0%	0%	0%	1%
grade 6 events	26432	26631	24725	24399	31903	169722
	13%	12%	12%	12%	14%	32%
grade 7 events	20665	20730	20306	20628	21943	49978
	10%	10%	10%	10%	9%	9%

2.2 Compared Parameters

Parameter	Planned	Actual	Parameter	Planned	Actual
Instrument	ACIS	ACIS	Obspar format version number	6	6
Detector	ACIS-012367	ACIS-012367	Obspar file type	PREDICTED	ACTUAL
Grating	NONE	NONE	Obspar update status	NONE	UPDATED
Data mode	FAINT	FAINT	On-chip summing requested	N	N
Observation mode	SECONDARY	SECONDARY	Subarray requested	NONE	NONE
Pointing RA	0	357.9743917589575	Alternating exposures requested	N	N
Pointing Dec	0	13.01410149983751	Primary exposure time	0.000000	3.2
Pointing Roll	0.0	117.8040654792546			
SIM focus pos (mm)	-0.782348	-0.6828225247311905			
SIM defocus (mm)	0	0.8505141146731063			
SIM translation stage pos (mm)	-233.592463	250.466033080201			
SIM translation stage offset (mm)	0	-0.01005468664627074			
Observation start time	111283535.65	111283534.88134			
Observation start date	2001-07-12T00:05:36	2001-07-12T00:05:34			
Observation end time	111305700.251	111305699.48221			
Observation end date	2001-07-12T06:15:00	2001-07-12T06:14:59			
Read mode	TIMED	TIMED			

2.3 Aspect

2.4 Star Slots

2.5 FID Slots

A Summary

A.1 Status

V&V Scientist	Beth Sundheim
V&V Date (YYYY-MM-DD)	2006.12.14
V&V Edition	1
V&V Disposition and Status	OK
V&V Charge Time	7.34976058

A.2 Comments

Focal plane temperature is warmer than -118.7 C degrees during the first ~4 ksec of this observation.