

V&V Reference Report

L2 ASCDS Version : 7.6.10

Observation 61410 - L2 Version 001
Chandra X-Ray Center

L2 Processing Date : Jan 12 2007

Contents

1	Front	2
2	OBI	3
2.1	OBI	3
2.1.1	Images	3
2.1.2	Bias	3
2.1.3	Parameters	4
2.1.4	Events	4
2.2	Compared Parameters	5
2.3	Star Slots	6
2.4	FID Slots	6
A	Summary	7
A.1	Status	7
A.2	Comments	7

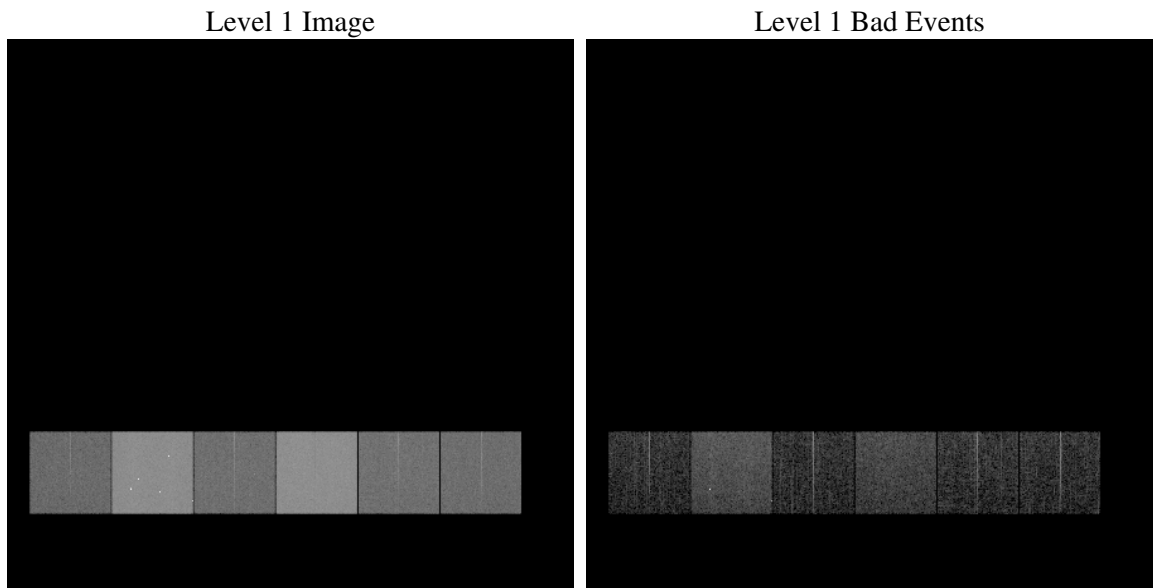
1 Front

seq_num	
obs_id	61410
title	ACIS-456789 diagnostics
observer	CHANDRA engineering request/realtime commanding
object	
dtcycle	0
cycle	P
ra_targ	0.0
dec_targ	0.0
ra_nom	123.98488936039
dec_nom	35.025813270906
roll_nom	82.887175353872
revision	2
ontime	6555.0283819586
livetime	6472.024665622
ontime4	2474.6178605109
ontime5	6940.7029720545
ontime6	2682.0442006439
ontime7	6555.0283819586
ontime8	2766.3108119369
ontime9	2626.9462417364
l2events	1298569

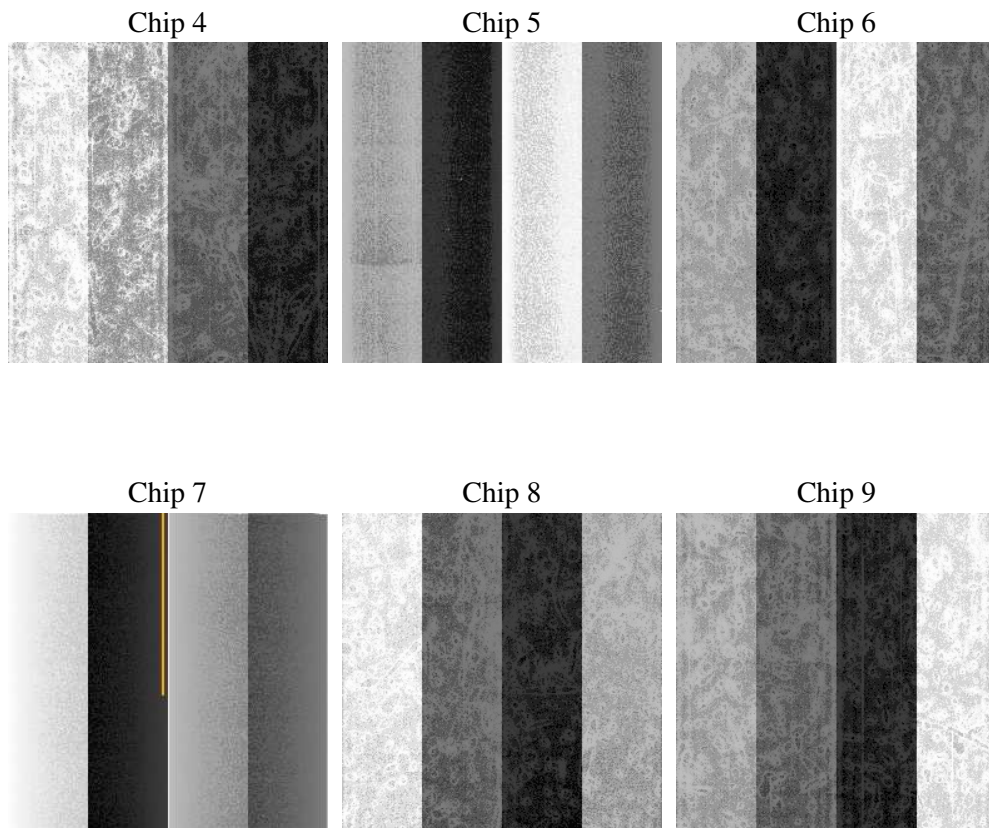
2 OBI

2.1 OBI

2.1.1 Images



2.1.2 Bias



2.1.3 Parameters

obi_num	1
ascdsver	7.6.10
caldsver	3.3.0
date	2007-01-12T12:17:29
revision	2

sched_exp_time	0.0
ontime	6555.0283819586
ontime4	2474.6178605109
ontime5	6940.7029720545
ontime6	2682.0442006439
ontime7	6555.0283819586
ontime8	2766.3108119369
ontime9	2626.9462417364
l1events	1543121

2.1.4 Events

	ccd 4	ccd 5	ccd 6	ccd 7	ccd 8	ccd 9
level 1 events	158406	414375	182907	424599	189921	172913
rejected events	21822	55210	22441	37517	24199	22266
rejected %	13%	13%	12%	8%	12%	12%

	ccd 4	ccd 5	ccd 6	ccd 7	ccd 8	ccd 9
grade 0 events	77295	83992	88506	98983	91904	83584
	48%	20%	48%	23%	48%	48%
grade 1 events	412	361	402	256	433	403
	0%	0%	0%	0%	0%	0%
grade 2 events	24900	135408	28106	85770	29536	26589
	15%	32%	15%	20%	15%	15%
grade 3 events	8264	21016	9798	39646	10273	9439
	5%	5%	5%	9%	5%	5%
grade 4 events	8207	20526	9573	39507	10366	9335
	5%	4%	5%	9%	5%	5%
grade 5 events	1304	9721	1586	7089	1689	1493
	0%	2%	0%	1%	0%	0%
grade 6 events	18635	100849	25657	126083	24654	22806
	11%	24%	14%	29%	12%	13%
grade 7 events	19389	42502	19279	27265	21066	19264
	12%	10%	10%	6%	11%	11%

2.2 Compared Parameters

Parameter	Planned	Actual	Parameter	Planned	Actual
Instrument	ACIS	ACIS	Obspar format version number	6	6
Detector	ACIS-456789	ACIS-456789	Obspar file type	PREDICTED	ACTUAL
Grating	NONE	NONE	Obspar update status	NONE	UPDATED
Data mode	FAINT	FAINT	On-chip summing requested	N	N
Observation mode	SECONDARY	SECONDARY	Subarray requested	NONE	NONE
Pointing RA	0	123.9848893603883	Alternating exposures requested	N	N
Pointing Dec	0	35.02581327090648	Primary exposure time	3.2	3.2
Pointing Roll	0.0	82.88717535387238			
SIM focus pos (mm)	-0.684267	-0.7809083437167272			
SIM defocus (mm)	0	0.7524282956875696			
SIM translation stage pos (mm)	-190.132523	250.466033080201			
SIM translation stage offset (mm)	0	-0.01005468664627074			
Observation start time	122022536.924332	122022536.15587			
Observation start date	2001-11-13T07:08:57	2001-11-13T07:08:56			
Observation end time	122043846.675184	122043845.90672			
Observation end date	2001-11-13T13:04:07	2001-11-13T13:04:05			
Read mode	TIMED	TIMED			

2.3 Star Slots

2.4 FID Slots

A Summary

A.1 Status

V&V Scientist	Beth Sundheim
V&V Date (YYYY-MM-DD)	2007.01.12
V&V Edition	1
V&V Disposition and Status	OK
V&V Charge Time	6.55502838

A.2 Comments

Focal plane temperature is warmer than -118.7 C degrees during the entire observation. This temperature is the upper limit of the verified ACIS calibration for the front-illuminated chips.