

V&V Reference Report

L2 ASCDS Version : 7.6.8.1

Observation 61250 - L2 Version 001
Chandra X-Ray Center

L2 Processing Date : Sep 9 2006

Contents

1	Front	2
2	OBI	3
2.1	OBI	3
2.1.1	Images	3
2.1.2	Bias	3
2.1.3	Parameters	4
2.1.4	Events	4
2.2	Compared Parameters	5
2.3	Aspect	6
2.4	Star Slots	8
2.5	FID Slots	8
A	Summary	9
A.1	Status	9
A.2	Comments	9

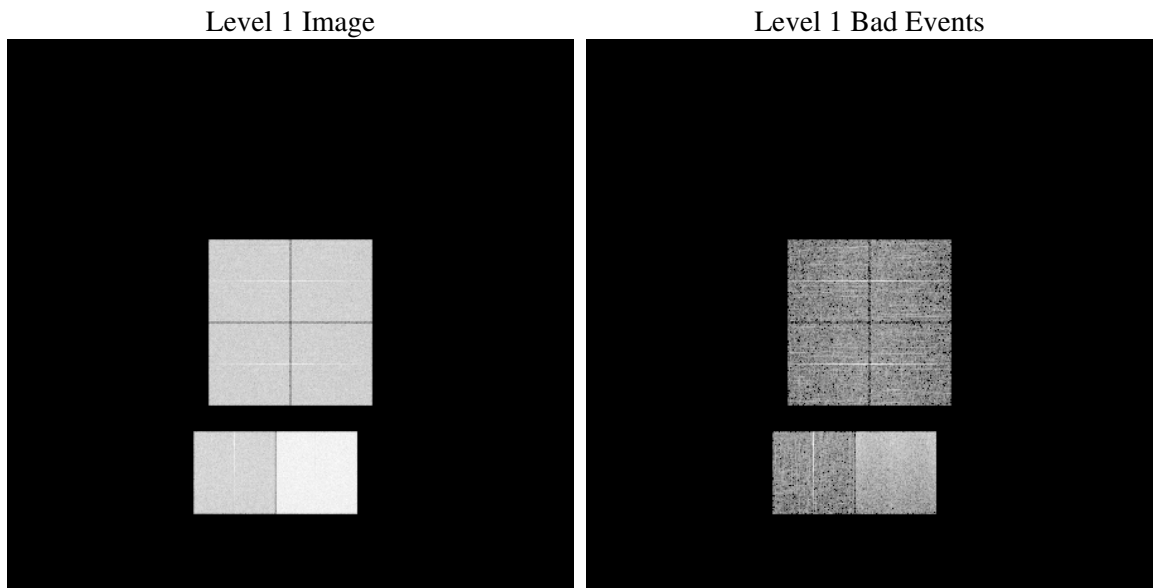
1 Front

seq_num	
obs_id	61250
title	ACIS-012367 diagnostics
observer	CHANDRA engineering request/realtime commanding
object	
dtcycle	0
cycle	P
ra_targ	0.0
dec_targ	0.0
ra_nom	181.89297205401
dec_nom	3.572243332666
roll_nom	223.02447850815
revision	2
ontime	7791.3760046959
livetime	7692.716910321
ontime0	3270.2533025742
ontime1	3254.0892623365
ontime2	3182.8282890022
ontime3	3153.4948887974
ontime6	3468.0785268694
ontime7	7791.3760046959
l2events	1217247

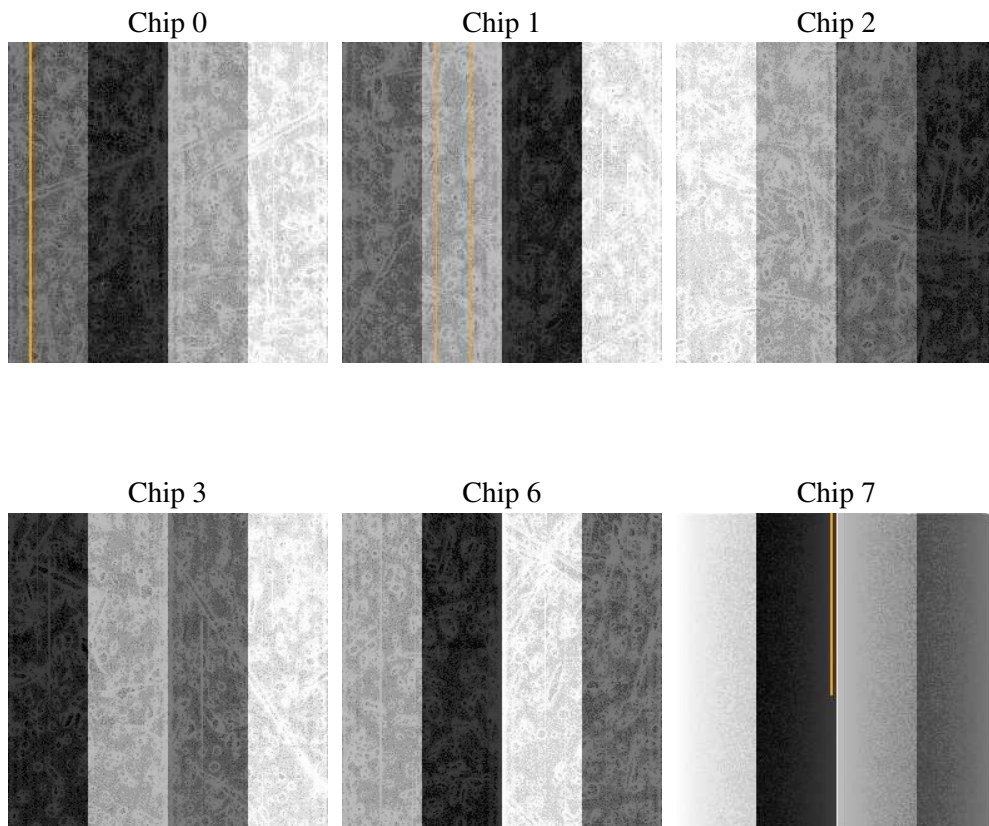
2 OBI

2.1 OBI

2.1.1 Images



2.1.2 Bias



2.1.3 Parameters

obi_num	0
ascdsver	7.6.8.1
caldsver	3.2.3
date	2006-09-09T10:31:26
revision	2

sched_exp_time	0.0
ontime	7794.60794577
ontime0	3273.444203645
ontime1	3257.2391234189
ontime2	3185.9371100813
ontime3	3156.7678698748
ontime6	3471.1463079453
ontime7	7794.60794577
l1events	1441234

2.1.4 Events

	ccd 0	ccd 1	ccd 2	ccd 3	ccd 6	ccd 7
level 1 events	192077	191715	190905	188843	214424	463270
rejected events	22465	22856	23546	23431	25502	54043
rejected %	11%	11%	12%	12%	11%	11%

	ccd 0	ccd 1	ccd 2	ccd 3	ccd 6	ccd 7
grade 0 events	93617	93344	93050	92085	102945	76875
	48%	48%	48%	48%	48%	16%
grade 1 events	471	542	519	460	549	187
	0%	0%	0%	0%	0%	0%
grade 2 events	29952	29585	29464	29093	33047	122137
	15%	15%	15%	15%	15%	26%
grade 3 events	10724	10800	10443	10555	11540	31238
	5%	5%	5%	5%	5%	6%
grade 4 events	10743	10731	10626	10629	11834	30648
	5%	5%	5%	5%	5%	6%
grade 5 events	1587	1610	1587	1642	1864	7311
	0%	0%	0%	0%	0%	1%
grade 6 events	24773	24599	24077	23321	30135	148542
	12%	12%	12%	12%	14%	32%
grade 7 events	20210	20504	21139	21058	22510	46332
	10%	10%	11%	11%	10%	10%

2.2 Compared Parameters

Parameter	Planned	Actual	Parameter	Planned	Actual
Instrument	ACIS	ACIS	Obspar format version number	6	6
Detector	ACIS-012367	ACIS-012367	Obspar file type	PREDICTED	ACTUAL
Grating	NONE	NONE	Obspar update status	NONE	UPDATED
Data mode	FAINT	FAINT	On-chip summing requested	N	N
Observation mode	SECONDARY	SECONDARY	Subarray requested	NONE	NONE
Pointing RA	0	181.8929720540129	Alternating exposures requested	N	N
Pointing Dec	0	3.57224333266597	Primary exposure time	3.2	3.2
Pointing Roll	0.0	223.0244785081522			
SIM focus pos (mm)	-0.782348	-0.6828225247311905			
SIM defocus (mm)	0	0.8505141146731063			
SIM translation stage pos (mm)	-233.592463	250.466033080201			
SIM translation stage offset (mm)	0	-0.01005468664627074			
Observation start time	133867997.051075	133867996.28263			
Observation start date	2002-03-30T09:33:17	2002-03-30T09:33:16			
Observation end time	133894733.152157	133894732.38371			
Observation end date	2002-03-30T16:58:53	2002-03-30T16:58:52			
Read mode	TIMED	TIMED			

2.3 Aspect

2.4 Star Slots

2.5 FID Slots

A Summary

A.1 Status

V&V Scientist	Jen Lauer
V&V Date (YYYY-MM-DD)	2006.09.10
V&V Edition	1
V&V Disposition and Status	OK
V&V Charge Time	7.791376

A.2 Comments