

V&V Reference Report

L2 ASCDS Version : 7.6.9

Observation 61170 - L2 Version 001
Chandra X-Ray Center

L2 Processing Date : Sep 19 2006

Contents

1	Front	2
2	OBI	3
2.1	OBI	3
2.1.1	Images	3
2.1.2	Bias	3
2.1.3	Parameters	4
2.1.4	Events	4
2.2	Compared Parameters	5
2.3	Aspect	6
2.4	Star Slots	8
2.5	FID Slots	8
A	Summary	9
A.1	Status	9
A.2	Comments	9

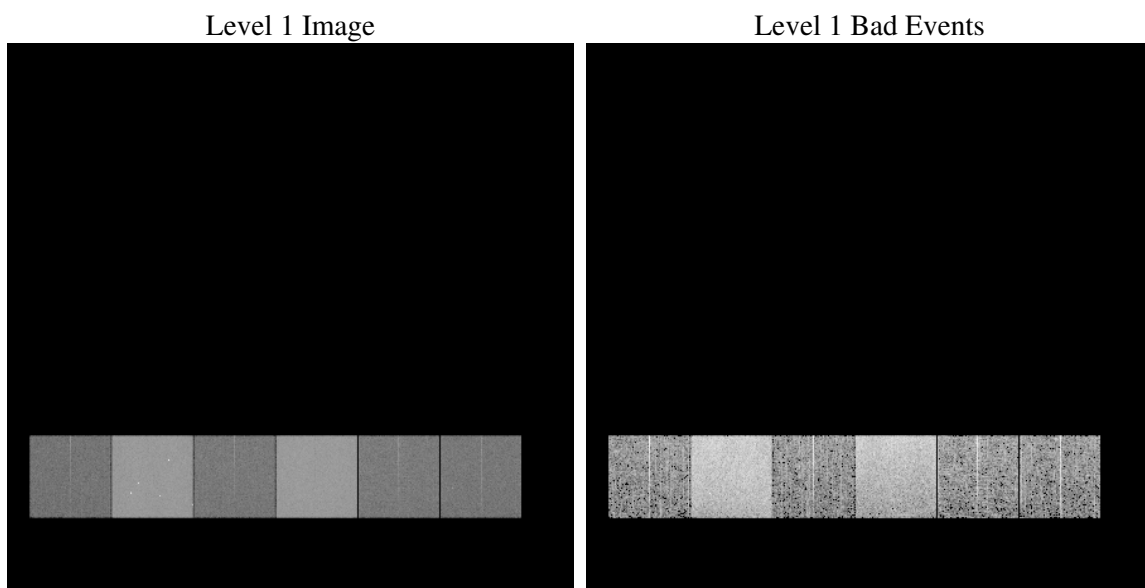
1 Front

seq_num	
obs_id	61170
title	ACIS-456789 diagnostics
observer	CHANDRA engineering request/realtime commanding
object	
dtcycle	0
cycle	P
ra_targ	0.0
dec_targ	0.0
ra_nom	180.00527983194
dec_nom	-5.7281217608042
roll_nom	247.77821495086
revision	2
ontime	7071.7786560059
livetime	6982.2315365496
ontime4	2540.9724733531
ontime5	7593.6142609417
ontime6	2761.3513243794
ontime7	7071.7786560059
ontime8	2858.5938245952
ontime9	2732.059133023
l2events	1194770

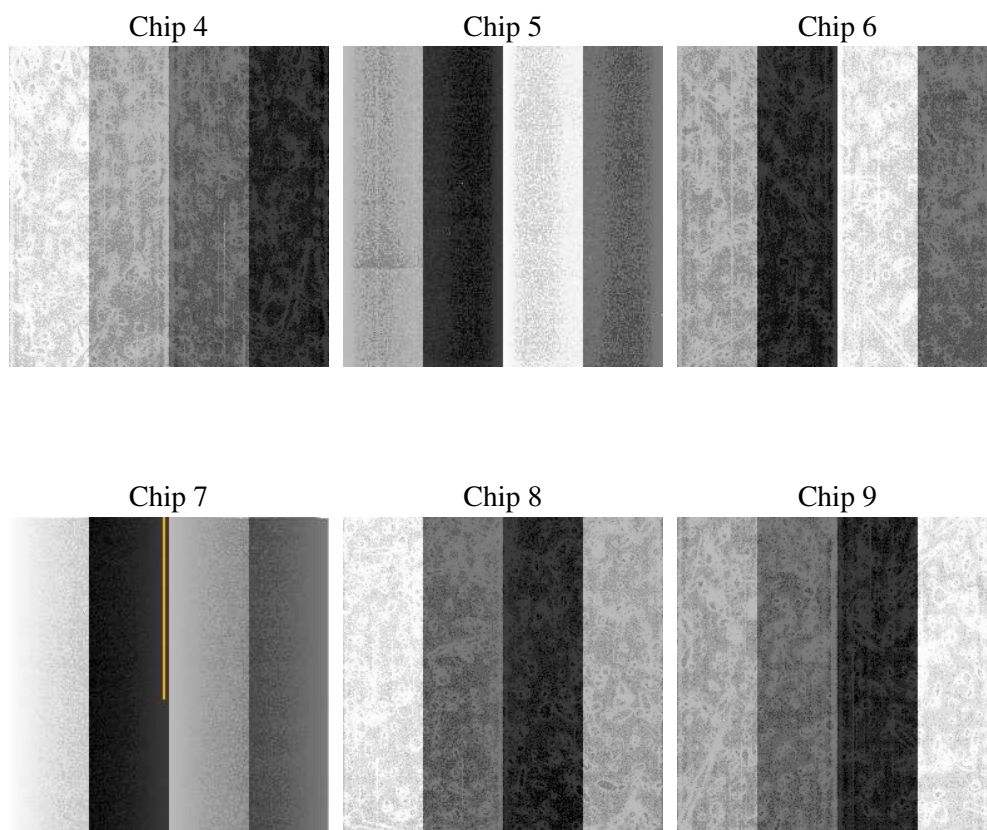
2 OBI

2.1 OBI

2.1.1 Images



2.1.2 Bias



2.1.3 Parameters

obi_num	1
ascdsver	7.6.9
caldsver	3.2.3
date	2006-09-19T20:24:02
revision	2

sched_exp_time	0.0
ontime	7071.8719171882
ontime4	2540.9724733531
ontime5	7593.6664821208
ontime6	2761.3625055552
ontime7	7071.8719171882
ontime8	2858.5938245952
ontime9	2732.1934342086
l1events	1445808

2.1.4 Events

	ccd 4	ccd 5	ccd 6	ccd 7	ccd 8	ccd 9
level 1 events	143031	399932	164492	407178	172834	158341
rejected events	20628	62118	20519	49545	23143	20928
rejected %	14%	15%	12%	12%	13%	13%

	ccd 4	ccd 5	ccd 6	ccd 7	ccd 8	ccd 9
grade 0 events	69121	43967	78488	67806	81896	75136
	48%	10%	47%	16%	47%	47%
grade 1 events	366	191	393	155	413	369
	0%	0%	0%	0%	0%	0%
grade 2 events	21669	159771	25150	106510	26370	24178
	15%	39%	15%	26%	15%	15%
grade 3 events	7495	11485	8774	27538	9656	8344
	5%	2%	5%	6%	5%	5%
grade 4 events	7473	11338	8922	26998	9502	8489
	5%	2%	5%	6%	5%	5%
grade 5 events	1256	6940	1434	6812	1702	1509
	0%	1%	0%	1%	0%	0%
grade 6 events	16645	111253	22639	128781	22267	21266
	11%	27%	13%	31%	12%	13%
grade 7 events	19006	54987	18692	42578	21028	19050
	13%	13%	11%	10%	12%	12%

2.2 Compared Parameters

Parameter	Planned	Actual	Parameter	Planned	Actual
Instrument	ACIS	ACIS	Obspar format version number	6	6
Detector	ACIS-456789	ACIS-456789	Obspar file type	PREDICTED	ACTUAL
Grating	NONE	NONE	Obspar update status	NONE	UPDATED
Data mode	FAINT	FAINT	On-chip summing requested	N	N
Observation mode	SECONDARY	SECONDARY	Subarray requested	NONE	NONE
Pointing RA	0	180.0052798319439	Alternating exposures requested	N	N
Pointing Dec	0	-5.728121760804231	Primary exposure time	3.2	3.2
Pointing Roll	0.0	247.7782149508577			
SIM focus pos (mm)	-0.684267	-0.7809083437167272			
SIM defocus (mm)	0	0.7524282956875696			
SIM translation stage pos (mm)	-190.132523	250.466033080201			
SIM translation stage offset (mm)	0	-0.01005468664627074			
Observation start time	140043751.708951	140043750.68424			
Observation start date	2002-06-09T21:02:32	2002-06-09T21:02:30			
Observation end time	140075719.410259	140075718.38555			
Observation end date	2002-06-10T05:55:19	2002-06-10T05:55:18			
Read mode	TIMED	TIMED			

2.3 Aspect

2.4 Star Slots

2.5 FID Slots

A Summary

A.1 Status

V&V Scientist	Jen Lauer
V&V Date (YYYY-MM-DD)	2006.09.20
V&V Edition	1
V&V Disposition and Status	OK
V&V Charge Time	7.07177865

A.2 Comments