

V&V Reference Report

L2 ASCDS Version : 7.6.8.1

Observation 60780 - L2 Version 001
Chandra X-Ray Center

L2 Processing Date : Aug 5 2006

Contents

1	Front	2
2	OBI	3
2.1	OBI	3
2.1.1	Images	3
2.1.2	Bias	3
2.1.3	Parameters	4
2.1.4	Events	4
2.2	Compared Parameters	5
2.3	Aspect	6
2.4	Star Slots	8
2.5	FID Slots	8
A	Summary	9
A.1	Status	9
A.2	Comments	9

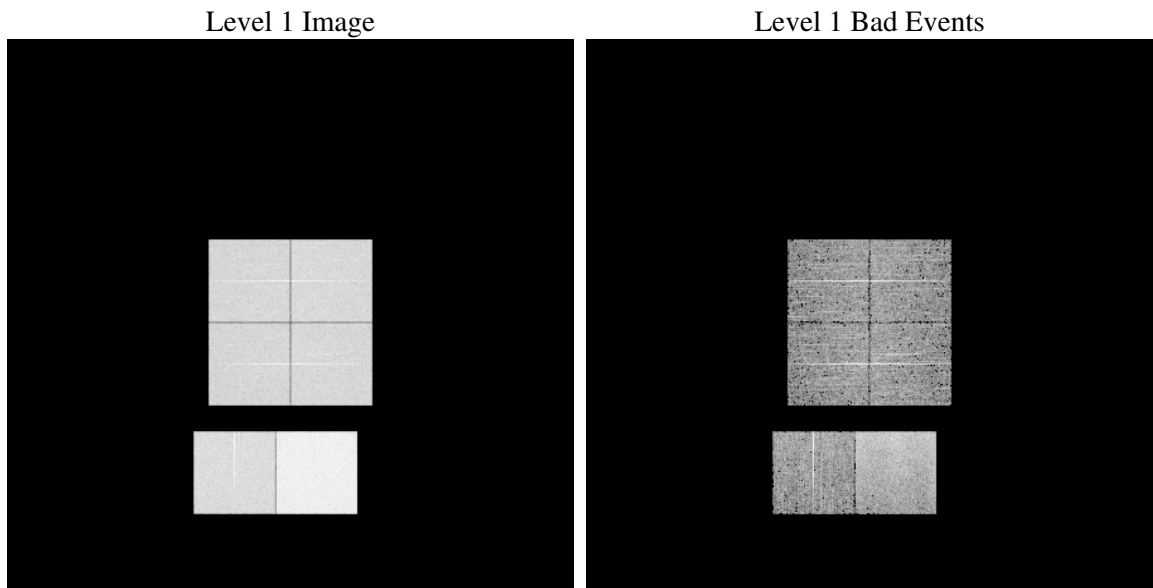
1 Front

seq_num	
obs_id	60780
title	ACIS-012367 diagnostics
observer	CHANDRA engineering request/realtime commanding
object	
dtcycle	0
cycle	P
ra_targ	0.0
dec_targ	0.0
ra_nom	170.00126037993
dec_nom	9.9714458234472
roll_nom	239.57574554064
revision	2
ontime	7795.1999709606
livetime	7696.4924552224
ontime0	4244.5548564792
ontime1	4435.8152333796
ontime2	4103.7204490602
ontime3	4220.3959570229
ontime6	4601.1880048513
ontime7	7795.1999709606
l2events	1176604

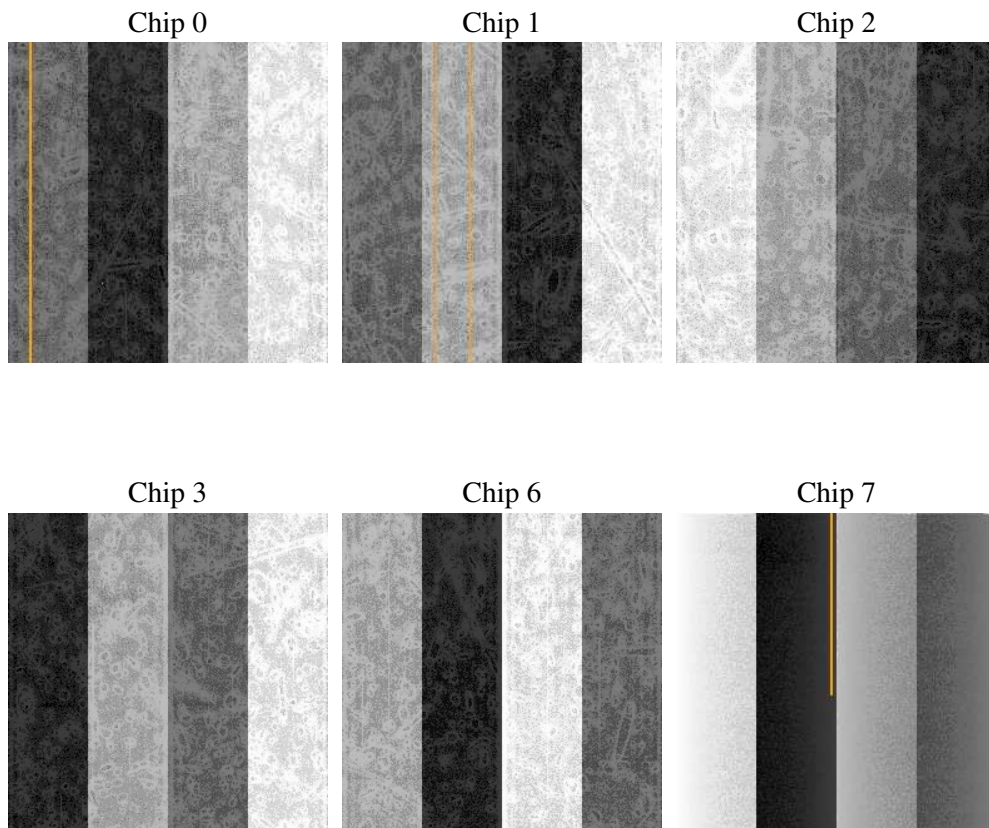
2 OBI

2.1 OBI

2.1.1 Images



2.1.2 Bias



2.1.3 Parameters

obi_num	0
ascdsver	7.6.8.1
caldsver	3.2.2
date	2006-08-05T04:03:58
revision	2

sched_exp_time	0.0
ontime	7797.8642392457
ontime0	4245.7470981479
ontime1	4436.966435045
ontime2	4106.3847173452
ontime3	4223.0602253079
ontime6	4602.2571265399
ontime7	7797.8642392457
l1events	1426985

2.1.4 Events

	ccd 0	ccd 1	ccd 2	ccd 3	ccd 6	ccd 7
level 1 events	202057	211391	198287	205492	229823	379935
rejected events	27820	28128	27651	28956	30929	52319
rejected %	13%	13%	13%	14%	13%	13%

	ccd 0	ccd 1	ccd 2	ccd 3	ccd 6	ccd 7
grade 0 events	96210	100608	95632	99334	107657	59652
	47%	47%	48%	48%	46%	15%
grade 1 events	525	496	560	596	484	127
	0%	0%	0%	0%	0%	0%
grade 2 events	30362	32635	28686	29689	34170	99669
	15%	15%	14%	14%	14%	26%
grade 3 events	11107	11717	11116	11526	12460	24205
	5%	5%	5%	5%	5%	6%
grade 4 events	11195	11471	10958	11387	12478	23815
	5%	5%	5%	5%	5%	6%
grade 5 events	1912	2049	1787	2036	2236	6684
	0%	0%	0%	0%	0%	1%
grade 6 events	25363	26832	24244	24600	32129	120275
	12%	12%	12%	11%	13%	31%
grade 7 events	25383	25583	25304	26324	28209	45508
	12%	12%	12%	12%	12%	11%

2.2 Compared Parameters

Parameter	Planned	Actual	Parameter	Planned	Actual
Instrument	ACIS	ACIS	Obspar format version number	6	6
Detector	ACIS-012367	ACIS-012367	Obspar file type	PREDICTED	ACTUAL
Grating	NONE	NONE	Obspar update status	NONE	UPDATED
Data mode	FAINT	FAINT	On-chip summing requested	N	N
Observation mode	SECONDARY	SECONDARY	Subarray requested	NONE	NONE
Pointing RA	0	170.0012603799271	Alternating exposures requested	N	N
Pointing Dec	0	9.971445823447189	Primary exposure time	0.000000	3.2
Pointing Roll	0.0	239.5757455406425			
SIM focus pos (mm)	-0.782348	-0.6828225247311905			
SIM defocus (mm)	0	0.8505141146731063			
SIM translation stage pos (mm)	-233.592463	250.466033080201			
SIM translation stage offset (mm)	0	-0.01005468664627074			
Observation start time	166539439.060658	166539438.03593			
Observation start date	2003-04-12T12:57:19	2003-04-12T12:57:18			
Observation end time	166560467.961547	166560466.93682			
Observation end date	2003-04-12T18:47:48	2003-04-12T18:47:46			
Read mode	TIMED	TIMED			

2.3 Aspect

2.4 Star Slots

2.5 FID Slots

A Summary

A.1 Status

V&V Scientist	Beth Sundheim
V&V Date (YYYY-MM-DD)	2006.08.06
V&V Edition	1
V&V Disposition and Status	OK
V&V Charge Time	7.79519997

A.2 Comments