

V&V Reference Report

L2 ASCDS Version : 8.5.1

Observation 6070 - L2 Version 3
Chandra X-Ray Center

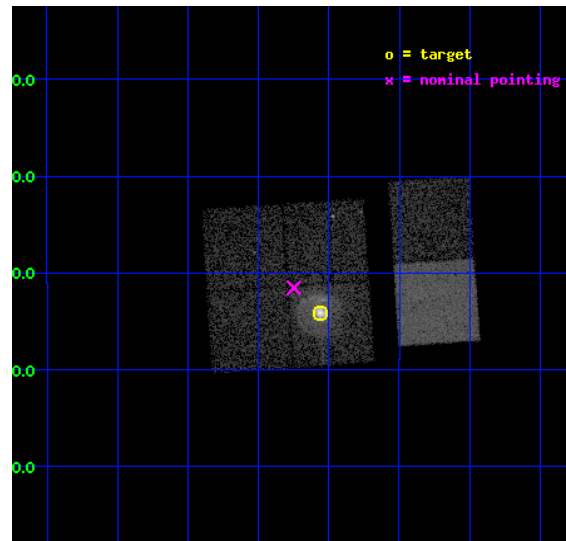
L2 Processing Date : Dec 17 2012

Contents

1	Front	2
2	OBI	3
2.1	OBI	3
2.1.1	Images	3
2.1.2	Bias	3
2.1.3	Parameters	4
2.1.4	Events	4
2.2	Compared Parameters	5
2.3	Aspect	6
2.4	Star Slots	9
2.4.1	Slot 3	9
2.4.2	Slot 4	10
2.4.3	Slot 5	11
2.4.4	Slot 6	12
2.4.5	Slot 7	13
2.5	FID Slots	14
2.5.1	Slot 0	14
2.5.2	Slot 1	15
2.5.3	Slot 2	16
A	Summary	17
A.1	Status	17
A.2	Comments	17

1 Front

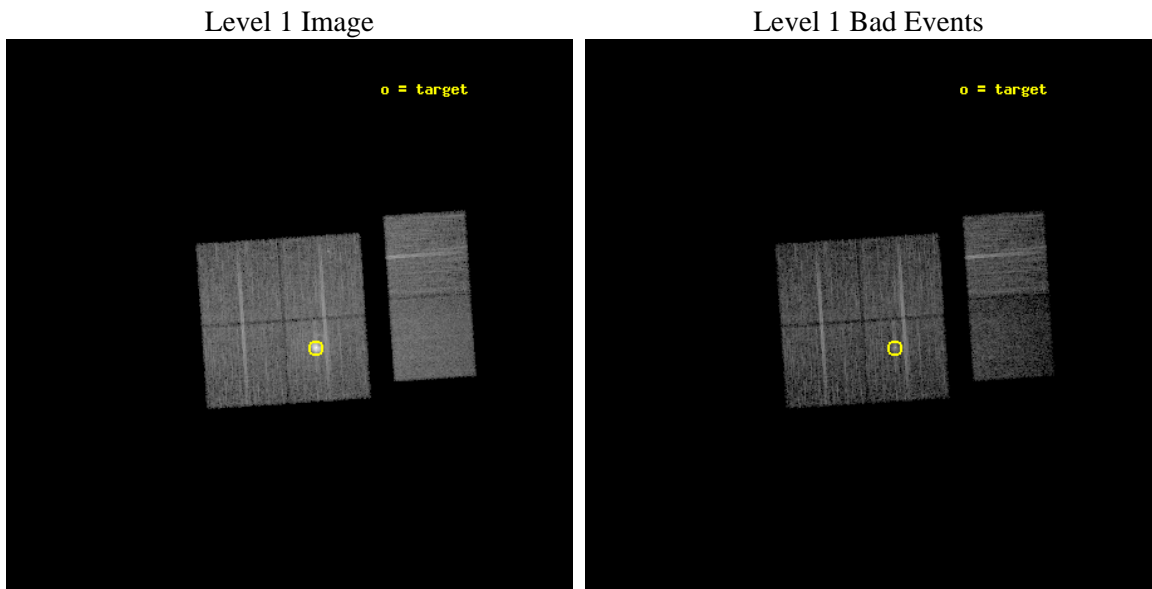
seq_num	590397	Sequence number
obs_id	6070	Observation id
title	AO6A Observations of the Standard Candles Cas A and G21.5-09	Propo
observer	Dr. CXC Calibration	Principal investigator
object	G21.5-09[I3,-120,-2.5,2.5,0]	Source name
dtcycle	0	
cycle	P	events from which exps? Prim/Second/Both
ra_targ	278.389583	Observer's specified target RA [deg]
dec_targ	-10.568528	Observer's specified target Dec [deg]
ra_nom	278.43698531069	Nominal RA [deg]
dec_nom	-10.525743301813	Nominal Dec [deg]
roll_nom	86.174653385842	Nominal Roll [deg]
revision	3	Processing version of data
ontime	9555.1999644041	Sum of GTIs [s]
livetime	9434.2062690041	Livetime [s]
ontime0	9555.0880309343	Sum of GTIs [s]
ontime1	9555.1290709078	Sum of GTIs [s]
ontime2	9555.1701109111	Sum of GTIs [s]
ontime3	9555.1999644041	Sum of GTIs [s]
ontime6	9555.1999644041	Sum of GTIs [s]
ontime7	9555.1999644041	Sum of GTIs [s]
l2events	77339	Number of level 2 events



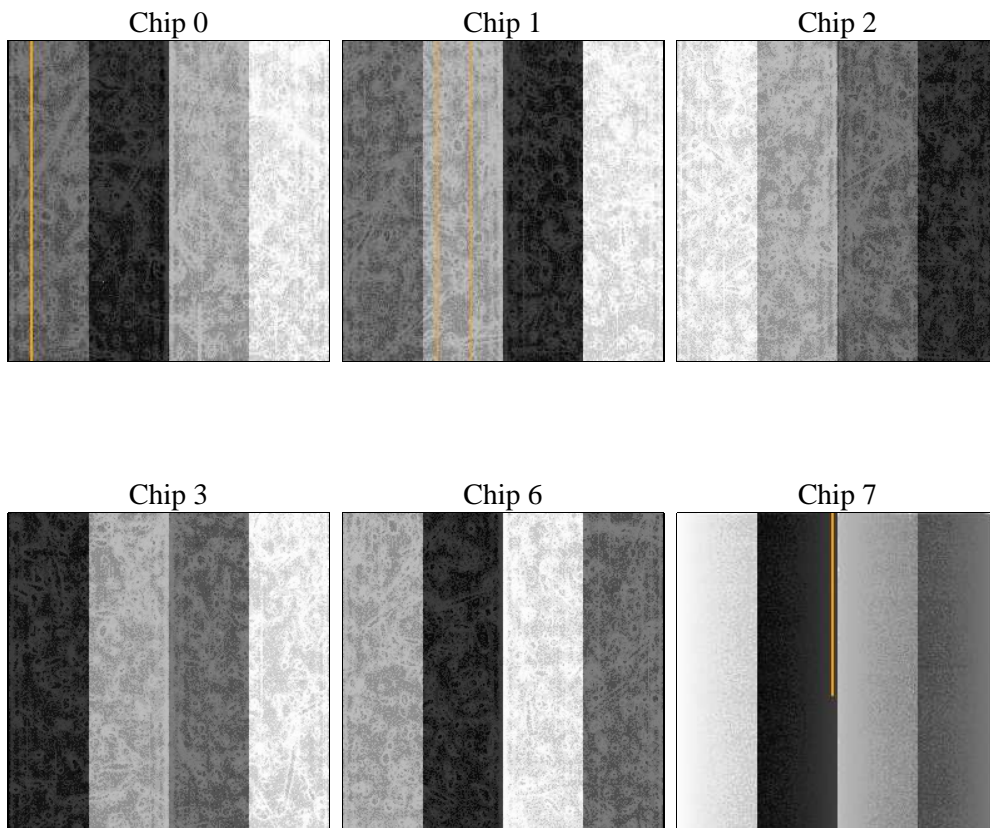
2 OBI

2.1 OBI

2.1.1 Images



2.1.2 Bias



2.1.3 Parameters

obi_num	0	Obi number	sched_exp_time	9800.000000	[s] Scheduled observation exposure time
ascdsver	8.5.1	Processing system revision	ontime	9555.1999644041	Sum of GTIs [s]
caldsver	4.5.5	 	ontime0	9555.0880309343	Sum of GTIs [s]
date	2012-12-17T19:10:02	Date and time of file creation	ontime1	9555.1290709078	Sum of GTIs [s]
revision	3	Processing version of data	ontime2	9555.1701109111	Sum of GTIs [s]
			ontime3	9555.1999644041	Sum of GTIs [s]
			ontime6	9555.1999644041	Sum of GTIs [s]
			ontime7	9555.1999644041	Sum of GTIs [s]
			l1events	360681	Number of level 1 events

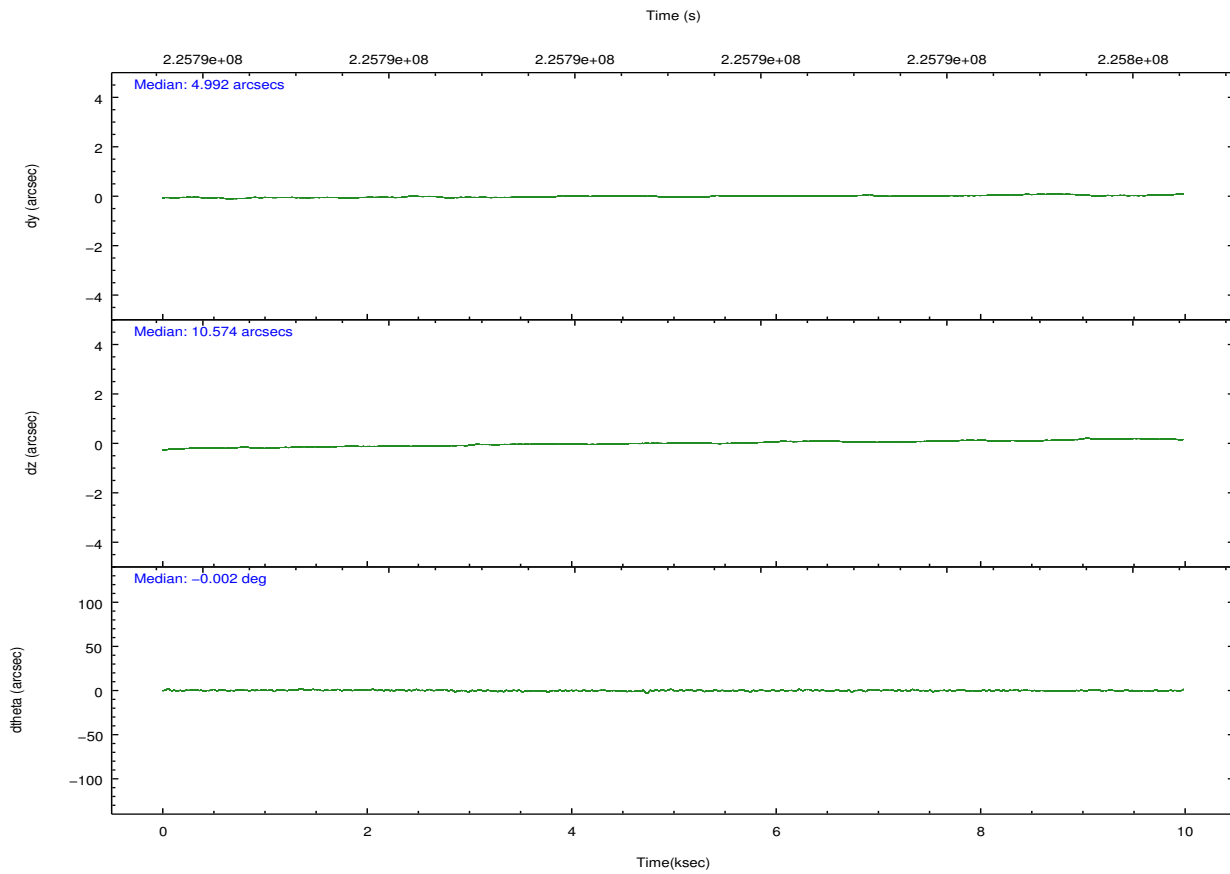
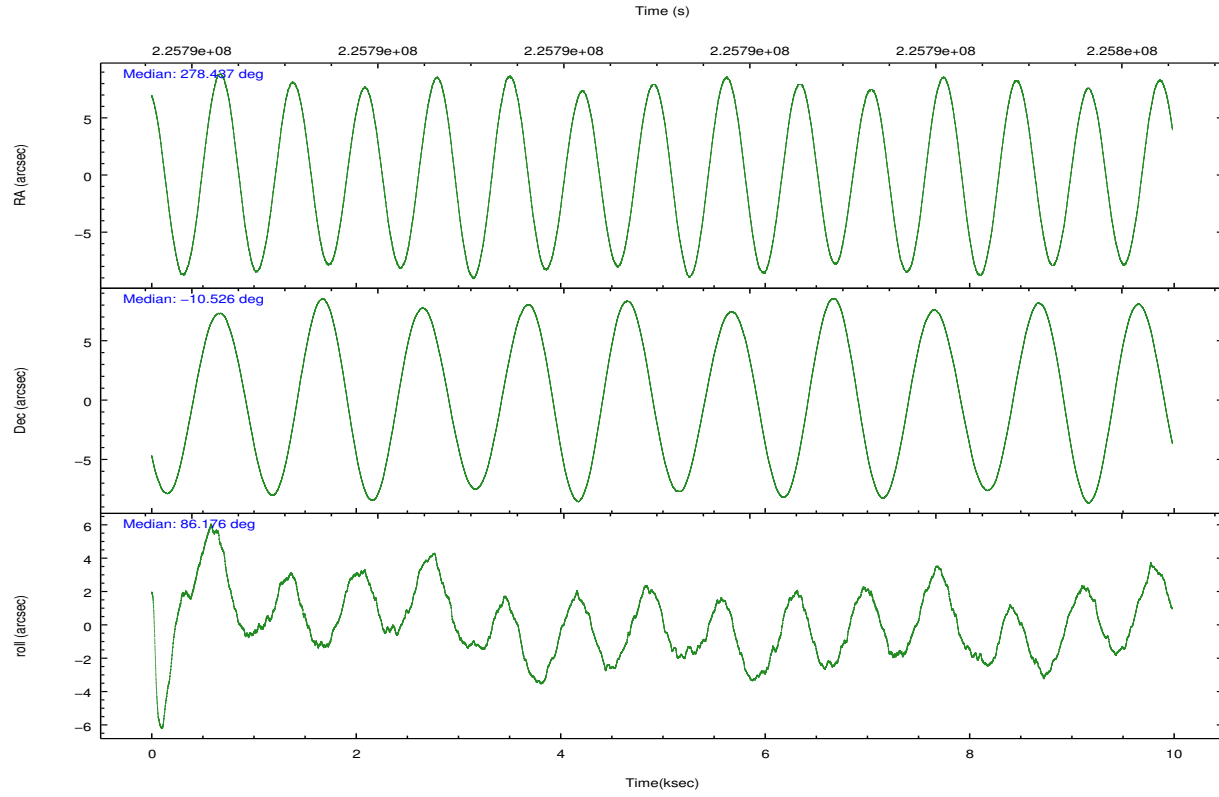
2.1.4 Events

	ccd 0	ccd 1	ccd 2	ccd 3	ccd 6	ccd 7		ccd 0	ccd 1	ccd 2	ccd 3	ccd 6	ccd 7
level 1 events	53397	51830	59576	84062	58479	53337	grade 0 events	2149	2258	2992	23343	2315	2568
rejected events	47611	45667	52935	49954	52475	27175		4%	4%	5%	27%	3%	4%
rejected %	89%	88%	88%	59%	89%	50%	grade 1 events	25	25	35	233	33	60
								0%	0%	0%	0%	0%	0%
							grade 2 events	1375	1339	1418	4815	1224	5678
								2%	2%	2%	5%	2%	10%
							grade 3 events	652	700	681	1851	657	2543
								1%	1%	1%	2%	1%	4%
							grade 4 events	532	682	586	1844	660	2524
								0%	1%	0%	2%	1%	4%
							grade 5 events	1757	1886	1608	2057	1897	5693
								3%	3%	2%	2%	3%	10%
							grade 6 events	1082	1185	970	2279	1149	12864
								2%	2%	1%	2%	1%	24%
							grade 7 events	45825	43755	51286	47640	50544	21407
								85%	84%	86%	56%	86%	40%

2.2 Compared Parameters

Parameter	Planned	Actual	Parameter	Planned	Actual
Instrument	ACIS	ACIS	Obspar format version number	7	7
Detector	ACIS-012367	ACIS-012367	Obspar file type	PREDICTED	ACTUAL
Grating	NONE	NONE	Obspar update status	NONE	UPDATED
Data mode	VFAINT	VFAINT	Number of optional ACIS chips dropped	0	0
Observation mode	POINTING	POINTING	On-chip summing requested	N	N
[deg] Pointing RA	278.449364	278.4369853106928	Subarray requested	NONE	NONE
[deg] Pointing Dec	-10.550282	-10.52574330181252	Alternating exposures requested	N	N
[deg] Pointing Roll	85.968234	86.17465338584199	[s] Primary exposure time	0.000000	3.2
[s] Window start time (MET)	225331264.184000	225331264.184000			
[s] Window stop time (MET)	228614464.184000	228614464.184000			
[mm] SIM focus pos	-0.782348	-0.7809083437167272			
[mm] SIM defocus	0	0.001439871863259334			
[mm] SIM translation stage pos	-233.592463	-233.5874344608287			
[mm] SIM translation stage offset	0	-0.005018542100998502			
[s] Observation start time (MET)	225786247.184000	225785871.0191			
Observation start date	2005-02-26T06:23:03	2005-02-26T06:17:51			
[s] Observation end time (MET)	225796047.184000	225796196.86957			
Observation end date	2005-02-26T09:06:23	2005-02-26T09:09:56			
Read mode	TIMED	TIMED			

2.3 Aspect

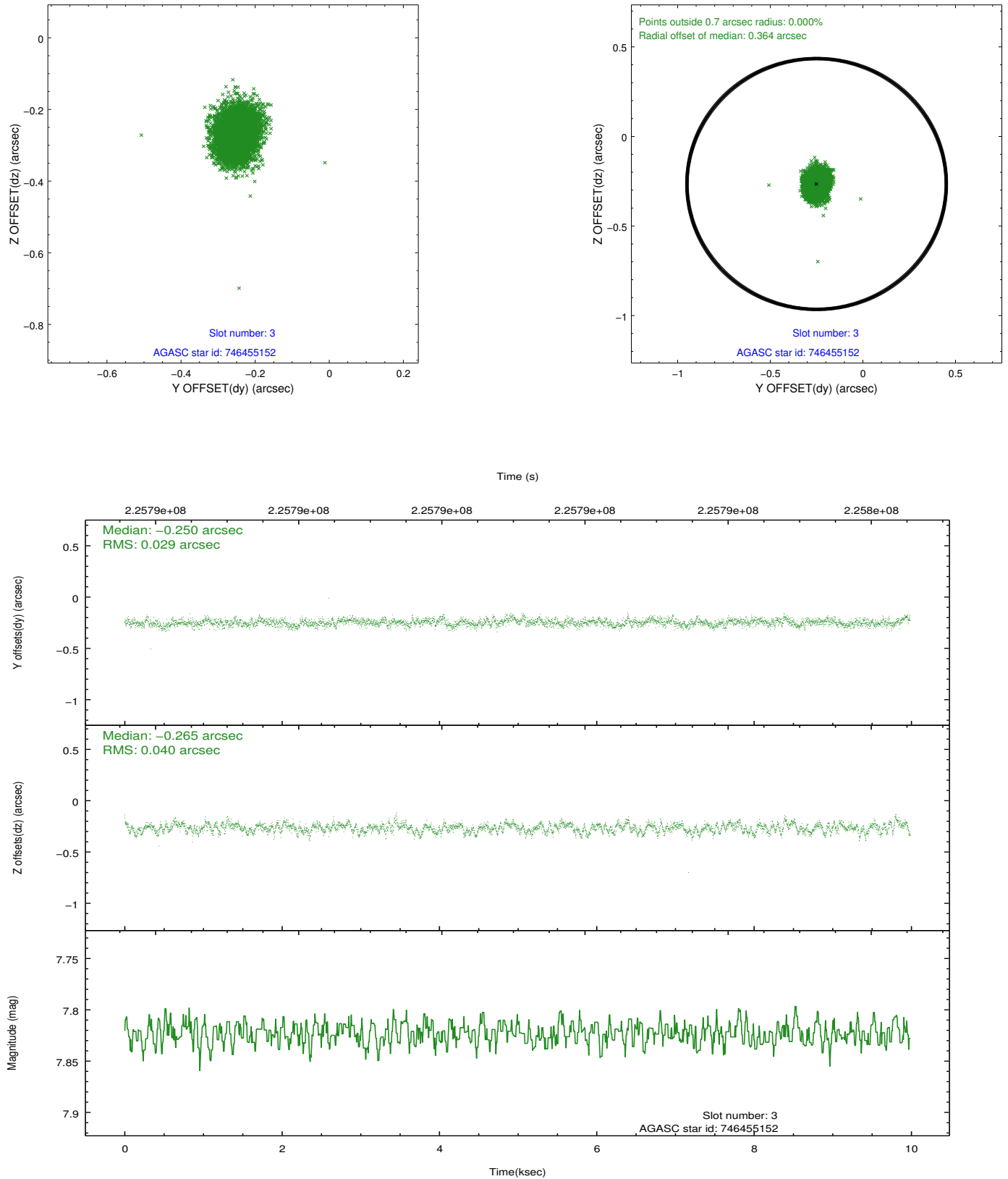


Slot Statistics

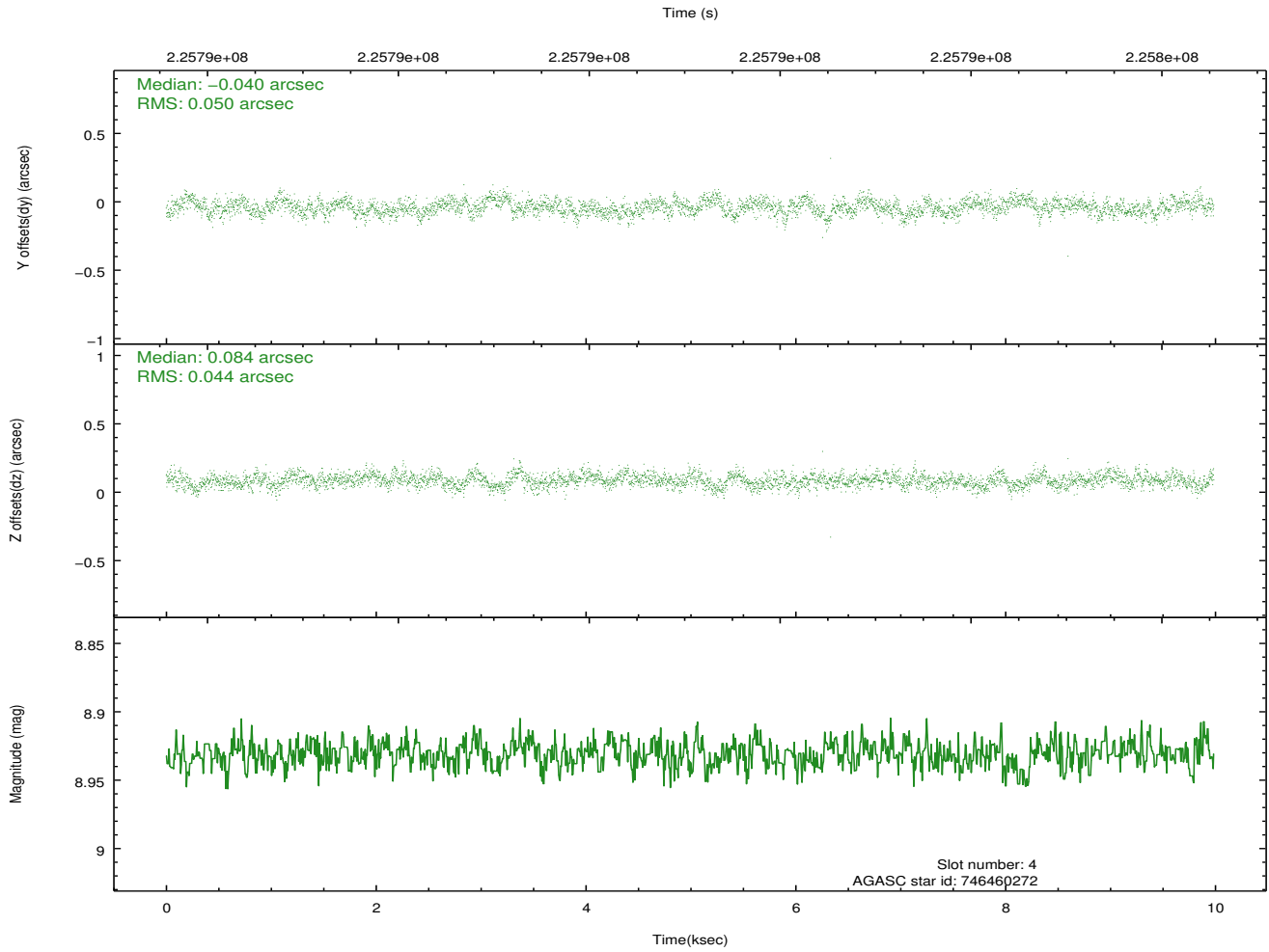
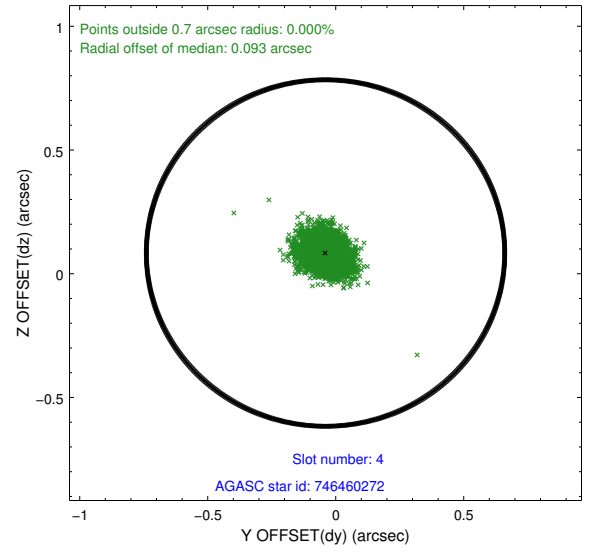
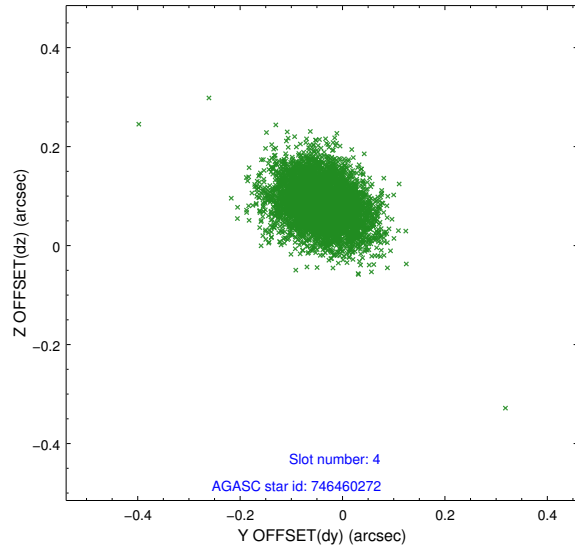
slot	status	id	mag	n_pts	med_dy	med_dz	dr1	dr2	ra	dec	mean_y	mean_z
0	FID	ACIS-I-1	7.24	2436	0.009	-0.031	0.016	0.030	0.000000	0.000000	934.76	-834.09
1	FID	ACIS-I-4	7.16	2436	0.070	0.040	0.012	0.020	0.000000	0.000000	2155.17	1065.52
2	FID	ACIS-I-5	7.22	2436	-0.178	0.061	0.009	0.015	0.000000	0.000000	-1812.74	1064.00
3	GUIDE	746455152	7.82	4871	-0.250	-0.265	0.052	0.085	278.447893	-9.976732	2059.57	150.28
4	GUIDE	746460272	8.93	4871	-0.040	0.084	0.069	0.112	278.847488	-10.152127	1529.01	-1306.34
5	GUIDE	746460328	9.83	4869	-0.044	0.045	0.126	0.204	278.603974	-9.898096	2380.84	-381.94
6	GUIDE	746462392	8.53	4871	0.194	0.172	0.087	0.145	279.038421	-10.890715	-1077.92	-2164.02
7	GUIDE	746462456	8.39	4870	0.137	-0.024	0.058	0.093	278.652171	-10.530173	122.18	-711.43

2.4 Star Slots

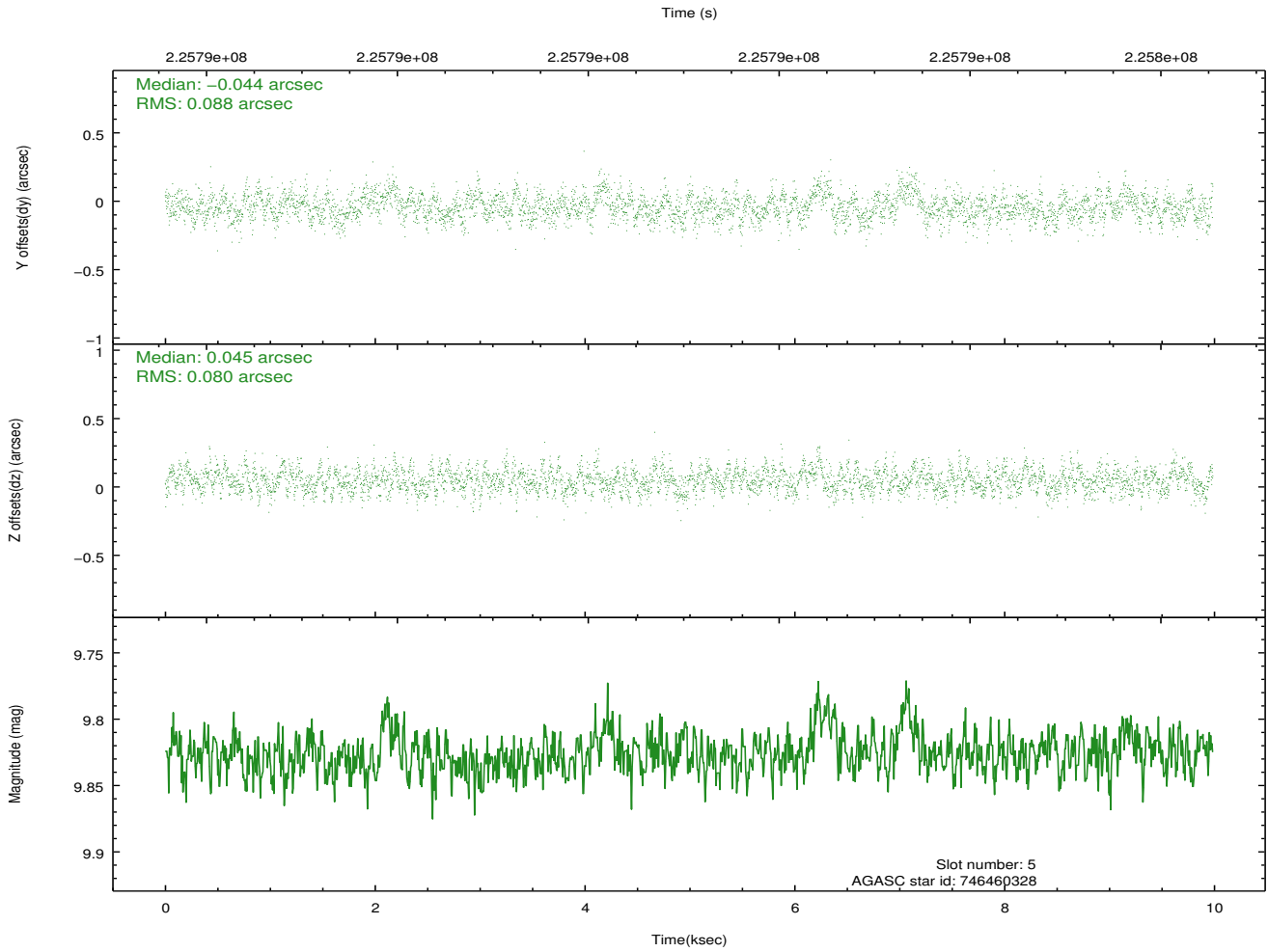
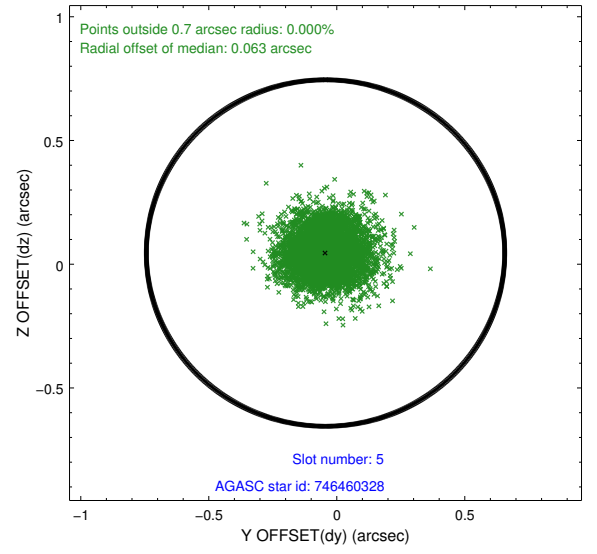
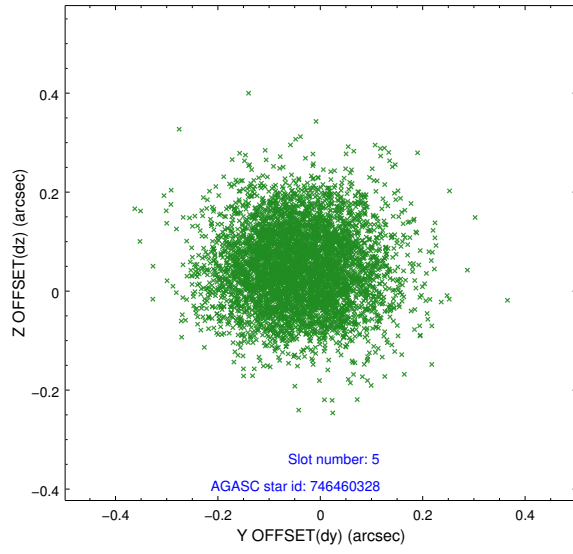
2.4.1 Slot 3



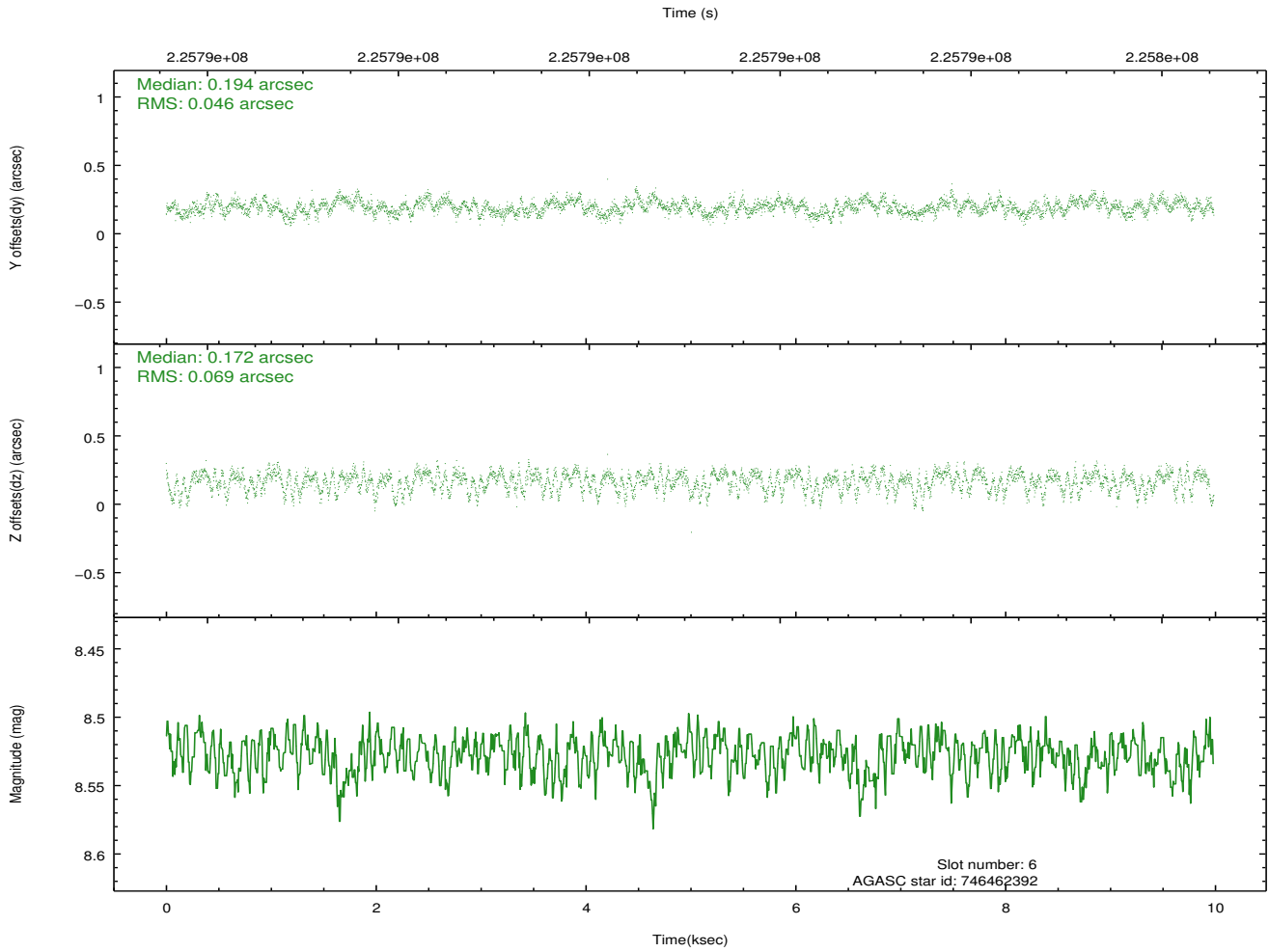
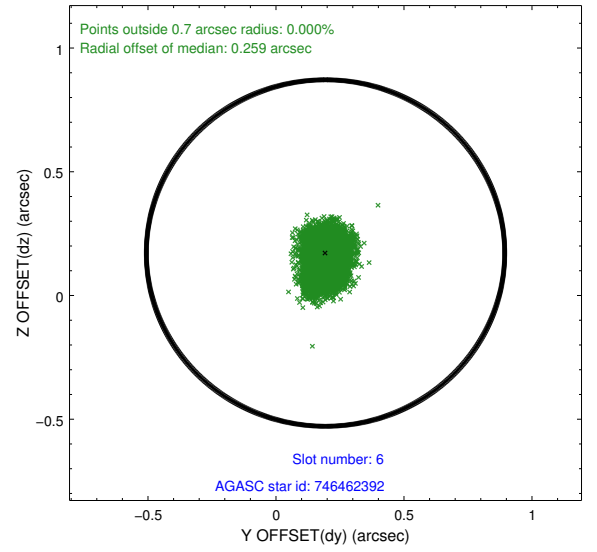
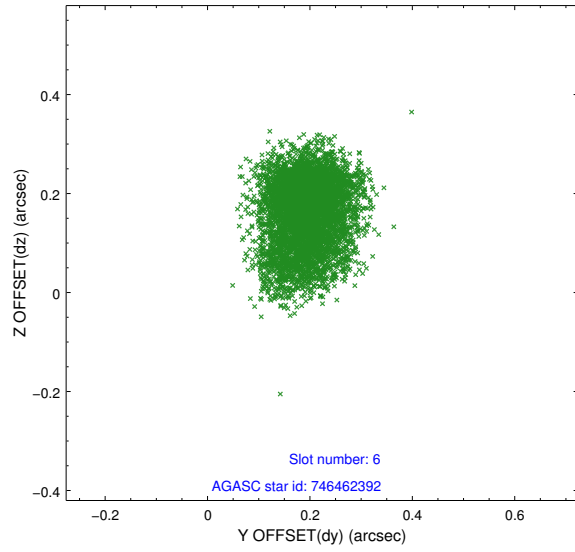
2.4.2 Slot 4



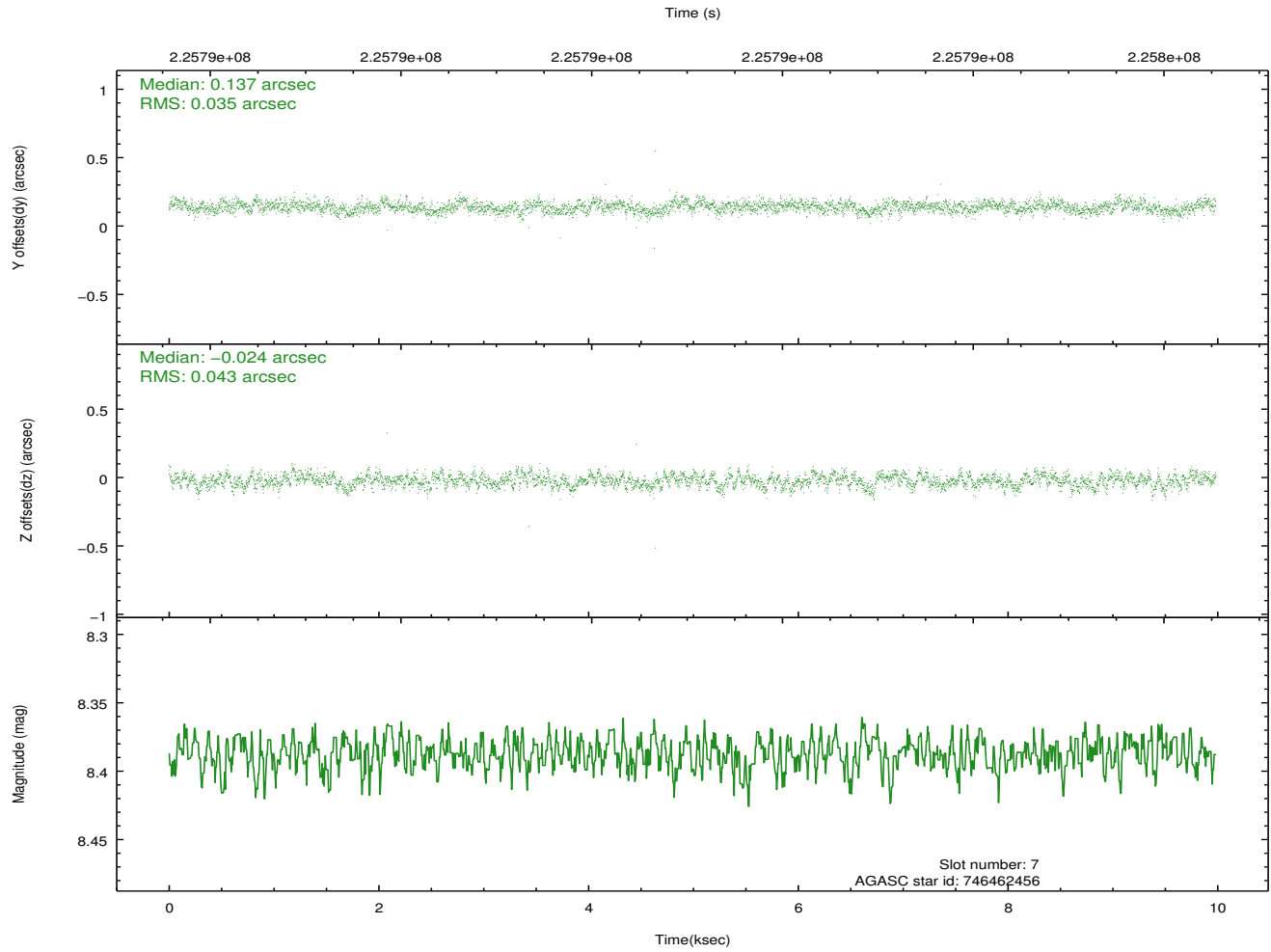
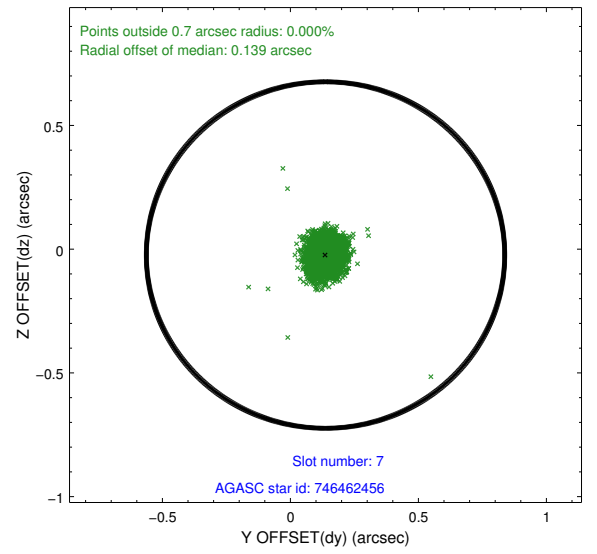
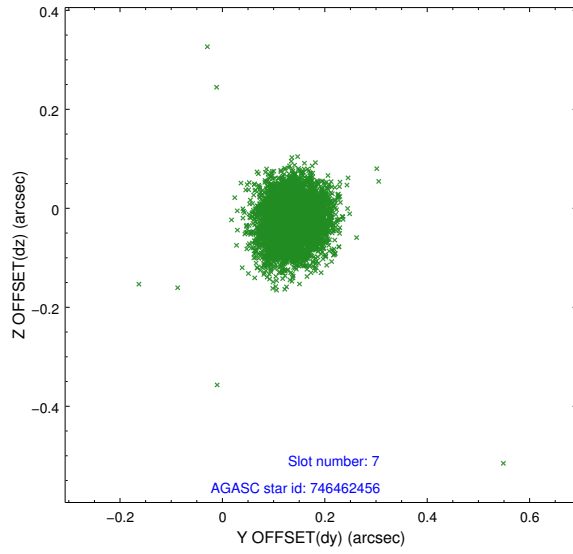
2.4.3 Slot 5



2.4.4 Slot 6

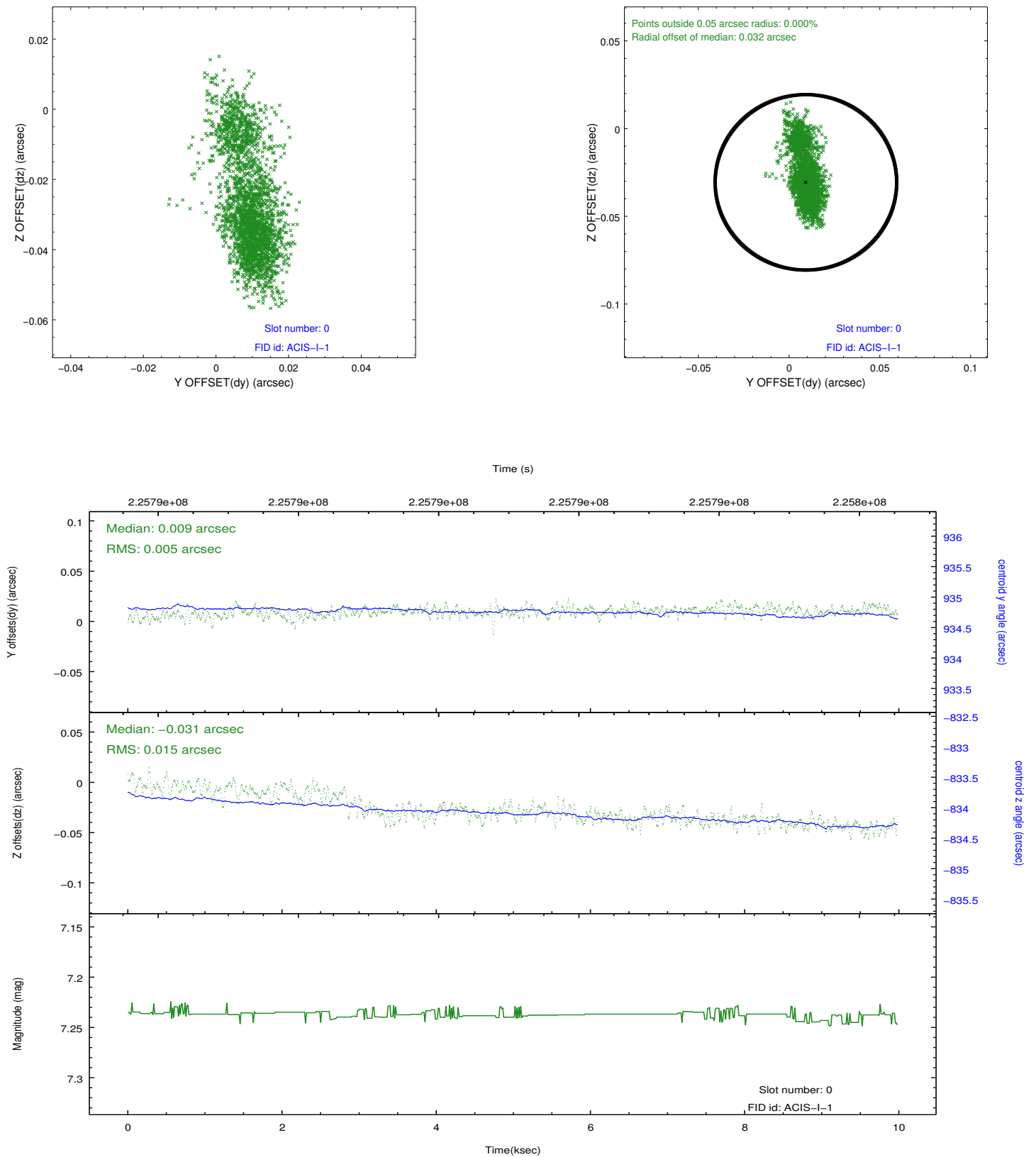


2.4.5 Slot 7

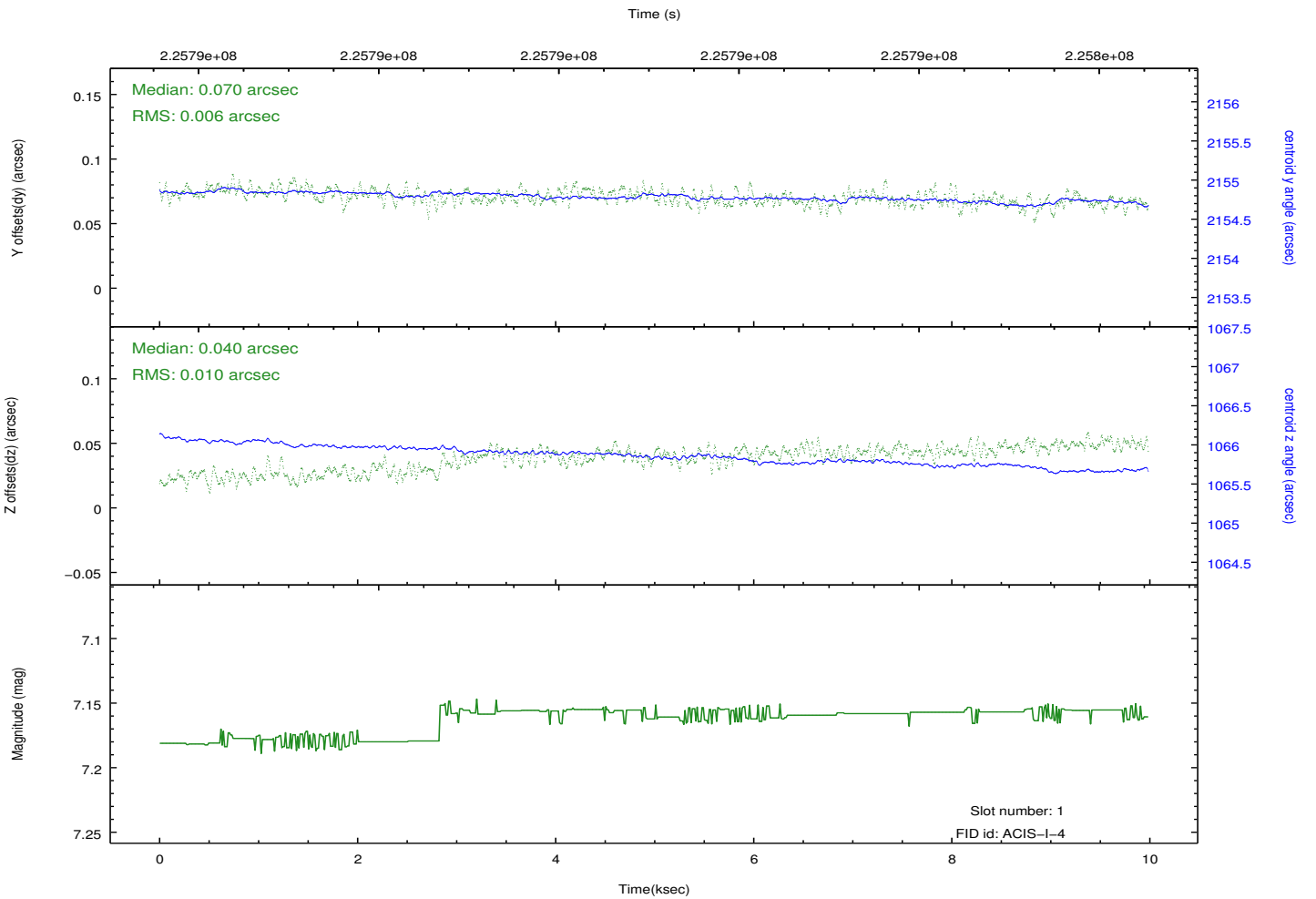
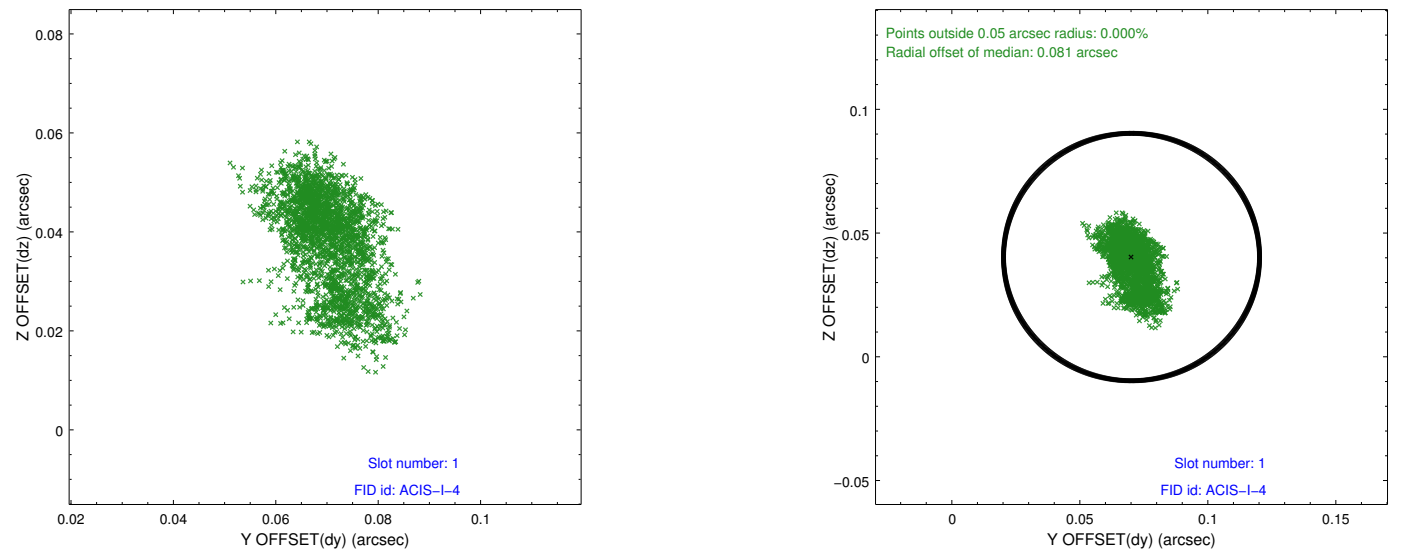


2.5 FID Slots

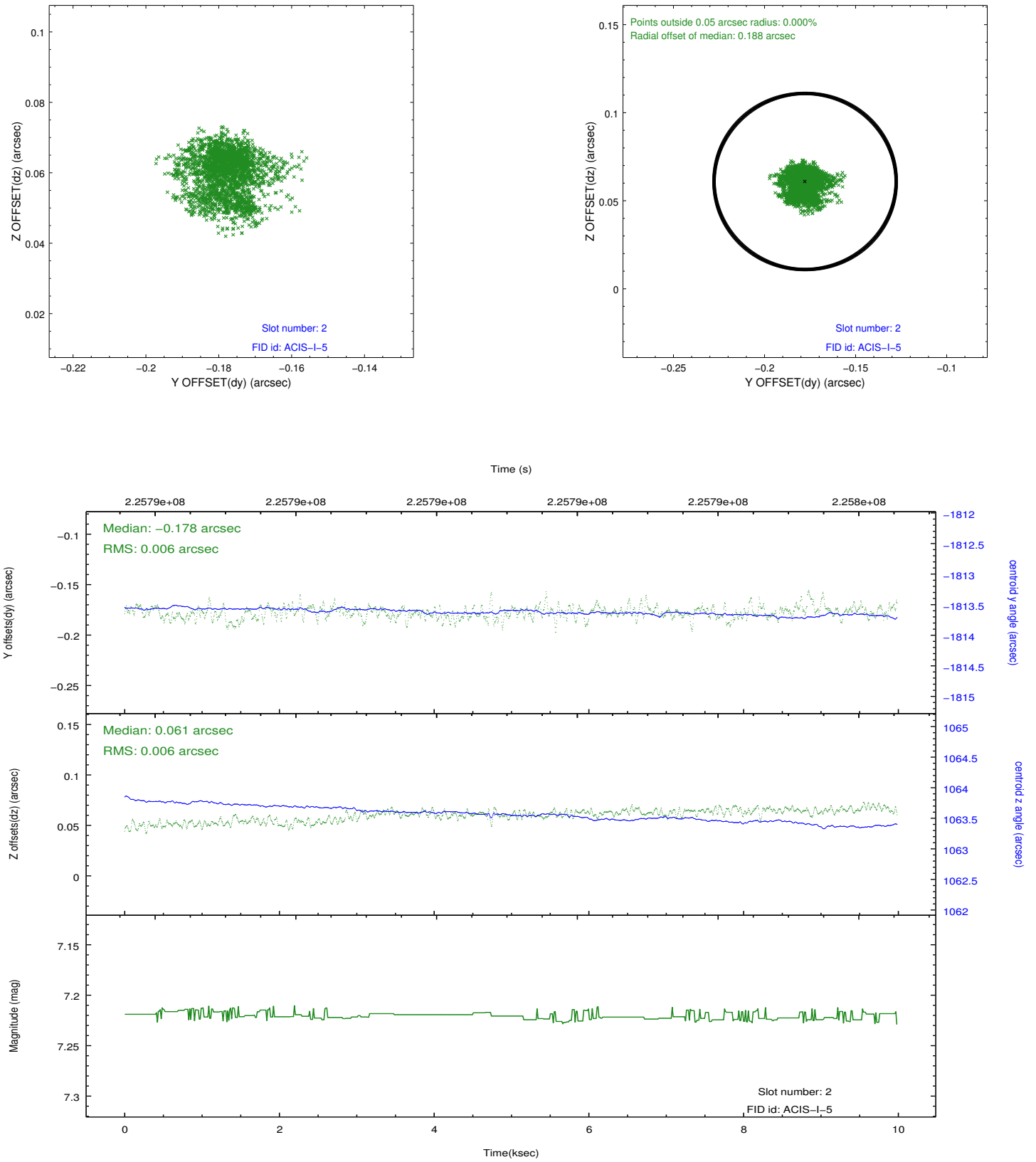
2.5.1 Slot 0



2.5.2 Slot 1



2.5.3 Slot 2



A Summary

A.1 Status

V&V Scientist	Jen Lauer
V&V Date (YYYY-MM-DD)	2013.01.10
V&V Edition	1
V&V Disposition and Status	OK
V&V Charge Time	9.555199

A.2 Comments

Window constraint met.