

V&V Reference Report

L2 ASCDS Version : 8.4.5

Observation 60510 - L2 Version 3
Chandra X-Ray Center

L2 Processing Date : Nov 5 2012

Contents

1	Front	2
2	OBI	3
2.1	OBI	3
2.1.1	Images	3
2.1.2	Bias	3
2.1.3	Parameters	4
2.1.4	Events	4
2.2	Compared Parameters	5
2.3	Star Slots	6
2.4	FID Slots	6
A	Summary	7
A.1	Status	7
A.2	Comments	7

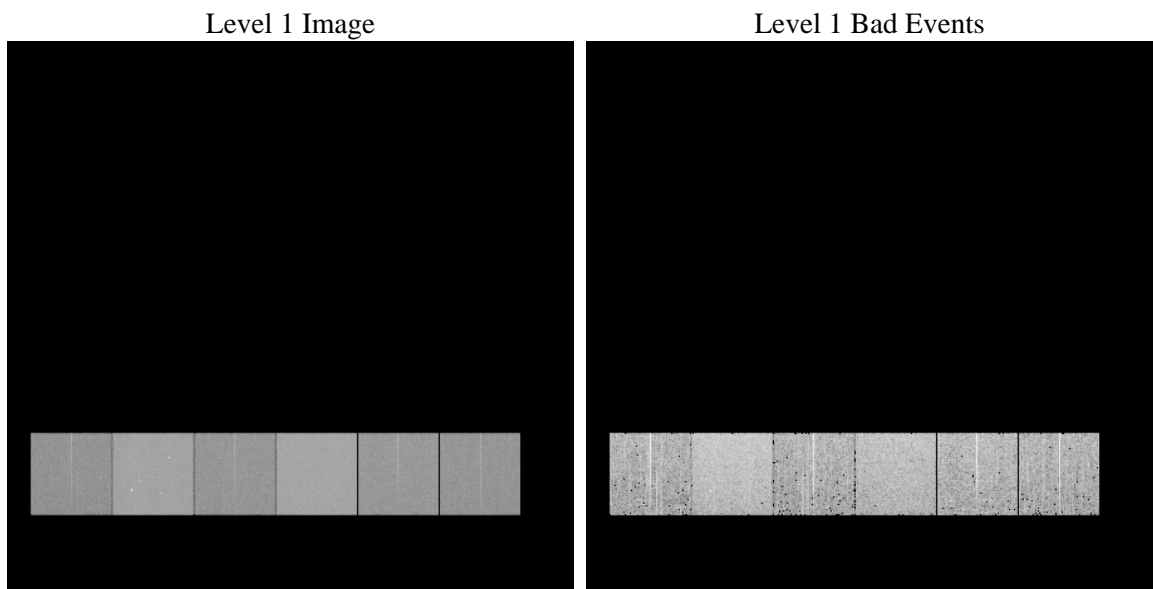
1 Front

seq_num	 	Sequence number
obs_id	60510	Observation id
title	ACIS-456789 diagnostics	Proposal title
observer	CHANDRA engineering request/realtime commanding	Principal investig
object	 	Source name
dtcycle	0	
cycle	P	events from which exps? Prim/Second/Both
ra_targ	0.0	Observer's specified target RA [deg]
dec_targ	0.0	Observer's specified target Dec [deg]
ra_nom	258.12063303099	Nominal RA [deg]
dec_nom	5.9800546770225	Nominal Dec [deg]
roll_nom	282.9650378914	Nominal Roll [deg]
revision	3	Processing version of data
ontime	7798.3999709487	Sum of GTIs [s]
livetime	7699.6519348838	Livetime [s]
ontime4	4114.9584922791	Sum of GTIs [s]
ontime5	7798.3999709487	Sum of GTIs [s]
ontime6	4383.9199968278	Sum of GTIs [s]
ontime7	7798.3999709487	Sum of GTIs [s]
ontime8	4661.1442195773	Sum of GTIs [s]
ontime9	4375.9380215704	Sum of GTIs [s]
l2events	1136661	Number of level 2 events

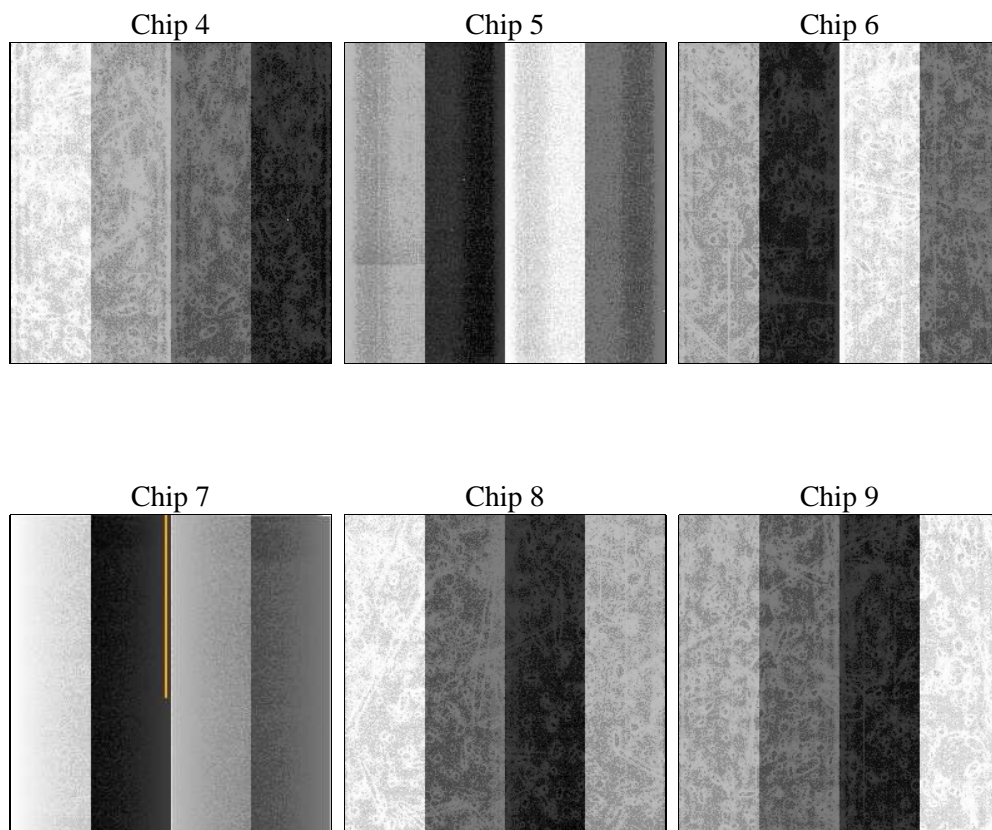
2 OBI

2.1 OBI

2.1.1 Images



2.1.2 Bias



2.1.3 Parameters

obi_num	0	Obi number	sched_exp_time	0.0	[s] Scheduled observation exposure time
ascdsver	8.4.5	Processing system revision	ontime	7798.3999709487	Sum of GTIs [s]
caldbver	4.5.2	 	ontime4	4114.9584922791	Sum of GTIs [s]
date	2012-11-05T19:55:40	Date and time of file creation	ontime5	7798.3999709487	Sum of GTIs [s]
revision	3	Processing version of data	ontime6	4383.9199968278	Sum of GTIs [s]
			ontime7	7798.3999709487	Sum of GTIs [s]
			ontime8	4661.1442195773	Sum of GTIs [s]
			ontime9	4375.9380215704	Sum of GTIs [s]
			l1events	1418093	Number of level 1 events

2.1.4 Events

	ccd 4	ccd 5	ccd 6	ccd 7	ccd 8	ccd 9		ccd 4	ccd 5	ccd 6	ccd 7	ccd 8	ccd 9
level 1 events	173594	314865	193957	337040	211048	187589	grade 0 events	82700	63858	89001	73628	96541	86321
rejected events	31191	49793	30790	41625	35394	31098		47%	20%	45%	21%	45%	46%
rejected %	17%	15%	15%	12%	16%	16%	grade 1 events	573	295	409	192	435	482
								0%	0%	0%	0%	0%	0%
							grade 2 events	22991	93624	28206	65198	30615	27224
								13%	29%	14%	19%	14%	14%
							grade 3 events	9473	16671	10069	29864	11408	9962
								5%	5%	5%	8%	5%	5%
							grade 4 events	9319	16847	10223	29421	11249	9960
								5%	5%	5%	8%	5%	5%
							grade 5 events	1854	8590	2124	7864	2561	2198
								1%	2%	1%	2%	1%	1%
							grade 6 events	17920	74072	25668	97304	25841	23024
								10%	23%	13%	28%	12%	12%
							grade 7 events	28764	40908	28257	33569	32398	28418
								16%	12%	14%	9%	15%	15%

2.2 Compared Parameters

Parameter	Planned	Actual	Parameter	Planned	Actual
Instrument	ACIS	ACIS	Obspar format version number	7	7
Detector	ACIS-456789	ACIS-456789	Obspar file type	PREDICTED	ACTUAL
Grating	NONE	NONE	Obspar update status	NONE	UPDATED
Data mode	FAINT	FAINT	On-chip summing requested	N	N
Observation mode	SECONDARY	SECONDARY	Subarray requested	NONE	NONE
[deg] Pointing RA	0	258.1206330309916	Alternating exposures requested	N	N
[deg] Pointing Dec	0	5.980054677022517	[s] Primary exposure time	0.000000	3.2
[deg] Pointing Roll	0.0	282.9650378913983			
[mm] SIM focus pos	-0.684267	-0.6828225247311905			
[mm] SIM defocus	0	0.8505141146731063			
[mm] SIM translation stage pos	-190.132523	250.466033080201			
[mm] SIM translation stage offset	0	-0.01005468664627074			
[s] Observation start time (MET)	182533408.542062	182533407.51734			
Observation start date	2003-10-14T15:43:29	2003-10-14T15:43:27			
[s] Observation end time (MET)	182569636.143622	182569635.1189			
Observation end date	2003-10-15T01:47:16	2003-10-15T01:47:15			
Read mode	TIMED	TIMED			

2.3 Star Slots

2.4 FID Slots

A Summary

A.1 Status

V&V Scientist	Beth Sundheim
V&V Date (YYYY-MM-DD)	2012.12.07
V&V Edition	1
V&V Disposition and Status	OK
V&V Charge Time	7.7983999709487

A.2 Comments