

V&V Reference Report

L2 ASCDS Version : 7.6.8

Observation 60510 - L2 Version 001
Chandra X-Ray Center

L2 Processing Date : Jul 2 2006

Contents

1	Front	2
2	OBI	3
2.1	OBI	3
2.1.1	Images	3
2.1.2	Bias	3
2.1.3	Parameters	4
2.1.4	Events	4
2.2	Compared Parameters	5
2.3	Aspect	6
2.4	Star Slots	8
2.5	FID Slots	8
A	Summary	9
A.1	Status	9
A.2	Comments	9

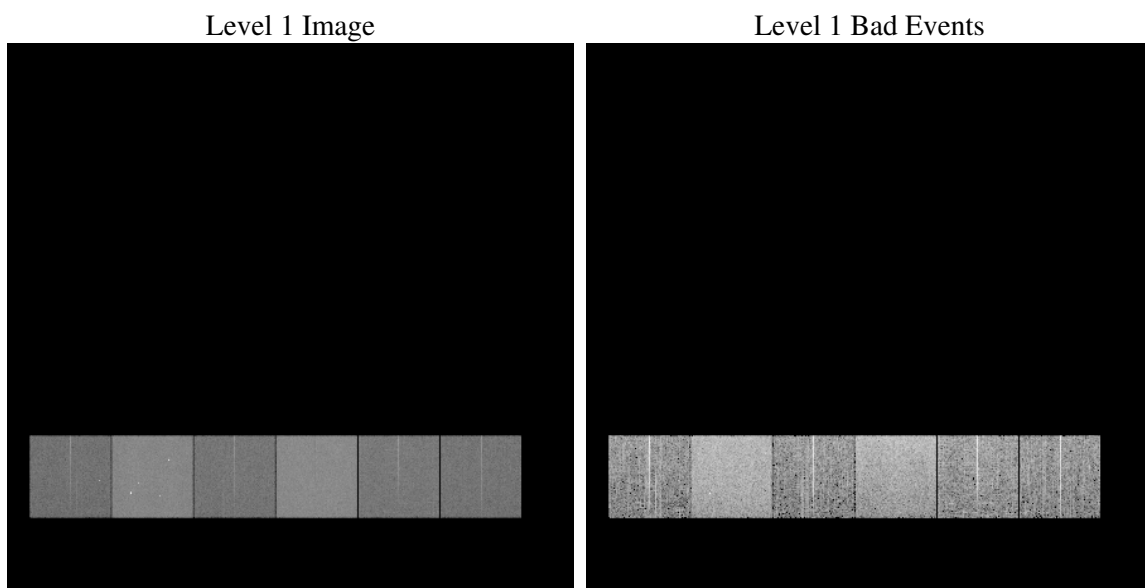
1 Front

seq_num	
obs_id	60510
title	ACIS-456789 diagnostics
observer	CHANDRA engineering request/realtime commanding
object	
dtcycle	0
cycle	P
ra_targ	0.0
dec_targ	0.0
ra_nom	258.12062679857
dec_nom	5.98008175409
roll_nom	282.96503853335
revision	2
ontime	7798.2186531425
livetime	7699.4729130328
ontime4	4113.358492285
ontime5	7798.2596931458
ontime6	4382.3199968338
ontime7	7798.2186531425
ontime8	4661.1270617545
ontime9	4375.7156637609
l2events	1118941

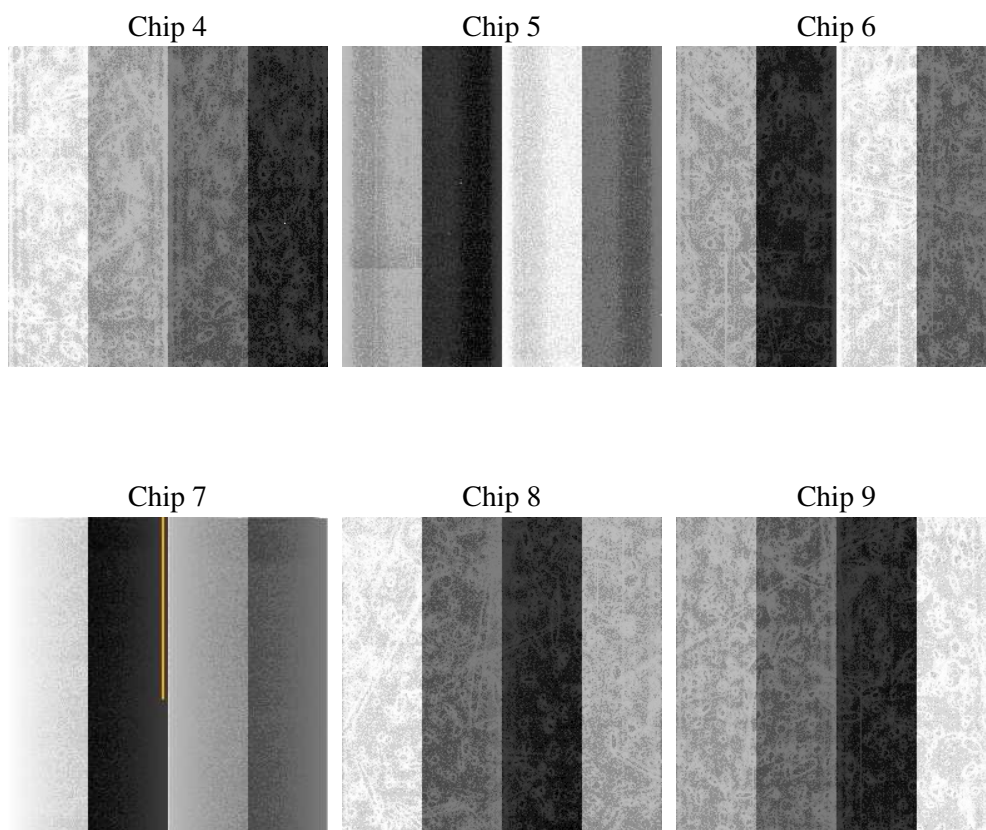
2 OBI

2.1 OBI

2.1.1 Images



2.1.2 Bias



2.1.3 Parameters

obi_num	0
ascdsver	7.6.8
caldbver	3.2.2
date	2006-07-02T03:46:50
revision	2

sched_exp_time	0.0
ontime	7801.0860753655
ontime4	4116.1027944982
ontime5	7801.0860753655
ontime6	4385.1053390503
ontime7	7801.0860753655
ontime8	4663.8303239942
ontime9	4378.6241259873
l1events	1418093

2.1.4 Events

	ccd 4	ccd 5	ccd 6	ccd 7	ccd 8	ccd 9
level 1 events	173594	314865	193957	337040	211048	187589
rejected events	31291	57292	30930	51798	35507	31213
rejected %	18%	18%	15%	15%	16%	16%

	ccd 4	ccd 5	ccd 6	ccd 7	ccd 8	ccd 9
grade 0 events	82701	33093	89003	52099	96541	86321
	47%	10%	45%	15%	45%	46%
grade 1 events	573	197	409	115	435	482
	0%	0%	0%	0%	0%	0%
grade 2 events	22990	121174	28204	85133	30615	27224
	13%	38%	14%	25%	14%	14%
grade 3 events	9473	8766	10069	21365	11408	9962
	5%	2%	5%	6%	5%	5%
grade 4 events	9319	8898	10223	20916	11249	9960
	5%	2%	5%	6%	5%	5%
grade 5 events	1854	6207	2124	6664	2561	2199
	1%	1%	1%	1%	1%	1%
grade 6 events	17920	85767	25668	105839	25841	23023
	10%	27%	13%	31%	12%	12%
grade 7 events	28764	50763	28257	44909	32398	28418
	16%	16%	14%	13%	15%	15%

2.2 Compared Parameters

Parameter	Planned	Actual	Parameter	Planned	Actual
Instrument	ACIS	ACIS	Obspar format version number	6	6
Detector	ACIS-456789	ACIS-456789	Obspar file type	PREDICTED	ACTUAL
Grating	NONE	NONE	Obspar update status	NONE	UPDATED
Data mode	FAINT	FAINT	On-chip summing requested	N	N
Observation mode	SECONDARY	SECONDARY	Subarray requested	NONE	NONE
Pointing RA	0	258.1206267985681	Alternating exposures requested	N	N
Pointing Dec	0	5.980081754089966	Primary exposure time	0.000000	3.2
Pointing Roll	0.0	282.965038533351			
SIM focus pos (mm)	-0.684267	-0.6828225247311905			
SIM defocus (mm)	0	0.8505141146731063			
SIM translation stage pos (mm)	-190.132523	250.466033080201			
SIM translation stage offset (mm)	0	-0.01005468664627074			
Observation start time	182533408.542062	182533407.51734			
Observation start date	2003-10-14T15:43:29	2003-10-14T15:43:27			
Observation end time	182569636.143622	182569635.1189			
Observation end date	2003-10-15T01:47:16	2003-10-15T01:47:15			
Read mode	TIMED	TIMED			

2.3 Aspect

2.4 Star Slots

2.5 FID Slots

A Summary

A.1 Status

V&V Scientist	Doug Morgan
V&V Date (YYYY-MM-DD)	2006.07.02
V&V Edition	1
V&V Disposition and Status	OK
V&V Charge Time	7.79821865

A.2 Comments