

# V&V Reference Report

## L2 ASCDS Version : 7.6.8

Observation 60470 - L2 Version 001  
Chandra X-Ray Center

L2 Processing Date : Jun 26 2006

## Contents

<b>1</b>	<b>Front</b>	<b>2</b>
<b>2</b>	<b>OBI</b>	<b>3</b>
2.1	OBI . . . . .	3
2.1.1	Images . . . . .	3
2.1.2	Bias . . . . .	3
2.1.3	Parameters . . . . .	4
2.1.4	Events . . . . .	4
2.2	Compared Parameters . . . . .	5
2.3	Aspect . . . . .	6
2.4	Star Slots . . . . .	8
2.5	FID Slots . . . . .	8
<b>A</b>	<b>Summary</b>	<b>9</b>
A.1	Status . . . . .	9
A.2	Comments . . . . .	9

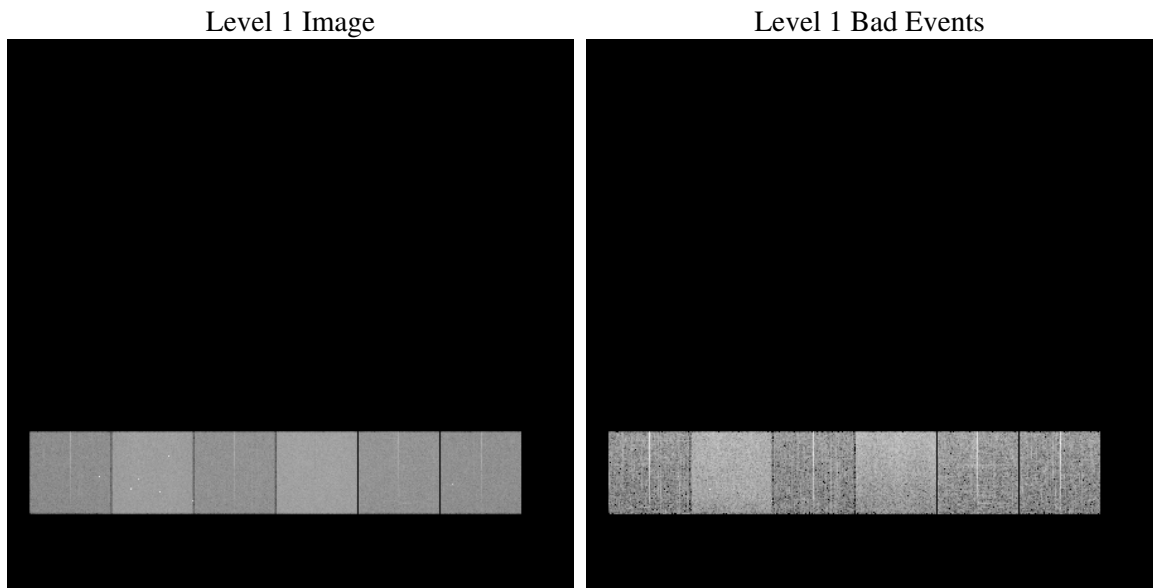
# 1 Front

seq_num	&#160
obs_id	60470
title	ACIS-456789 diagnostics
observer	CHANDRA engineering request/realtime commanding
object	&#160
dtcycle	0
cycle	P
ra_targ	0.0
dec_targ	0.0
ra_nom	29.035347283969
dec_nom	-36.000438421221
roll_nom	326.2108647844
revision	2
ontime	8374.3999688029
livetime	8268.3582739397
ontime4	4969.6007663906
ontime5	8374.3999688029
ontime6	5381.1648129225
ontime7	8374.3999688029
ontime8	5575.7052395344
ontime9	5293.534270972
l2events	1231766

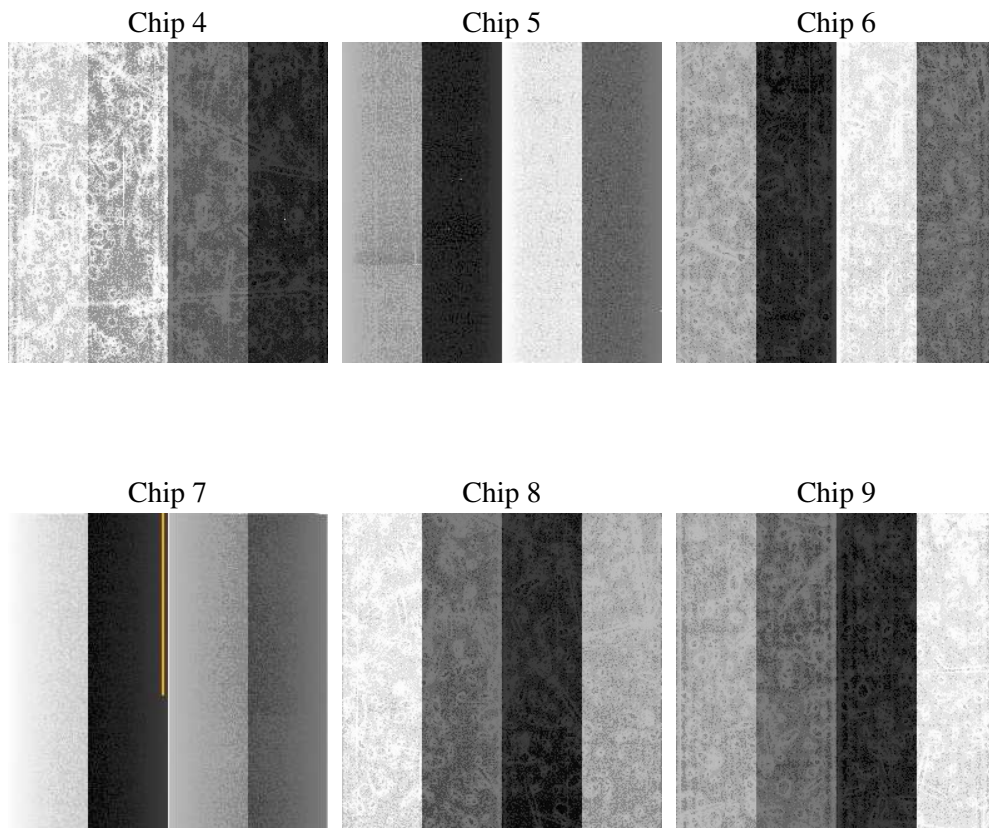
## 2 OBI

### 2.1 OBI

#### 2.1.1 Images



#### 2.1.2 Bias



### 2.1.3 Parameters

obi_num	1
ascdsver	7.6.8
caldbver	3.2.2
date	2006-06-27T02:10:37
revision	2

sched_exp_time	0.0
ontime	8465.5011468232
ontime4	5017.1038030982
ontime5	8465.5011468232
ontime6	5444.9137409627
ontime7	8465.5011468232
ontime8	5632.8901171684
ontime9	5344.4424081147
l1events	1534934

### 2.1.4 Events

	ccd 4	ccd 5	ccd 6	ccd 7	ccd 8	ccd 9
level 1 events	198011	315685	225454	341734	238623	215427
rejected events	30924	55783	30795	51534	35182	31095
rejected %	15%	17%	13%	15%	14%	14%

	ccd 4	ccd 5	ccd 6	ccd 7	ccd 8	ccd 9
grade 0 events	98149	32873	107945	52516	112624	103144
	49%	10%	47%	15%	47%	47%
grade 1 events	588	141	440	124	430	483
	0%	0%	0%	0%	0%	0%
grade 2 events	27021	124882	34053	89487	36161	32006
	13%	39%	15%	26%	15%	14%
grade 3 events	11130	8752	12205	21240	13196	11755
	5%	2%	5%	6%	5%	5%
grade 4 events	11017	8637	12210	20863	13118	11736
	5%	2%	5%	6%	5%	5%
grade 5 events	1929	5739	2084	6182	2517	2243
	0%	1%	0%	1%	1%	1%
grade 6 events	21430	87524	30603	109320	30498	27444
	10%	27%	13%	31%	12%	12%
grade 7 events	26747	47137	25914	42002	30079	26616
	13%	14%	11%	12%	12%	12%

## 2.2 Compared Parameters

Parameter	Planned	Actual	Parameter	Planned	Actual
Instrument	ACIS	ACIS	Obspar format version number	6	6
Detector	ACIS-456789	ACIS-456789	Obspar file type	PREDICTED	ACTUAL
Grating	NONE	NONE	Obspar update status	NONE	UPDATED
Data mode	FAINT	FAINT	On-chip summing requested	N	N
Observation mode	SECONDARY	SECONDARY	Subarray requested	NONE	NONE
Pointing RA	0	29.03534728396912	Alternating exposures requested	N	N
Pointing Dec	0	-36.00043842122147	Primary exposure time	0.000000	3.2
Pointing Roll	0.0	326.210864784395			
SIM focus pos (mm)	-0.684267	-0.6828225247311905			
SIM defocus (mm)	0	0.8505141146731063			
SIM translation stage pos (mm)	-190.132523	250.466033080201			
SIM translation stage offset (mm)	0	-0.01005468664627074			
Observation start time	186224405.001526	186224403.97681			
Observation start date	2003-11-26T09:00:05	2003-11-26T09:00:03			
Observation end time	186246873.0025	186246871.97779			
Observation end date	2003-11-26T15:14:33	2003-11-26T15:14:31			
Read mode	TIMED	TIMED			

## 2.3 Aspect



## **2.4 Star Slots**

## **2.5 FID Slots**



## A Summary

### A.1 Status

V&V Scientist	Jen Lauer
V&V Date (YYYY-MM-DD)	2006.06.27
V&V Edition	1
V&V Disposition and Status	OK
V&V Charge Time	8.37439996

### A.2 Comments