

V&V Reference Report

L2 ASCDS Version : 7.6.7.2

Observation 60390 - L2 Version 001
Chandra X-Ray Center

L2 Processing Date : Jun 4 2006

Contents

1	Front	2
2	OBI	3
2.1	OBI	3
2.1.1	Images	3
2.1.2	Bias	3
2.1.3	Parameters	4
2.1.4	Events	4
2.2	Compared Parameters	5
2.3	Aspect	6
2.4	Star Slots	8
2.5	FID Slots	8
A	Summary	9
A.1	Status	9
A.2	Comments	9

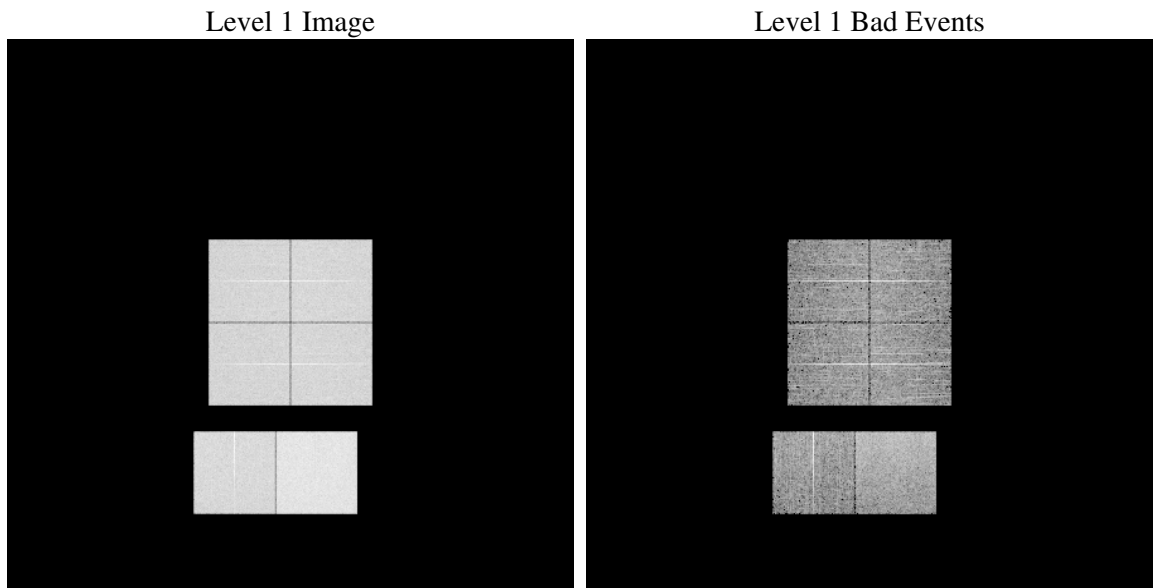
1 Front

seq_num	
obs_id	60390
title	ACIS-012367 diagnostics
observer	CHANDRA engineering request/realtime commanding
object	
dtcycle	0
cycle	P
ra_targ	0.0
dec_targ	0.0
ra_nom	266.21808541169
dec_nom	65.227561230897
roll_nom	41.755645026202
revision	2
ontime	8451.1999685168
livetime	8344.1857858138
ontime0	6033.4392354786
ontime1	6166.3185273707
ontime2	5819.5349196494
ontime3	5925.1410181224
ontime6	6311.0216385722
ontime7	8451.1999685168
l2events	1237836

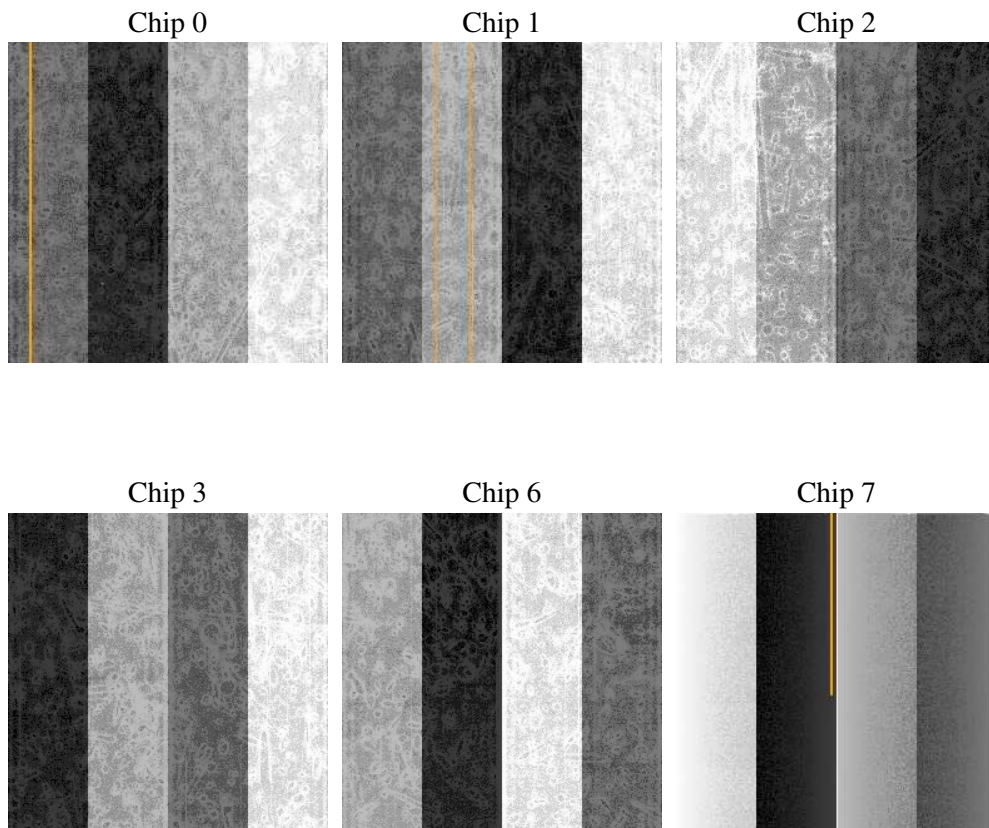
2 OBI

2.1 OBI

2.1.1 Images



2.1.2 Bias



2.1.3 Parameters

obi_num	0
ascdsver	7.6.7.2
caldbver	3.2.2
date	2006-06-04T23:47:55
revision	2

sched_exp_time	0.0
ontime	8468.734369725
ontime0	6047.7326664031
ontime1	6177.3709482253
ontime2	5830.5873405039
ontime3	5937.5390693247
ontime6	6323.2144897878
ontime7	8468.734369725
l1events	1536496

2.1.4 Events

	ccd 0	ccd 1	ccd 2	ccd 3	ccd 6	ccd 7
level 1 events	233434	240433	229423	236540	256307	340359
rejected events	35275	36729	35730	37968	38246	54503
rejected %	15%	15%	15%	16%	14%	16%

	ccd 0	ccd 1	ccd 2	ccd 3	ccd 6	ccd 7
grade 0 events	109782	112082	108950	112249	118958	50567
	47%	46%	47%	47%	46%	14%
grade 1 events	566	511	607	581	499	129
	0%	0%	0%	0%	0%	0%
grade 2 events	34534	35845	32805	33629	37442	86517
	14%	14%	14%	14%	14%	25%
grade 3 events	12779	13125	12595	13024	13617	20905
	5%	5%	5%	5%	5%	6%
grade 4 events	12643	13000	12676	12988	13746	20887
	5%	5%	5%	5%	5%	6%
grade 5 events	2454	2536	2355	2570	2774	6718
	1%	1%	1%	1%	1%	1%
grade 6 events	28953	30075	27121	27124	34741	107684
	12%	12%	11%	11%	13%	31%
grade 7 events	31723	33259	32314	34375	34530	46952
	13%	13%	14%	14%	13%	13%

2.2 Compared Parameters

Parameter	Planned	Actual	Parameter	Planned	Actual
Instrument	ACIS	ACIS	Obspar format version number	6	6
Detector	ACIS-012367	ACIS-012367	Obspar file type	PREDICTED	ACTUAL
Grating	NONE	NONE	Obspar update status	NONE	UPDATED
Data mode	FAINT	FAINT	On-chip summing requested	N	N
Observation mode	SECONDARY	SECONDARY	Subarray requested	NONE	NONE
Pointing RA	0	266.2180854116893	Alternating exposures requested	N	N
Pointing Dec	0	65.22756123089711	Primary exposure time	0.000000	3.2
Pointing Roll	0.0	41.75564502620164			
SIM focus pos (mm)	-0.782348	-0.6828225247311905			
SIM defocus (mm)	0	0.8505141146731063			
SIM translation stage pos (mm)	-233.592463	250.466033080201			
SIM translation stage offset (mm)	0	-0.01005468664627074			
Observation start time	191710274.940105	191710273.91539			
Observation start date	2004-01-28T20:51:15	2004-01-28T20:51:13			
Observation end time	191732597.39108	191732596.36637			
Observation end date	2004-01-29T03:03:17	2004-01-29T03:03:16			
Read mode	TIMED	TIMED			

2.3 Aspect

2.4 Star Slots

2.5 FID Slots

A Summary

A.1 Status

V&V Scientist	Jen Lauer
V&V Date (YYYY-MM-DD)	2006.06.05
V&V Edition	1
V&V Disposition and Status	OK
V&V Charge Time	8.45119996

A.2 Comments