

# V&V Reference Report

## L2 ASCDS Version : 7.6.7.2

Observation 60330 - L2 Version 001  
Chandra X-Ray Center

L2 Processing Date : May 29 2006

## Contents

<b>1</b>	<b>Front</b>	<b>2</b>
<b>2</b>	<b>OBI</b>	<b>3</b>
2.1	OBI . . . . .	3
2.1.1	Images . . . . .	3
2.1.2	Bias . . . . .	3
2.1.3	Parameters . . . . .	4
2.1.4	Events . . . . .	4
2.2	Compared Parameters . . . . .	5
2.3	Aspect . . . . .	6
2.4	Star Slots . . . . .	8
2.5	FID Slots . . . . .	8
<b>A</b>	<b>Summary</b>	<b>9</b>
A.1	Status . . . . .	9
A.2	Comments . . . . .	9

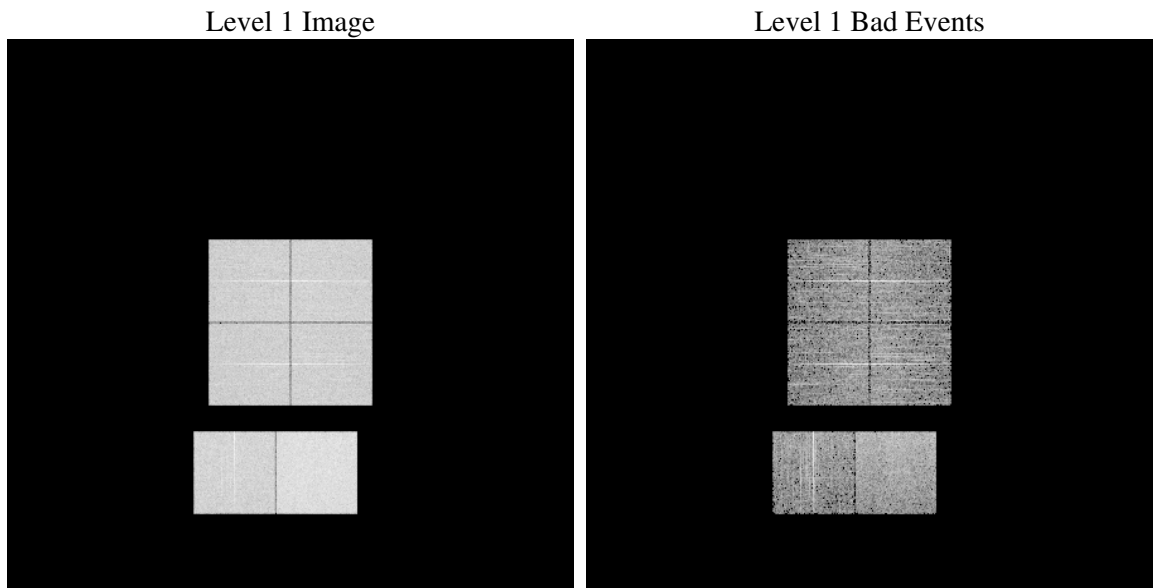
# 1 Front

seq_num	&#160
obs_id	60330
title	ACIS-012367 diagnostics
observer	CHANDRA engineering request/realtime commanding
object	&#160
dtcycle	0
cycle	P
ra_targ	0.0
dec_targ	0.0
ra_nom	169.03040028565
dec_nom	-19.999587229013
roll_nom	327.91293500946
revision	2
ontime	5123.5441810191
livetime	5058.6667795711
ontime0	3736.4519218206
ontime1	3827.2400293946
ontime2	3551.7983978391
ontime3	3584.0443385541
ontime6	3933.724996686
ontime7	5123.5441810191
l2events	741424

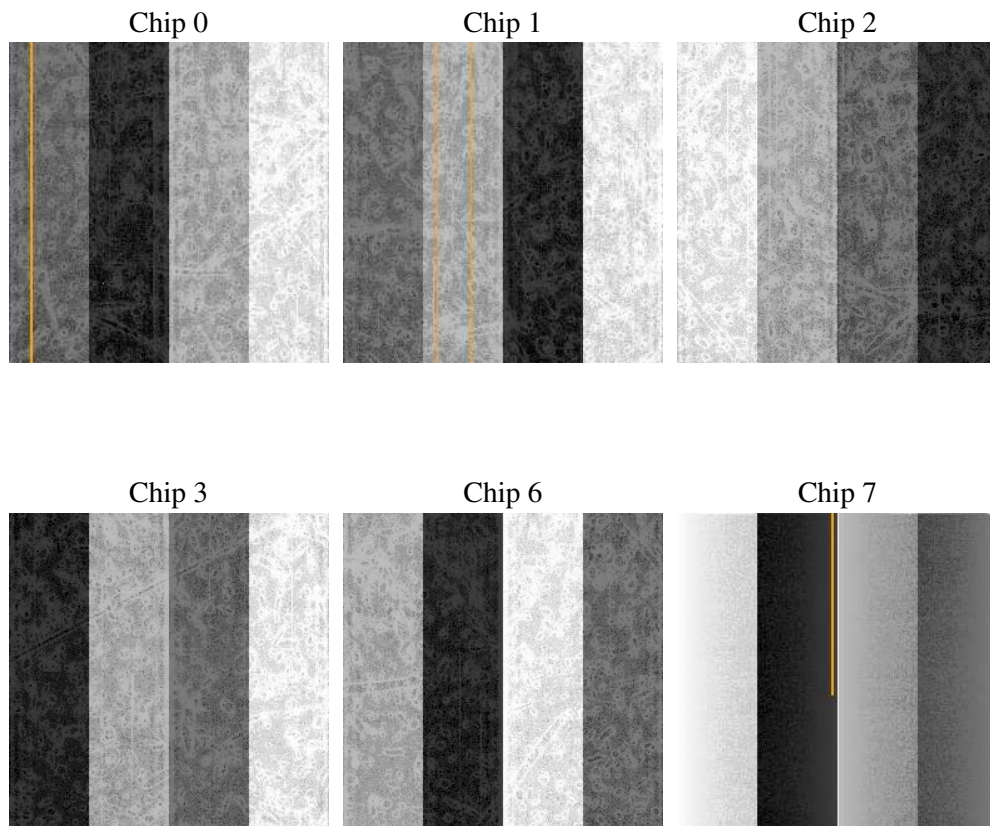
## 2 OBI

### 2.1 OBI

#### 2.1.1 Images



#### 2.1.2 Bias



### 2.1.3 Parameters

obi_num	0
ascdsver	7.6.7.2
caldsver	3.2.2
date	2006-05-29T21:51:57
revision	2

sched_exp_time	0.0
ontime	5124.0224549472
ontime0	3736.8891557455
ontime1	3827.6362233162
ontime2	3552.1535517573
ontime3	3584.5636524856
ontime6	3934.588490814
ontime7	5124.0224549472
l1events	939822

### 2.1.4 Events

	ccd 0	ccd 1	ccd 2	ccd 3	ccd 6	ccd 7
level 1 events	144011	148057	139324	142959	159548	205923
rejected events	24597	25145	23893	26341	26416	35724
rejected %	17%	16%	17%	18%	16%	17%

	ccd 0	ccd 1	ccd 2	ccd 3	ccd 6	ccd 7
grade 0 events	65664	67364	64734	65557	72008	29762
	45%	45%	46%	45%	45%	14%
grade 1 events	322	307	412	394	373	81
	0%	0%	0%	0%	0%	0%
grade 2 events	20897	21836	19477	19753	23004	51369
	14%	14%	13%	13%	14%	24%
grade 3 events	7807	7877	7513	7634	8416	12301
	5%	5%	5%	5%	5%	5%
grade 4 events	7633	7791	7494	7599	8228	12152
	5%	5%	5%	5%	5%	5%
grade 5 events	1683	1690	1466	1714	1780	4349
	1%	1%	1%	1%	1%	2%
grade 6 events	17413	18044	16213	16075	21476	64615
	12%	12%	11%	11%	13%	31%
grade 7 events	22592	23148	22015	24233	24263	31294
	15%	15%	15%	16%	15%	15%

## 2.2 Compared Parameters

Parameter	Planned	Actual	Parameter	Planned	Actual
Instrument	ACIS	ACIS	Obspar format version number	6	6
Detector	ACIS-012367	ACIS-012367	Obspar file type	PREDICTED	ACTUAL
Grating	NONE	NONE	Obspar update status	NONE	UPDATED
Data mode	FAINT	FAINT	On-chip summing requested	N	N
Observation mode	SECONDARY	SECONDARY	Subarray requested	NONE	NONE
Pointing RA	0	169.0304002856535	Alternating exposures requested	N	N
Pointing Dec	0	-19.9995872290131	Primary exposure time	0.000000	3.2
Pointing Roll	0.0	327.912935009458			
SIM focus pos (mm)	-0.782348	-0.6828225247311905			
SIM defocus (mm)	0	0.8505141146731063			
SIM translation stage pos (mm)	-233.592463	250.466033080201			
SIM translation stage offset (mm)	0	-0.01005468664627074			
Observation start time	196241293.788797	196241292.7638			
Observation start date	2004-03-21T07:28:14	2004-03-21T07:28:12			
Observation end time	196256238.289453	196256237.26446			
Observation end date	2004-03-21T11:37:18	2004-03-21T11:37:17			
Read mode	TIMED	TIMED			

## 2.3 Aspect



## **2.4 Star Slots**

## **2.5 FID Slots**



## A Summary

### A.1 Status

V&V Scientist	Jen Lauer
V&V Date (YYYY-MM-DD)	2006.05.30
V&V Edition	1
V&V Disposition and Status	OK
V&V Charge Time	5.12354418

### A.2 Comments