

# V&V Reference Report

## L2 ASCDS Version : 7.6.7.2

Observation 60170 - L2 Version 001  
Chandra X-Ray Center

L2 Processing Date : May 23 2006

## Contents

<b>1</b>	<b>Front</b>	<b>2</b>
<b>2</b>	<b>OBI</b>	<b>3</b>
2.1	OBI . . . . .	3
2.1.1	Images . . . . .	3
2.1.2	Bias . . . . .	3
2.1.3	Parameters . . . . .	4
2.1.4	Events . . . . .	4
2.2	Compared Parameters . . . . .	5
2.3	Aspect . . . . .	6
2.4	Star Slots . . . . .	8
2.5	FID Slots . . . . .	8
<b>A</b>	<b>Summary</b>	<b>9</b>
A.1	Status . . . . .	9
A.2	Comments . . . . .	9

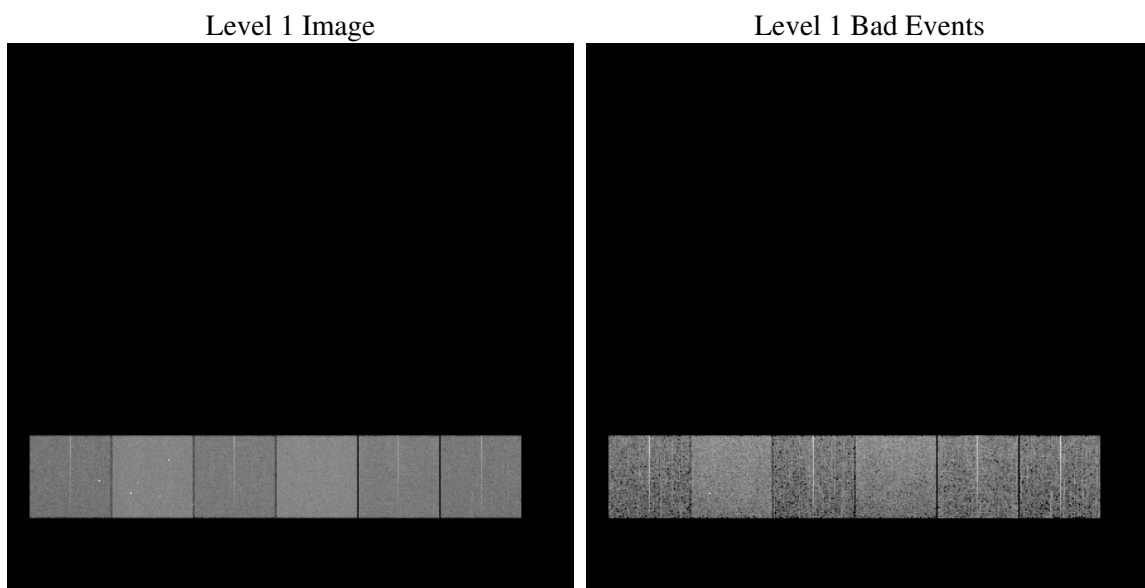
# 1 Front

seq_num	&#160
obs_id	60170
title	ACIS-456789 diagnostics
observer	CHANDRA engineering request/realtime commanding
object	&#160
dtcycle	0
cycle	P
ra_targ	0.0
dec_targ	0.0
ra_nom	321.97499945211
dec_nom	-1.9860282270786
roll_nom	117.90325282761
revision	2
ontime	5829.0627871752
livetime	5755.2516843237
ontime4	3767.9224746227
ontime5	5829.1038271785
ontime6	4163.2821220458
ontime7	5829.0627871752
ontime8	4221.7018687129
ontime9	3984.9045202136
l2events	802879

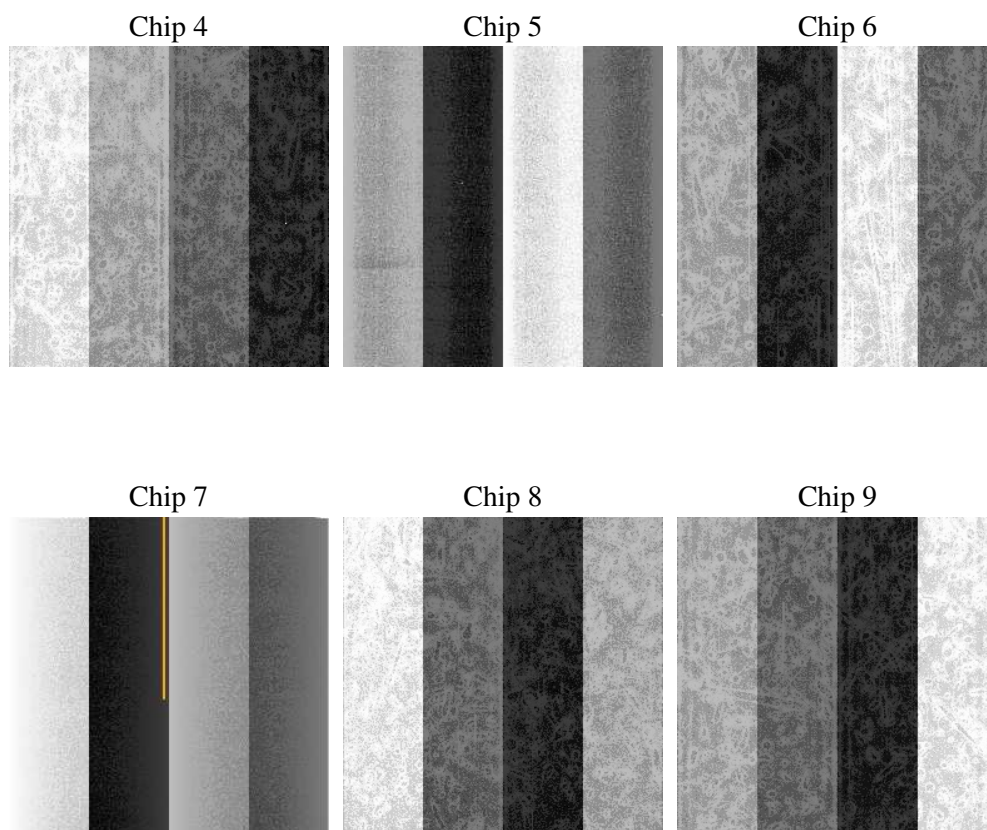
## 2 OBI

### 2.1 OBI

#### 2.1.1 Images



#### 2.1.2 Bias



### 2.1.3 Parameters

obi_num	0
ascdsver	7.6.7.2
caldbver	3.2.2
date	2006-05-24T02:17:47
revision	2

sched_exp_time	0.0
ontime	5830.5723480582
ontime4	3769.3089154959
ontime5	5830.5723480582
ontime6	4164.7096029222
ontime7	5830.5723480582
ontime8	4223.0472696126
ontime9	3986.4551210999
l1events	1062939

### 2.1.4 Events

	ccd 4	ccd 5	ccd 6	ccd 7	ccd 8	ccd 9
level 1 events	139881	213722	161463	227637	169979	150257
rejected events	29113	44816	31265	41834	34655	30752
rejected %	20%	20%	19%	18%	20%	20%

	ccd 4	ccd 5	ccd 6	ccd 7	ccd 8	ccd 9
grade 0 events	64473	21750	70630	33412	73791	65939
	46%	10%	43%	14%	43%	43%
grade 1 events	464	368	387	87	384	417
	0%	0%	0%	0%	0%	0%
grade 2 events	17487	78031	22511	55027	23711	20425
	12%	36%	13%	24%	13%	13%
grade 3 events	7327	5692	8211	13764	8713	7805
	5%	2%	5%	6%	5%	5%
grade 4 events	7457	5569	8199	13773	8707	7612
	5%	2%	5%	6%	5%	5%
grade 5 events	1771	4586	2110	5219	2475	2162
	1%	2%	1%	2%	1%	1%
grade 6 events	14024	57864	20647	69827	20402	17724
	10%	27%	12%	30%	12%	11%
grade 7 events	26878	39862	28768	36528	31796	28173
	19%	18%	17%	16%	18%	18%

## 2.2 Compared Parameters

Parameter	Planned	Actual	Parameter	Planned	Actual
Instrument	ACIS	ACIS	Obspar format version number	6	6
Detector	ACIS-456789	ACIS-456789	Obspar file type	PREDICTED	ACTUAL
Grating	NONE	NONE	Obspar update status	NONE	UPDATED
Data mode	FAINT	FAINT	On-chip summing requested	N	N
Observation mode	SECONDARY	SECONDARY	Subarray requested	NONE	NONE
Pointing RA	0	321.974999452109	Alternating exposures requested	N	N
Pointing Dec	0	-1.986028227078623	Primary exposure time	0.000000	3.2
Pointing Roll	0.0	117.9032528276149			
SIM focus pos (mm)	-0.684267	-0.6828225247311905			
SIM defocus (mm)	0	0.8505141146731063			
SIM translation stage pos (mm)	-190.132523	250.466033080201			
SIM translation stage offset (mm)	0	-0.01005468664627074			
Observation start time	204241499.09164	204241498.06664			
Observation start date	2004-06-21T21:44:59	2004-06-21T21:44:58			
Observation end time	204266476.292746	204266475.26774			
Observation end date	2004-06-22T04:41:16	2004-06-22T04:41:15			
Read mode	TIMED	TIMED			

## 2.3 Aspect



## **2.4 Star Slots**

## **2.5 FID Slots**



## A Summary

### A.1 Status

V&V Scientist	Jen Lauer
V&V Date (YYYY-MM-DD)	2006.05.24
V&V Edition	1
V&V Disposition and Status	OK
V&V Charge Time	5.82906278

### A.2 Comments