

# V&V Reference Report

## L2 ASCDS Version : 7.6.7.1

Observation 59980 - L2 Version 001  
Chandra X-Ray Center

L2 Processing Date : Apr 13 2006

## Contents

<b>1</b>	<b>Front</b>	<b>2</b>
<b>2</b>	<b>OBI</b>	<b>3</b>
2.1	OBI . . . . .	3
2.1.1	Images . . . . .	3
2.1.2	Bias . . . . .	3
2.1.3	Parameters . . . . .	4
2.1.4	Events . . . . .	4
2.2	Compared Parameters . . . . .	5
2.3	Aspect . . . . .	6
2.4	Star Slots . . . . .	8
2.5	FID Slots . . . . .	8
<b>A</b>	<b>Summary</b>	<b>9</b>
A.1	Status . . . . .	9
A.2	Comments . . . . .	9

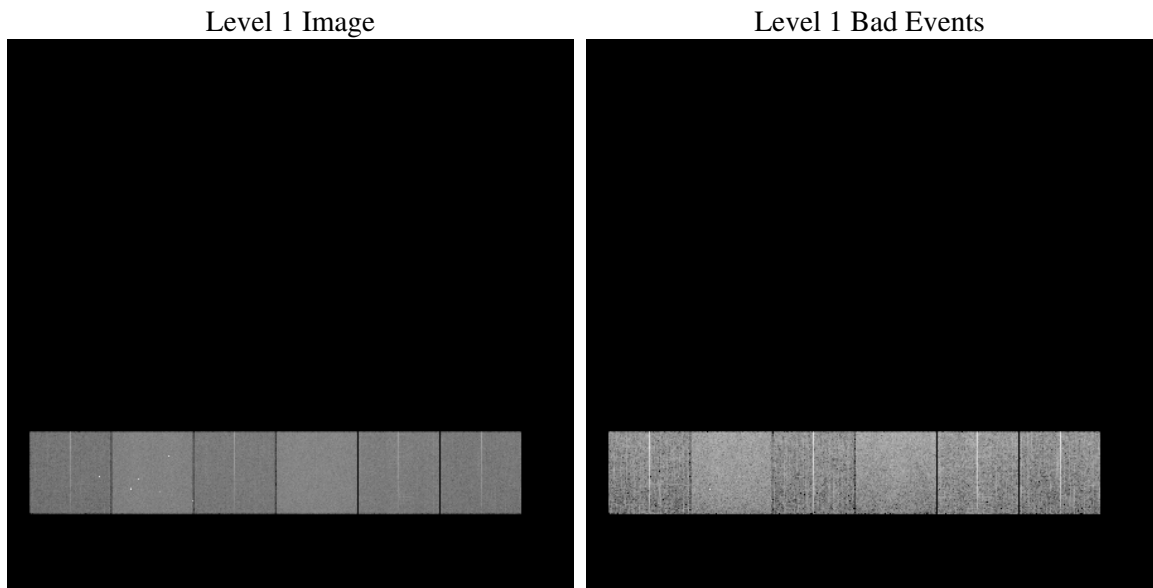
# 1 Front

seq_num	&#160
obs_id	59980
title	ACIS-456789 diagnostics
observer	CHANDRA engineering request/realtime commanding
object	&#160
dtcycle	0
cycle	P
ra_targ	0.0
dec_targ	0.0
ra_nom	48.993419783719
dec_nom	12.027860676111
roll_nom	70.118826918724
revision	2
ontime	7795.1999709606
livetime	7696.4924552224
ontime4	5348.2573194504
ontime5	7795.1999709606
ontime6	5973.7684069574
ontime7	7795.1999709606
ontime8	6213.6005610228
ontime9	5837.6462100148
l2events	1030230

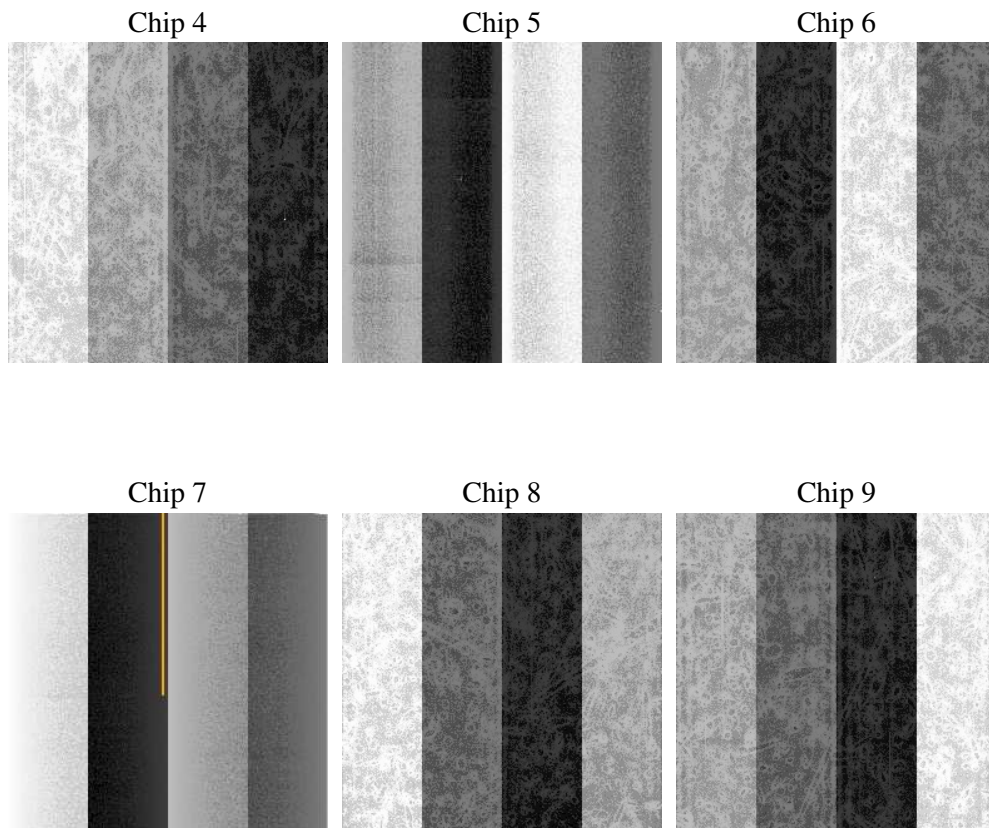
## 2 OBI

### 2.1 OBI

#### 2.1.1 Images



#### 2.1.2 Bias



### 2.1.3 Parameters

obi_num	0
ascdsver	7.6.7.1
caldsver	3.2.1
date	2006-04-13T20:09:34
revision	2

sched_exp_time	0.0
ontime	7797.8700493574
ontime4	5350.9273978472
ontime5	7797.8700493574
ontime6	5976.4384853542
ontime7	7797.8700493574
ontime8	6216.2706394196
ontime9	5840.3162884116
l1events	1411534

### 2.1.4 Events

	ccd 4	ccd 5	ccd 6	ccd 7	ccd 8	ccd 9
level 1 events	187524	274281	217367	288444	236354	207564
rejected events	45385	62925	47028	59686	53466	46949
rejected %	24%	22%	21%	20%	22%	22%

	ccd 4	ccd 5	ccd 6	ccd 7	ccd 8	ccd 9
grade 0 events	82433	26501	92146	39023	99073	88459
	43%	9%	42%	13%	41%	42%
grade 1 events	674	332	442	123	558	537
	0%	0%	0%	0%	0%	0%
grade 2 events	22634	96885	29707	68850	32198	27636
	12%	35%	13%	23%	13%	13%
grade 3 events	9518	6877	10604	16519	12105	10566
	5%	2%	4%	5%	5%	5%
grade 4 events	9392	6726	10684	16052	12195	10233
	5%	2%	4%	5%	5%	4%
grade 5 events	2566	6244	2997	7206	3700	3093
	1%	2%	1%	2%	1%	1%
grade 6 events	18242	74444	27295	88402	27446	23805
	9%	27%	12%	30%	11%	11%
grade 7 events	42065	56272	43492	52269	49079	43235
	22%	20%	20%	18%	20%	20%

## 2.2 Compared Parameters

Parameter	Planned	Actual	Parameter	Planned	Actual
Instrument	ACIS	ACIS	Obspar format version number	6	6
Detector	ACIS-456789	ACIS-456789	Obspar file type	PREDICTED	ACTUAL
Grating	NONE	NONE	Obspar update status	NONE	UPDATED
Data mode	FAINT	FAINT	On-chip summing requested	N	N
Observation mode	SECONDARY	SECONDARY	Subarray requested	NONE	NONE
Pointing RA	0	48.99341978371917	Alternating exposures requested	N	N
Pointing Dec	0	12.02786067611097	Primary exposure time	3.2	3.2
Pointing Roll	0.0	70.11882691872371			
SIM focus pos (mm)	-0.684267	-0.6828225247311905			
SIM defocus (mm)	0	0.8505141146731063			
SIM translation stage pos (mm)	-190.132523	250.466033080201			
SIM translation stage offset (mm)	0	-0.01005468664627074			
Observation start time	215885454.510494	215885453.48548			
Observation start date	2004-11-03T16:10:55	2004-11-03T16:10:53			
Observation end time	215925944.062312	215925943.03729			
Observation end date	2004-11-04T03:25:44	2004-11-04T03:25:43			
Read mode	TIMED	TIMED			

## 2.3 Aspect



## **2.4 Star Slots**

## **2.5 FID Slots**



## A Summary

### A.1 Status

V&V Scientist	Jen Lauer
V&V Date (YYYY-MM-DD)	2006.04.14
V&V Edition	1
V&V Disposition and Status	OK
V&V Charge Time	7.79519997

### A.2 Comments