

V & V Reference Report

Draft 0.988

ASCDS Version : 7.5.2

Observation 59760 - L2 Version 001
Chandra X-Ray Center

March 11, 2005

Contents

1	Front	2
2	OBI	3
2.1	OBI	3
2.1.1	Images	3
2.1.2	Bias	3
2.1.3	Parameters	4
2.1.4	Events	4
2.2	Compared Parameters	5
2.3	Star Slots	6
2.4	FID Slots	6
A	Summary	7
A.1	Status	7
A.2	Comments	7

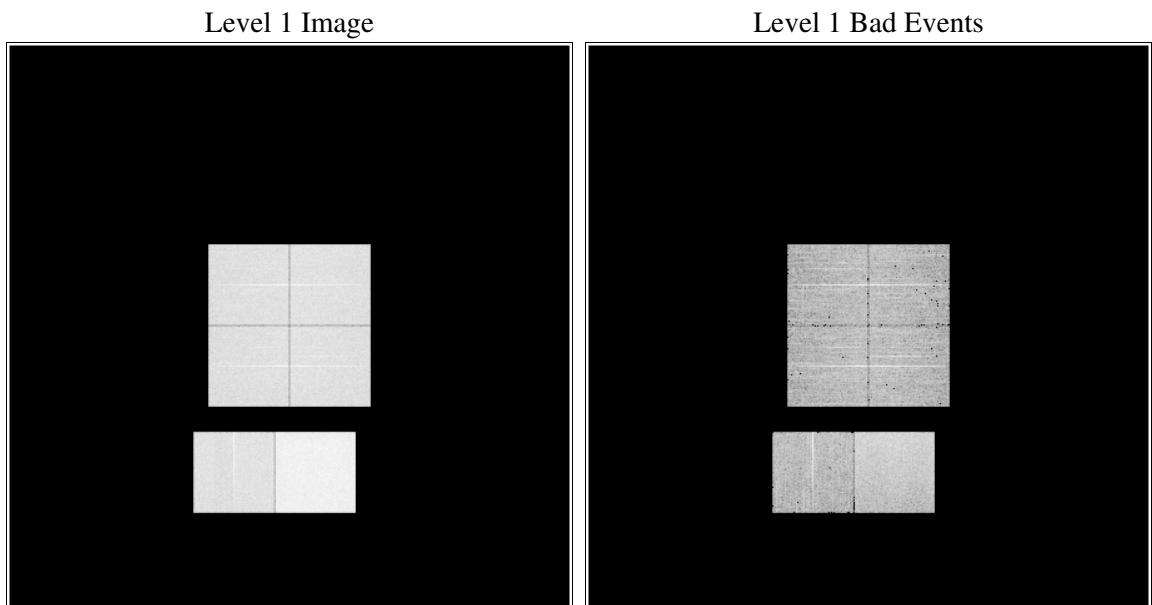
1 Front

Parameter	Value
seq_num	
obs_id	59760
title	ACIS-012367 diagnostics
observer	CHANDRA engineering request/realtime commanding
object	
dtcycle	0
cycle	P
ra_targ	0.0
dec_targ	0.0
ra_nom	160.00942800802
dec_nom	3.9757549422571
roll_nom	270.12781887041
revision	1
ontime	7233.8188740313
livetime	7142.2199037655
ontime0	4057.7070957124
ontime1	4184.1465038359
ontime2	3960.559320569
ontime3	4028.456402868
ontime6	4044.8657468557
ontime7	7233.8188740313
l2events	1035003

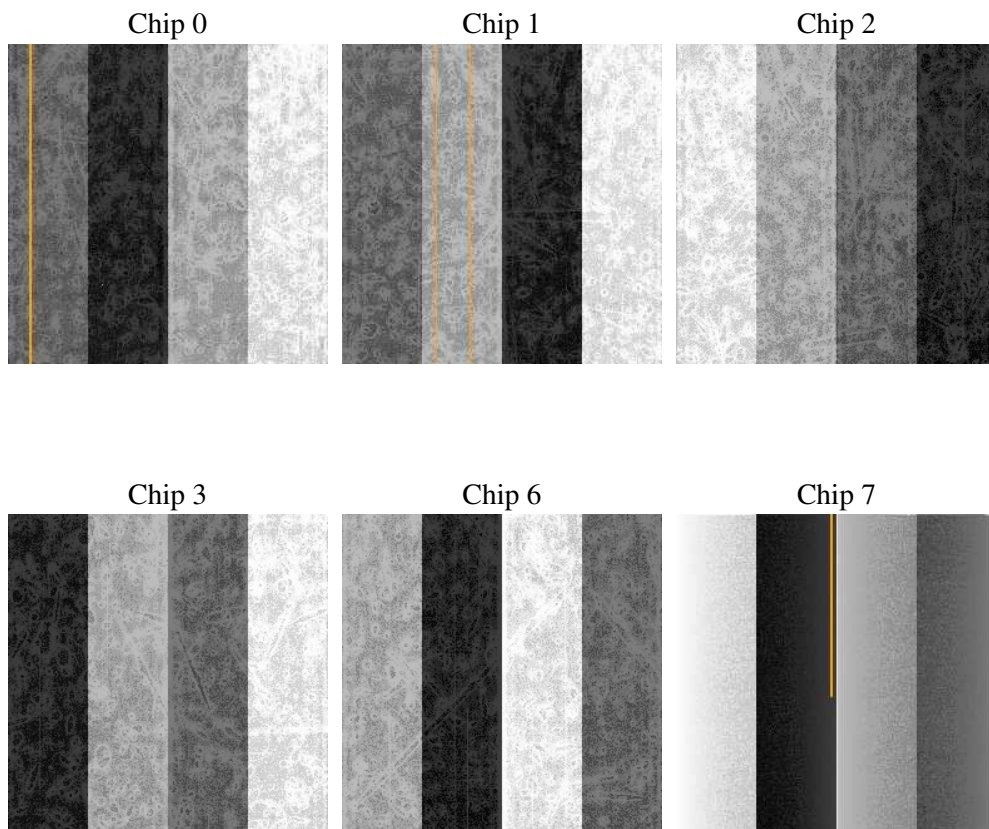
2 OBI

2.1 OBI

2.1.1 Images



2.1.2 Bias



2.1.3 Parameters

Parameter	Value
obi_num	0
ascdsver	7.5.2
caldbver	3.0.1
date	2005-03-11T12:42:22
revision	1

Parameter	Value
sched_exp_time	0.0
ontime	7237.1587475836
ontime0	4061.0059292614
ontime1	4187.4042973816
ontime2	3963.7760741115
ontime3	4031.8373164237
ontime6	4048.0414604247
ontime7	7237.1587475836
l1events	1321573

2.1.4 Events

	ccd 0	ccd 1	ccd 2	ccd 3	ccd 6	ccd 7
level 1 events	191454	197786	187297	194169	201263	349604
rejected events	37751	37650	38881	40208	40860	64711
rejected %	19%	19%	20%	20%	20%	18%

	ccd 0	ccd 1	ccd 2	ccd 3	ccd 6	ccd 7
grade 0 events	80344	83455	78805	81146	81542	48768
	41%	42%	42%	41%	40%	13%
grade 1 events	588	529	598	630	630	145
	0%	0%	0%	0%	0%	0%
grade 2 events	27709	28826	26636	27420	27578	90565
	14%	14%	14%	14%	13%	25%
grade 3 events	9414	9822	8858	9405	9520	18048
	4%	4%	4%	4%	4%	5%
grade 4 events	9274	9873	8856	9613	9876	17545
	4%	4%	4%	4%	4%	5%
grade 5 events	2150	2243	2040	2247	2383	6884
	1%	1%	1%	1%	1%	1%
grade 6 events	26962	28160	25261	26377	31887	109967
	14%	14%	13%	13%	15%	31%
grade 7 events	35013	34878	36243	37331	37847	57682
	18%	17%	19%	19%	18%	16%

2.2 Compared Parameters

Parameter	Planned	Actual
Instrument	ACIS	ACIS
Detector	ACIS-012367	ACIS-012367
Grating	NONE	NONE
Data mode	FAINT	FAINT
Observation mode	SECONDARY	SECONDARY
Pointing RA	0	160.0094280080183
Pointing Dec	0	3.975754942257098
Pointing Roll	0.0	270.1278188704127
SIM defocus (mm)	0	0.8505141146731063
SIM translation stage offset (mm)	0.000000	-0.01005468664627074
Observation start time	226852801.254923	226852800.22992
Observation start date	2005-03-10T14:40:01	2005-03-10T14:40:00
Observation end time	226873299.205851	226873298.18085
Observation end date	2005-03-10T20:21:39	2005-03-10T20:21:38
Read mode	TIMED	TIMED

Parameter	Planned	Actual
On-chip summing requested	N	N
Subarray requested	NONE	NONE
Alternating exposures requested	N	N
Primary exposure time	3.2	3.2

2.3 Star Slots

2.4 FID Slots

A Summary

A.1 Status

V&V Scientist	Beth Sundheim
Date (YYYY-MM-DD)	2005.03.11
V&V Edition	1
V&V Disposition and Status	OK
V&V Charge Time	7.233818

A.2 Comments