

# V&V Reference Report

## L2 ASCDS Version : 7.6.7

Observation 59740 - L2 Version 002  
Chandra X-Ray Center

L2 Processing Date: Feb 27 2006

## Contents

<b>1</b>	<b>Front</b>	<b>2</b>
<b>2</b>	<b>OBI</b>	<b>3</b>
2.1	OBI . . . . .	3
2.1.1	Images . . . . .	3
2.1.2	Bias . . . . .	3
2.1.3	Parameters . . . . .	4
2.1.4	Events . . . . .	4
2.2	Compared Parameters . . . . .	5
2.3	Aspect . . . . .	6
2.4	Star Slots . . . . .	8
2.5	FID Slots . . . . .	8
<b>A</b>	<b>Summary</b>	<b>9</b>
A.1	Status . . . . .	9
A.2	Comments . . . . .	9

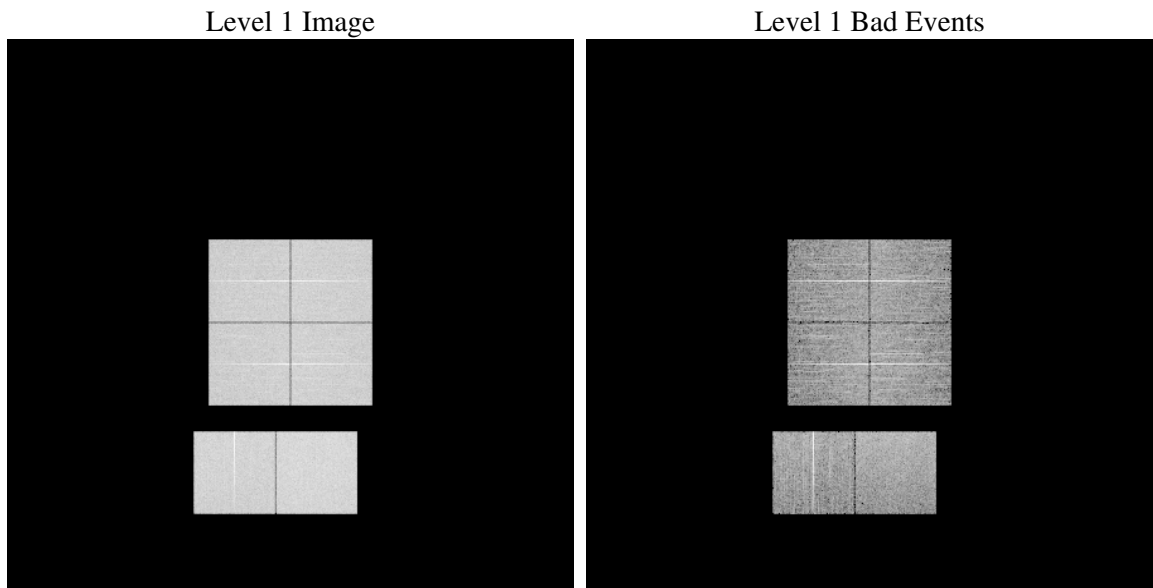
# 1 Front

seq_num	&#160
obs_id	59740
title	ACIS-012367 diagnostics
observer	CHANDRA engineering request/realtime commanding
object	&#160
dtcycle	0
cycle	P
ra_targ	0.0
dec_targ	0.0
ra_nom	180.47038996834
dec_nom	11.003255697198
roll_nom	140.65330644573
revision	2
ontime	8284.4187817276
livetime	8179.5164828352
ontime0	7406.1560414135
ontime1	7552.040735364
ontime2	7185.8511243165
ontime3	7402.8327120543
ontime6	7730.3762023747
ontime7	8284.4187817276
l2events	1109445

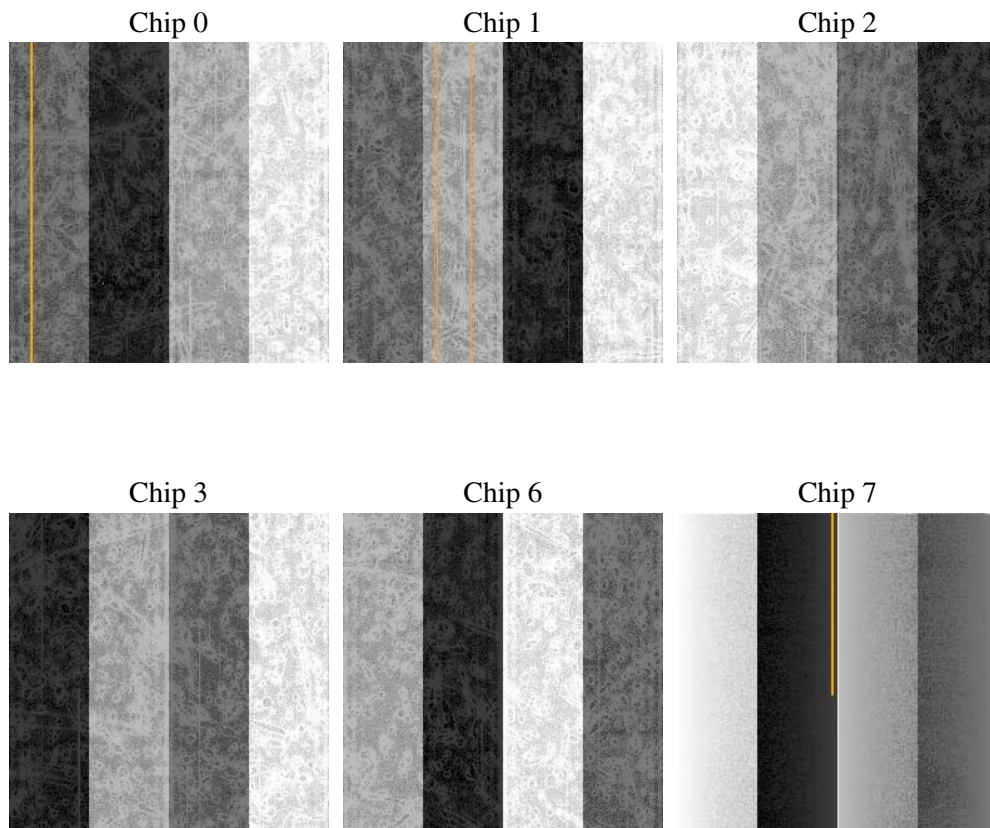
## 2 OBI

### 2.1 OBI

#### 2.1.1 Images



#### 2.1.2 Bias



### 2.1.3 Parameters

obi_num	0
ascdsver	7.6.7
caldbver	3.2.1
date	2006-02-27T17:34:26
revision	2

sched_exp_time	0.0
ontime	8287.2525655925
ontime0	7408.9487852752
ontime1	7554.7924392223
ontime2	7188.5617881715
ontime3	7405.7075359225
ontime6	7733.0458262563
ontime7	8287.2525655925
l1events	1492588

### 2.1.4 Events

	ccd 0	ccd 1	ccd 2	ccd 3	ccd 6	ccd 7
level 1 events	235133	241800	232861	241702	258758	282334
rejected events	50765	52748	51098	54768	56454	60141
rejected %	21%	21%	21%	22%	21%	21%

	ccd 0	ccd 1	ccd 2	ccd 3	ccd 6	ccd 7
grade 0 events	101144	103736	101667	104395	109670	36619
	43%	42%	43%	43%	42%	12%
grade 1 events	599	543	660	615	565	119
	0%	0%	0%	0%	0%	0%
grade 2 events	32253	33705	31077	32036	34682	68030
	13%	13%	13%	13%	13%	24%
grade 3 events	12237	11952	11929	12286	12625	15479
	5%	4%	5%	5%	4%	5%
grade 4 events	11958	12089	11775	12389	12657	15354
	5%	4%	5%	5%	4%	5%
grade 5 events	3214	3348	3092	3324	3648	6953
	1%	1%	1%	1%	1%	2%
grade 6 events	26861	27649	25402	25917	32751	86803
	11%	11%	10%	10%	12%	30%
grade 7 events	46867	48778	47259	50740	52160	52977
	19%	20%	20%	20%	20%	18%

## 2.2 Compared Parameters

Parameter	Planned	Actual	Parameter	Planned	Actual
Instrument	ACIS	ACIS	Obspar format version number	6	6
Detector	ACIS-012367	ACIS-012367	Obspar file type	PREDICTED	ACTUAL
Grating	NONE	NONE	Obspar update status	NONE	UPDATED
Data mode	FAINT	FAINT	On-chip summing requested	N	N
Observation mode	SECONDARY	SECONDARY	Subarray requested	NONE	NONE
Pointing RA	0	180.4703899683391	Alternating exposures requested	N	N
Pointing Dec	0	11.00325569719754	Primary exposure time	3.2	3.2
Pointing Roll	0.0	140.6533064457284			
SIM focus pos (mm)	-0.782348	-0.6828225247311905			
SIM defocus (mm)	0	0.8505141146731063			
SIM translation stage pos (mm)	-233.592463	250.466033080201			
SIM translation stage offset (mm)	0	-0.01005468664627074			
Observation start time	227122454.167152	227122453.14216			
Observation start date	2005-03-13T17:34:14	2005-03-13T17:34:13			
Observation end time	227145162.018181	227145160.99319			
Observation end date	2005-03-13T23:52:42	2005-03-13T23:52:40			
Read mode	TIMED	TIMED			

## 2.3 Aspect



## 2.4 Star Slots

## 2.5 FID Slots



## A Summary

### A.1 Status

V&V Scientist	Jen Lauer
V&V Date (YYYY-MM-DD)	2006.02.27
V&V Edition	1
V&V Disposition and Status	OK
V&V Charge Time	8.28441878

### A.2 Comments