

# V&V Reference Report

## L2 ASCDS Version : 8.5.1.1

Observation 59660 - L2 Version 3  
Chandra X-Ray Center

L2 Processing Date : Dec 23 2012

## Contents

<b>1</b>	<b>Front</b>	<b>2</b>
<b>2</b>	<b>OBI</b>	<b>3</b>
2.1	OBI . . . . .	3
2.1.1	Images . . . . .	3
2.1.2	Bias . . . . .	3
2.1.3	Parameters . . . . .	4
2.1.4	Events . . . . .	4
2.2	Compared Parameters . . . . .	5
2.3	Star Slots . . . . .	6
2.4	FID Slots . . . . .	6
<b>A</b>	<b>Summary</b>	<b>7</b>
A.1	Status . . . . .	7
A.2	Comments . . . . .	7

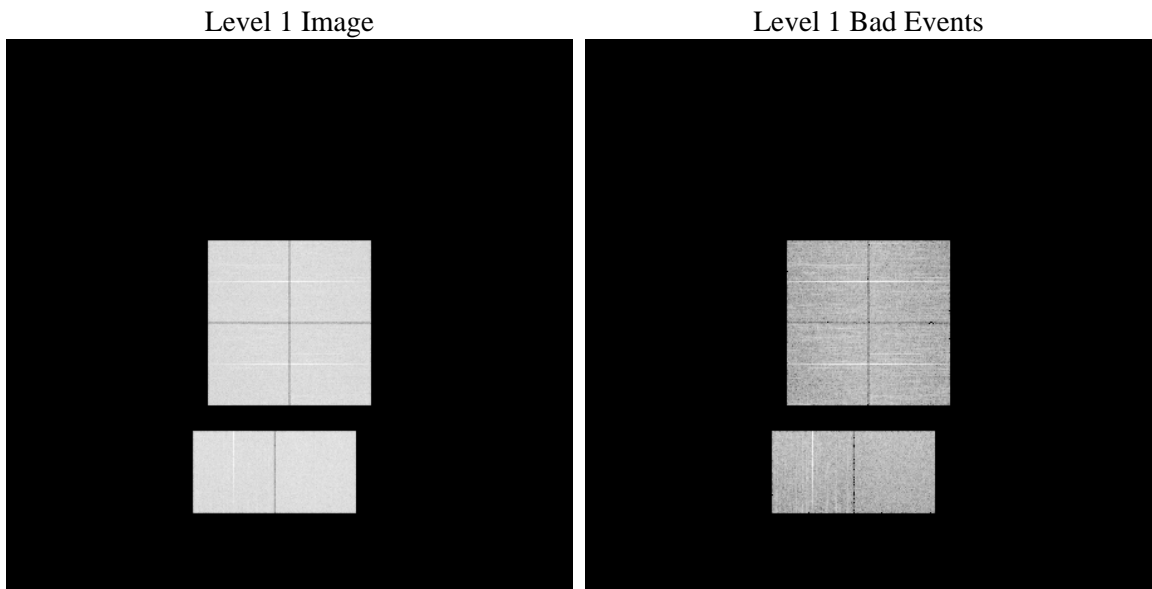
# 1 Front

seq_num	&#160	Sequence number
obs_id	59660	Observation id
title	ACIS-012367 diagnostics	Proposal title
observer	CHANDRA engineering request/realtime commanding	Principal investig
object	&#160	Source name
dtcycle	0	&#160
cycle	P	events from which exps? Prim/Second/Both
ra_targ	0.0	Observer's specified target RA [deg]
dec_targ	0.0	Observer's specified target Dec [deg]
ra_nom	222.03844862186	Nominal RA [deg]
dec_nom	-43.992707976669	Nominal Dec [deg]
roll_nom	341.95598693345	Nominal Roll [deg]
revision	3	Processing version of data
ontime	8182.3999695182	Sum of GTIs [s]
livetime	8078.7894942544	Livetime [s]
ontime0	7705.9762662649	Sum of GTIs [s]
ontime1	7799.9645649195	Sum of GTIs [s]
ontime2	7508.2769368291	Sum of GTIs [s]
ontime3	7683.2895337939	Sum of GTIs [s]
ontime6	7987.9412618279	Sum of GTIs [s]
ontime7	8182.3999695182	Sum of GTIs [s]
l2events	1103060	Number of level 2 events

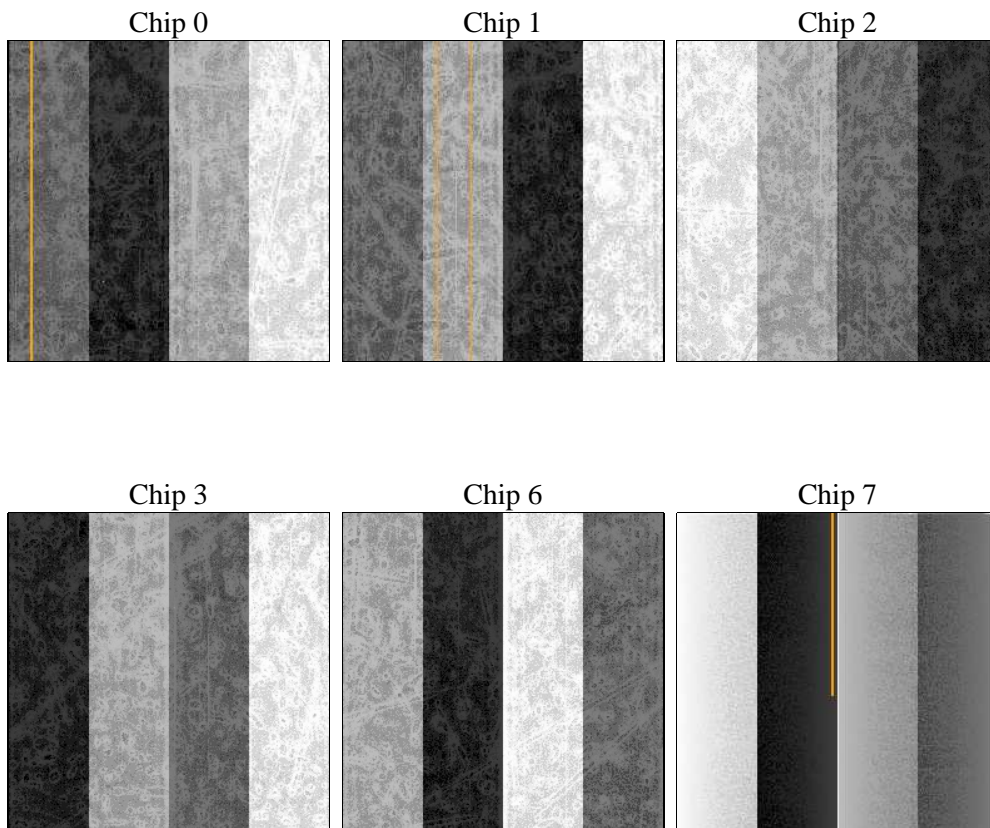
## 2 OBI

### 2.1 OBI

#### 2.1.1 Images



#### 2.1.2 Bias



### 2.1.3 Parameters

obi_num	1	Obi number	sched_exp_time	0.0	[s] Scheduled observation exposure time
ascdsver	8.5.1.1	Processing system revision	ontime	8182.3999695182	Sum of GTIs [s]
caldsver	4.5.5	&#160	ontime0	7705.9762662649	Sum of GTIs [s]
date	2012-12-23T10:18:09	Date and time of file creation	ontime1	7799.9645649195	Sum of GTIs [s]
revision	3	Processing version of data	ontime2	7508.2769368291	Sum of GTIs [s]
			ontime3	7683.2895337939	Sum of GTIs [s]
			ontime6	7987.9412618279	Sum of GTIs [s]
			ontime7	8182.3999695182	Sum of GTIs [s]
			l1events	1488867	Number of level 1 events

### 2.1.4 Events

	ccd 0	ccd 1	ccd 2	ccd 3	ccd 6	ccd 7		ccd 0	ccd 1	ccd 2	ccd 3	ccd 6	ccd 7
level 1 events	238868	239778	236488	243213	258466	272054	grade 0 events	102794	103228	102806	105347	110156	52162
rejected events	54291	53013	55067	57102	57252	52311		43%	43%	43%	43%	42%	19%
rejected %	22%	22%	23%	23%	22%	19%	grade 1 events	574	513	663	636	532	147
								0%	0%	0%	0%	0%	0%
							grade 2 events	32795	33526	30912	32162	35265	49089
								13%	13%	13%	13%	13%	18%
							grade 3 events	12285	12113	12099	12369	12884	22002
								5%	5%	5%	5%	4%	8%
							grade 4 events	11969	12073	11952	12362	12645	21984
								5%	5%	5%	5%	4%	8%
							grade 5 events	3278	3339	2955	3365	3540	8832
								1%	1%	1%	1%	1%	3%
							grade 6 events	27060	28021	25886	26252	32824	77192
								11%	11%	10%	10%	12%	28%
							grade 7 events	48113	46965	49215	50720	50620	40646
								20%	19%	20%	20%	19%	14%

## 2.2 Compared Parameters

Parameter	Planned	Actual
Instrument	ACIS	ACIS
Detector	ACIS-012367	ACIS-012367
Grating	NONE	NONE
Data mode	FAINT	FAINT
Observation mode	SECONDARY	SECONDARY
[deg] Pointing RA	0	222.0384486218567
[deg] Pointing Dec	0	-43.99270797666941
[deg] Pointing Roll	0.0	341.9559869334451
[mm] SIM focus pos	-0.782348	-0.6828225247311905
[mm] SIM defocus	0	0.8505141146731063
[mm] SIM translation stage pos	-233.592463	250.4635187648994
[mm] SIM translation stage offset	0	-0.007540371344731511
[s] Observation start time (MET)	232376292.80594	232376291.78093
Observation start date	2005-05-13T12:58:13	2005-05-13T12:58:11
[s] Observation end time (MET)	232400081.007023	232400079.98201
Observation end date	2005-05-13T19:34:41	2005-05-13T19:34:39
Read mode	TIMED	TIMED

Parameter	Planned	Actual
Obspar format version number	7	7
Obspar file type	PREDICTED	ACTUAL
Obspar update status	NONE	UPDATED
On-chip summing requested	N	N
Subarray requested	NONE	NONE
Alternating exposures requested	N	N
[s] Primary exposure time	3.2	3.2

## **2.3 Star Slots**

## **2.4 FID Slots**

## A Summary

### A.1 Status

V&V Scientist	Beth Sundheim
V&V Date (YYYY-MM-DD)	2013.01.15
V&V Edition	1
V&V Disposition and Status	OK
V&V Charge Time	8.1823999695182

### A.2 Comments