

V&V Reference Report

L2 ASCDS Version : 8.5.1.1

Observation 5950 - L2 Version 3
Chandra X-Ray Center

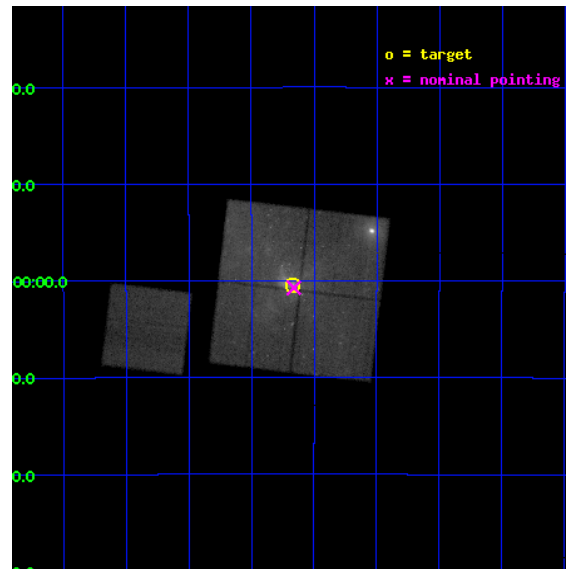
L2 Processing Date : Dec 26 2012

Contents

1	Front	2
2	OBI	3
2.1	OBI	3
2.1.1	Images	3
2.1.2	Bias	3
2.1.3	Parameters	4
2.1.4	Events	4
2.2	Compared Parameters	5
2.3	Aspect	6
2.4	Star Slots	9
2.4.1	Slot 3	9
2.4.2	Slot 4	10
2.4.3	Slot 5	11
2.4.4	Slot 6	12
2.4.5	Slot 7	13
2.5	FID Slots	14
2.5.1	Slot 0	14
2.5.2	Slot 1	15
2.5.3	Slot 2	16
A	Summary	17
A.1	Status	17
A.2	Comments	17

1 Front

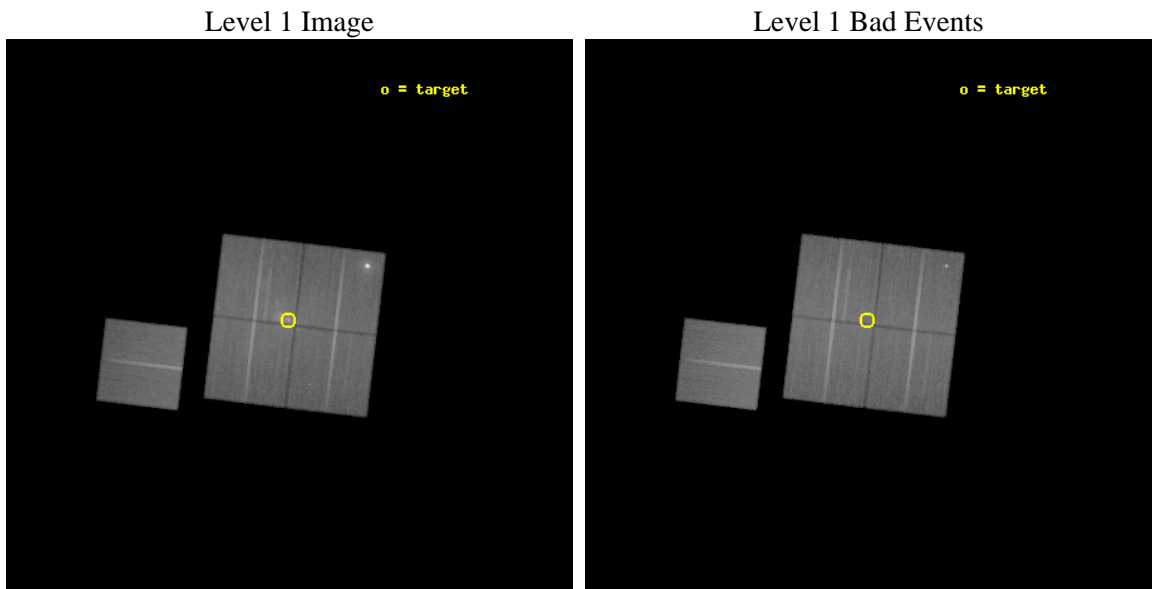
seq_num	600469	Sequence number
obs_id	5950	Observation id
title	Simultaneous Gamma-Ray to Sub-Millimeter Monitoring of Sagittarius A*	Proposal title
observer	Dr. Frederick Baganoff	Principal investigator
object	Sgr A*	Source name
dtcycle	0	
cycle	P	events from which exps? Prim/Second/Both
ra_targ	266.416667	Observer's specified target RA [deg]
dec_targ	-29.007778	Observer's specified target Dec [deg]
ra_nom	266.41519201128	Nominal RA [deg]
dec_nom	-29.012248288366	Nominal Dec [deg]
roll_nom	276.74669390386	Nominal Roll [deg]
revision	3	Processing version of data
ontime	49175.299905419	Sum of GTIs [s]
livetime	48532.788409826	Livetime [s]
ontime0	49175.299905419	Sum of GTIs [s]
ontime1	49175.299905419	Sum of GTIs [s]
ontime2	49175.299905419	Sum of GTIs [s]
ontime3	49175.299905419	Sum of GTIs [s]
ontime6	49175.299905419	Sum of GTIs [s]
l2events	483964	Number of level 2 events



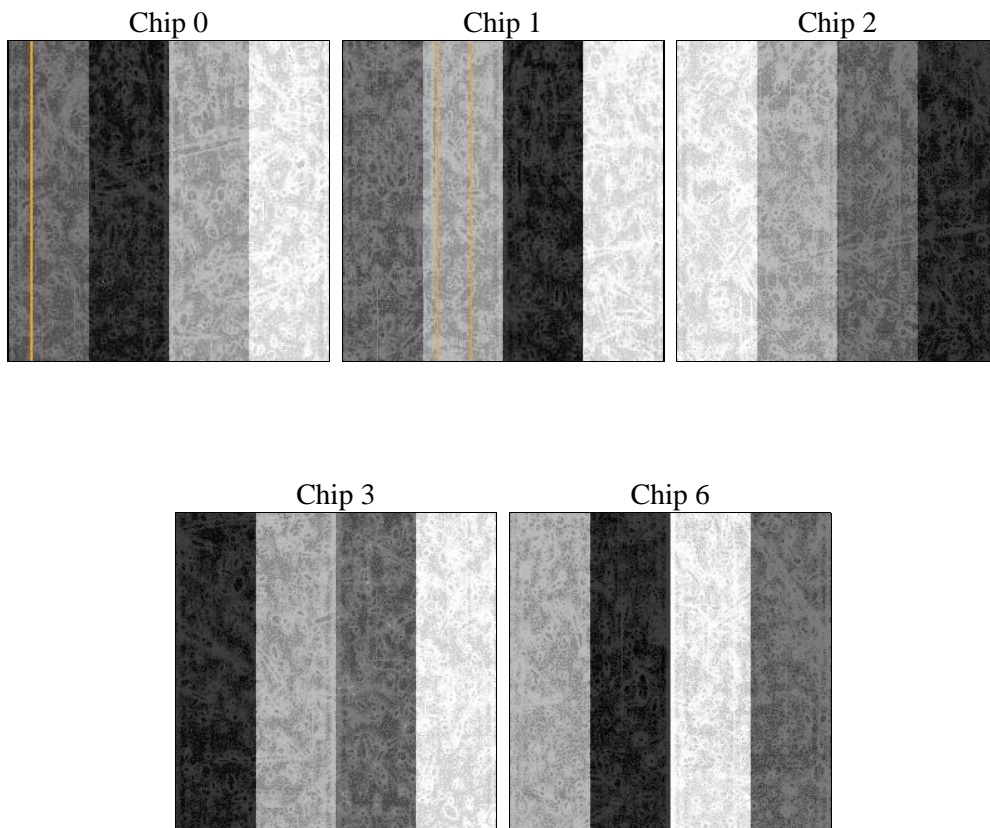
2 OBI

2.1 OBI

2.1.1 Images



2.1.2 Bias



2.1.3 Parameters

obi_num	0	Obi number	sched_exp_time	49000.000000	[s] Scheduled observation exposure time
ascdsver	8.5.1.1	Processing system revision	ontime	49175.299905419	Sum of GTIs [s]
caldsver	4.5.5	 	ontime0	49175.299905419	Sum of GTIs [s]
date	2012-12-26T16:32:56	Date and time of file creation	ontime1	49175.299905419	Sum of GTIs [s]
revision	3	Processing version of data	ontime2	49175.299905419	Sum of GTIs [s]
			ontime3	49175.299905419	Sum of GTIs [s]
			ontime6	49175.299905419	Sum of GTIs [s]
			l1events	2207080	Number of level 1 events

2.1.4 Events

	ccd 0	ccd 1	ccd 2	ccd 3	ccd 6		ccd 0	ccd 1	ccd 2	ccd 3	ccd 6
level 1 events	391535	490752	437057	485538	402198	grade 0 events	42181	96413	50649	83921	24560
rejected events	312359	322923	348715	348208	347513		10%	19%	11%	17%	6%
rejected %	79%	65%	79%	71%	86%	grade 1 events	334	1216	458	696	186
							0%	0%	0%	0%	0%
						grade 2 events	14486	28967	15260	21461	10694
							3%	5%	3%	4%	2%
						grade 3 events	6195	11497	6121	8924	4939
							1%	2%	1%	1%	1%
						grade 4 events	5869	11195	6315	8715	4893
							1%	2%	1%	1%	1%
						grade 5 events	16229	17879	15404	18280	17941
							4%	3%	3%	3%	4%
						grade 6 events	10771	20341	10331	14831	9845
							2%	4%	2%	3%	2%
						grade 7 events	295470	303244	332519	328710	329140
							75%	61%	76%	67%	81%

2.2 Compared Parameters

Parameter	Planned	Actual	Parameter	Planned	Actual
Instrument	ACIS	ACIS	Obspar format version number	7	7
Detector	ACIS-01236	ACIS-01236	Obspar file type	PREDICTED	ACTUAL
Grating	NONE	NONE	Obspar update status	NONE	UPDATED
Data mode	FAINT	FAINT	Number of optional ACIS chips dropped	0	0
Observation mode	POINTING	POINTING	On-chip summing requested	N	N
[deg] Pointing RA	266.396354	266.415192011281	Subarray requested	NONE	NONE
[deg] Pointing Dec	-28.990358	-29.01224828836606	Alternating exposures requested	N	N
[deg] Pointing Roll	276.528875	276.7466939038586	[s] Primary exposure time	0.000000	3.1
[s] Window start time (MET)	238621624.184000	238621624.184000			
[s] Window stop time (MET)	238670644.184000	238670644.184000			
[mm] SIM focus pos	-0.782348	-0.7809083437167272			
[mm] SIM defocus	0	0.001439871863259334			
[mm] SIM translation stage pos	-233.592463	-233.5874344608287			
[mm] SIM translation stage offset	0	-0.005018542100998502			
[s] Observation start time (MET)	238623402.184000	238622307.91619			
Observation start date	2005-07-24T20:15:38	2005-07-24T19:58:27			
[s] Observation end time (MET)	238672402.184000	238673270.91852			
Observation end date	2005-07-25T09:52:18	2005-07-25T10:07:50			
Read mode	TIMED	TIMED			

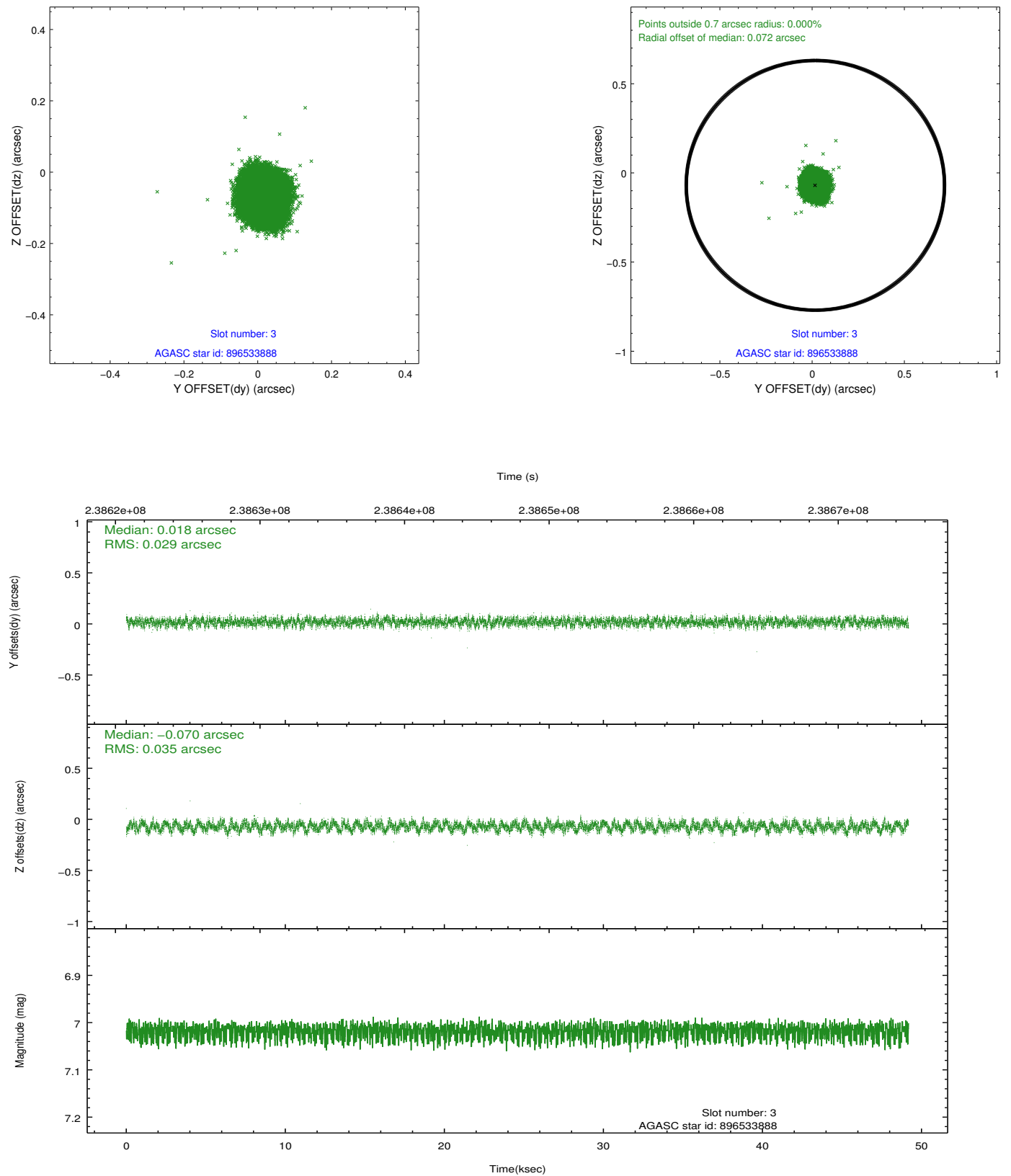
2.3 Aspect

Slot Statistics

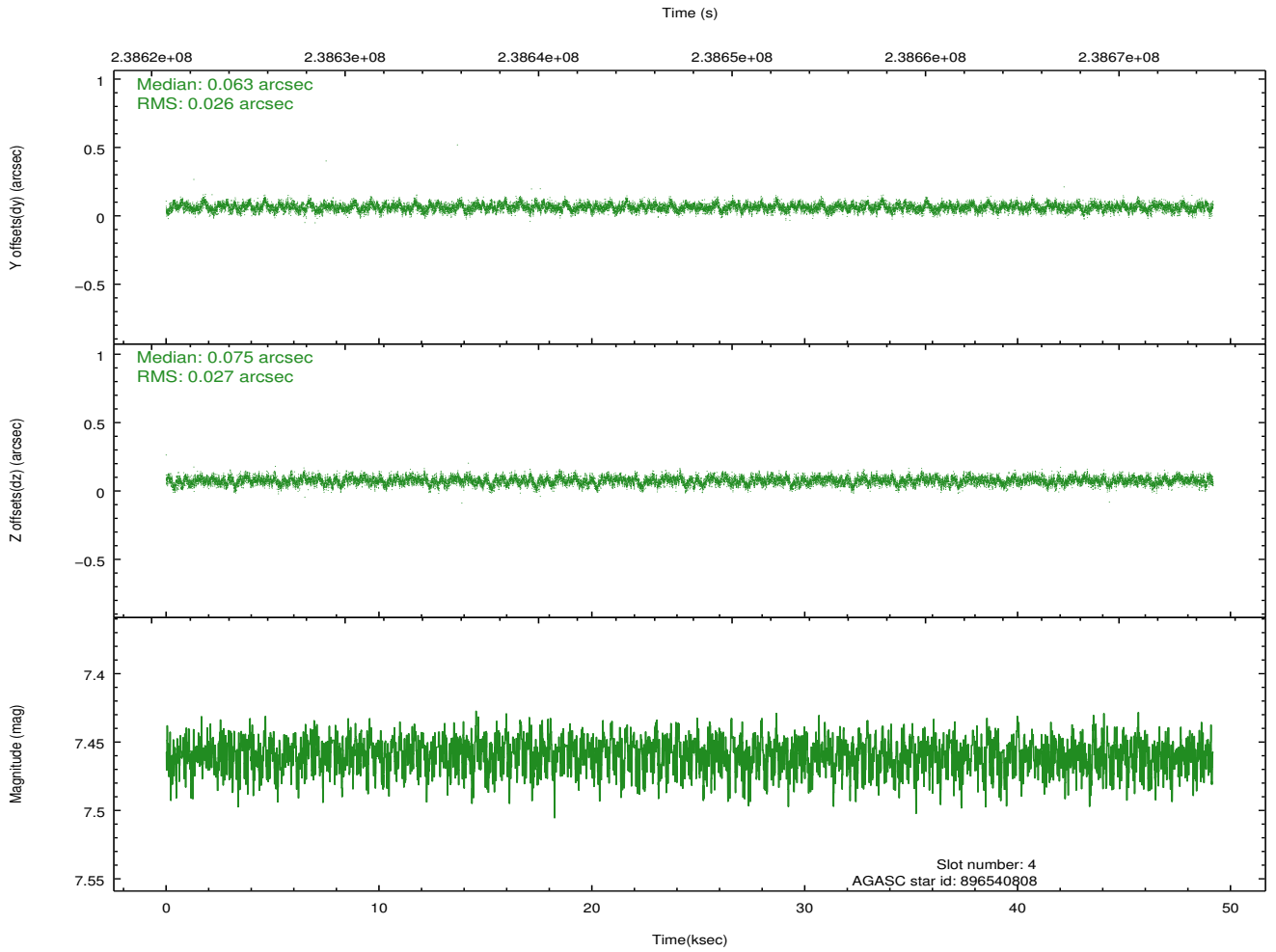
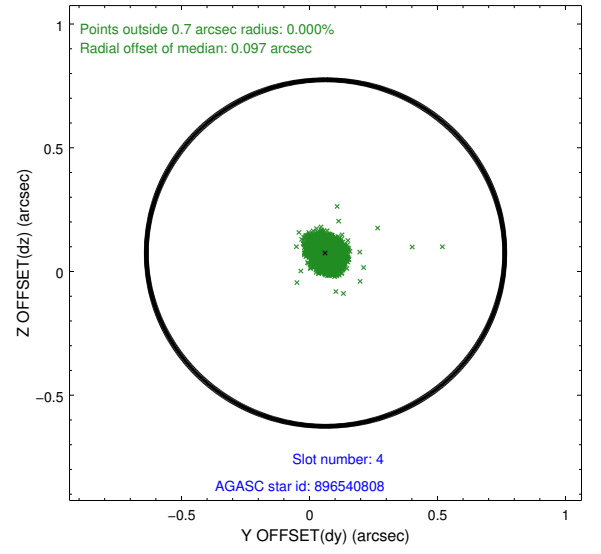
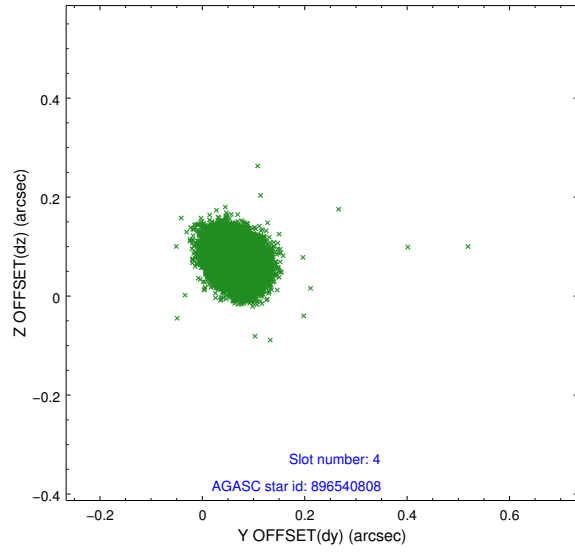
slot	status	id	mag	n_pts	med_dy	med_dz	dr1	dr2	ra	dec	mean_y	mean_z
0	FID	ACIS-I-1	7.24	11996	0.008	0.011	0.010	0.018	0.000000	0.000000	932.35	-833.47
1	FID	ACIS-I-5	7.23	11995	-0.164	0.027	0.008	0.015	0.000000	0.000000	-1815.94	1064.03
2	FID	ACIS-I-6	7.25	11995	0.065	0.032	0.008	0.013	0.000000	0.000000	397.97	1708.53
3	GUIDE	896533888	7.02	23991	0.018	-0.070	0.049	0.076	266.666434	-29.392757	1536.74	676.89
4	GUIDE	896540808	7.46	23991	0.063	0.075	0.040	0.065	265.985401	-29.308604	994.27	-1412.04
5	GUIDE	896541360	7.72	23920	0.057	0.018	0.047	0.077	266.684478	-29.453744	1761.46	707.66
6	GUIDE	896541576	8.19	23985	-0.060	-0.023	0.060	0.096	267.051055	-28.762912	-572.82	2145.16
7	GUIDE	896404568	7.86	23988	-0.079	0.006	0.051	0.085	265.687293	-28.431080	-2248.74	-2002.17

2.4 Star Slots

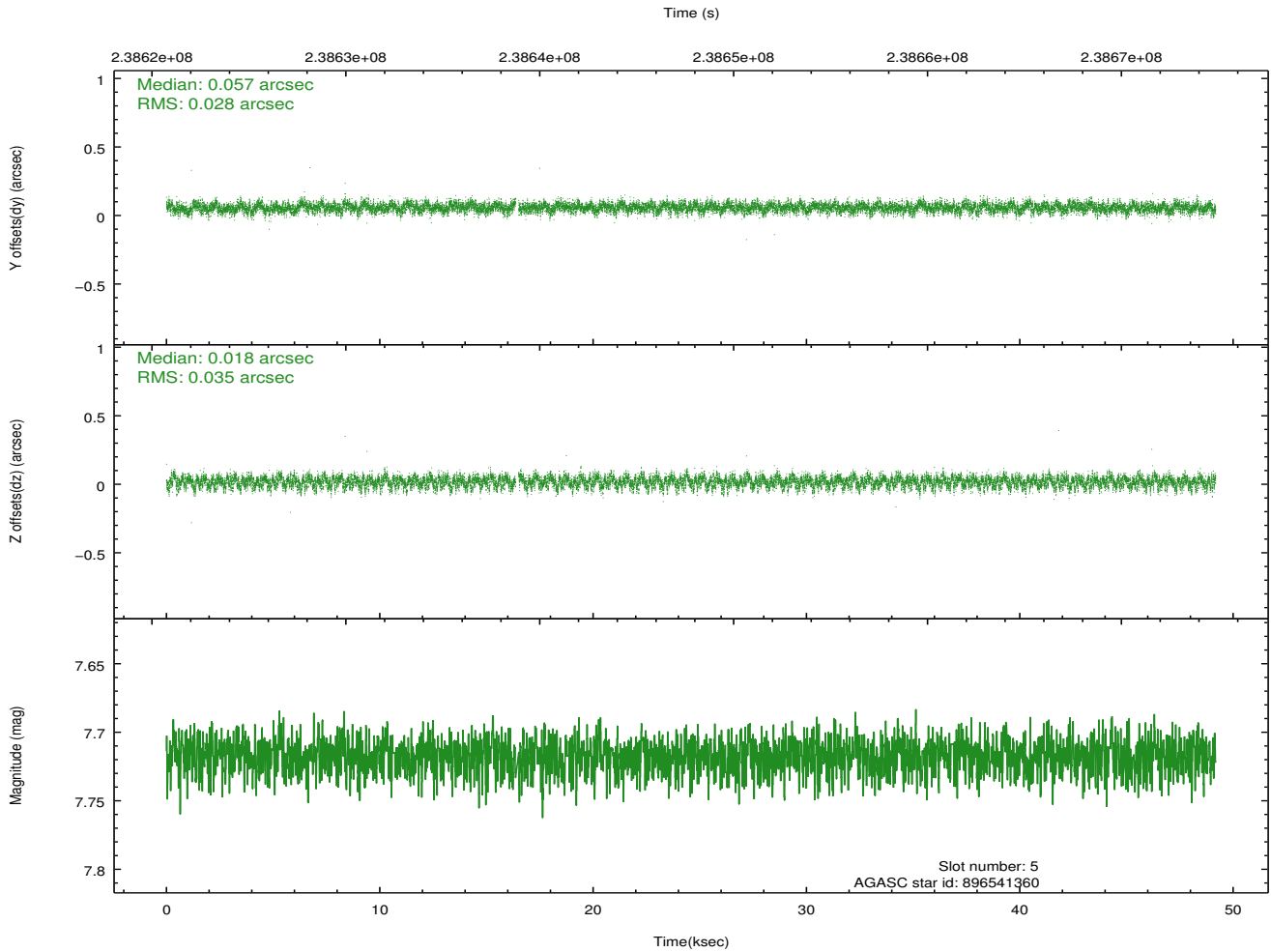
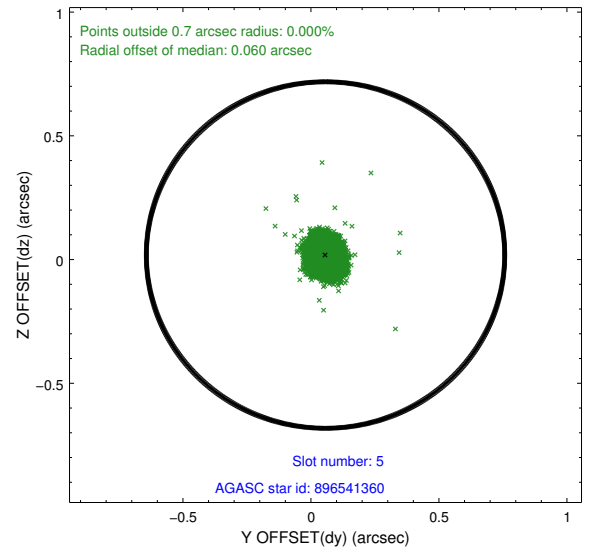
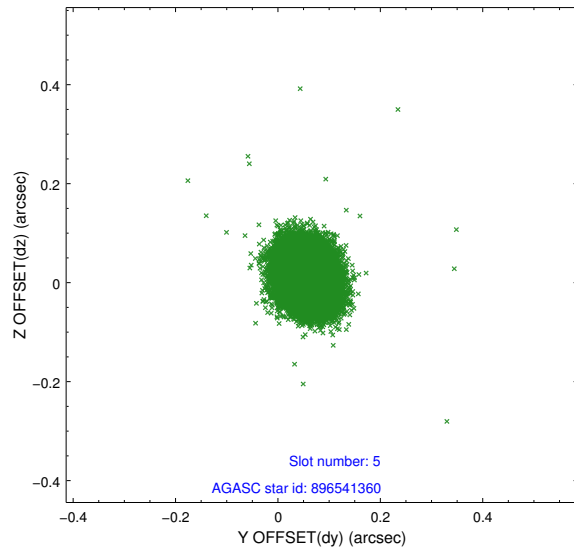
2.4.1 Slot 3



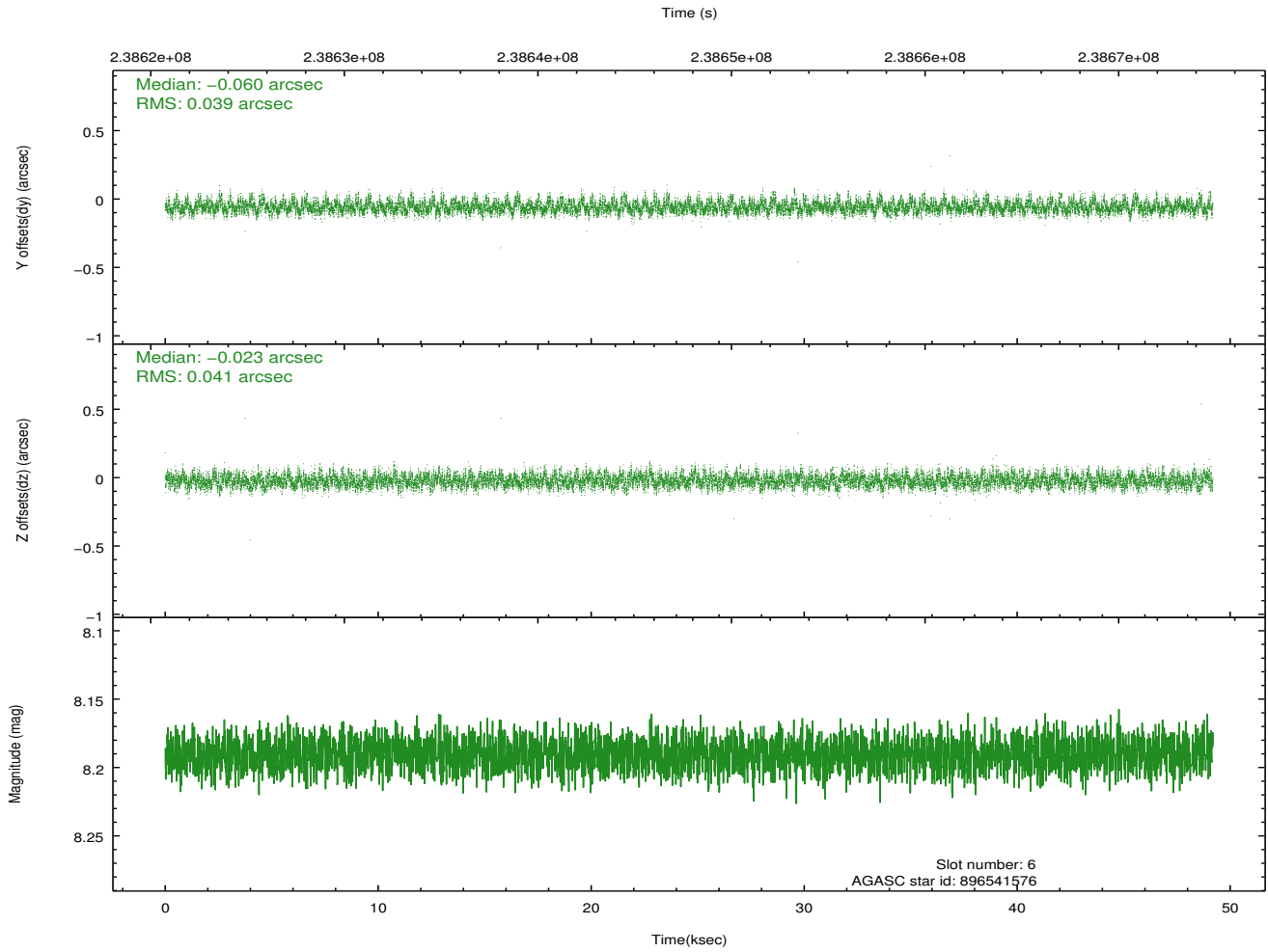
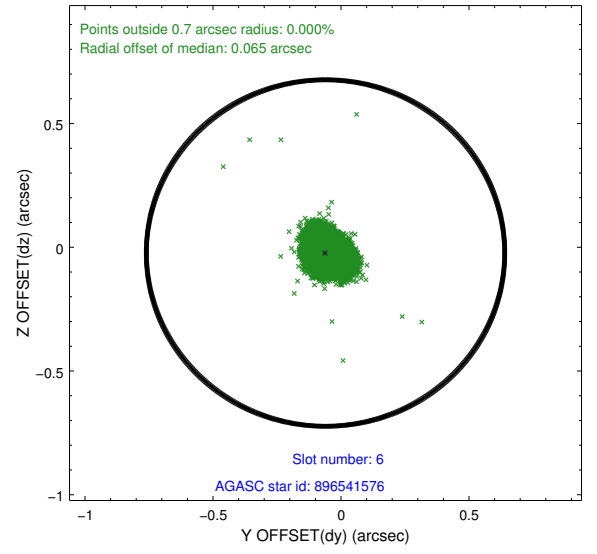
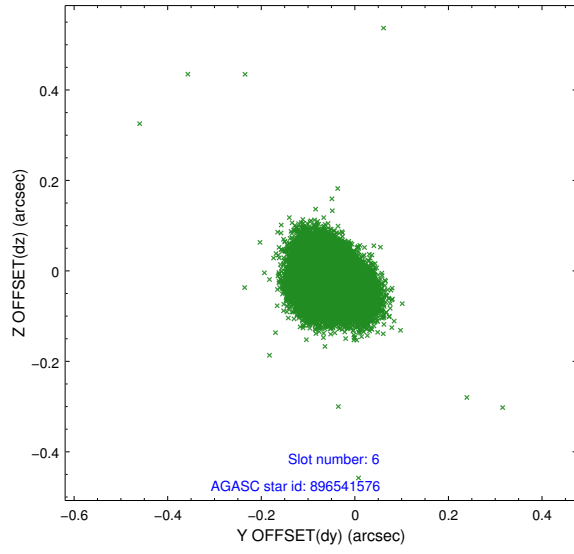
2.4.2 Slot 4



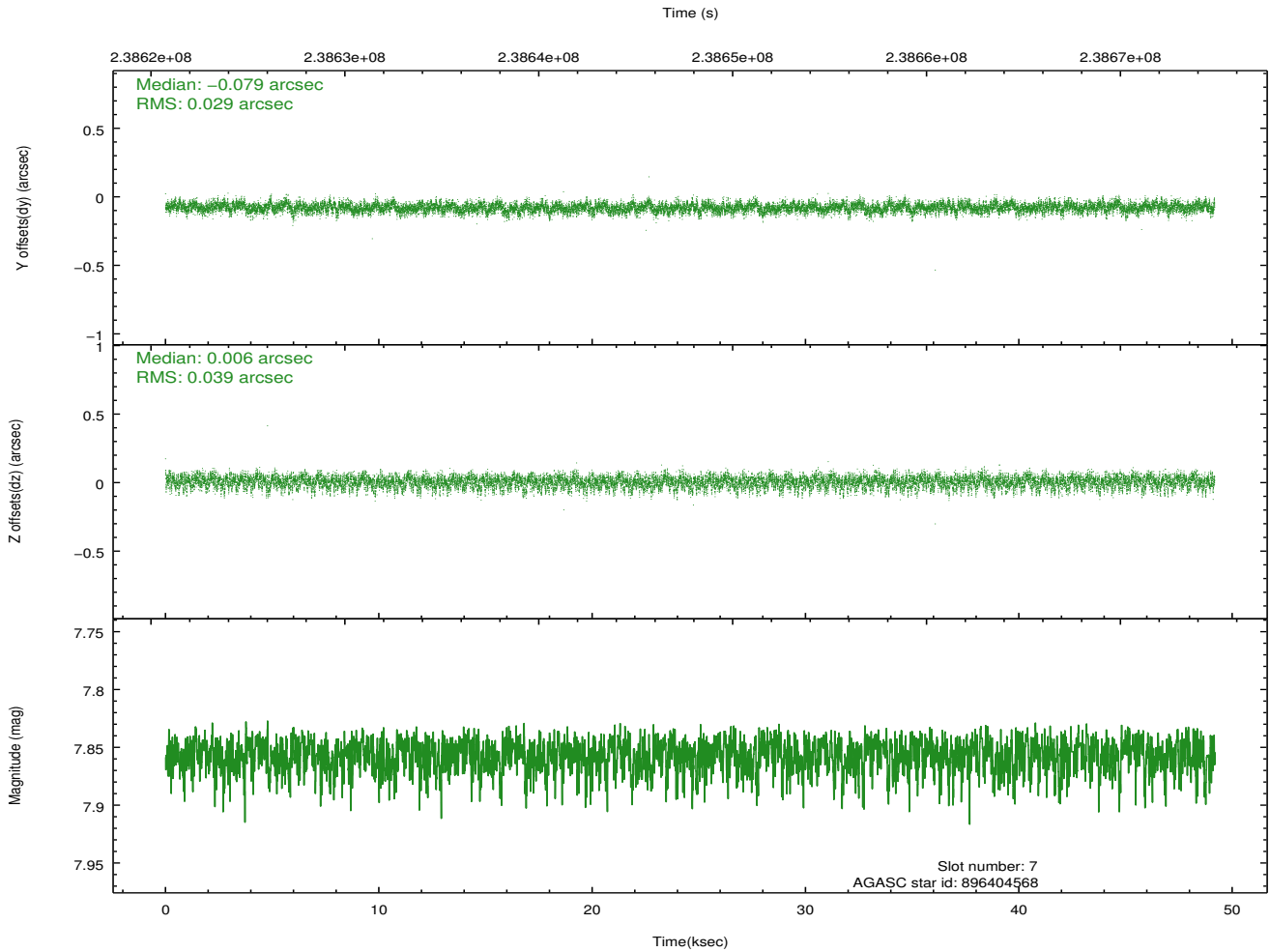
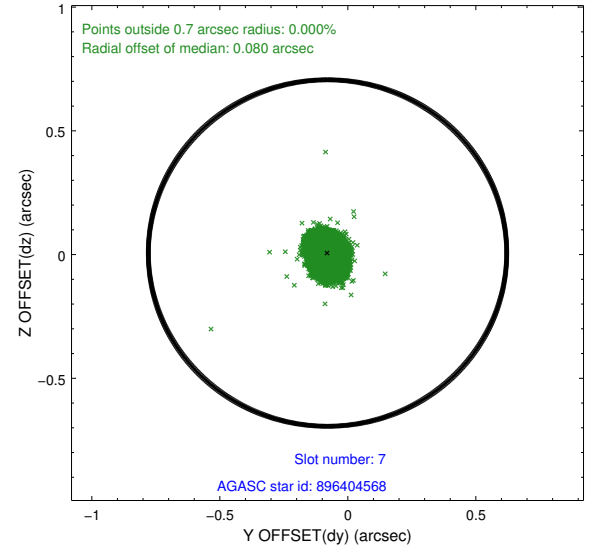
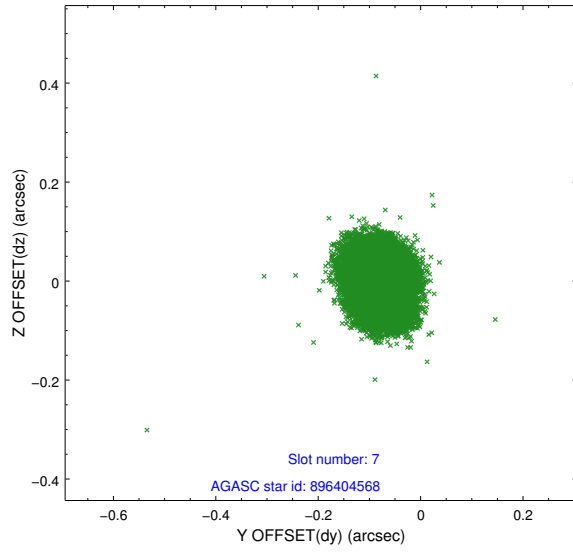
2.4.3 Slot 5



2.4.4 Slot 6

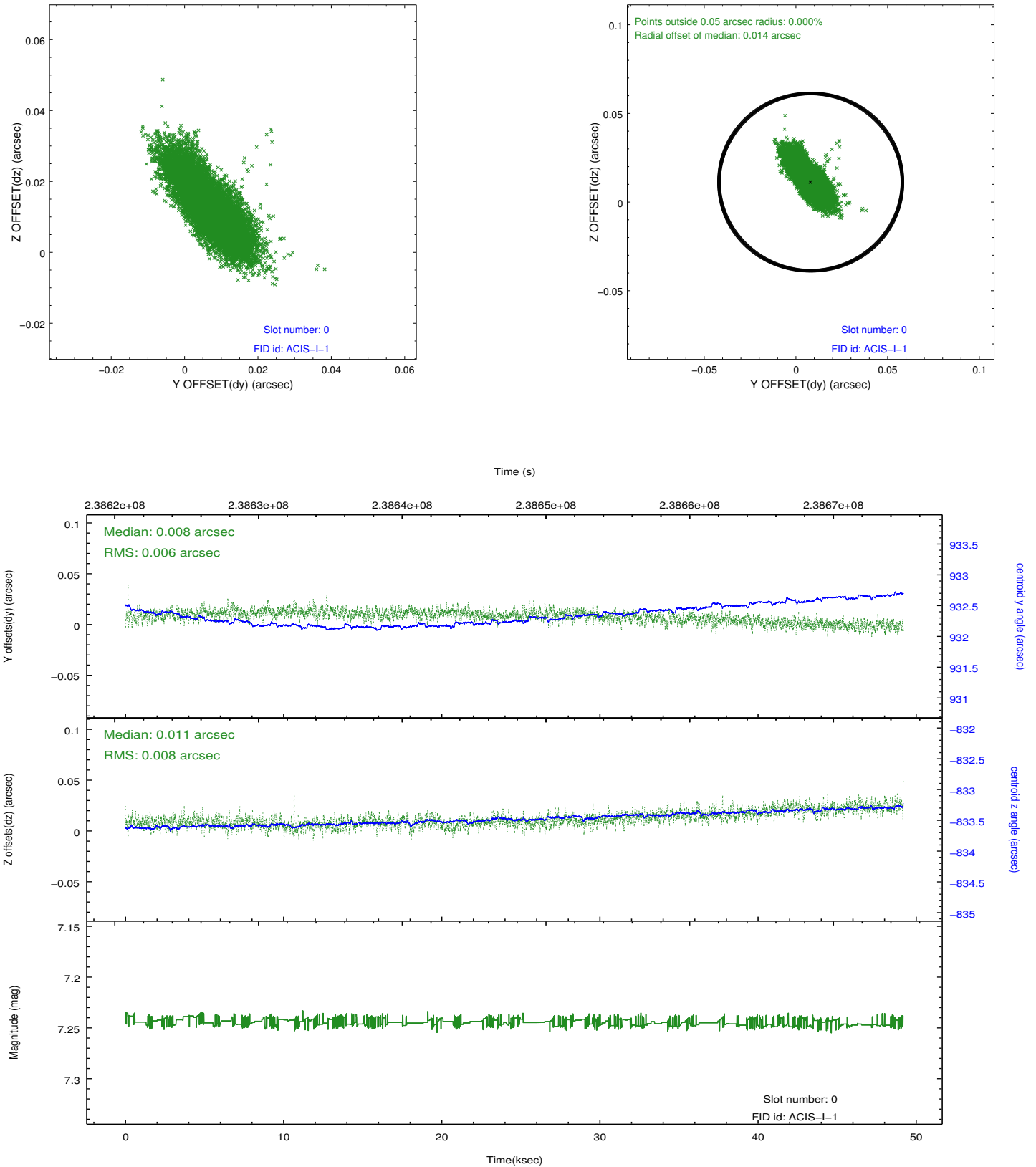


2.4.5 Slot 7

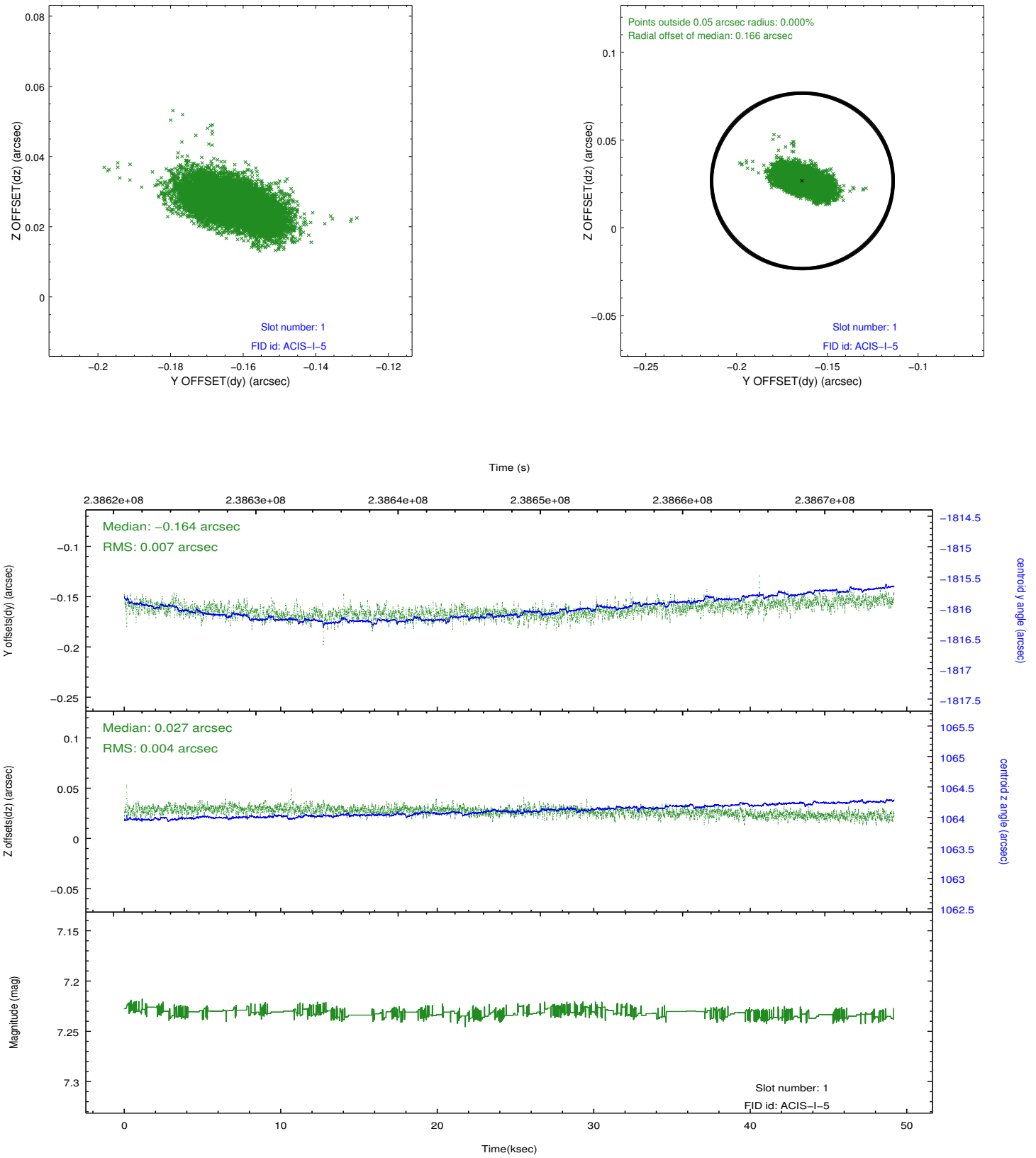


2.5 FID Slots

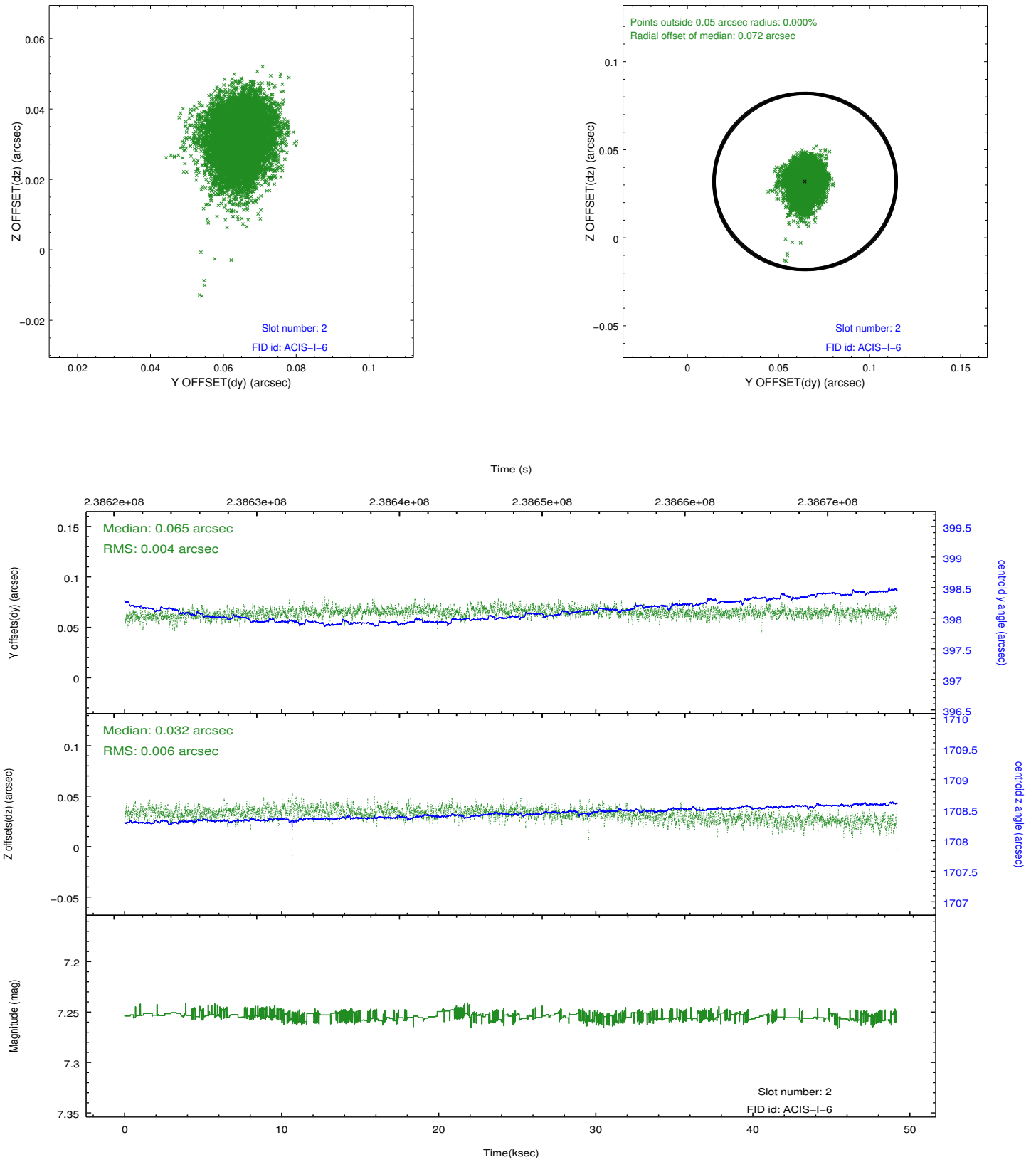
2.5.1 Slot 0



2.5.2 Slot 1



2.5.3 Slot 2



A Summary

A.1 Status

V&V Scientist	Beth Sundheim
V&V Date (YYYY-MM-DD)	2013.01.23
V&V Edition	1
V&V Disposition and Status	OK
V&V Charge Time	49.38614

A.2 Comments

Charge time for this observation remains at previous value of 49.38614 ksec.

Window constraint met except for final 2400 seconds of the observation.