

V&V Reference Report

L2 ASCDS Version : 8.4.3

Observation 59010 - L2 Version 2
Chandra X-Ray Center

L2 Processing Date : Mar 30 2012

Contents

1	Front	2
2	OBI	3
2.1	OBI	3
2.1.1	Images	3
2.1.2	Bias	3
2.1.3	Parameters	4
2.1.4	Events	4
2.2	Compared Parameters	5
2.3	Star Slots	6
2.4	FID Slots	6
A	Summary	7
A.1	Status	7
A.2	Comments	7

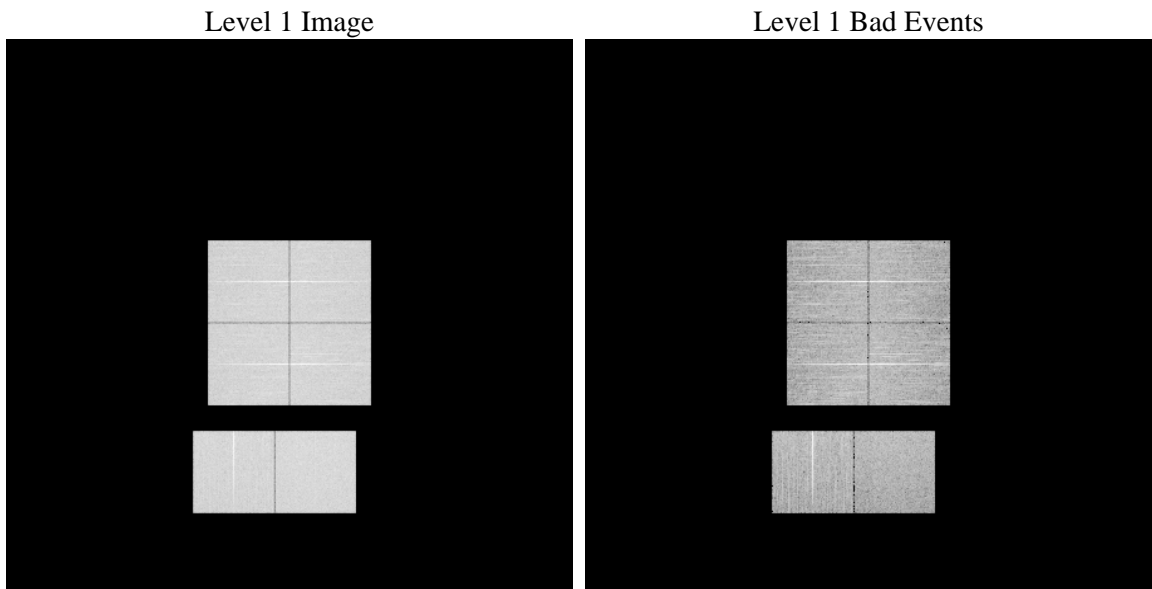
1 Front

seq_num	 	Sequence number
obs_id	59010	Observation id
title	ACIS-012367 diagnostics	Proposal title
observer	CHANDRA engineering request/realtime commanding	Principal investig
object	 	Source name
dtcycle	0	
cycle	P	events from which exps? Prim/Second/Both
ra_targ	0.0	Observer's specified target RA [deg]
dec_targ	0.0	Observer's specified target Dec [deg]
ra_nom	224.96967395008	Nominal RA [deg]
dec_nom	10.800696846372	Nominal Dec [deg]
roll_nom	140.99620436131	Nominal Roll [deg]
revision	2	Processing version of data
ontime	8271.6077365875	Sum of GTIs [s]
livetime	8166.8676588626	Livetime [s]
ontime0	8271.5666965842	Sum of GTIs [s]
ontime1	8271.5256565809	Sum of GTIs [s]
ontime2	8268.2437258363	Sum of GTIs [s]
ontime3	8271.6487765908	Sum of GTIs [s]
ontime6	8271.4435766041	Sum of GTIs [s]
ontime7	8271.6077365875	Sum of GTIs [s]
l2events	940533	Number of level 2 events

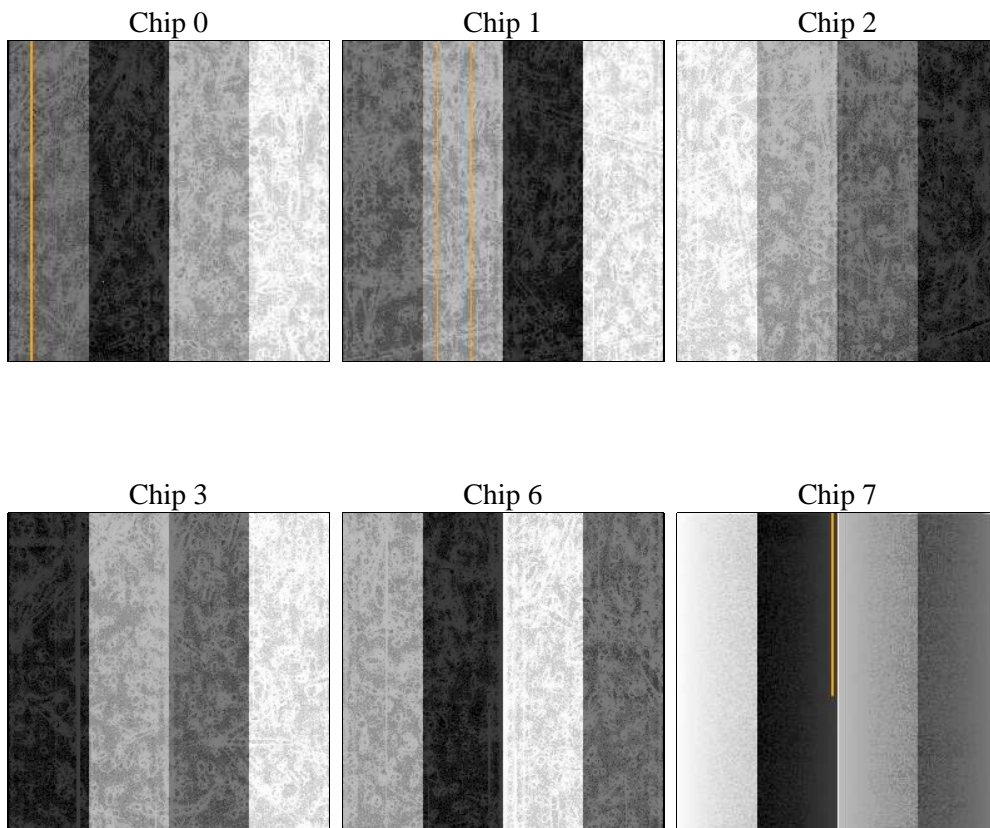
2 OBI

2.1 OBI

2.1.1 Images



2.1.2 Bias



2.1.3 Parameters

obi_num	0	Obi number	sched_exp_time	0.0	[s] Scheduled observation exposure time
ascdsver	8.4.3	Processing system revision	ontime	8271.6077365875	Sum of GTIs [s]
caldsver	4.4.8	 	ontime0	8271.5666965842	Sum of GTIs [s]
date	2012-03-30T08:19:22	Date and time of file creation	ontime1	8271.5256565809	Sum of GTIs [s]
revision	2	Processing version of data	ontime2	8268.2437258363	Sum of GTIs [s]
			ontime3	8271.6487765908	Sum of GTIs [s]
			ontime6	8271.4435766041	Sum of GTIs [s]
			ontime7	8271.6077365875	Sum of GTIs [s]
			l1events	1396495	Number of level 1 events

2.1.4 Events

	ccd 0	ccd 1	ccd 2	ccd 3	ccd 6	ccd 7		ccd 0	ccd 1	ccd 2	ccd 3	ccd 6	ccd 7
level 1 events	224942	225087	230492	230334	236049	249591	grade 0 events	85939	86265	88556	88390	89224	42242
rejected events	67052	65731	71213	71295	70651	59843		38%	38%	38%	38%	37%	16%
rejected %	29%	29%	30%	30%	29%	23%	grade 1 events	592	538	638	648	491	164
								0%	0%	0%	0%	0%	0%
							grade 2 events	27851	28773	26984	27421	28631	41552
								12%	12%	11%	11%	12%	16%
							grade 3 events	10694	10358	10400	10584	10643	18459
								4%	4%	4%	4%	4%	7%
							grade 4 events	10172	10367	10506	10568	10333	18443
								4%	4%	4%	4%	4%	7%
							grade 5 events	3774	3980	3600	4178	4304	10129
								1%	1%	1%	1%	1%	4%
							grade 6 events	23299	23654	22910	22137	26628	69126
								10%	10%	9%	9%	11%	27%
							grade 7 events	62621	61152	66898	66408	65795	49476
								27%	27%	29%	28%	27%	19%

2.2 Compared Parameters

Parameter	Planned	Actual	Parameter	Planned	Actual
Instrument	ACIS	ACIS	Obspar format version number	7	7
Detector	ACIS-012367	ACIS-012367	Obspar file type	PREDICTED	ACTUAL
Grating	NONE	NONE	Obspar update status	NONE	UPDATED
Data mode	FAINT	FAINT	On-chip summing requested	N	N
Observation mode	SECONDARY	SECONDARY	Subarray requested	NONE	NONE
[deg] Pointing RA	0	224.9696739500767	Alternating exposures requested	N	N
[deg] Pointing Dec	0	10.80069684637165	[s] Primary exposure time	3.2	3.2
[deg] Pointing Roll	0.0	140.9962043613092			
[mm] SIM focus pos	-0.782348	-0.7809083437167272			
[mm] SIM defocus	0	0.7524282956875696			
[mm] SIM translation stage pos	-233.592463	250.466033080201			
[mm] SIM translation stage offset	0	-0.01005468664627074			
[s] Observation start time (MET)	261847830.114614	261847829.08961			
Observation start date	2006-04-19T15:30:30	2006-04-19T15:30:29			
[s] Observation end time (MET)	261871661.365726	261871660.34072			
Observation end date	2006-04-19T22:07:41	2006-04-19T22:07:40			
Read mode	TIMED	TIMED			

2.3 Star Slots

2.4 FID Slots

A Summary

A.1 Status

V&V Scientist	Jen Lauer
V&V Date (YYYY-MM-DD)	2012.04.02
V&V Edition	1
V&V Disposition and Status	OK
V&V Charge Time	8.2716077365875

A.2 Comments