

V&V Reference Report

L2 ASCDS Version : 8.4.4

Observation 58340 - L2 Version 2
Chandra X-Ray Center

L2 Processing Date : Apr 27 2012

Contents

1	Front	2
2	OBI	3
2.1	OBI	3
2.1.1	Images	3
2.1.2	Bias	3
2.1.3	Parameters	4
2.1.4	Events	4
2.2	Compared Parameters	5
2.3	Star Slots	6
2.4	FID Slots	6
A	Summary	7
A.1	Status	7
A.2	Comments	7

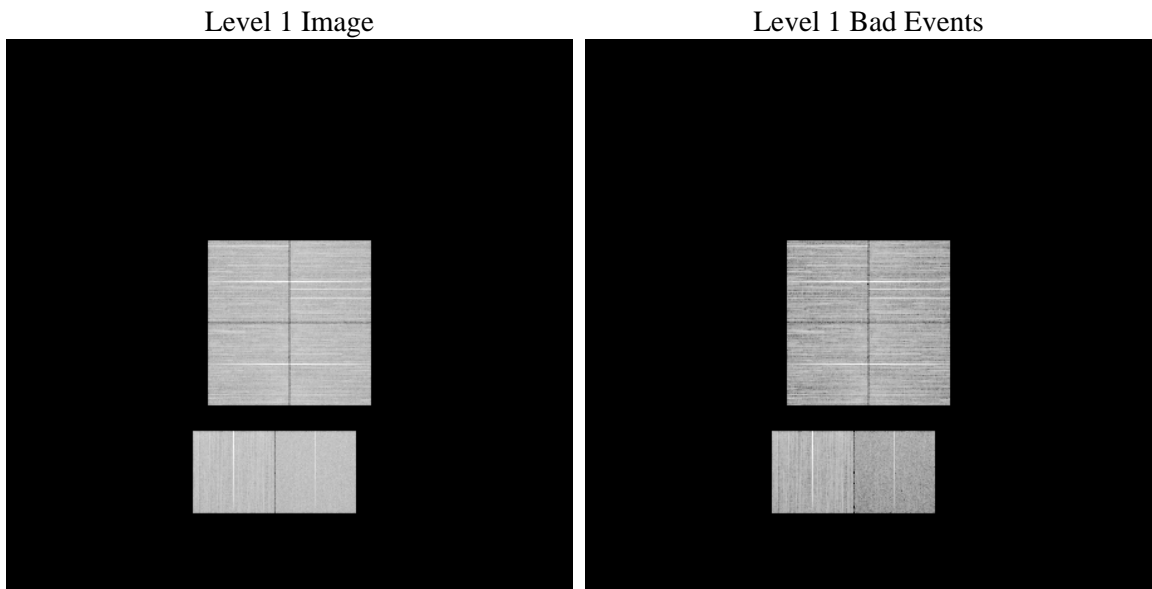
1 Front

seq_num	 	Sequence number
obs_id	58340	Observation id
title	ACIS-012367 diagnostics	Proposal title
observer	CHANDRA engineering request/realtime commanding	Principal investig
object	 	Source name
dtcycle	0	
cycle	P	events from which exps? Prim/Second/Both
ra_targ	0.0	Observer's specified target RA [deg]
dec_targ	0.0	Observer's specified target Dec [deg]
ra_nom	250.03733248825	Nominal RA [deg]
dec_nom	-43.007207934312	Nominal Dec [deg]
roll_nom	309.08922391107	Nominal Roll [deg]
revision	2	Processing version of data
ontime	8243.1999693513	Sum of GTIs [s]
livetime	8138.8196078802	Livetime [s]
ontime0	6509.2704749107	Sum of GTIs [s]
ontime1	6655.1149594784	Sum of GTIs [s]
ontime2	6308.328866899	Sum of GTIs [s]
ontime3	6425.0051069856	Sum of GTIs [s]
ontime6	6901.4303615093	Sum of GTIs [s]
ontime7	8243.1999693513	Sum of GTIs [s]
l2events	611303	Number of level 2 events

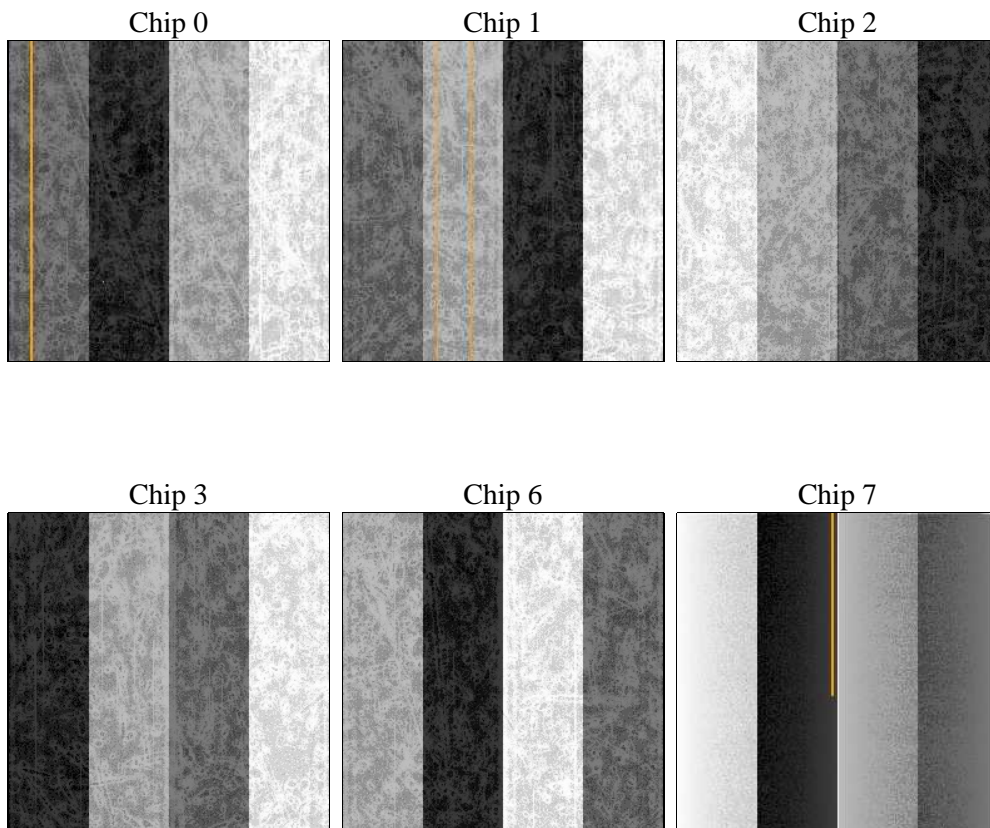
2 OBI

2.1 OBI

2.1.1 Images



2.1.2 Bias



2.1.3 Parameters

obi_num	0	Obi number	sched_exp_time	0.0	[s] Scheduled observation exposure time
ascdsver	8.4.4	Processing system revision	ontime	8243.1999693513	Sum of GTIs [s]
caldsver	4.4.9	 	ontime0	6509.2704749107	Sum of GTIs [s]
date	2012-04-27T03:52:40	Date and time of file creation	ontime1	6655.1149594784	Sum of GTIs [s]
revision	2	Processing version of data	ontime2	6308.328866899	Sum of GTIs [s]
			ontime3	6425.0051069856	Sum of GTIs [s]
			ontime6	6901.4303615093	Sum of GTIs [s]
			ontime7	8243.1999693513	Sum of GTIs [s]
			l1events	1490542	Number of level 1 events

2.1.4 Events

	ccd 0	ccd 1	ccd 2	ccd 3	ccd 6	ccd 7		ccd 0	ccd 1	ccd 2	ccd 3	ccd 6	ccd 7
level 1 events	237790	251316	240255	243614	267963	249604	grade 0 events	50648	51325	50311	52219	54895	31273
rejected events	143332	153632	147731	148869	162628	90997		21%	20%	20%	21%	20%	12%
rejected %	60%	61%	61%	61%	60%	36%	grade 1 events	357	313	364	380	297	142
								0%	0%	0%	0%	0%	0%
							grade 2 events	17497	19037	16777	16884	20391	38905
								7%	7%	6%	6%	7%	15%
							grade 3 events	6222	6182	6140	6048	6424	14260
								2%	2%	2%	2%	2%	5%
							grade 4 events	6122	6196	6002	6296	6472	14131
								2%	2%	2%	2%	2%	5%
							grade 5 events	3102	3186	2831	3339	3489	10423
								1%	1%	1%	1%	1%	4%
							grade 6 events	13969	14944	13294	13298	17153	60038
								5%	5%	5%	5%	6%	24%
							grade 7 events	139873	150133	144536	145150	158842	80432
								58%	59%	60%	59%	59%	32%

2.2 Compared Parameters

Parameter	Planned	Actual	Parameter	Planned	Actual
Instrument	ACIS	ACIS	Obspar format version number	7	7
Detector	ACIS-012367	ACIS-012367	Obspar file type	PREDICTED	ACTUAL
Grating	NONE	NONE	Obspar update status	NONE	UPDATED
Data mode	FAINT	FAINT	On-chip summing requested	N	N
Observation mode	SECONDARY	SECONDARY	Subarray requested	NONE	NONE
[deg] Pointing RA	0	250.0373324882515	Alternating exposures requested	N	N
[deg] Pointing Dec	0	-43.0072079343119	[s] Primary exposure time	3.2	3.2
[deg] Pointing Roll	0.0	309.0892239110668			
[mm] SIM focus pos	-0.782348	-0.6828225247311905			
[mm] SIM defocus	0	0.8505141146731063			
[mm] SIM translation stage pos	-233.592463	250.466033080201			
[mm] SIM translation stage offset	0	-0.01005468664627074			
[s] Observation start time (MET)	299318205.43466	299318204.40965			
Observation start date	2007-06-27T07:56:45	2007-06-27T07:56:44			
[s] Observation end time (MET)	299340974.785751	299340973.76074			
Observation end date	2007-06-27T14:16:15	2007-06-27T14:16:13			
Read mode	TIMED	TIMED			

2.3 Star Slots

2.4 FID Slots

A Summary

A.1 Status

V&V Scientist	Joy Nichols
V&V Date (YYYY-MM-DD)	2012.04.27
V&V Edition	1
V&V Disposition and Status	OK
V&V Charge Time	8.2431999693513

A.2 Comments