

V&V Reference Report

L2 ASCDS Version : 8.5.1

Observation 5830 - L2 Version 3
Chandra X-Ray Center

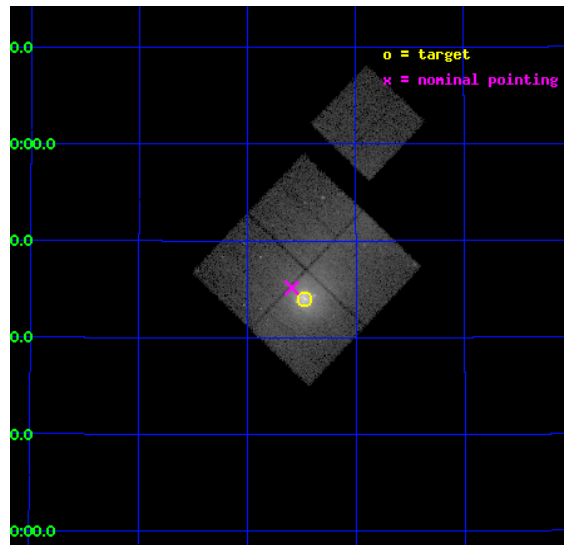
L2 Processing Date : Dec 18 2012

Contents

1	Front	2
2	OBI	3
2.1	OBI	3
2.1.1	Images	3
2.1.2	Bias	3
2.1.3	Parameters	4
2.1.4	Events	4
2.2	Compared Parameters	5
2.3	Aspect	6
2.4	Star Slots	9
2.4.1	Slot 3	9
2.4.2	Slot 4	10
2.4.3	Slot 5	11
2.4.4	Slot 6	12
2.4.5	Slot 7	13
2.5	FID Slots	14
2.5.1	Slot 0	14
2.5.2	Slot 1	15
2.5.3	Slot 2	16
A	Summary	17
A.1	Status	17
A.2	Comments	17

1 Front

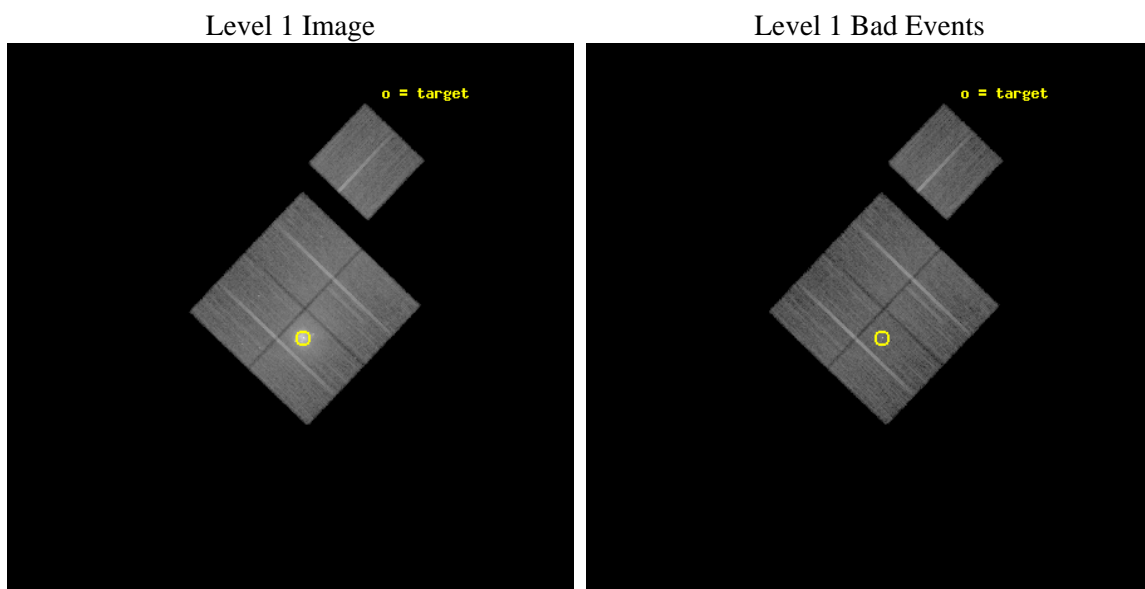
seq_num	800540	Sequence number
obs_id	5830	Observation id
title	Cygnus A --- Shock Heating of the Intra-Cluster Medium	Proposal ti
observer	Dr Andrew Young	Principal investigator
object	Cygnus A	Source name
dtcycle	0	
cycle	P	events from which exps? Prim/Second/Both
ra_targ	299.867917	Observer's specified target RA [deg]
dec_targ	40.733889	Observer's specified target Dec [deg]
ra_nom	299.89760437163	Nominal RA [deg]
dec_nom	40.752728889902	Nominal Dec [deg]
roll_nom	43.689307401799	Nominal Roll [deg]
revision	3	Processing version of data
ontime	23764.518003881	Sum of GTIs [s]
livetime	23454.017080977	Livetime [s]
ontime0	23761.377153128	Sum of GTIs [s]
ontime1	23764.518003881	Sum of GTIs [s]
ontime2	23770.799954265	Sum of GTIs [s]
ontime3	23770.799954265	Sum of GTIs [s]
ontime6	23770.799954265	Sum of GTIs [s]
l2events	217046	Number of level 2 events



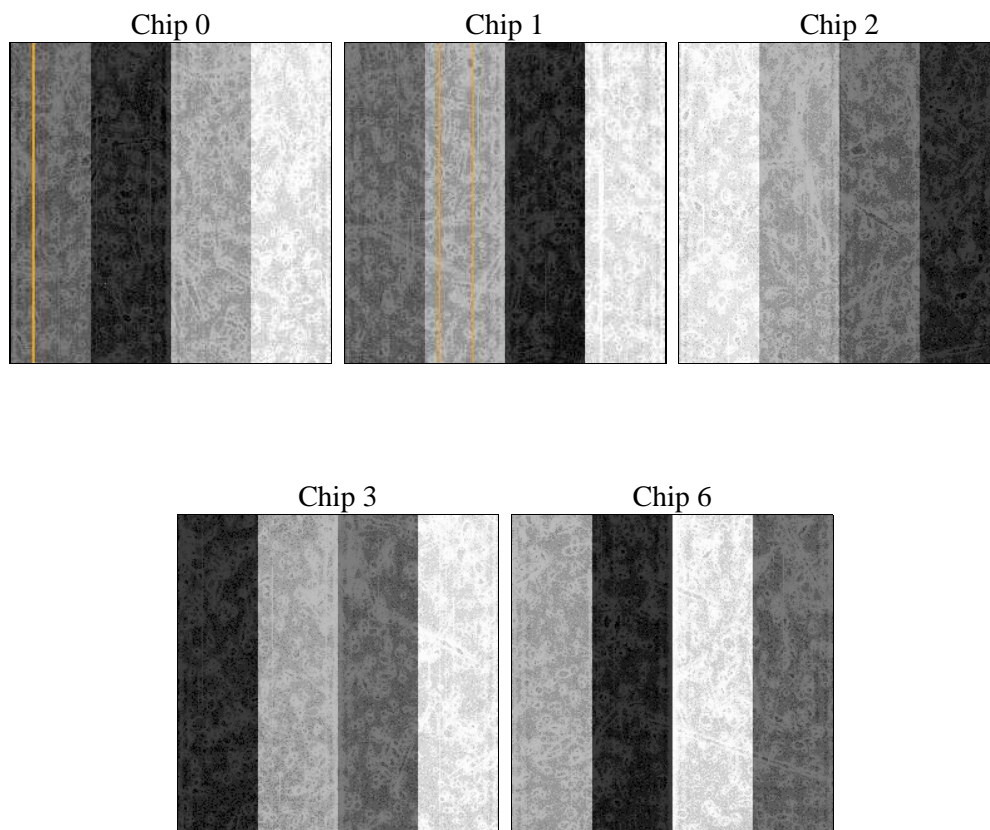
2 OBI

2.1 OBI

2.1.1 Images



2.1.2 Bias



2.1.3 Parameters

obi_num	0	Obi number	sched_exp_time	23592.773000	[s] Scheduled observation exposure time
ascdsver	8.5.1	Processing system revision	ontime	23764.518003881	Sum of GTIs [s]
caldsver	4.5.5	 	ontime0	23761.377153128	Sum of GTIs [s]
date	2012-12-17T18:03:29	Date and time of file creation	ontime1	23764.518003881	Sum of GTIs [s]
revision	3	Processing version of data	ontime2	23770.799954265	Sum of GTIs [s]
			ontime3	23770.799954265	Sum of GTIs [s]
			ontime6	23770.799954265	Sum of GTIs [s]
			l1events	879441	Number of level 1 events

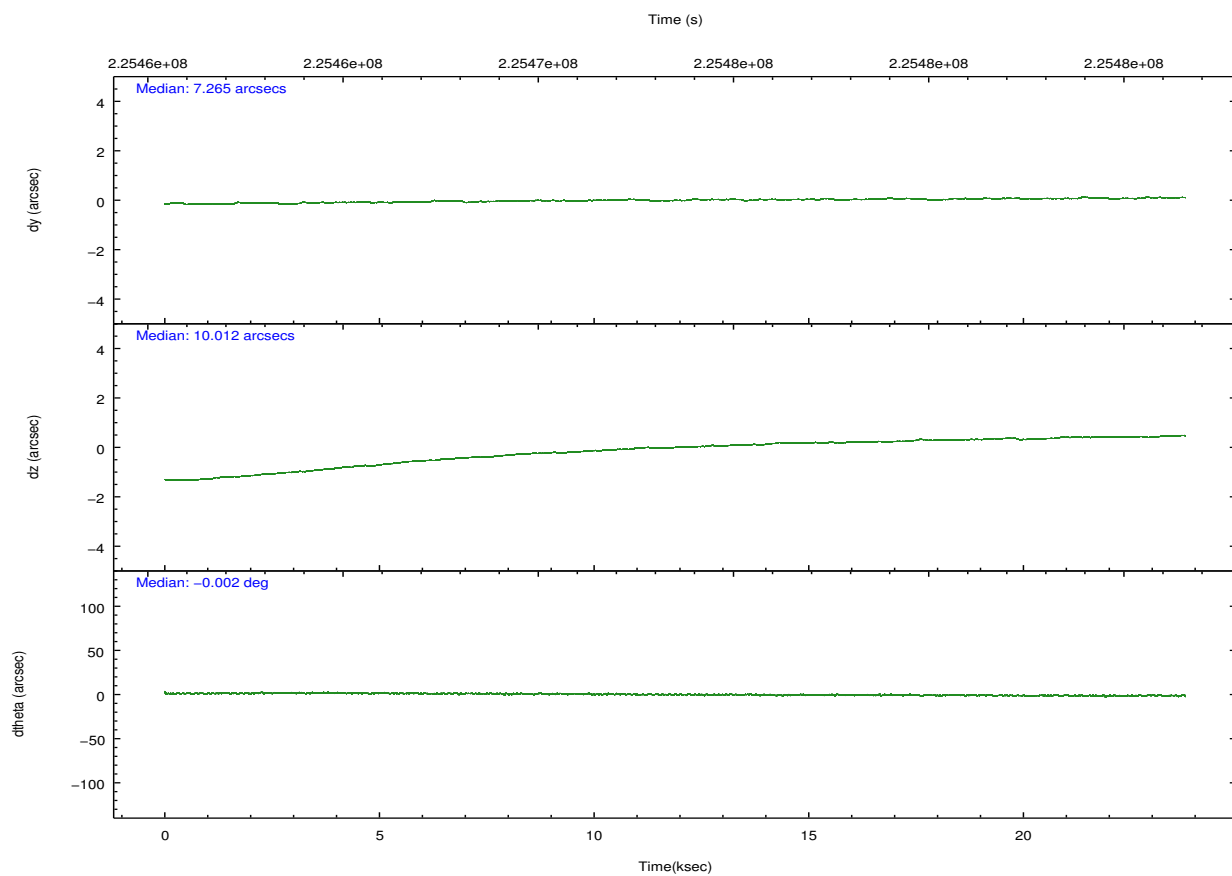
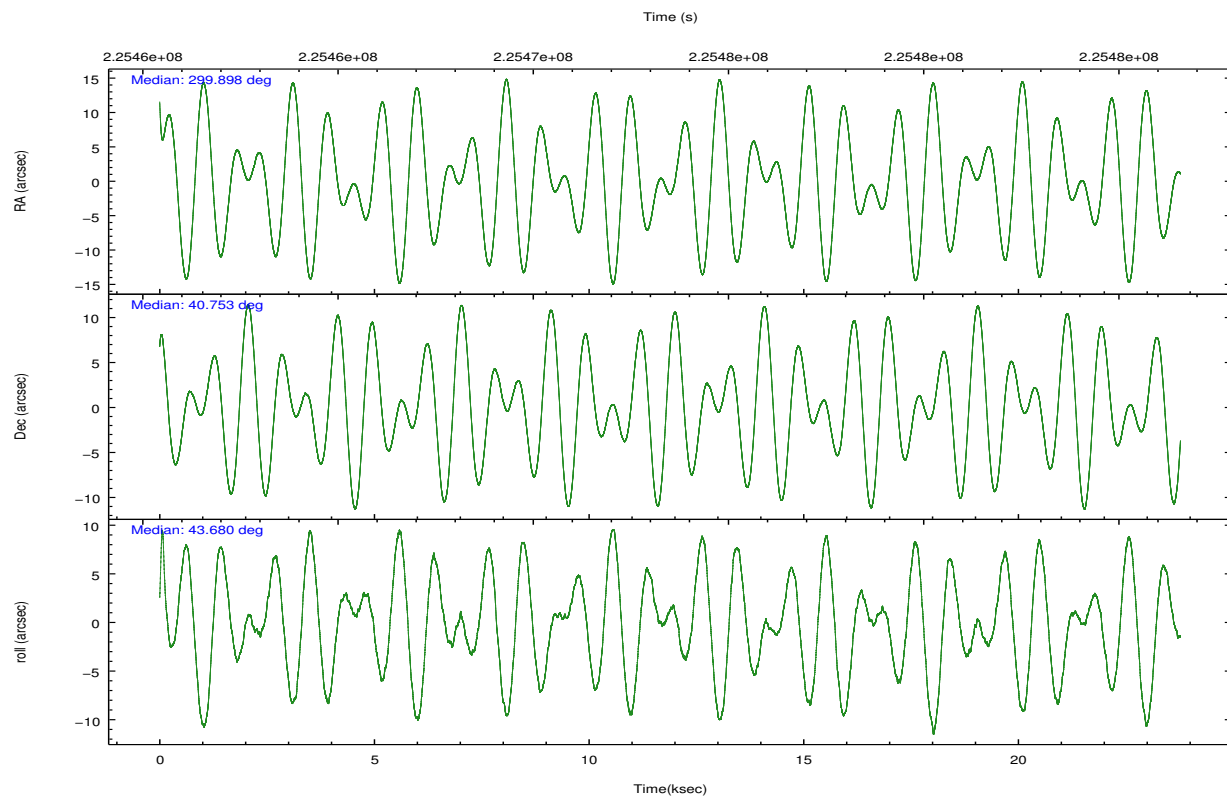
2.1.4 Events

	ccd 0	ccd 1	ccd 2	ccd 3	ccd 6		ccd 0	ccd 1	ccd 2	ccd 3	ccd 6
level 1 events	149901	248686	161472	170376	149006	grade 0 events	16604	90350	17529	24250	7329
rejected events	120768	124230	131870	132331	131446		11%	36%	10%	14%	4%
rejected %	80%	49%	81%	77%	88%	grade 1 events	110	800	146	191	78
							0%	0%	0%	0%	0%
						grade 2 events	5073	15800	4797	5548	3498
							3%	6%	2%	3%	2%
						grade 3 events	2143	5588	2167	2367	1785
							1%	2%	1%	1%	1%
						grade 4 events	2098	5643	2124	2390	1679
							1%	2%	1%	1%	1%
						grade 5 events	5130	6246	4920	5817	5726
							3%	2%	3%	3%	3%
						grade 6 events	3240	7210	3024	3547	3288
							2%	2%	1%	2%	2%
						grade 7 events	115503	117049	126765	126266	125623
							77%	47%	78%	74%	84%

2.2 Compared Parameters

Parameter	Planned	Actual	Parameter	Planned	Actual
Instrument	ACIS	ACIS	Obspar format version number	7	7
Detector	ACIS-01236	ACIS-01236	Obspar file type	PREDICTED	ACTUAL
Grating	NONE	NONE	Obspar update status	NONE	UPDATED
Data mode	VFAINT	VFAINT	Number of optional ACIS chips dropped	0	0
Observation mode	POINTING	POINTING	On-chip summing requested	N	N
[deg] Pointing RA	299.887572	299.8976043716273	Subarray requested	NONE	NONE
[deg] Pointing Dec	40.726424	40.75272888990218	Alternating exposures requested	N	N
[deg] Pointing Roll	43.487167	43.68930740179853	[s] Primary exposure time	0.000000	3.1
[mm] SIM focus pos	-0.782348	-0.7809083437167272			
[mm] SIM defocus	0	0.001439871863259334			
[mm] SIM translation stage pos	-242.392463	-242.3975952774949			
[mm] SIM translation stage offset	8.800000000000001	8.805142274565242			
[s] Observation start time (MET)	225461797.184000	225460794.30438			
Observation start date	2005-02-22T12:15:33	2005-02-22T11:59:54			
[s] Observation end time (MET)	225485390.184000	225485634.66801			
Observation end date	2005-02-22T18:48:46	2005-02-22T18:53:54			
Read mode	TIMED	TIMED			

2.3 Aspect

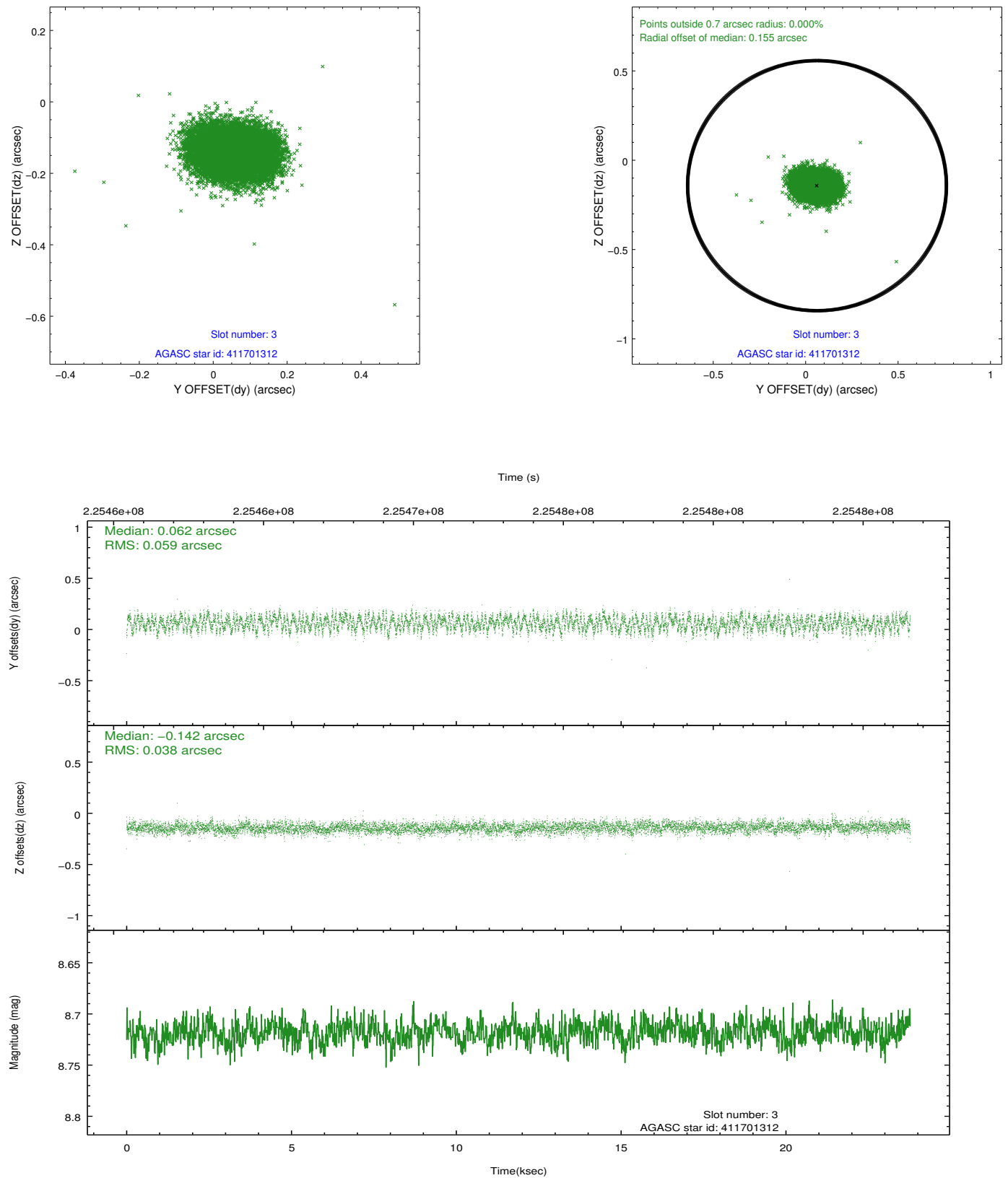


Slot Statistics

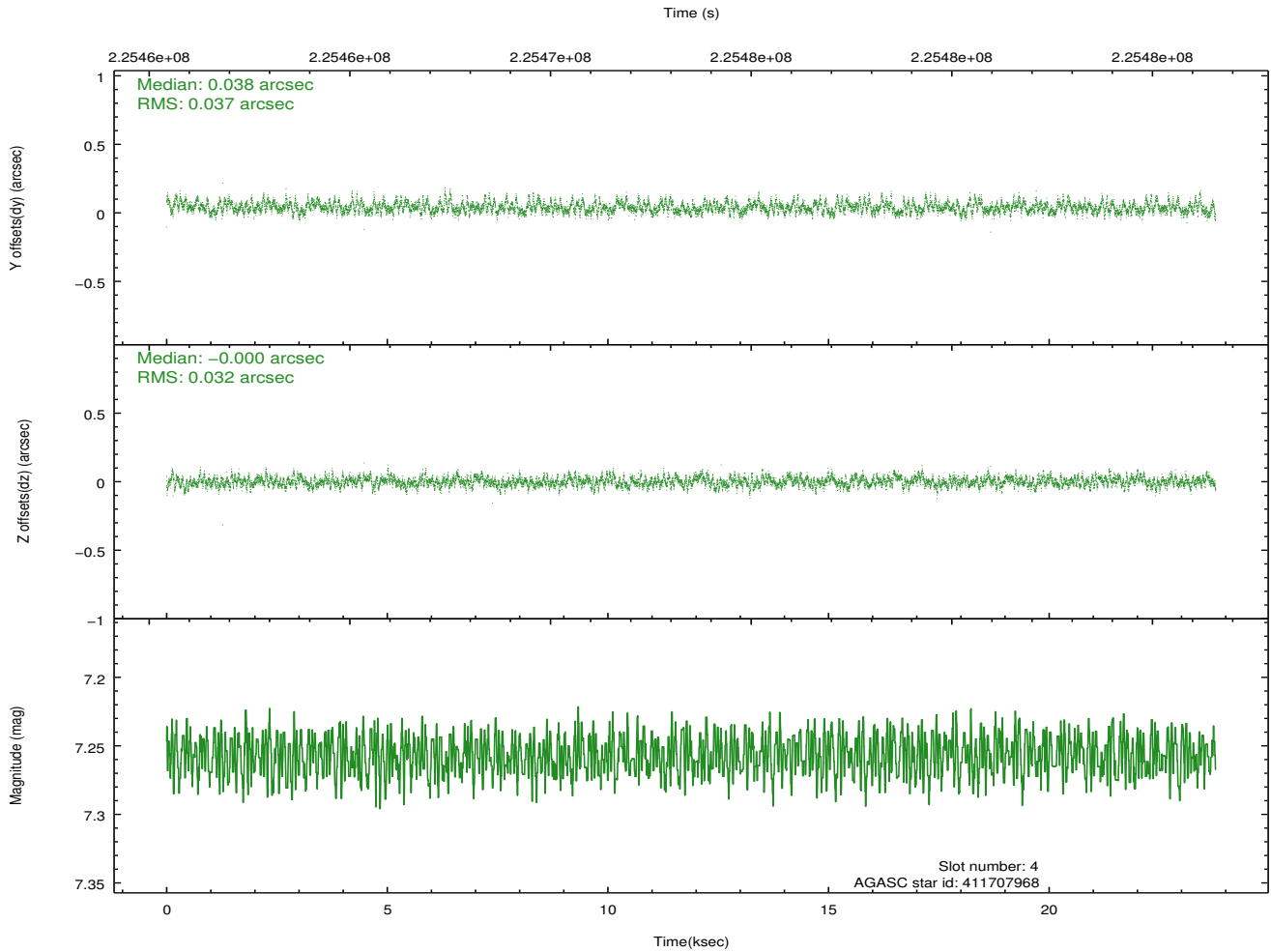
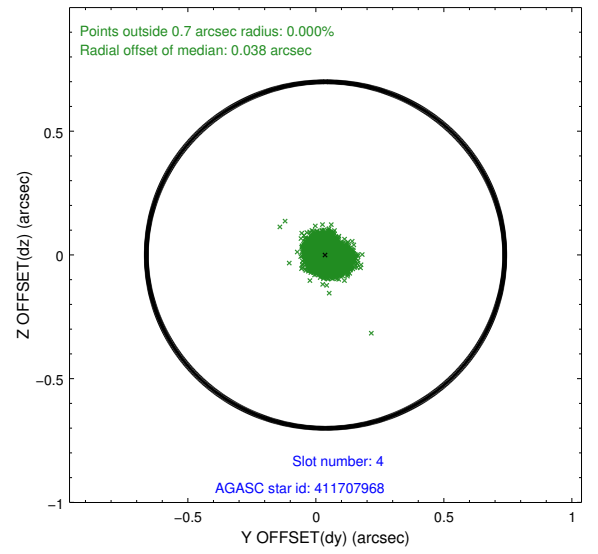
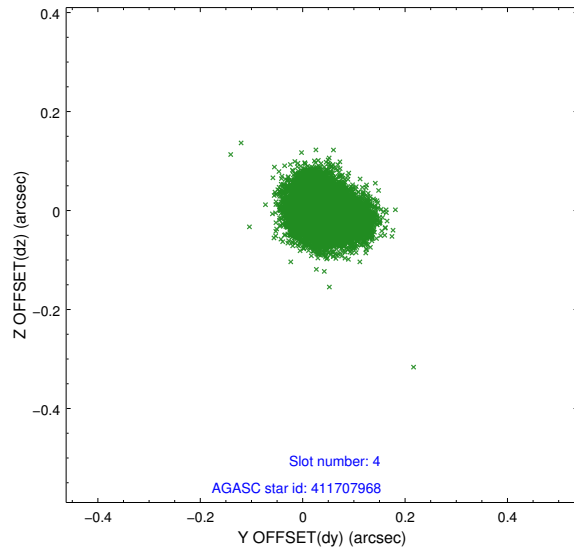
slot	status	id	mag	n_pts	med_dy	med_dz	dr1	dr2	ra	dec	mean_y	mean_z
0	FID	ACIS-I-1	7.28	5800	-0.032	0.087	0.027	0.051	0.000000	0.000000	932.54	-652.25
1	FID	ACIS-I-5	7.24	5799	-0.103	0.016	0.008	0.014	0.000000	0.000000	-1815.55	1245.16
2	FID	ACIS-I-6	7.24	5800	0.044	-0.035	0.024	0.056	0.000000	0.000000	398.04	1889.74
3	GUIDE	411701312	8.72	11594	0.062	-0.142	0.075	0.120	298.889956	40.820220	-1728.81	2126.36
4	GUIDE	411707968	7.26	11600	0.038	-0.000	0.052	0.083	299.509933	40.926839	-247.13	1232.28
5	GUIDE	413405352	8.35	11599	0.027	-0.201	0.061	0.097	300.290830	41.091941	1701.35	203.86
6	GUIDE	413418680	9.30	11596	0.042	0.240	0.094	0.156	300.860298	40.740057	1969.34	-1778.98
7	GUIDE	413421016	8.71	11598	-0.165	0.103	0.068	0.109	300.612426	40.446254	752.86	-2092.28

2.4 Star Slots

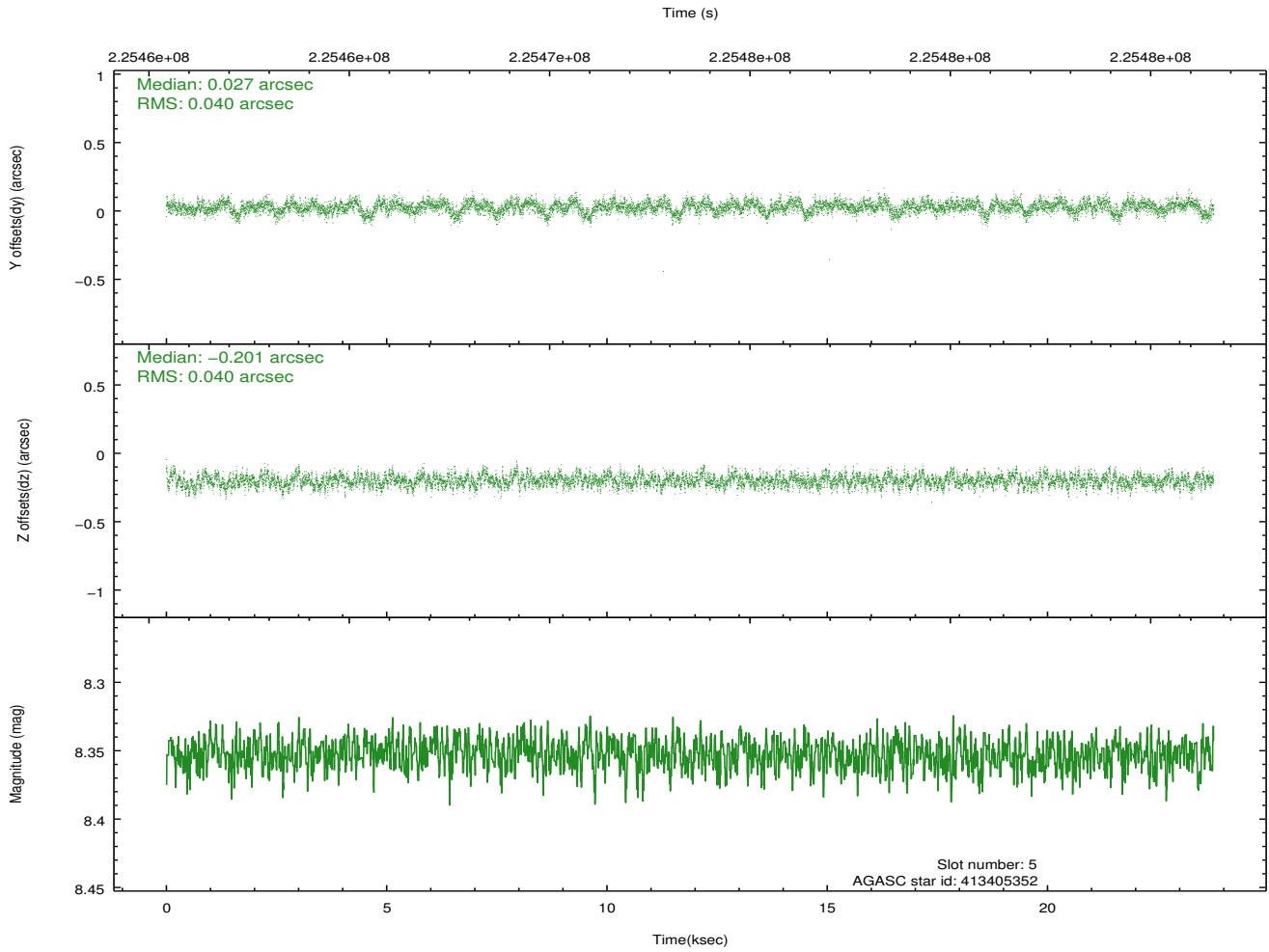
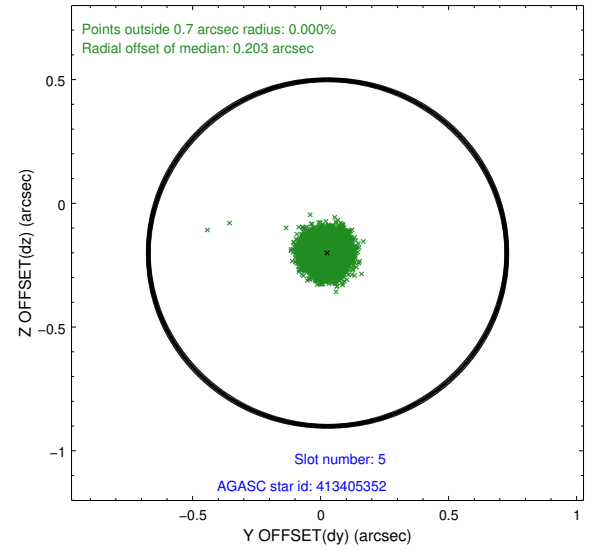
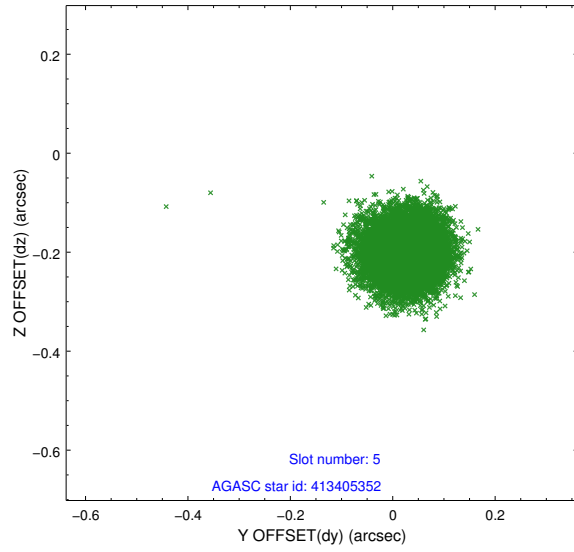
2.4.1 Slot 3



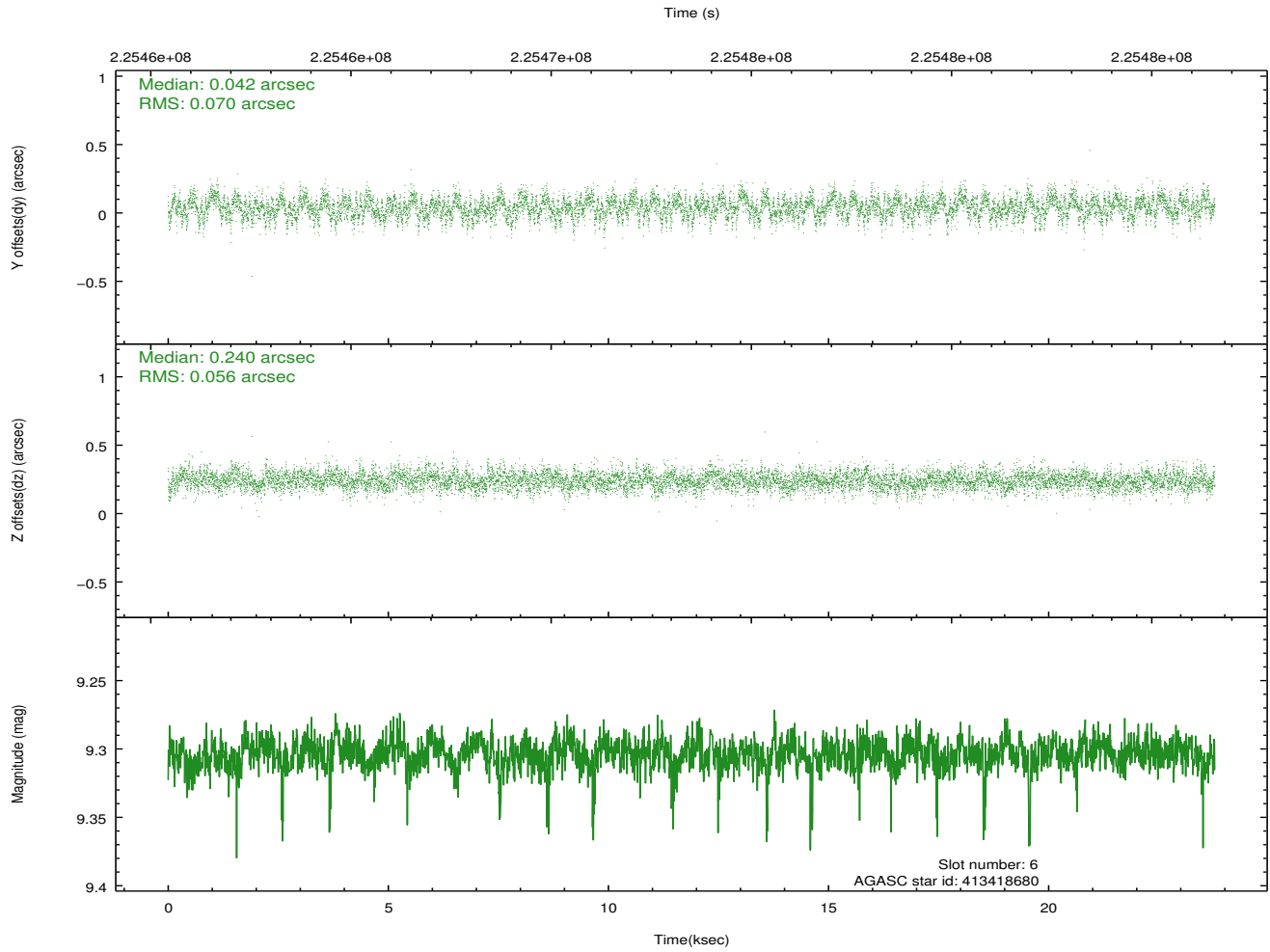
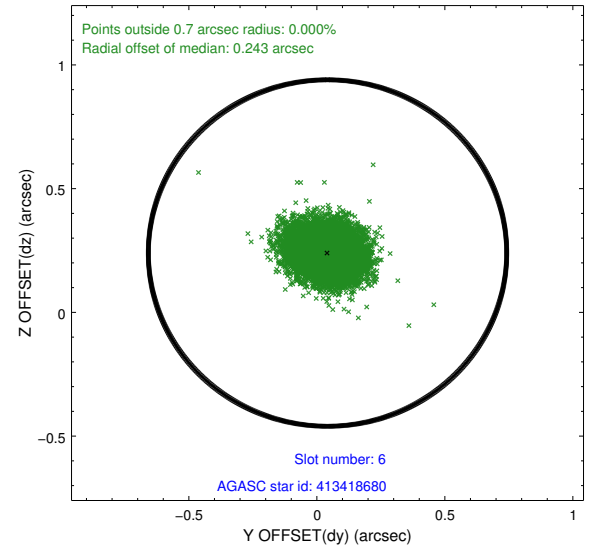
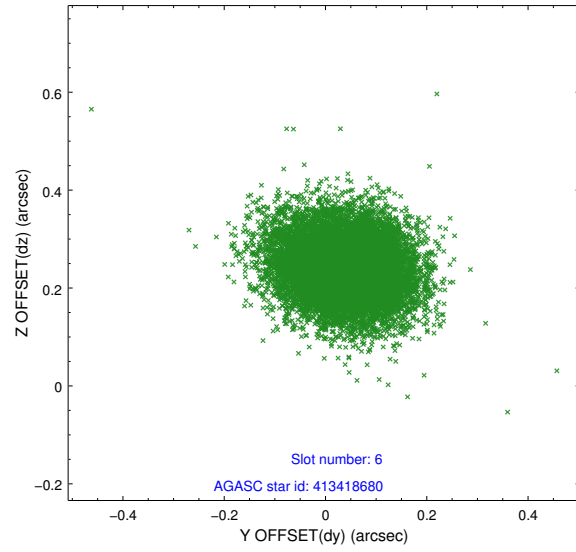
2.4.2 Slot 4



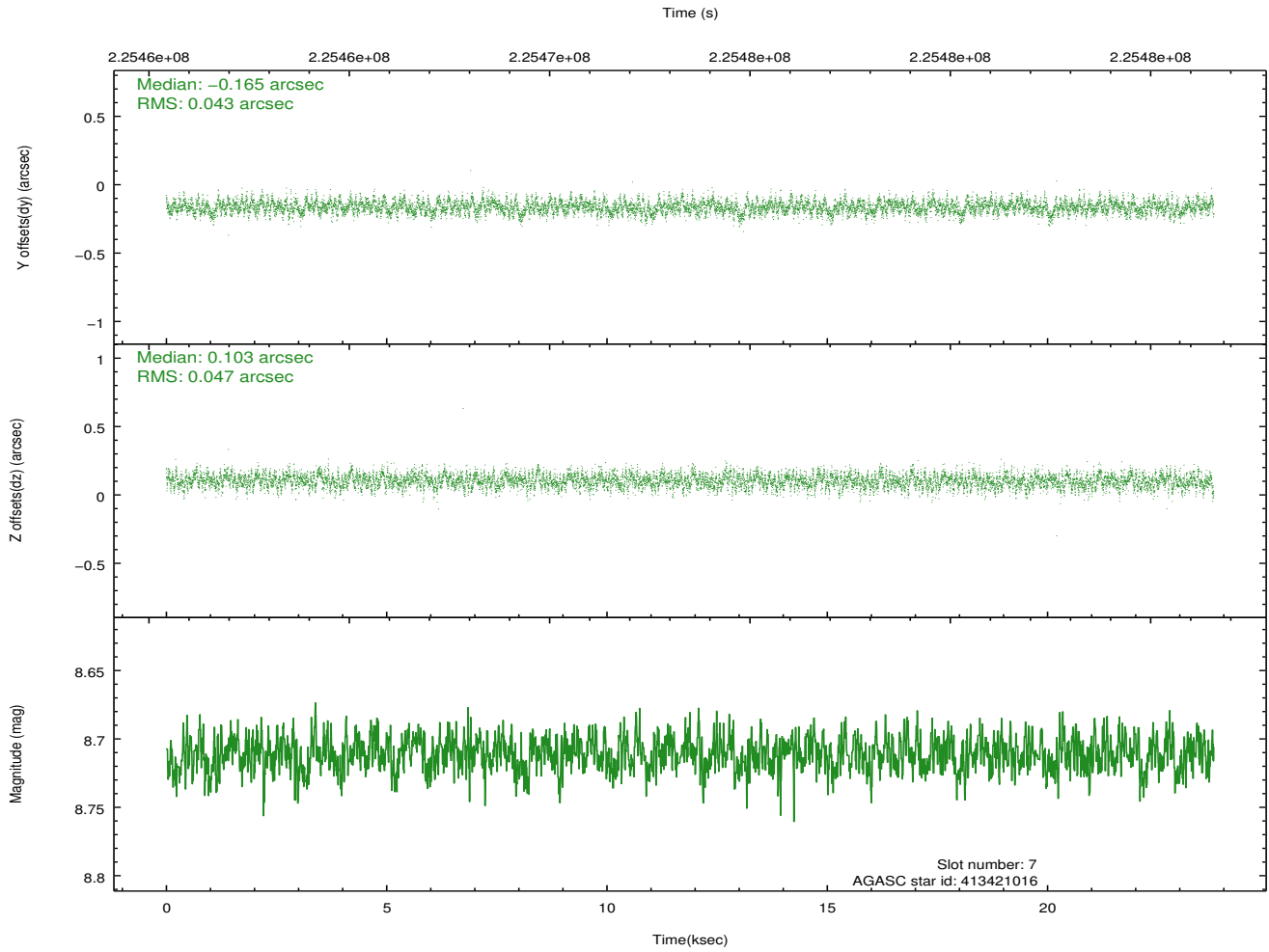
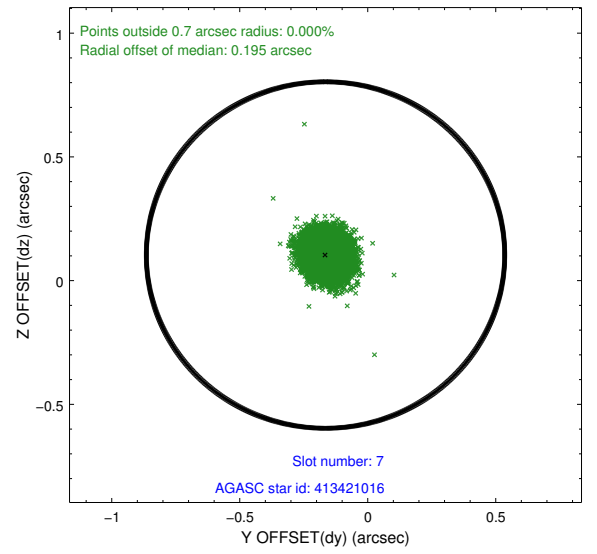
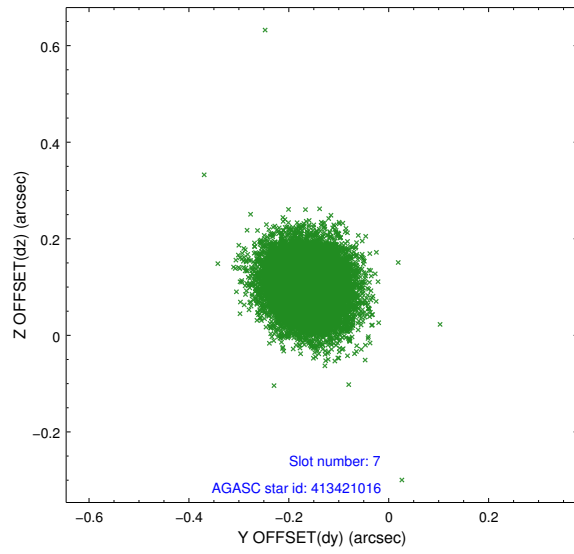
2.4.3 Slot 5



2.4.4 Slot 6

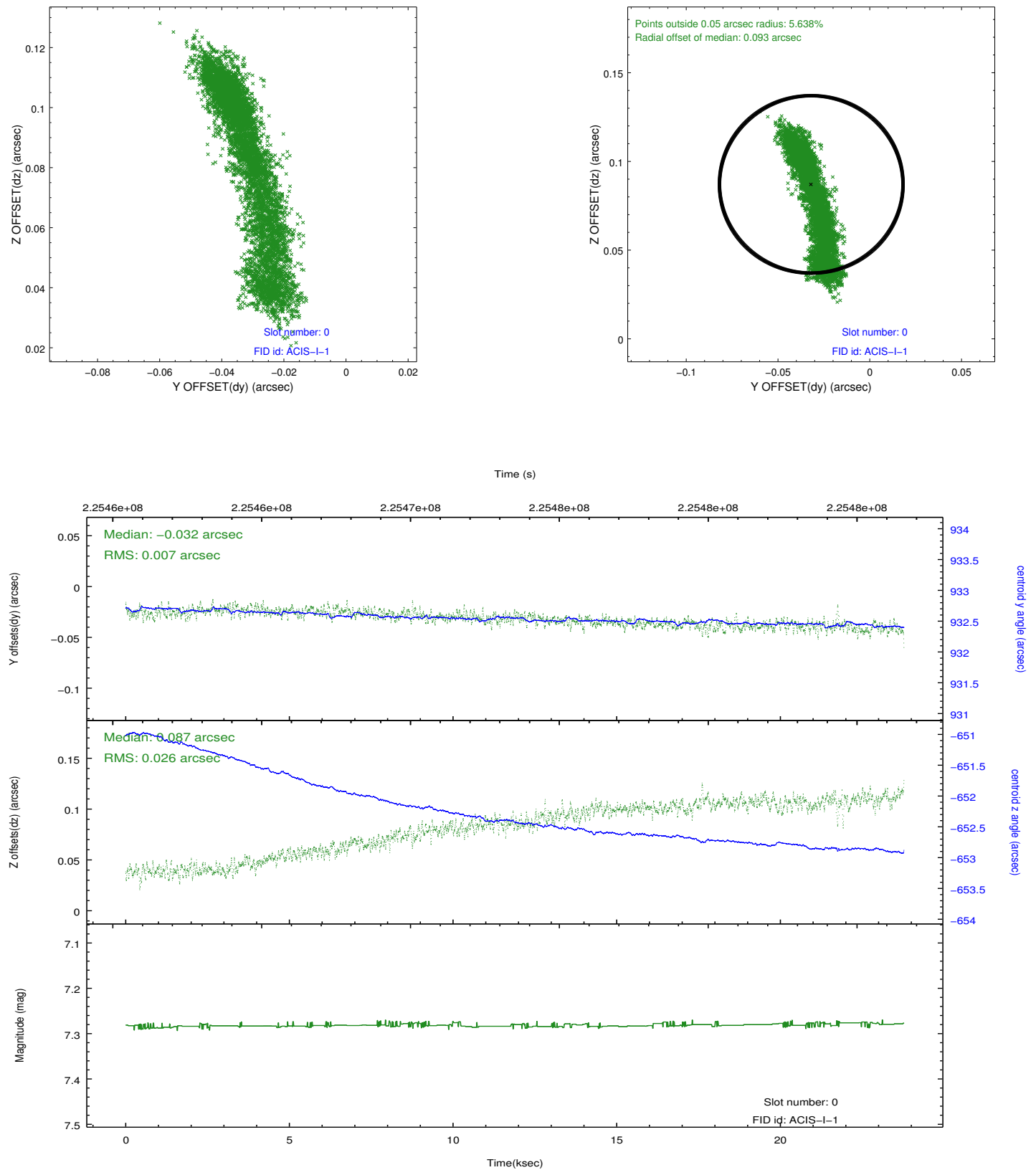


2.4.5 Slot 7

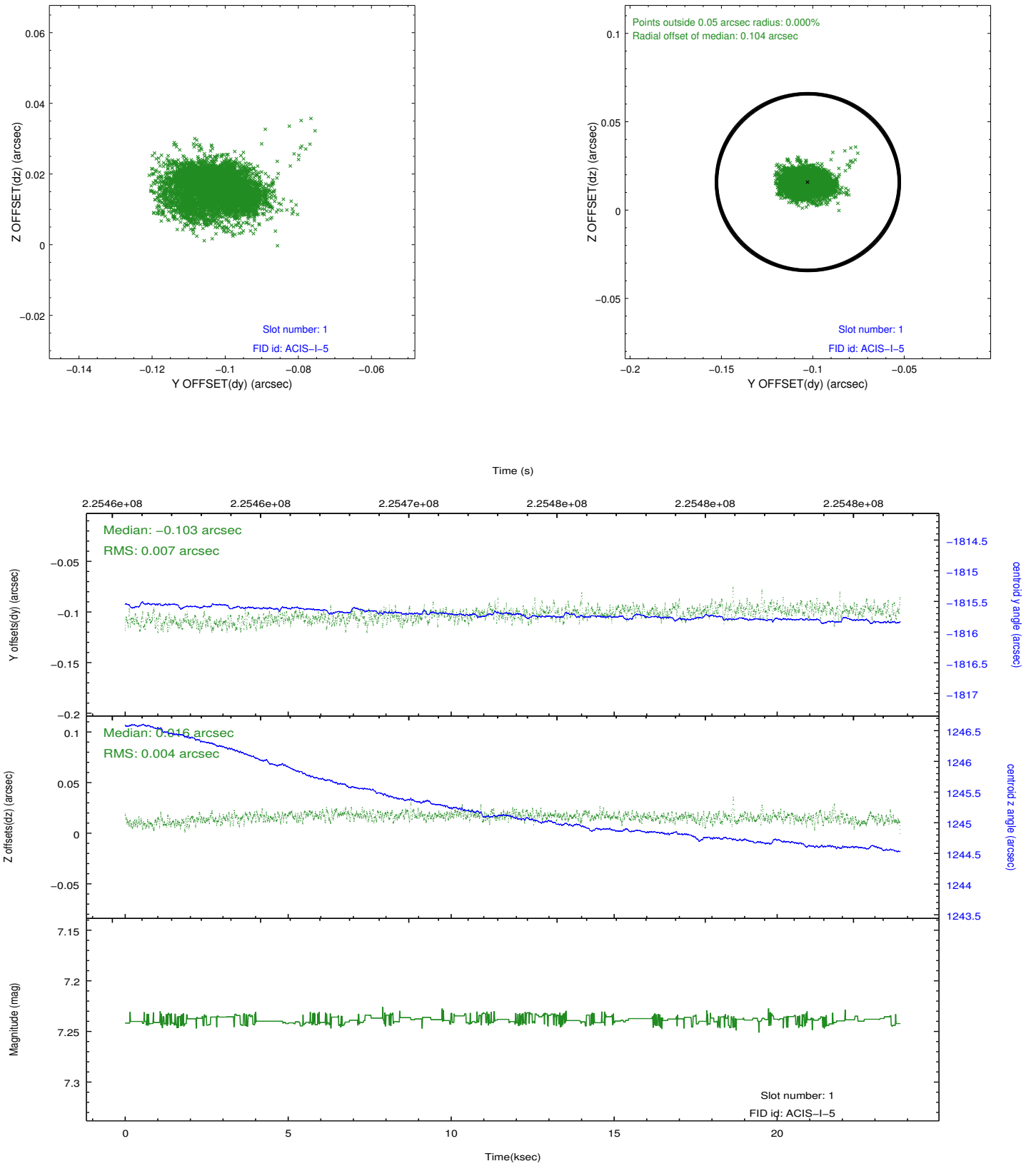


2.5 FID Slots

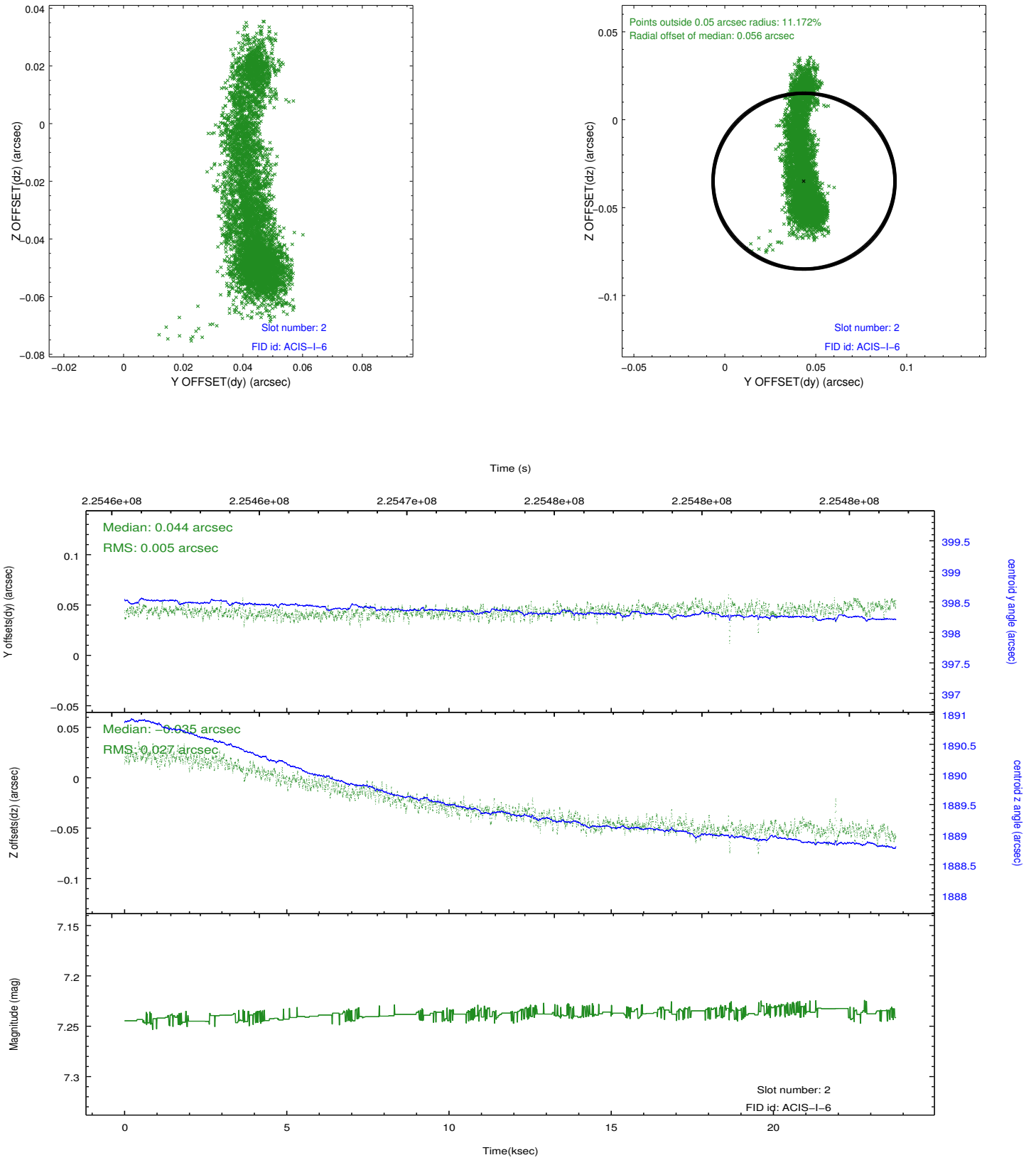
2.5.1 Slot 0



2.5.2 Slot 1



2.5.3 Slot 2



A Summary

A.1 Status

V&V Scientist	Jen Lauer
V&V Date (YYYY-MM-DD)	2013.01.11
V&V Edition	1
V&V Disposition and Status	OK
V&V Charge Time	23.76451

A.2 Comments