

# V&V Reference Report

## L2 ASCDS Version : 7.6.7

Observation 5820 - L2 Version 002  
Chandra X-Ray Center

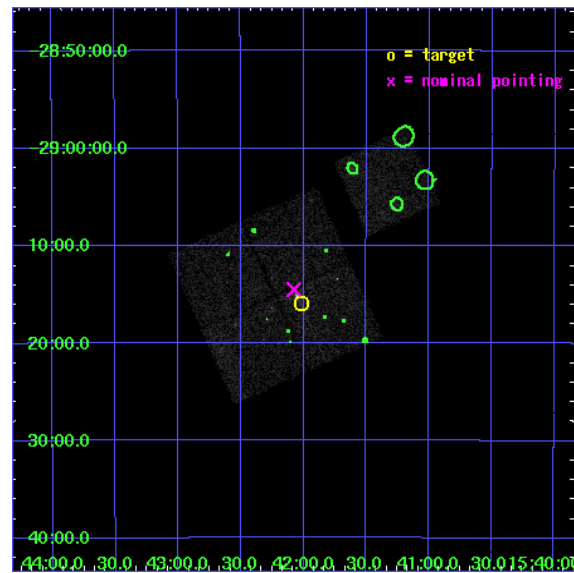
L2 Processing Date: Feb 28 2006

## Contents

<b>1</b>	<b>Front</b>	<b>2</b>
<b>2</b>	<b>OBI</b>	<b>3</b>
2.1	OBI . . . . .	3
2.1.1	Images . . . . .	3
2.1.2	Bias . . . . .	3
2.1.3	Parameters . . . . .	4
2.1.4	Events . . . . .	4
2.2	Compared Parameters . . . . .	5
2.3	Aspect . . . . .	6
2.4	Star Slots . . . . .	9
2.4.1	Slot 3 . . . . .	9
2.4.2	Slot 4 . . . . .	10
2.4.3	Slot 5 . . . . .	11
2.4.4	Slot 6 . . . . .	12
2.4.5	Slot 7 . . . . .	13
2.5	FID Slots . . . . .	14
2.5.1	Slot 0 . . . . .	14
2.5.2	Slot 1 . . . . .	15
2.5.3	Slot 2 . . . . .	16
<b>3</b>	<b>Point Sources</b>	<b>17</b>
<b>A</b>	<b>Summary</b>	<b>18</b>
A.1	Status . . . . .	18
A.2	Comments . . . . .	18

# 1 Front

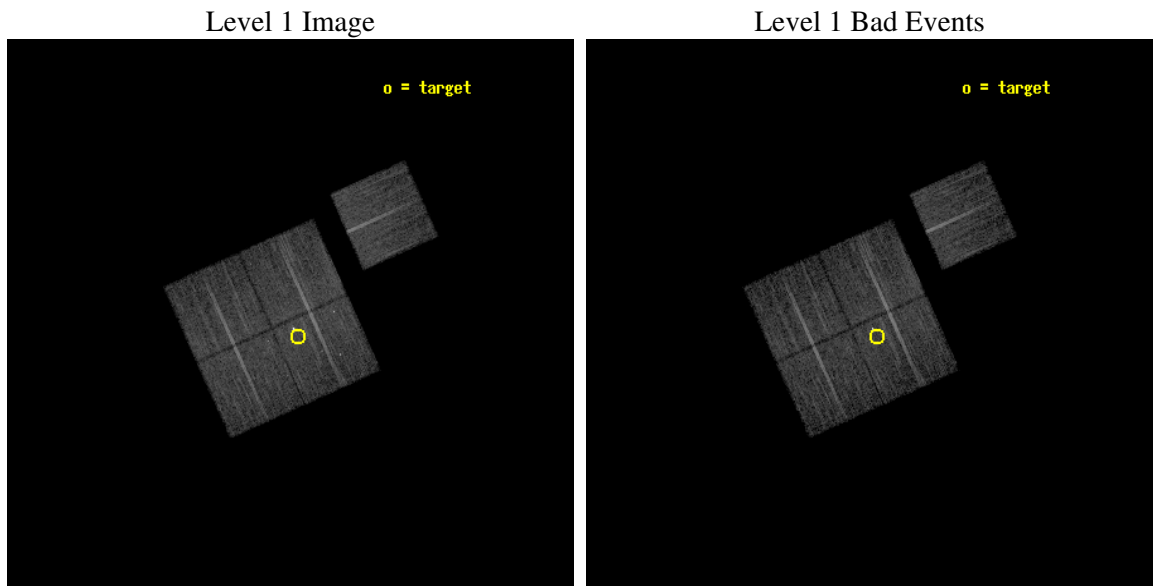
seq_num	800533
obs_id	5820
title	MACS: The most massive galaxy clusters at $z>0.3$
observer	Dr. Harald Ebeling
object	MACSJ1542.0-2915
dtcycle	0
cycle	P
ra_targ	235.504083
dec_targ	-29.266
ra_nom	235.51902404529
dec_nom	-29.241587476374
roll_nom	65.842593383564
revision	2
ontime	10127.699980527
livetime	9995.3741243773
ontime0	10127.699980527
ontime1	10124.559010267
ontime2	10127.699980527
ontime3	10127.699980527
ontime6	10124.559020281
l2events	33684



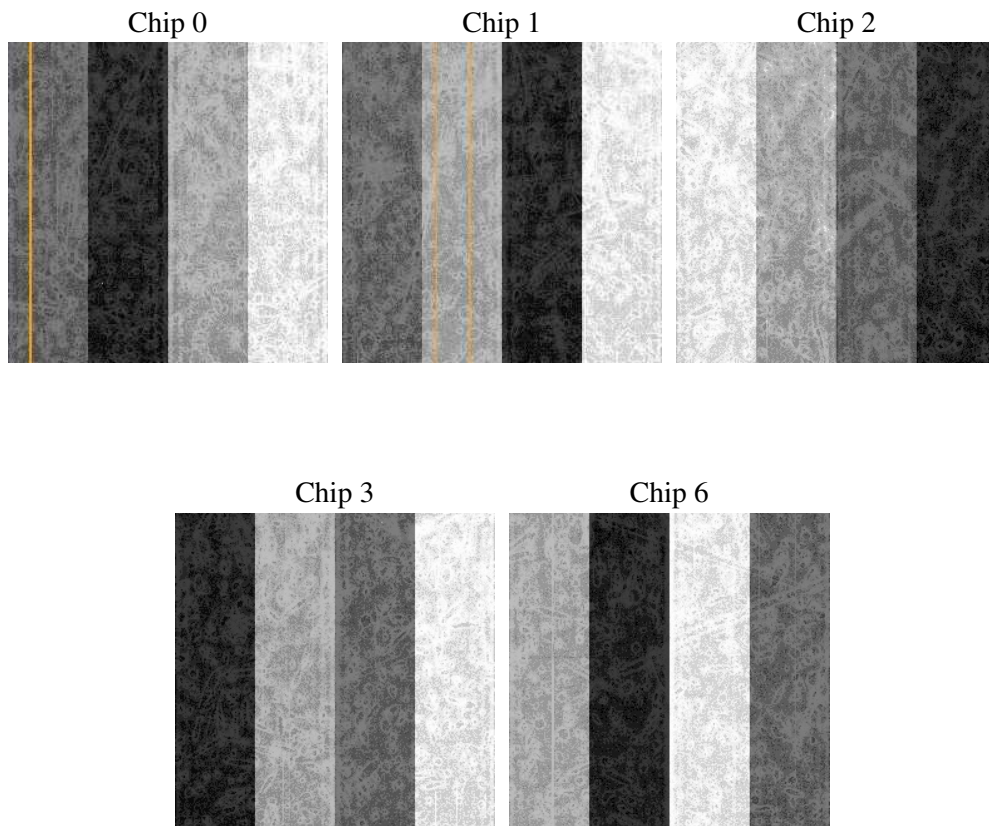
## 2 OBI

### 2.1 OBI

#### 2.1.1 Images



#### 2.1.2 Bias



### 2.1.3 Parameters

obi_num	1
ascdsver	7.6.7
caldsver	3.2.1
date	2006-02-28T17:02:04
revision	2

sched_exp_time	10000.000000
ontime	10490.957776964
ontime0	10490.957776964
ontime1	10487.816786796
ontime2	10490.957757056
ontime3	10490.957776964
ontime6	10487.816816717
l1events	341638

### 2.1.4 Events

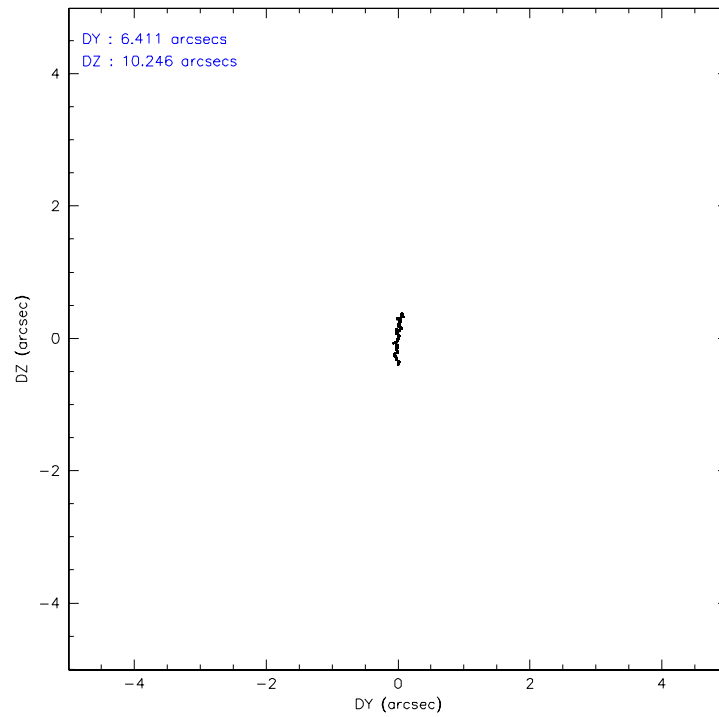
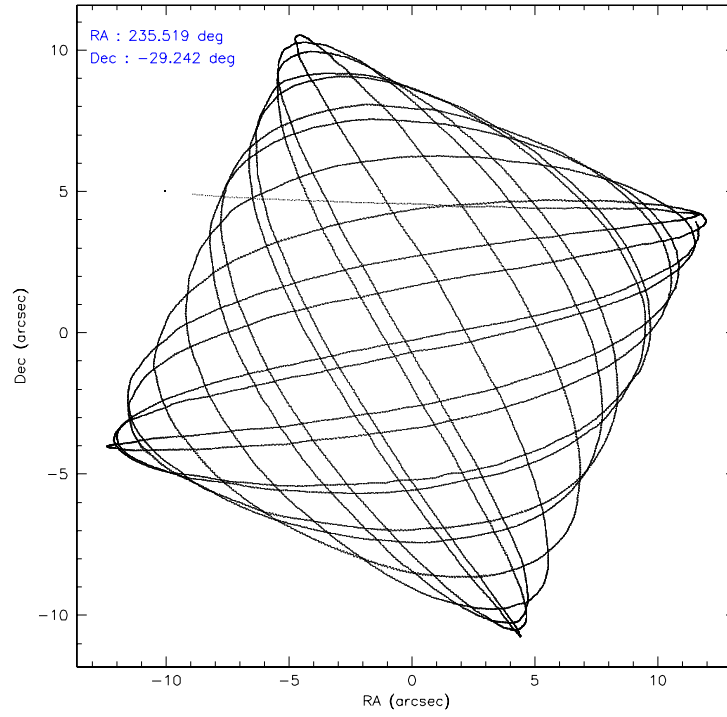
	ccd 0	ccd 1	ccd 2	ccd 3	ccd 6
level 1 events	64487	64187	71232	74729	67003
rejected events	57765	56319	64543	63941	59934
rejected %	89%	87%	90%	85%	89%

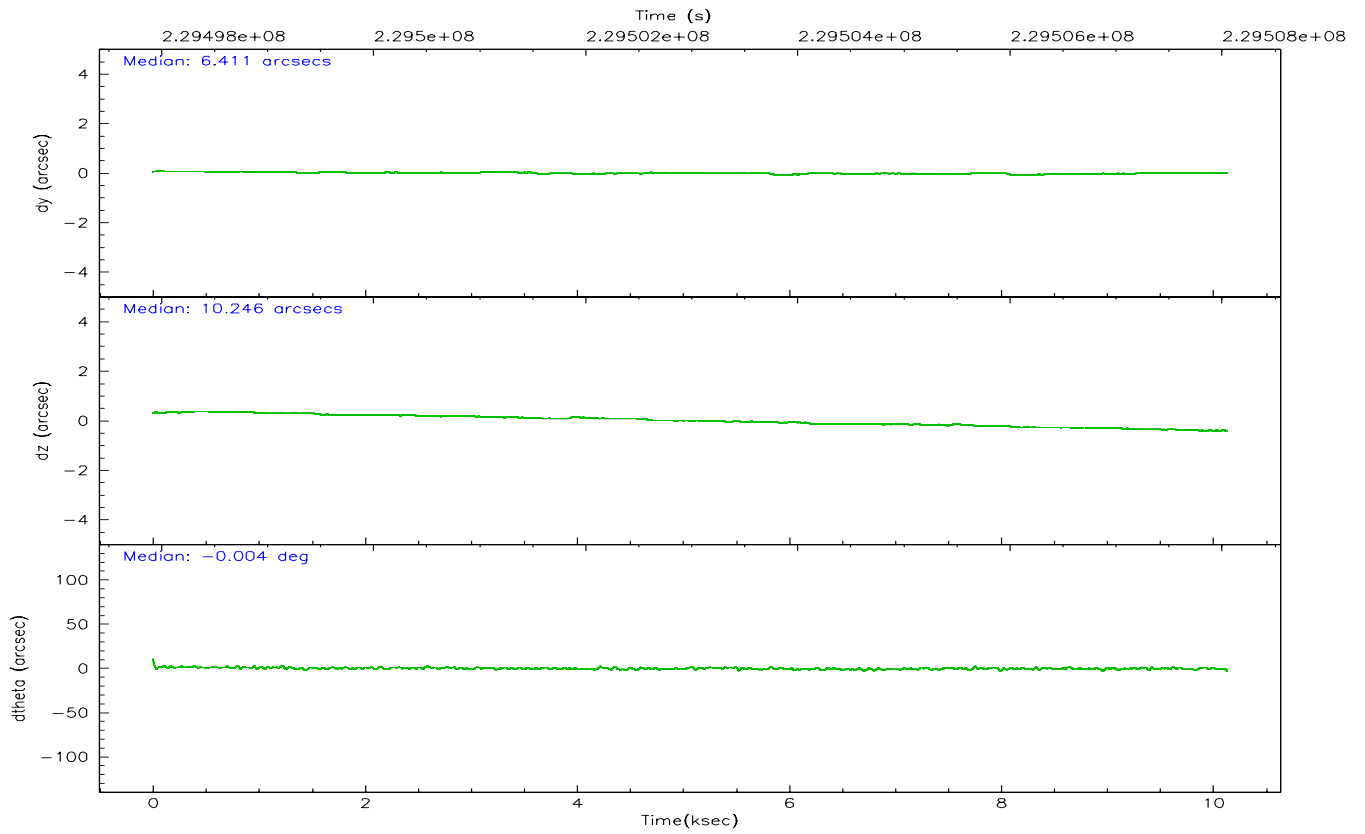
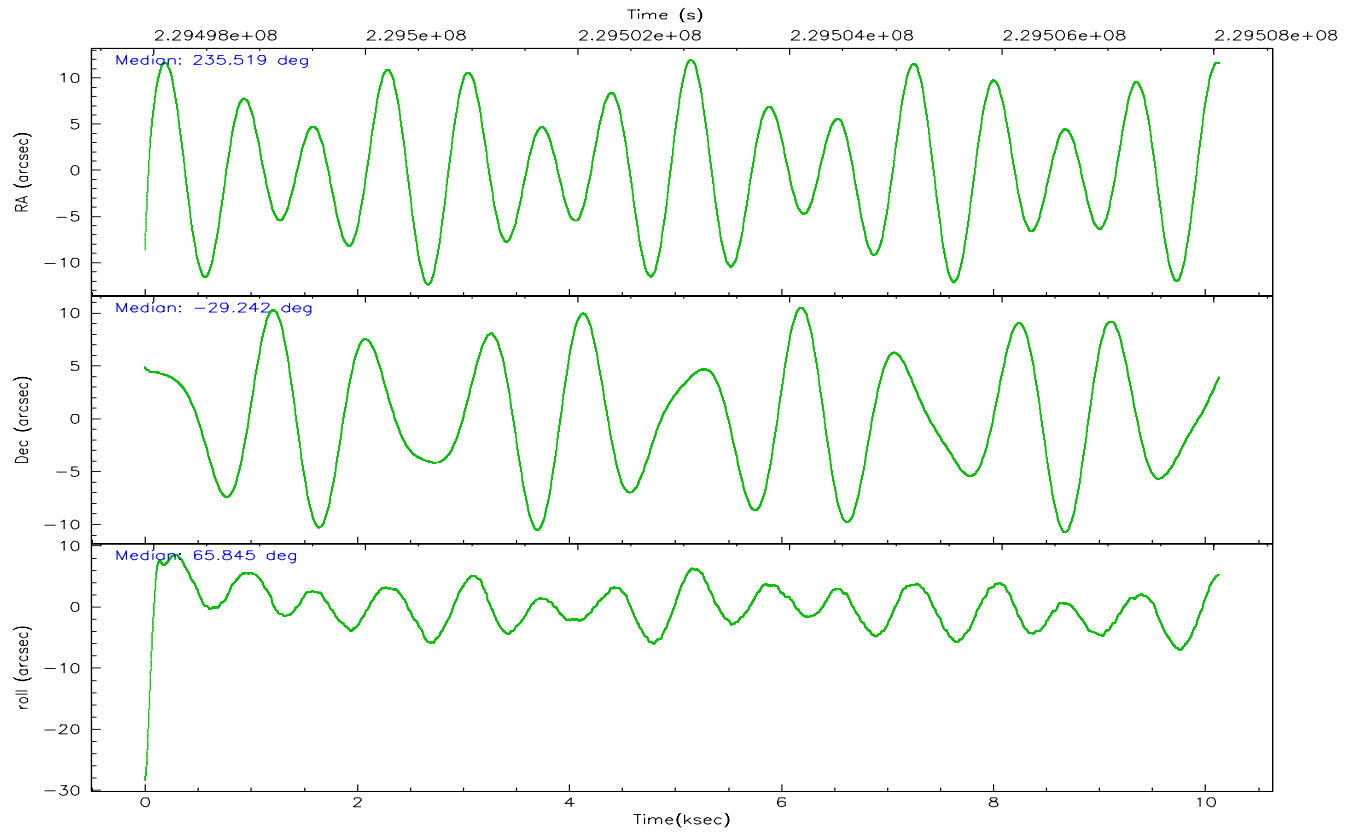
	ccd 0	ccd 1	ccd 2	ccd 3	ccd 6
grade 0 events	2518	3353	2835	5216	2872
	3%	5%	3%	6%	4%
grade 1 events	31	33	28	523	32
	0%	0%	0%	0%	0%
grade 2 events	1658	1652	1475	1994	1478
	2%	2%	2%	2%	2%
grade 3 events	797	830	693	1032	782
	1%	1%	0%	1%	1%
grade 4 events	699	836	751	992	736
	1%	1%	1%	1%	1%
grade 5 events	2348	2627	2266	3330	2615
	3%	4%	3%	4%	3%
grade 6 events	1298	1455	1150	1917	1456
	2%	2%	1%	2%	2%
grade 7 events	55138	53401	62034	59725	57032
	85%	83%	87%	79%	85%

## 2.2 Compared Parameters

Parameter	Planned	Actual	Parameter	Planned	Actual
Instrument	ACIS	ACIS	Obspar format version number	6	6
Detector	ACIS-01236	ACIS-01236	Obspar file type	PREDICTED	ACTUAL
Grating	NONE	NONE	Obspar update status	NONE	UPDATED
Data mode	VFAINT	VFAINT	On-chip summing requested	N	N
Observation mode	POINTING	POINTING	Subarray requested	NONE	NONE
Pointing RA	235.522336	235.5190240452947	Alternating exposures requested	N	N
Pointing Dec	-29.268822	-29.24158747637403	Primary exposure time	0.000000	3.1
Pointing Roll	65.635564	65.84259338356443			
SIM focus pos (mm)	-0.782348	-0.7809083437167272			
SIM defocus (mm)	0	0.001439871863259334			
SIM translation stage pos (mm)	-229.442463	-229.4438428438578			
SIM translation stage offset (mm)	-4.15	-4.148610159071865			
Observation start time	229498049.184000	229496902.64995			
Observation start date	2005-04-10T05:26:25	2005-04-10T05:08:22			
Observation end time	229508049.184000	229508831.60049			
Observation end date	2005-04-10T08:13:05	2005-04-10T08:27:11			
Read mode	TIMED	TIMED			

## 2.3 Aspect





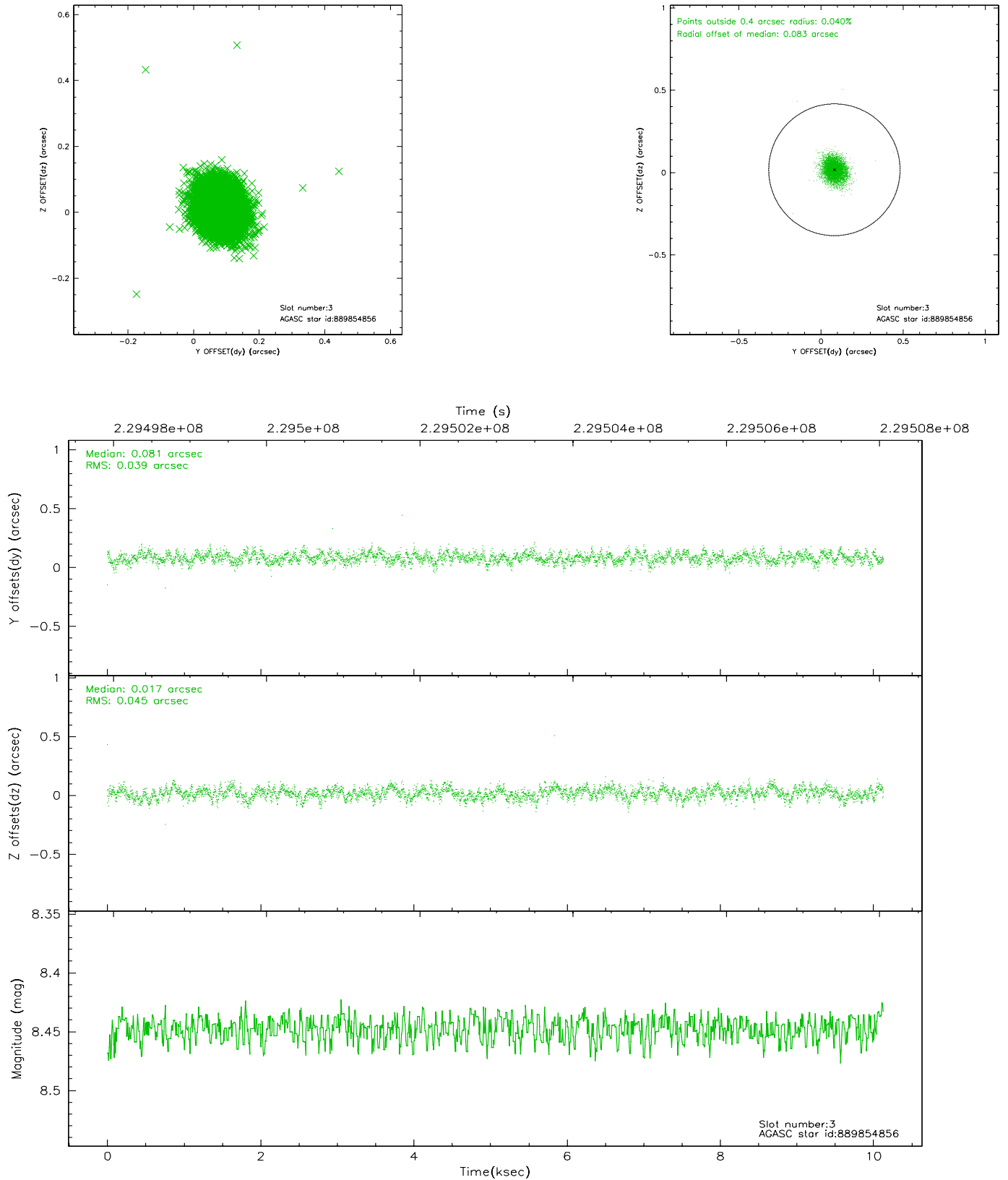
### Slot Statistics

slot	status	id	mag	n_pts	med_dy	med_dz	dr1	dr2	ra	dec	mean_y	mean_z
0	FID	ACIS-I-1	7.25	2472	-0.013	-0.034	0.015	0.025	0.000000	0.000000	933.24	-918.84
1	FID	ACIS-I-2	7.16	2472	-0.109	0.006	0.008	0.013	0.000000	0.000000	-760.88	-925.05
2	FID	ACIS-I-4	7.15	2472	0.024	0.095	0.009	0.014	0.000000	0.000000	2152.61	981.37
3	GUIDE	889854856	8.45	4944	0.081	0.017	0.062	0.100	235.149556	-29.324698	-667.74	982.22
4	GUIDE	889855320	9.28	4939	0.101	-0.039	0.089	0.142	235.175576	-29.648595	-1694.70	423.94
5	GUIDE	889857064	8.57	4944	-0.090	0.034	0.069	0.113	235.145891	-29.077300	137.13	1362.77
6	GUIDE	889858448	9.50	4940	-0.219	-0.051	0.108	0.170	235.209214	-28.619746	1718.86	1865.11
7	GUIDE	889860280	8.40	4943	0.128	0.043	0.082	0.139	234.589463	-29.596256	-2289.07	2169.79

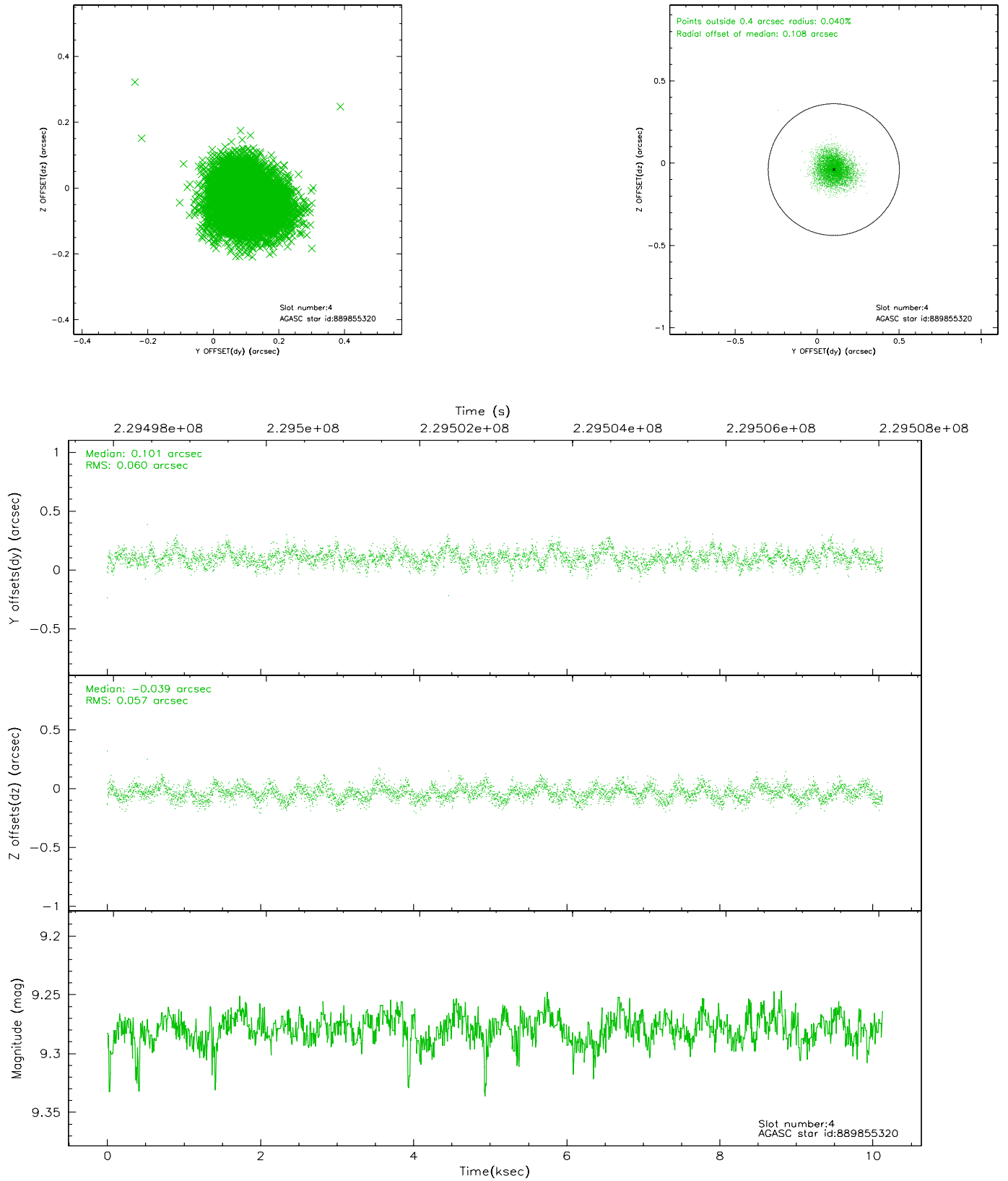


## 2.4 Star Slots

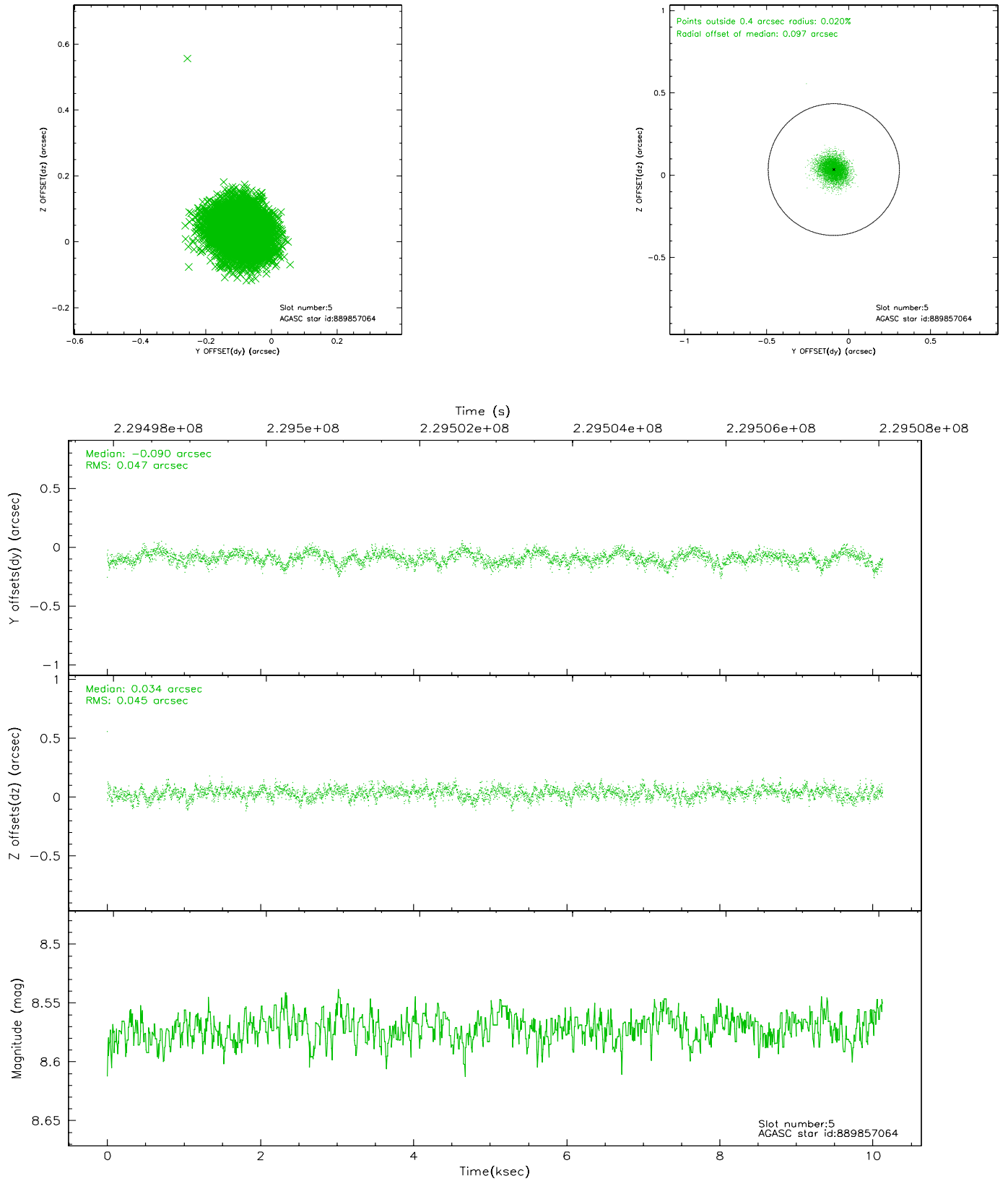
### 2.4.1 Slot 3



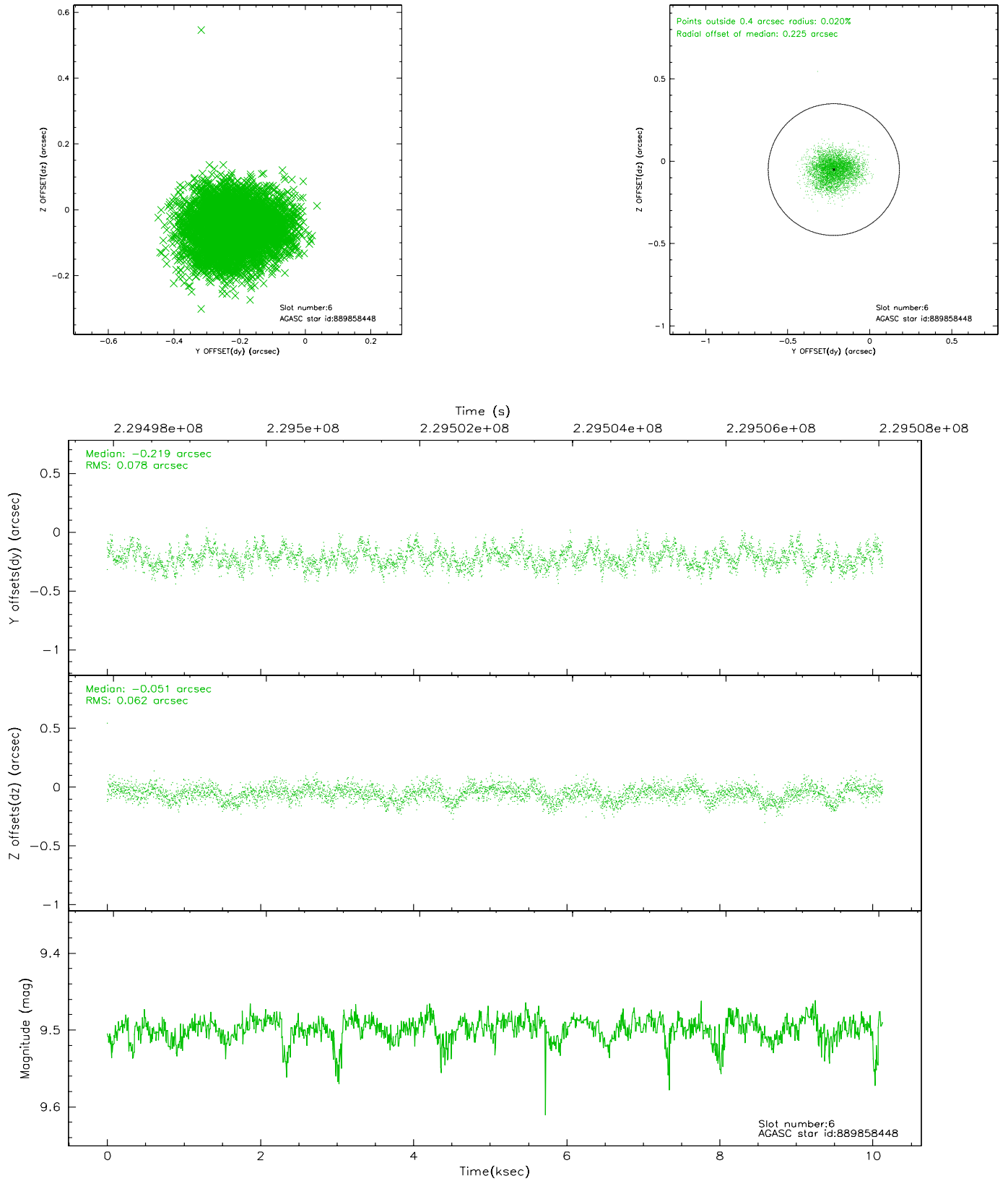
## 2.4.2 Slot 4



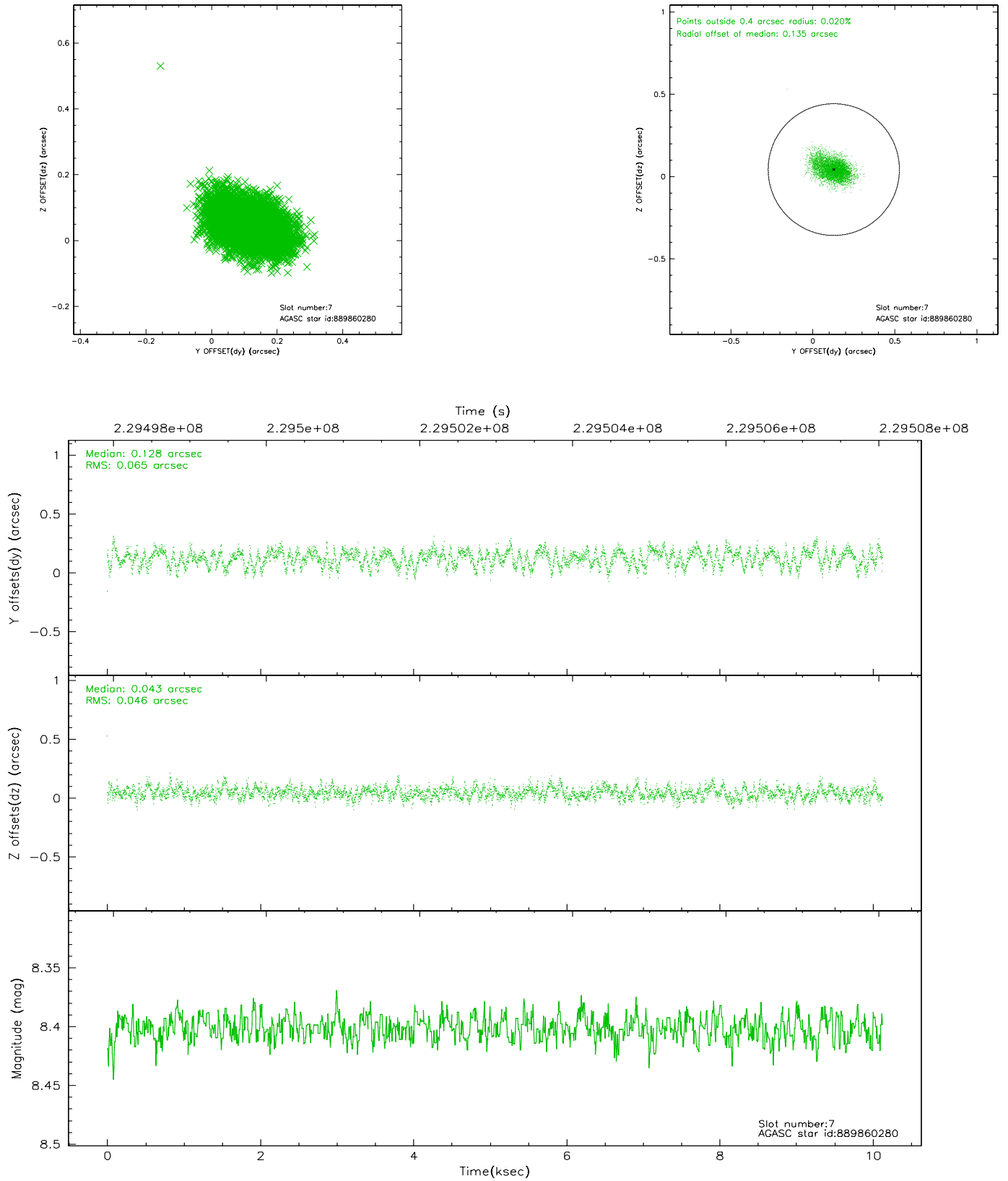
### 2.4.3 Slot 5



## 2.4.4 Slot 6

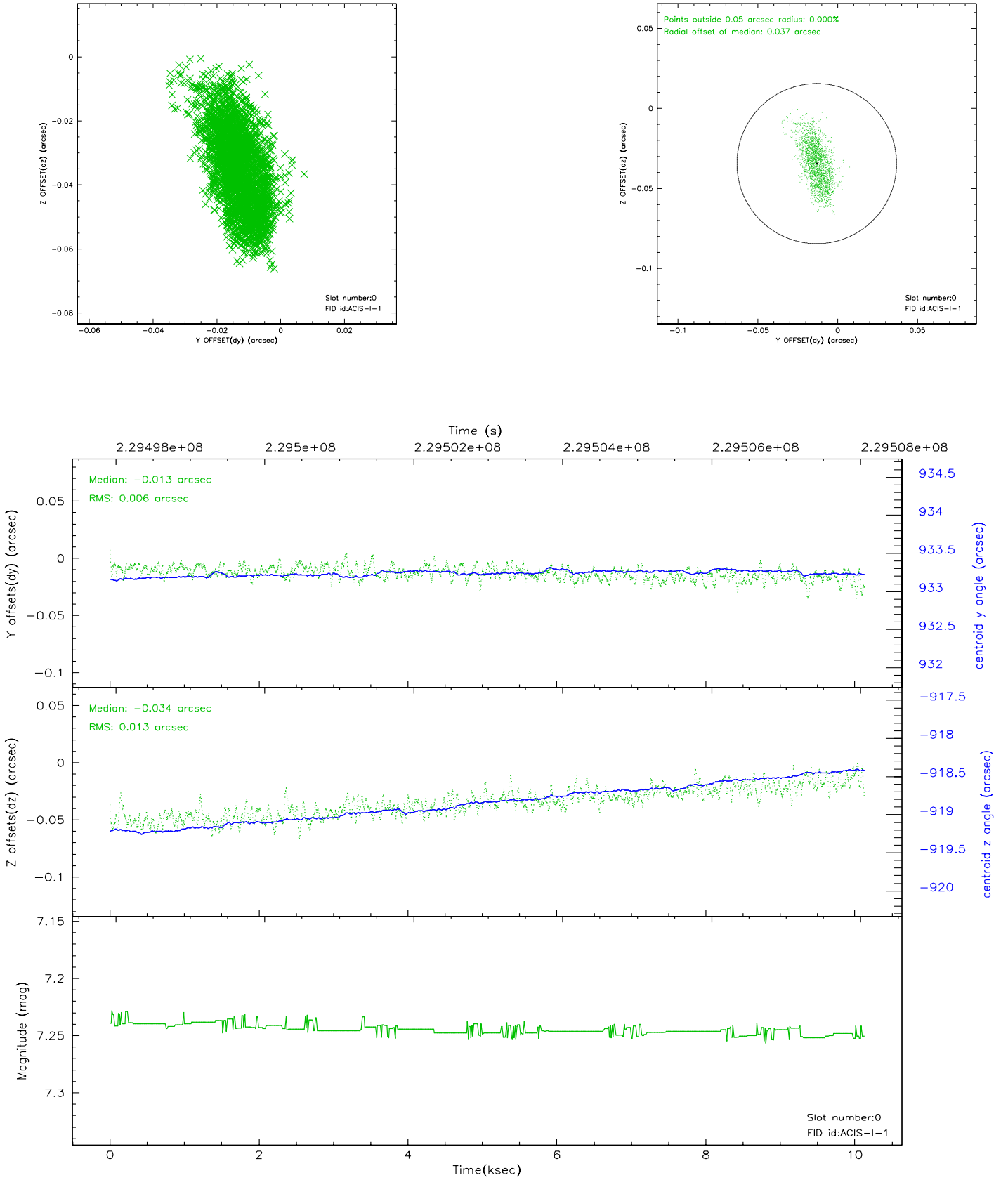


## 2.4.5 Slot 7

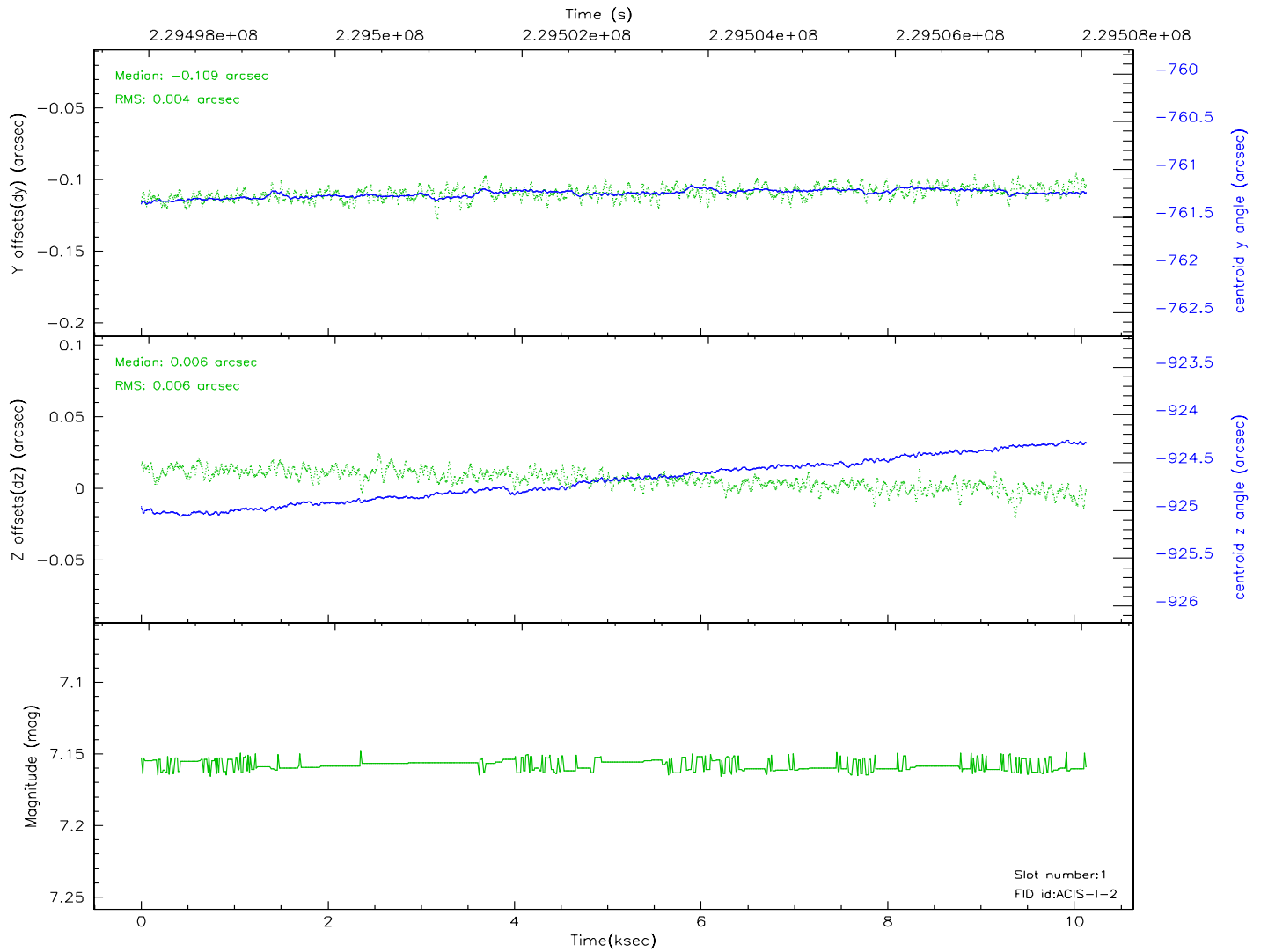
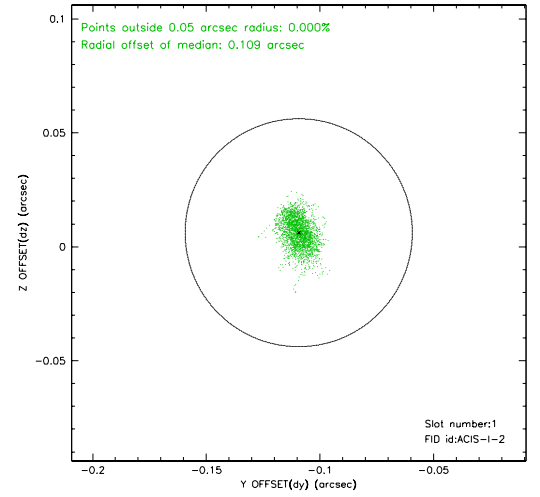
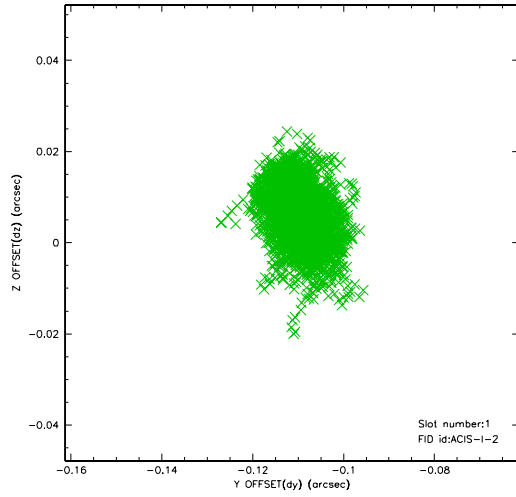


## 2.5 FID Slots

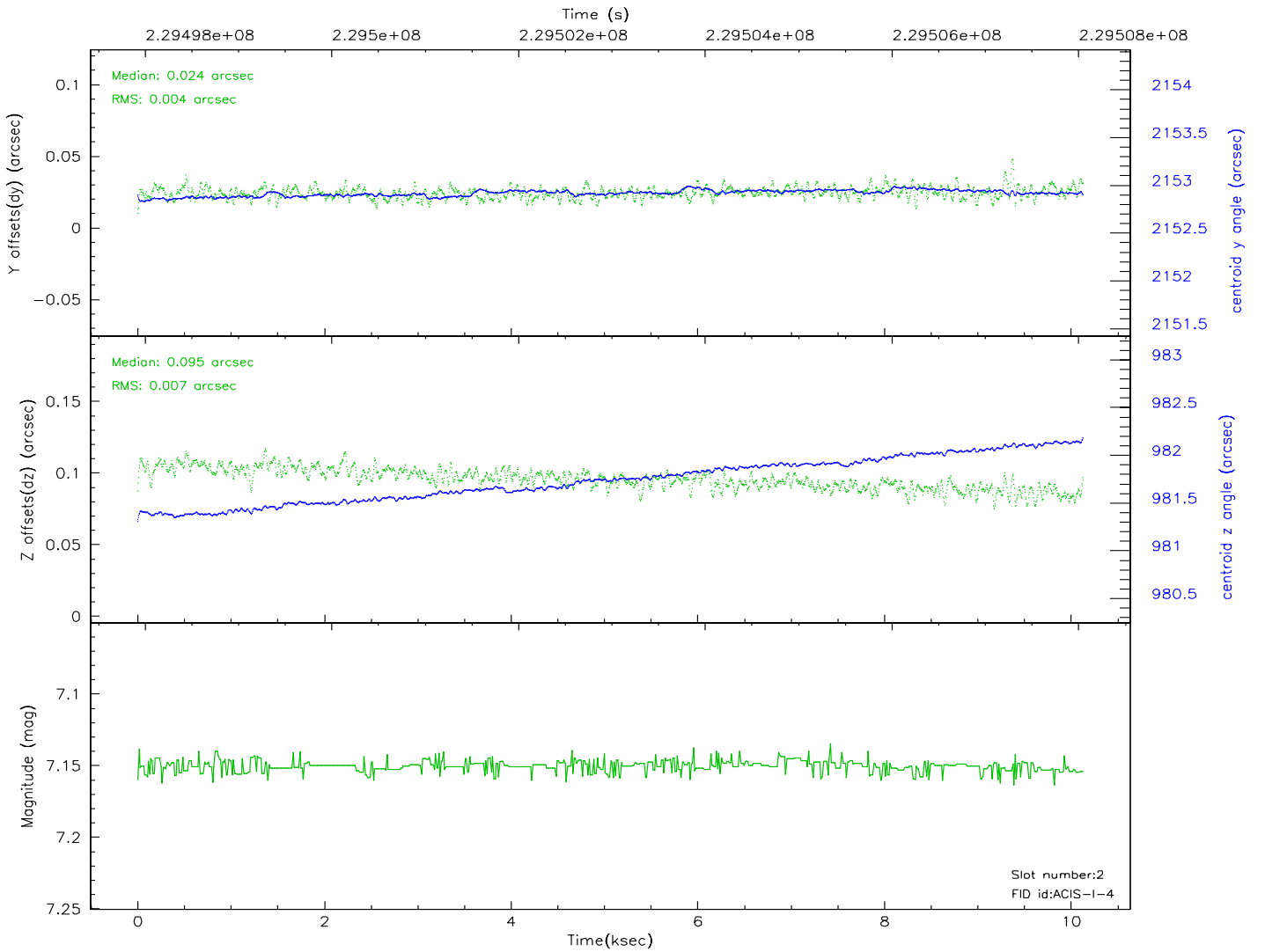
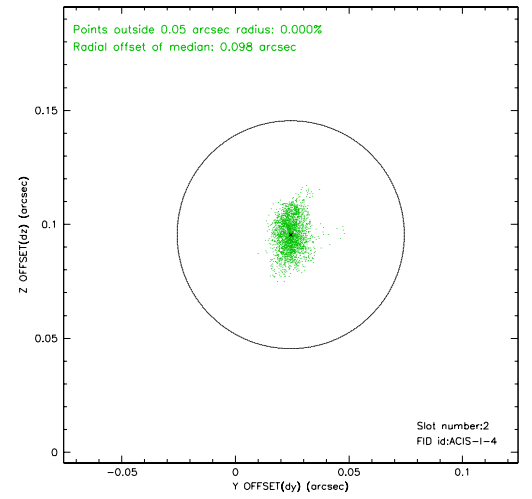
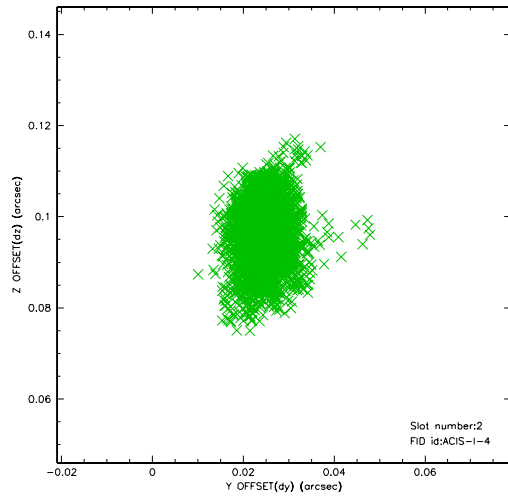
### 2.5.1 Slot 0



## 2.5.2 Slot 1

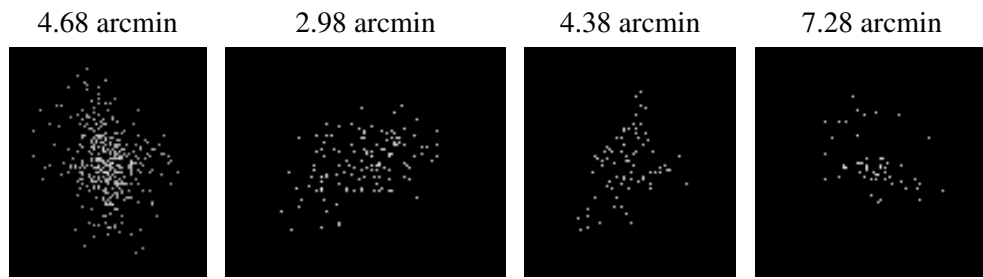


### 2.5.3 Slot 2





### 3 Point Sources



## A Summary

### A.1 Status

V&V Scientist	Beth Sundheim
V&V Date (YYYY-MM-DD)	2006.02.28
V&V Edition	1
V&V Disposition and Status	OK
V&V Charge Time	10.12769

### A.2 Comments