

# V&V Reference Report

## L2 ASCDS Version : 8.4.5

Observation 56070 - L2 Version 2  
Chandra X-Ray Center

L2 Processing Date : Jul 1 2012

## Contents

<b>1</b>	<b>Front</b>	<b>2</b>
<b>2</b>	<b>OBI</b>	<b>3</b>
2.1	OBI . . . . .	3
2.1.1	Images . . . . .	3
2.1.2	Bias . . . . .	3
2.1.3	Parameters . . . . .	4
2.1.4	Events . . . . .	4
2.2	Compared Parameters . . . . .	5
2.3	Star Slots . . . . .	6
2.4	FID Slots . . . . .	6
<b>A</b>	<b>Summary</b>	<b>7</b>
A.1	Status . . . . .	7
A.2	Comments . . . . .	7

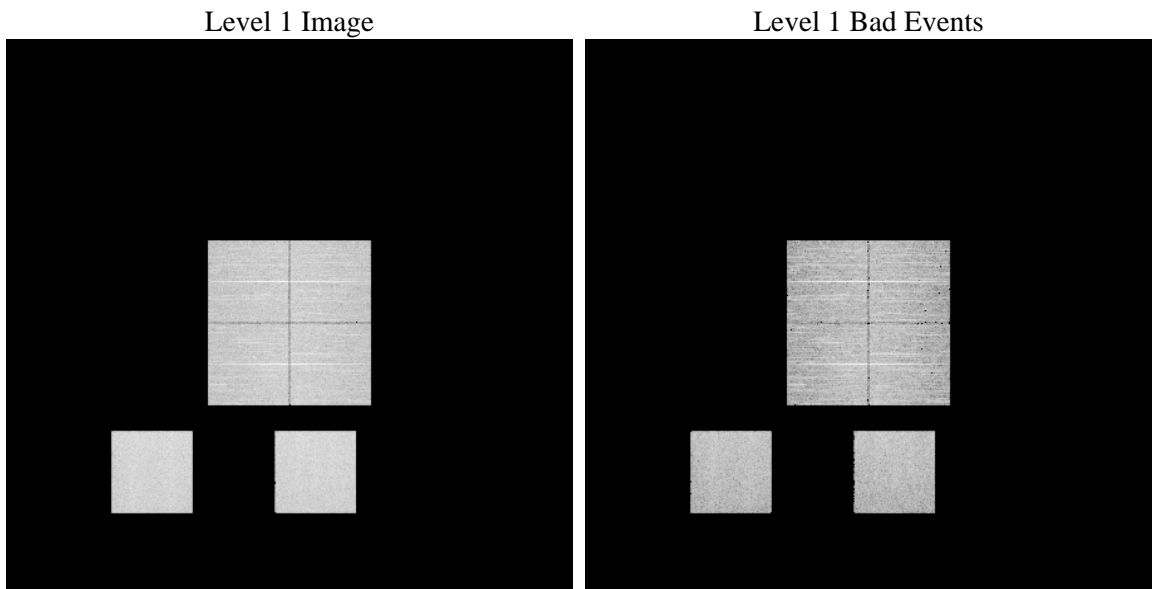
# 1 Front

seq_num	&#160	Sequence number
obs_id	56070	Observation id
title	ACIS-012357 diagnostics	Proposal title
observer	CHANDRA engineering request/realtime commanding	Principal investig
object	&#160	Source name
dtcycle	0	&#160
cycle	P	events from which exps? Prim/Second/Both
ra_targ	0.0	Observer's specified target RA [deg]
dec_targ	0.0	Observer's specified target Dec [deg]
ra_nom	339.01720934229	Nominal RA [deg]
dec_nom	-35.974874248742	Nominal Dec [deg]
roll_nom	28.10157308406	Nominal Roll [deg]
revision	2	Processing version of data
ontime	6527.9999757409	Sum of GTIs [s]
livetime	6445.3385093584	Livetime [s]
ontime0	6527.9999757409	Sum of GTIs [s]
ontime1	6527.9999757409	Sum of GTIs [s]
ontime2	6527.9999757409	Sum of GTIs [s]
ontime3	6527.9999757409	Sum of GTIs [s]
ontime5	6527.9999757409	Sum of GTIs [s]
ontime7	6527.9999757409	Sum of GTIs [s]
l2events	319822	Number of level 2 events

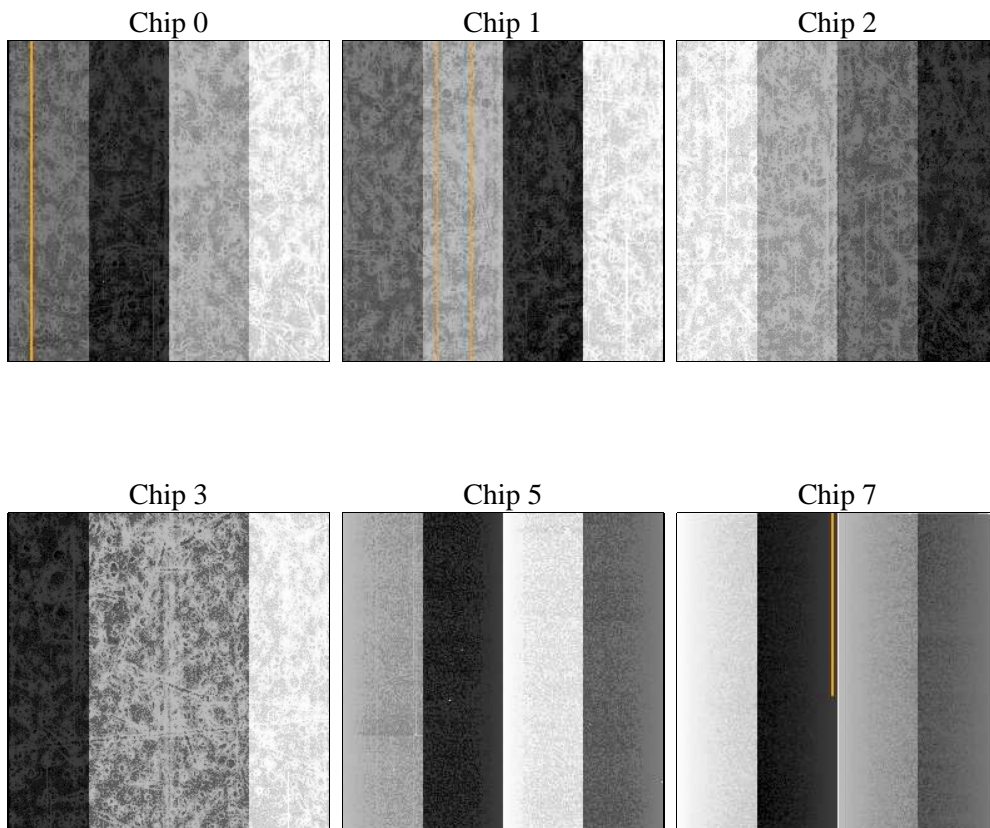
## 2 OBI

### 2.1 OBI

#### 2.1.1 Images



#### 2.1.2 Bias



### 2.1.3 Parameters

obi_num	0	Obi number	sched_exp_time	0.0	[s] Scheduled observation exposure time
ascdsver	8.4.5	Processing system revision	ontime	6527.9999757409	Sum of GTIs [s]
caldsver	4.5.0	&#160	ontime0	6527.9999757409	Sum of GTIs [s]
date	2012-07-01T19:16:19	Date and time of file creation	ontime1	6527.9999757409	Sum of GTIs [s]
revision	2	Processing version of data	ontime2	6527.9999757409	Sum of GTIs [s]
			ontime3	6527.9999757409	Sum of GTIs [s]
			ontime5	6527.9999757409	Sum of GTIs [s]
			ontime7	6527.9999757409	Sum of GTIs [s]
			l1events	648934	Number of level 1 events

### 2.1.4 Events

	ccd 0	ccd 1	ccd 2	ccd 3	ccd 5	ccd 7		ccd 0	ccd 1	ccd 2	ccd 3	ccd 5	ccd 7
level 1 events	97447	97914	99723	100860	127413	125577	grade 0 events	25202	23899	25391	25553	7919	12381
rejected events	50237	50709	53211	53805	53948	51872		25%	24%	25%	25%	6%	9%
rejected %	51%	51%	53%	53%	42%	41%	grade 1 events	145	134	213	185	148	91
								0%	0%	0%	0%	0%	0%
							grade 2 events	8505	9444	7864	8088	27248	16334
								8%	9%	7%	8%	21%	13%
							grade 3 events	3103	3167	3202	3270	2692	6440
								3%	3%	3%	3%	2%	5%
							grade 4 events	3222	3138	3108	3285	2632	6318
								3%	3%	3%	3%	2%	5%
							grade 5 events	3037	3006	2842	3234	6445	7994
								3%	3%	2%	3%	5%	6%
							grade 6 events	7200	7572	6979	6884	33003	32275
								7%	7%	6%	6%	25%	25%
							grade 7 events	47033	47554	50124	50361	47326	43744
								48%	48%	50%	49%	37%	34%

## 2.2 Compared Parameters

Parameter	Planned	Actual	Parameter	Planned	Actual
Instrument	ACIS	ACIS	Obspar format version number	7	7
Detector	ACIS-012357	ACIS-012357	Obspar file type	PREDICTED	ACTUAL
Grating	NONE	NONE	Obspar update status	NONE	UPDATED
Data mode	FAINT	FAINT	Number of optional ACIS chips dropped	0	0
Observation mode	SECONDARY	SECONDARY	On-chip summing requested	N	N
[deg] Pointing RA	0	339.0172093422907	Subarray requested	NONE	NONE
[deg] Pointing Dec	0	-35.97487424874202	Alternating exposures requested	N	N
[deg] Pointing Roll	0.0	28.10157308405954	[s] Primary exposure time	3.2	3.2
[mm] SIM focus pos	-1.429586	-1.428180813131781			
[mm] SIM defocus	0.1037507710433287	0.1051558262725154			
[mm] SIM translation stage pos	250.455976	250.4635187648994			
[mm] SIM translation stage offset	0	-0.007540371344731511			
[s] Observation start time (MET)	398479112.205739	398479111.18074			
Observation start date	2010-08-18T00:38:32	2010-08-18T00:38:31			
[s] Observation end time (MET)	398489413.456267	398489412.43127			
Observation end date	2010-08-18T03:30:13	2010-08-18T03:30:12			
Read mode	TIMED	TIMED			

## **2.3 Star Slots**

## **2.4 FID Slots**

## **A Summary**

### **A.1 Status**

V&V Scientist	Beth Sundheim
V&V Date (YYYY-MM-DD)	2012.07.10
V&V Edition	1
V&V Disposition and Status	OK
V&V Charge Time	6.5279999757409

### **A.2 Comments**