

V&V Reference Report

L2 ASCDS Version : 8.5

Observation 5350 - L2 Version 3
Chandra X-Ray Center

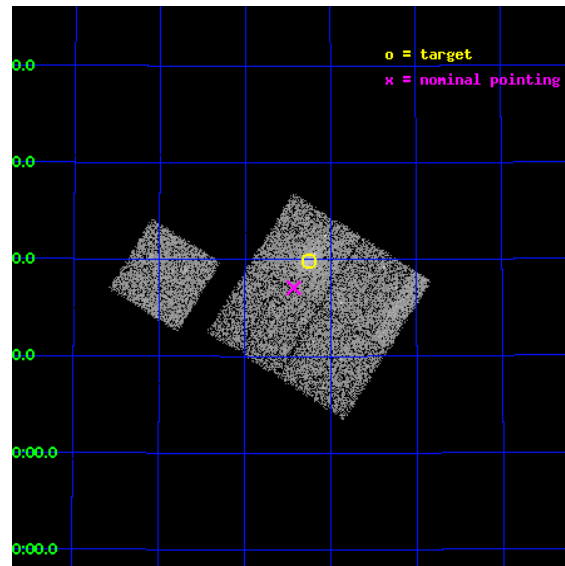
L2 Processing Date : Dec 6 2012

Contents

1	Front	2
2	OBI	3
2.1	OBI	3
2.1.1	Images	3
2.1.2	Bias	3
2.1.3	Parameters	4
2.1.4	Events	4
2.2	Compared Parameters	5
2.3	Aspect	6
2.4	Star Slots	9
2.4.1	Slot 3	9
2.4.2	Slot 4	10
2.4.3	Slot 5	11
2.4.4	Slot 6	12
2.4.5	Slot 7	13
2.5	FID Slots	14
2.5.1	Slot 0	14
2.5.2	Slot 1	15
2.5.3	Slot 2	16
A	Summary	17
A.1	Status	17
A.2	Comments	17

1 Front

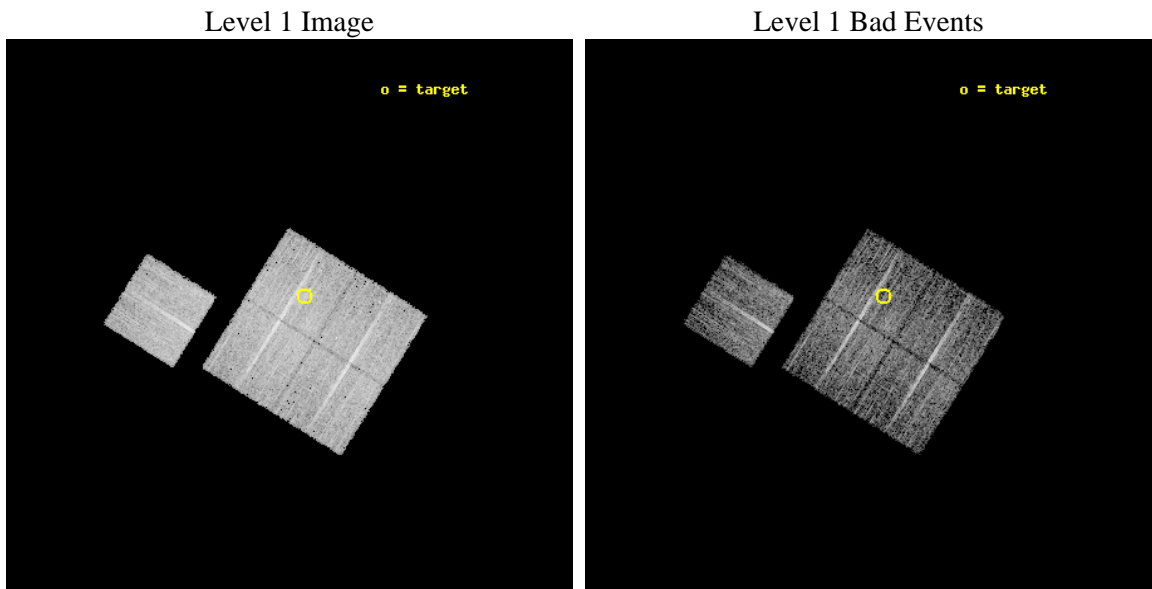
seq_num	800451	Sequence number
obs_id	5350	Observation id
title	Cluster studies: Determination of H0/q0	Proposal title
observer	DR. LEON VANSPEYBROECK	Principal investigator
object	MACS1115.2+5320	Source name
dtcycle	0	
cycle	P	events from which exps? Prim/Second/Both
ra_targ	168.812083	Observer's specified target RA [deg]
dec_targ	53.331944	Observer's specified target Dec [deg]
ra_nom	168.85738738692	Nominal RA [deg]
dec_nom	53.284848357693	Nominal Dec [deg]
roll_nom	302.00457346134	Nominal Roll [deg]
revision	3	Processing version of data
ontime	6962.599986583	Sum of GTIs [s]
livetime	6871.6284919667	Livetime [s]
ontime0	6962.599986583	Sum of GTIs [s]
ontime1	6959.4590163231	Sum of GTIs [s]
ontime2	6962.599986583	Sum of GTIs [s]
ontime3	6962.599986583	Sum of GTIs [s]
ontime6	6959.4590263367	Sum of GTIs [s]
l2events	30609	Number of level 2 events



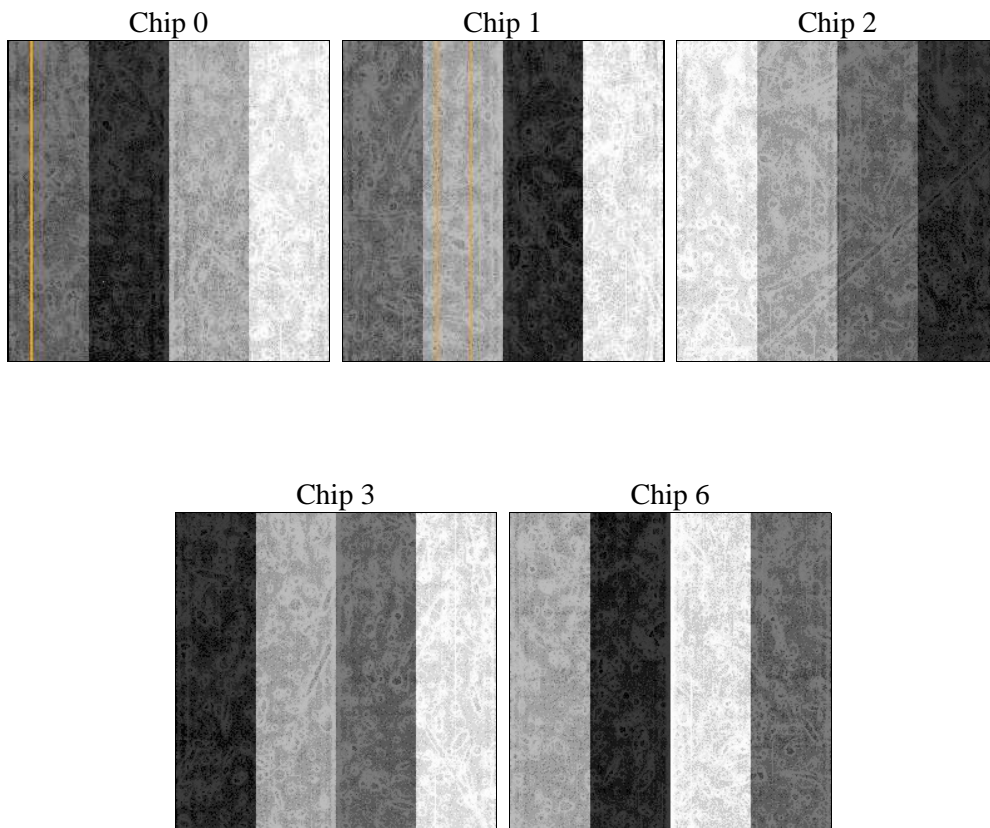
2 OBI

2.1 OBI

2.1.1 Images



2.1.2 Bias



2.1.3 Parameters

obi_num	2	Obi number	sched_exp_time	6780.000000	[s] Scheduled observation exposure time
ascdsver	8.5	Processing system revision	ontime	6962.599986583	Sum of GTIs [s]
caldsver	4.5.4	 	ontime0	6962.599986583	Sum of GTIs [s]
date	2012-12-06T22:15:02	Date and time of file creation	ontime1	6959.4590163231	Sum of GTIs [s]
revision	3	Processing version of data	ontime2	6962.599986583	Sum of GTIs [s]
			ontime3	6962.599986583	Sum of GTIs [s]
			ontime6	6959.4590263367	Sum of GTIs [s]
			l1events	224746	Number of level 1 events

2.1.4 Events

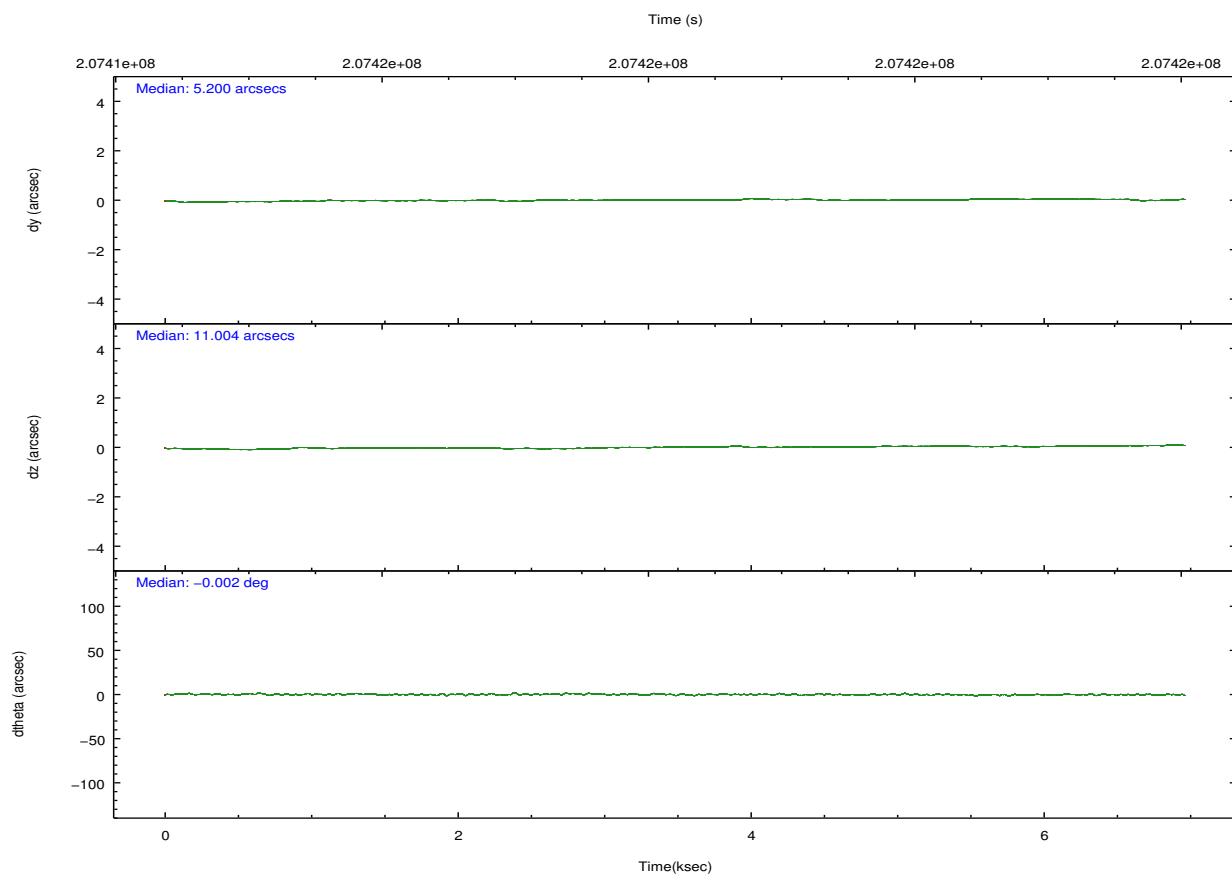
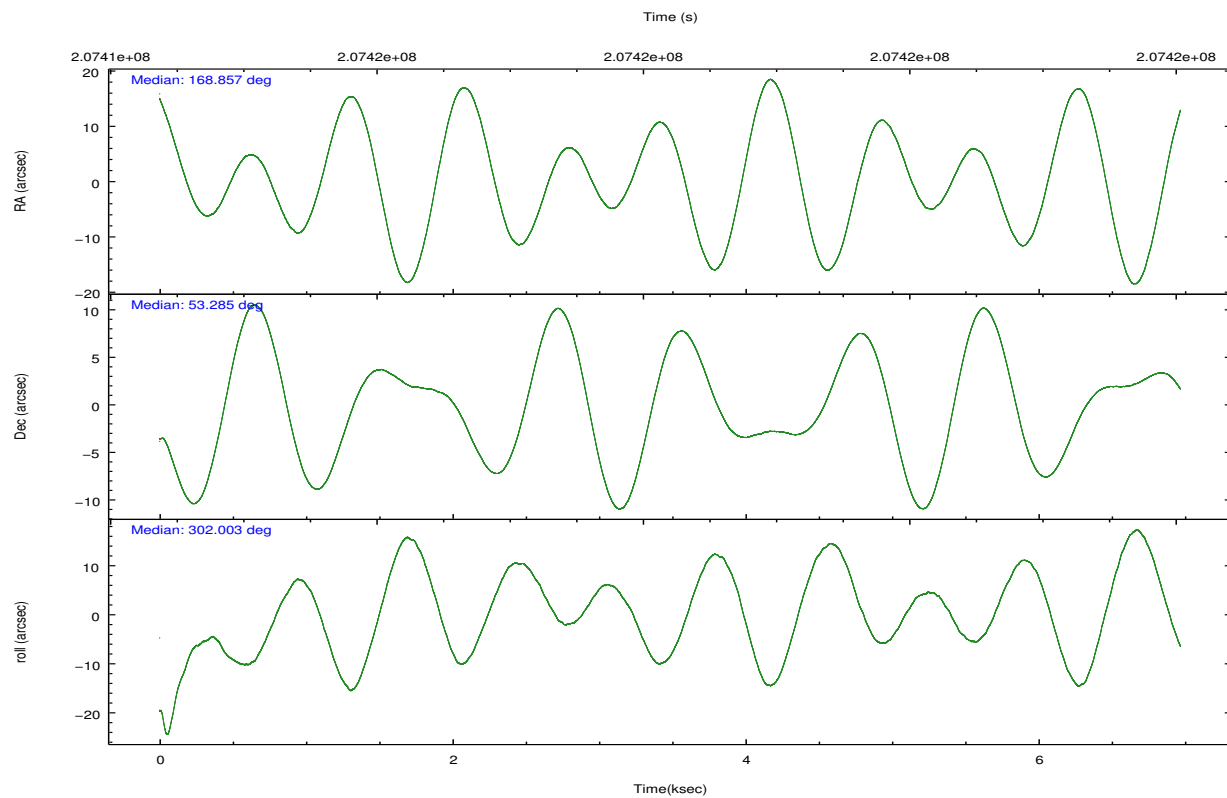
	ccd 0	ccd 1	ccd 2	ccd 3	ccd 6
level 1 events	41755	42858	46095	46851	47187
rejected events	35179	35223	39319	38687	39712
rejected %	84%	82%	85%	82%	84%

	ccd 0	ccd 1	ccd 2	ccd 3	ccd 6
grade 0 events	3297	3969	3478	4924	4021
	7%	9%	7%	10%	8%
grade 1 events	34	29	38	41	27
	0%	0%	0%	0%	0%
grade 2 events	1440	1479	1415	1259	1331
	3%	3%	3%	2%	2%
grade 3 events	556	635	504	579	568
	1%	1%	1%	1%	1%
grade 4 events	513	562	634	578	590
	1%	1%	1%	1%	1%
grade 5 events	1333	1501	1314	1470	1503
	3%	3%	2%	3%	3%
grade 6 events	842	1068	838	914	1040
	2%	2%	1%	1%	2%
grade 7 events	33740	33615	37874	37086	38107
	80%	78%	82%	79%	80%

2.2 Compared Parameters

Parameter	Planned	Actual	Parameter	Planned	Actual
Instrument	ACIS	ACIS	Obspar format version number	7	7
Detector	ACIS-01236	ACIS-01236	Obspar file type	PREDICTED	ACTUAL
Grating	NONE	NONE	Obspar update status	NONE	UPDATED
Data mode	VFAINT	VFAINT	Number of optional ACIS chips dropped	0	0
Observation mode	POINTING	POINTING	On-chip summing requested	N	N
[deg] Pointing RA	168.816878	168.8573873869159	Subarray requested	NONE	NONE
[deg] Pointing Dec	53.297610	53.28484835769254	Alternating exposures requested	N	N
[deg] Pointing Roll	301.828362	302.0045734613431	[s] Primary exposure time	0.000000	3.1
[mm] SIM focus pos	-0.782348	-0.7809083437167272			
[mm] SIM defocus	0	0.001439871863259334			
[mm] SIM translation stage pos	-225.840463	-225.8458576473255			
[mm] SIM translation stage offset	-7.752	-7.746595355604228			
[s] Observation start time (MET)	207414904.184000	207413868.59489			
Observation start date	2004-07-28T15:14:00	2004-07-28T14:57:48			
[s] Observation end time (MET)	207421684.184000	207422196.20776			
Observation end date	2004-07-28T17:07:00	2004-07-28T17:16:36			
Read mode	TIMED	TIMED			

2.3 Aspect

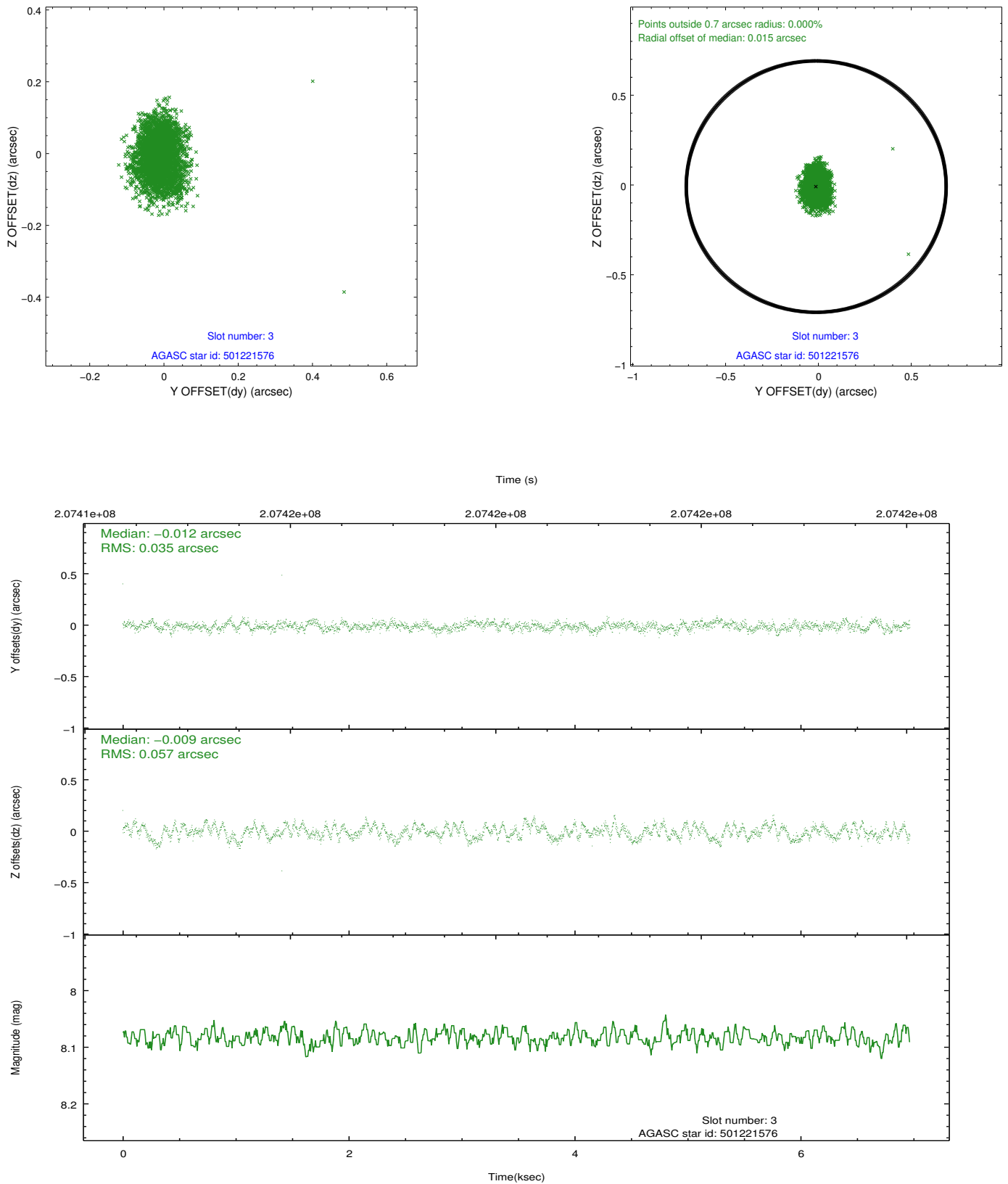


Slot Statistics

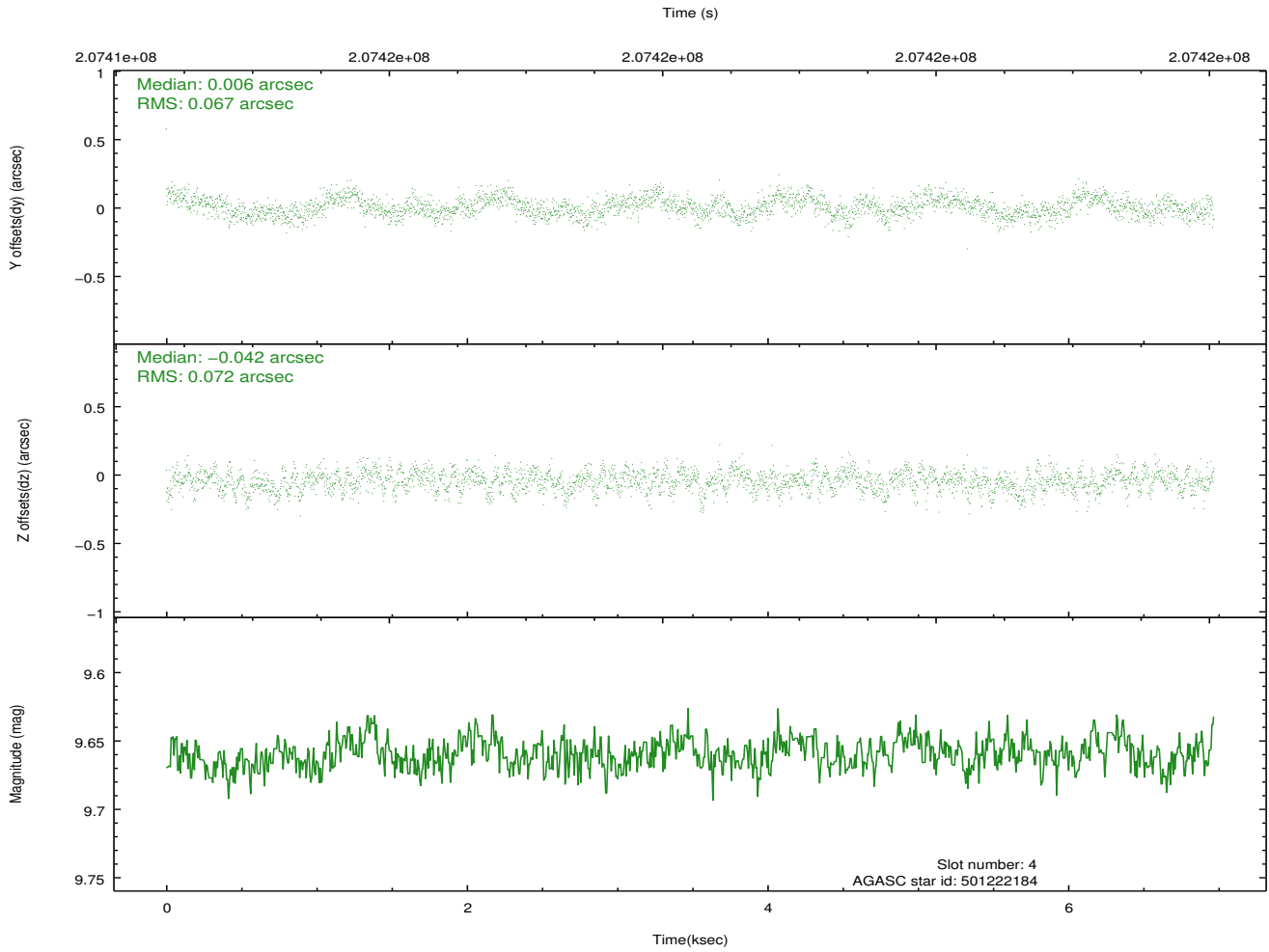
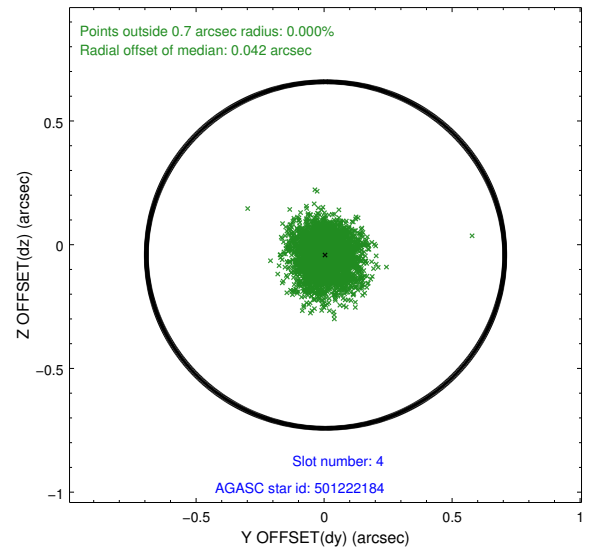
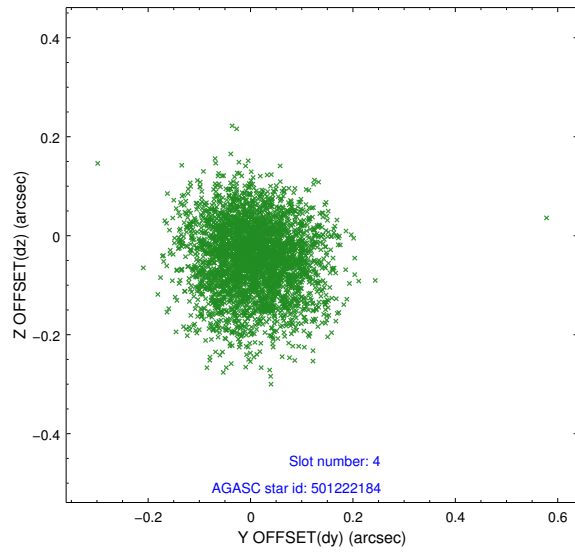
slot	status	id	mag	n_pts	med_dy	med_dz	dr1	dr2	ra	dec	mean_y	mean_z
0	FID	ACIS-I-4	7.14	1700	-0.057	0.095	0.008	0.013	0.000000	0.000000	2153.85	907.42
1	FID	ACIS-I-5	7.22	1700	-0.177	0.036	0.006	0.011	0.000000	0.000000	-1812.72	904.60
2	FID	ACIS-I-6	7.25	1700	0.134	-0.063	0.009	0.015	0.000000	0.000000	399.16	1548.84
3	GUIDE	501221576	8.08	3400	-0.012	-0.009	0.071	0.112	168.270365	53.371526	-848.34	-854.28
4	GUIDE	501222184	9.66	3398	0.006	-0.042	0.105	0.170	167.983435	53.210384	-689.32	-1686.69
5	GUIDE	501224736	8.65	3399	-0.024	0.027	0.079	0.121	167.843158	53.060877	-398.45	-2232.02
6	GUIDE	501226072	7.54	3400	-0.049	0.015	0.060	0.098	168.396705	52.850484	884.13	-1624.04
7	GUIDE	501226240	7.44	3399	0.078	0.014	0.058	0.092	168.639140	52.946889	870.20	-993.21

2.4 Star Slots

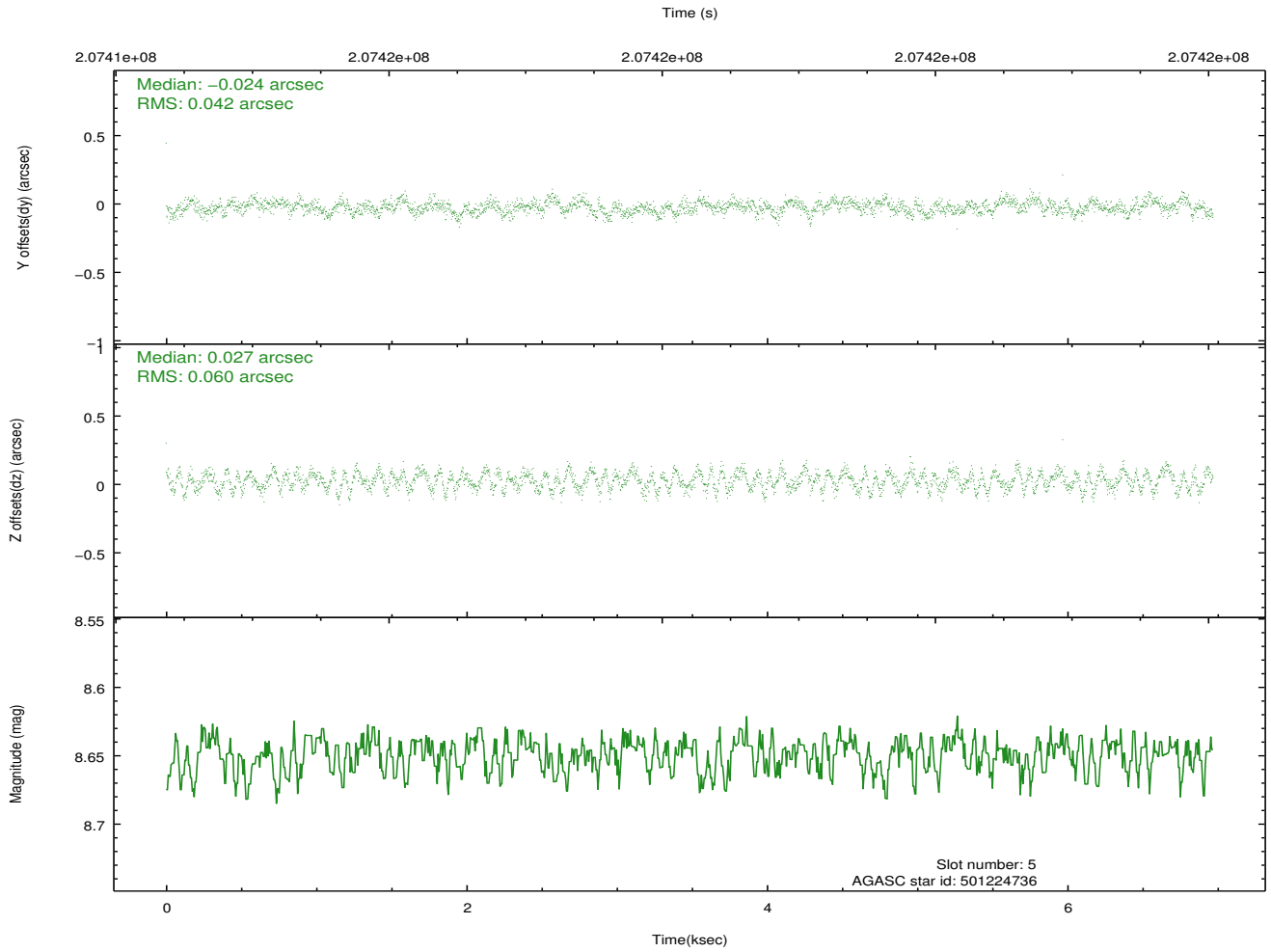
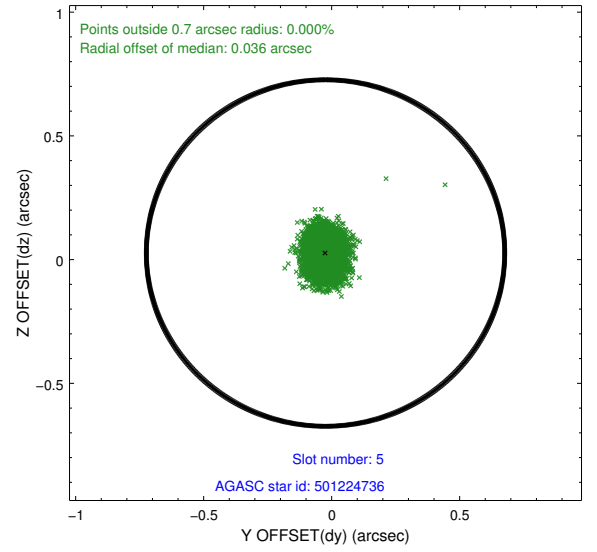
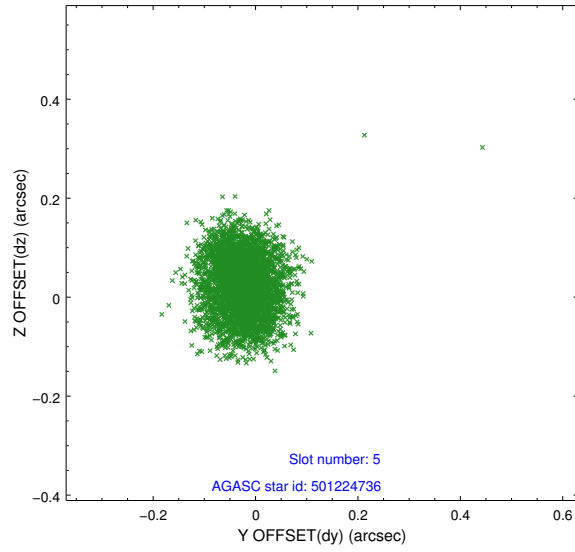
2.4.1 Slot 3



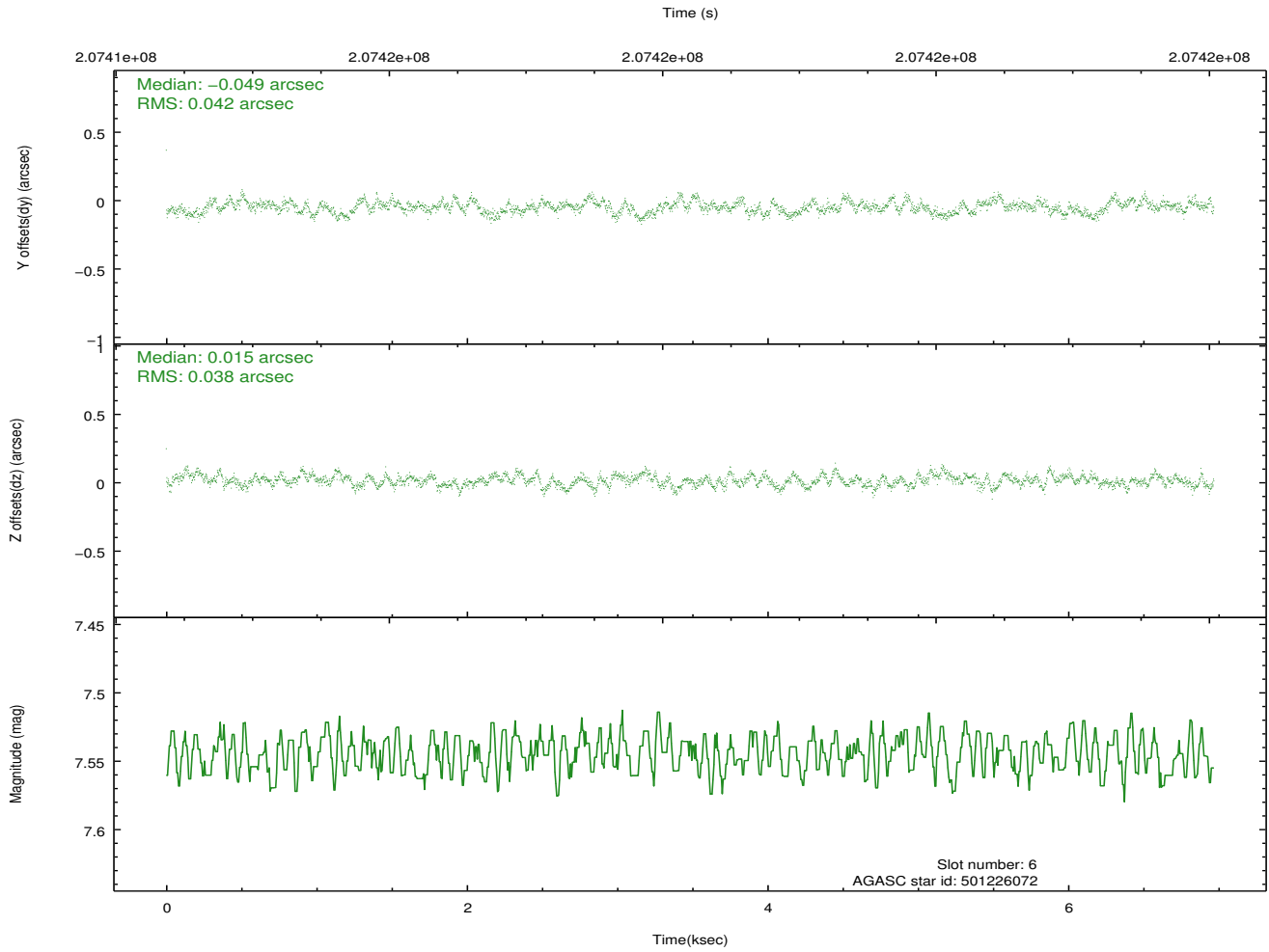
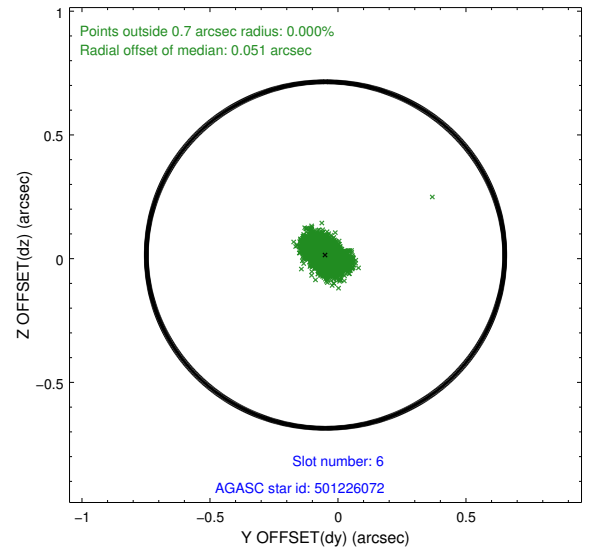
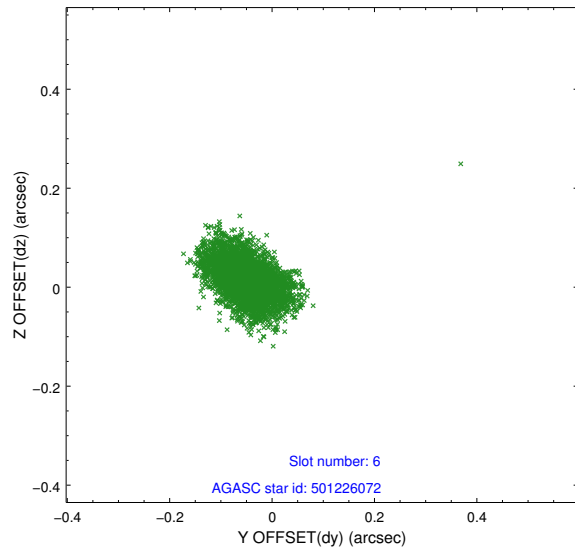
2.4.2 Slot 4



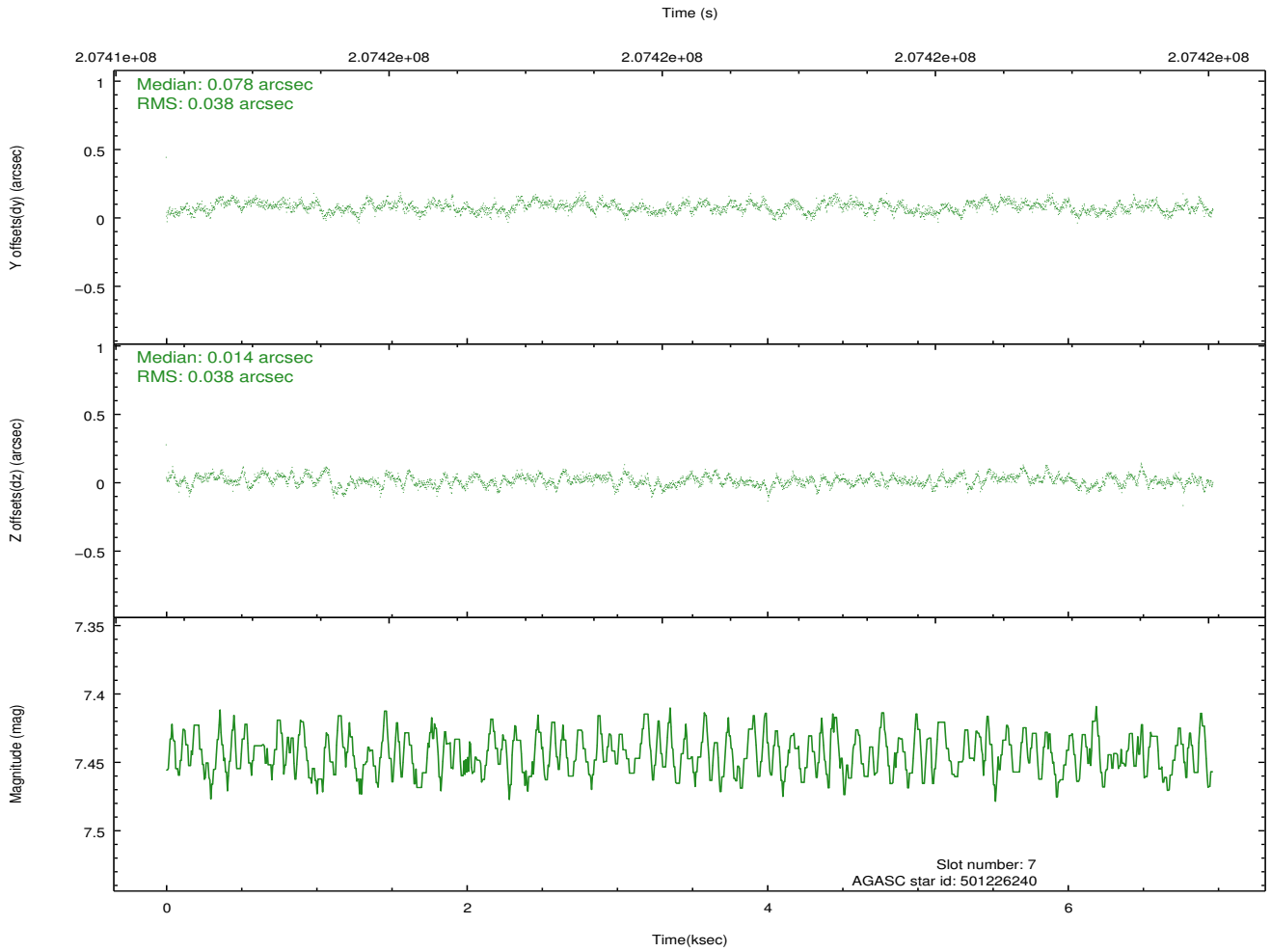
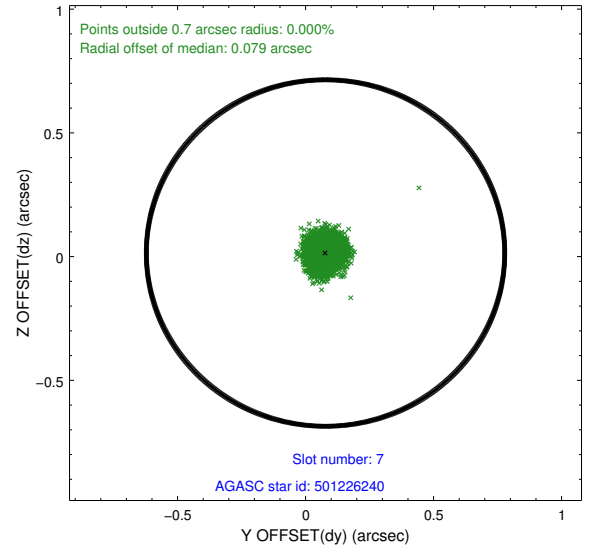
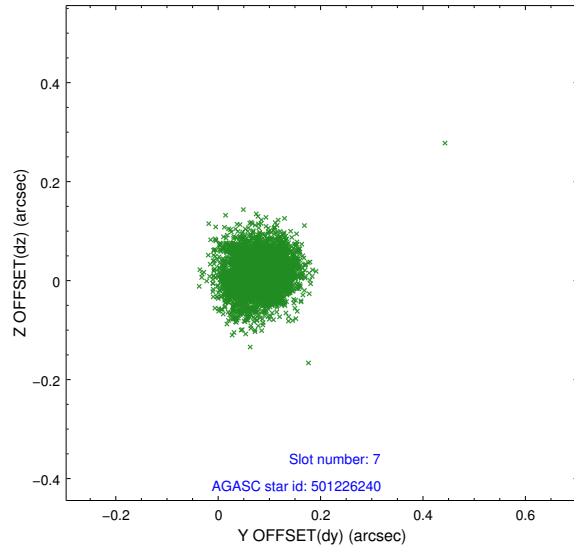
2.4.3 Slot 5



2.4.4 Slot 6

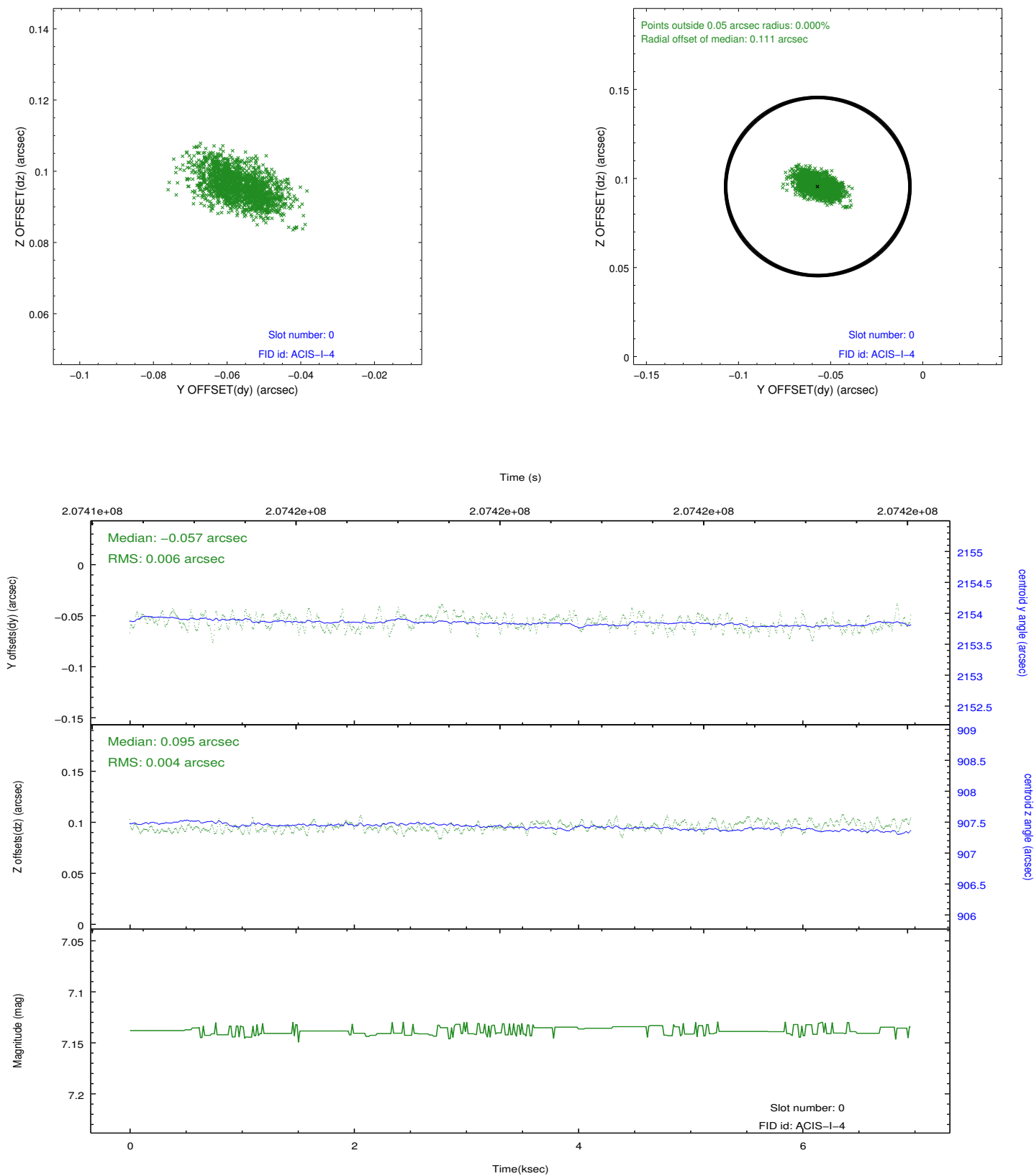


2.4.5 Slot 7

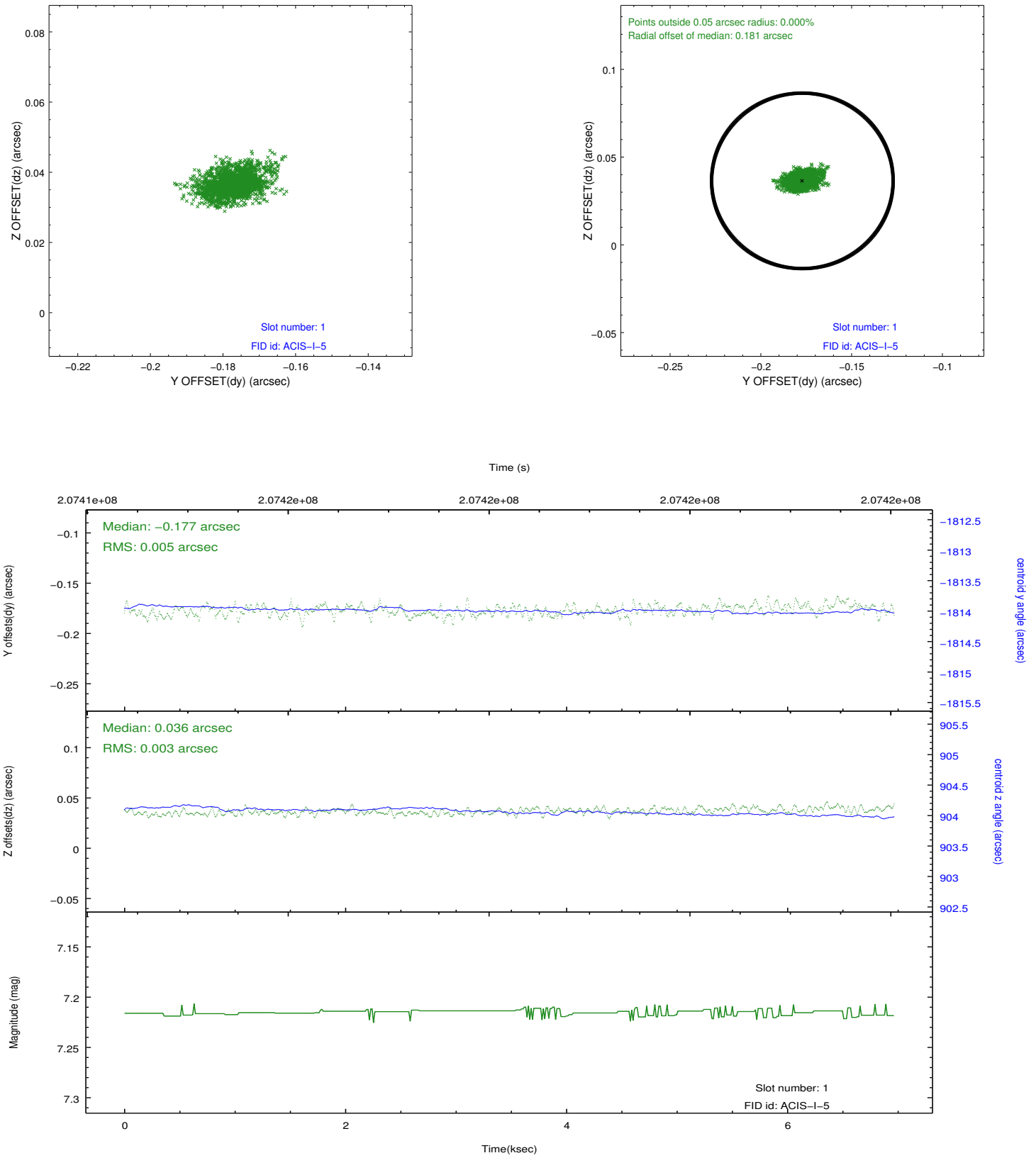


2.5 FID Slots

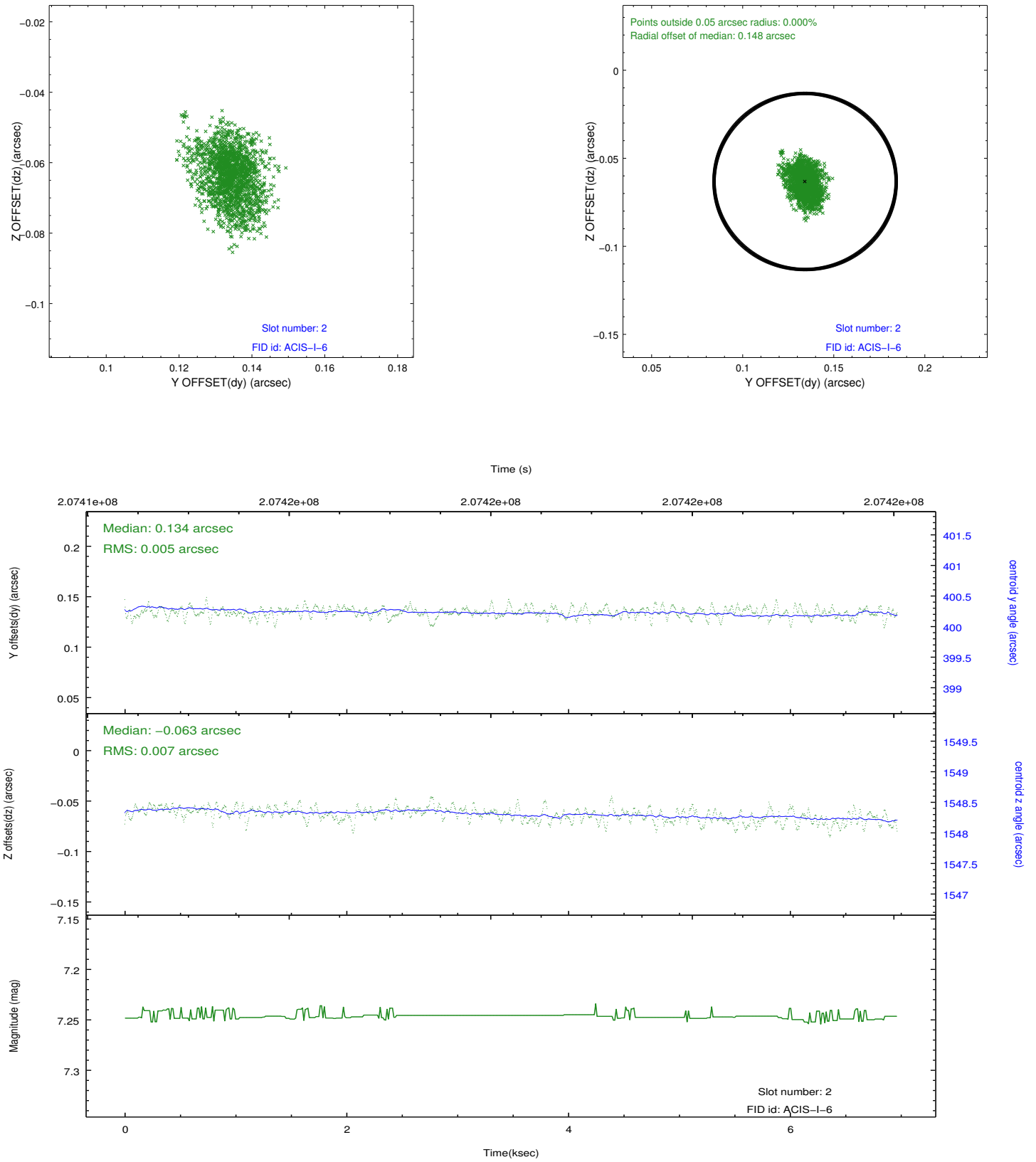
2.5.1 Slot 0



2.5.2 Slot 1



2.5.3 Slot 2



A Summary

A.1 Status

V&V Scientist	Jen Lauer
V&V Date (YYYY-MM-DD)	2012.12.20
V&V Edition	1
V&V Disposition and Status	OK
V&V Charge Time	6.962

A.2 Comments