

# V&V Reference Report

## L2 ASCDS Version : 10.4

Observation 51820 - L2 Version 1  
Chandra X-Ray Center

L2 Processing Date : Jun 22 2015

## Contents

<b>1</b>	<b>Front</b>	<b>2</b>
<b>2</b>	<b>OBI</b>	<b>3</b>
2.1	OBI . . . . .	3
2.1.1	Images . . . . .	3
2.1.2	Bias . . . . .	3
2.1.3	Parameters . . . . .	4
2.1.4	Events . . . . .	4
2.2	Compared Parameters . . . . .	5
2.3	Star Slots . . . . .	6
2.4	FID Slots . . . . .	6
<b>A</b>	<b>Summary</b>	<b>7</b>
A.1	Status . . . . .	7
A.2	Comments . . . . .	7

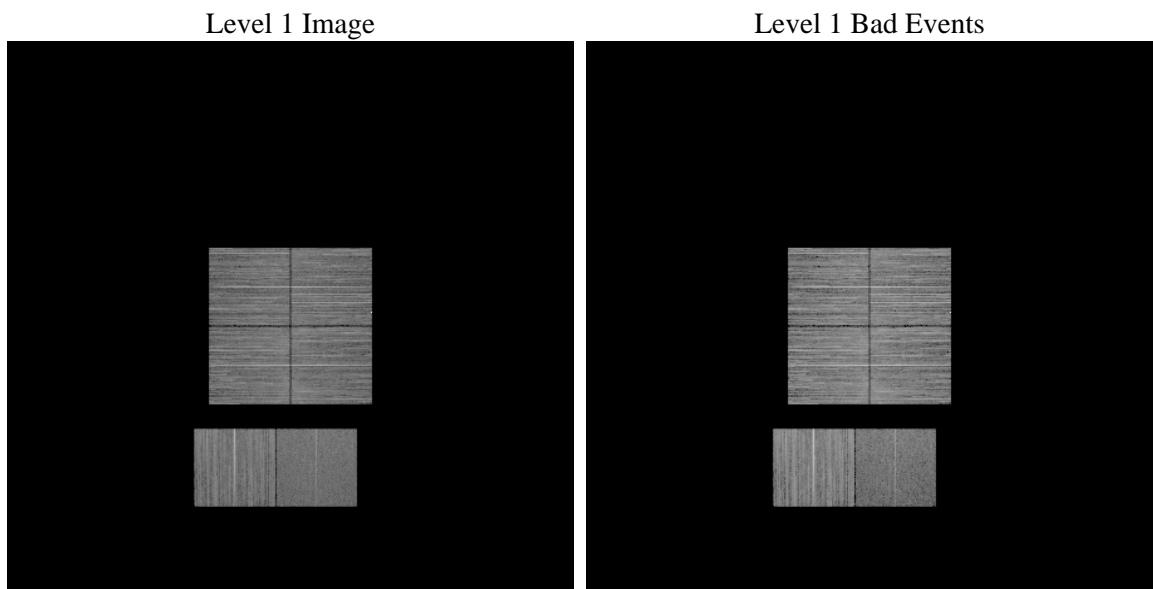
# 1 Front

seq_num	&#160	Sequence number
obs_id	51820	Observation id
title	ACIS-012367 diagnostics	Proposal title
observer	CHANDRA engineering request/realtime commanding	Principal investig
object	&#160	Source name
dtcycle	0	&#160
cycle	P	events from which exps? Prim/Second/Both
ra_targ	0.0	Observer's specified target RA [deg]
dec_targ	0.0	Observer's specified target Dec [deg]
ra_nom	29.964059708234	Nominal RA [deg]
dec_nom	41.021341724156	Nominal Dec [deg]
roll_nom	89.980803801657	Nominal Roll [deg]
revision	1	Processing version of data
ontime	8258.0690518618	Sum of GTIs [s]
livetime	8153.5004091149	Livetime [s]
ontime0	8254.7869915962	Sum of GTIs [s]
ontime1	8257.9869718552	Sum of GTIs [s]
ontime2	8257.9459317923	Sum of GTIs [s]
ontime3	8258.1100918055	Sum of GTIs [s]
ontime6	8257.9048918486	Sum of GTIs [s]
ontime7	8258.0690518618	Sum of GTIs [s]
l2events	150877	Number of level 2 events

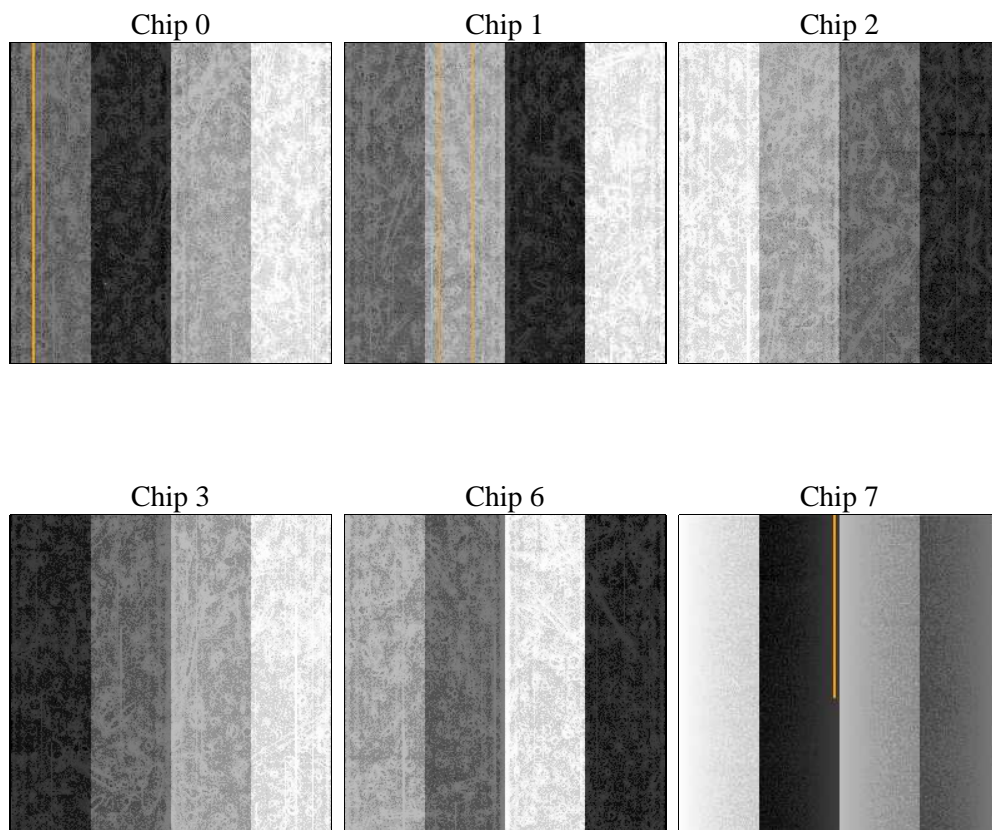
## 2 OBI

### 2.1 OBI

#### 2.1.1 Images



#### 2.1.2 Bias



### 2.1.3 Parameters

obi_num	0	Obi number	sched_exp_time	0.0	[s] Scheduled observation exposure time
ascdsver	10.4	Processing system revision	ontime	8258.0690518618	Sum of GTIs [s]
caldsver	4.6.7	&#160	ontime0	8254.7869915962	Sum of GTIs [s]
date	2015-06-22T05:02:21	Date and time of file creation	ontime1	8257.9869718552	Sum of GTIs [s]
revision	1	Processing version of data	ontime2	8257.9459317923	Sum of GTIs [s]
			ontime3	8258.1100918055	Sum of GTIs [s]
			ontime6	8257.9048918486	Sum of GTIs [s]
			ontime7	8258.0690518618	Sum of GTIs [s]
			l1events	875174	Number of level 1 events

### 2.1.4 Events

	ccd 0	ccd 1	ccd 2	ccd 3	ccd 6	ccd 7		ccd 0	ccd 1	ccd 2	ccd 3	ccd 6	ccd 7
level 1 events	143675	155355	156481	148807	151198	119658	grade 0 events	10648	12660	10961	11113	10610	5873
rejected events	121725	130251	134250	126680	127910	71179		7%	8%	7%	7%	7%	4%
rejected %	84%	83%	85%	85%	84%	59%	grade 1 events	48	2524	70	74	53	101
								0%	1%	0%	0%	0%	0%
							grade 2 events	4860	5485	4581	4501	5387	11970
								3%	3%	2%	3%	3%	10%
							grade 3 events	1463	1510	1551	1591	1518	3660
								1%	0%	0%	1%	1%	3%
							grade 4 events	1473	1455	1608	1559	1485	3616
								1%	0%	1%	1%	0%	3%
							grade 5 events	2816	2851	2708	3141	3127	7486
								1%	1%	1%	2%	2%	6%
							grade 6 events	3580	4078	3601	3437	4364	23525
								2%	2%	2%	2%	2%	19%
							grade 7 events	118787	124792	131401	123391	124654	63427
								82%	80%	83%	82%	82%	53%

## 2.2 Compared Parameters

Parameter	Planned	Actual
Instrument	ACIS	ACIS
Detector	ACIS-012367	ACIS-012367
Grating	NONE	NONE
Data mode	FAINT	FAINT
Observation mode	SECONDARY	SECONDARY
[deg] Pointing RA	0	29.96405970823389
[deg] Pointing Dec	0	41.0213417241557
[deg] Pointing Roll	0.0	89.98080380165703
[mm] SIM focus pos	-1.429586	-1.428180813131781
[mm] SIM defocus	0.1037507710433287	0.1051558262725154
[mm] SIM translation stage pos	250.455976	250.466033080201
[mm] SIM translation stage offset	0	-0.01005468664627074
[s] Observation start time (MET)	551306243.670759	551306242.6457601
Observation start date	2015-06-21T20:37:24	2015-06-21T20:37:22
[s] Observation end time (MET)	551316126.721315	551316125.6963201
Observation end date	2015-06-21T23:22:07	2015-06-21T23:22:05
Read mode	TIMED	TIMED

Parameter	Planned	Actual
Obspar format version number	7	7
Obspar file type	PREDICTED	ACTUAL
Obspar update status	NONE	UPDATED
Number of optional ACIS chips dropped	0	0
On-chip summing requested	N	N
Subarray requested	NONE	NONE
Alternating exposures requested	N	N
[s] Primary exposure time	3.2	3.2

## **2.3 Star Slots**

## **2.4 FID Slots**

## A Summary

### A.1 Status

V&V Scientist	Joy Nichols
V&V Date (YYYY-MM-DD)	2015.06.22
V&V Edition	1
V&V Disposition and Status	OK
V&V Charge Time	8.2580690518618

### A.2 Comments