

V&V Reference Report

L2 ASCDS Version : 7.6.8

Observation 5150 - L2 Version 001
Chandra X-Ray Center

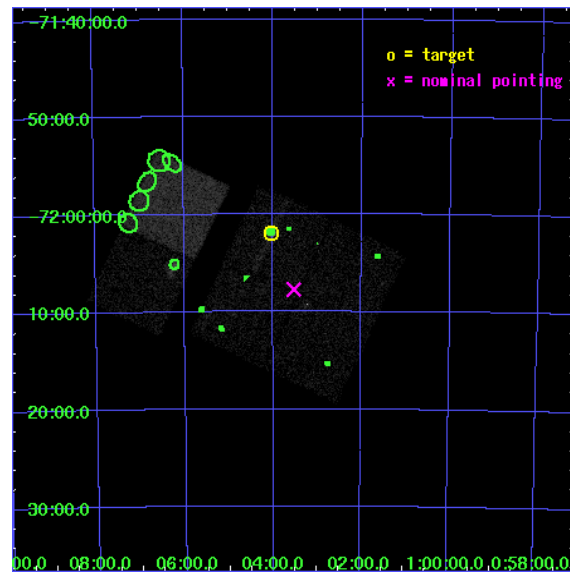
L2 Processing Date : Jun 22 2006

Contents

1	Front	2
2	OBI	3
2.1	OBI	3
2.1.1	Images	3
2.1.2	Bias	3
2.1.3	Parameters	4
2.1.4	Events	4
2.2	Compared Parameters	5
2.3	Aspect	6
2.4	Star Slots	9
2.4.1	Slot 3	9
2.4.2	Slot 4	10
2.4.3	Slot 5	11
2.4.4	Slot 6	12
2.4.5	Slot 7	13
2.5	FID Slots	14
2.5.1	Slot 0	14
2.5.2	Slot 1	15
2.5.3	Slot 2	16
3	Point Sources	17
A	Summary	18
A.1	Status	18
A.2	Comments	18

1 Front

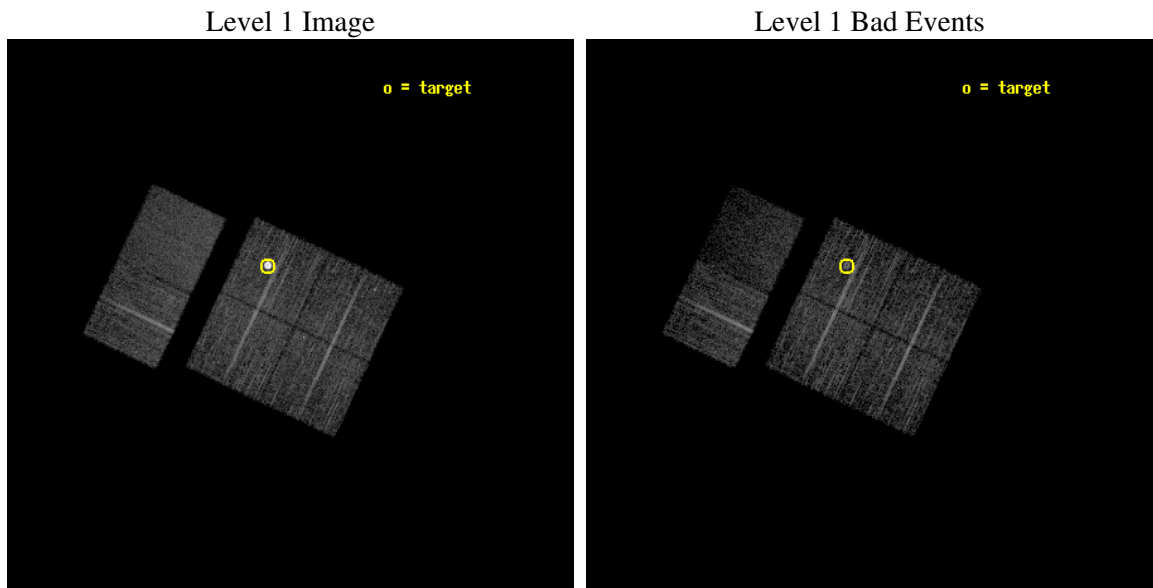
seq_num	590348
obs_id	5150
title	AO5A ACIS-I Calibration Observations of E0102-72
observer	Dr. CXC Calibration
object	E0102-72[I3,-120,-4.0,4.5,0]
dtcycle	0
cycle	P
ra_targ	16.01
dec_targ	-72.032028
ra_nom	15.88222196137
dec_nom	-72.128880152741
roll_nom	295.32942190982
revision	2
ontime	7670.3999714255
livetime	7573.272748427
ontime0	7670.3999714255
ontime1	7670.3999714255
ontime2	7670.3999714255
ontime3	7670.3999714255
ontime6	7670.3999714255
ontime7	7670.3999714255
l2events	56878



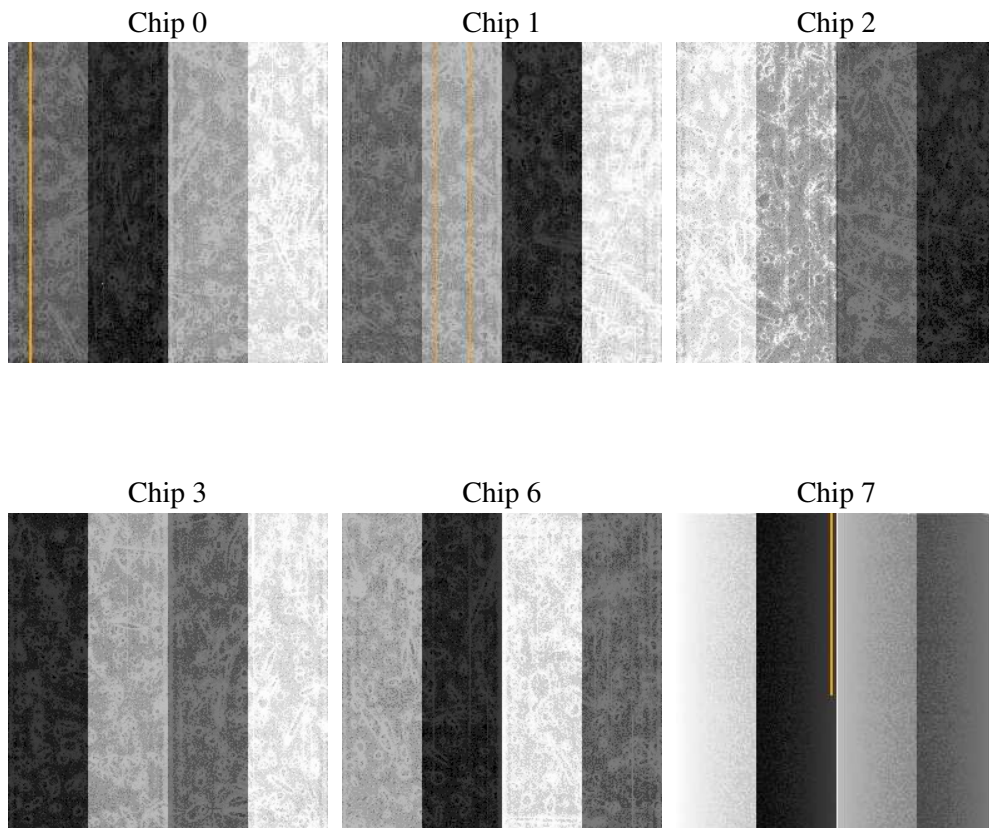
2 OBI

2.1 OBI

2.1.1 Images



2.1.2 Bias



2.1.3 Parameters

obi_num	0
ascdsver	7.6.8
caldsver	3.2.2
date	2006-06-22T04:23:22
revision	2

sched_exp_time	7913.000000
ontime	7674.6908934116
ontime0	7677.9318835735
ontime1	7677.9318835735
ontime2	7677.9318835735
ontime3	7674.6908934116
ontime6	7674.6908735037
ontime7	7674.6908934116
l1events	239174

2.1.4 Events

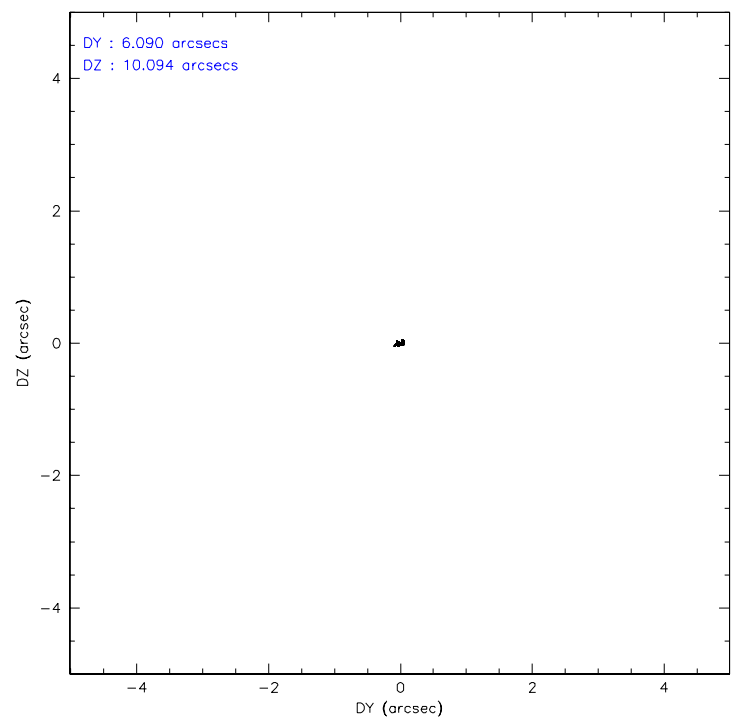
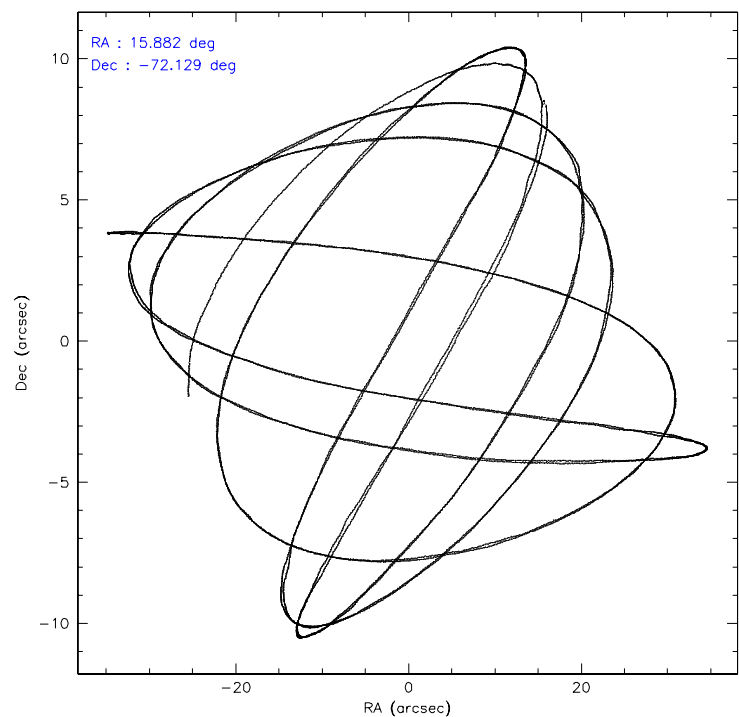
	ccd 0	ccd 1	ccd 2	ccd 3	ccd 6	ccd 7
level 1 events	34272	32917	38779	60787	37194	35225
rejected events	30081	28873	34548	33349	32995	18601
rejected %	87%	87%	89%	54%	88%	52%

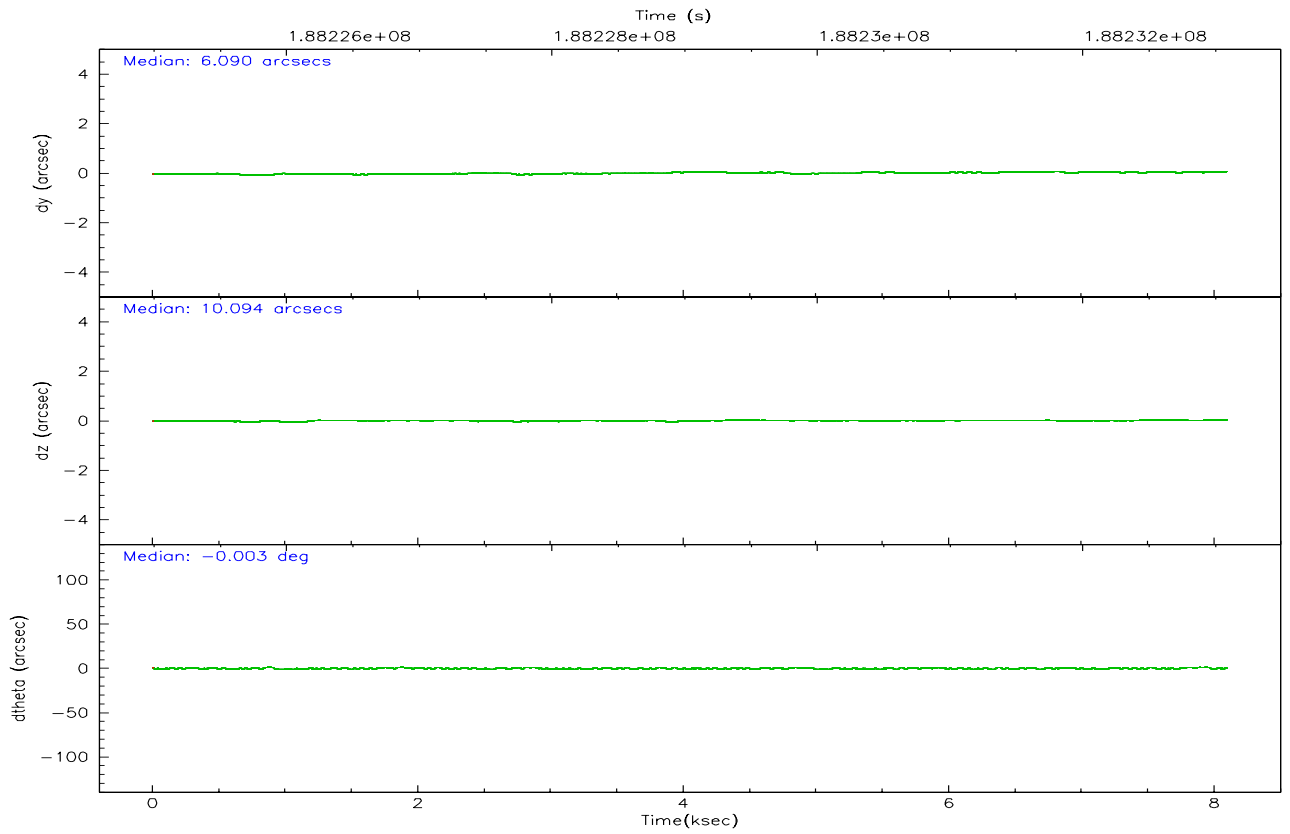
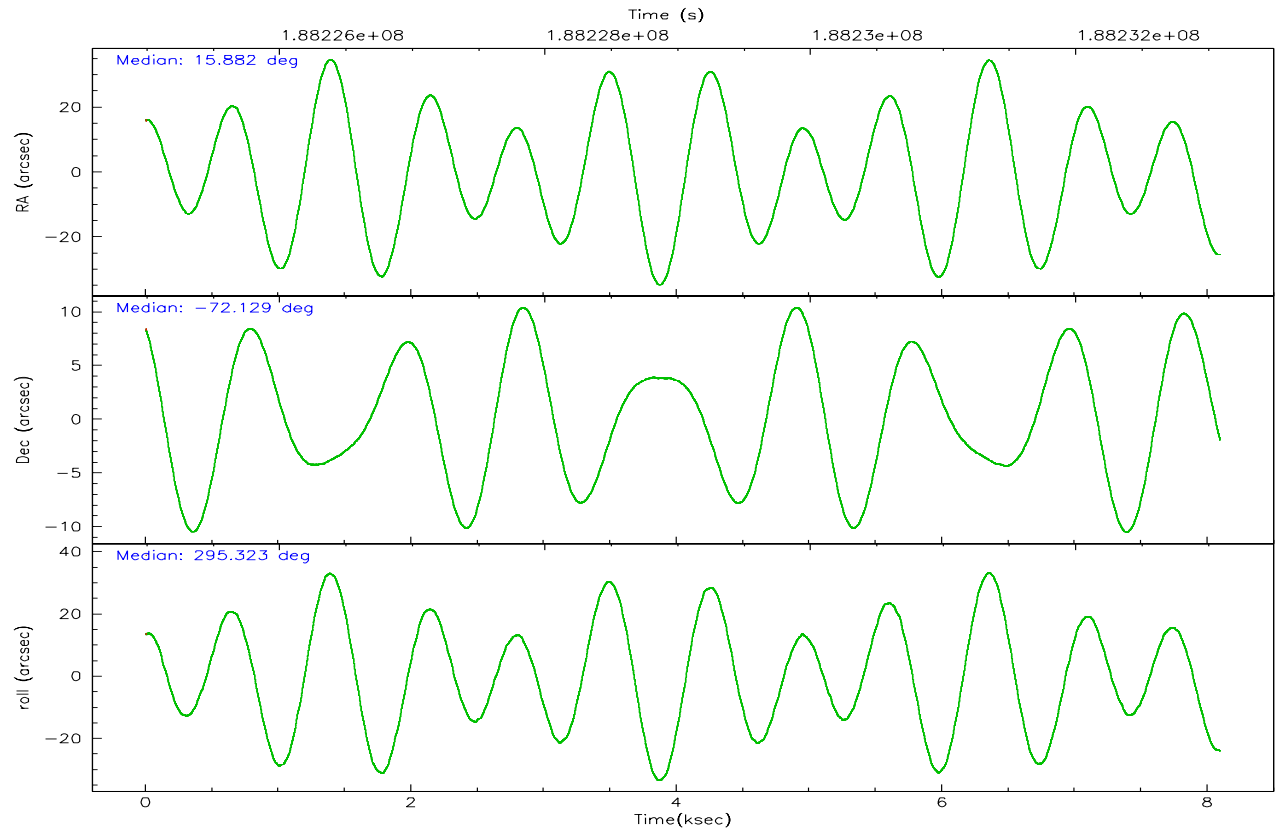
	ccd 0	ccd 1	ccd 2	ccd 3	ccd 6	ccd 7
grade 0 events	1762	1632	1943	22580	1764	1254
	5%	4%	5%	37%	4%	3%
grade 1 events	25	15	14	184	17	33
	0%	0%	0%	0%	0%	0%
grade 2 events	978	747	920	2398	829	4227
	2%	2%	2%	3%	2%	12%
grade 3 events	427	470	415	839	431	1042
	1%	1%	1%	1%	1%	2%
grade 4 events	395	477	380	834	388	1020
	1%	1%	0%	1%	1%	2%
grade 5 events	1083	1152	980	1251	1278	2740
	3%	3%	2%	2%	3%	7%
grade 6 events	634	719	583	807	792	9097
	1%	2%	1%	1%	2%	25%
grade 7 events	28968	27705	33544	31894	31695	15812
	84%	84%	86%	52%	85%	44%

2.2 Compared Parameters

Parameter	Planned	Actual	Parameter	Planned	Actual
Instrument	ACIS	ACIS	Obspar format version number	6	6
Detector	ACIS-012367	ACIS-012367	Obspar file type	PREDICTED	ACTUAL
Grating	NONE	NONE	Obspar update status	NONE	UPDATED
Data mode	VFAINT	VFAINT	On-chip summing requested	N	N
Observation mode	POINTING	POINTING	Subarray requested	NONE	NONE
Pointing RA	15.808696	15.88222196137025	Alternating exposures requested	N	N
Pointing Dec	-72.113402	-72.12888015274123	Primary exposure time	0.000000	3.2
Pointing Roll	295.050770	295.3294219098195			
Window start time	181353664.184000	181353664.184000			
Window stop time	189216064.184000	189216064.184000			
SIM focus pos (mm)	-0.782348	-0.7809083437167272			
SIM defocus (mm)	0	0.001439871863259334			
SIM translation stage pos (mm)	-233.592463	-233.5874344608287			
SIM translation stage offset (mm)	0	-0.005018542100998502			
Observation start time	188225177.184000	188224801.7511			
Observation start date	2003-12-19T12:45:13	2003-12-19T12:40:01			
Observation end time	188233090.184000	188233225.20146			
Observation end date	2003-12-19T14:57:06	2003-12-19T15:00:25			
Read mode	TIMED	TIMED			

2.3 Aspect



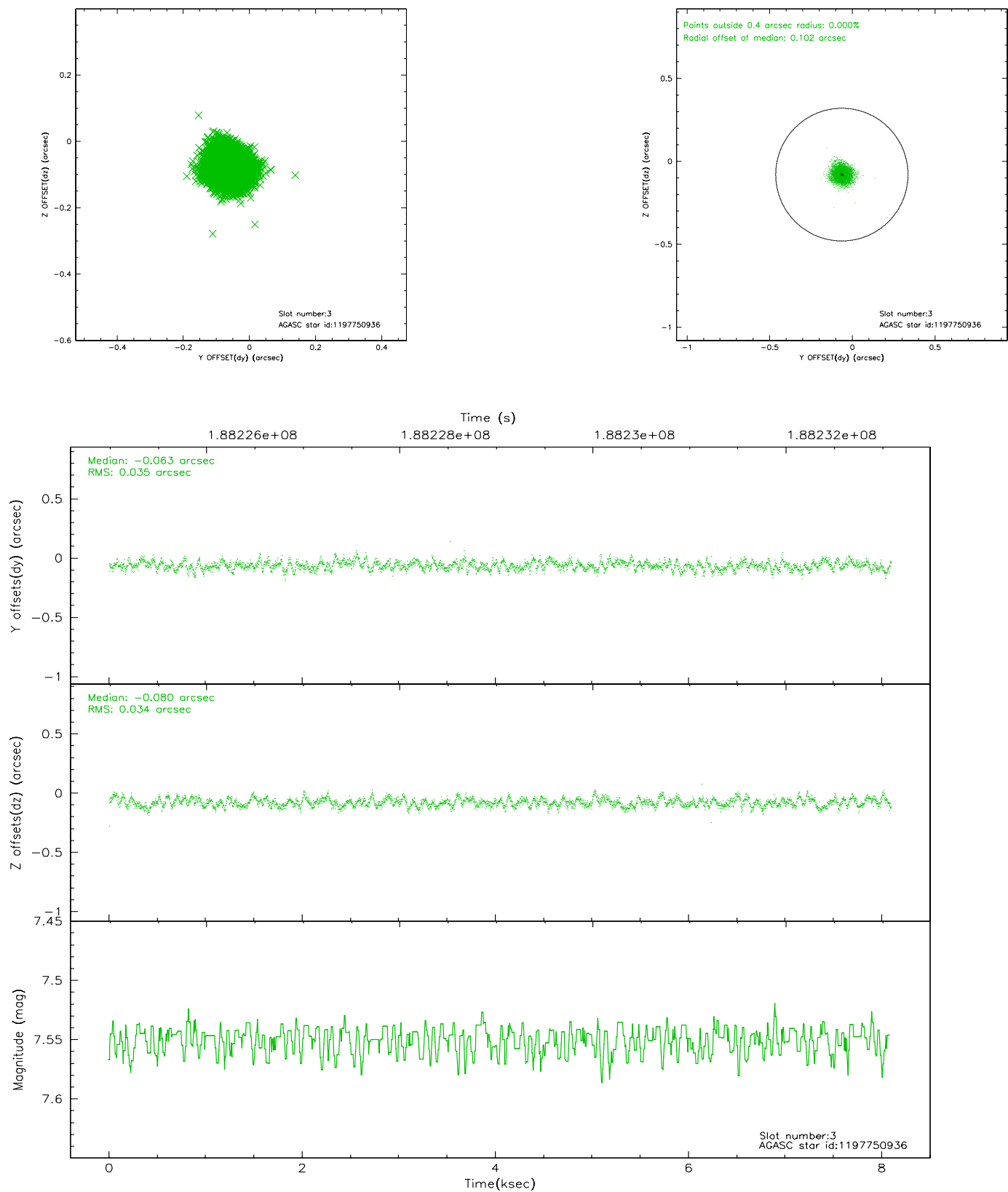


Slot Statistics

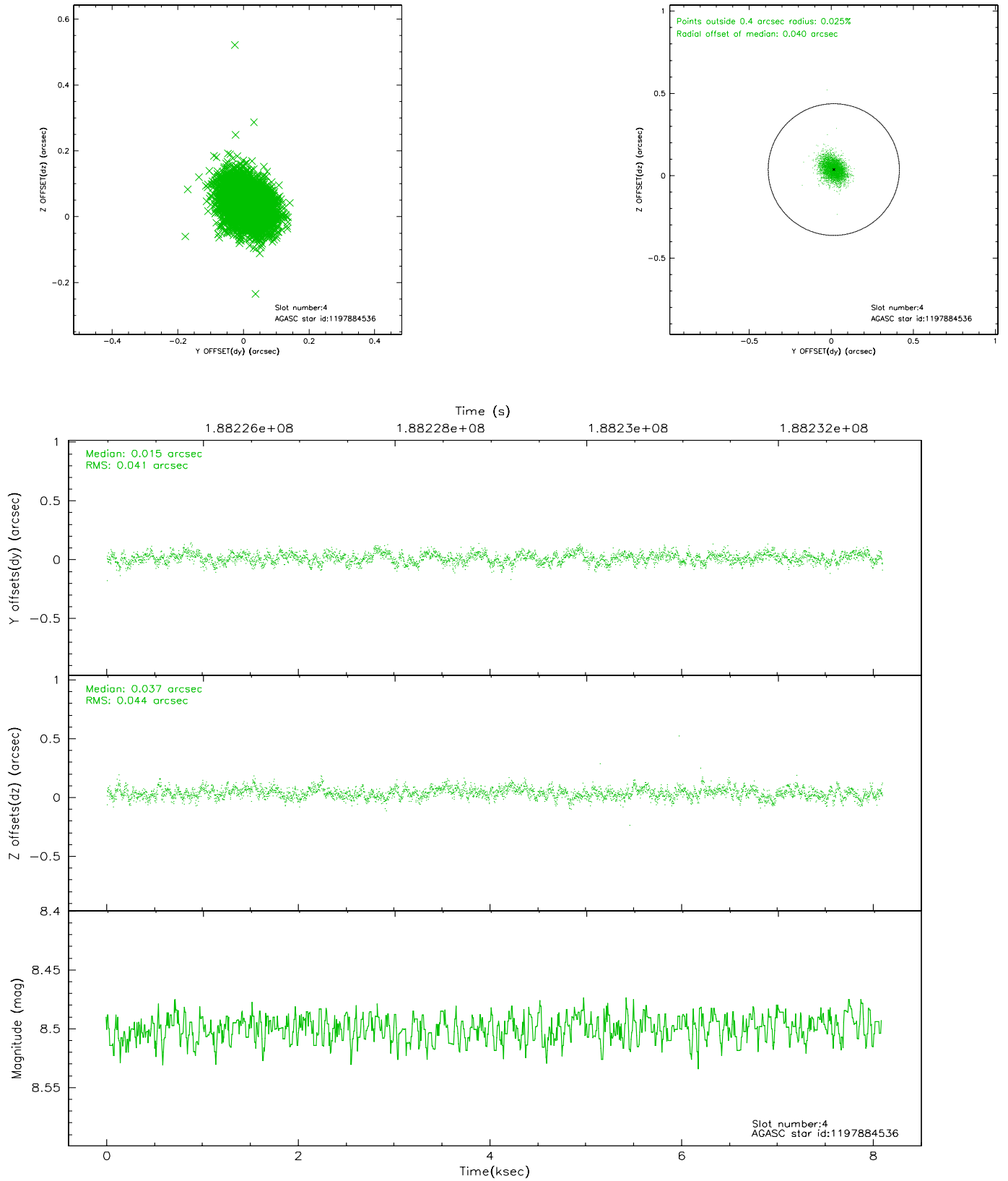
slot	status	id	mag	n_pts	med_dy	med_dz	dr1	dr2	ra	dec	mean_y	mean_z
0	FID	ACIS-I-1	7.24	1975	0.012	0.014	0.006	0.011	0.000000	0.000000	933.65	-833.53
1	FID	ACIS-I-5	7.23	1975	-0.033	0.070	0.007	0.014	0.000000	0.000000	-1814.16	1063.60
2	FID	ACIS-I-6	7.24	1975	-0.071	-0.014	0.008	0.017	0.000000	0.000000	398.30	1708.86
3	GUIDE	1197750936	7.55	3948	-0.063	-0.080	0.053	0.082	15.387940	-71.549550	-2040.15	424.25
4	GUIDE	1197884536	8.50	3948	0.015	0.037	0.063	0.105	17.160729	-71.835289	-249.70	1791.47
5	GUIDE	1197885104	9.36	3946	0.139	0.006	0.083	0.136	17.845067	-72.189368	1231.61	1899.62
6	GUIDE	1197885328	7.23	3949	-0.050	-0.015	0.054	0.092	16.283090	-71.733943	-1008.68	1063.35
7	GUIDE	1198189696	7.37	3948	-0.043	0.053	0.058	0.096	15.223750	-72.697522	1642.75	-1458.44

2.4 Star Slots

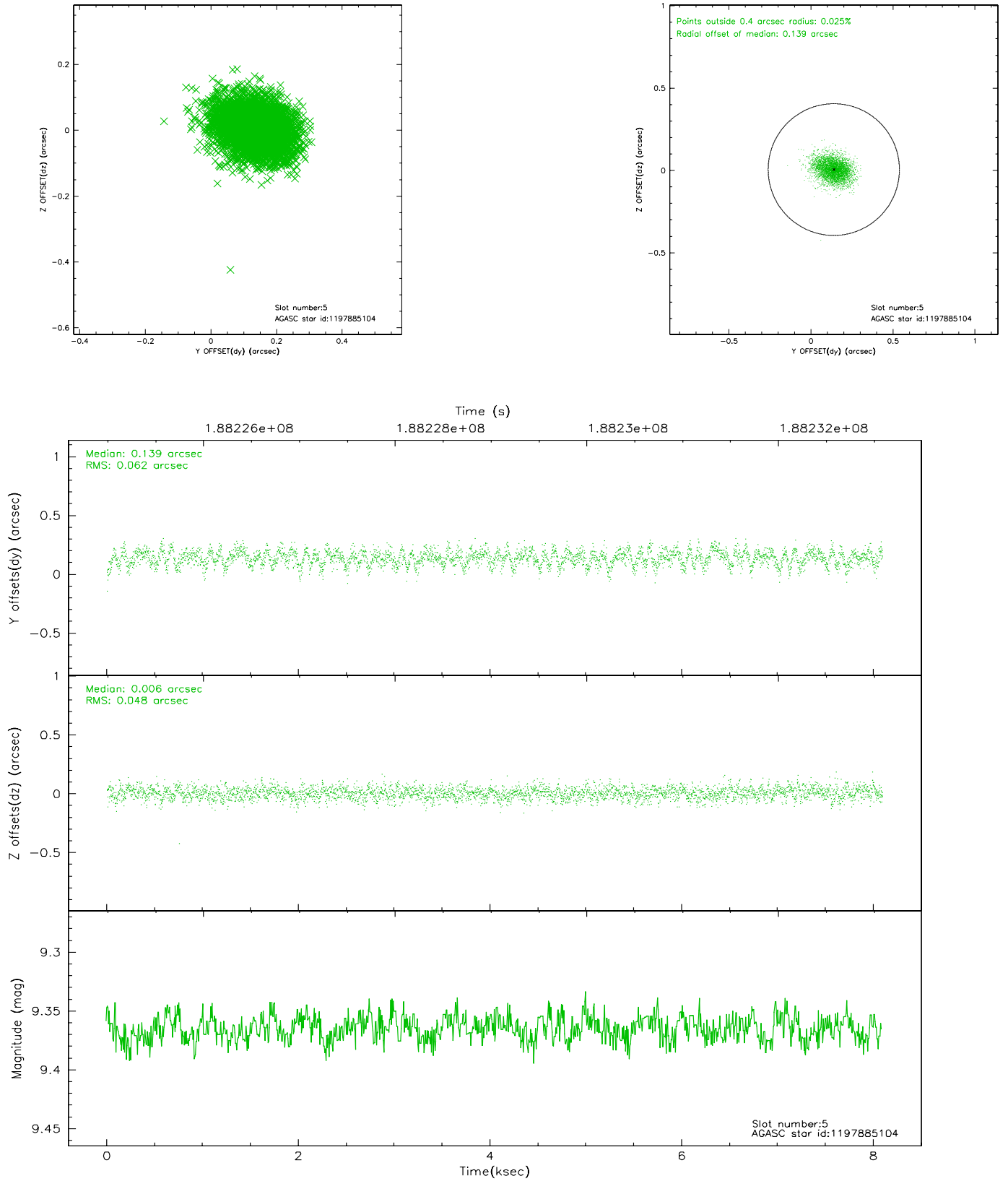
2.4.1 Slot 3



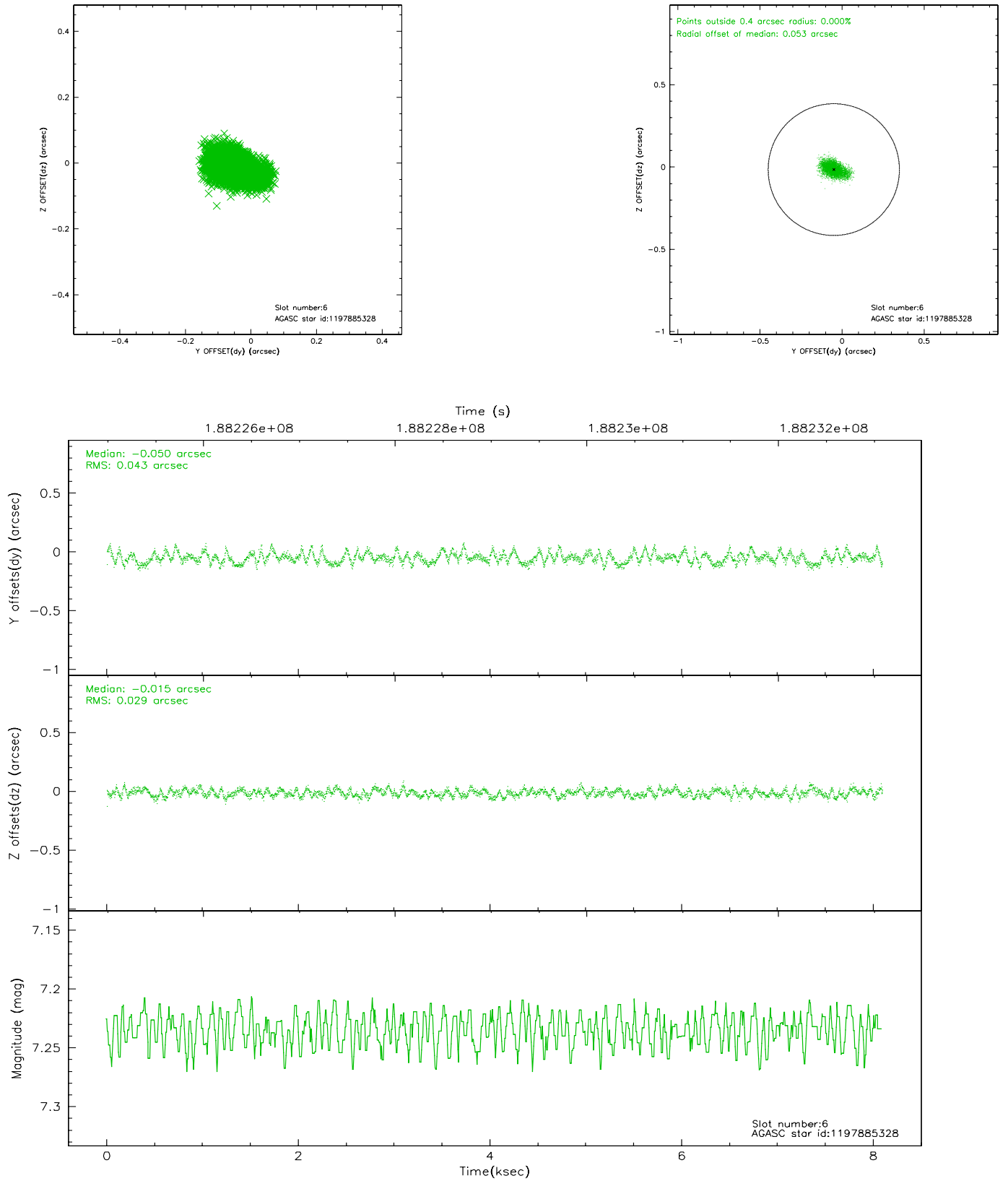
2.4.2 Slot 4



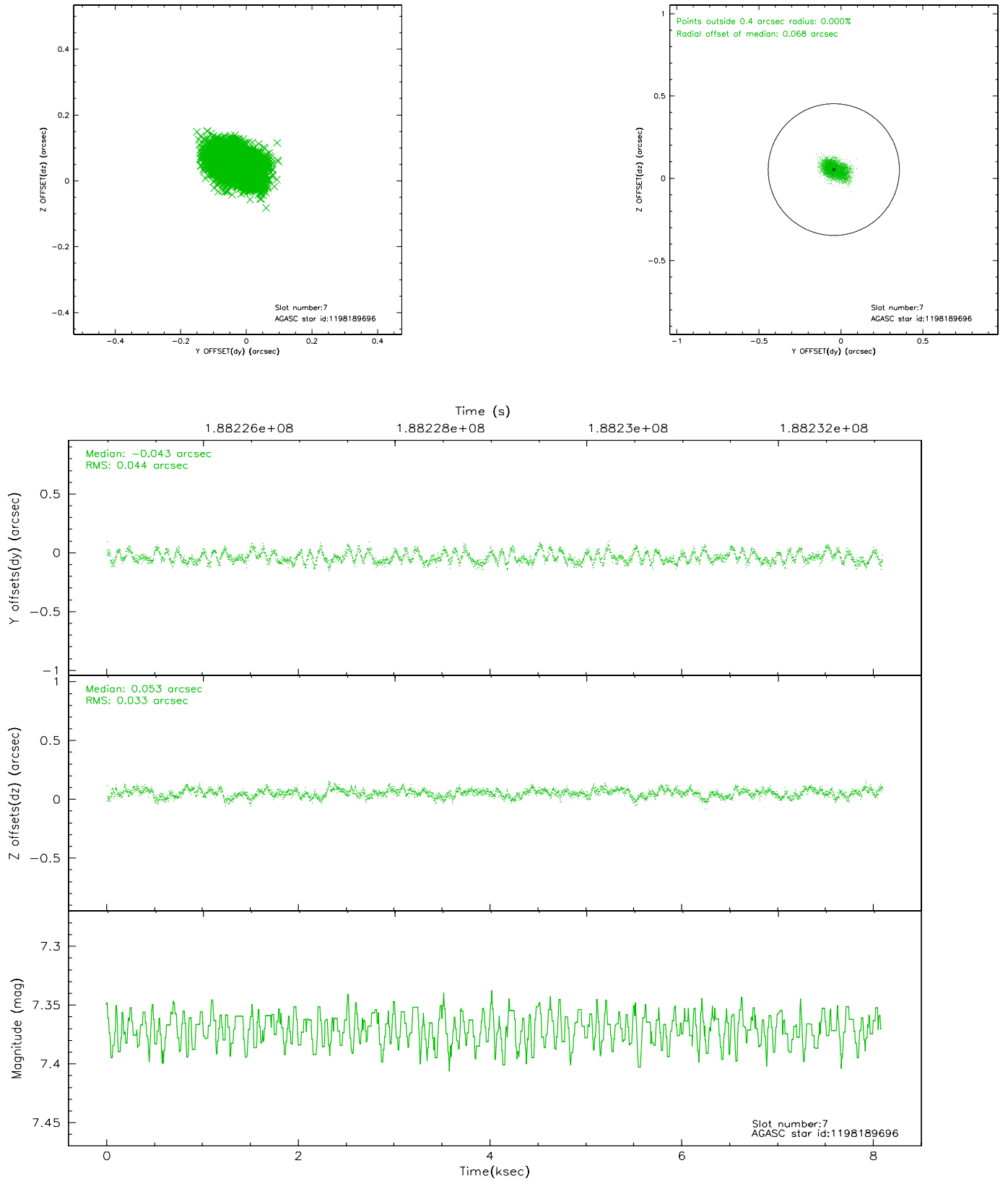
2.4.3 Slot 5



2.4.4 Slot 6

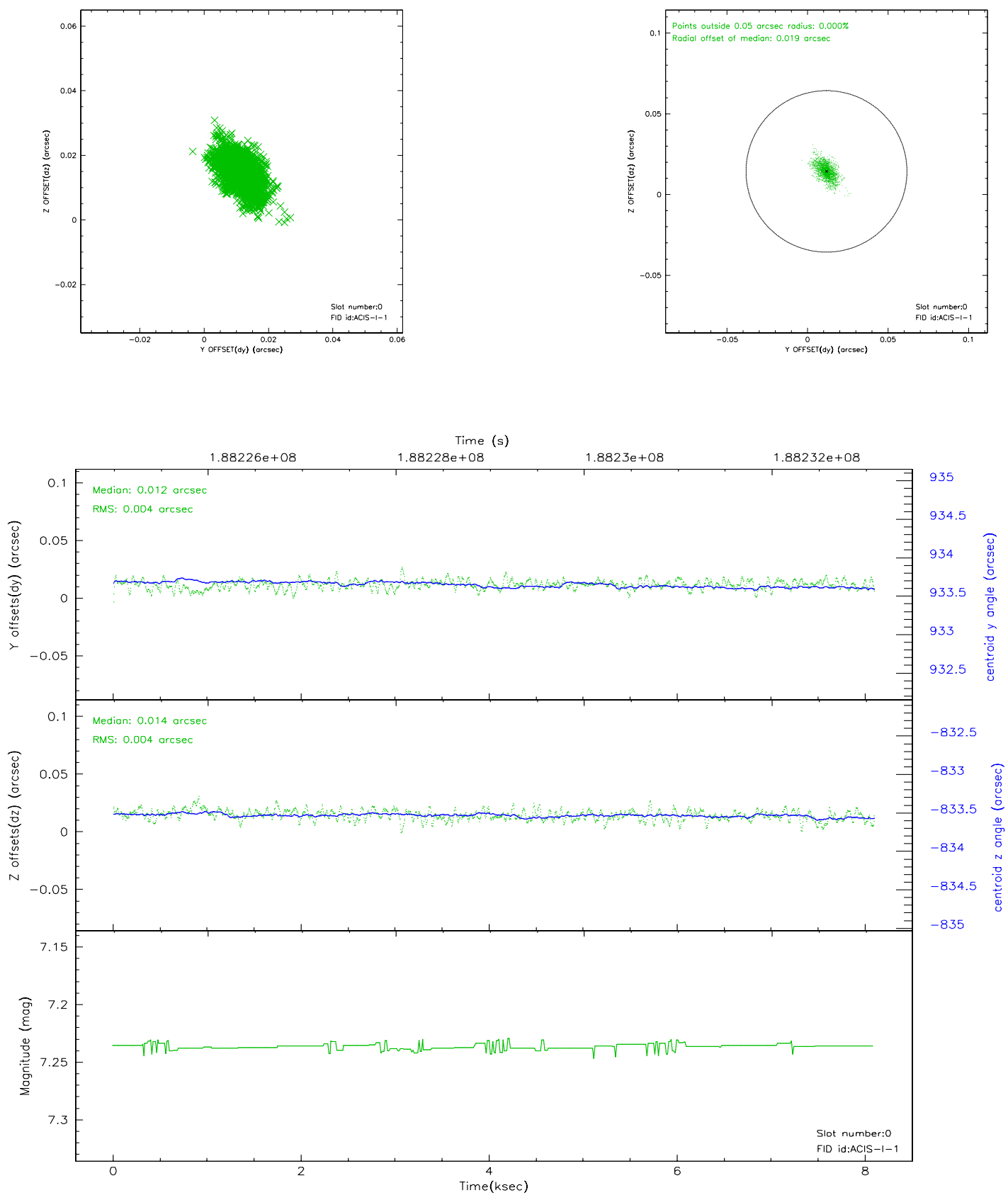


2.4.5 Slot 7

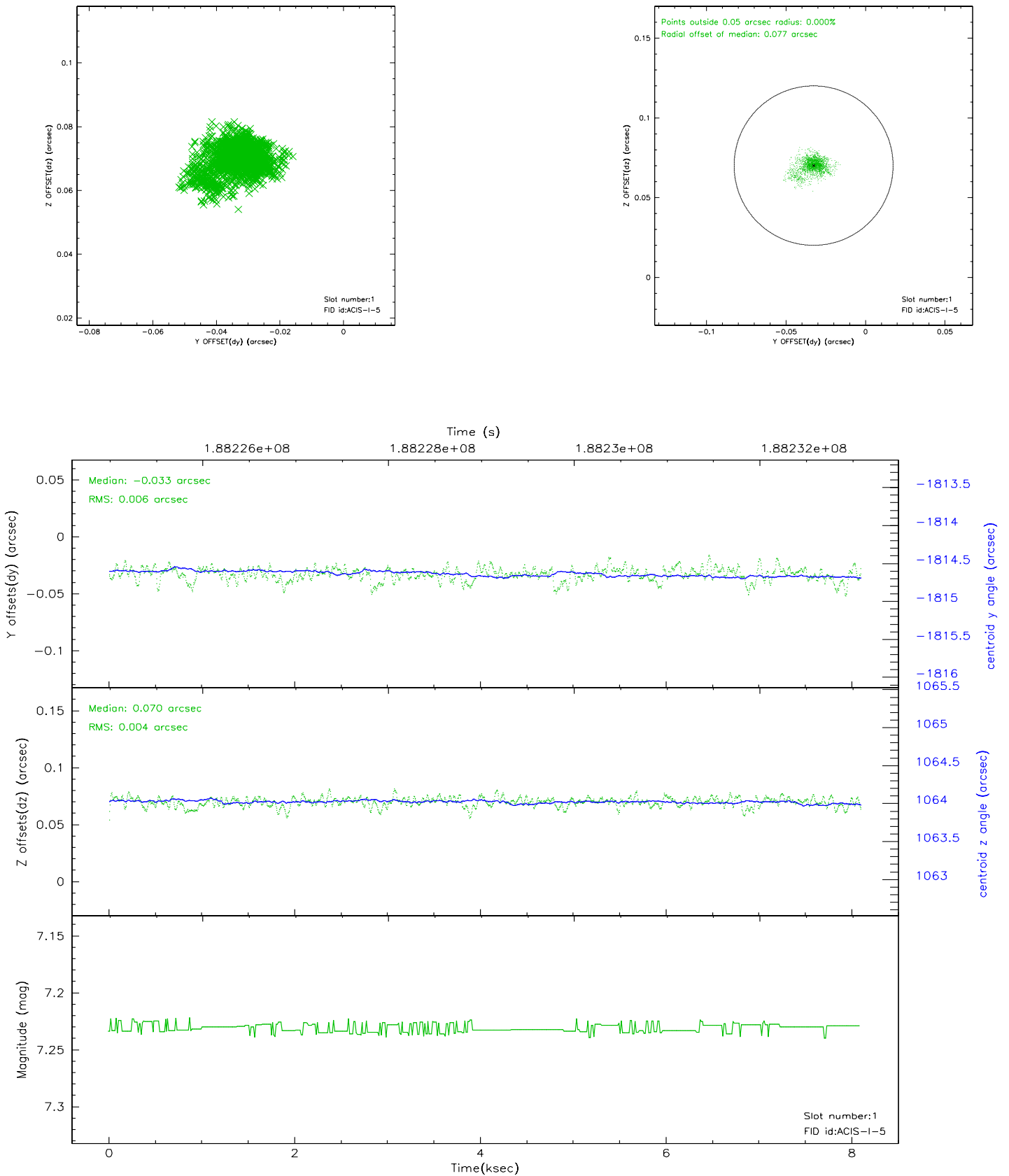


2.5 FID Slots

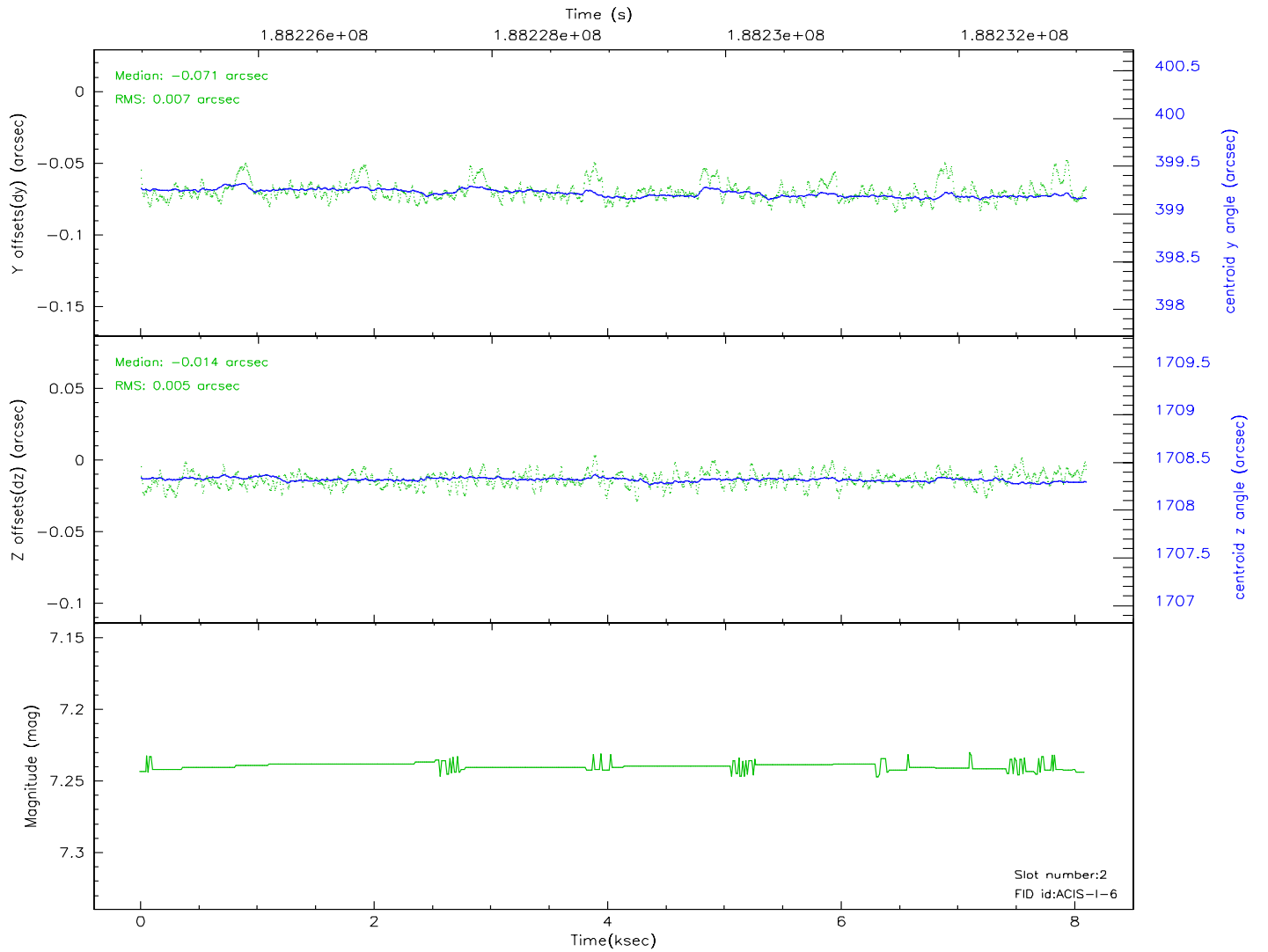
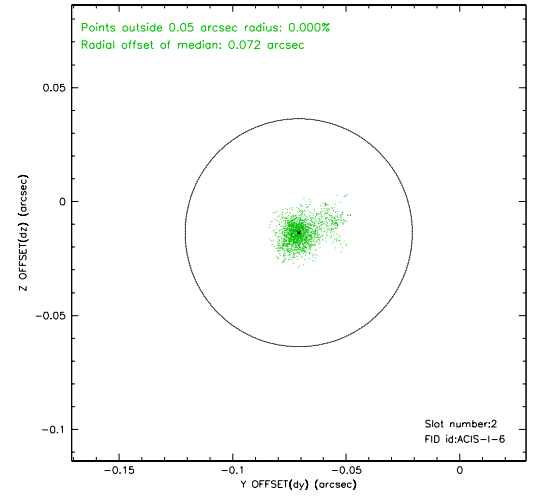
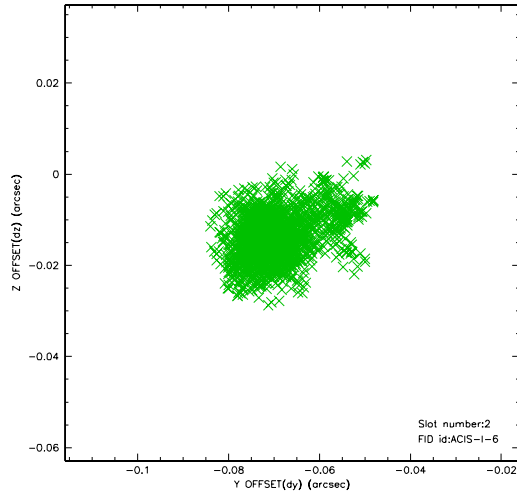
2.5.1 Slot 0



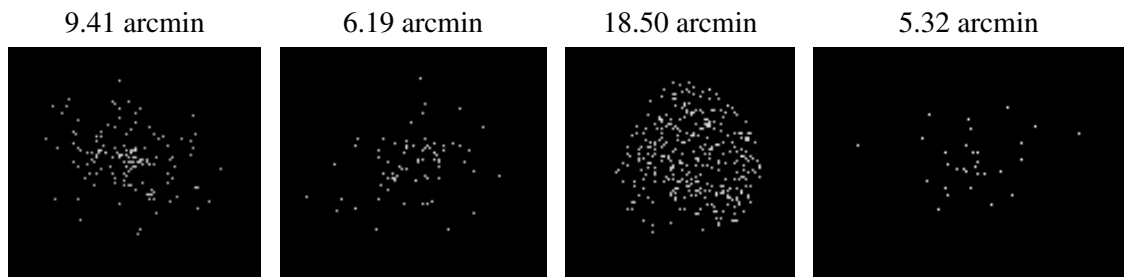
2.5.2 Slot 1



2.5.3 Slot 2



3 Point Sources



A Summary

A.1 Status

V&V Scientist	Jen Lauer
V&V Date (YYYY-MM-DD)	2006.06.22
V&V Edition	1
V&V Disposition and Status	OK
V&V Charge Time	7.673

A.2 Comments

Window constraint met.