

# V&V Reference Report

## L2 ASCDS Version : 7.6.8

Observation 4860 - L2 Version 001  
Chandra X-Ray Center

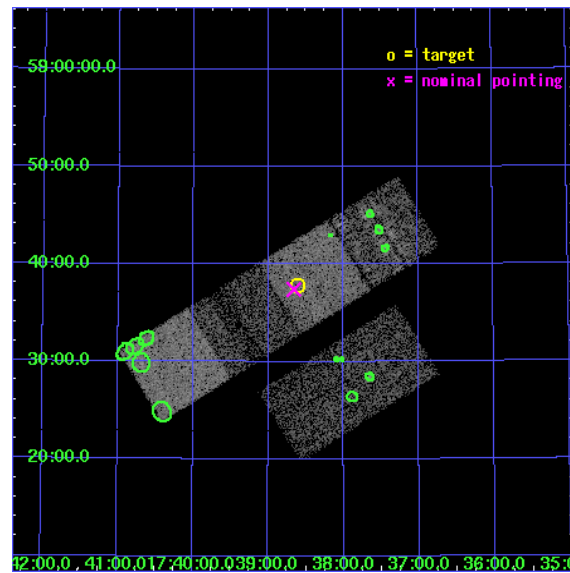
L2 Processing Date : Jun 27 2006

## Contents

<b>1</b>	<b>Front</b>	<b>2</b>
<b>2</b>	<b>OBI</b>	<b>3</b>
2.1	OBI . . . . .	3
2.1.1	Images . . . . .	3
2.1.2	Bias . . . . .	3
2.1.3	Parameters . . . . .	4
2.1.4	Events . . . . .	4
2.2	Compared Parameters . . . . .	5
2.3	Aspect . . . . .	6
2.4	Star Slots . . . . .	9
2.4.1	Slot 3 . . . . .	9
2.4.2	Slot 4 . . . . .	10
2.4.3	Slot 5 . . . . .	11
2.4.4	Slot 6 . . . . .	12
2.4.5	Slot 7 . . . . .	13
2.5	FID Slots . . . . .	14
2.5.1	Slot 0 . . . . .	14
2.5.2	Slot 1 . . . . .	15
2.5.3	Slot 2 . . . . .	16
<b>3</b>	<b>Point Sources</b>	<b>17</b>
<b>A</b>	<b>Summary</b>	<b>18</b>
A.1	Status . . . . .	18
A.2	Comments . . . . .	18

# 1 Front

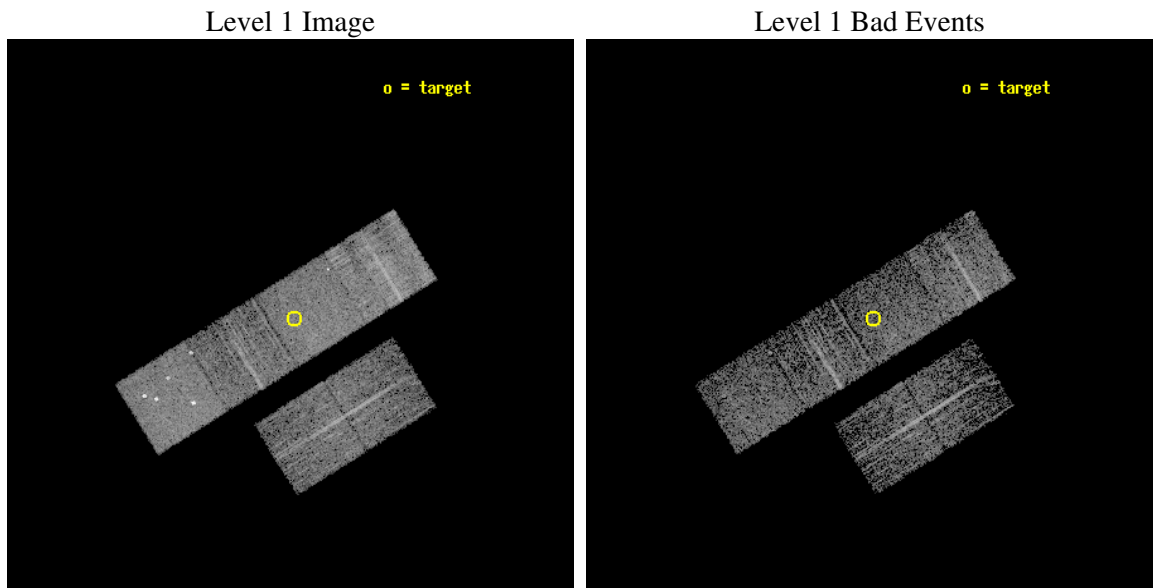
seq_num	700942
obs_id	4860
title	X-ray Properties of Dust Reddened Quasars from the Sloan Digital Sky Survey
observer	Gordon Richards
object	SDSS J173836.15+583748.5
dtcycle	0
cycle	P
ra_targ	264.650833
dec_targ	58.630139
ra_nom	264.66462706187
dec_nom	58.623727034567
roll_nom	328.10304564956
revision	2
ontime	3923.1999853849
livetime	3873.5220649026
ontime2	3923.1999853849
ontime3	3923.1999853849
ontime5	3923.1999853849
ontime6	3923.1999853849
ontime7	3923.1999853849
ontime8	3919.9590151012
l2events	45874



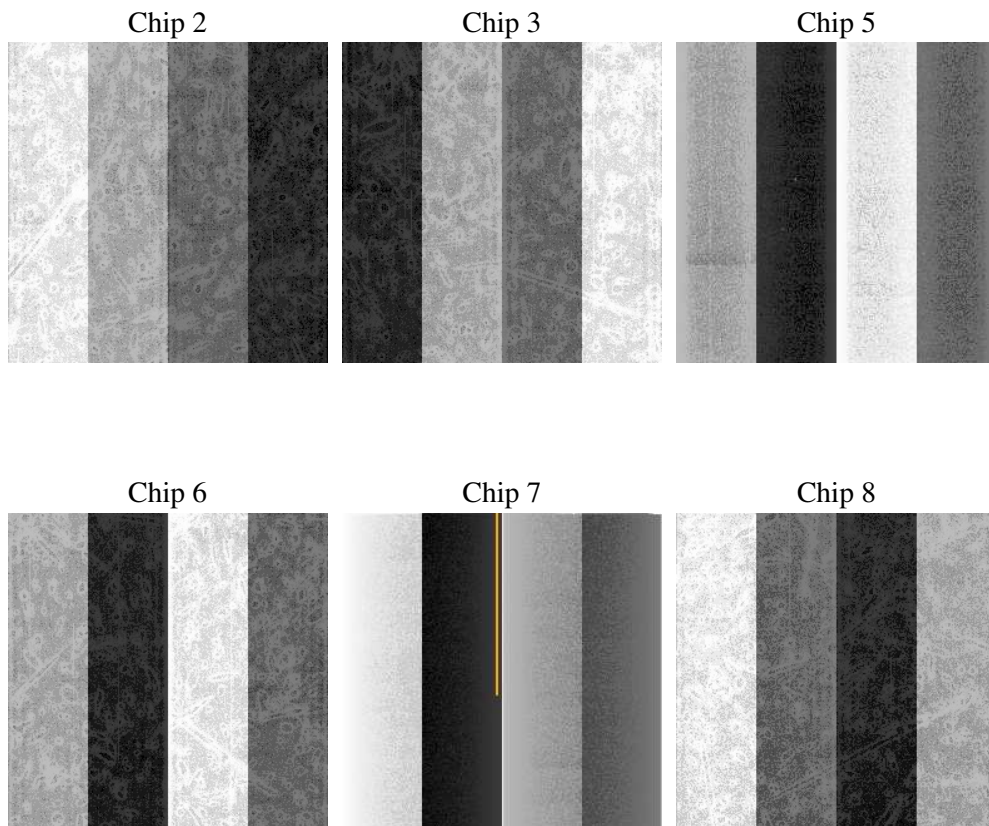
## 2 OBI

### 2.1 OBI

#### 2.1.1 Images



#### 2.1.2 Bias



### 2.1.3 Parameters

obi_num	0
ascdsver	7.6.8
caldsver	3.2.2
date	2006-06-28T00:48:16
revision	2

sched_exp_time	4170.000000
ontime	3928.0929800868
ontime2	3928.0929999948
ontime3	3931.3339901567
ontime5	3928.0929800868
ontime6	3928.0929800868
ontime7	3928.0929800868
ontime8	3928.0929202139
l1events	175984

### 2.1.4 Events

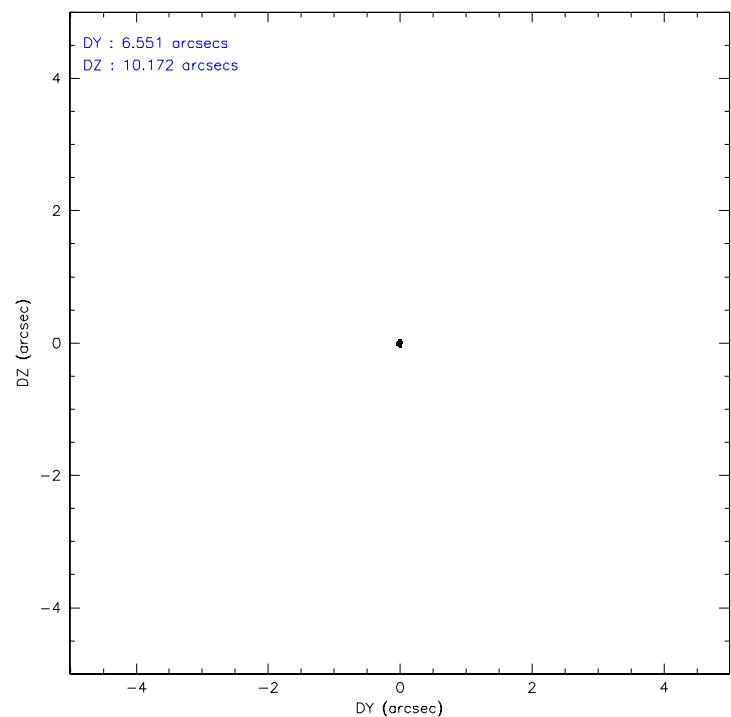
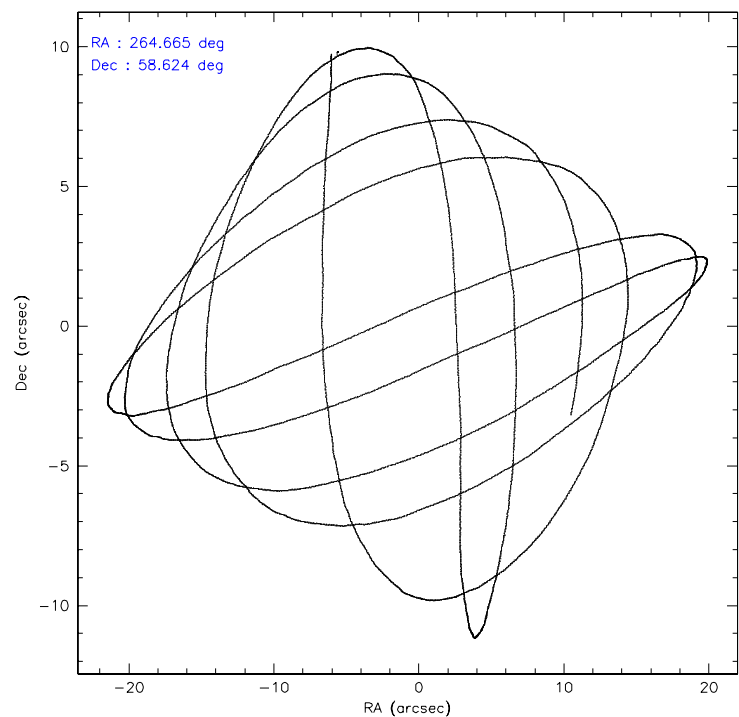
	ccd 2	ccd 3	ccd 5	ccd 6	ccd 7	ccd 8
level 1 events	23625	21576	36717	23842	31116	39108
rejected events	19203	16949	18271	19217	18134	24682
rejected %	81%	78%	49%	80%	58%	63%

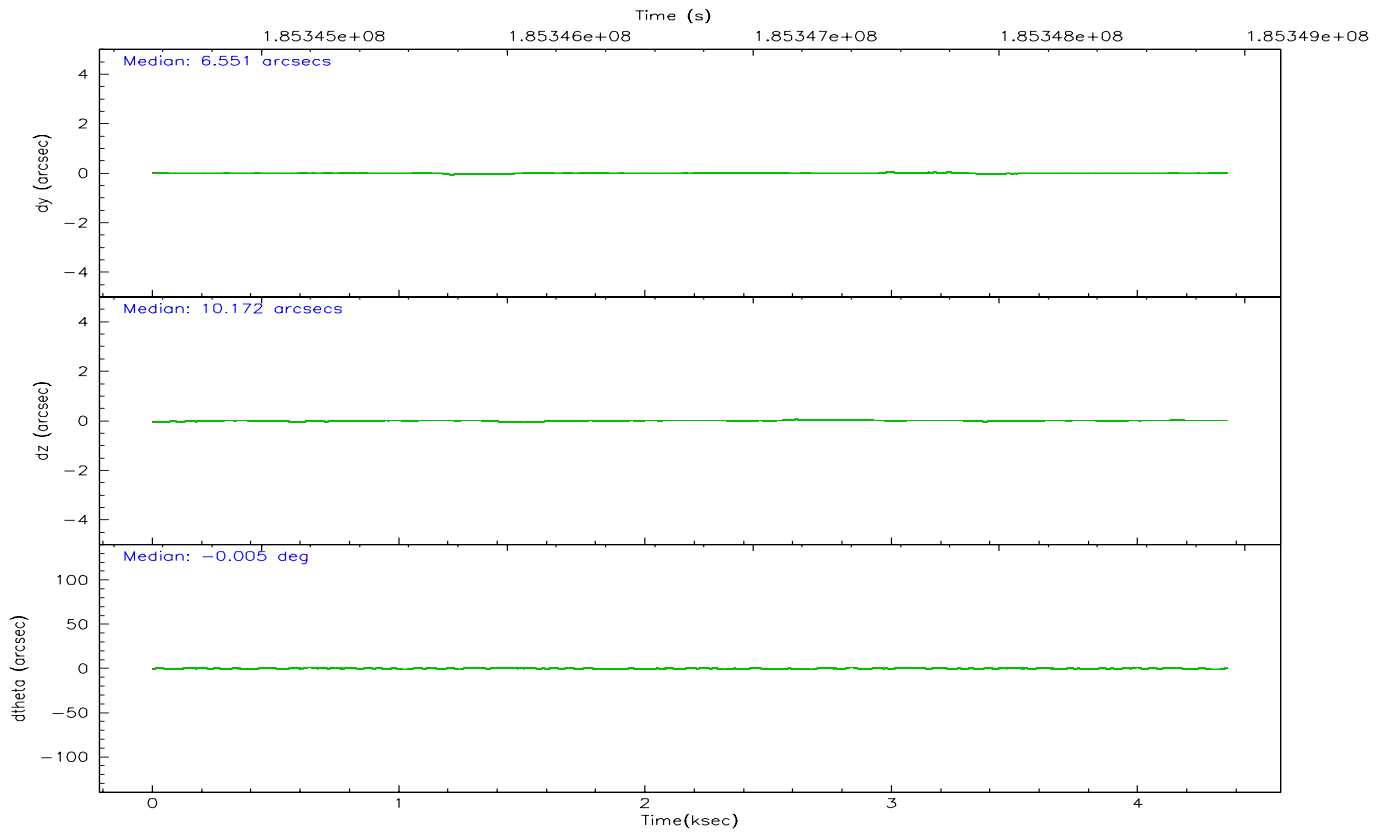
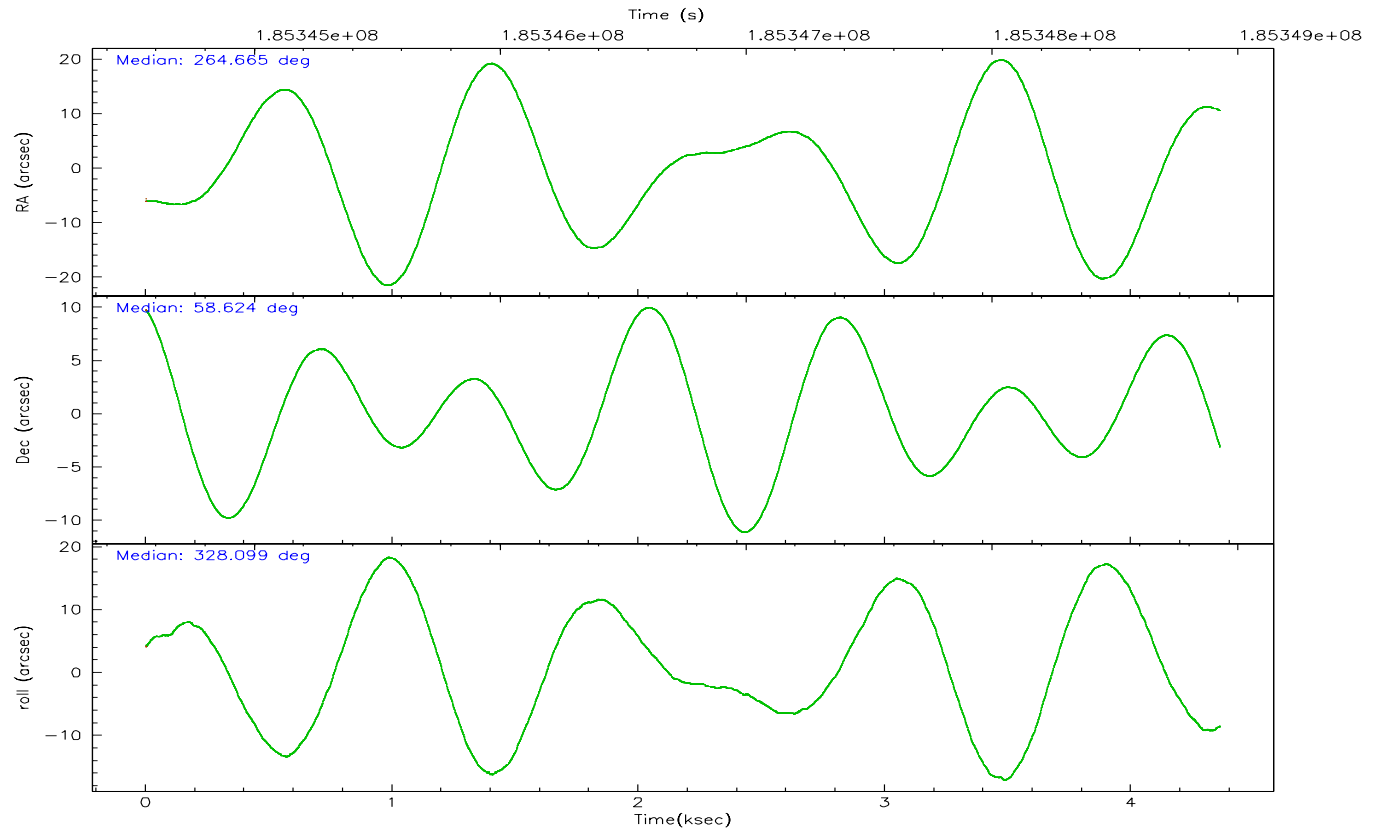
	ccd 2	ccd 3	ccd 5	ccd 6	ccd 7	ccd 8
grade 0 events	2052	2038	3491	1919	939	5695
	8%	9%	9%	8%	3%	14%
grade 1 events	12	11	115	10	22	55
	0%	0%	0%	0%	0%	0%
grade 2 events	964	1178	5406	1294	3272	2322
	4%	5%	14%	5%	10%	5%
grade 3 events	261	244	508	282	703	2032
	1%	1%	1%	1%	2%	5%
grade 4 events	299	292	460	269	652	1860
	1%	1%	1%	1%	2%	4%
grade 5 events	819	822	1576	945	1918	1303
	3%	3%	4%	3%	6%	3%
grade 6 events	848	884	8596	864	7429	2532
	3%	4%	23%	3%	23%	6%
grade 7 events	18370	16107	16565	18259	16181	23309
	77%	74%	45%	76%	52%	59%

## 2.2 Compared Parameters

Parameter	Planned	Actual	Parameter	Planned	Actual
Instrument	ACIS	ACIS	Obspar format version number	6	6
Detector	ACIS-235678	ACIS-235678	Obspar file type	PREDICTED	ACTUAL
Grating	NONE	NONE	Obspar update status	NONE	UPDATED
Data mode	FAINT	FAINT	On-chip summing requested	N	N
Observation mode	POINTING	POINTING	Subarray requested	NONE	NONE
Pointing RA	264.612342	264.6646270618675	Alternating exposures requested	N	N
Pointing Dec	58.624186	58.62372703456746	Primary exposure time	0.000000	3.2
Pointing Roll	327.991067	328.1030456495608			
SIM focus pos (mm)	-0.684267	-0.6828225247311905			
SIM defocus (mm)	0	0.001444936568705701			
SIM translation stage pos (mm)	-190.132523	-190.1400660498719			
SIM translation stage offset (mm)	0	0.00754346686406393			
Observation start time	185344754.184000	185344284.61367			
Observation start date	2003-11-16T04:38:10	2003-11-16T04:31:24			
Observation end time	185348924.184000	185349170.78888			
Observation end date	2003-11-16T05:47:40	2003-11-16T05:52:50			
Read mode	TIMED	TIMED			

2.3 Aspect





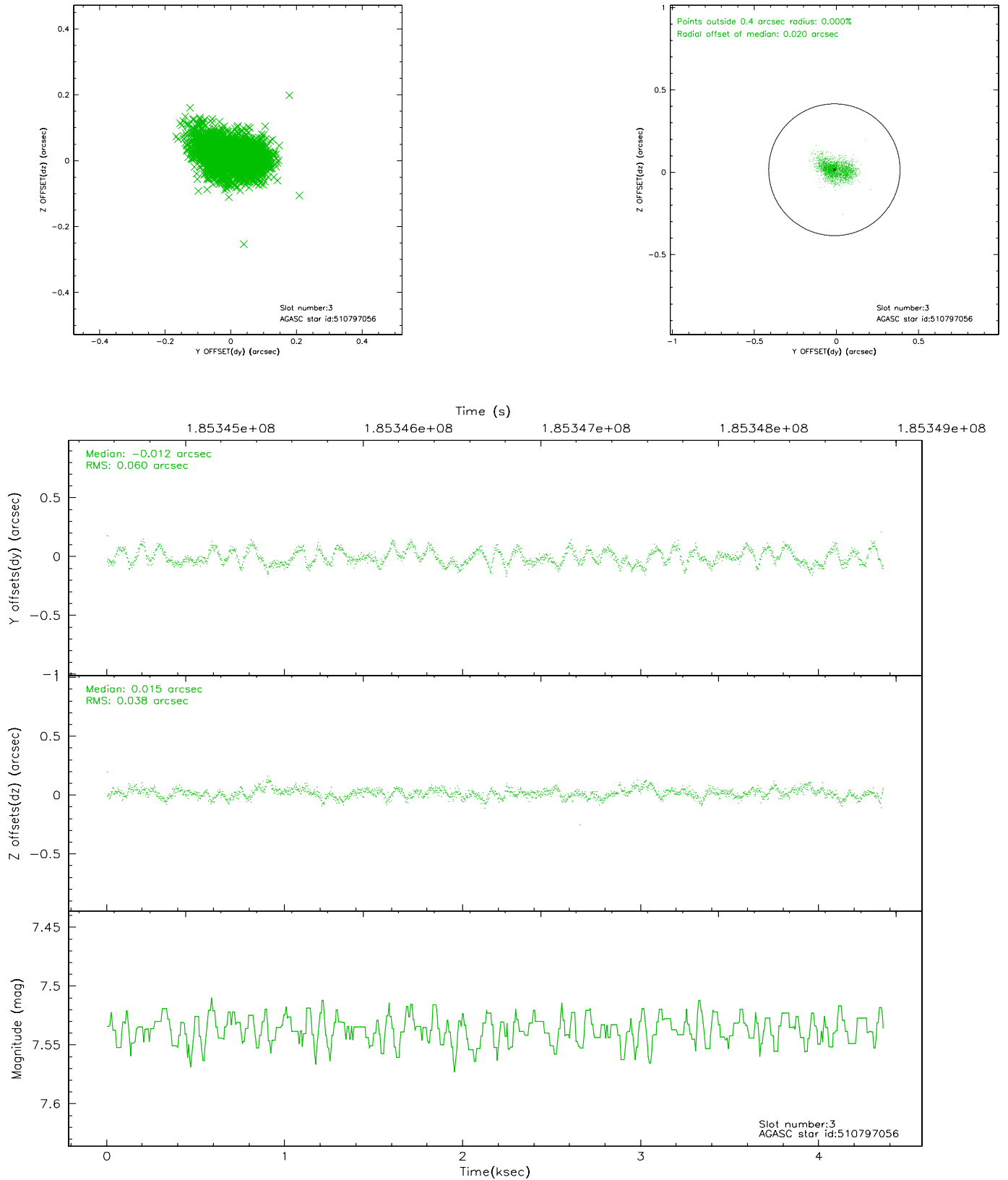
### Slot Statistics

slot	status	id	mag	n_pts	med_dy	med_dz	dr1	dr2	ra	dec	mean_y	mean_z
0	FID	ACIS-S-2	7.10	1064	-0.048	0.004	0.006	0.011	0.000000	0.000000	-759.31	-1731.43
1	FID	ACIS-S-4	7.20	1064	0.028	0.022	0.004	0.008	0.000000	0.000000	2153.37	175.65
2	FID	ACIS-S-5	7.23	1064	-0.011	-0.017	0.006	0.010	0.000000	0.000000	-1810.32	170.83
3	GUIDE	510797056	7.54	2128	-0.012	0.015	0.078	0.123	265.128475	57.857593	2299.65	-1812.69
4	GUIDE	511189344	9.52	2126	-0.008	0.079	0.082	0.136	263.131545	58.437038	-2023.68	-2025.01
5	GUIDE	511313408	8.34	2127	-0.032	-0.062	0.061	0.101	265.715436	58.685119	1624.52	1293.39
6	GUIDE	511314128	9.32	2128	0.081	0.029	0.075	0.120	263.451193	58.779394	-2142.08	-658.18
7	GUIDE	511315160	8.40	2127	-0.032	-0.063	0.079	0.136	264.176491	59.502240	-2353.10	2259.80

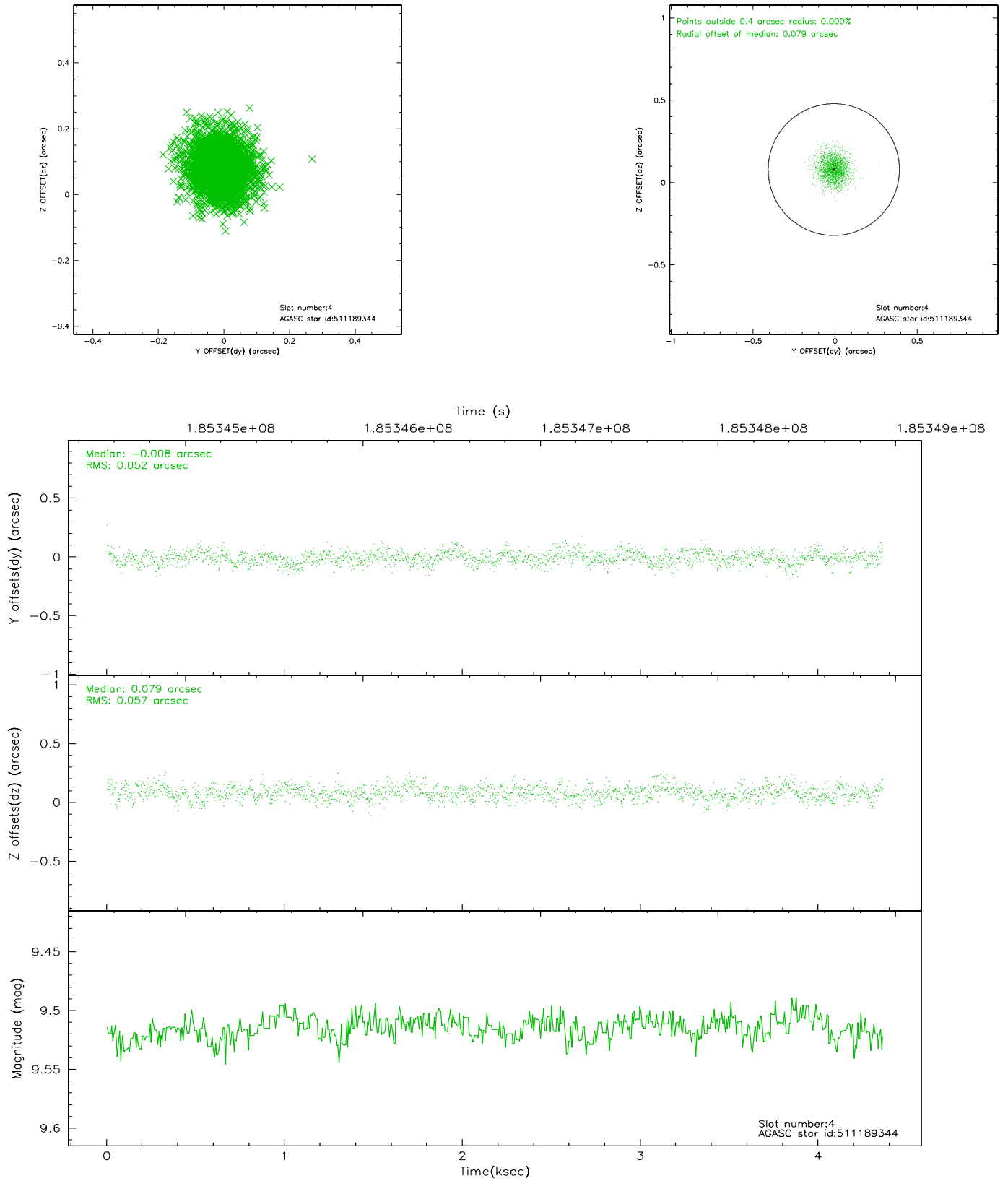


## 2.4 Star Slots

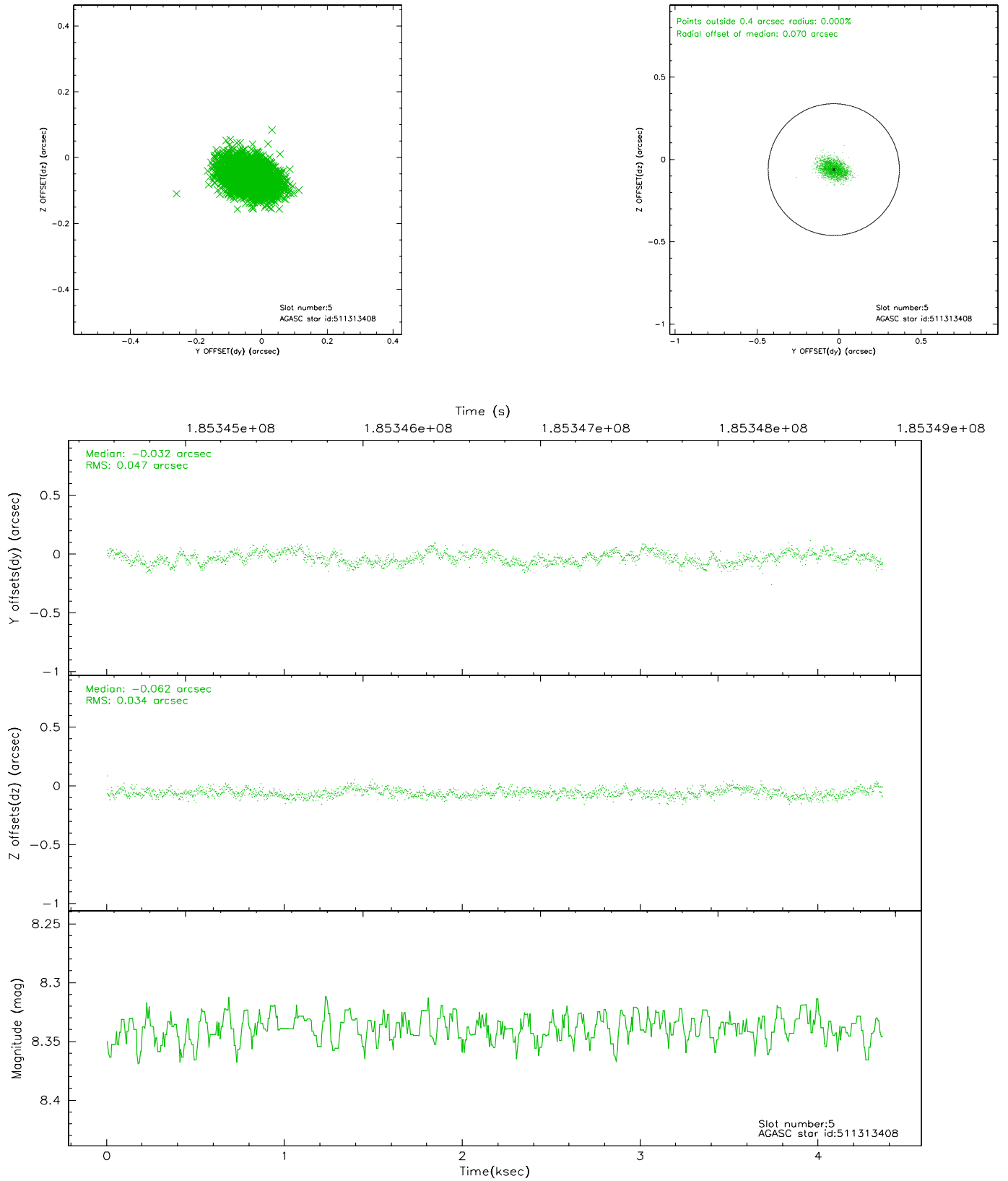
### 2.4.1 Slot 3



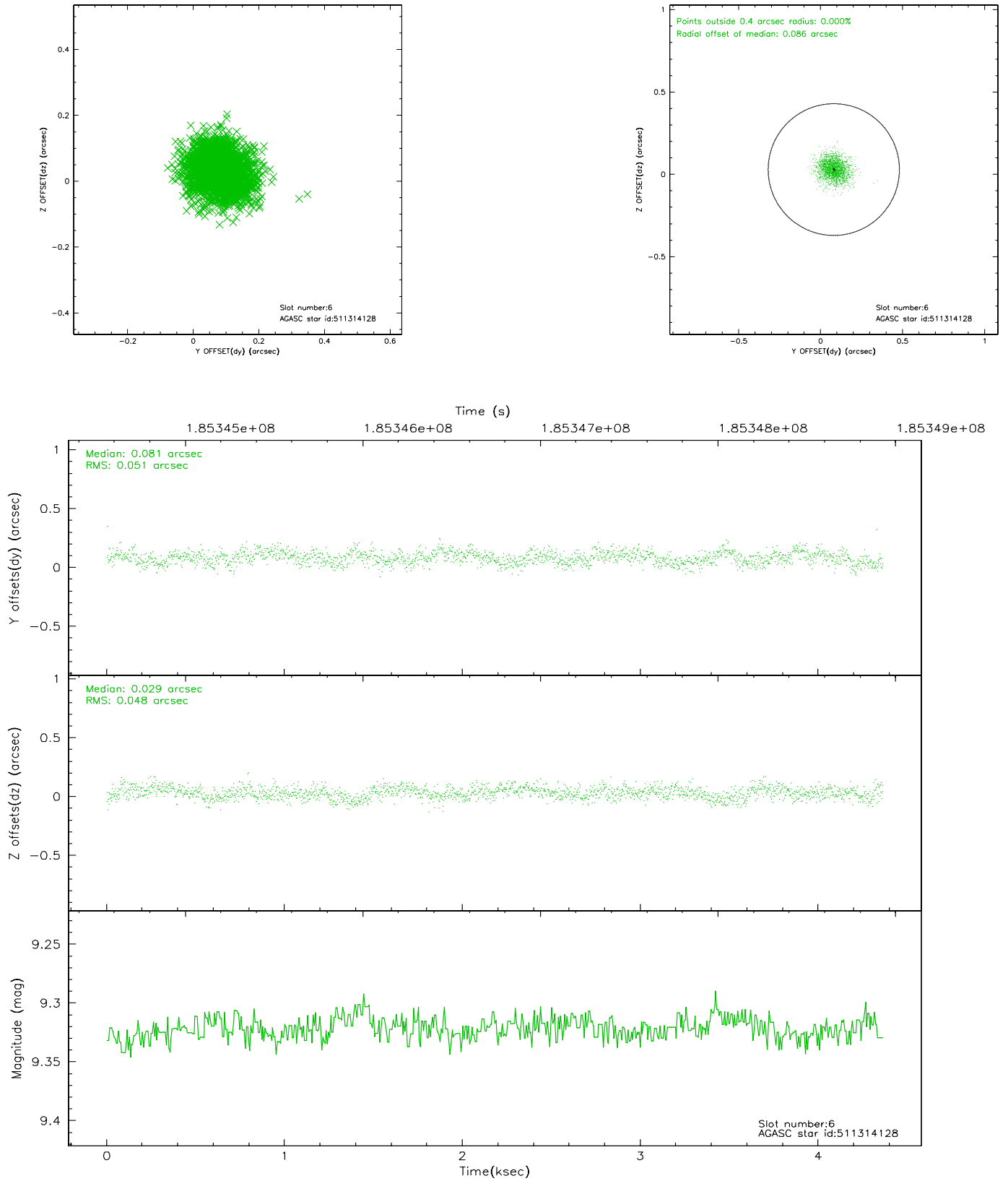
## 2.4.2 Slot 4



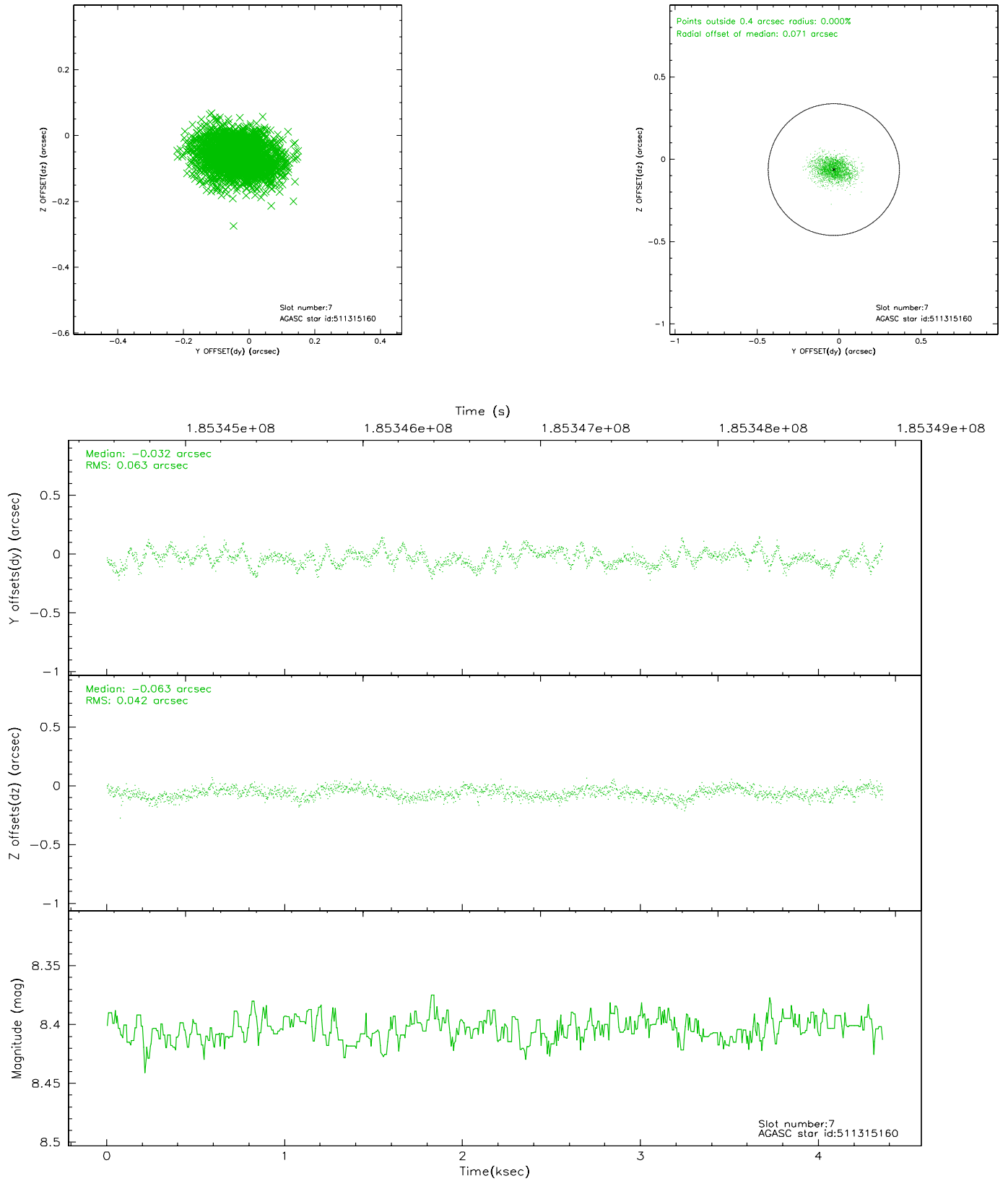
### 2.4.3 Slot 5



## 2.4.4 Slot 6

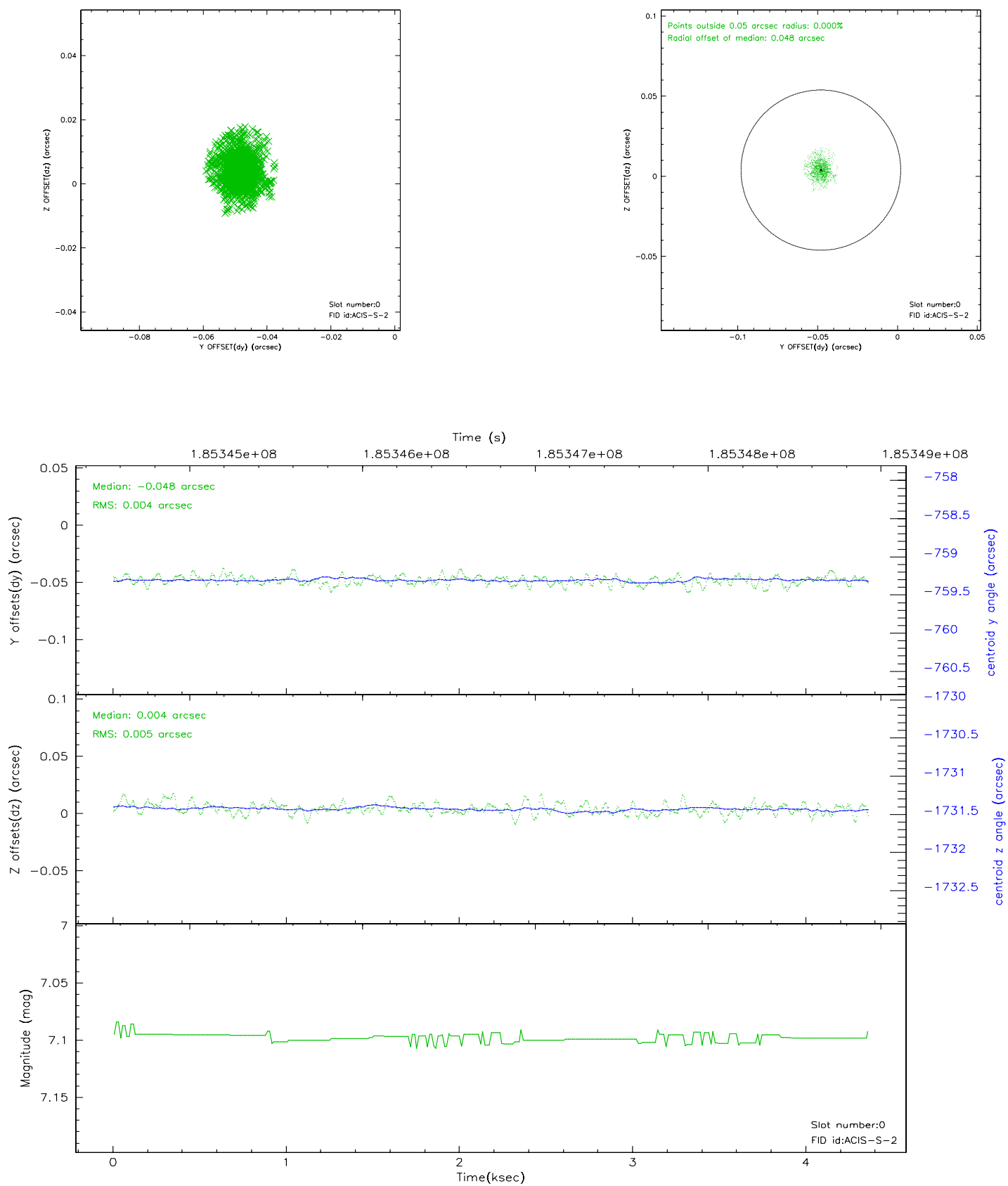


## 2.4.5 Slot 7

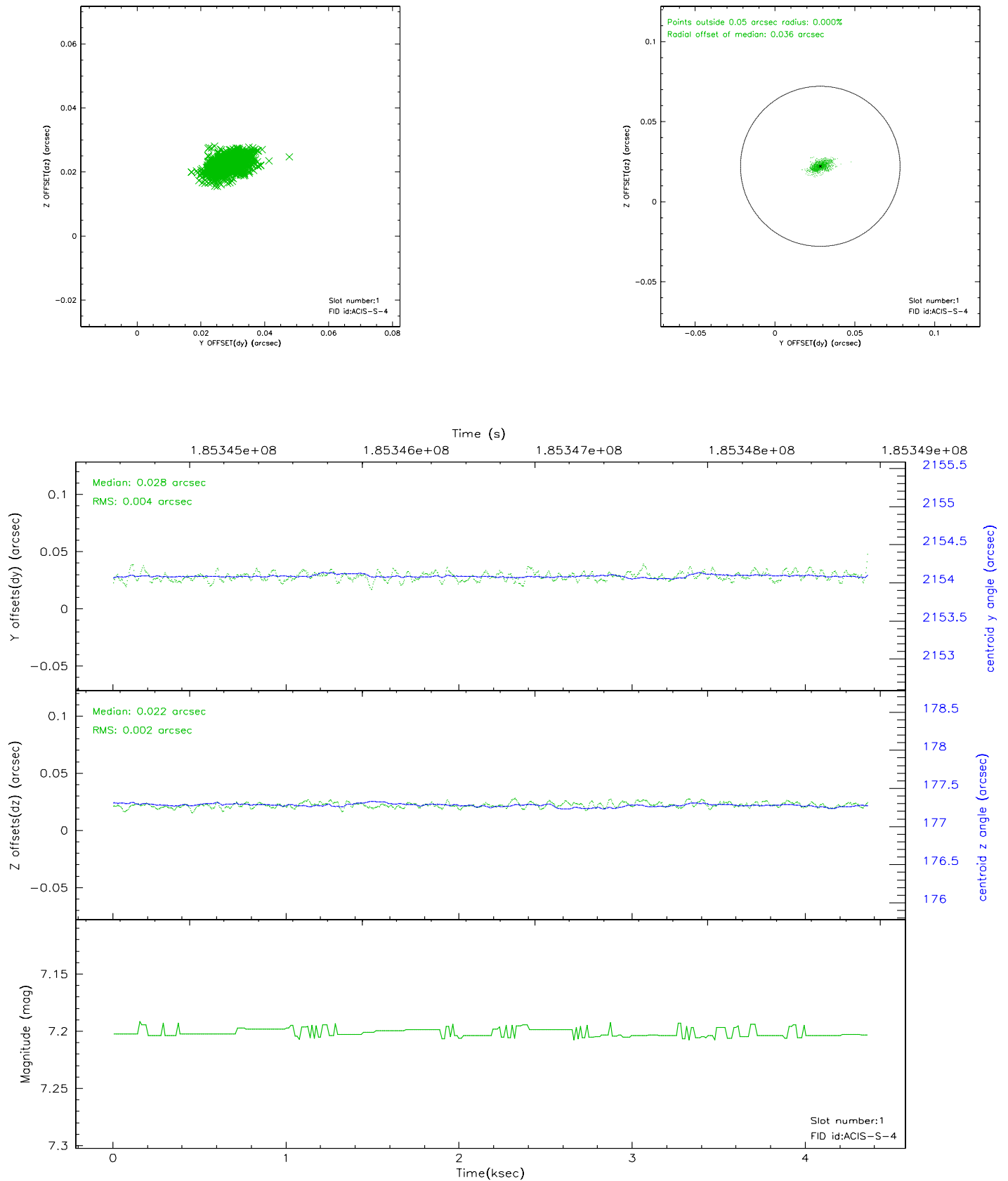


## 2.5 FID Slots

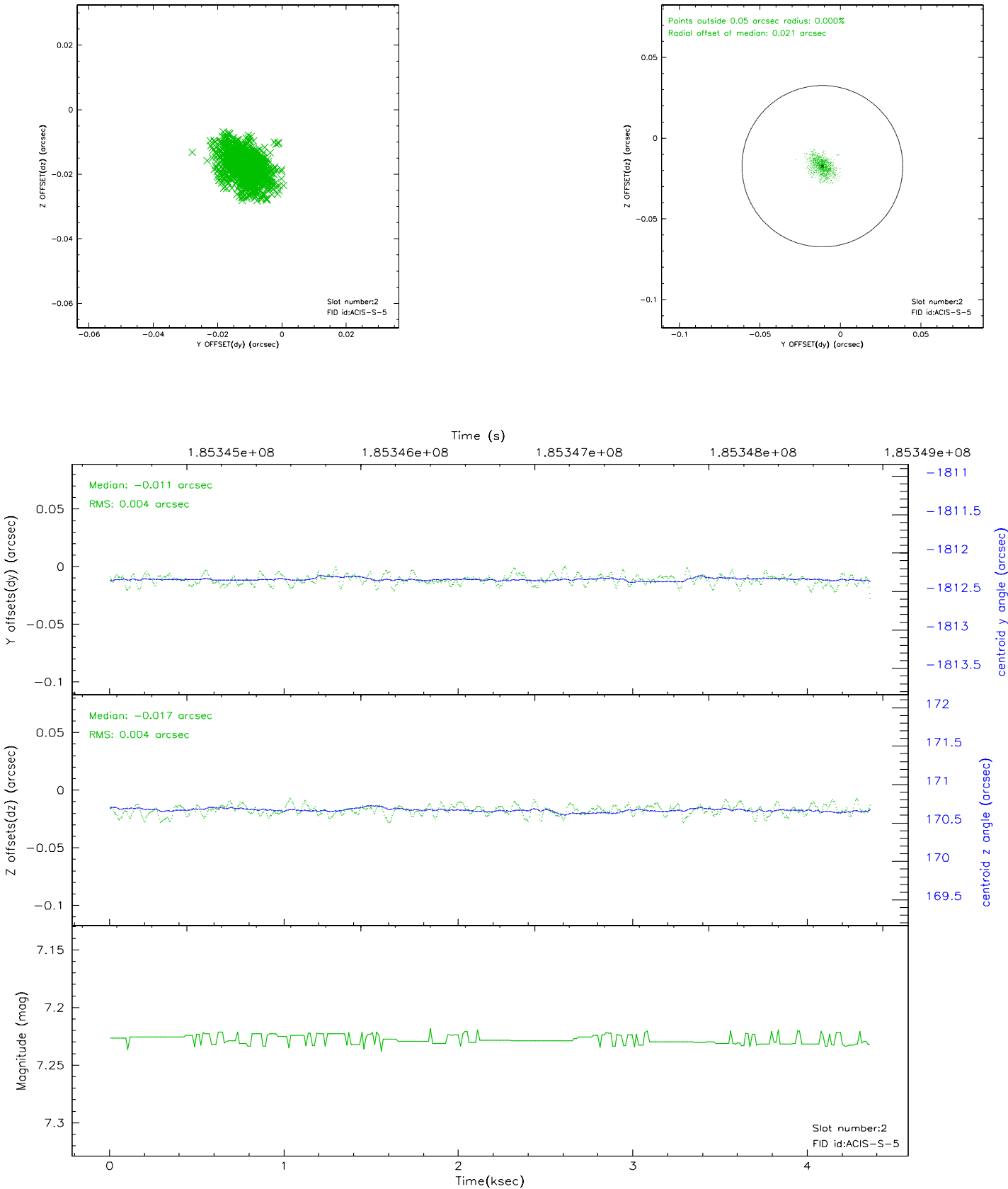
### 2.5.1 Slot 0



## 2.5.2 Slot 1

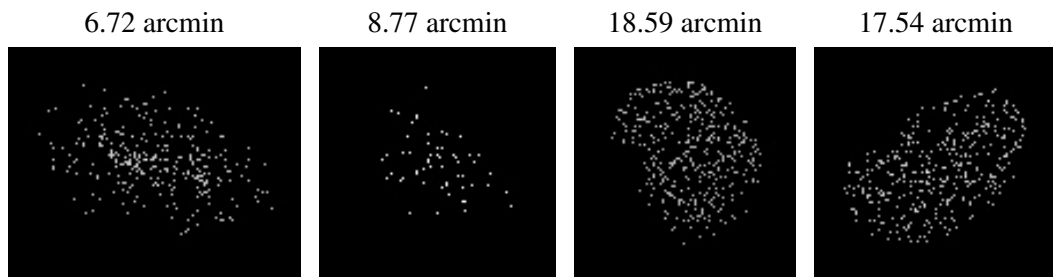


2.5.3 Slot 2





### 3 Point Sources



## A Summary

### A.1 Status

V&V Scientist	Beth Sundheim
V&V Date (YYYY-MM-DD)	2006.06.28
V&V Edition	1
V&V Disposition and Status	OK
V&V Charge Time	3.923

### A.2 Comments