

V&V Reference Report

L2 ASCDS Version : 7.6.7.1

Observation 4710 - L2 Version 001
Chandra X-Ray Center

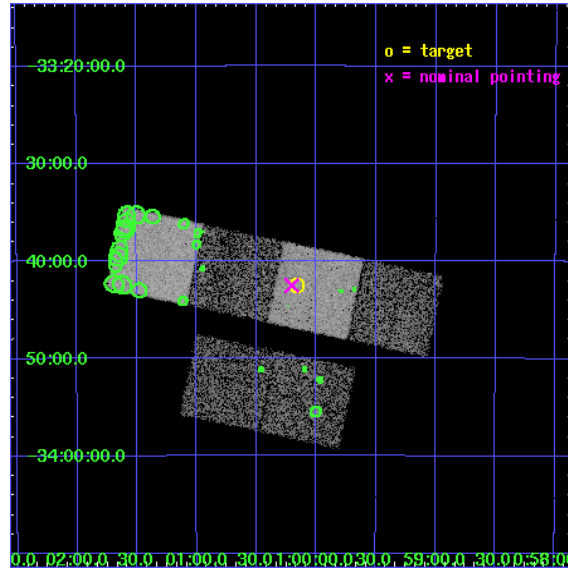
L2 Processing Date : Apr 16 2006

Contents

1	Front	2
2	OBI	3
2.1	OBI	3
2.1.1	Images	3
2.1.2	Bias	3
2.1.3	Parameters	4
2.1.4	Events	4
2.2	Compared Parameters	5
2.3	Aspect	6
2.4	Star Slots	9
2.4.1	Slot 3	9
2.4.2	Slot 4	10
2.4.3	Slot 5	11
2.4.4	Slot 6	12
2.4.5	Slot 7	13
2.5	FID Slots	14
2.5.1	Slot 0	14
2.5.2	Slot 1	15
2.5.3	Slot 2	16
3	Point Sources	17
A	Summary	18
A.1	Status	18
A.2	Comments	18

1 Front

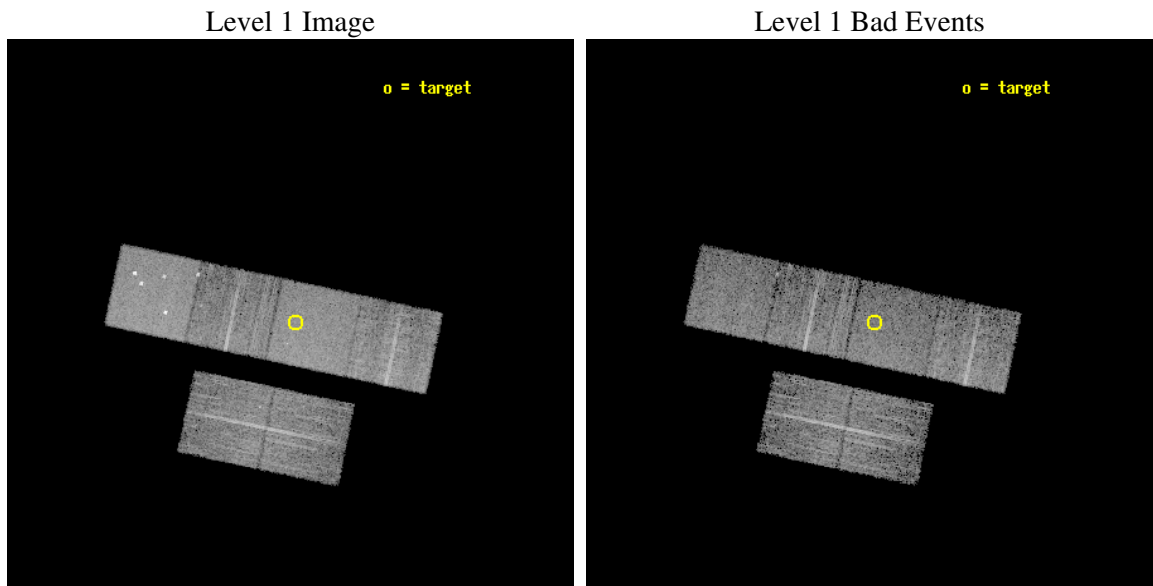
seq_num	600365
obs_id	4710
title	Using the Sculptor Dwarf Spheroidal Galaxy to Constrain X-ray Binary Production in Population II
observer	Dr. Thomas Maccarone
object	SCULPTOR DWARF SPHEROIDAL
dtcycle	0
cycle	P
ra_targ	15.039167
dec_targ	-33.708889
ra_nom	15.050764832741
dec_nom	-33.708516798355
roll_nom	11.95194815777
revision	2
ontime	5958.3999778032
livetime	5882.9511295666
ontime2	5958.3999778032
ontime3	5958.3999778032
ontime5	5958.3999778032
ontime6	5955.158977598
ontime7	5958.3999778032
ontime8	5958.3999778032
l2events	69676



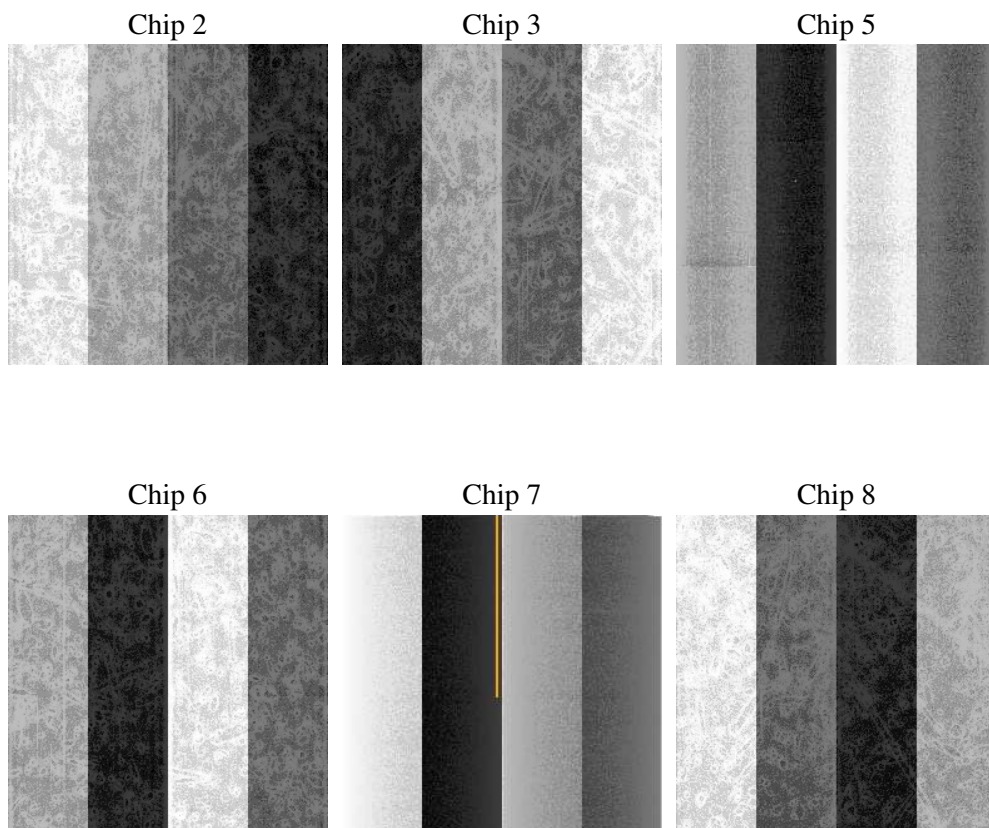
2 OBI

2.1 OBI

2.1.1 Images



2.1.2 Bias



2.1.3 Parameters

obi_num	0
ascdsver	7.6.7.1
caldbver	3.2.1
date	2006-04-16T20:14:21
revision	2

sched_exp_time	6000.000000
ontime	5963.4598966241
ontime2	5963.4598767161
ontime3	5963.4598767161
ontime5	5963.4598966241
ontime6	5960.2188964188
ontime7	5963.4598966241
ontime8	5963.4598767161
l1events	325781

2.1.4 Events

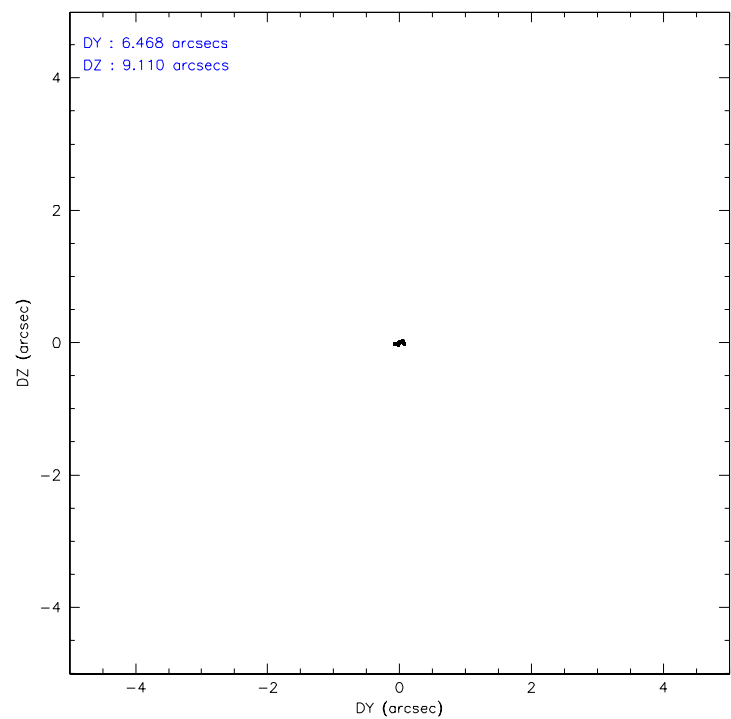
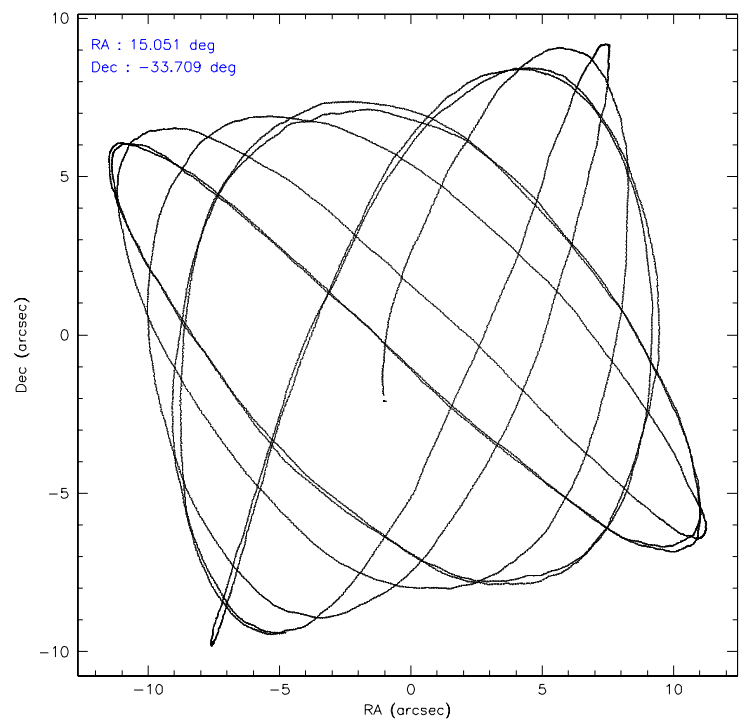
	ccd 2	ccd 3	ccd 5	ccd 6	ccd 7	ccd 8
level 1 events	46184	44785	70344	46826	60901	56741
rejected events	40748	39498	37710	41386	37573	45014
rejected %	88%	88%	53%	88%	61%	79%

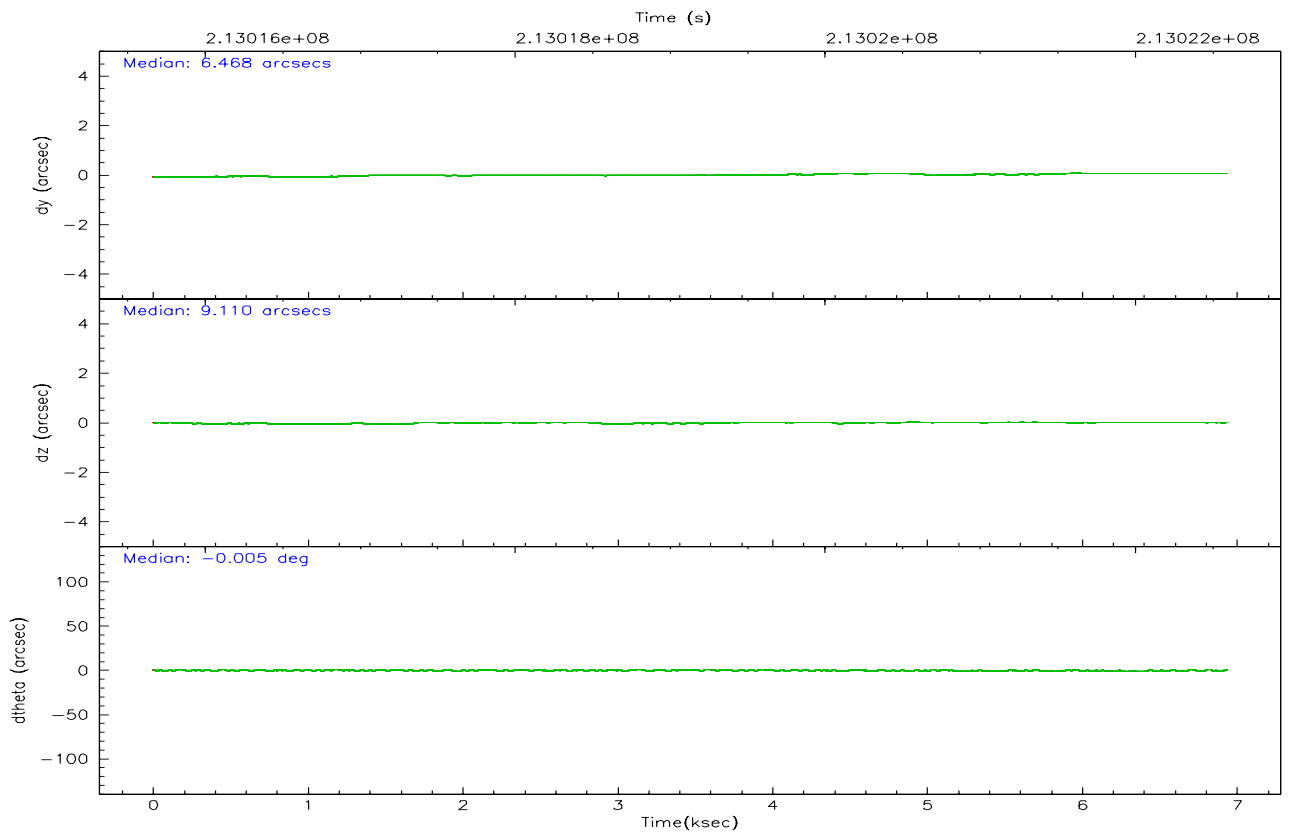
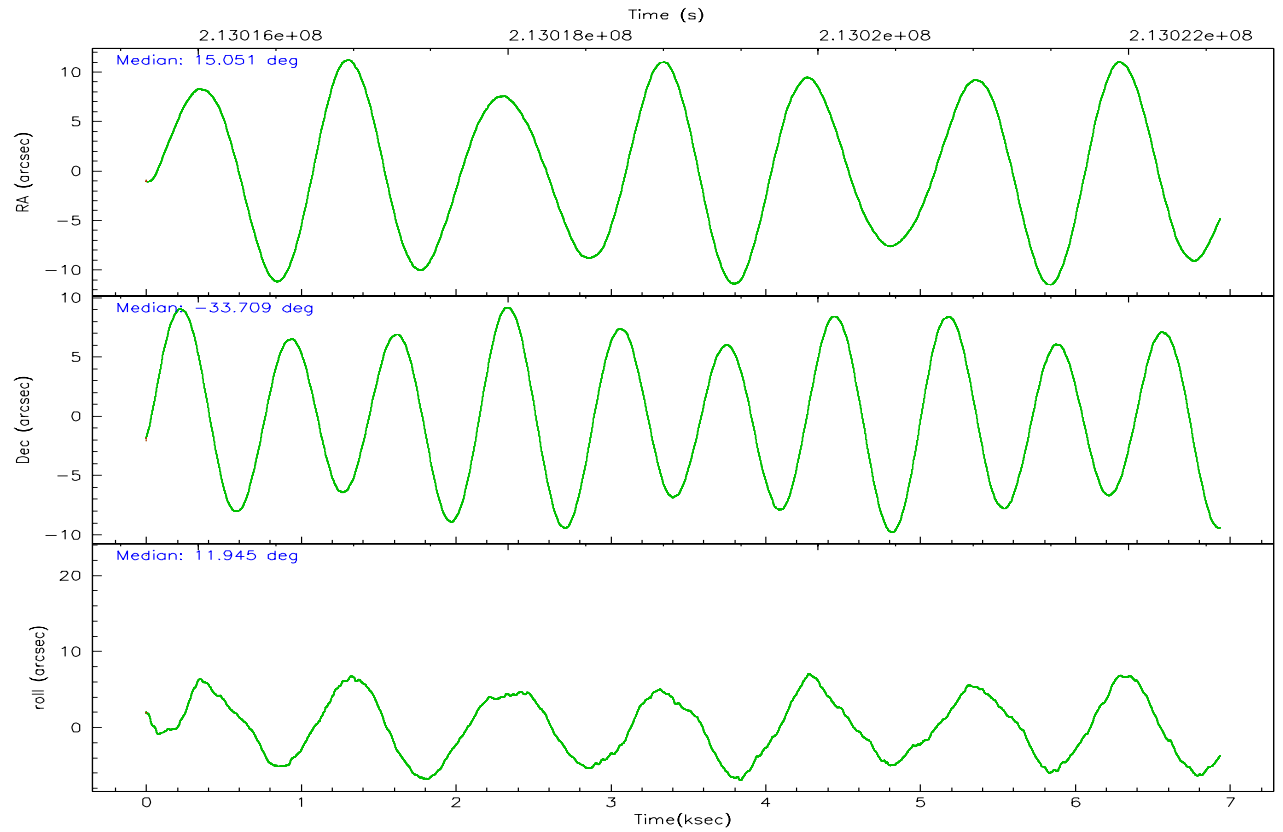
	ccd 2	ccd 3	ccd 5	ccd 6	ccd 7	ccd 8
grade 0 events	2419	2397	4644	2211	1307	3667
	5%	5%	6%	4%	2%	6%
grade 1 events	27	30	174	19	35	43
	0%	0%	0%	0%	0%	0%
grade 2 events	1083	915	9788	1103	5837	2607
	2%	2%	13%	2%	9%	4%
grade 3 events	494	516	660	530	1133	1169
	1%	1%	0%	1%	1%	2%
grade 4 events	545	529	665	520	1200	1139
	1%	1%	0%	1%	1%	2%
grade 5 events	1700	1983	3290	2168	4002	2669
	3%	4%	4%	4%	6%	4%
grade 6 events	900	933	16897	1076	13881	3152
	1%	2%	24%	2%	22%	5%
grade 7 events	39016	37482	34226	39199	33506	42295
	84%	83%	48%	83%	55%	74%

2.2 Compared Parameters

Parameter	Planned	Actual	Parameter	Planned	Actual
Instrument	ACIS	ACIS	Obspar format version number	6	6
Detector	ACIS-235678	ACIS-235678	Obspar file type	PREDICTED	ACTUAL
Grating	NONE	NONE	Obspar update status	NONE	UPDATED
Data mode	VFAINT	VFAINT	On-chip summing requested	N	N
Observation mode	POINTING	POINTING	Subarray requested	NONE	NONE
Pointing RA	15.026732	15.05076483274142	Alternating exposures requested	N	N
Pointing Dec	-33.727053	-33.70851679835527	Primary exposure time	0.000000	3.2
Pointing Roll	11.781969	11.95194815776954			
SIM focus pos (mm)	-0.684267	-0.6828225247311905			
SIM defocus (mm)	0	0.001444936568705701			
SIM translation stage pos (mm)	-190.132523	-190.1400660498719			
SIM translation stage offset (mm)	0	0.00754346686406393			
Observation start time	213016599.184000	213015116.64453			
Observation start date	2004-10-01T11:15:35	2004-10-01T10:51:56			
Observation end time	213022599.184000	213024213.00744			
Observation end date	2004-10-01T12:55:35	2004-10-01T13:23:33			
Read mode	TIMED	TIMED			

2.3 Aspect



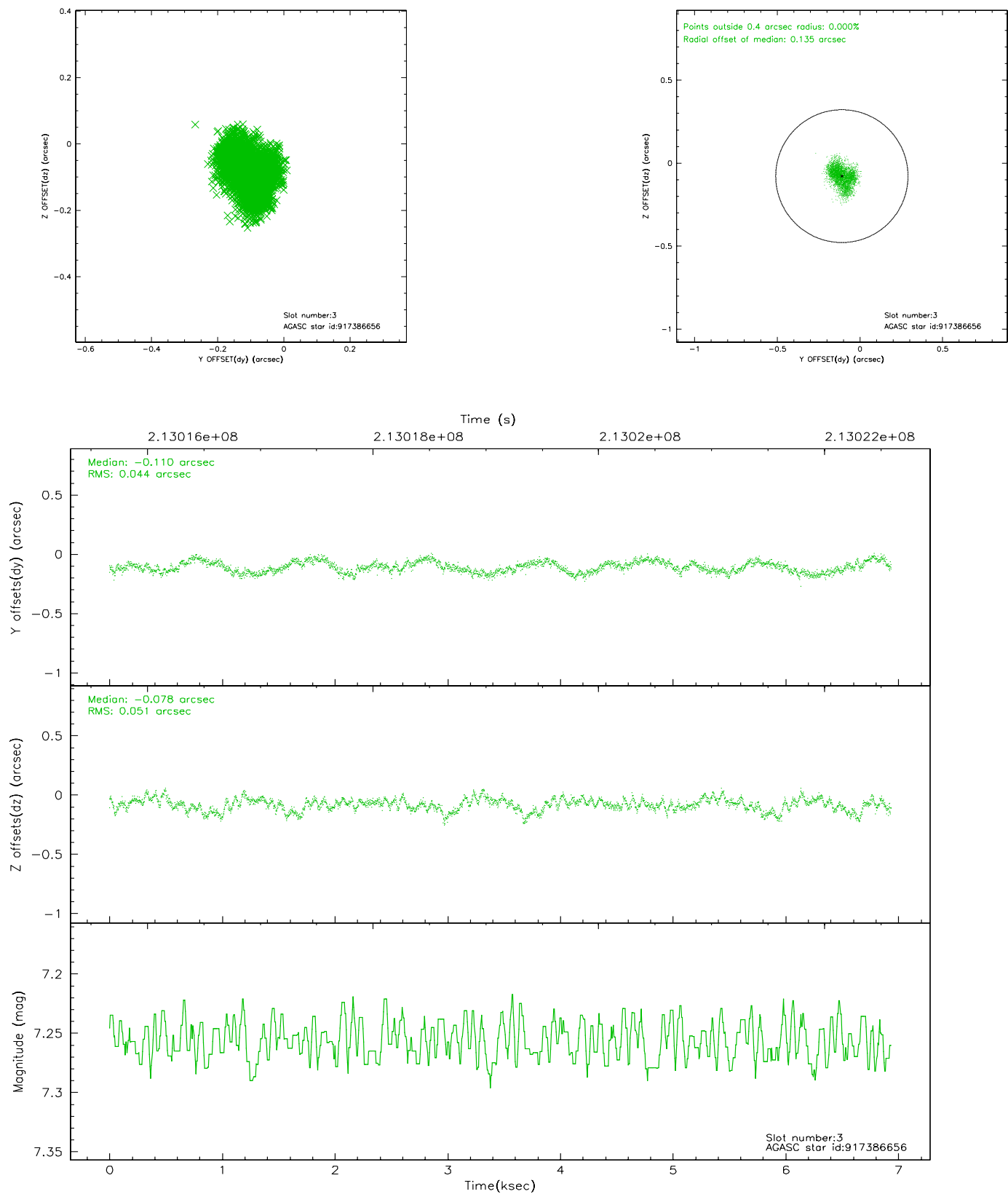


Slot Statistics

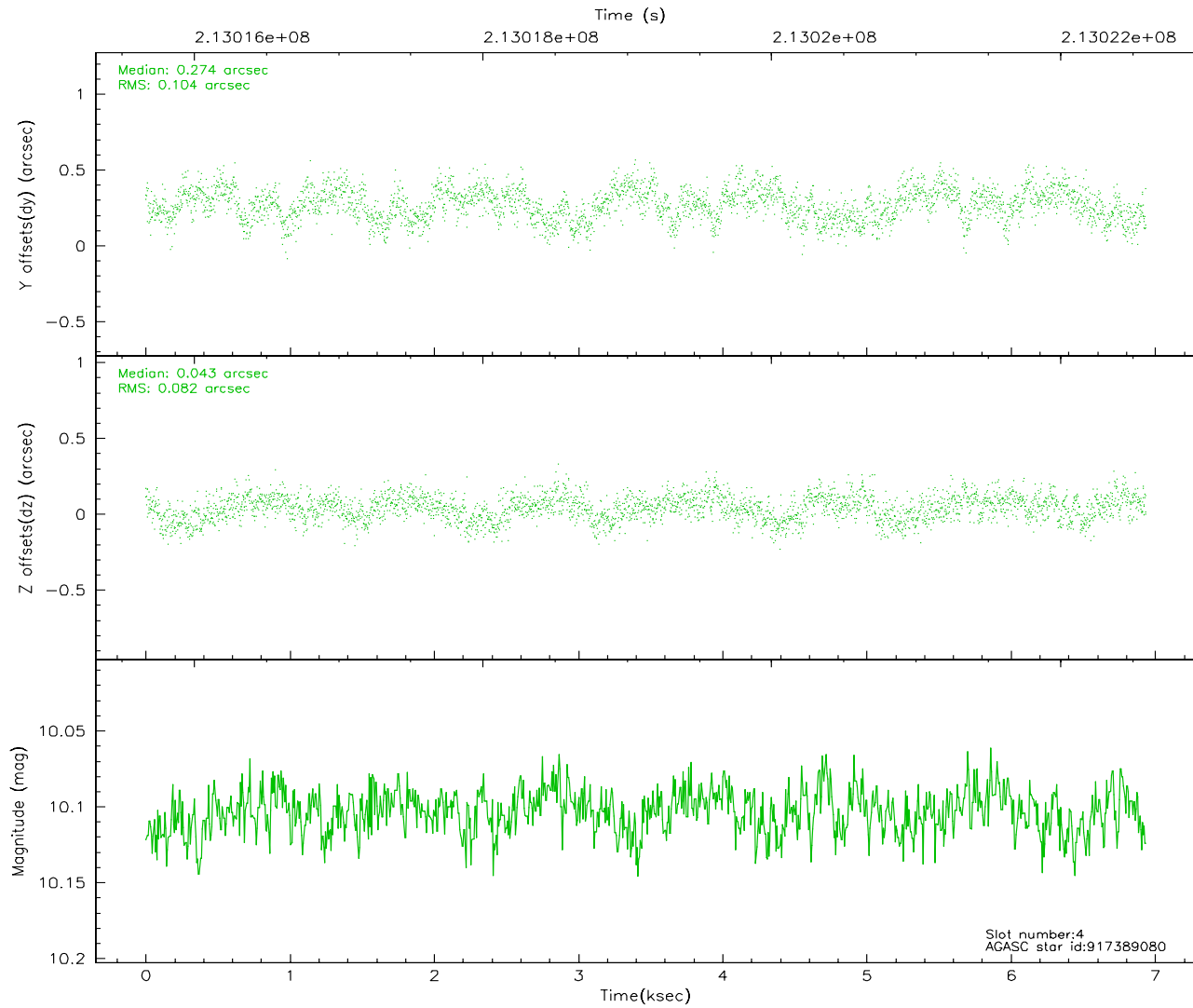
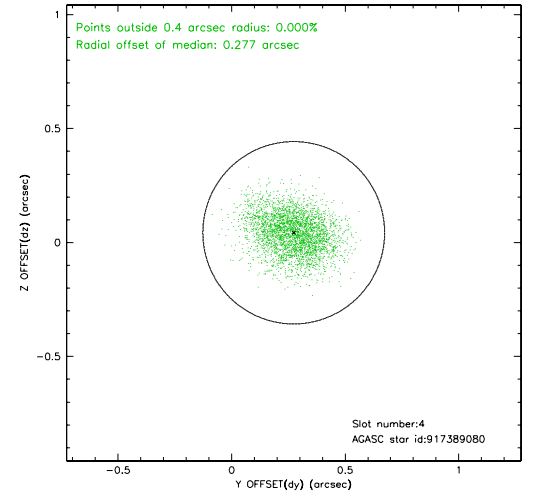
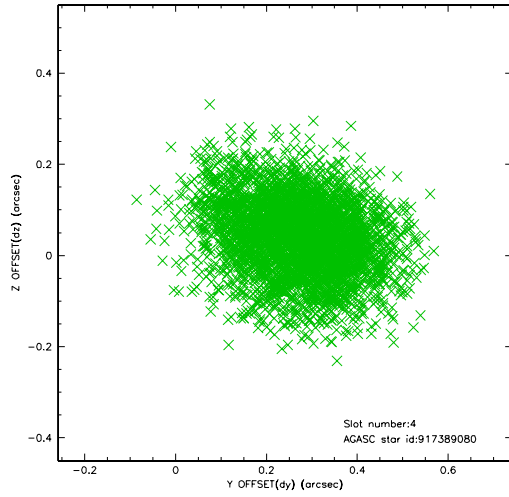
slot	status	id	mag	n_pts	med_dy	med_dz	dr1	dr2	ra	dec	mean_y	mean_z
0	FID	ACIS-S-2	7.10	1693	-0.039	-0.027	0.007	0.011	0.000000	0.000000	-759.23	-1730.36
1	FID	ACIS-S-4	7.21	1693	0.052	0.026	0.005	0.009	0.000000	0.000000	2153.74	177.34
2	FID	ACIS-S-5	7.23	1693	-0.045	0.010	0.006	0.011	0.000000	0.000000	-1811.03	171.91
3	GUIDE	917386656	7.26	3384	-0.110	-0.078	0.073	0.114	15.342124	-33.359890	1198.08	1098.81
4	GUIDE	917389080	10.10	3383	0.274	0.043	0.141	0.231	15.722484	-33.662555	2087.69	-204.84
5	GUIDE	917389288	9.57	3382	-0.067	0.008	0.104	0.169	15.394706	-33.185862	1483.35	1678.80
6	GUIDE	917645208	10.19	3379	0.034	-0.002	0.151	0.244	15.521597	-34.090794	1177.15	-1586.19
7	GUIDE	917651048	9.66	3381	-0.128	0.035	0.107	0.171	14.655628	-34.424089	-1590.90	-2234.25

2.4 Star Slots

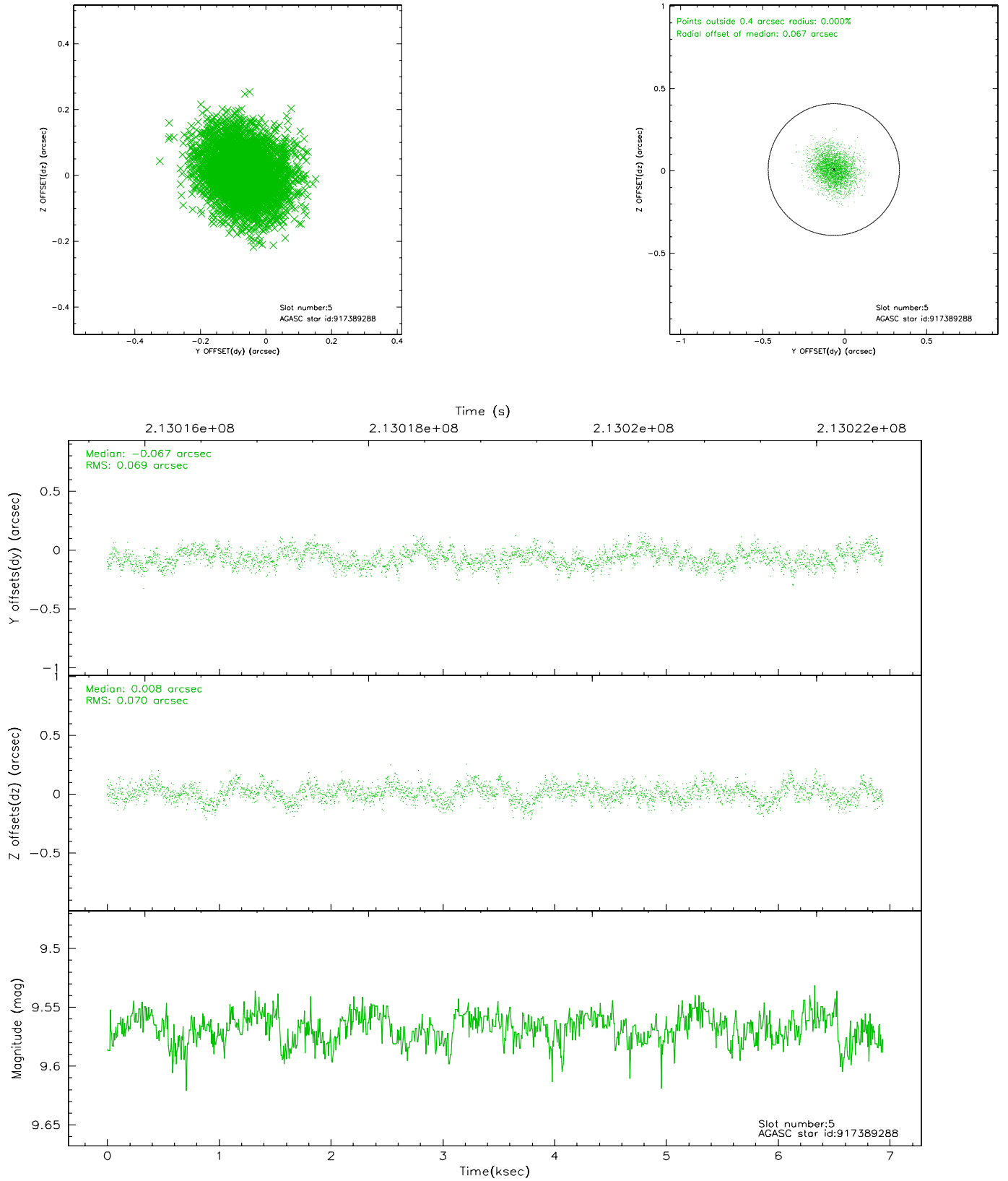
2.4.1 Slot 3



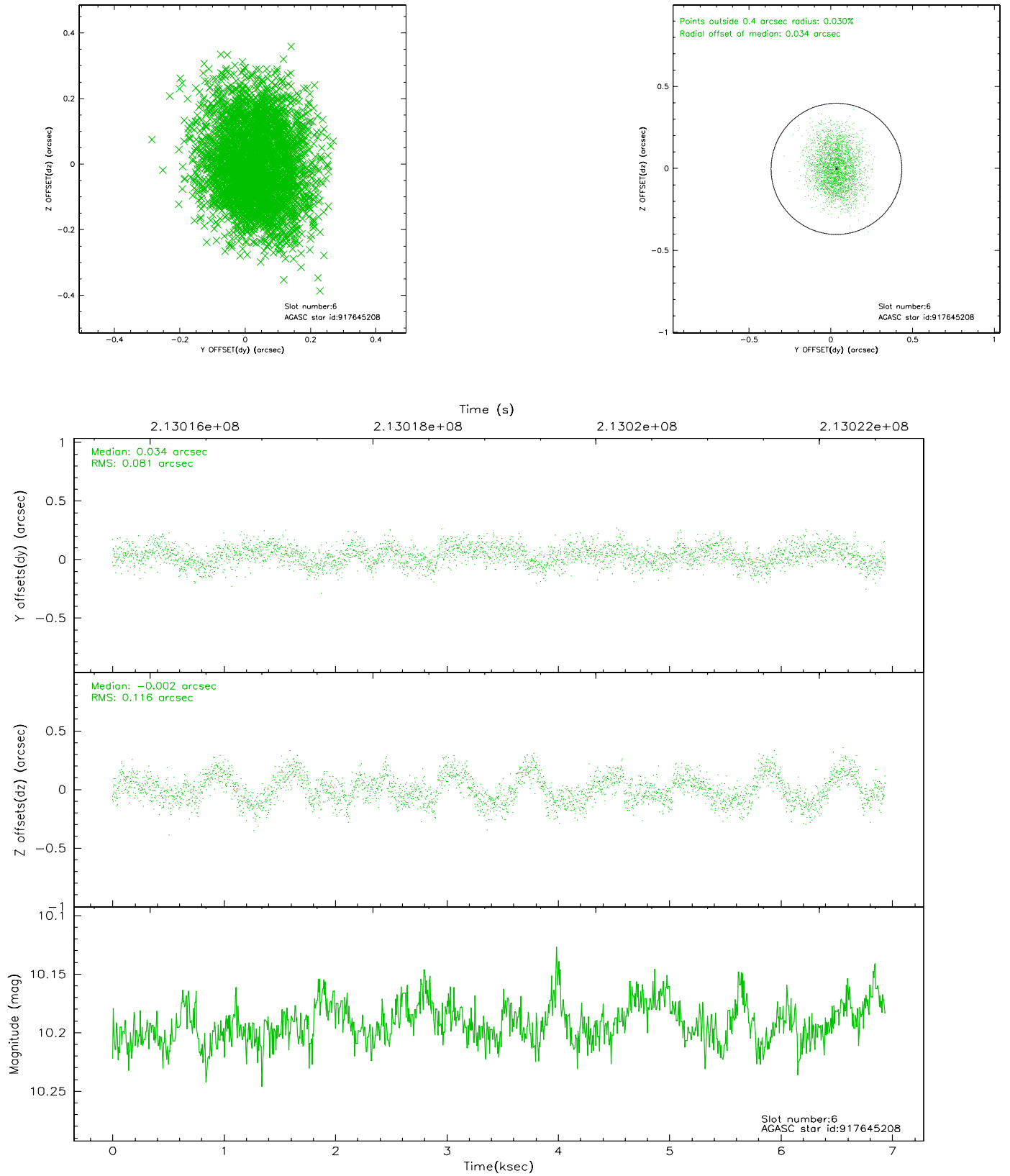
2.4.2 Slot 4



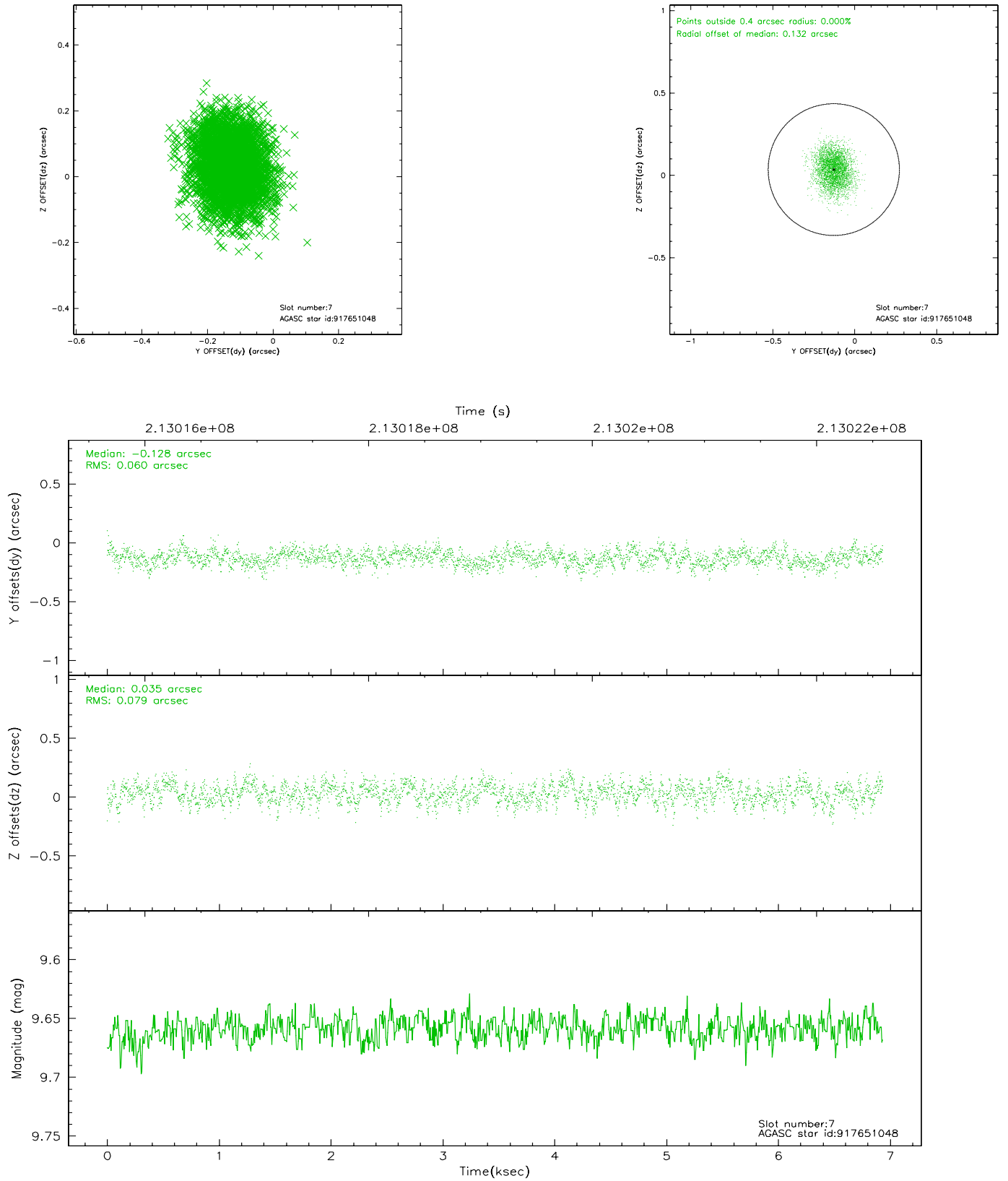
2.4.3 Slot 5



2.4.4 Slot 6

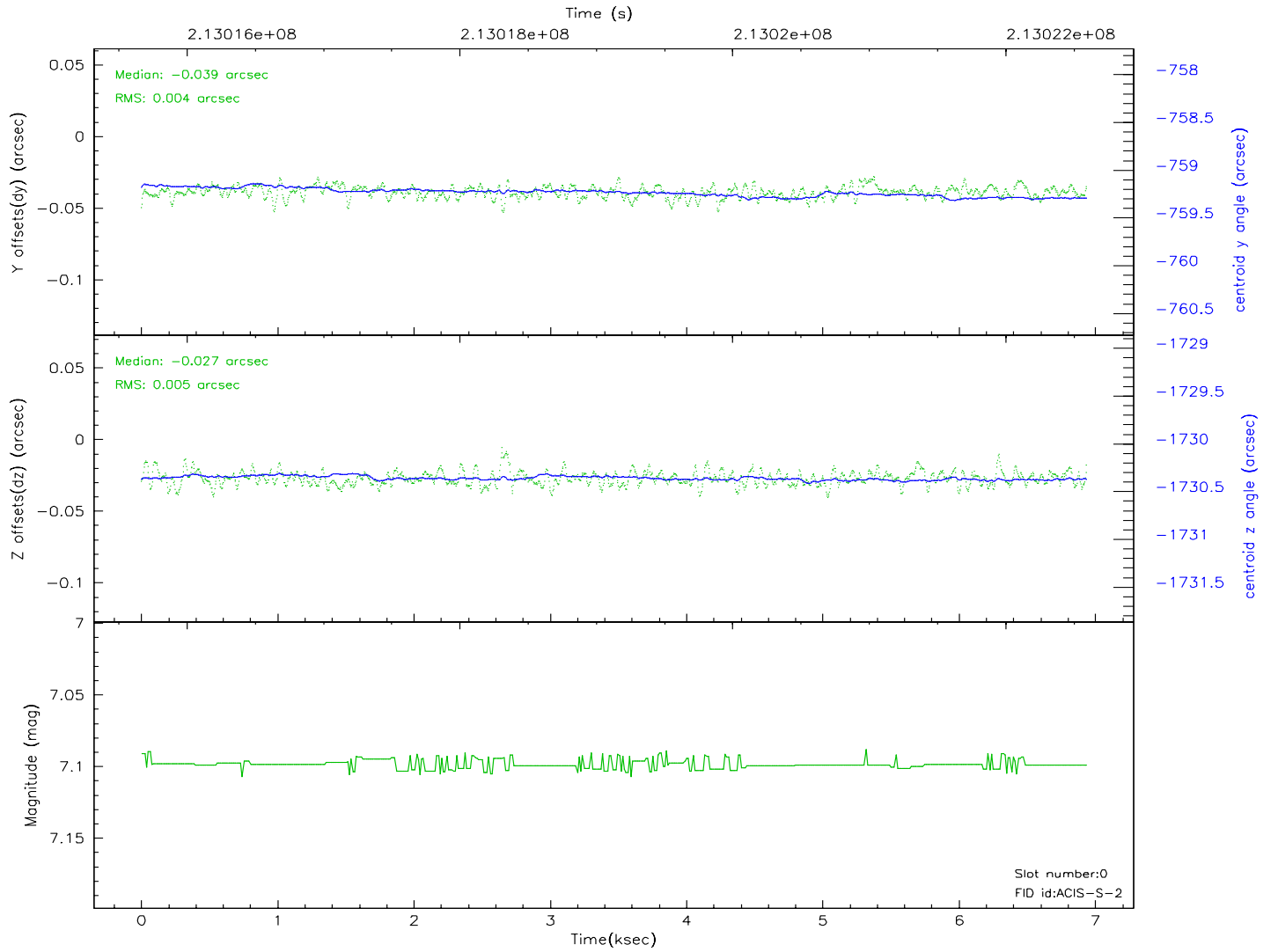
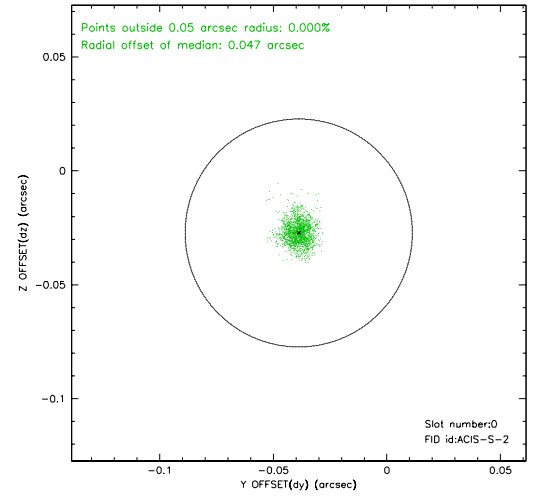
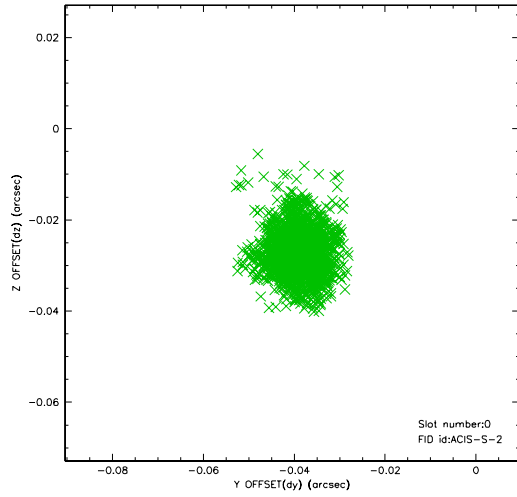


2.4.5 Slot 7

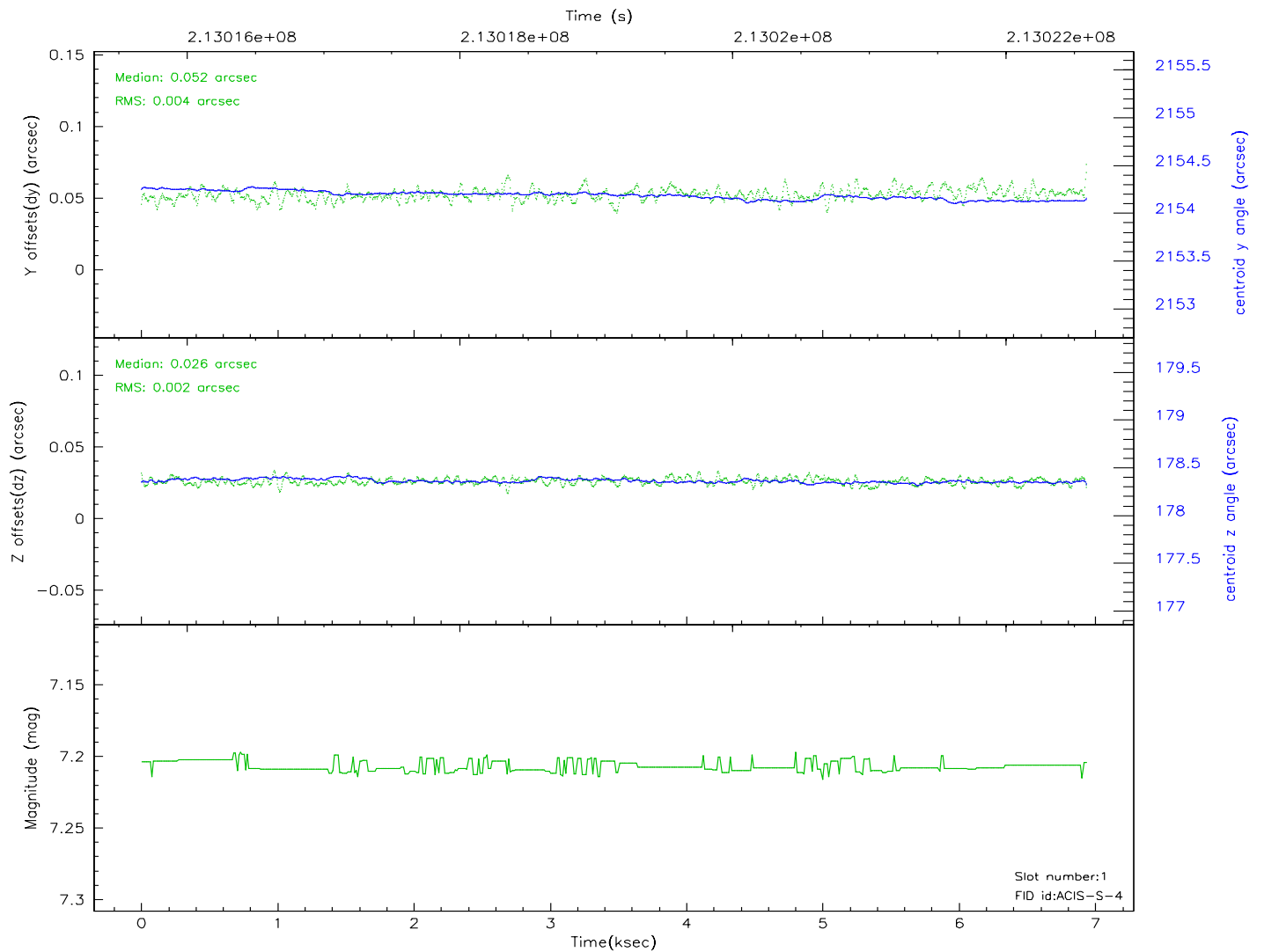
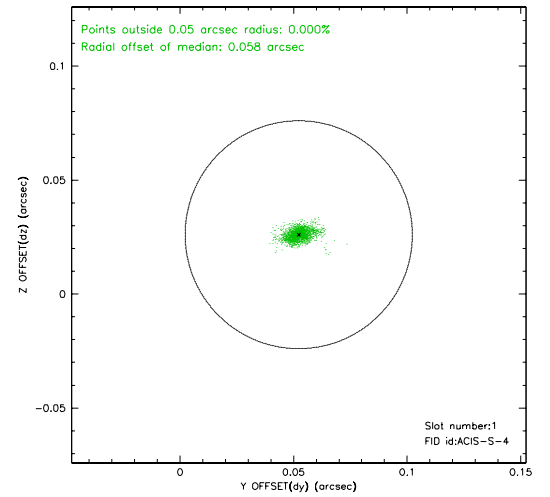
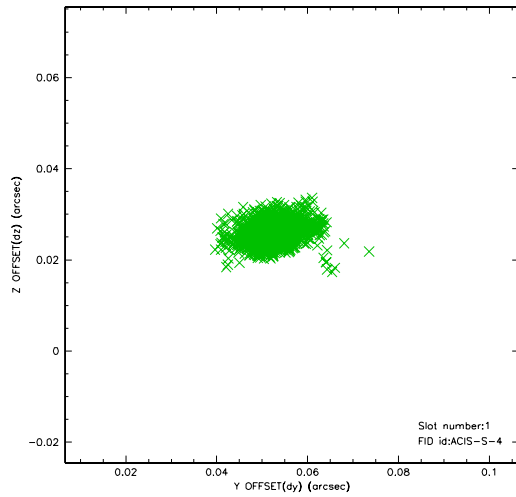


2.5 FID Slots

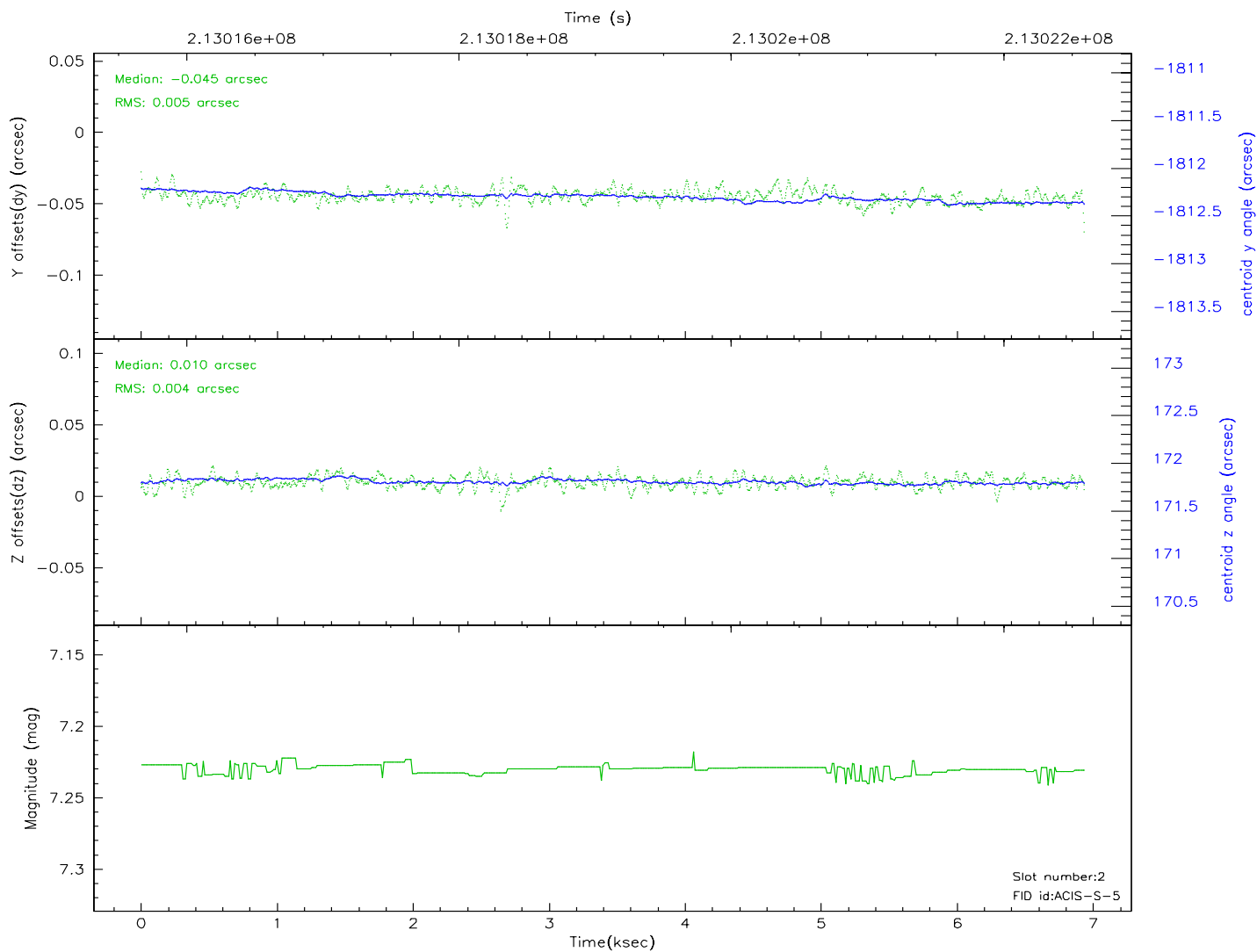
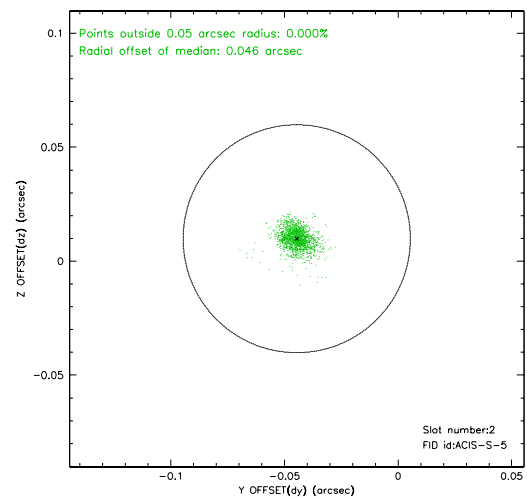
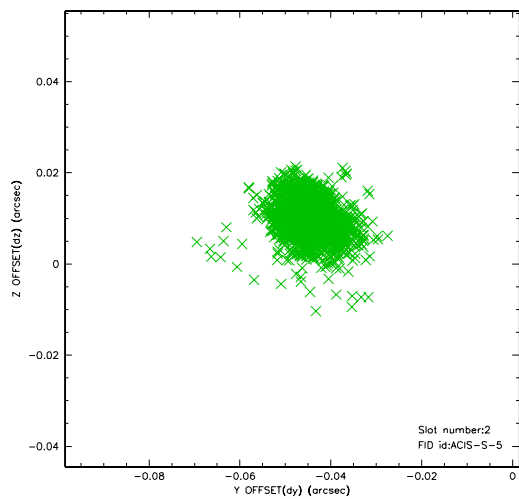
2.5.1 Slot 0



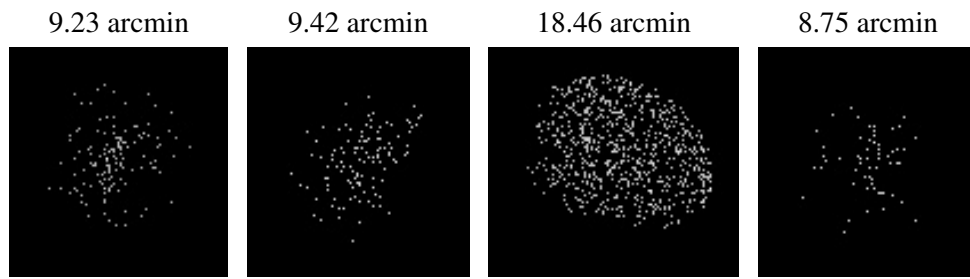
2.5.2 Slot 1



2.5.3 Slot 2



3 Point Sources



A Summary

A.1 Status

V&V Scientist	Jen Lauer
V&V Date (YYYY-MM-DD)	2006.04.17
V&V Edition	1
V&V Disposition and Status	OK
V&V Charge Time	5.958

A.2 Comments

Monitor constraint met.