

# V&V Reference Report

## L2 ASCDS Version : 8.4.5

Observation 4540 - L2 Version 3  
Chandra X-Ray Center

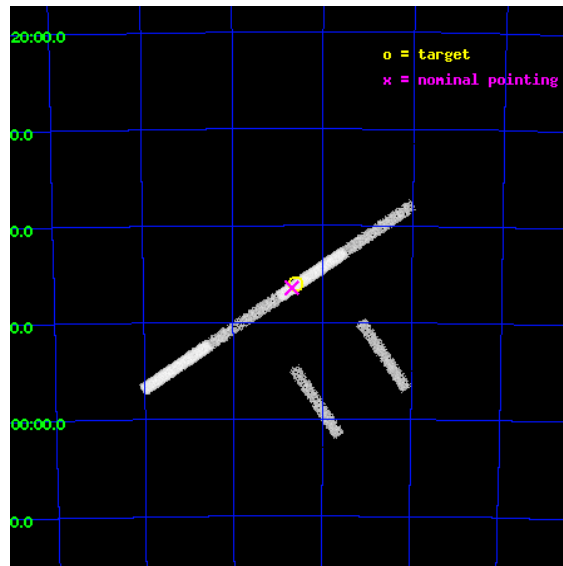
L2 Processing Date : Nov 7 2012

## Contents

<b>1</b>	<b>Front</b>	<b>2</b>
<b>2</b>	<b>OBI</b>	<b>3</b>
2.1	OBI . . . . .	3
2.1.1	Images . . . . .	3
2.1.2	Bias . . . . .	3
2.1.3	Parameters . . . . .	4
2.1.4	Events . . . . .	4
2.2	Compared Parameters . . . . .	5
2.3	Aspect . . . . .	6
2.4	Star Slots . . . . .	9
2.4.1	Slot 3 . . . . .	9
2.4.2	Slot 4 . . . . .	10
2.4.3	Slot 5 . . . . .	11
2.4.4	Slot 6 . . . . .	12
2.4.5	Slot 7 . . . . .	13
2.5	FID Slots . . . . .	14
2.5.1	Slot 0 . . . . .	14
2.5.2	Slot 1 . . . . .	15
2.5.3	Slot 2 . . . . .	16
<b>A</b>	<b>Summary</b>	<b>17</b>
A.1	Status . . . . .	17
A.2	Comments . . . . .	17

# 1 Front

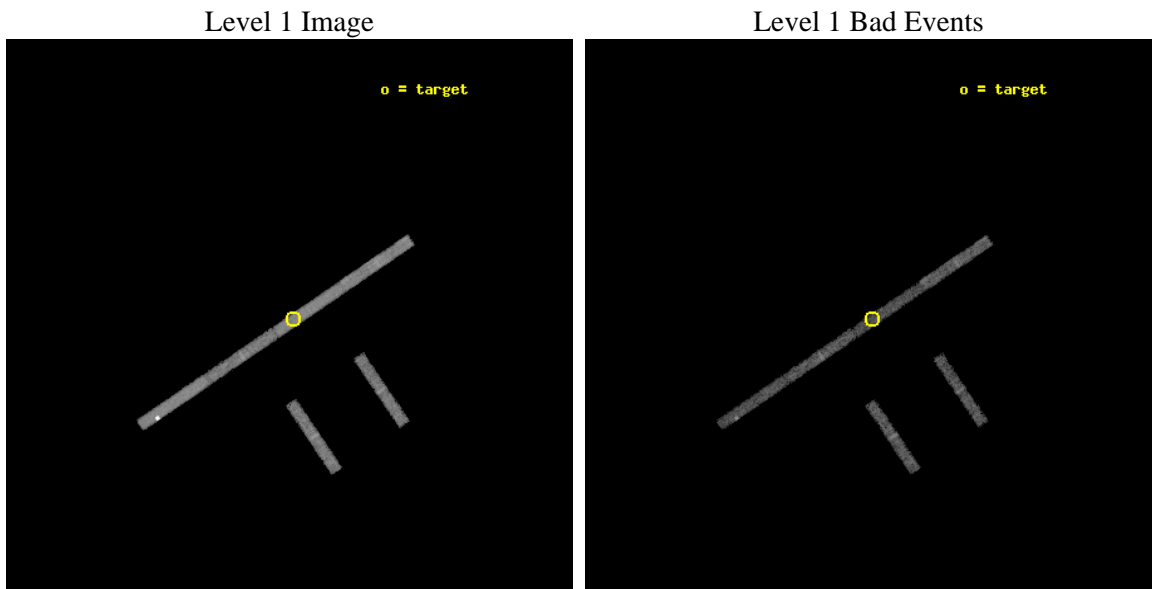
seq_num	300134	Sequence number
obs_id	4540	Observation id
title	Understanding the nature of supersoft X-ray sources	Proposal title
observer	Dr. Jochen Greiner	Principal investigator
object	RXJ 0058.6-7146	Source name
dtcycle	0	&#160
cycle	P	events from which exps? Prim/Second/Both
ra_targ	14.649167	Observer's specified target RA [deg]
dec_targ	-71.767222	Observer's specified target Dec [deg]
ra_nom	14.671372846098	Nominal RA [deg]
dec_nom	-71.773995349514	Nominal Dec [deg]
roll_nom	325.85598999471	Nominal Roll [deg]
revision	3	Processing version of data
ontime	10121.999827623	Sum of GTIs [s]
livetime	9561.4270205877	Livetime [s]
ontime2	10121.999827623	Sum of GTIs [s]
ontime3	10121.999827623	Sum of GTIs [s]
ontime5	10121.999827623	Sum of GTIs [s]
ontime6	10121.999827623	Sum of GTIs [s]
ontime7	10121.999827623	Sum of GTIs [s]
ontime8	10121.999827623	Sum of GTIs [s]
l2events	25666	Number of level 2 events



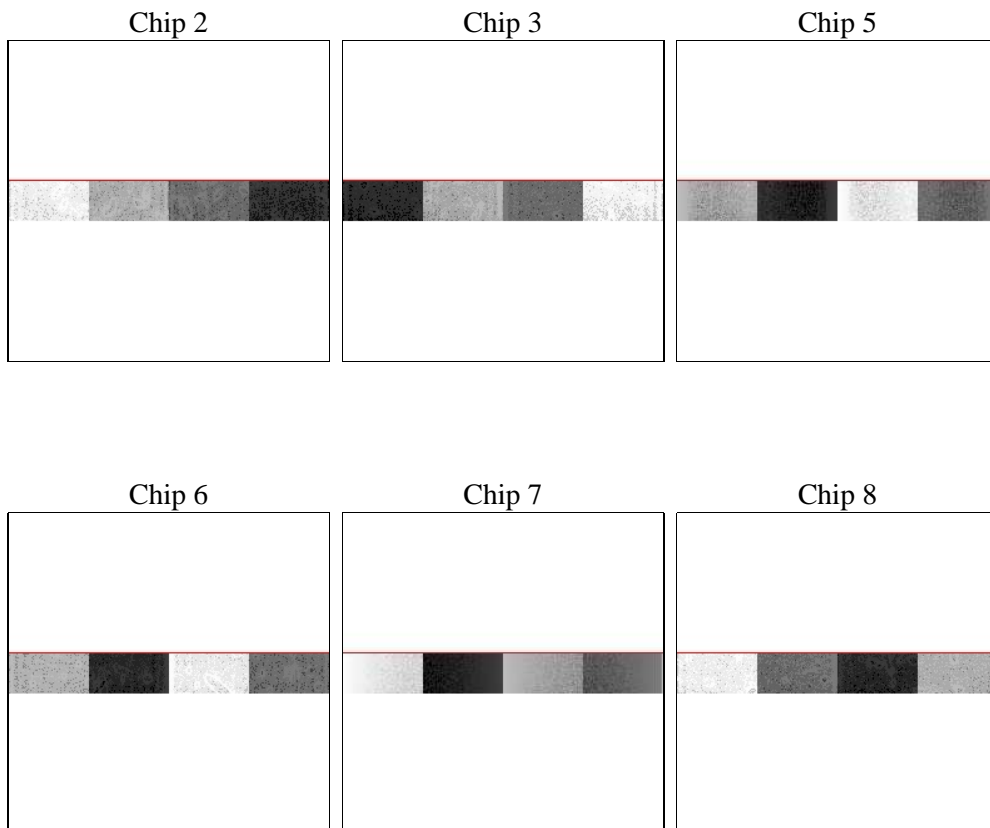
## 2 OBI

### 2.1 OBI

#### 2.1.1 Images



#### 2.1.2 Bias



### 2.1.3 Parameters

obi_num	0	Obi number	sched_exp_time	10000.000000	[s] Scheduled observation exposure time
ascdsver	8.4.5	Processing system revision	ontime	10121.999827623	Sum of GTIs [s]
caldsver	4.5.2	&#160	ontime2	10121.999827623	Sum of GTIs [s]
date	2012-11-08T02:06:49	Date and time of file creation	ontime3	10121.999827623	Sum of GTIs [s]
revision	3	Processing version of data	ontime5	10121.999827623	Sum of GTIs [s]
			ontime6	10121.999827623	Sum of GTIs [s]
			ontime7	10121.999827623	Sum of GTIs [s]
			ontime8	10121.999827623	Sum of GTIs [s]
			l1events	105270	Number of level 1 events

### 2.1.4 Events

	ccd 2	ccd 3	ccd 5	ccd 6	ccd 7	ccd 8
level 1 events	12477	10902	33354	12450	17222	18865
rejected events	10412	8953	10919	10088	8187	13073
rejected %	83%	82%	32%	81%	47%	69%

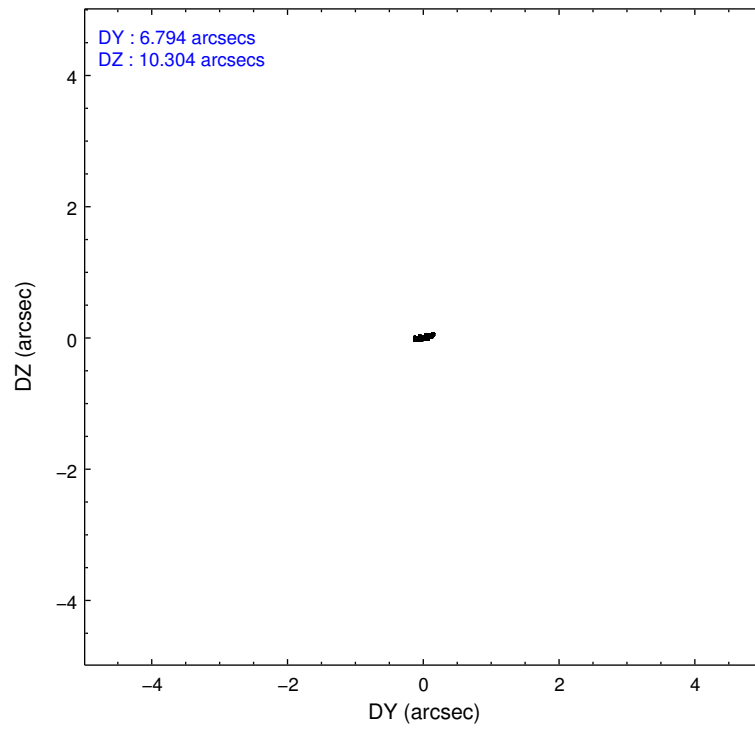
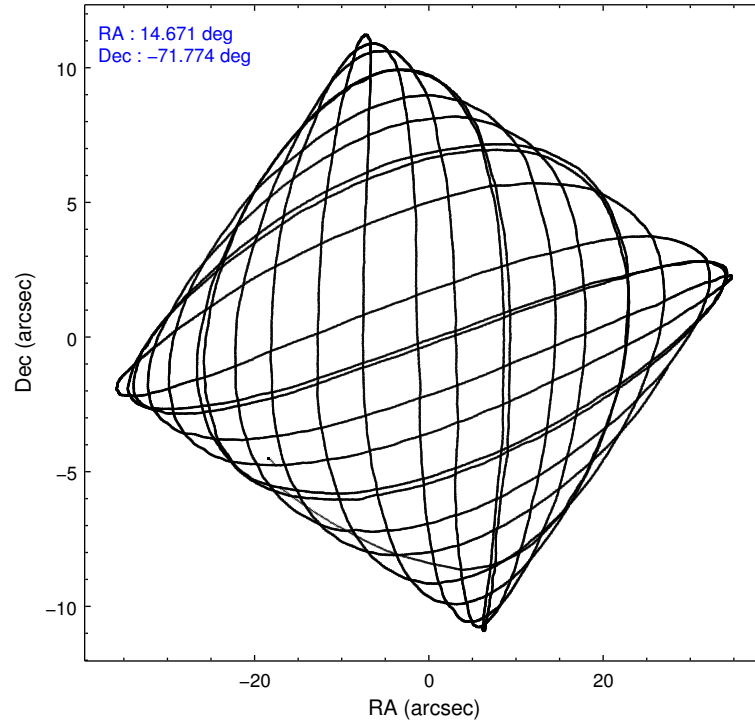
	ccd 2	ccd 3	ccd 5	ccd 6	ccd 7	ccd 8
grade 0 events	1103	1030	13435	1267	1143	2843
	8%	9%	40%	10%	6%	15%
grade 1 events	3	2	438	7	16	17
	0%	0%	1%	0%	0%	0%
grade 2 events	494	511	5396	676	1939	956
	3%	4%	16%	5%	11%	5%
grade 3 events	190	188	782	194	962	960
	1%	1%	2%	1%	5%	5%
grade 4 events	182	175	1242	198	945	887
	1%	1%	3%	1%	5%	4%
grade 5 events	355	341	1208	390	1173	484
	2%	3%	3%	3%	6%	2%
grade 6 events	375	343	4710	357	5189	1091
	3%	3%	14%	2%	30%	5%
grade 7 events	9775	8312	6143	9361	5855	11627
	78%	76%	18%	75%	33%	61%

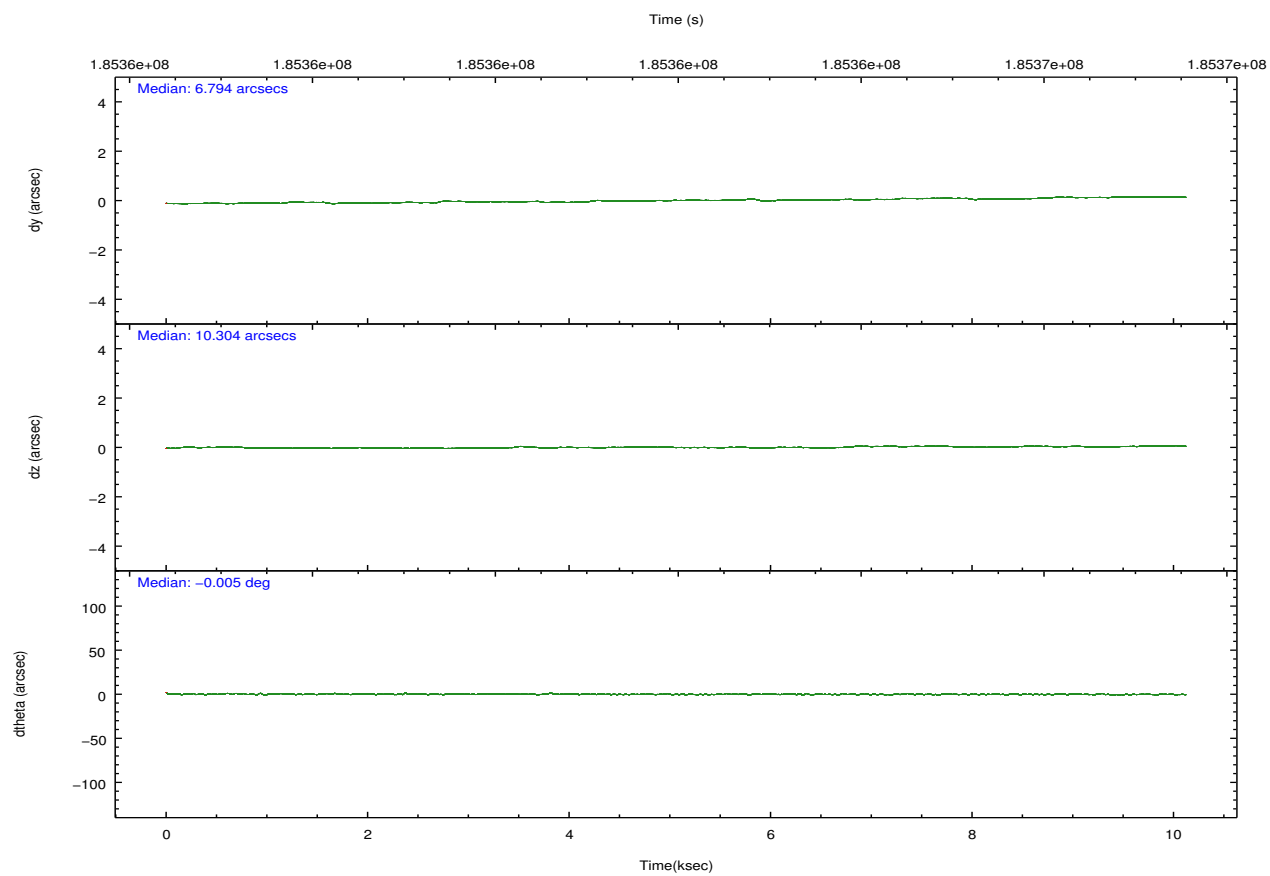
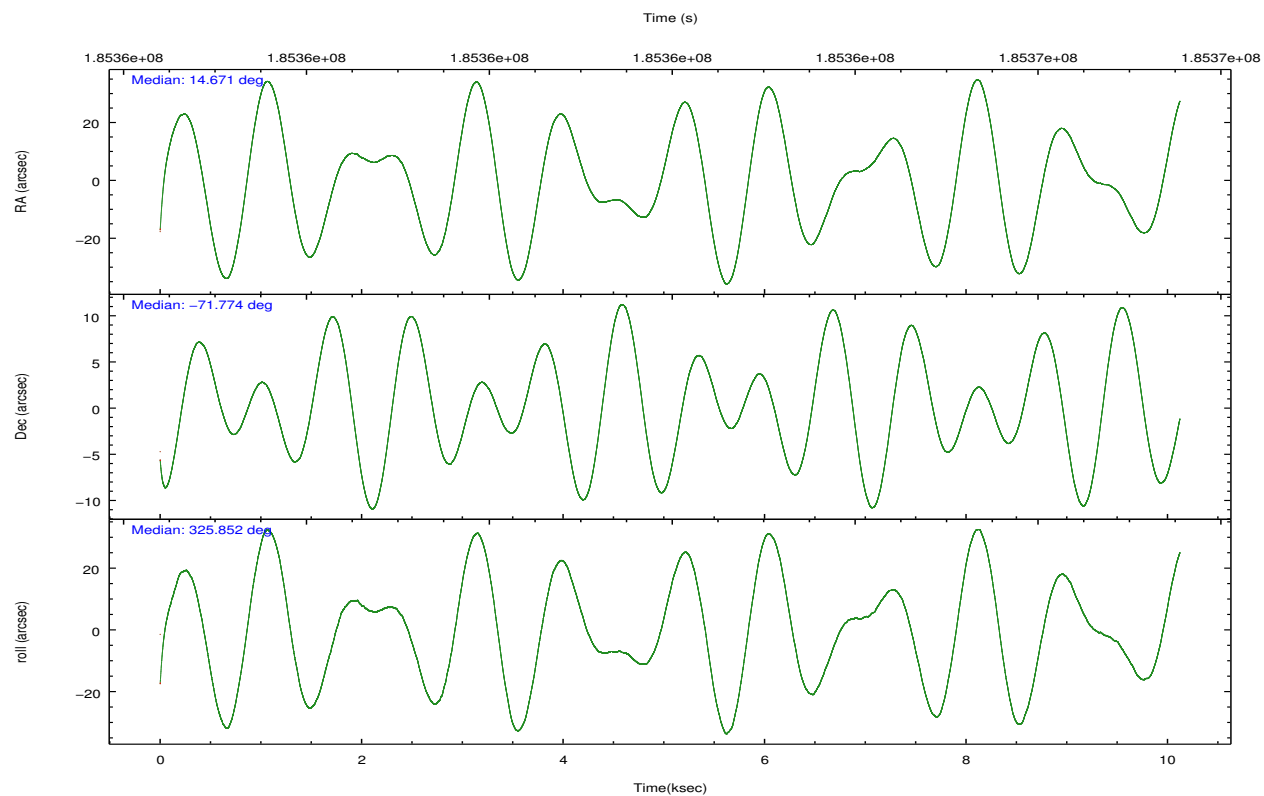


## 2.2 Compared Parameters

Parameter	Planned	Actual	Parameter	Planned	Actual
Instrument	ACIS	ACIS	Obspar format version number	7	7
Detector	ACIS-235678	ACIS-235678	Obspar file type	PREDICTED	ACTUAL
Grating	NONE	NONE	Obspar update status	NONE	UPDATED
Data mode	FAINT	FAINT	Number of optional ACIS chips dropped	0	0
Observation mode	POINTING	POINTING	On-chip summing requested	N	N
[deg] Pointing RA	14.584416	14.67137284609794	Subarray requested	CUSTOM	1/8
[deg] Pointing Dec	-71.772365	-71.77399534951381	Subarray start row	449	449
[deg] Pointing Roll	325.616770	325.8559899947069	Subarray row count	128	128
[mm] SIM focus pos	-0.684267	-0.6828225247311905	Alternating exposures requested	N	N
[mm] SIM defocus	0	0.001444936568705701	[s] Primary exposure time	0.000000	0.7
[mm] SIM translation stage pos	-190.132523	-190.1400660498719			
[mm] SIM translation stage offset	0	0.00754346686406393			
[s] Observation start time (MET)	185357036.184000	185355402.27665			
Observation start date	2003-11-16T08:02:52	2003-11-16T07:36:42			
[s] Observation end time (MET)	185367036.184000	185367868.32719			
Observation end date	2003-11-16T10:49:32	2003-11-16T11:04:28			
Read mode	TIMED	TIMED			

## 2.3 Aspect



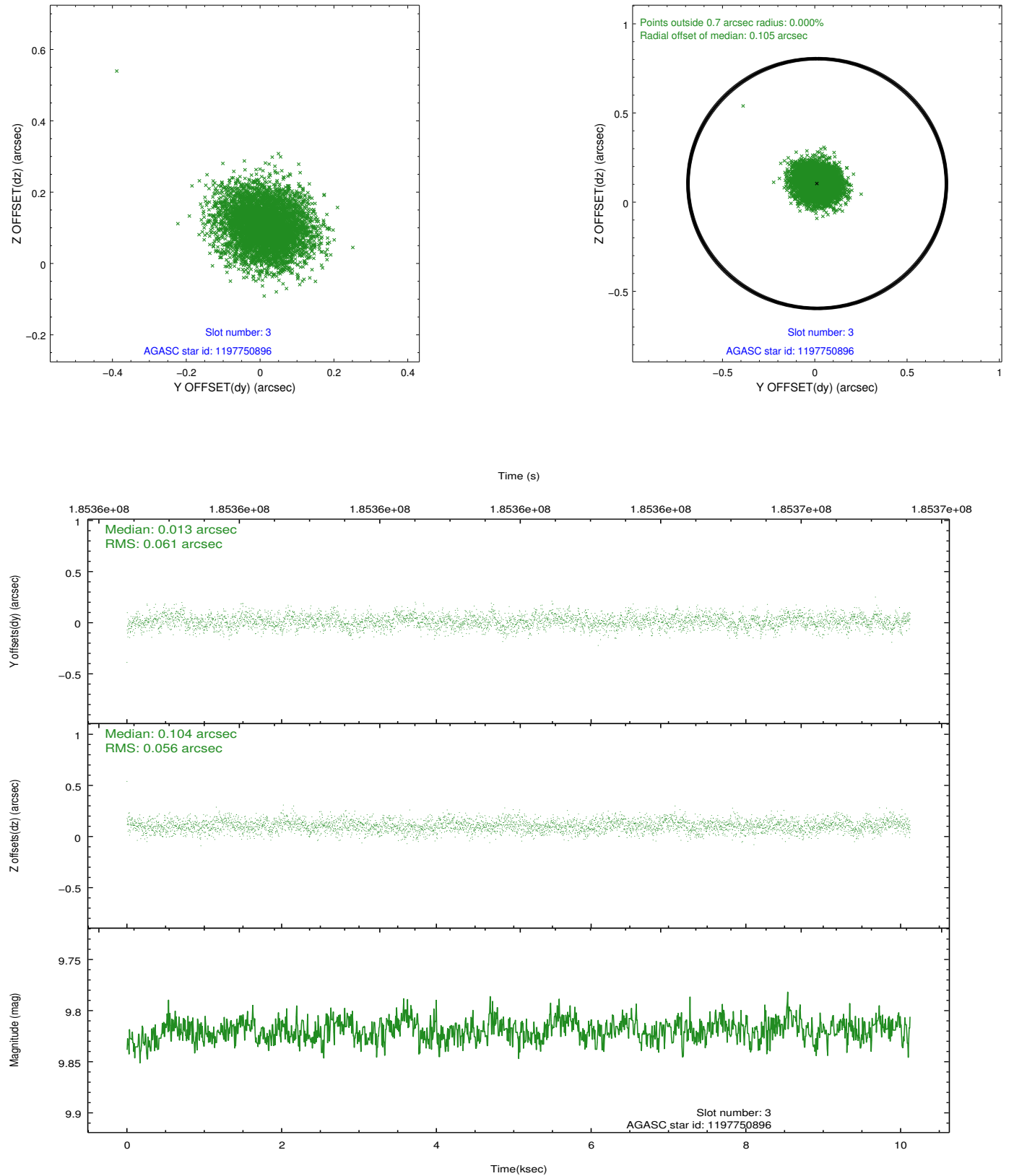


### Slot Statistics

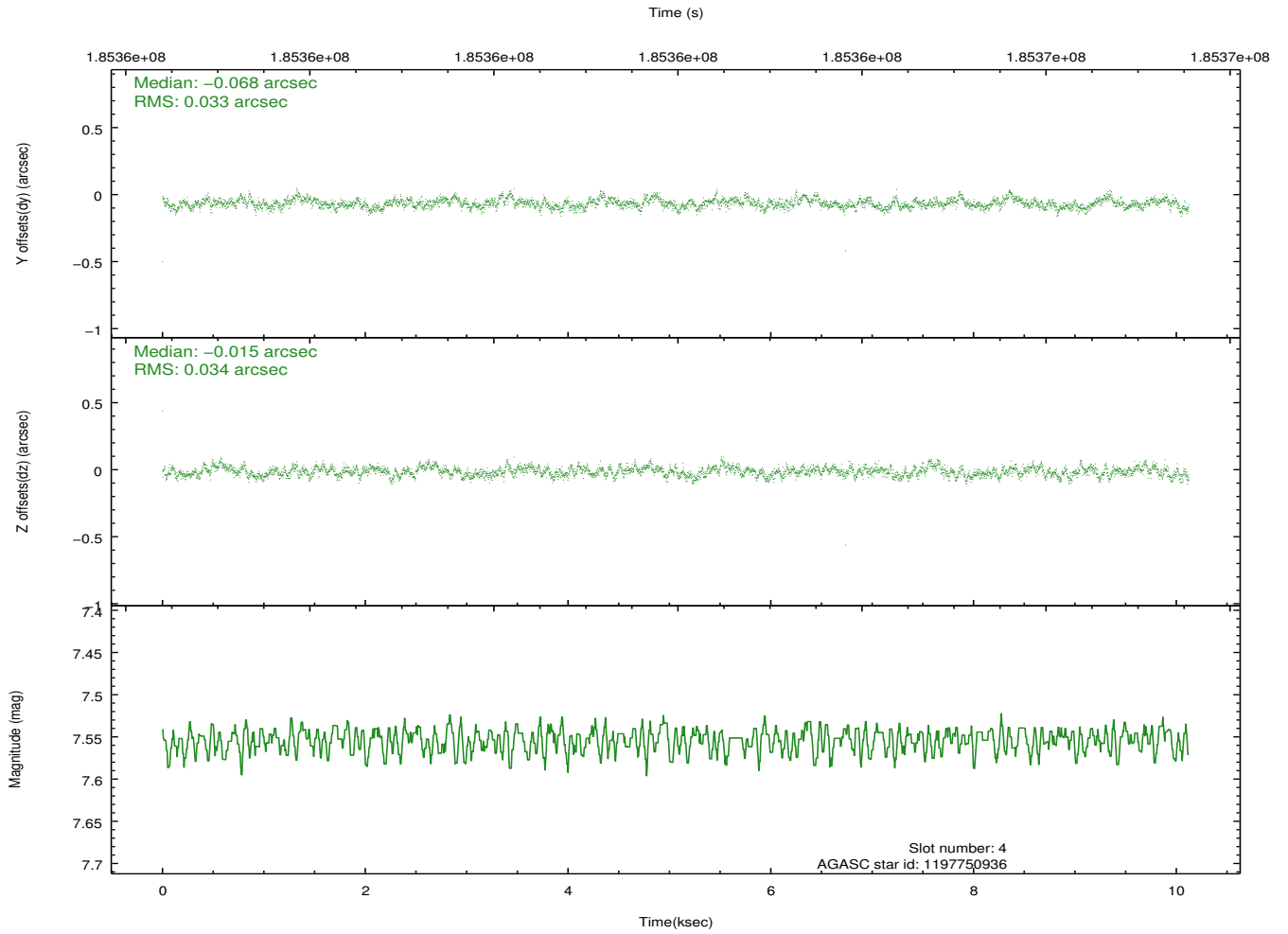
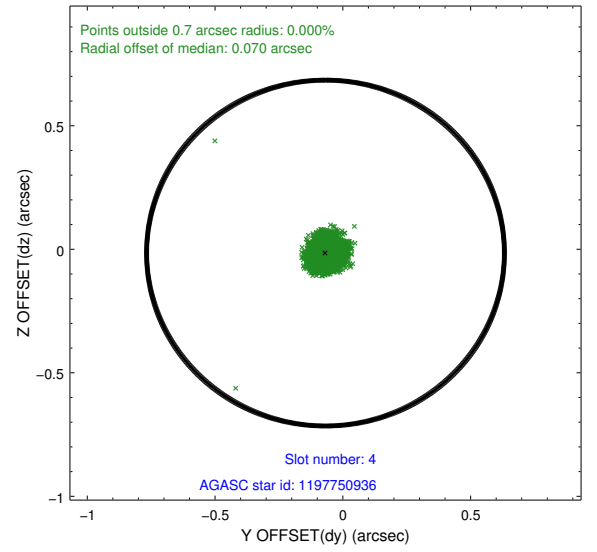
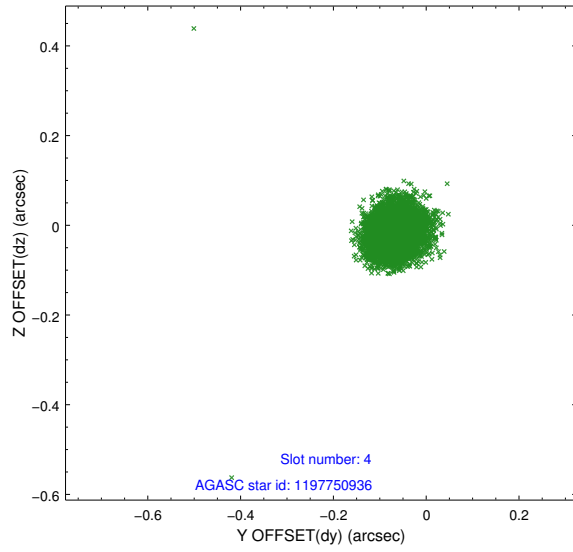
slot	status	id	mag	n_pts	med_dy	med_dz	dr1	dr2	ra	dec	mean_y	mean_z
0	FID	ACIS-S-2	7.10	2469	-0.057	-0.020	0.007	0.011	0.000000	0.000000	-759.56	-1731.60
1	FID	ACIS-S-4	7.20	2470	0.076	0.033	0.005	0.011	0.000000	0.000000	2153.57	176.45
2	FID	ACIS-S-5	7.23	2469	-0.050	-0.004	0.007	0.011	0.000000	0.000000	-1811.76	170.61
3	GUIDE	1197750896	9.82	4934	0.013	0.104	0.088	0.143	12.910875	-71.532544	-2047.17	-386.98
4	GUIDE	1197750936	7.55	4939	-0.068	-0.015	0.049	0.079	15.387940	-71.549550	305.73	1173.76
5	GUIDE	1197885328	7.22	4939	0.002	-0.079	0.040	0.067	16.283090	-71.733943	1519.16	1174.81
6	GUIDE	1197751048	8.58	4939	-0.072	-0.112	0.077	0.119	12.451586	-72.130600	-1191.61	-2428.94
7	GUIDE	1197884712	8.32	4938	0.124	0.103	0.072	0.109	16.087398	-72.252690	2349.28	-512.95

## 2.4 Star Slots

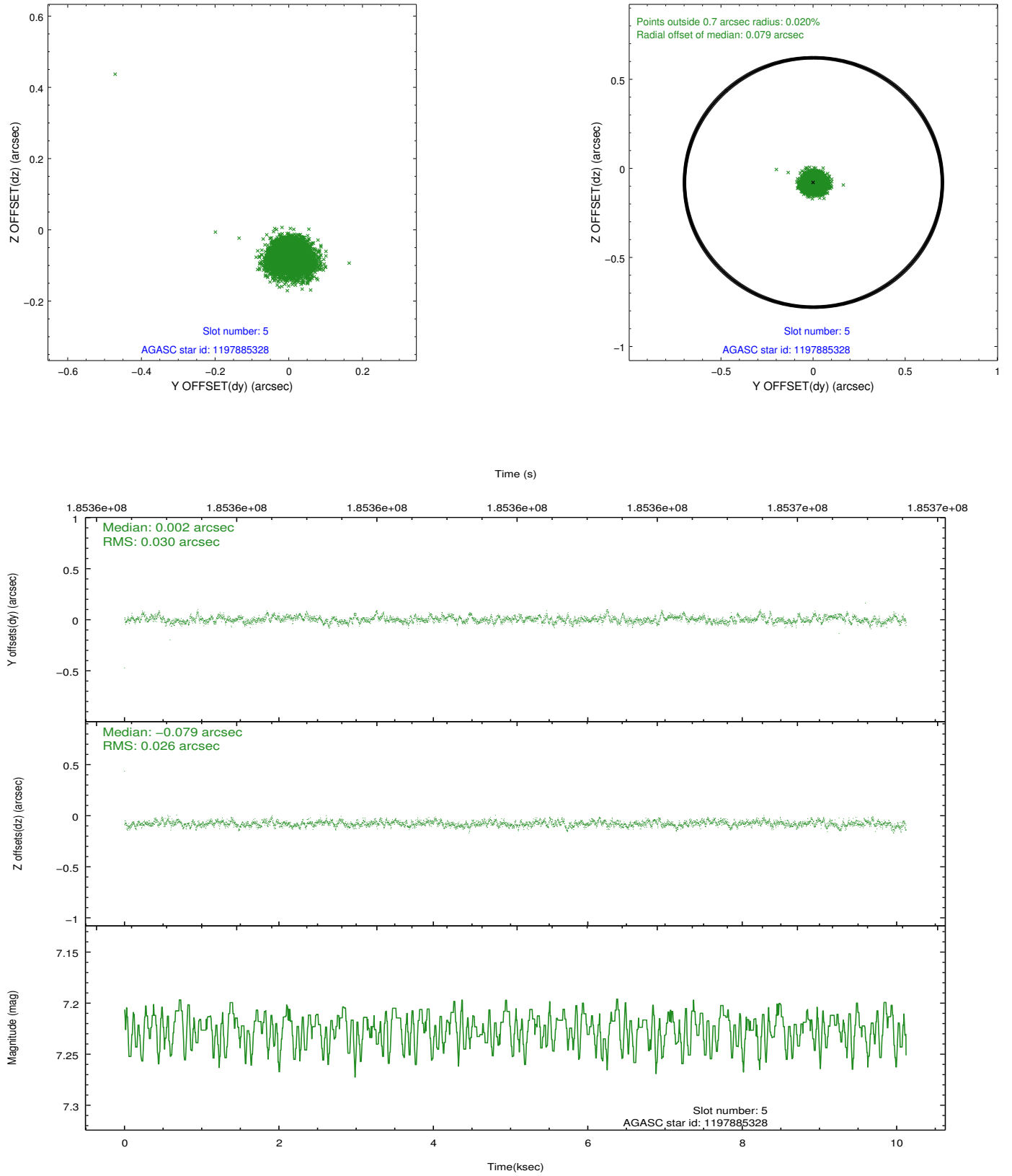
### 2.4.1 Slot 3



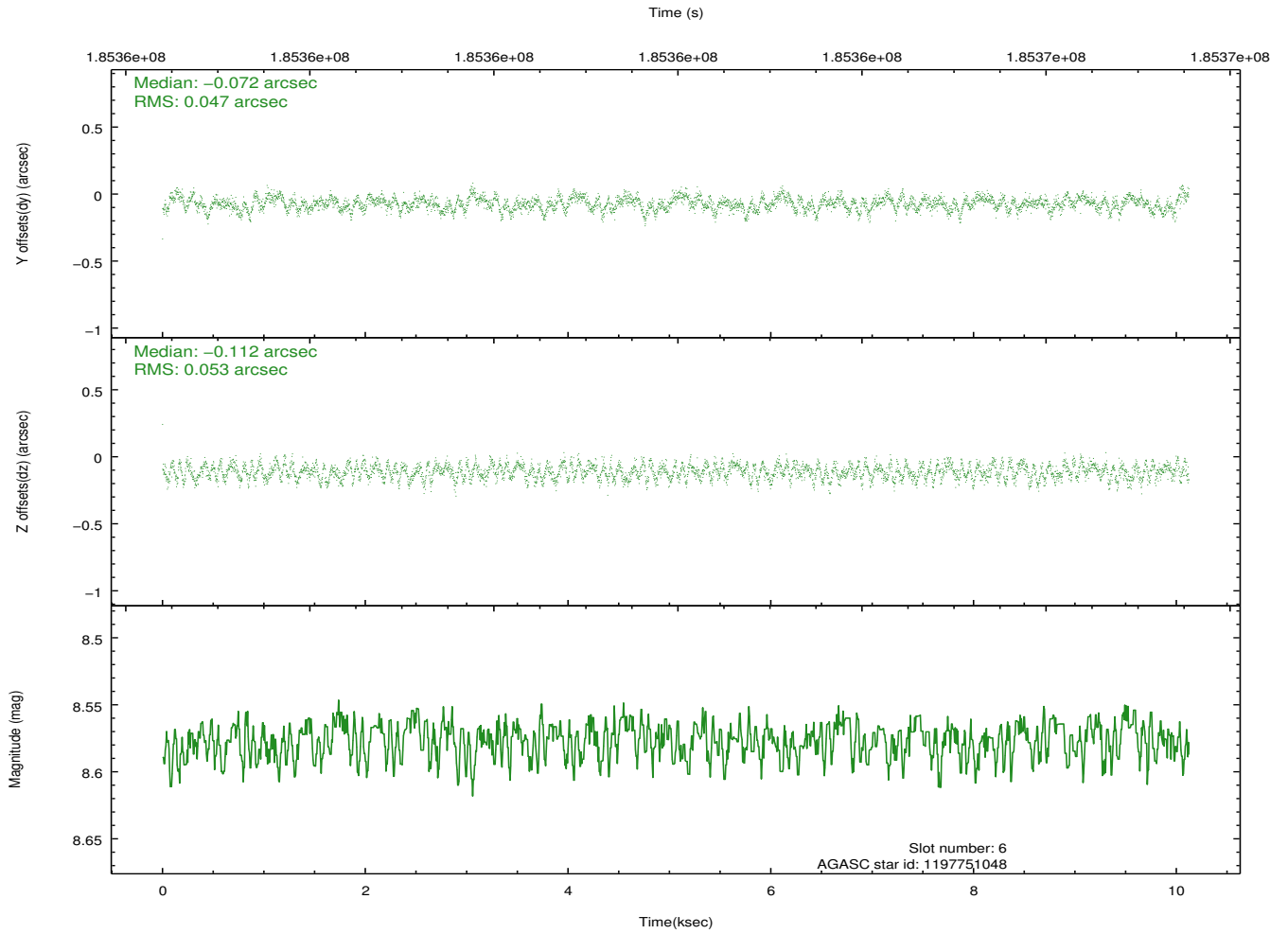
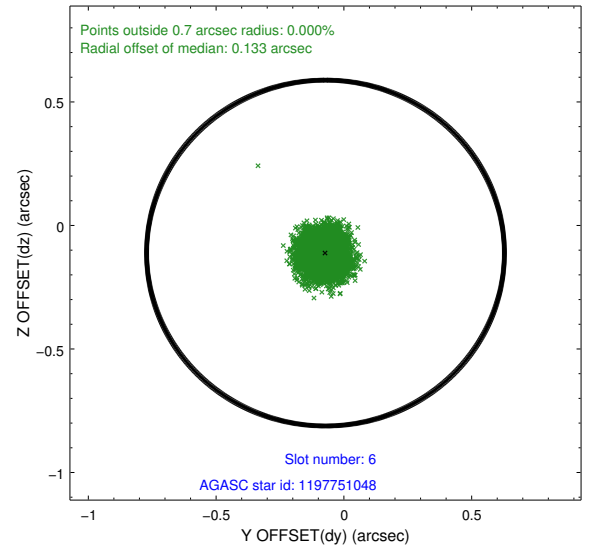
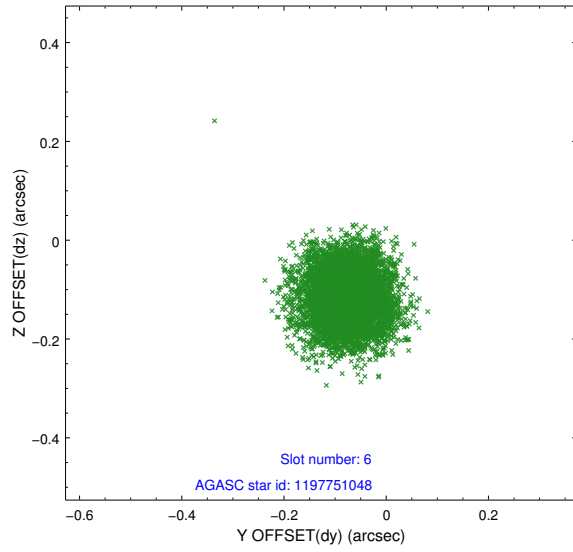
## 2.4.2 Slot 4



### 2.4.3 Slot 5

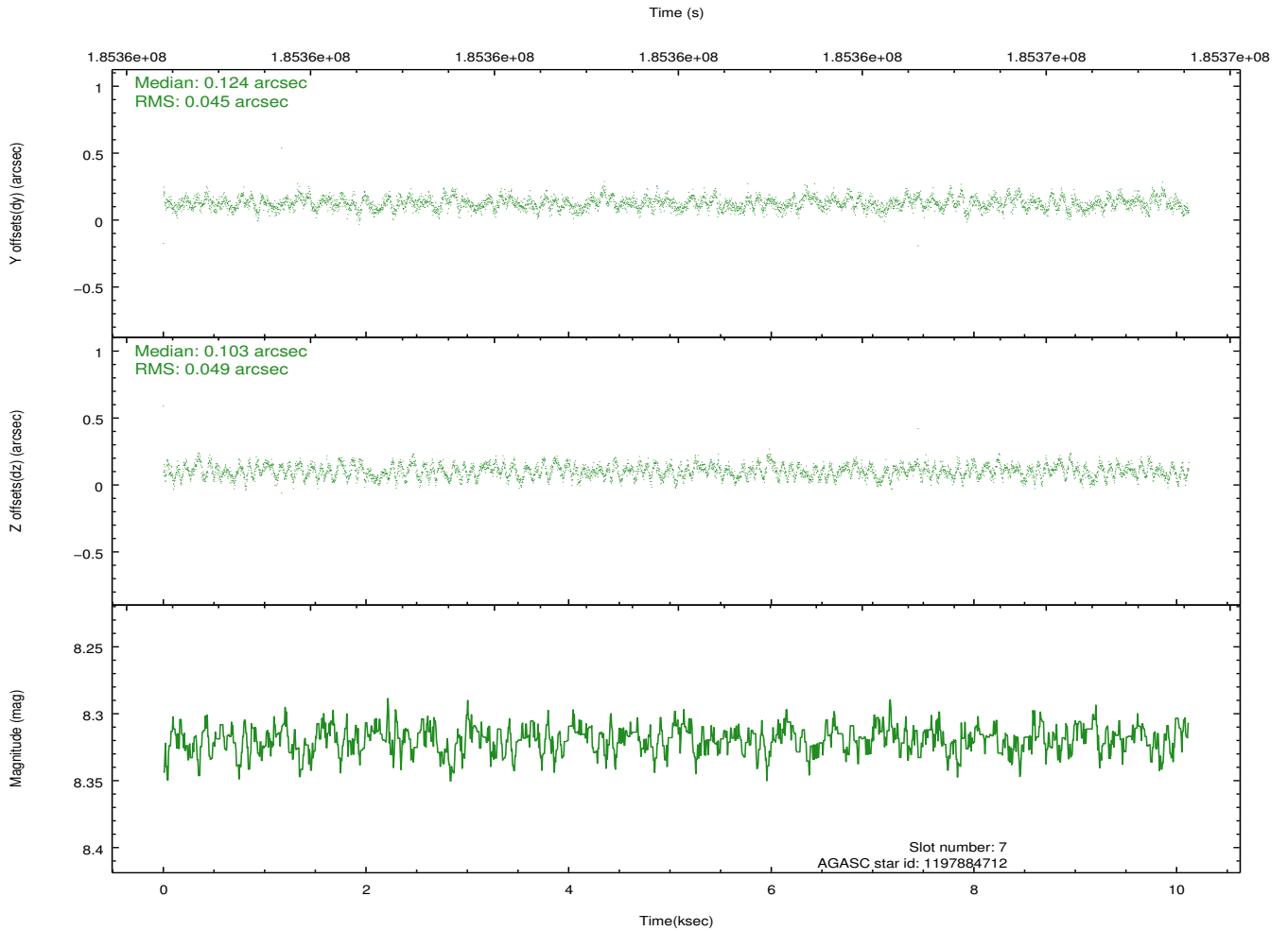
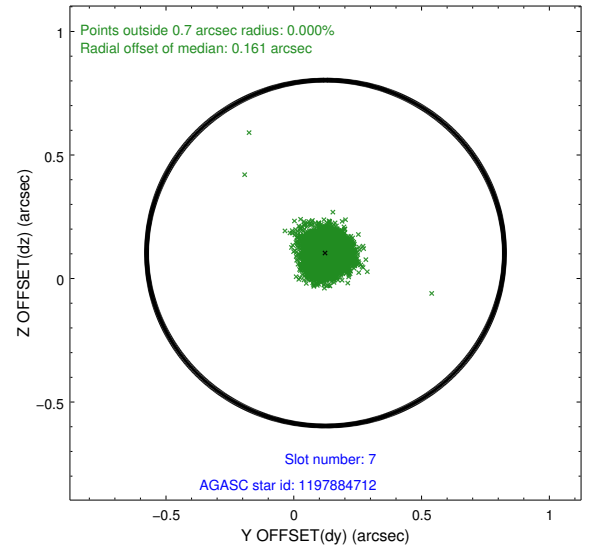
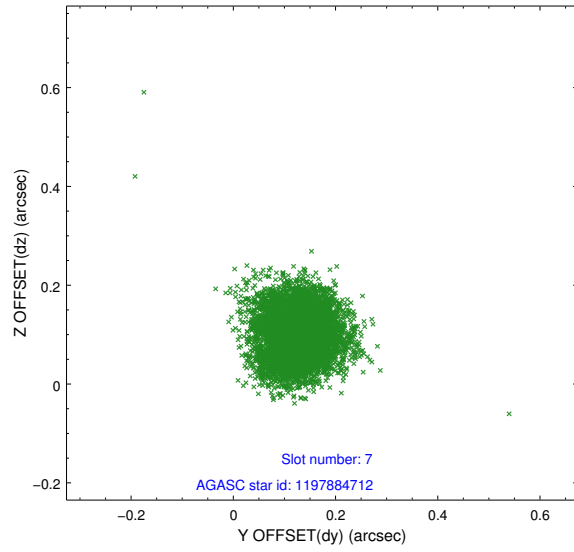


## 2.4.4 Slot 6



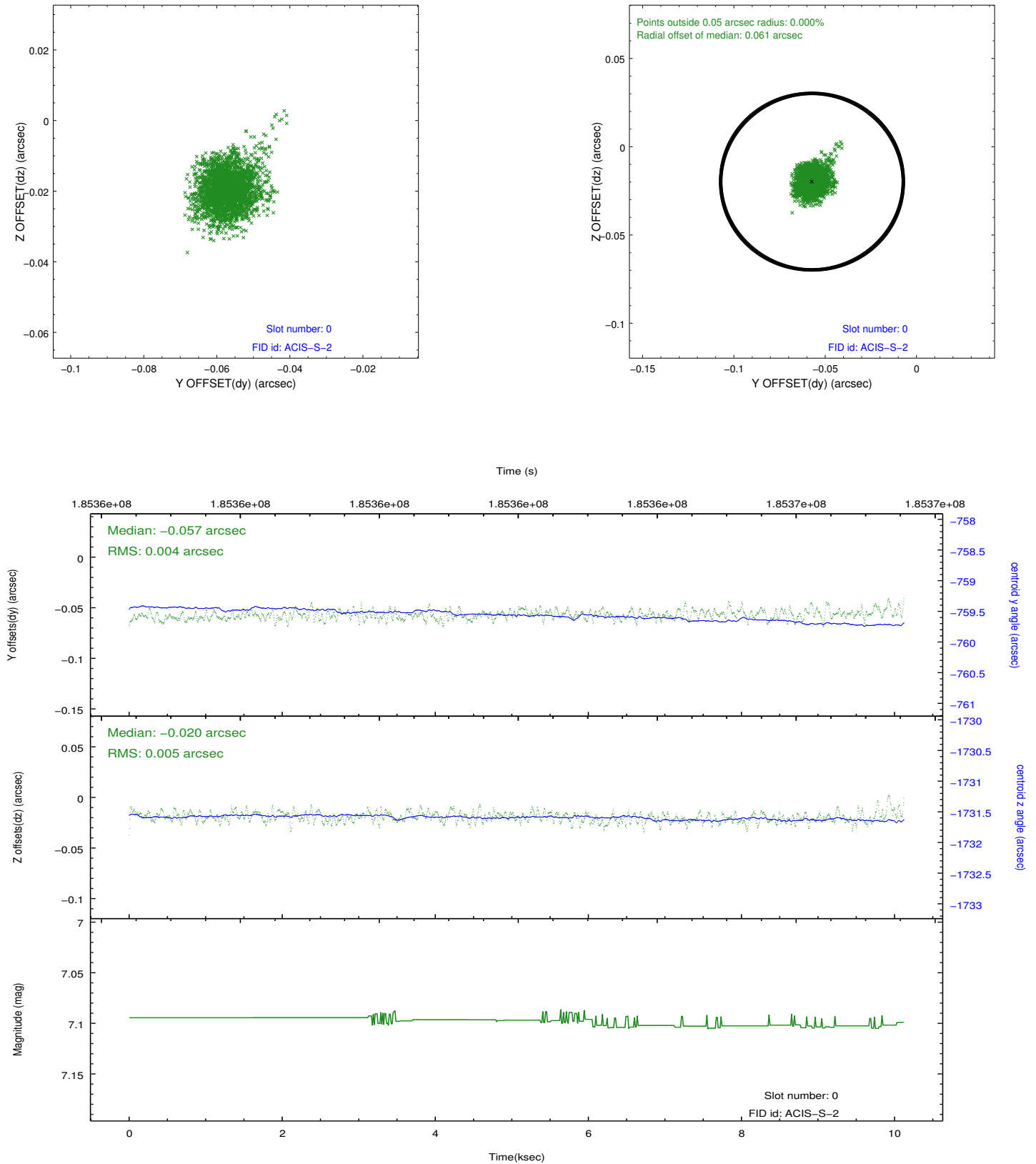


## 2.4.5 Slot 7

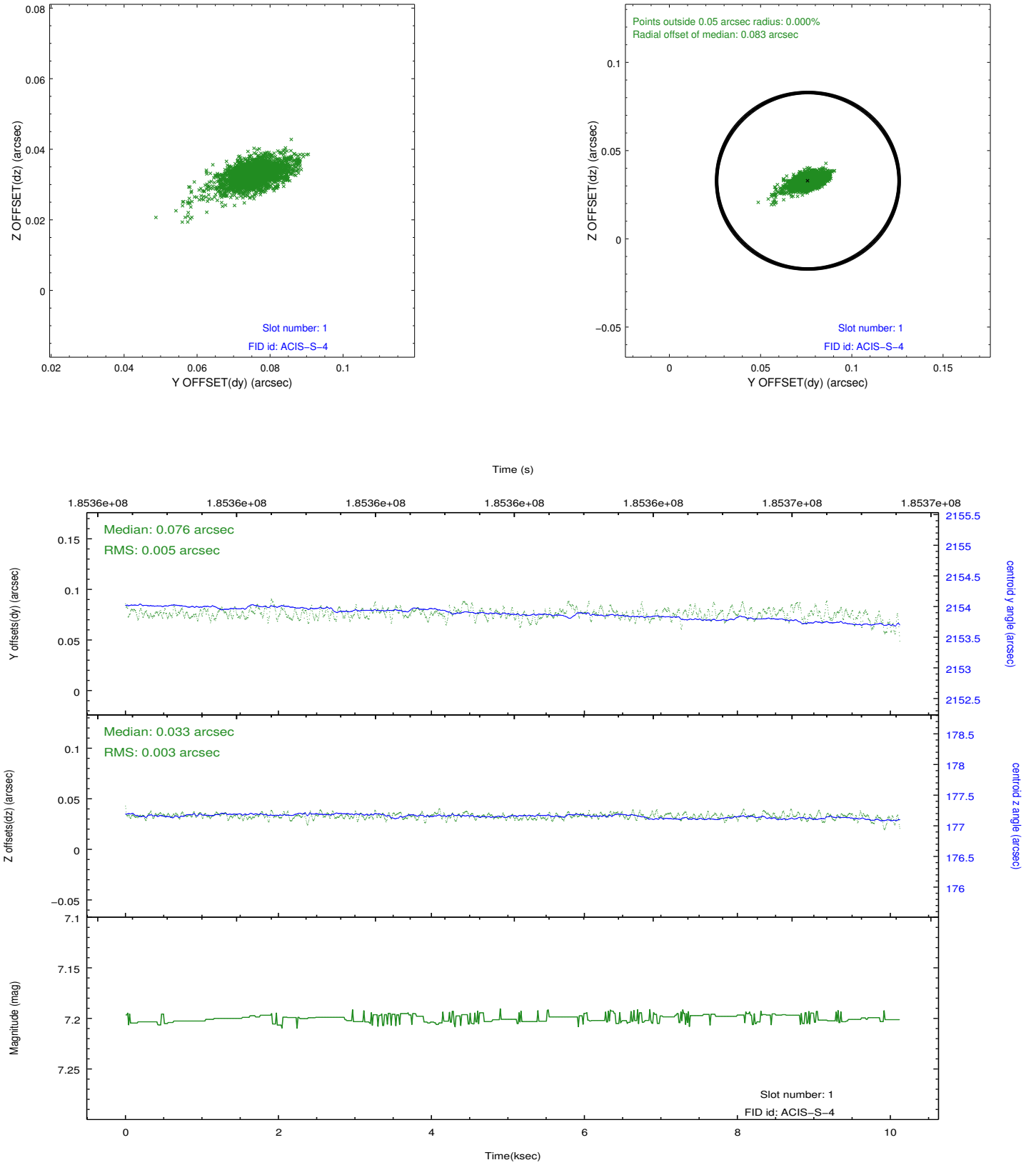


## 2.5 FID Slots

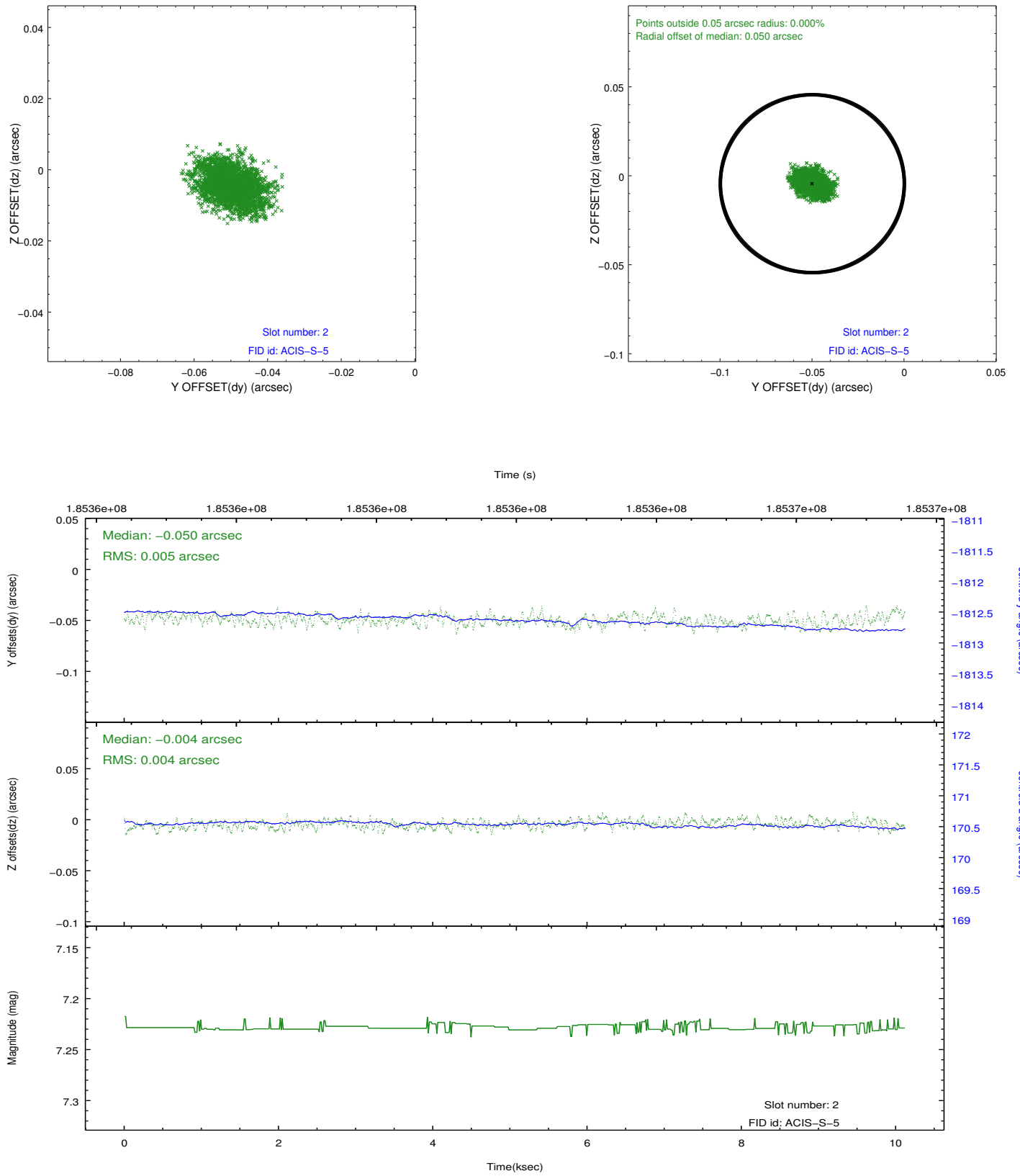
### 2.5.1 Slot 0



## 2.5.2 Slot 1



### 2.5.3 Slot 2



## **A Summary**

### **A.1 Status**

V&V Scientist	Jen Lauer
V&V Date (YYYY-MM-DD)	2012.12.02
V&V Edition	1
V&V Disposition and Status	OK
V&V Charge Time	10.121

### **A.2 Comments**