

V&V Reference Report

L2 ASCDS Version : 7.6.8.1

Observation 4400 - L2 Version 001
Chandra X-Ray Center

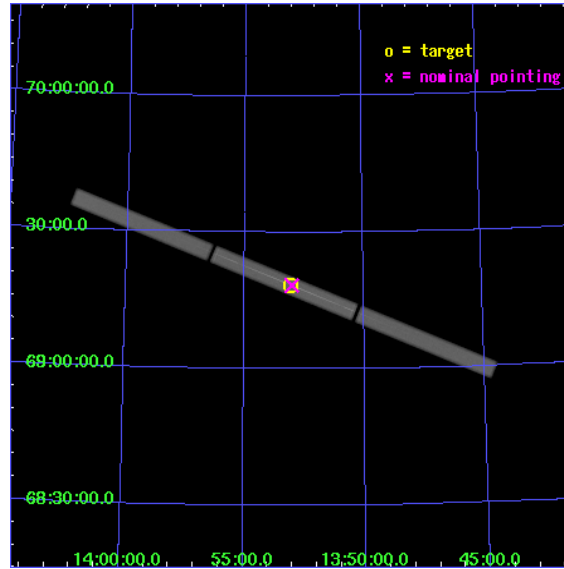
L2 Processing Date : Aug 12 2006

Contents

1	Front	2
2	OBI	3
2.1	OBI	3
2.1.1	Images	3
2.1.2	Parameters	4
2.1.3	Events	4
2.2	Compared Parameters	5
2.3	Aspect	6
2.4	Star Slots	9
2.4.1	Slot 3	9
2.4.2	Slot 4	10
2.4.3	Slot 5	11
2.4.4	Slot 6	12
2.4.5	Slot 7	13
2.5	FID Slots	14
2.5.1	Slot 0	14
2.5.2	Slot 1	15
2.5.3	Slot 2	16
3	Gratings	17
3.1	LETG Arm	17
A	Summary	19
A.1	Status	19
A.2	Comments	19

1 Front

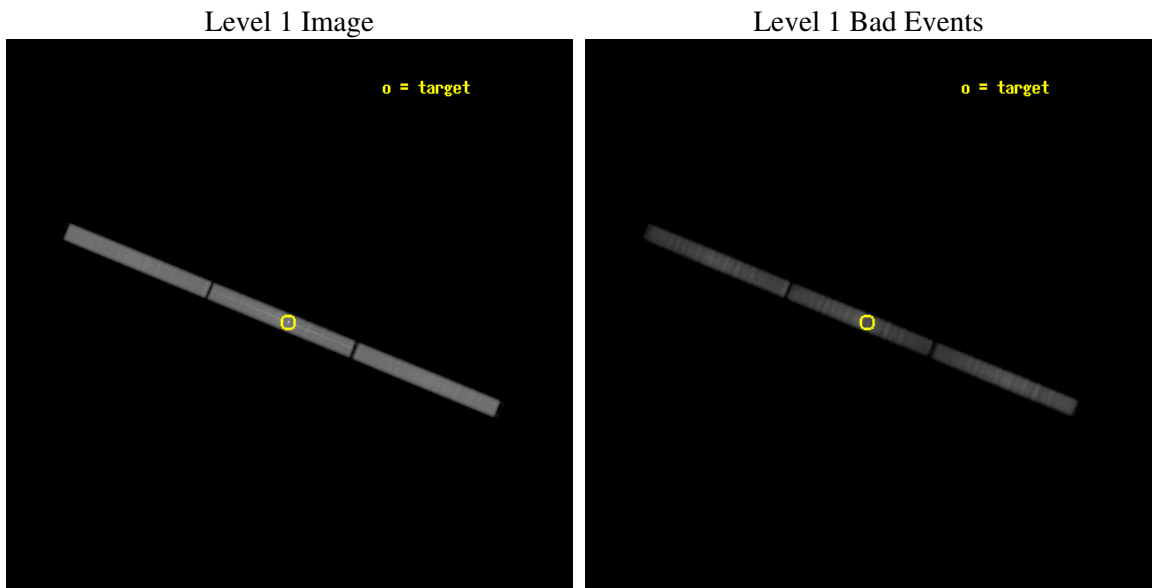
seq_num	700706
obs_id	4400
title	CONNECTING THE X-RAY AND UV IONIZED ABSORBERS IN MRK 279
observer	Dr. Jelle Kaastra
object	MRK 279
ra_targ	208.264583
dec_targ	69.308111
ra_nom	208.2522425323
dec_nom	69.306446722496
roll_nom	202.07888211329
revision	2
ontime	46481.958217651
livetime	46221.441249993
l2events	1920113



2 OBI

2.1 OBI

2.1.1 Images



2.1.2 Parameters

obi_num	1
ascdsver	7.6.8.1
caldbver	3.2.3
date	2006-08-11T22:57:36
revision	2

sched_exp_time	46500.000000
ontime	46561.651971012
l1events	2984308

2.1.3 Events

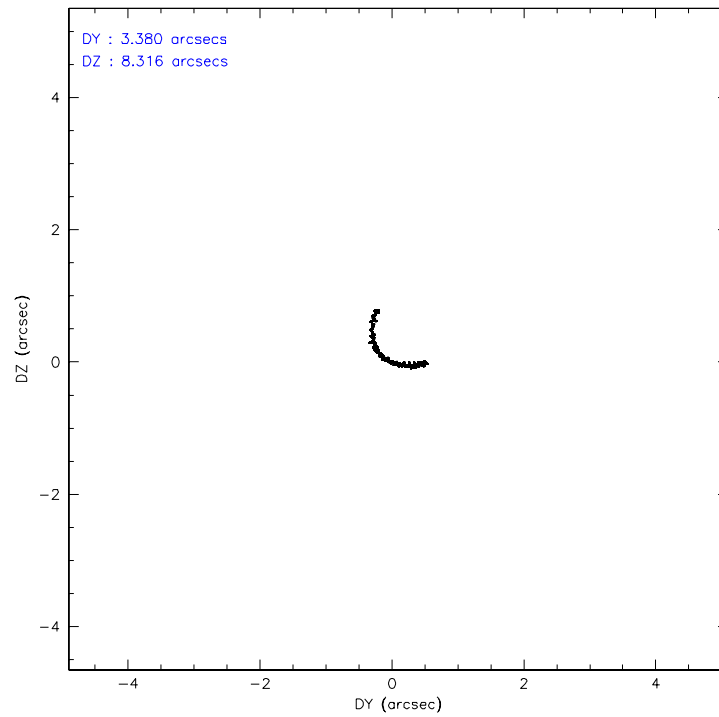
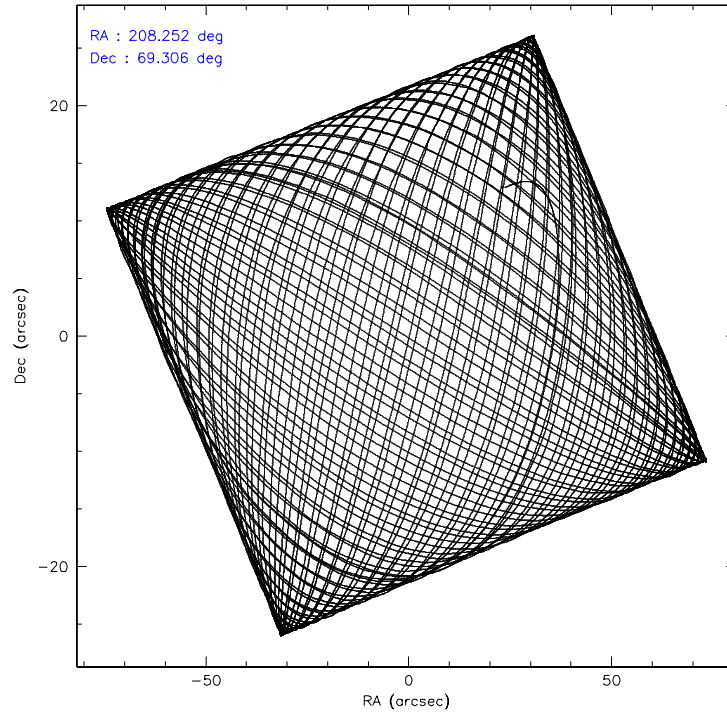
Level 1 Events

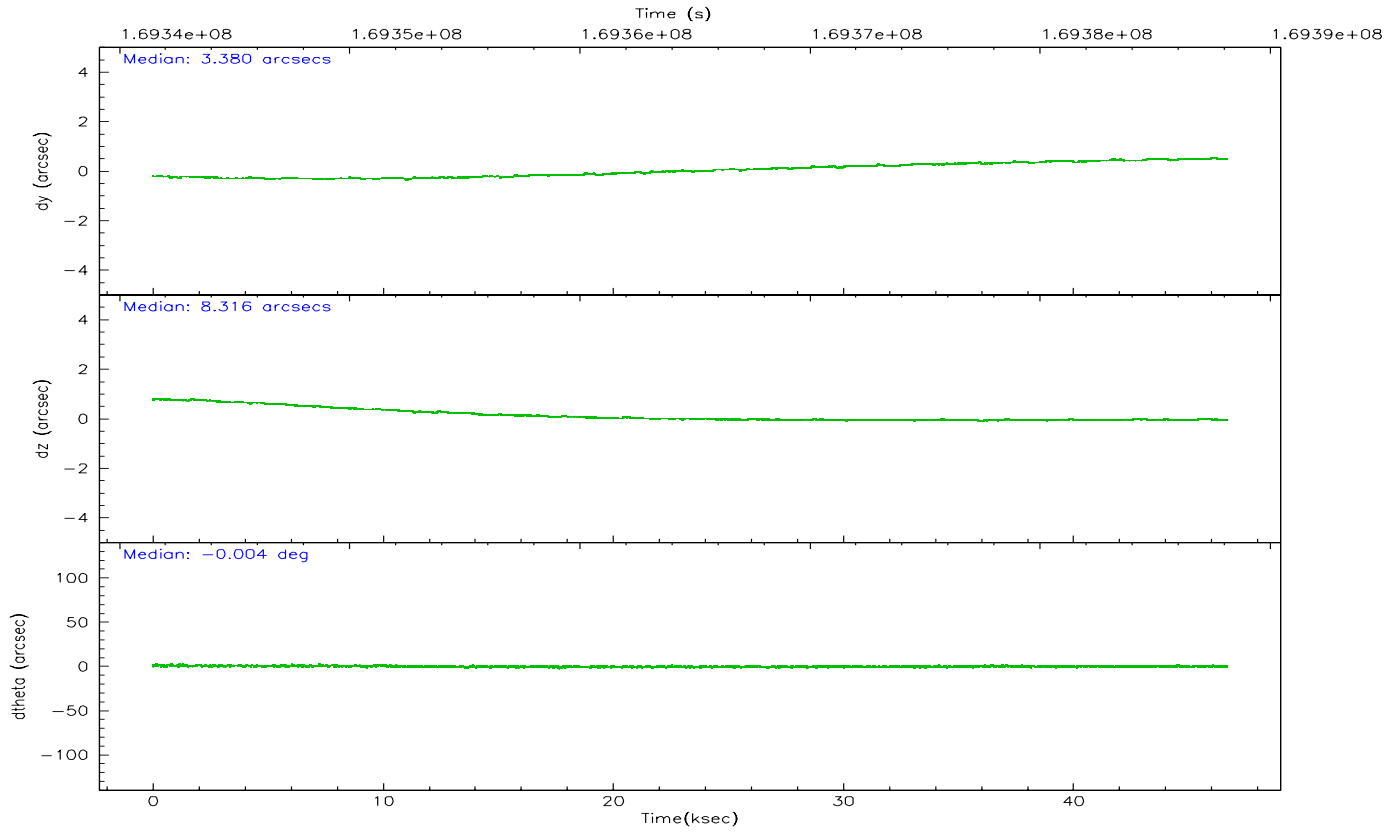
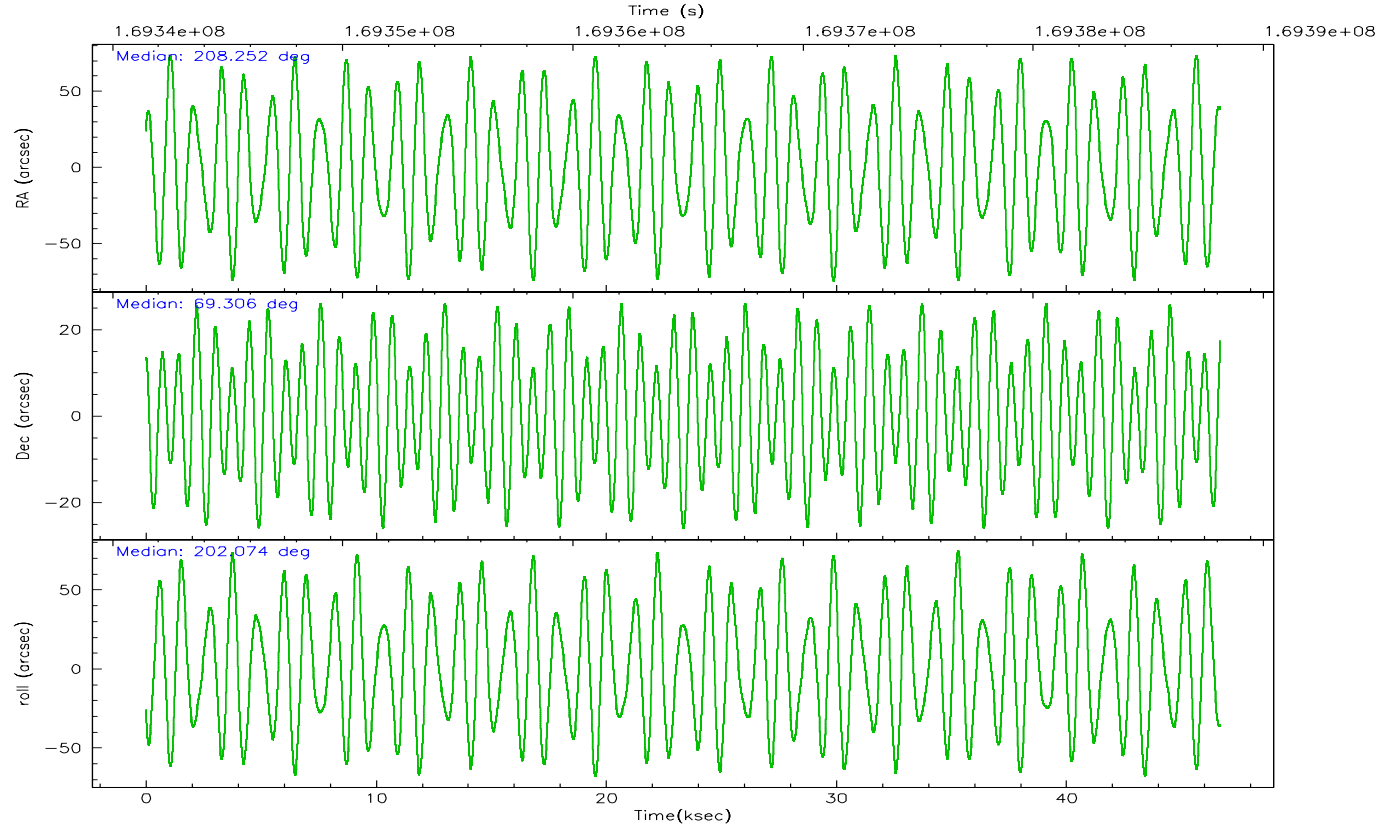
	segment 1	segment 2	segment 3
level 1 events	975708	1026745	981855
rejected events	242525	259632	288341
rejected %	24%	25%	29%

2.2 Compared Parameters

Parameter	Planned	Actual	Parameter	Planned	Actual
Instrument	HRC	HRC	Obspar format version number	6	6
Detector	HRC-S	HRC-S	Obspar file type	PREDICTED	ACTUAL
Grating	LETG	LETG	Obspar update status	NONE	UPDATED
Data mode	OBSERVING	OBSERVING			
Observation mode	POINTING	POINTING			
Pointing RA	208.298736	208.2522425323049			
Pointing Dec	69.329880	69.30644672249588			
Pointing Roll	201.968040	202.0788821132914			
SIM focus pos (mm)	-1.429586	-1.428180813131781			
SIM defocus (mm)	0.1037507710433287	0.1051558262725154			
SIM translation stage pos (mm)	250.455976	250.466033080201			
SIM translation stage offset (mm)	0	-0.01005468664627074			
Observation start time	169341633.184000	169340634.51686			
Observation start date	2003-05-14T23:19:29	2003-05-14T23:03:54			
Observation end time	169388133.184000	169389828.88144			
Observation end date	2003-05-15T12:14:29	2003-05-15T12:43:48			

2.3 Aspect



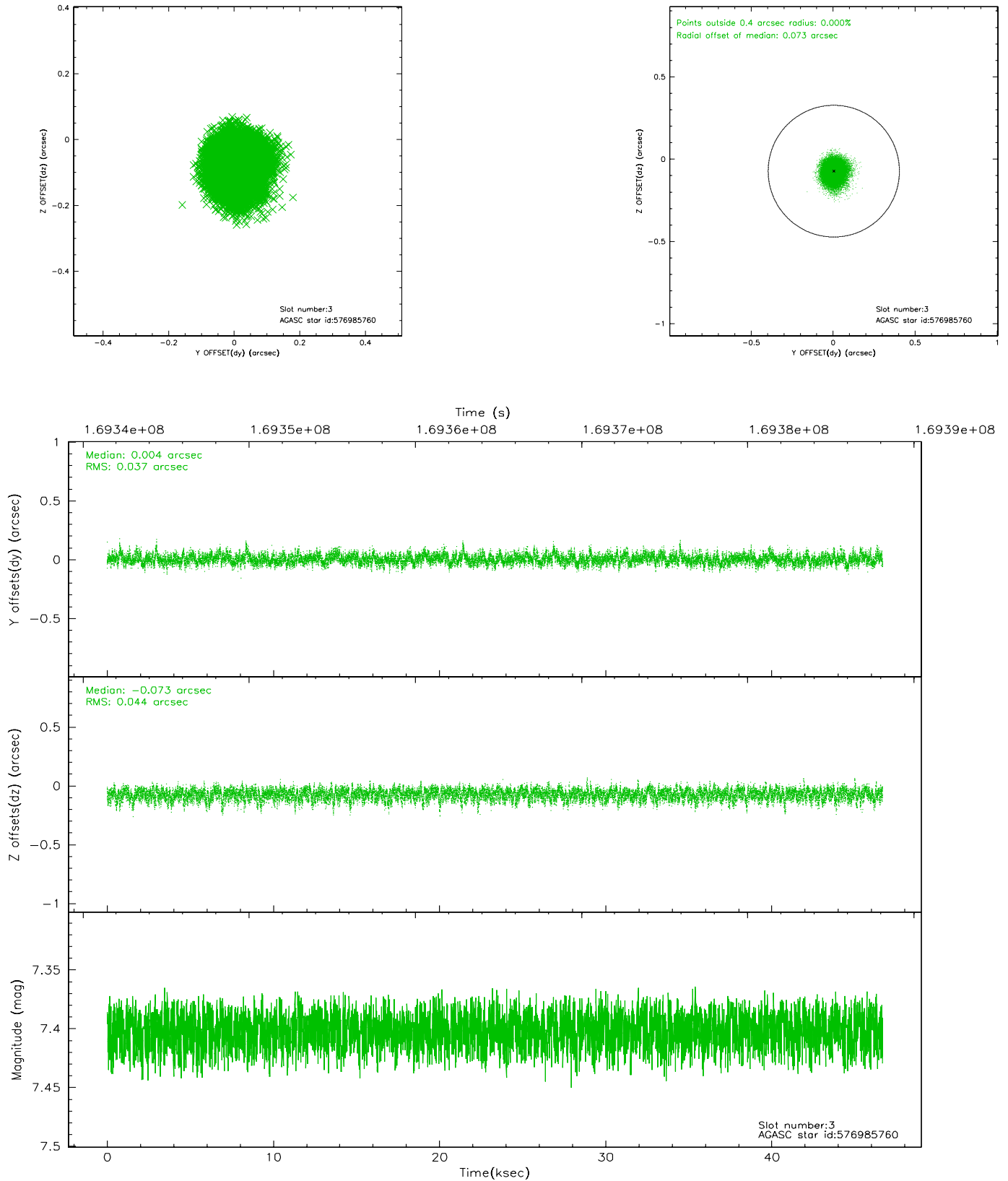


Slot Statistics

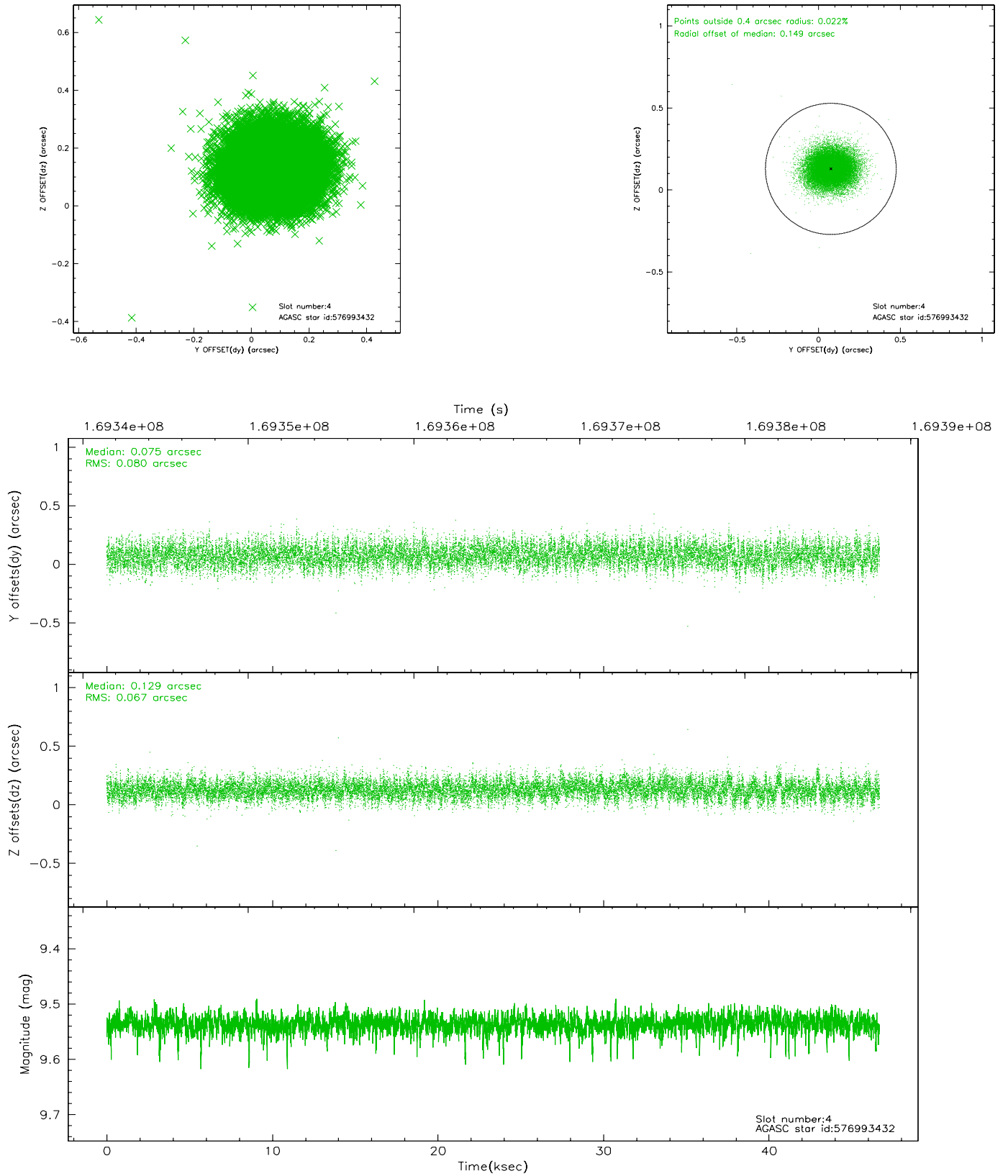
slot	status	id	mag	n_pts	med_dy	med_dz	dr1	dr2	ra	dec	mean_y	mean_z
0	FID	HRC-S-1	6.98	11385	0.143	-0.121	0.014	0.033	0.000000	0.000000	-1157.45	-457.06
1	FID	HRC-S-2	6.98	11386	0.100	-0.093	0.010	0.031	0.000000	0.000000	1242.08	-449.70
2	FID	HRC-S-3	7.00	11386	0.149	-0.089	0.015	0.037	0.000000	0.000000	-1160.06	572.47
3	GUIDE	576985760	7.40	22771	0.004	-0.073	0.061	0.099	207.721529	69.153363	922.28	309.61
4	GUIDE	576993432	9.54	22754	0.075	0.129	0.111	0.178	207.256317	68.646298	2183.68	1760.66
5	GUIDE	577120624	7.14	22773	-0.092	-0.047	0.063	0.100	208.865374	69.935124	-1465.07	-1761.97
6	GUIDE	577121192	7.88	22770	0.015	0.031	0.075	0.129	208.693523	69.547622	-754.25	-542.67
7	GUIDE	577124216	10.10	22593	0.001	-0.039	0.149	0.252	209.315908	68.857467	-592.67	2060.94

2.4 Star Slots

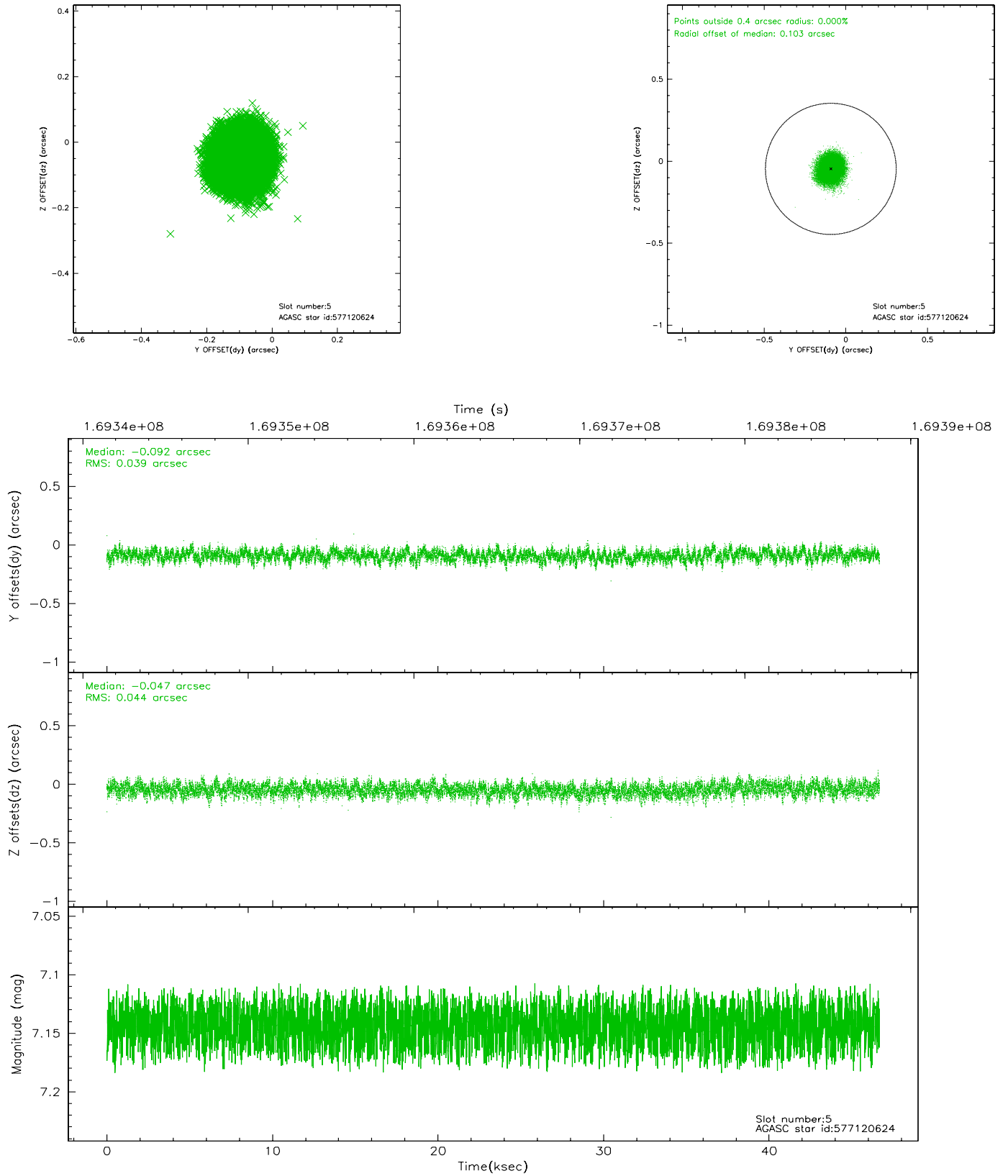
2.4.1 Slot 3



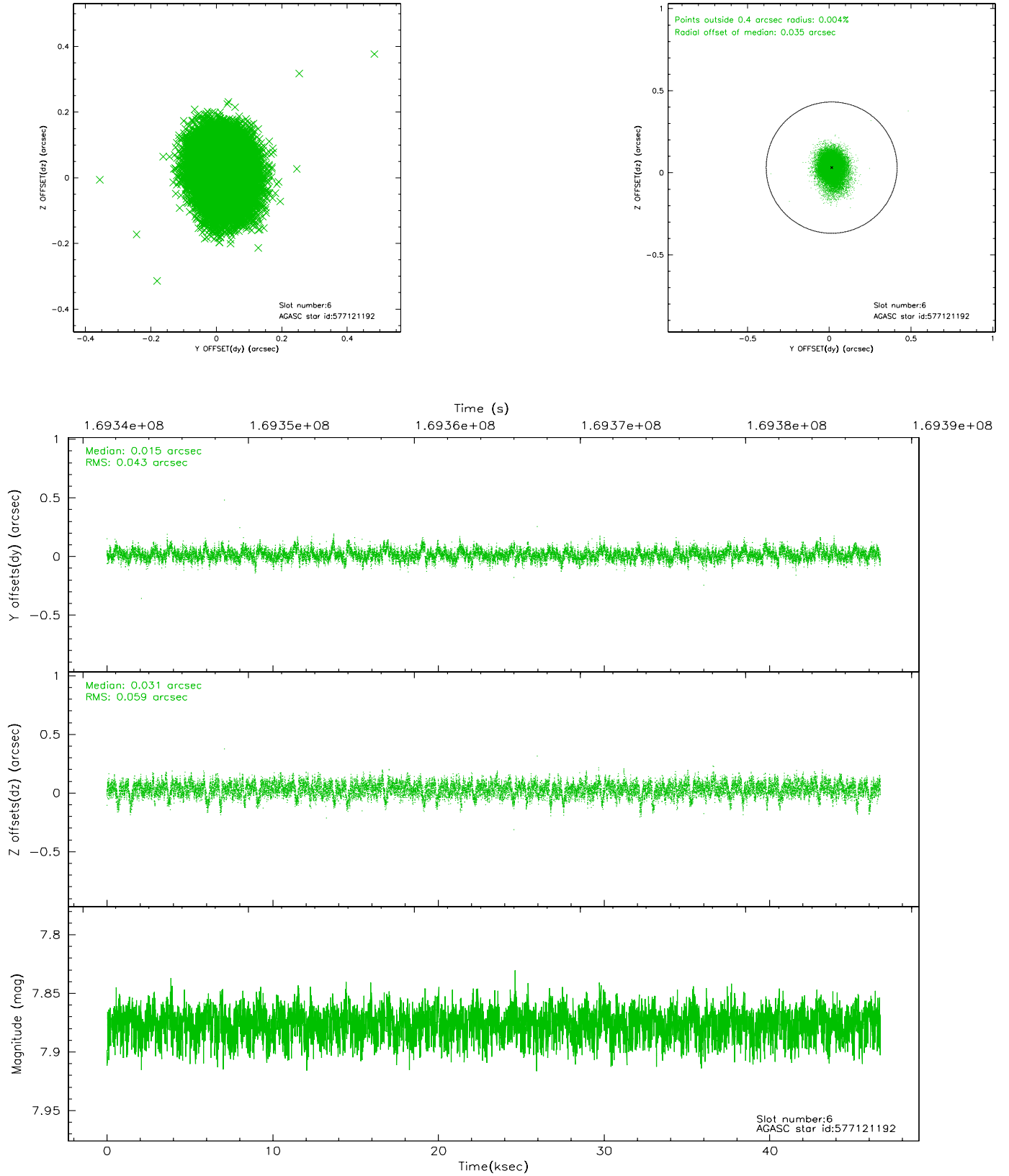
2.4.2 Slot 4



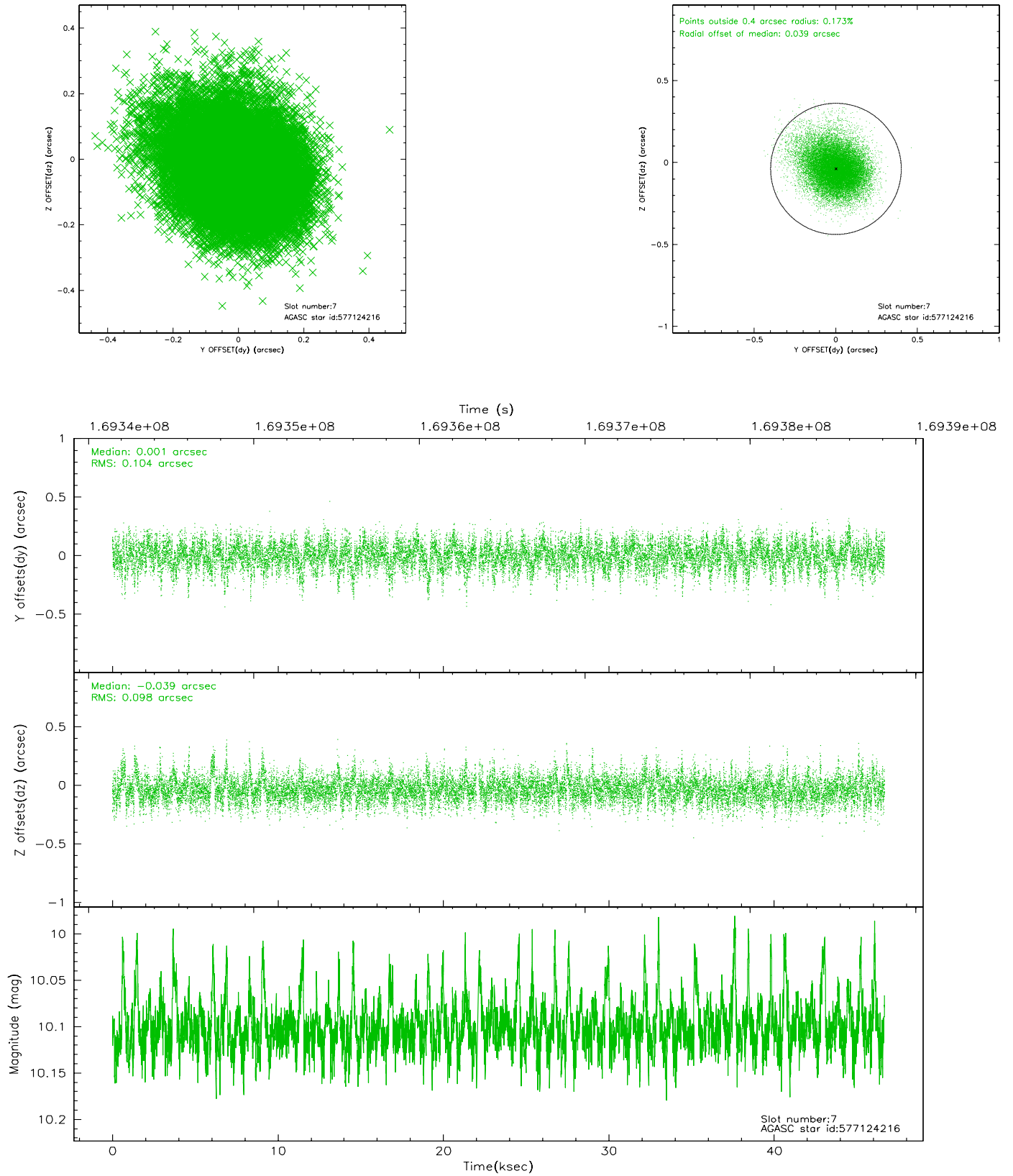
2.4.3 Slot 5



2.4.4 Slot 6

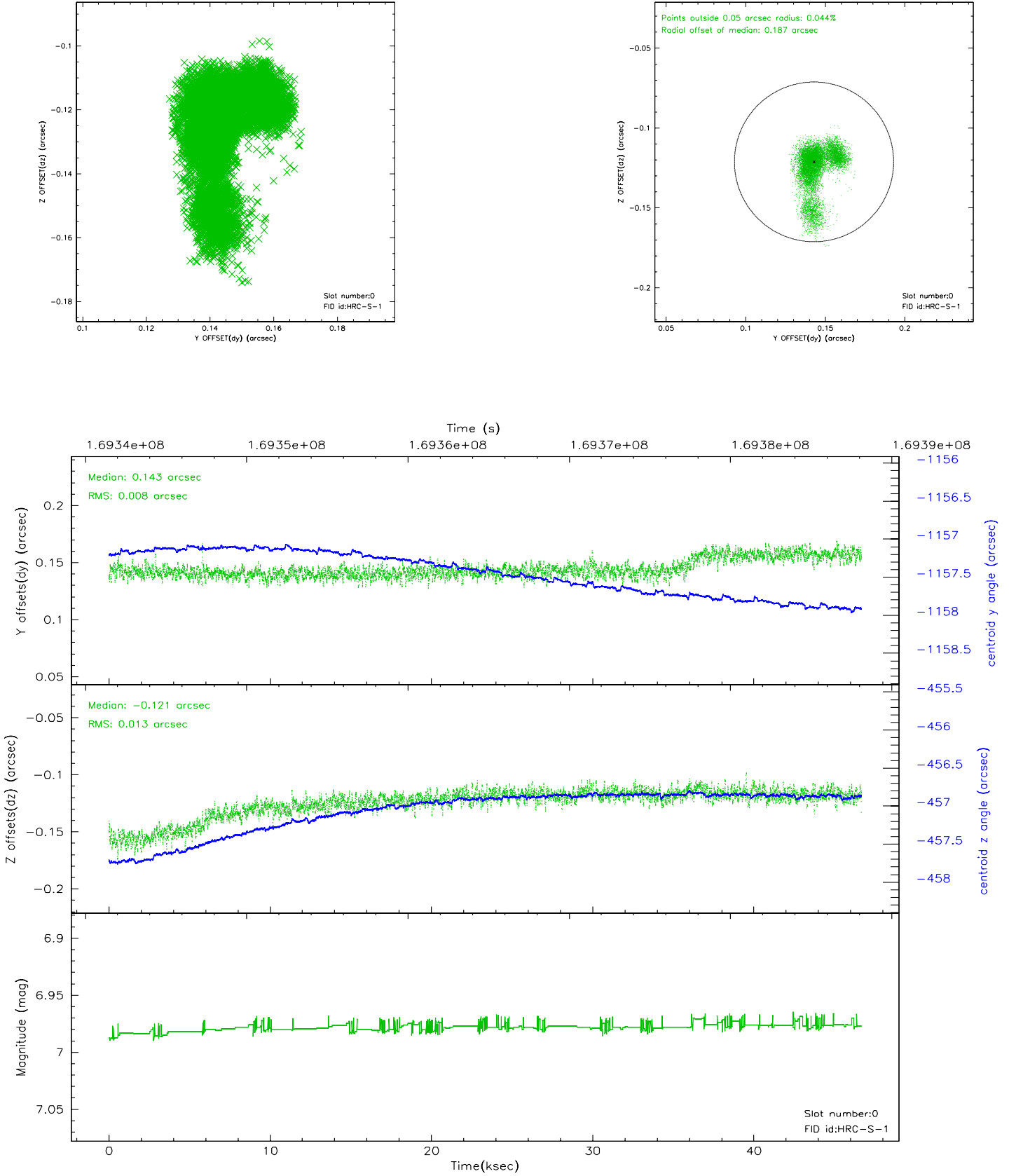


2.4.5 Slot 7

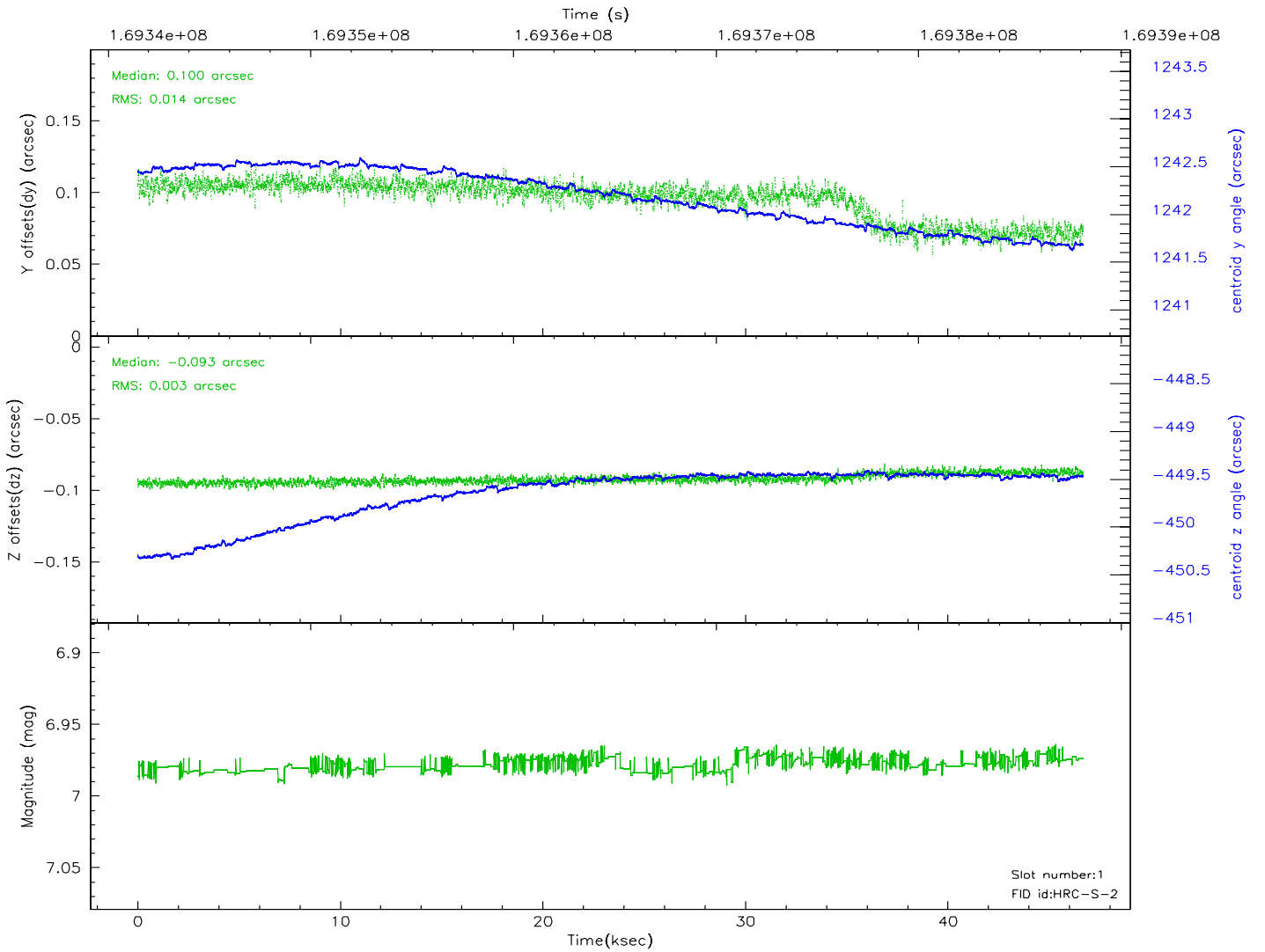
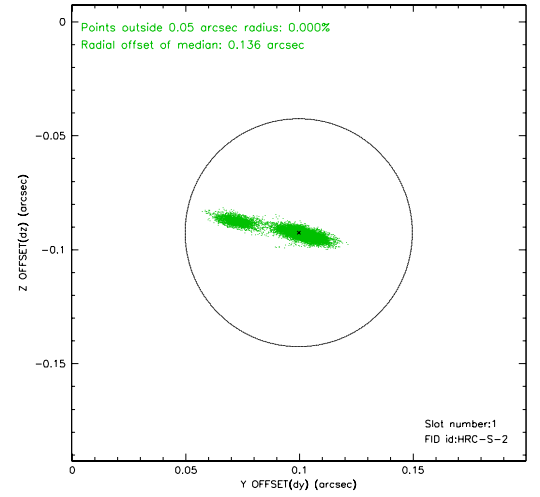
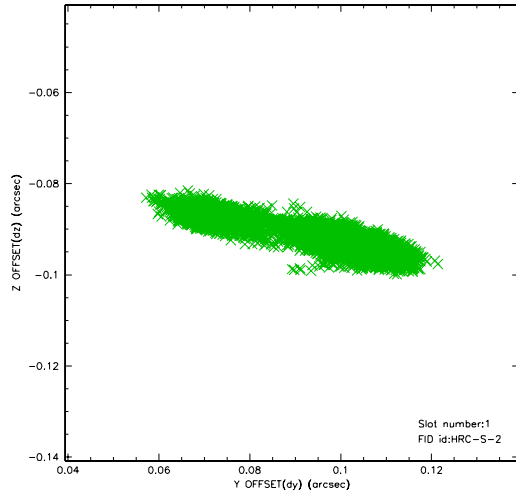


2.5 FID Slots

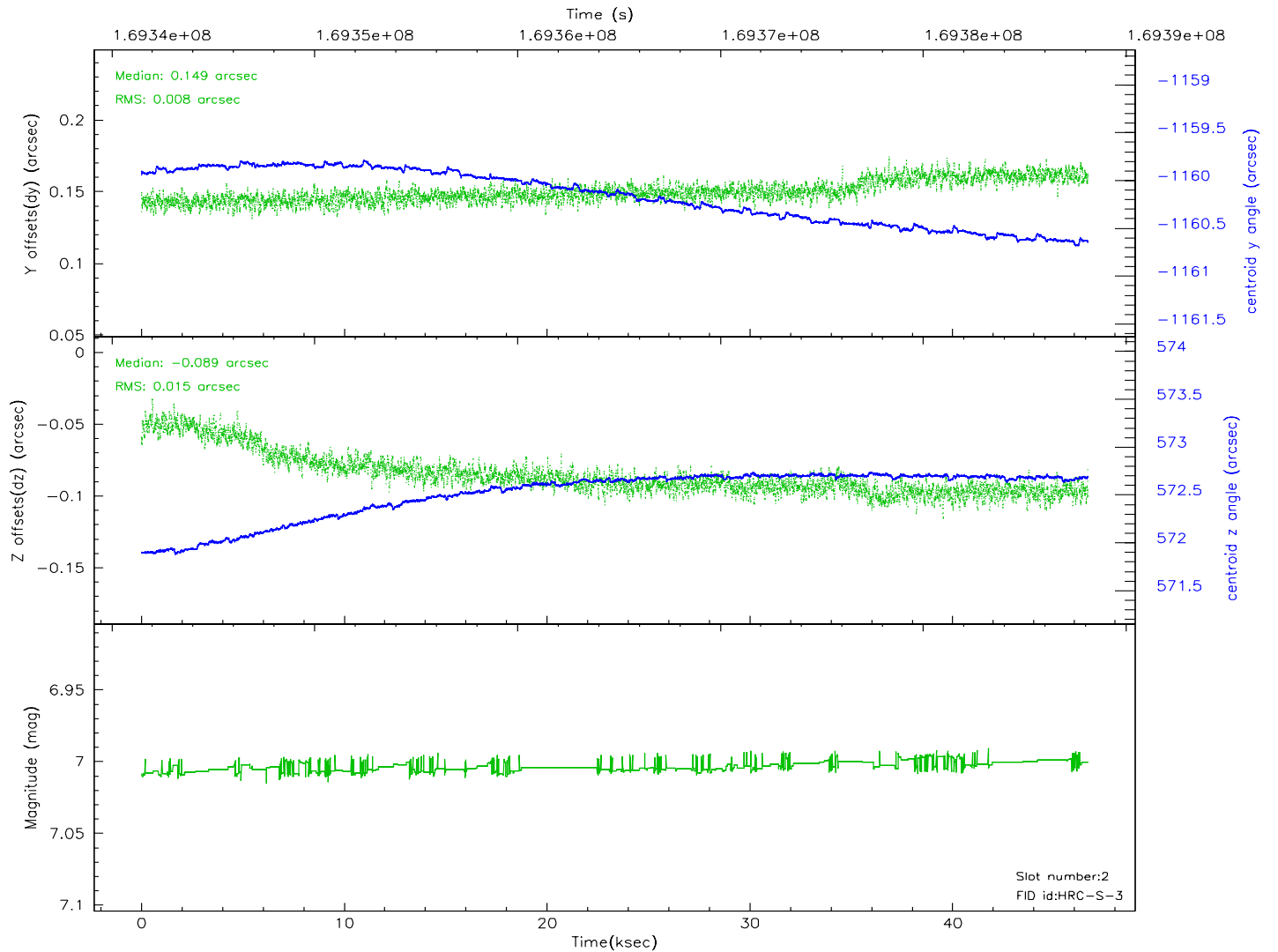
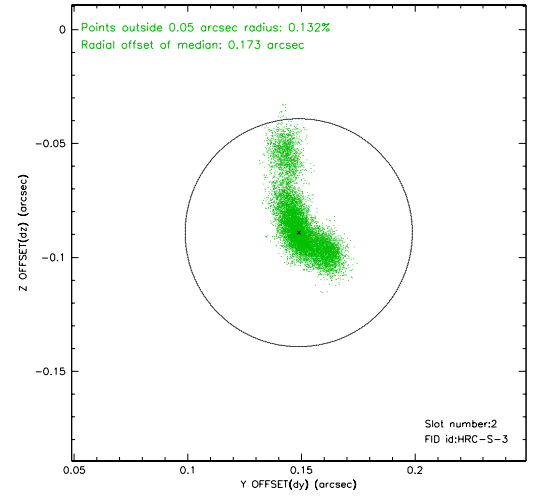
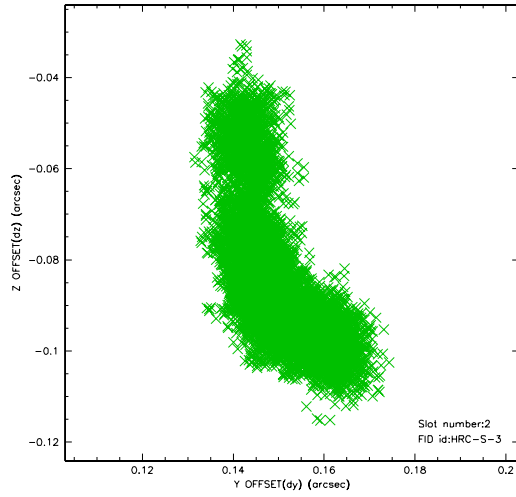
2.5.1 Slot 0



2.5.2 Slot 1

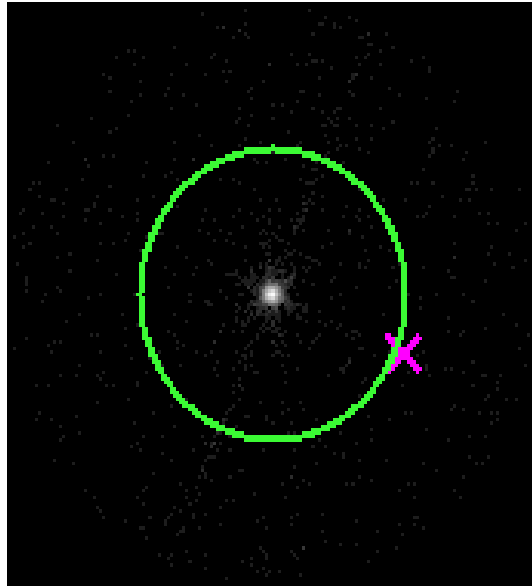


2.5.3 Slot 2

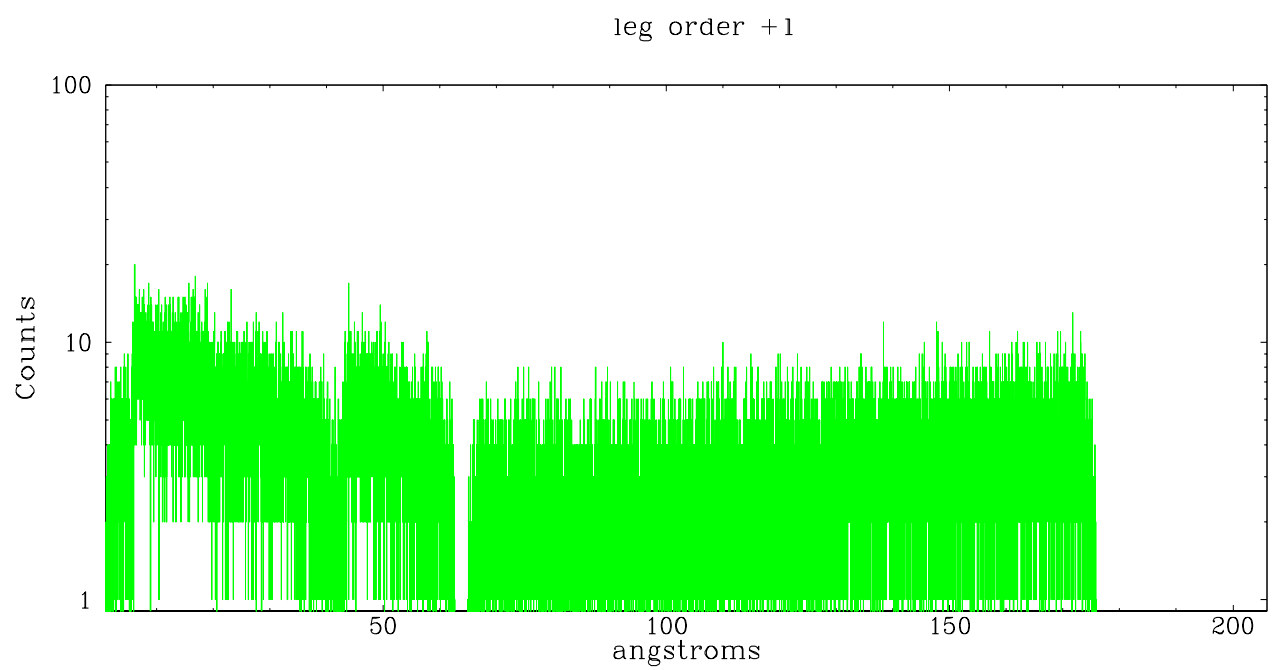
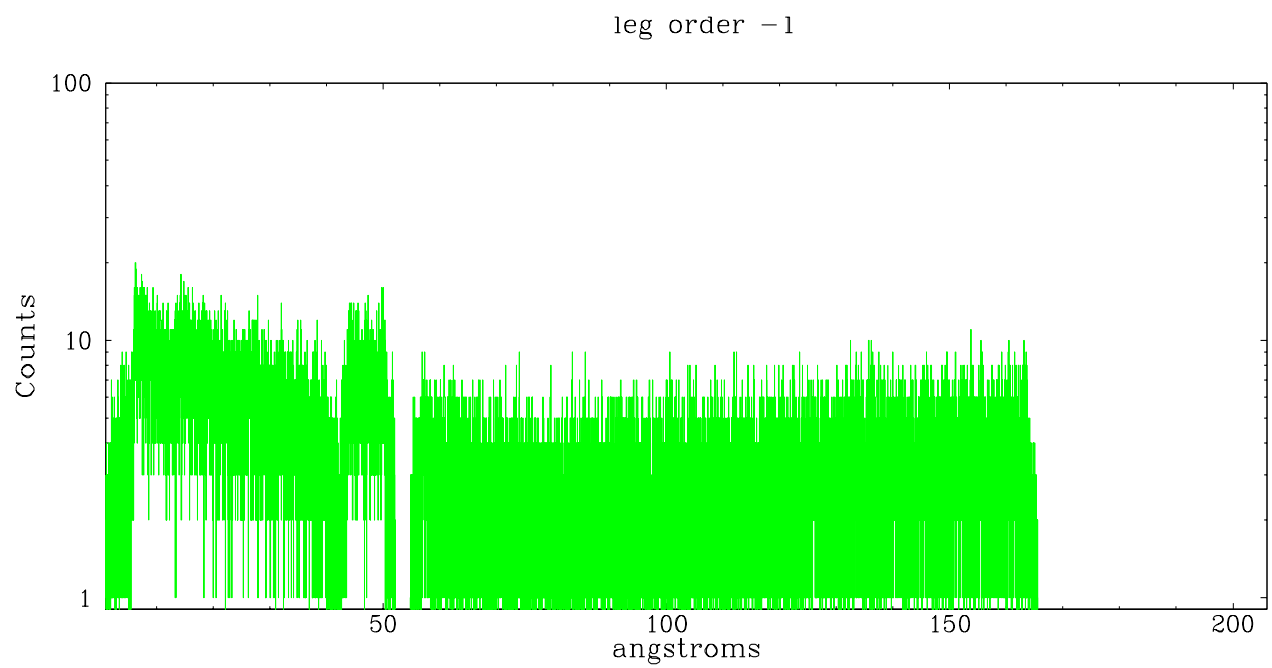


3 Gratings

3.1 LETG Arm



LETG Zero Order



A Summary

A.1 Status

V&V Scientist	Jen Lauer
V&V Date (YYYY-MM-DD)	2006.08.13
V&V Edition	1
V&V Disposition and Status	OK
V&V Charge Time	46.481

A.2 Comments