

# V&V Reference Report

## L2 ASCDS Version : 7.6.8.1

Observation 4390 - L2 Version 001  
Chandra X-Ray Center

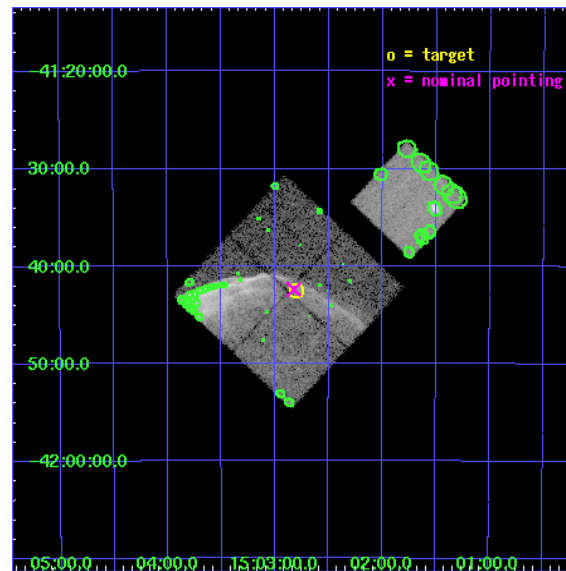
L2 Processing Date : Aug 4 2006

## Contents

<b>1</b>	<b>Front</b>	<b>2</b>
<b>2</b>	<b>OBI</b>	<b>3</b>
2.1	OBI . . . . .	3
2.1.1	Images . . . . .	3
2.1.2	Bias . . . . .	3
2.1.3	Parameters . . . . .	4
2.1.4	Events . . . . .	4
2.2	Compared Parameters . . . . .	5
2.3	Aspect . . . . .	6
2.4	Star Slots . . . . .	9
2.4.1	Slot 3 . . . . .	9
2.4.2	Slot 4 . . . . .	10
2.4.3	Slot 5 . . . . .	11
2.4.4	Slot 6 . . . . .	12
2.4.5	Slot 7 . . . . .	13
2.5	FID Slots . . . . .	14
2.5.1	Slot 0 . . . . .	14
2.5.2	Slot 1 . . . . .	15
2.5.3	Slot 2 . . . . .	16
<b>3</b>	<b>Point Sources</b>	<b>17</b>
<b>A</b>	<b>Summary</b>	<b>18</b>
A.1	Status . . . . .	18
A.2	Comments . . . . .	18

# 1 Front

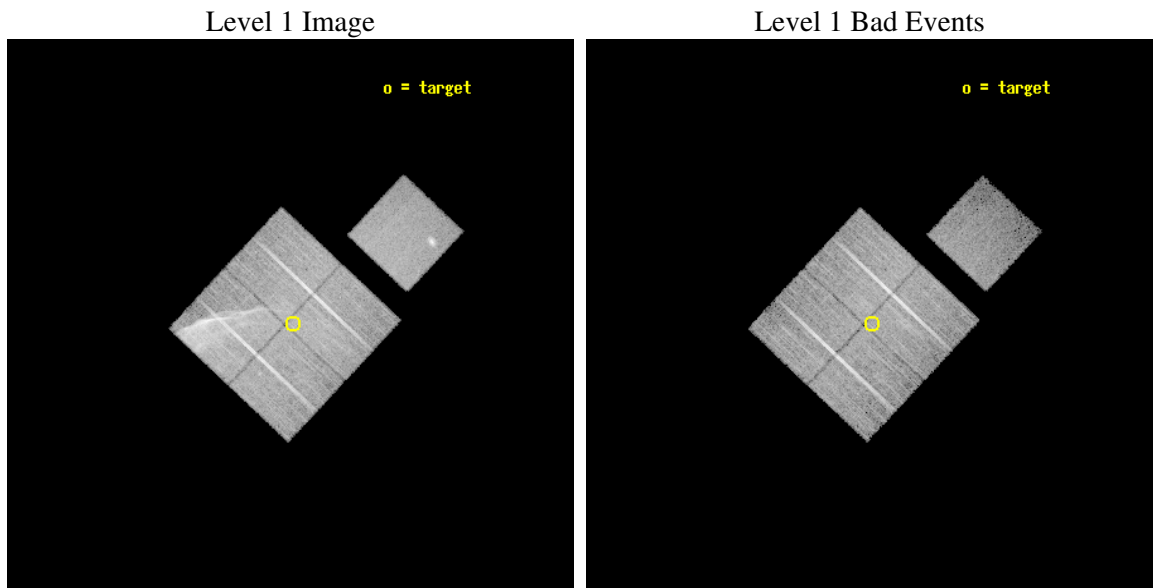
seq_num	500317
obs_id	4390
title	STUDYING HIGH MACH NUMBER SHOCKS IN YOUNG SUPERNOVA REMNANTS WITH CHANDRA
observer	Prof. John Hughes
object	SN1006
dtcycle	0
cycle	P
ra_targ	225.7
dec_targ	-41.7083
ra_nom	225.7058398246
dec_nom	-41.706683965202
roll_nom	43.212571949742
revision	2
ontime	20060.09996143
livetime	19797.999987403
ontime0	20047.536020517
ontime1	20056.958981156
ontime2	20056.958961308
ontime3	20060.09996143
ontime7	20056.958981216
l2events	146983



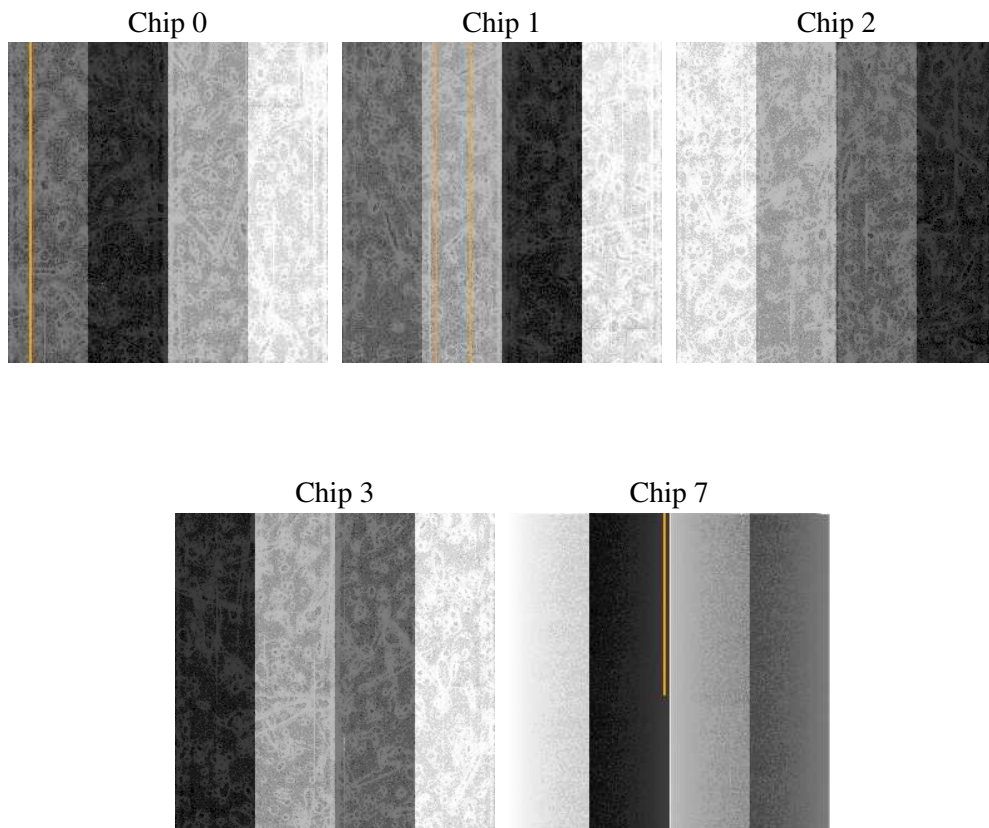
## 2 OBI

### 2.1 OBI

#### 2.1.1 Images



#### 2.1.2 Bias



### 2.1.3 Parameters

obi_num	0
ascdsver	7.6.8.1
caldsver	3.2.2
date	2006-08-04T16:15:05
revision	2

sched_exp_time	20284.754000
ontime	20064.770886987
ontime0	20052.206965983
ontime1	20061.629926622
ontime2	20061.629906774
ontime3	20064.770886987
ontime7	20061.629926682
l1events	572905

### 2.1.4 Events

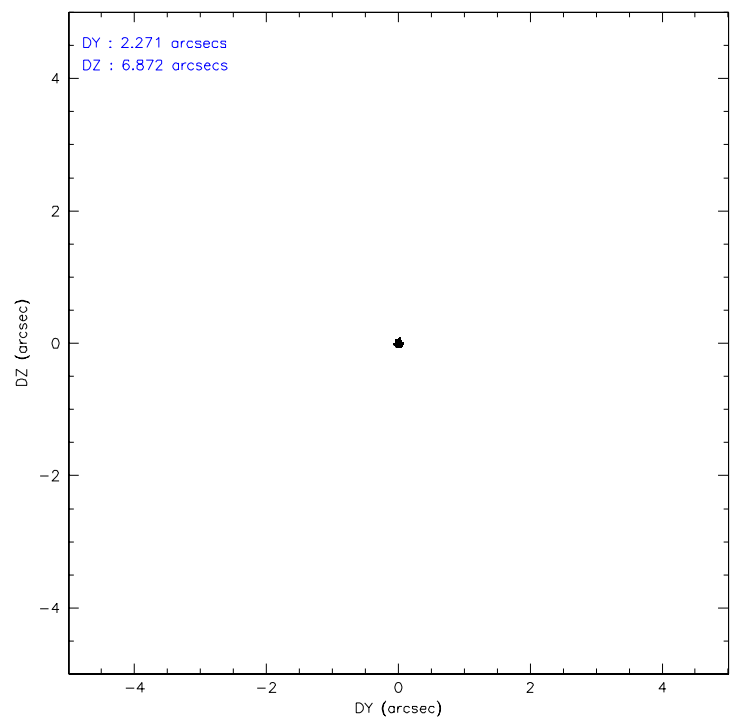
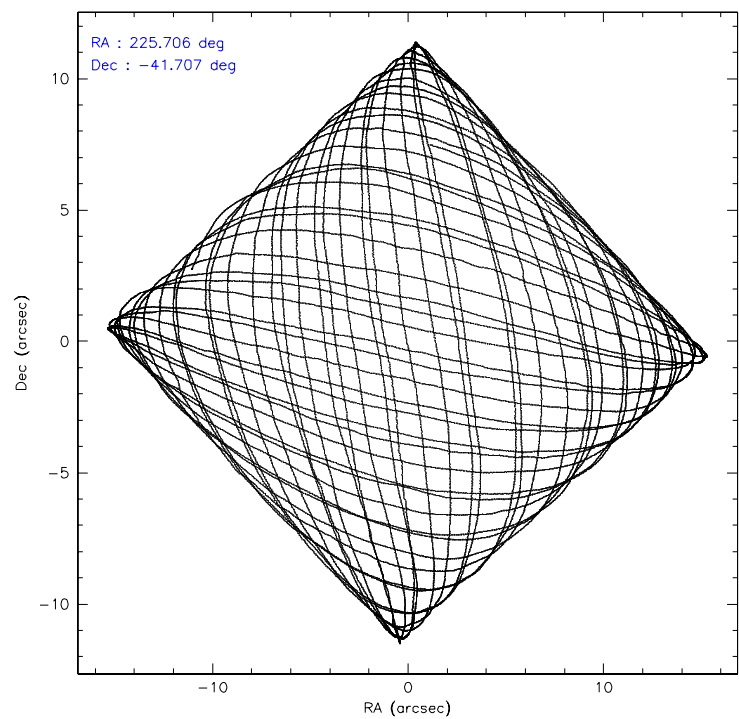
	ccd 0	ccd 1	ccd 2	ccd 3	ccd 7
level 1 events	148990	105268	109433	110737	98477
rejected events	85408	84554	97958	92500	53798
rejected %	57%	80%	89%	83%	54%

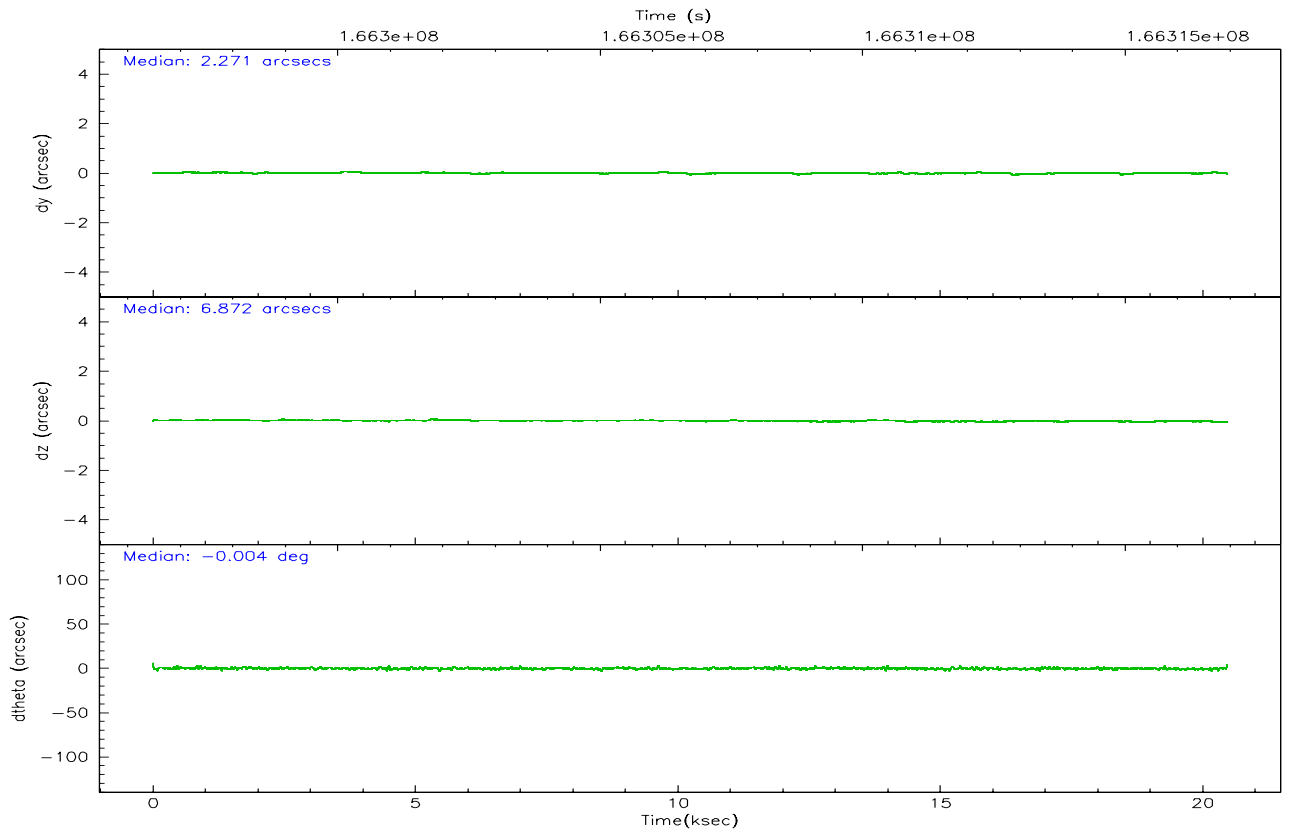
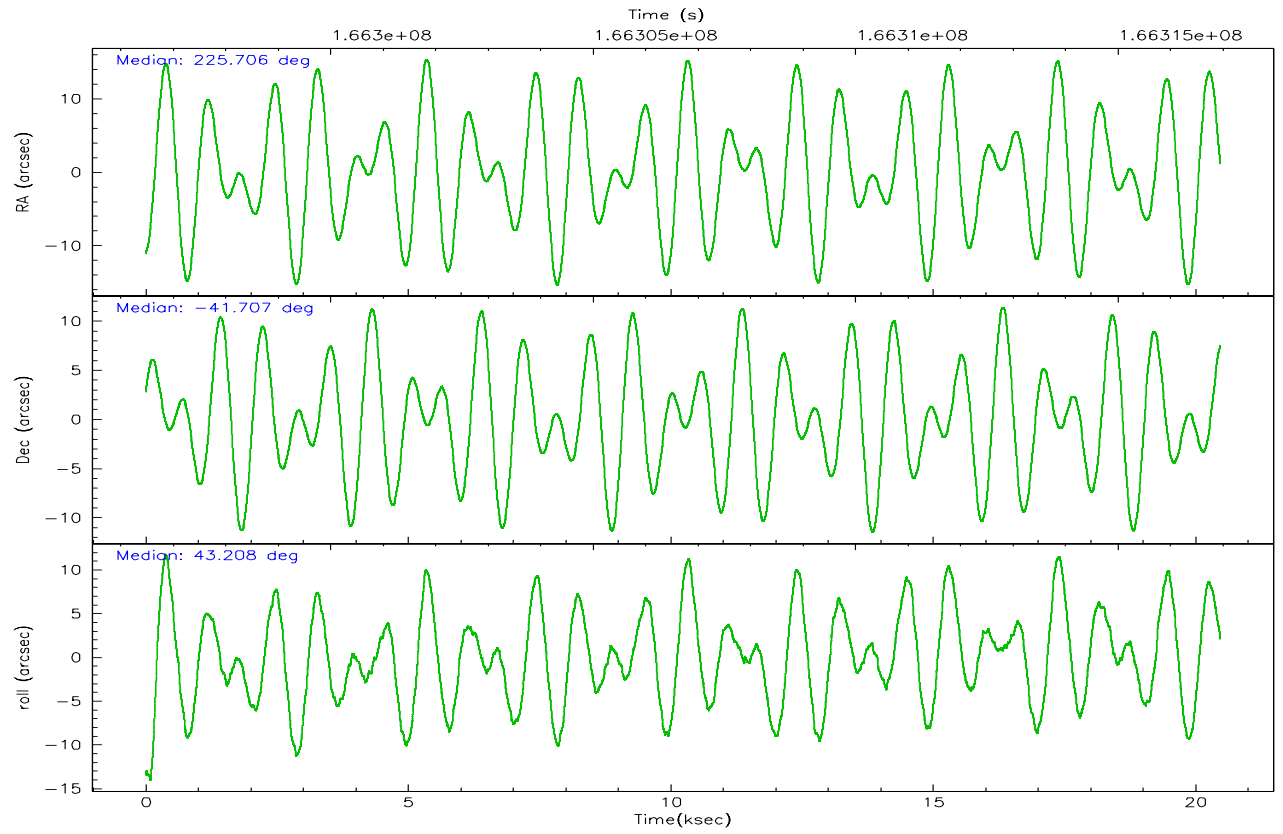
	ccd 0	ccd 1	ccd 2	ccd 3	ccd 7
grade 0 events	49376	13147	5307	11454	3768
	33%	12%	4%	10%	3%
grade 1 events	198	67	59	78	47
	0%	0%	0%	0%	0%
grade 2 events	6857	2633	2270	2554	10651
	4%	2%	2%	2%	10%
grade 3 events	2437	1368	1118	1215	2591
	1%	1%	1%	1%	2%
grade 4 events	2360	1387	1020	1174	2541
	1%	1%	0%	1%	2%
grade 5 events	3099	3191	2838	3375	7532
	2%	3%	2%	3%	7%
grade 6 events	2560	2183	1760	1841	25140
	1%	2%	1%	1%	25%
grade 7 events	82103	81292	95061	89046	46207
	55%	77%	86%	80%	46%

## 2.2 Compared Parameters

Parameter	Planned	Actual	Parameter	Planned	Actual
Instrument	ACIS	ACIS	Obspar format version number	6	6
Detector	ACIS-01237	ACIS-01237	Obspar file type	PREDICTED	ACTUAL
Grating	NONE	NONE	Obspar update status	NONE	UPDATED
Data mode	VFAINT	VFAINT	On-chip summing requested	N	N
Observation mode	POINTING	POINTING	Subarray requested	NONE	NONE
Pointing RA	225.695375	225.7058398245967	Alternating exposures requested	N	N
Pointing Dec	-41.732945	-41.7066839652016	Primary exposure time	0.000000	3.1
Pointing Roll	42.996923	43.21257194974184			
SIM focus pos (mm)	-0.782348	-0.7809083437167272			
SIM defocus (mm)	0	0.001439871863259334			
SIM translation stage pos (mm)	-233.592463	-233.5874344608287			
SIM translation stage offset (mm)	0	-0.005018542100998502			
Observation start time	166296659.184000	166296282.91316			
Observation start date	2003-04-09T17:29:55	2003-04-09T17:24:42			
Observation end time	166316944.184000	166317258.51404			
Observation end date	2003-04-09T23:08:00	2003-04-09T23:14:18			
Read mode	TIMED	TIMED			

## 2.3 Aspect



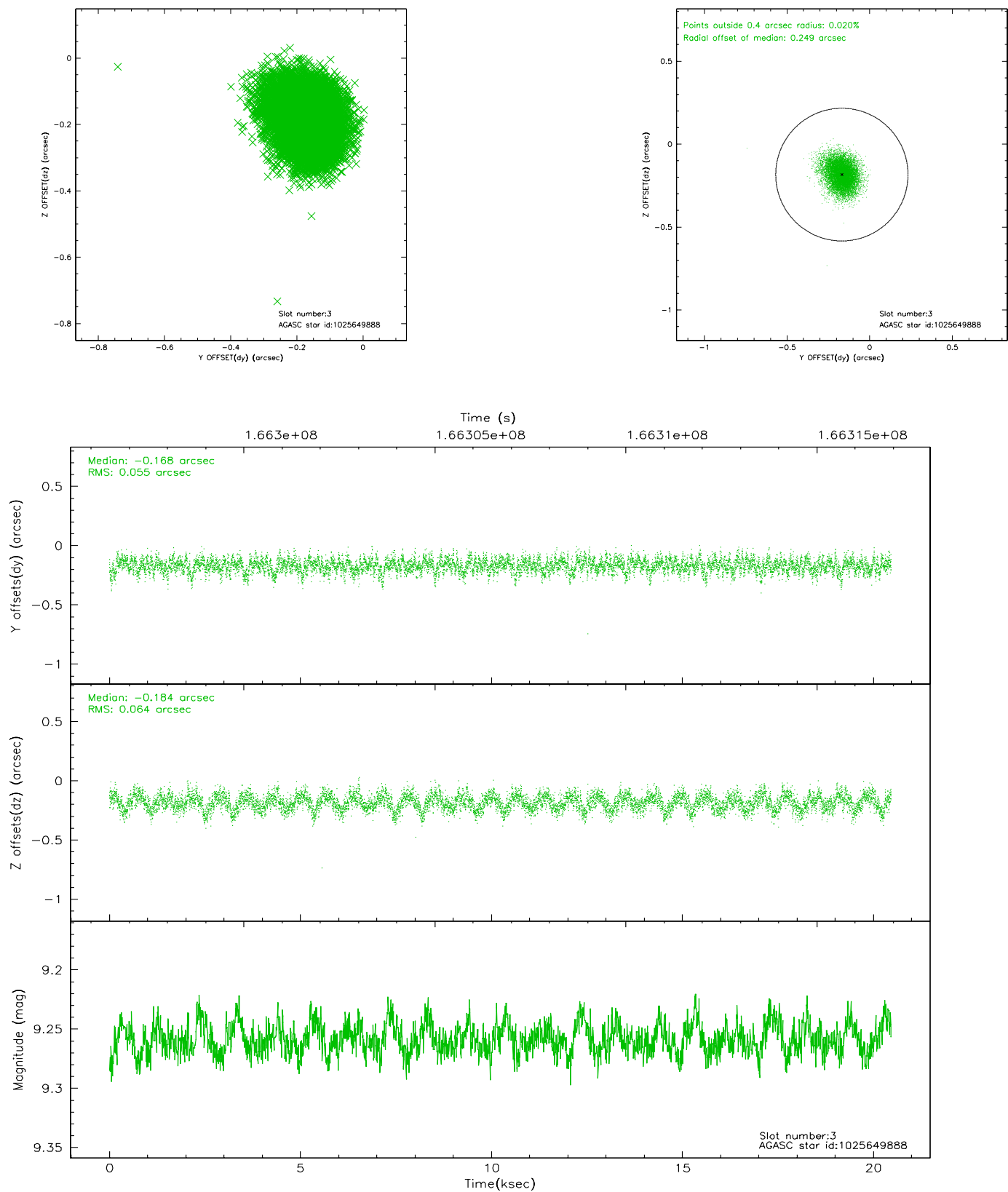


### Slot Statistics

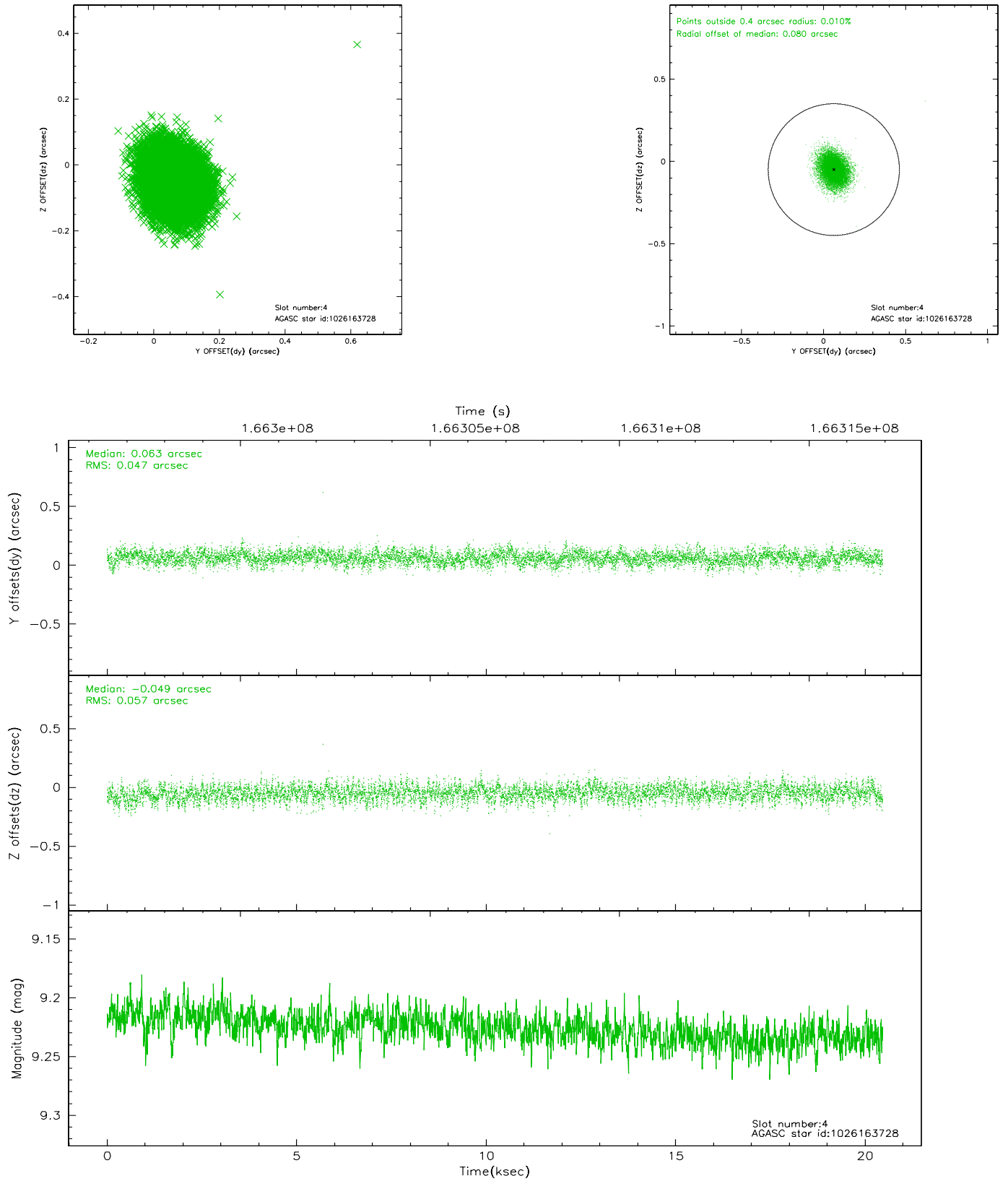
slot	status	id	mag	n_pts	med_dy	med_dz	dr1	dr2	ra	dec	mean_y	mean_z
0	FID	ACIS-I-1	7.25	4992	-0.084	0.017	0.008	0.015	0.000000	0.000000	937.48	-830.22
1	FID	ACIS-I-2	7.16	4991	-0.026	-0.007	0.006	0.010	0.000000	0.000000	-756.44	-836.82
2	FID	ACIS-I-4	7.17	4992	0.012	0.057	0.006	0.010	0.000000	0.000000	2157.33	1069.57
3	GUIDE	1025649888	9.26	9982	-0.168	-0.184	0.090	0.146	225.540879	-41.189826	1026.95	1715.27
4	GUIDE	1026163728	9.23	9977	0.063	-0.049	0.079	0.127	225.377558	-41.568164	-222.39	1016.65
5	GUIDE	1026170368	9.30	9975	0.074	0.052	0.081	0.131	225.763429	-42.291155	-1237.52	-1593.28
6	GUIDE	1026170800	9.02	9981	0.204	0.089	0.066	0.110	225.400024	-42.381702	-2167.76	-1173.74
7	GUIDE	1026183784	9.17	9976	-0.172	0.097	0.080	0.130	226.363370	-41.841537	1038.96	-1512.60

## 2.4 Star Slots

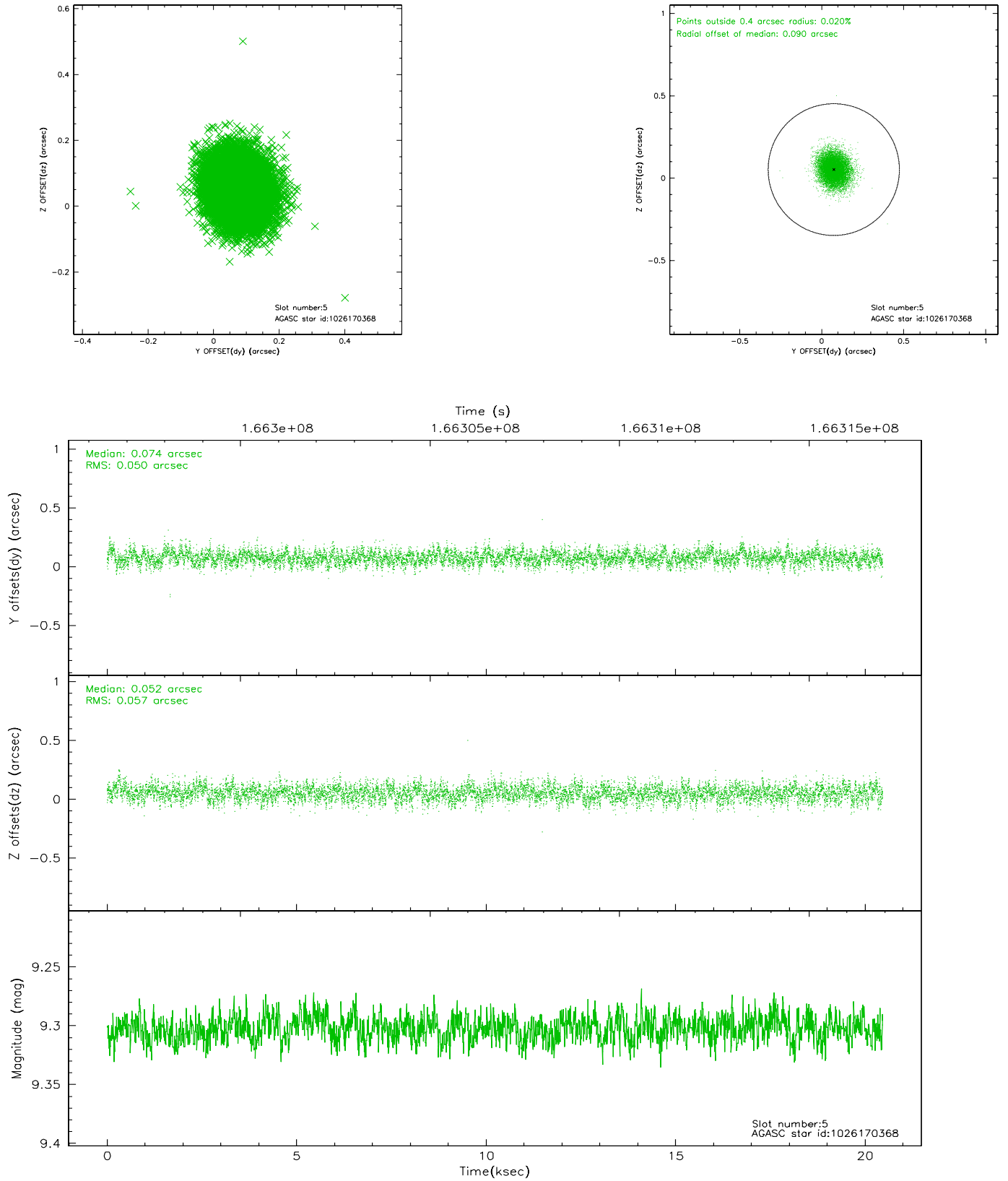
### 2.4.1 Slot 3



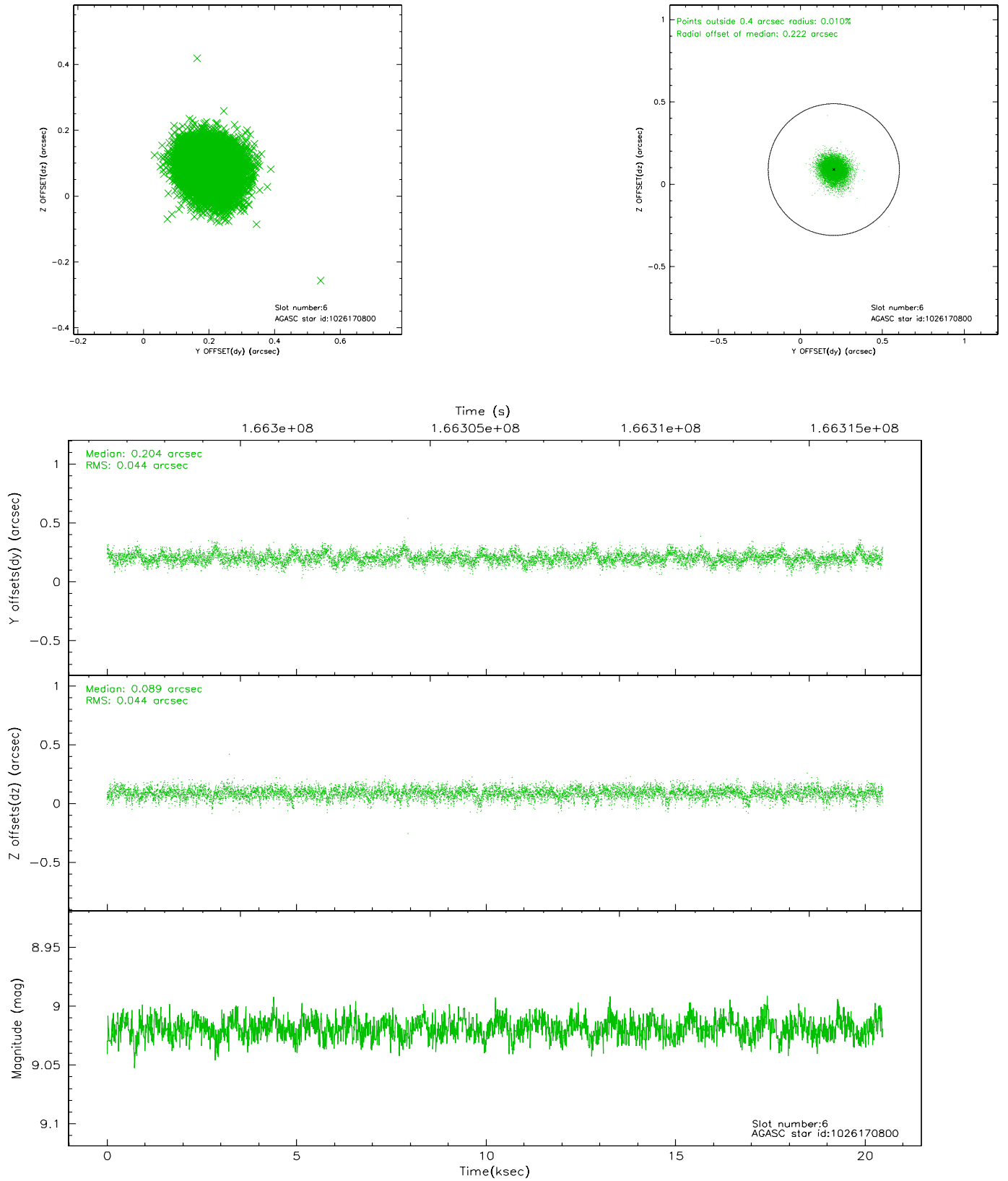
## 2.4.2 Slot 4



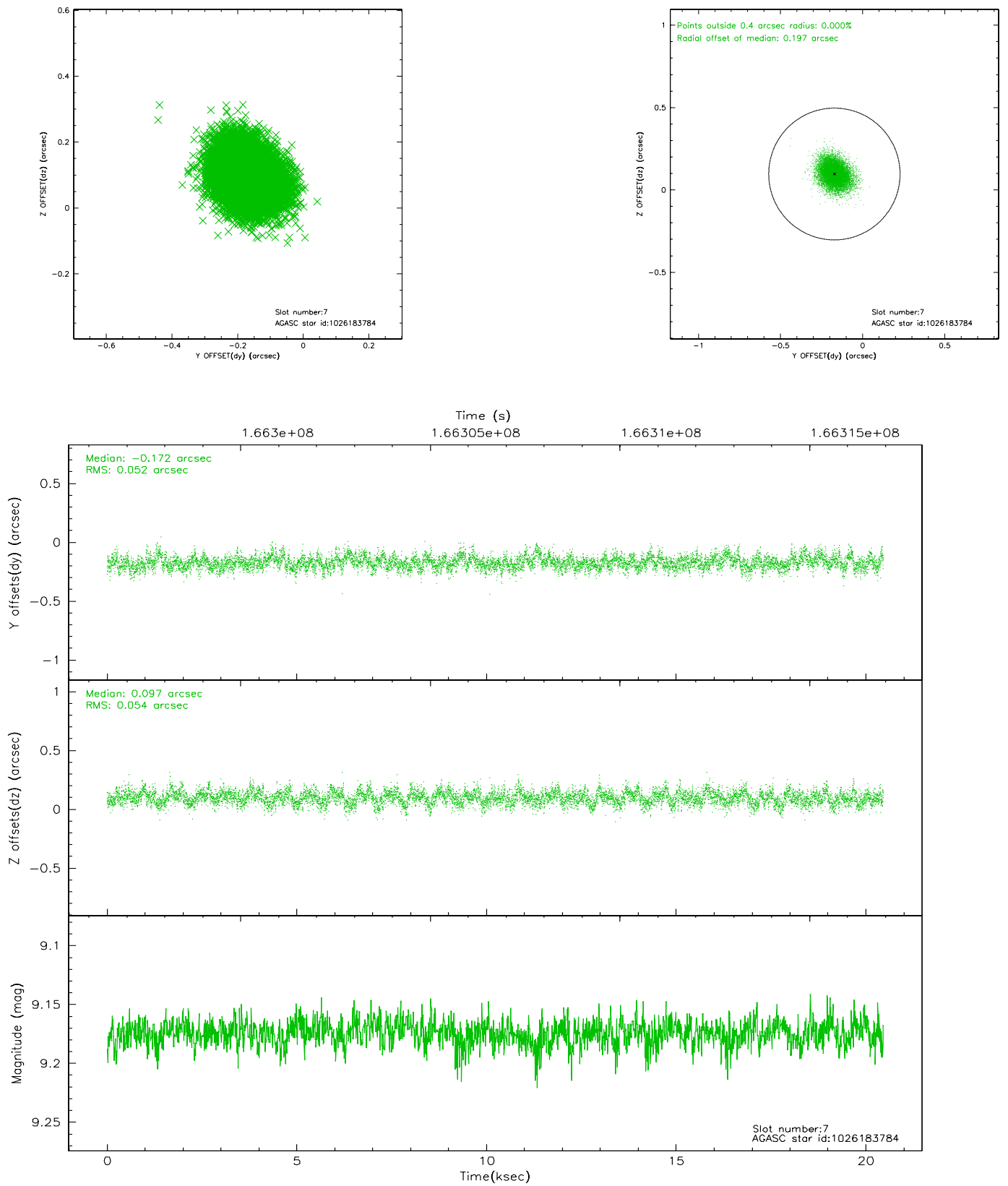
### 2.4.3 Slot 5



## 2.4.4 Slot 6

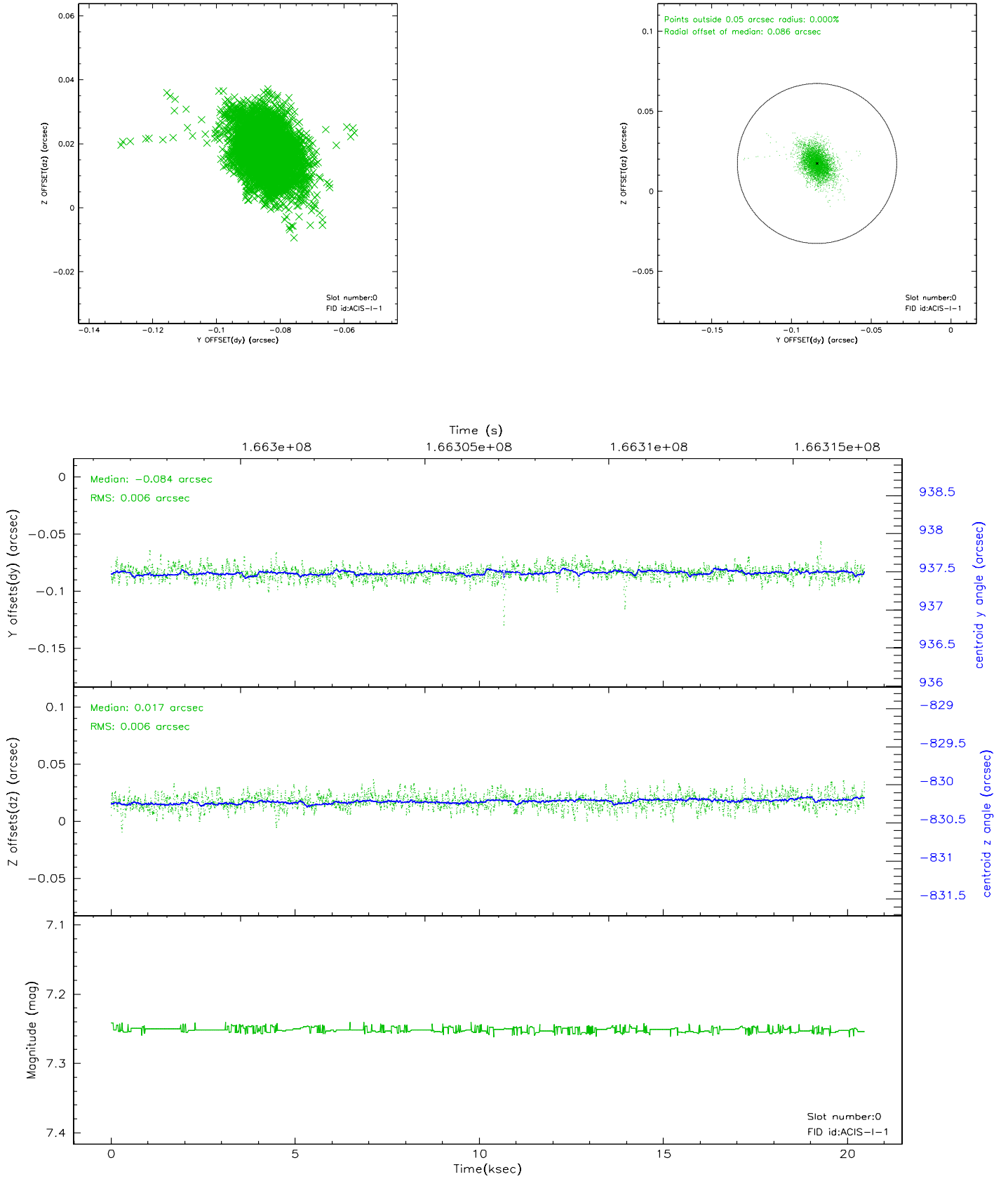


## 2.4.5 Slot 7

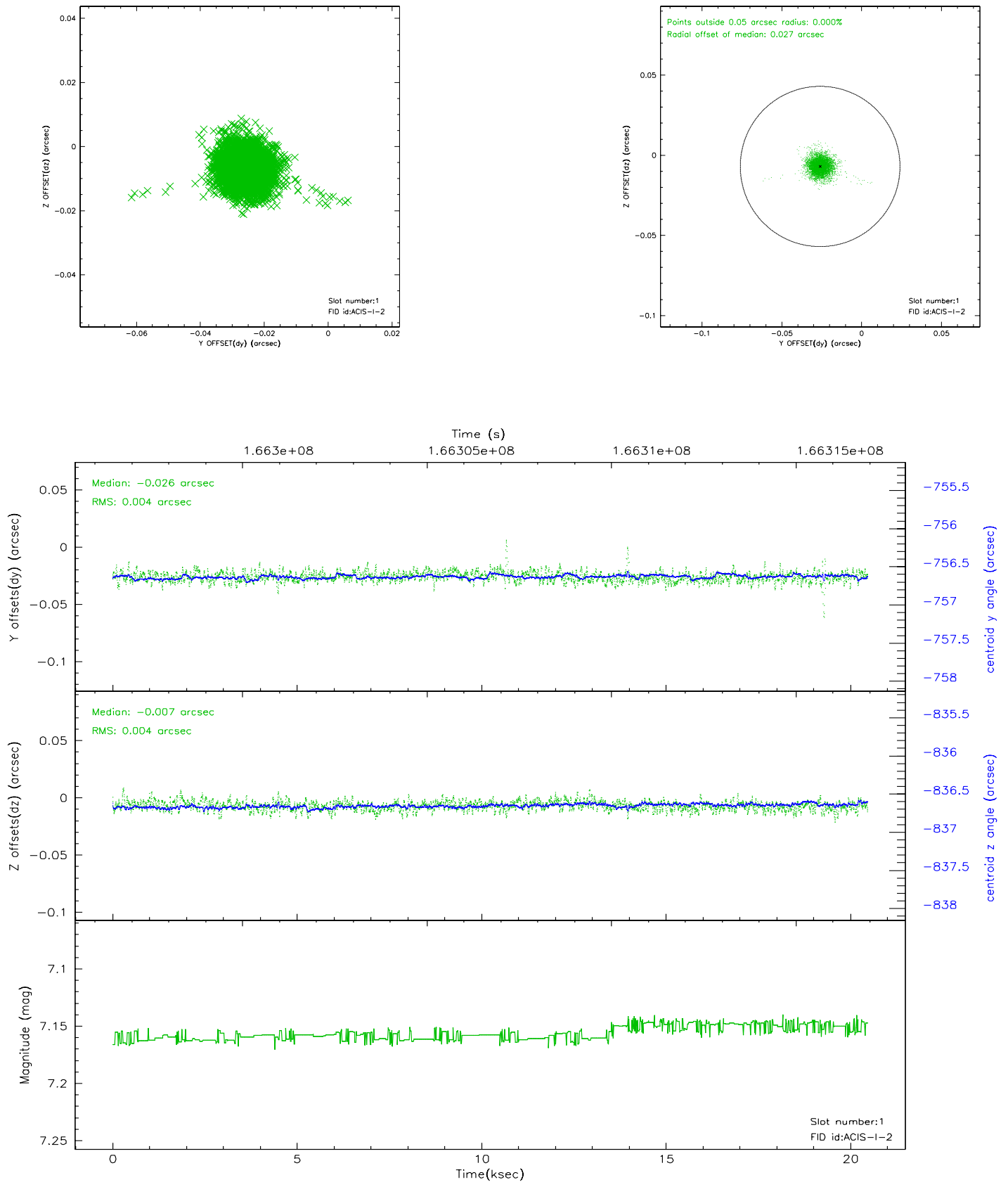


## 2.5 FID Slots

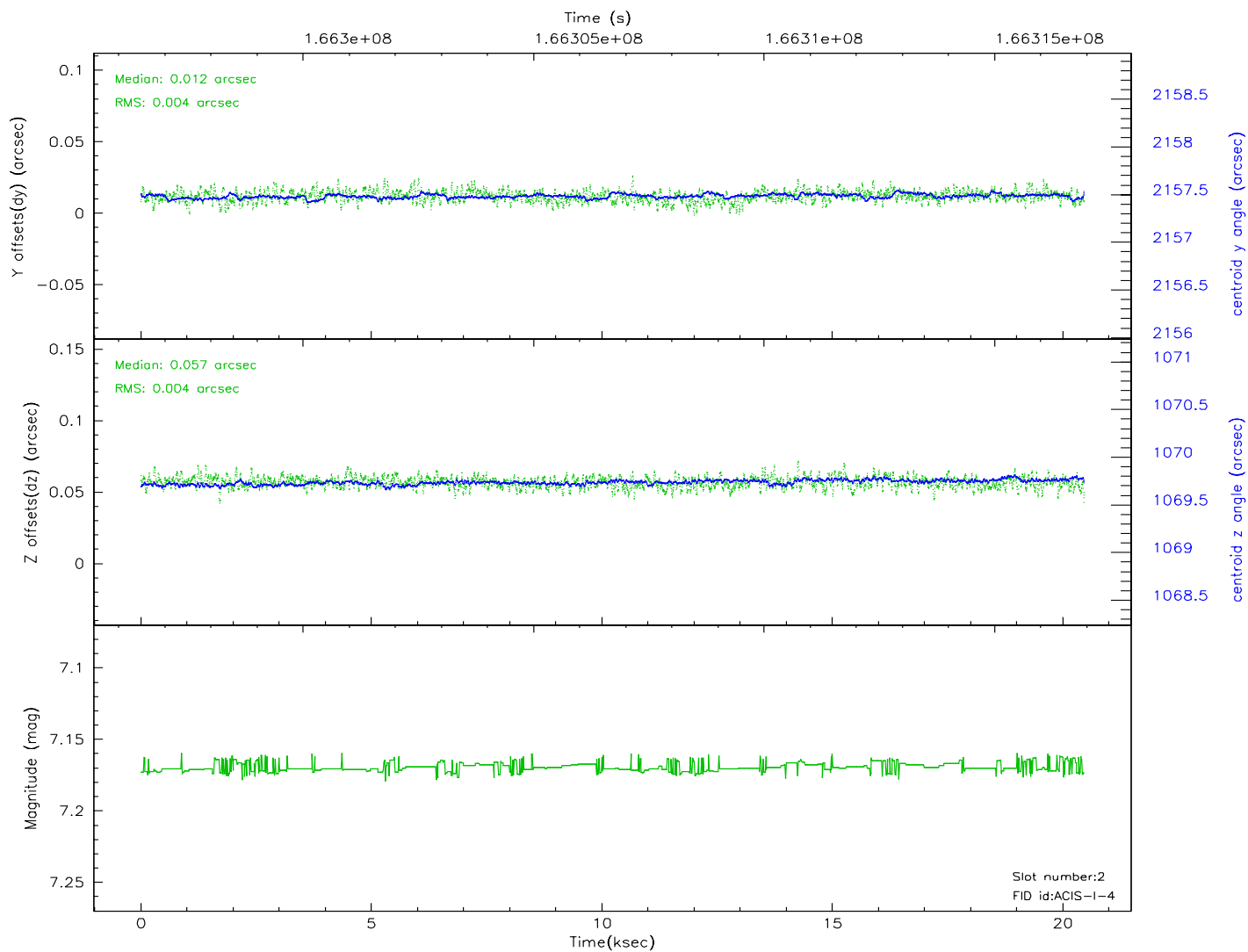
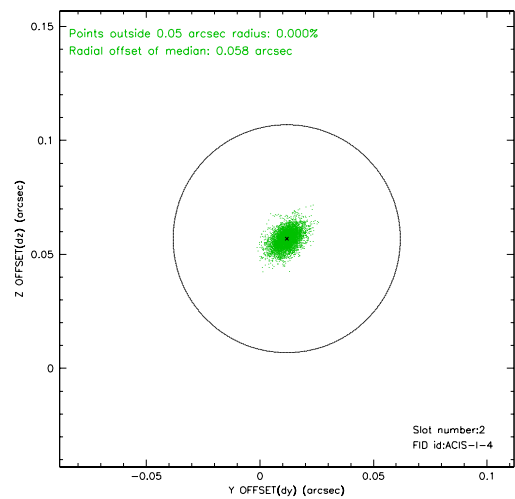
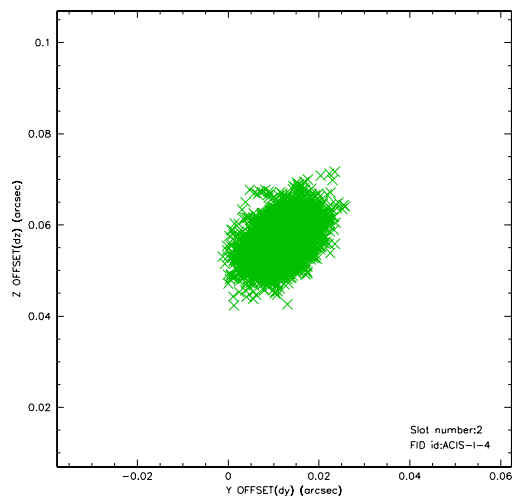
### 2.5.1 Slot 0



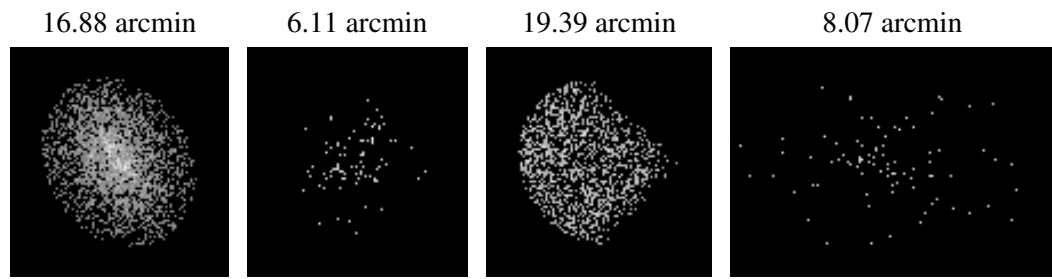
## 2.5.2 Slot 1



### 2.5.3 Slot 2



### 3 Point Sources



## A Summary

### A.1 Status

V&V Scientist	Beth Sundheim
V&V Date (YYYY-MM-DD)	2006.08.04
V&V Edition	1
V&V Disposition and Status	OK
V&V Charge Time	20.06

### A.2 Comments