

# V&V Reference Report

## L2 ASCDS Version : 7.6.9

Observation 4360 - L2 Version 001  
Chandra X-Ray Center

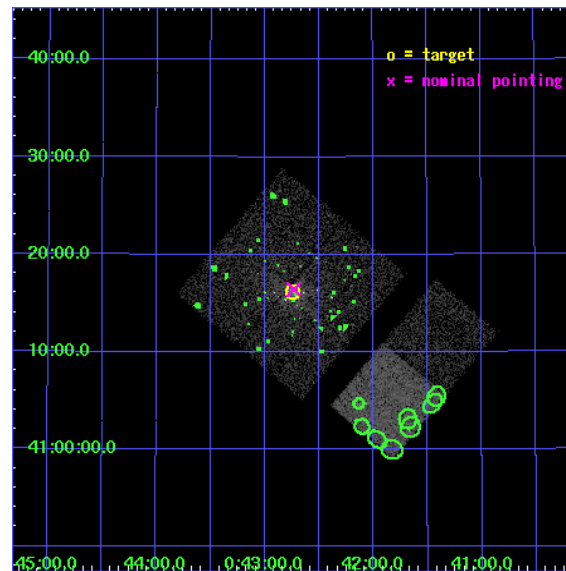
L2 Processing Date : Sep 30 2006

## Contents

<b>1</b>	<b>Front</b>	<b>2</b>
<b>2</b>	<b>OBI</b>	<b>3</b>
2.1	OBI . . . . .	3
2.1.1	Images . . . . .	3
2.1.2	Bias . . . . .	3
2.1.3	Parameters . . . . .	4
2.1.4	Events . . . . .	4
2.2	Compared Parameters . . . . .	5
2.3	Aspect . . . . .	6
2.4	Star Slots . . . . .	9
2.4.1	Slot 3 . . . . .	9
2.4.2	Slot 4 . . . . .	10
2.4.3	Slot 5 . . . . .	11
2.4.4	Slot 6 . . . . .	12
2.4.5	Slot 7 . . . . .	13
2.5	FID Slots . . . . .	14
2.5.1	Slot 0 . . . . .	14
2.5.2	Slot 1 . . . . .	15
2.5.3	Slot 2 . . . . .	16
<b>3</b>	<b>Point Sources</b>	<b>17</b>
<b>A</b>	<b>Summary</b>	<b>18</b>
A.1	Status . . . . .	18
A.2	Comments . . . . .	18

# 1 Front

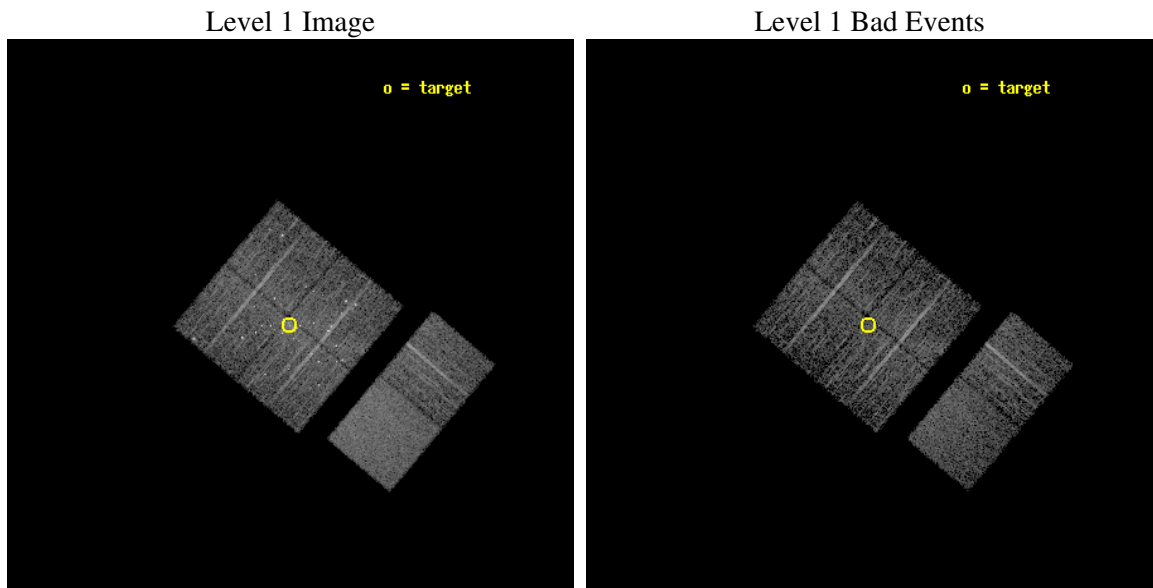
seq_num	600330
obs_id	4360
title	SEARCHING FOR THE X-RAY SIGNATURE TO CURRENT RADIO ACTIVITY IN M31*
observer	Dr. Francis Primini
object	M31
dtcycle	0
cycle	P
ra_targ	10.685
dec_targ	41.269139
ra_nom	10.683154383234
dec_nom	41.27364279234
roll_nom	130.00244087389
revision	2
ontime	4966.3999814987
livetime	4903.5124345259
ontime0	4966.3999814987
ontime1	4966.3999814987
ontime2	4966.3999814987
ontime3	4966.3999814987
ontime6	4965.5680249035
ontime7	4965.6090649068
l2events	44057



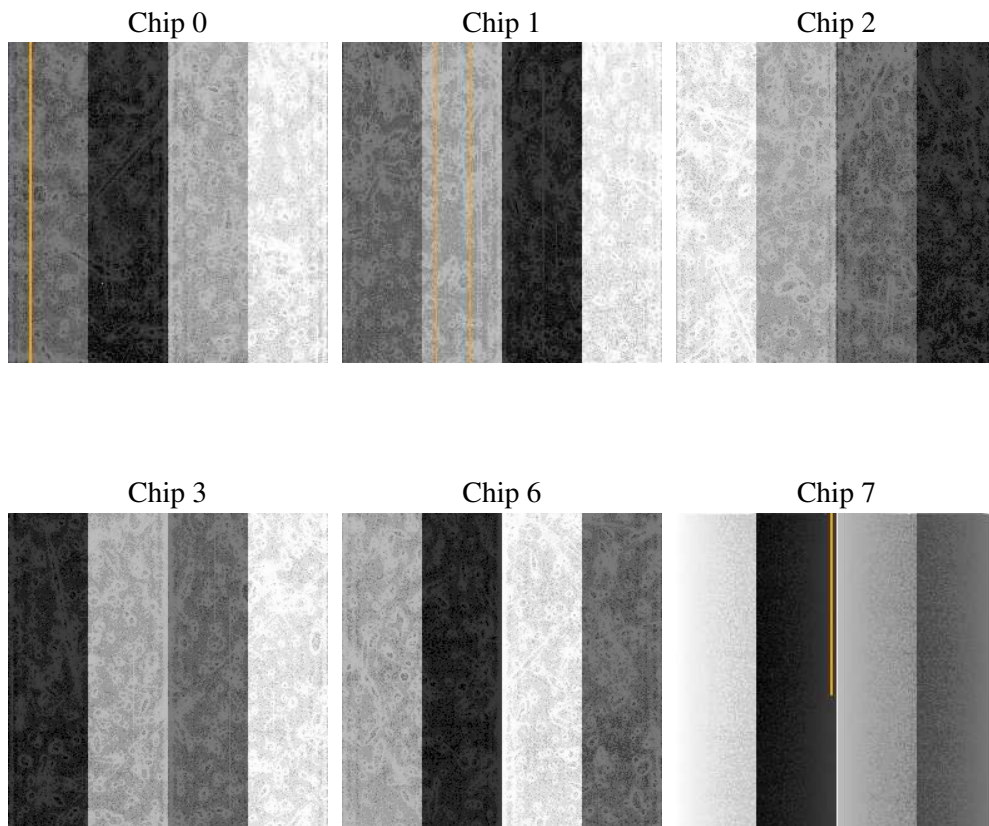
## 2 OBI

### 2.1 OBI

#### 2.1.1 Images



#### 2.1.2 Bias



### 2.1.3 Parameters

obi_num	0
ascdsver	7.6.9
caldsver	3.2.3
date	2006-09-30T11:17:34
revision	2

sched_exp_time	5000.000000
ontime	4971.694144994
ontime0	4971.6941749156
ontime1	4971.694144994
ontime2	4971.6941749156
ontime3	4971.694144994
ontime6	4968.4531548321
ontime7	4968.4531548321
l1events	200188

### 2.1.4 Events

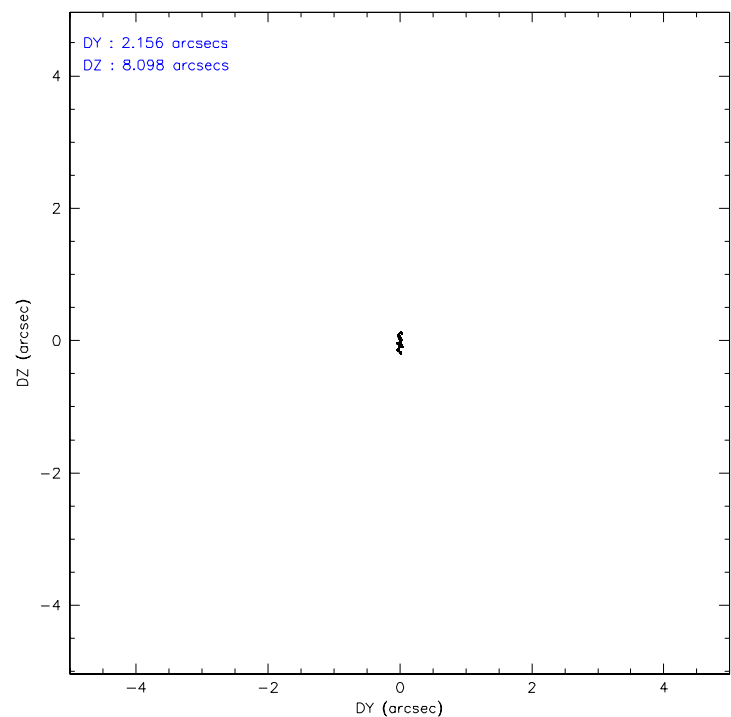
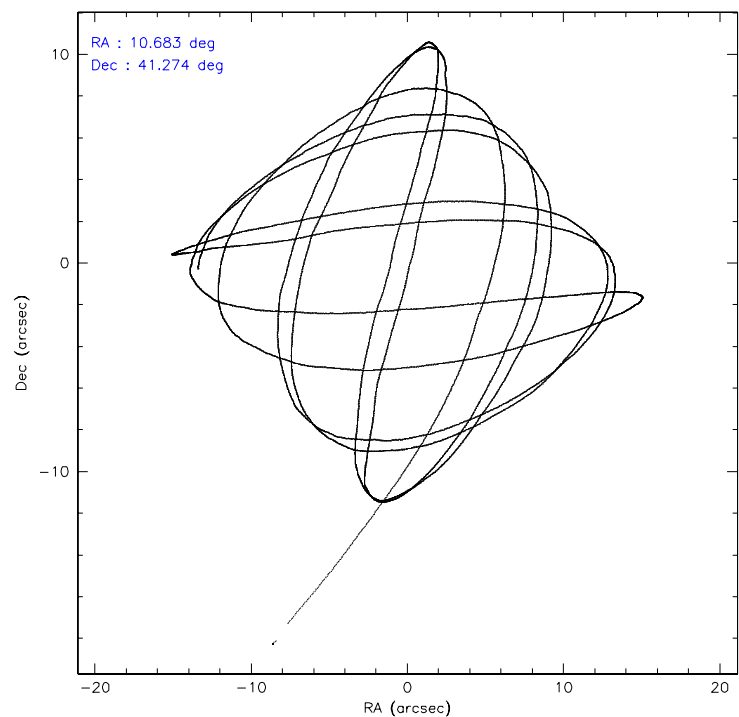
	ccd 0	ccd 1	ccd 2	ccd 3	ccd 6	ccd 7
level 1 events	29551	31328	34347	33952	30633	40377
rejected events	24176	24225	26092	25970	26897	24975
rejected %	81%	77%	75%	76%	87%	61%

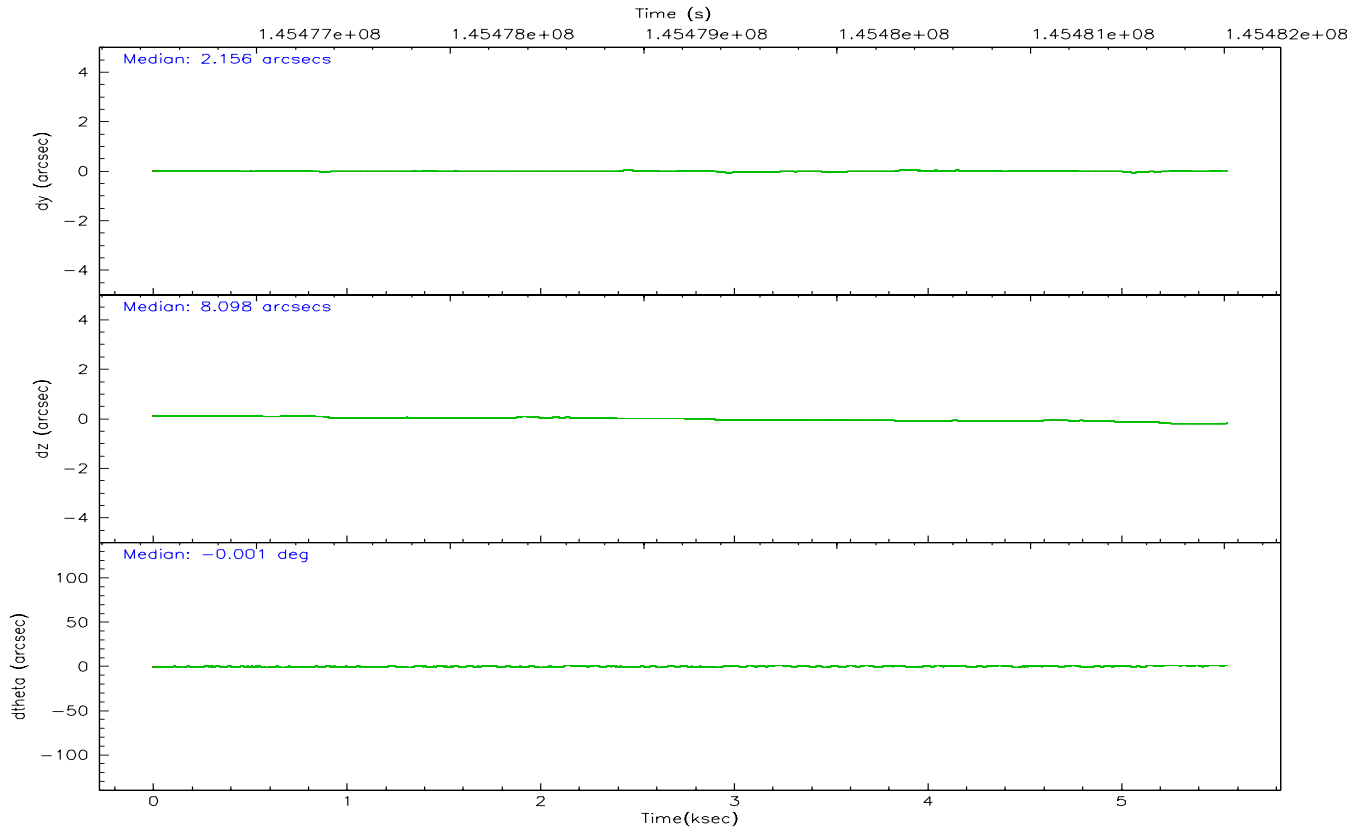
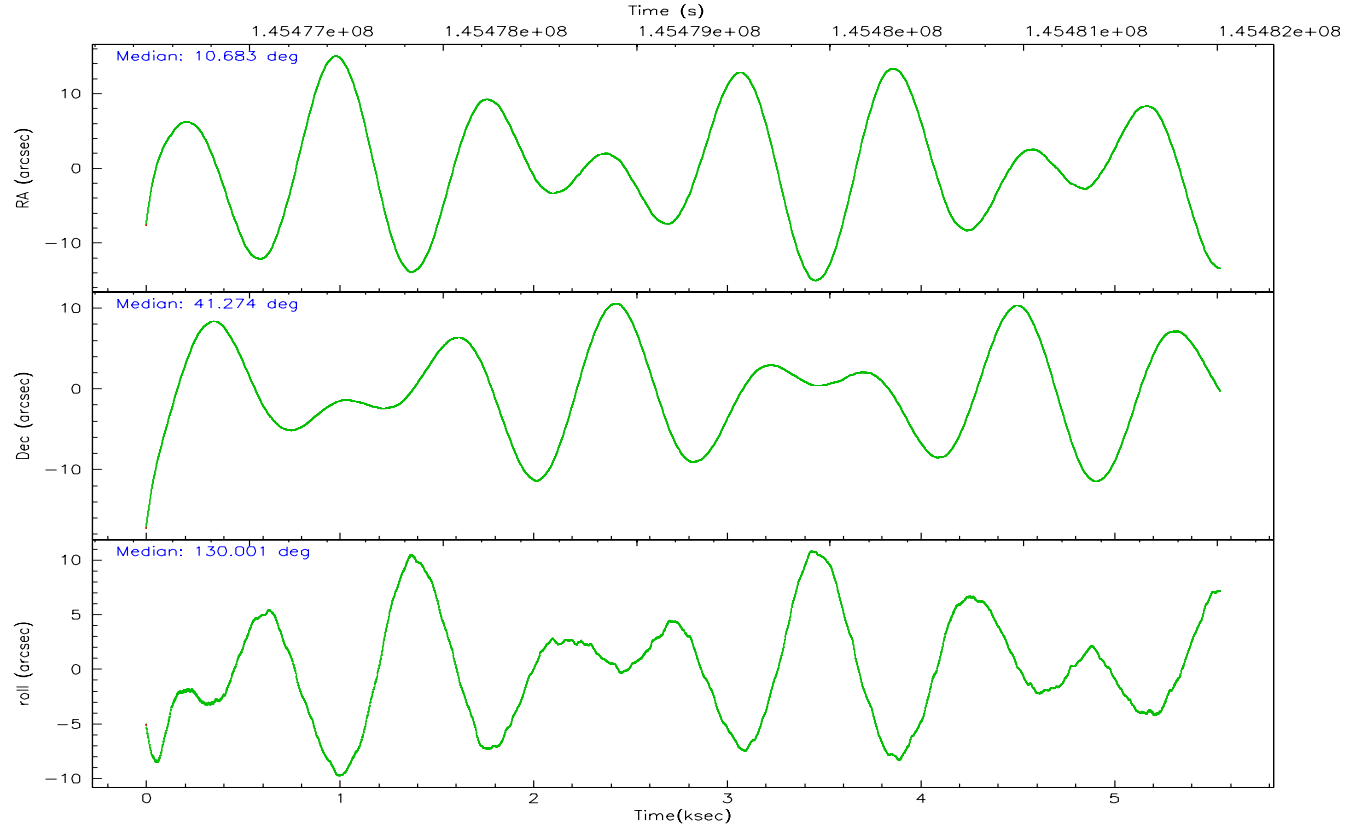
	ccd 0	ccd 1	ccd 2	ccd 3	ccd 6	ccd 7
grade 0 events	3020	4229	5407	5279	1583	993
	10%	13%	15%	15%	5%	2%
grade 1 events	37	30	120	64	14	21
	0%	0%	0%	0%	0%	0%
grade 2 events	908	1090	1205	1076	719	3841
	3%	3%	3%	3%	2%	9%
grade 3 events	400	459	500	488	352	793
	1%	1%	1%	1%	1%	1%
grade 4 events	411	517	513	445	351	834
	1%	1%	1%	1%	1%	2%
grade 5 events	1172	1299	1266	1329	1334	2641
	3%	4%	3%	3%	4%	6%
grade 6 events	642	817	645	706	732	8950
	2%	2%	1%	2%	2%	22%
grade 7 events	22961	22887	24691	24565	25548	22304
	77%	73%	71%	72%	83%	55%

## 2.2 Compared Parameters

Parameter	Planned	Actual	Parameter	Planned	Actual
Instrument	ACIS	ACIS	Obspar format version number	6	6
Detector	ACIS-012367	ACIS-012367	Obspar file type	PREDICTED	ACTUAL
Grating	NONE	NONE	Obspar update status	NONE	UPDATED
Data mode	FAINT	FAINT	Number of optional ACIS chips dropped	0	0
Observation mode	POINTING	POINTING	On-chip summing requested	N	N
Pointing RA	10.717475	10.68315438323351	Subarray requested	NONE	NONE
Pointing Dec	41.264303	41.27364279233996	Alternating exposures requested	N	N
Pointing Roll	129.771121	130.002440873888	Primary exposure time	0.000000	3.2
SIM focus pos (mm)	-0.782348	-0.7809083437167272			
SIM defocus (mm)	0	0.001439871863259334			
SIM translation stage pos (mm)	-233.592463	-233.5874344608287			
SIM translation stage offset (mm)	0	-0.005018542100998502			
Observation start time	145477011.184000	145475858.84471			
Observation start date	2002-08-11T18:15:47	2002-08-11T17:57:38			
Observation end time	145482011.184000	145482690.98249			
Observation end date	2002-08-11T19:39:07	2002-08-11T19:51:30			
Read mode	TIMED	TIMED			

### 2.3 Aspect





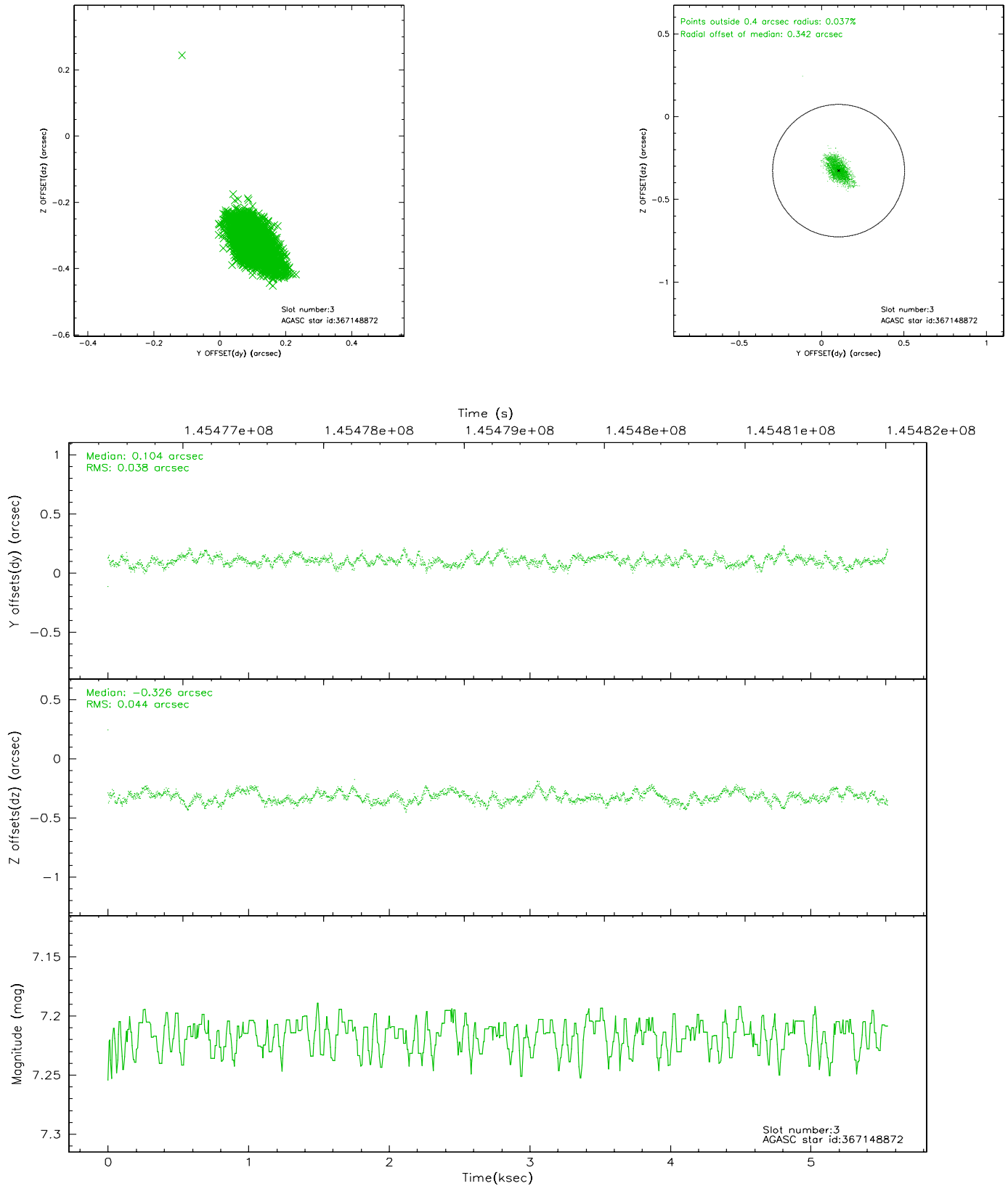
### Slot Statistics

slot	status	id	mag	n_pts	med_dy	med_dz	dr1	dr2	ra	dec	mean_y	mean_z
0	FID	ACIS-I-1	7.24	1354	-0.051	0.094	0.009	0.016	0.000000	0.000000	937.60	-831.43
1	FID	ACIS-I-5	7.24	1352	-0.007	0.025	0.007	0.012	0.000000	0.000000	-1809.84	1065.49
2	FID	ACIS-I-6	7.26	1354	-0.034	-0.049	0.007	0.011	0.000000	0.000000	402.02	1711.12
3	GUIDE	367148872	7.22	2705	0.104	-0.326	0.060	0.103	10.505940	40.688258	-1224.85	1770.40
4	GUIDE	367139768	7.98	2704	0.221	-0.141	0.063	0.102	11.069715	40.685175	-2217.21	594.49
5	GUIDE	367657272	8.41	2707	-0.021	0.265	0.118	0.176	11.834471	41.298907	-1823.56	-2413.08
6	GUIDE	367671800	9.40	2706	-0.225	0.110	0.102	0.162	10.554735	41.964935	2215.97	-1279.18
7	GUIDE	367665472	9.49	2707	-0.087	0.088	0.113	0.180	10.241611	41.730843	2111.39	-93.80

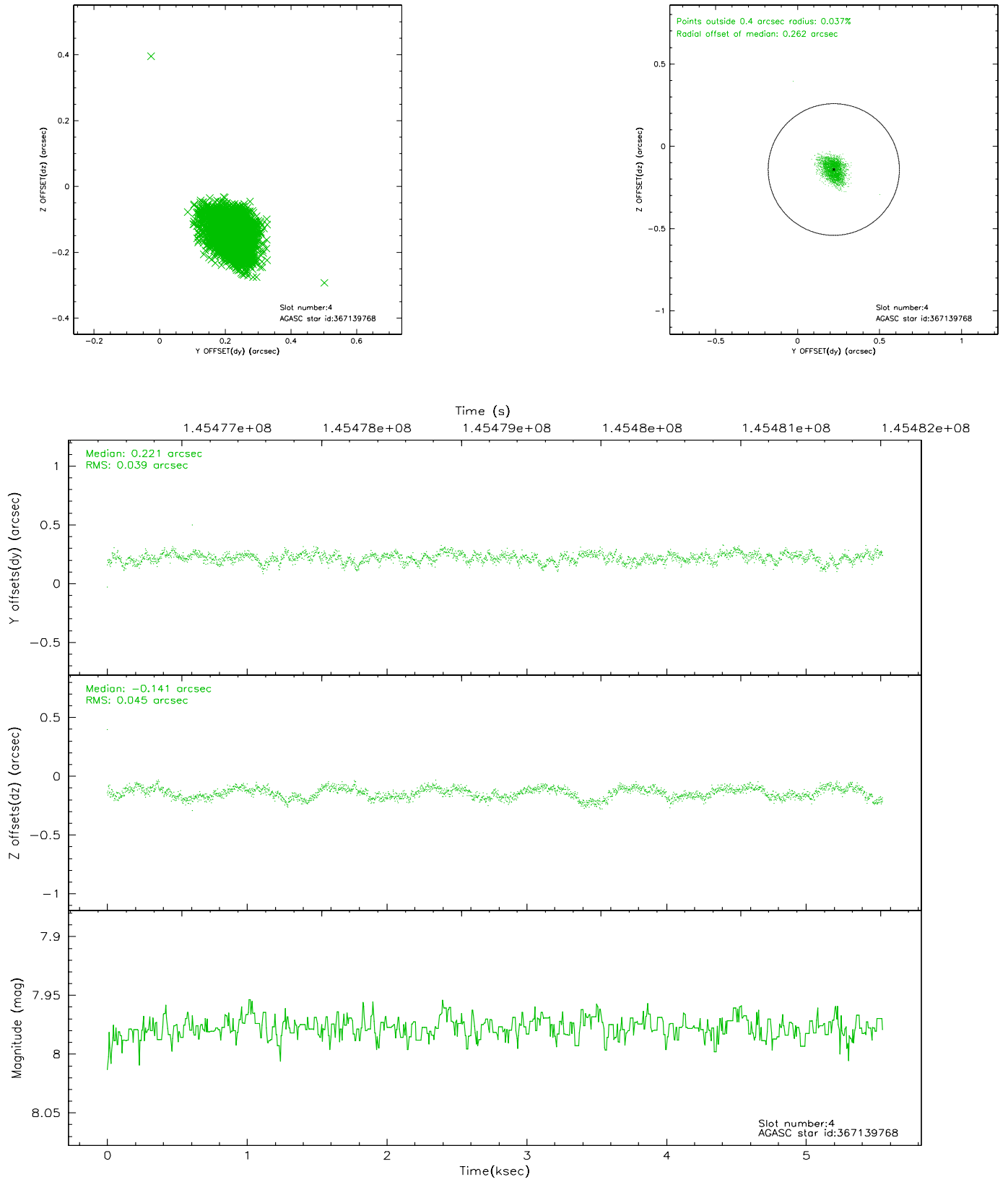


## 2.4 Star Slots

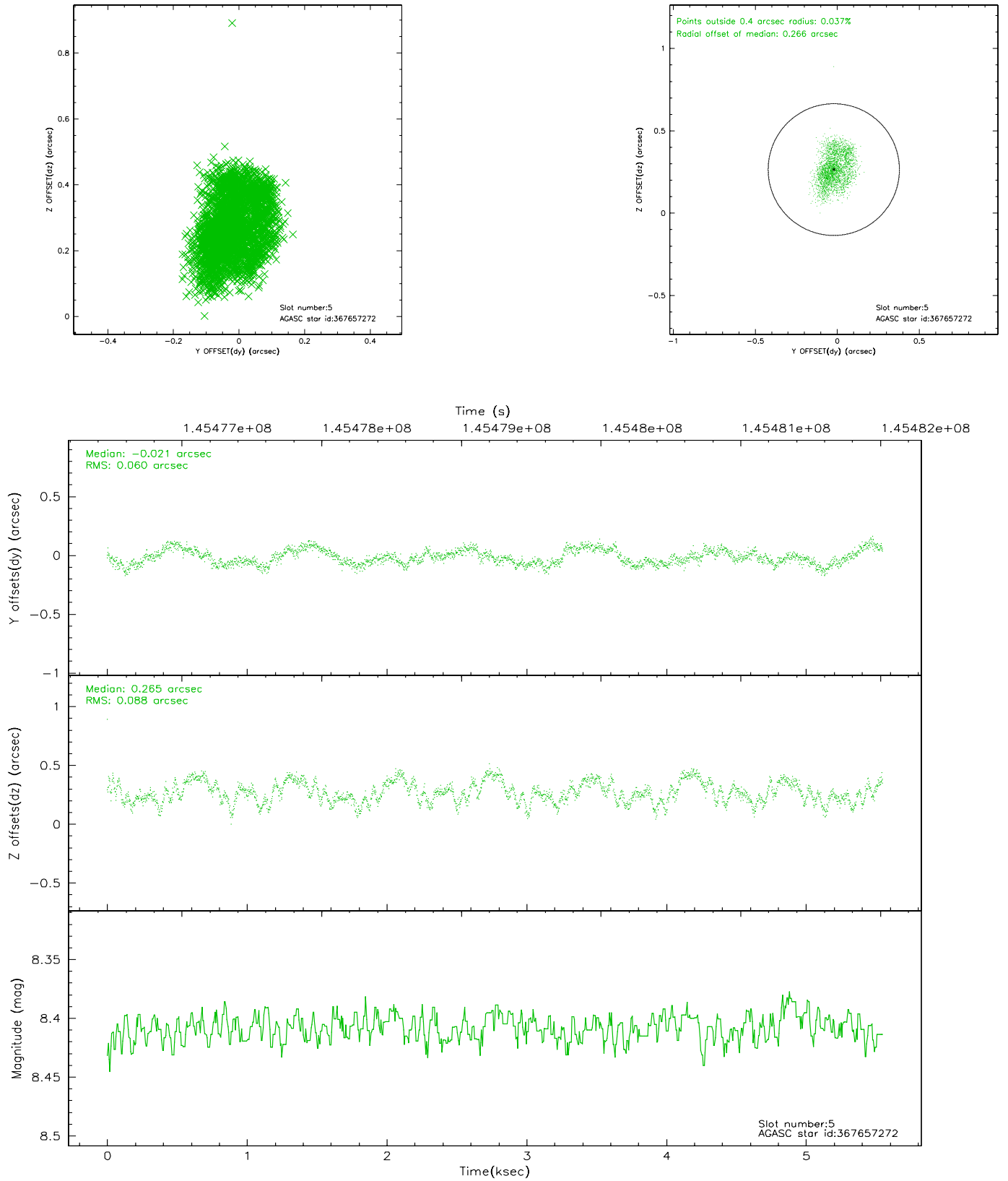
### 2.4.1 Slot 3



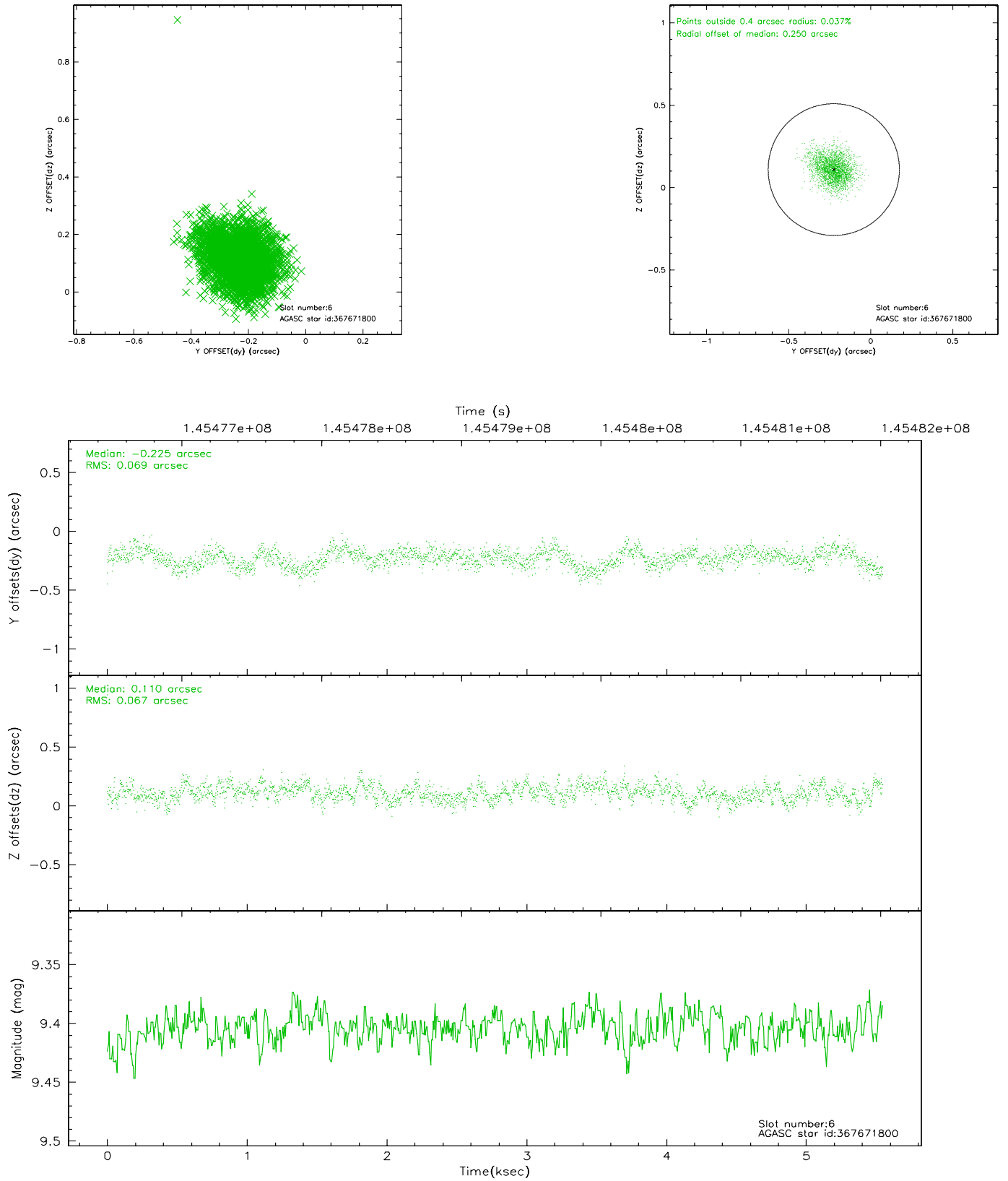
## 2.4.2 Slot 4



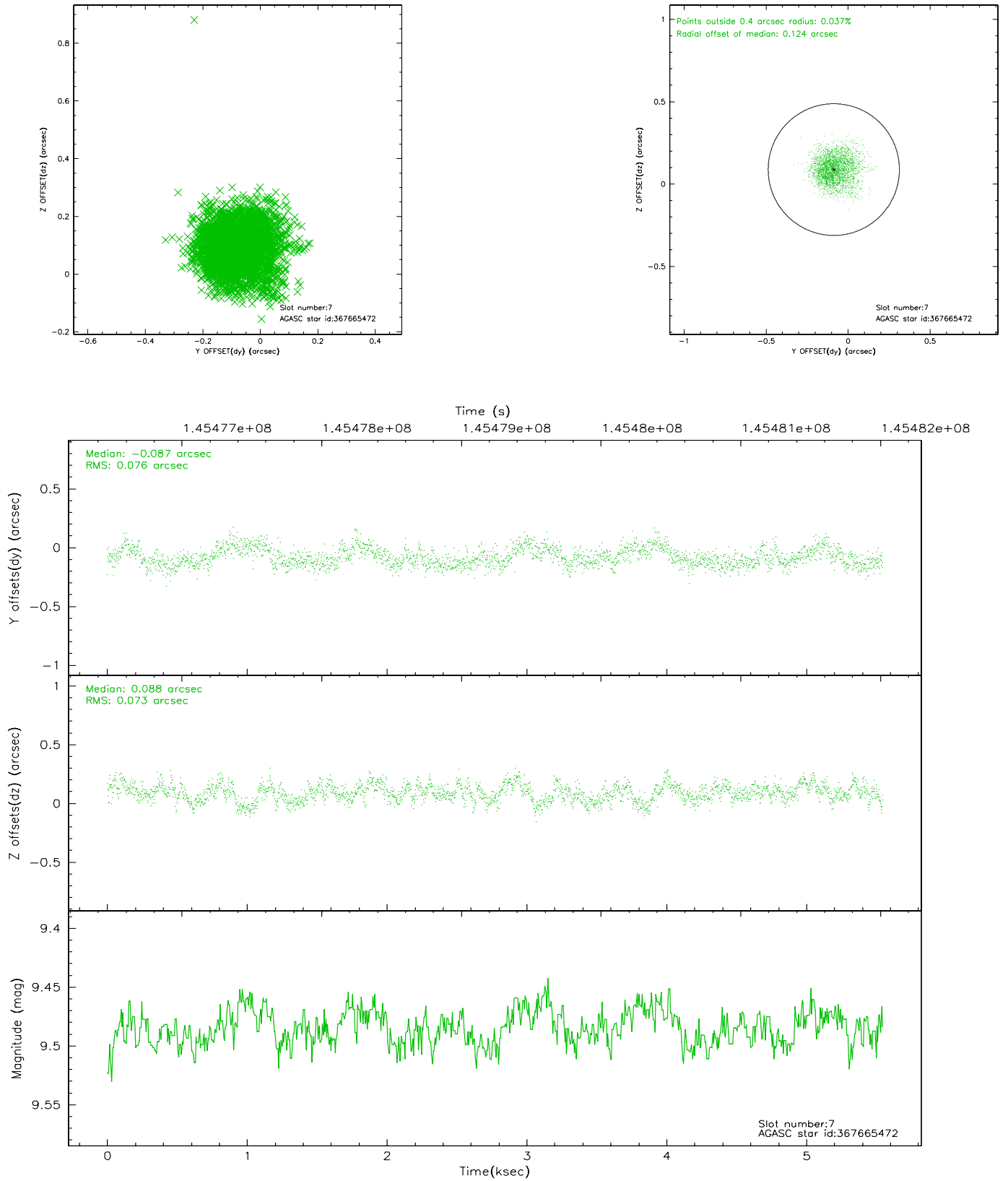
### 2.4.3 Slot 5



## 2.4.4 Slot 6

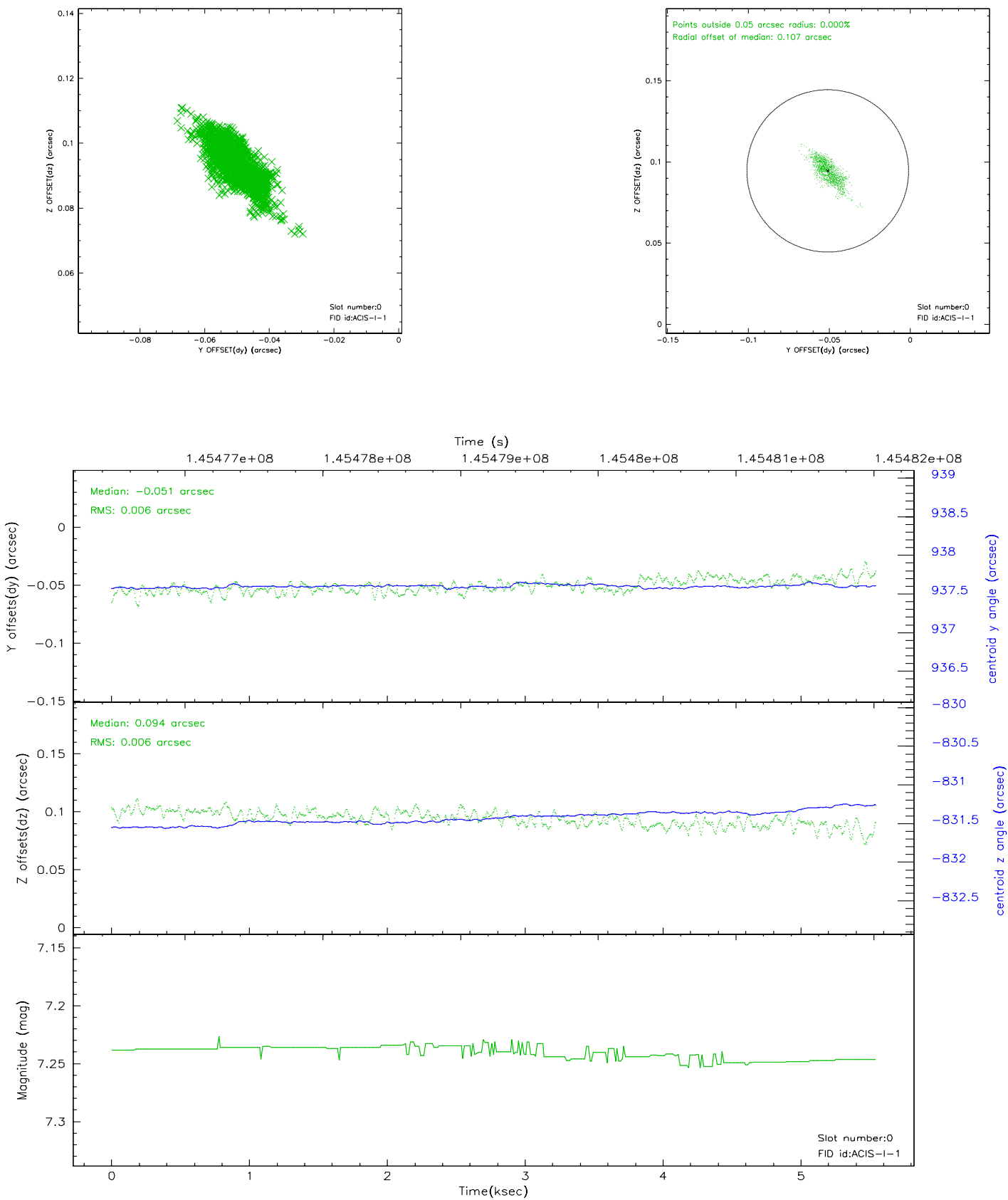


## 2.4.5 Slot 7

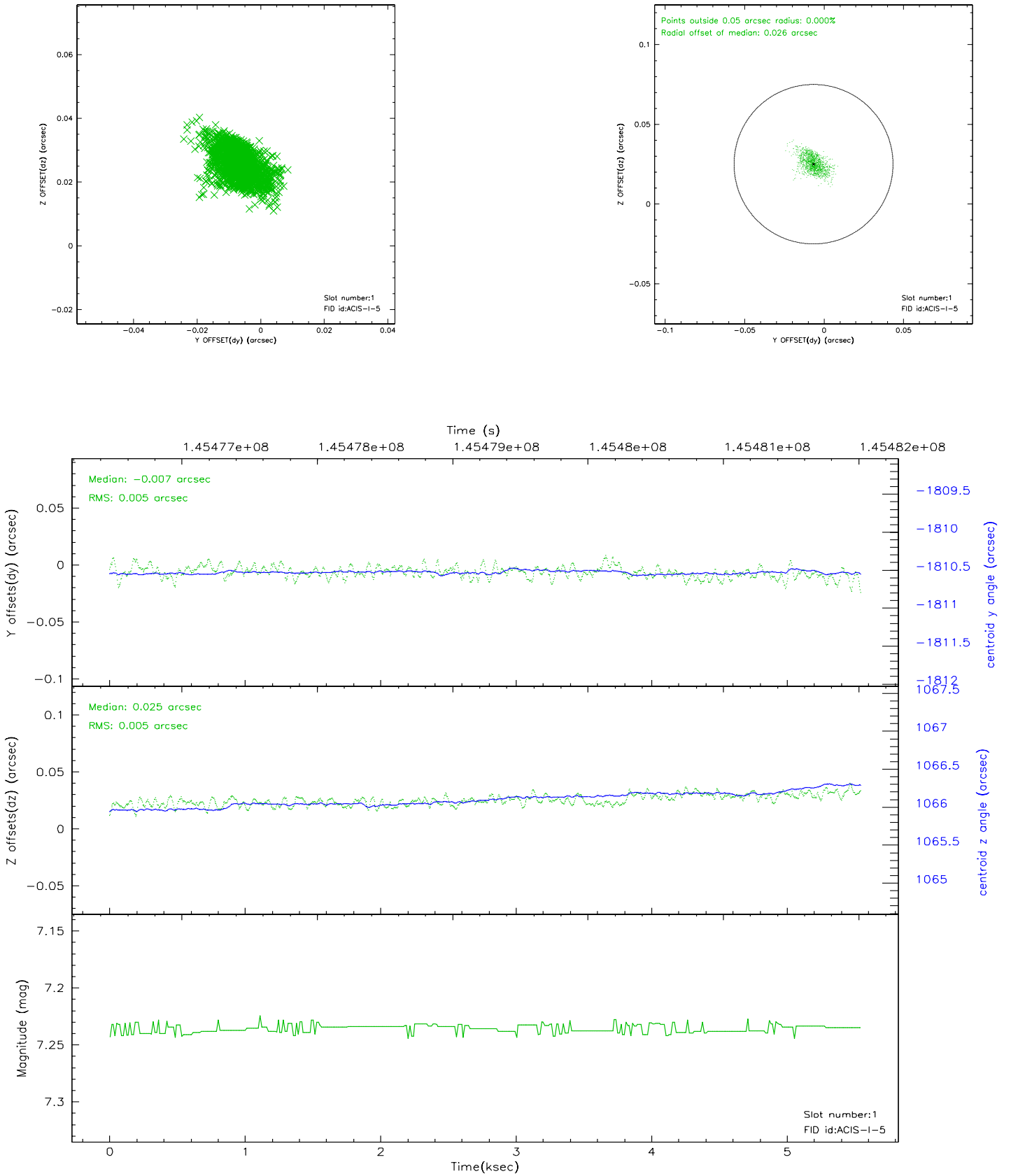


## 2.5 FID Slots

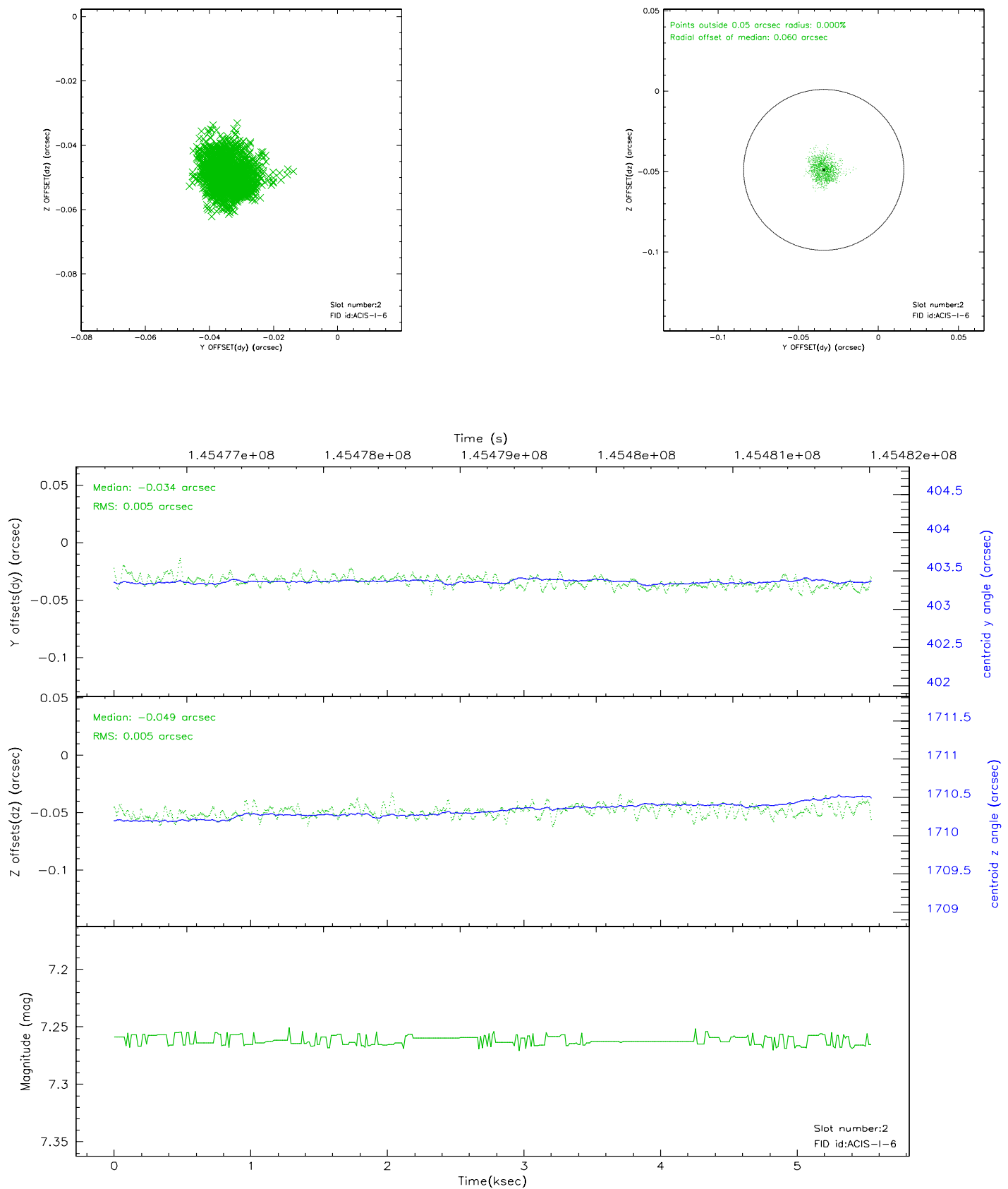
### 2.5.1 Slot 0



## 2.5.2 Slot 1

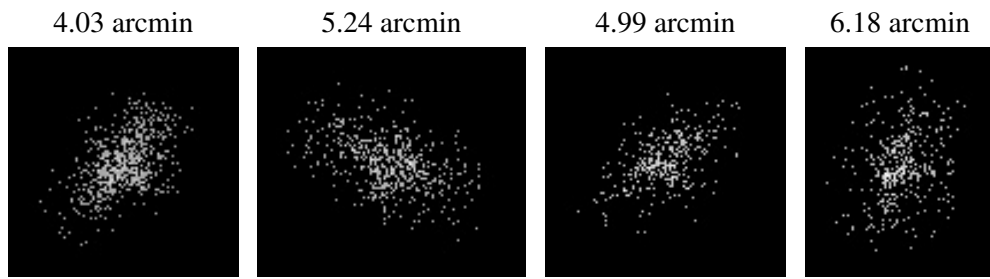


### 2.5.3 Slot 2





### 3 Point Sources



## A Summary

### A.1 Status

V&V Scientist	Jen Lauer
V&V Date (YYYY-MM-DD)	2006.10.02
V&V Edition	1
V&V Disposition and Status	OK
V&V Charge Time	4.969

### A.2 Comments