

# V&V Reference Report

## L2 ASCDS Version : 7.6.8

Observation 4140 - L2 Version 001  
Chandra X-Ray Center

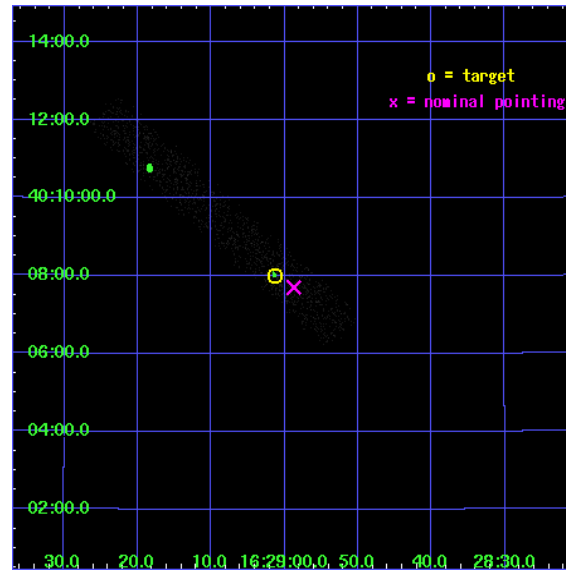
L2 Processing Date : Jul 14 2006

## Contents

<b>1</b>	<b>Front</b>	<b>2</b>
<b>2</b>	<b>OBI</b>	<b>3</b>
2.1	OBI . . . . .	3
2.1.1	Images . . . . .	3
2.1.2	Bias . . . . .	3
2.1.3	Parameters . . . . .	4
2.1.4	Events . . . . .	4
2.2	Compared Parameters . . . . .	5
2.3	Aspect . . . . .	6
2.4	Star Slots . . . . .	9
2.4.1	Slot 3 . . . . .	9
2.4.2	Slot 4 . . . . .	10
2.4.3	Slot 5 . . . . .	11
2.4.4	Slot 6 . . . . .	12
2.4.5	Slot 7 . . . . .	13
2.5	FID Slots . . . . .	14
2.5.1	Slot 0 . . . . .	14
2.5.2	Slot 1 . . . . .	15
2.5.3	Slot 2 . . . . .	16
<b>3</b>	<b>Point Sources</b>	<b>17</b>
<b>A</b>	<b>Summary</b>	<b>18</b>
A.1	Status . . . . .	18
A.2	Comments . . . . .	18

# 1 Front

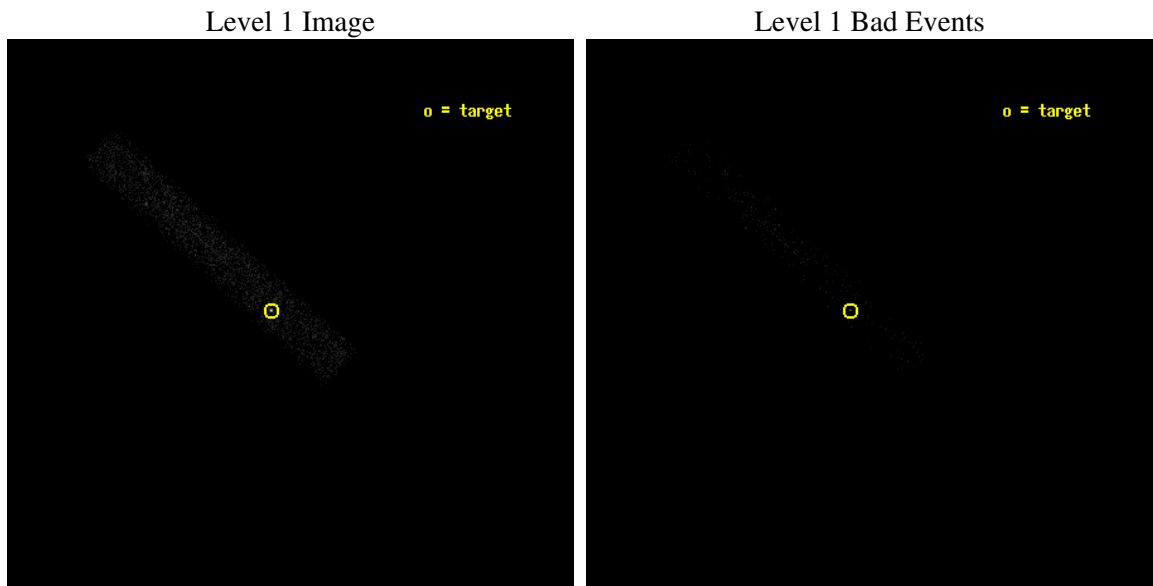
seq_num	700819
obs_id	4140
title	CHANDRA OBSERVATIONS OF THE FIRST SAMPLE OF RADIO-LOUD NARROW LINE SEYFERT I GALAXIES
observer	Dr. Sally Laurent-Muehleisen
object	FIRST J162901+400759
dtcycle	0
cycle	P
ra_targ	247.255417
dec_targ	40.133222
ra_nom	247.2447331738
dec_nom	40.128160292191
roll_nom	222.03414721236
revision	2
ontime	3428.0000510812
livetime	3109.0151016517
ontime7	3428.0000510812
l2events	2777



## 2 OBI

### 2.1 OBI

#### 2.1.1 Images



#### 2.1.2 Bias

Chip 7



### 2.1.3 Parameters

obi_num	0
ascdsver	7.6.8
caldbver	3.2.2
date	2006-07-14T05:58:57
revision	2

sched_exp_time	2967.000000
ontime	3827.2989629209
ontime7	3827.2989629209
l1events	5443

### 2.1.4 Events

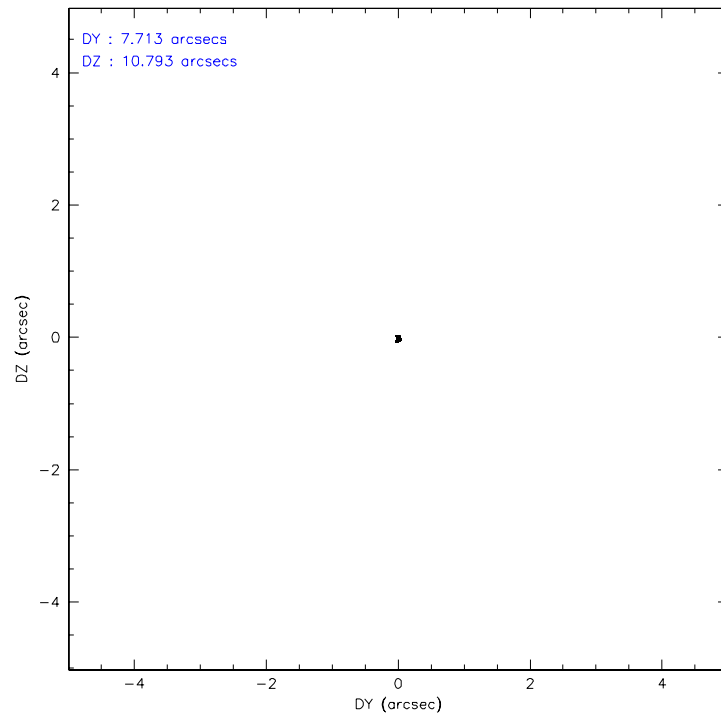
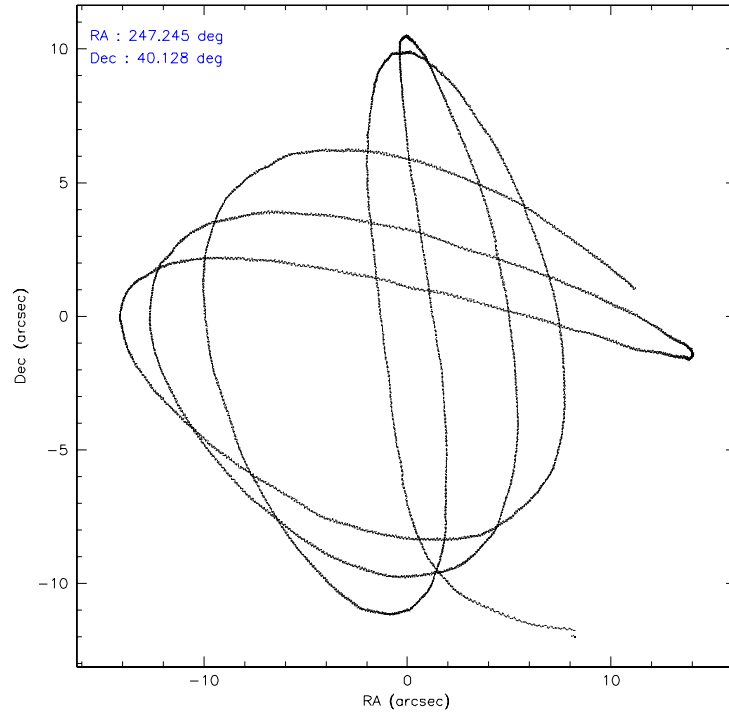
	<b>ccd 7</b>
level 1 events	5443
rejected events	2609
rejected %	47%

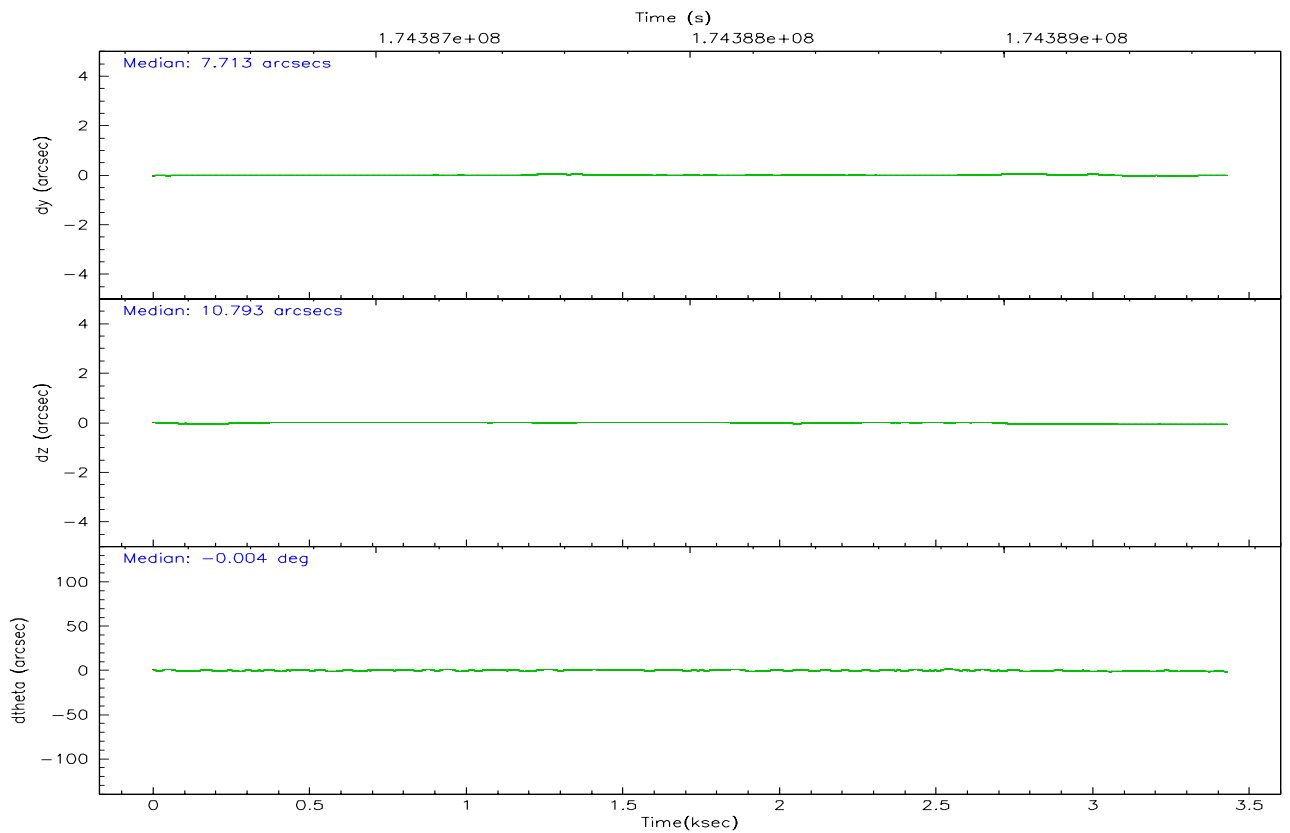
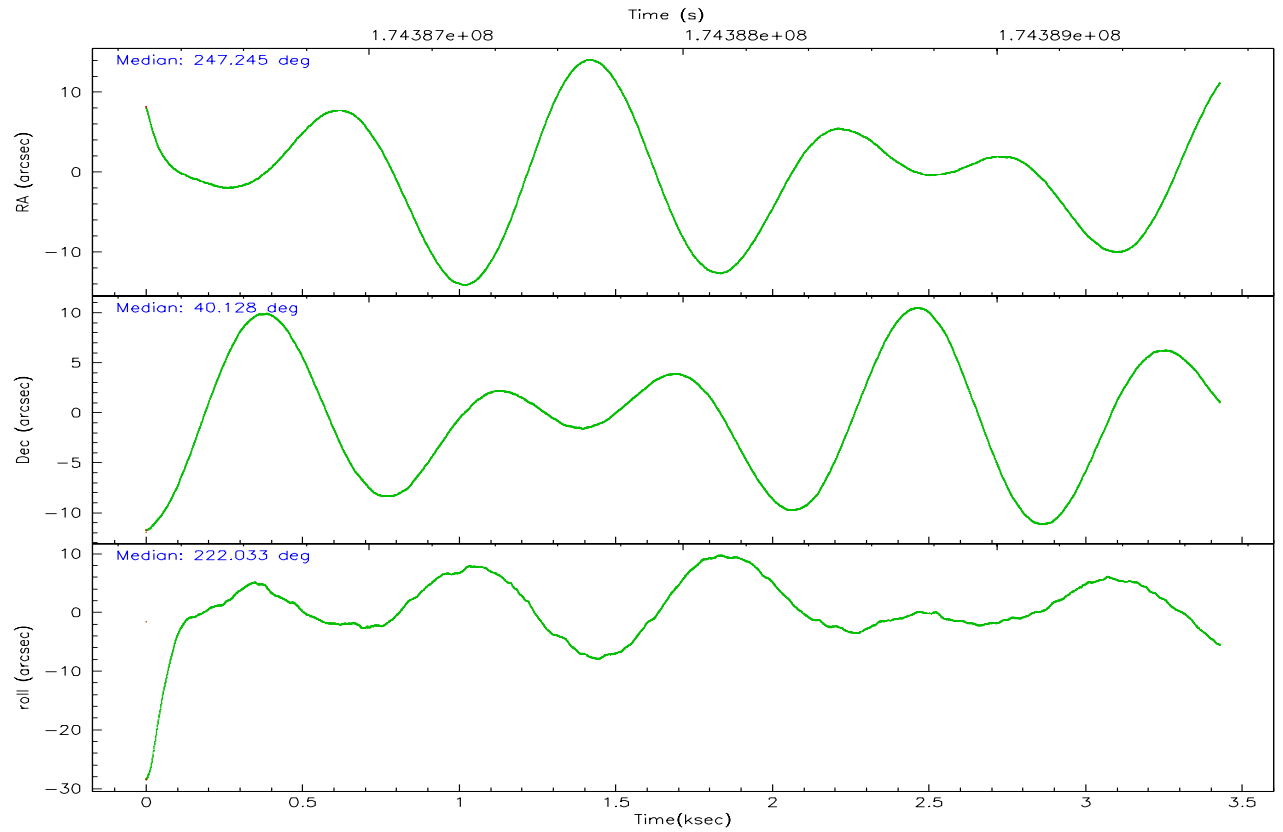
	<b>ccd 7</b>
grade 0 events	910
	16%
grade 1 events	9
	0%
grade 2 events	593
	10%
grade 3 events	295
	5%
grade 4 events	282
	5%
grade 5 events	293
	5%
grade 6 events	944
	17%
grade 7 events	2117
	38%

## 2.2 Compared Parameters

Parameter	Planned	Actual	Parameter	Planned	Actual
Instrument	ACIS	ACIS	Obspar format version number	6	6
Detector	ACIS-7	ACIS-7	Obspar file type	PREDICTED	ACTUAL
Grating	NONE	NONE	Obspar update status	NONE	UPDATED
Data mode	FAINT	FAINT	On-chip summing requested	N	N
Observation mode	POINTING	POINTING	Subarray requested	1/8	1/8
Pointing RA	247.255214	247.2447331738028	Subarray start row	0	449
Pointing Dec	40.154122	40.12816029219124	Subarray row count	1024	128
Pointing Roll	221.870830	222.0341472123597	Alternating exposures requested	N	N
SIM focus pos (mm)	-0.684267	-0.6828225247311905	Primary exposure time	0.000000	0.4
SIM defocus (mm)	0	0.001444936568705701			
SIM translation stage pos (mm)	-190.132523	-190.1400660498719			
SIM translation stage offset (mm)	0	0.00754346686406393			
Observation start time	174386750.184000	174385651.93113			
Observation start date	2003-07-12T08:44:46	2003-07-12T08:27:31			
Observation end time	174389717.184000	174390416.13133			
Observation end date	2003-07-12T09:34:13	2003-07-12T09:46:56			
Read mode	TIMED	TIMED			

## 2.3 Aspect





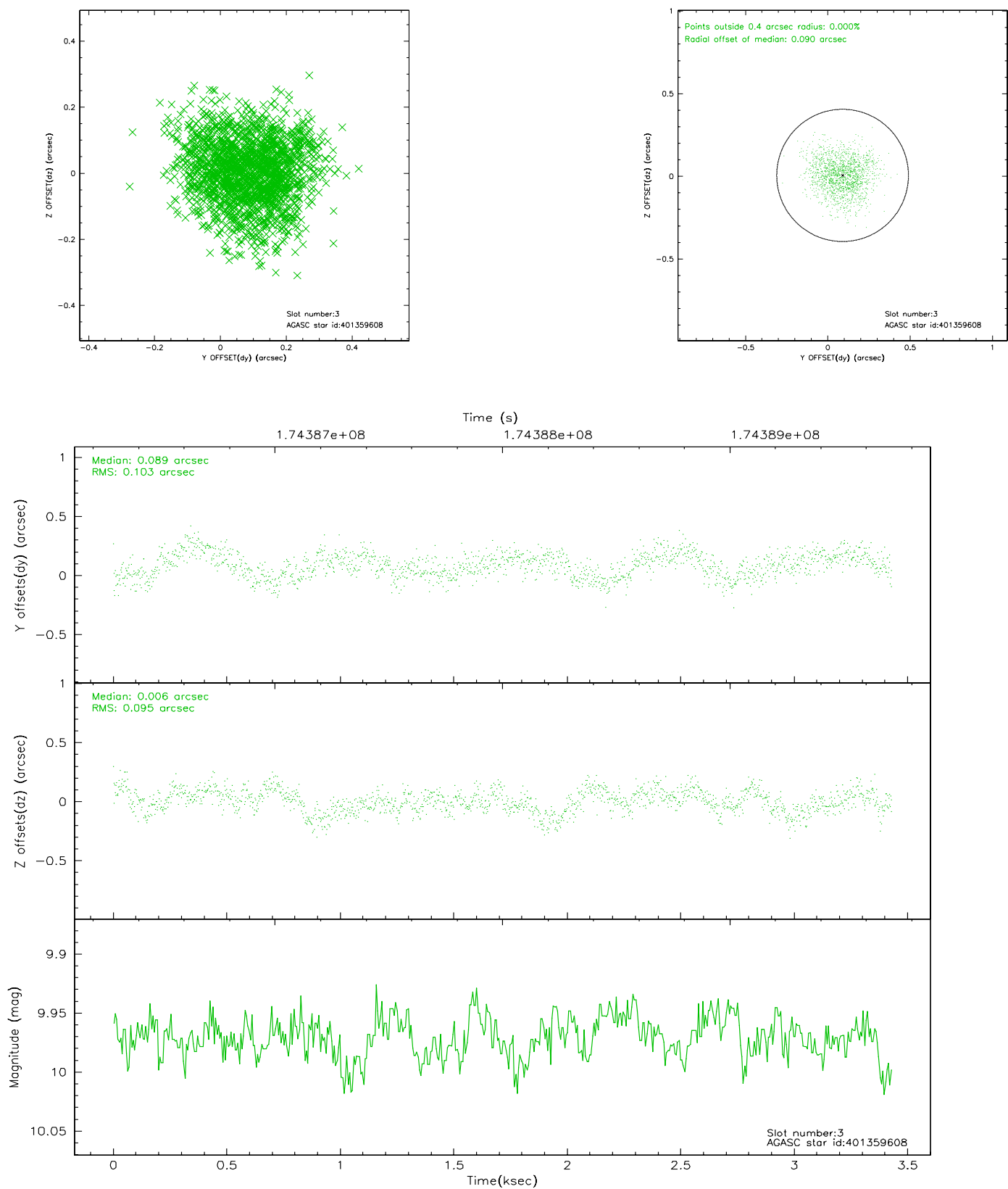
### Slot Statistics

slot	status	id	mag	n_pts	med_dy	med_dz	dr1	dr2	ra	dec	mean_y	mean_z
0	FID	ACIS-S-1	7.18	837	0.013	-0.050	0.007	0.013	0.000000	0.000000	935.53	-1727.74
1	FID	ACIS-S-2	7.10	837	-0.043	0.010	0.006	0.010	0.000000	0.000000	-759.40	-1734.11
2	FID	ACIS-S-4	7.20	837	0.005	0.046	0.005	0.009	0.000000	0.000000	2151.96	174.58
3	GUIDE	401359608	9.97	1674	0.089	0.006	0.154	0.237	246.605613	39.978868	1751.64	-730.98
4	GUIDE	401480560	9.77	1642	0.010	-0.082	0.113	0.181	246.896626	39.730877	1756.24	470.19
5	GUIDE	401481984	8.70	1674	0.012	-0.005	0.067	0.105	247.136950	39.776672	1151.90	793.67
6	GUIDE	401482200	9.90	1672	-0.029	0.068	0.134	0.203	247.528025	39.601967	763.48	1985.12
7	GUIDE	401877520	8.47	1673	-0.078	0.017	0.073	0.120	247.833314	40.456560	-1908.62	243.66

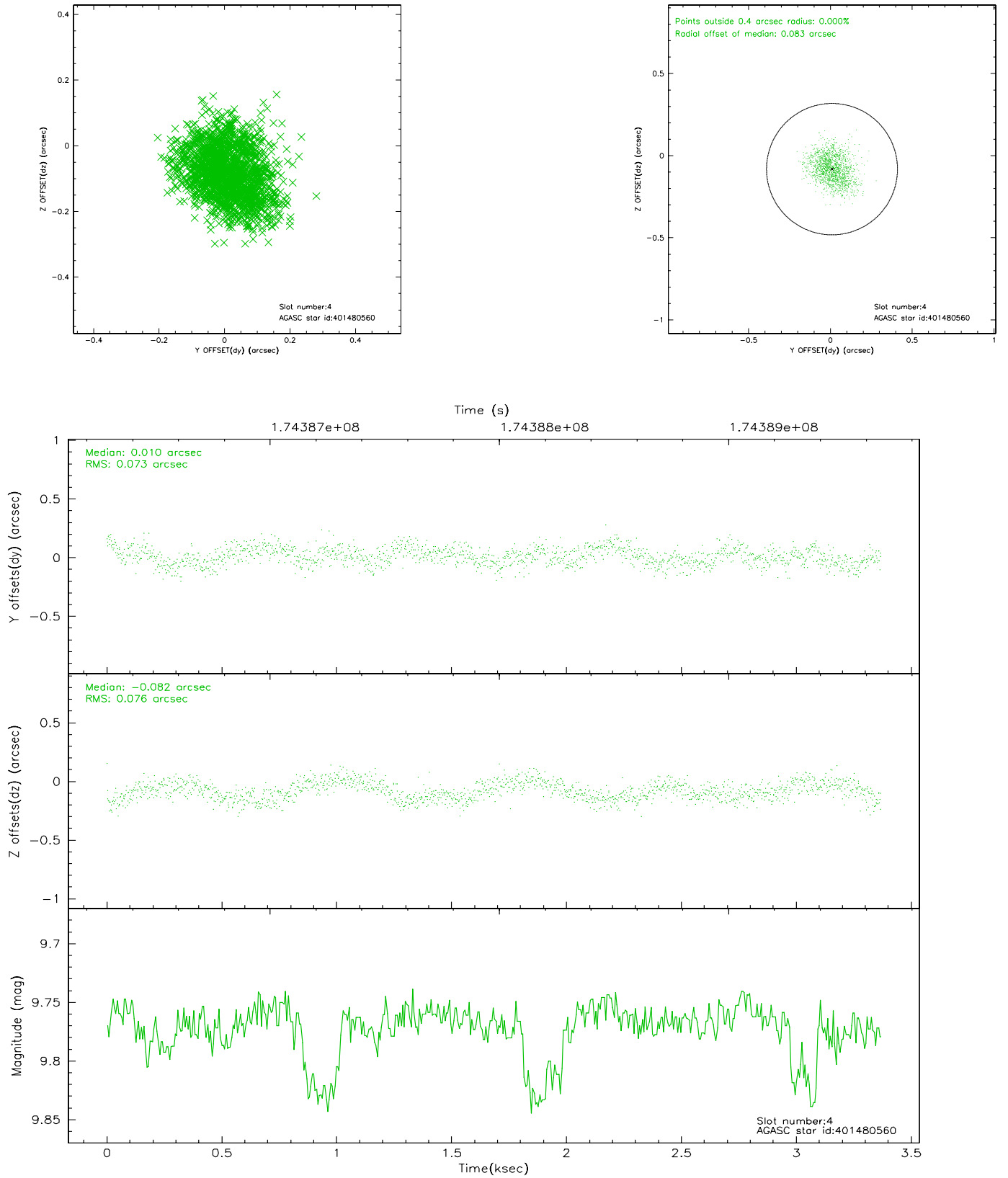


## 2.4 Star Slots

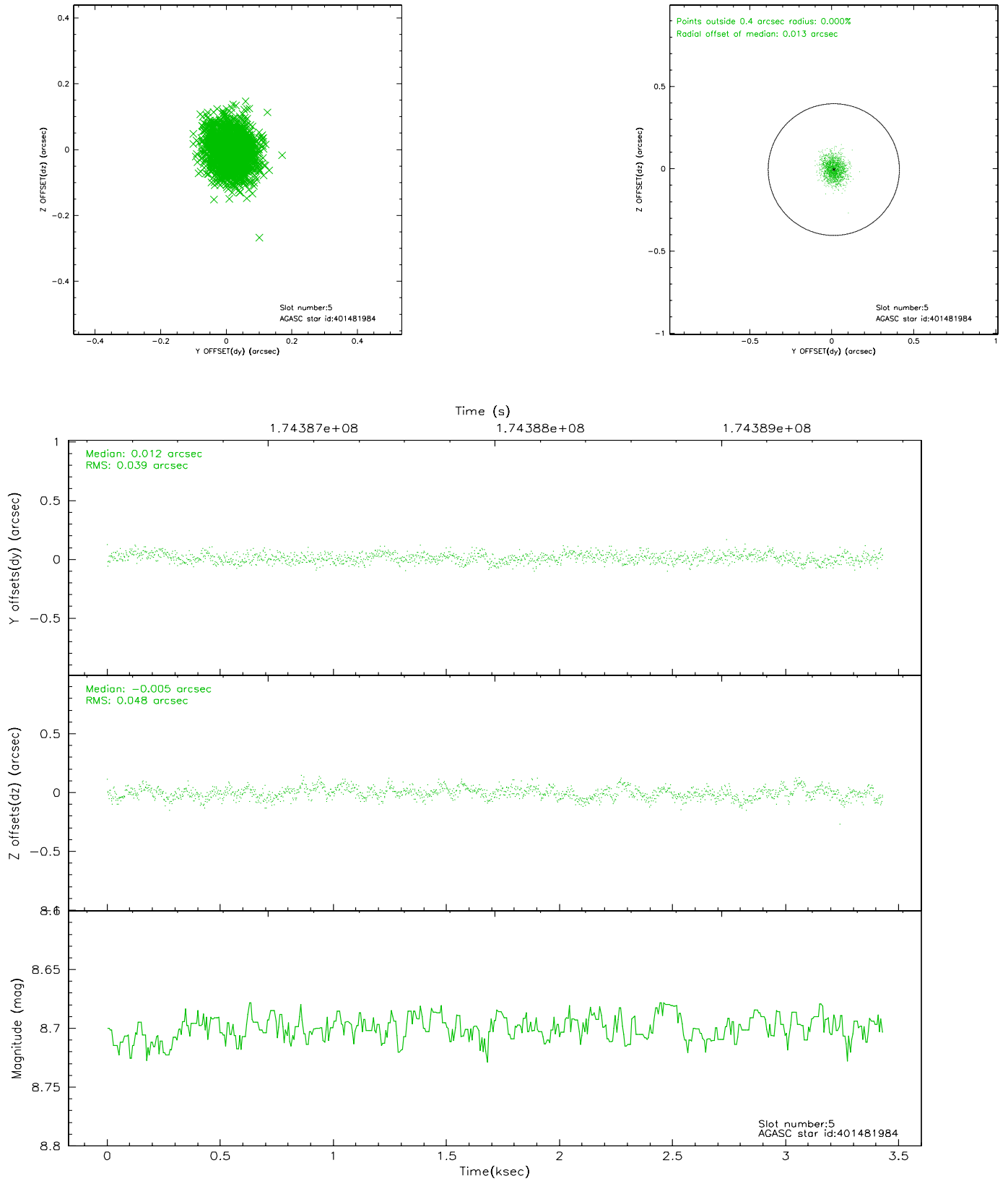
### 2.4.1 Slot 3



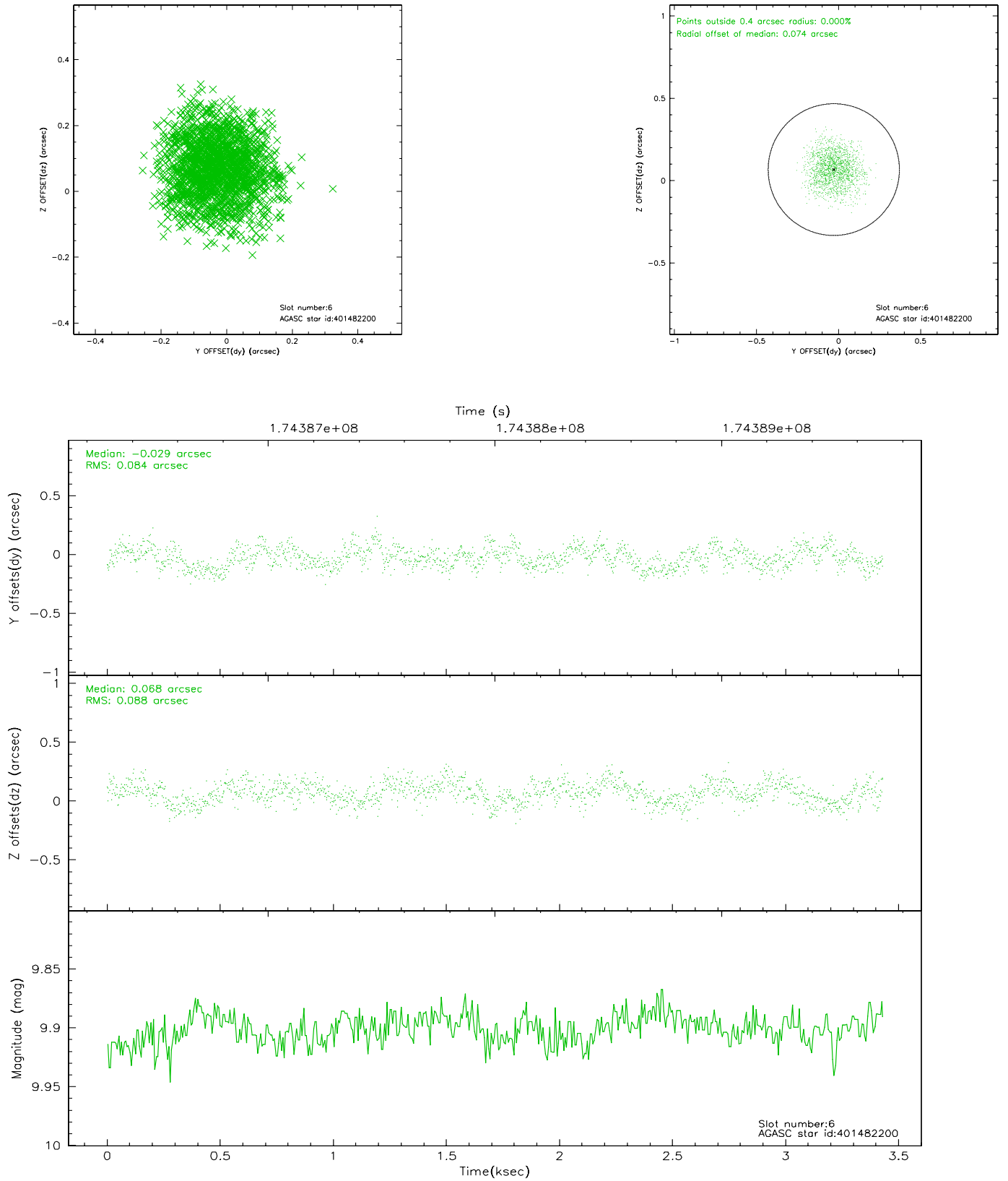
## 2.4.2 Slot 4



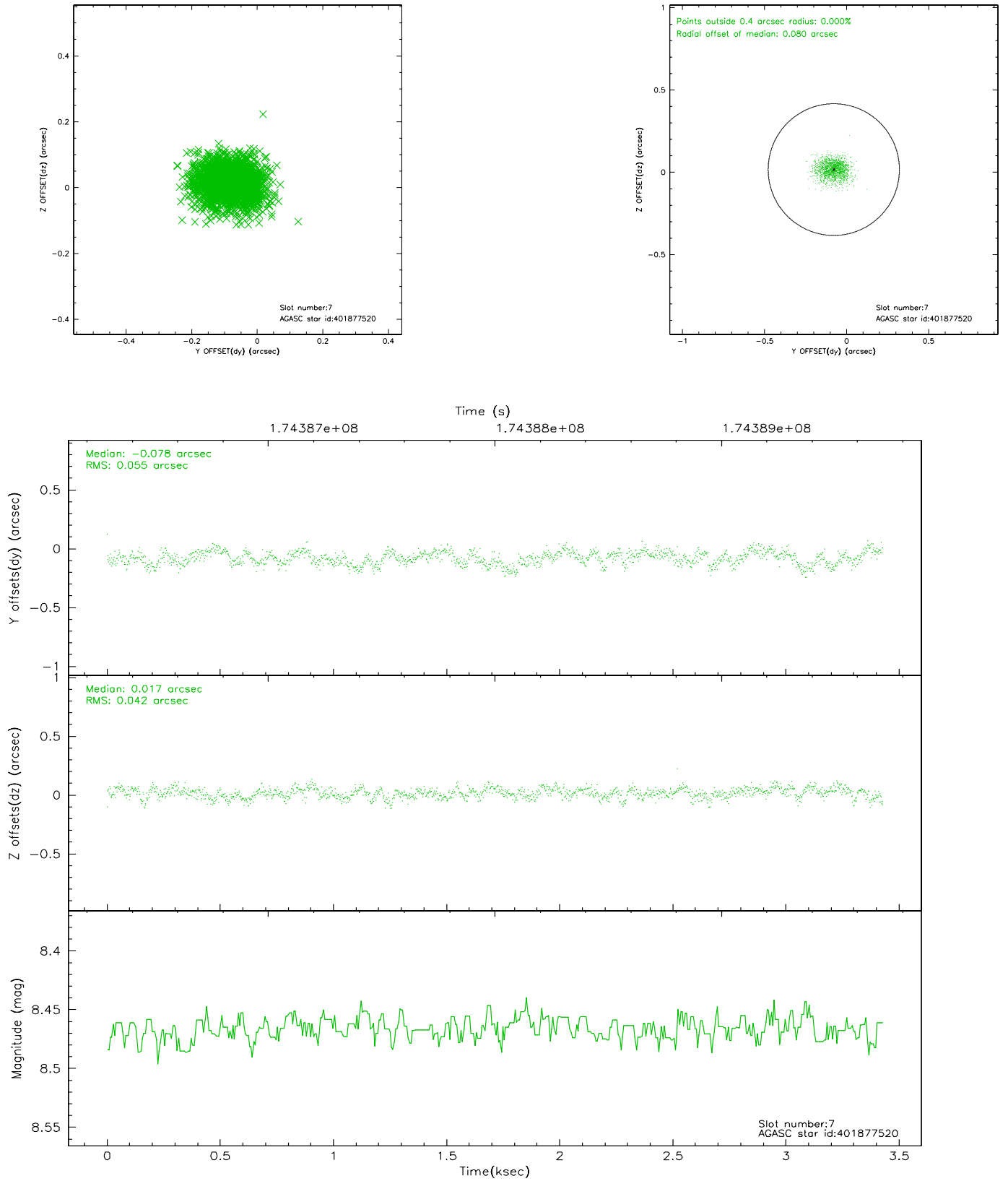
### 2.4.3 Slot 5



## 2.4.4 Slot 6

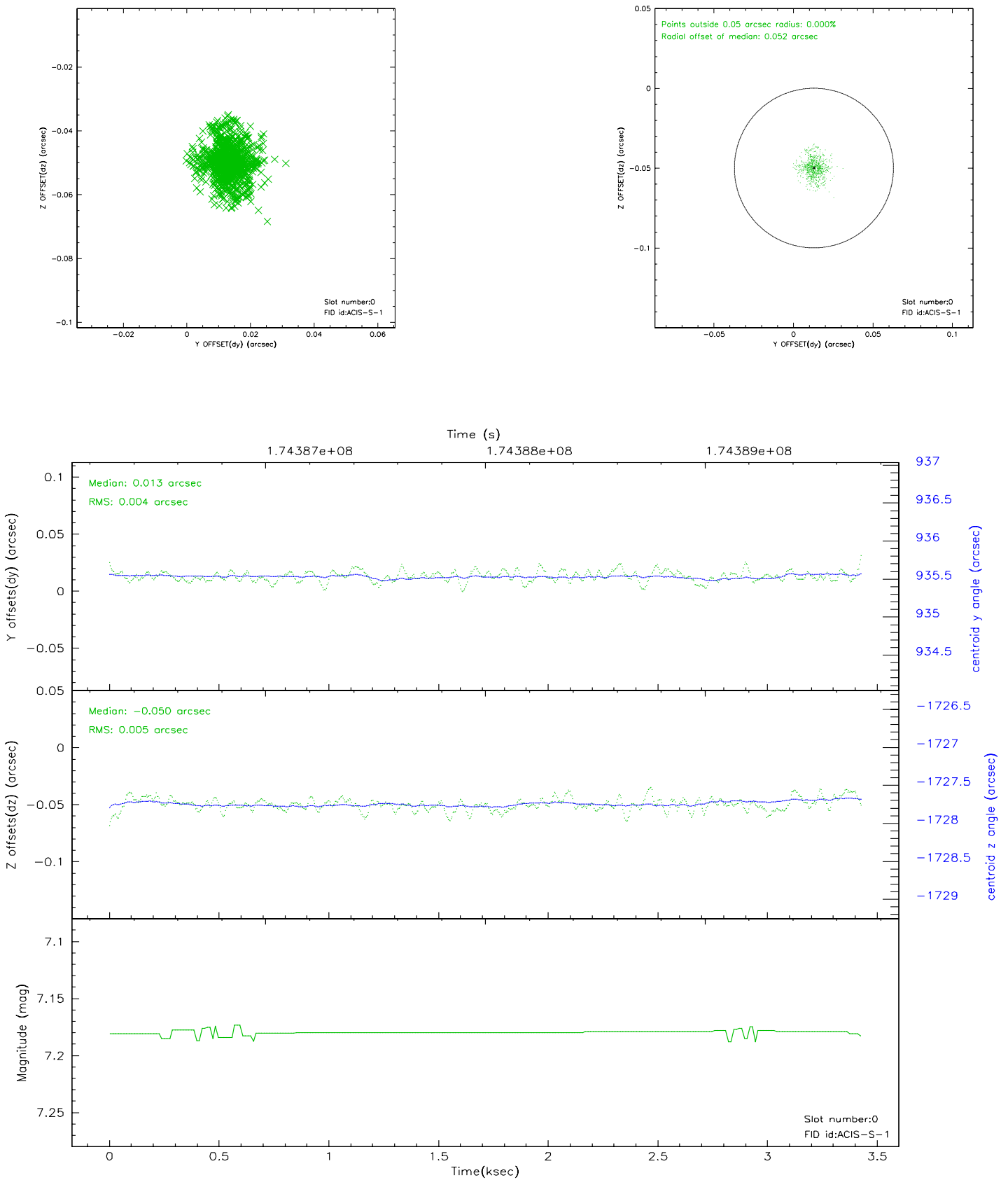


## 2.4.5 Slot 7

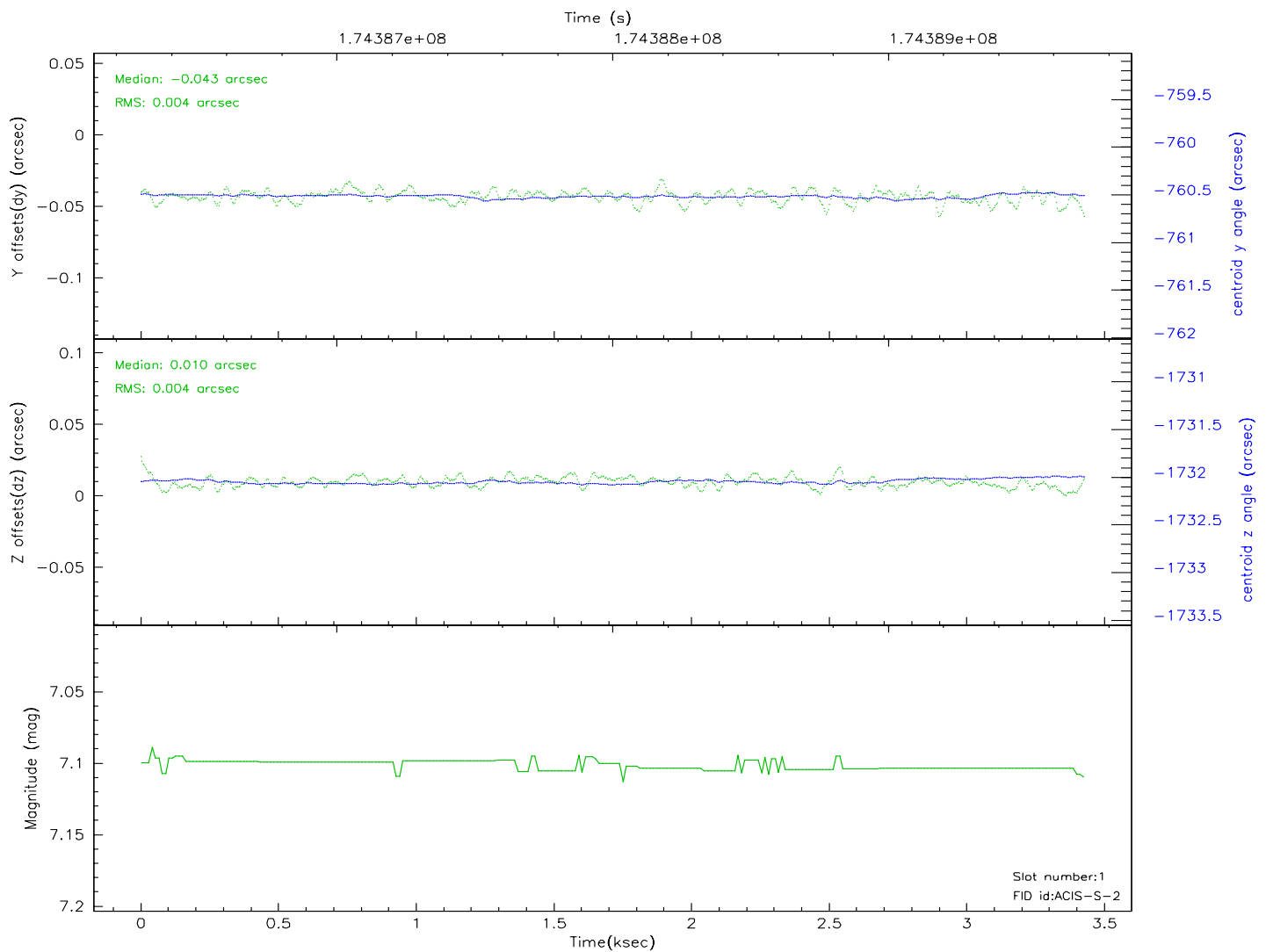
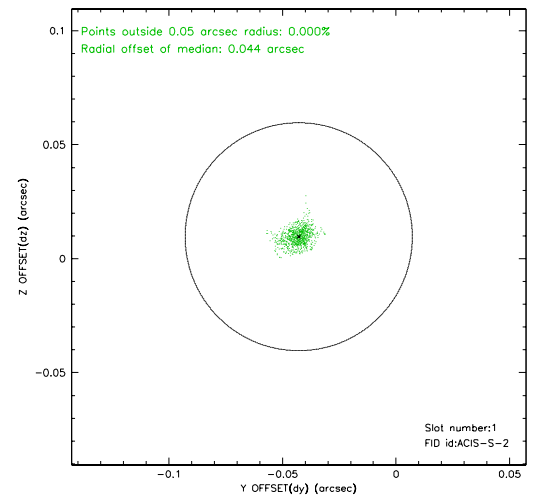
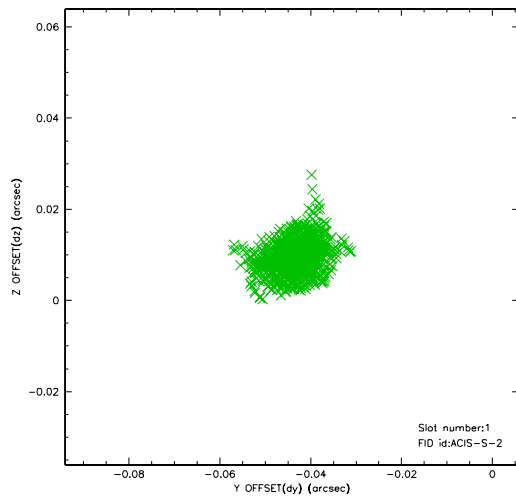


## 2.5 FID Slots

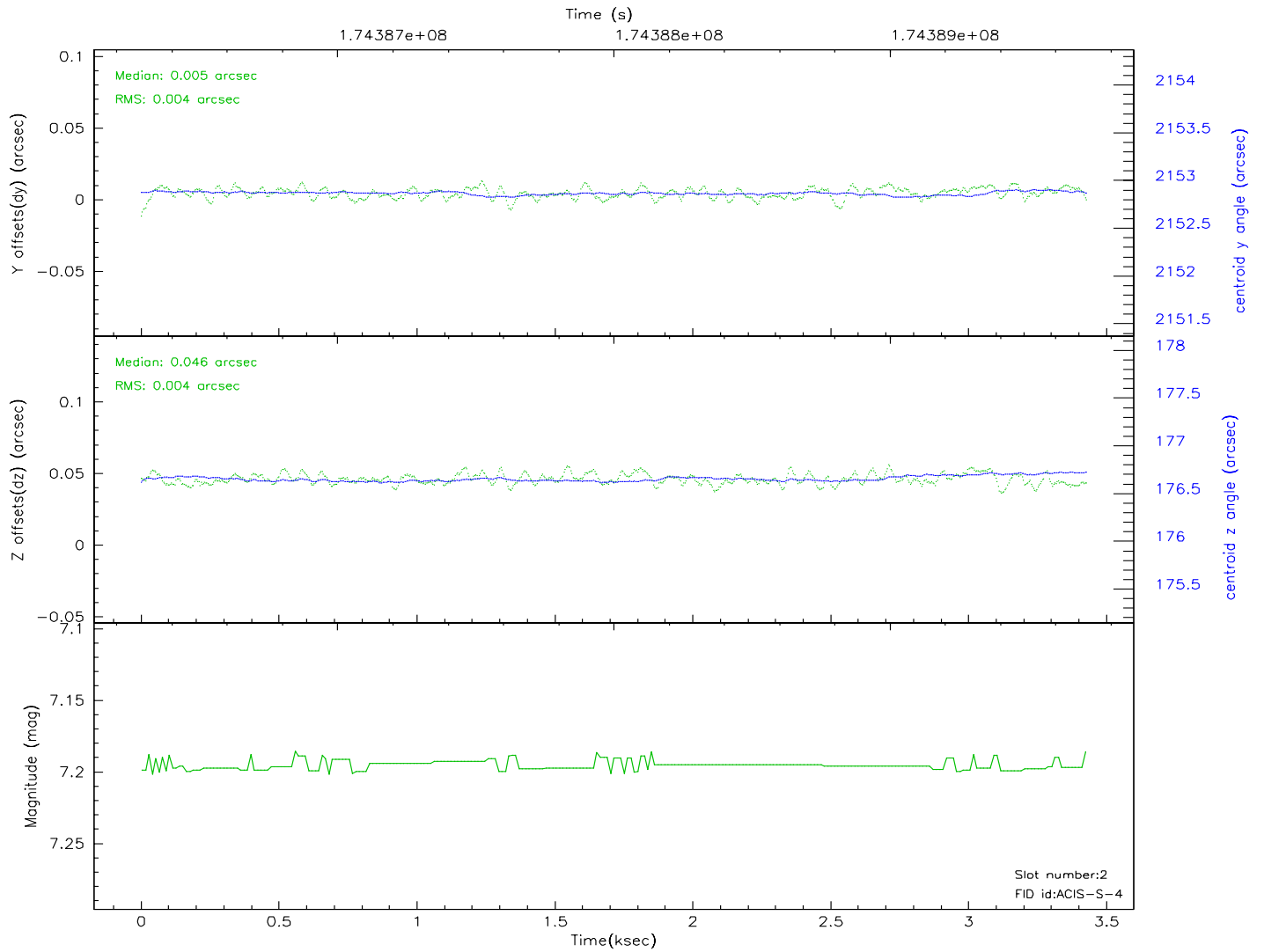
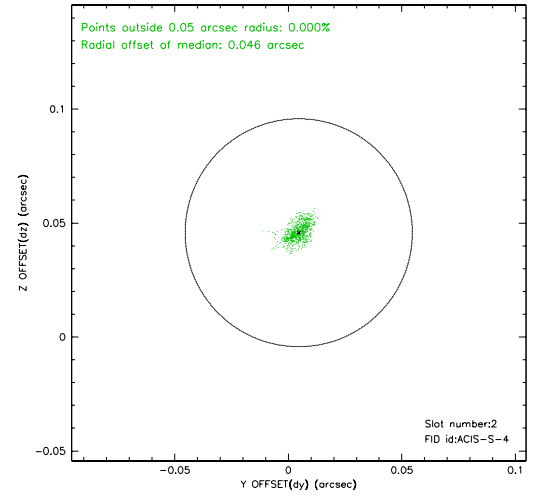
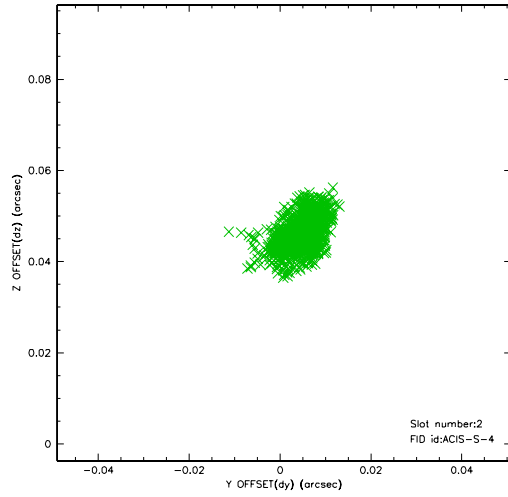
### 2.5.1 Slot 0



## 2.5.2 Slot 1



### 2.5.3 Slot 2





### 3 Point Sources

## A Summary

### A.1 Status

V&V Scientist	Beth Sundheim
V&V Date (YYYY-MM-DD)	2006.07.14
V&V Edition	1
V&V Disposition and Status	OK
V&V Charge Time	3.428

### A.2 Comments