

# V&V Reference Report

## L2 ASCDS Version : 7.6.8.1

Observation 4110 - L2 Version 001  
Chandra X-Ray Center

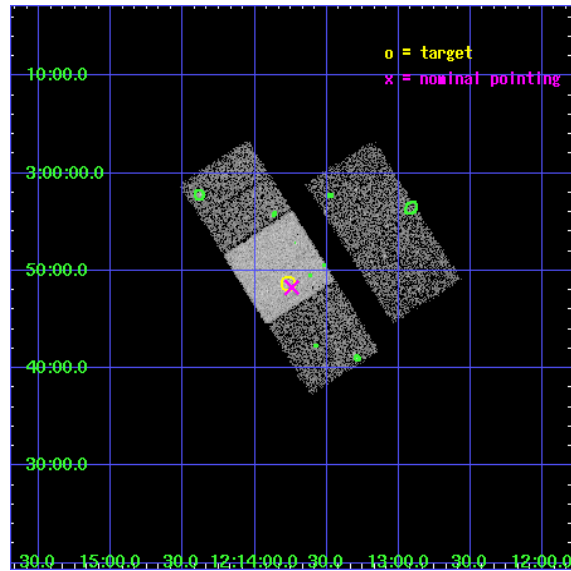
L2 Processing Date : Aug 4 2006

## Contents

<b>1</b>	<b>Front</b>	<b>2</b>
<b>2</b>	<b>OBI</b>	<b>3</b>
2.1	OBI . . . . .	3
2.1.1	Images . . . . .	3
2.1.2	Bias . . . . .	3
2.1.3	Parameters . . . . .	4
2.1.4	Events . . . . .	4
2.2	Compared Parameters . . . . .	5
2.3	Aspect . . . . .	6
2.4	Star Slots . . . . .	9
2.4.1	Slot 3 . . . . .	9
2.4.2	Slot 4 . . . . .	10
2.4.3	Slot 5 . . . . .	11
2.4.4	Slot 6 . . . . .	12
2.4.5	Slot 7 . . . . .	13
2.5	FID Slots . . . . .	14
2.5.1	Slot 0 . . . . .	14
2.5.2	Slot 1 . . . . .	15
2.5.3	Slot 2 . . . . .	16
<b>3</b>	<b>Point Sources</b>	<b>17</b>
<b>A</b>	<b>Summary</b>	<b>18</b>
A.1	Status . . . . .	18
A.2	Comments . . . . .	18

# 1 Front

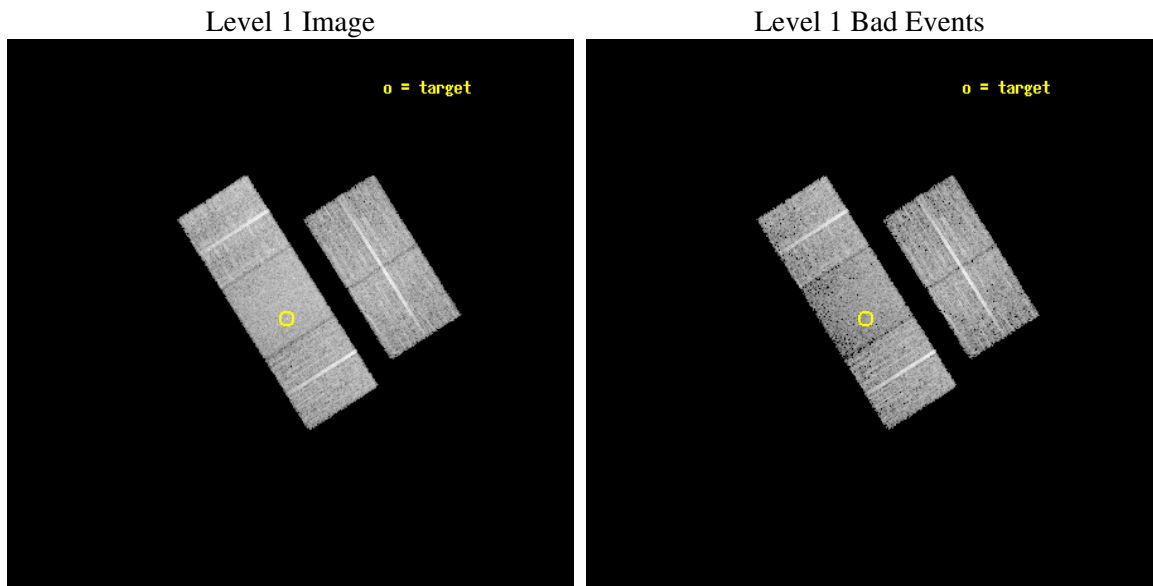
seq_num	700789
obs_id	4110
title	THE X-RAY PROPERTIES OF ULTRALUMINOUS INFRARED GALAXIES (ULIGS)
observer	Prof. Andrew Wilson
object	F12112+0305
dtcycle	0
cycle	P
ra_targ	183.442083
dec_targ	2.811778
ra_nom	183.43554254545
dec_nom	2.8046431895529
roll_nom	237.6730659874
revision	2
ontime	10161.799980462
livetime	10029.028582709
ontime2	10161.799980462
ontime3	10158.659020215
ontime6	10161.799980462
ontime7	10161.799980462
ontime8	10161.799980462
l2events	43013



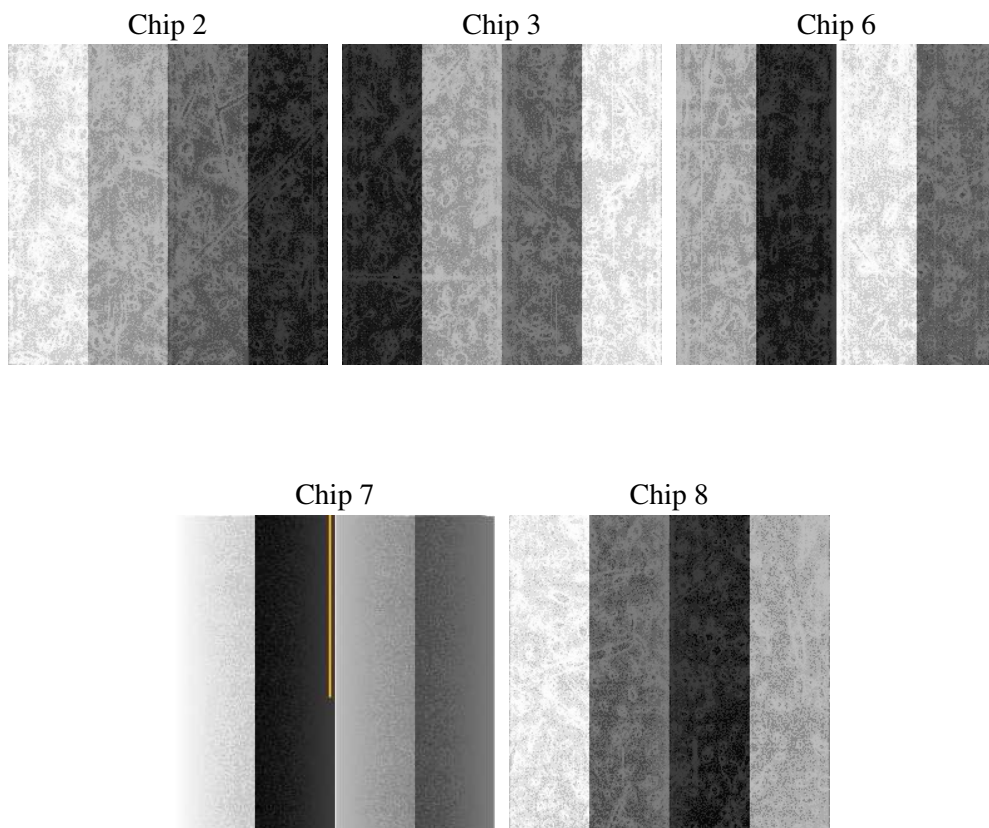
## 2 OBI

### 2.1 OBI

#### 2.1.1 Images



#### 2.1.2 Bias



### 2.1.3 Parameters

obi_num	0
ascdsver	7.6.8.1
caldbver	3.2.2
date	2006-08-04T18:47:55
revision	2

sched_exp_time	10000.000000
ontime	10638.57739979
ontime2	10638.57739979
ontime3	10635.436439544
ontime6	10638.57739979
ontime7	10638.57739979
ontime8	10638.57739979
l1events	298988

### 2.1.4 Events

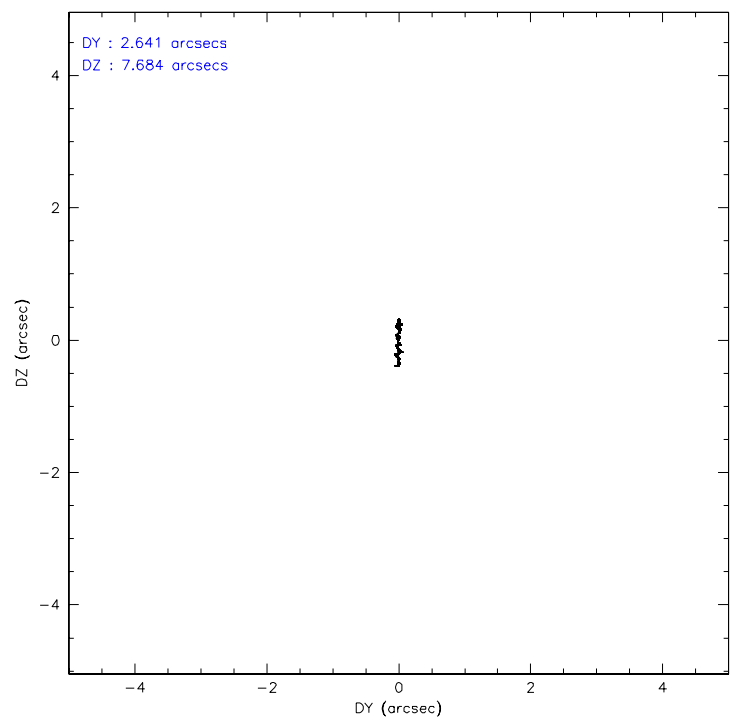
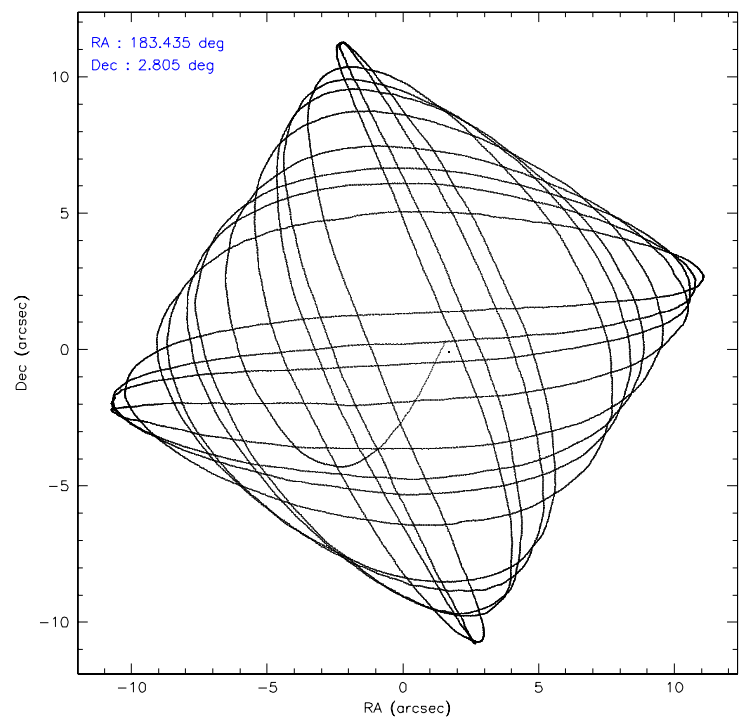
	ccd 2	ccd 3	ccd 6	ccd 7	ccd 8
level 1 events	55596	56018	56991	60887	69496
rejected events	50468	51078	51503	36206	54971
rejected %	90%	91%	90%	59%	79%

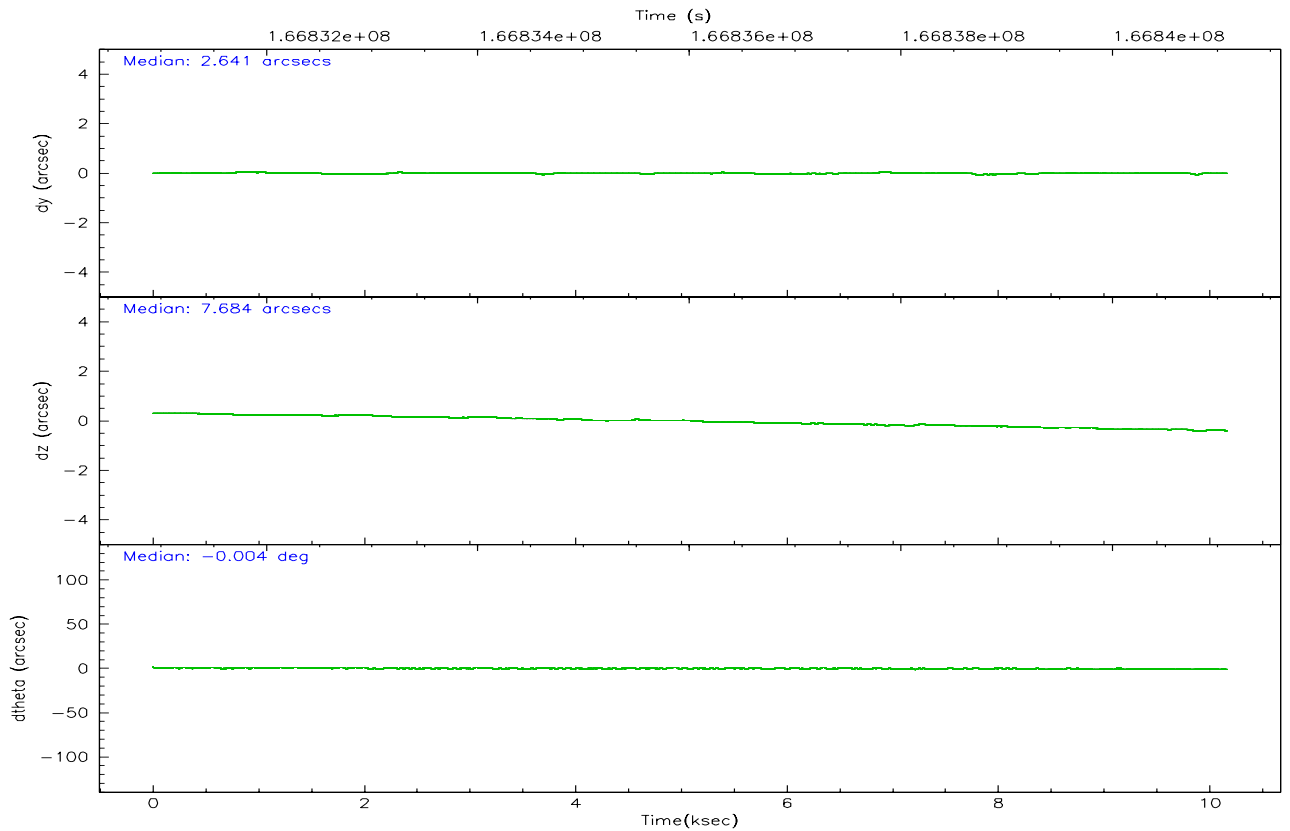
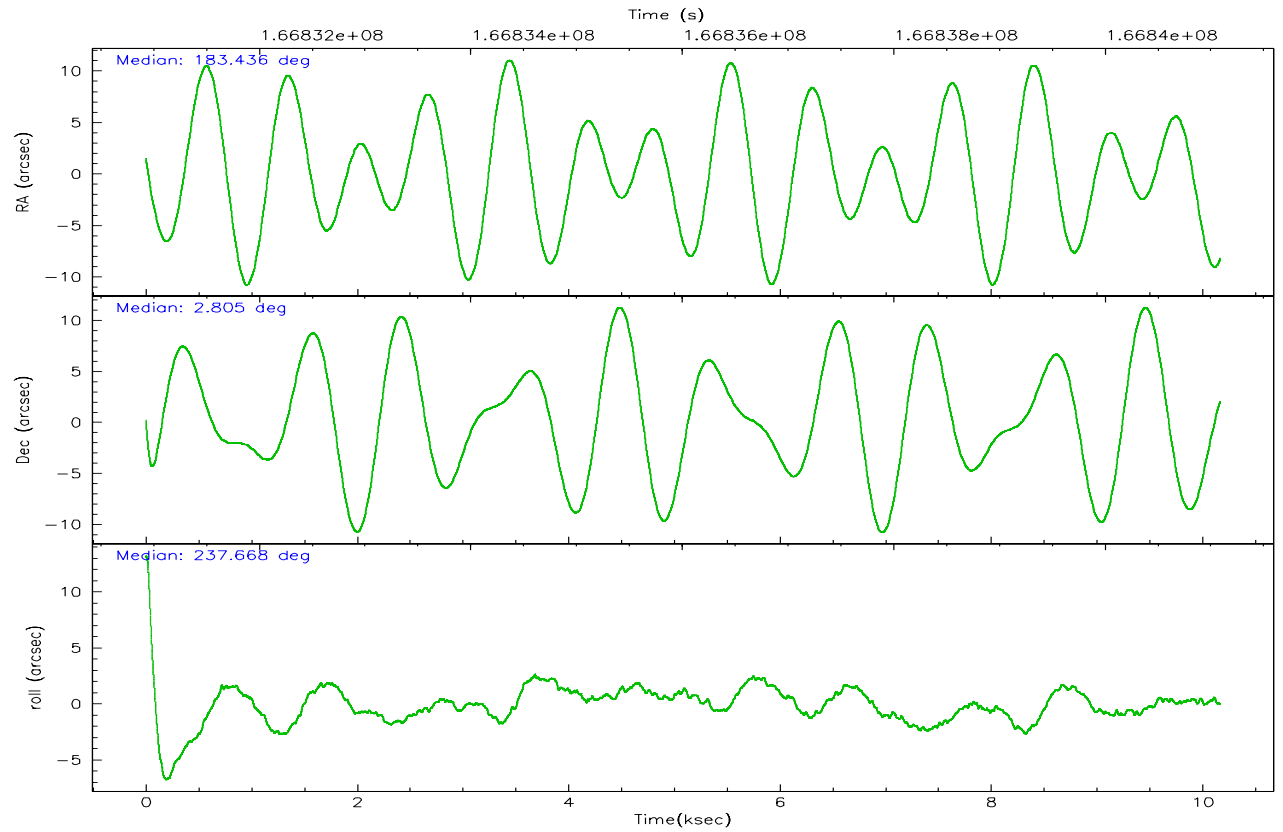
	ccd 2	ccd 3	ccd 6	ccd 7	ccd 8
grade 0 events	1911	1902	2041	1702	4829
	3%	3%	3%	2%	6%
grade 1 events	23	29	22	37	37
	0%	0%	0%	0%	0%
grade 2 events	1243	1051	1233	6447	3363
	2%	1%	2%	10%	4%
grade 3 events	654	603	670	1627	1861
	1%	1%	1%	2%	2%
grade 4 events	617	586	651	1570	1646
	1%	1%	1%	2%	2%
grade 5 events	1759	2024	2175	4711	3013
	3%	3%	3%	7%	4%
grade 6 events	934	1024	1183	14521	3796
	1%	1%	2%	23%	5%
grade 7 events	48455	48799	49016	30272	50951
	87%	87%	86%	49%	73%

## 2.2 Compared Parameters

Parameter	Planned	Actual	Parameter	Planned	Actual
Instrument	ACIS	ACIS	Obspar format version number	6	6
Detector	ACIS-23678	ACIS-23678	Obspar file type	PREDICTED	ACTUAL
Grating	NONE	NONE	Obspar update status	NONE	UPDATED
Data mode	VFAINT	VFAINT	On-chip summing requested	N	N
Observation mode	POINTING	POINTING	Subarray requested	NONE	NONE
Pointing RA	183.436290	183.4355425454462	Alternating exposures requested	N	N
Pointing Dec	2.831867	2.804643189552881	Primary exposure time	0.000000	3.1
Pointing Roll	237.516389	237.6730659874034			
SIM focus pos (mm)	-0.684267	-0.6828225247311905			
SIM defocus (mm)	0	0.001444936568705701			
SIM translation stage pos (mm)	-190.132523	-190.1400660498719			
SIM translation stage offset (mm)	0	0.00754346686406393			
Observation start time	166831093.184000	166829869.2357			
Observation start date	2003-04-15T21:57:09	2003-04-15T21:37:49			
Observation end time	166841093.184000	166841719.7737			
Observation end date	2003-04-16T00:43:49	2003-04-16T00:55:19			
Read mode	TIMED	TIMED			

## 2.3 Aspect





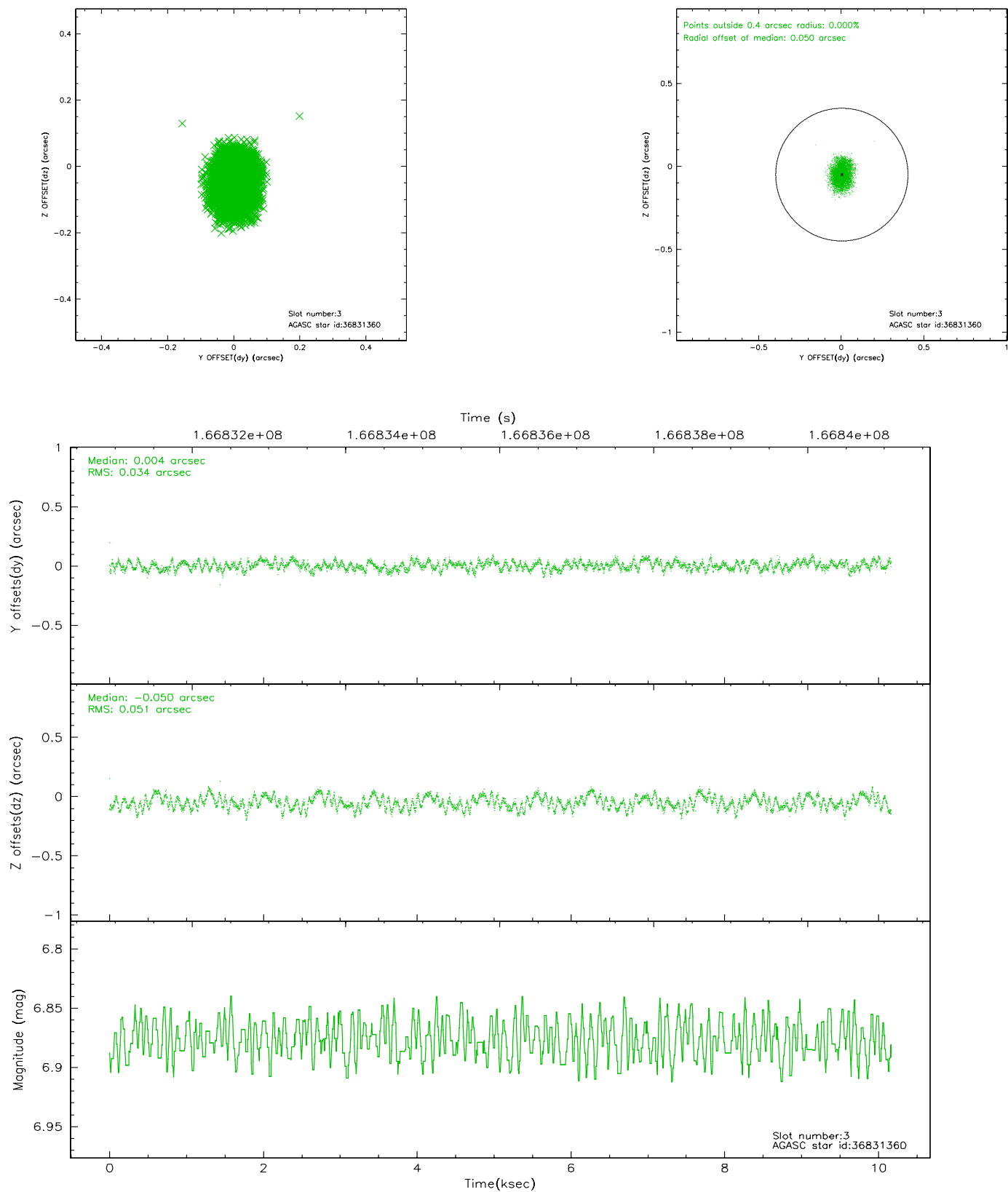
### Slot Statistics

slot	status	id	mag	n_pts	med_dy	med_dz	dr1	dr2	ra	dec	mean_y	mean_z
0	FID	ACIS-S-2	7.11	2480	-0.003	0.021	0.007	0.011	0.000000	0.000000	-755.27	-1728.82
1	FID	ACIS-S-4	7.20	2480	-0.057	-0.004	0.005	0.009	0.000000	0.000000	2157.72	179.10
2	FID	ACIS-S-5	7.24	2480	0.029	-0.008	0.006	0.010	0.000000	0.000000	-1807.41	173.36
3	GUIDE	36831360	6.88	4961	0.004	-0.050	0.067	0.101	183.482386	2.260219	1647.18	1245.30
4	GUIDE	37225184	9.72	4956	0.033	-0.016	0.091	0.148	183.322910	3.026545	-371.61	-719.84
5	GUIDE	37225816	8.32	4959	-0.008	0.096	0.099	0.147	182.886175	2.608011	1742.17	-1235.96
6	GUIDE	37226768	9.31	4955	0.018	-0.025	0.093	0.145	183.991879	3.019779	-1643.37	1321.16
7	GUIDE	37230440	7.75	4960	-0.051	-0.004	0.060	0.100	183.124640	3.404103	-1136.38	-2051.07

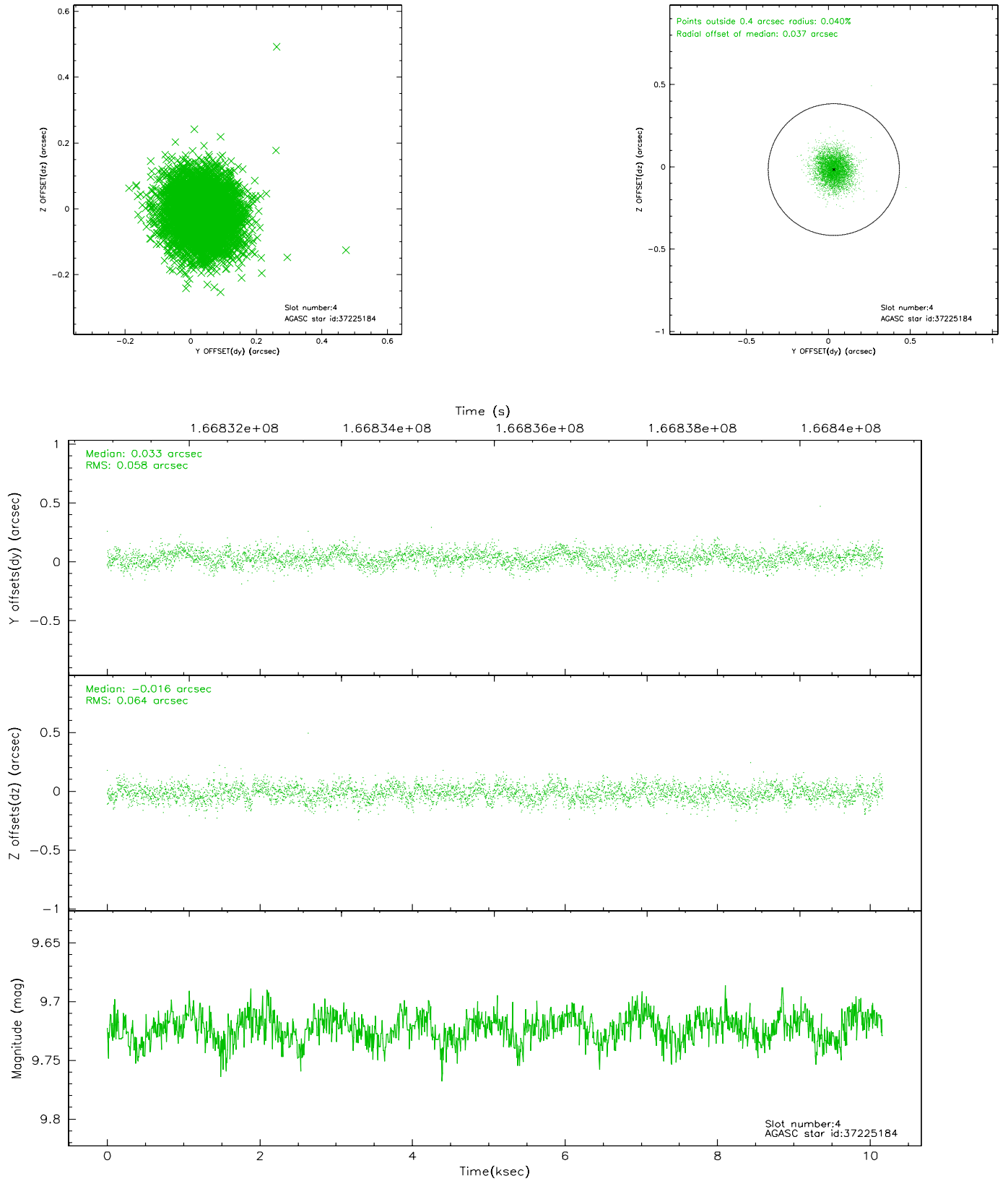


## 2.4 Star Slots

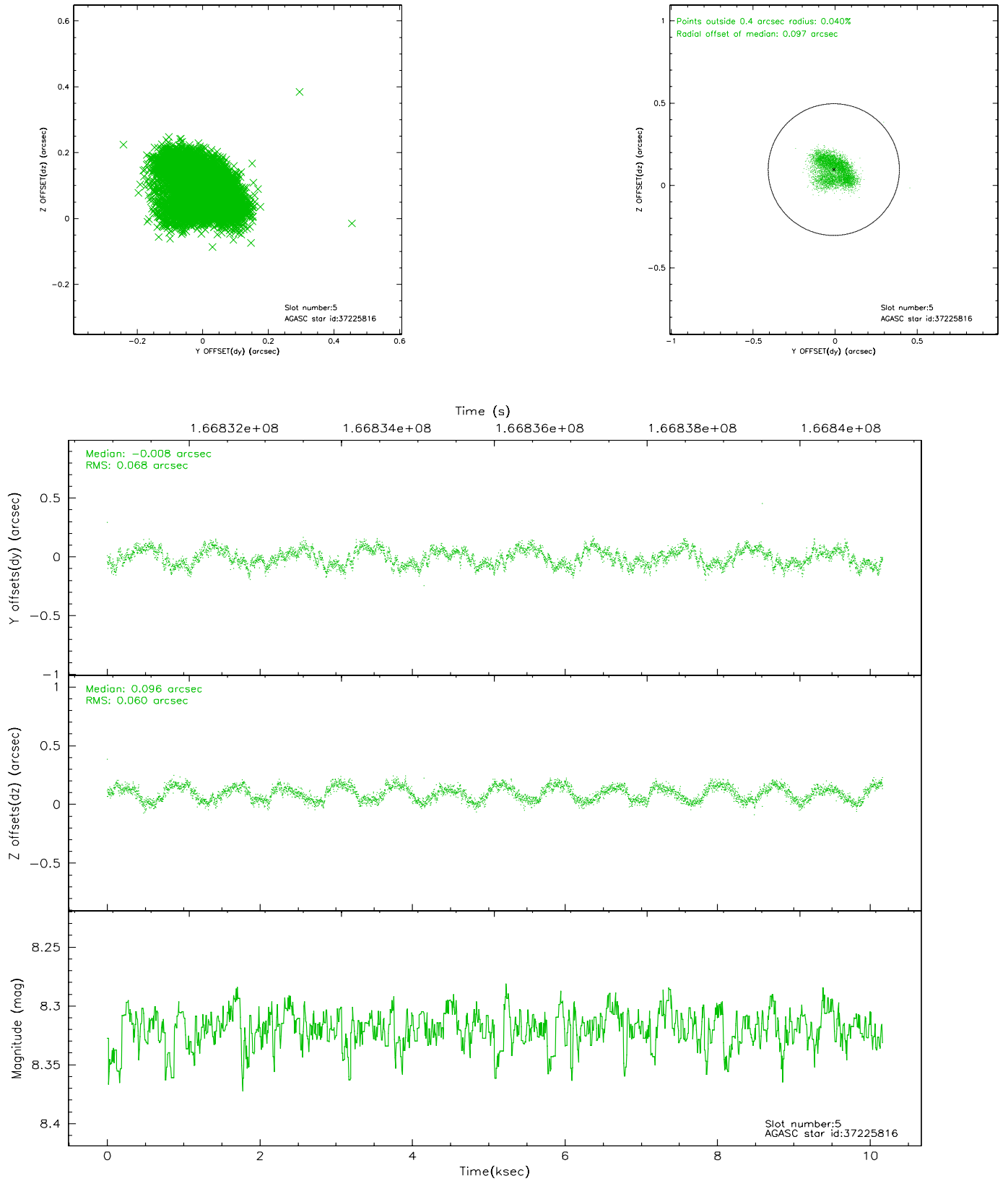
### 2.4.1 Slot 3



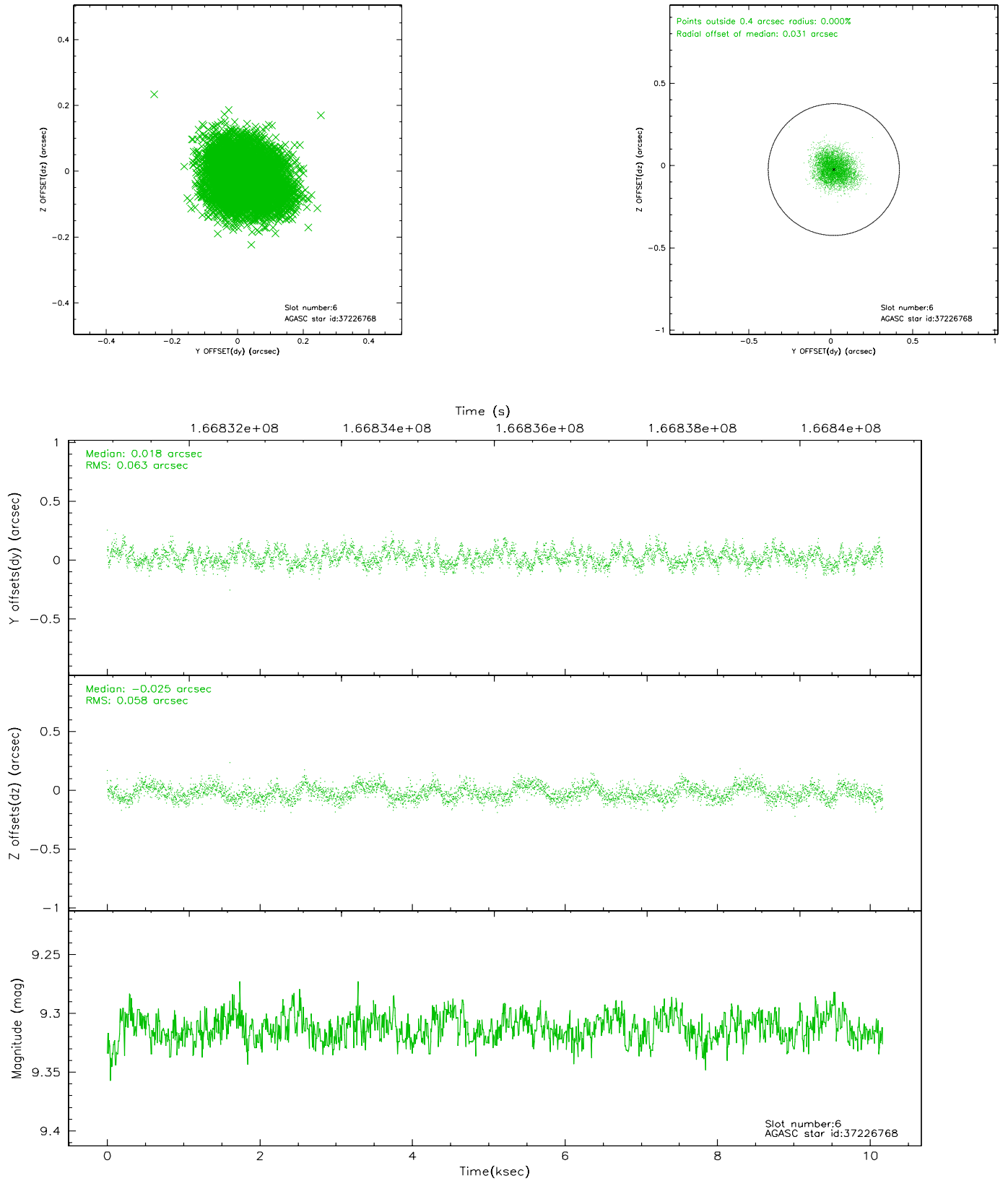
## 2.4.2 Slot 4



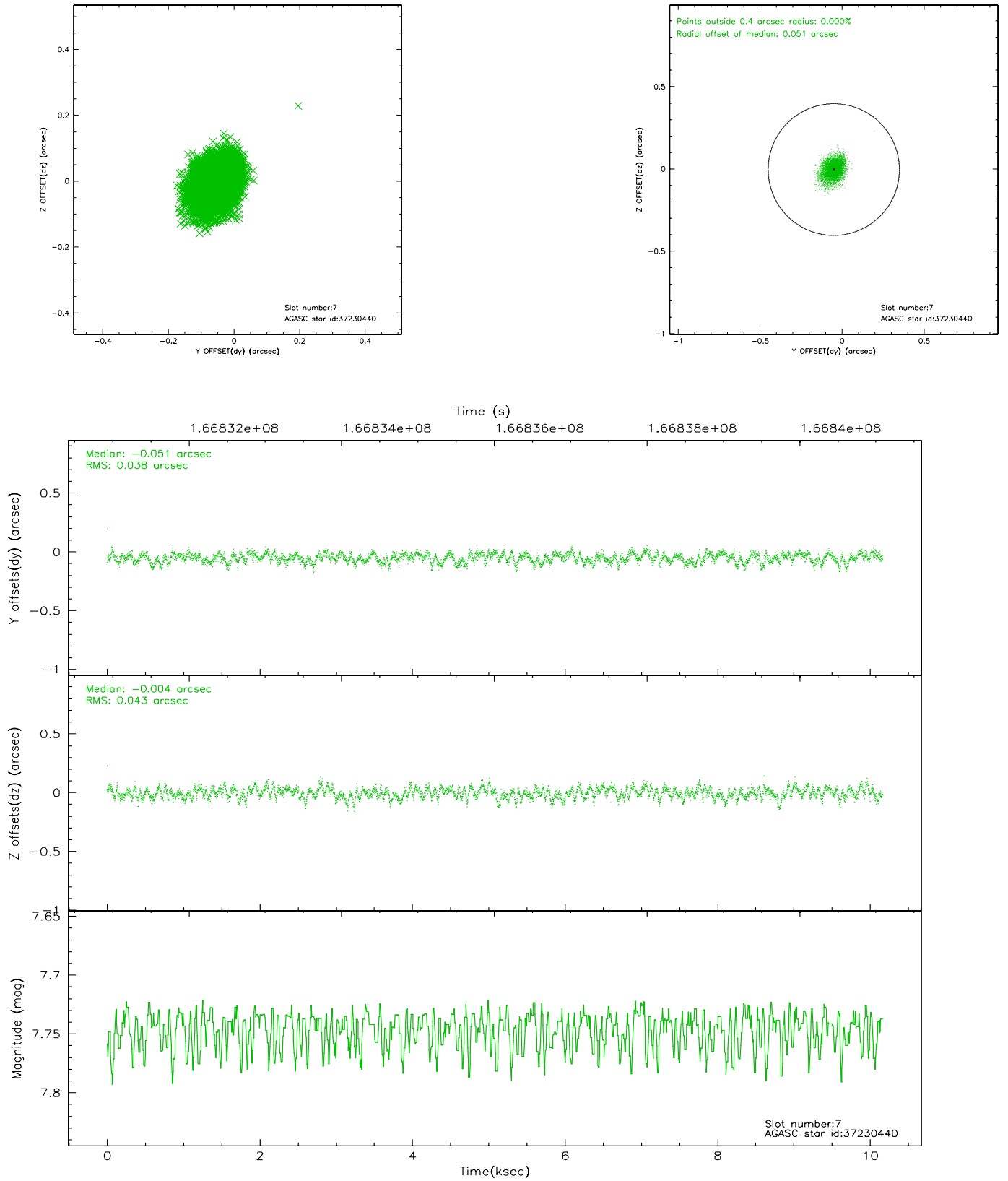
### 2.4.3 Slot 5



## 2.4.4 Slot 6

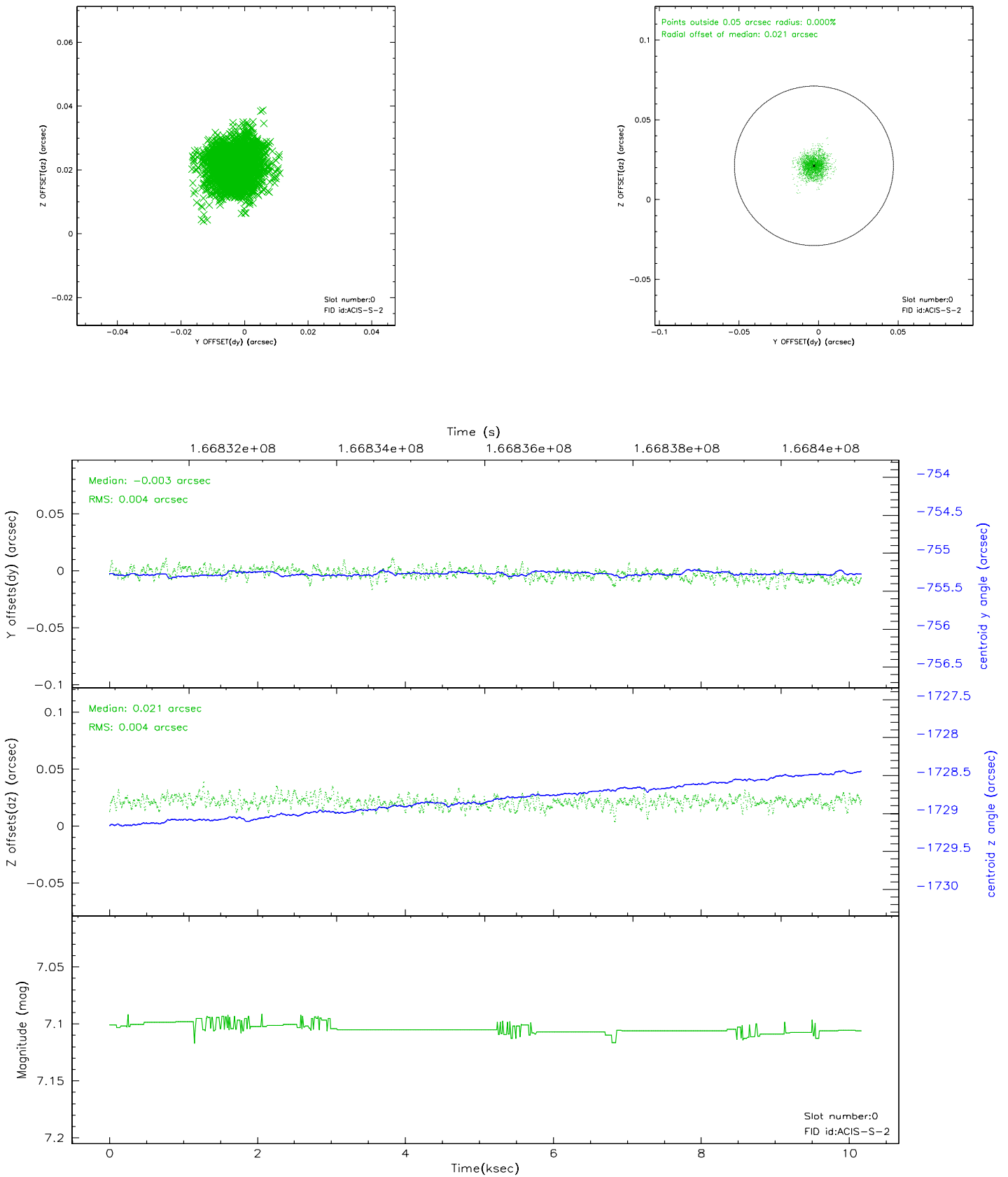


## 2.4.5 Slot 7

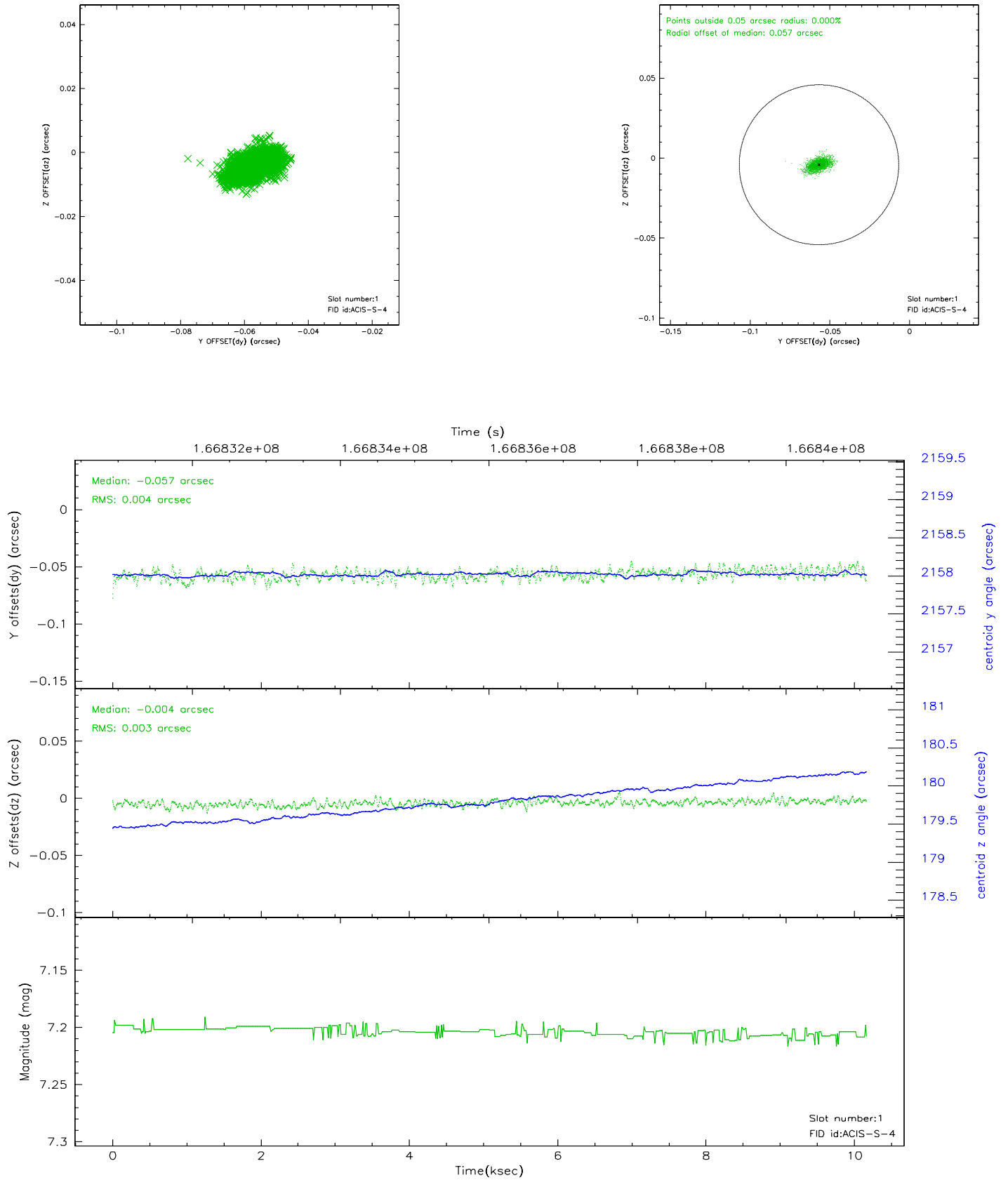


## 2.5 FID Slots

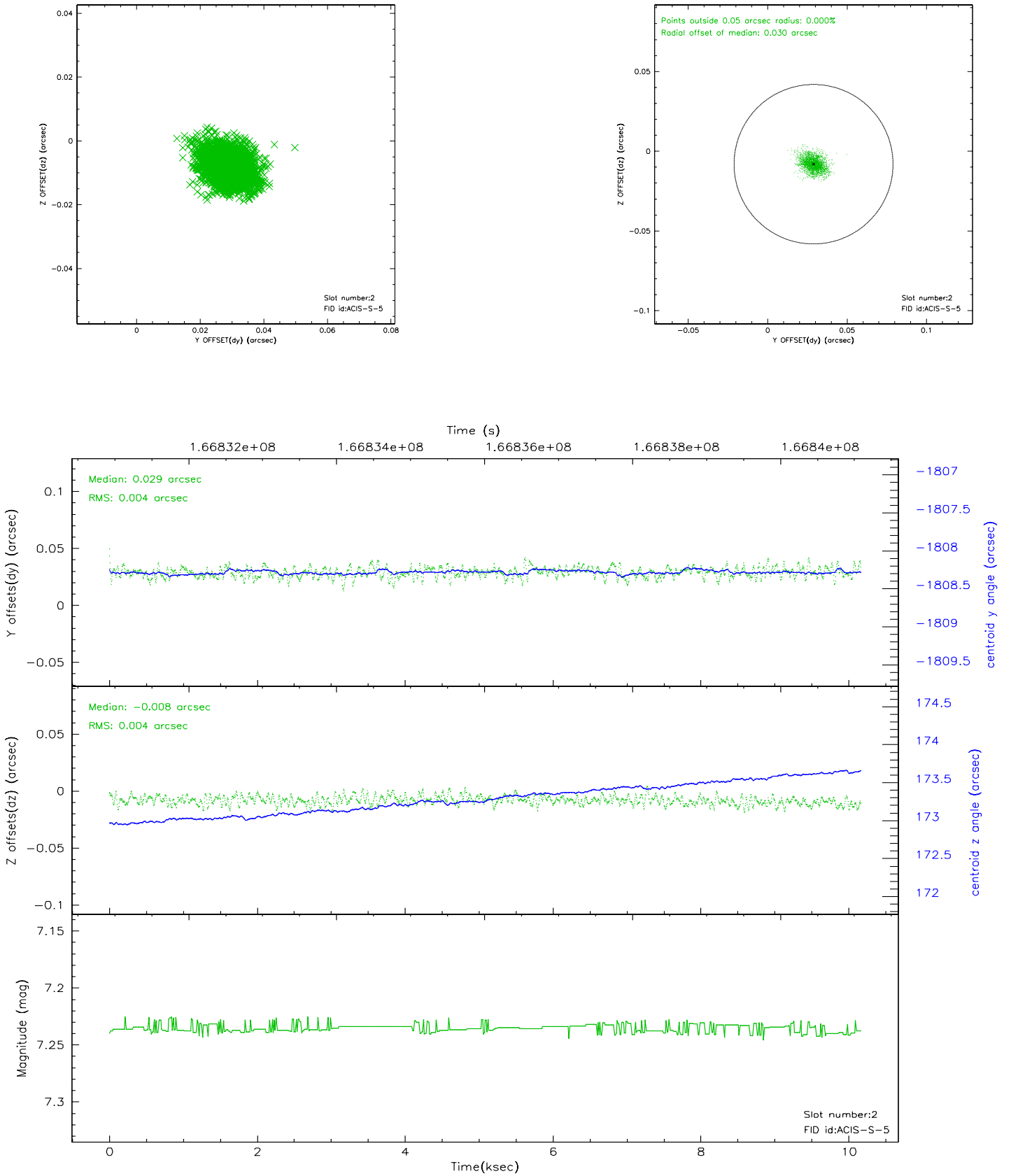
### 2.5.1 Slot 0



## 2.5.2 Slot 1

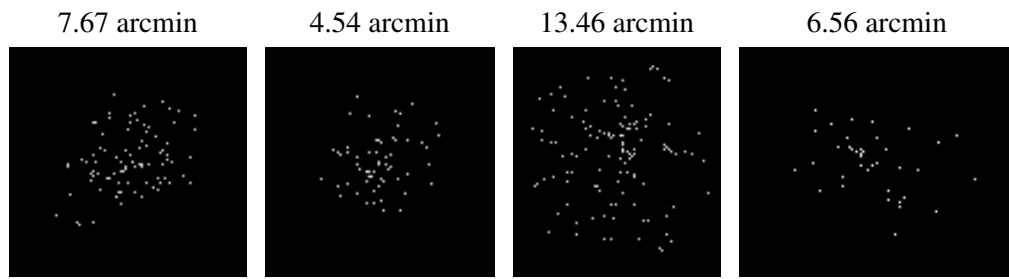


### 2.5.3 Slot 2





### 3 Point Sources



## A Summary

### A.1 Status

V&V Scientist	Beth Sundheim
V&V Date (YYYY-MM-DD)	2006.08.04
V&V Edition	1
V&V Disposition and Status	OK
V&V Charge Time	10.161

### A.2 Comments