

V&V Reference Report

L2 ASCDS Version : 7.6.8.1

Observation 3910 - L2 Version 001
Chandra X-Ray Center

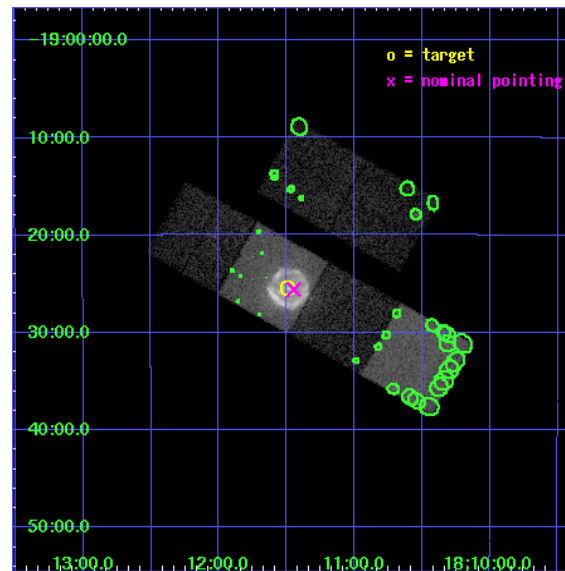
L2 Processing Date : Aug 10 2006

Contents

1	Front	2
2	OBI	3
2.1	OBI	3
2.1.1	Images	3
2.1.2	Bias	3
2.1.3	Parameters	4
2.1.4	Events	4
2.2	Compared Parameters	5
2.3	Aspect	6
2.4	Star Slots	9
2.4.1	Slot 3	9
2.4.2	Slot 4	10
2.4.3	Slot 5	11
2.4.4	Slot 6	12
2.4.5	Slot 7	13
2.5	FID Slots	14
2.5.1	Slot 0	14
2.5.2	Slot 1	15
2.5.3	Slot 2	16
3	Point Sources	17
A	Summary	18
A.1	Status	18
A.2	Comments	18

1 Front

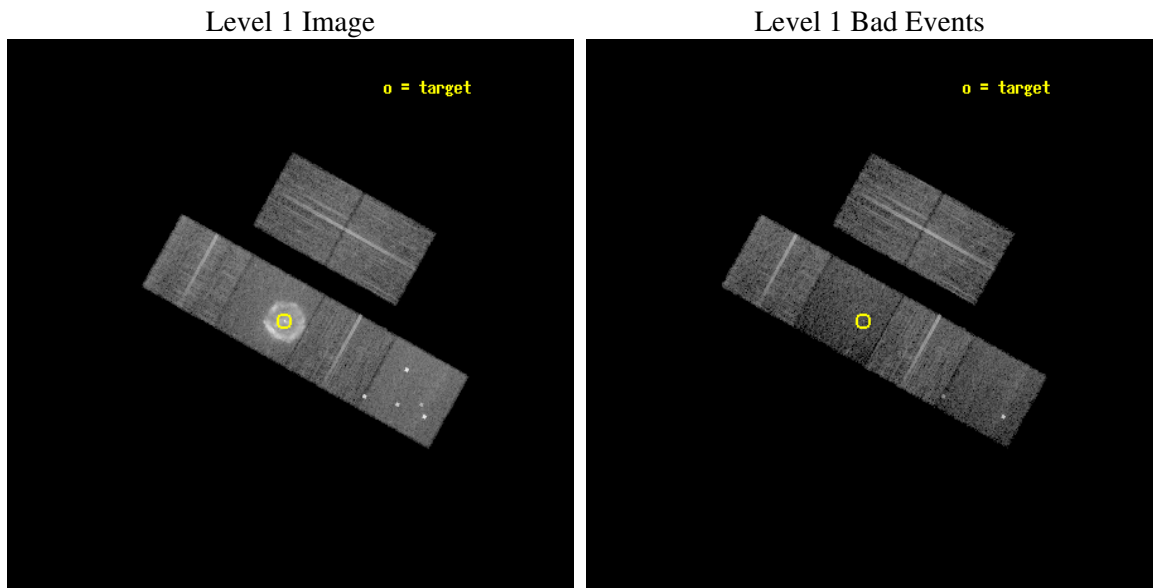
seq_num	500389
obs_id	3910
title	THE DYNAMICS OF THE PULSAR WIND NEBULA IN G11.2-0.3
observer	Dr. Mallory Roberts
object	G11.2-0.3
dtcycle	0
cycle	P
ra_targ	272.8725
dec_targ	-19.423611
ra_nom	272.86167076438
dec_nom	-19.42655951382
roll_nom	209.14368958702
revision	2
ontime	13961.599947989
livetime	13784.809762781
ontime2	13961.599947989
ontime3	13958.35906741
ontime5	13961.599947989
ontime6	13961.599947989
ontime7	13961.599947989
ontime8	13958.358977735
l2events	169403



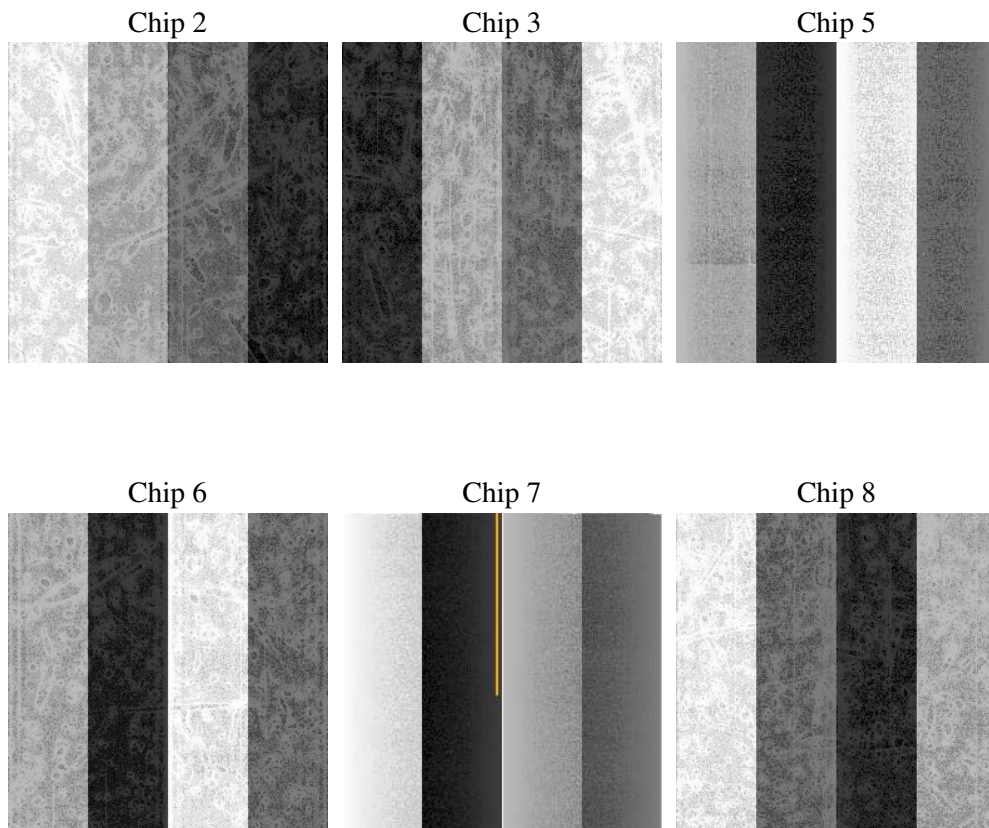
2 OBI

2.1 OBI

2.1.1 Images



2.1.2 Bias



2.1.3 Parameters

obi_num	1
ascdsver	7.6.8.1
caldsver	3.2.2
date	2006-08-10T04:04:09
revision	2

sched_exp_time	14000.000000
ontime	13965.49465403
ontime2	13965.49465403
ontime3	13962.253773451
ontime5	13965.49465403
ontime6	13965.49465403
ontime7	13965.49465403
ontime8	13962.253683776
l1events	504311

2.1.4 Events

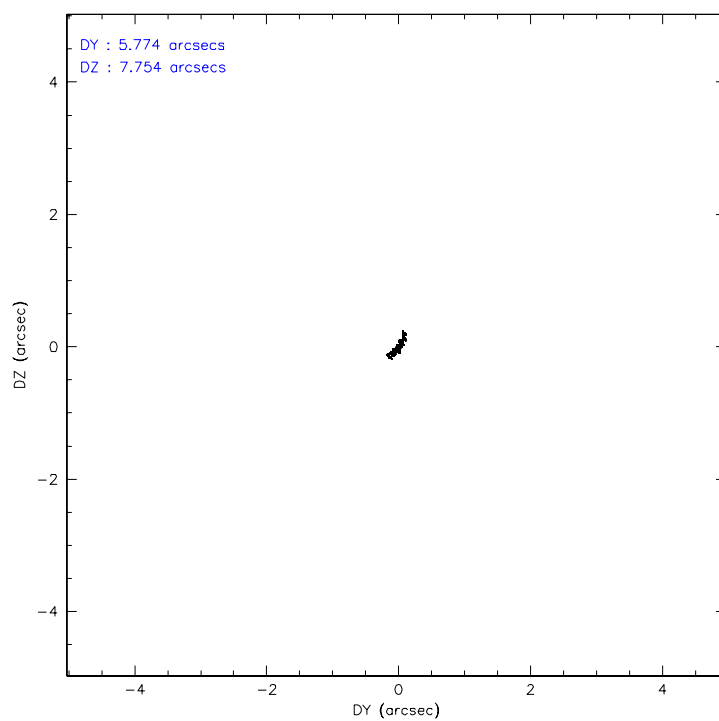
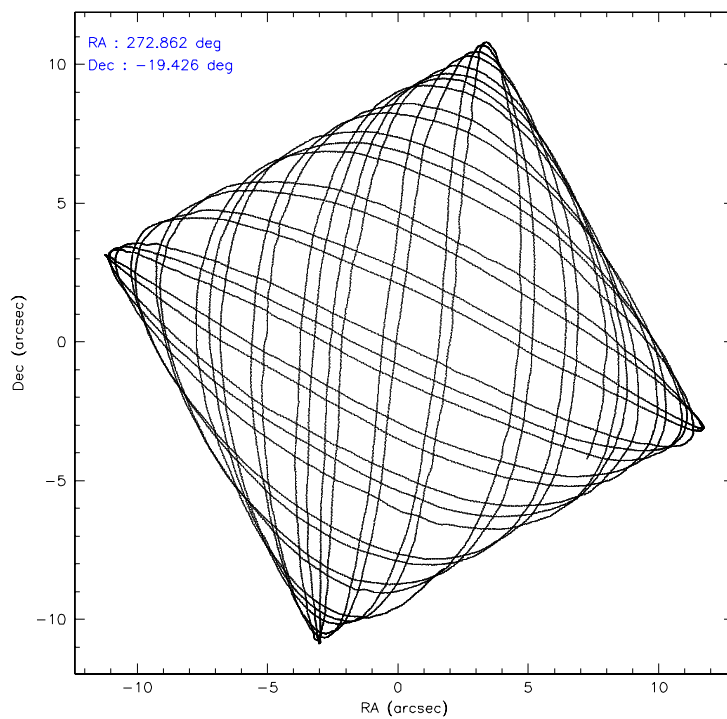
	ccd 2	ccd 3	ccd 5	ccd 6	ccd 7	ccd 8
level 1 events	68456	64775	88064	67259	137206	78551
rejected events	60327	57223	39094	57215	33470	59326
rejected %	88%	88%	44%	85%	24%	75%

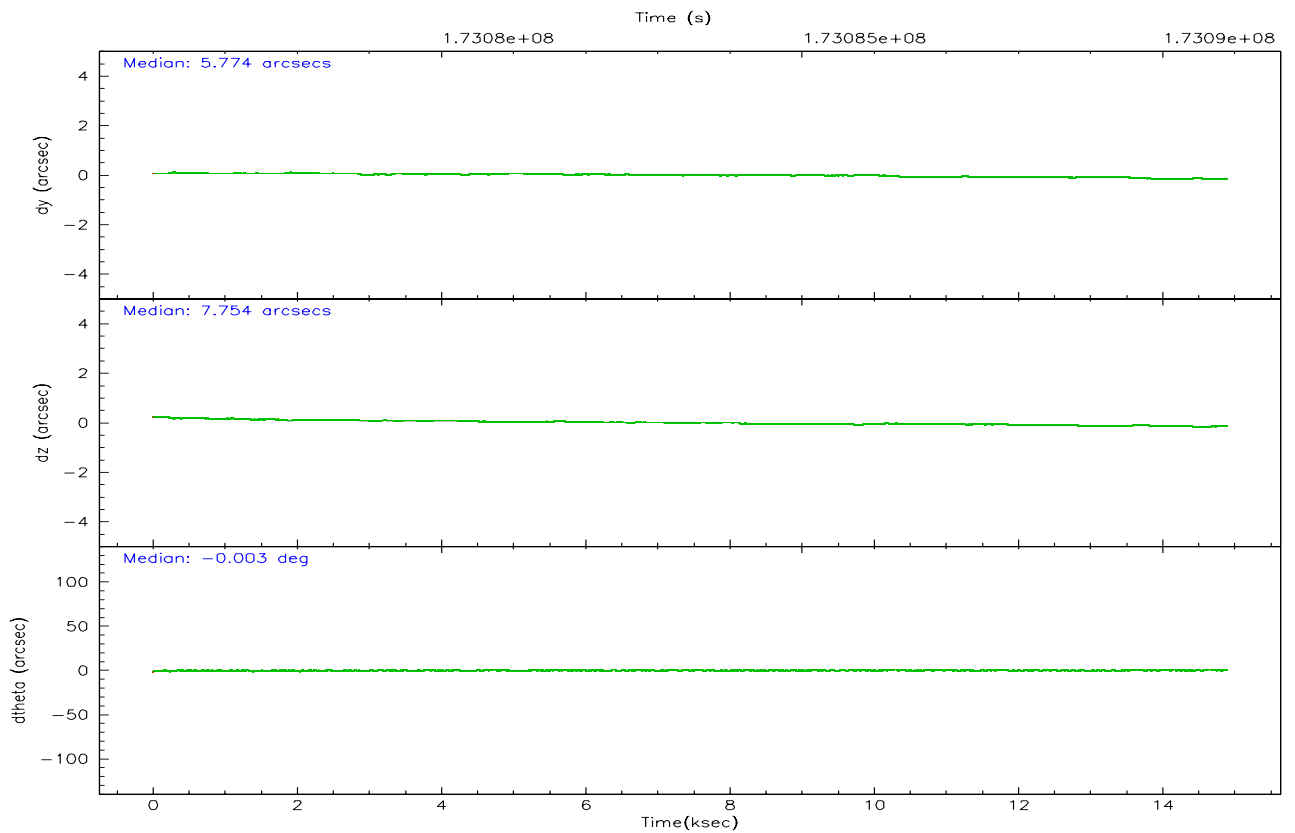
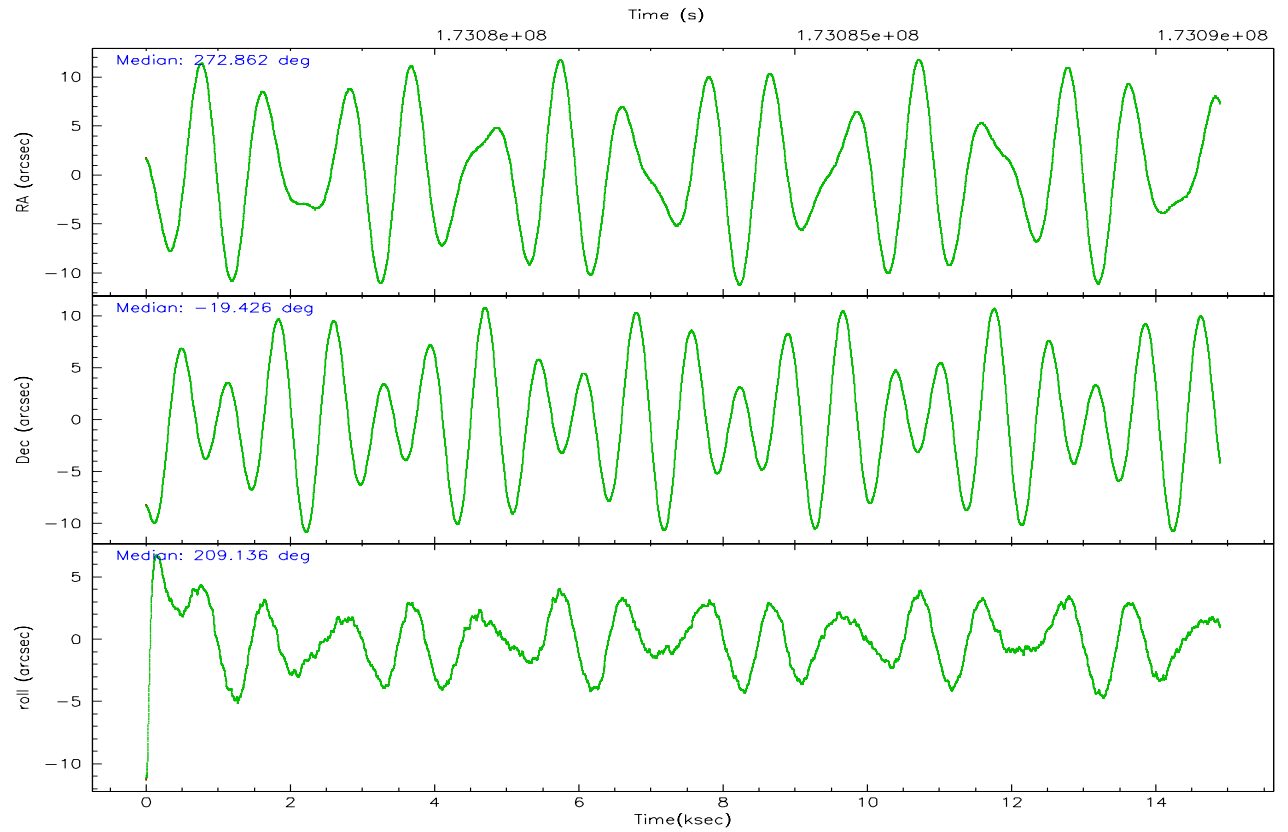
	ccd 2	ccd 3	ccd 5	ccd 6	ccd 7	ccd 8
grade 0 events	3862	3661	9794	5379	19172	6202
	5%	5%	11%	7%	13%	7%
grade 1 events	35	47	216	38	61	63
	0%	0%	0%	0%	0%	0%
grade 2 events	1629	1373	15083	1709	28870	4077
	2%	2%	17%	2%	21%	5%
grade 3 events	757	678	1272	811	10334	2074
	1%	1%	1%	1%	7%	2%
grade 4 events	763	698	1154	780	9860	1962
	1%	1%	1%	1%	7%	2%
grade 5 events	1779	2060	4710	2077	5365	3187
	2%	3%	5%	3%	3%	4%
grade 6 events	1120	1146	21685	1369	35549	4913
	1%	1%	24%	2%	25%	6%
grade 7 events	58511	55112	34150	55096	27995	56073
	85%	85%	38%	81%	20%	71%

2.2 Compared Parameters

Parameter	Planned	Actual	Parameter	Planned	Actual
Instrument	ACIS	ACIS	Obspar format version number	6	6
Detector	ACIS-235678	ACIS-235678	Obspar file type	PREDICTED	ACTUAL
Grating	NONE	NONE	Obspar update status	NONE	UPDATED
Data mode	VFAINT	VFAINT	On-chip summing requested	N	N
Observation mode	POINTING	POINTING	Subarray requested	NONE	NONE
Pointing RA	272.876122	272.8616707643773	Alternating exposures requested	N	N
Pointing Dec	-19.402996	-19.42655951381968	Primary exposure time	0.000000	3.2
Pointing Roll	208.991873	209.143689587018			
SIM focus pos (mm)	-0.684267	-0.6828225247311905			
SIM defocus (mm)	0	0.001444936568705701			
SIM translation stage pos (mm)	-190.132523	-190.1425803651734			
SIM translation stage offset (mm)	0	0.01005778216563158			
Observation start time	173076896.184000	173075578.87537			
Observation start date	2003-06-27T04:53:52	2003-06-27T04:32:58			
Observation end time	173090896.184000	173091515.57605			
Observation end date	2003-06-27T08:47:12	2003-06-27T08:58:35			
Read mode	TIMED	TIMED			

2.3 Aspect



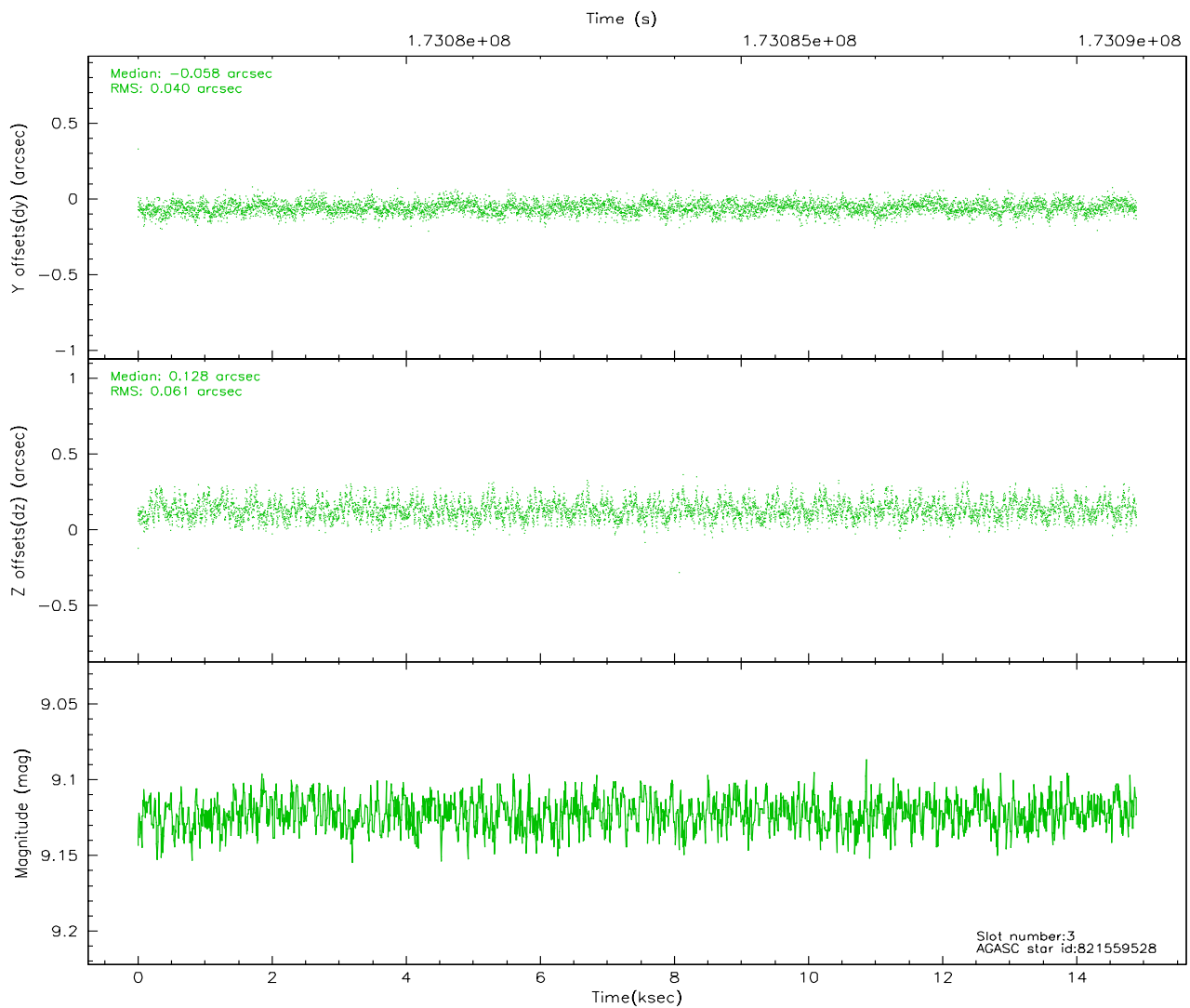
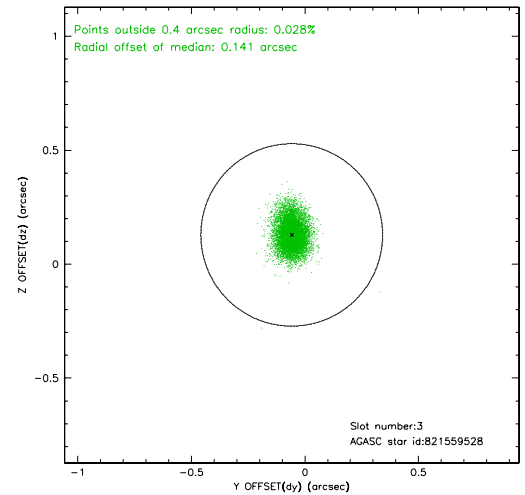
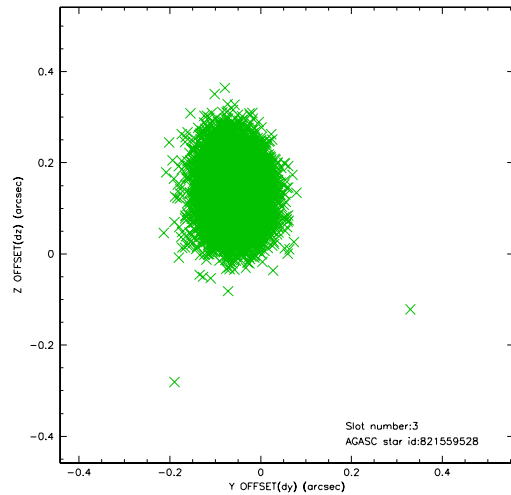


Slot Statistics

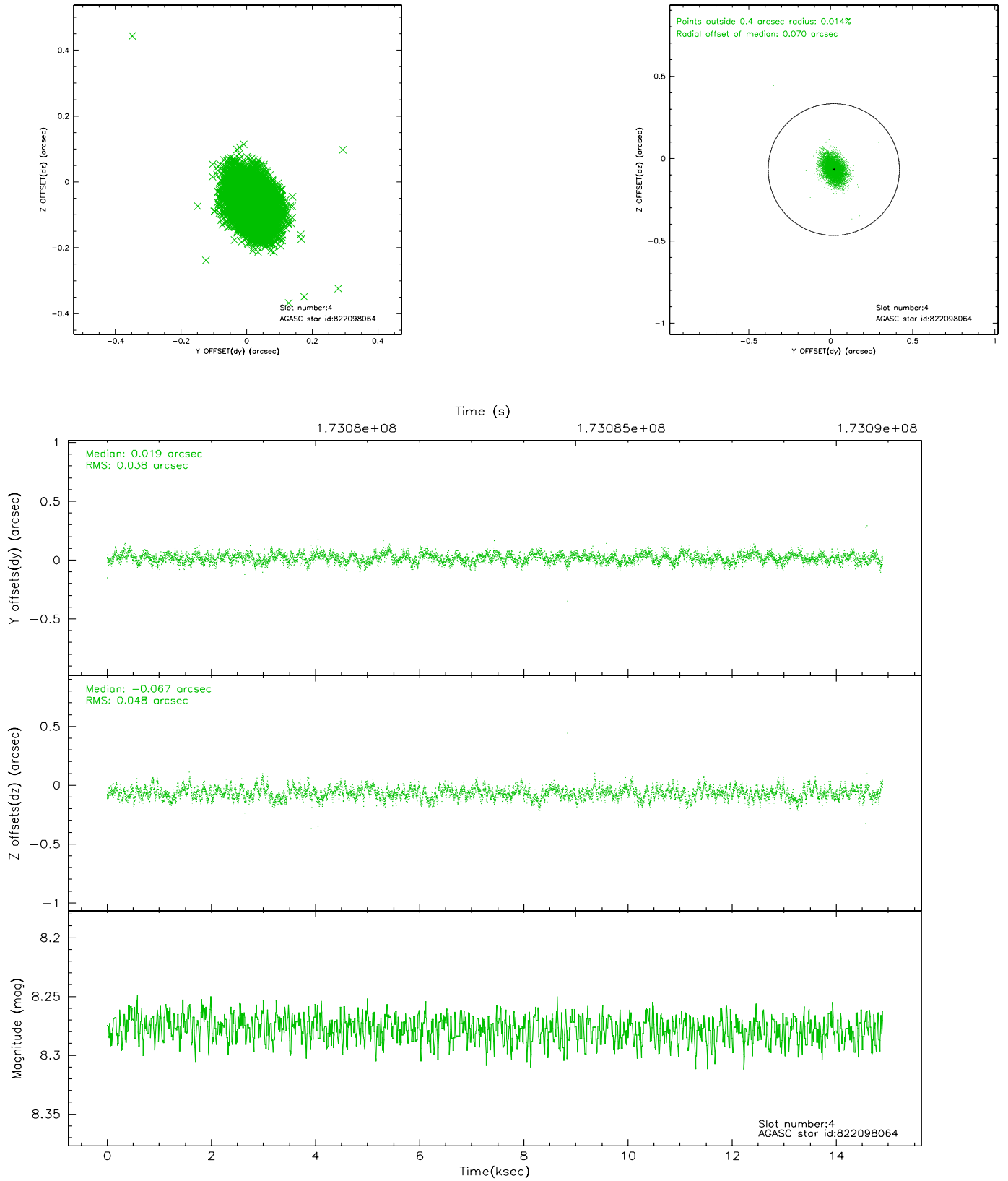
slot	status	id	mag	n_pts	med_dy	med_dz	dr1	dr2	ra	dec	mean_y	mean_z
0	FID	ACIS-S-1	7.18	3634	0.031	-0.018	0.006	0.011	0.000000	0.000000	937.51	-1724.58
1	FID	ACIS-S-5	7.23	3634	-0.049	0.030	0.006	0.010	0.000000	0.000000	-1811.31	172.83
2	FID	ACIS-S-6	7.36	3634	-0.004	-0.001	0.007	0.013	0.000000	0.000000	402.81	817.01
3	GUIDE	821559528	9.12	7264	-0.058	0.128	0.077	0.128	272.980625	-18.673858	-1583.49	-2123.03
4	GUIDE	822098064	8.28	7267	0.019	-0.067	0.064	0.104	273.233974	-19.745214	-462.99	1666.21
5	GUIDE	822100944	9.65	7263	-0.005	-0.102	0.111	0.178	273.673430	-19.715066	-1816.07	2297.98
6	GUIDE	822090352	8.63	7267	0.011	-0.028	0.082	0.138	272.203907	-18.976234	1259.64	-2448.49
7	GUIDE	822102528	9.31	7263	0.032	0.065	0.083	0.133	272.446853	-20.048949	2398.16	1332.31

2.4 Star Slots

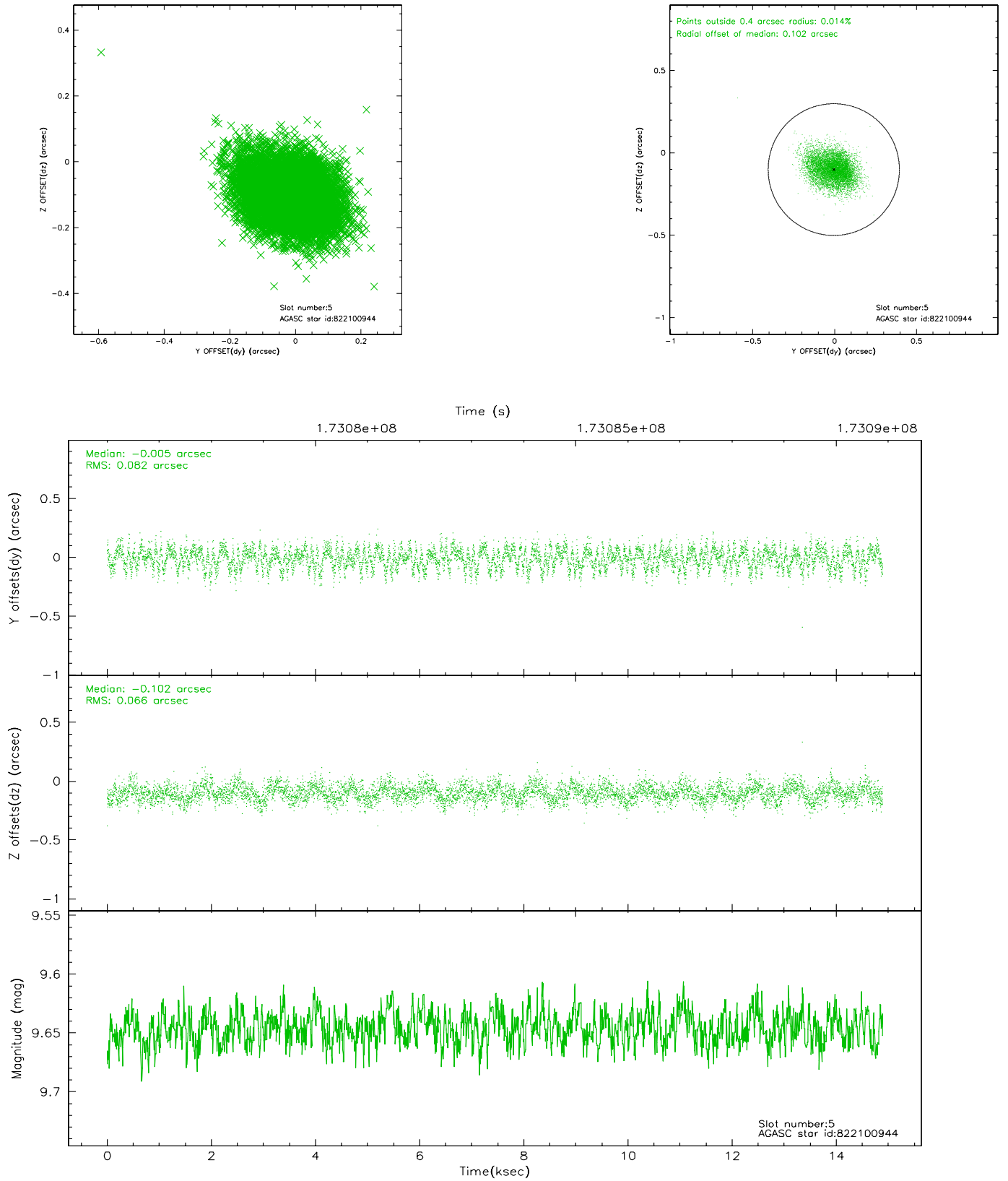
2.4.1 Slot 3



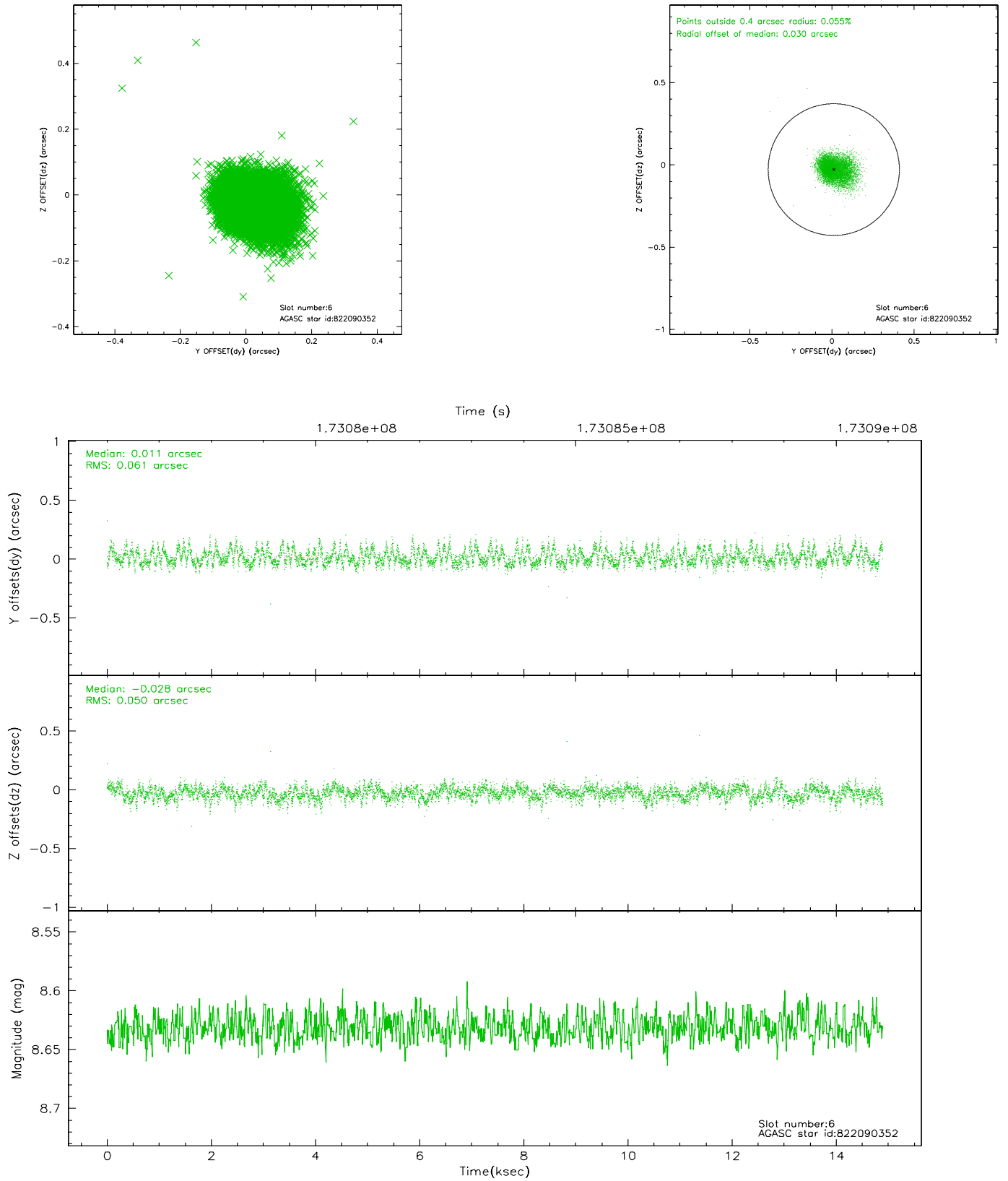
2.4.2 Slot 4



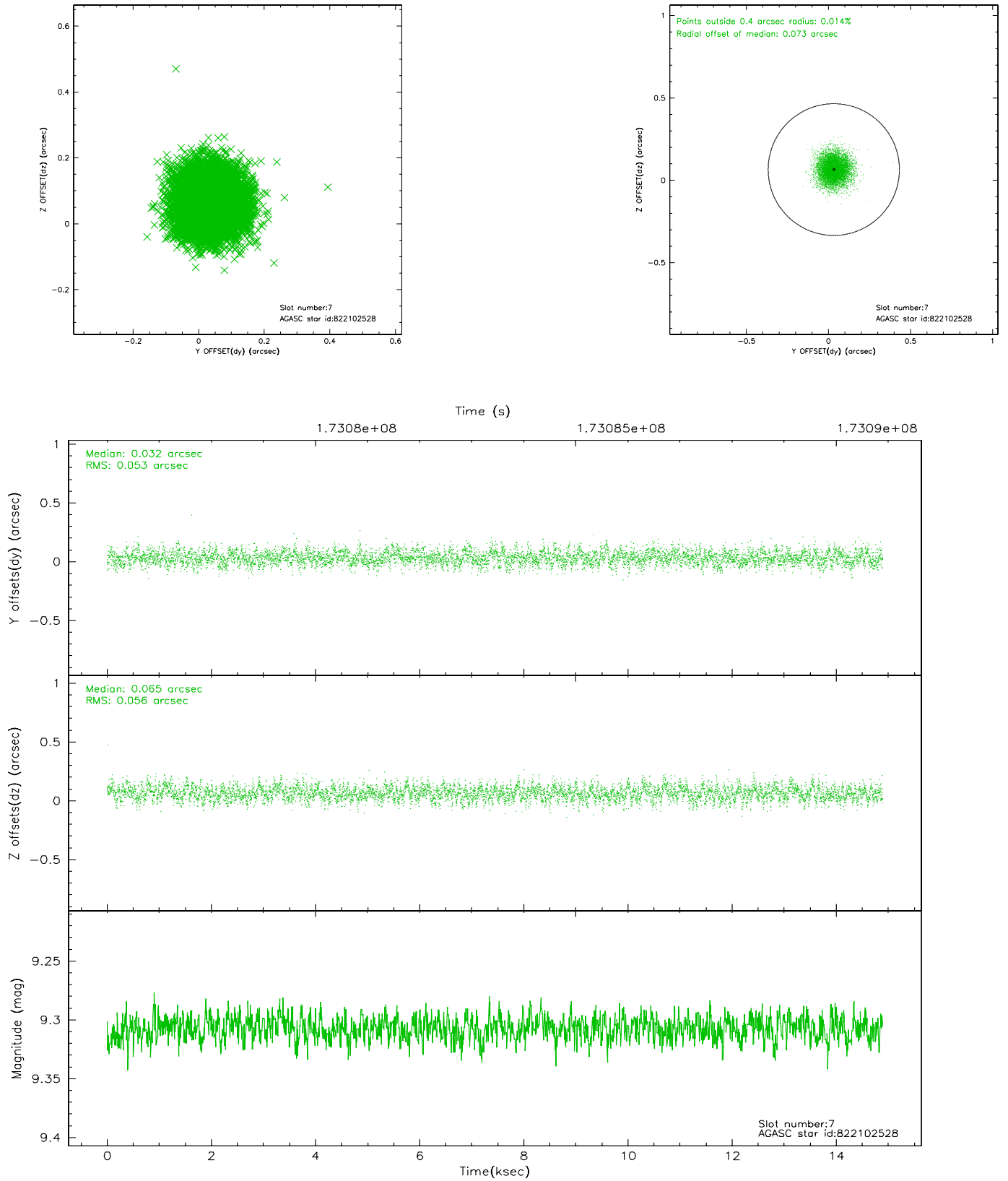
2.4.3 Slot 5



2.4.4 Slot 6

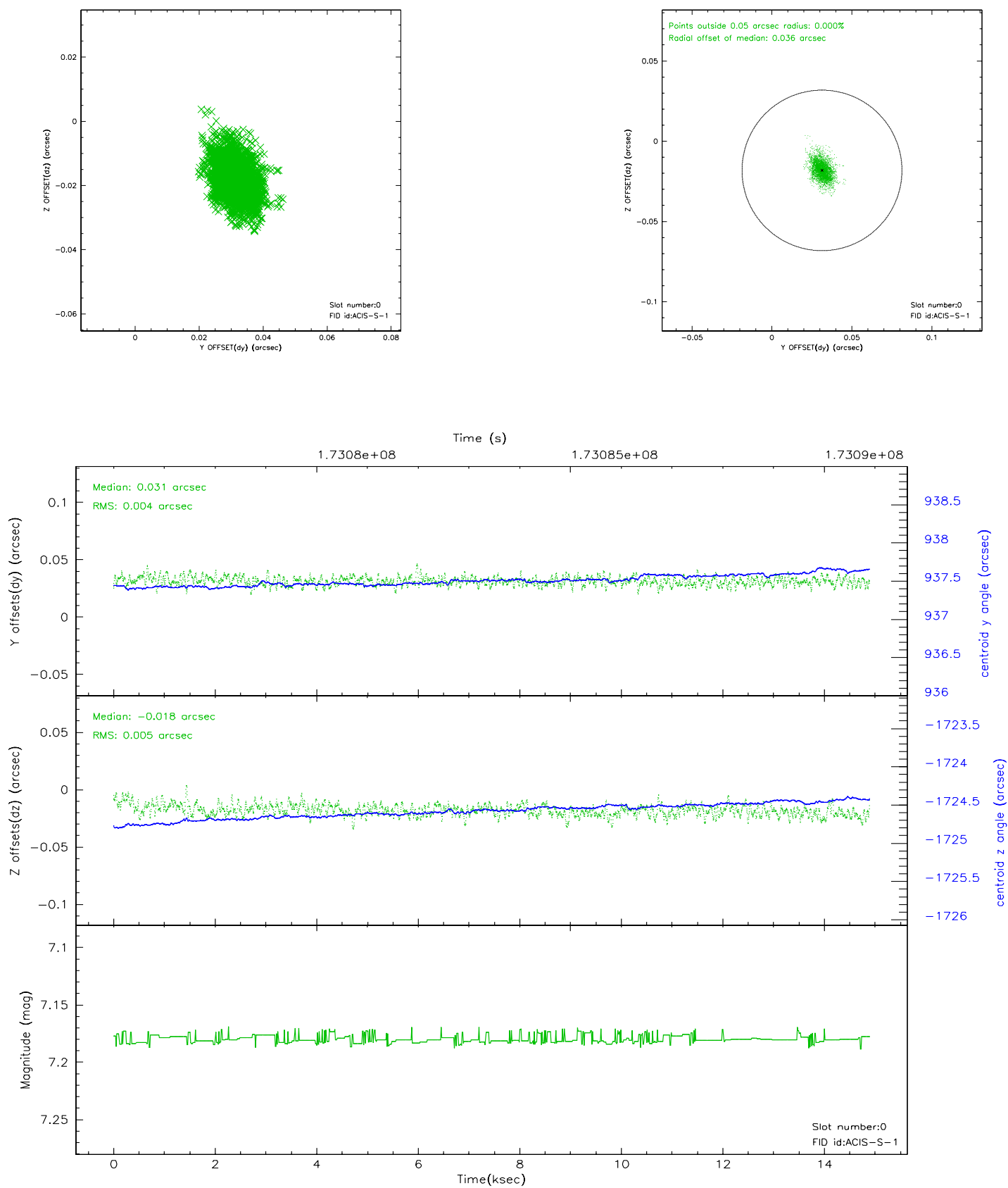


2.4.5 Slot 7

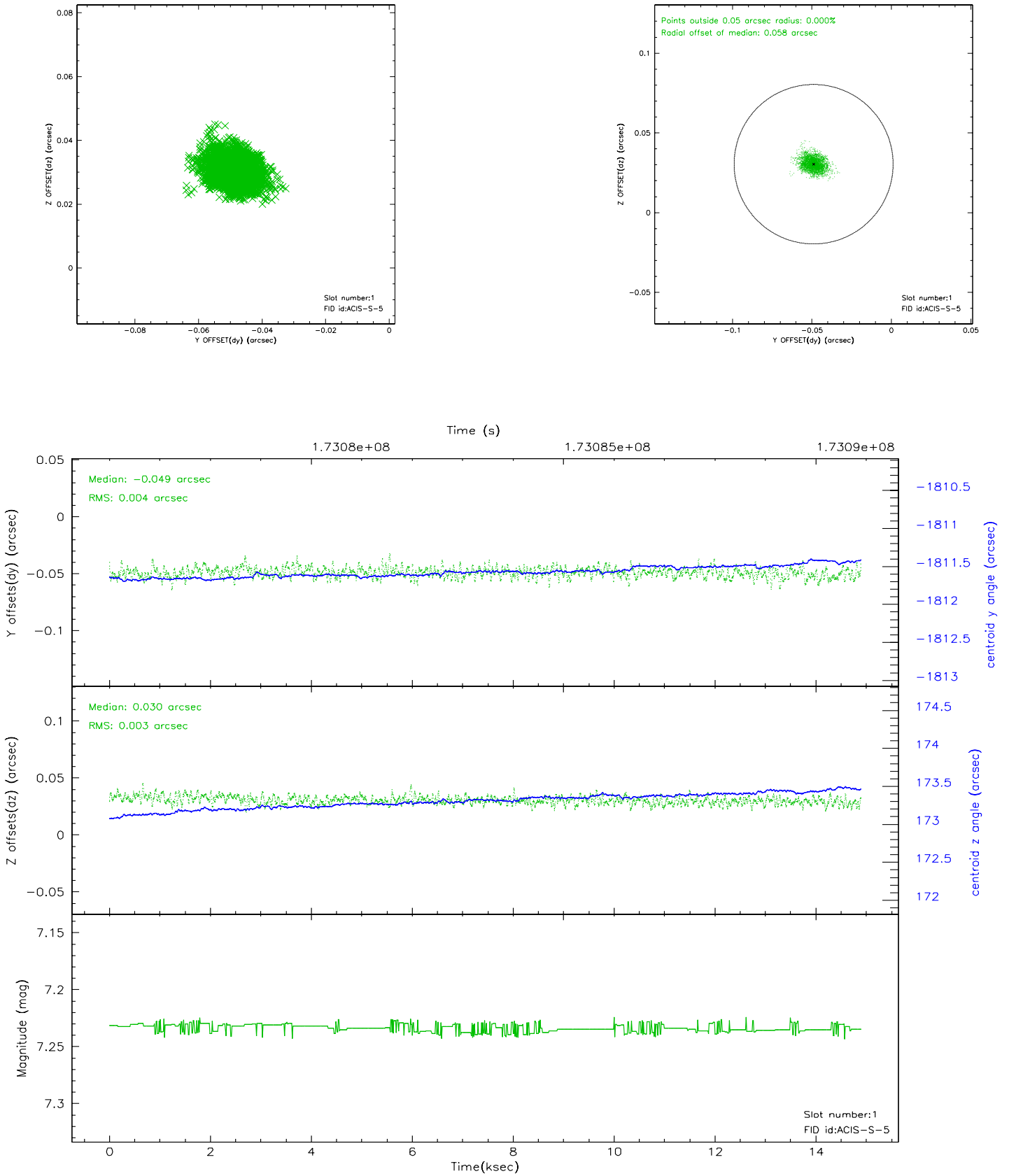


2.5 FID Slots

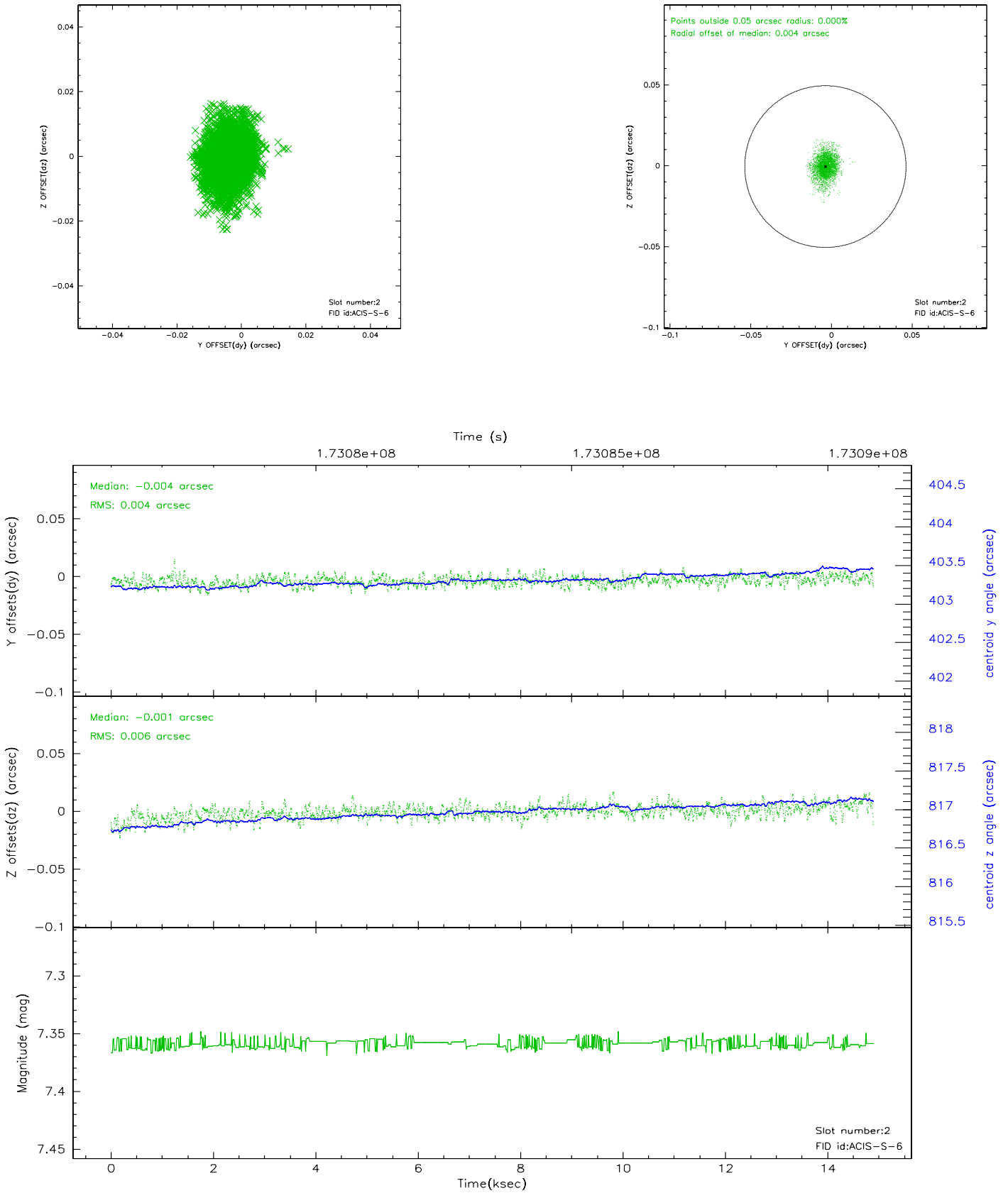
2.5.1 Slot 0



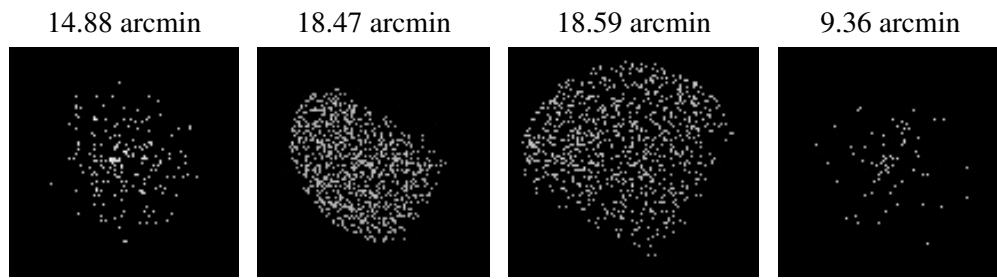
2.5.2 Slot 1



2.5.3 Slot 2



3 Point Sources



A Summary

A.1 Status

V&V Scientist	Jen Lauer
V&V Date (YYYY-MM-DD)	2006.08.10
V&V Edition	1
V&V Disposition and Status	OK
V&V Charge Time	13.964

A.2 Comments

Monitor constraint met.