

V&V Reference Report

L2 ASCDS Version : 7.6.8

Observation 3870 - L2 Version 001
Chandra X-Ray Center

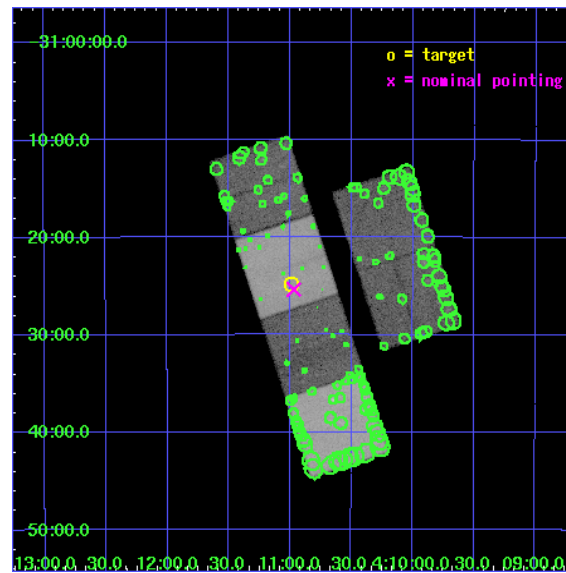
L2 Processing Date : Jul 25 2006

Contents

1	Front	2
2	OBI	3
2.1	OBI	3
2.1.1	Images	3
2.1.2	Bias	3
2.1.3	Parameters	4
2.1.4	Events	4
2.2	Compared Parameters	5
2.3	Aspect	6
2.4	Star Slots	9
2.4.1	Slot 3	9
2.4.2	Slot 4	10
2.4.3	Slot 5	11
2.4.4	Slot 6	12
2.4.5	Slot 7	13
2.5	FID Slots	14
2.5.1	Slot 0	14
2.5.2	Slot 1	15
2.5.3	Slot 2	16
3	Point Sources	17
A	Summary	18
A.1	Status	18
A.2	Comments	18

1 Front

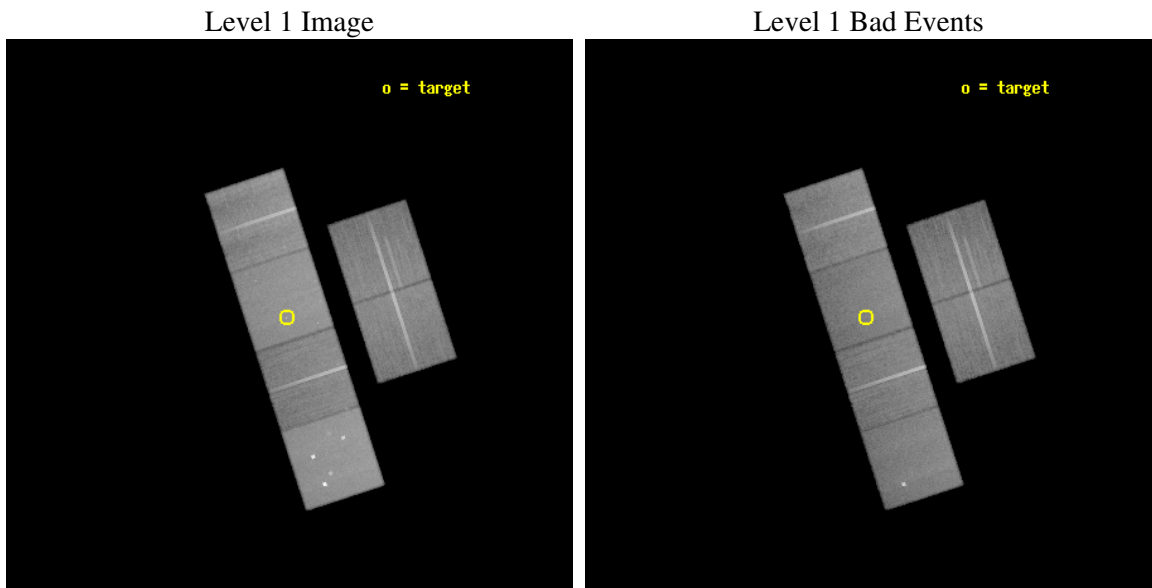
seq_num	500349
obs_id	3870
title	PROMPT CHANDRA OBSERVATIONS OF NEARBY SUPERNOVAE
observer	Prof. Walter Lewin
object	SN 2003BG
dtcycle	0
cycle	P
ra_targ	62.7475
dec_targ	-31.413972
ra_nom	62.742156953594
dec_nom	-31.42248448479
roll_nom	251.96876904769
revision	2
ontime	51119.958849251
livetime	50472.647149558
ontime2	51097.272107303
ontime3	51097.272007734
ontime5	51119.958849251
ontime6	51106.994968265
ontime7	51119.958849251
ontime8	51097.272097319
l2events	520532



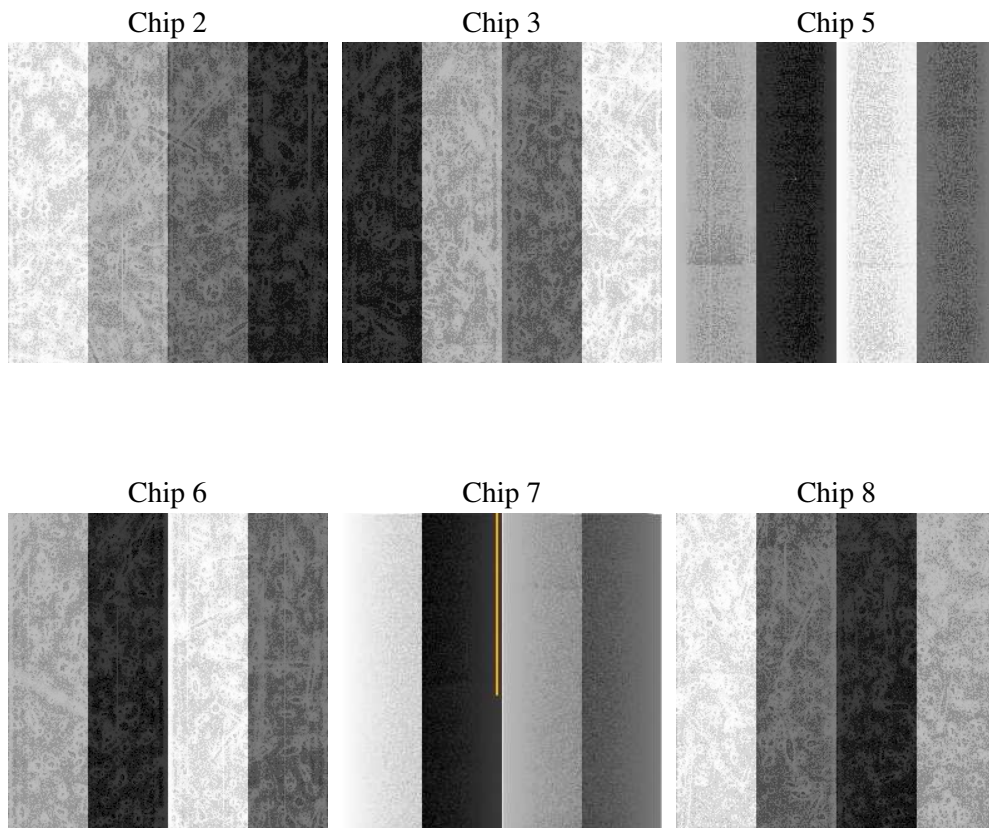
2 OBI

2.1 OBI

2.1.1 Images



2.1.2 Bias



2.1.3 Parameters

obi_num	0
ascdsver	7.6.8
caldsver	3.2.2
date	2006-07-25T22:11:50
revision	2

sched_exp_time	50962.310000
ontime	51522.180891305
ontime2	51499.494149357
ontime3	51499.494049788
ontime5	51522.180891305
ontime6	51509.217010319
ontime7	51522.180891305
ontime8	51499.494139373
l1events	2379952

2.1.4 Events

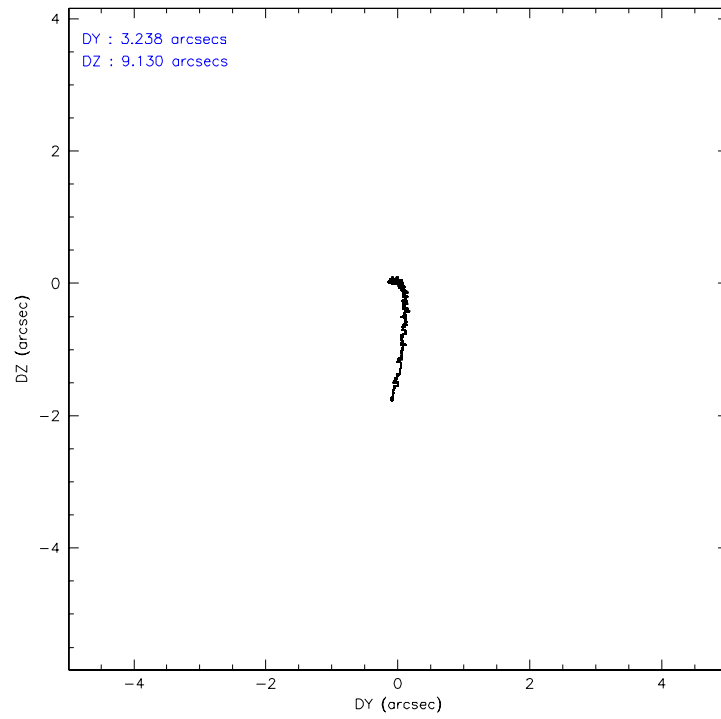
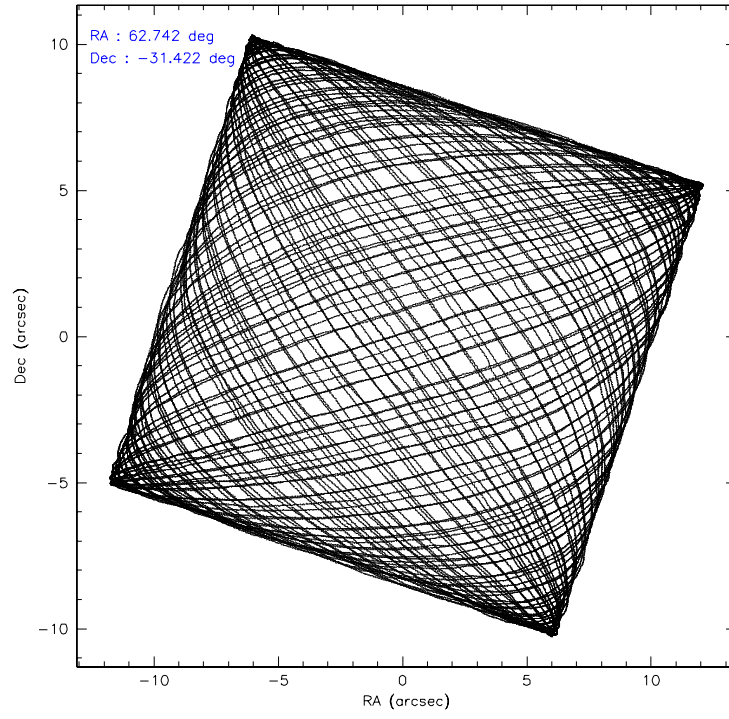
	ccd 2	ccd 3	ccd 5	ccd 6	ccd 7	ccd 8
level 1 events	339483	321067	511420	336364	450210	421408
rejected events	299550	283264	278881	296658	274870	334586
rejected %	88%	88%	54%	88%	61%	79%

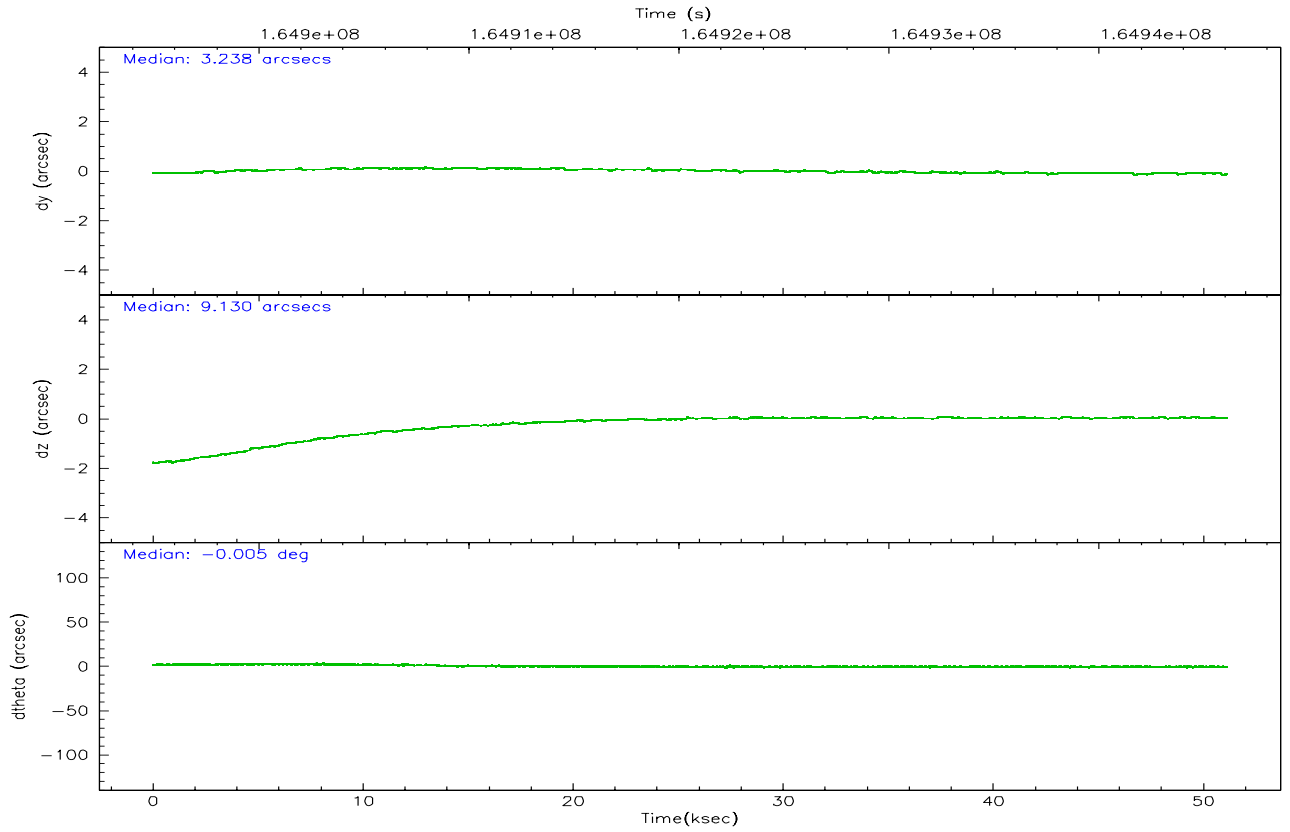
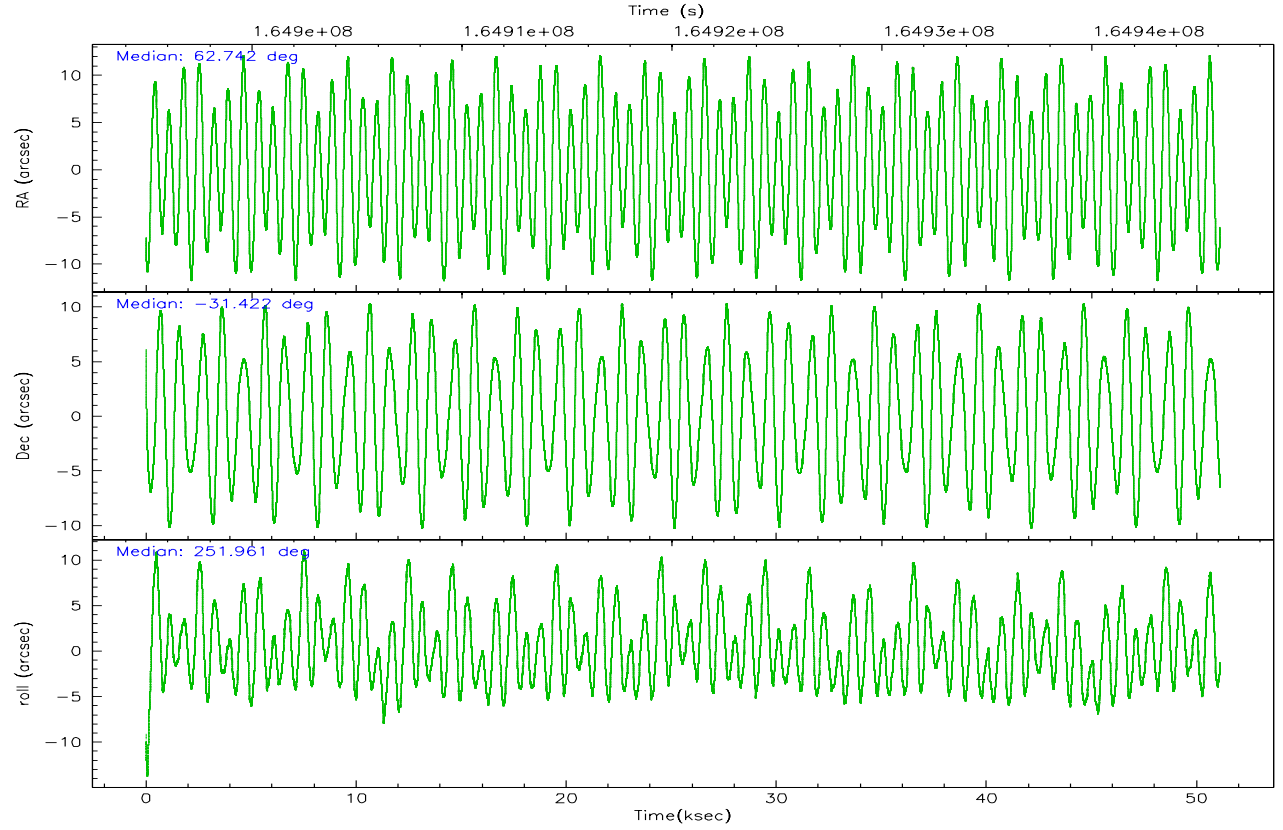
	ccd 2	ccd 3	ccd 5	ccd 6	ccd 7	ccd 8
grade 0 events	18234	16824	27390	16336	11284	27898
	5%	5%	5%	4%	2%	6%
grade 1 events	231	193	390	136	272	288
	0%	0%	0%	0%	0%	0%
grade 2 events	7991	7175	70683	8034	43235	19006
	2%	2%	13%	2%	9%	4%
grade 3 events	3764	3830	5561	3926	9050	9096
	1%	1%	1%	1%	2%	2%
grade 4 events	3573	3849	4836	3853	8804	8533
	1%	1%	0%	1%	1%	2%
grade 5 events	12790	13882	24047	14857	29088	19374
	3%	4%	4%	4%	6%	4%
grade 6 events	6642	6432	125883	7846	104293	22796
	1%	2%	24%	2%	23%	5%
grade 7 events	286258	268882	252630	281376	244184	314417
	84%	83%	49%	83%	54%	74%

2.2 Compared Parameters

Parameter	Planned	Actual	Parameter	Planned	Actual
Instrument	ACIS	ACIS	Obspar format version number	6	6
Detector	ACIS-235678	ACIS-235678	Obspar file type	PREDICTED	ACTUAL
Grating	NONE	NONE	Obspar update status	NONE	UPDATED
Data mode	FAINT	FAINT	On-chip summing requested	N	N
Observation mode	POINTING	POINTING	Subarray requested	NONE	NONE
Pointing RA	62.735121	62.74215695359359	Alternating exposures requested	N	N
Pointing Dec	-31.395941	-31.42248448479019	Primary exposure time	0.000000	3.2
Pointing Roll	251.808478	251.9687690476933			
SIM focus pos (mm)	-0.684267	-0.6828225247311905			
SIM defocus (mm)	0	0.001444936568705701			
SIM translation stage pos (mm)	-190.132523	-190.1425803651734			
SIM translation stage offset (mm)	0	0.01005778216563158			
Observation start time	164895130.184000	164893870.1665			
Observation start date	2003-03-24T12:11:06	2003-03-24T11:51:10			
Observation end time	164946092.184000	164946406.54372			
Observation end date	2003-03-25T02:20:28	2003-03-25T02:26:46			
Read mode	TIMED	TIMED			

2.3 Aspect



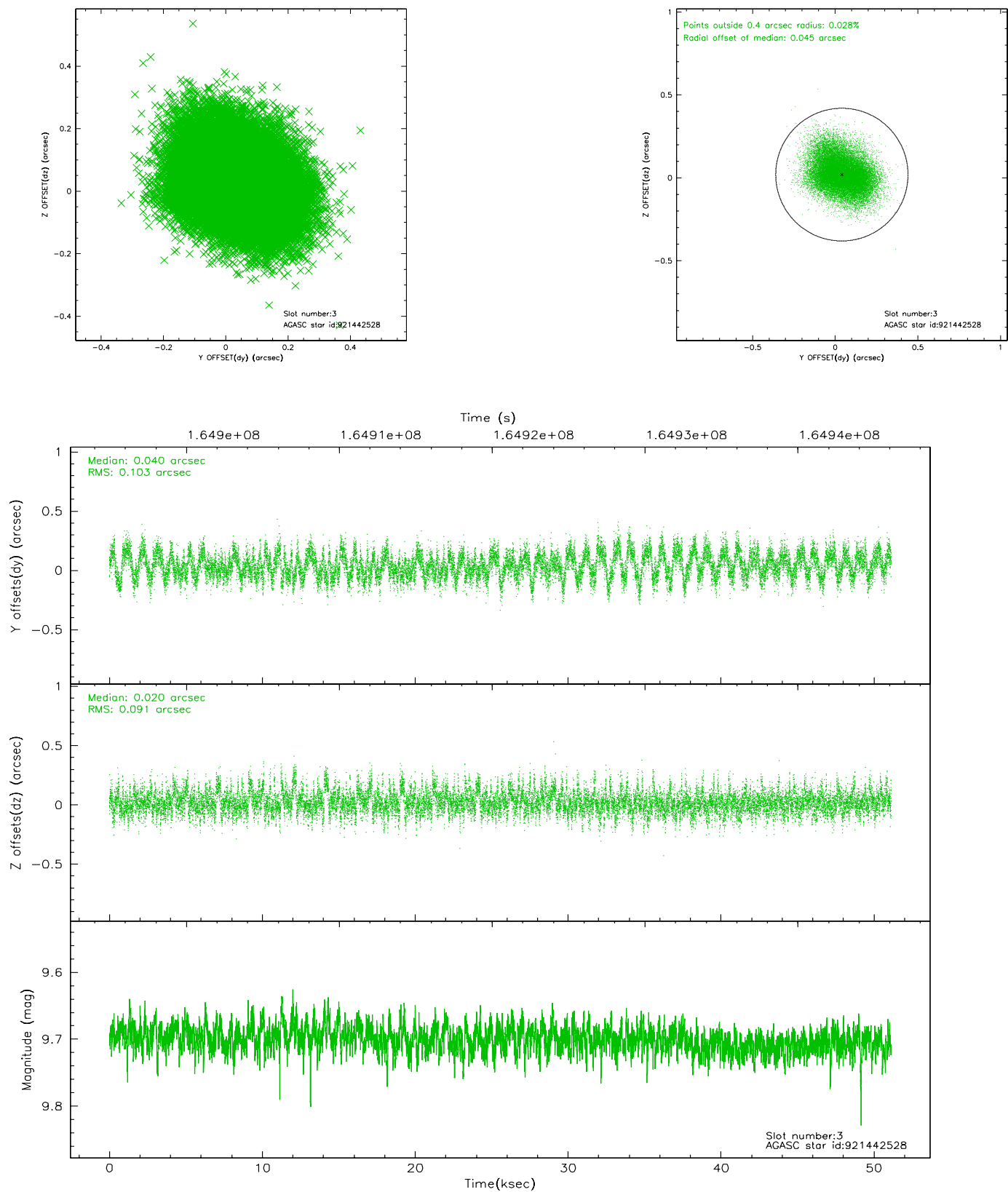


Slot Statistics

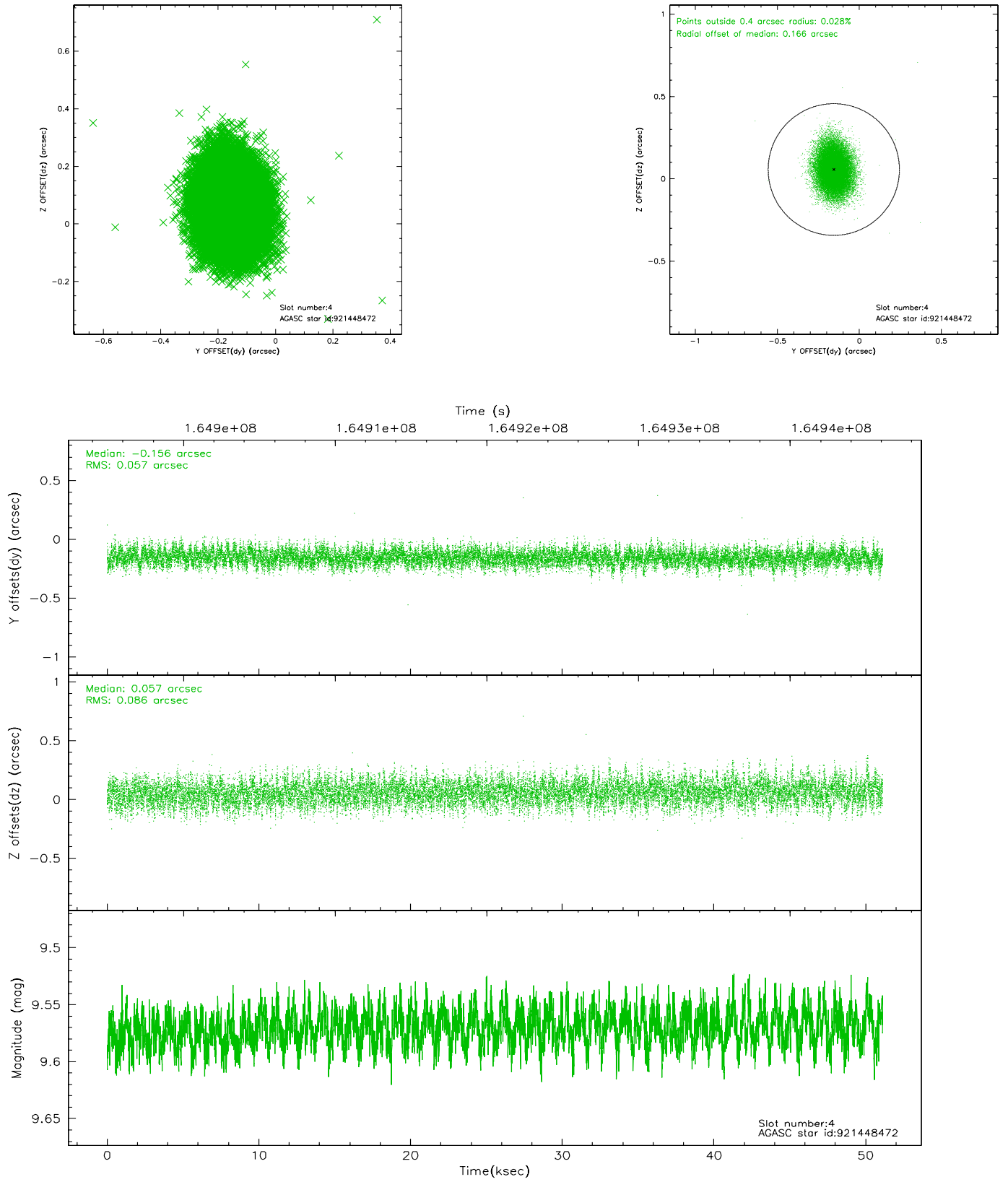
slot	status	id	mag	n_pts	med_dy	med_dz	dr1	dr2	ra	dec	mean_y	mean_z
0	FID	ACIS-S-2	7.11	12463	-0.021	0.004	0.010	0.020	0.000000	0.000000	-755.90	-1730.01
1	FID	ACIS-S-4	7.20	12459	-0.017	0.009	0.008	0.016	0.000000	0.000000	2157.37	178.52
2	FID	ACIS-S-5	7.24	12459	0.005	-0.004	0.010	0.016	0.000000	0.000000	-1808.76	172.12
3	GUIDE	921442528	9.70	24896	0.040	0.020	0.147	0.234	62.194584	-31.879140	2172.95	-1025.08
4	GUIDE	921448472	9.57	24920	-0.156	0.057	0.108	0.180	62.115628	-30.967011	-864.24	-2297.06
5	GUIDE	922363888	8.73	24919	0.009	0.067	0.096	0.151	63.308834	-31.283379	-931.45	1551.82
6	GUIDE	922365648	7.48	24925	-0.134	0.025	0.068	0.104	63.098764	-31.581103	287.11	1269.07
7	GUIDE	921438344	8.82	24920	0.238	-0.174	0.090	0.151	61.765936	-31.731167	2085.87	-2438.24

2.4 Star Slots

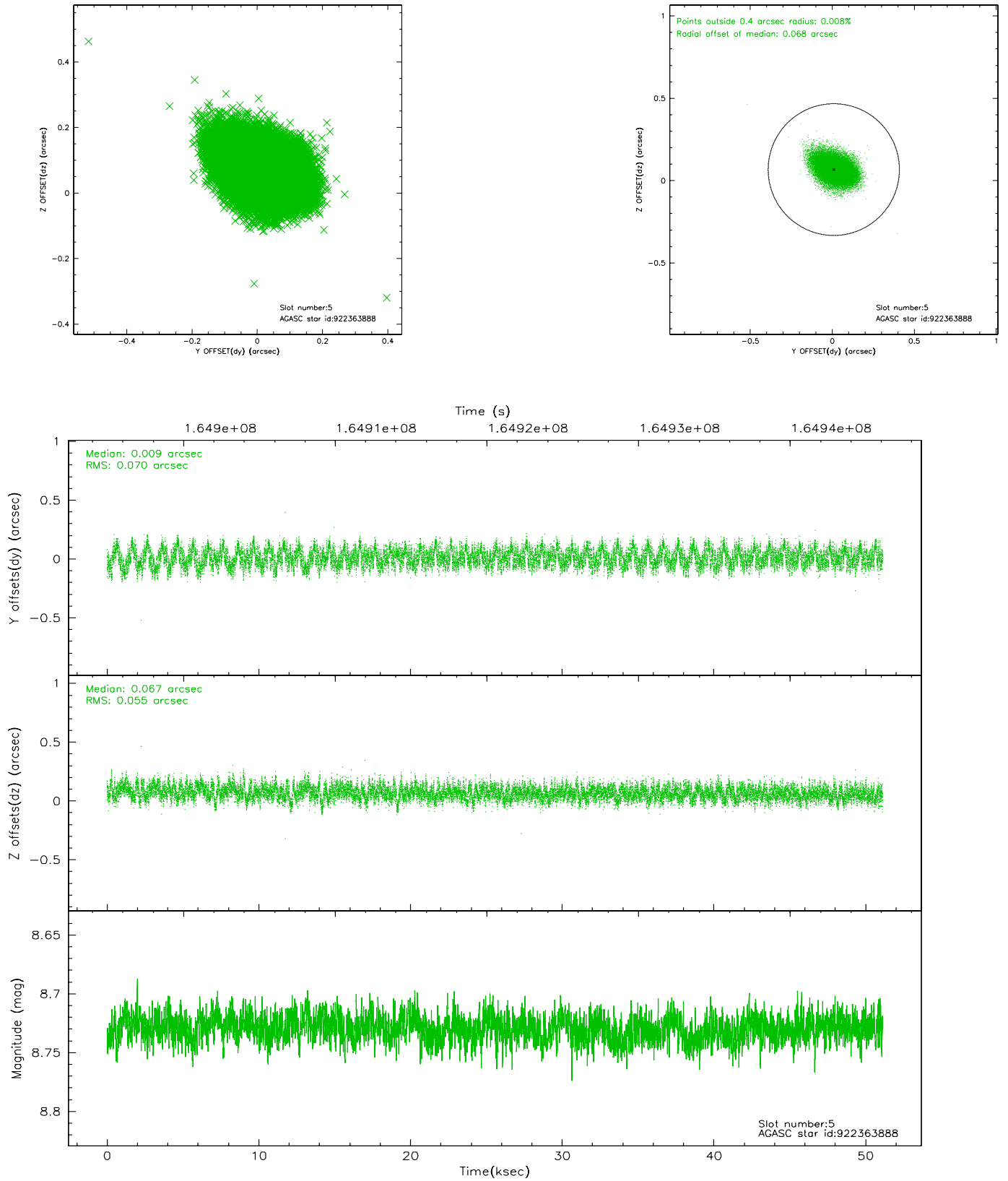
2.4.1 Slot 3



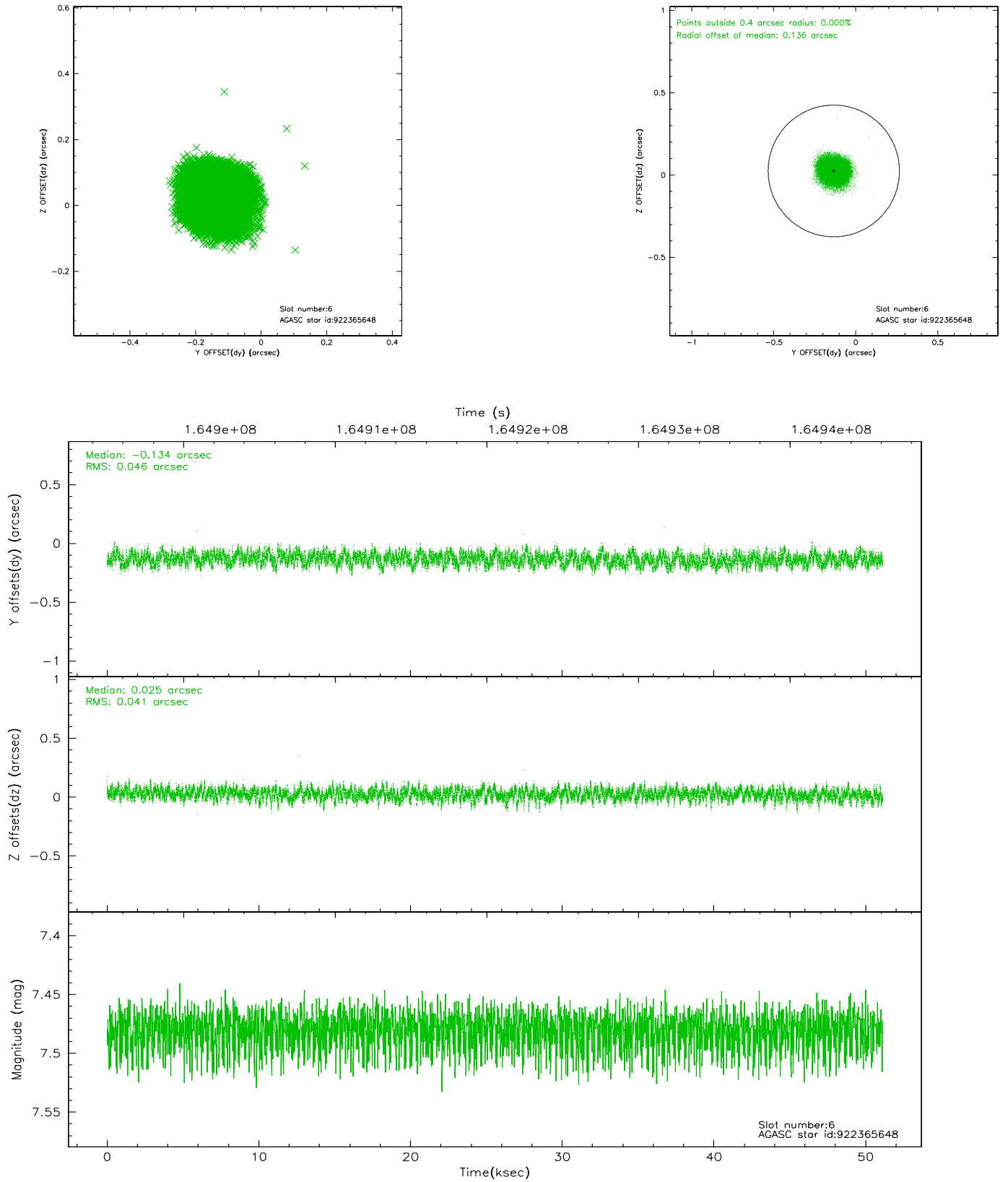
2.4.2 Slot 4



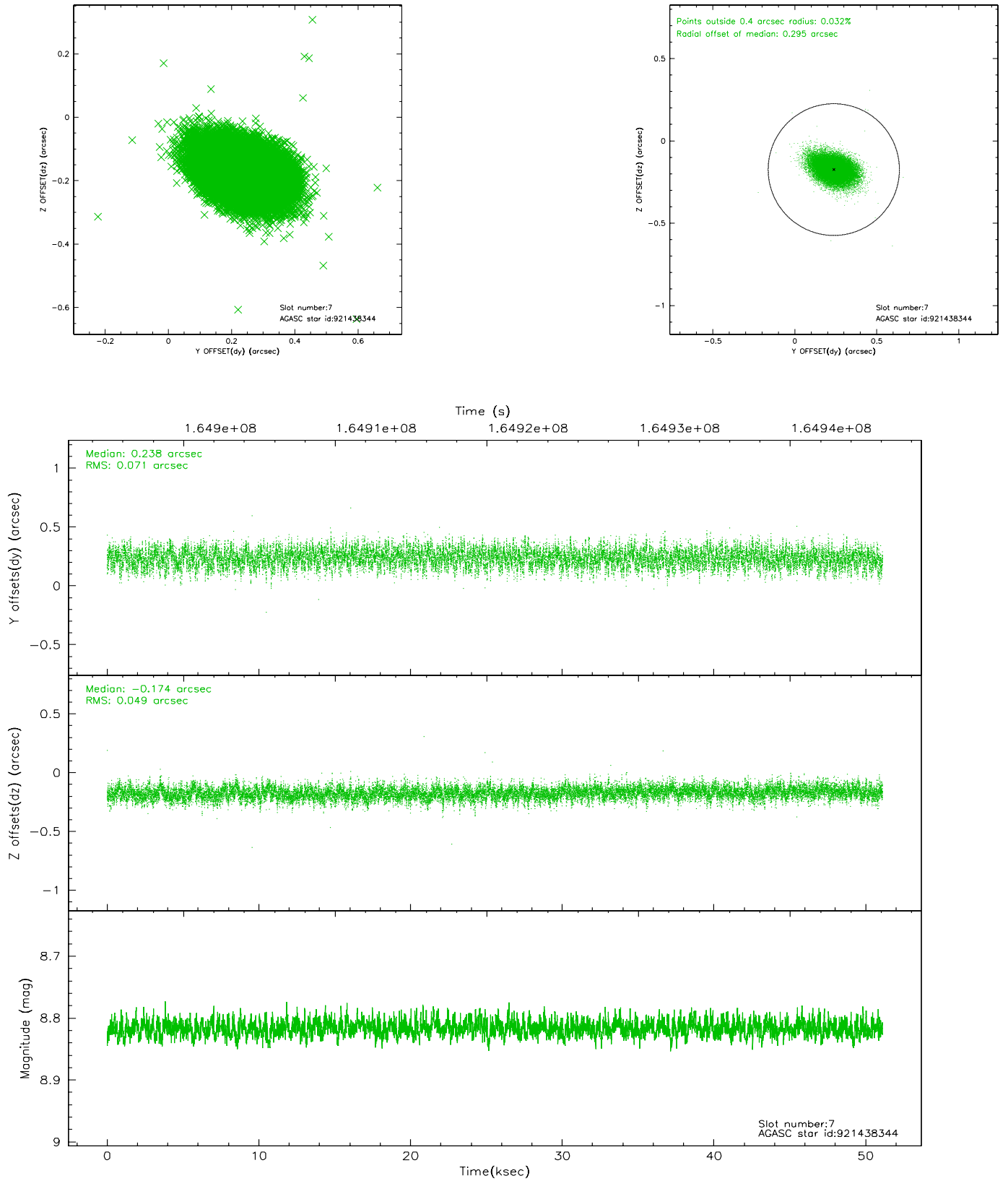
2.4.3 Slot 5



2.4.4 Slot 6

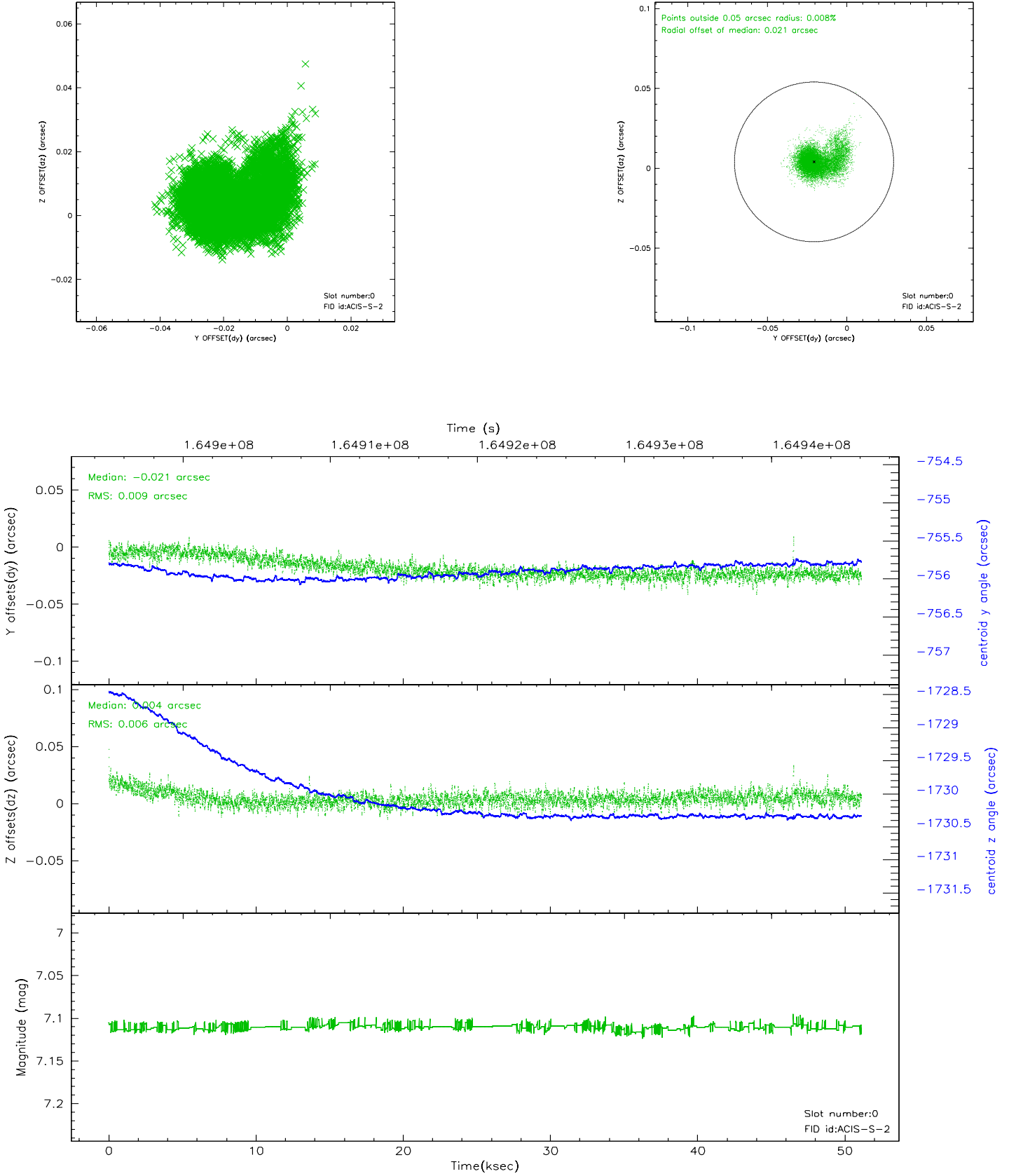


2.4.5 Slot 7

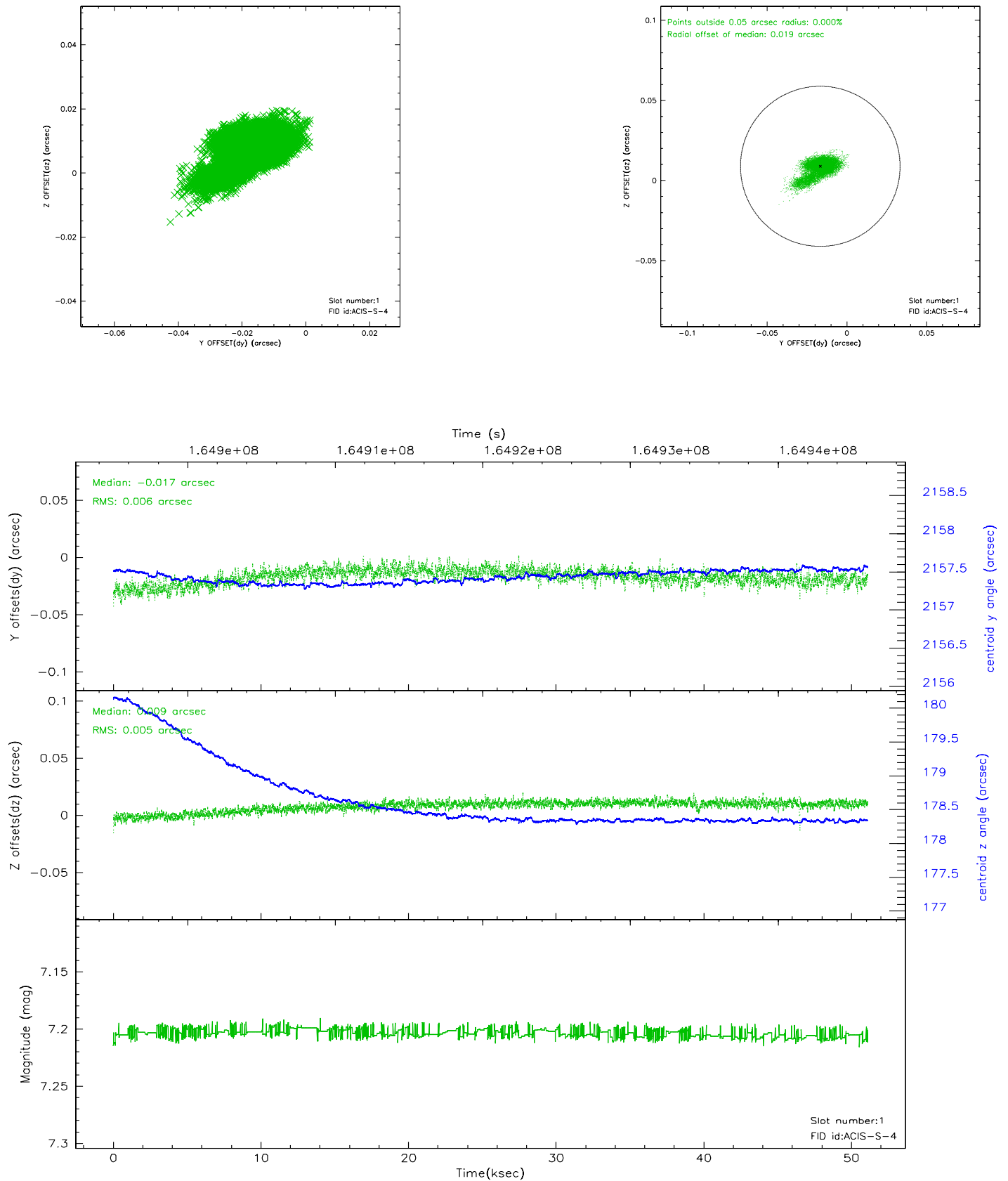


2.5 FID Slots

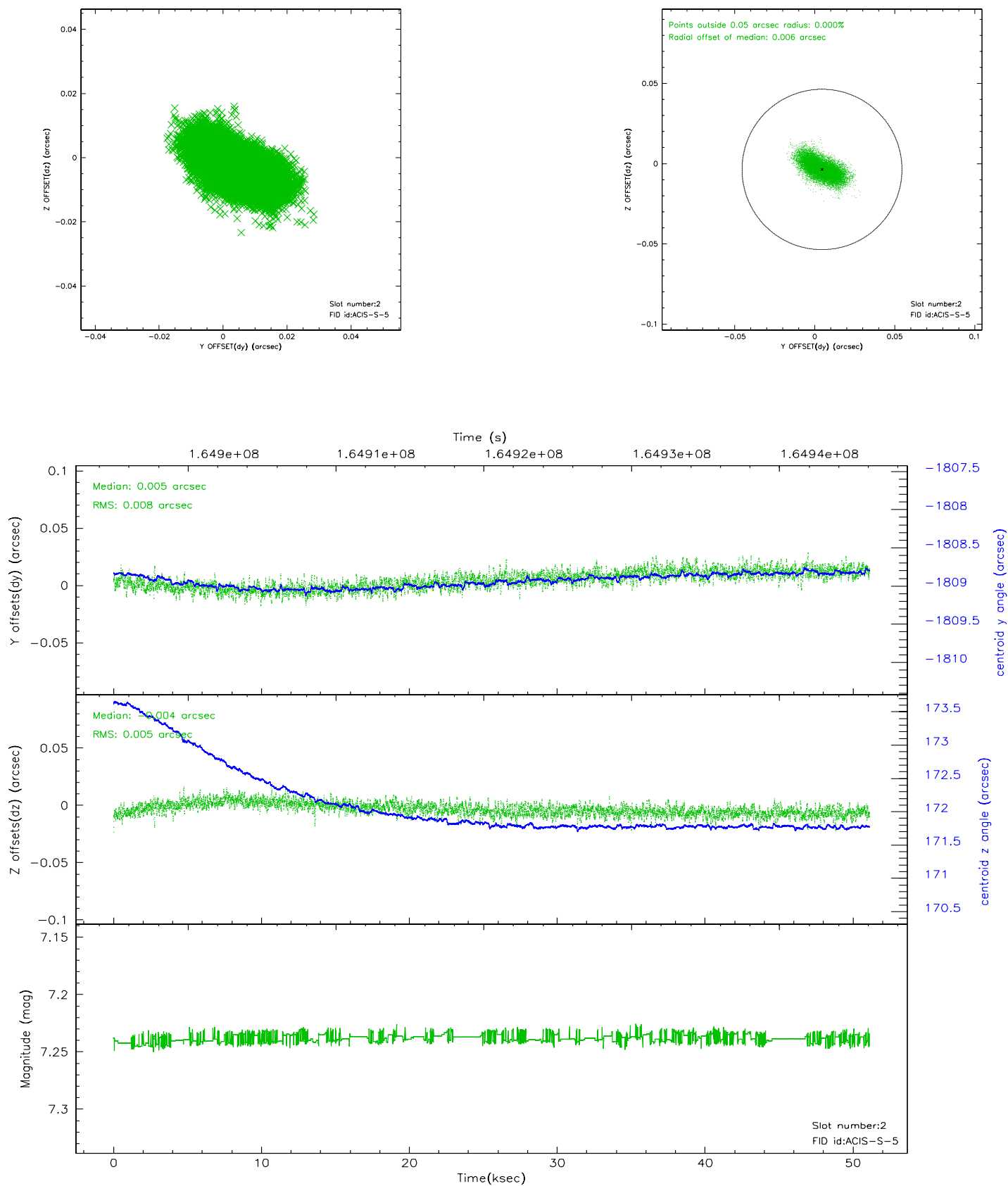
2.5.1 Slot 0



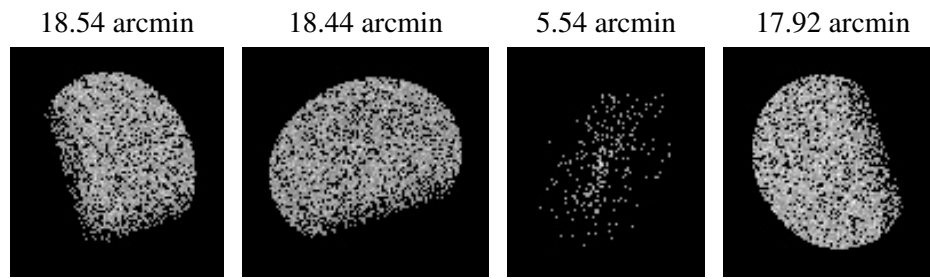
2.5.2 Slot 1



2.5.3 Slot 2



3 Point Sources



A Summary

A.1 Status

V&V Scientist	Beth Sundheim
V&V Date (YYYY-MM-DD)	2006.07.26
V&V Edition	1
V&V Disposition and Status	OK
V&V Charge Time	51.113

A.2 Comments