

V&V Reference Report

L2 ASCDS Version : 7.6.9

Observation 3840 - L2 Version 001
Chandra X-Ray Center

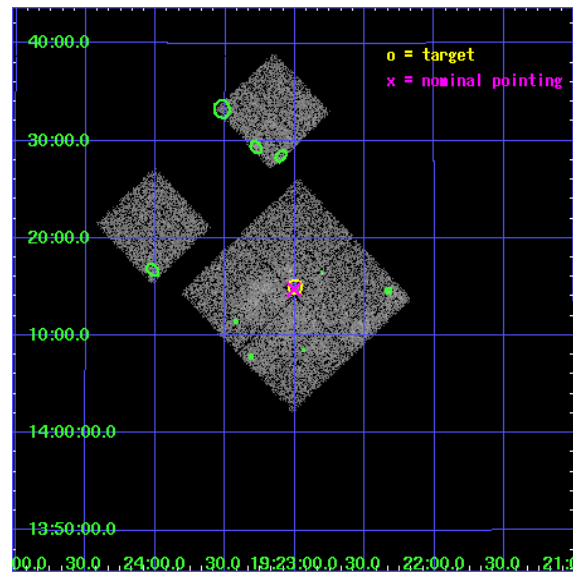
L2 Processing Date : Oct 14 2006

Contents

1	Front	2
2	OBI	3
2.1	OBI	3
2.1.1	Images	3
2.1.2	Bias	3
2.1.3	Parameters	4
2.1.4	Events	4
2.2	Compared Parameters	5
2.3	Aspect	6
2.4	Star Slots	9
2.4.1	Slot 3	9
2.4.2	Slot 4	10
2.4.3	Slot 5	11
2.4.4	Slot 6	12
2.4.5	Slot 7	13
2.5	FID Slots	14
2.5.1	Slot 0	14
2.5.2	Slot 1	15
2.5.3	Slot 2	16
3	Point Sources	17
A	Summary	18
A.1	Status	18
A.2	Comments	18

1 Front

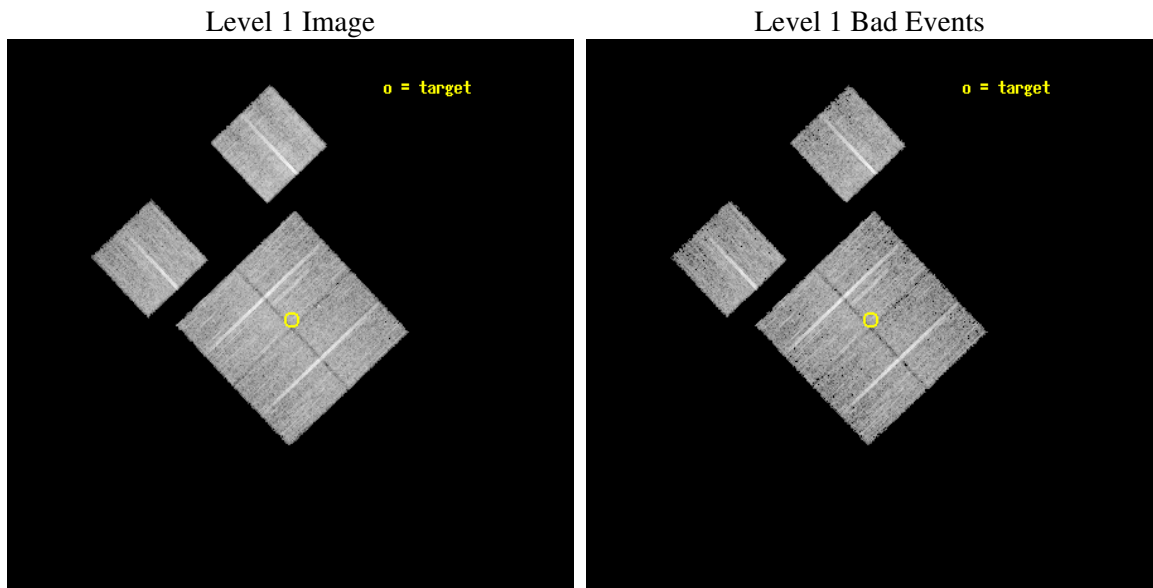
seq_num	500319
obs_id	3840
title	SUPERNOVA REMNANT(S) AND STAR-FORMING REGIONS IN THE W51 COMPLEX
observer	PROF. BON-CHUL KOO
object	W51 NORTH
dtcycle	0
cycle	P
ra_targ	290.75
dec_targ	14.25
ra_nom	290.75189358176
dec_nom	14.245777665
roll_nom	316.53562568737
revision	2
ontime	11753.599956214
livetime	11604.768796401
ontime0	11753.599956214
ontime1	11753.599956214
ontime2	11750.358995914
ontime3	11753.599956214
ontime6	11753.599956214
ontime8	11753.599956214
l2events	39025



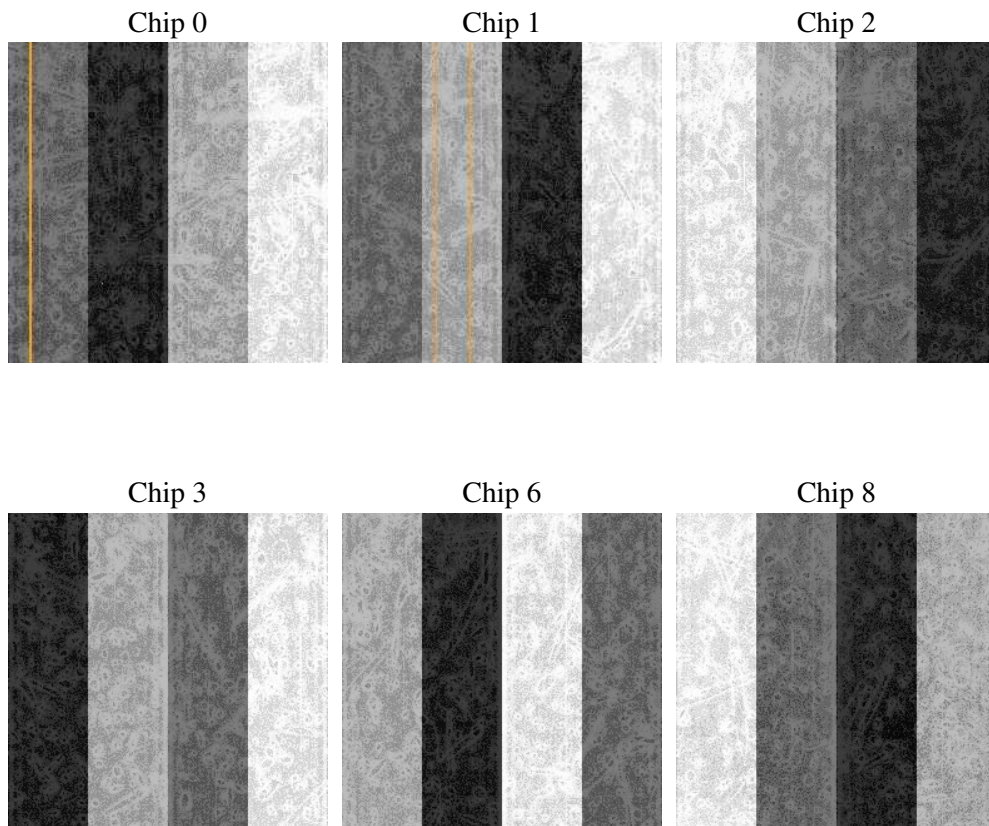
2 OBI

2.1 OBI

2.1.1 Images



2.1.2 Bias



2.1.3 Parameters

obi_num	0
ascdsver	7.6.9
caldbver	3.2.3
date	2006-10-14T21:02:27
revision	2

sched_exp_time	12000.000000
ontime	11758.344360471
ontime0	11758.344360471
ontime1	11758.344380349
ontime2	11755.103400171
ontime3	11758.344360471
ontime6	11758.344360471
ontime8	11758.344380379
l1events	382322

2.1.4 Events

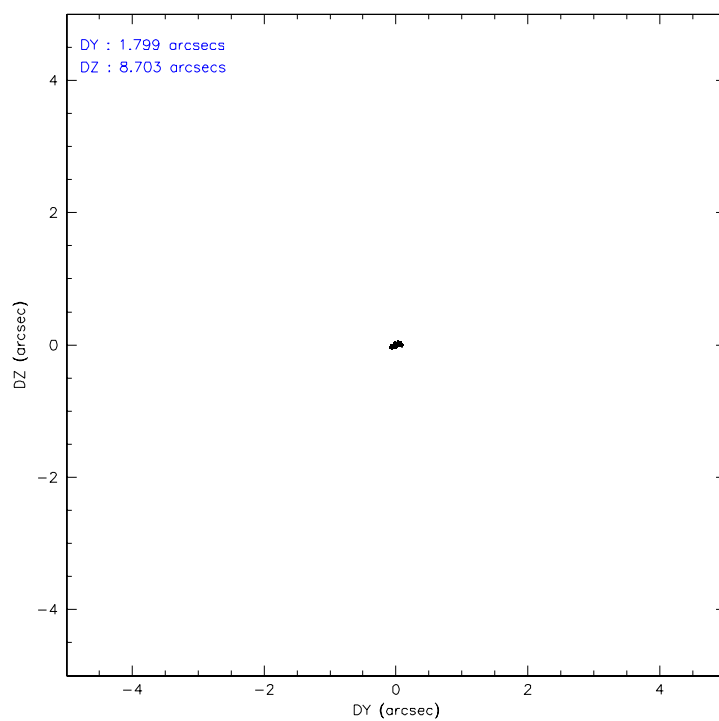
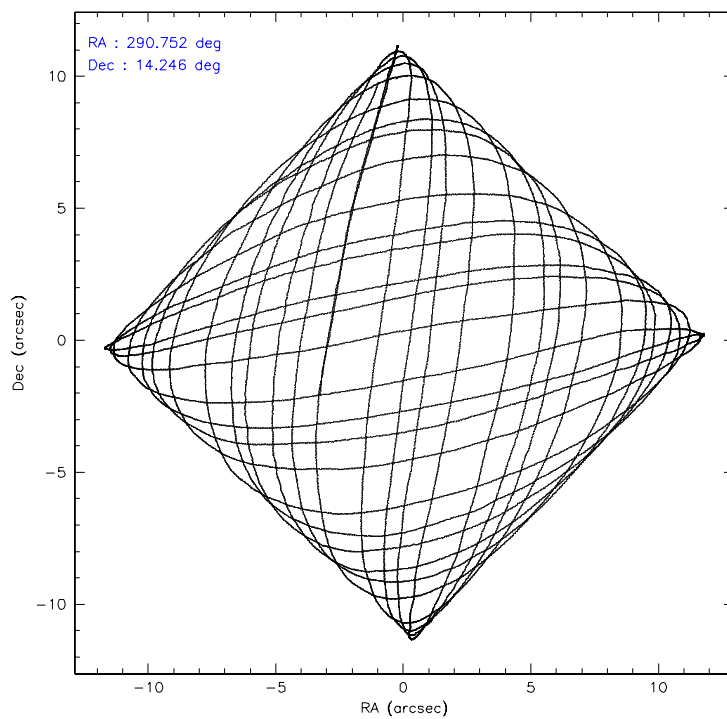
	ccd 0	ccd 1	ccd 2	ccd 3	ccd 6	ccd 8
level 1 events	58768	57444	66154	61887	58740	79329
rejected events	50402	49146	57732	55487	52191	61663
rejected %	85%	85%	87%	89%	88%	77%

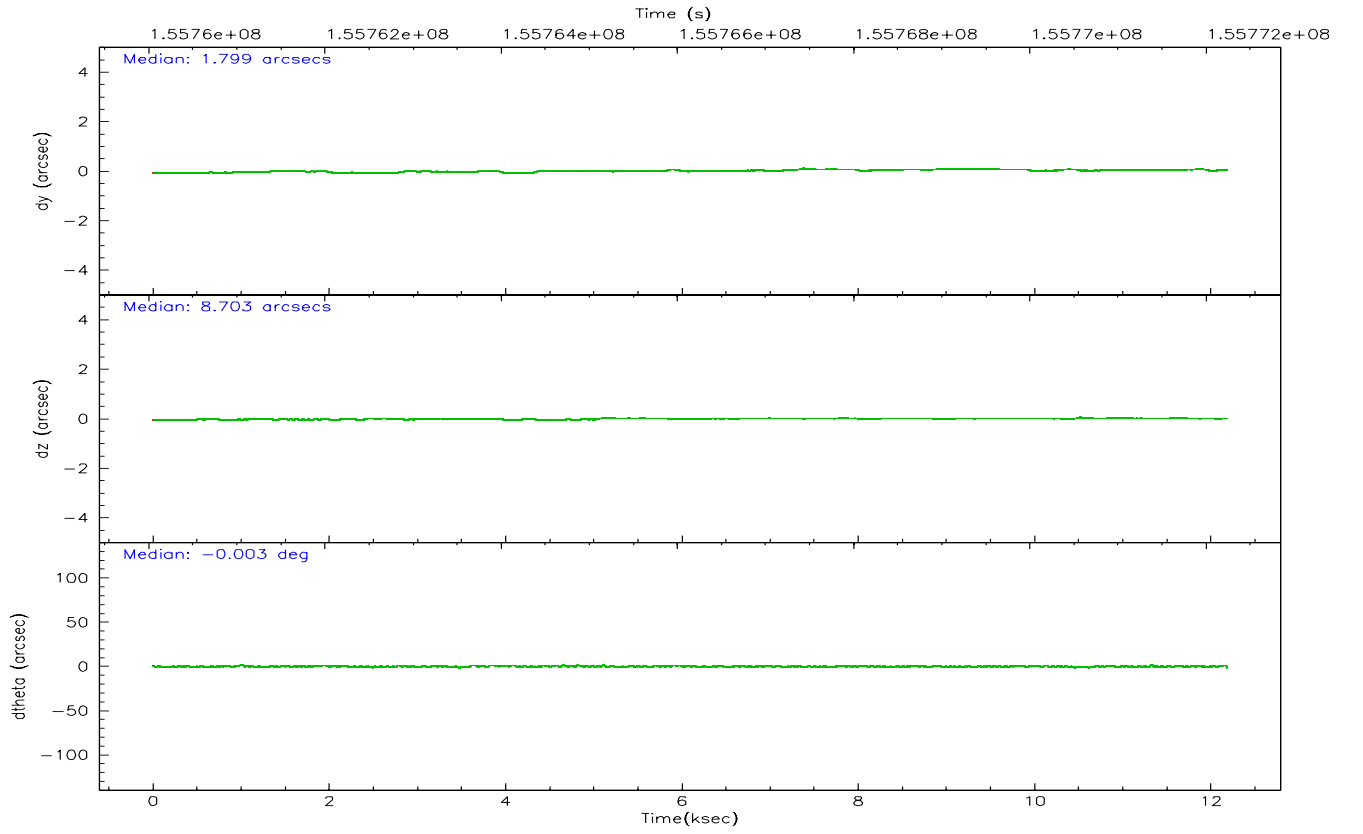
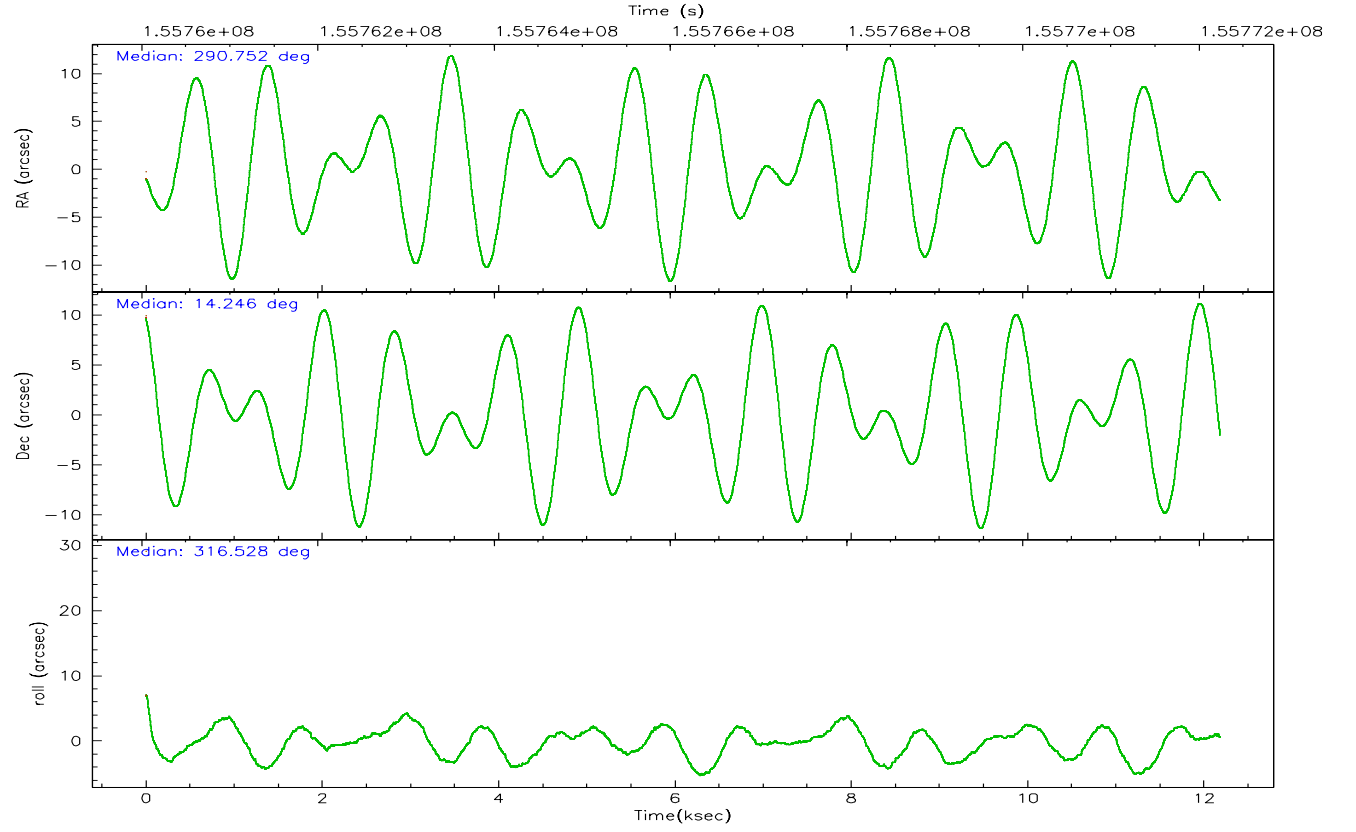
	ccd 0	ccd 1	ccd 2	ccd 3	ccd 6	ccd 8
grade 0 events	4077	3755	4331	2617	2647	5414
	6%	6%	6%	4%	4%	6%
grade 1 events	49	35	51	28	36	57
	0%	0%	0%	0%	0%	0%
grade 2 events	1619	1552	1572	1326	1300	3817
	2%	2%	2%	2%	2%	4%
grade 3 events	724	804	732	711	666	1967
	1%	1%	1%	1%	1%	2%
grade 4 events	764	790	687	691	662	1803
	1%	1%	1%	1%	1%	2%
grade 5 events	2091	2211	1929	2169	2192	3283
	3%	3%	2%	3%	3%	4%
grade 6 events	1190	1402	1108	1058	1276	4686
	2%	2%	1%	1%	2%	5%
grade 7 events	48254	46895	55744	53287	49961	58302
	82%	81%	84%	86%	85%	73%

2.2 Compared Parameters

Parameter	Planned	Actual	Parameter	Planned	Actual
Instrument	ACIS	ACIS	Obspar format version number	6	6
Detector	ACIS-012368	ACIS-012368	Obspar file type	PREDICTED	ACTUAL
Grating	NONE	NONE	Obspar update status	NONE	UPDATED
Data mode	VFAINT	VFAINT	Number of optional ACIS chips dropped	0	0
Observation mode	POINTING	POINTING	On-chip summing requested	N	N
Pointing RA	290.724406	290.7518935817578	Subarray requested	NONE	NONE
Pointing Dec	14.252014	14.24577766499961	Alternating exposures requested	N	N
Pointing Roll	316.333706	316.5356256873691	Primary exposure time	0.000000	3.2
SIM focus pos (mm)	-0.782348	-0.7809083437167272			
SIM defocus (mm)	0	0.001439871863259334			
SIM translation stage pos (mm)	-233.592463	-233.5874344608287			
SIM translation stage offset (mm)	0	-0.005018542100998502			
Observation start time	155760234.184000	155759858.52102			
Observation start date	2002-12-08T18:42:50	2002-12-08T18:37:38			
Observation end time	155772234.184000	155772698.18405			
Observation end date	2002-12-08T22:02:50	2002-12-08T22:11:38			
Read mode	TIMED	TIMED			

2.3 Aspect



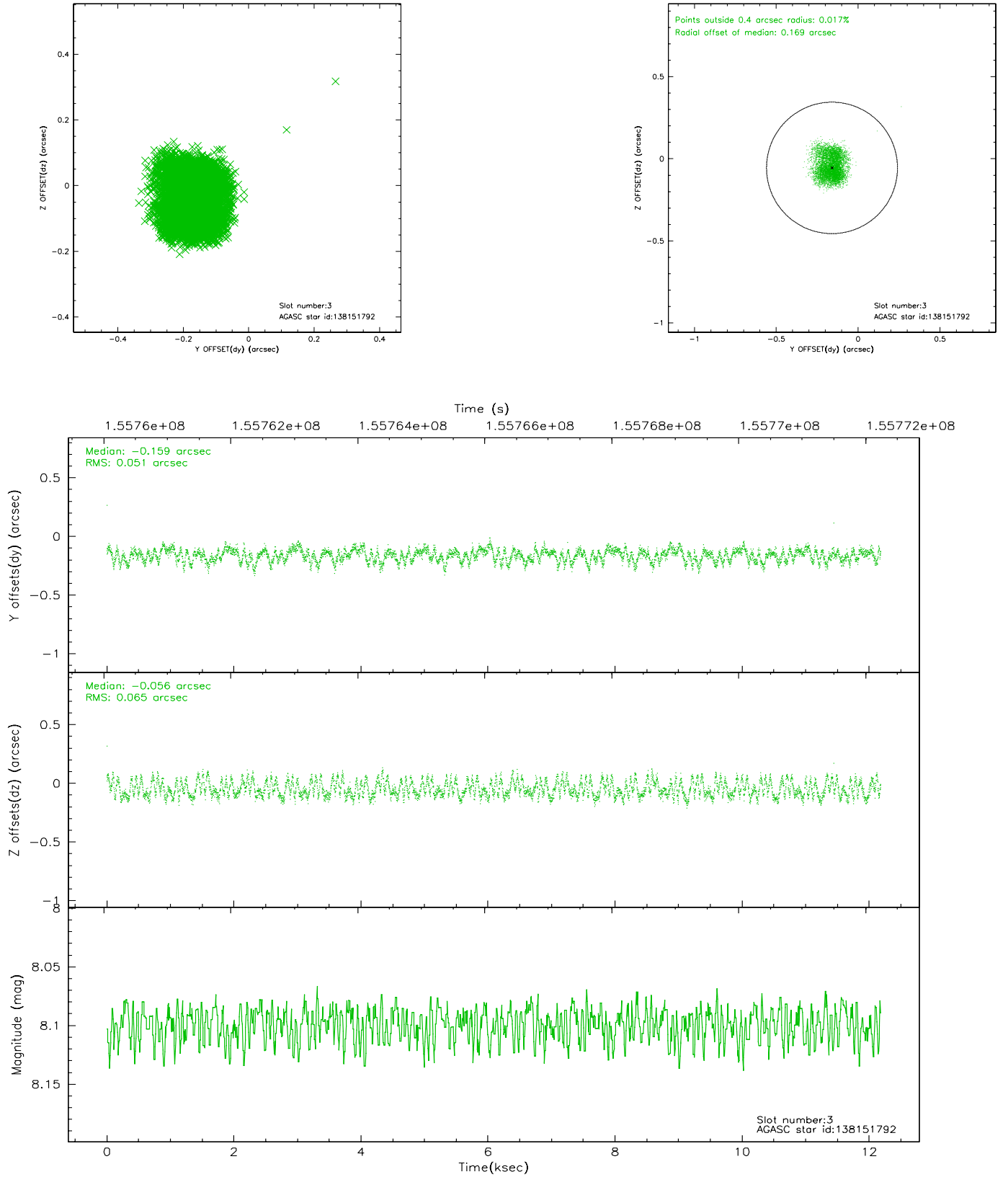


Slot Statistics

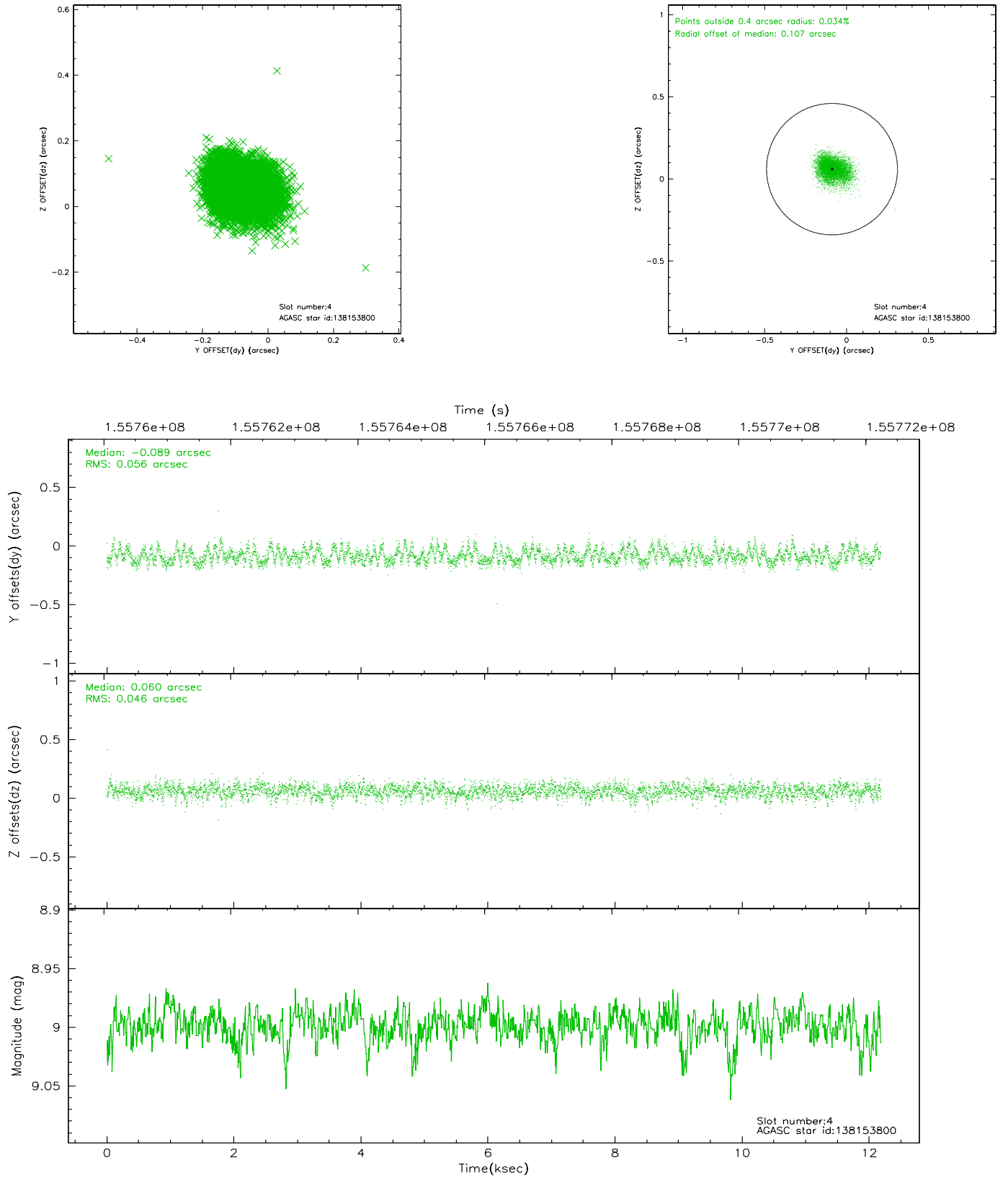
slot	status	id	mag	n_pts	med_dy	med_dz	dr1	dr2	ra	dec	mean_y	mean_z
0	FID	ACIS-I-1	7.24	2973	-0.098	0.072	0.006	0.011	0.000000	0.000000	937.94	-832.05
1	FID	ACIS-I-2	7.15	2973	0.013	-0.060	0.009	0.017	0.000000	0.000000	-755.81	-838.86
2	FID	ACIS-I-5	7.23	2973	-0.007	0.060	0.007	0.013	0.000000	0.000000	-1810.47	1065.15
3	GUIDE	138151792	8.10	5943	-0.159	-0.056	0.090	0.136	290.048456	14.138751	-1426.52	-1922.00
4	GUIDE	138153800	9.00	5945	-0.089	0.060	0.077	0.124	290.997179	14.820950	-727.22	2137.18
5	GUIDE	138155968	9.14	5943	0.257	-0.218	0.097	0.161	290.713024	13.375477	2151.66	-2309.76
6	GUIDE	139860136	8.52	5941	0.059	0.129	0.094	0.154	291.441042	14.451940	1308.96	2248.33
7	GUIDE	209730616	9.03	5942	-0.063	0.079	0.094	0.157	290.681780	15.146698	-2330.08	2227.88

2.4 Star Slots

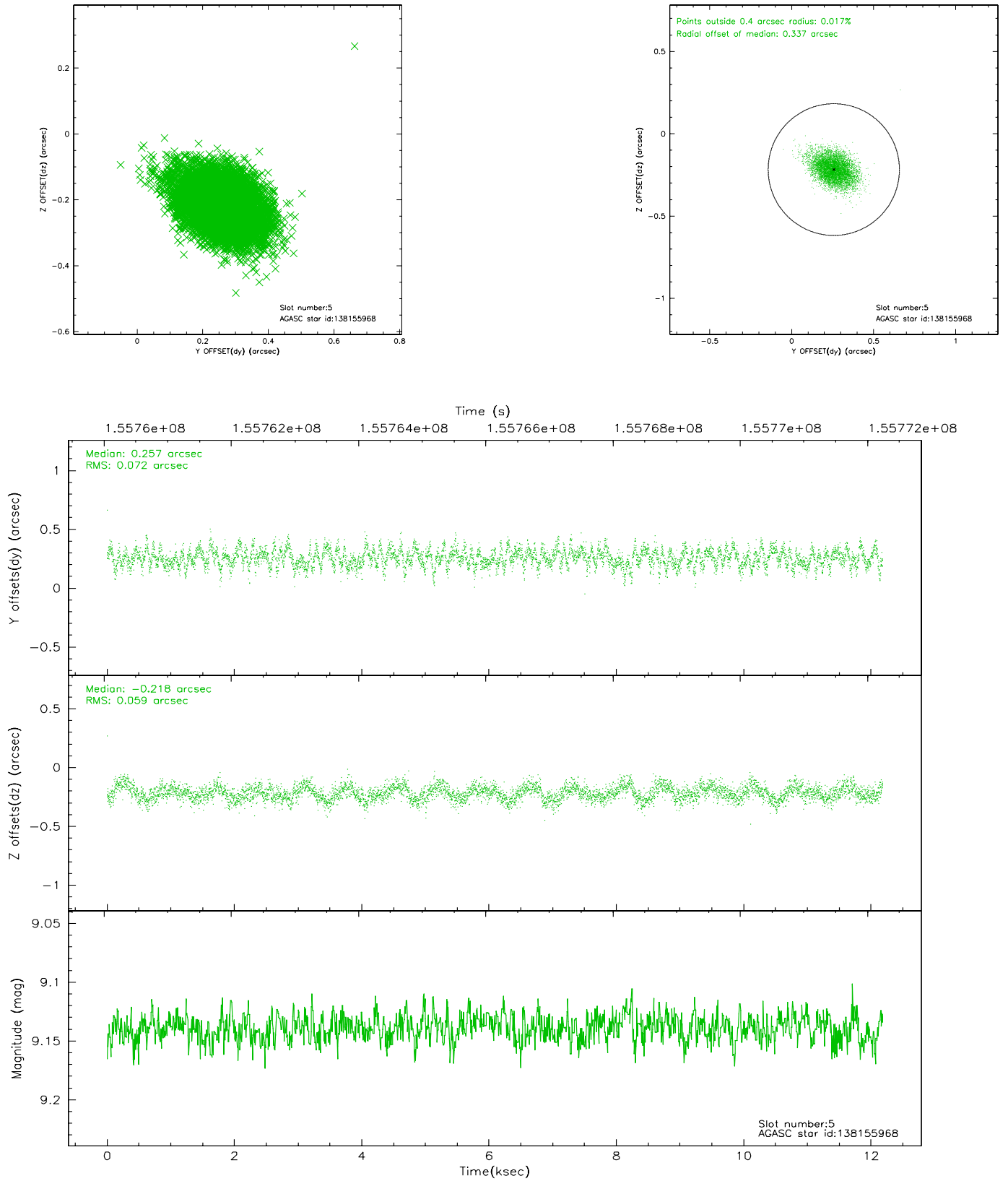
2.4.1 Slot 3



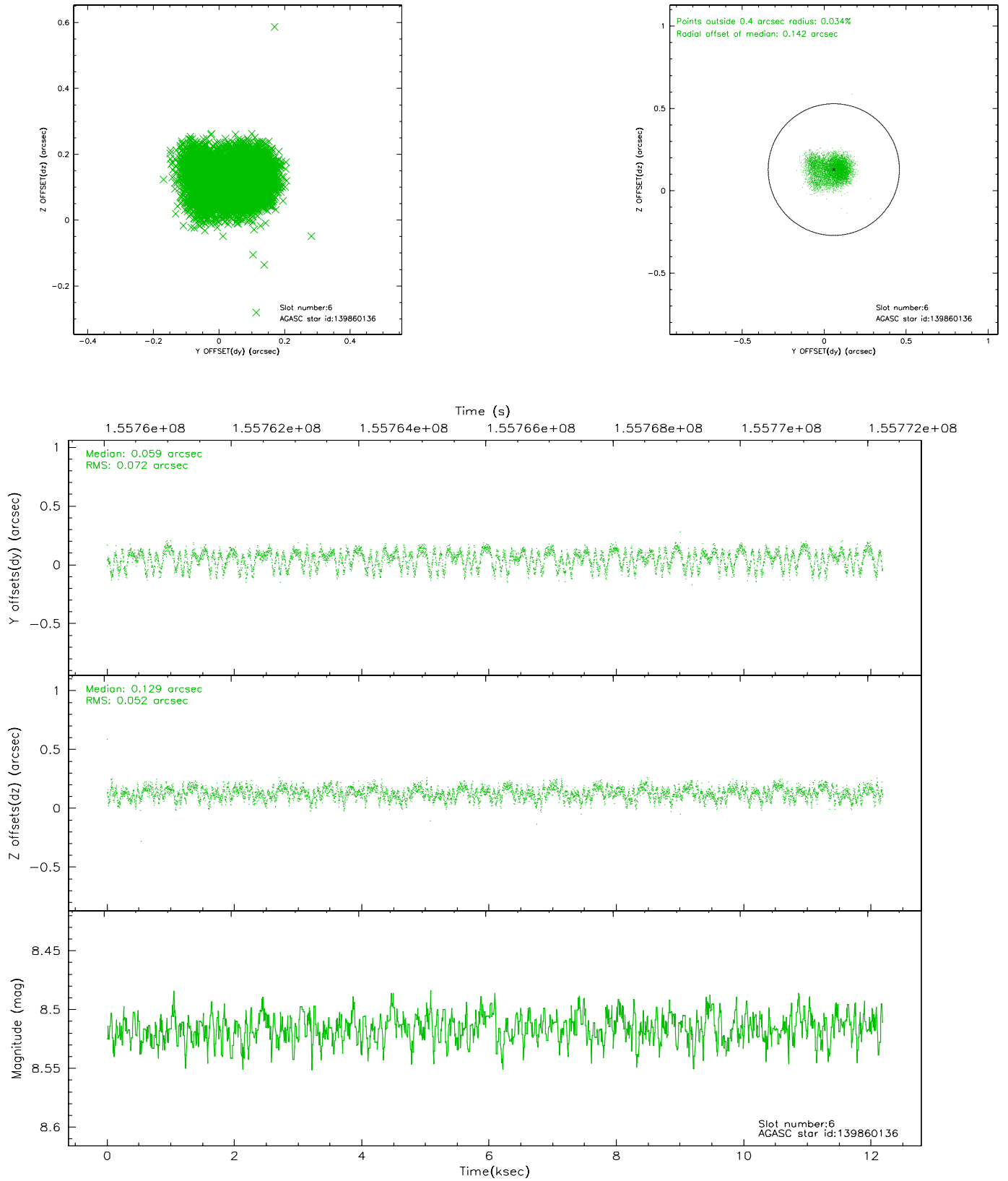
2.4.2 Slot 4



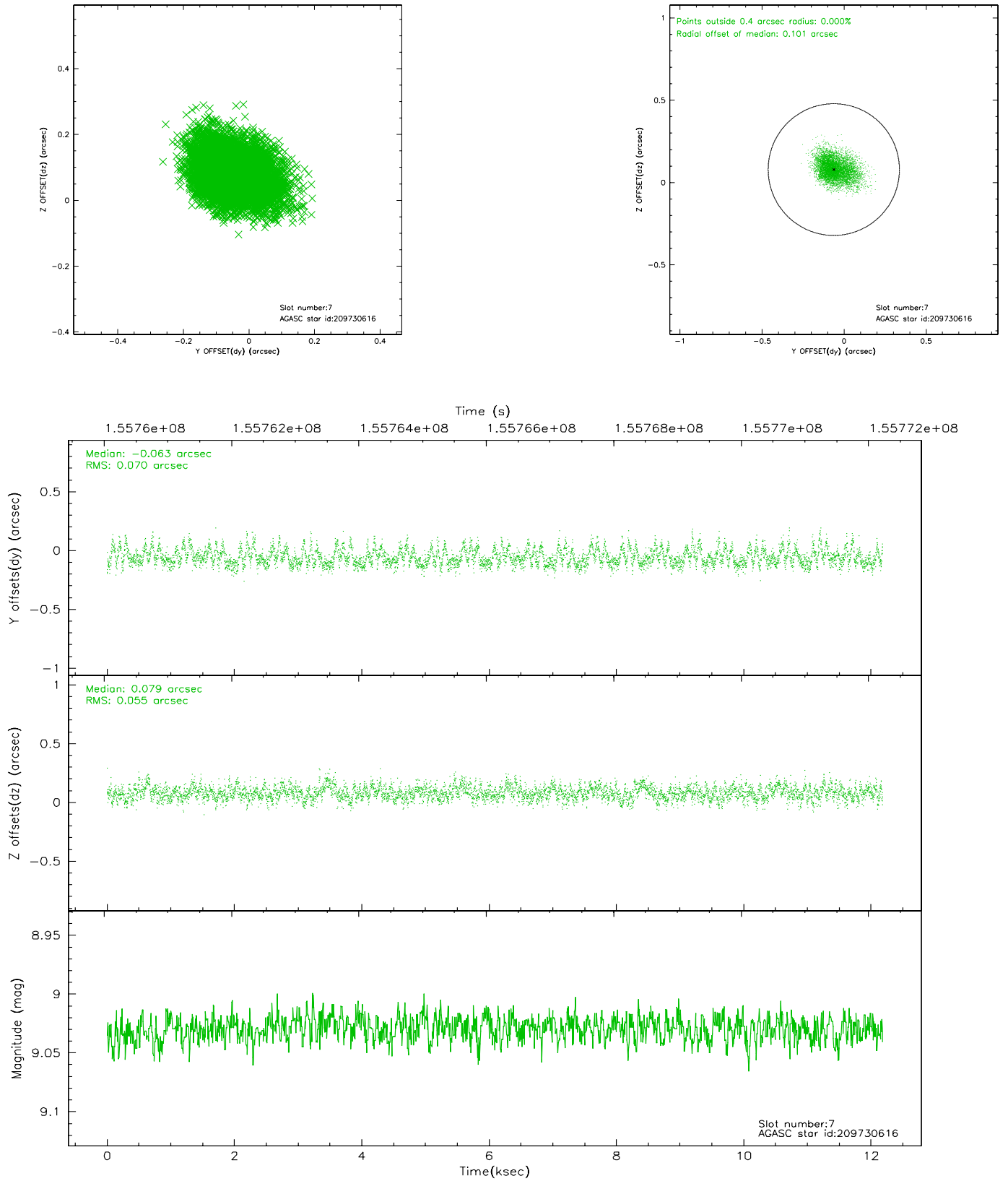
2.4.3 Slot 5



2.4.4 Slot 6

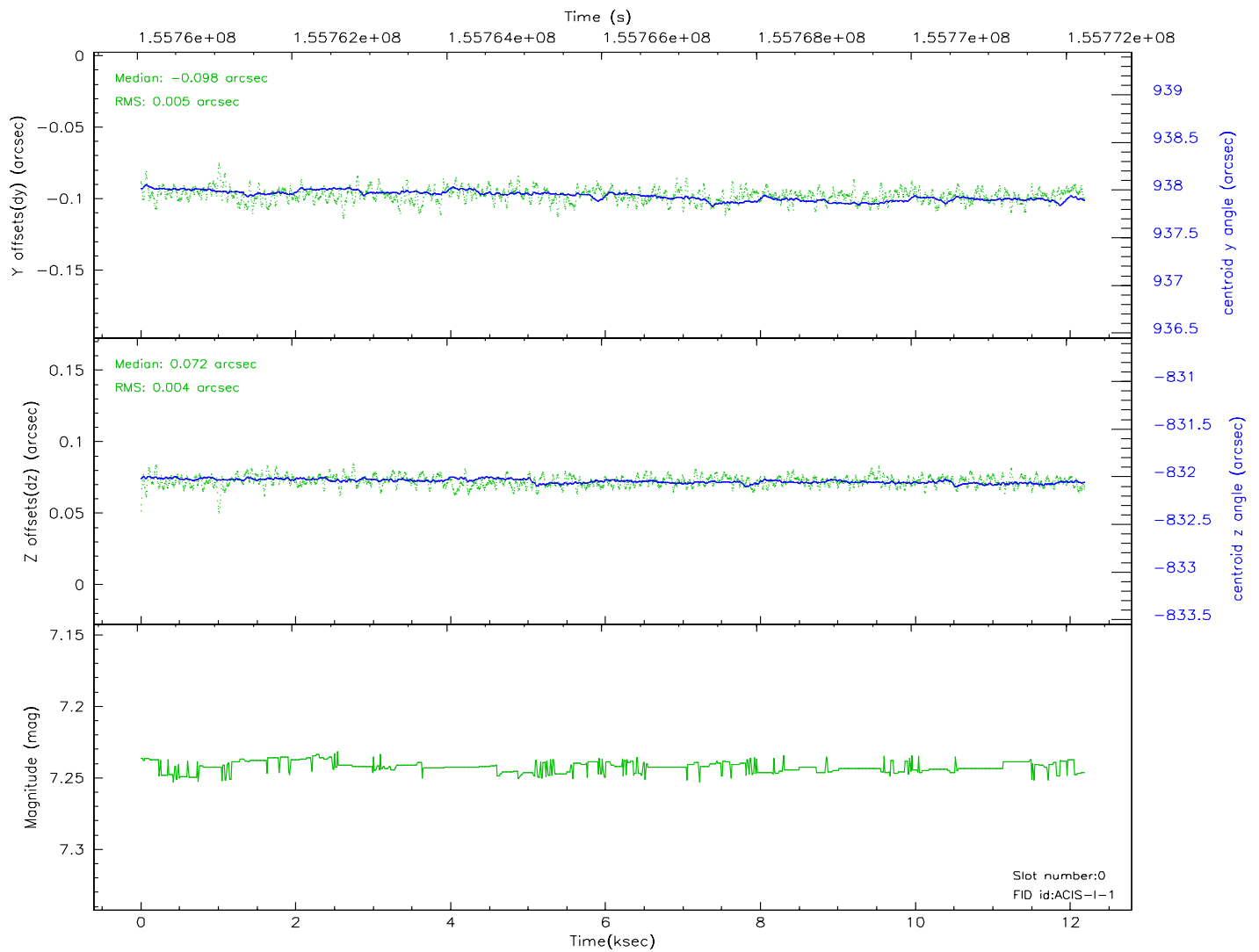
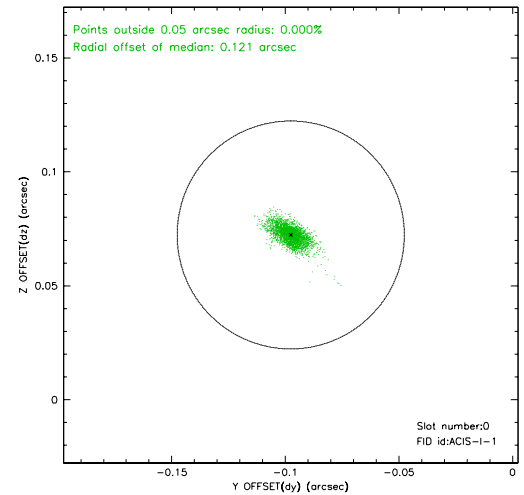
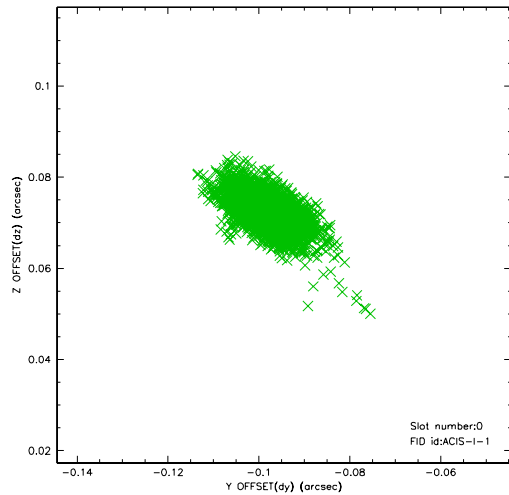


2.4.5 Slot 7

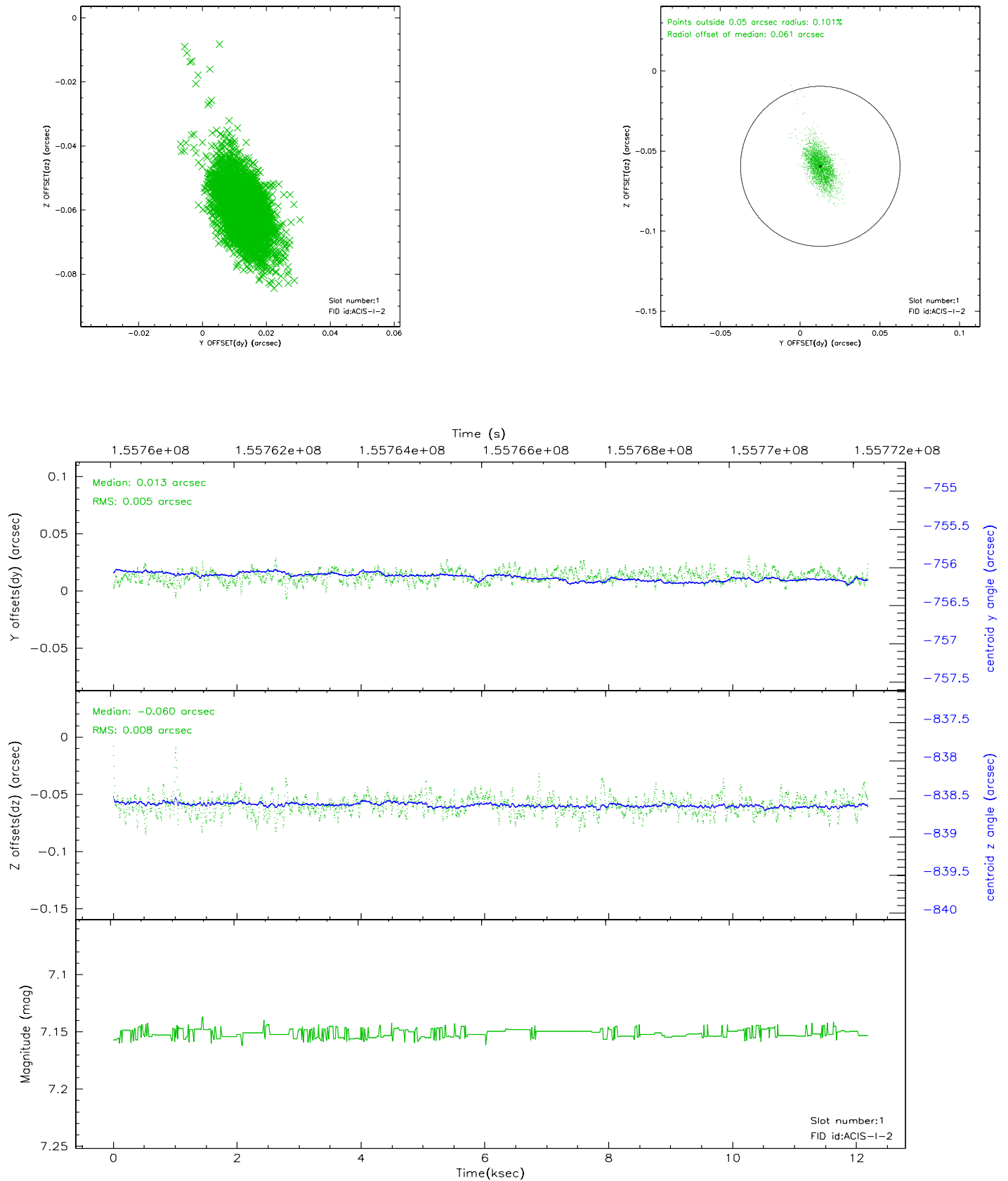


2.5 FID Slots

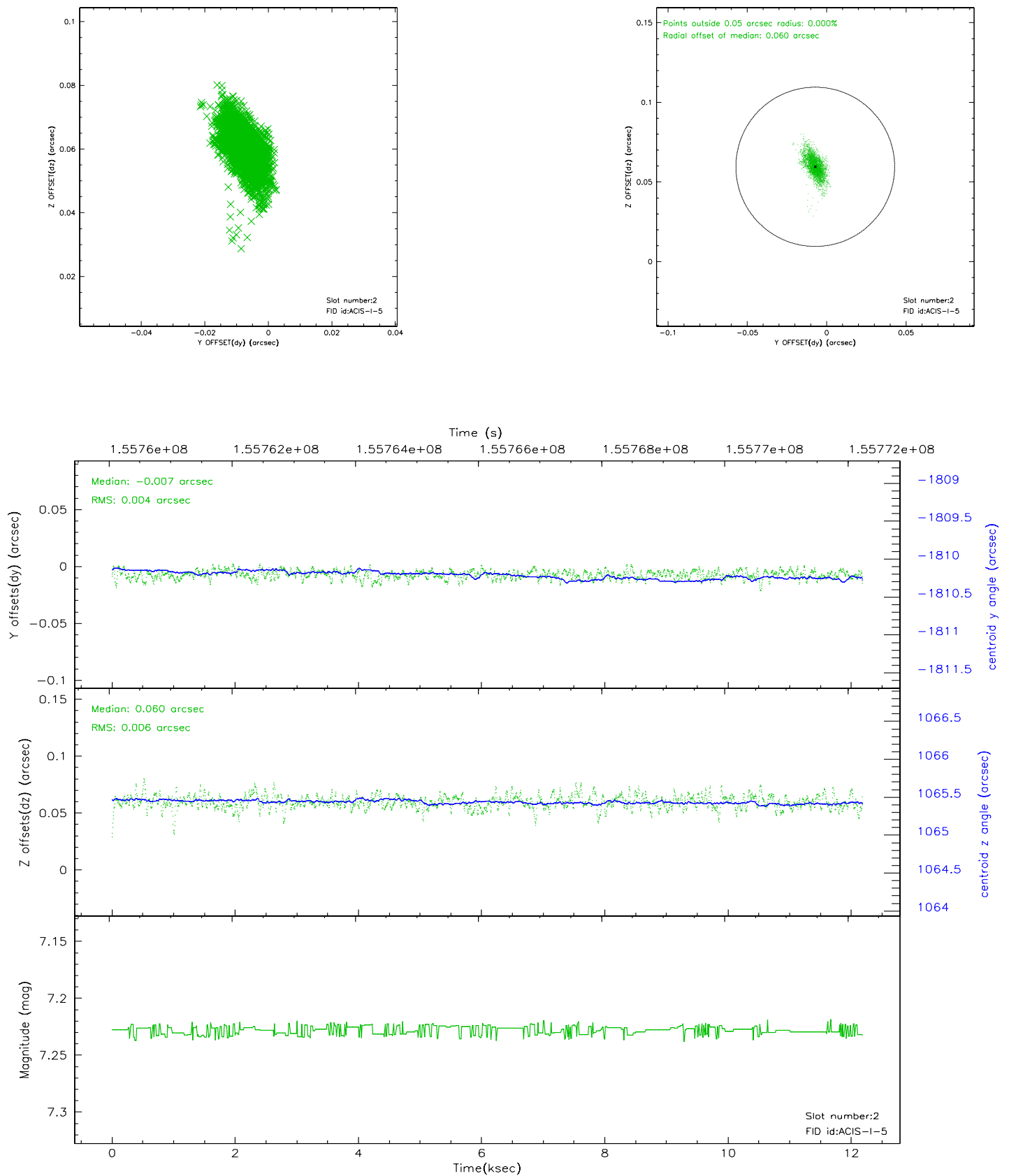
2.5.1 Slot 0



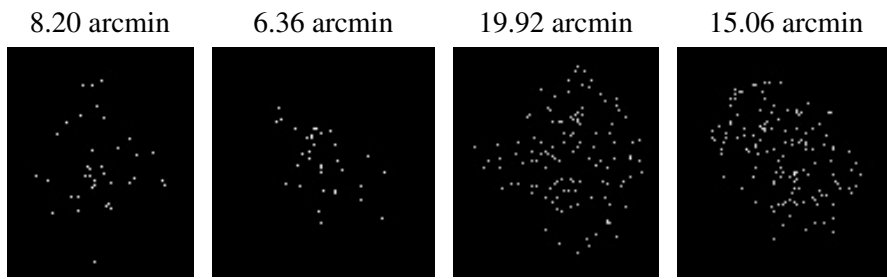
2.5.2 Slot 1



2.5.3 Slot 2



3 Point Sources



A Summary

A.1 Status

V&V Scientist	Beth Sundheim
V&V Date (YYYY-MM-DD)	2006.10.15
V&V Edition	1
V&V Disposition and Status	OK
V&V Charge Time	11.756

A.2 Comments