

V&V Reference Report

L2 ASCDS Version : 8.4.5

Observation 3810 - L2 Version 3
Chandra X-Ray Center

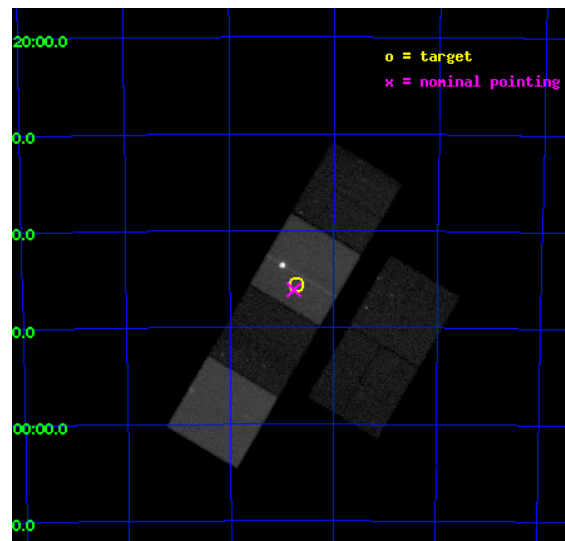
L2 Processing Date : Oct 22 2012

Contents

1	Front	2
2	OBI	3
2.1	OBI	3
2.1.1	Images	3
2.1.2	Bias	3
2.1.3	Parameters	4
2.1.4	Events	4
2.2	Compared Parameters	5
2.3	Aspect	6
2.4	Star Slots	9
2.4.1	Slot 3	9
2.4.2	Slot 4	10
2.4.3	Slot 5	11
2.4.4	Slot 6	12
2.4.5	Slot 7	13
2.5	FID Slots	14
2.5.1	Slot 0	14
2.5.2	Slot 1	15
2.5.3	Slot 2	16
A	Summary	17
A.1	Status	17
A.2	Comments	17

1 Front

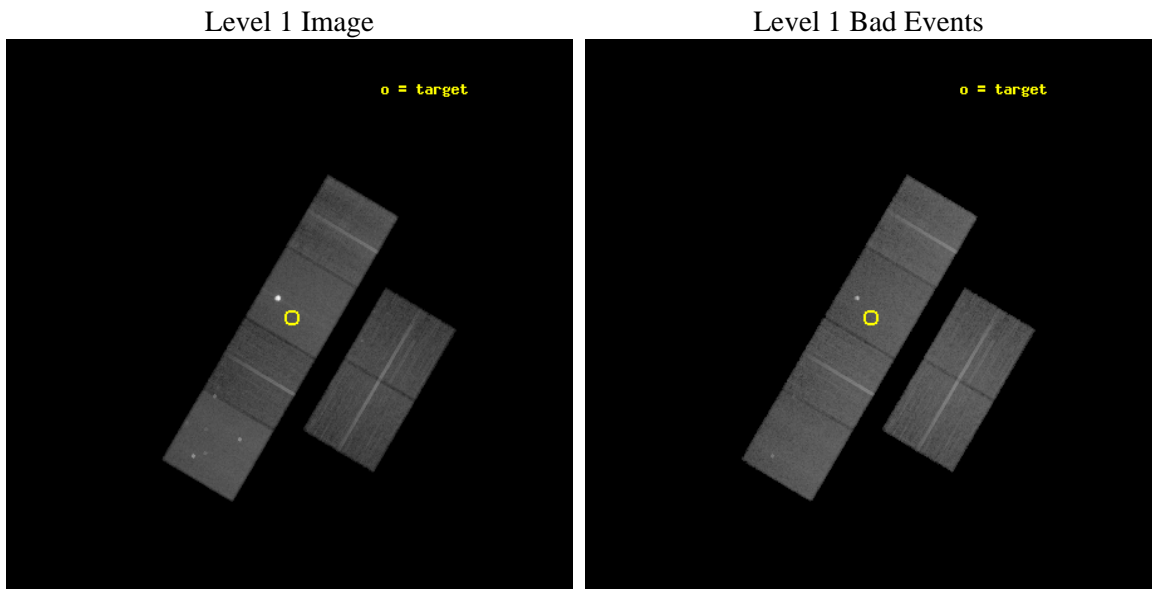
seq_num	400297	Sequence number
obs_id	3810	Observation id
title	FINDING BLACK HOLES AND UNDERSTANDING STAR CLUSTER EVOLUTION WITH CHANDRA	Proposal title
observer	Dr. Simon Portegies Zwart	Principal investigator
object	NGC 1850 A/B	Source name
dtcycle	0	
cycle	P	events from which exps? Prim/Second/Both
ra_targ	77.183333	Observer's specified target RA [deg]
dec_targ	-68.76	Observer's specified target Dec [deg]
ra_nom	77.192609885513	Nominal RA [deg]
dec_nom	-68.769034085823	Nominal Dec [deg]
roll_nom	300.50907641283	Nominal Roll [deg]
revision	3	Processing version of data
ontime	30053.873031676	Sum of GTIs [s]
livetime	29673.312795079	Livetime [s]
ontime2	30050.673111379	Sum of GTIs [s]
ontime3	30053.749881774	Sum of GTIs [s]
ontime5	30053.831961781	Sum of GTIs [s]
ontime6	30053.790921777	Sum of GTIs [s]
ontime7	30053.873031676	Sum of GTIs [s]
ontime8	30047.22679168	Sum of GTIs [s]
l2events	506180	Number of level 2 events



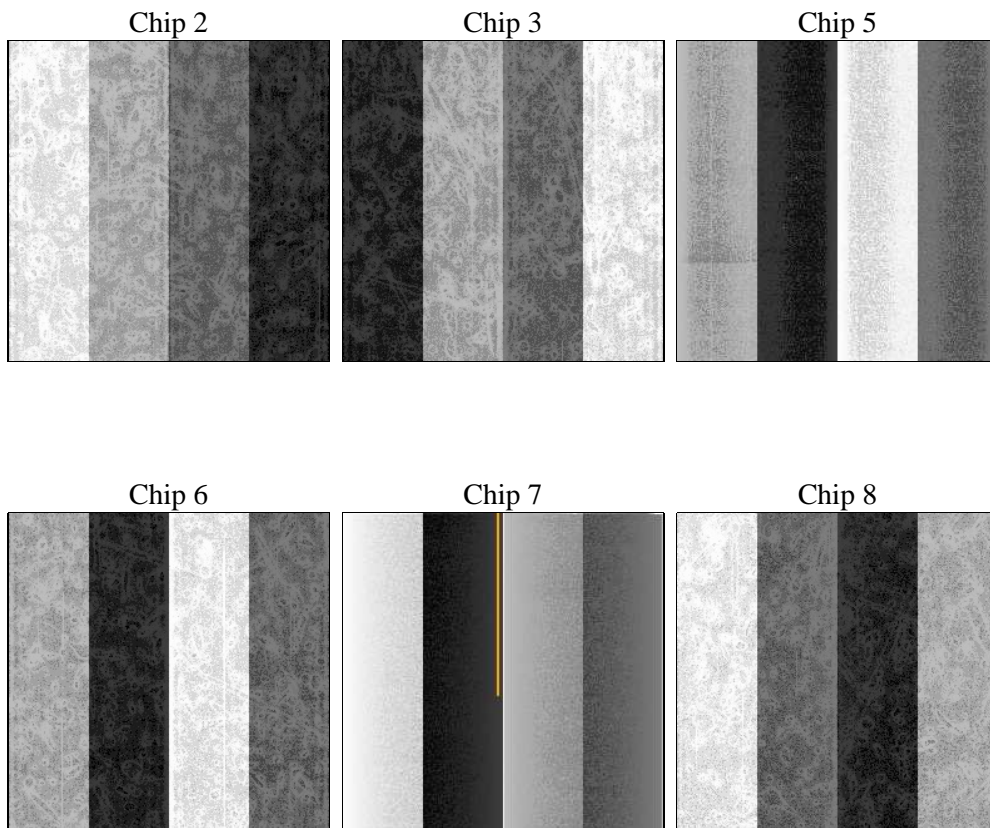
2 OBI

2.1 OBI

2.1.1 Images



2.1.2 Bias



2.1.3 Parameters

obi_num	0	Obi number	sched_exp_time	30300.000000	[s] Scheduled observation exposure time
ascdsver	8.4.5	Processing system revision	ontime	30053.873031676	Sum of GTIs [s]
caldsver	4.5.2	 	ontime2	30050.673111379	Sum of GTIs [s]
date	2012-10-22T05:49:19	Date and time of file creation	ontime3	30053.749881774	Sum of GTIs [s]
revision	3	Processing version of data	ontime5	30053.831961781	Sum of GTIs [s]
			ontime6	30053.790921777	Sum of GTIs [s]
			ontime7	30053.873031676	Sum of GTIs [s]
			ontime8	30047.22679168	Sum of GTIs [s]
			l1events	1589536	Number of level 1 events

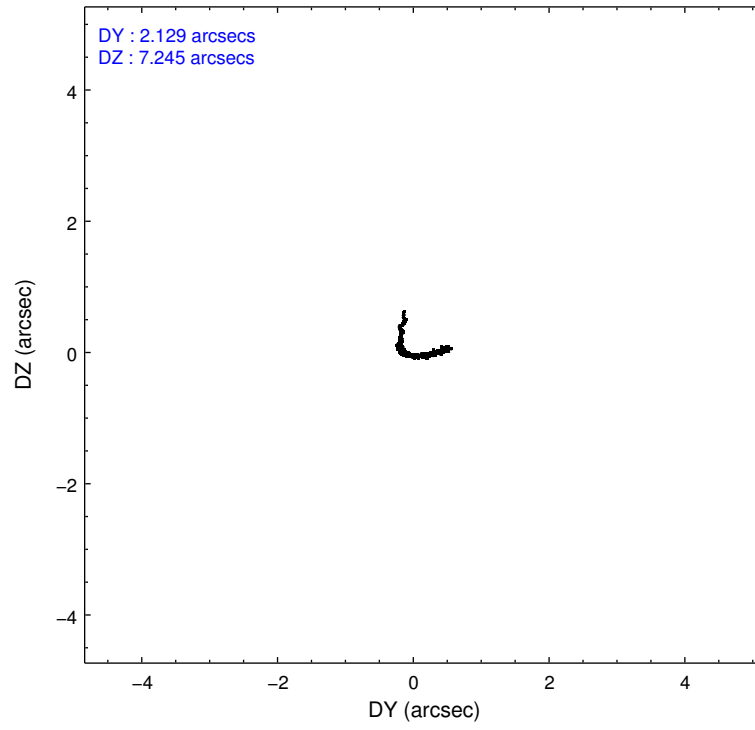
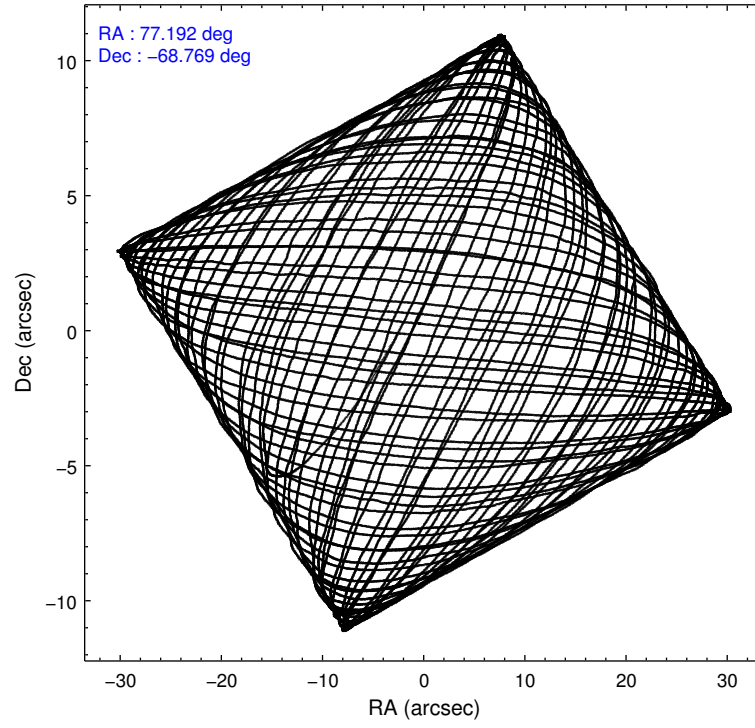
2.1.4 Events

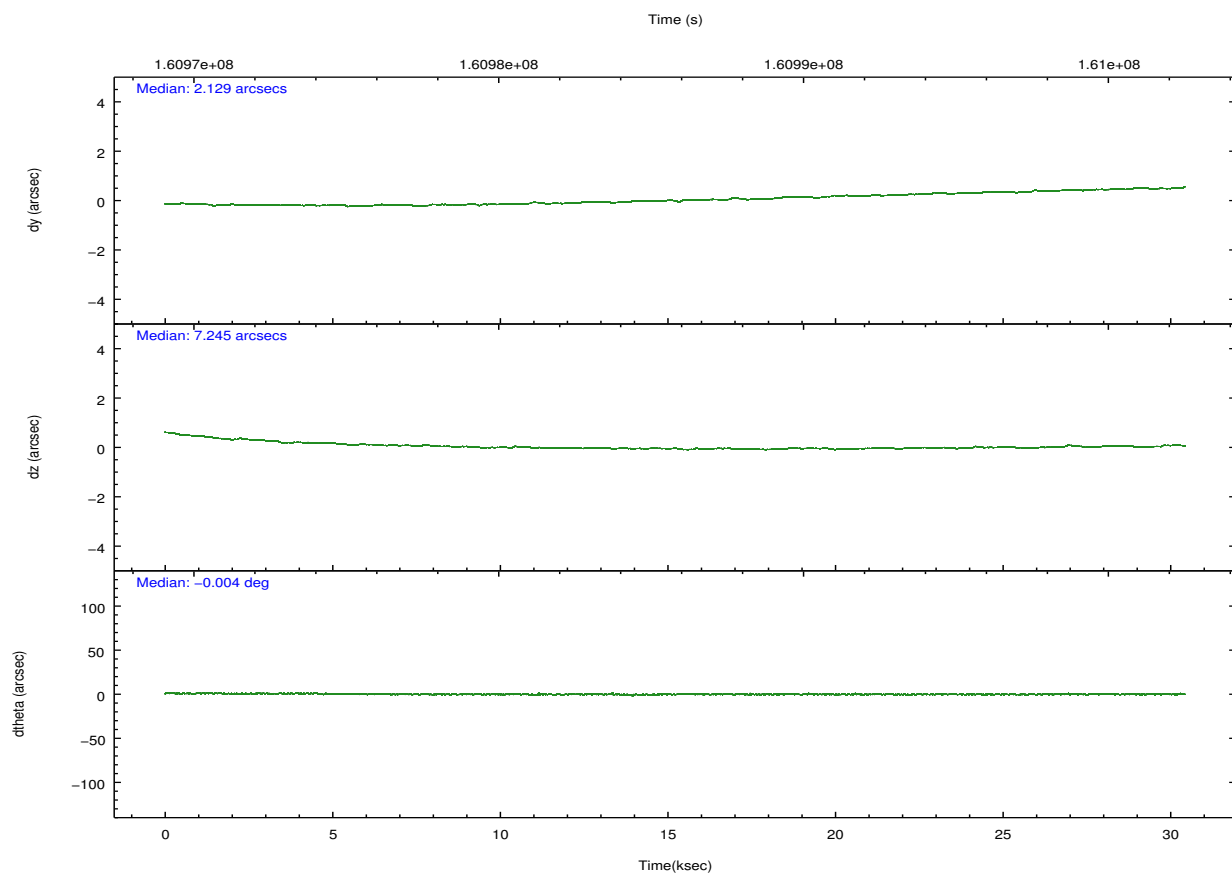
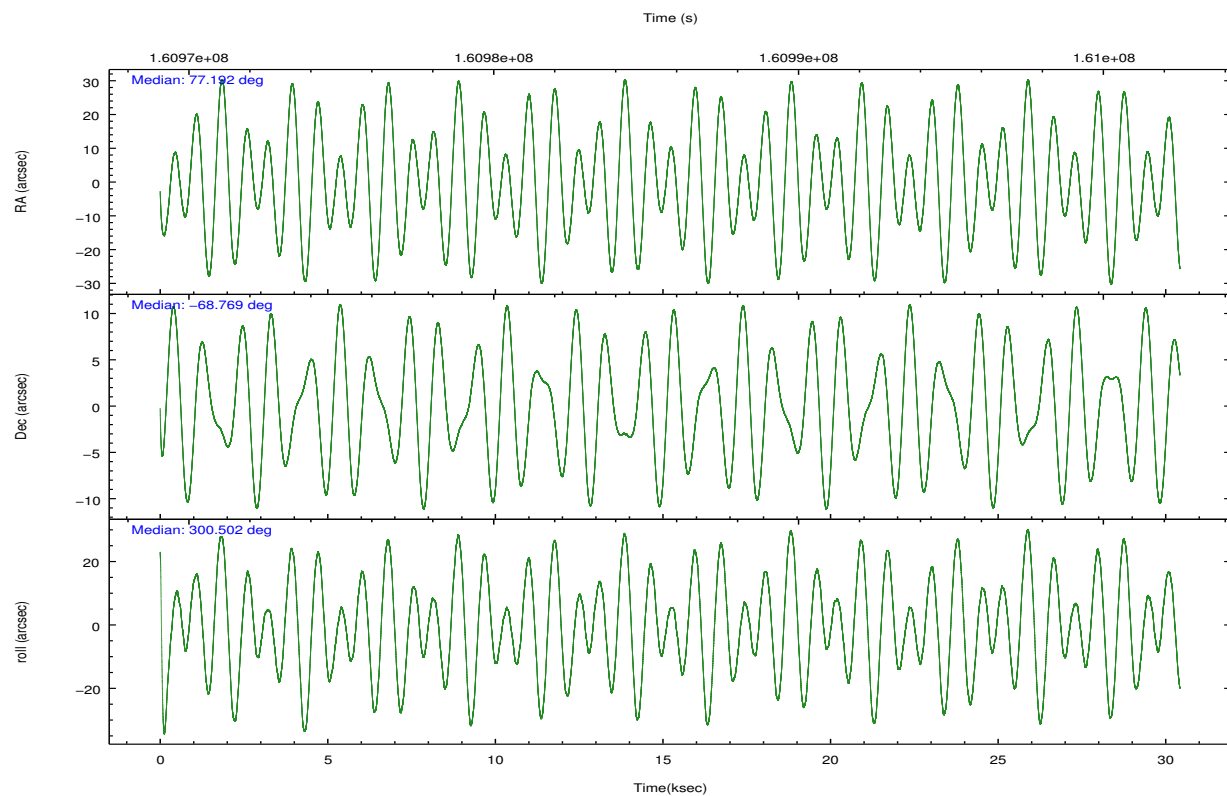
	ccd 2	ccd 3	ccd 5	ccd 6	ccd 7	ccd 8		ccd 2	ccd 3	ccd 5	ccd 6	ccd 7	ccd 8
level 1 events	198612	194886	291697	199780	459417	245144	grade 0 events	11179	11503	14980	10250	65636	16943
rejected events	174810	170510	155634	175891	161839	193731		5%	5%	5%	5%	14%	6%
rejected %	88%	87%	53%	88%	35%	79%	grade 1 events	121	133	428	99	2080	181
								0%	0%	0%	0%	0%	0%
							grade 2 events	4486	4315	41038	4712	72934	10965
								2%	2%	14%	2%	15%	4%
							grade 3 events	2158	2311	5618	2288	33047	5443
								1%	1%	1%	1%	7%	2%
							grade 4 events	2213	2195	5434	2209	32998	5101
								1%	1%	1%	1%	7%	2%
							grade 5 events	7622	8333	21241	8697	29573	11246
								3%	4%	7%	4%	6%	4%
							grade 6 events	3773	4056	69027	4435	93036	12977
								1%	2%	23%	2%	20%	5%
							grade 7 events	167060	162040	133931	167090	130113	182288
								84%	83%	45%	83%	28%	74%

2.2 Compared Parameters

Parameter	Planned	Actual	Parameter	Planned	Actual
Instrument	ACIS	ACIS	Obspar format version number	7	7
Detector	ACIS-235678	ACIS-235678	Obspar file type	PREDICTED	ACTUAL
Grating	NONE	NONE	Obspar update status	NONE	UPDATED
Data mode	FAINT	FAINT	Number of optional ACIS chips dropped	0	0
Observation mode	POINTING	POINTING	On-chip summing requested	N	N
[deg] Pointing RA	77.126729	77.19260988551342	Subarray requested	NONE	NONE
[deg] Pointing Dec	-68.755974	-68.76903408582272	Alternating exposures requested	N	N
[deg] Pointing Roll	300.291030	300.5090764128267	[s] Primary exposure time	0.000000	3.2
[mm] SIM focus pos	-0.684267	-0.6828225247311905			
[mm] SIM defocus	0	0.001444936568705701			
[mm] SIM translation stage pos	-190.132523	-190.1400660498719			
[mm] SIM translation stage offset	0	0.00754346686406393			
[s] Observation start time (MET)	160970700.184000	160968649.92639			
Observation start date	2003-02-07T02:03:56	2003-02-07T01:30:49			
[s] Observation end time (MET)	161001000.184000	161001890.16529			
Observation end date	2003-02-07T10:28:56	2003-02-07T10:44:50			
Read mode	TIMED	TIMED			

2.3 Aspect



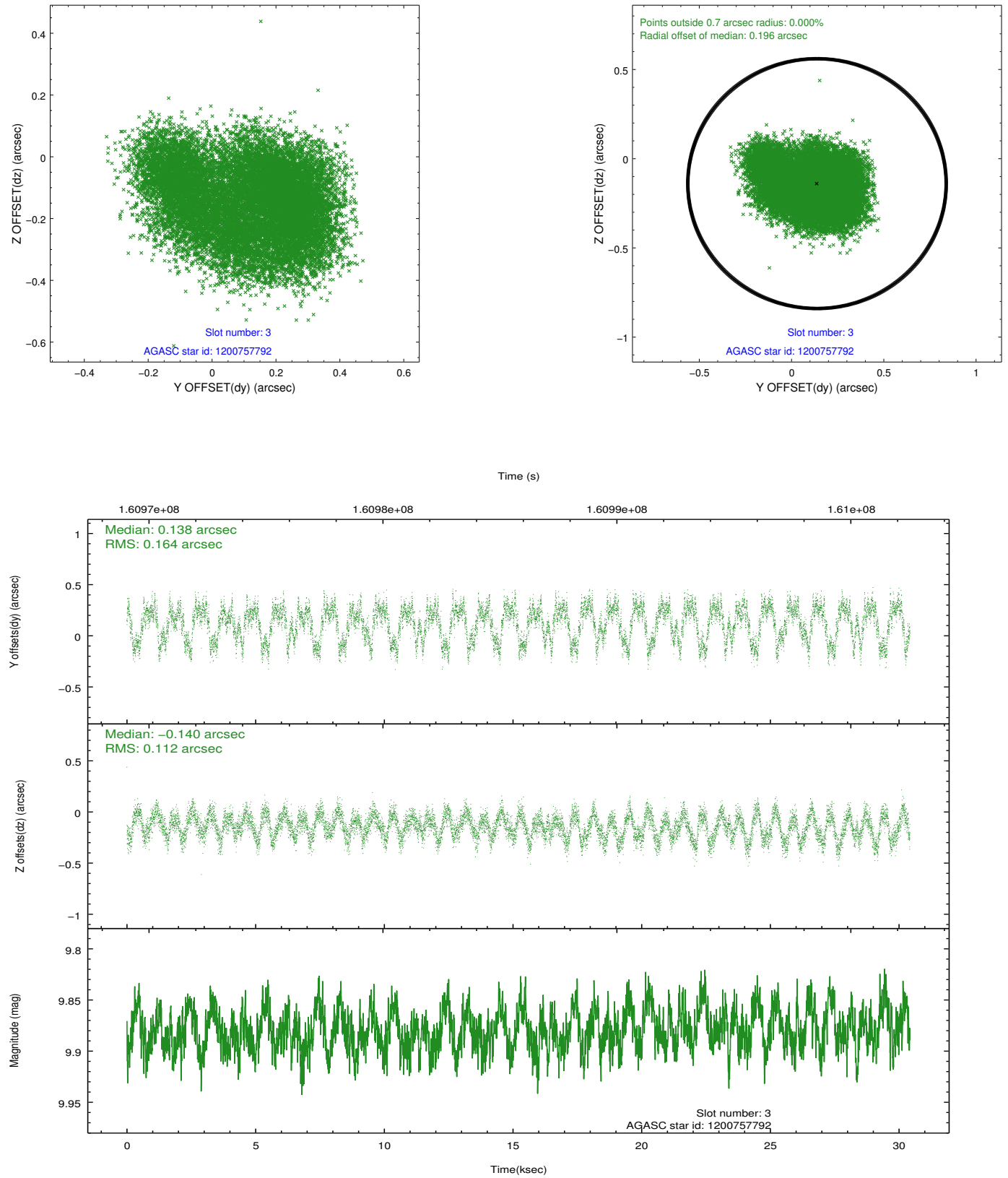


Slot Statistics

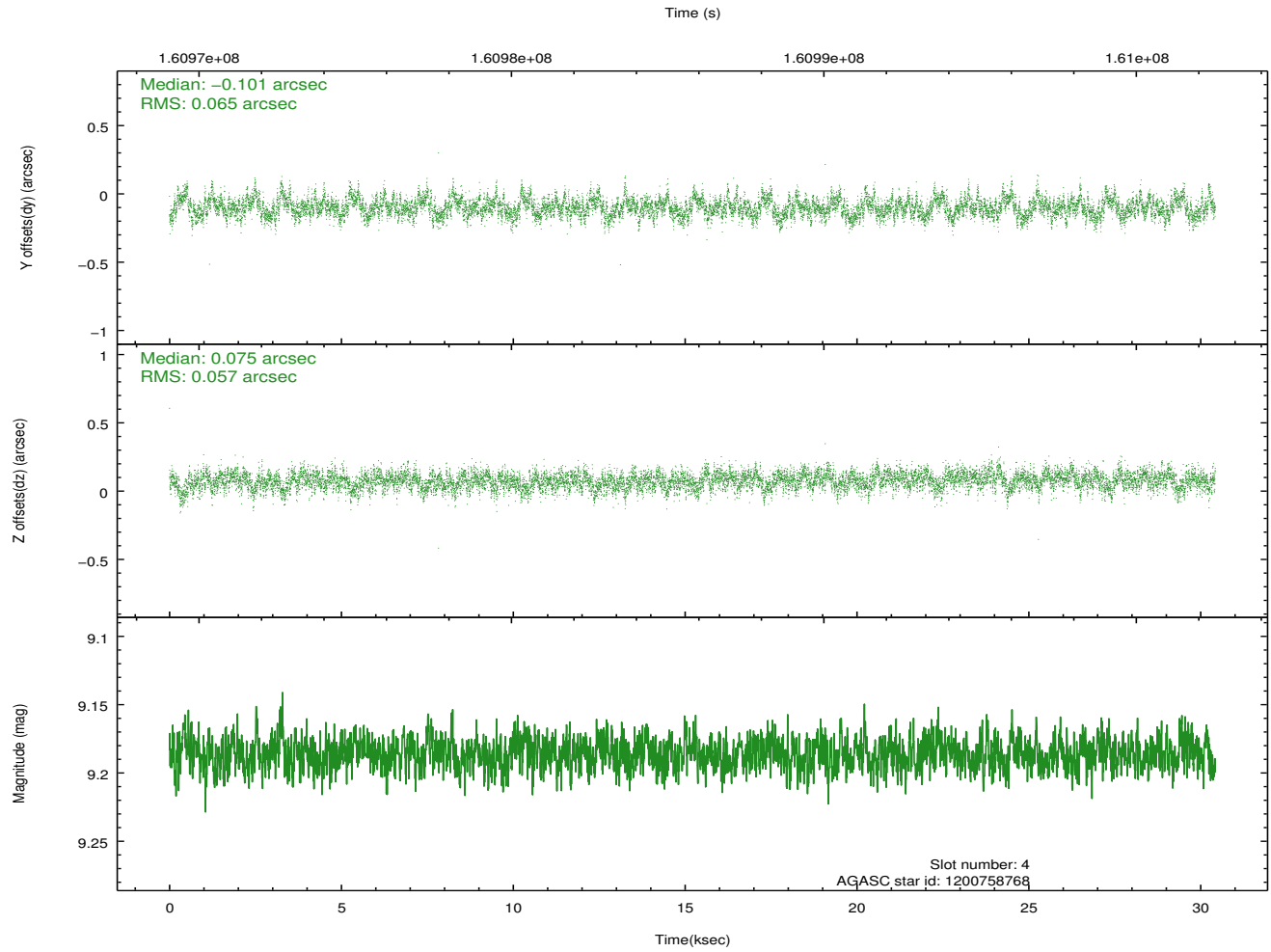
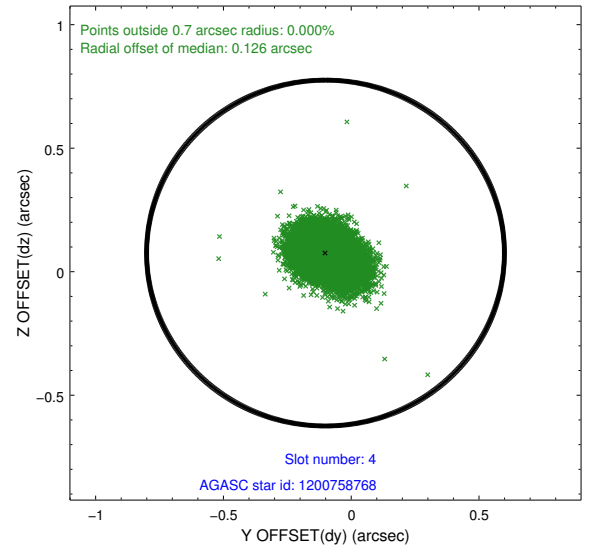
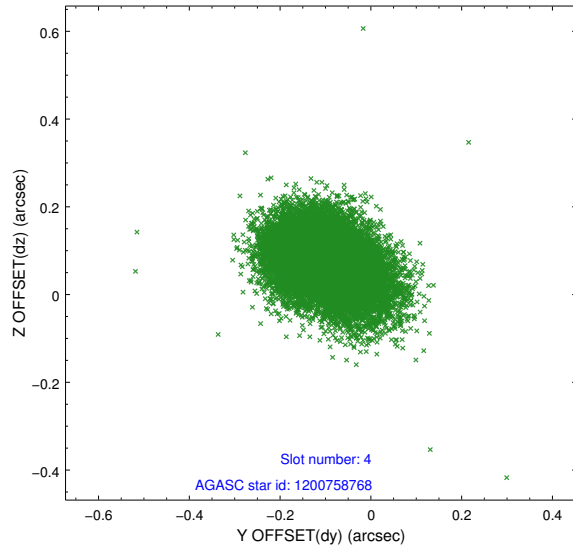
slot	status	id	mag	n_pts	med_dy	med_dz	dr1	dr2	ra	dec	mean_y	mean_z
0	FID	ACIS-S-2	7.11	7421	-0.027	-0.005	0.014	0.020	0.000000	0.000000	-754.83	-1728.48
1	FID	ACIS-S-4	7.20	7421	-0.017	0.014	0.017	0.023	0.000000	0.000000	2158.42	179.96
2	FID	ACIS-S-5	7.24	7421	0.011	-0.000	0.010	0.019	0.000000	0.000000	-1807.55	173.69
3	GUIDE	1200757792	9.88	14831	0.138	-0.140	0.217	0.333	77.665138	-68.247752	-1214.55	1541.39
4	GUIDE	1200758768	9.19	14834	-0.101	0.075	0.090	0.152	76.222937	-69.168878	707.65	-1752.69
5	GUIDE	1200758808	9.20	14773	0.076	0.037	0.084	0.132	75.766621	-68.511245	-1647.52	-1114.27
6	GUIDE	1200760024	8.48	14837	-0.061	0.073	0.081	0.127	77.625244	-69.320410	2076.72	-478.53
7	GUIDE	1200888464	9.46	14828	-0.029	-0.035	0.095	0.159	78.430687	-69.005633	1640.06	990.09

2.4 Star Slots

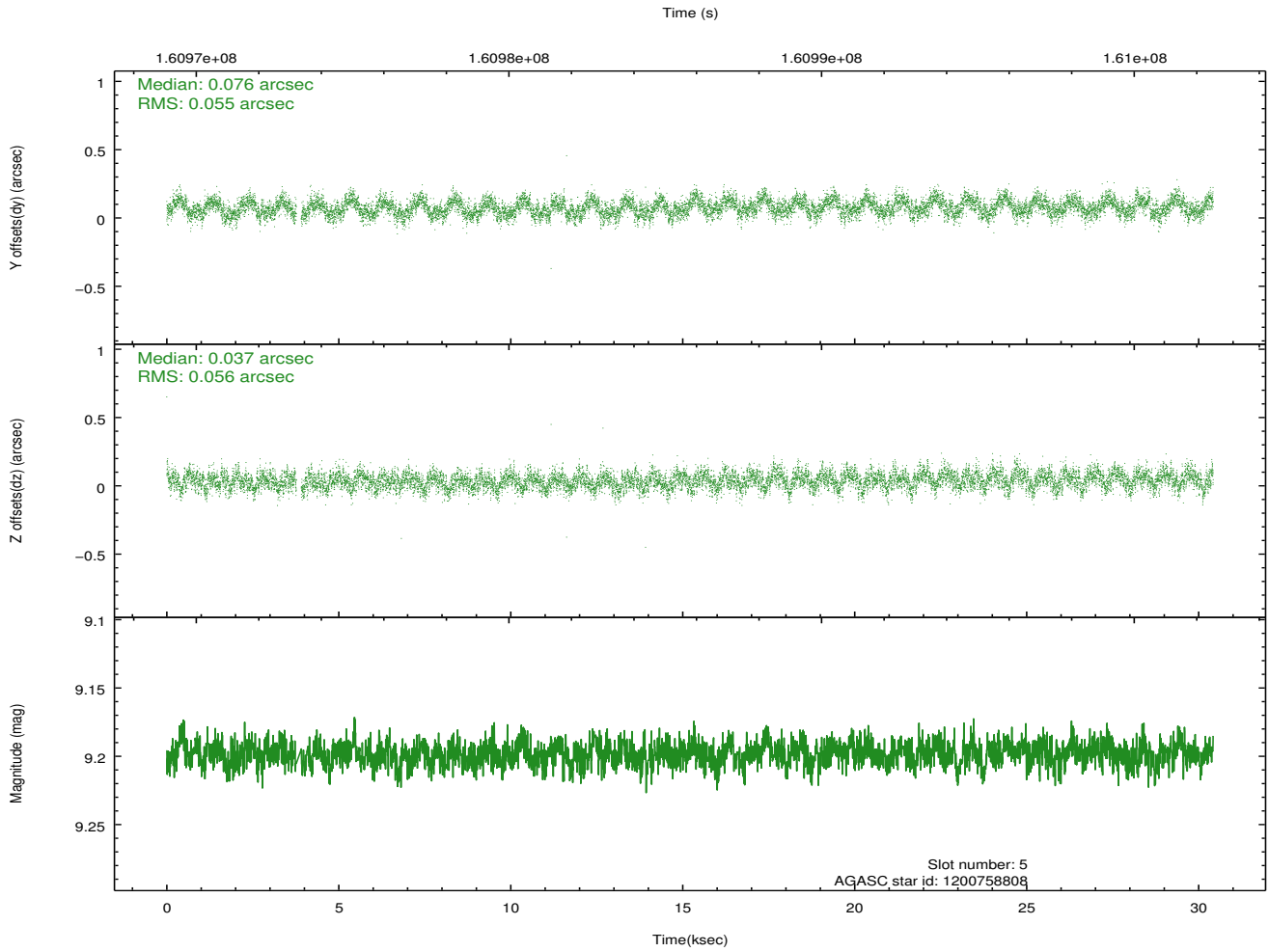
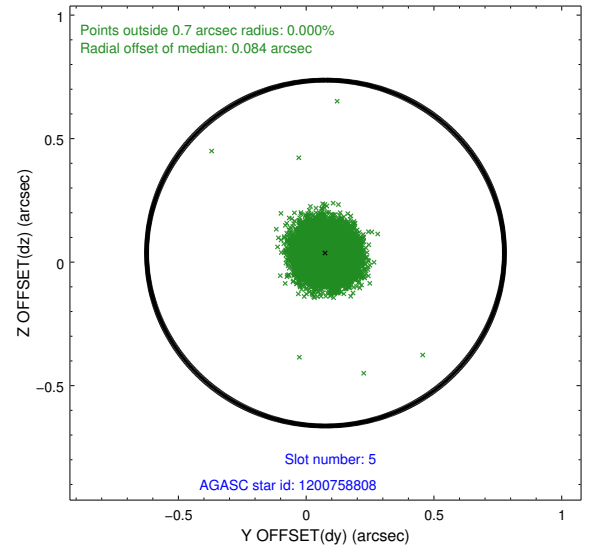
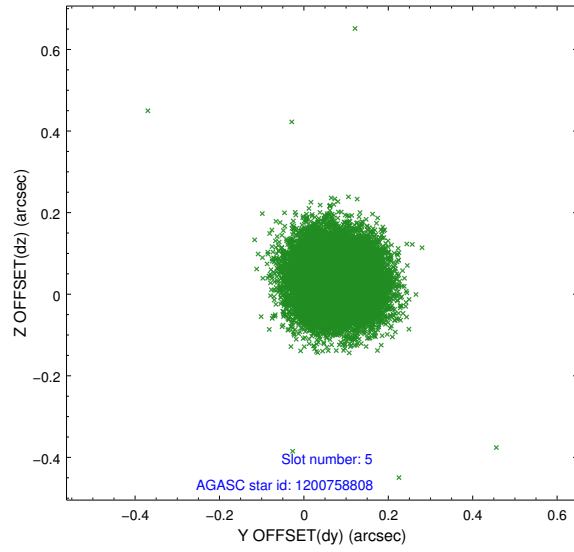
2.4.1 Slot 3



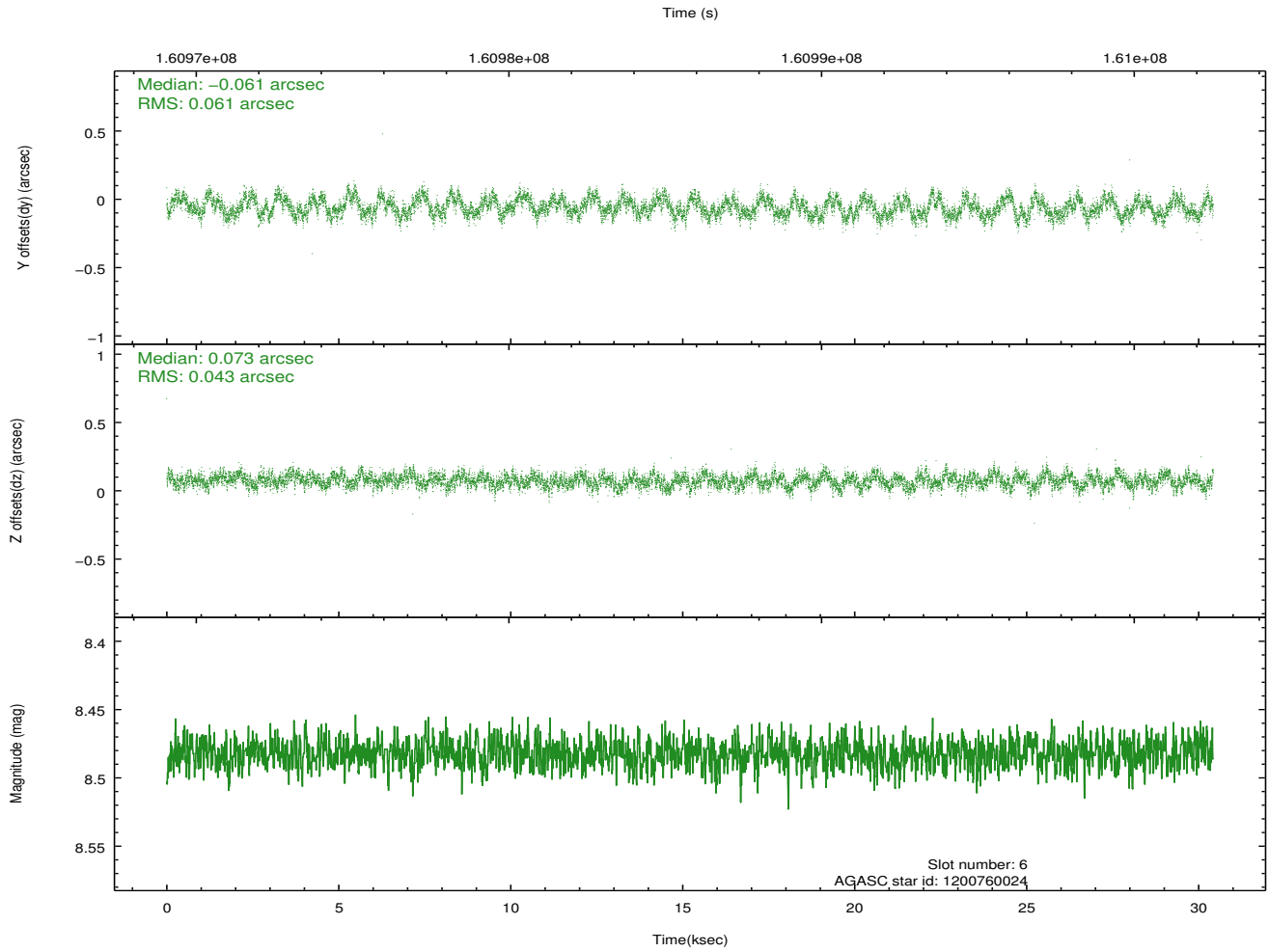
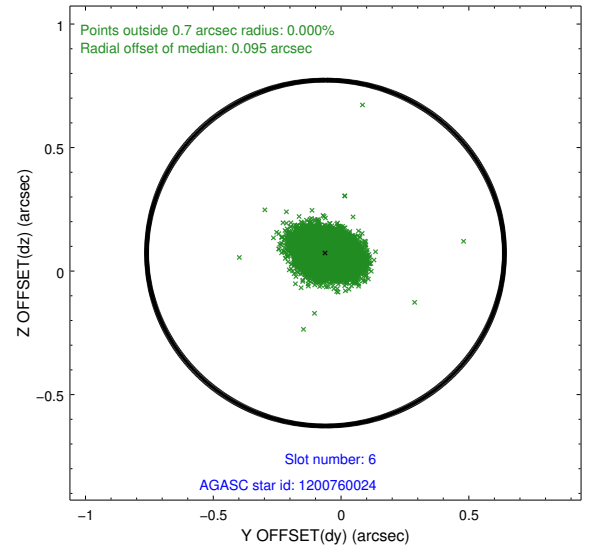
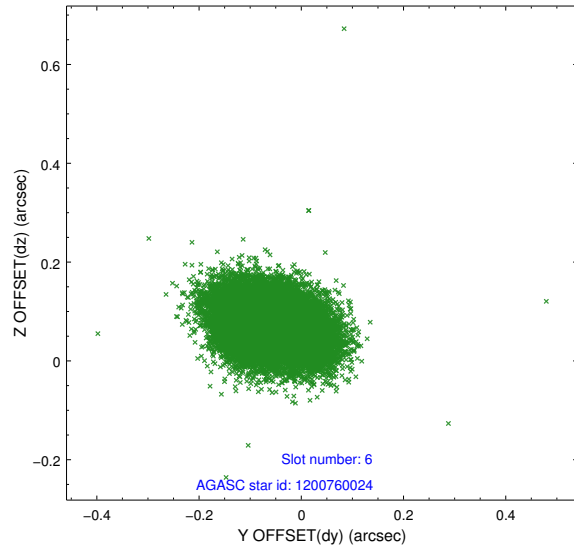
2.4.2 Slot 4



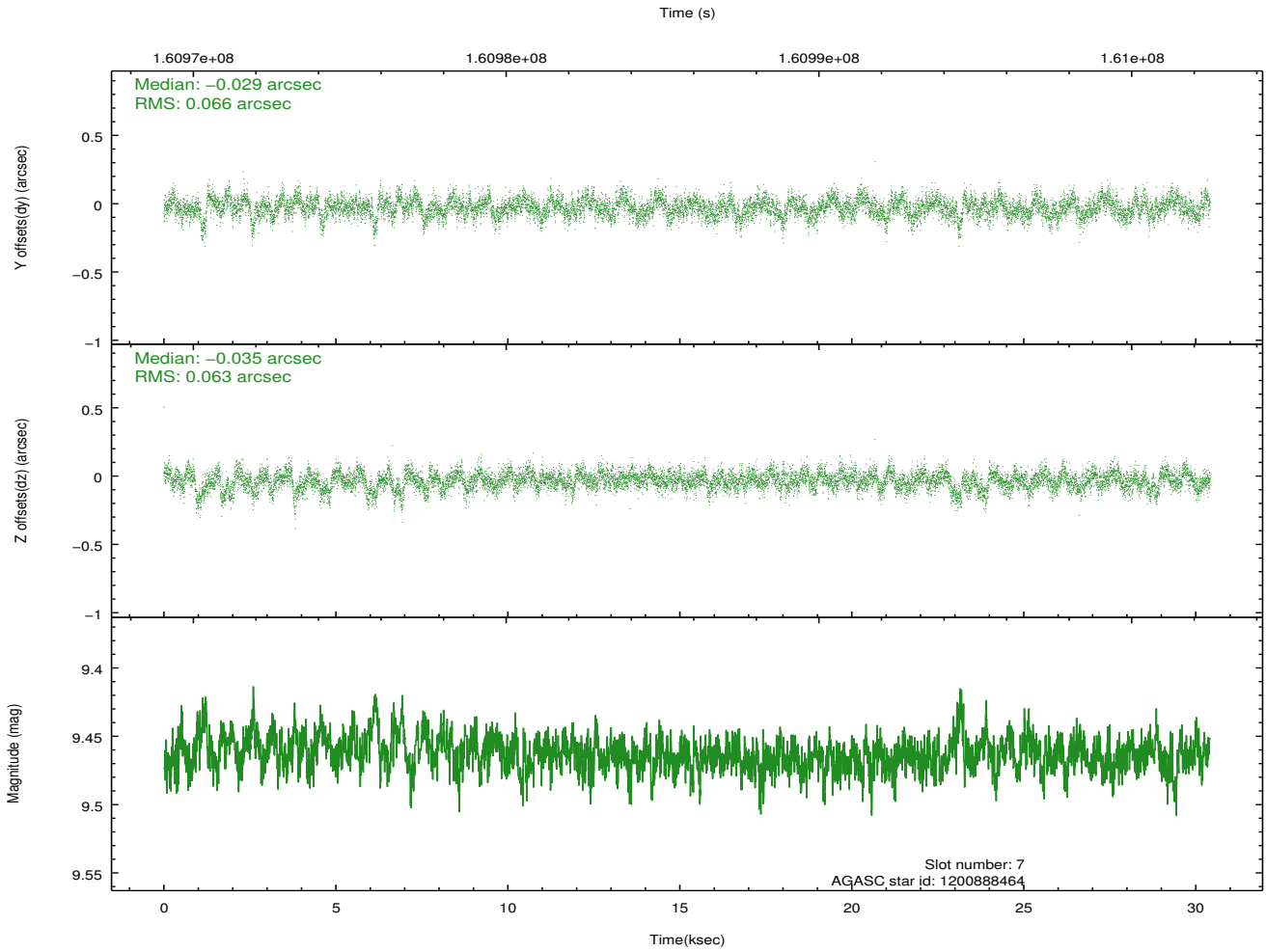
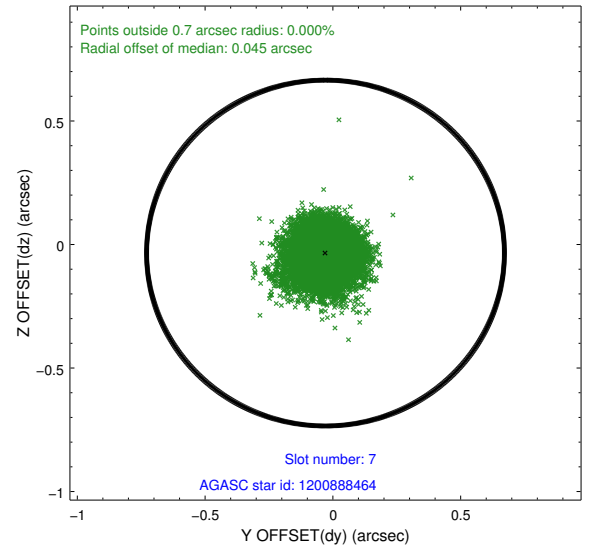
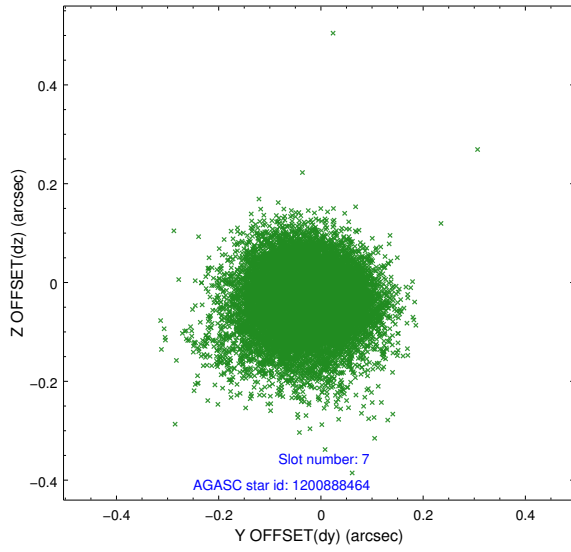
2.4.3 Slot 5



2.4.4 Slot 6

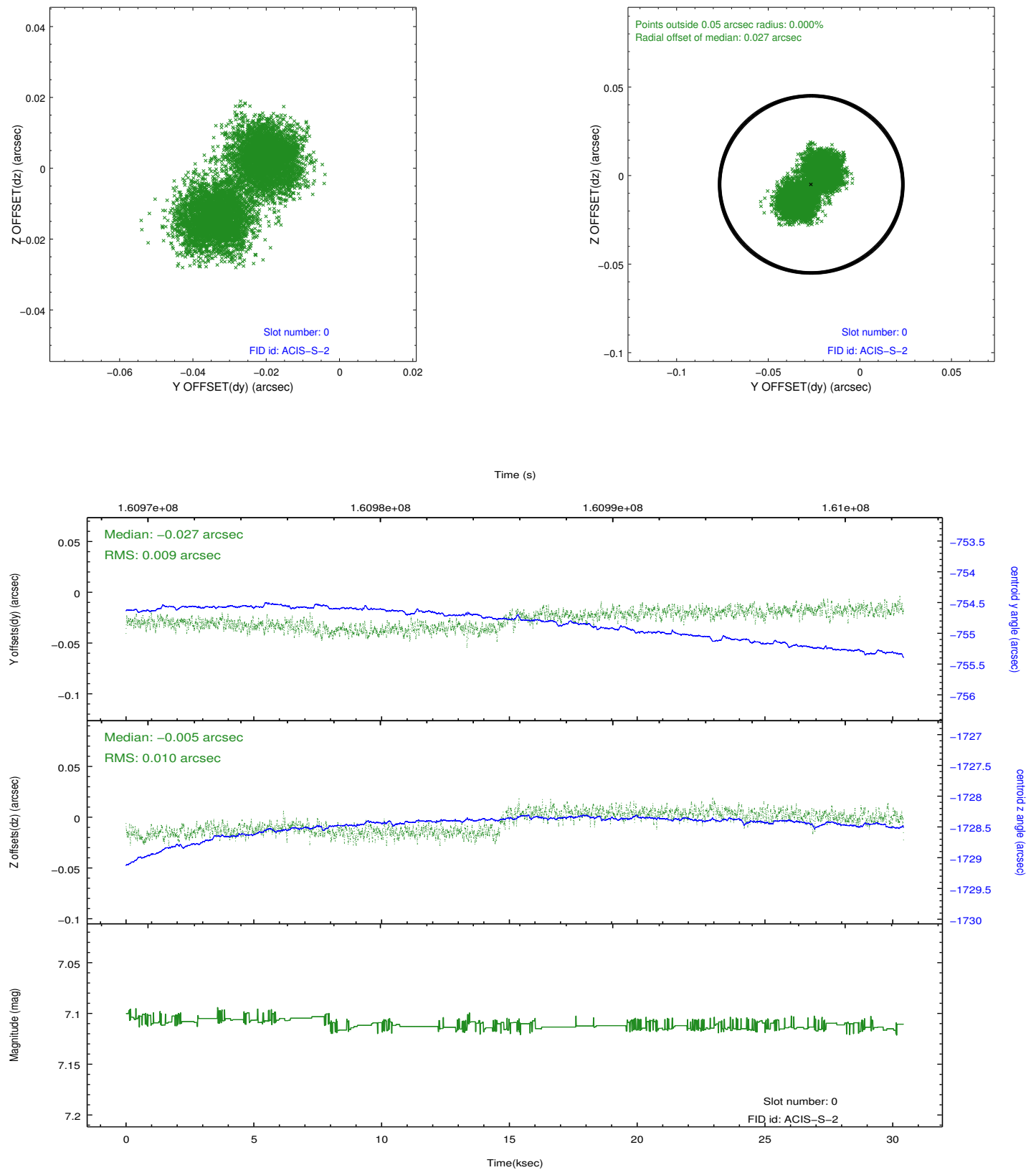


2.4.5 Slot 7

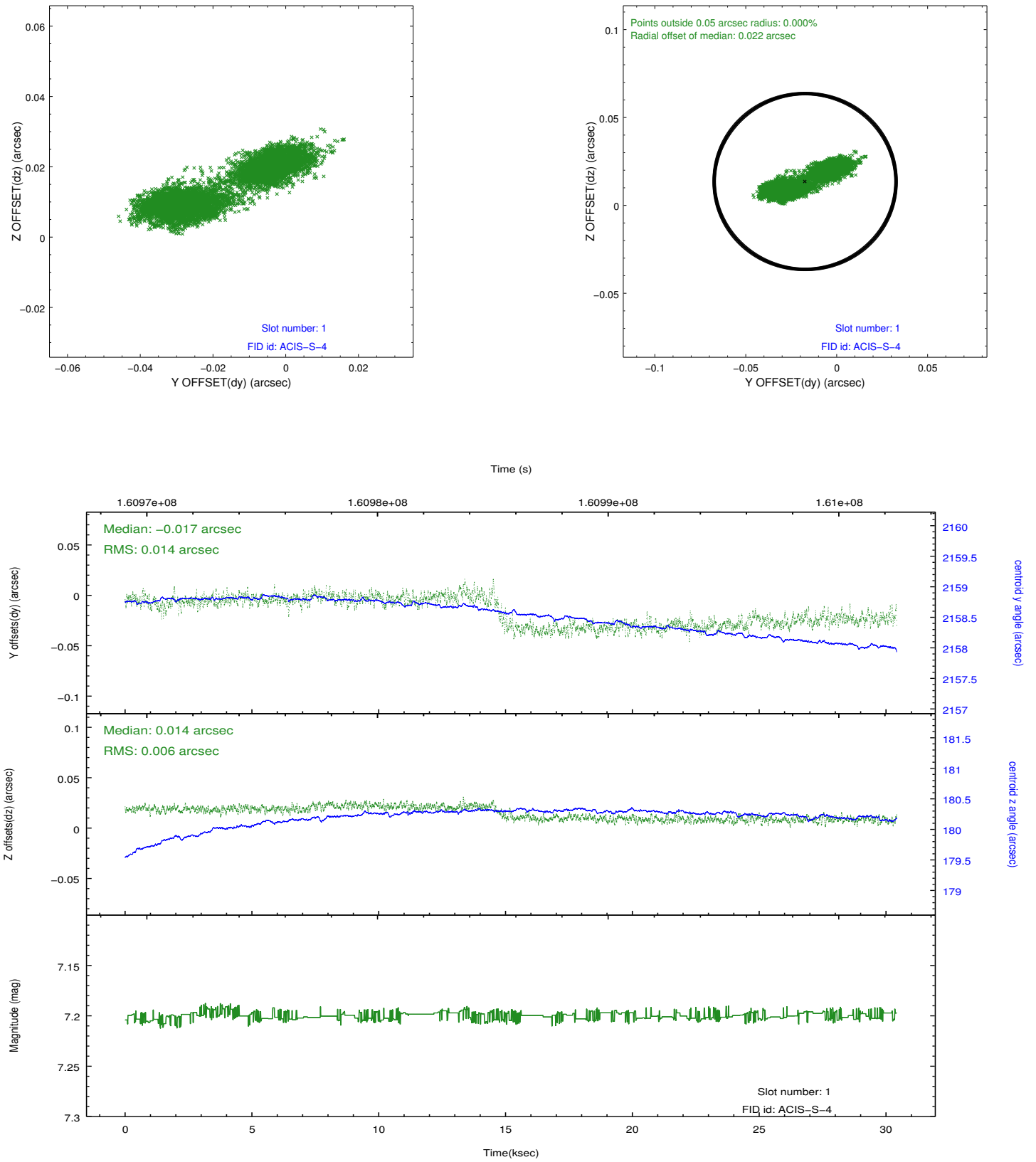


2.5 FID Slots

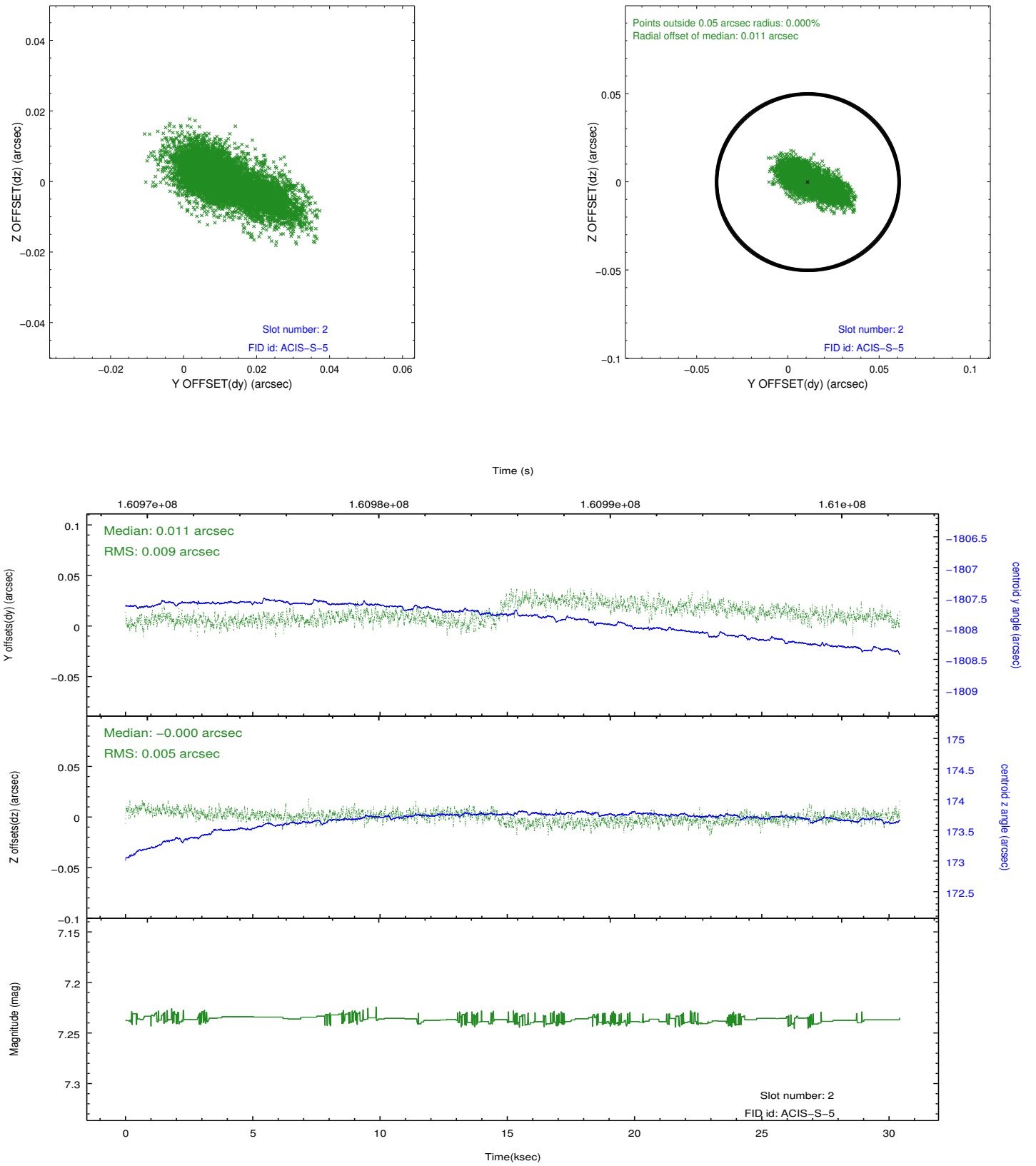
2.5.1 Slot 0



2.5.2 Slot 1



2.5.3 Slot 2



A Summary

A.1 Status

V&V Scientist	Jen Lauer
V&V Date (YYYY-MM-DD)	2012.11.05
V&V Edition	1
V&V Disposition and Status	OK
V&V Charge Time	30.058

A.2 Comments