

V&V Reference Report

L2 ASCDS Version : 7.6.8

Observation 3650 - L2 Version 001
Chandra X-Ray Center

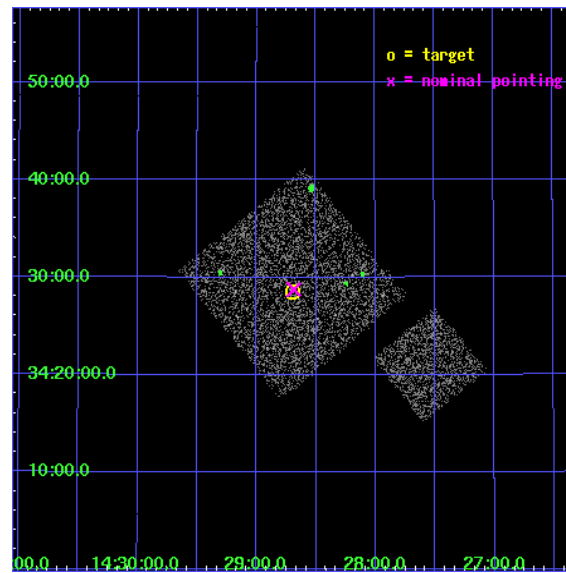
L2 Processing Date : Jul 30 2006

Contents

1	Front	2
2	OBI	3
2.1	OBI	3
2.1.1	Images	3
2.1.2	Bias	3
2.1.3	Parameters	4
2.1.4	Events	4
2.2	Compared Parameters	5
2.3	Aspect	6
2.4	Star Slots	9
2.4.1	Slot 3	9
2.4.2	Slot 4	10
2.4.3	Slot 5	11
2.4.4	Slot 6	12
2.4.5	Slot 7	13
2.5	FID Slots	14
2.5.1	Slot 0	14
2.5.2	Slot 1	15
2.5.3	Slot 2	16
3	Point Sources	17
A	Summary	18
A.1	Status	18
A.2	Comments	18

1 Front

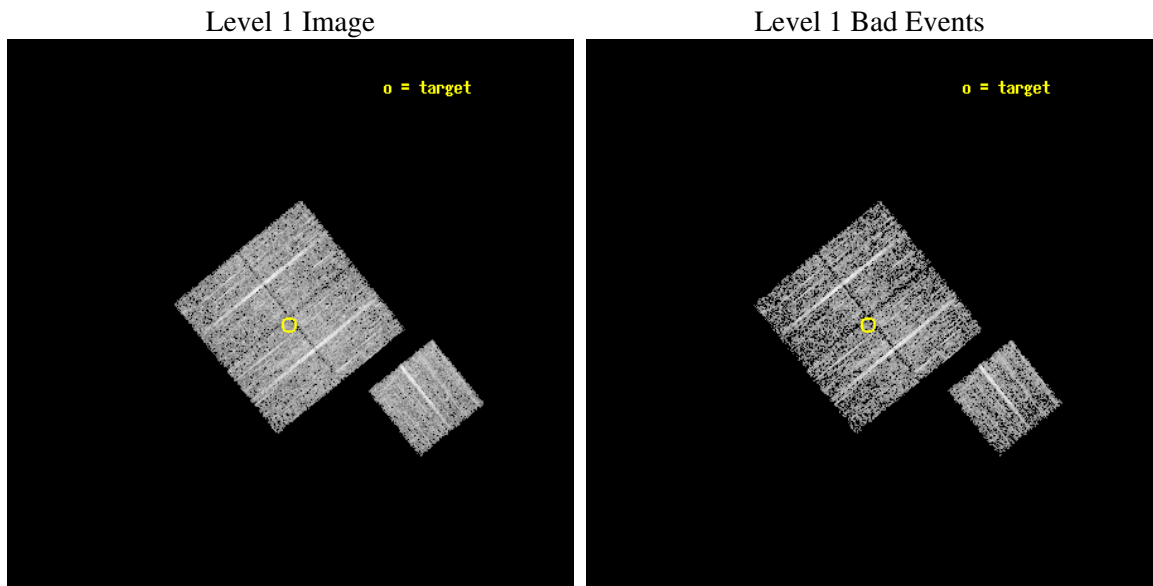
seq_num	900250
obs_id	3650
title	CHANDRA LARGE SCALE SURVEY OF THE NOAO BOOTES DEEP FIELD
observer	Dr. Stephen Murray
object	NOAO FIELD F21
dtcycle	0
cycle	P
ra_targ	217.17418
dec_targ	34.475388
ra_nom	217.17150260627
dec_nom	34.479441260877
roll_nom	141.01021626419
revision	2
ontime	4578.6999911964
livetime	4518.8759050215
ontime0	4578.6999911964
ontime1	4578.6999911964
ontime2	4578.6999911964
ontime3	4578.6999911964
ontime6	4578.6999911964
l2events	9350



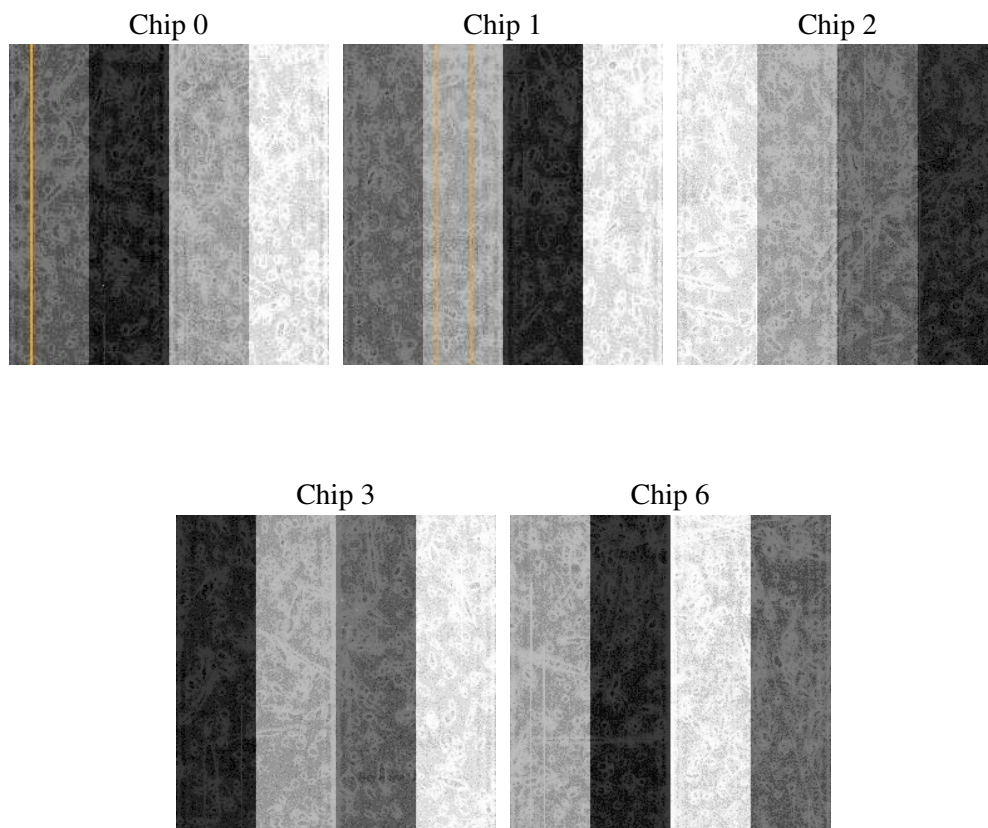
2 OBI

2.1 OBI

2.1.1 Images



2.1.2 Bias



2.1.3 Parameters

obi_num	1
ascdsver	7.6.8
caldsver	3.2.2
date	2006-07-30T07:23:25
revision	2

sched_exp_time	4800.000000
ontime	4582.725453347
ontime0	4582.725453347
ontime1	4582.725453347
ontime2	4582.725453347
ontime3	4582.725453347
ontime6	4582.725453347
llevents	112851

2.1.4 Events

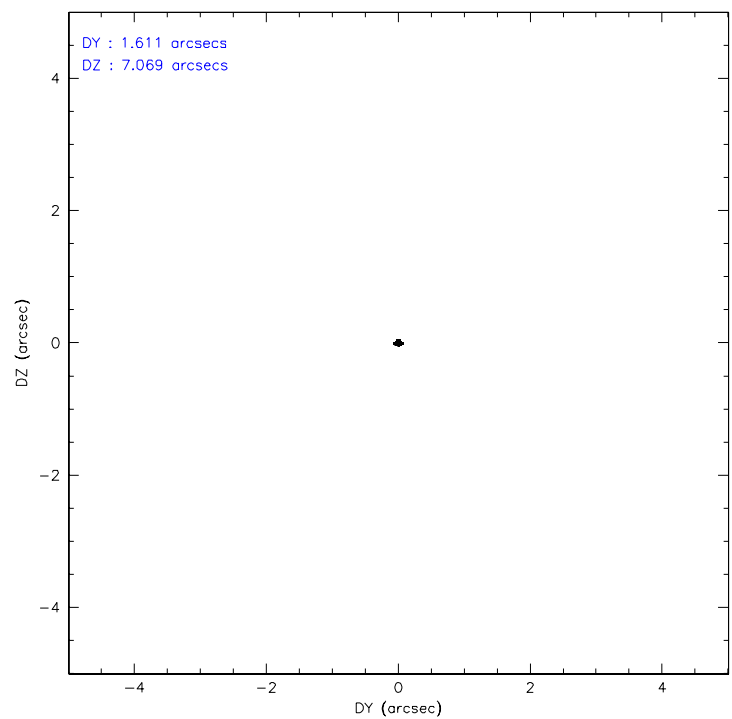
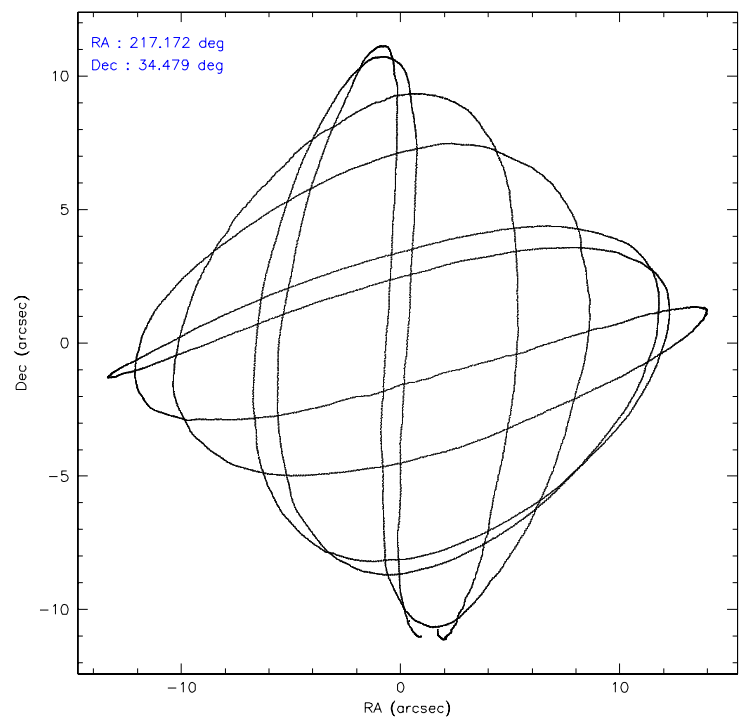
	ccd 0	ccd 1	ccd 2	ccd 3	ccd 6
level 1 events	21911	20645	24637	22389	23269
rejected events	19651	18345	22392	20213	20934
rejected %	89%	88%	90%	90%	89%

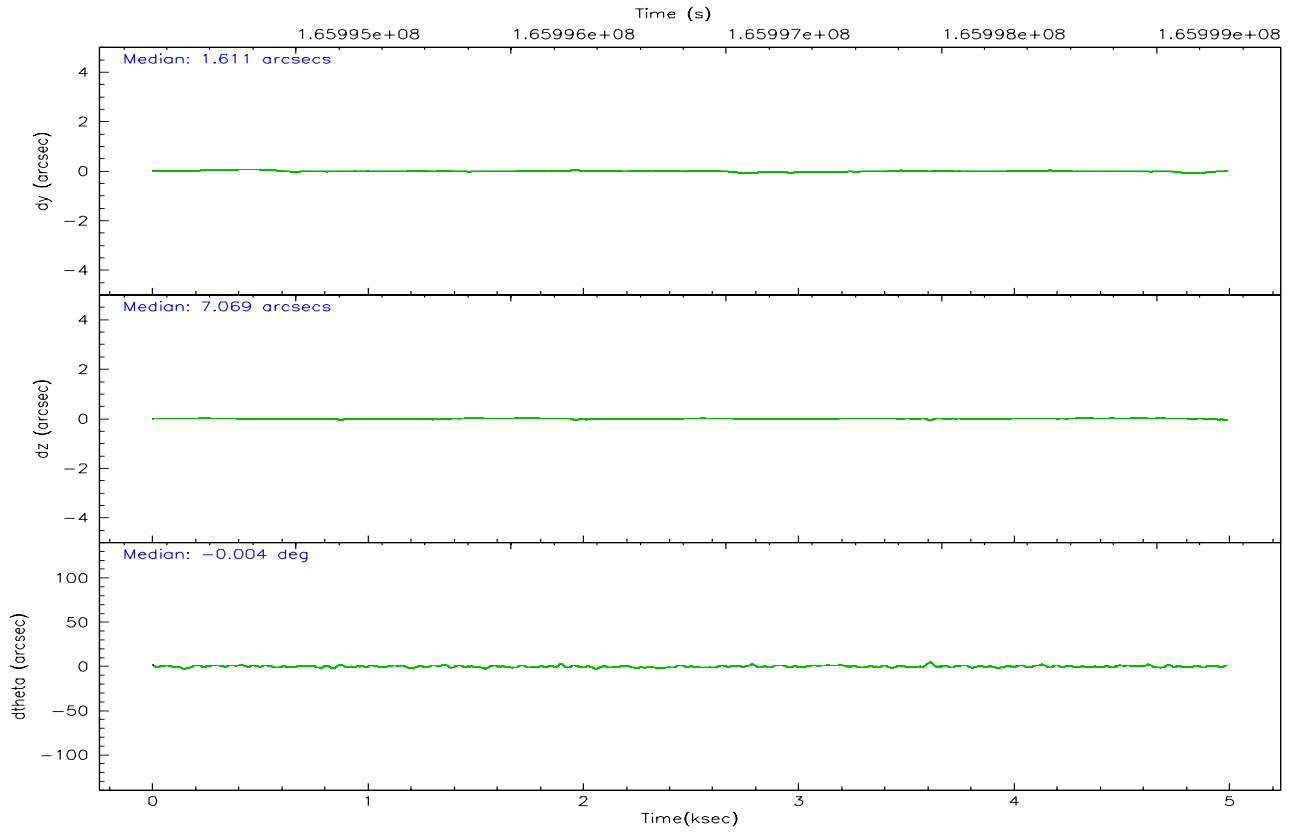
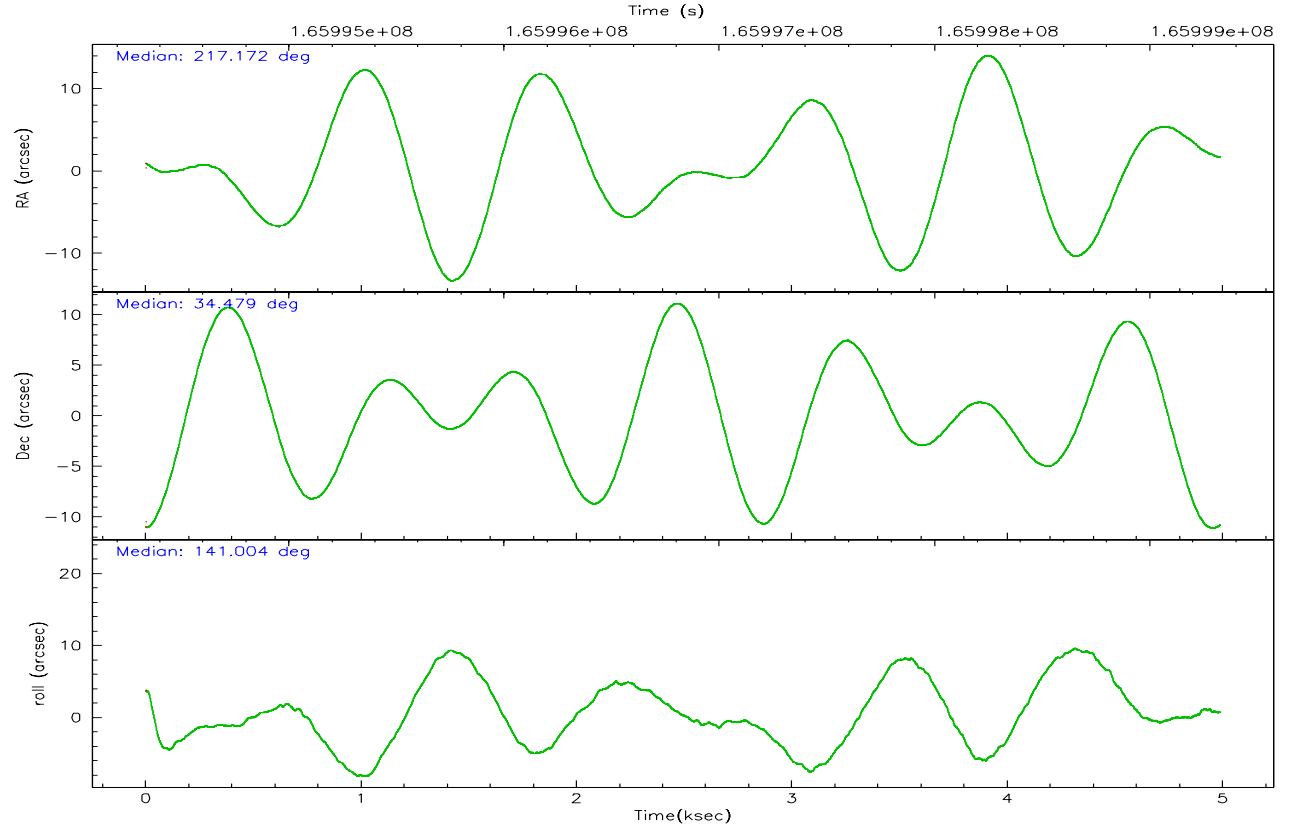
	ccd 0	ccd 1	ccd 2	ccd 3	ccd 6
grade 0 events	838	851	890	813	851
	3%	4%	3%	3%	3%
grade 1 events	10	8	12	15	13
	0%	0%	0%	0%	0%
grade 2 events	497	468	484	449	485
	2%	2%	1%	2%	2%
grade 3 events	277	304	267	257	297
	1%	1%	1%	1%	1%
grade 4 events	261	265	253	234	251
	1%	1%	1%	1%	1%
grade 5 events	653	682	626	788	796
	2%	3%	2%	3%	3%
grade 6 events	388	412	358	423	452
	1%	1%	1%	1%	1%
grade 7 events	18987	17655	21747	19410	20124
	86%	85%	88%	86%	86%

2.2 Compared Parameters

Parameter	Planned	Actual	Parameter	Planned	Actual
Instrument	ACIS	ACIS	Obspar format version number	6	6
Detector	ACIS-01236	ACIS-01236	Obspar file type	PREDICTED	ACTUAL
Grating	NONE	NONE	Obspar update status	NONE	UPDATED
Data mode	VFAINT	VFAINT	On-chip summing requested	N	N
Observation mode	POINTING	POINTING	Subarray requested	NONE	NONE
Pointing RA	217.204364	217.1715026062696	Alternating exposures requested	N	N
Pointing Dec	34.475312	34.47944126087673	Primary exposure time	0.000000	3.1
Pointing Roll	140.782914	141.0102162641907			
SIM focus pos (mm)	-0.782348	-0.7809083437167272			
SIM defocus (mm)	0	0.001439871863259334			
SIM translation stage pos (mm)	-233.592463	-233.5874344608287			
SIM translation stage offset (mm)	0	-0.005018542100998502			
Observation start time	165994525.184000	165994149.80041			
Observation start date	2003-04-06T05:34:21	2003-04-06T05:29:09			
Observation end time	165999325.184000	165999459.30063			
Observation end date	2003-04-06T06:54:21	2003-04-06T06:57:39			
Read mode	TIMED	TIMED			

2.3 Aspect



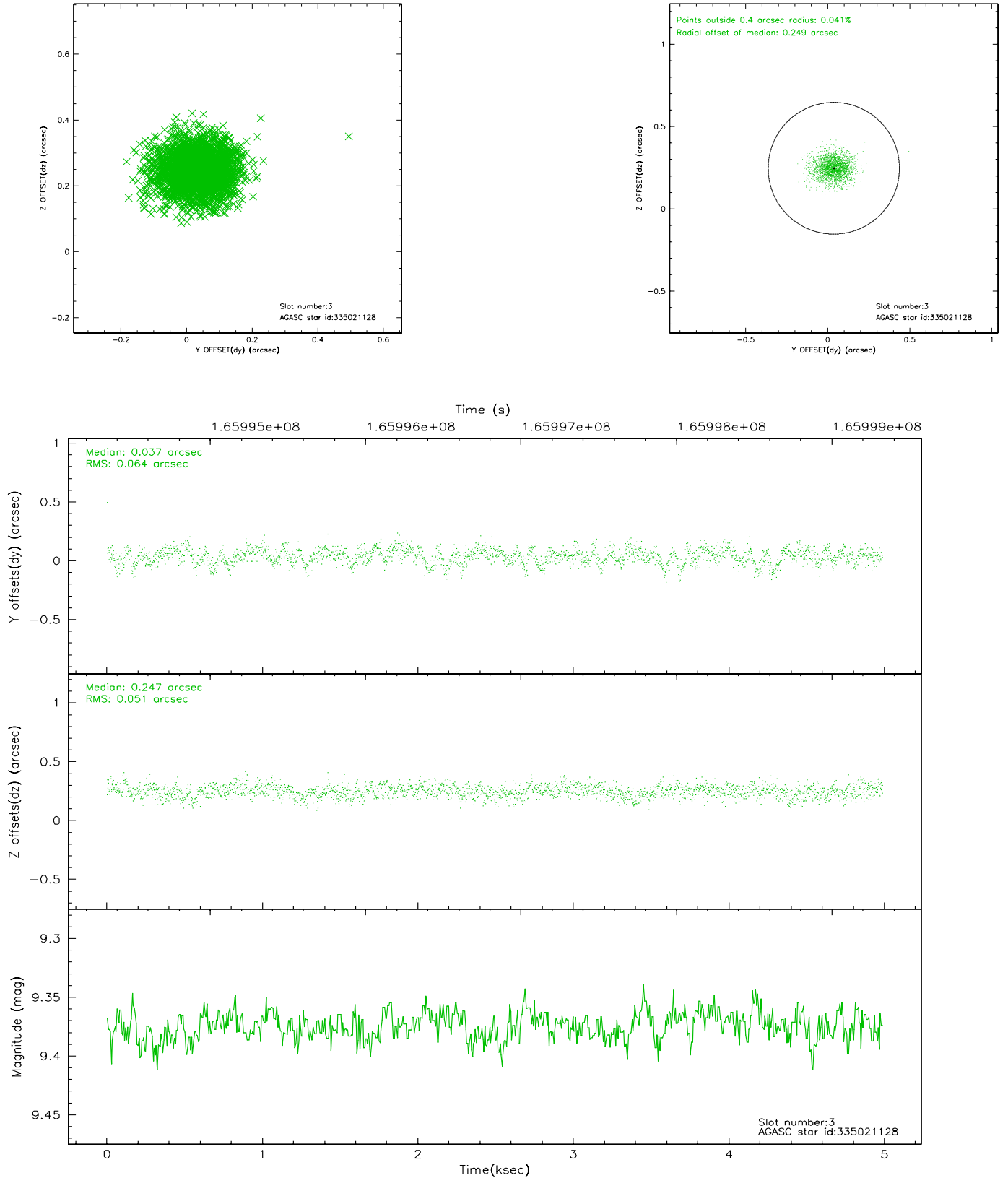


Slot Statistics

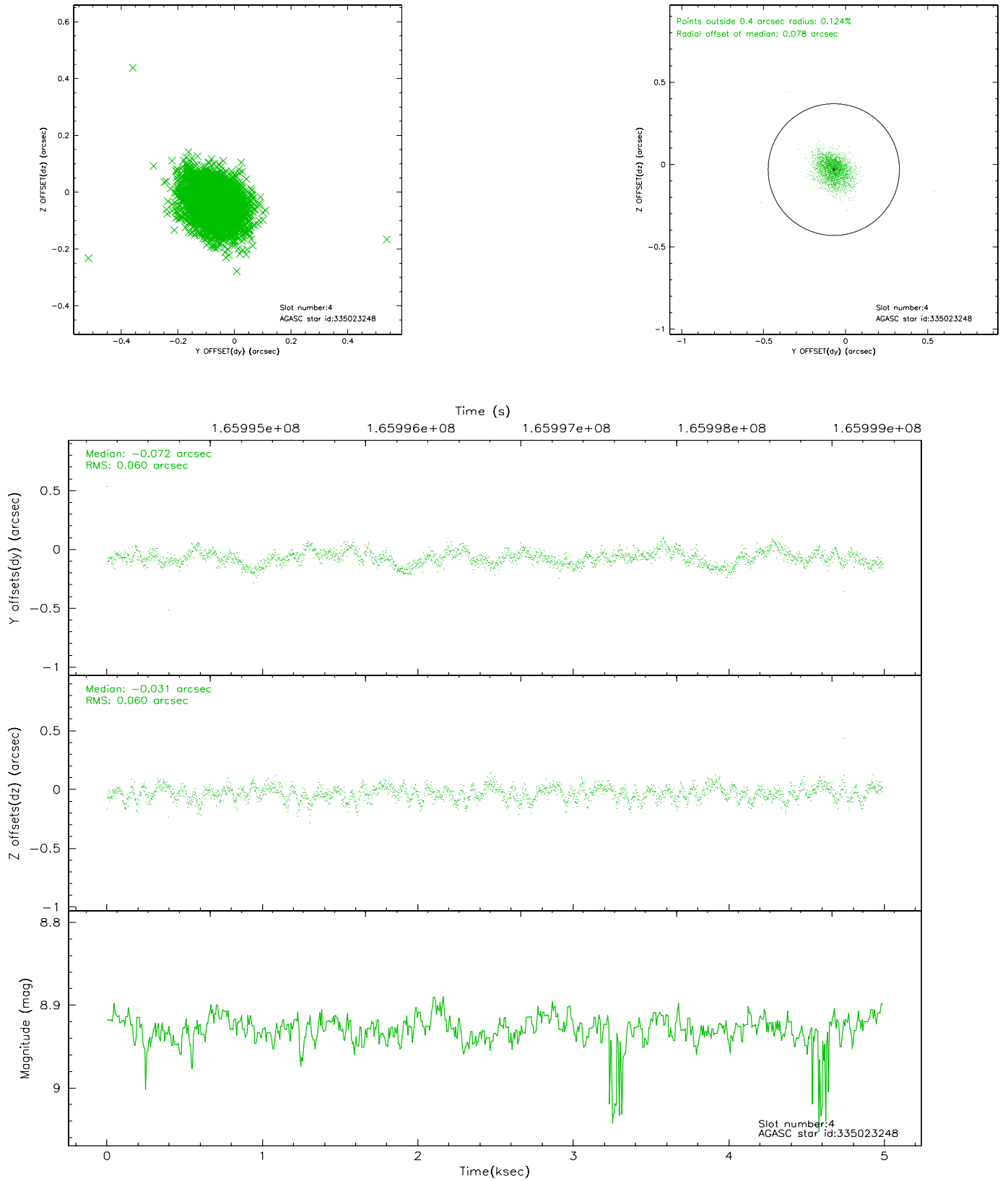
slot	status	id	mag	n_pts	med_dy	med_dz	dr1	dr2	ra	dec	mean_y	mean_z
0	FID	ACIS-I-1	7.25	1217	-0.089	0.009	0.009	0.014	0.000000	0.000000	938.16	-830.43
1	FID	ACIS-I-2	7.15	1217	-0.030	-0.010	0.006	0.010	0.000000	0.000000	-755.18	-837.55
2	FID	ACIS-I-4	7.18	1217	0.021	0.067	0.006	0.010	0.000000	0.000000	2157.55	1068.86
3	GUIDE	335021128	9.38	2431	0.037	0.247	0.086	0.142	216.159551	34.422539	2293.98	2097.10
4	GUIDE	335023248	8.93	2428	-0.072	-0.031	0.088	0.144	217.634832	34.944512	86.93	-2113.03
5	GUIDE	335028696	9.17	2433	0.083	-0.074	0.087	0.136	217.260519	33.844112	-1566.54	1653.27
6	GUIDE	335030384	8.85	2434	-0.011	-0.232	0.071	0.114	216.806407	34.722197	1475.36	54.77
7	GUIDE	335417968	9.40	2433	-0.033	0.095	0.096	0.158	217.358149	35.055285	970.31	-1904.16

2.4 Star Slots

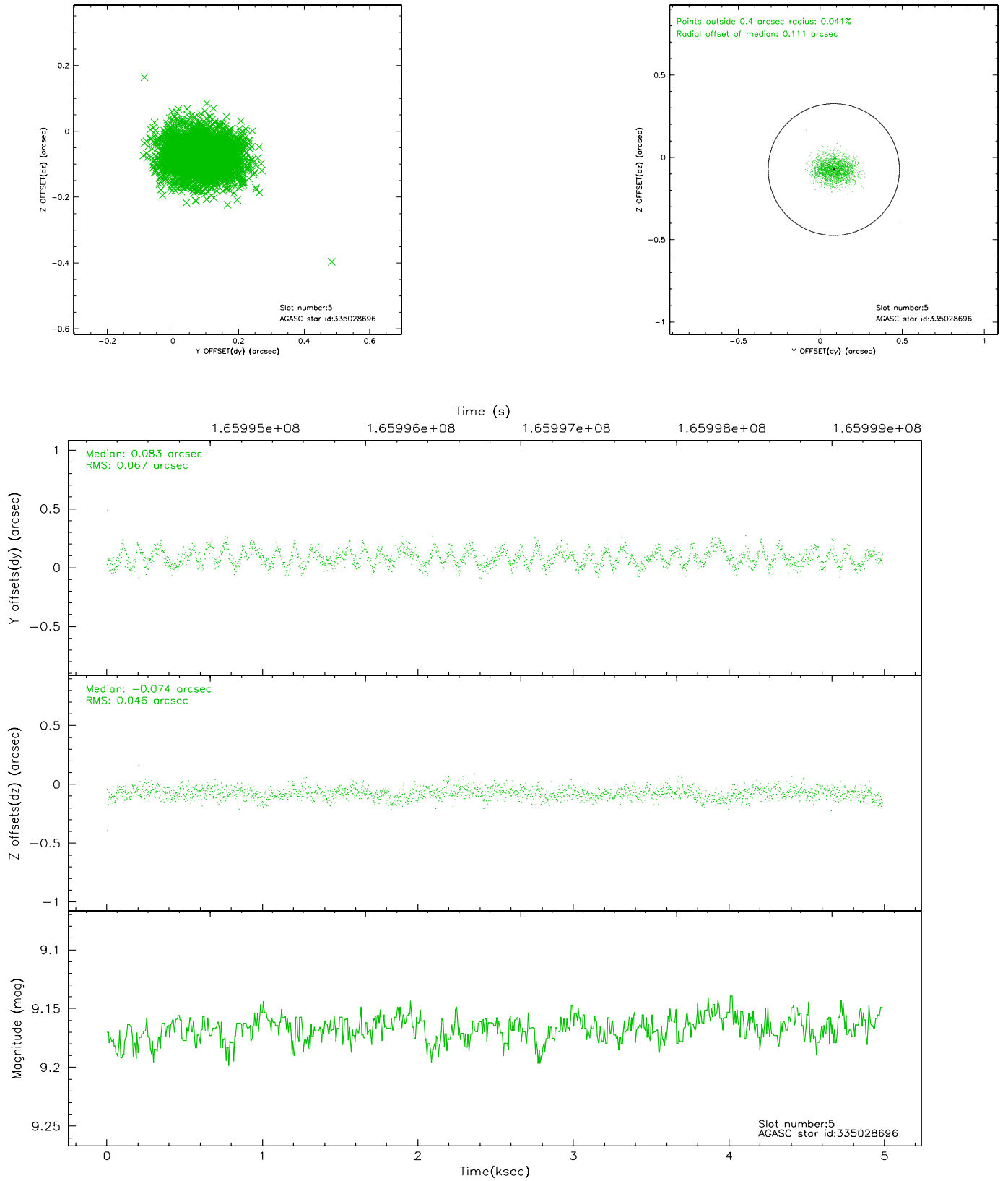
2.4.1 Slot 3



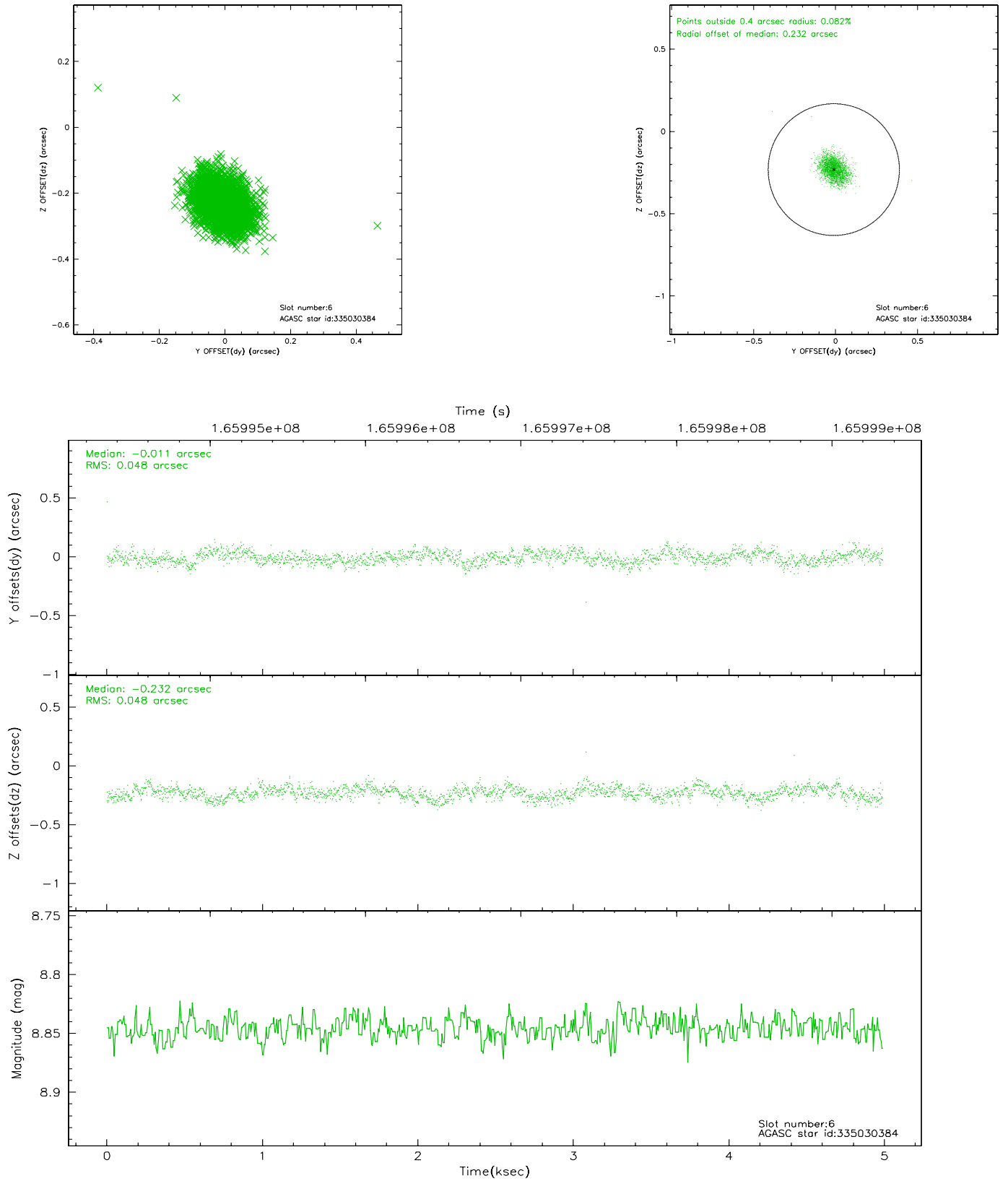
2.4.2 Slot 4



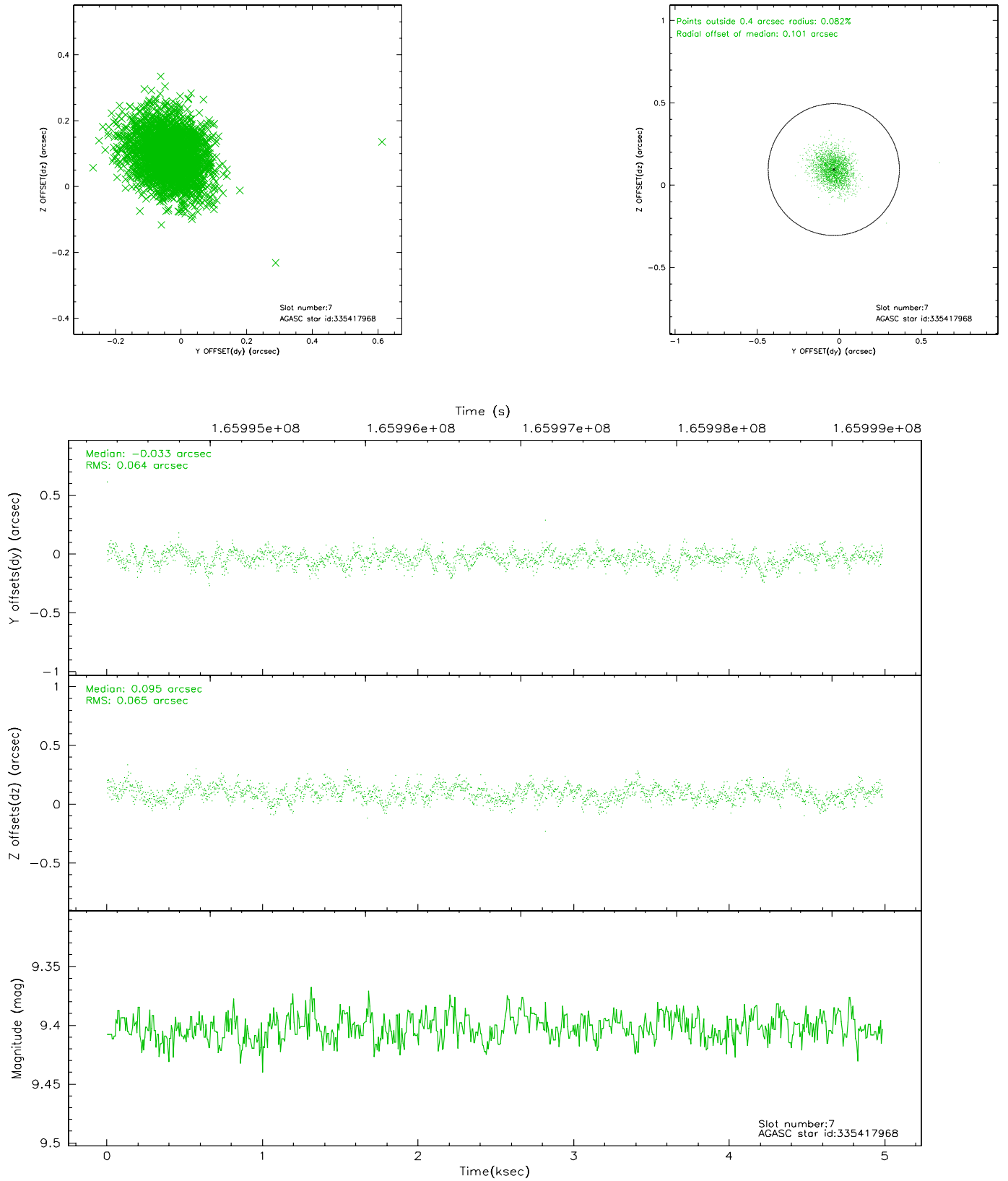
2.4.3 Slot 5



2.4.4 Slot 6

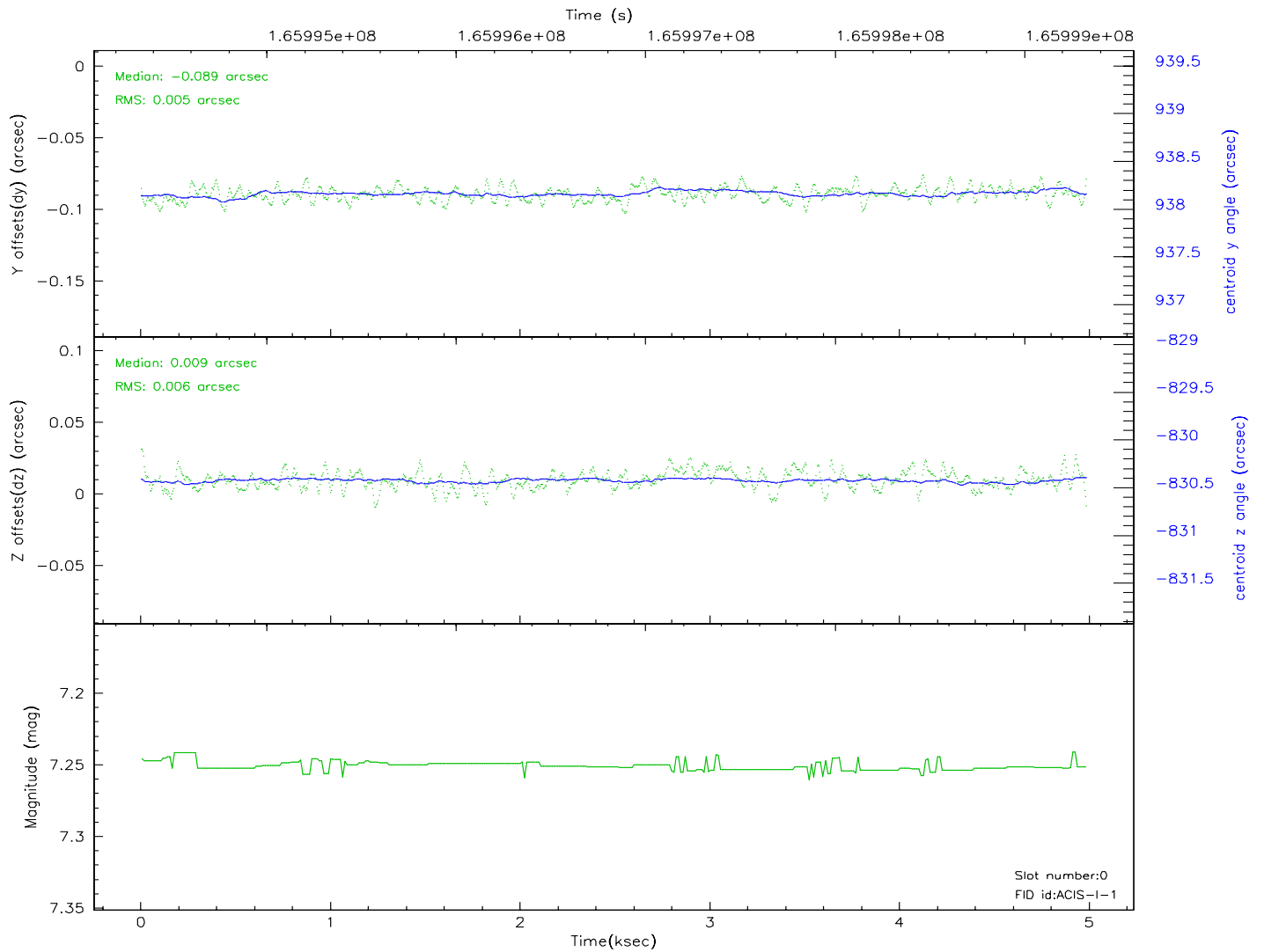
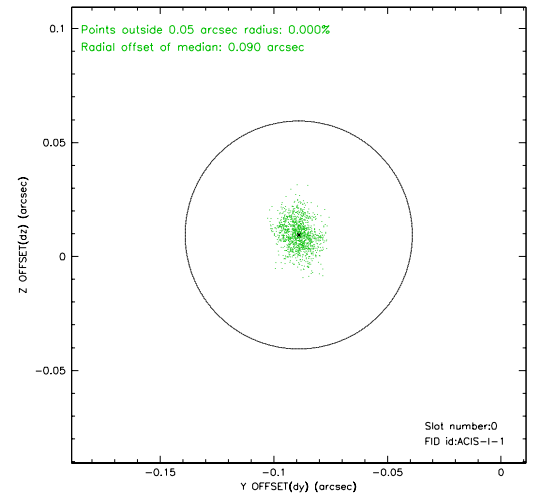
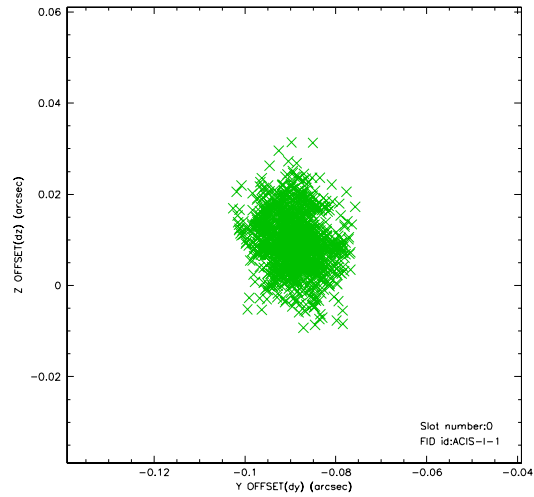


2.4.5 Slot 7

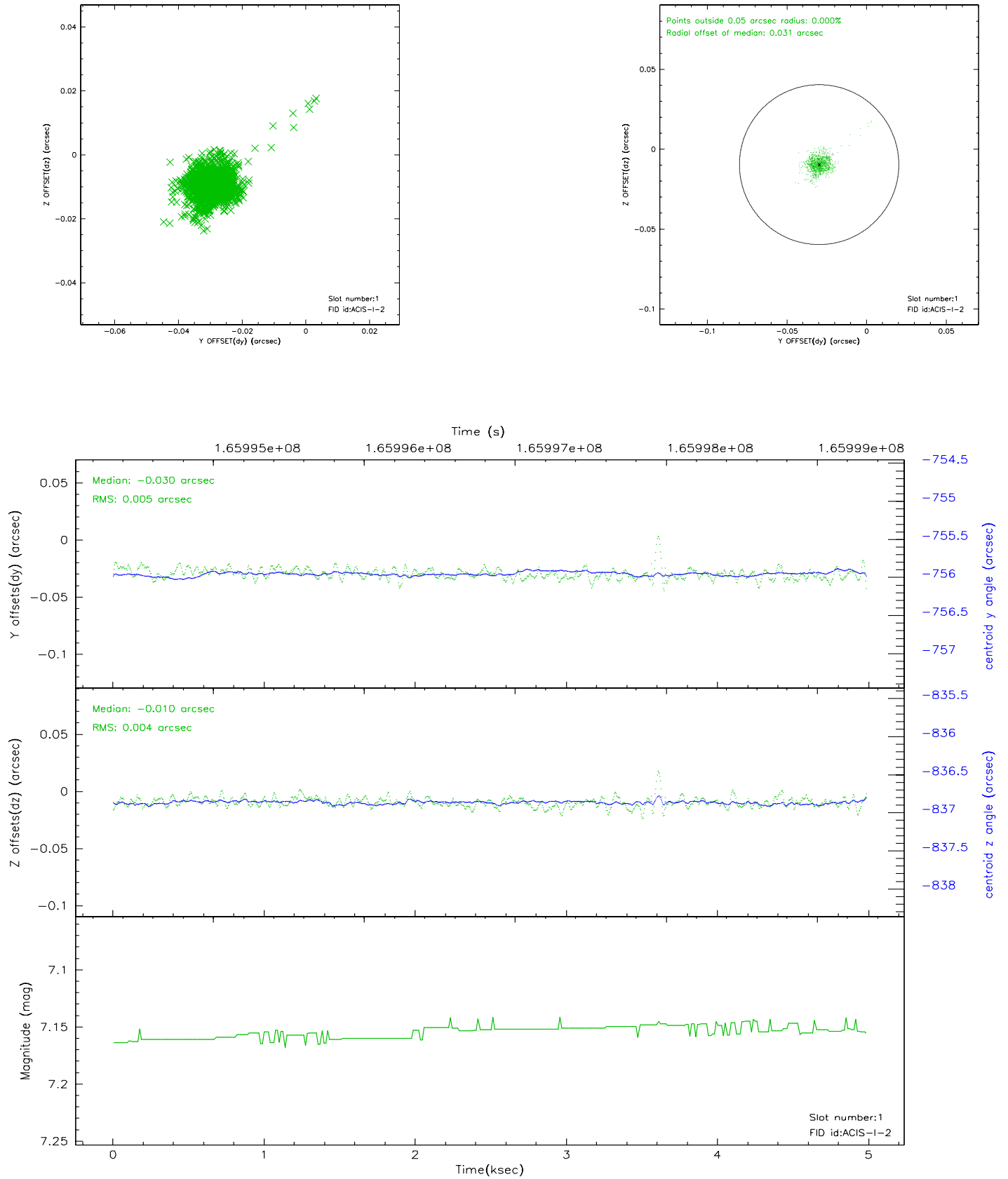


2.5 FID Slots

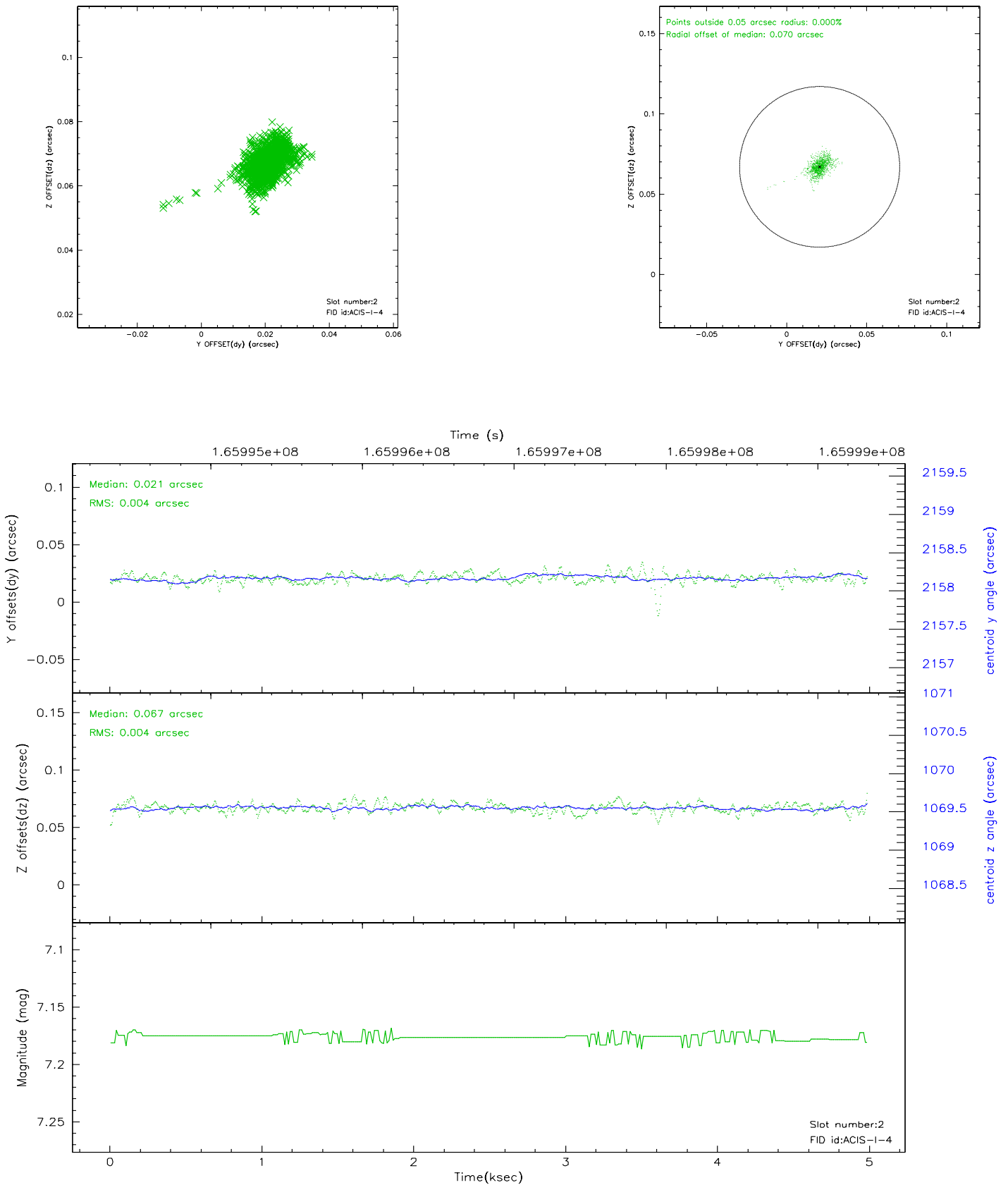
2.5.1 Slot 0



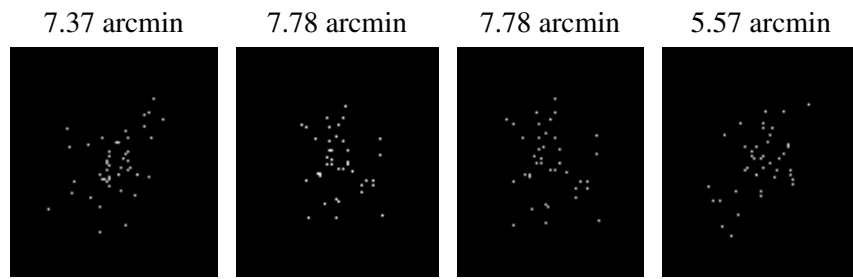
2.5.2 Slot 1



2.5.3 Slot 2



3 Point Sources



A Summary

A.1 Status

V&V Scientist	Jen Lauer
V&V Date (YYYY-MM-DD)	2006.07.30
V&V Edition	1
V&V Disposition and Status	OK
V&V Charge Time	4.581

A.2 Comments