

V&V Reference Report

L2 ASCDS Version : 7.6.8.1

Observation 3400 - L2 Version 001
Chandra X-Ray Center

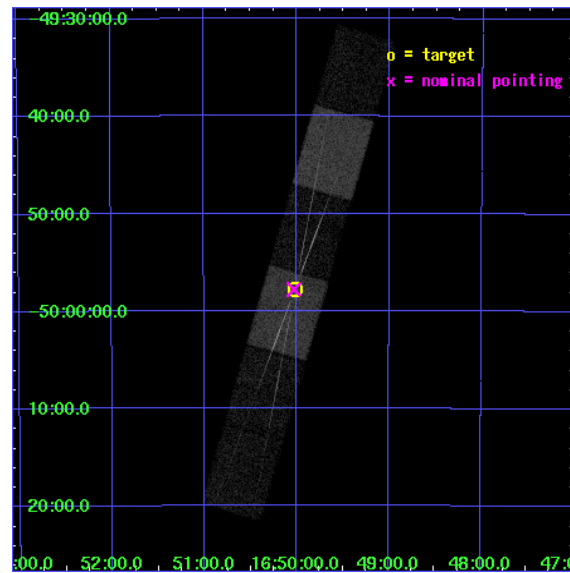
L2 Processing Date : Aug 28 2006

Contents

1	Front	2
2	OBI	3
2.1	OBI	3
2.1.1	Images	3
2.1.2	Bias	3
2.1.3	Parameters	4
2.1.4	Events	4
2.2	Compared Parameters	5
2.3	Aspect	6
2.4	Star Slots	9
2.4.1	Slot 3	9
2.4.2	Slot 4	10
2.4.3	Slot 5	11
2.4.4	Slot 6	12
2.4.5	Slot 7	13
2.5	FID Slots	14
2.5.1	Slot 0	14
2.5.2	Slot 1	15
2.5.3	Slot 2	16
3	Gratings	17
3.1	HEG Arm	17
3.2	MEG Arm	19
A	Summary	21
A.1	Status	21
A.2	Comments	21

1 Front

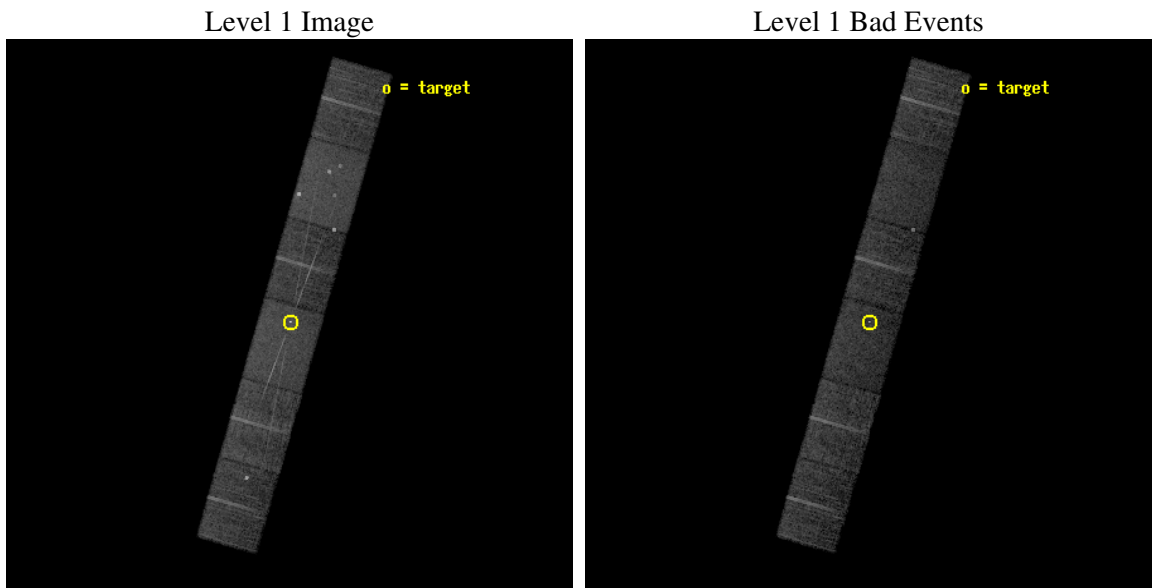
seq_num	400211
obs_id	3400
title	BLACK HOLE X-RAY TRANSIENTS DURING OUTBURST DECAY
observer	Dr. John Tomsick
object	XTE J1650-500
dtcycle	0
cycle	P
ra_targ	252.504167
dec_targ	-49.9625
ra_nom	252.50734160025
dec_nom	-49.963394465005
roll_nom	106.03029993827
revision	2
ontime	10162.5
livetime	9998.3668104398
ontime4	10162.5
ontime5	10162.5
ontime6	10162.5
ontime7	10162.5
ontime8	10162.5
ontime9	10162.5
l2events	87771



2 OBI

2.1 OBI

2.1.1 Images

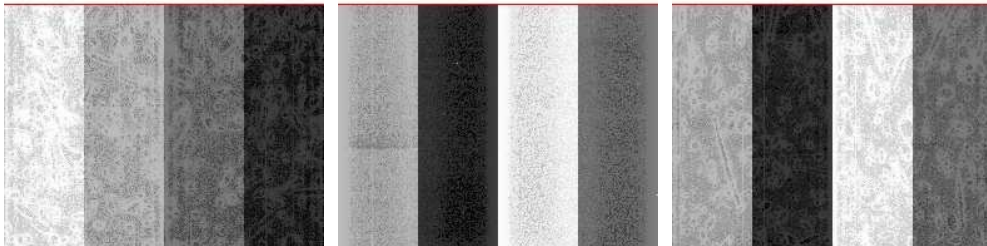


2.1.2 Bias

Chip 4

Chip 5

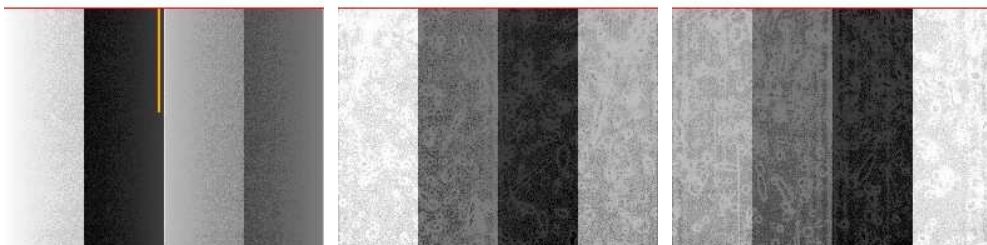
Chip 6



Chip 7

Chip 8

Chip 9



2.1.3 Parameters

obi_num	0
ascdsver	7.6.8.1
caldbver	3.2.3
date	2006-08-28T11:56:03
revision	2

sched_exp_time	10000.000000
ontime	10166.567599654
ontime4	10166.567599654
ontime5	10166.567599654
ontime6	10166.567599654
ontime7	10166.567599654
ontime8	10169.10861975
ontime9	10169.10861975
l1events	368829

2.1.4 Events

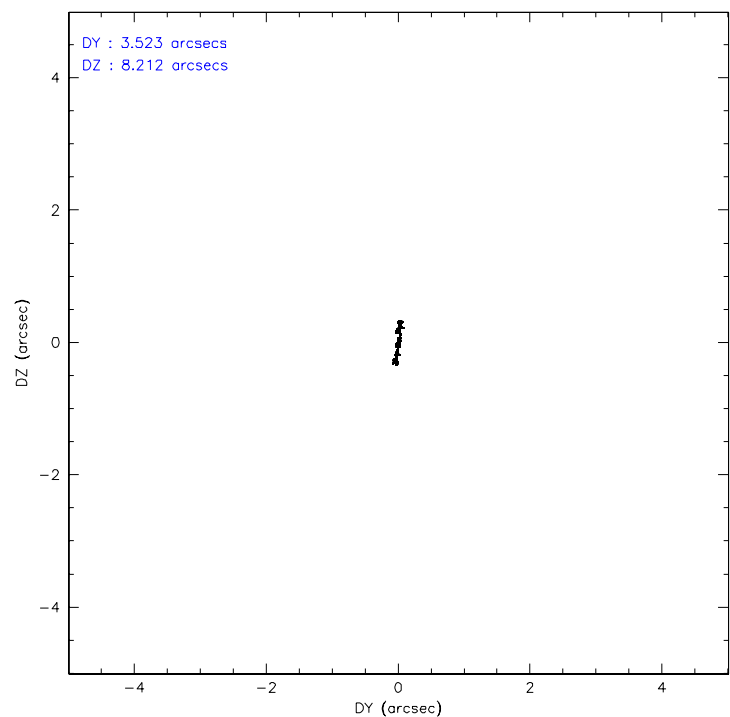
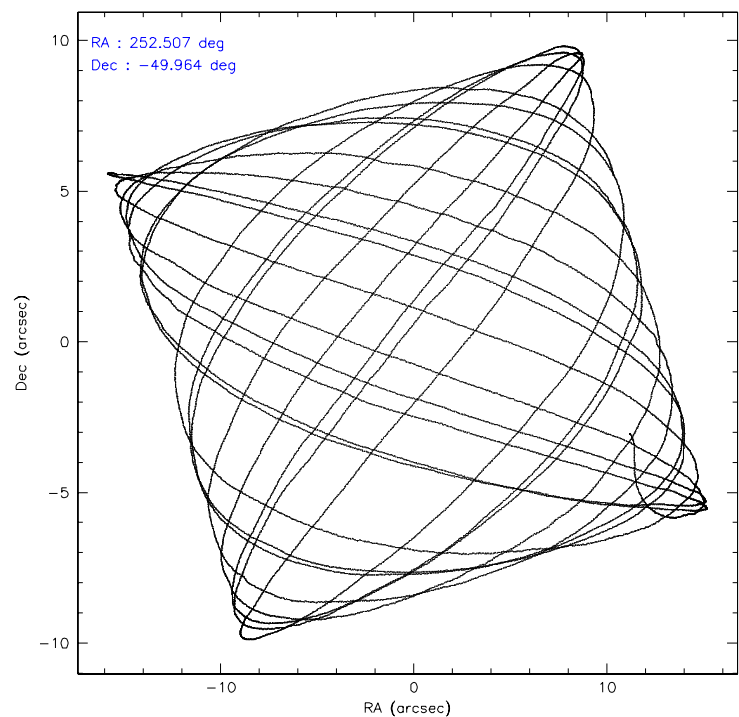
	ccd 4	ccd 5	ccd 6	ccd 7	ccd 8	ccd 9
level 1 events	55198	75981	52560	71888	62875	50327
rejected events	48800	39564	42770	39835	48159	42088
rejected %	88%	52%	81%	55%	76%	83%

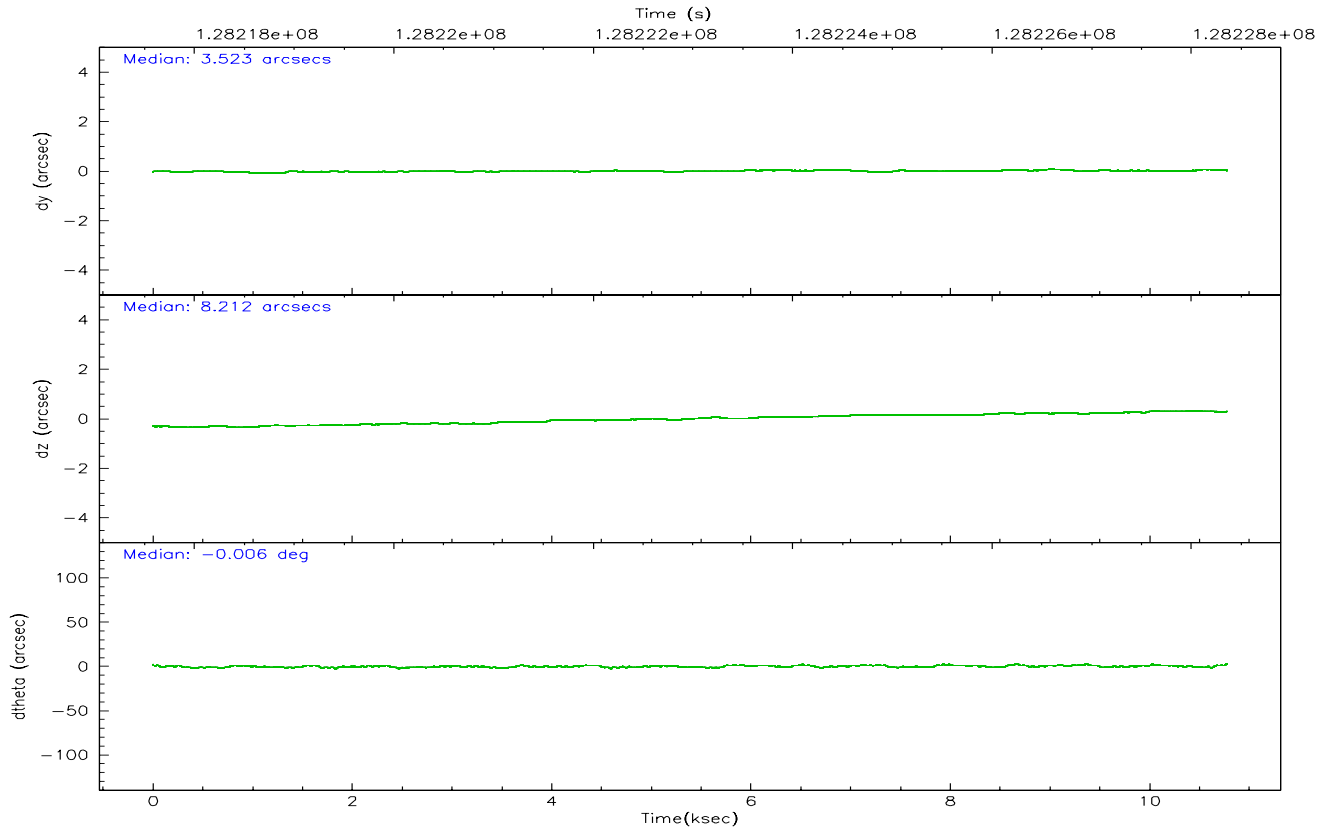
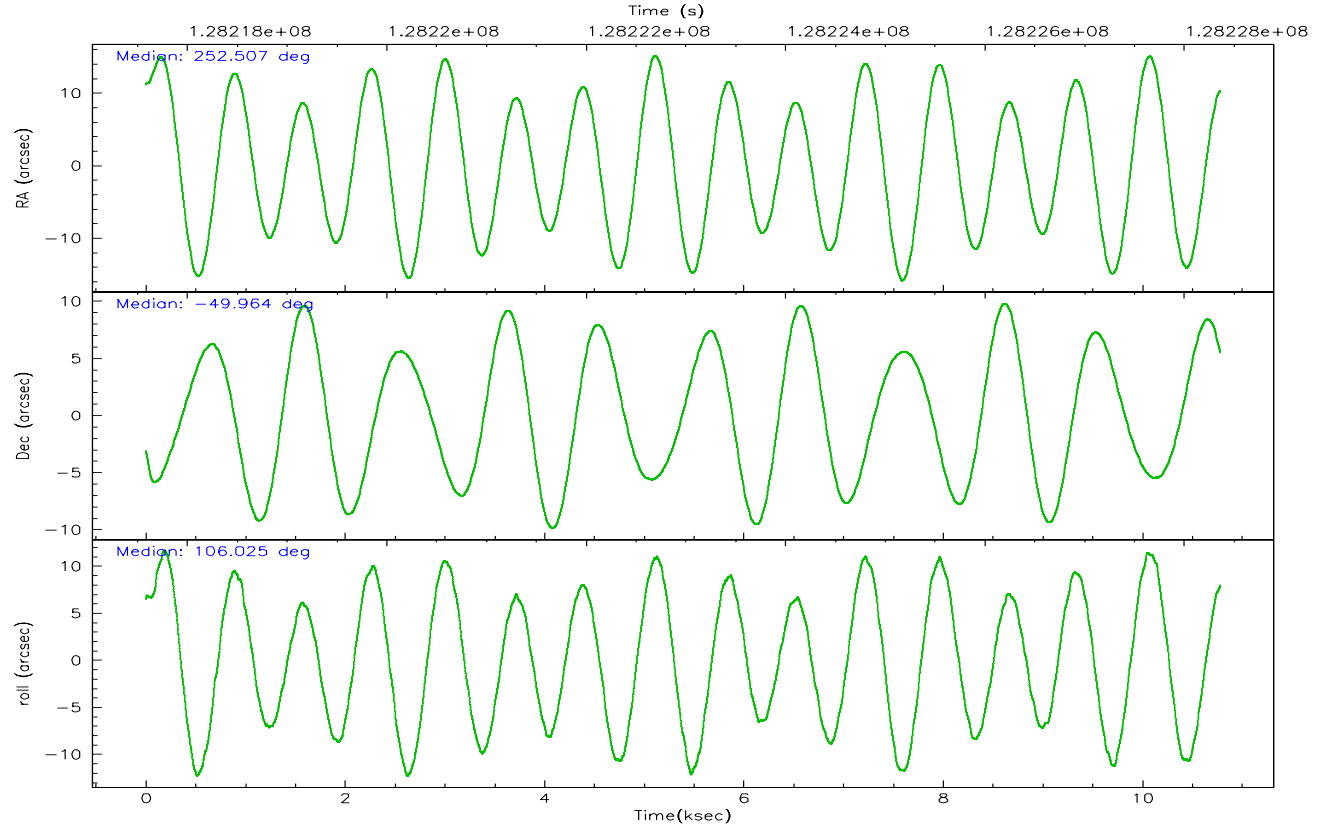
	ccd 4	ccd 5	ccd 6	ccd 7	ccd 8	ccd 9
grade 0 events	2678	7327	5291	2830	5341	4445
	4%	9%	10%	3%	8%	8%
grade 1 events	24	602	20	99	40	30
	0%	0%	0%	0%	0%	0%
grade 2 events	1482	9722	1671	7687	3071	1328
	2%	12%	3%	10%	4%	2%
grade 3 events	644	905	785	2121	1465	651
	1%	1%	1%	2%	2%	1%
grade 4 events	560	898	792	2155	1314	632
	1%	1%	1%	2%	2%	1%
grade 5 events	1820	3580	2109	5074	2633	2116
	3%	4%	4%	7%	4%	4%
grade 6 events	1038	17586	1260	17277	3532	1190
	1%	23%	2%	24%	5%	2%
grade 7 events	46952	35361	40632	34645	45479	39935
	85%	46%	77%	48%	72%	79%

2.2 Compared Parameters

Parameter	Planned	Actual	Parameter	Planned	Actual
Instrument	ACIS	ACIS	Obspar format version number	6	6
Detector	ACIS-456789	ACIS-456789	Obspar file type	PREDICTED	ACTUAL
Grating	HETG	HETG	Obspar update status	NONE	UPDATED
Data mode	FAINT	FAINT	On-chip summing requested	N	N
Observation mode	POINTING	POINTING	Subarray requested	CUSTOM	CUSTOM
Pointing RA	252.538165	252.5073416002538	Subarray start row	1	1
Pointing Dec	-49.982095	-49.96339446500465	Subarray row count	774	774
Pointing Roll	105.897279	106.0302999382669	Alternating exposures requested	N	N
SIM focus pos (mm)	-0.684267	-0.6828225247311905	Primary exposure time	0.000000	2.5
SIM defocus (mm)	0	0.001444936568705701			
SIM translation stage pos (mm)	-187.132523	-187.1228876879999			
SIM translation stage offset (mm)	-3	-3.009634895007935			
Observation start time	128218363.184000	128217104.42925			
Observation start date	2002-01-24T00:11:39	2002-01-23T23:51:44			
Observation end time	128228363.184000	128229771.37976			
Observation end date	2002-01-24T02:58:19	2002-01-24T03:22:51			
Read mode	TIMED	TIMED			

2.3 Aspect



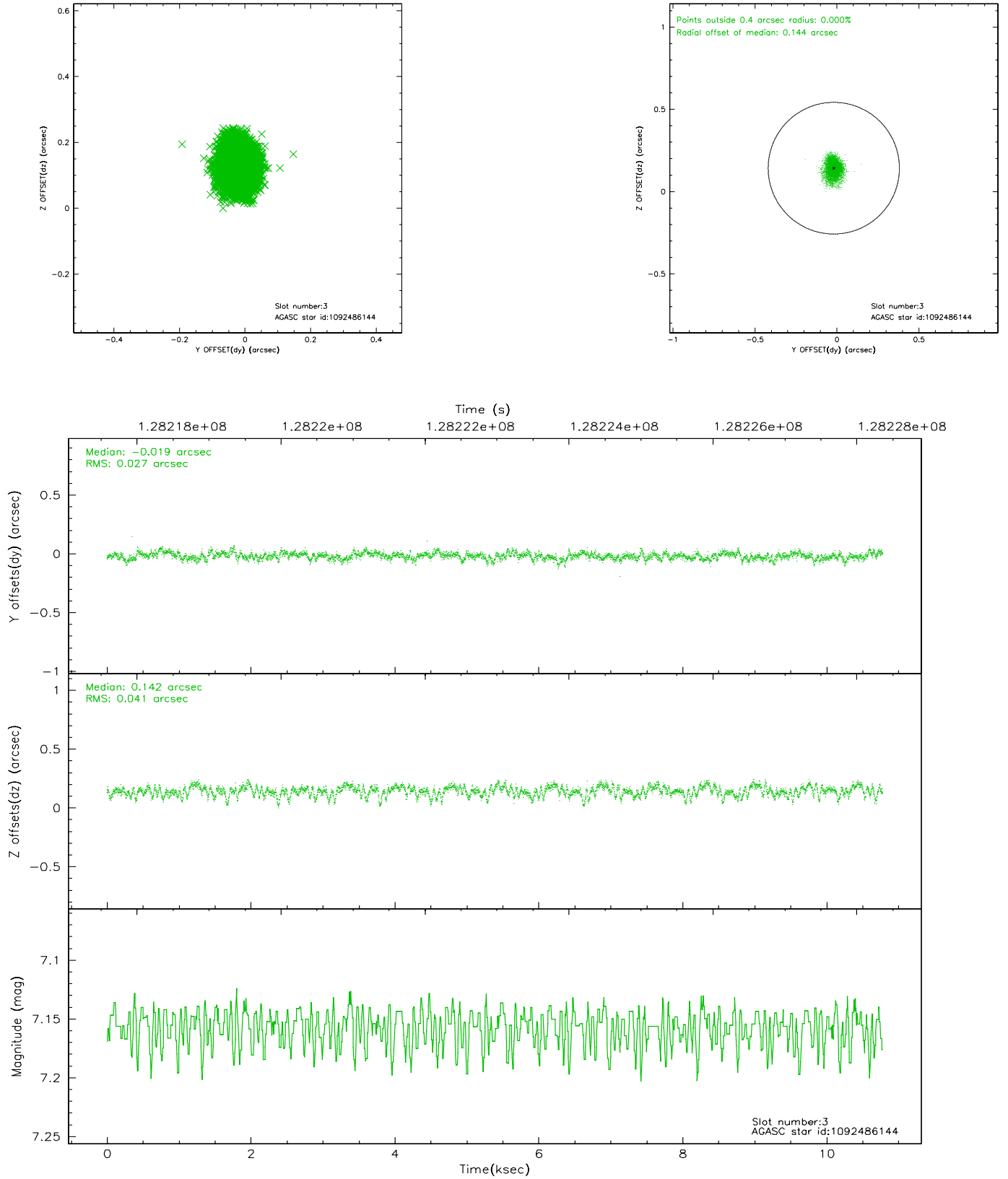


Slot Statistics

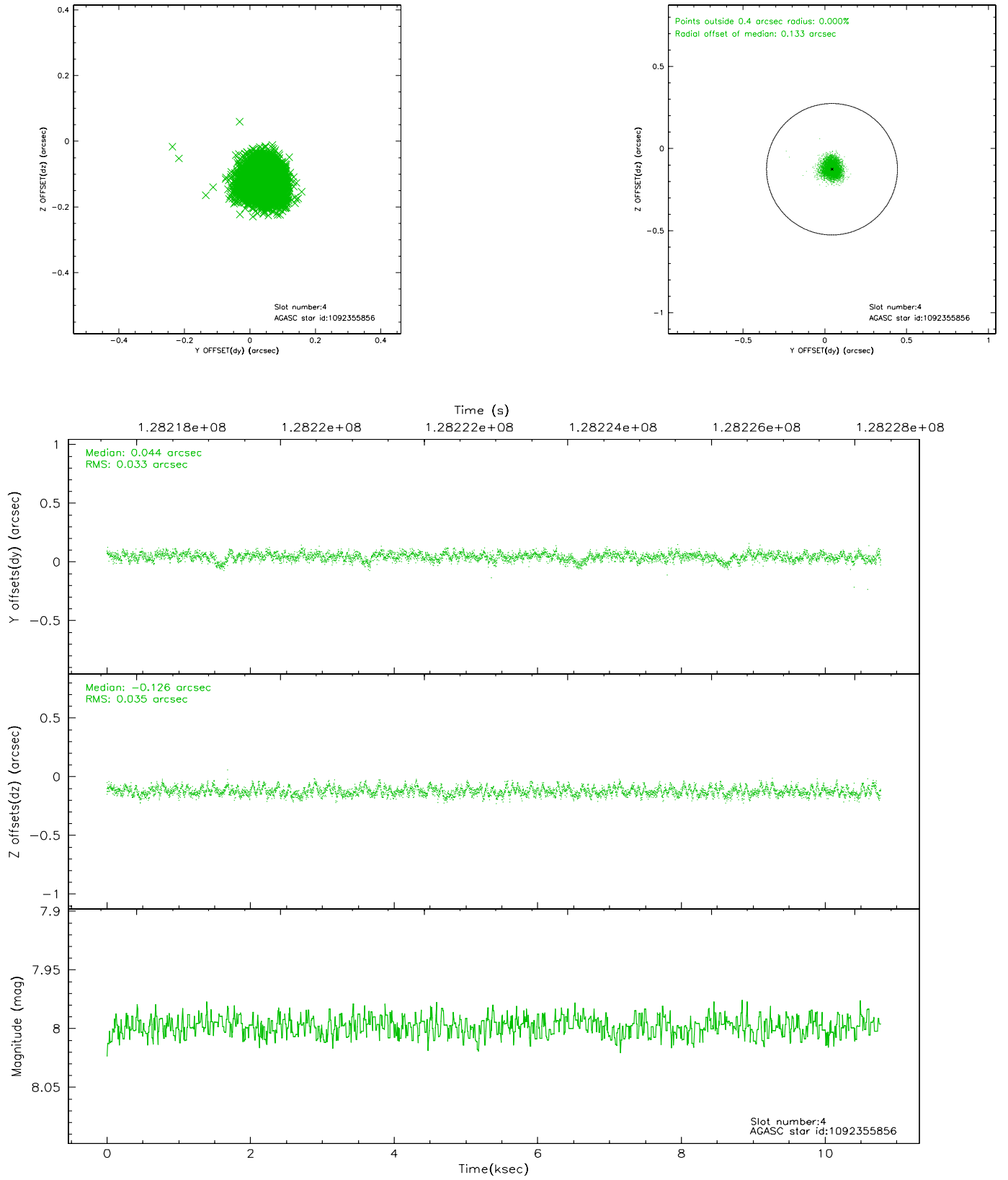
slot	status	id	mag	n_pts	med_dy	med_dz	dr1	dr2	ra	dec	mean_y	mean_z
0	FID	ACIS-S-1	7.19	2629	-0.025	0.032	0.017	0.026	0.000000	0.000000	940.06	-1787.13
1	FID	ACIS-S-5	7.23	2630	0.015	-0.004	0.011	0.020	0.000000	0.000000	-1808.65	109.84
2	FID	ACIS-S-6	7.37	2629	-0.012	-0.018	0.015	0.023	0.000000	0.000000	405.08	754.35
3	GUIDE	1092486144	7.16	5259	-0.019	0.142	0.051	0.089	253.742795	-50.189175	-1497.49	-2460.56
4	GUIDE	1092355856	8.00	5259	0.044	-0.126	0.051	0.082	252.380362	-50.402230	-1354.76	761.17
5	GUIDE	1092361264	8.20	5259	-0.058	-0.167	0.054	0.089	251.314813	-49.615883	2028.01	2388.95
6	GUIDE	1092357952	8.66	5258	-0.079	0.115	0.088	0.140	252.624295	-49.307047	2283.49	-860.10
7	GUIDE	1092487776	8.57	5257	0.113	0.035	0.085	0.135	253.418062	-50.236939	-1446.75	-1695.02

2.4 Star Slots

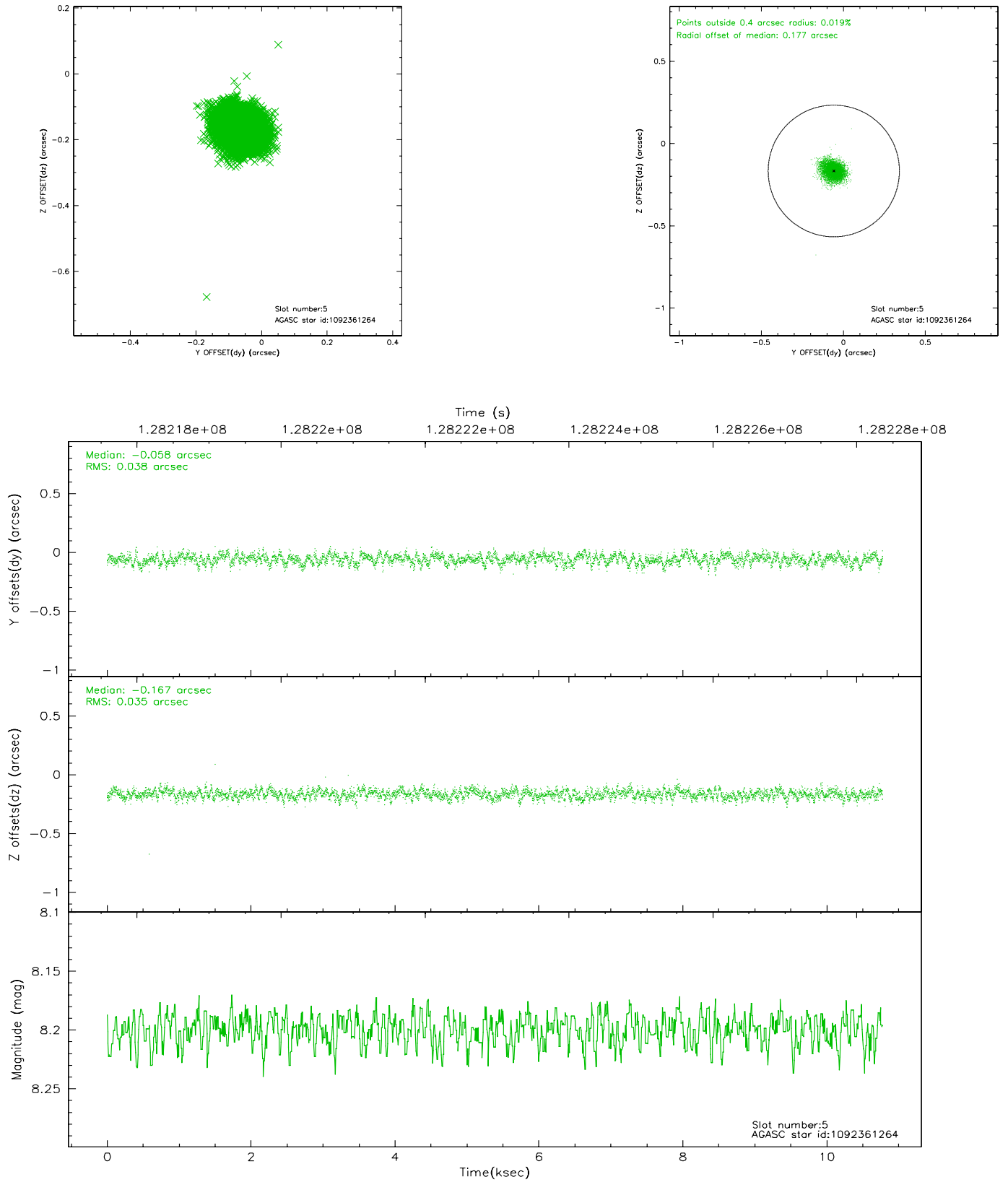
2.4.1 Slot 3



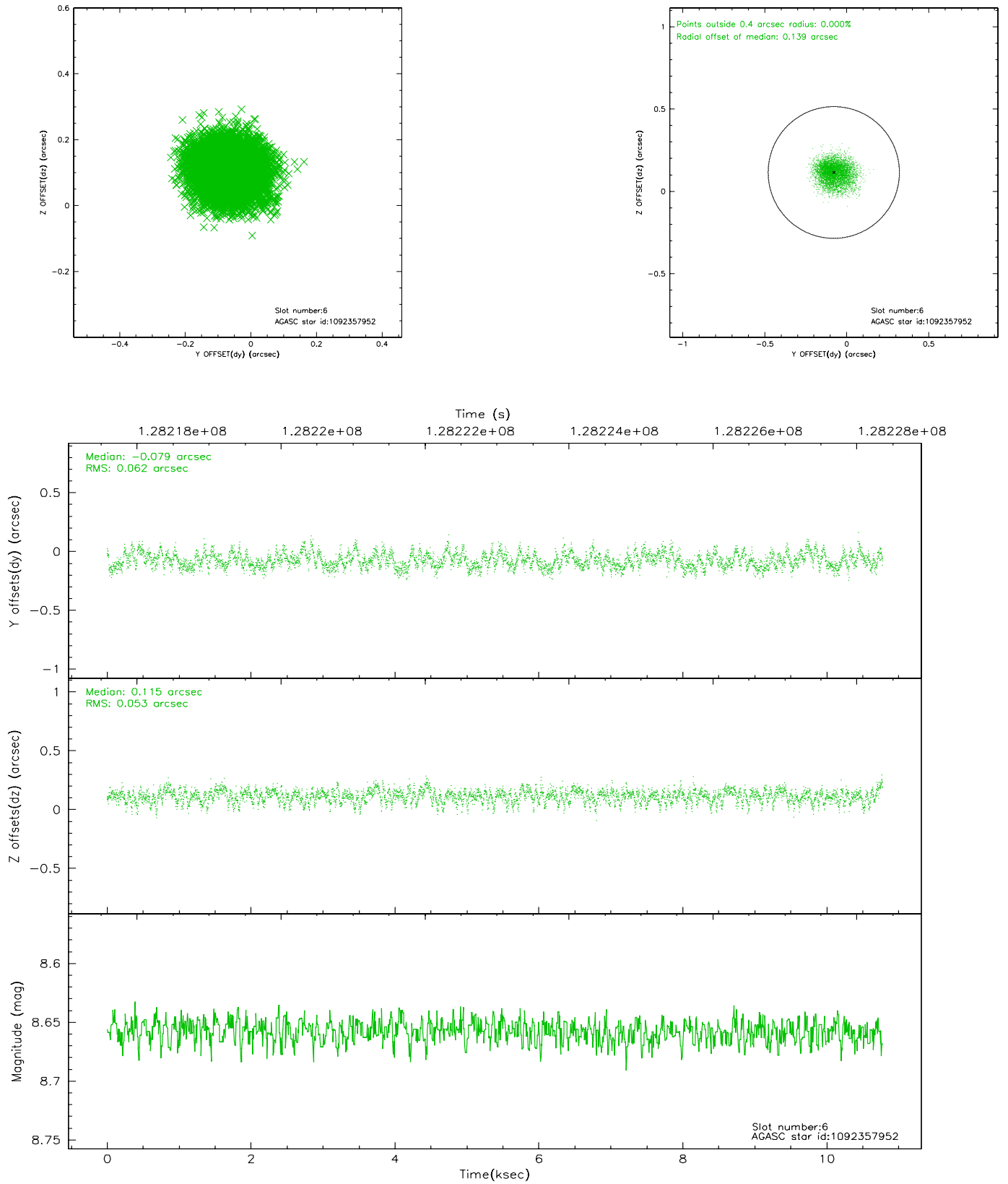
2.4.2 Slot 4



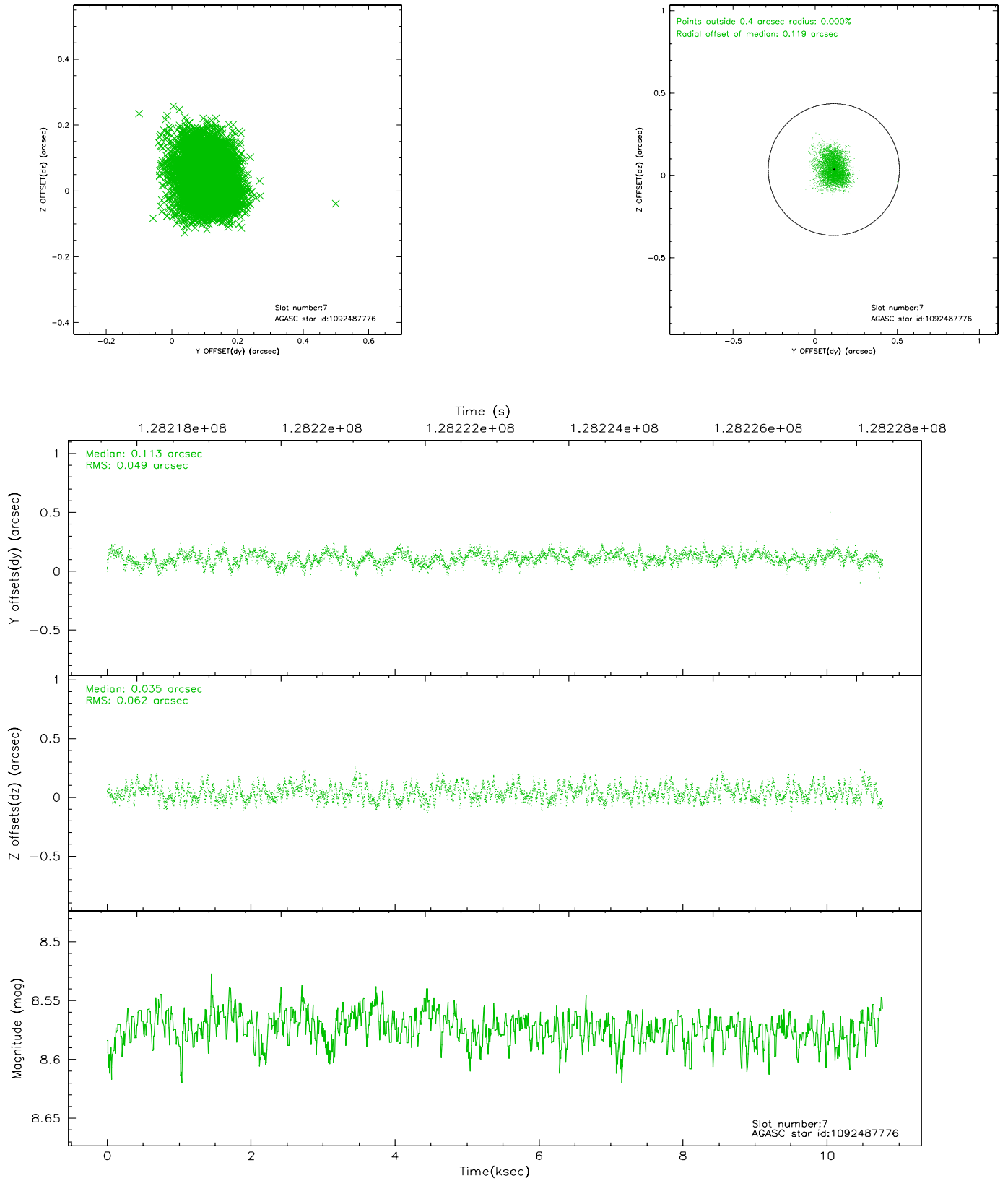
2.4.3 Slot 5



2.4.4 Slot 6

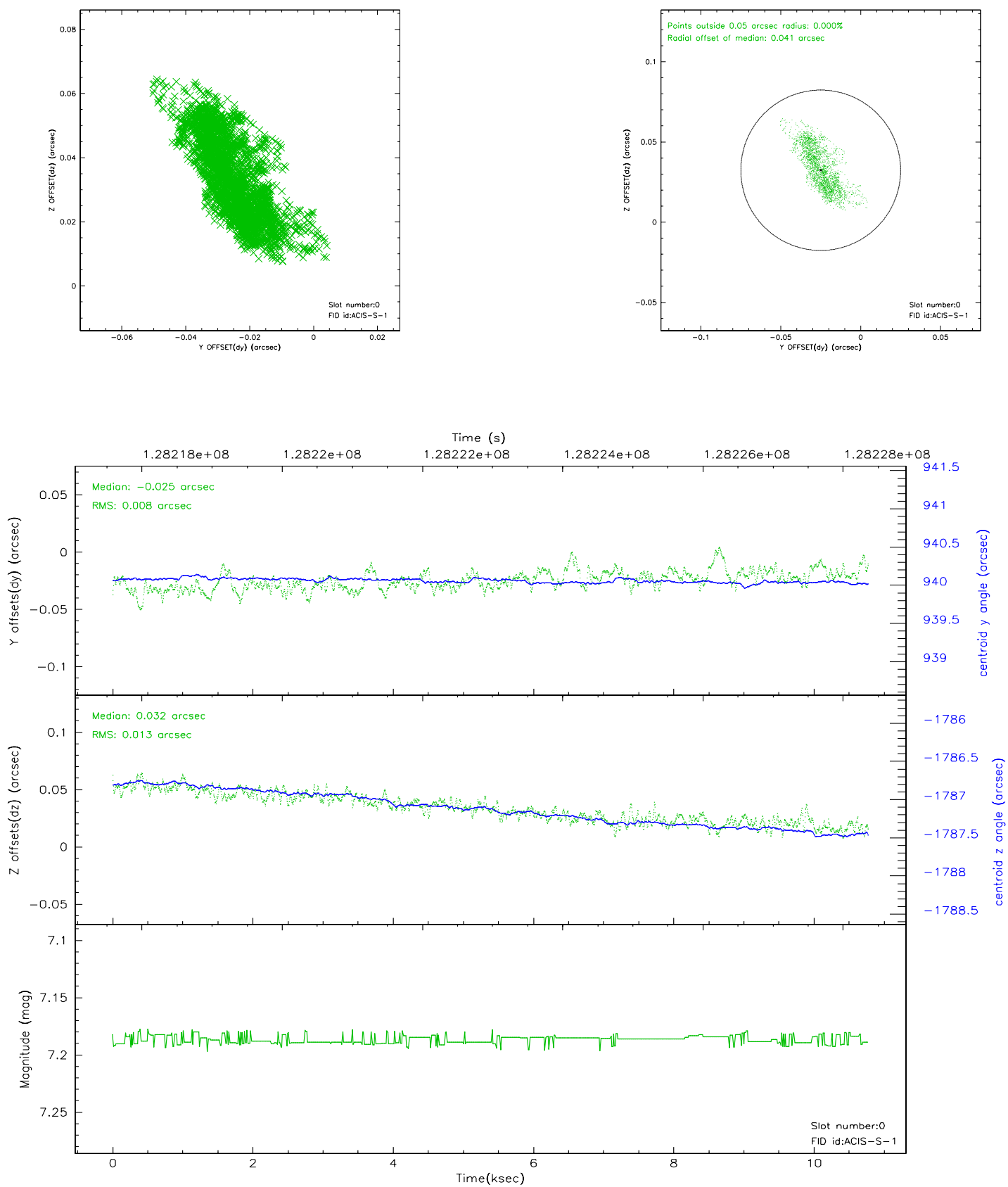


2.4.5 Slot 7

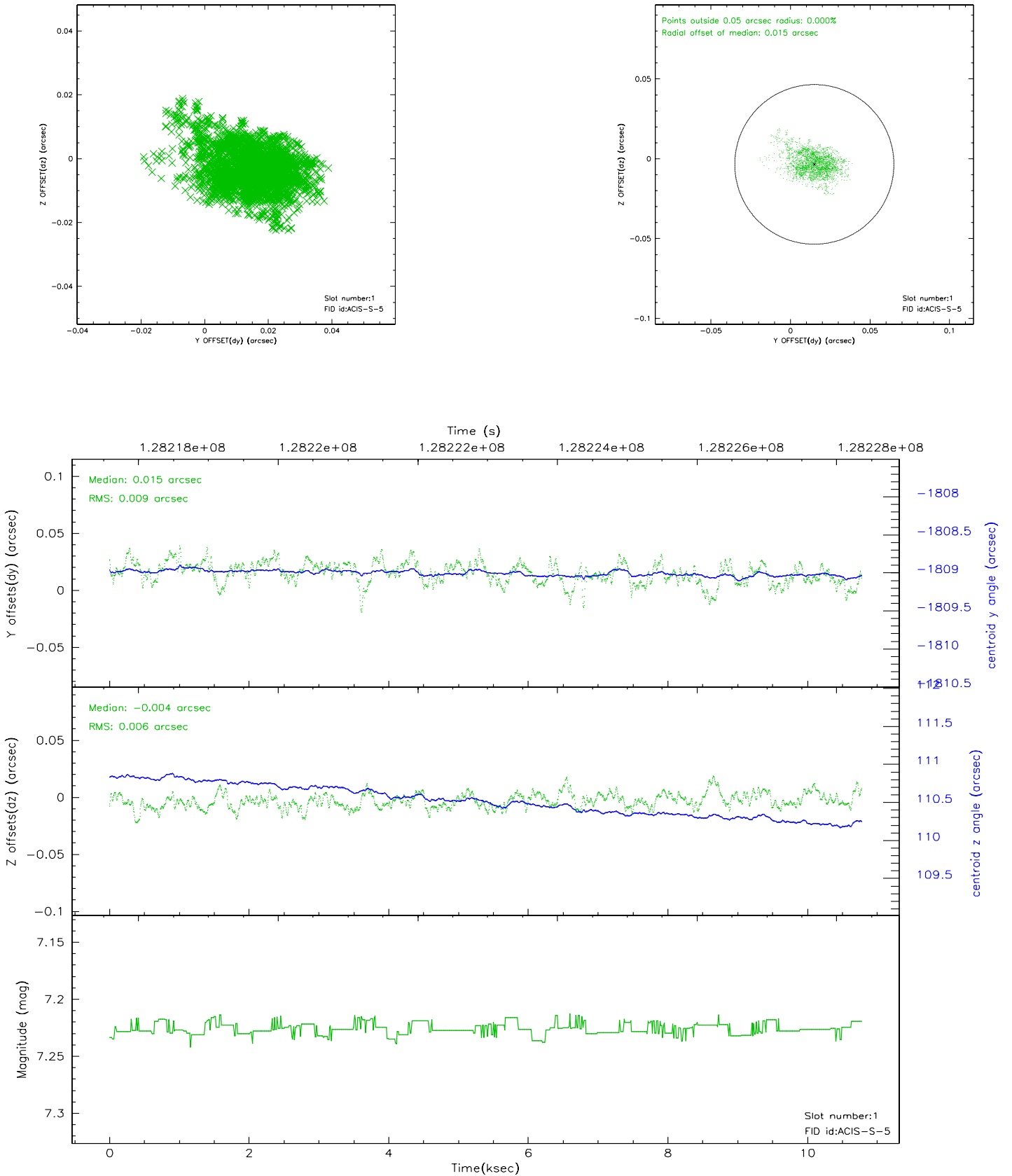


2.5 FID Slots

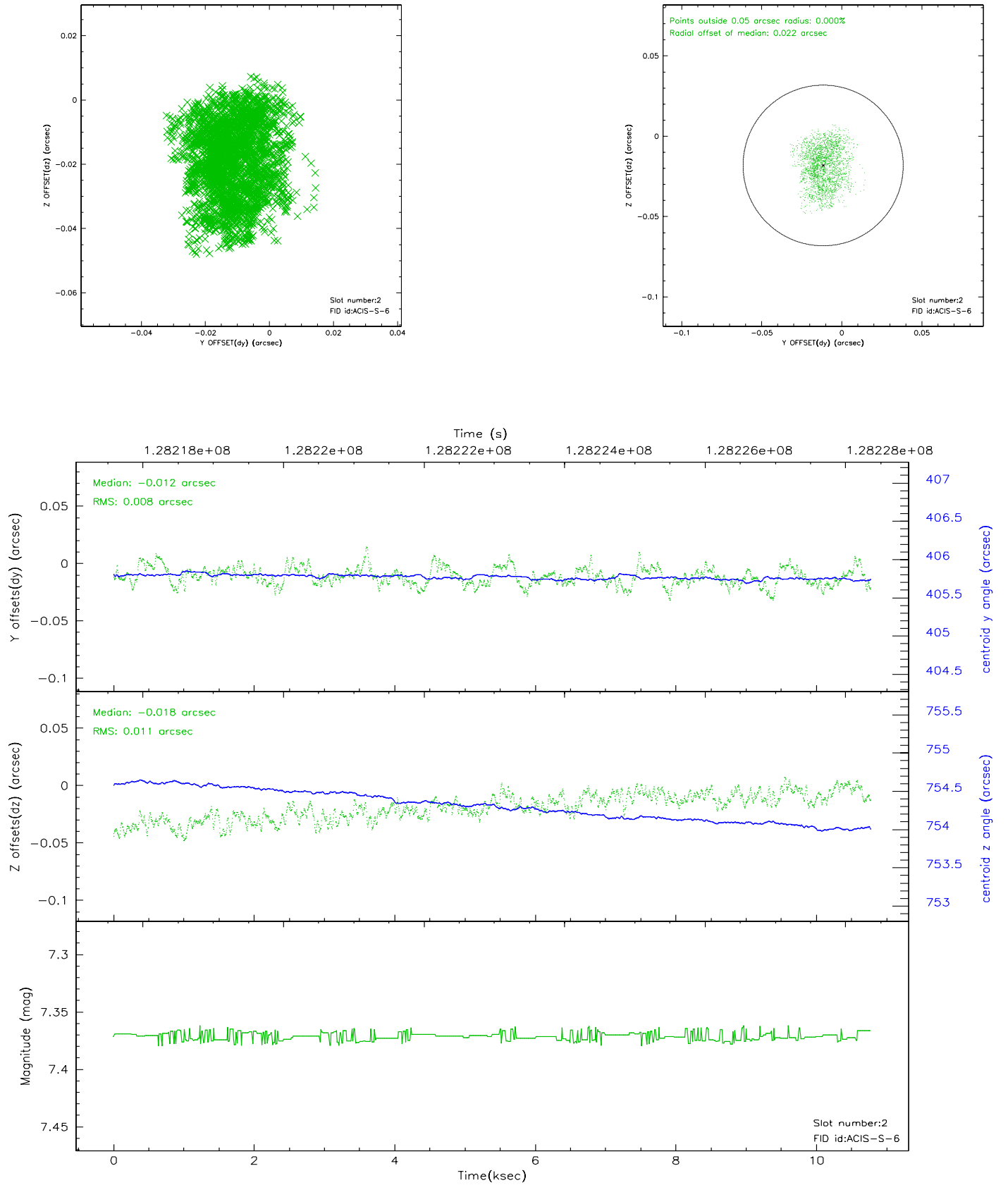
2.5.1 Slot 0



2.5.2 Slot 1



2.5.3 Slot 2

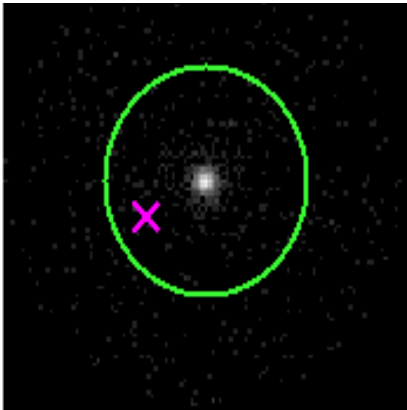


3 Gratings

3.1 HEG Arm



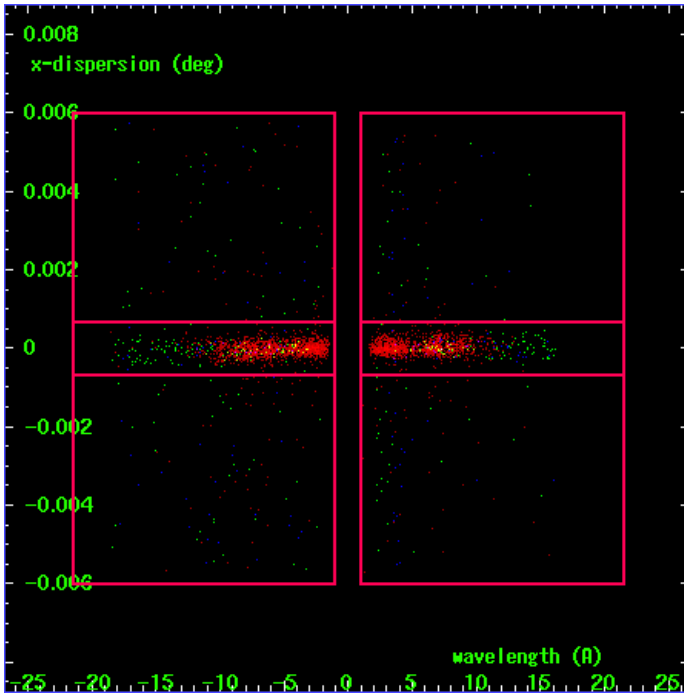
HEG Order Sort 123



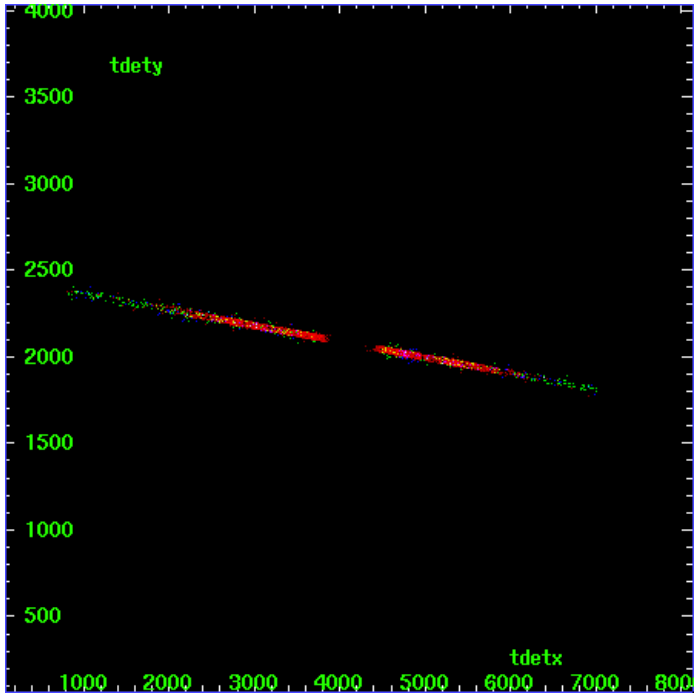
HEG Zero Order



HEG Order Sort ALL

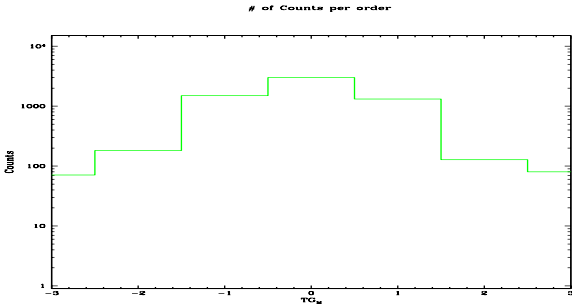


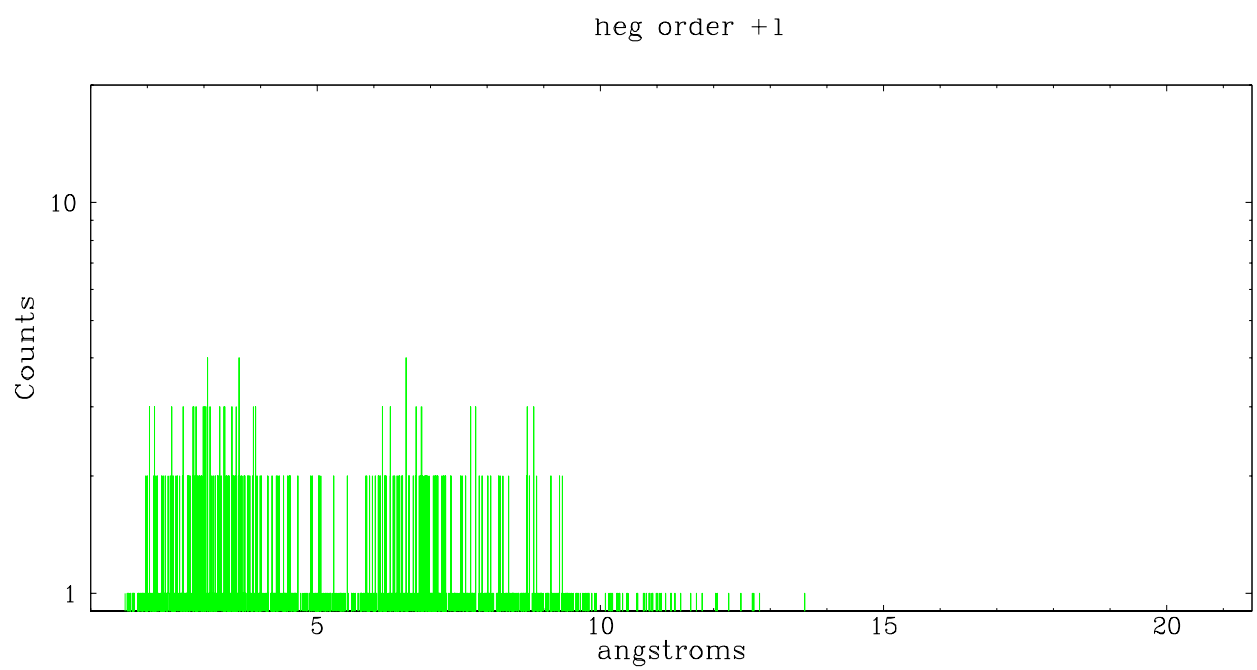
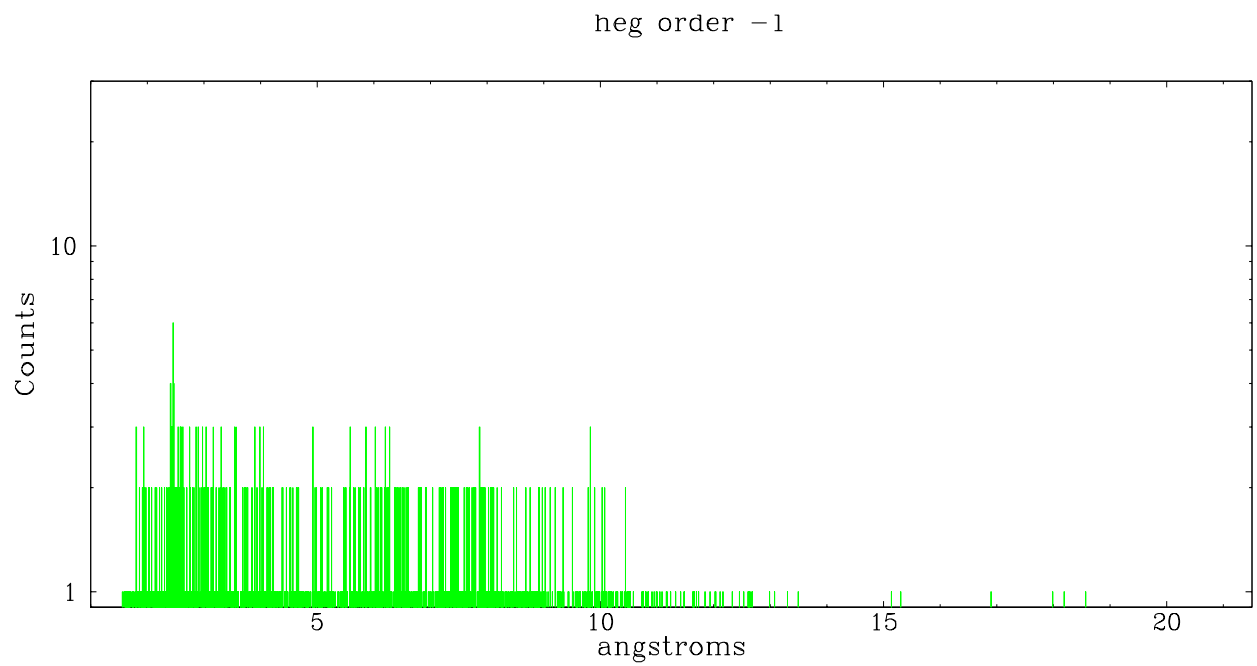
Spot Image HEG



Full Detector HEG

	order -3	order -2	order -1	order 0	order 1	order 2	order 3
Events	71	181	1502	3007	1314	128	80

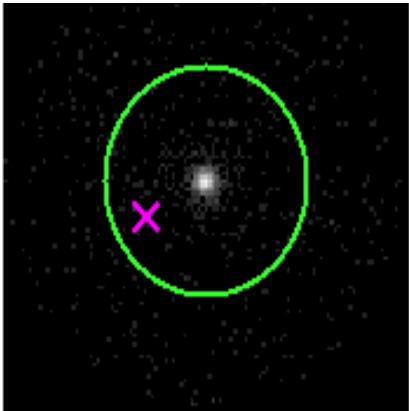




3.2 MEG Arm



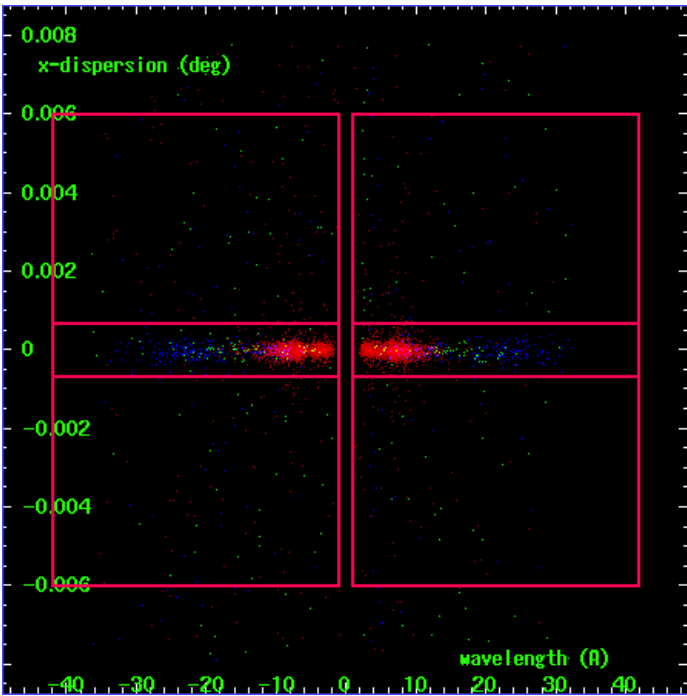
MEG Order Sort 123



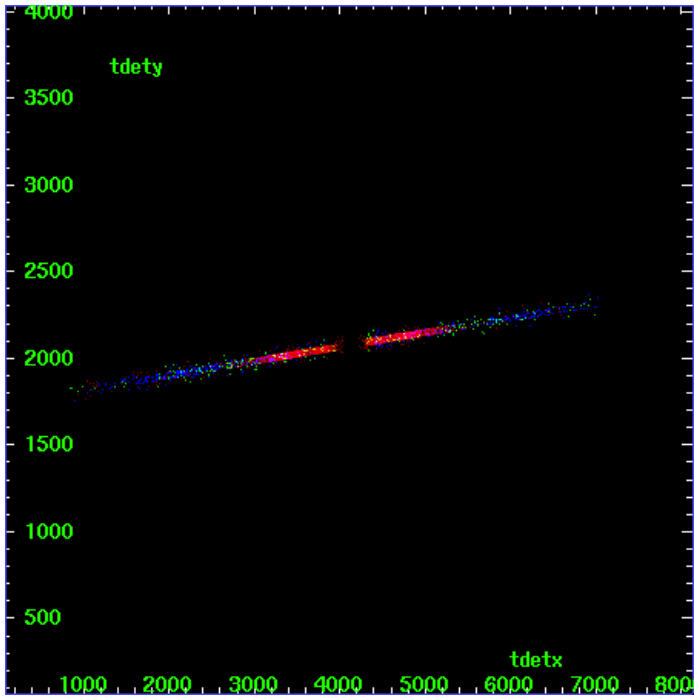
MEG Zero Order



MEG Order Sort ALL

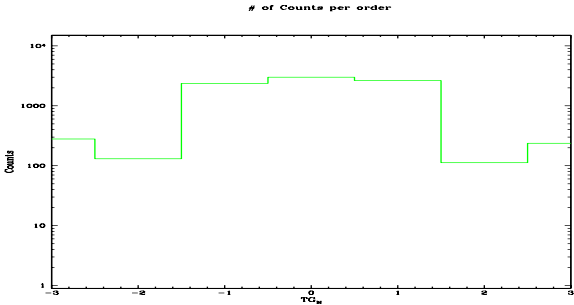


Spot Image MEG

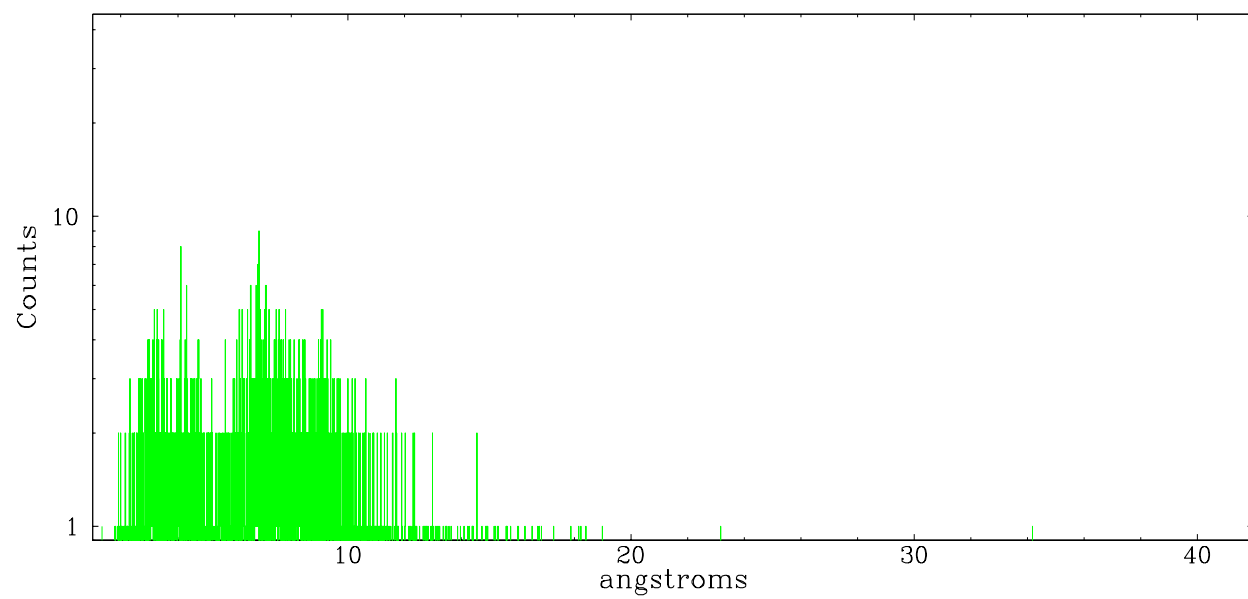


Full Detector MEG

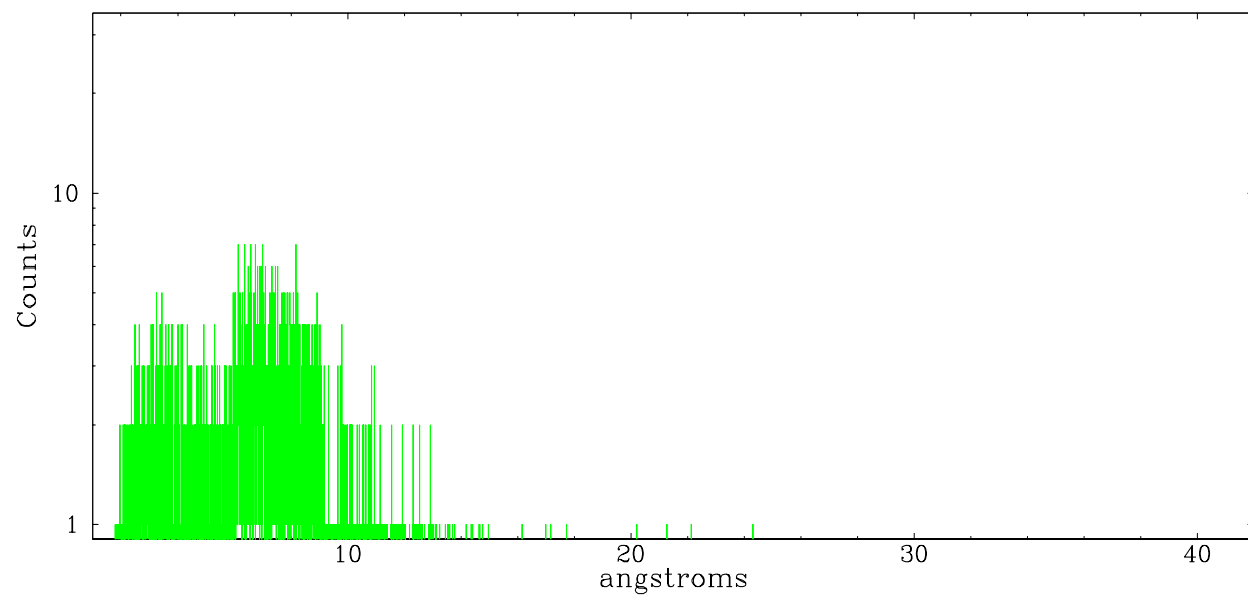
	order -3	order -2	order -1	order 0	order 1	order 2	order 3
Events	279	131	2373	3007	2643	112	237



meg order -1



meg order +1



A Summary

A.1 Status

V&V Scientist	Jen Lauer
V&V Date (YYYY-MM-DD)	2006.08.28
V&V Edition	1
V&V Disposition and Status	OK
V&V Charge Time	10.165

A.2 Comments

Observation occurred within 12 hours of obs3383