

V&V Reference Report

L2 ASCDS Version : 7.6.8.1

Observation 3290 - L2 Version 001
Chandra X-Ray Center

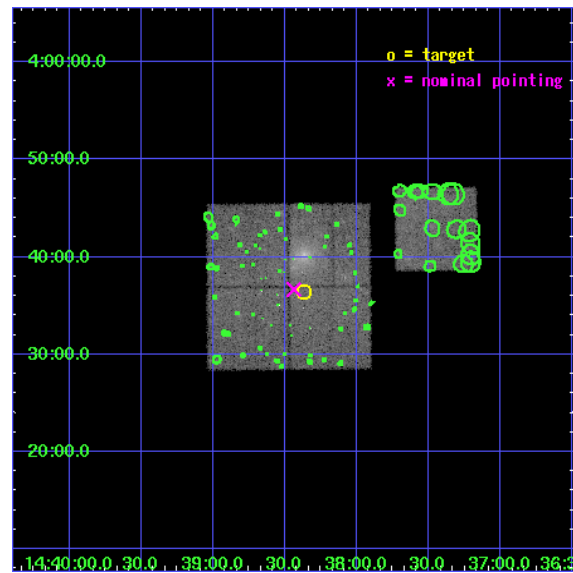
L2 Processing Date : Sep 6 2006

Contents

1	Front	2
2	OBI	3
2.1	OBI	3
2.1.1	Images	3
2.1.2	Bias	3
2.1.3	Parameters	4
2.1.4	Events	4
2.2	Compared Parameters	5
2.3	Aspect	6
2.4	Star Slots	9
2.4.1	Slot 3	9
2.4.2	Slot 4	10
2.4.3	Slot 5	11
2.4.4	Slot 7	12
2.5	FID Slots	13
2.5.1	Slot 0	13
2.5.2	Slot 1	14
2.5.3	Slot 2	15
3	Point Sources	16
A	Summary	17
A.1	Status	17
A.2	Comments	17

1 Front

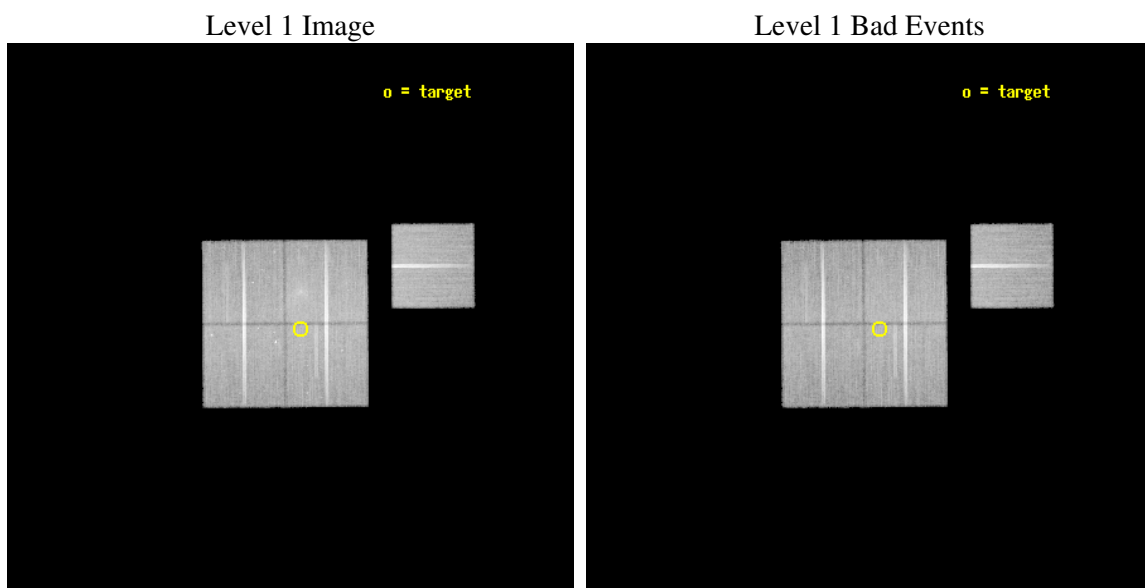
seq_num	800290
obs_id	3290
title	MAPPING DARK MATTER IN A COLLING FLOW CLUSTER AND A DARK CLUMP
observer	Professor Gordon Garmire
object	ABELL 1942 AND CLUMP
dtcycle	0
cycle	P
ra_targ	219.590833
dec_targ	3.606944
ra_nom	219.60939755683
dec_nom	3.6110628959494
roll_nom	89.608767577637
revision	2
ontime	58335.799887836
livetime	57573.59971611
ontime0	58329.517937317
ontime1	58323.235966906
ontime2	58316.954016417
ontime3	58335.799887836
ontime6	58326.376957074
l2events	141497



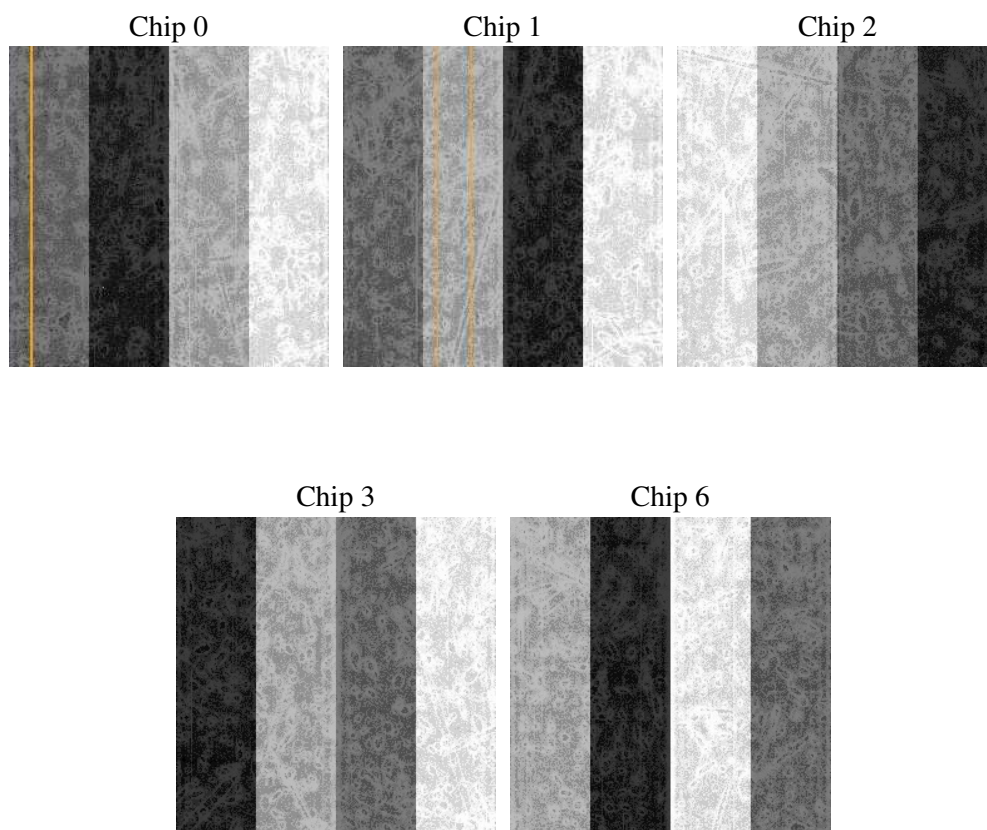
2 OBI

2.1 OBI

2.1.1 Images



2.1.2 Bias



2.1.3 Parameters

obi_num	1
ascdsver	7.6.8.1
caldbver	3.2.3
date	2006-09-06T21:15:52
revision	2

sched_exp_time	58200.000000
ontime	58375.587934166
ontime0	58369.305983648
ontime1	58363.024013236
ontime2	58356.742062747
ontime3	58375.587934166
ontime6	58366.165003404
l1events	1580091

2.1.4 Events

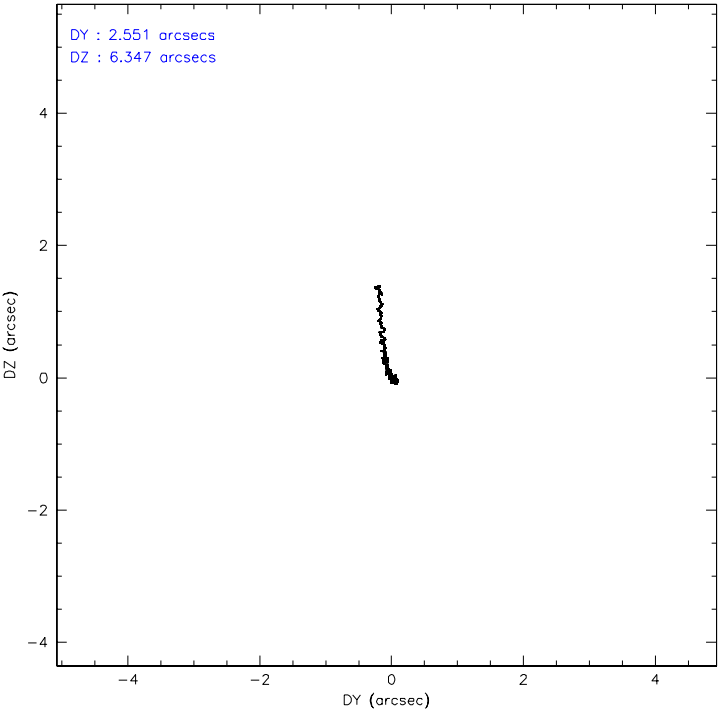
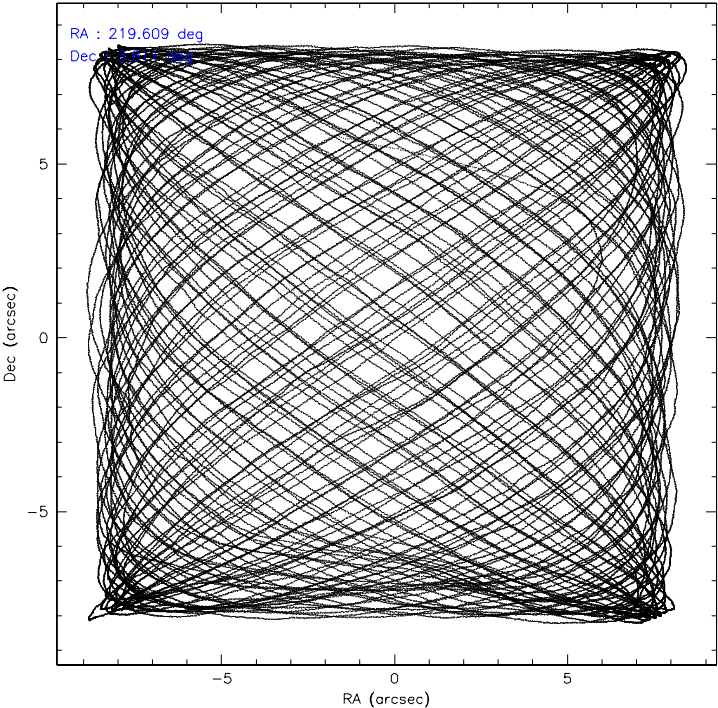
	ccd 0	ccd 1	ccd 2	ccd 3	ccd 6
level 1 events	299139	297450	349856	317525	316121
rejected events	266239	264032	307218	287833	284666
rejected %	89%	88%	87%	90%	90%

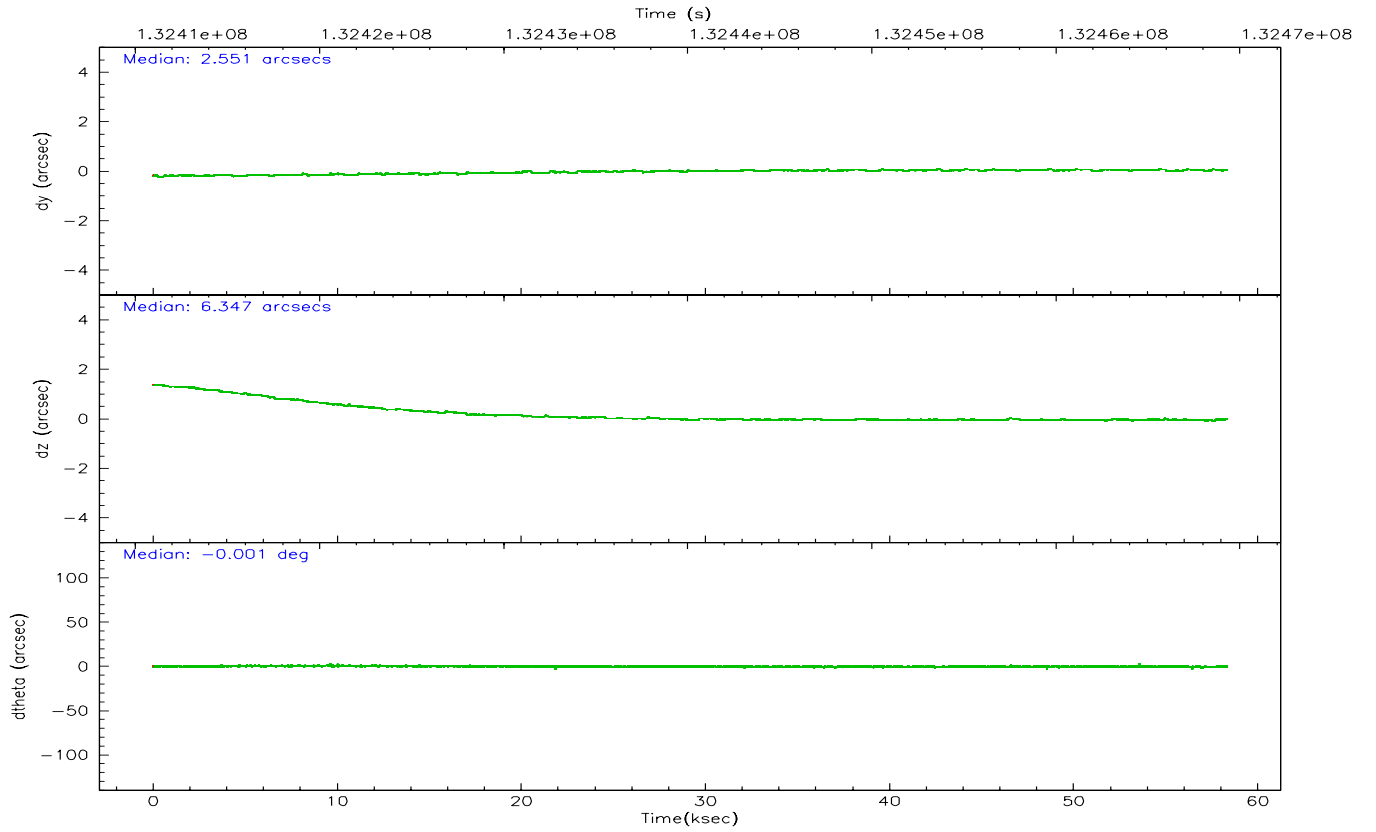
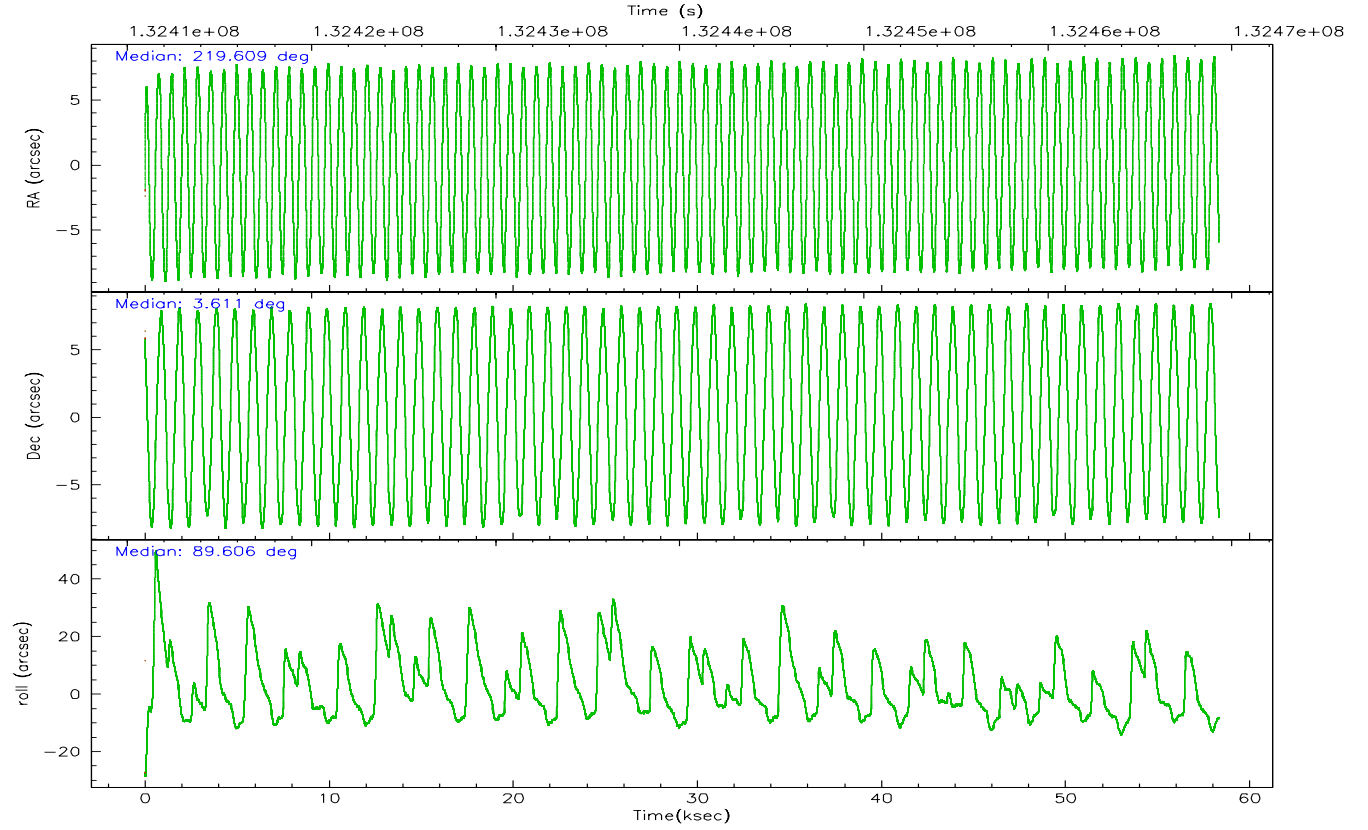
	ccd 0	ccd 1	ccd 2	ccd 3	ccd 6
grade 0 events	13393	12856	21845	11516	11970
	4%	4%	6%	3%	3%
grade 1 events	135	134	171	137	134
	0%	0%	0%	0%	0%
grade 2 events	6952	6721	7984	6183	6538
	2%	2%	2%	1%	2%
grade 3 events	3673	3989	3608	3357	3524
	1%	1%	1%	1%	1%
grade 4 events	3322	3805	3582	3183	3400
	1%	1%	1%	1%	1%
grade 5 events	8623	9493	8012	9489	9481
	2%	3%	2%	2%	2%
grade 6 events	5584	6071	5644	5472	6038
	1%	2%	1%	1%	1%
grade 7 events	257457	254381	299010	278188	275036
	86%	85%	85%	87%	87%

2.2 Compared Parameters

Parameter	Planned	Actual	Parameter	Planned	Actual
Instrument	ACIS	ACIS	Obspar format version number	6	6
Detector	ACIS-01236	ACIS-01236	Obspar file type	PREDICTED	ACTUAL
Grating	NONE	NONE	Obspar update status	NONE	UPDATED
Data mode	VFAINT	VFAINT	On-chip summing requested	N	N
Observation mode	POINTING	POINTING	Subarray requested	NONE	NONE
Pointing RA	219.623027	219.609397556825	Alternating exposures requested	N	N
Pointing Dec	3.587279	3.611062895949431	Primary exposure time	0.000000	3.1
Pointing Roll	89.399227	89.60876757763695			
SIM focus pos (mm)	-0.782348	-0.7809083437167272			
SIM defocus (mm)	0	0.001439871863259334			
SIM translation stage pos (mm)	-233.592463	-233.5874344608287			
SIM translation stage offset (mm)	0	-0.005018542100998502			
Observation start time	132411102.184000	132410114.12356			
Observation start date	2002-03-13T12:50:38	2002-03-13T12:35:14			
Observation end time	132469302.184000	132470039.72599			
Observation end date	2002-03-14T05:00:38	2002-03-14T05:13:59			
Read mode	TIMED	TIMED			

2.3 Aspect



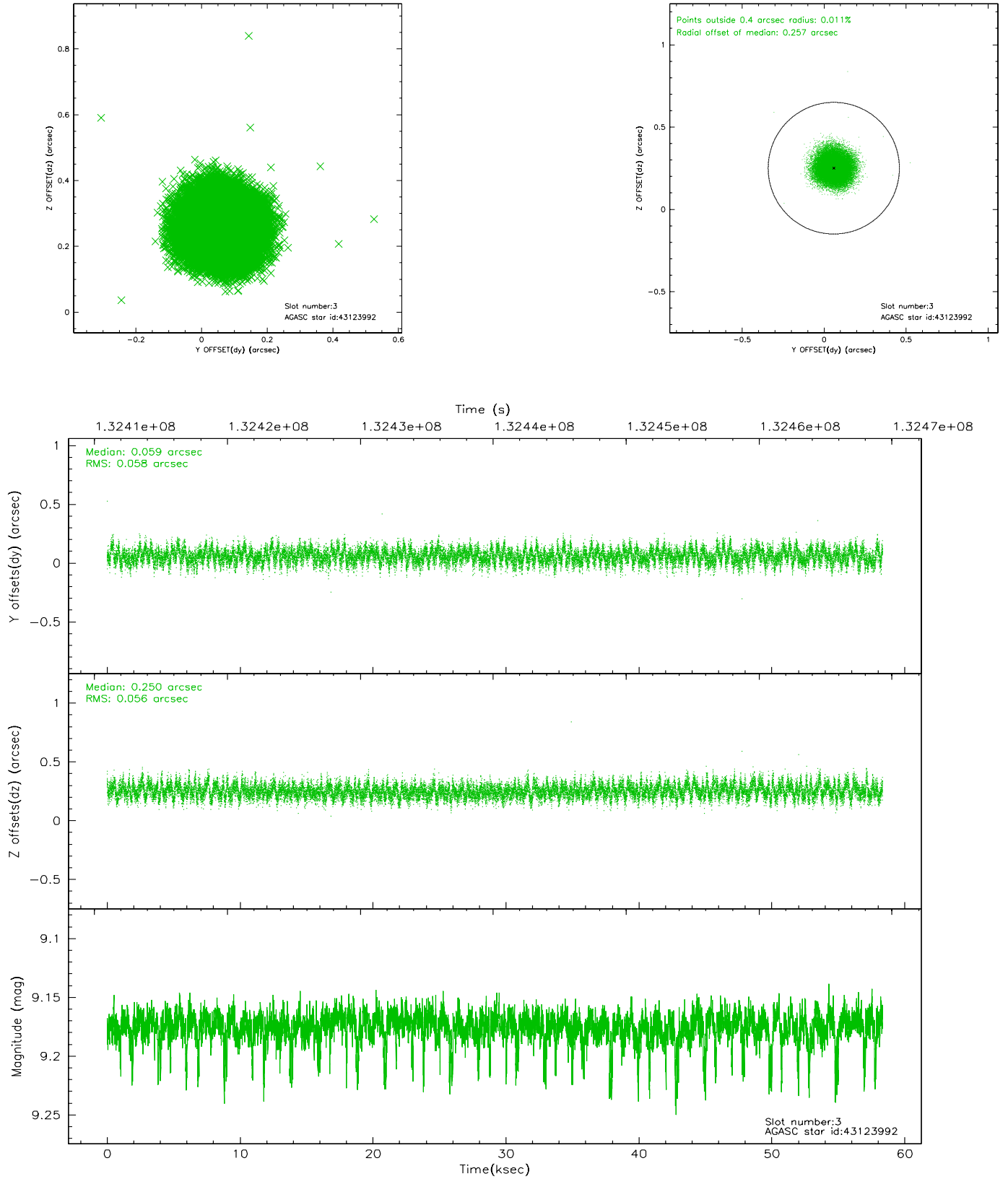


Slot Statistics

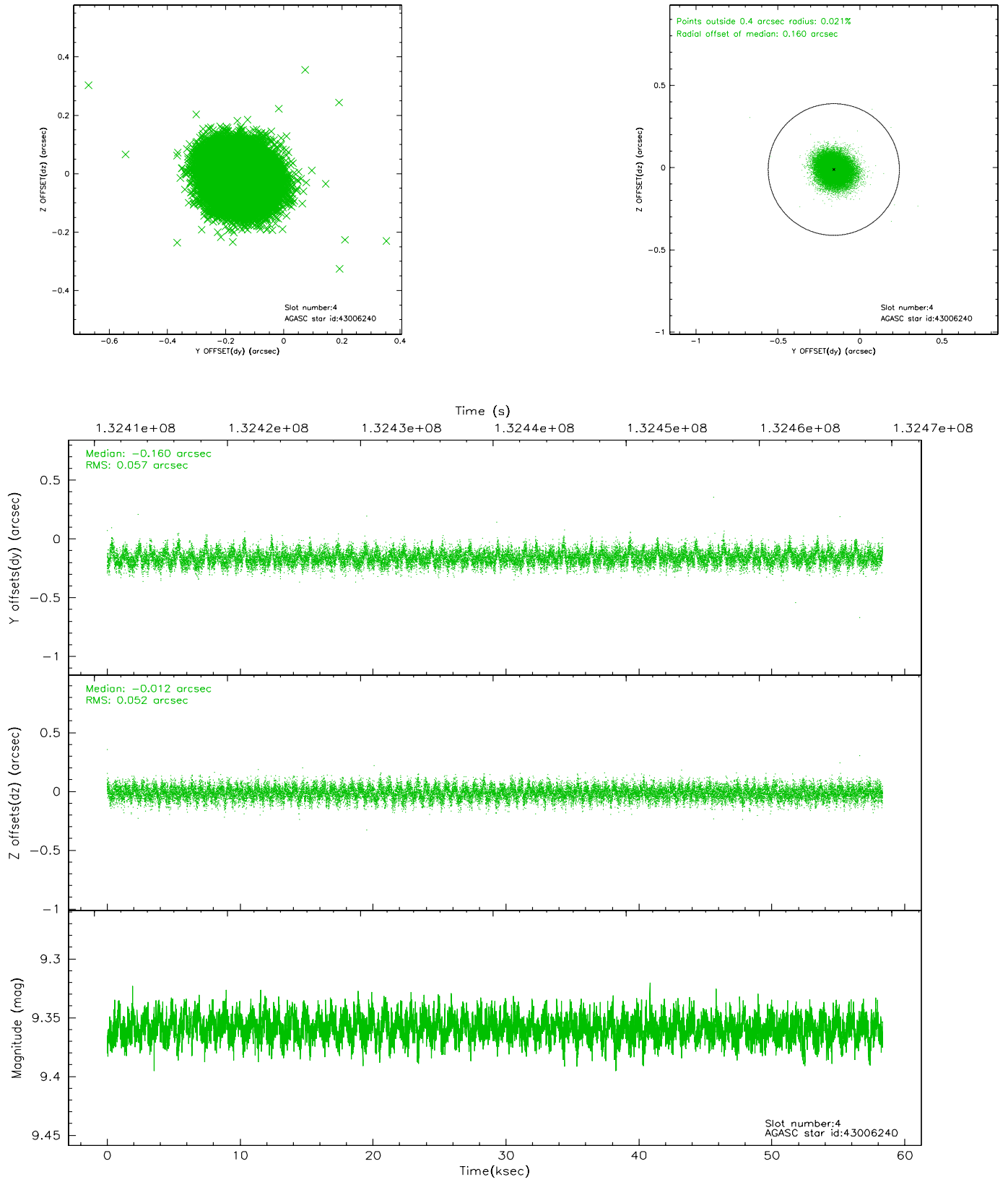
slot	status	id	mag	n_pts	med_dy	med_dz	dr1	dr2	ra	dec	mean_y	mean_z
0	FID	ACIS-I-1	7.25	14230	-0.028	0.038	0.009	0.036	0.000000	0.000000	937.24	-829.92
1	FID	ACIS-I-5	7.24	14230	-0.014	0.036	0.008	0.016	0.000000	0.000000	-1810.84	1067.64
2	FID	ACIS-I-6	7.26	14230	-0.050	-0.003	0.011	0.038	0.000000	0.000000	402.85	1712.01
3	GUIDE	43123992	9.17	28439	0.059	0.250	0.086	0.136	220.073183	3.041813	-1946.16	-1638.66
4	GUIDE	43006240	9.36	28448	-0.160	-0.012	0.082	0.133	219.423959	3.924387	1205.85	727.62
5	GUIDE	43001464	9.67	28419	0.155	-0.175	0.133	0.218	219.302574	2.996170	-2139.68	1129.55
6	OMITTED		0.00	0	0.000	0.000	0.000	0.000	0.000000	0.000000	0.00	0.00
7	GUIDE	42995240	9.70	28335	-0.055	-0.066	0.091	0.150	219.357101	3.408963	-652.13	948.92

2.4 Star Slots

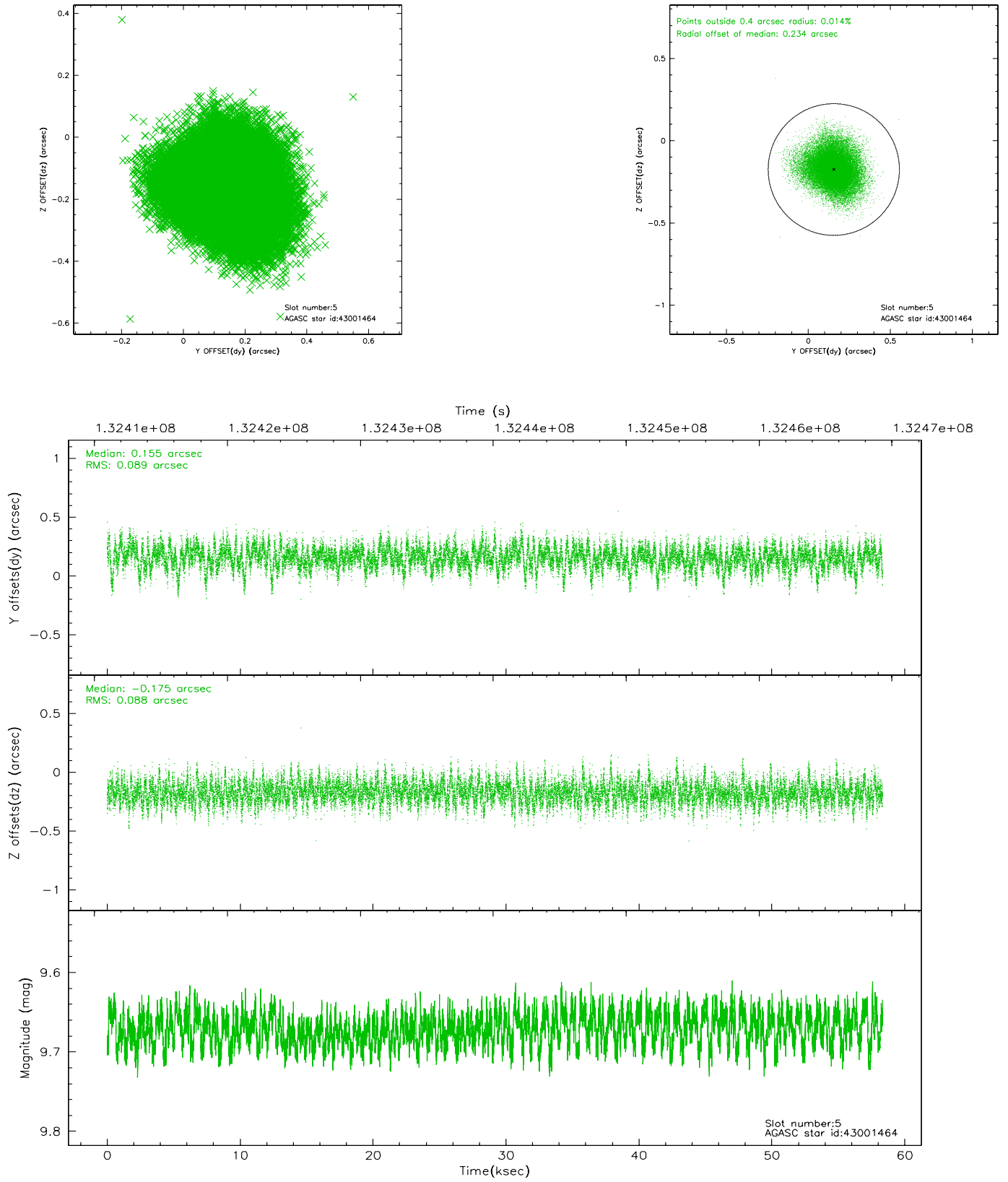
2.4.1 Slot 3



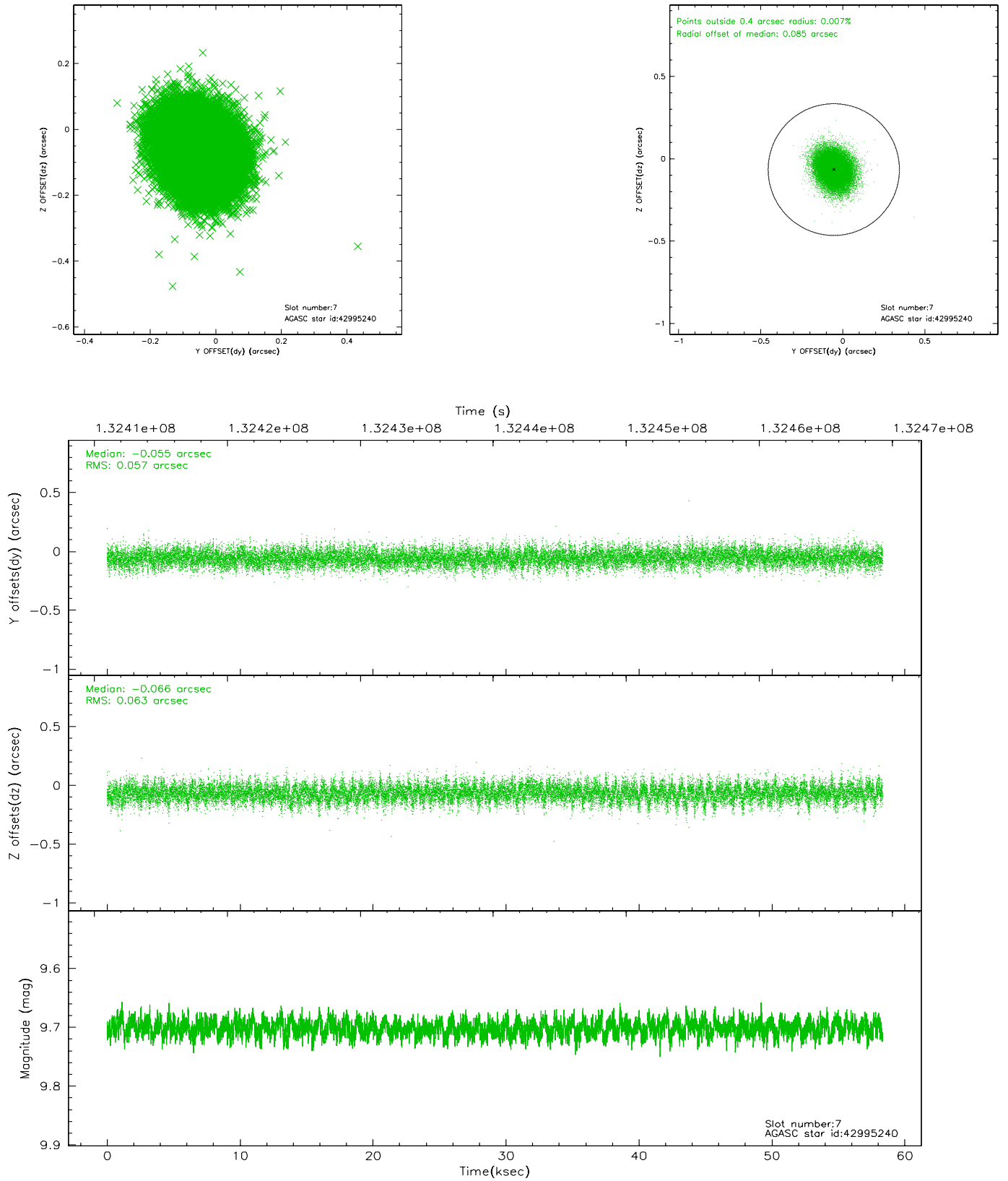
2.4.2 Slot 4



2.4.3 Slot 5

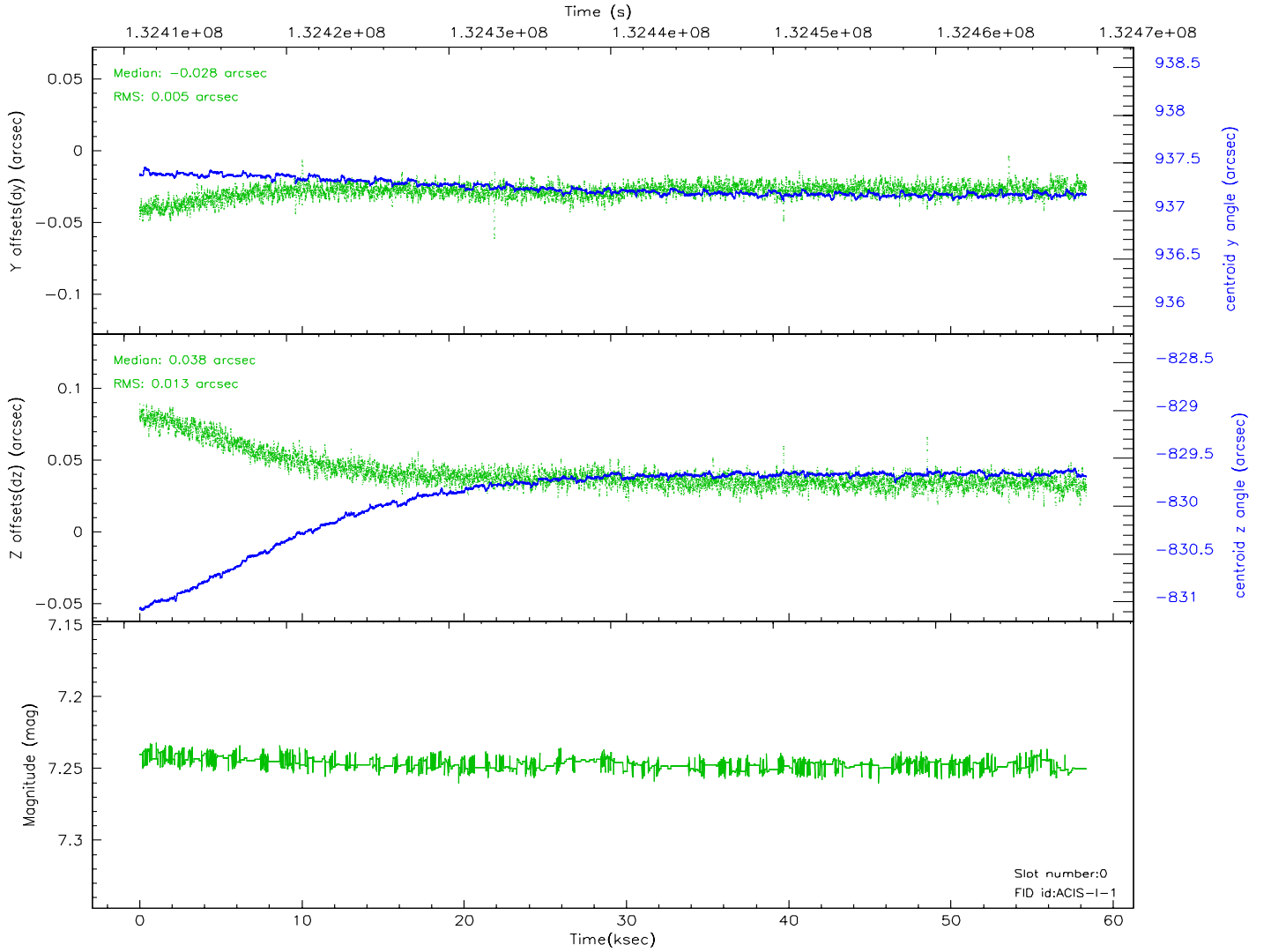
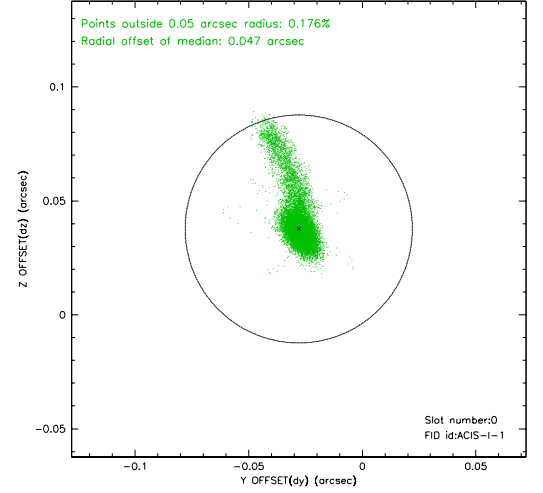
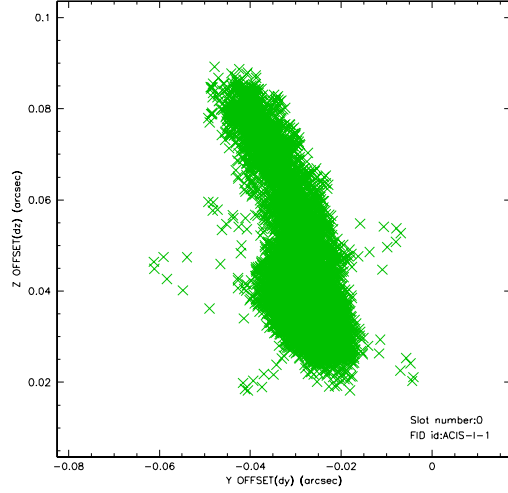


2.4.4 Slot 7

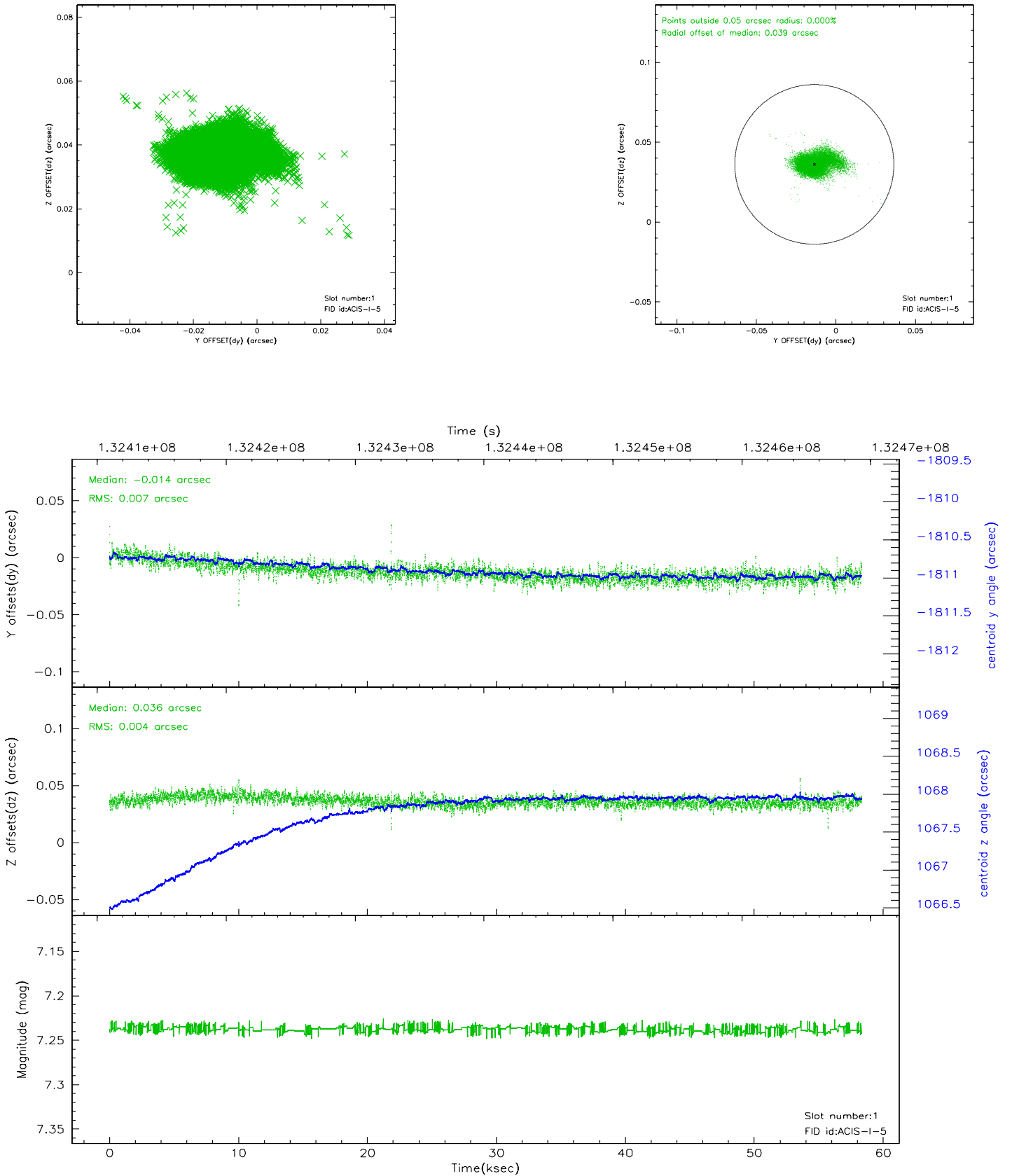


2.5 FID Slots

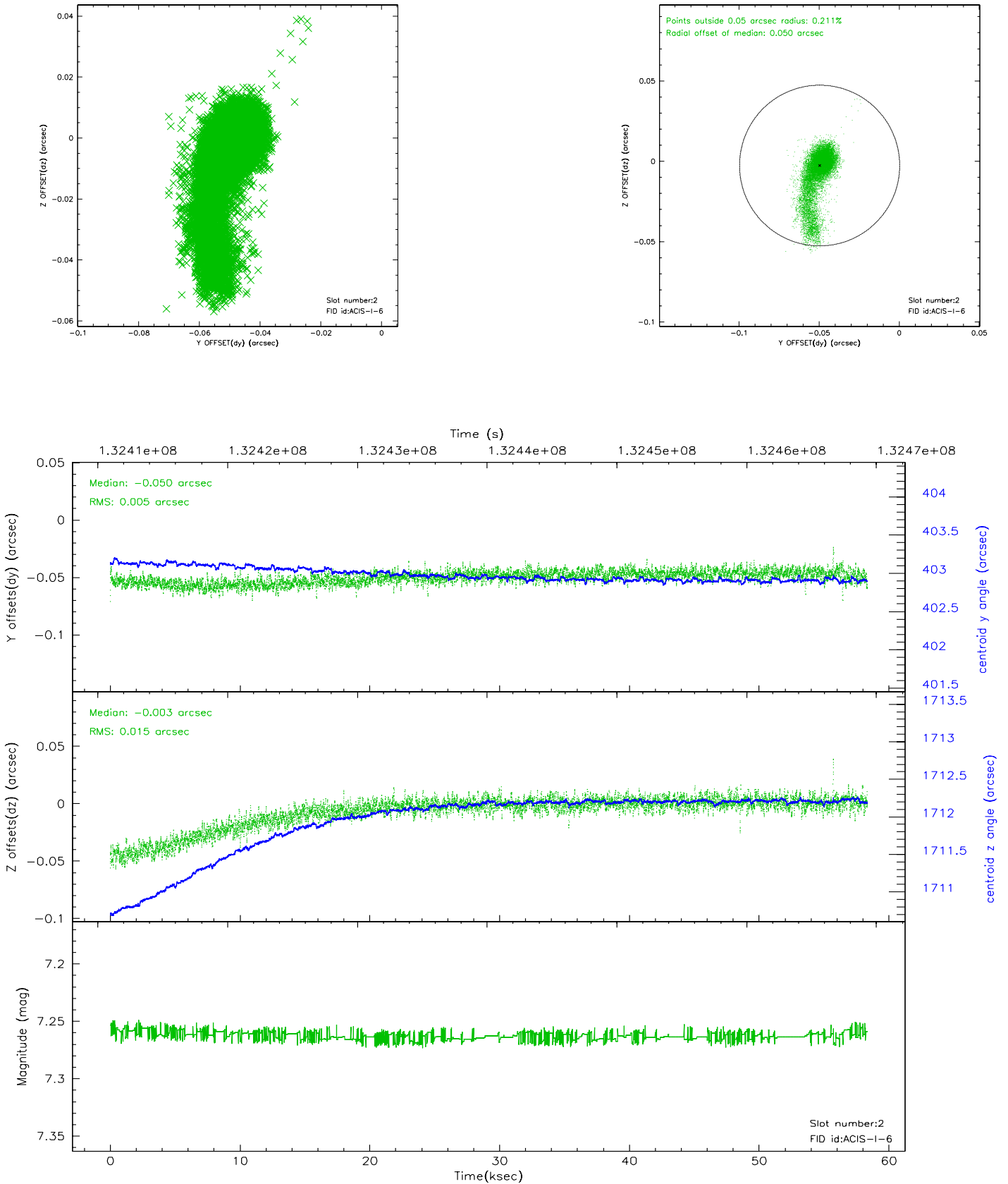
2.5.1 Slot 0



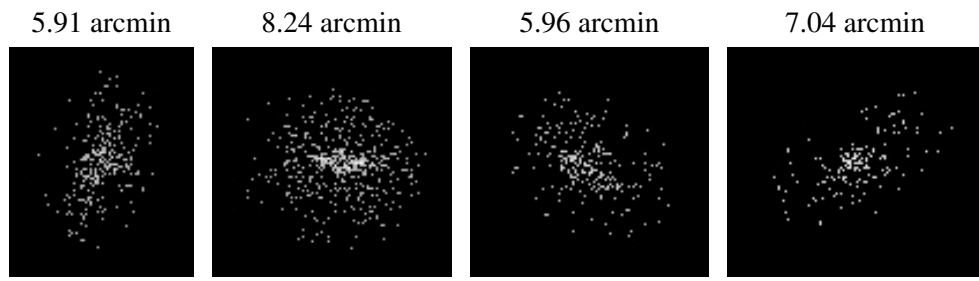
2.5.2 Slot 1



2.5.3 Slot 2



3 Point Sources



A Summary

A.1 Status

V&V Scientist	Joy Nichols
V&V Date (YYYY-MM-DD)	2006.09.07
V&V Edition	1
V&V Disposition and Status	OK
V&V Charge Time	58.335

A.2 Comments

Guide star in slot 6 was removed from the aspect solution due to poor tracking statistics. The quality of the aspect solution is not expected to be affected by the removal of 1 guide star from the pointing solution.