

# V&V Reference Report

## L2 ASCDS Version : 7.6.9

Observation 3220 - L2 Version 001  
Chandra X-Ray Center

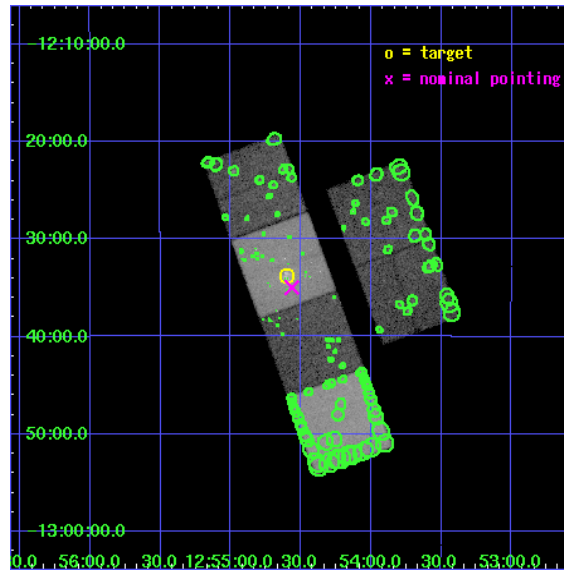
L2 Processing Date : Sep 19 2006

## Contents

<b>1</b>	<b>Front</b>	<b>2</b>
<b>2</b>	<b>OBI</b>	<b>3</b>
2.1	OBI . . . . .	3
2.1.1	Images . . . . .	3
2.1.2	Bias . . . . .	3
2.1.3	Parameters . . . . .	4
2.1.4	Events . . . . .	4
2.2	Compared Parameters . . . . .	5
2.3	Aspect . . . . .	6
2.4	Star Slots . . . . .	9
2.4.1	Slot 3 . . . . .	9
2.4.2	Slot 4 . . . . .	10
2.4.3	Slot 5 . . . . .	11
2.4.4	Slot 6 . . . . .	12
2.4.5	Slot 7 . . . . .	13
2.5	FID Slots . . . . .	14
2.5.1	Slot 0 . . . . .	14
2.5.2	Slot 1 . . . . .	15
2.5.3	Slot 2 . . . . .	16
<b>3</b>	<b>Point Sources</b>	<b>17</b>
<b>A</b>	<b>Summary</b>	<b>18</b>
A.1	Status . . . . .	18
A.2	Comments . . . . .	18

# 1 Front

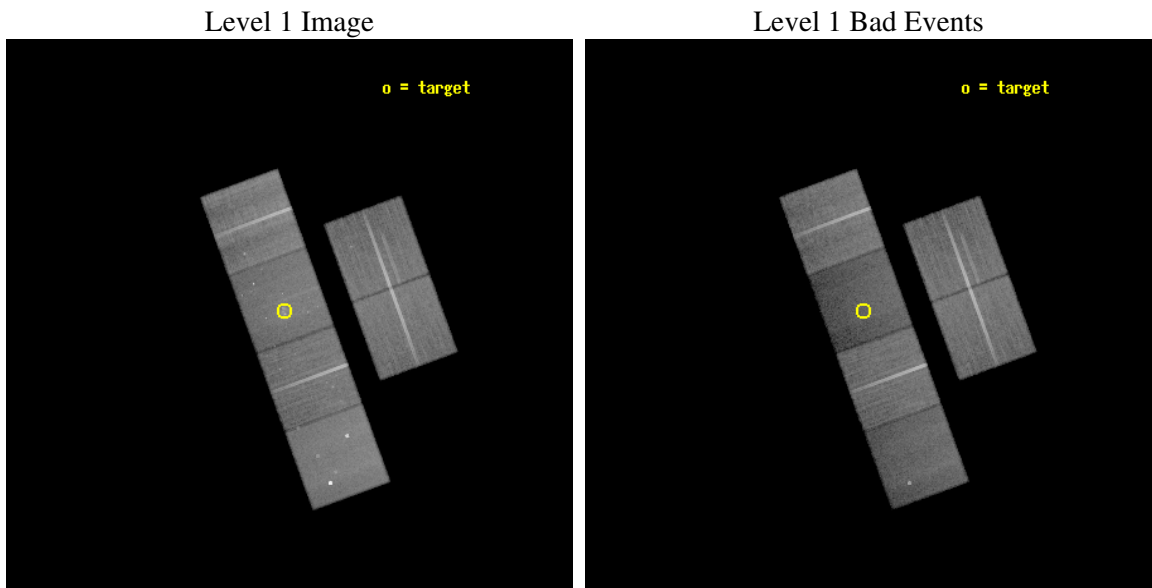
seq_num	800220
obs_id	3220
title	THE PUZZLING DUMB-BELL GALAXY NDC 4782/3: GALACTIC WAKES VERSUS BENT JETS
observer	Dr Irini Sakelliou
object	NGC 4782/3
dtcycle	0
cycle	P
ra_targ	193.65
dec_targ	-12.563889
ra_nom	193.64103973659
dec_nom	-12.582748570952
roll_nom	249.90090487611
revision	2
ontime	49958.358843625
livetime	49325.756022634
ontime2	49945.394972622
ontime3	49955.117913246
ontime5	49958.358843625
ontime6	49958.358843625
ontime7	49958.358843625
ontime8	49958.358853608
l2events	352097



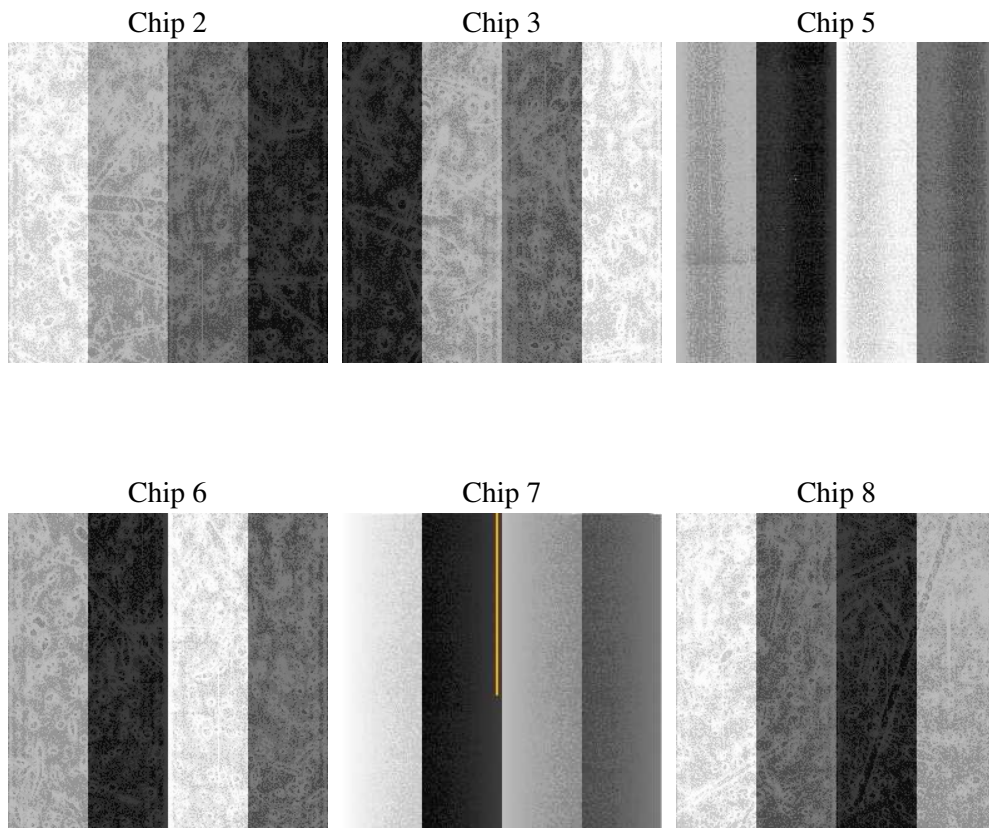
## 2 OBI

### 2.1 OBI

#### 2.1.1 Images



#### 2.1.2 Bias



### 2.1.3 Parameters

obi_num	0
ascdsver	7.6.9
caldsver	3.2.3
date	2006-09-19T16:48:44
revision	2

sched_exp_time	50000.000000
ontime	49963.265254259
ontime2	49950.301383257
ontime3	49960.024323881
ontime5	49963.265274167
ontime6	49963.265254259
ontime7	49963.265254259
ontime8	49963.265264243
l1events	1634519

### 2.1.4 Events

	ccd 2	ccd 3	ccd 5	ccd 6	ccd 7	ccd 8
level 1 events	268065	251192	305369	255579	246211	308103
rejected events	243245	227226	144405	226926	123205	239679
rejected %	90%	90%	47%	88%	50%	77%

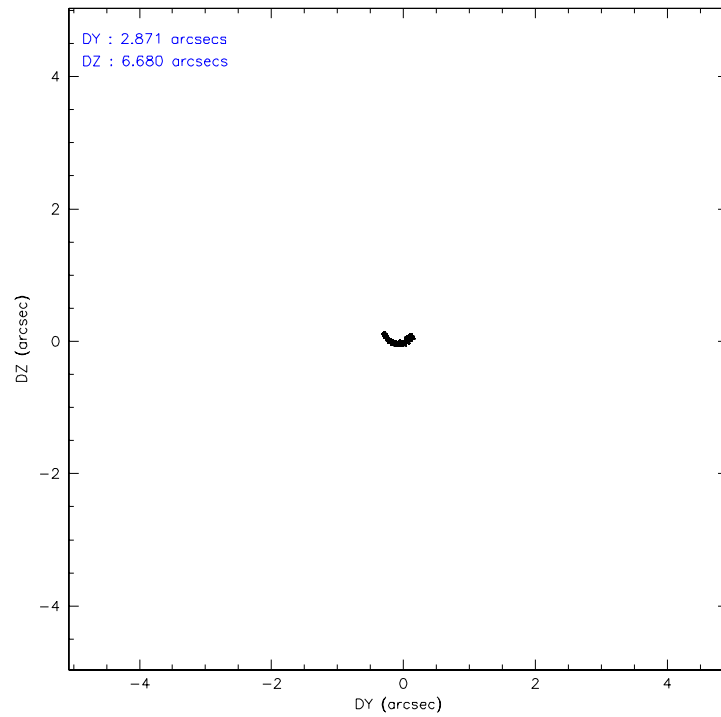
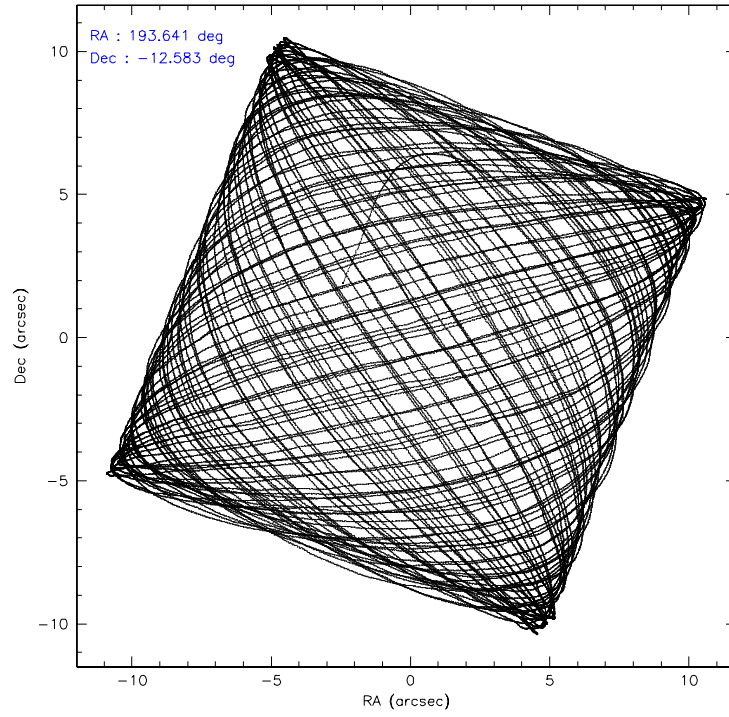
	ccd 2	ccd 3	ccd 5	ccd 6	ccd 7	ccd 8
grade 0 events	9668	9569	18500	12136	13244	20485
	3%	3%	6%	4%	5%	6%
grade 1 events	127	118	1400	143	133	198
	0%	0%	0%	0%	0%	0%
grade 2 events	5736	4865	52919	5583	31820	15348
	2%	1%	17%	2%	12%	4%
grade 3 events	2515	2743	4366	2996	8822	7426
	0%	1%	1%	1%	3%	2%
grade 4 events	2630	2636	4161	2899	8777	6971
	0%	1%	1%	1%	3%	2%
grade 5 events	6679	7556	16219	8137	18866	12049
	2%	3%	5%	3%	7%	3%
grade 6 events	4273	4153	81034	5041	60358	18195
	1%	1%	26%	1%	24%	5%
grade 7 events	236437	219552	126770	218644	104191	227431
	88%	87%	41%	85%	42%	73%

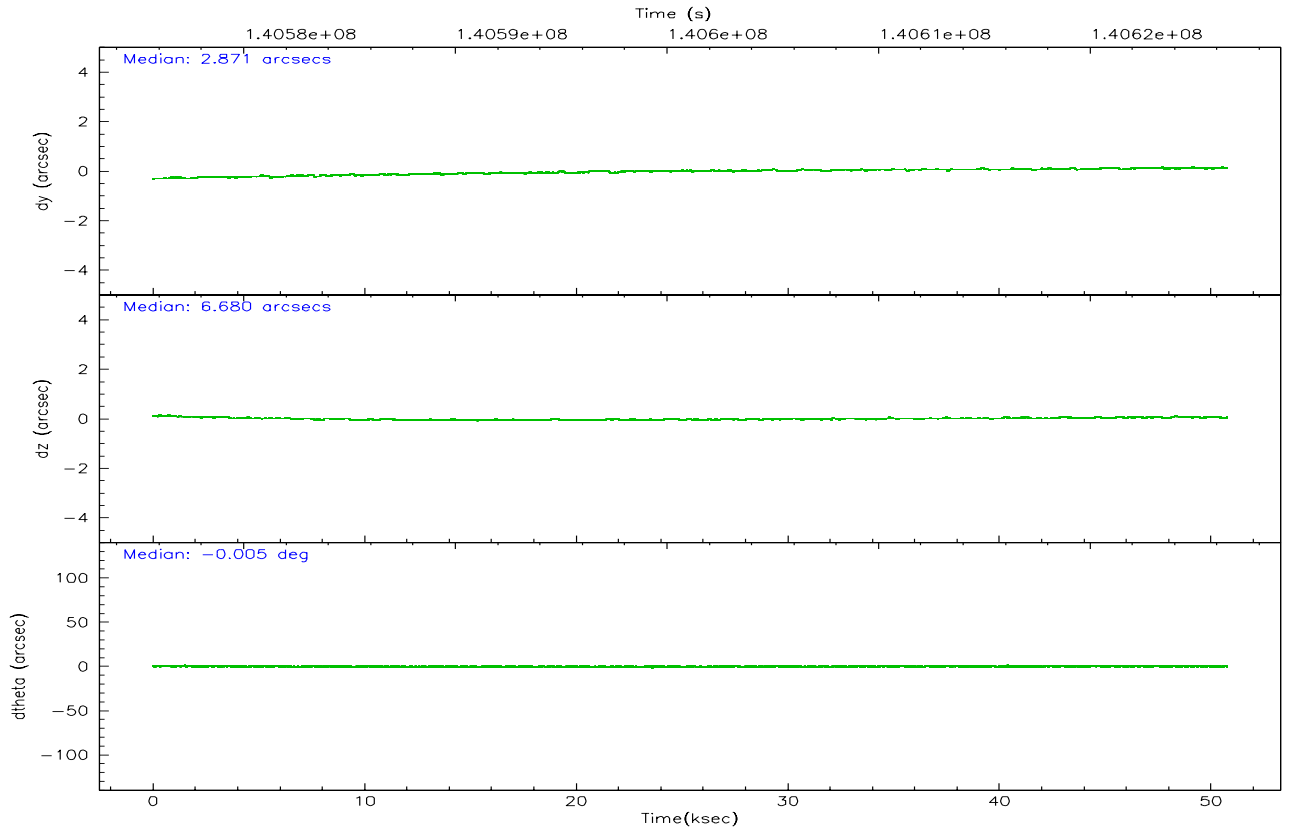
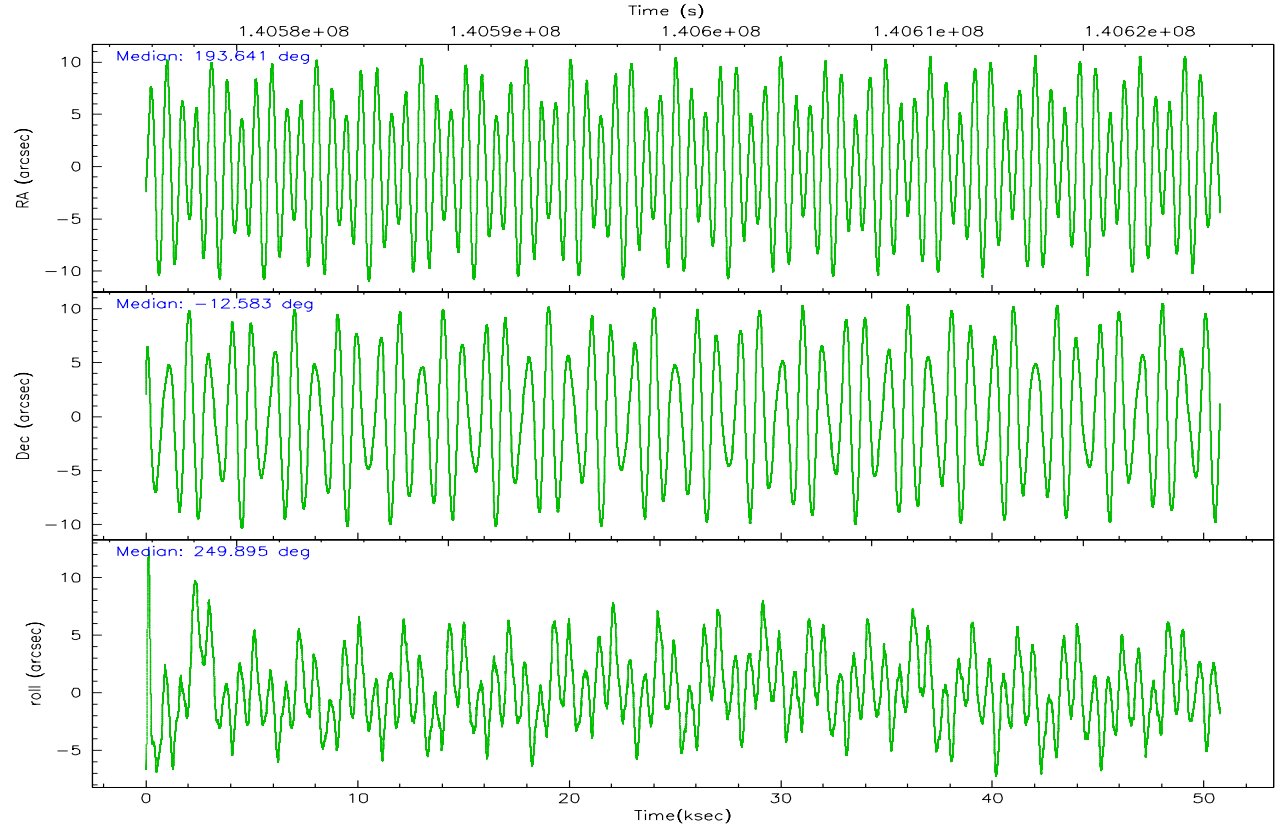


## 2.2 Compared Parameters

Parameter	Planned	Actual	Parameter	Planned	Actual
Instrument	ACIS	ACIS	Obspar format version number	6	6
Detector	ACIS-235678	ACIS-235678	Obspar file type	PREDICTED	ACTUAL
Grating	NONE	NONE	Obspar update status	NONE	UPDATED
Data mode	VFAINT	VFAINT	Number of optional ACIS chips dropped	0	0
Observation mode	POINTING	POINTING	On-chip summing requested	N	N
Pointing RA	193.635886	193.6410397365912	Subarray requested	NONE	NONE
Pointing Dec	-12.555961	-12.58274857095199	Alternating exposures requested	N	N
Pointing Roll	249.743158	249.9009048761126	Primary exposure time	0.000000	3.2
SIM focus pos (mm)	-0.684267	-0.6828225247311905			
SIM defocus (mm)	0	0.001444936568705701			
SIM translation stage pos (mm)	-190.132523	-190.1400660498719			
SIM translation stage offset (mm)	0	0.00754346686406393			
Observation start time	140576480.184000	140575230.11848			
Observation start date	2002-06-16T01:00:16	2002-06-16T00:40:30			
Observation end time	140626480.184000	140626935.73309			
Observation end date	2002-06-16T14:53:36	2002-06-16T15:02:15			
Read mode	TIMED	TIMED			

## 2.3 Aspect



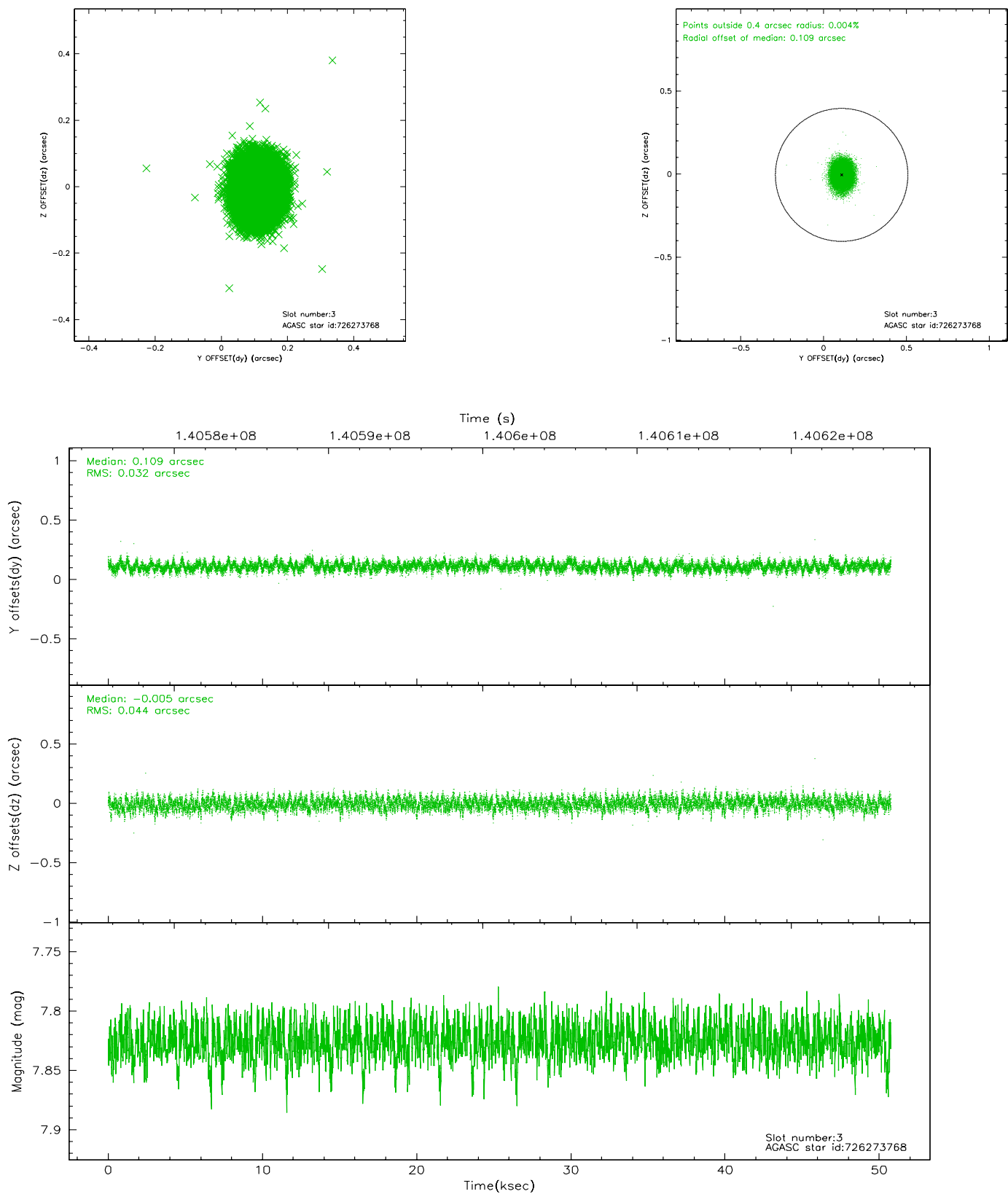


### Slot Statistics

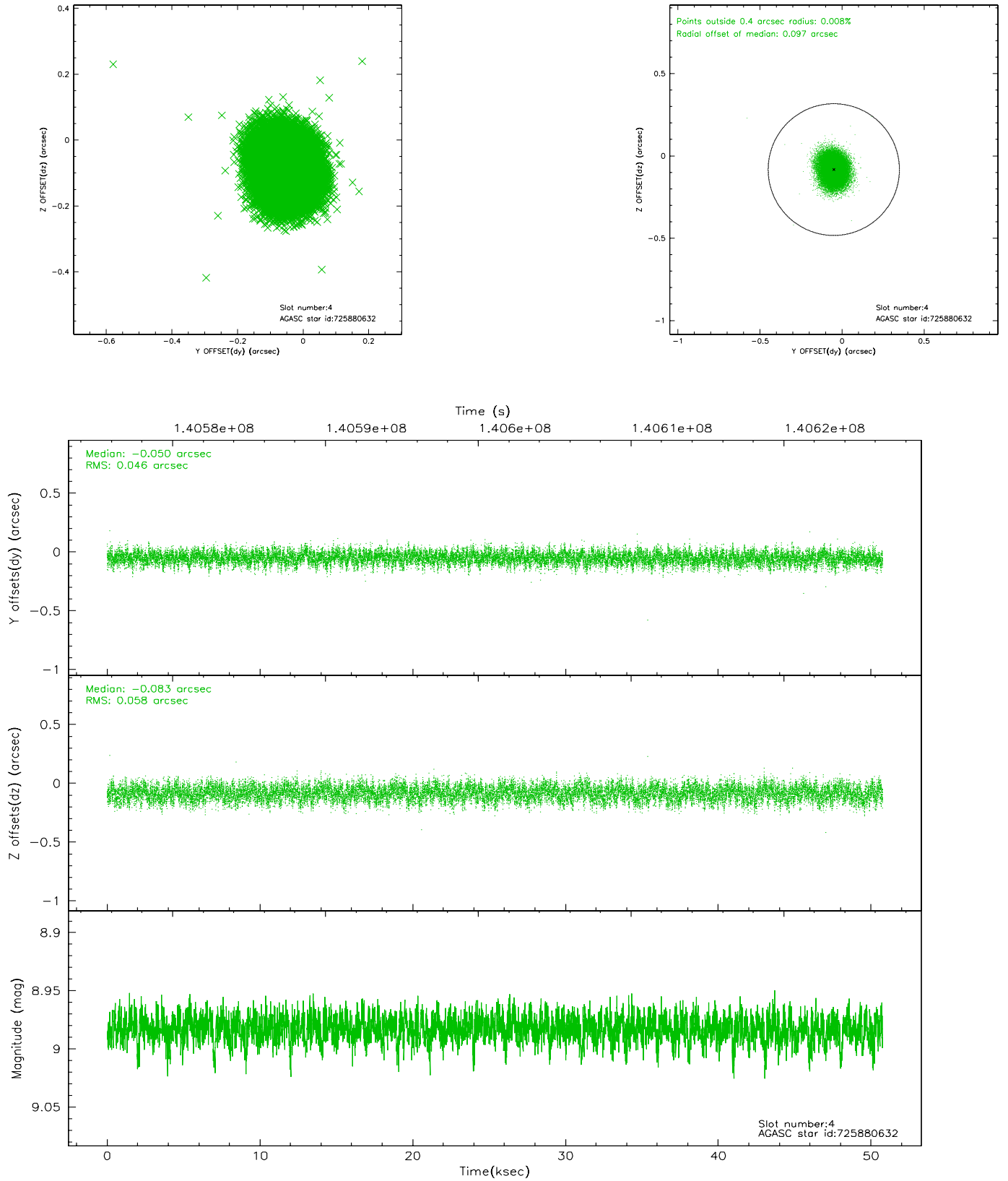
slot	status	id	mag	n_pts	med_dy	med_dz	dr1	dr2	ra	dec	mean_y	mean_z
0	FID	ACIS-S-2	7.11	12381	-0.011	0.034	0.008	0.013	0.000000	0.000000	-755.47	-1727.82
1	FID	ACIS-S-4	7.20	12378	-0.064	-0.004	0.009	0.016	0.000000	0.000000	2157.74	180.68
2	FID	ACIS-S-5	7.24	12381	0.044	-0.021	0.009	0.015	0.000000	0.000000	-1808.31	174.26
3	GUIDE	726273768	7.83	24763	0.109	-0.005	0.058	0.095	193.607129	-12.937434	1323.33	381.75
4	GUIDE	725880632	8.98	24752	-0.050	-0.083	0.080	0.126	193.296522	-11.921361	-1728.72	-1911.50
5	GUIDE	725880192	10.41	24656	-0.051	-0.013	0.162	0.267	193.106137	-12.437943	247.85	-1892.80
6	GUIDE	726273064	9.98	24744	0.112	0.151	0.131	0.213	193.968902	-12.957698	952.80	1598.14
7	GUIDE	725877928	9.18	24746	-0.116	-0.046	0.086	0.137	193.924409	-12.049240	-2062.75	322.31

## 2.4 Star Slots

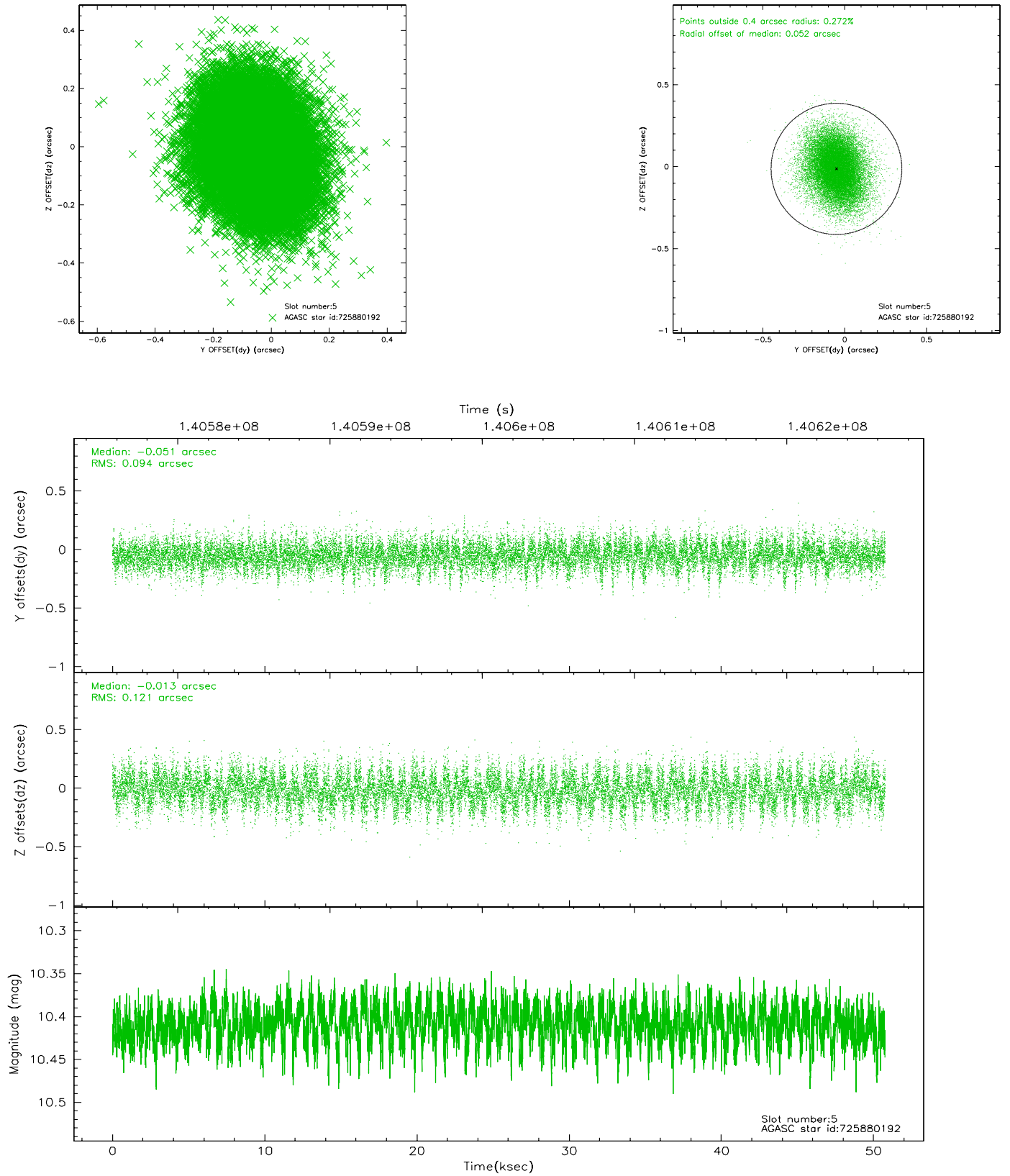
### 2.4.1 Slot 3



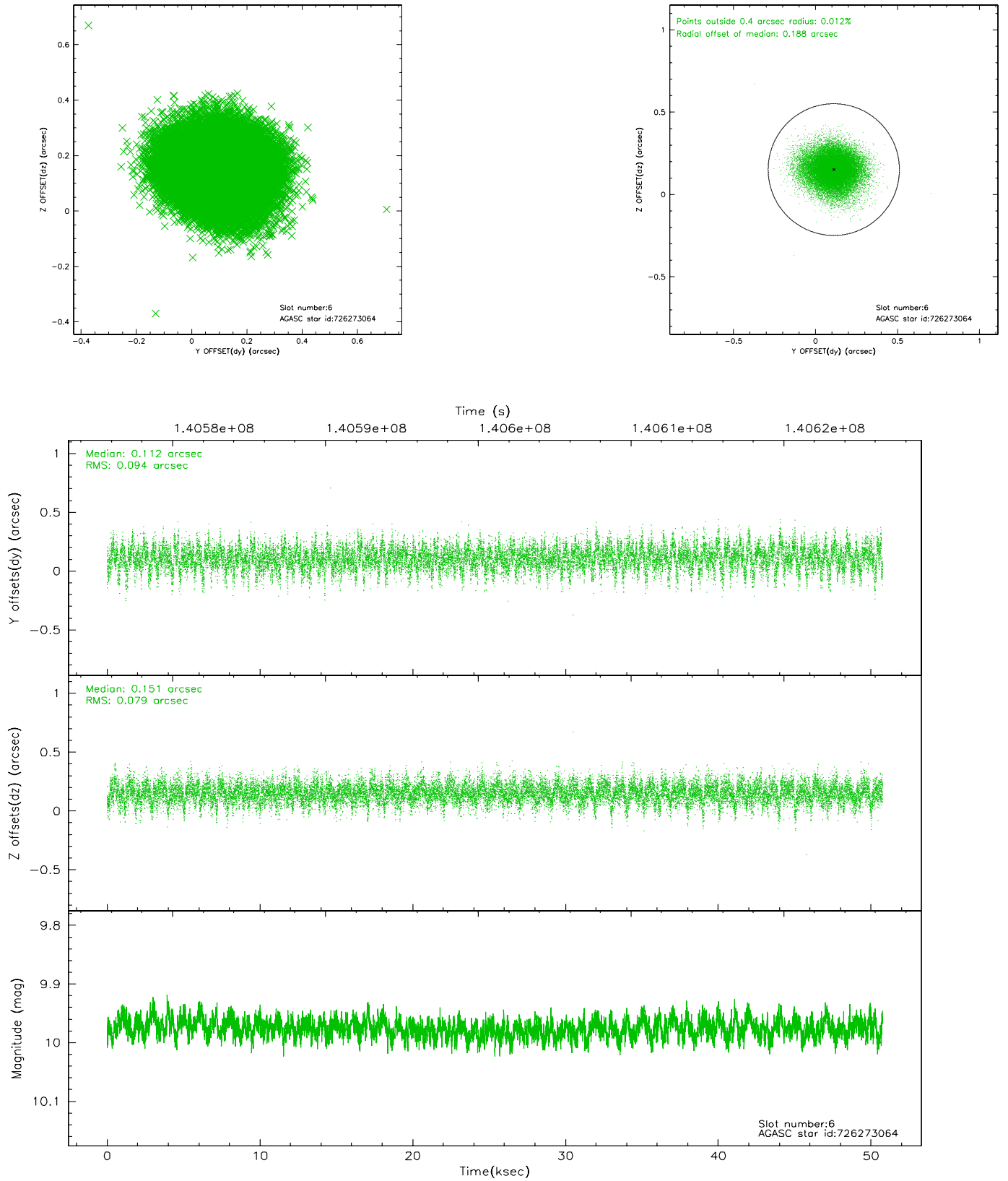
## 2.4.2 Slot 4



### 2.4.3 Slot 5

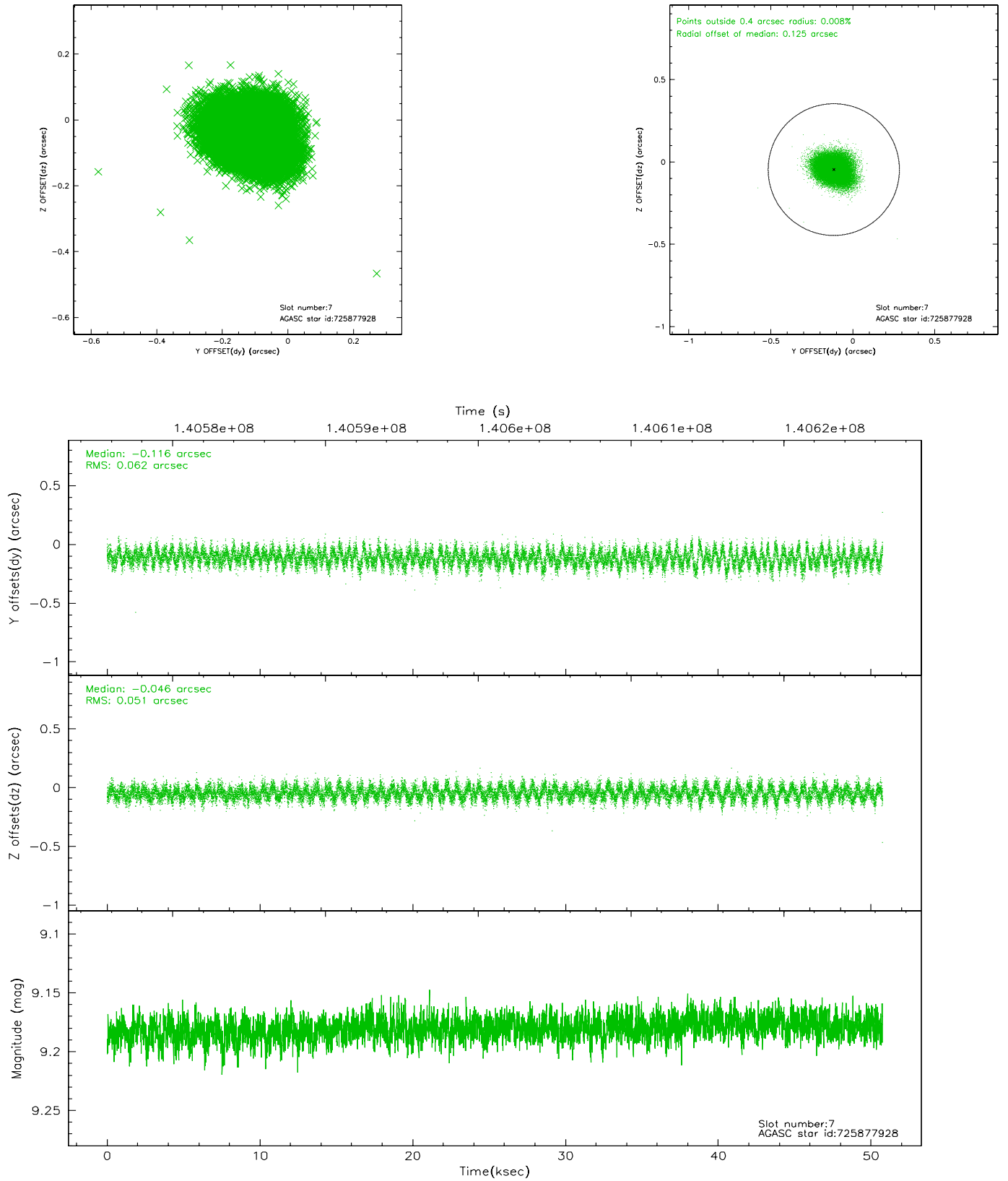


## 2.4.4 Slot 6



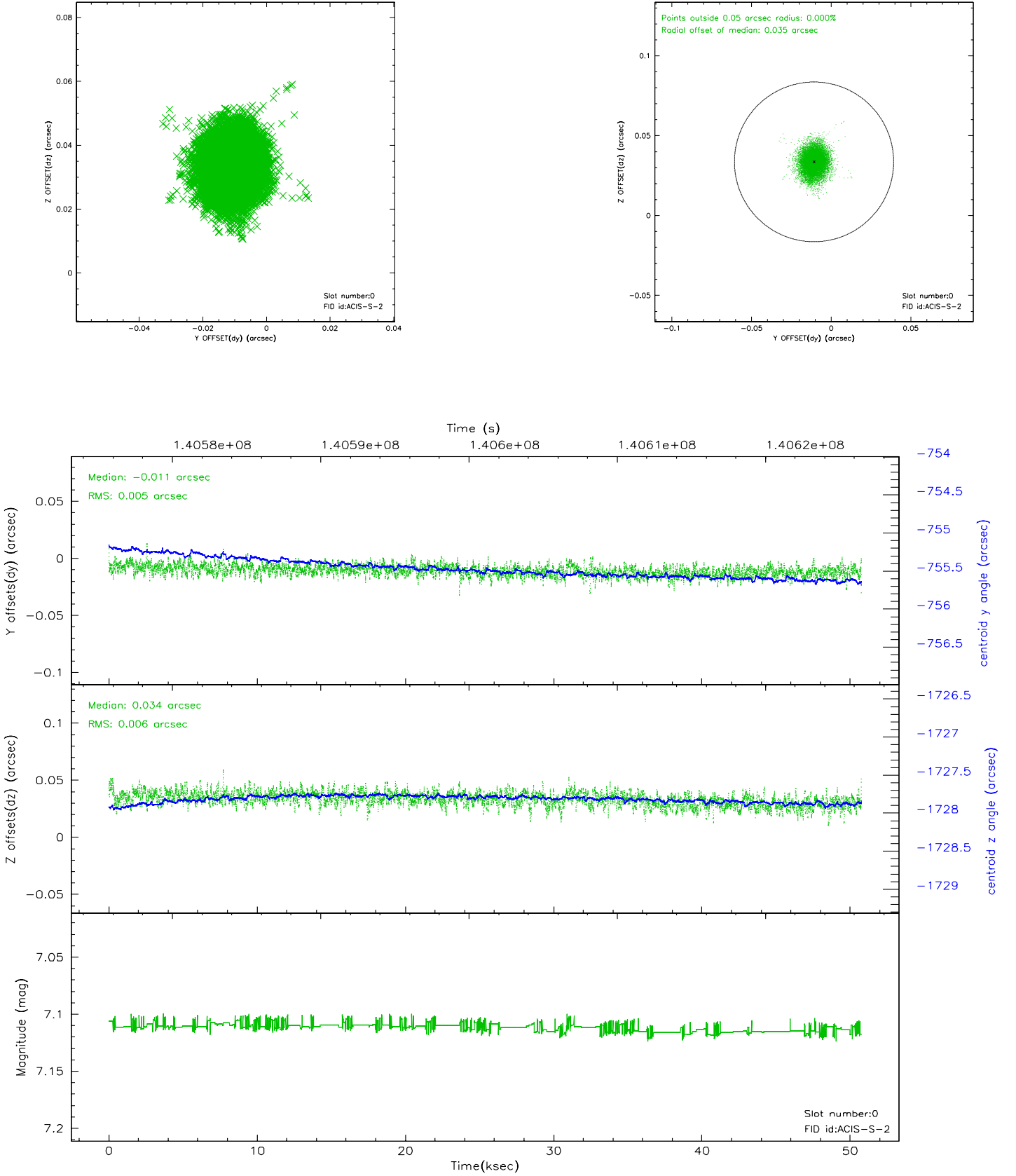


## 2.4.5 Slot 7

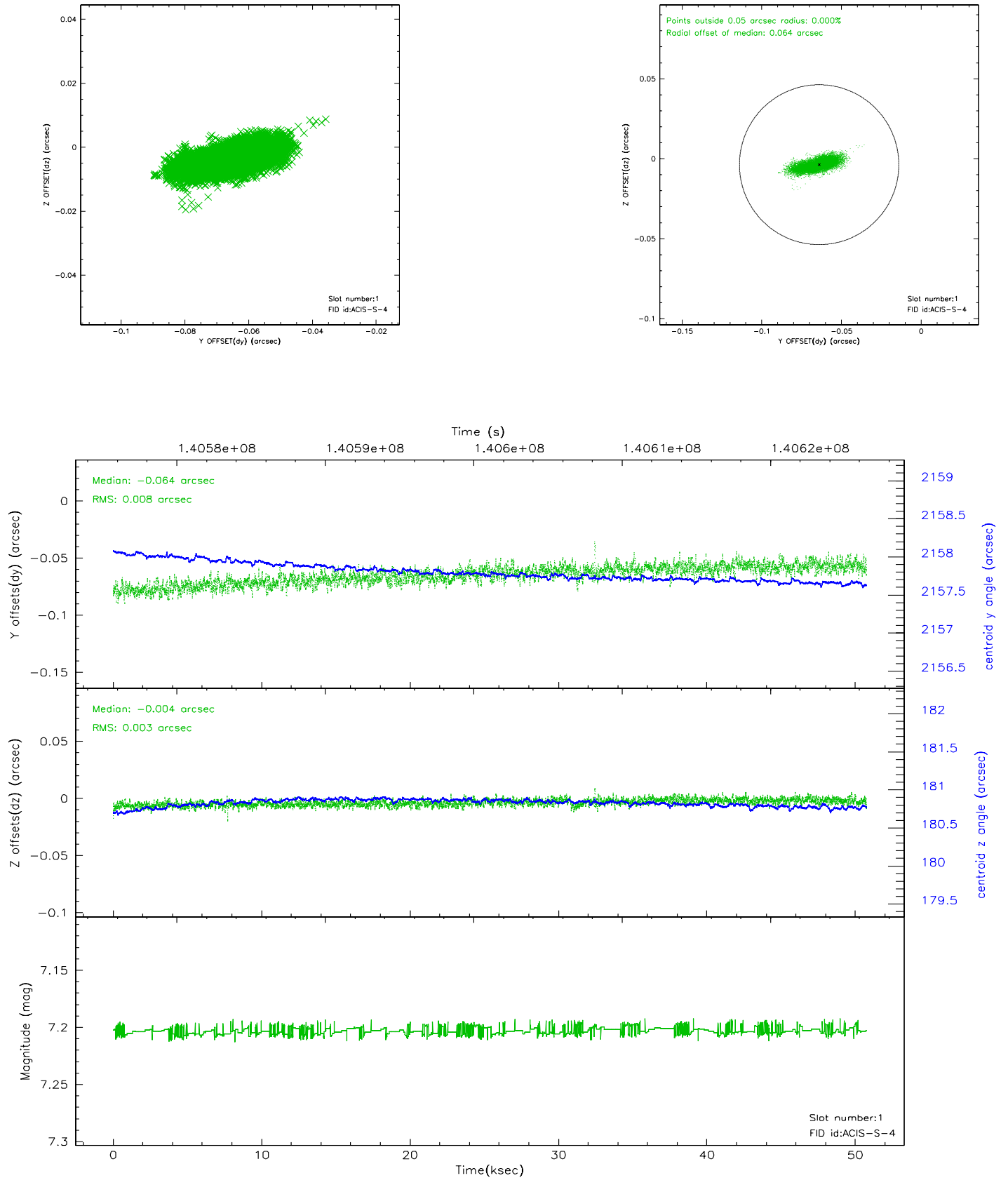


## 2.5 FID Slots

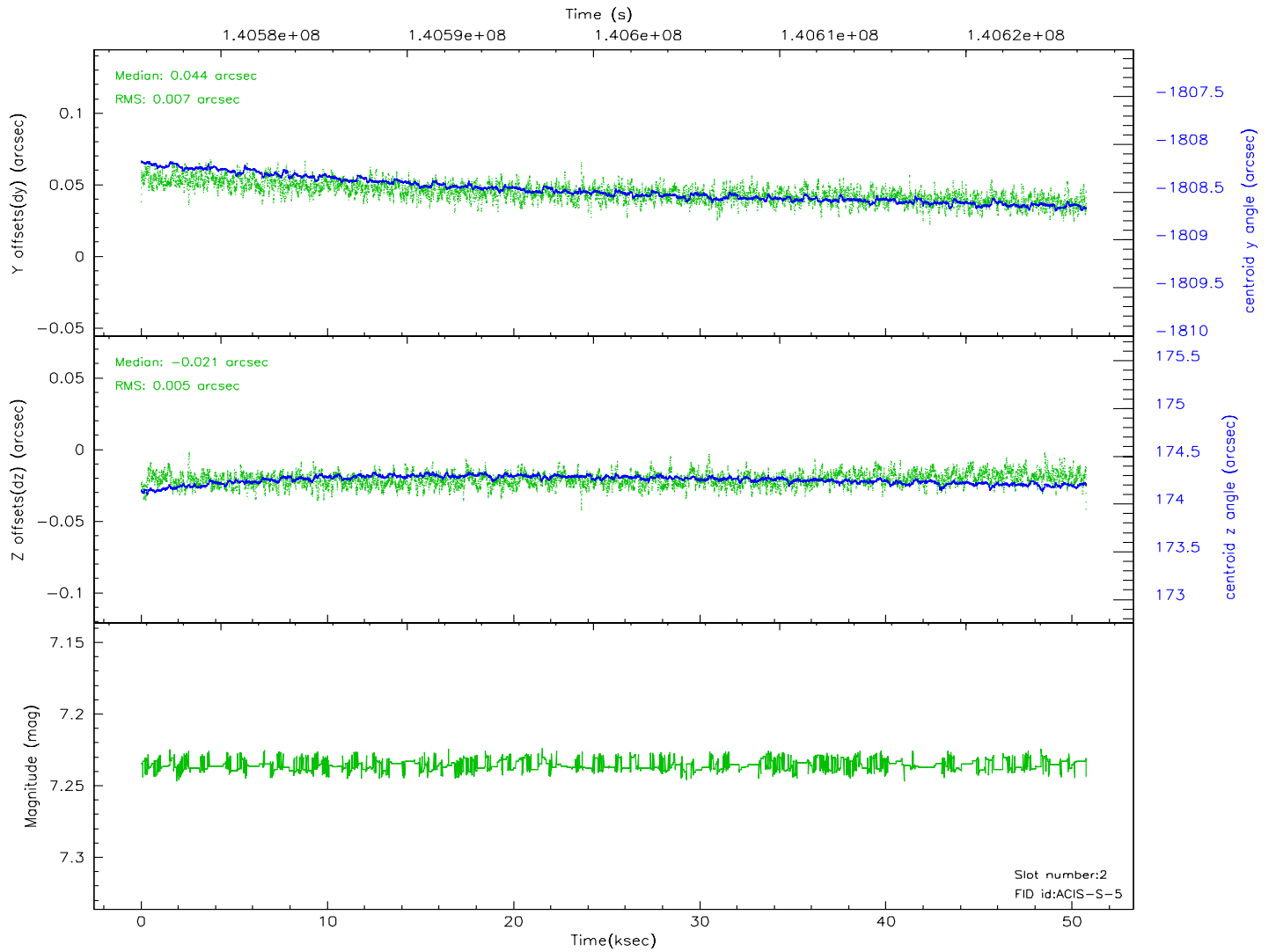
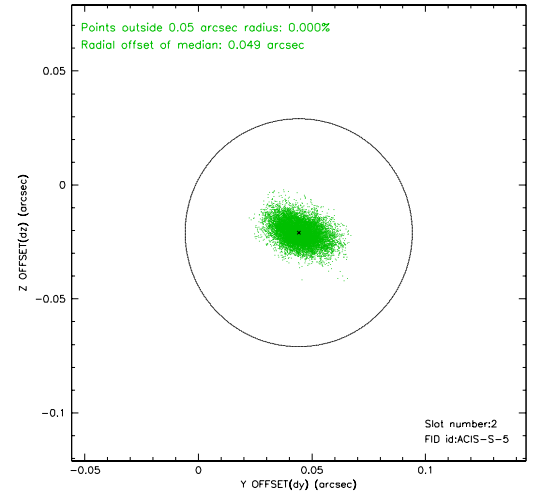
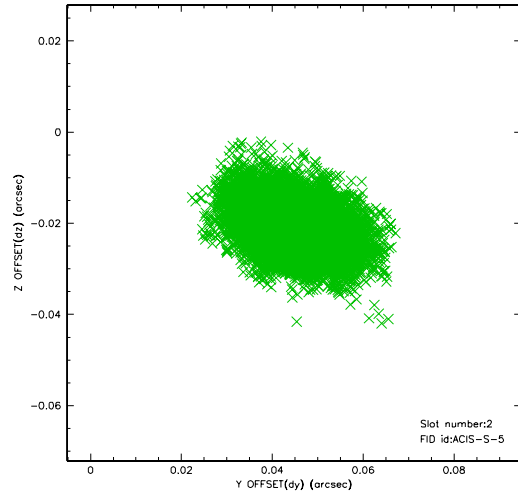
### 2.5.1 Slot 0



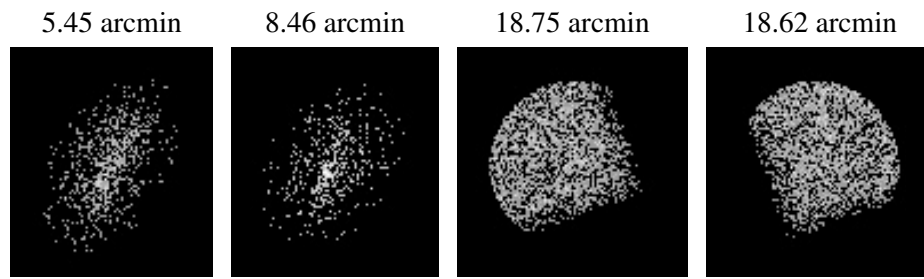
## 2.5.2 Slot 1



### 2.5.3 Slot 2



### 3 Point Sources



## A Summary

### A.1 Status

V&V Scientist	Beth Sundheim
V&V Date (YYYY-MM-DD)	2006.09.19
V&V Edition	1
V&V Disposition and Status	OK
V&V Charge Time	49.961

### A.2 Comments