

V&V Reference Report

L2 ASCDS Version : 8.4.5

Observation 3140 - L2 Version 3
Chandra X-Ray Center

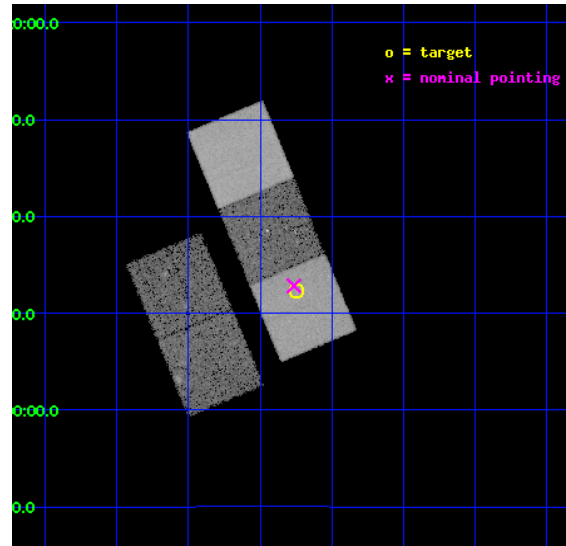
L2 Processing Date : Oct 18 2012

Contents

1	Front	2
2	OBI	3
2.1	OBI	3
2.1.1	Images	3
2.1.2	Bias	3
2.1.3	Parameters	4
2.1.4	Events	4
2.2	Compared Parameters	5
2.3	Aspect	6
2.4	Star Slots	9
2.4.1	Slot 3	9
2.4.2	Slot 4	10
2.4.3	Slot 5	11
2.4.4	Slot 6	12
2.4.5	Slot 7	13
2.5	FID Slots	14
2.5.1	Slot 0	14
2.5.2	Slot 1	15
2.5.3	Slot 2	16
A	Summary	17
A.1	Status	17
A.2	Comments	17

1 Front

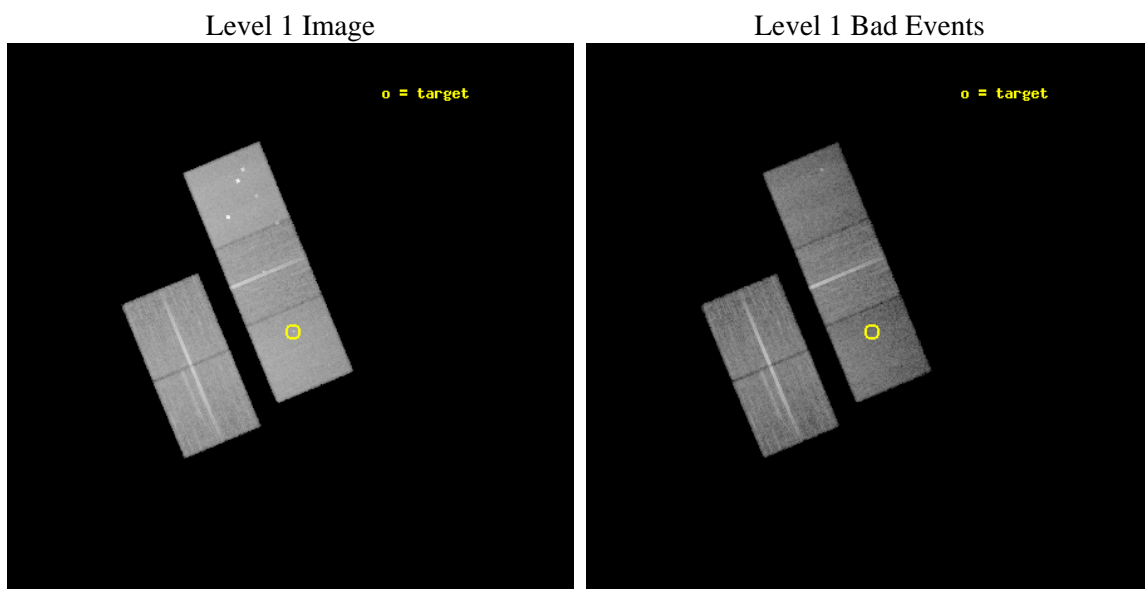
seq_num	700579	Sequence number
obs_id	3140	Observation id
title	PROBING THE X-RAY EMISSION OF HIGH LUMINOSITY EMISSION LINE GALAXIES: QUASAR-2s AND THE STARBURST-AGN CONNECTION	Proposal title
observer	Prof. Paolo Coppi	Principal investigator
object	QUEST 1155-0147	Source name
dtcycle	0	
cycle	P	events from which exps? Prim/Second/Both
ra_targ	178.935833	Observer's specified target RA [deg]
dec_targ	-1.794389	Observer's specified target Dec [deg]
ra_nom	178.94106656843	Nominal RA [deg]
dec_nom	-1.7862648317741	Nominal Dec [deg]
roll_nom	67.422277106979	Nominal Roll [deg]
revision	3	Processing version of data
ontime	30125.799942046	Sum of GTIs [s]
livetime	29732.184187512	Livetime [s]
ontime2	30125.799942046	Sum of GTIs [s]
ontime3	30125.799942046	Sum of GTIs [s]
ontime5	30125.799942046	Sum of GTIs [s]
ontime6	30125.799942046	Sum of GTIs [s]
ontime7	30125.799942046	Sum of GTIs [s]
l2events	212976	Number of level 2 events



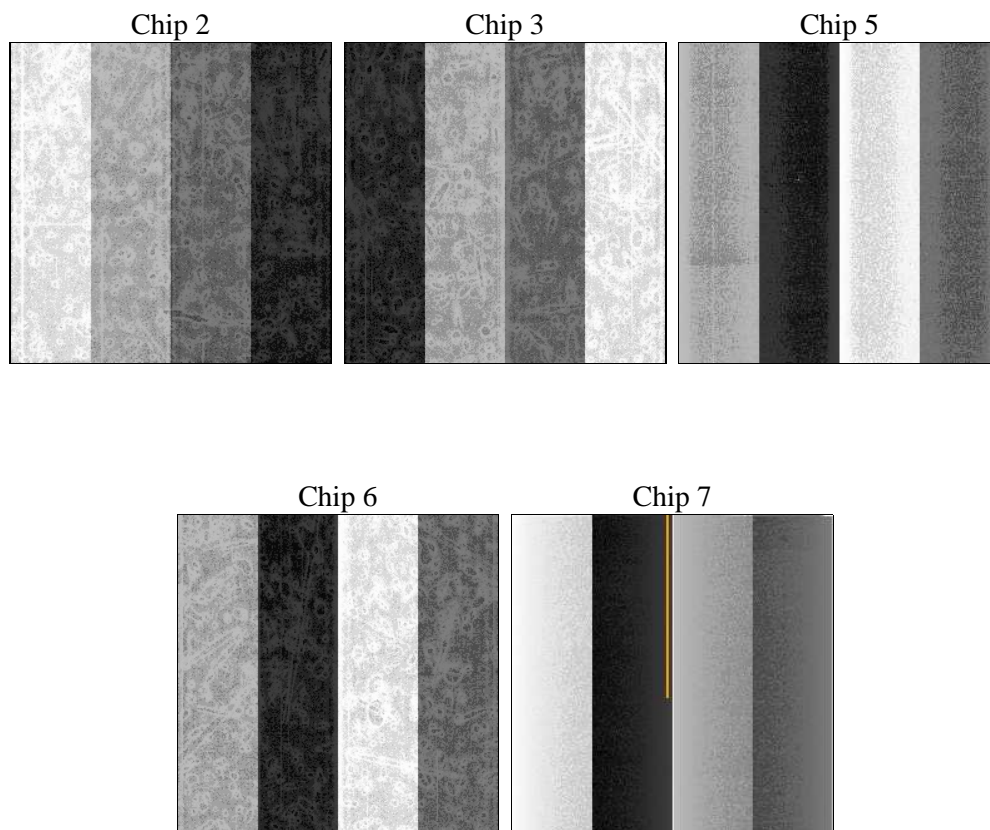
2 OBI

2.1 OBI

2.1.1 Images



2.1.2 Bias



2.1.3 Parameters

obi_num	1	Obi number	sched_exp_time	30000.000000	[s] Scheduled observation exposure time
ascdsver	8.4.5	Processing system revision	ontime	30125.799942046	Sum of GTIs [s]
caldsver	4.5.2	 	ontime2	30125.799942046	Sum of GTIs [s]
date	2012-10-18T11:37:12	Date and time of file creation	ontime3	30125.799942046	Sum of GTIs [s]
revision	3	Processing version of data	ontime5	30125.799942046	Sum of GTIs [s]
			ontime6	30125.799942046	Sum of GTIs [s]
			ontime7	30125.799942046	Sum of GTIs [s]
			l1events	877611	Number of level 1 events

2.1.4 Events

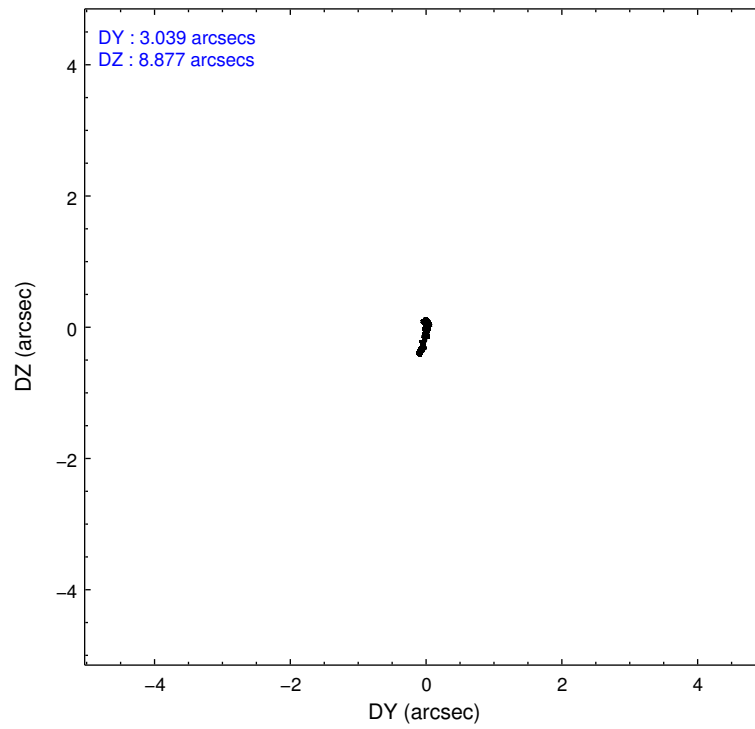
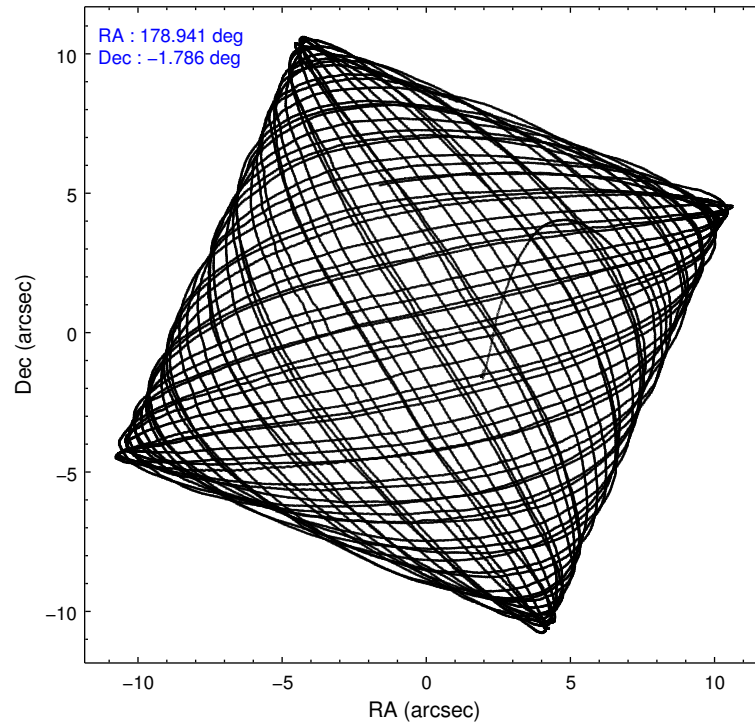
	ccd 2	ccd 3	ccd 5	ccd 6	ccd 7
level 1 events	161770	158764	220493	161388	175196
rejected events	146963	144226	107967	144694	95251
rejected %	90%	90%	48%	89%	54%

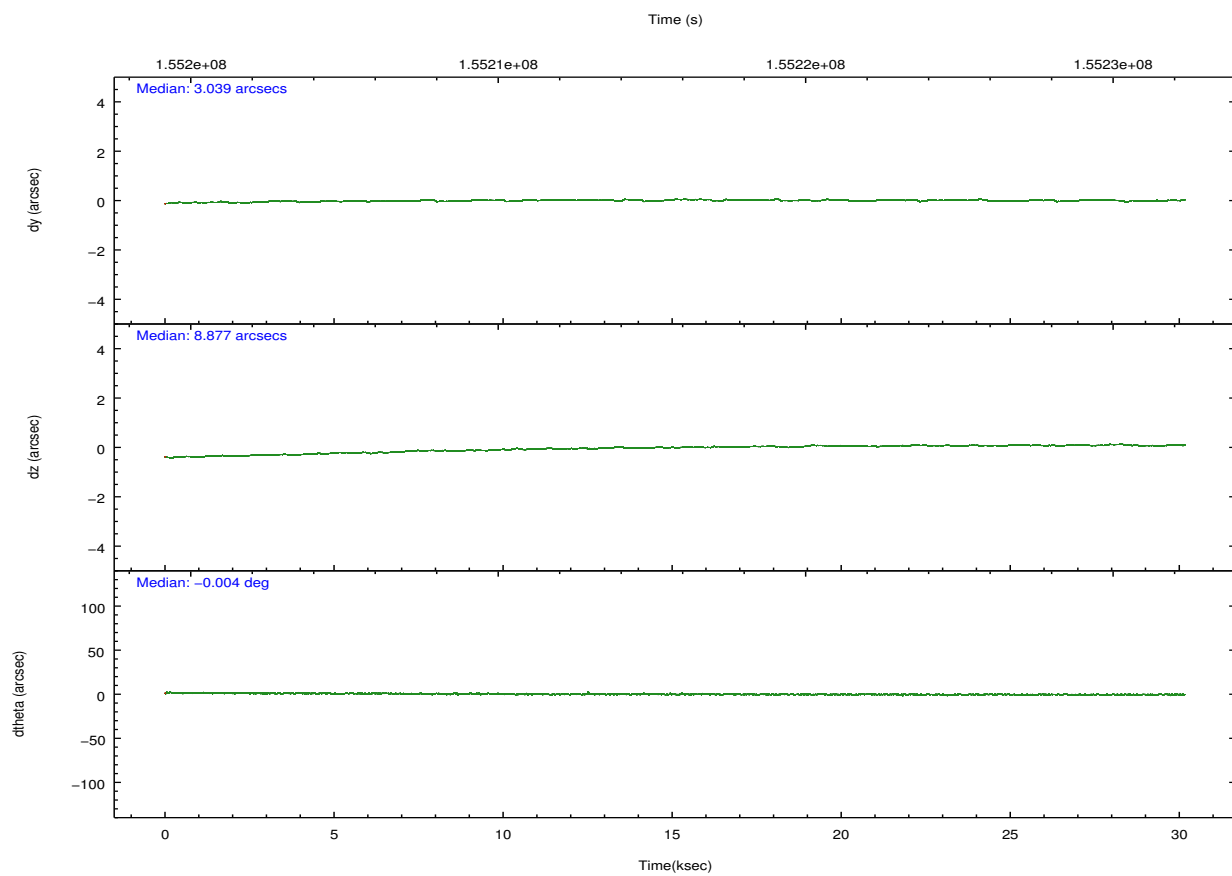
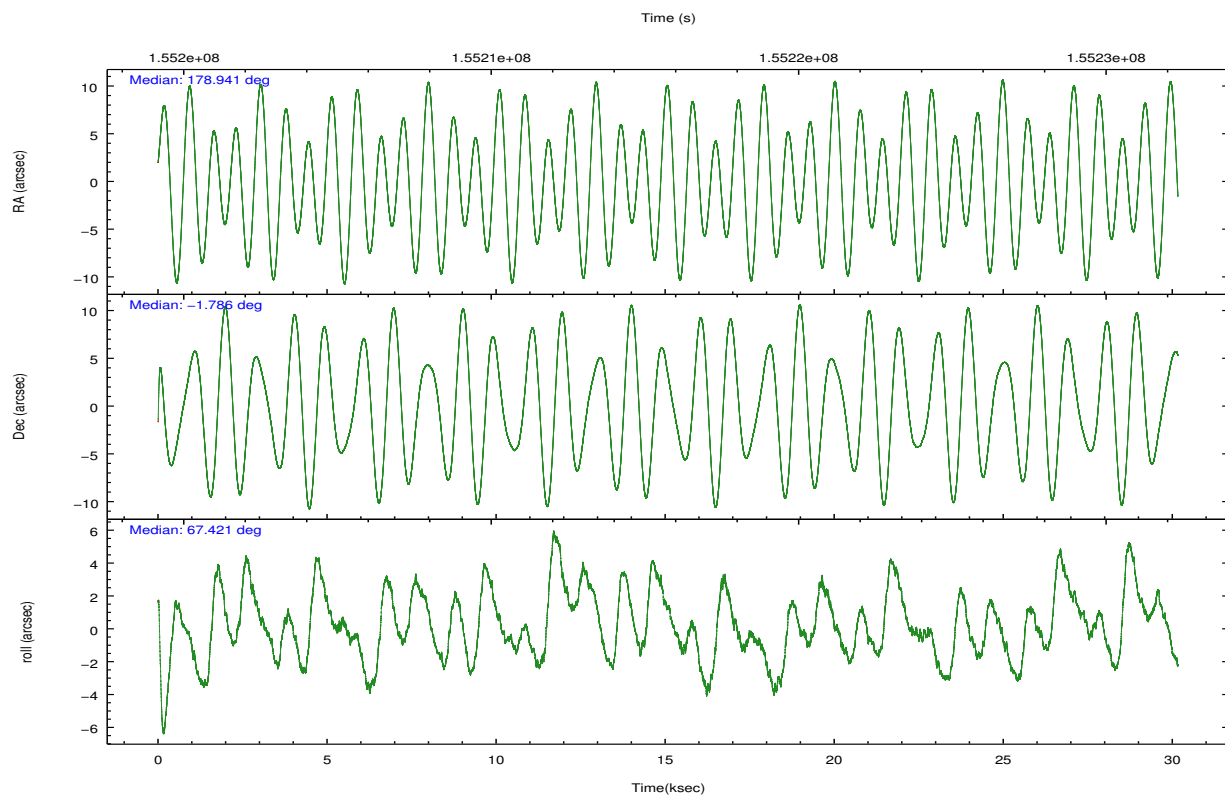
	ccd 2	ccd 3	ccd 5	ccd 6	ccd 7
grade 0 events	5171	5093	18857	5980	7494
	3%	3%	8%	3%	4%
grade 1 events	69	68	208	69	154
	0%	0%	0%	0%	0%
grade 2 events	3386	3120	30492	3429	15946
	2%	1%	13%	2%	9%
grade 3 events	1725	1776	4574	1907	7682
	1%	1%	2%	1%	4%
grade 4 events	1762	1708	4534	1934	7607
	1%	1%	2%	1%	4%
grade 5 events	5060	6035	16782	6042	18410
	3%	3%	7%	3%	10%
grade 6 events	2765	2844	54097	3451	41230
	1%	1%	24%	2%	23%
grade 7 events	141832	138120	90949	138576	76673
	87%	86%	41%	85%	43%

2.2 Compared Parameters

Parameter	Planned	Actual	Parameter	Planned	Actual
Instrument	ACIS	ACIS	Obspar format version number	7	7
Detector	ACIS-23567	ACIS-23567	Obspar file type	PREDICTED	ACTUAL
Grating	NONE	NONE	Obspar update status	NONE	UPDATED
Data mode	VFAINT	VFAINT	Number of optional ACIS chips dropped	0	0
Observation mode	POINTING	POINTING	On-chip summing requested	N	N
[deg] Pointing RA	178.944947	178.9410665684266	Subarray requested	NONE	NONE
[deg] Pointing Dec	-1.813200	-1.786264831774095	Alternating exposures requested	N	N
[deg] Pointing Roll	67.265769	67.42227710697853	[s] Primary exposure time	0.000000	3.1
[mm] SIM focus pos	-0.684267	-0.6828225247311905			
[mm] SIM defocus	0	0.001444936568705701			
[mm] SIM translation stage pos	-190.132523	-190.1400660498719			
[mm] SIM translation stage offset	0	0.00754346686406393			
[s] Observation start time (MET)	155200839.184000	155199867.68515			
Observation start date	2002-12-02T07:19:35	2002-12-02T07:04:27			
[s] Observation end time (MET)	155230839.184000	155231391.56147			
Observation end date	2002-12-02T15:39:35	2002-12-02T15:49:51			
Read mode	TIMED	TIMED			

2.3 Aspect



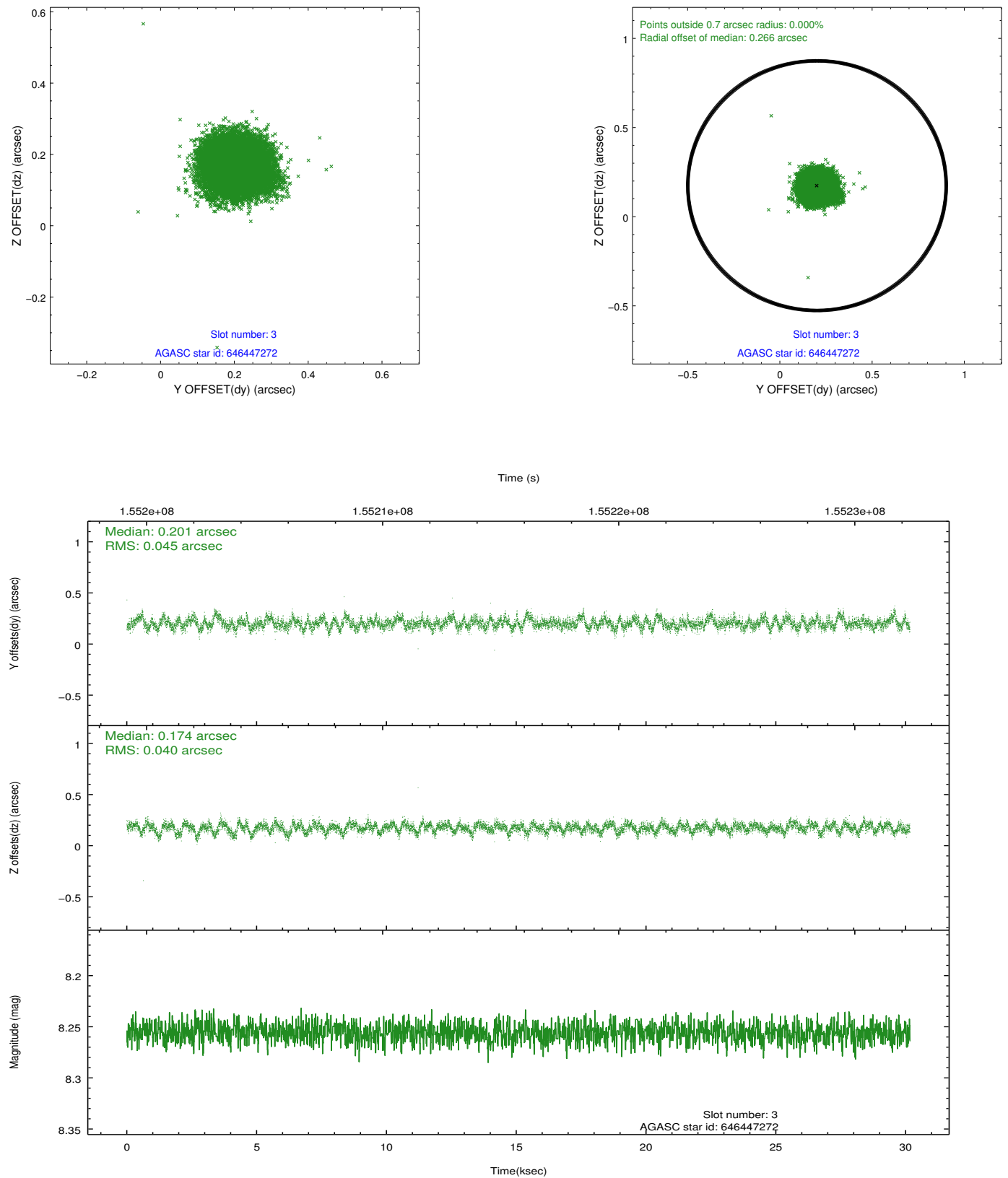


Slot Statistics

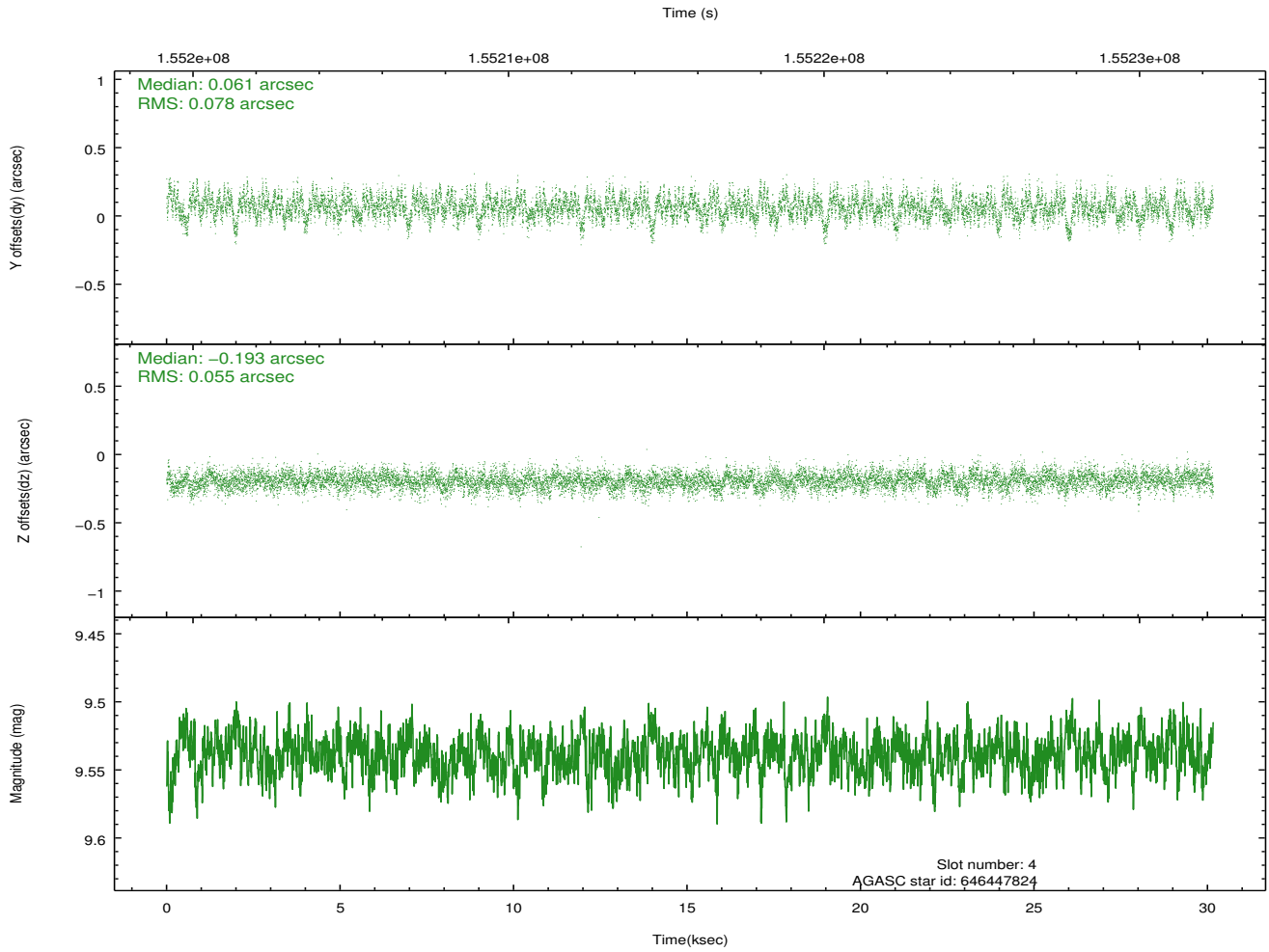
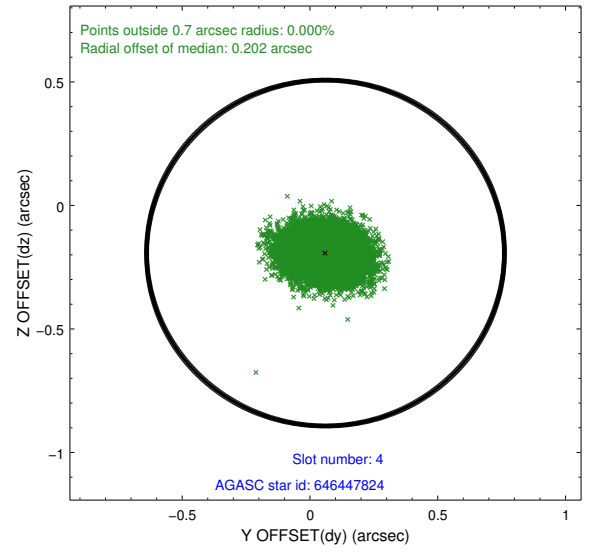
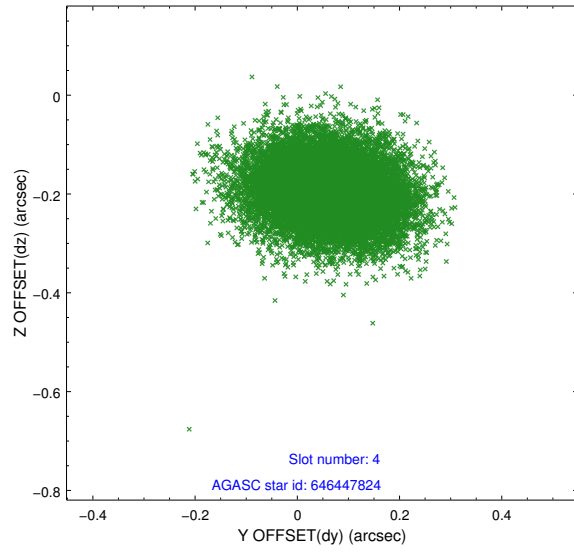
slot	status	id	mag	n_pts	med_dy	med_dz	dr1	dr2	ra	dec	mean_y	mean_z
0	FID	ACIS-S-2	7.11	7357	-0.023	-0.012	0.008	0.012	0.000000	0.000000	-755.70	-1730.04
1	FID	ACIS-S-4	7.20	7356	0.008	0.014	0.006	0.011	0.000000	0.000000	2157.58	178.39
2	FID	ACIS-S-5	7.24	7357	-0.017	0.006	0.007	0.012	0.000000	0.000000	-1808.44	172.14
3	GUIDE	646447272	8.26	14712	0.201	0.174	0.064	0.104	178.727936	-2.375175	-2166.95	-62.40
4	GUIDE	646447824	9.54	14700	0.061	-0.193	0.101	0.166	178.405504	-2.010198	-1404.36	1515.03
5	GUIDE	646448760	8.42	14709	-0.239	-0.070	0.066	0.108	178.661013	-1.698317	-13.31	1101.70
6	GUIDE	646451504	8.68	14711	-0.134	-0.036	0.072	0.113	179.005238	-1.442212	1315.96	315.51
7	GUIDE	646846120	9.89	14697	0.108	0.128	0.150	0.235	179.216286	-2.576707	-2157.31	-1962.79

2.4 Star Slots

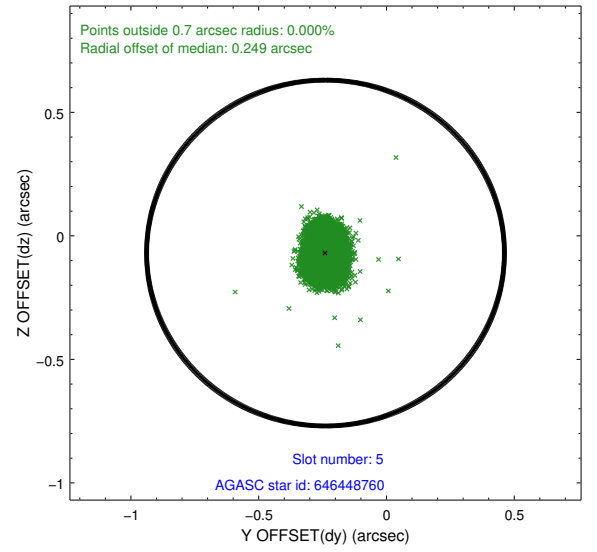
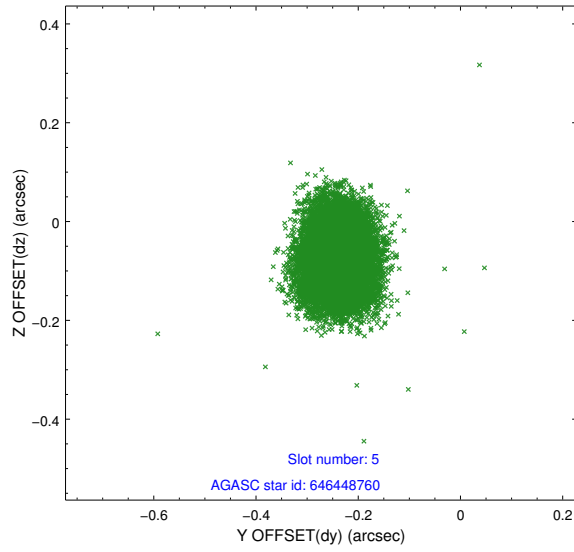
2.4.1 Slot 3



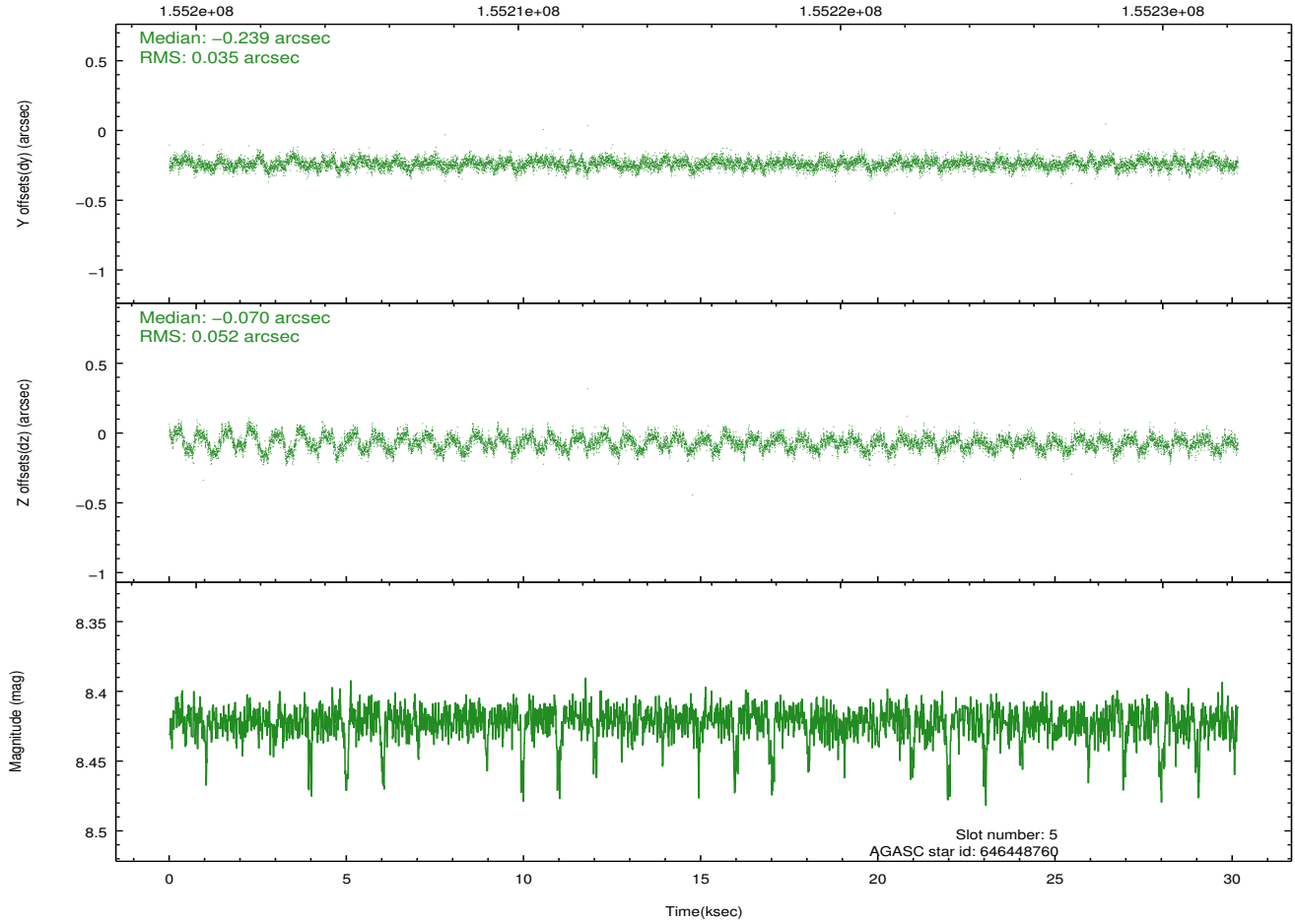
2.4.2 Slot 4



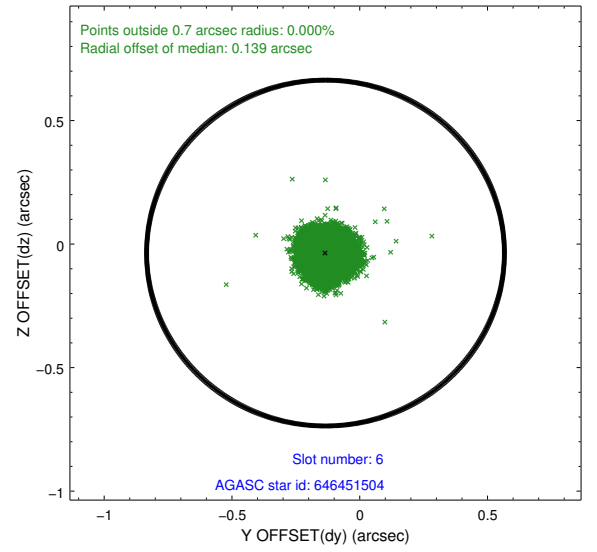
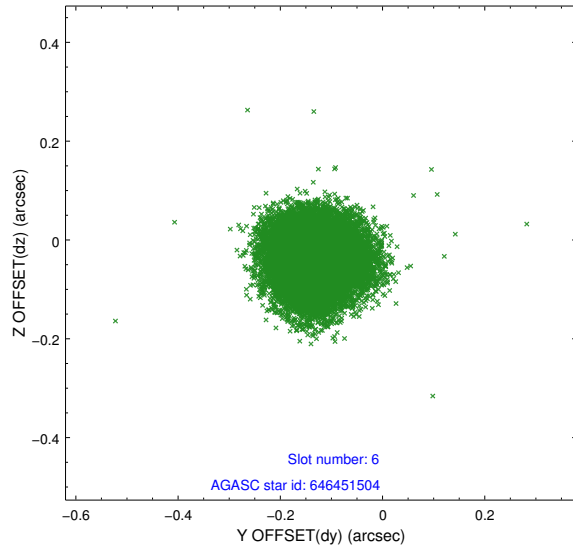
2.4.3 Slot 5



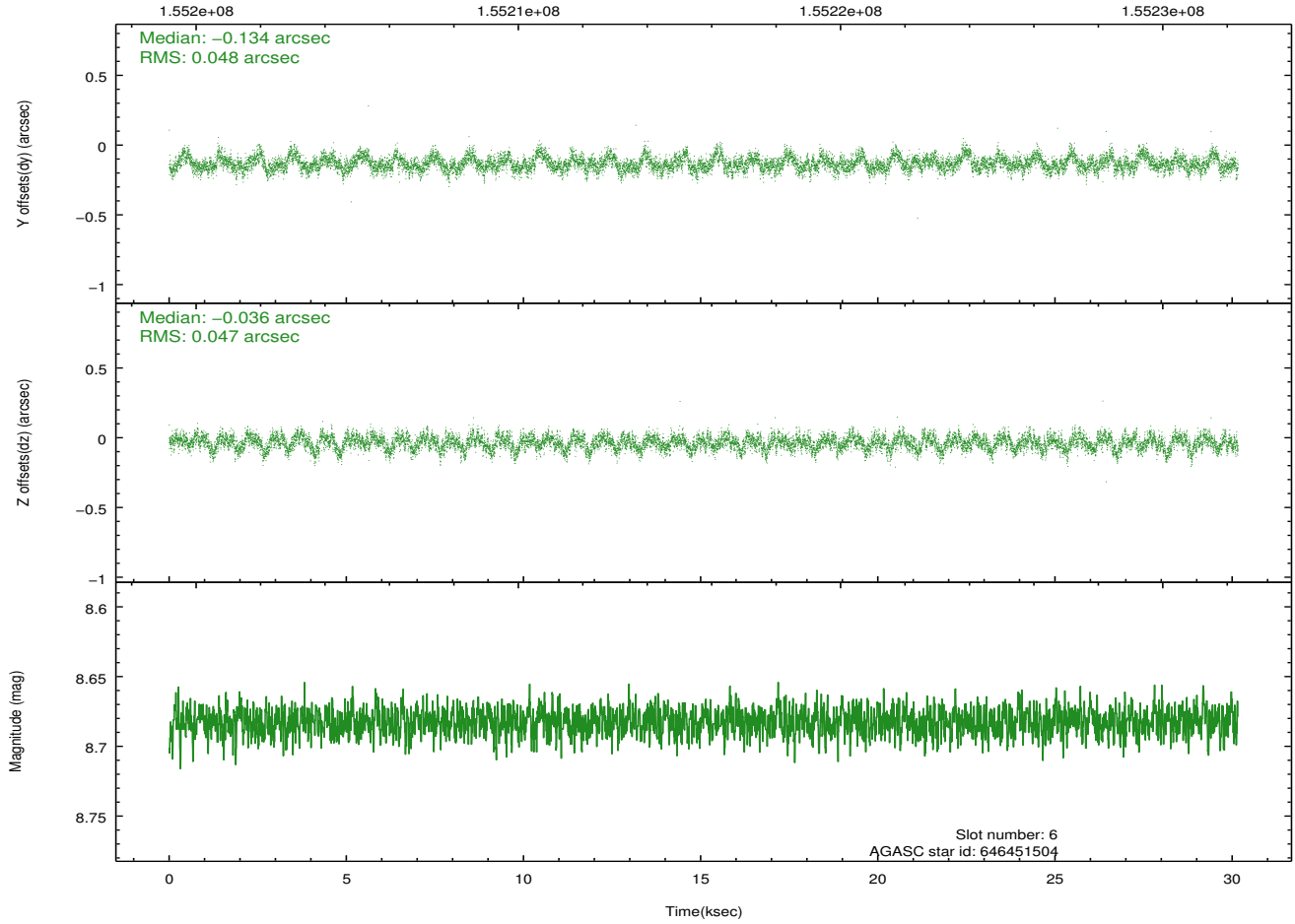
Time (s)



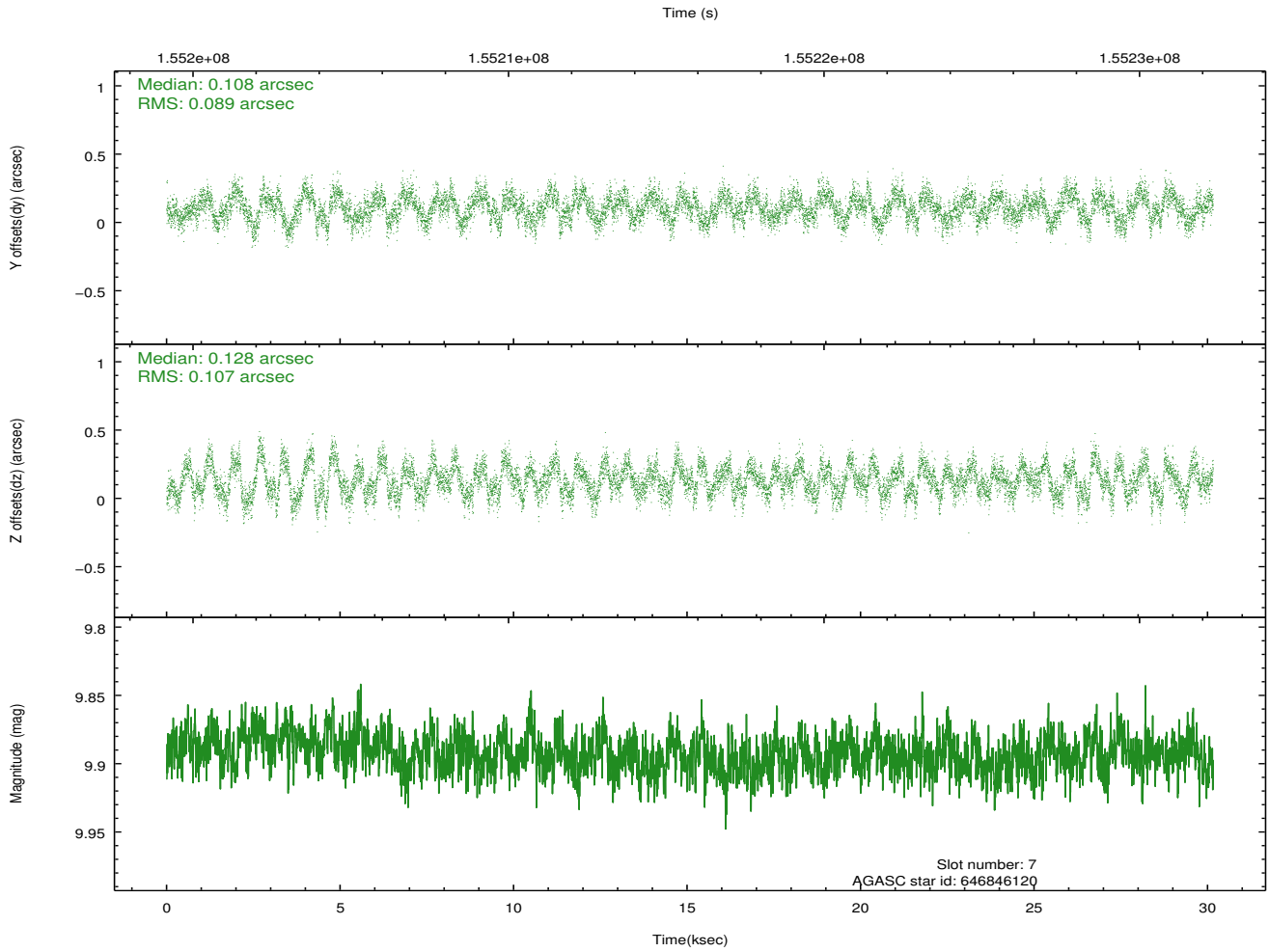
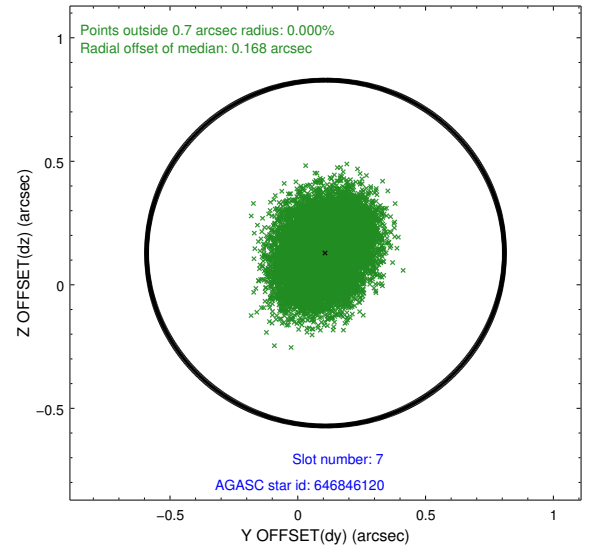
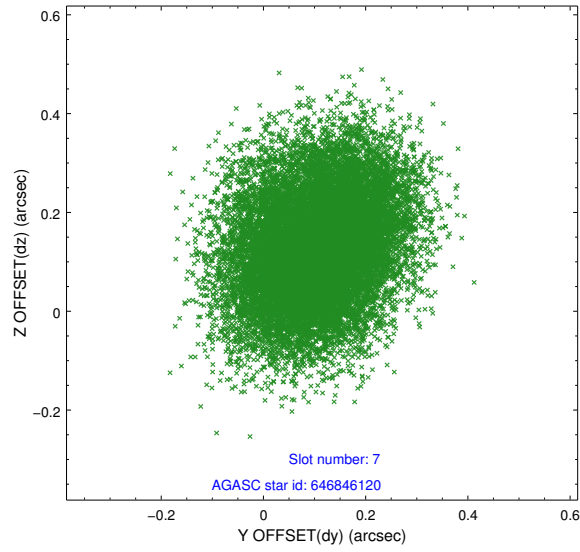
2.4.4 Slot 6



Time (s)

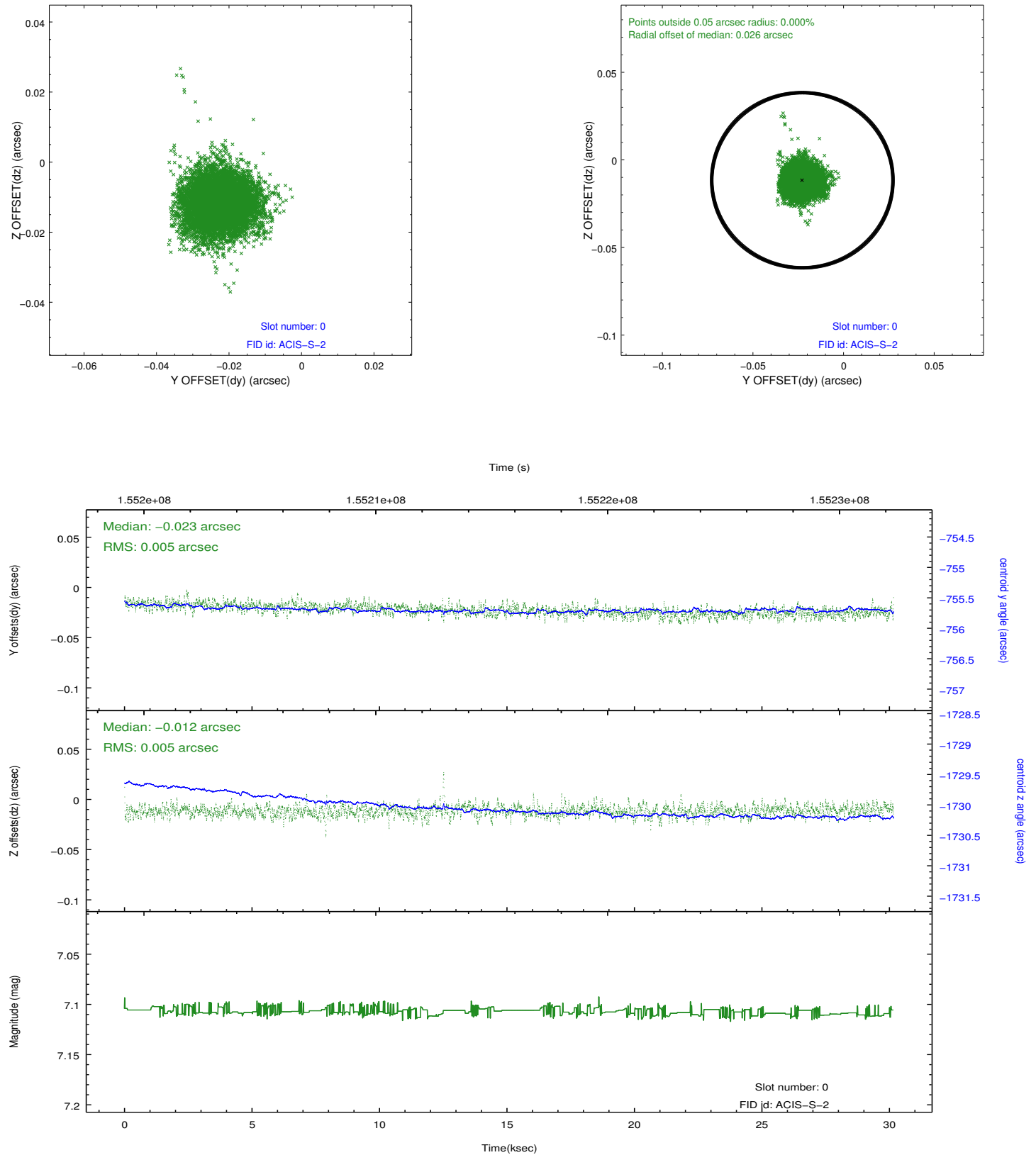


2.4.5 Slot 7

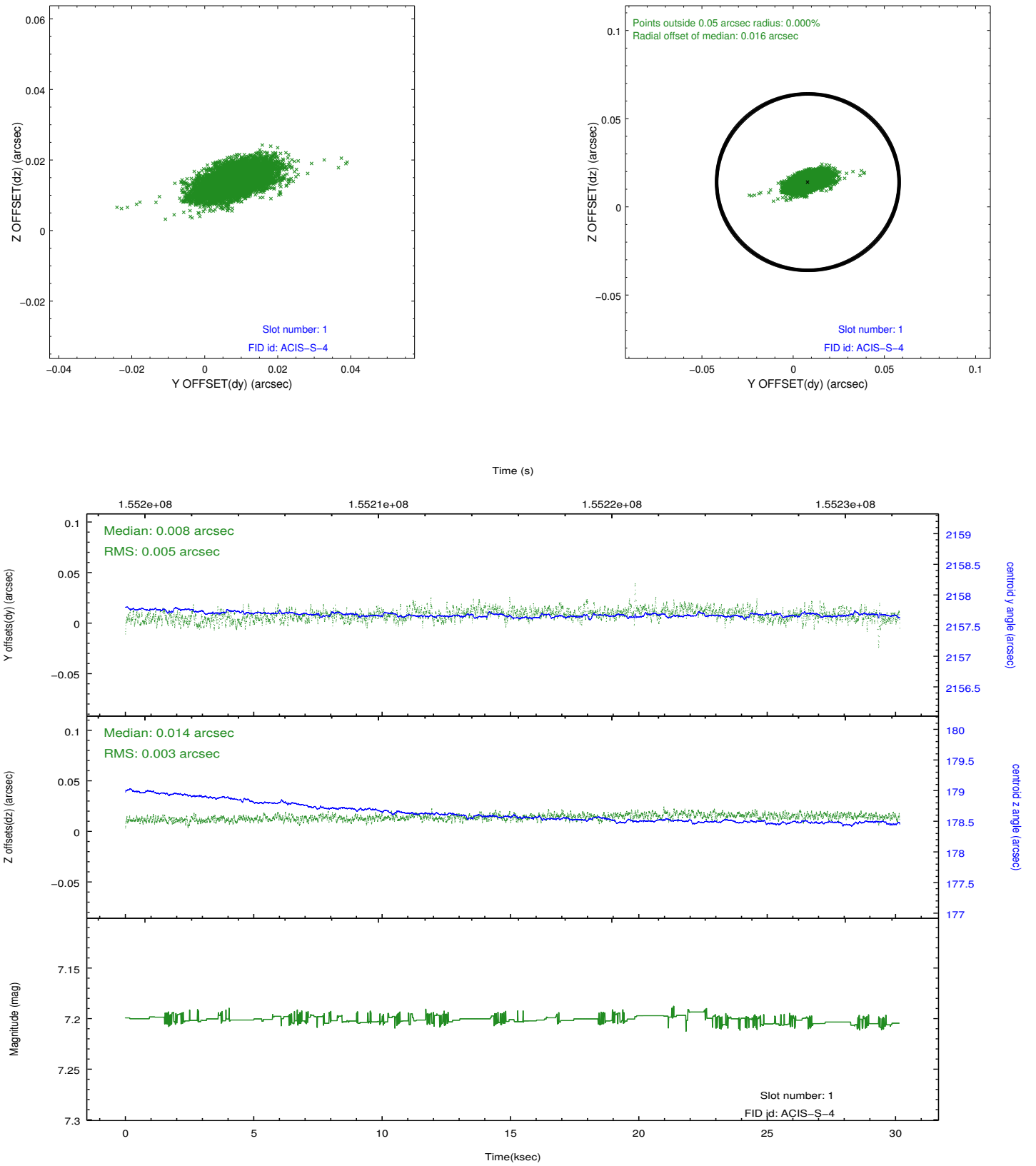


2.5 FID Slots

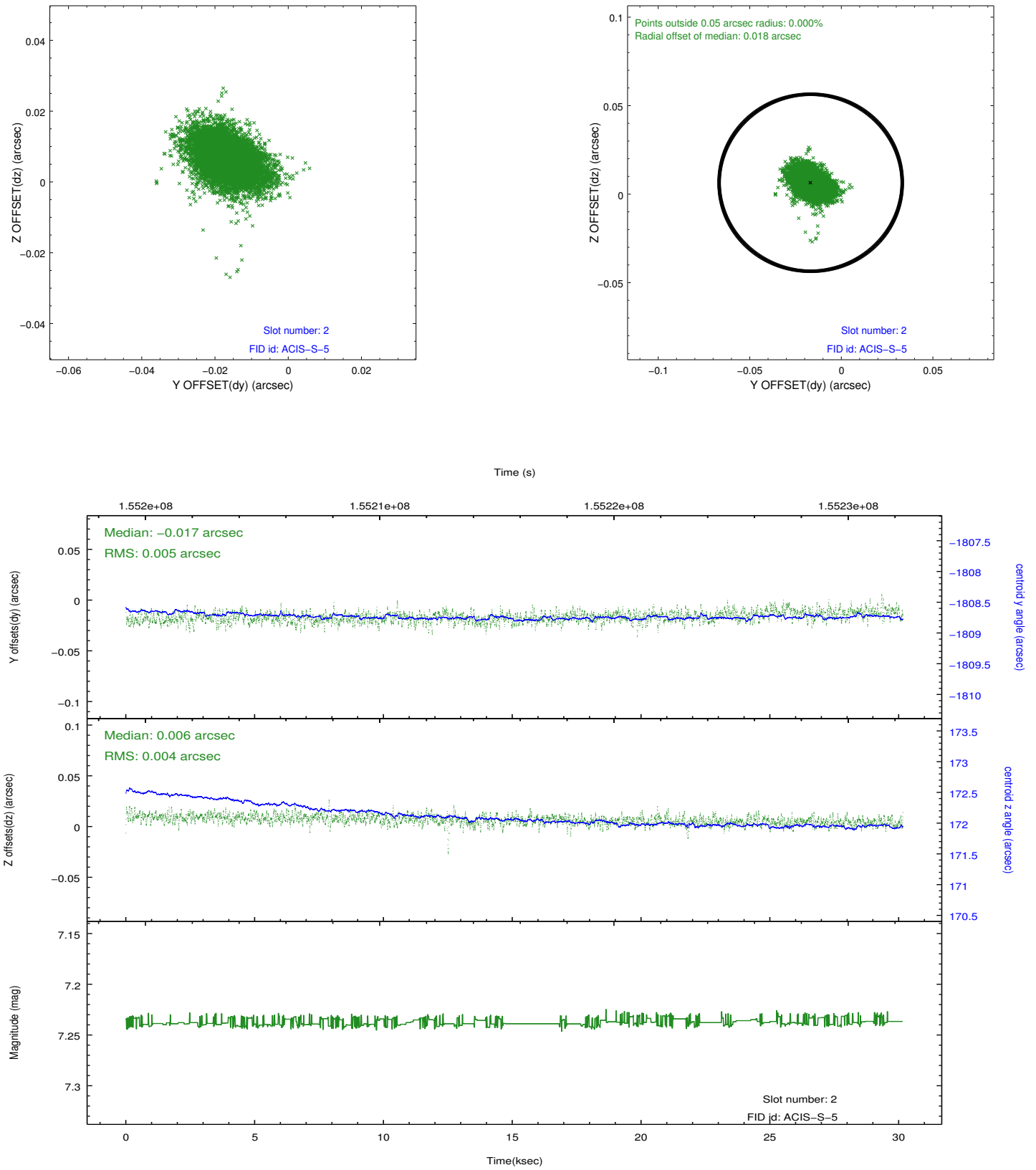
2.5.1 Slot 0



2.5.2 Slot 1



2.5.3 Slot 2



A Summary

A.1 Status

V&V Scientist	Jen Lauer
V&V Date (YYYY-MM-DD)	2012.10.28
V&V Edition	1
V&V Disposition and Status	OK
V&V Charge Time	30.128

A.2 Comments