

V&V Reference Report

L2 ASCDS Version : 7.6.9

Observation 3080 - L2 Version 001
Chandra X-Ray Center

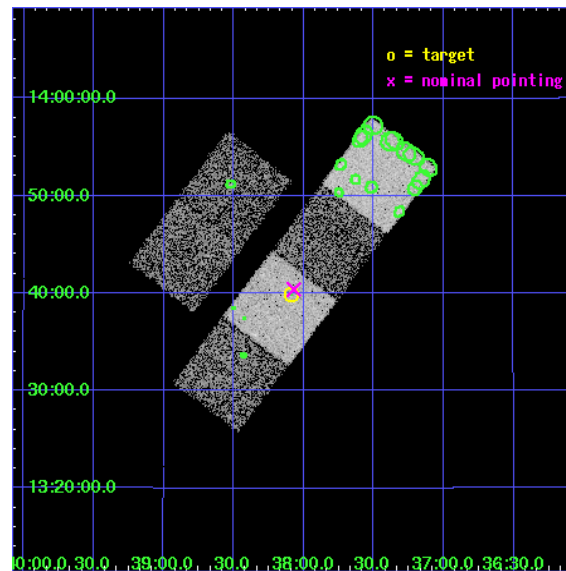
L2 Processing Date : Sep 21 2006

Contents

1	Front	2
2	OBI	3
2.1	OBI	3
2.1.1	Images	3
2.1.2	Bias	3
2.1.3	Parameters	4
2.1.4	Events	4
2.2	Compared Parameters	5
2.3	Aspect	6
2.4	Star Slots	9
2.4.1	Slot 3	9
2.4.2	Slot 4	10
2.4.3	Slot 5	11
2.4.4	Slot 6	12
2.4.5	Slot 7	13
2.5	FID Slots	14
2.5.1	Slot 0	14
2.5.2	Slot 1	15
2.5.3	Slot 2	16
3	Point Sources	17
A	Summary	18
A.1	Status	18
A.2	Comments	18

1 Front

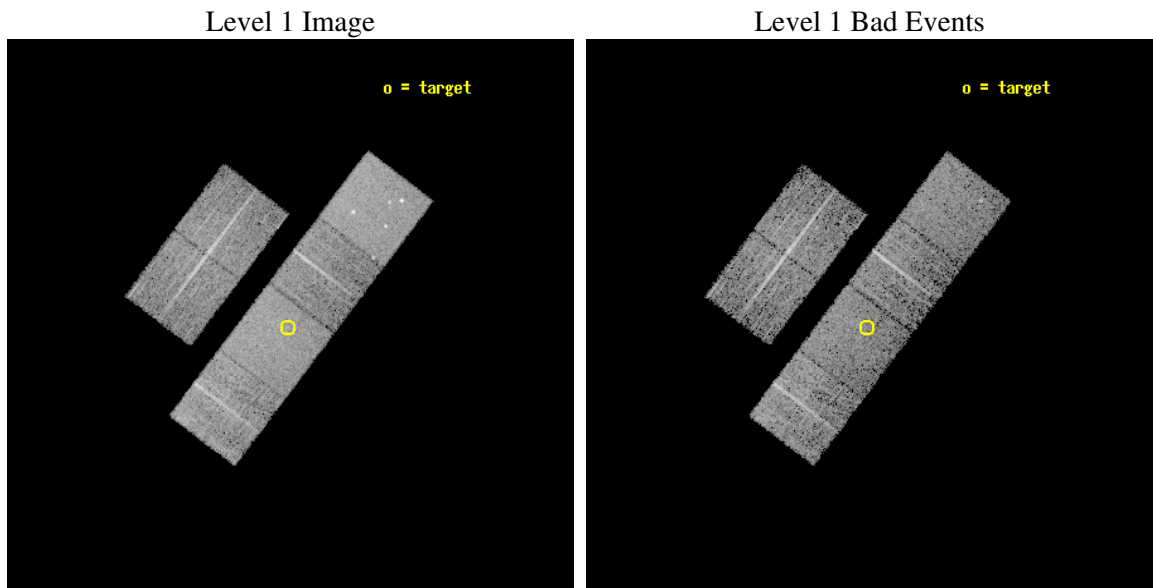
seq_num	700519
obs_id	3080
title	X-RAY WEAK BROAD-LINE QUASARS: ABSORPTION OR INTRINSIC X_RAY WEAKNESS ?
observer	Dr Guido Risaliti
object	HS 2135+1326
dtcycle	0
cycle	P
ra_targ	324.522083
dec_targ	13.664861
ra_nom	324.51752536905
dec_nom	13.673442649424
roll_nom	127.19210029175
revision	2
ontime	5983.9999777079
livetime	5908.2269668579
ontime2	5983.9999777079
ontime3	5983.9999777079
ontime5	5983.9999777079
ontime6	5983.9999777079
ontime7	5983.9999777079
ontime8	5983.9999777079
l2events	59101



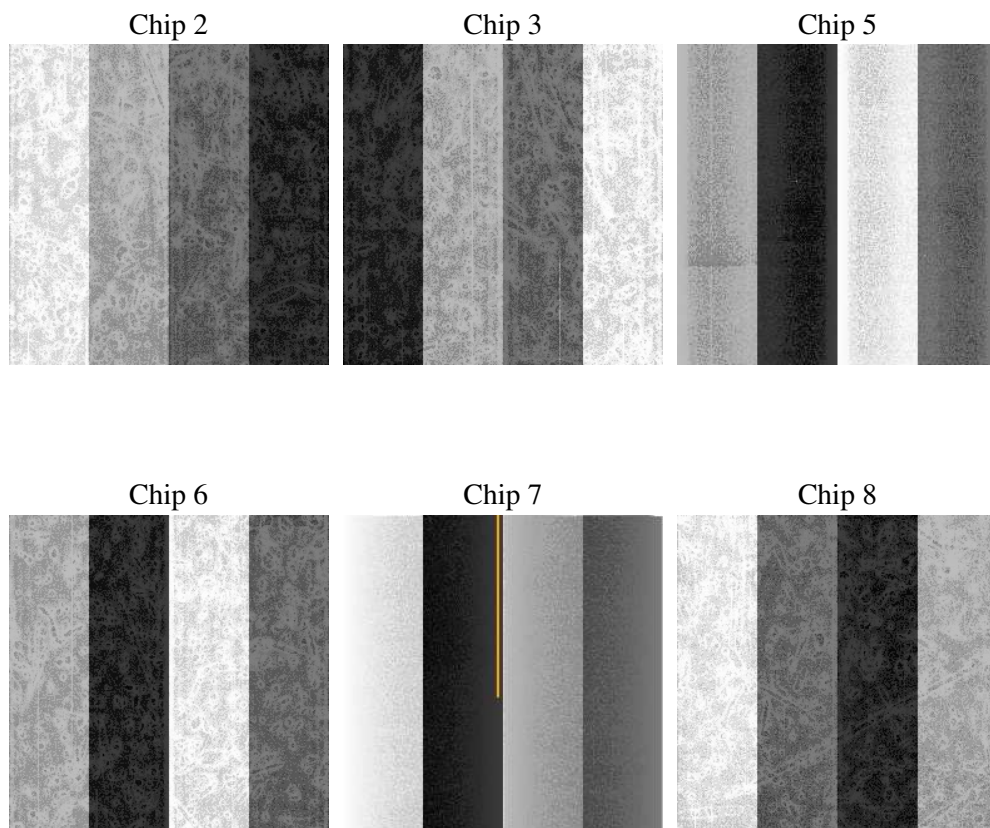
2 OBI

2.1 OBI

2.1.1 Images



2.1.2 Bias



2.1.3 Parameters

obi_num	0
ascdsver	7.6.9
caldsver	3.2.3
date	2006-09-21T03:31:03
revision	2

sched_exp_time	6000.000000
ontime	5989.3690455854
ontime2	5989.3690455854
ontime3	5989.3690156639
ontime5	5989.3690455854
ontime6	5989.3690156639
ontime7	5989.3690455854
ontime8	5989.3690455854
l1events	277147

2.1.4 Events

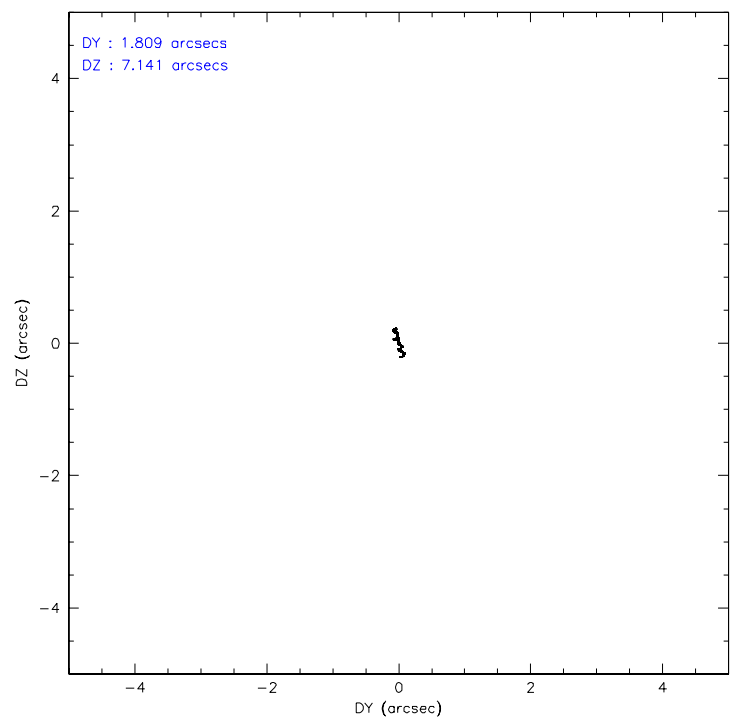
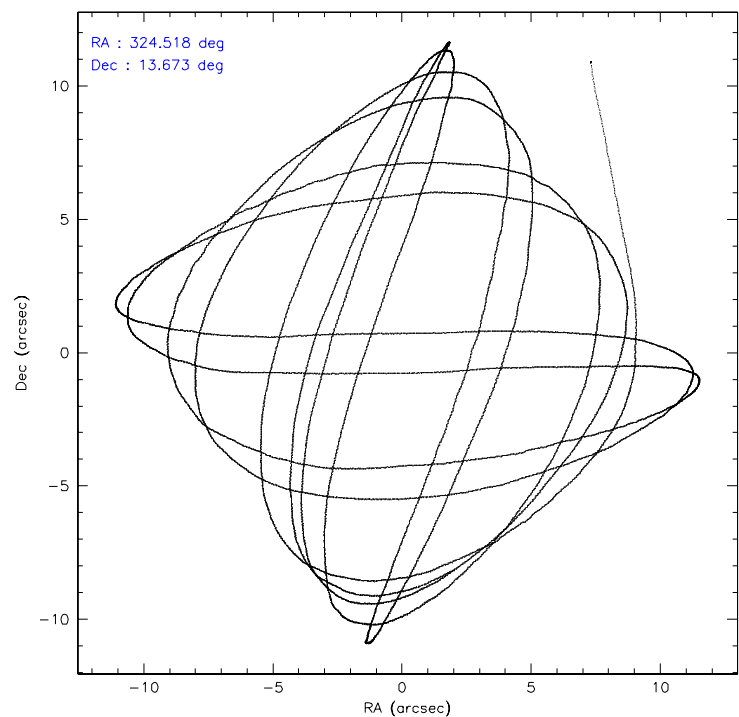
	ccd 2	ccd 3	ccd 5	ccd 6	ccd 7	ccd 8
level 1 events	39879	38698	58235	38151	52000	50184
rejected events	35468	34204	32220	33642	32023	40314
rejected %	88%	88%	55%	88%	61%	80%

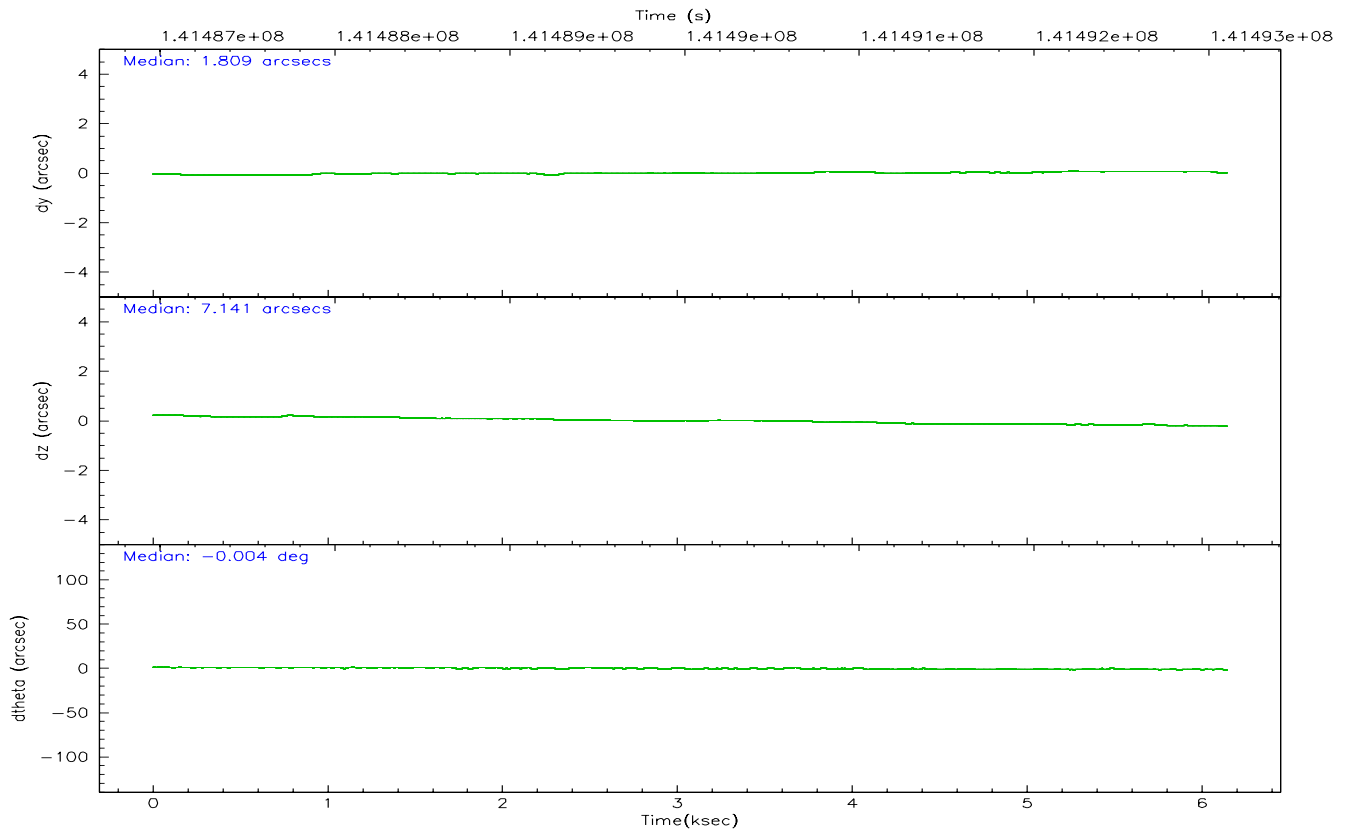
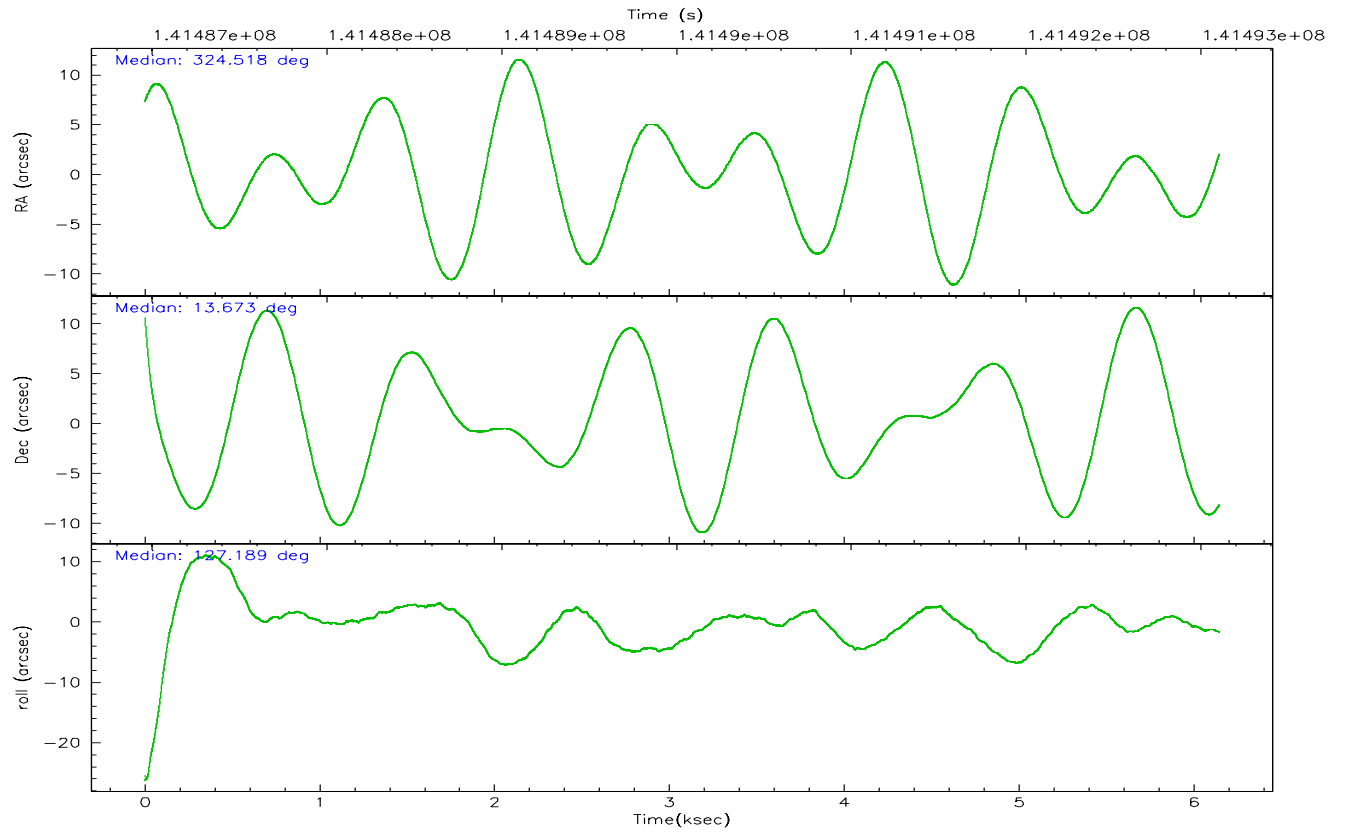
	ccd 2	ccd 3	ccd 5	ccd 6	ccd 7	ccd 8
grade 0 events	1868	1934	2492	1794	1287	3016
	4%	4%	4%	4%	2%	6%
grade 1 events	17	19	55	25	34	25
	0%	0%	0%	0%	0%	0%
grade 2 events	973	935	7944	978	4836	2302
	2%	2%	13%	2%	9%	4%
grade 3 events	390	403	620	452	1068	956
	0%	1%	1%	1%	2%	1%
grade 4 events	413	450	560	427	974	866
	1%	1%	0%	1%	1%	1%
grade 5 events	1411	1622	2892	1754	3552	2165
	3%	4%	4%	4%	6%	4%
grade 6 events	778	774	14435	869	11832	2744
	1%	2%	24%	2%	22%	5%
grade 7 events	34029	32561	29237	31852	28417	38110
	85%	84%	50%	83%	54%	75%

2.2 Compared Parameters

Parameter	Planned	Actual	Parameter	Planned	Actual
Instrument	ACIS	ACIS	Obspar format version number	6	6
Detector	ACIS-235678	ACIS-235678	Obspar file type	PREDICTED	ACTUAL
Grating	NONE	NONE	Obspar update status	NONE	UPDATED
Data mode	FAINT	FAINT	Number of optional ACIS chips dropped	0	0
Observation mode	POINTING	POINTING	On-chip summing requested	N	N
Pointing RA	324.543523	324.5175253690543	Subarray requested	NONE	NONE
Pointing Dec	13.663259	13.67344264942419	Alternating exposures requested	N	N
Pointing Roll	127.029343	127.1921002917505	Primary exposure time	0.000000	3.2
SIM focus pos (mm)	-0.684267	-0.6828225247311905			
SIM defocus (mm)	0	0.001444936568705701			
SIM translation stage pos (mm)	-190.132523	-190.1425803651734			
SIM translation stage offset (mm)	0	0.01005778216563158			
Observation start time	141487106.184000	141486132.28078			
Observation start date	2002-06-26T13:57:22	2002-06-26T13:42:12			
Observation end time	141493106.184000	141493870.5186			
Observation end date	2002-06-26T15:37:22	2002-06-26T15:51:10			
Read mode	TIMED	TIMED			

2.3 Aspect



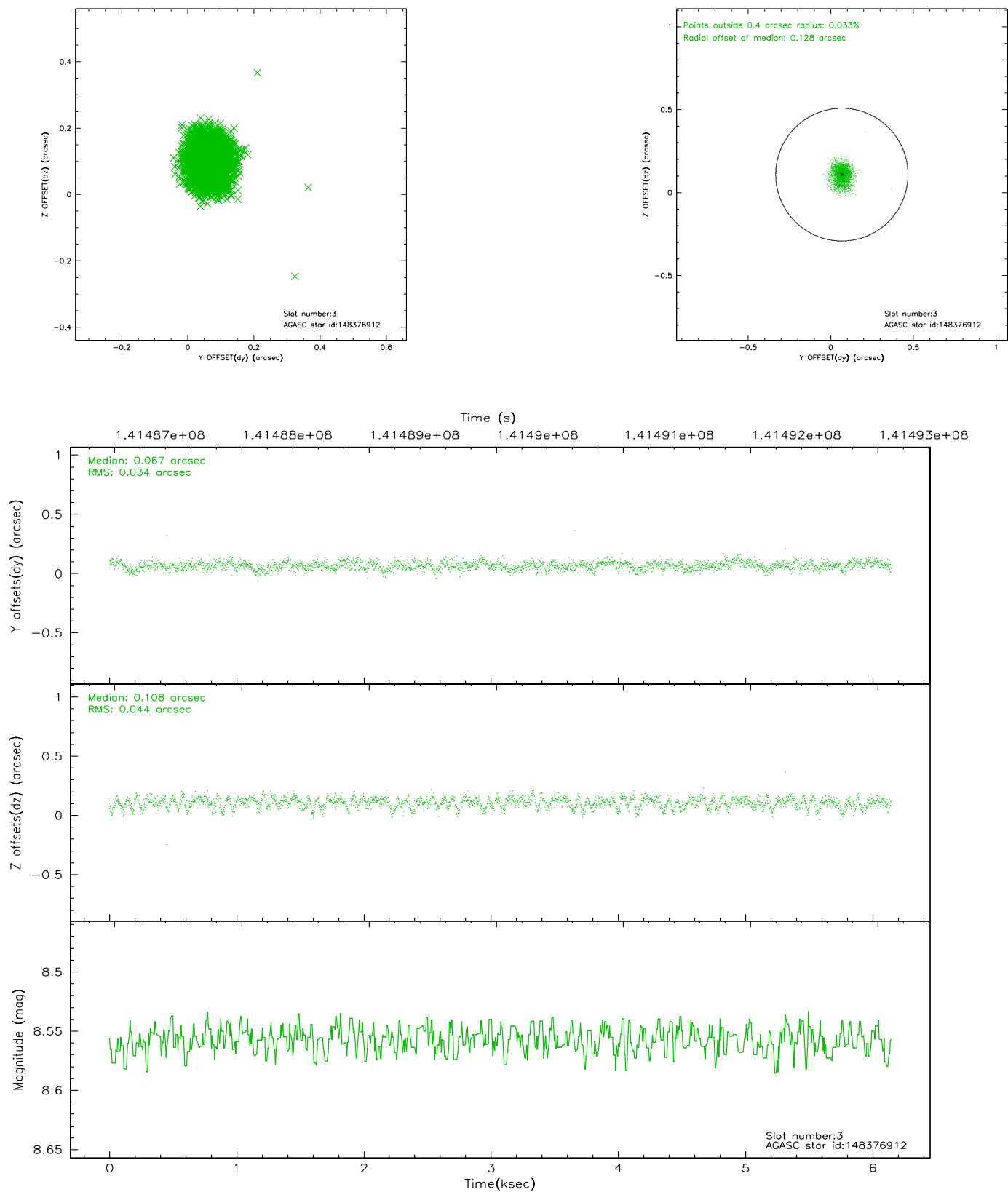


Slot Statistics

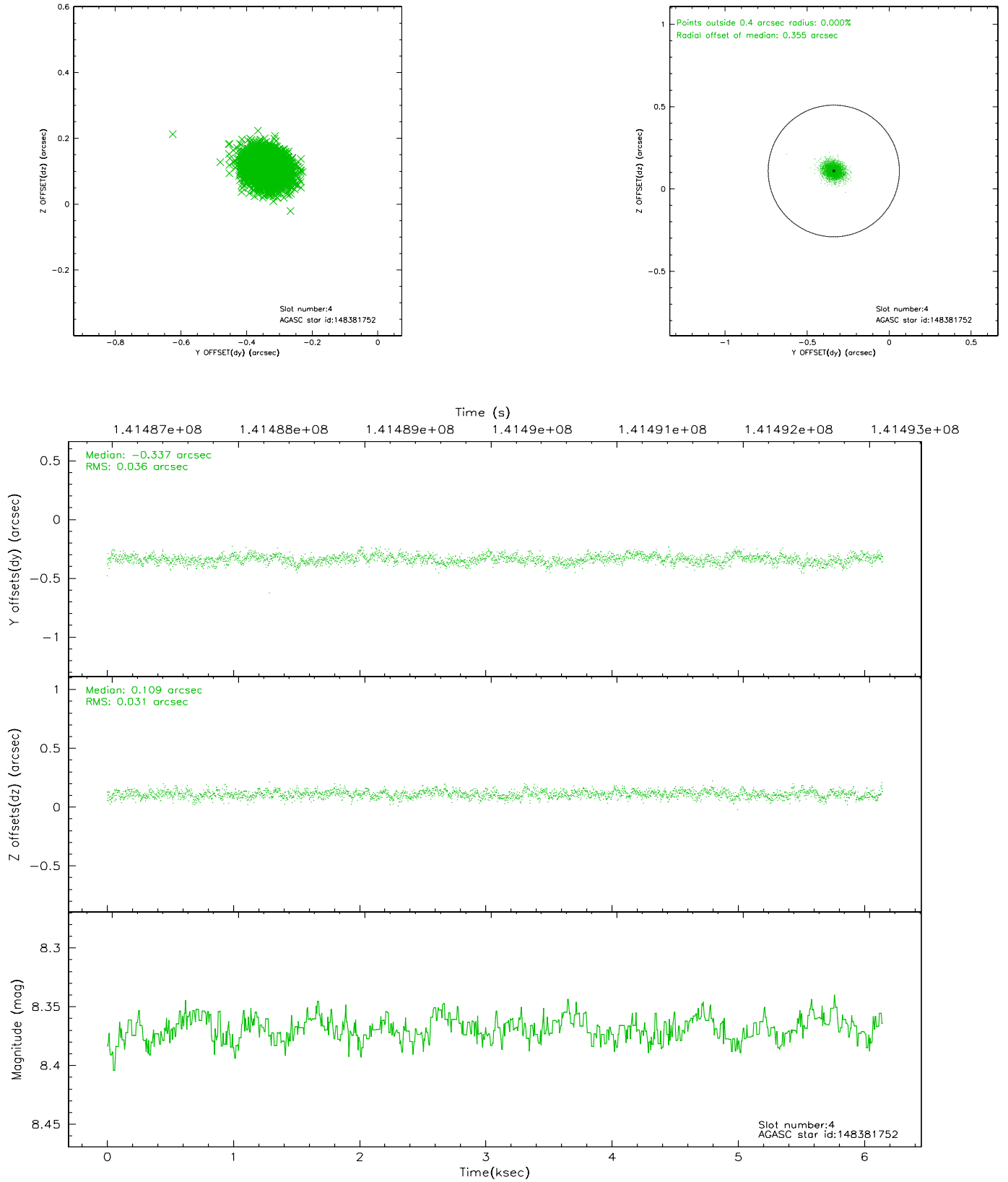
slot	status	id	mag	n_pts	med_dy	med_dz	dr1	dr2	ra	dec	mean_y	mean_z
0	FID	ACIS-S-2	7.11	1499	-0.022	0.022	0.008	0.012	0.000000	0.000000	-754.44	-1728.24
1	FID	ACIS-S-4	7.20	1499	-0.061	0.004	0.006	0.010	0.000000	0.000000	2158.36	179.23
2	FID	ACIS-S-5	7.24	1499	0.051	-0.018	0.006	0.011	0.000000	0.000000	-1805.97	173.97
3	GUIDE	148376912	8.56	2999	0.067	0.108	0.058	0.097	324.981079	13.768254	-617.31	-1449.23
4	GUIDE	148381752	8.37	2999	-0.337	0.109	0.049	0.080	324.407078	14.222766	1895.40	-832.60
5	GUIDE	148386592	10.01	2997	0.241	-0.180	0.118	0.196	324.670007	13.126765	-1807.00	809.16
6	GUIDE	148379296	8.32	2998	-0.050	0.035	0.048	0.078	324.497529	13.999683	1064.02	-600.04
7	GUIDE	148383040	9.60	2995	0.079	-0.071	0.097	0.157	324.268768	13.435463	-73.48	1261.93

2.4 Star Slots

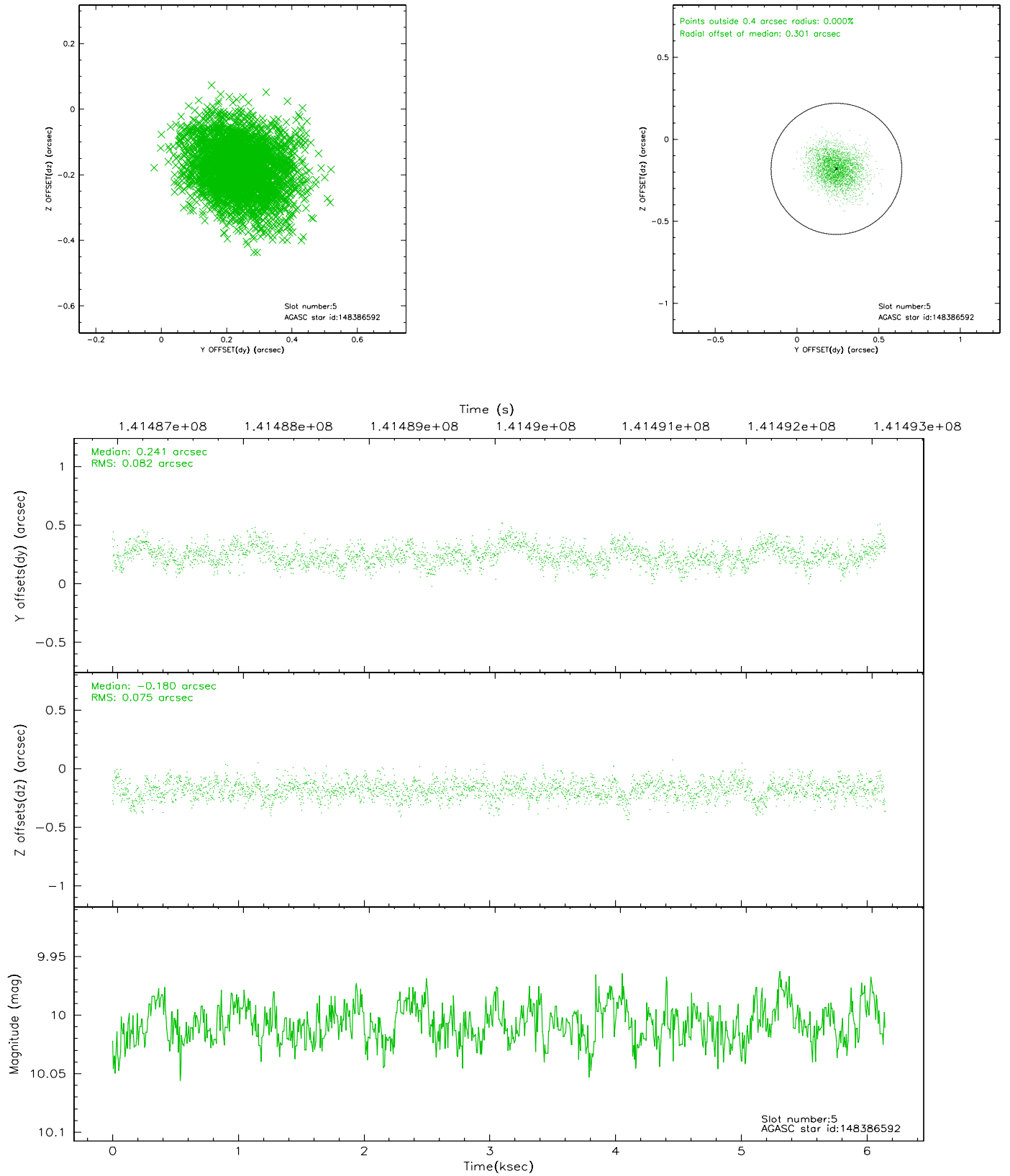
2.4.1 Slot 3



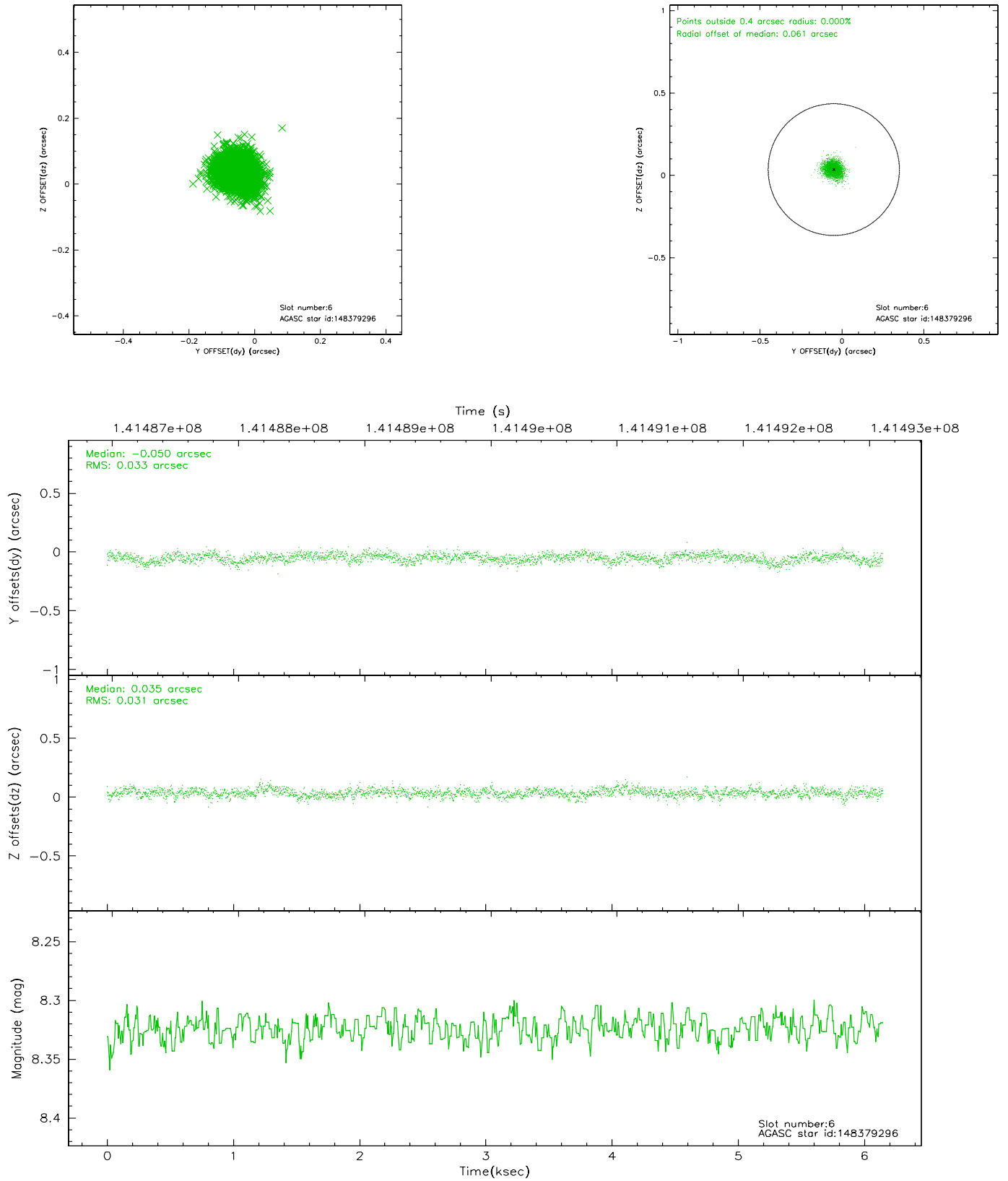
2.4.2 Slot 4



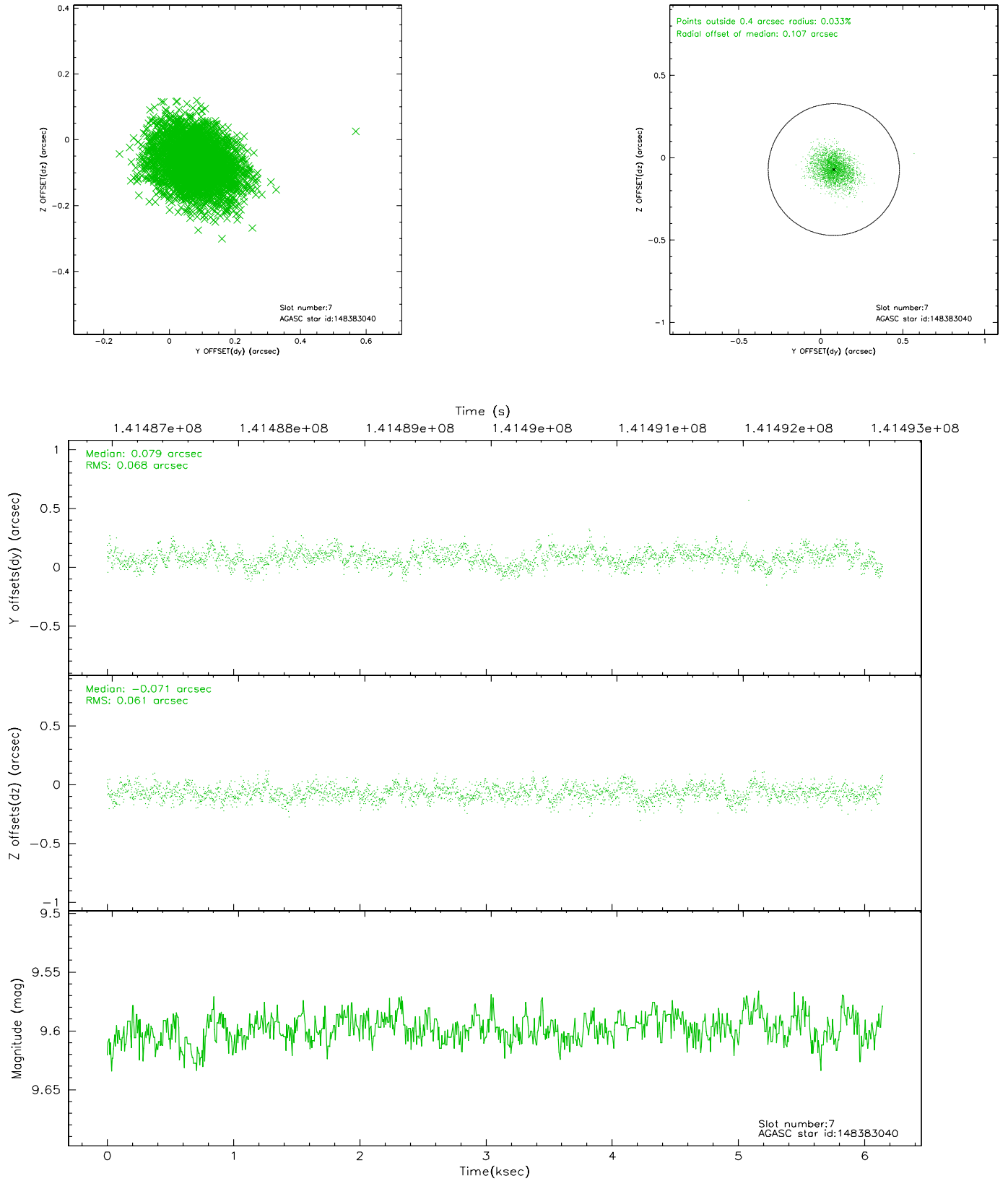
2.4.3 Slot 5



2.4.4 Slot 6

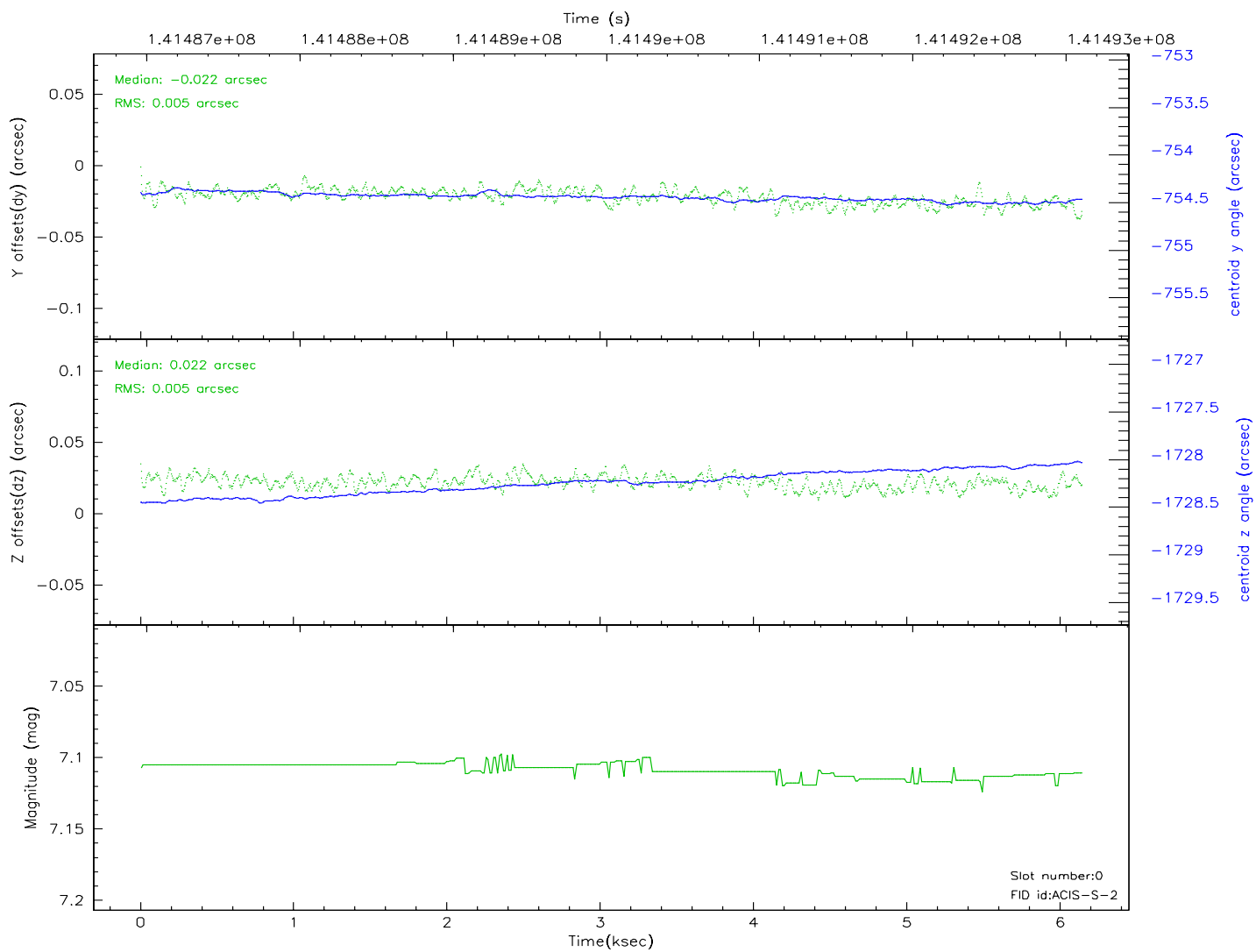
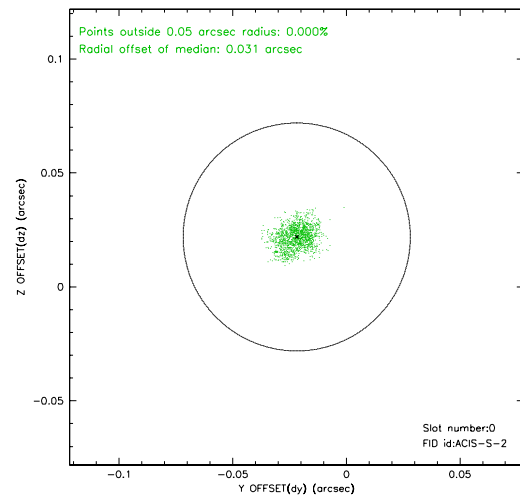
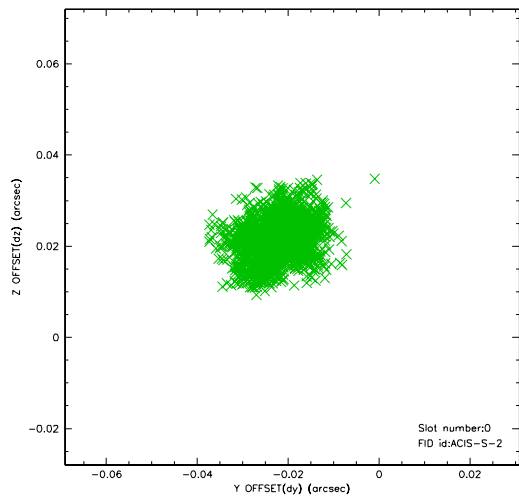


2.4.5 Slot 7

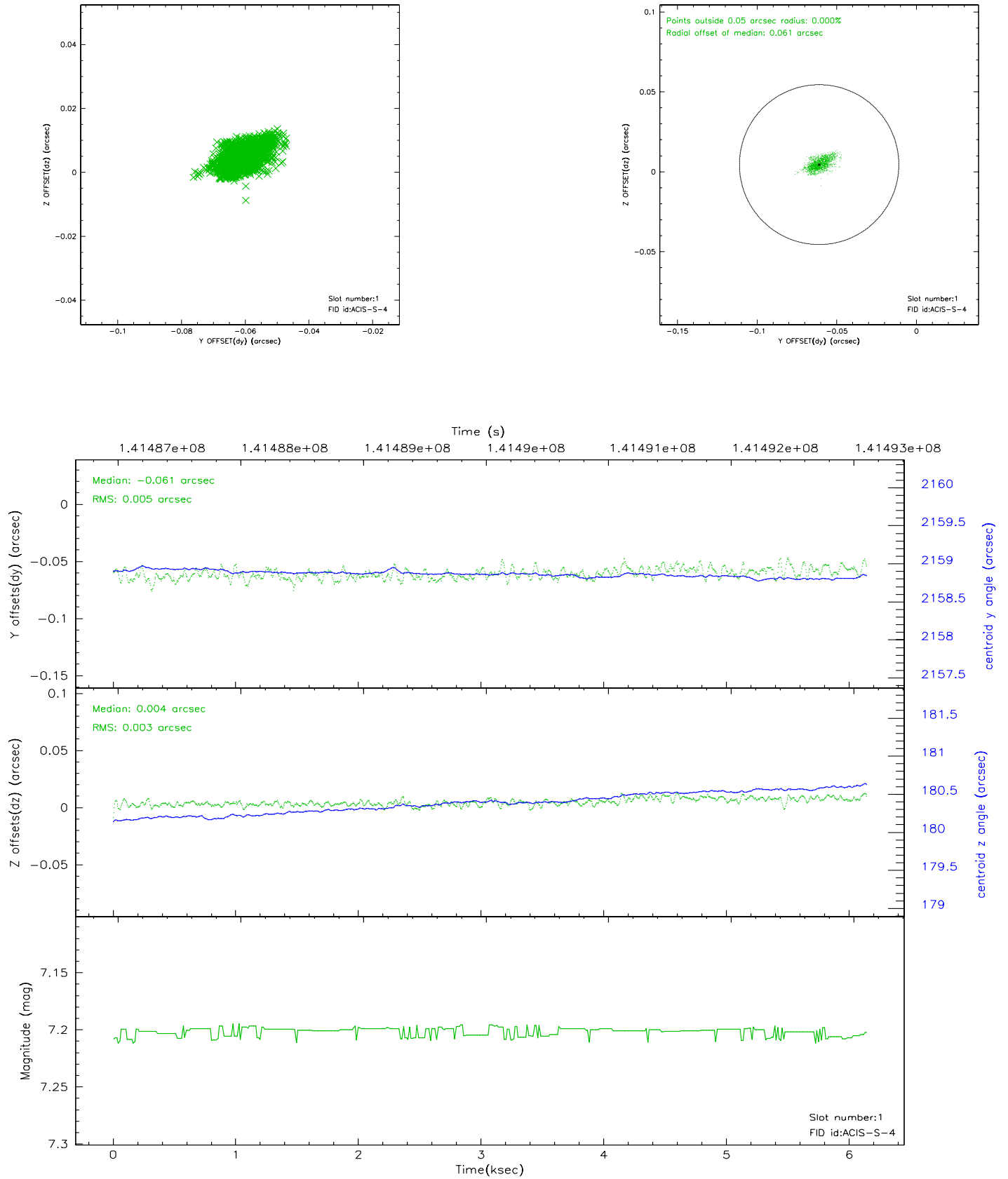


2.5 FID Slots

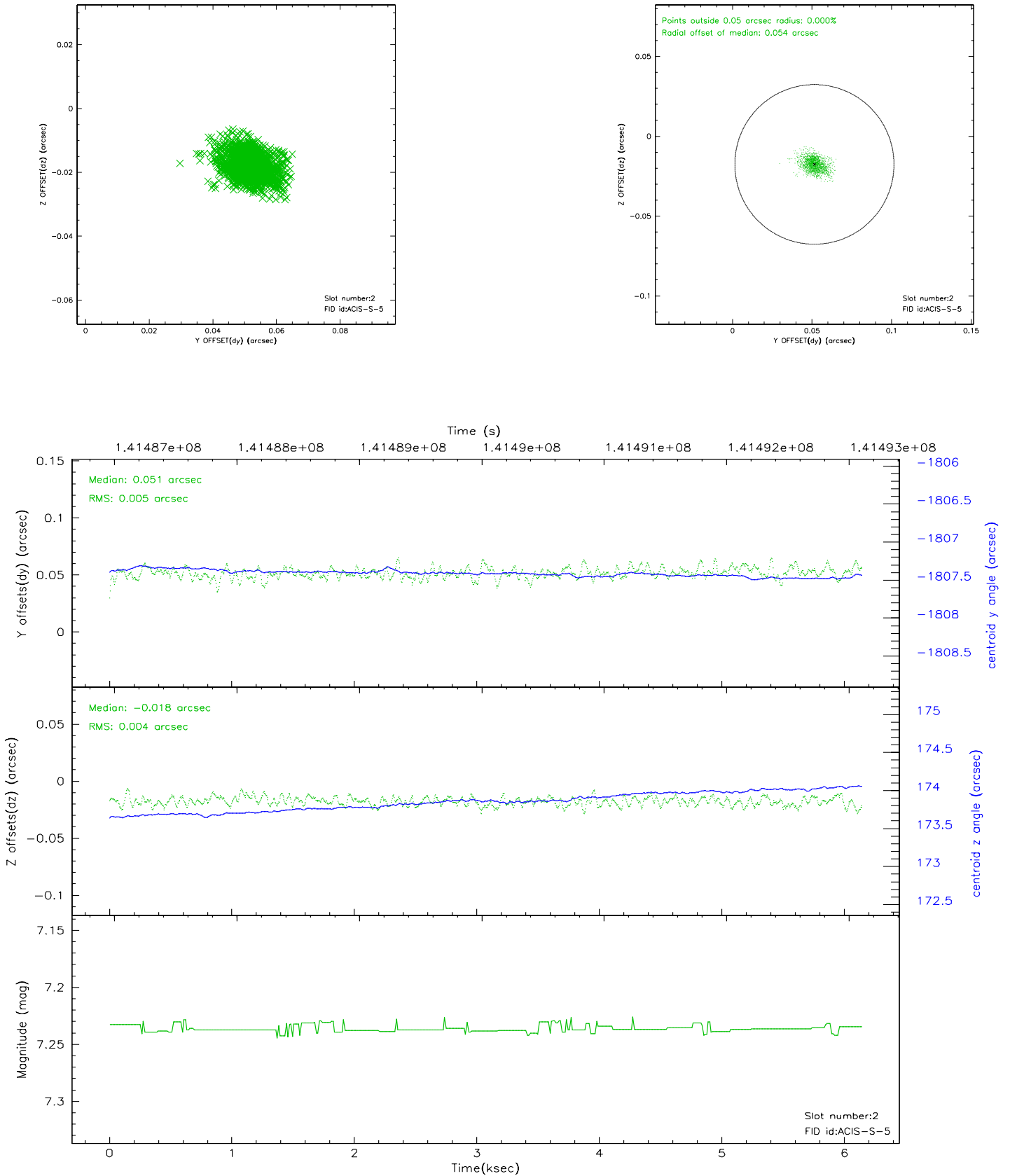
2.5.1 Slot 0



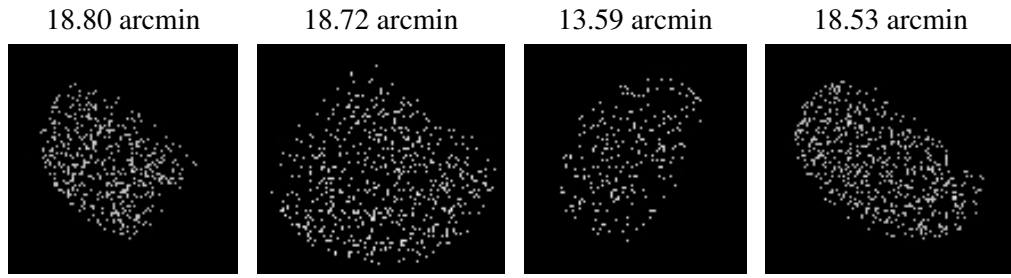
2.5.2 Slot 1



2.5.3 Slot 2



3 Point Sources



A Summary

A.1 Status

V&V Scientist	Jen Lauer
V&V Date (YYYY-MM-DD)	2006.09.21
V&V Edition	1
V&V Disposition and Status	OK
V&V Charge Time	5.987

A.2 Comments