

V&V Reference Report

L2 ASCDS Version : 8.4.5

Observation 3060 - L2 Version 4
Chandra X-Ray Center

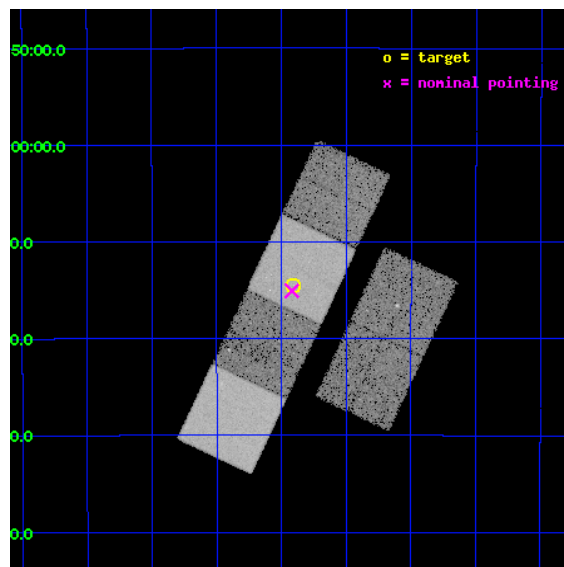
L2 Processing Date : Oct 15 2012

Contents

1	Front	2
2	OBI	3
2.1	OBI	3
2.1.1	Images	3
2.1.2	Bias	3
2.1.3	Parameters	4
2.1.4	Events	4
2.2	Compared Parameters	5
2.3	Aspect	6
2.4	Star Slots	9
2.4.1	Slot 3	9
2.4.2	Slot 4	10
2.4.3	Slot 5	11
2.4.4	Slot 6	12
2.4.5	Slot 7	13
2.5	FID Slots	14
2.5.1	Slot 0	14
2.5.2	Slot 1	15
2.5.3	Slot 2	16
A	Summary	17
A.1	Status	17
A.2	Comments	17

1 Front

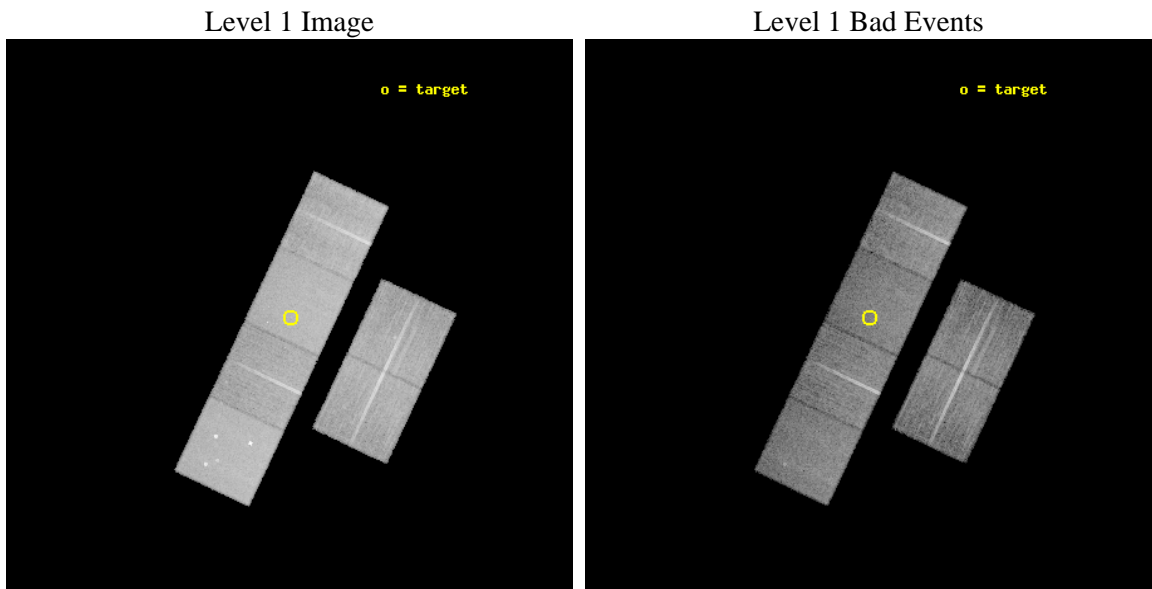
seq_num	700499	Sequence number
obs_id	3060	Observation id
title	X-RAY STUDIES OF HIGH REDSHIFT RADIO GALAXIES	Proposal title
observer	Dr. Chris Carilli	Principal investigator
object	2036-254	Source name
dtcycle	0	
cycle	P	events from which exps? Prim/Second/Both
ra_targ	309.852083	Observer's specified target RA [deg]
dec_targ	-25.241778	Observer's specified target Dec [deg]
ra_nom	309.85487517515	Nominal RA [deg]
dec_nom	-25.251157491607	Nominal Dec [deg]
roll_nom	295.2504437624	Nominal Roll [deg]
revision	4	Processing version of data
ontime	19963.723749191	Sum of GTIs [s]
livetime	19710.931058367	Livetime [s]
ontime2	19963.764789194	Sum of GTIs [s]
ontime3	19963.600629181	Sum of GTIs [s]
ontime5	19963.682709187	Sum of GTIs [s]
ontime6	19963.641669184	Sum of GTIs [s]
ontime7	19963.723749191	Sum of GTIs [s]
ontime8	19963.559589207	Sum of GTIs [s]
l2events	191140	Number of level 2 events



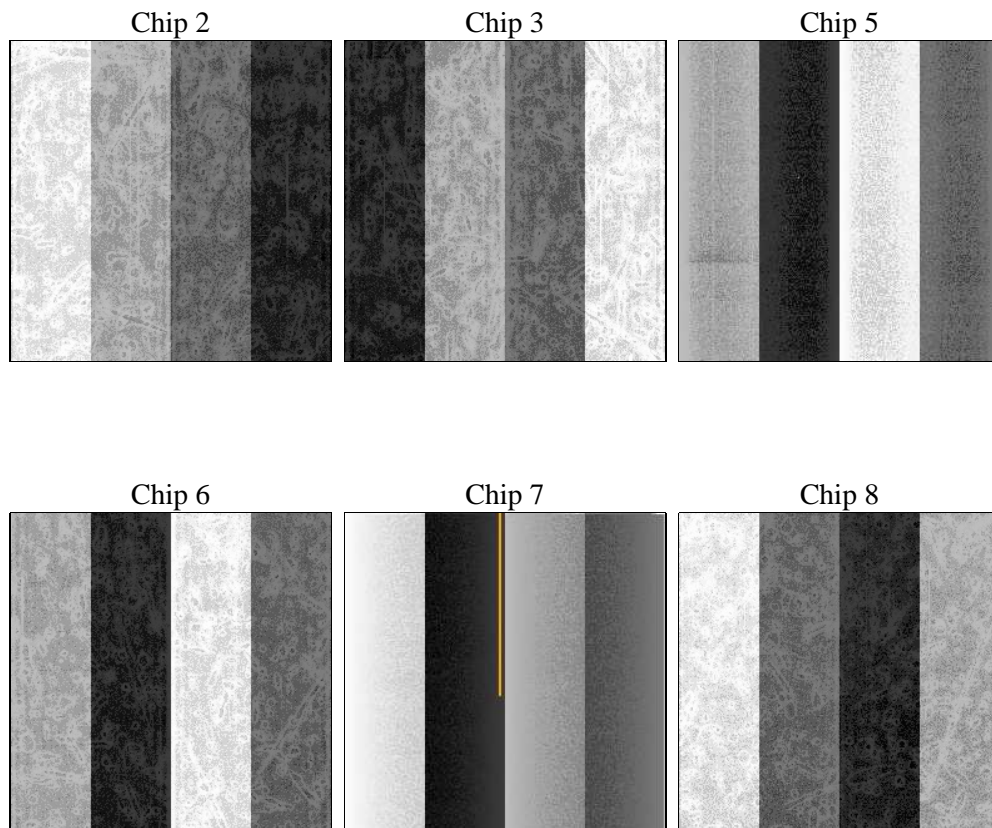
2 OBI

2.1 OBI

2.1.1 Images



2.1.2 Bias



2.1.3 Parameters

obi_num	1	Obi number	sched_exp_time	20000.000000	[s] Scheduled observation exposure time
ascdsver	8.4.5	Processing system revision	ontime	19963.723749191	Sum of GTIs [s]
caldsver	4.5.2	 	ontime2	19963.764789194	Sum of GTIs [s]
date	2012-10-15T12:21:46	Date and time of file creation	ontime3	19963.600629181	Sum of GTIs [s]
revision	4	Processing version of data	ontime5	19963.682709187	Sum of GTIs [s]
			ontime6	19963.641669184	Sum of GTIs [s]
			ontime7	19963.723749191	Sum of GTIs [s]
			ontime8	19963.559589207	Sum of GTIs [s]
			l1events	854181	Number of level 1 events

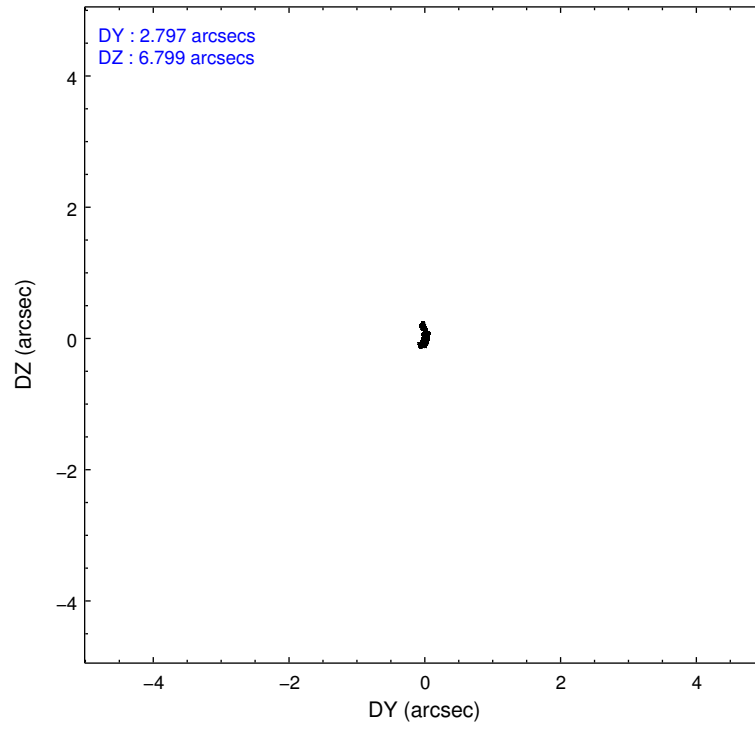
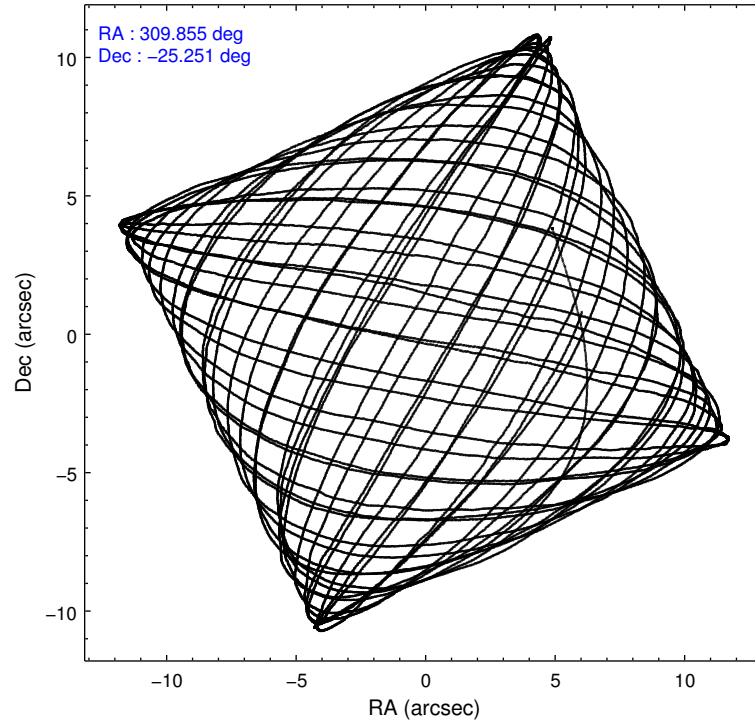
2.1.4 Events

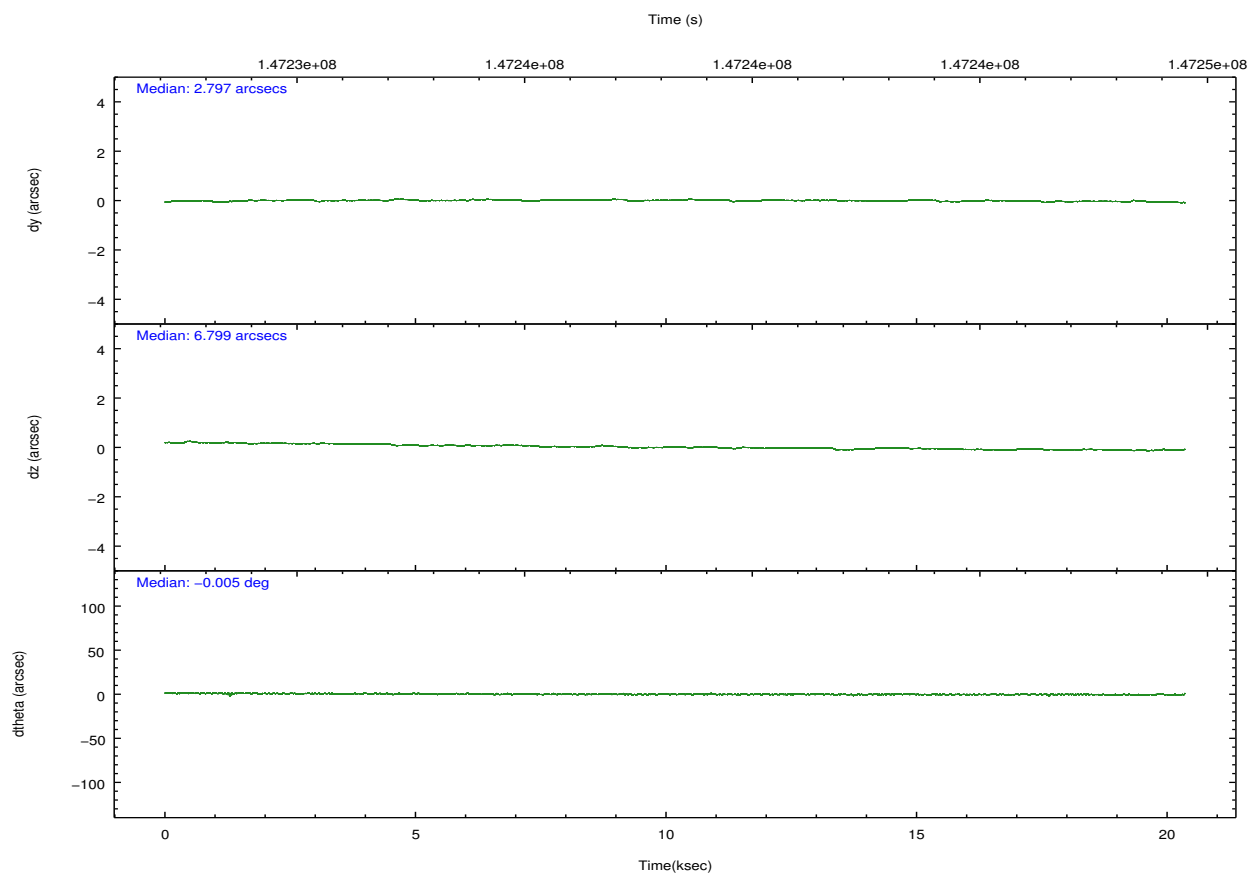
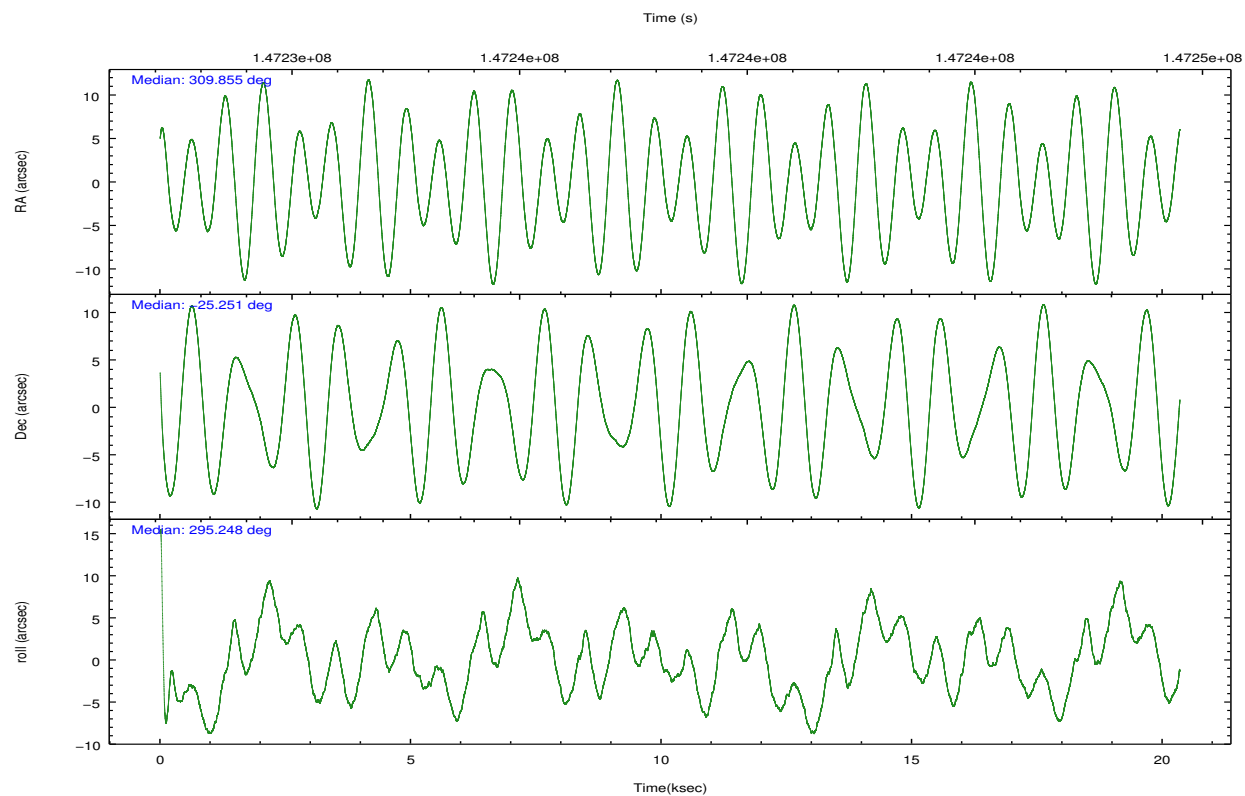
	ccd 2	ccd 3	ccd 5	ccd 6	ccd 7	ccd 8		ccd 2	ccd 3	ccd 5	ccd 6	ccd 7	ccd 8
level 1 events	123430	117643	178780	120522	160369	153437	grade 0 events	6289	6167	11032	5933	6550	9611
rejected events	109202	103784	95867	106006	93912	122893		5%	5%	6%	4%	4%	6%
rejected %	88%	88%	53%	87%	58%	80%	grade 1 events	70	70	206	64	152	94
								0%	0%	0%	0%	0%	0%
							grade 2 events	2828	2540	23530	2839	13279	6710
								2%	2%	13%	2%	8%	4%
							grade 3 events	1380	1356	3547	1429	6139	3151
								1%	1%	1%	1%	3%	2%
							grade 4 events	1391	1424	3235	1412	5924	3016
								1%	1%	1%	1%	3%	1%
							grade 5 events	4620	5098	13174	5338	15342	6930
								3%	4%	7%	4%	9%	4%
							grade 6 events	2344	2376	41580	2909	34579	8059
								1%	2%	23%	2%	21%	5%
							grade 7 events	104508	98612	82476	100598	78404	115866
								84%	83%	46%	83%	48%	75%

2.2 Compared Parameters

Parameter	Planned	Actual	Parameter	Planned	Actual
Instrument	ACIS	ACIS	Obspar format version number	7	7
Detector	ACIS-235678	ACIS-235678	Obspar file type	PREDICTED	ACTUAL
Grating	NONE	NONE	Obspar update status	NONE	UPDATED
Data mode	FAINT	FAINT	Number of optional ACIS chips dropped	0	0
Observation mode	POINTING	POINTING	On-chip summing requested	N	N
[deg] Pointing RA	309.829913	309.8548751751506	Subarray requested	NONE	NONE
[deg] Pointing Dec	-25.235891	-25.25115749160673	Alternating exposures requested	N	N
[deg] Pointing Roll	295.083149	295.2504437624047	[s] Primary exposure time	0.000000	3.2
[mm] SIM focus pos	-0.684267	-0.6828225247311905			
[mm] SIM defocus	0	0.001444936568705701			
[mm] SIM translation stage pos	-190.132523	-190.1425803651734			
[mm] SIM translation stage offset	0	0.01005778216563158			
[s] Observation start time (MET)	147228485.184000	147227440.41693			
Observation start date	2002-09-01T00:47:01	2002-09-01T00:30:40			
[s] Observation end time (MET)	147248485.184000	147249281.63033			
Observation end date	2002-09-01T06:20:21	2002-09-01T06:34:41			
Read mode	TIMED	TIMED			

2.3 Aspect



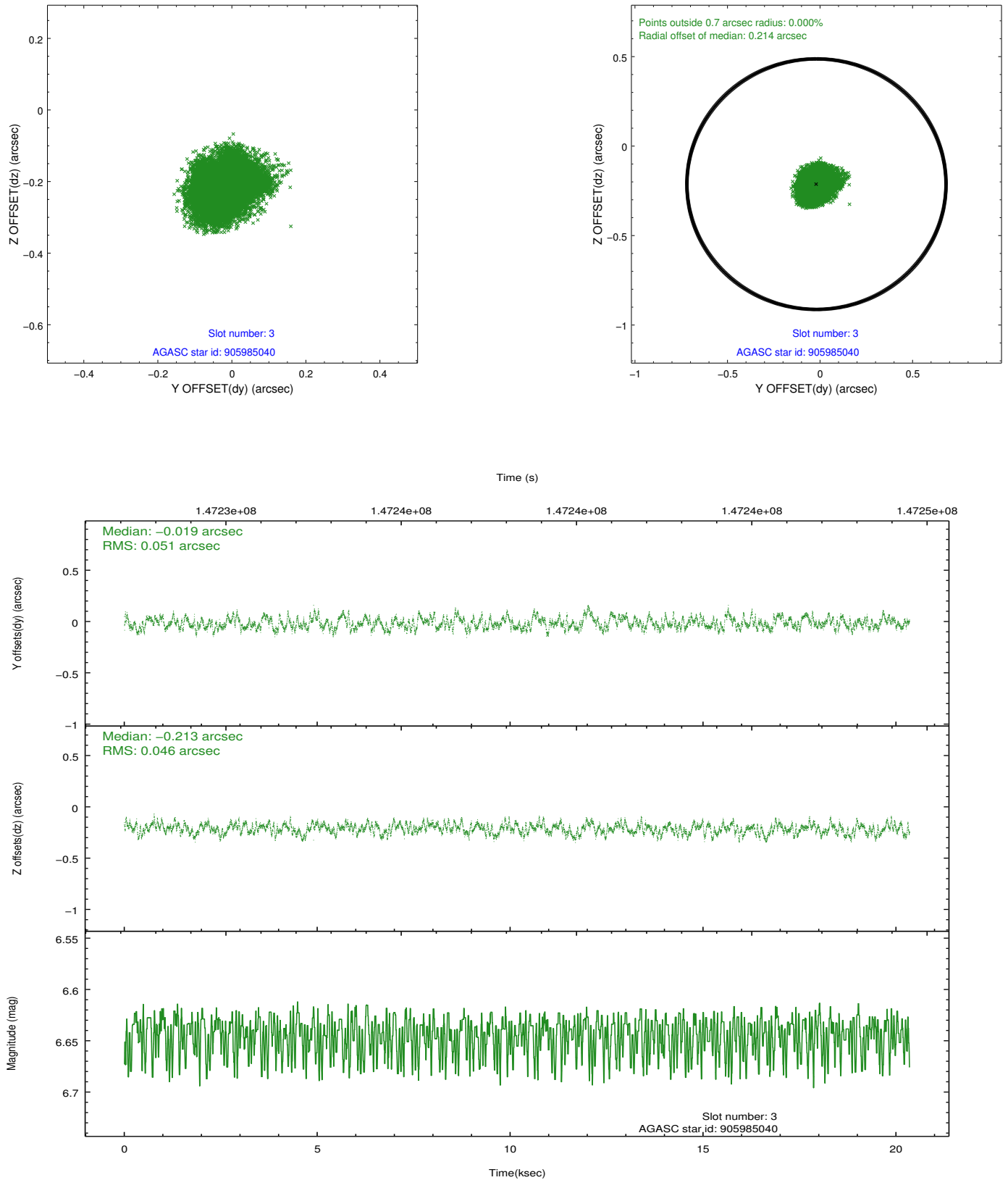


Slot Statistics

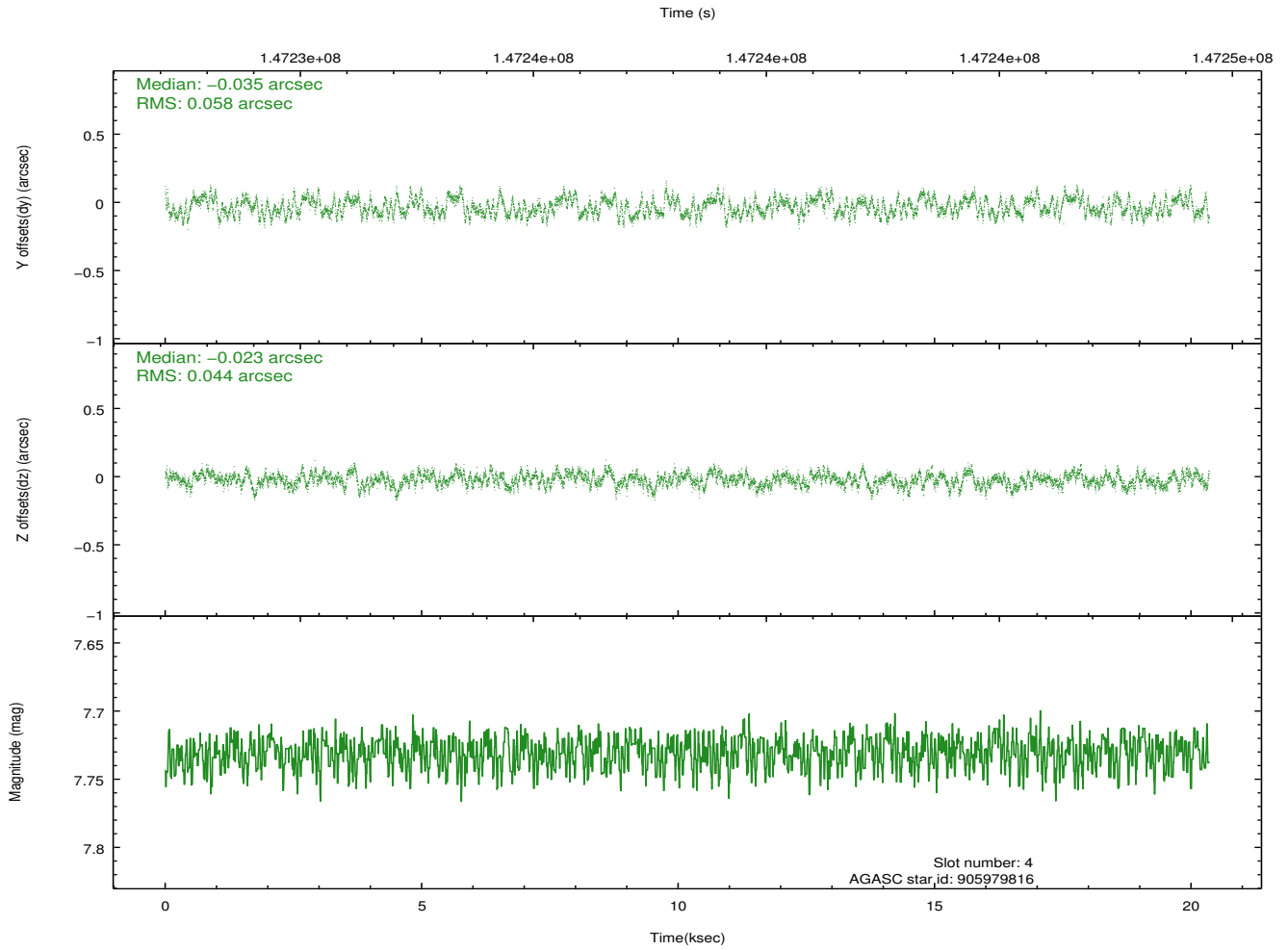
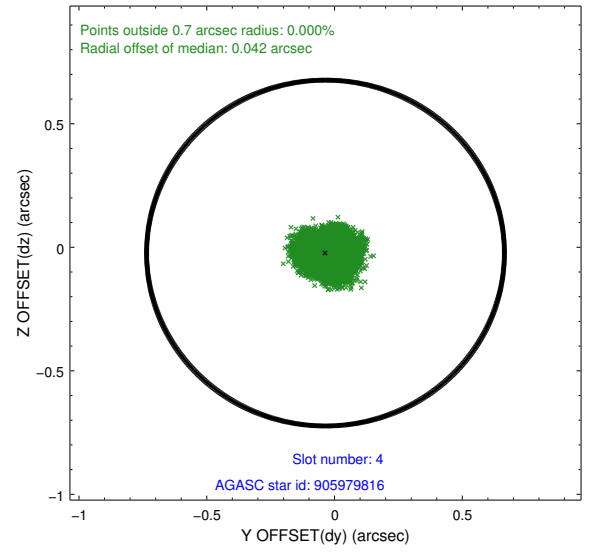
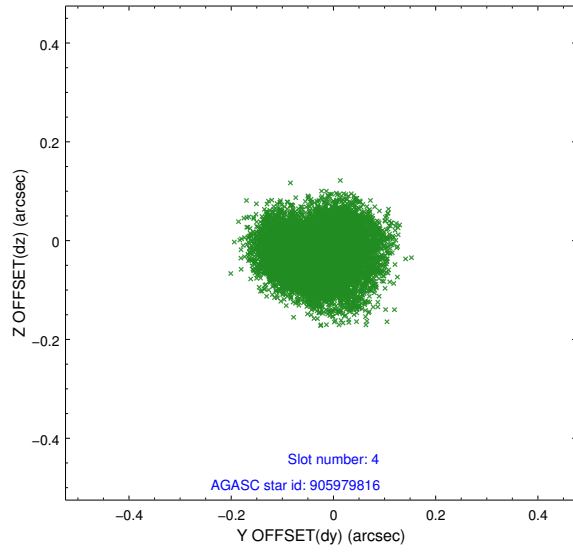
slot	status	id	mag	n_pts	med_dy	med_dz	dr1	dr2	ra	dec	mean_y	mean_z
0	FID	ACIS-S-2	7.12	4964	-0.027	0.005	0.007	0.011	0.000000	0.000000	-755.44	-1727.93
1	FID	ACIS-S-4	7.20	4964	-0.011	0.012	0.005	0.010	0.000000	0.000000	2157.75	180.40
2	FID	ACIS-S-5	7.24	4964	0.007	-0.008	0.007	0.011	0.000000	0.000000	-1808.03	174.22
3	GUIDE	905985040	6.64	9929	-0.019	-0.213	0.076	0.111	309.467617	-25.109217	-912.17	-876.86
4	GUIDE	905979816	7.73	9928	-0.035	-0.023	0.080	0.121	309.213643	-25.636405	462.05	-2424.62
5	GUIDE	907681776	9.87	9922	-0.033	0.125	0.135	0.212	310.488734	-25.646315	2249.36	1308.15
6	GUIDE	907675608	8.62	9926	-0.183	-0.006	0.106	0.161	310.605739	-25.324874	1366.93	2148.02
7	BAD	907676176	10.62	7046	0.371	0.165	0.212	0.353	310.198332	-24.524102	-1809.38	2179.80

2.4 Star Slots

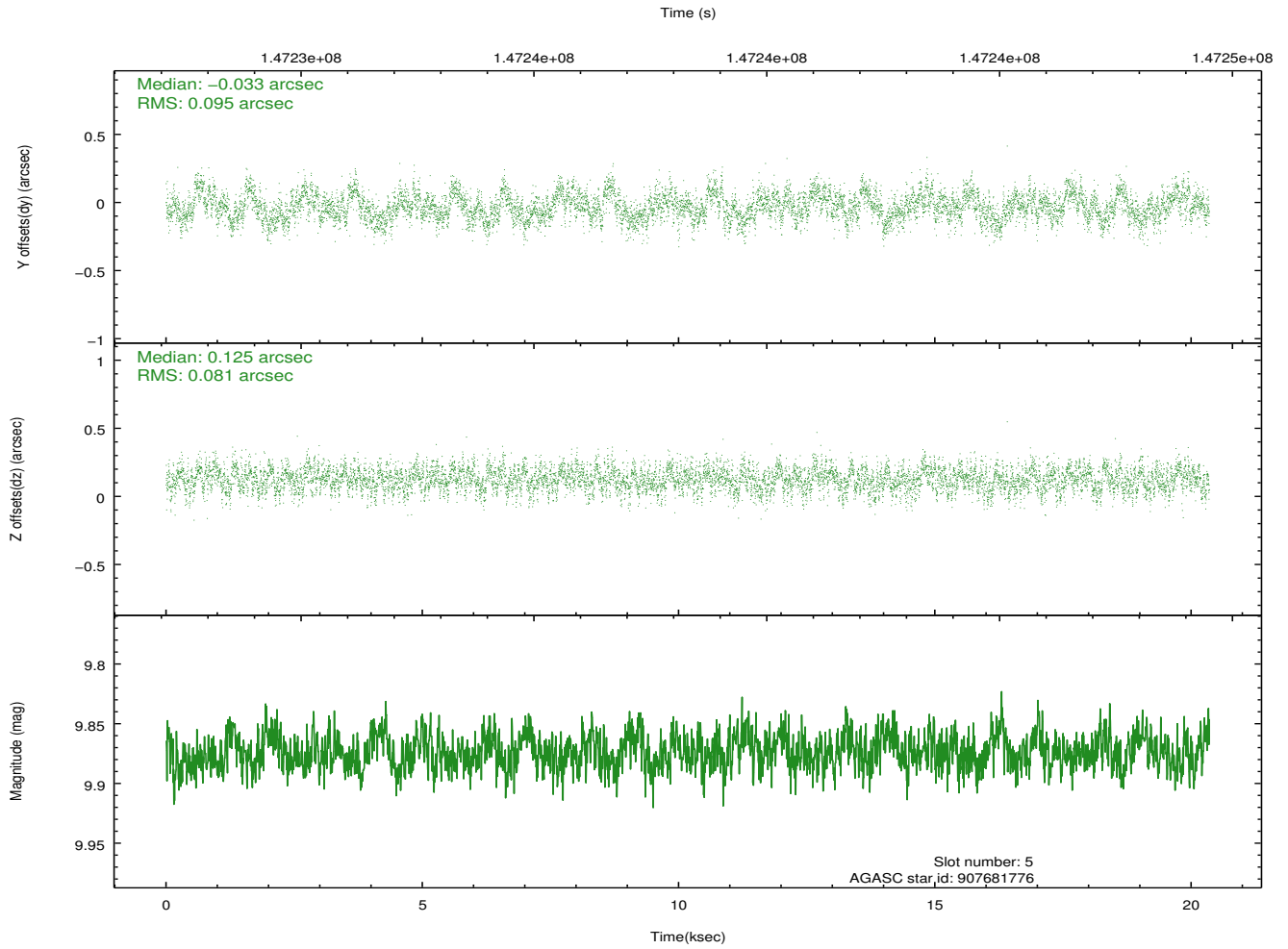
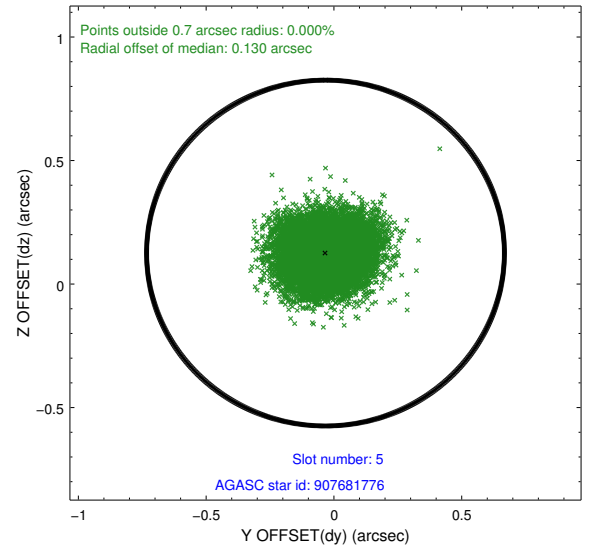
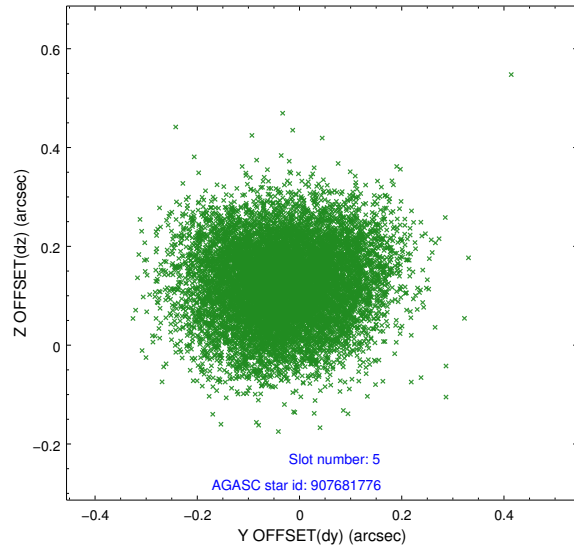
2.4.1 Slot 3



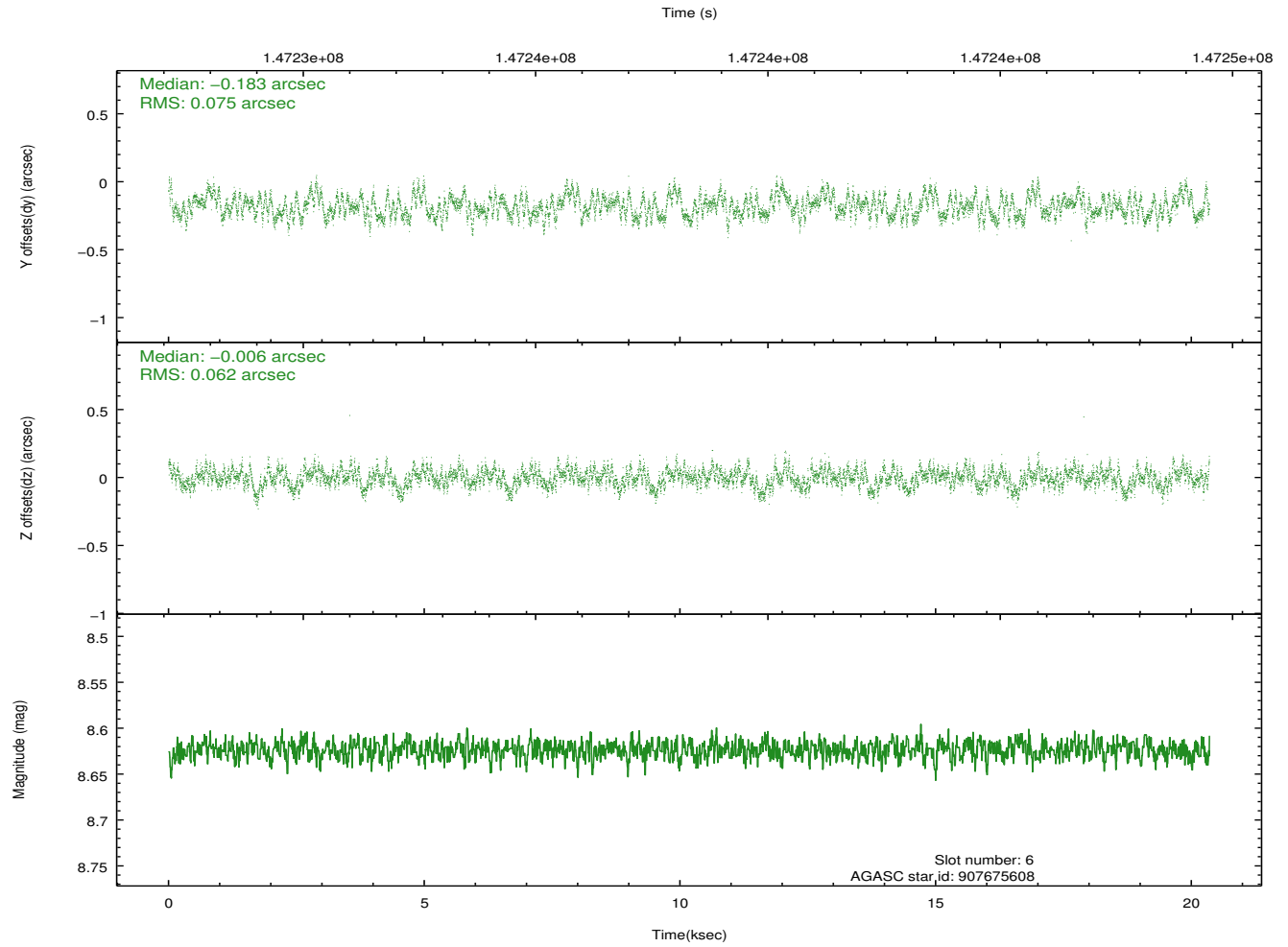
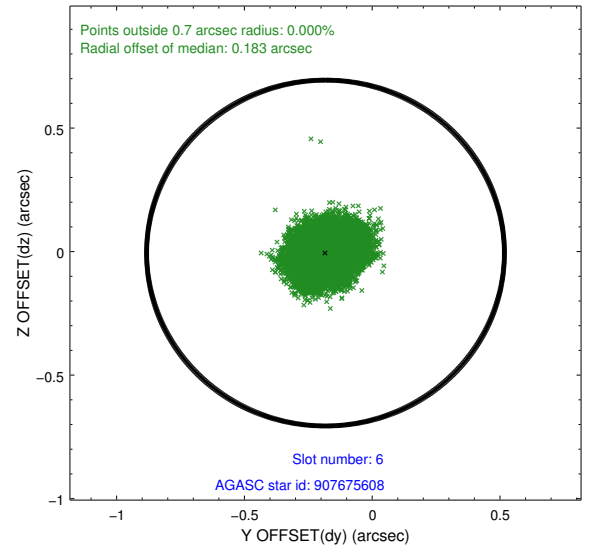
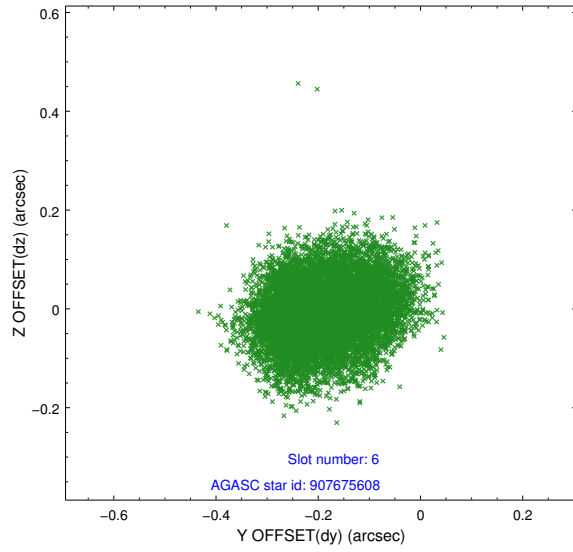
2.4.2 Slot 4



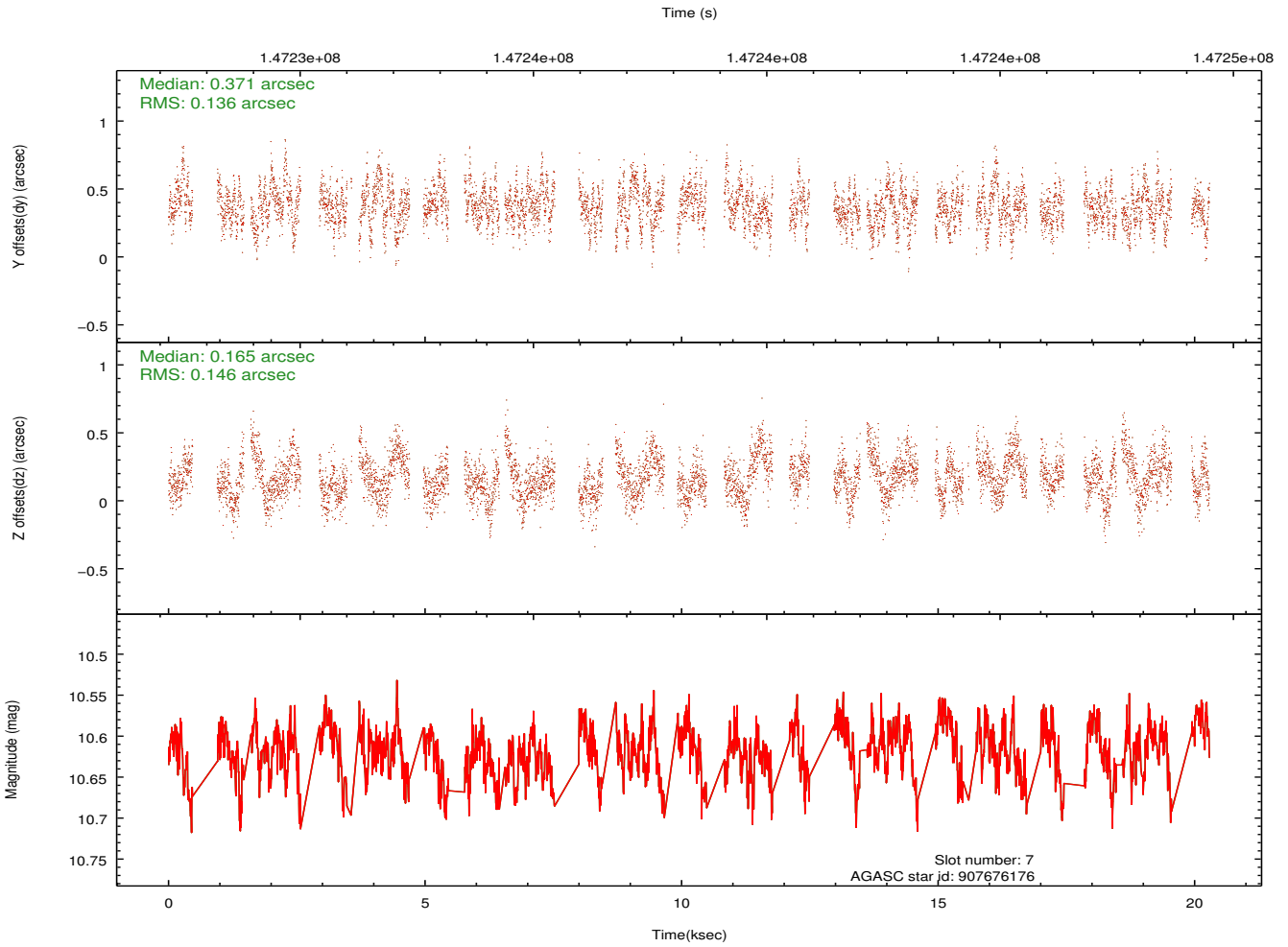
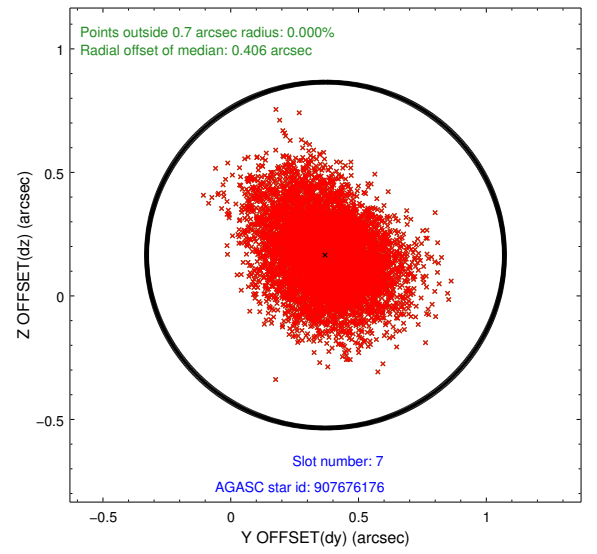
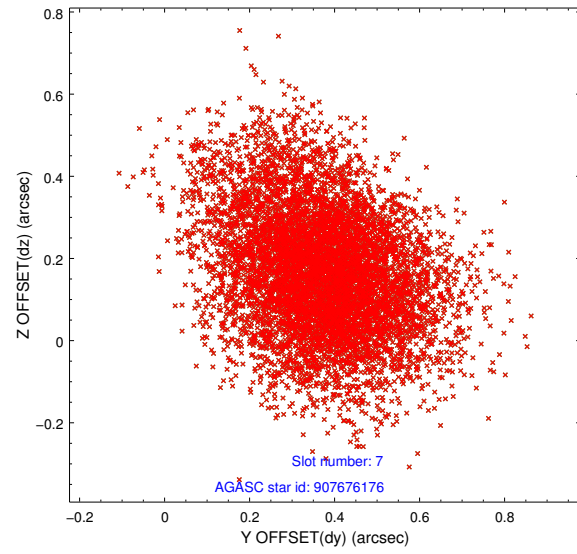
2.4.3 Slot 5



2.4.4 Slot 6

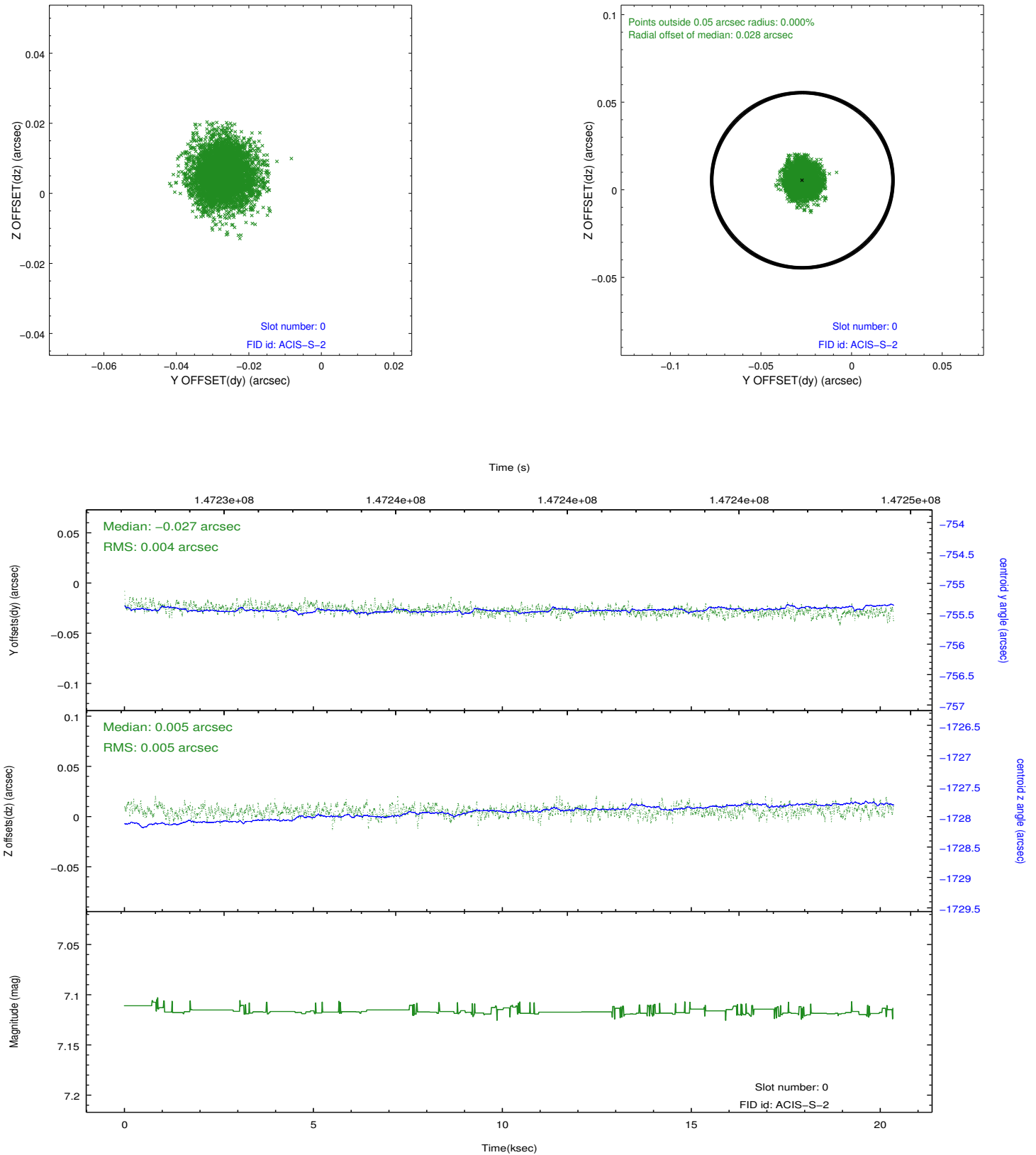


2.4.5 Slot 7

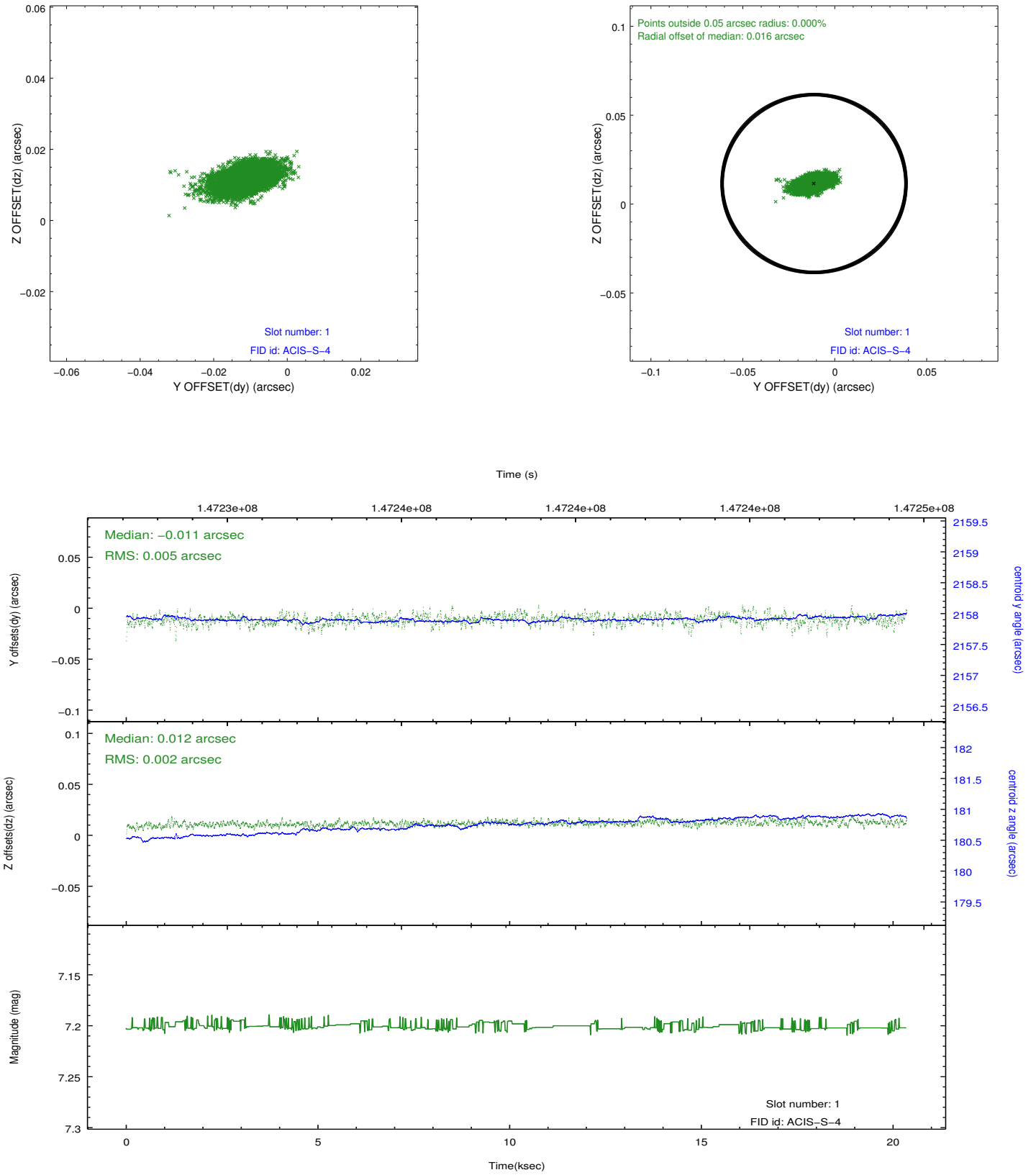


2.5 FID Slots

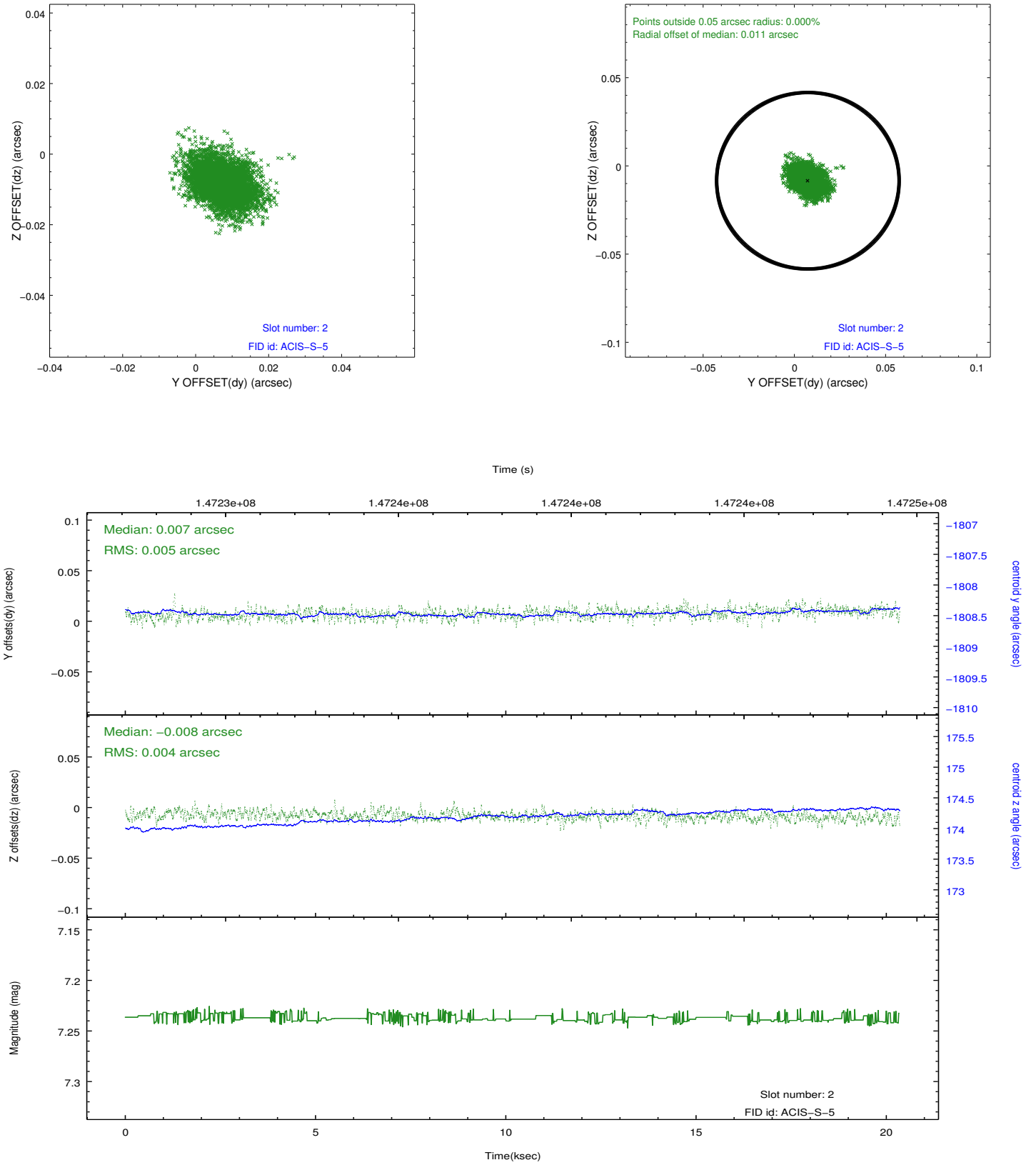
2.5.1 Slot 0



2.5.2 Slot 1



2.5.3 Slot 2



A Summary

A.1 Status

V&V Scientist	Jen Lauer
V&V Date (YYYY-MM-DD)	2012.10.24
V&V Edition	1
V&V Disposition and Status	OK
V&V Charge Time	19.961

A.2 Comments