

V&V Reference Report

L2 ASCDS Version : 8.4.5

Observation 2860 - L2 Version 3
Chandra X-Ray Center

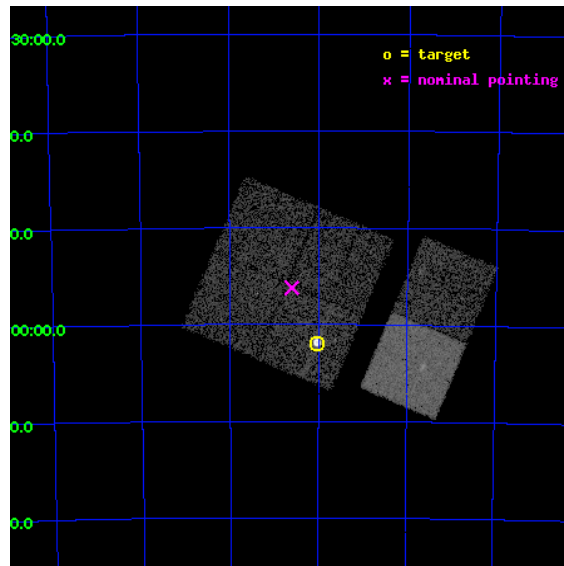
L2 Processing Date : Oct 9 2012

Contents

1	Front	2
2	OBI	3
2.1	OBI	3
2.1.1	Images	3
2.1.2	Bias	3
2.1.3	Parameters	4
2.1.4	Events	4
2.2	Compared Parameters	5
2.3	Aspect	6
2.4	Star Slots	9
2.4.1	Slot 3	9
2.4.2	Slot 4	10
2.4.3	Slot 5	11
2.4.4	Slot 6	12
2.4.5	Slot 7	13
2.5	FID Slots	14
2.5.1	Slot 0	14
2.5.2	Slot 1	15
2.5.3	Slot 2	16
A	Summary	17
A.1	Status	17
A.2	Comments	17

1 Front

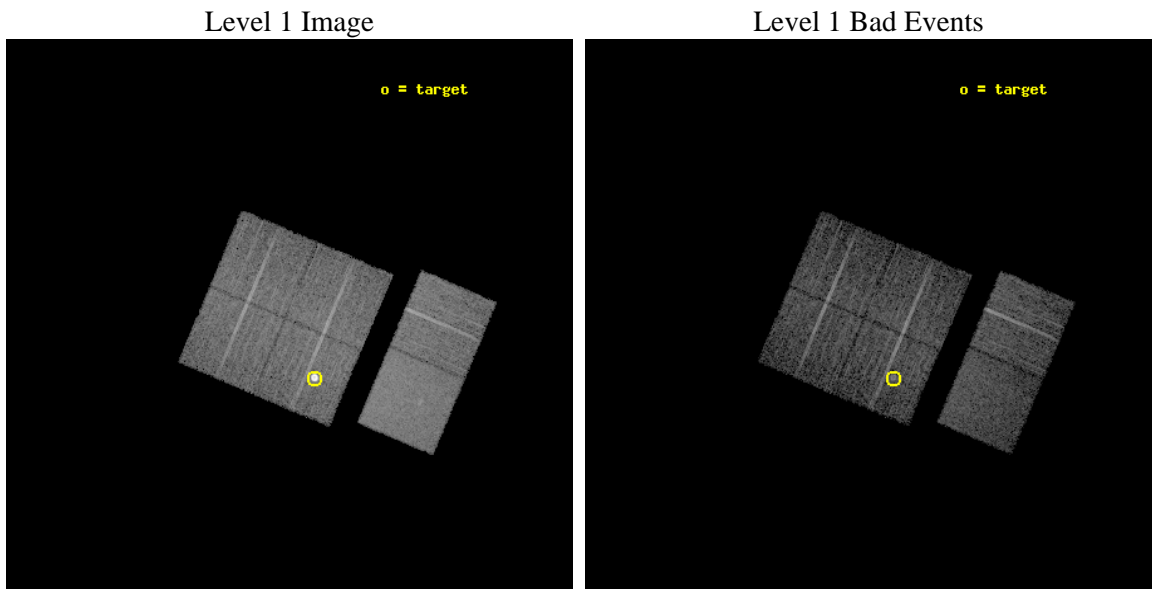
seq_num	590249	Sequence number
obs_id	2860	Observation id
title	AO3B ACIS-I CALIBRATION OBSERVATIONS OF E0102-72	Proposal title
observer	Dr. CXC Calibration	Principal investigator
object	E0102-72.3 [Chip I3, T=120, Offsets=-4,4,0]	Source name
dtcycle	0	
cycle	P	events from which exps? Prim/Second/Both
ra_targ	16.01	Observer's specified target RA [deg]
dec_targ	-72.032028	Observer's specified target Dec [deg]
ra_nom	16.150542964836	Nominal RA [deg]
dec_nom	-71.936936777164	Nominal Dec [deg]
roll_nom	112.94696605502	Nominal Roll [deg]
revision	3	Processing version of data
ontime	7654.3999714851	Sum of GTIs [s]
livetime	7557.4753501199	Livetime [s]
ontime0	7654.3999714851	Sum of GTIs [s]
ontime1	7654.3999714851	Sum of GTIs [s]
ontime2	7654.3999714851	Sum of GTIs [s]
ontime3	7654.3999714851	Sum of GTIs [s]
ontime6	7654.3999714851	Sum of GTIs [s]
ontime7	7654.3999714851	Sum of GTIs [s]
l2events	76583	Number of level 2 events



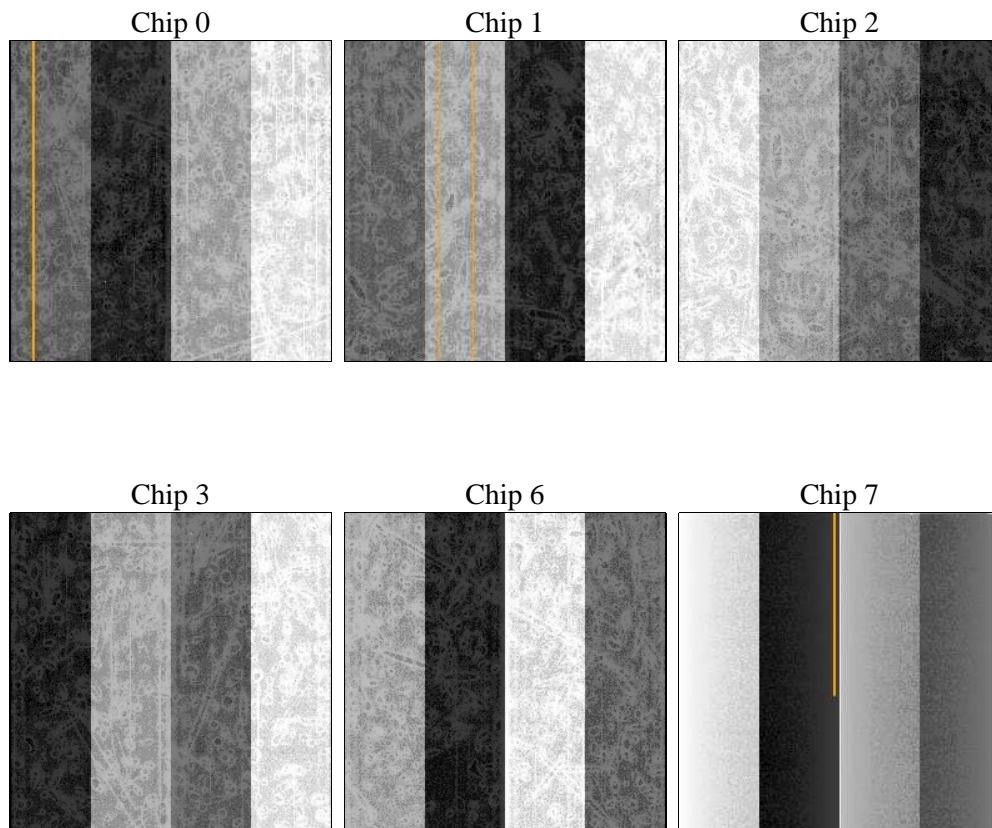
2 OBI

2.1 OBI

2.1.1 Images



2.1.2 Bias



2.1.3 Parameters

obi_num	0	Obi number	sched_exp_time	7900.000000	[s] Scheduled observation exposure time
ascdsver	8.4.5	Processing system revision	ontime	7654.3999714851	Sum of GTIs [s]
caldsver	4.5.2	 	ontime0	7654.3999714851	Sum of GTIs [s]
date	2012-10-10T00:56:38	Date and time of file creation	ontime1	7654.3999714851	Sum of GTIs [s]
revision	3	Processing version of data	ontime2	7654.3999714851	Sum of GTIs [s]
			ontime3	7654.3999714851	Sum of GTIs [s]
			ontime6	7654.3999714851	Sum of GTIs [s]
			ontime7	7654.3999714851	Sum of GTIs [s]
			l1events	332554	Number of level 1 events

2.1.4 Events

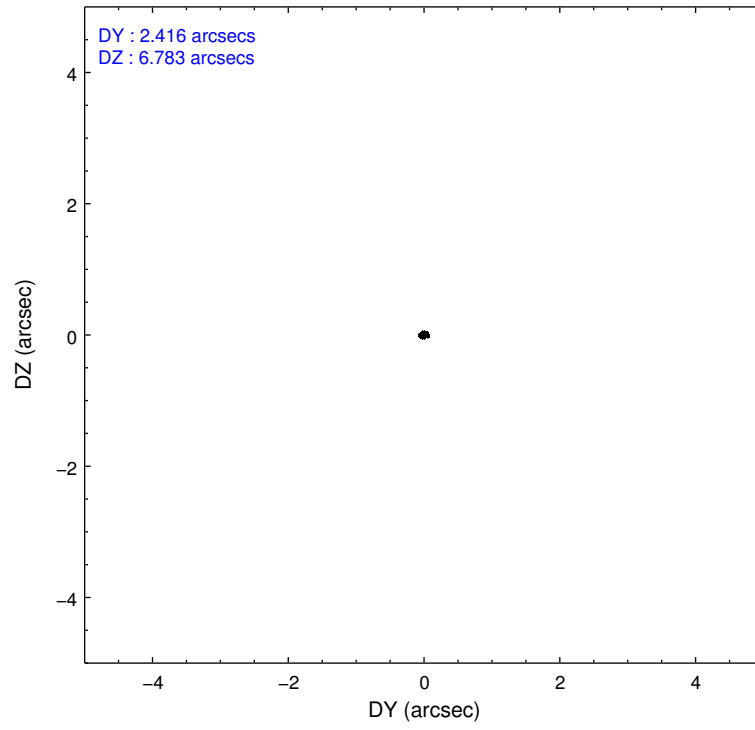
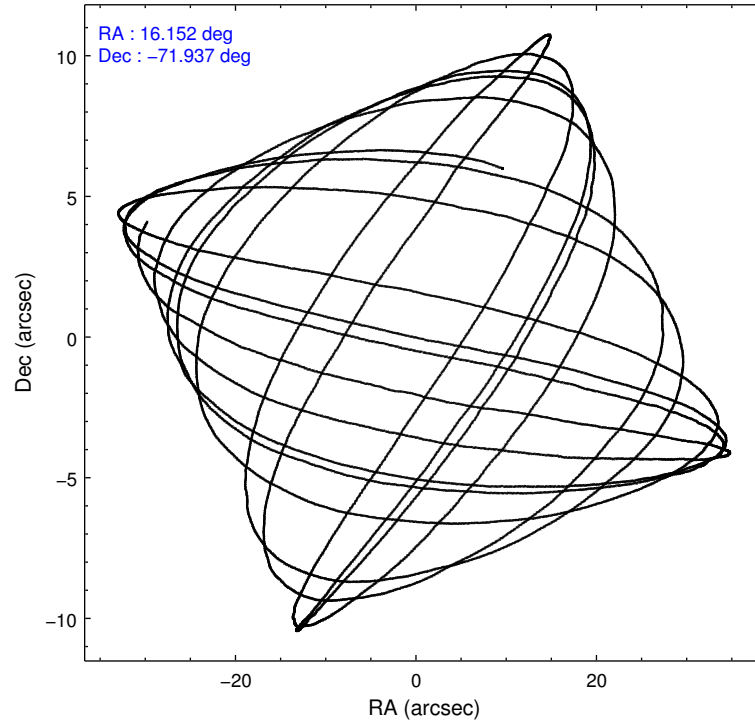
	ccd 0	ccd 1	ccd 2	ccd 3	ccd 6	ccd 7		ccd 0	ccd 1	ccd 2	ccd 3	ccd 6	ccd 7
level 1 events	45533	44940	49698	73591	53726	65066	grade 0 events	2502	2523	2467	24519	2493	2626
rejected events	39681	38785	43969	43022	47671	37922		5%	5%	4%	33%	4%	4%
rejected %	87%	86%	88%	58%	88%	58%	grade 1 events	31	30	23	202	21	78
								0%	0%	0%	0%	0%	0%
							grade 2 events	1178	1277	1257	2887	1201	5349
								2%	2%	2%	3%	2%	8%
							grade 3 events	571	653	530	998	575	2468
								1%	1%	1%	1%	1%	3%
							grade 4 events	549	587	522	1004	576	2451
								1%	1%	1%	1%	1%	3%
							grade 5 events	1842	2039	1667	2101	2228	6265
								4%	4%	3%	2%	4%	9%
							grade 6 events	1060	1121	957	1182	1211	14273
								2%	2%	1%	1%	2%	21%
							grade 7 events	37800	36710	42275	40698	45421	31556
								83%	81%	85%	55%	84%	48%

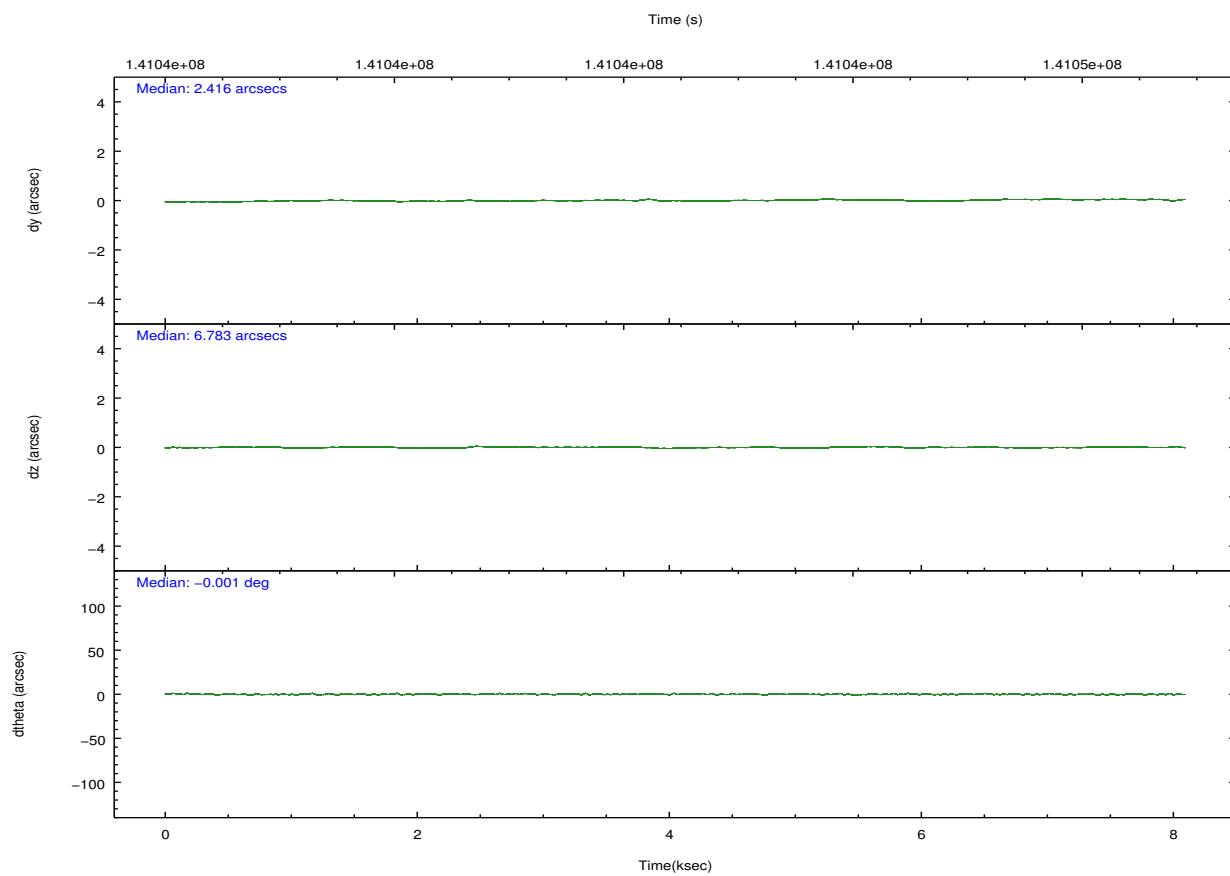
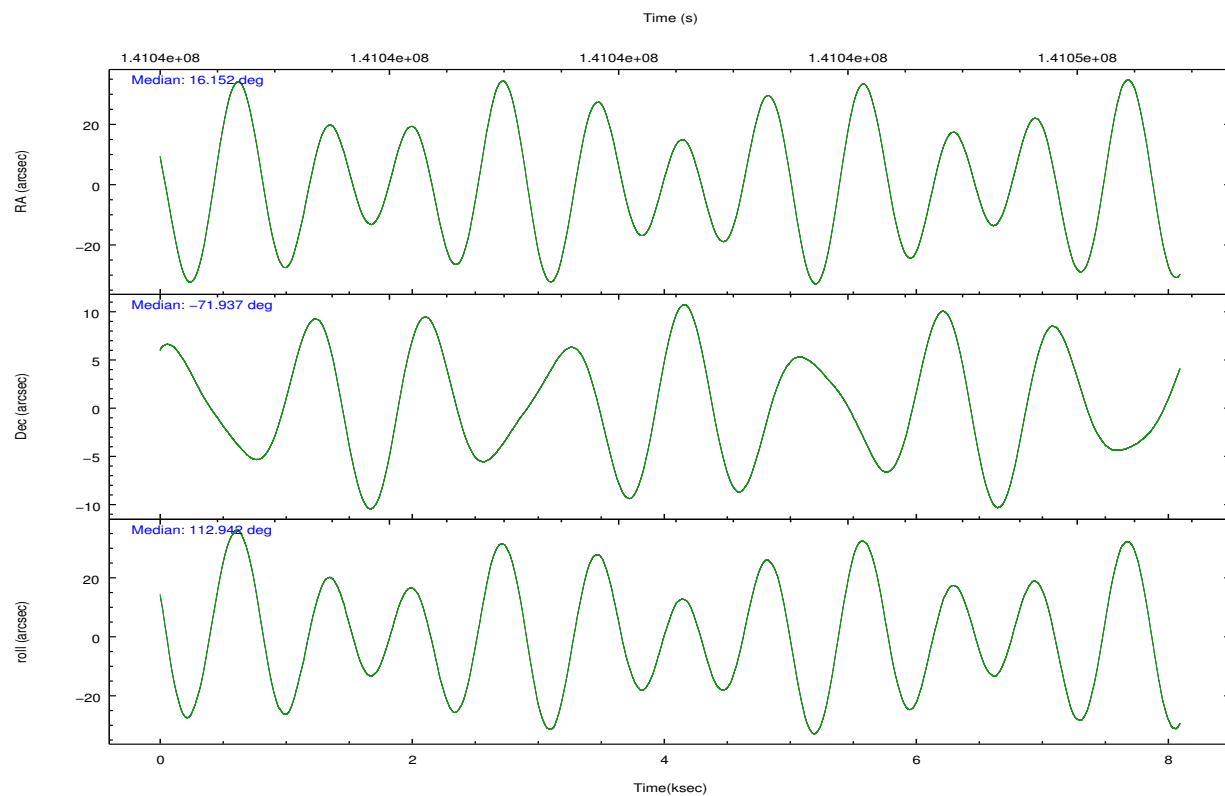
2.2 Compared Parameters

Parameter	Planned	Actual
Instrument	ACIS	ACIS
Detector	ACIS-012367	ACIS-012367
Grating	NONE	NONE
Data mode	FAINT	FAINT
Observation mode	POINTING	POINTING
[deg] Pointing RA	16.221453	16.15054296483564
[deg] Pointing Dec	-71.953351	-71.93693677716411
[deg] Pointing Roll	112.805700	112.9469660550169
[s] Window start time (MET)	139276864.184000	139276864.184000
[s] Window stop time (MET)	141782464.184000	141782464.184000
[mm] SIM focus pos	-0.782348	-0.7809083437167272
[mm] SIM defocus	0	0.001439871863259334
[mm] SIM translation stage pos	-233.592463	-233.5874344608287
[mm] SIM translation stage offset	0	-0.005018542100998502
[s] Observation start time (MET)	141038593.184000	141038217.51243
Observation start date	2002-06-21T09:22:09	2002-06-21T09:16:57
[s] Observation end time (MET)	141046493.184000	141046627.12527
Observation end date	2002-06-21T11:33:49	2002-06-21T11:37:07
Read mode	TIMED	TIMED

Parameter	Planned	Actual
Obspar format version number	7	7
Obspar file type	PREDICTED	ACTUAL
Obspar update status	NONE	UPDATED
Number of optional ACIS chips dropped	0	0
On-chip summing requested	N	N
Subarray requested	NONE	NONE
Alternating exposures requested	N	N
[s] Primary exposure time	0.000000	3.2

2.3 Aspect



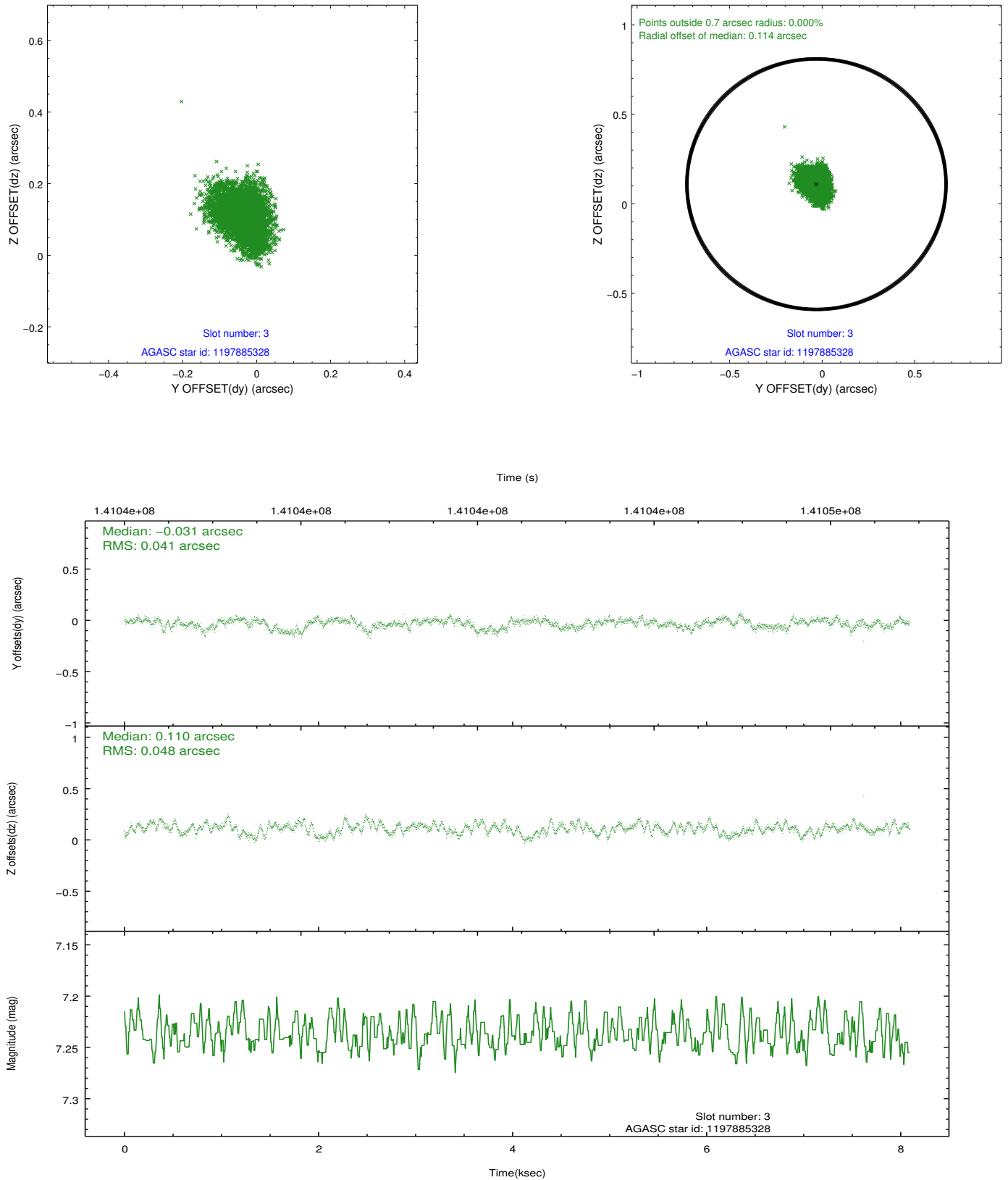


Slot Statistics

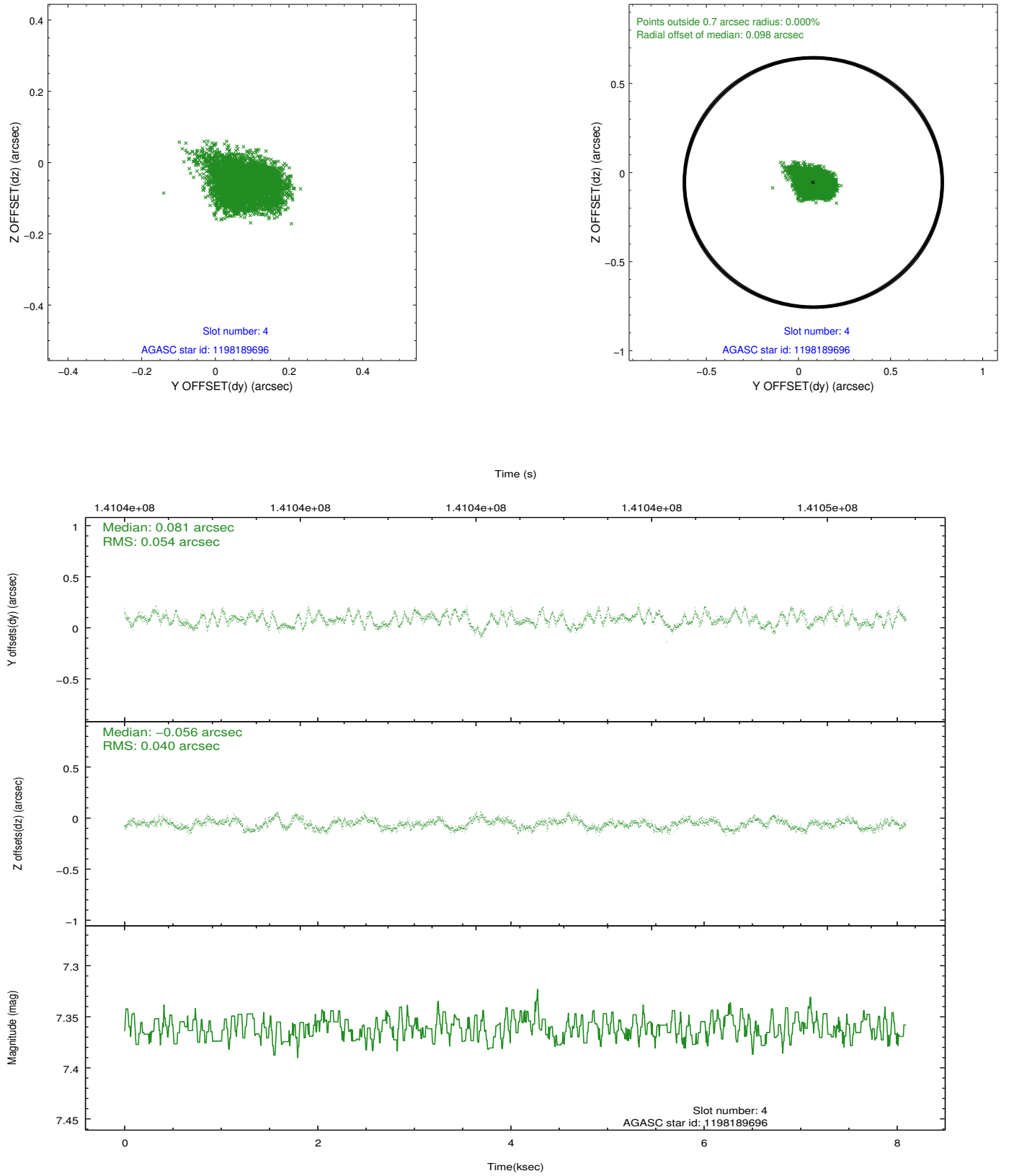
slot	status	id	mag	n_pts	med_dy	med_dz	dr1	dr2	ra	dec	mean_y	mean_z
0	FID	ACIS-I-1	7.25	1974	-0.002	0.013	0.006	0.011	0.000000	0.000000	937.37	-830.18
1	FID	ACIS-I-5	7.24	1974	-0.051	0.048	0.006	0.011	0.000000	0.000000	-1810.36	1067.06
2	FID	ACIS-I-6	7.26	1974	-0.038	0.008	0.007	0.011	0.000000	0.000000	402.18	1712.26
3	GUIDE	1197885328	7.24	3949	-0.031	0.110	0.068	0.108	16.283090	-71.733943	701.90	-369.49
4	GUIDE	1198189696	7.36	3949	0.081	-0.056	0.073	0.113	15.223750	-72.697522	-2063.00	2027.08
5	GUIDE	1197750936	7.58	3949	-0.074	-0.103	0.083	0.118	15.387940	-71.549550	1702.10	315.95
6	GUIDE	1197884712	8.30	3948	0.057	-0.036	0.060	0.100	16.087398	-72.252690	-935.34	554.17
7	GUIDE	1197878768	9.62	3947	-0.031	0.097	0.121	0.208	16.656786	-71.304581	1957.35	-1366.50

2.4 Star Slots

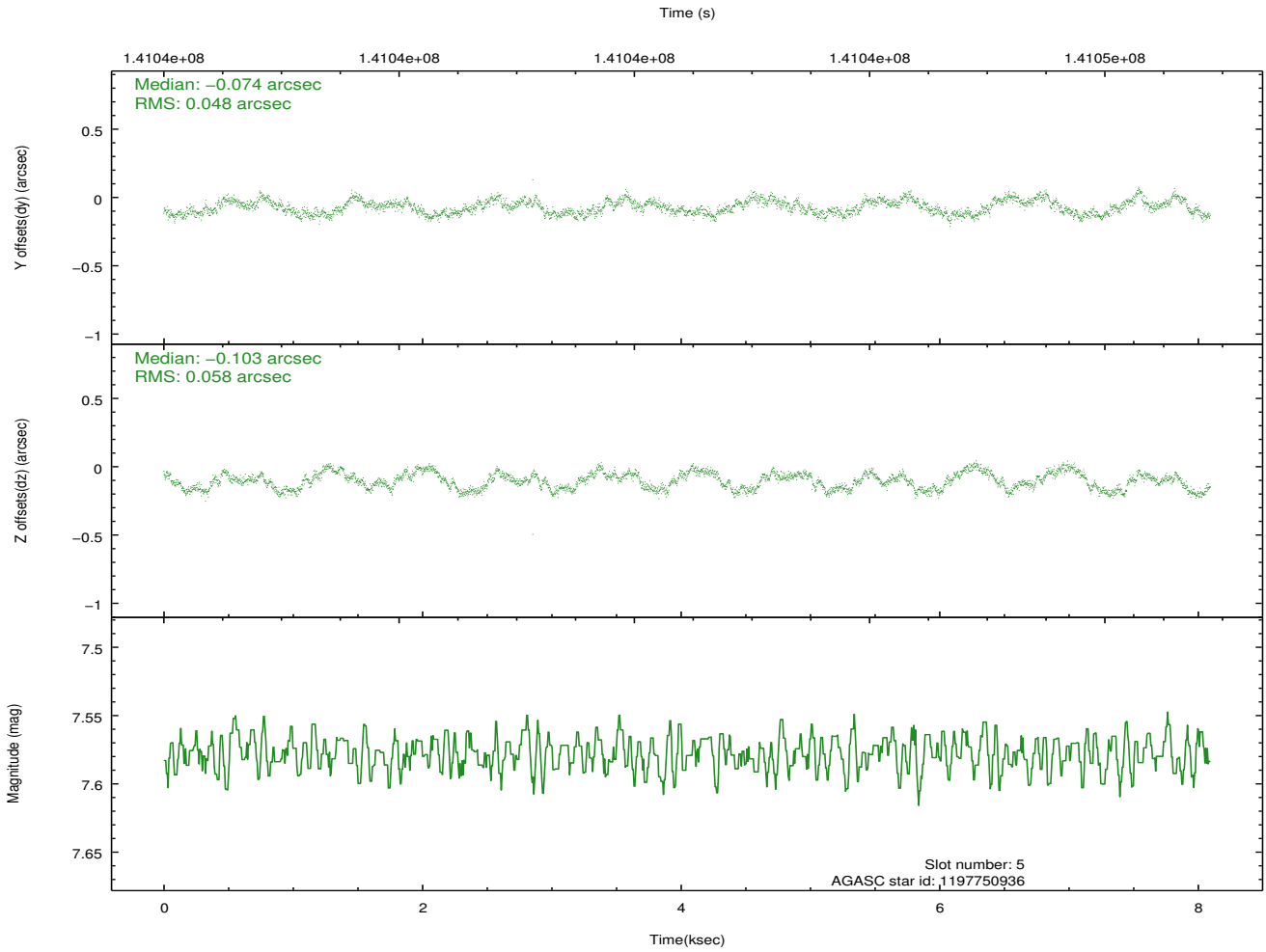
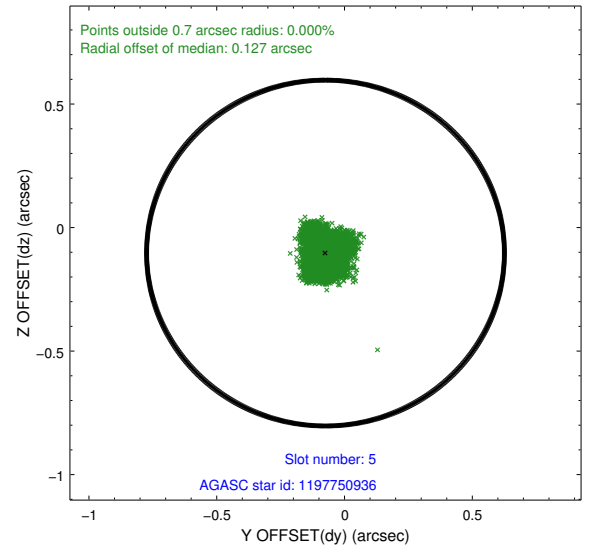
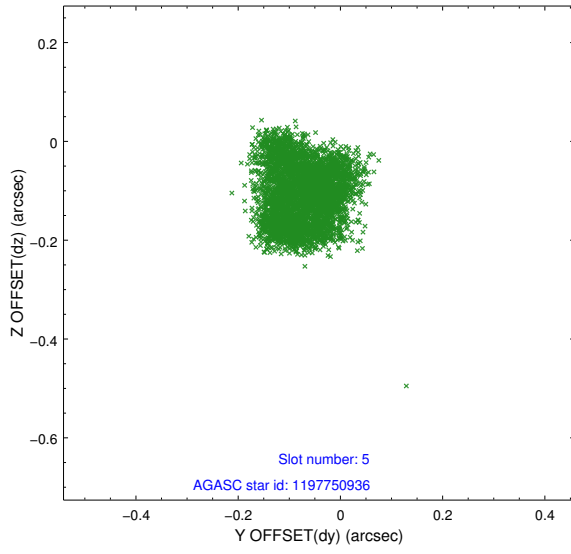
2.4.1 Slot 3



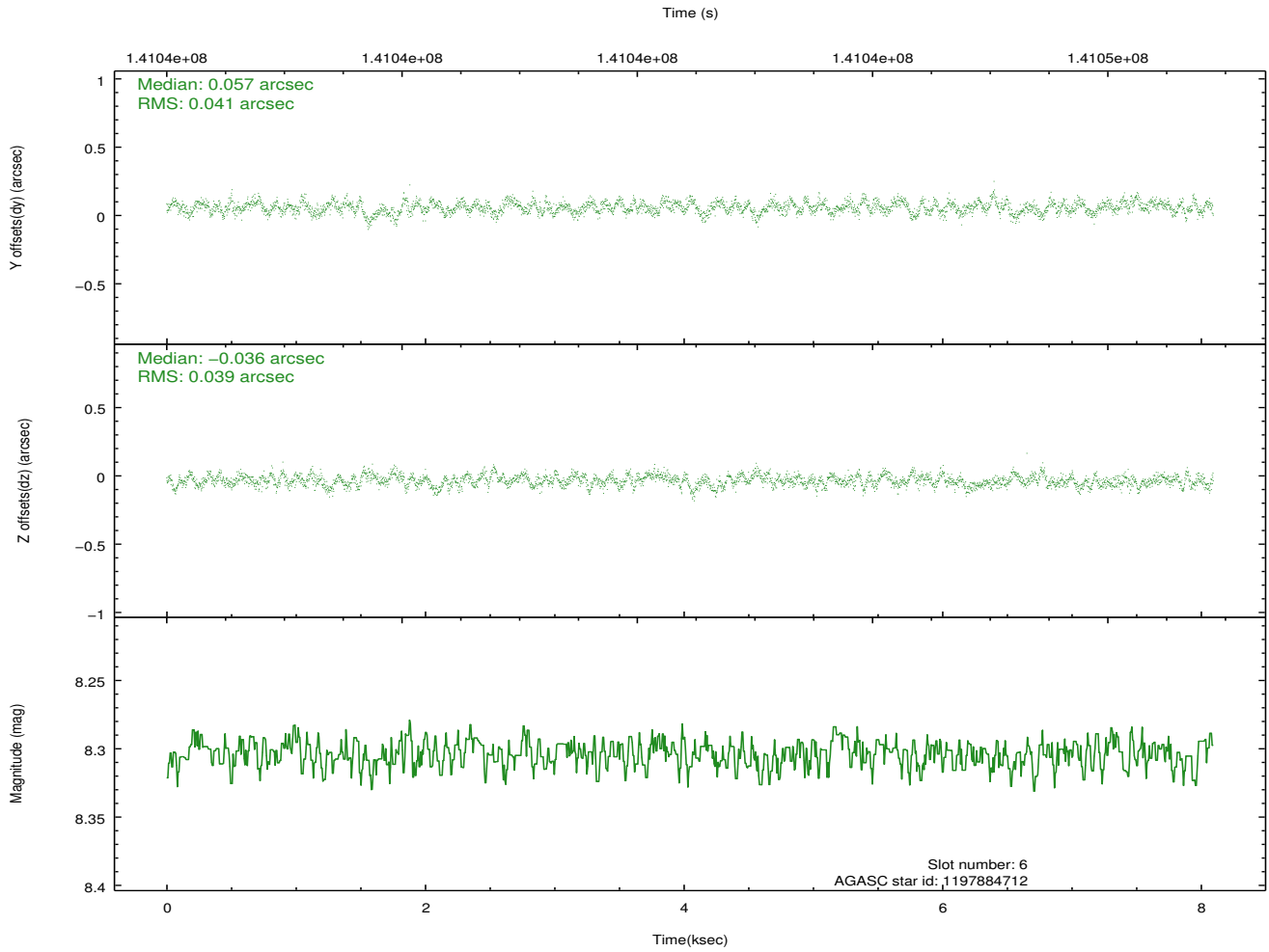
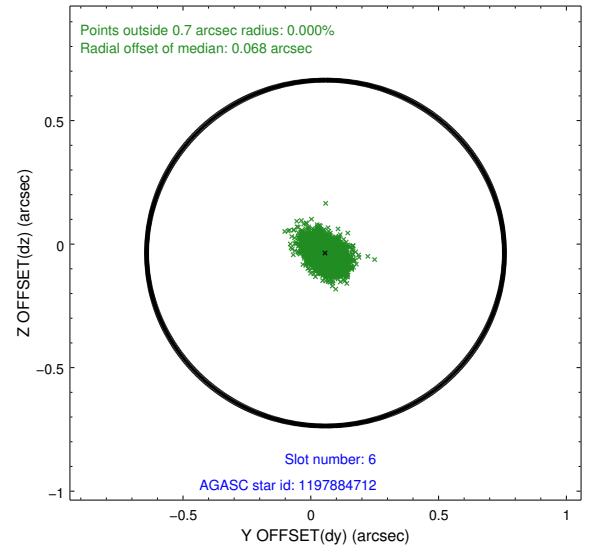
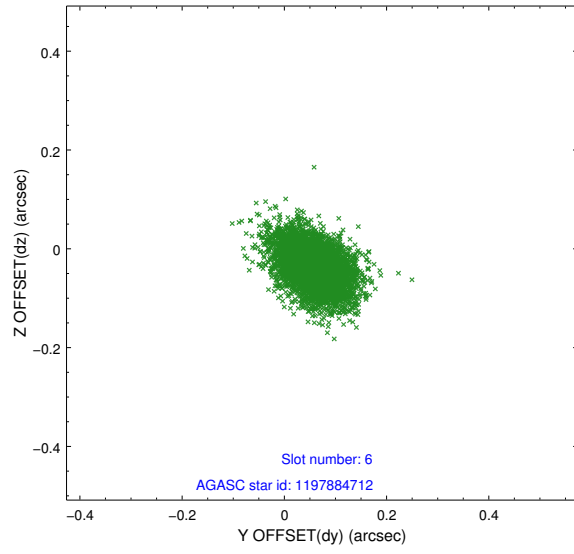
2.4.2 Slot 4



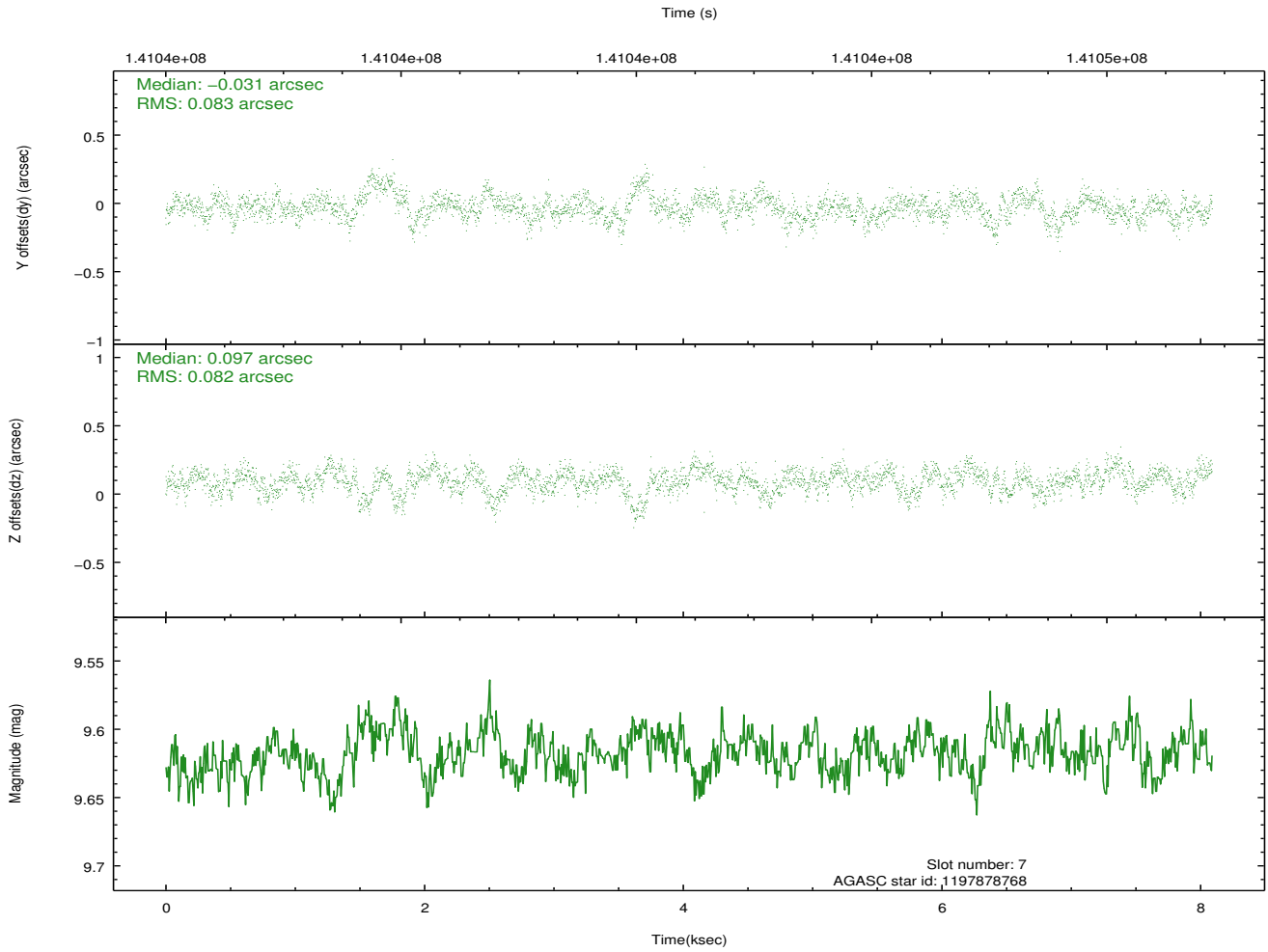
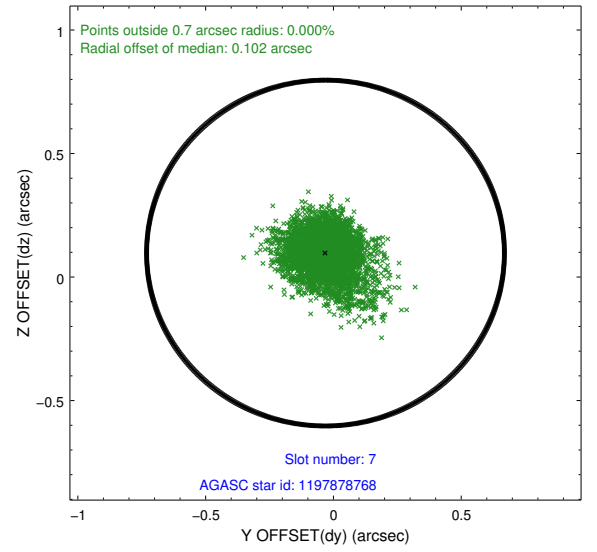
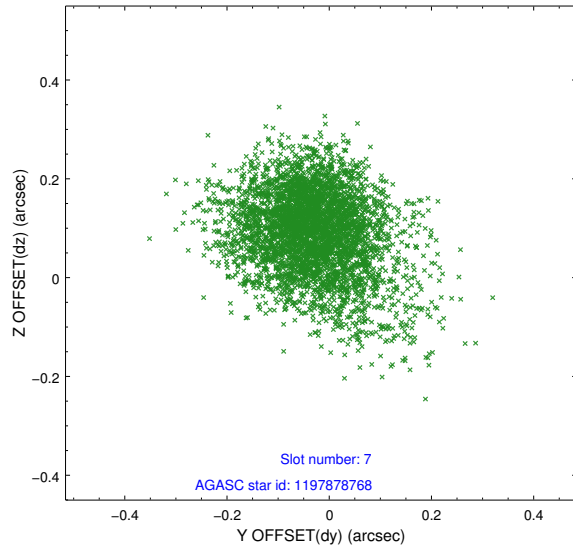
2.4.3 Slot 5



2.4.4 Slot 6

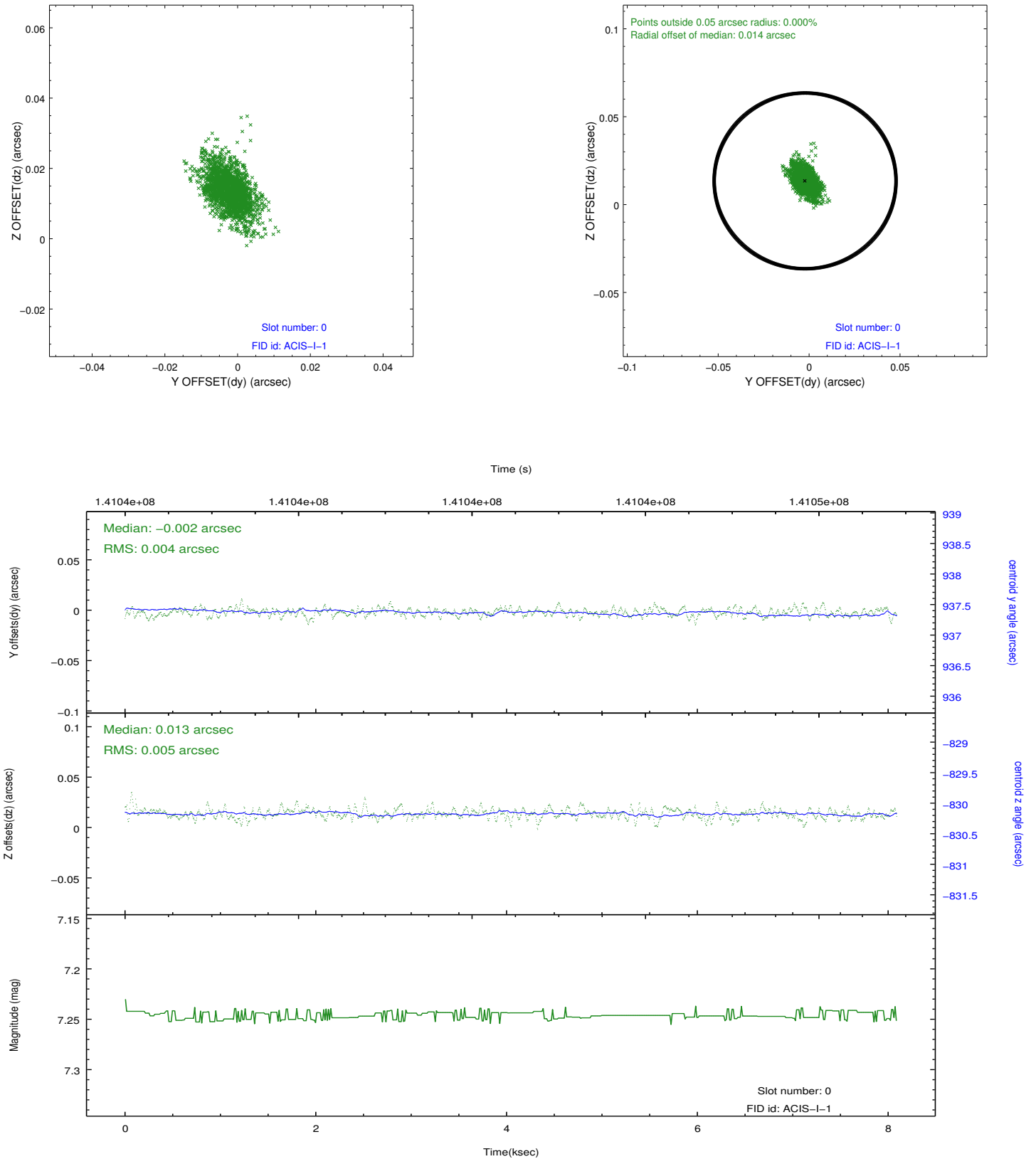


2.4.5 Slot 7

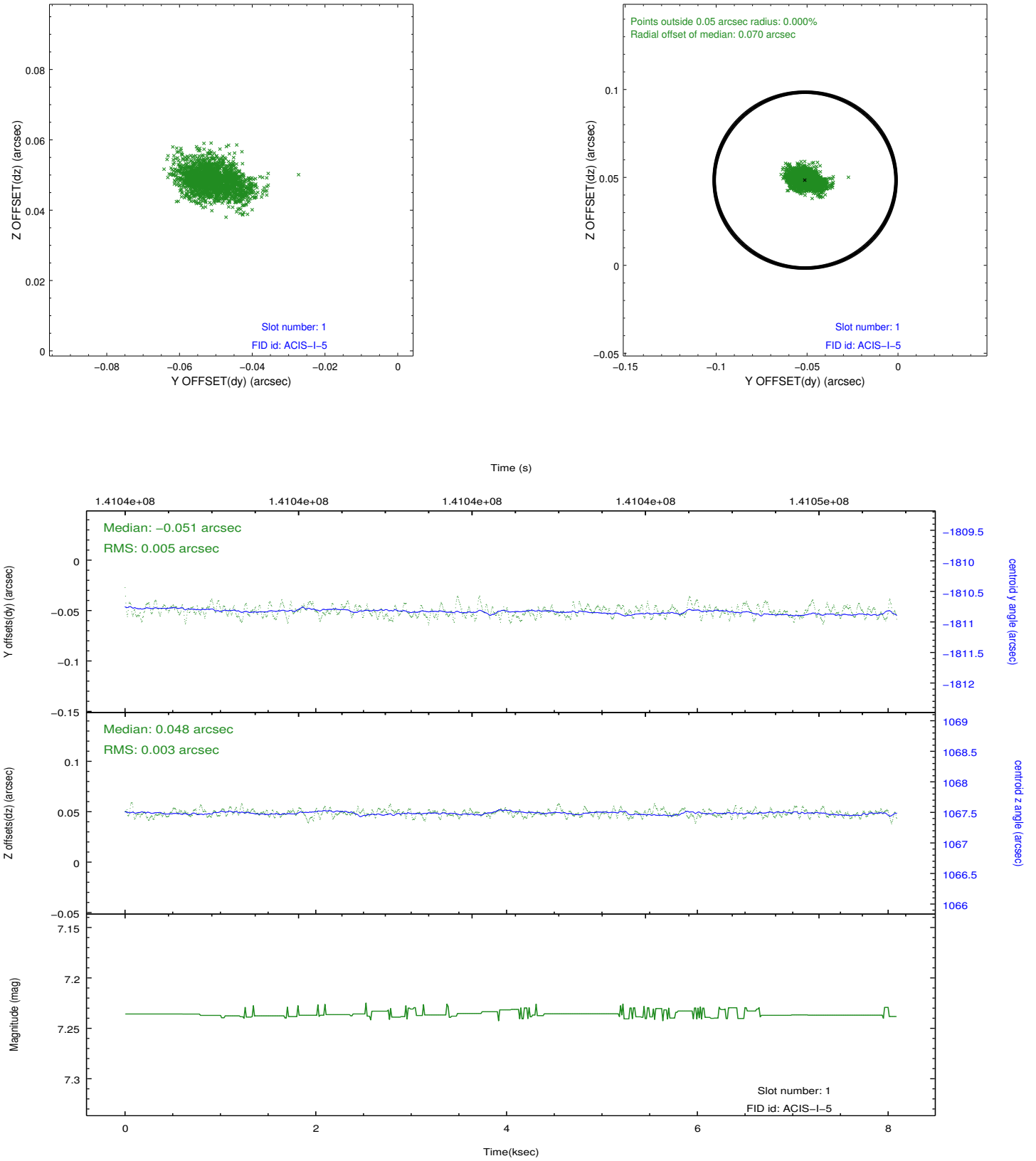


2.5 FID Slots

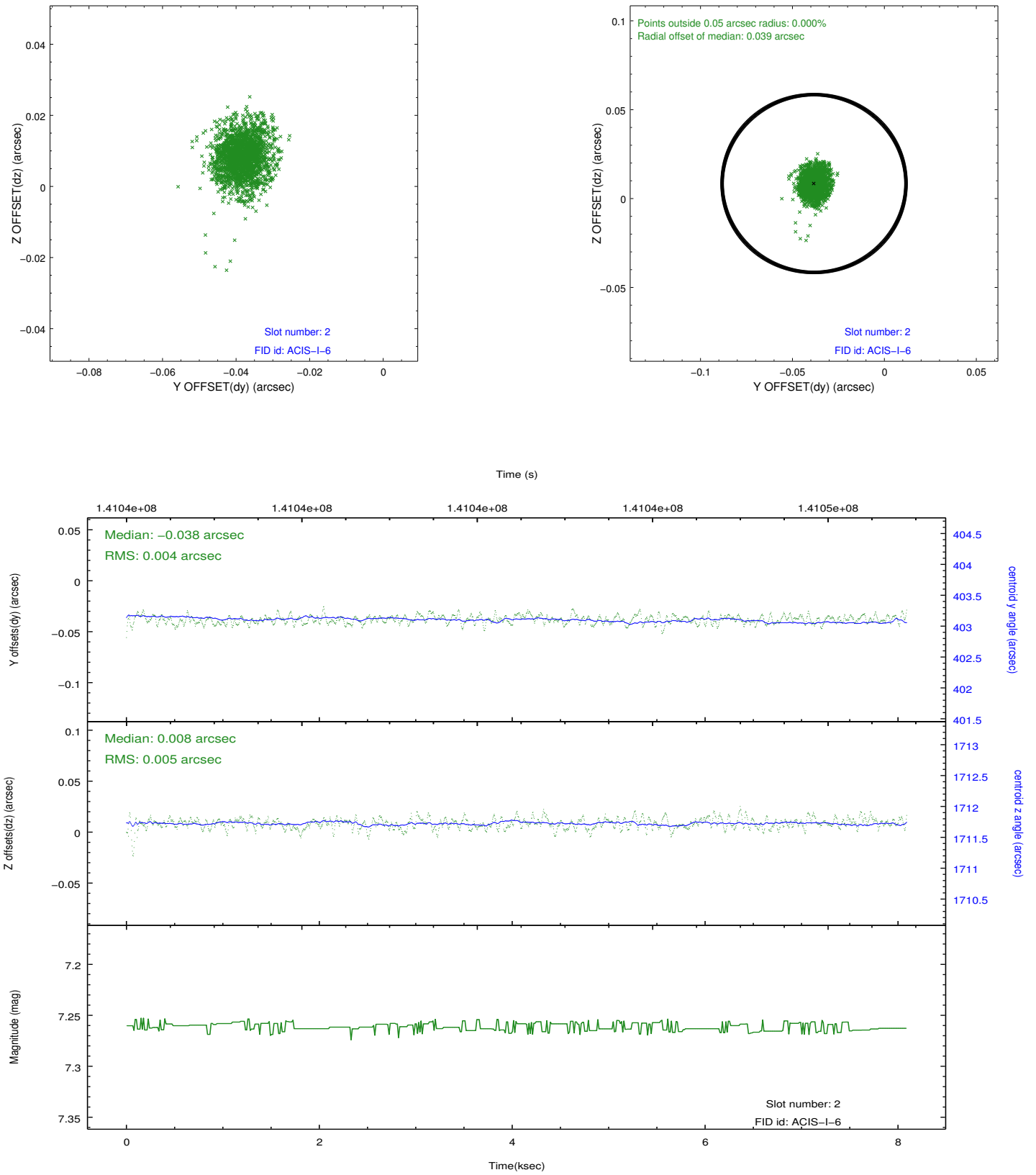
2.5.1 Slot 0



2.5.2 Slot 1



2.5.3 Slot 2



A Summary

A.1 Status

V&V Scientist	Jen Lauer
V&V Date (YYYY-MM-DD)	2012.10.18
V&V Edition	1
V&V Disposition and Status	OK
V&V Charge Time	7.657

A.2 Comments

Window constraint satisfied.