

V&V Reference Report

L2 ASCDS Version : 8.4.5

Observation 2790 - L2 Version 3
Chandra X-Ray Center

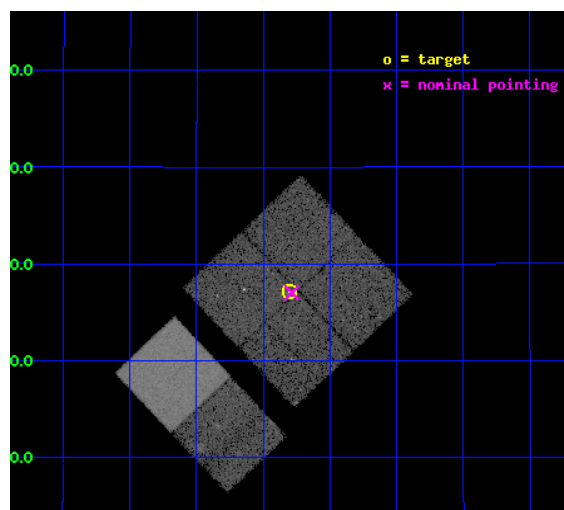
L2 Processing Date : Oct 8 2012

Contents

1	Front	2
2	OBI	3
2.1	OBI	3
2.1.1	Images	3
2.1.2	Bias	3
2.1.3	Parameters	4
2.1.4	Events	4
2.2	Compared Parameters	5
2.3	Aspect	6
2.4	Star Slots	9
2.4.1	Slot 3	9
2.4.2	Slot 4	10
2.4.3	Slot 5	11
2.4.4	Slot 6	12
2.4.5	Slot 7	13
2.5	FID Slots	14
2.5.1	Slot 0	14
2.5.2	Slot 1	15
2.5.3	Slot 2	16
A	Summary	17
A.1	Status	17
A.2	Comments	17

1 Front

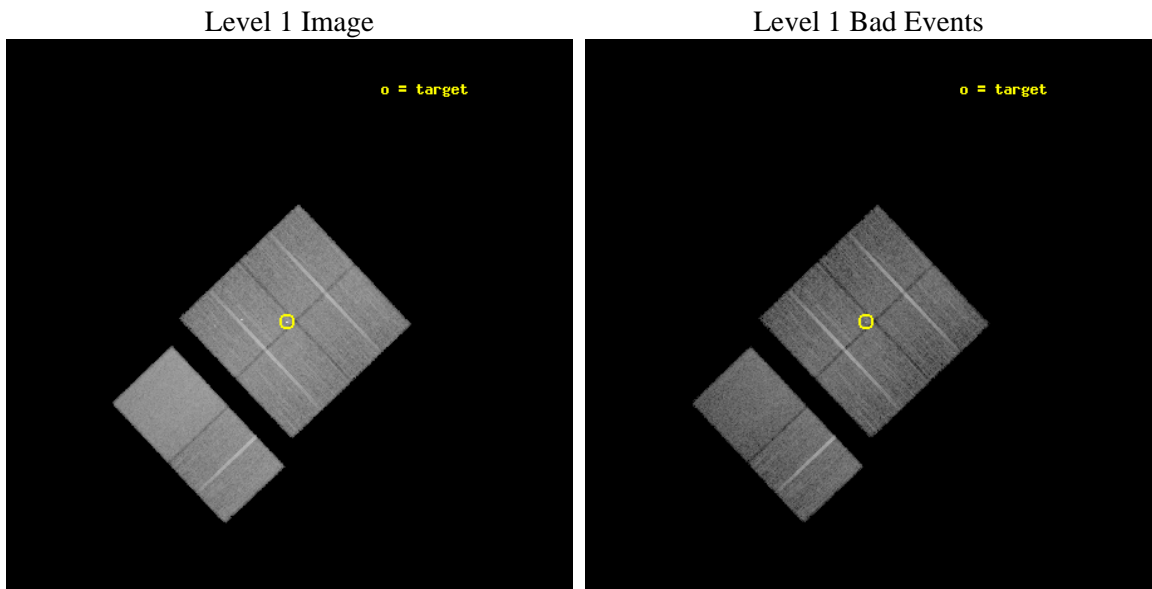
seq_num	500240	Sequence number
obs_id	2790	Observation id
title	ASTROMETRIC STUDY OF ISOLATED NEUTRON STARS	Proposal title
observer	Dr Christian Motch	Principal investigator
object	RX J1308+2127	Source name
dtcycle	0	
cycle	P	events from which exps? Prim/Second/Both
ra_targ	197.200833	Observer's specified target RA [deg]
dec_targ	21.452083	Observer's specified target Dec [deg]
ra_nom	197.19623732124	Nominal RA [deg]
dec_nom	21.450216580727	Nominal Dec [deg]
roll_nom	226.57269317794	Nominal Roll [deg]
revision	3	Processing version of data
ontime	19465.426117092	Sum of GTIs [s]
livetime	19218.943170925	Livetime [s]
ontime0	19462.062026858	Sum of GTIs [s]
ontime1	19465.344037086	Sum of GTIs [s]
ontime2	19462.144106835	Sum of GTIs [s]
ontime3	19465.426117092	Sum of GTIs [s]
ontime6	19465.508197099	Sum of GTIs [s]
ontime7	19465.467157096	Sum of GTIs [s]
l2events	125233	Number of level 2 events



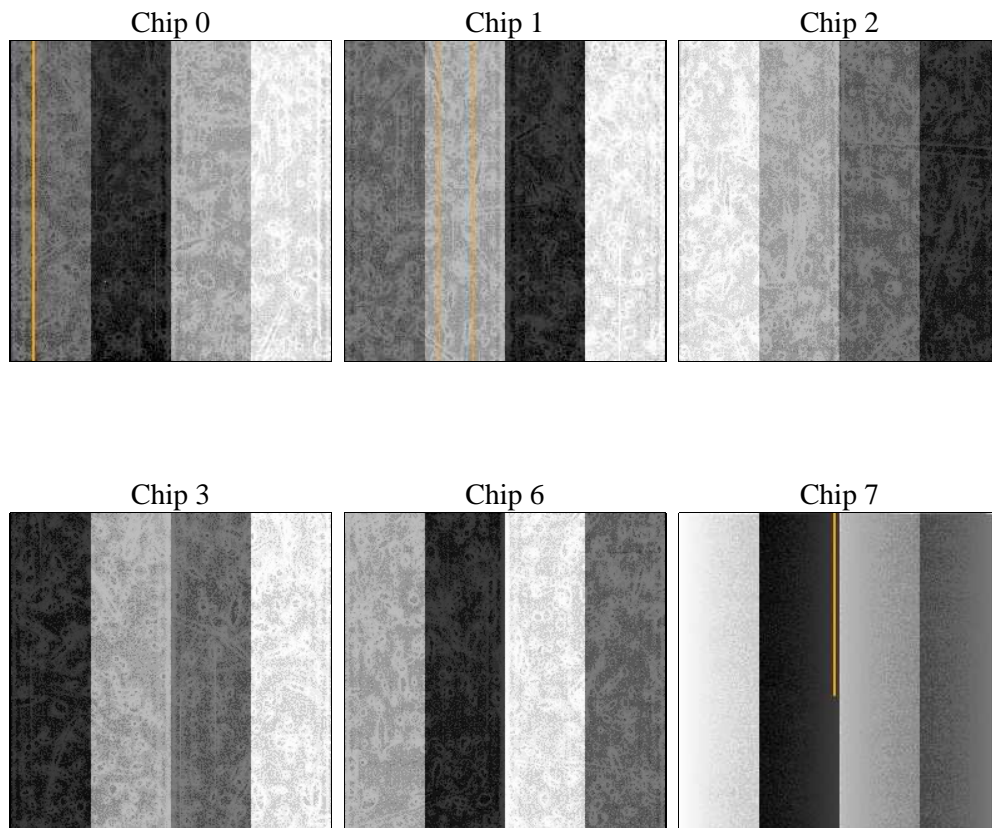
2 OBI

2.1 OBI

2.1.1 Images



2.1.2 Bias



2.1.3 Parameters

obi_num	0	Obi number	sched_exp_time	19500.000000	[s] Scheduled observation exposure time
ascdsver	8.4.5	Processing system revision	ontime	19465.426117092	Sum of GTIs [s]
caldsver	4.5.2	 	ontime0	19462.062026858	Sum of GTIs [s]
date	2012-10-08T05:57:38	Date and time of file creation	ontime1	19465.344037086	Sum of GTIs [s]
revision	3	Processing version of data	ontime2	19462.144106835	Sum of GTIs [s]
			ontime3	19465.426117092	Sum of GTIs [s]
			ontime6	19465.508197099	Sum of GTIs [s]
			ontime7	19465.467157096	Sum of GTIs [s]
			l1events	720067	Number of level 1 events

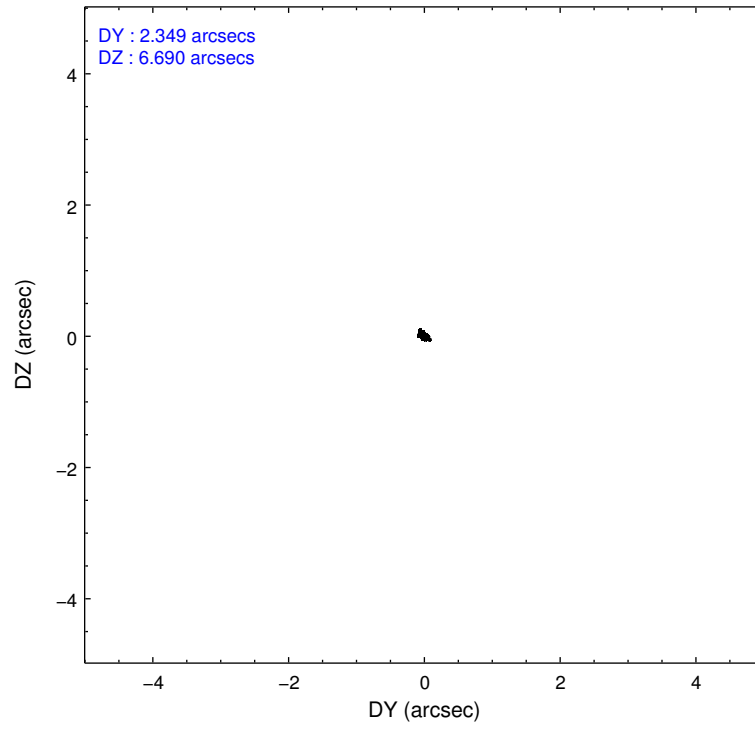
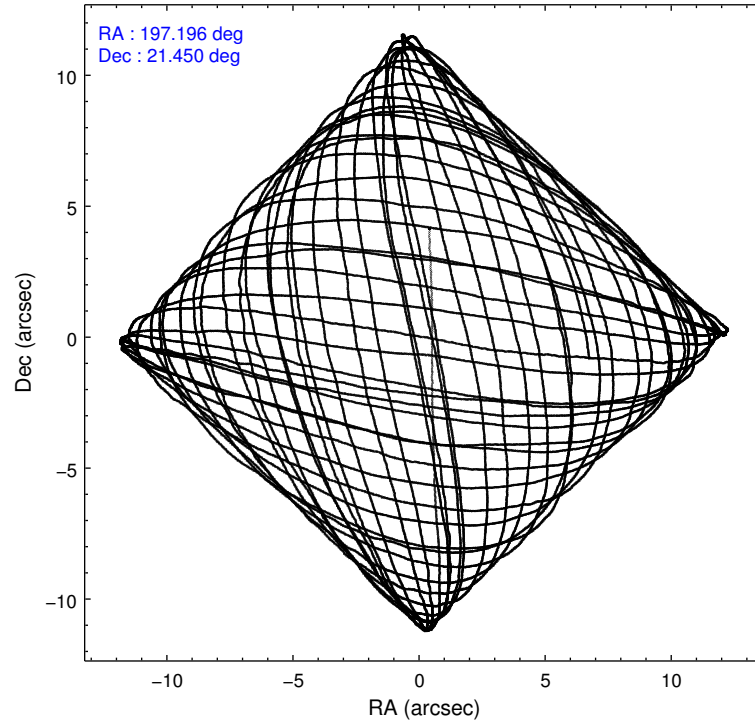
2.1.4 Events

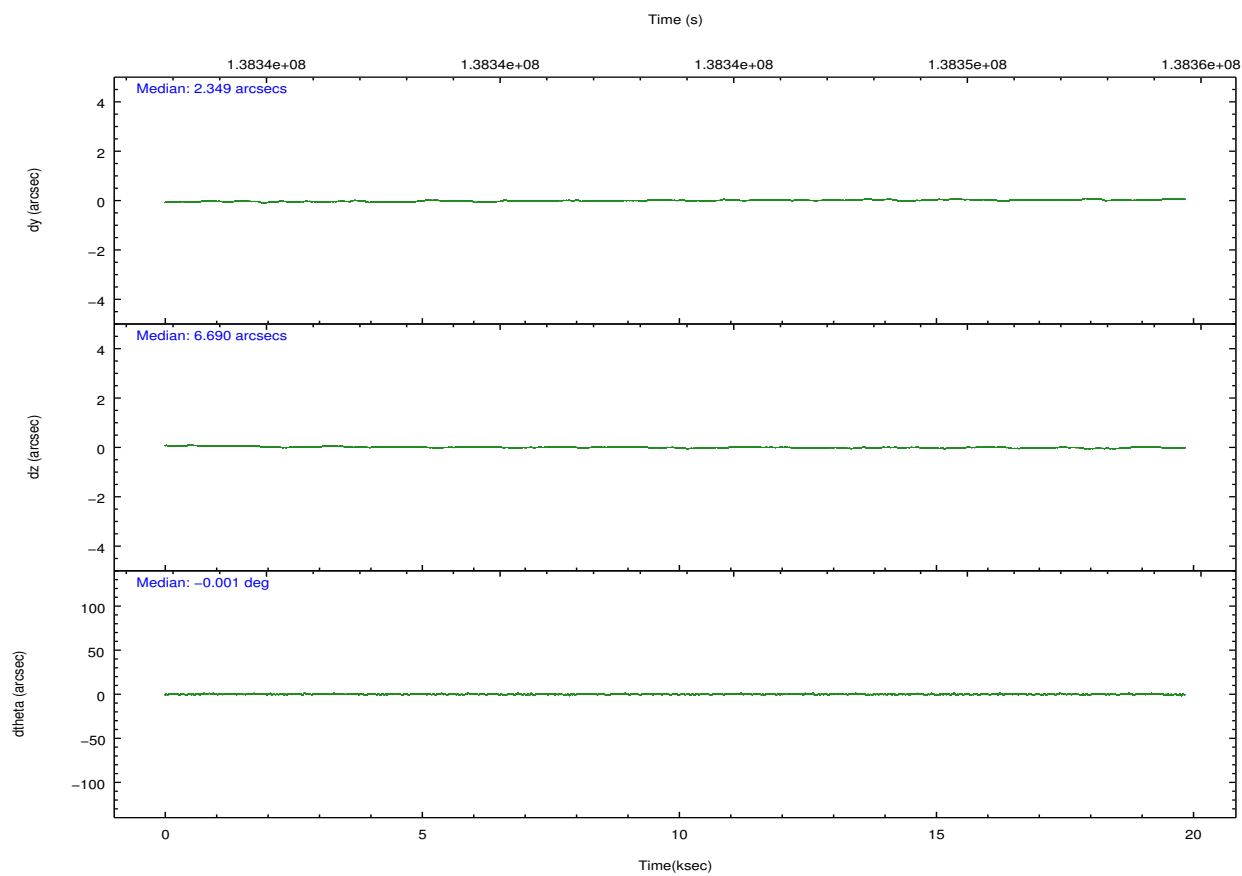
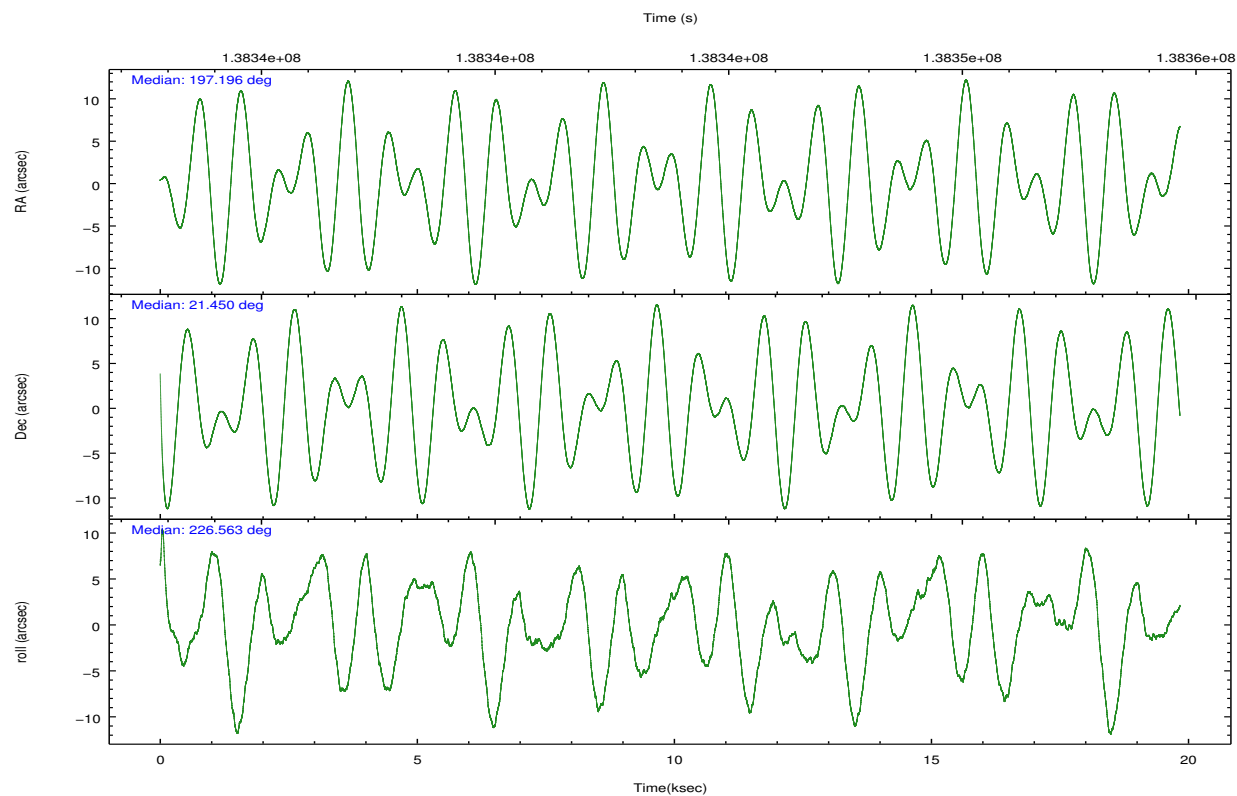
	ccd 0	ccd 1	ccd 2	ccd 3	ccd 6	ccd 7		ccd 0	ccd 1	ccd 2	ccd 3	ccd 6	ccd 7
level 1 events	107867	105651	115577	119262	117894	153816	grade 0 events	5752	5704	5715	8730	5632	6045
rejected events	94099	91150	102037	102149	103907	90173		5%	5%	4%	7%	4%	3%
rejected %	87%	86%	88%	85%	88%	58%	grade 1 events	65	55	49	197	57	136
								0%	0%	0%	0%	0%	0%
							grade 2 events	3015	3074	2999	3016	2877	12640
								2%	2%	2%	2%	2%	8%
							grade 3 events	1342	1469	1243	1383	1367	5648
								1%	1%	1%	1%	1%	3%
							grade 4 events	1333	1409	1238	1449	1315	5649
								1%	1%	1%	1%	1%	3%
							grade 5 events	4352	4714	4223	4967	5189	14746
								4%	4%	3%	4%	4%	9%
							grade 6 events	2330	2847	2350	2539	2798	33664
								2%	2%	2%	2%	2%	21%
							grade 7 events	89678	86379	97760	96981	98659	75288
								83%	81%	84%	81%	83%	48%

2.2 Compared Parameters

Parameter	Planned	Actual	Parameter	Planned	Actual
Instrument	ACIS	ACIS	Obspar format version number	7	7
Detector	ACIS-012367	ACIS-012367	Obspar file type	PREDICTED	ACTUAL
Grating	NONE	NONE	Obspar update status	NONE	UPDATED
Data mode	FAINT	FAINT	Number of optional ACIS chips dropped	0	0
Observation mode	POINTING	POINTING	On-chip summing requested	N	N
[deg] Pointing RA	197.202980	197.1962373212412	Subarray requested	NONE	NONE
[deg] Pointing Dec	21.476883	21.45021658072739	Alternating exposures requested	N	N
[deg] Pointing Roll	226.361545	226.5726931779429	[s] Primary exposure time	0.000000	3.2
[mm] SIM focus pos	-0.782348	-0.7809083437167272			
[mm] SIM defocus	0	0.001439871863259334			
[mm] SIM translation stage pos	-233.592463	-233.5874344608287			
[mm] SIM translation stage offset	0	-0.005018542100998502			
[s] Observation start time (MET)	138334156.184000	138333118.37689			
Observation start date	2002-05-21T02:08:12	2002-05-21T01:51:58			
[s] Observation end time (MET)	138353656.184000	138354380.46526			
Observation end date	2002-05-21T07:33:12	2002-05-21T07:46:20			
Read mode	TIMED	TIMED			

2.3 Aspect



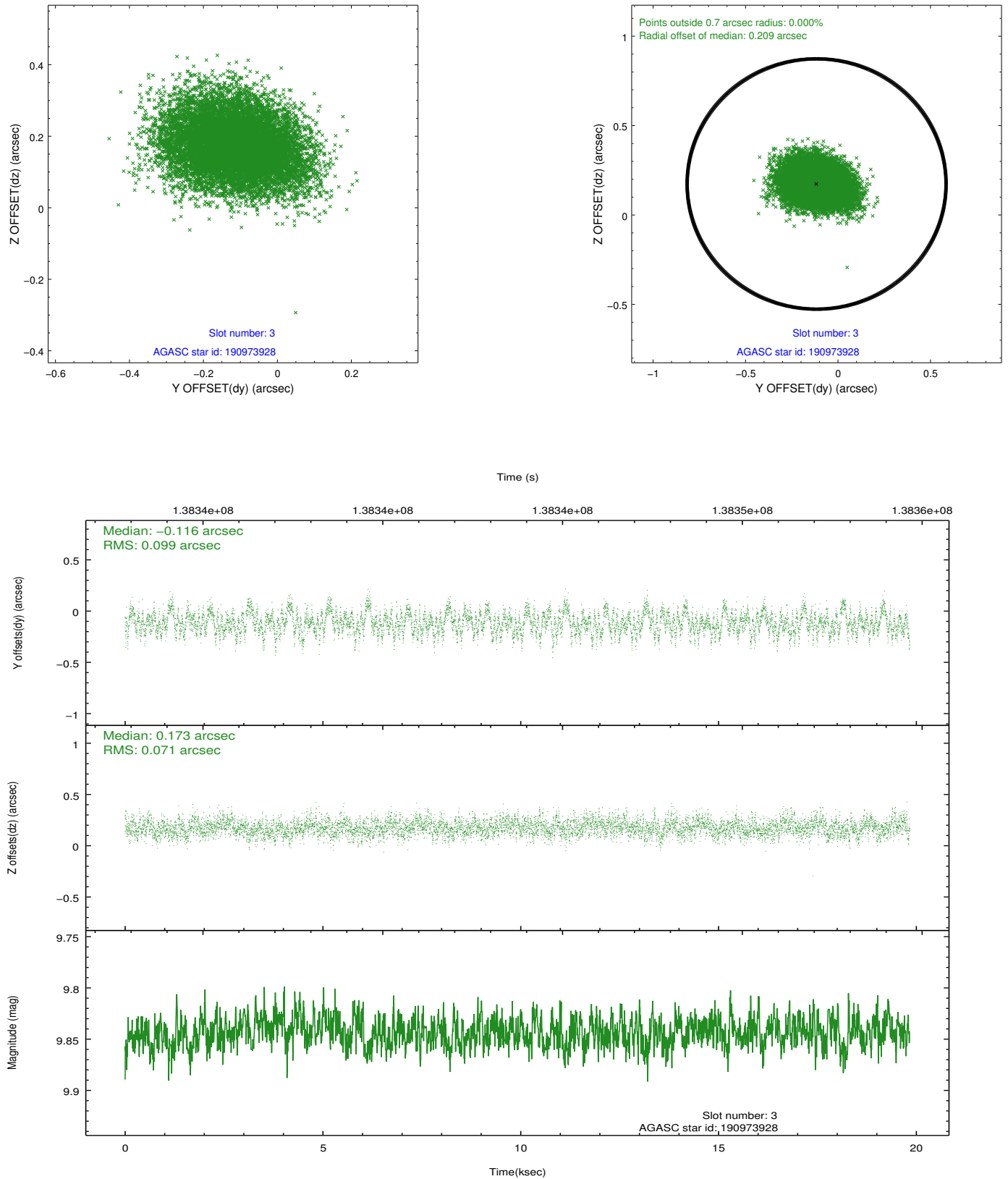


Slot Statistics

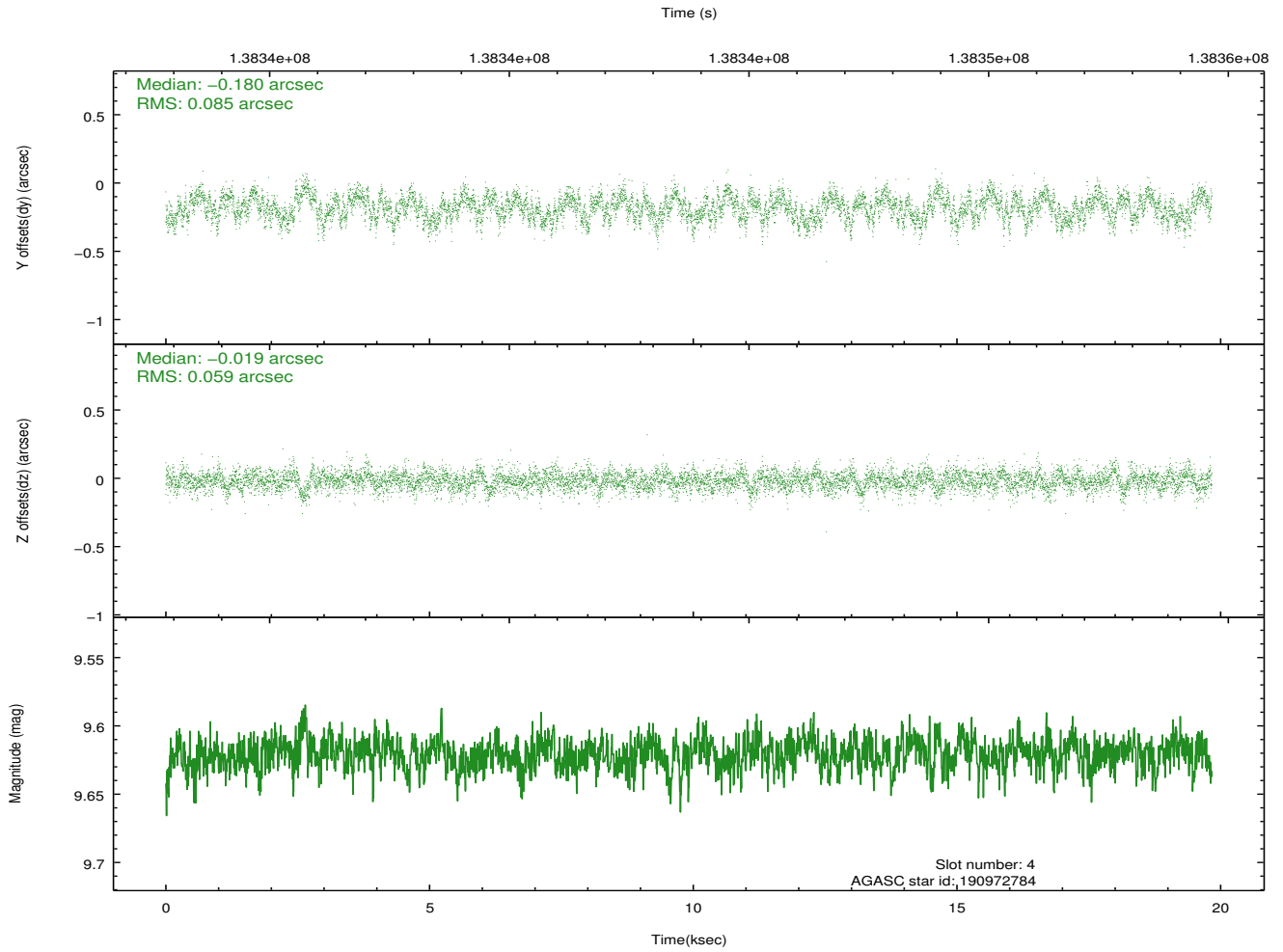
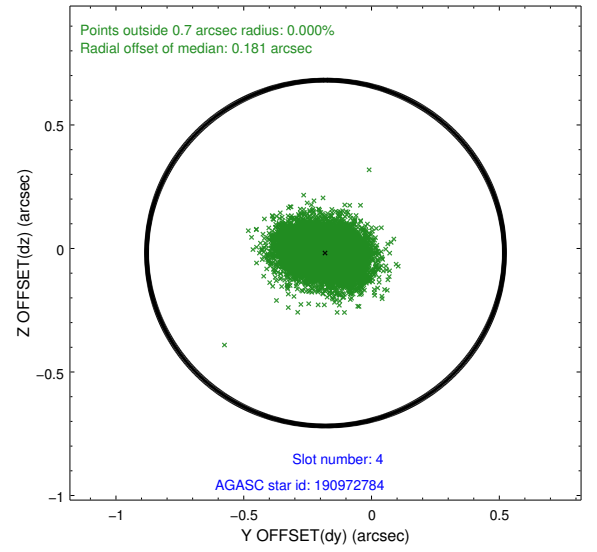
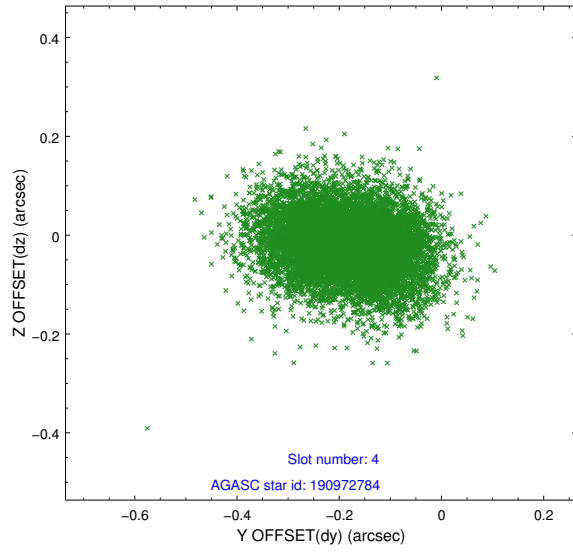
slot	status	id	mag	n_pts	med_dy	med_dz	dr1	dr2	ra	dec	mean_y	mean_z
0	FID	ACIS-I-1	7.24	4836	-0.005	0.013	0.006	0.012	0.000000	0.000000	937.44	-830.08
1	FID	ACIS-I-5	7.24	4834	-0.048	0.047	0.006	0.011	0.000000	0.000000	-1810.56	1067.40
2	FID	ACIS-I-6	7.26	4835	-0.039	0.011	0.007	0.012	0.000000	0.000000	402.80	1712.04
3	GUIDE	190973928	9.84	9668	-0.116	0.173	0.130	0.208	197.904188	21.564389	-1852.30	1478.57
4	GUIDE	190972784	9.62	9672	-0.180	-0.019	0.111	0.178	197.351360	22.226147	-2293.79	-1503.04
5	GUIDE	190847304	10.17	9542	0.091	-0.075	0.145	0.248	196.395854	21.619494	1487.69	-2313.22
6	GUIDE	190847464	8.84	9673	0.209	-0.104	0.098	0.164	196.264668	21.493955	2118.52	-2322.83
7	GUIDE	190841696	8.40	9670	-0.006	0.024	0.064	0.103	197.285441	21.456102	-136.45	252.13

2.4 Star Slots

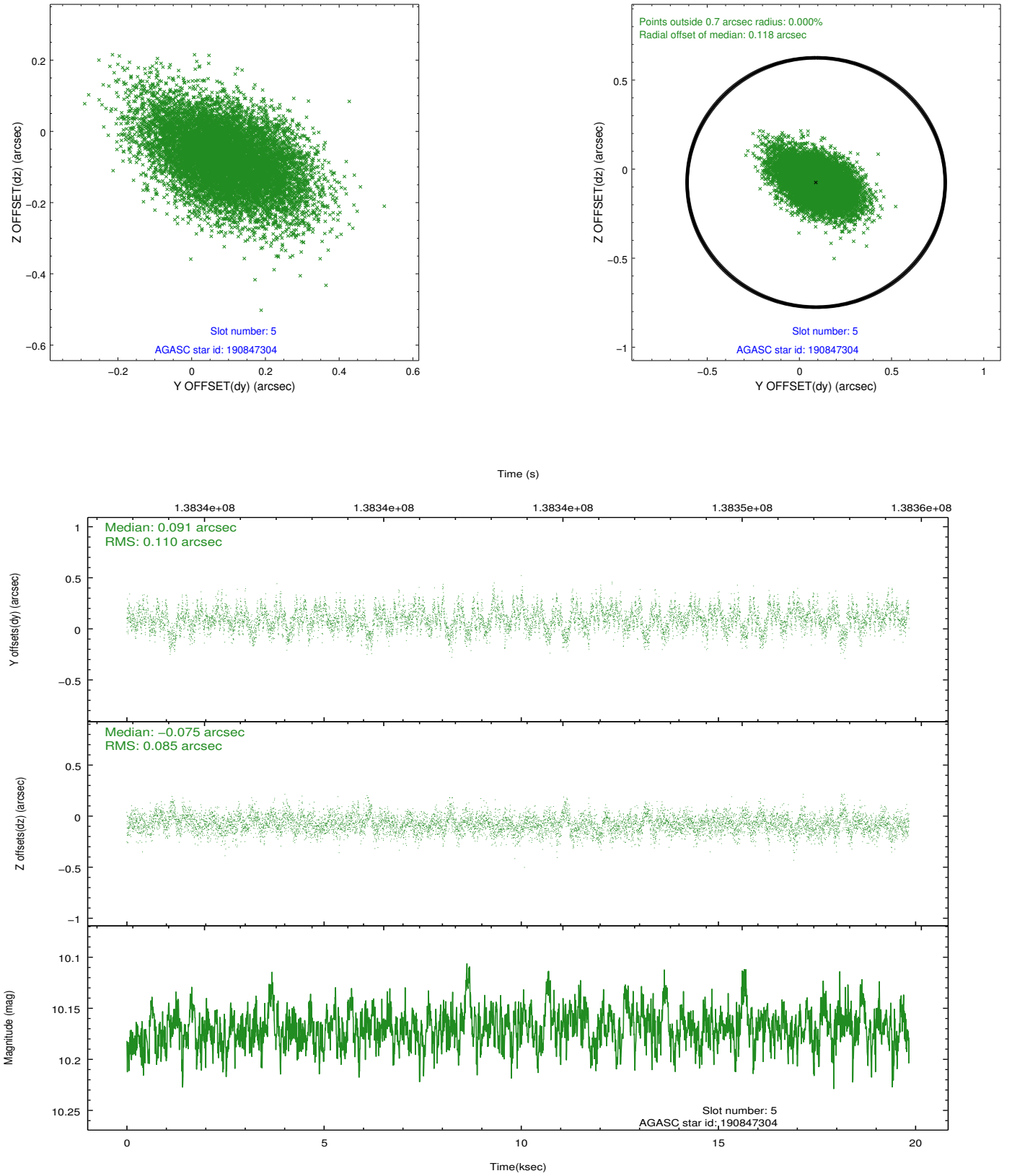
2.4.1 Slot 3



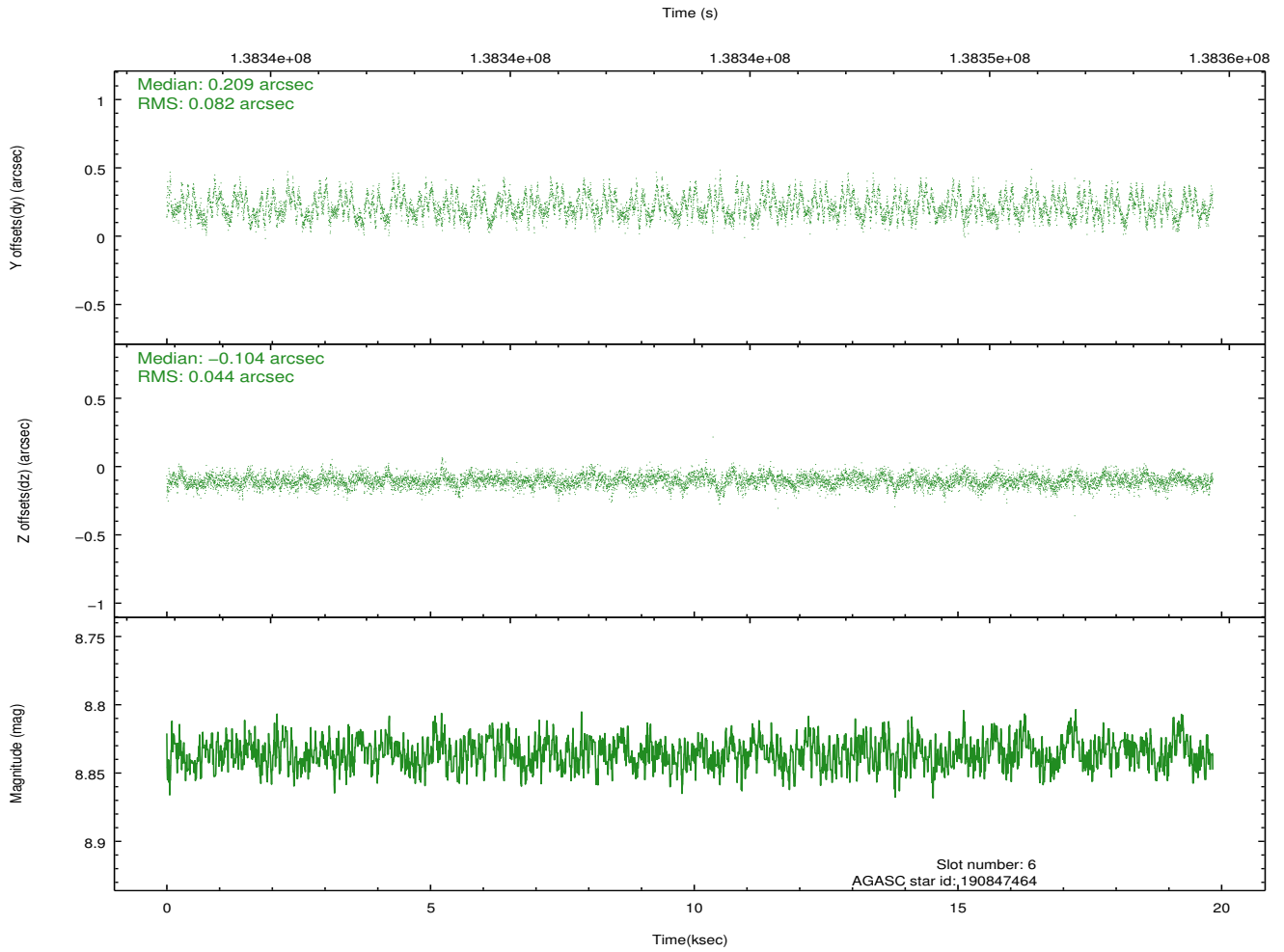
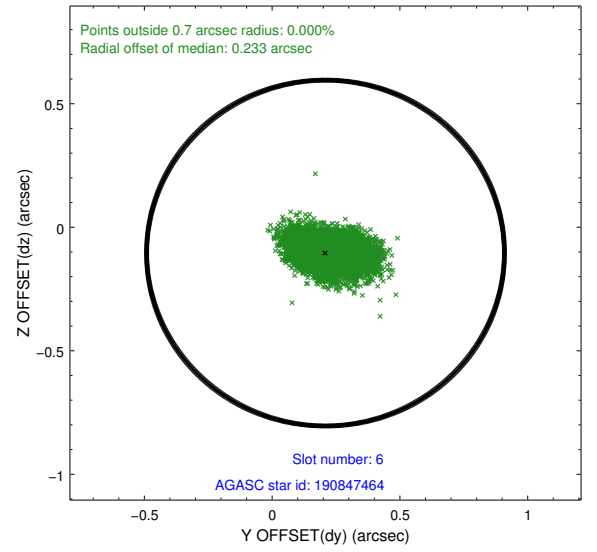
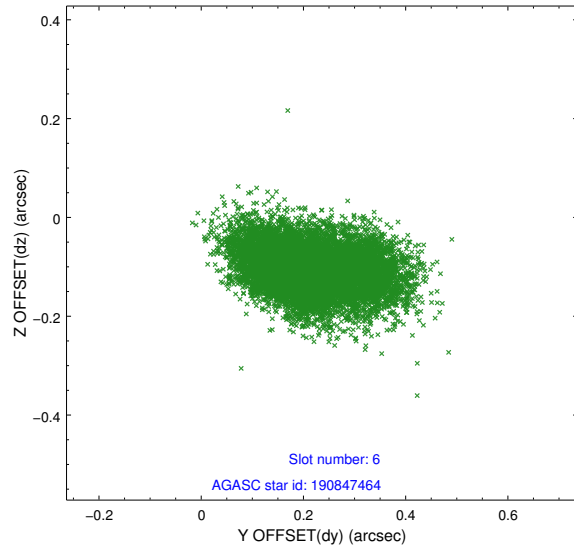
2.4.2 Slot 4



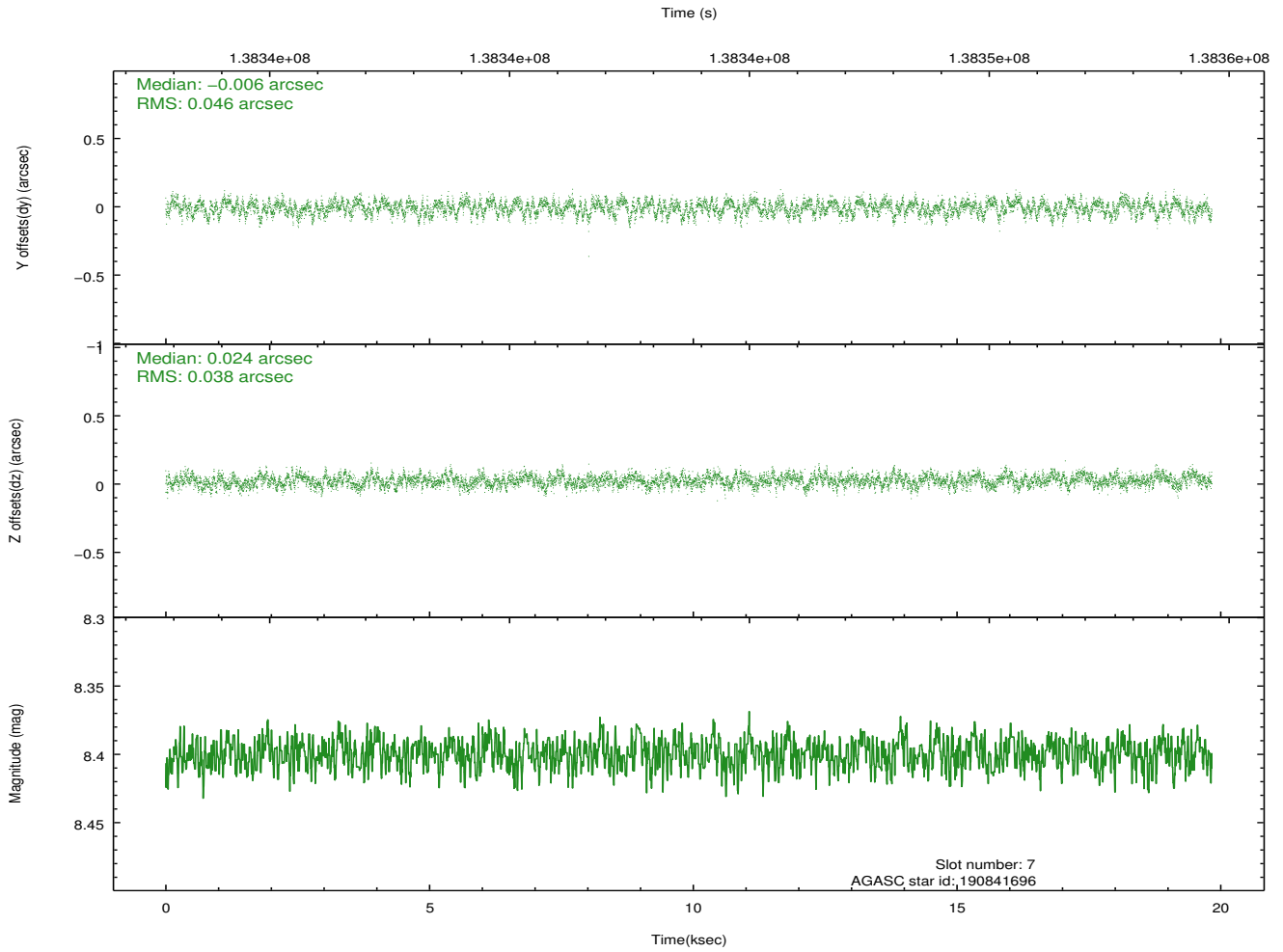
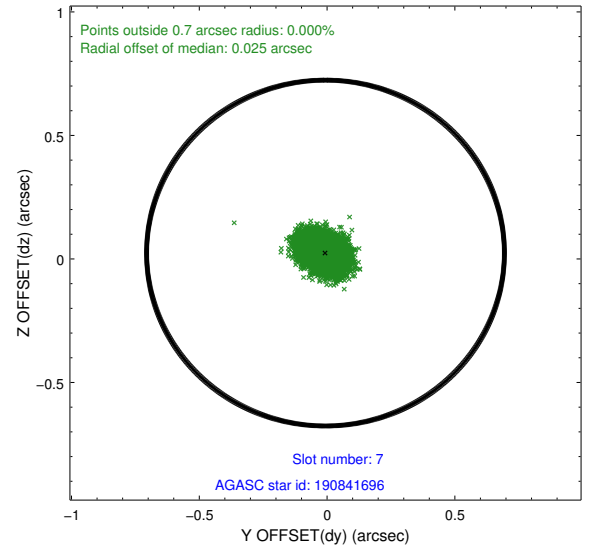
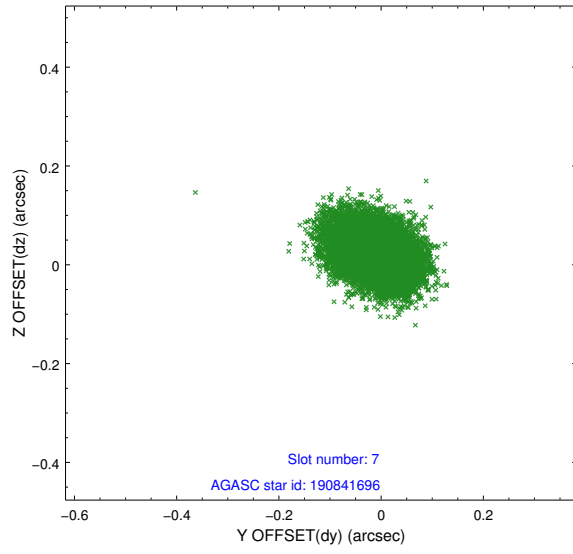
2.4.3 Slot 5



2.4.4 Slot 6

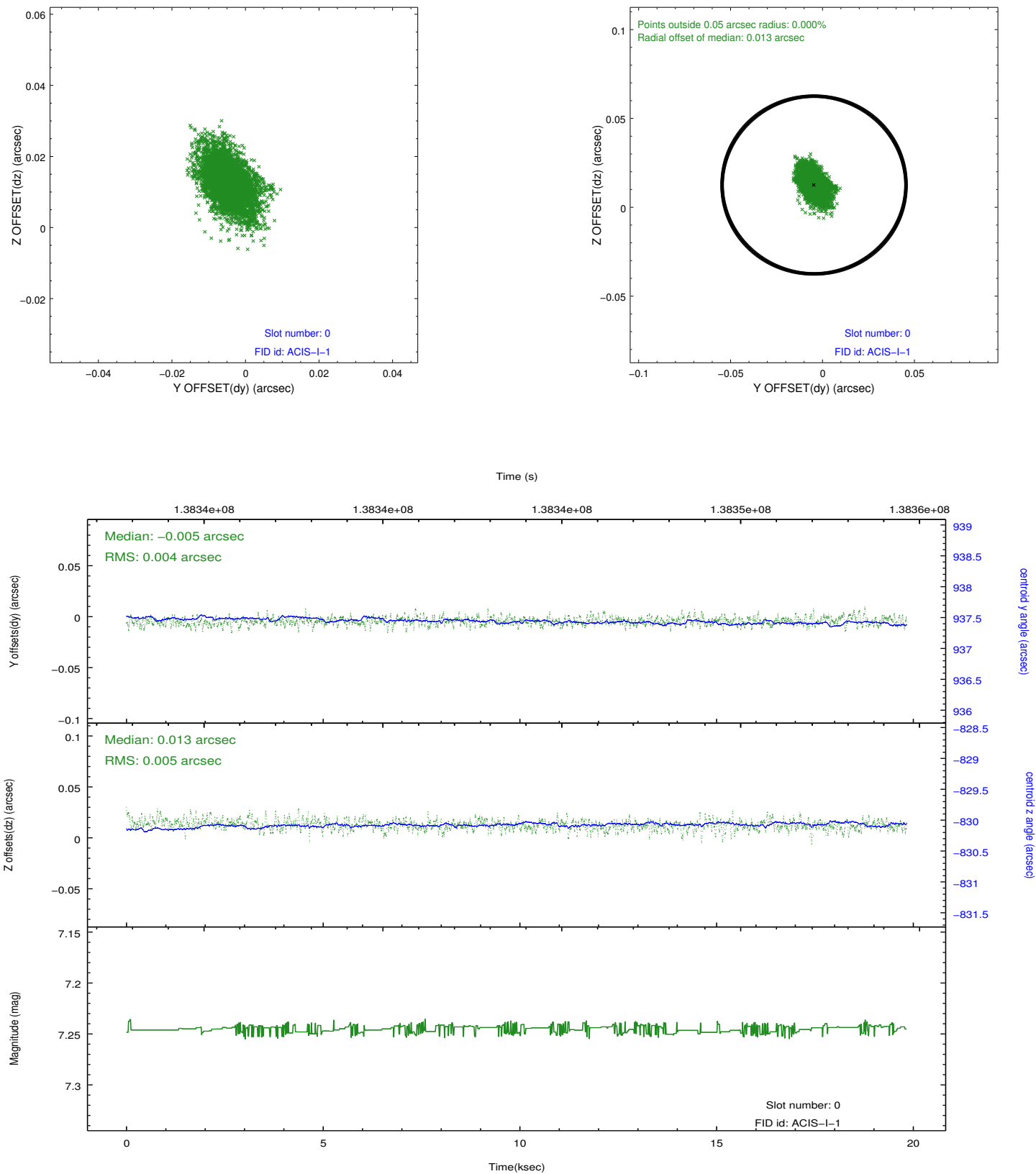


2.4.5 Slot 7

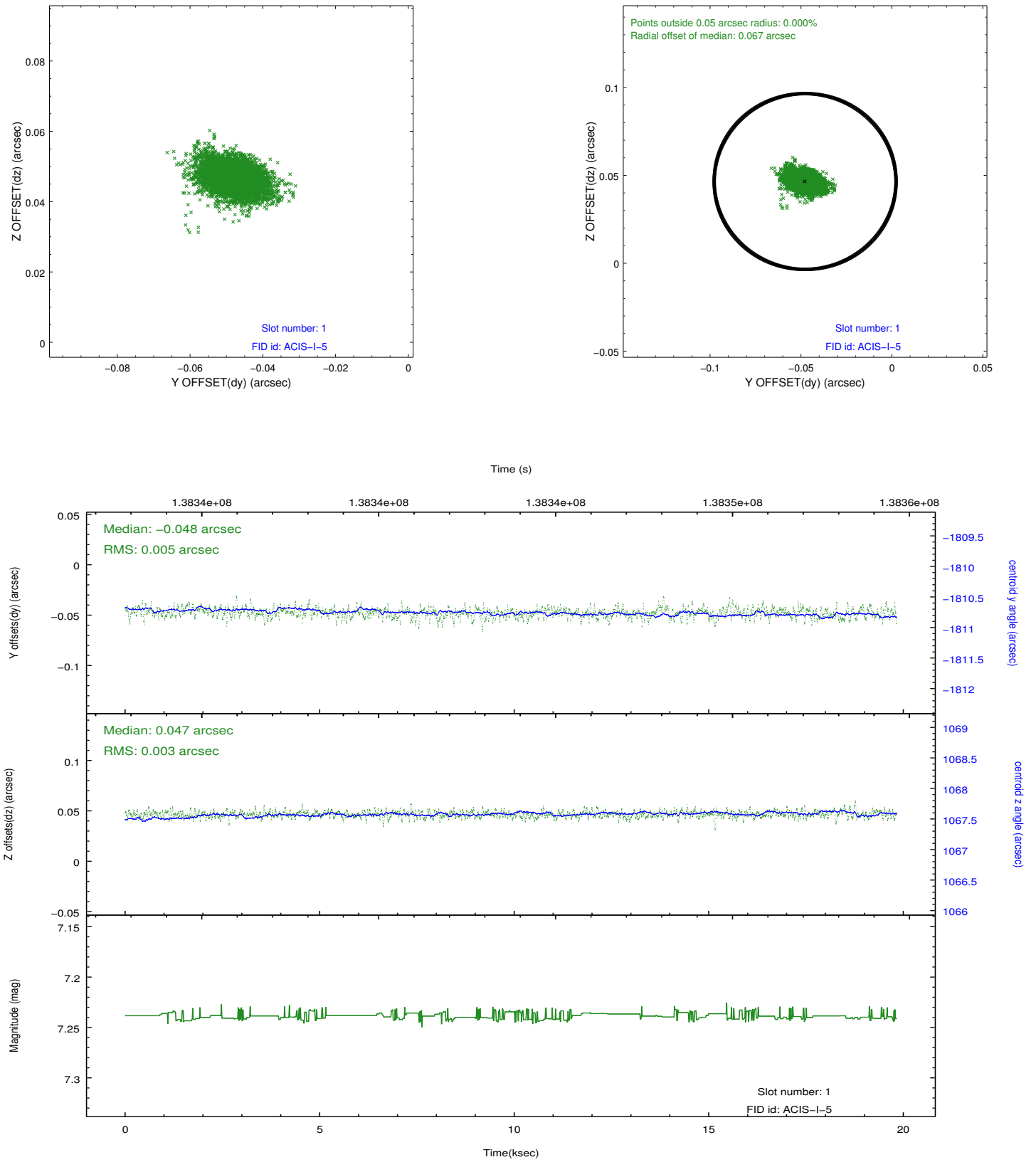


2.5 FID Slots

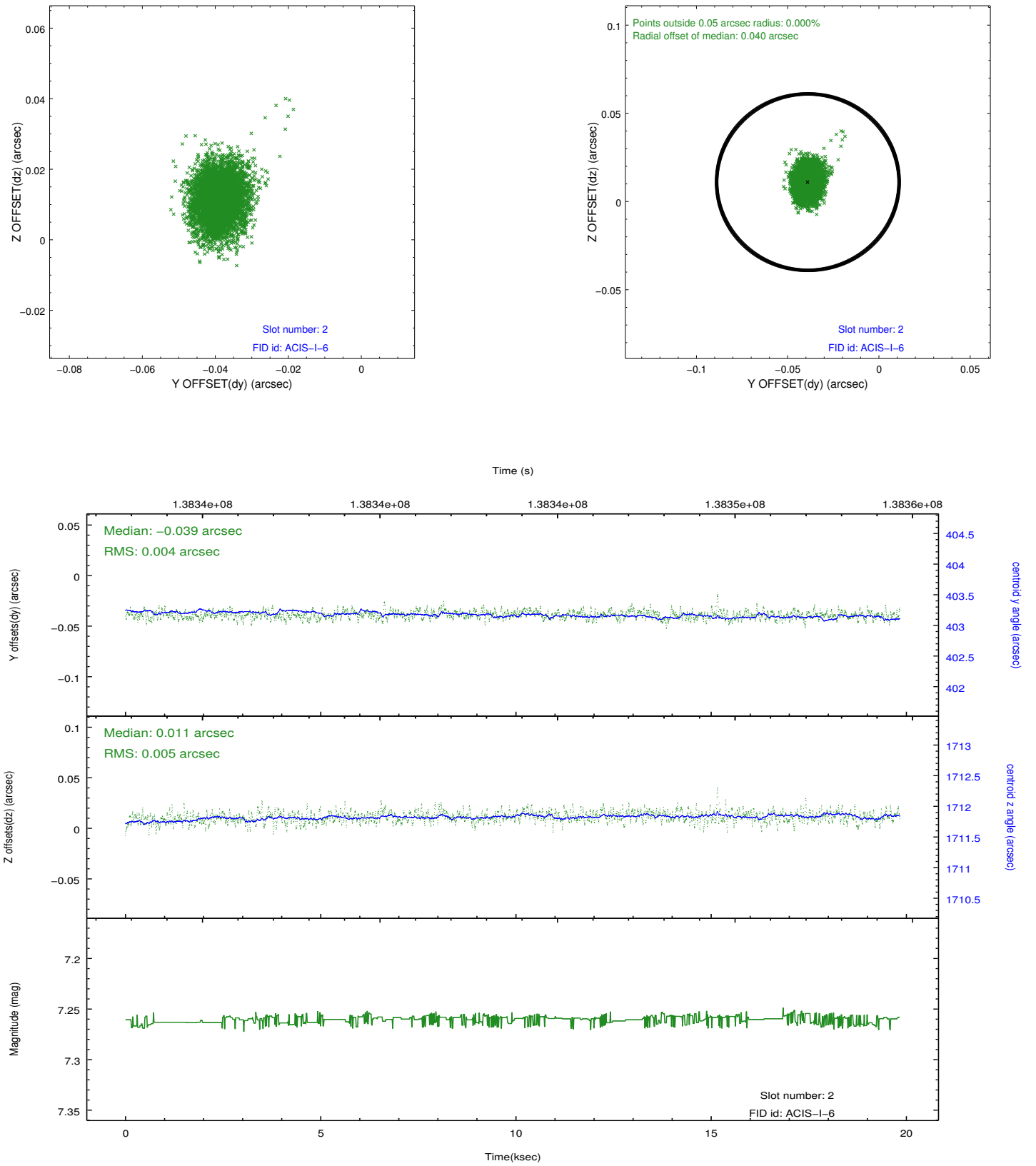
2.5.1 Slot 0



2.5.2 Slot 1



2.5.3 Slot 2



A Summary

A.1 Status

V&V Scientist	Beth Sundheim
V&V Date (YYYY-MM-DD)	2012.10.18
V&V Edition	1
V&V Disposition and Status	OK
V&V Charge Time	19.459

A.2 Comments