

# V&V Reference Report

## L2 ASCDS Version : 7.6.9

Observation 2390 - L2 Version 001  
Chandra X-Ray Center

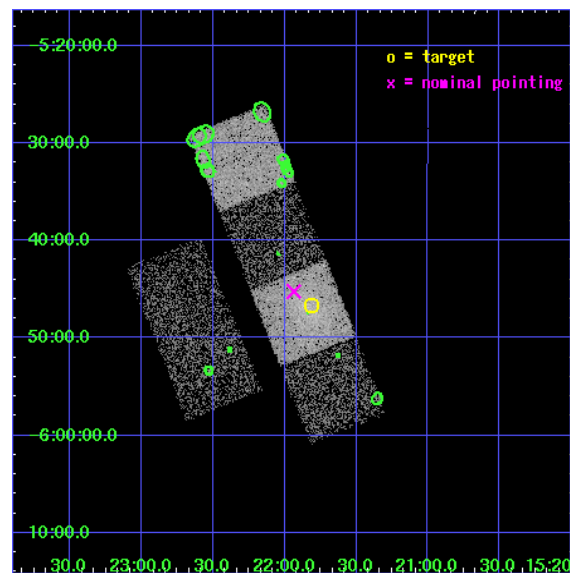
L2 Processing Date : Nov 2 2006

## Contents

<b>1</b>	<b>Front</b>	<b>2</b>
<b>2</b>	<b>OBI</b>	<b>3</b>
2.1	OBI . . . . .	3
2.1.1	Images . . . . .	3
2.1.2	Bias . . . . .	3
2.1.3	Parameters . . . . .	4
2.1.4	Events . . . . .	4
2.2	Compared Parameters . . . . .	5
2.3	Aspect . . . . .	6
2.4	Star Slots . . . . .	9
2.4.1	Slot 3 . . . . .	9
2.4.2	Slot 4 . . . . .	10
2.4.3	Slot 5 . . . . .	11
2.4.4	Slot 6 . . . . .	12
2.4.5	Slot 7 . . . . .	13
2.5	FID Slots . . . . .	14
2.5.1	Slot 0 . . . . .	14
2.5.2	Slot 1 . . . . .	15
2.5.3	Slot 2 . . . . .	16
<b>3</b>	<b>Point Sources</b>	<b>17</b>
<b>A</b>	<b>Summary</b>	<b>18</b>
A.1	Status . . . . .	18
A.2	Comments . . . . .	18

# 1 Front

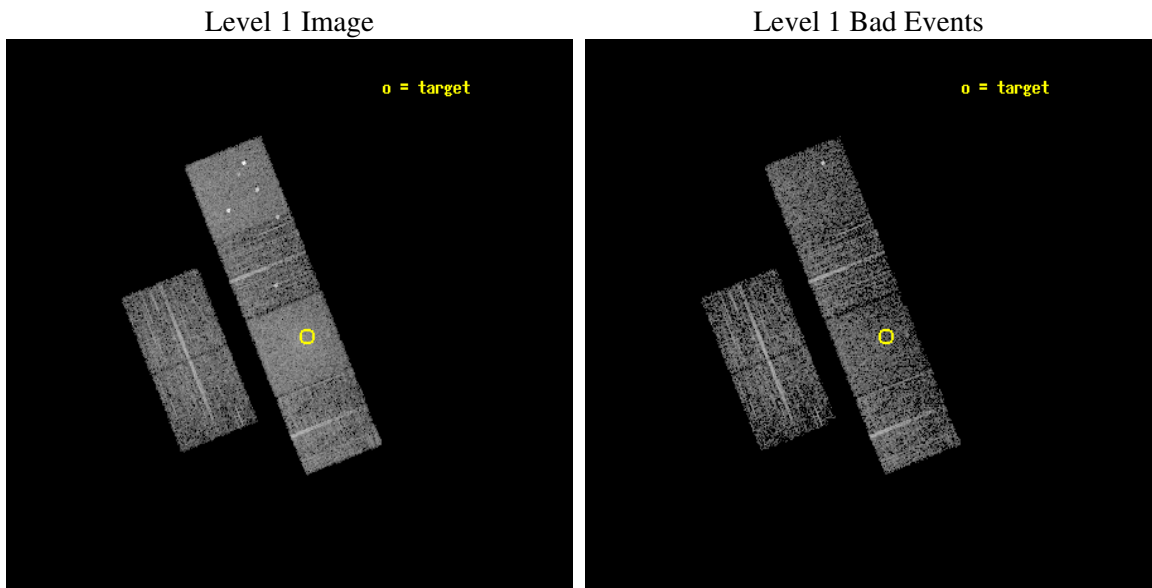
seq_num	100021
obs_id	2390
title	X-RAY SPECTROSCOPY OF COMET C/1999 T1
observer	Dr. Vladimir Krasnopolsky
object	C/1999 T1
dtcycle	0
cycle	P
ra_targ	230.45404
dec_targ	-5.7787
ra_nom	230.48403133283
dec_nom	-5.7538538158269
roll_nom	68.188612111929
revision	2
ontime	3635.2000033855
livetime	3589.168912088
ontime2	3635.2000033855
ontime3	3635.2000033855
ontime5	3635.2000033855
ontime6	3635.2000033855
ontime7	3635.2000033855
ontime8	3635.2000033855
l2events	38019



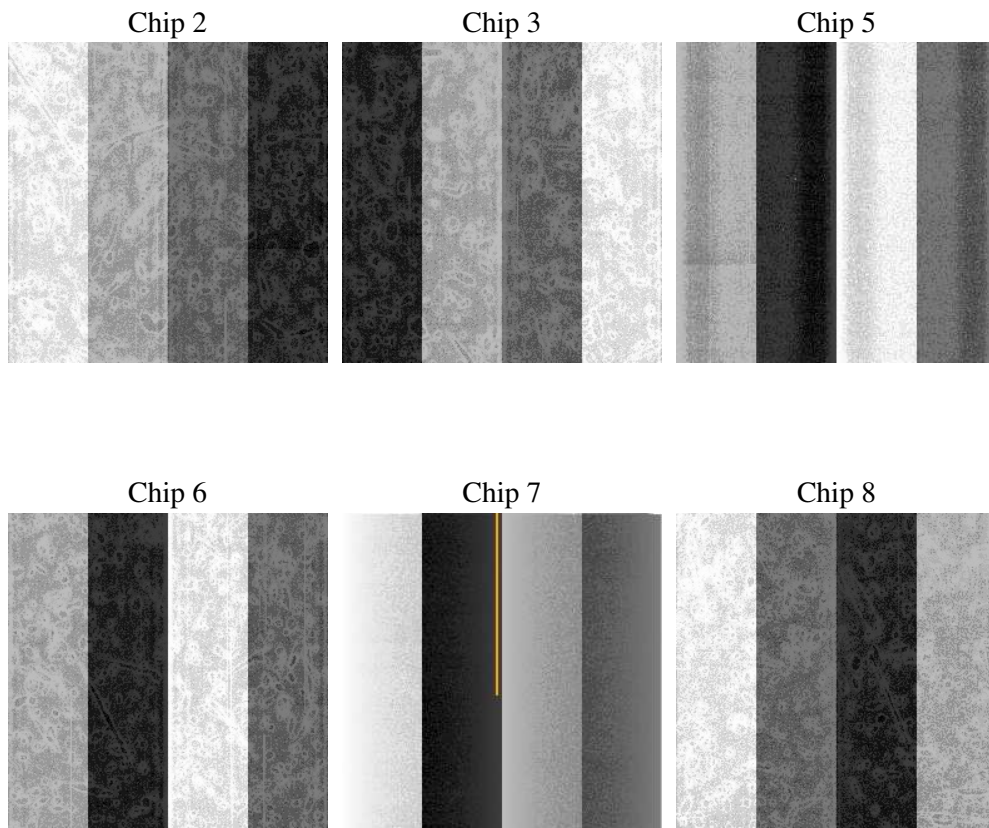
## 2 OBI

### 2.1 OBI

#### 2.1.1 Images



#### 2.1.2 Bias



### 2.1.3 Parameters

obi_num	0
ascdsver	7.6.9
caldbver	3.2.3
date	2006-11-02T17:42:49
revision	2

sched_exp_time	3521.744000
ontime	3639.6407897323
ontime2	3639.6407897323
ontime3	3639.6407897323
ontime5	3639.6407897323
ontime6	3639.6407897323
ontime7	3639.6407897323
ontime8	3639.6407897323
l1events	160168

### 2.1.4 Events

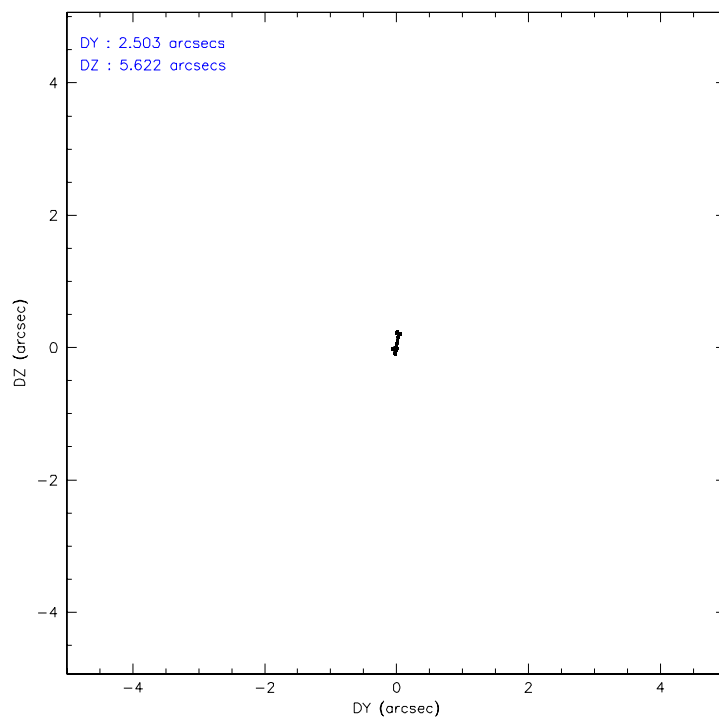
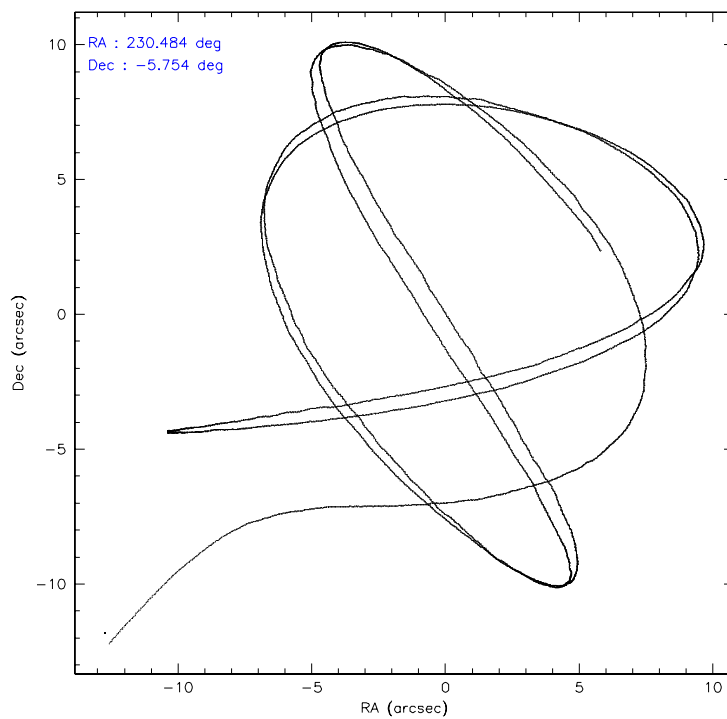
	ccd 2	ccd 3	ccd 5	ccd 6	ccd 7	ccd 8
level 1 events	22737	20795	33726	22869	32941	27100
rejected events	20277	18255	17565	19796	17231	21590
rejected %	89%	87%	52%	86%	52%	79%

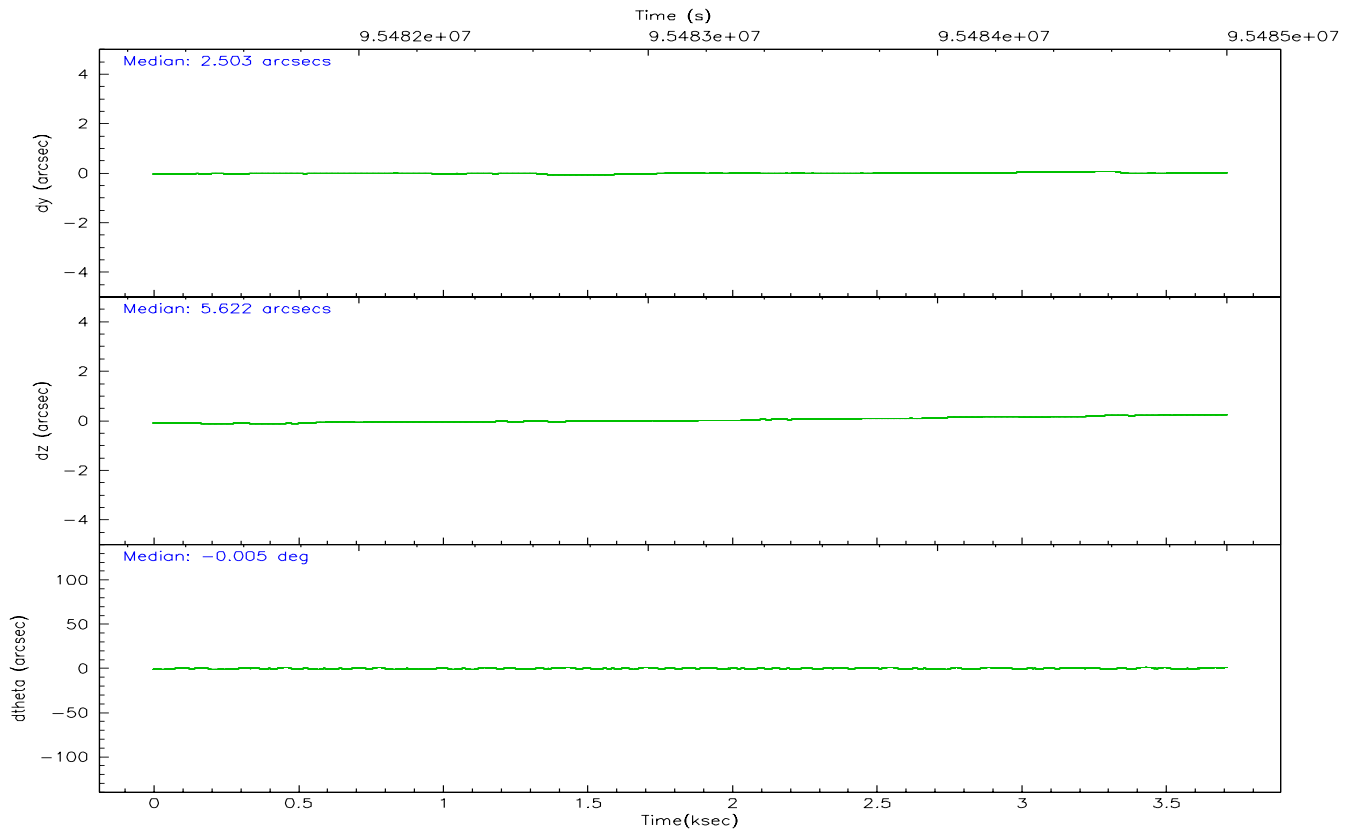
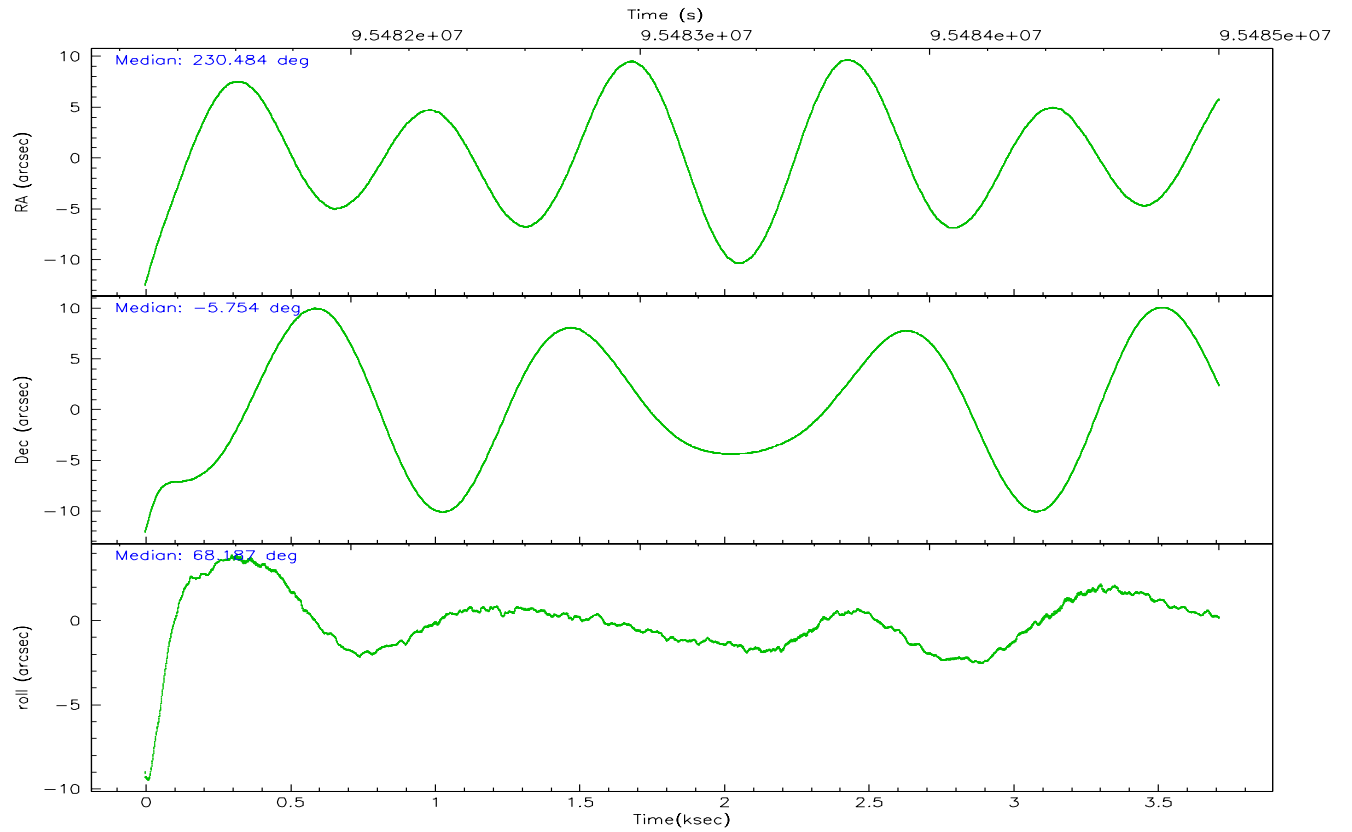
	ccd 2	ccd 3	ccd 5	ccd 6	ccd 7	ccd 8
grade 0 events	1093	1143	2982	1579	3160	1920
	4%	5%	8%	6%	9%	7%
grade 1 events	14	9	397	8	11	12
	0%	0%	1%	0%	0%	0%
grade 2 events	492	498	4812	523	3773	1077
	2%	2%	14%	2%	11%	3%
grade 3 events	219	262	399	227	1067	572
	0%	1%	1%	0%	3%	2%
grade 4 events	233	239	373	265	983	549
	1%	1%	1%	1%	2%	2%
grade 5 events	717	807	1531	892	1905	1182
	3%	3%	4%	3%	5%	4%
grade 6 events	427	408	7618	485	6750	1394
	1%	1%	22%	2%	20%	5%
grade 7 events	19542	17429	15614	18890	15292	20394
	85%	83%	46%	82%	46%	75%

## 2.2 Compared Parameters

Parameter	Planned	Actual	Parameter	Planned	Actual
Instrument	ACIS	ACIS	Obspar format version number	6	6
Detector	ACIS-235678	ACIS-235678	Obspar file type	PREDICTED	ACTUAL
Grating	NONE	NONE	Obspar update status	NONE	UPDATED
Data mode	FAINT	FAINT	Number of optional ACIS chips dropped	0	0
Observation mode	POINTING	POINTING	On-chip summing requested	N	N
Pointing RA	230.488189	230.4840313328312	Subarray requested	NONE	NONE
Pointing Dec	-5.780901	-5.753853815826868	Alternating exposures requested	N	N
Pointing Roll	68.032438	68.18861211192944	Primary exposure time	0.000000	3.2
SIM focus pos (mm)	-0.684267	-0.6828225247311905			
SIM defocus (mm)	0	0.001444936568705701			
SIM translation stage pos (mm)	-190.132523	-190.1400660498719			
SIM translation stage offset (mm)	0	0.00754346686406393			
Observation start time	95481476.184000	95480435.33140799			
Observation start date	2001-01-10T02:36:52	2001-01-10T02:20:35			
Observation end time	95484998.184000	95485312.28159501			
Observation end date	2001-01-10T03:35:34	2001-01-10T03:41:52			
Read mode	TIMED	TIMED			

## 2.3 Aspect



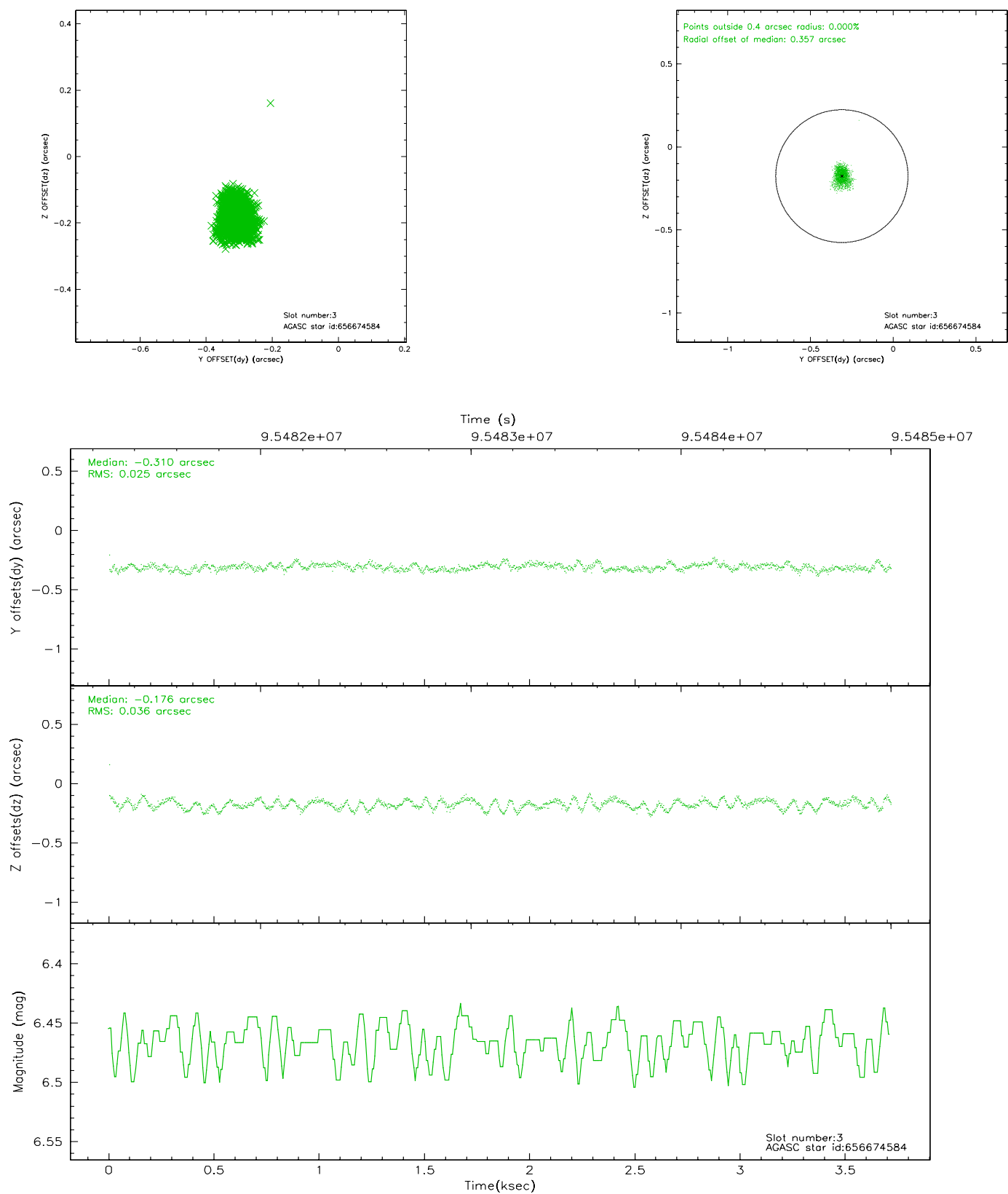


### Slot Statistics

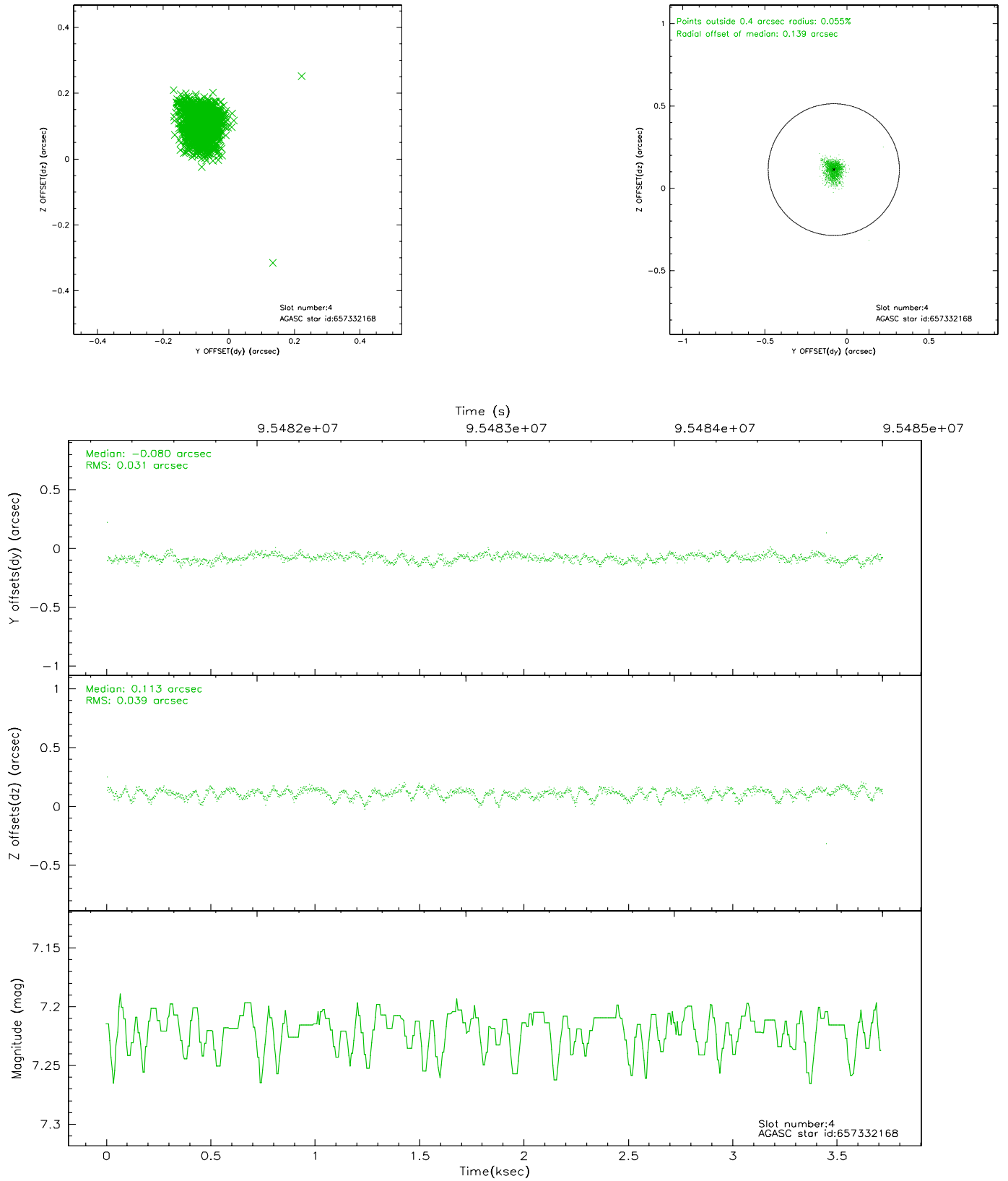
slot	status	id	mag	n_pts	med_dy	med_dz	dr1	dr2	ra	dec	mean_y	mean_z
0	FID	ACIS-S-2	7.11	906	-0.030	0.021	0.007	0.011	0.000000	0.000000	-755.13	-1726.78
1	FID	ACIS-S-4	7.21	906	-0.043	0.009	0.005	0.009	0.000000	0.000000	2157.34	179.99
2	FID	ACIS-S-5	7.23	906	0.042	-0.021	0.006	0.010	0.000000	0.000000	-1805.75	175.49
3	GUIDE	656674584	6.47	1813	-0.310	-0.176	0.046	0.077	230.152092	-5.119757	1754.85	2008.11
4	GUIDE	657332168	7.22	1813	-0.080	0.113	0.050	0.087	230.858570	-6.610488	-2274.77	-2344.35
5	GUIDE	657328480	9.01	1812	0.088	0.126	0.058	0.094	230.806614	-5.708036	667.50	-960.64
6	GUIDE	656675472	9.50	1813	-0.072	0.015	0.086	0.142	230.385691	-5.242868	1658.06	1065.22
7	GUIDE	657199248	9.46	1812	0.371	-0.070	0.089	0.144	230.044264	-6.264985	-2210.80	821.94

## 2.4 Star Slots

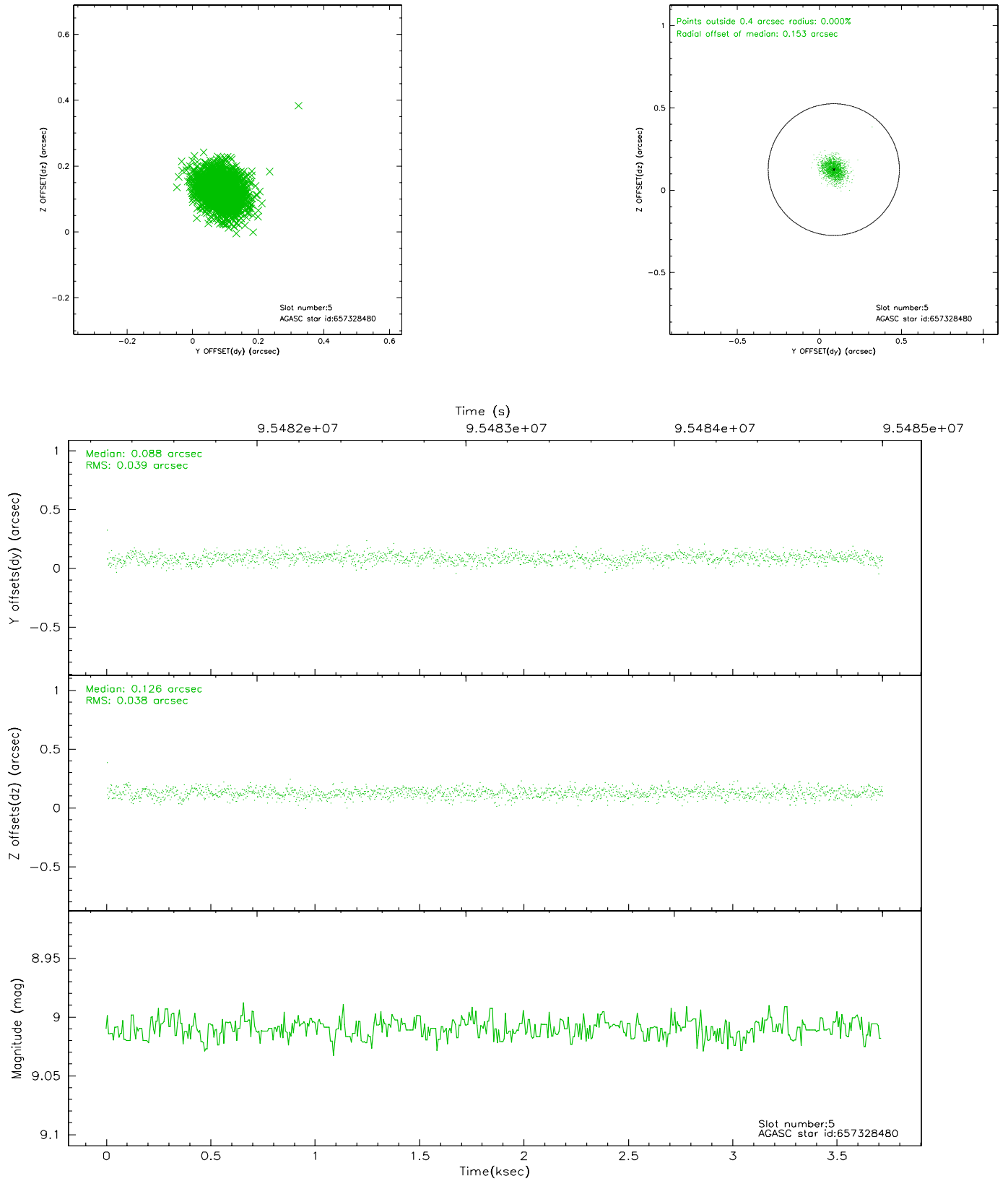
### 2.4.1 Slot 3



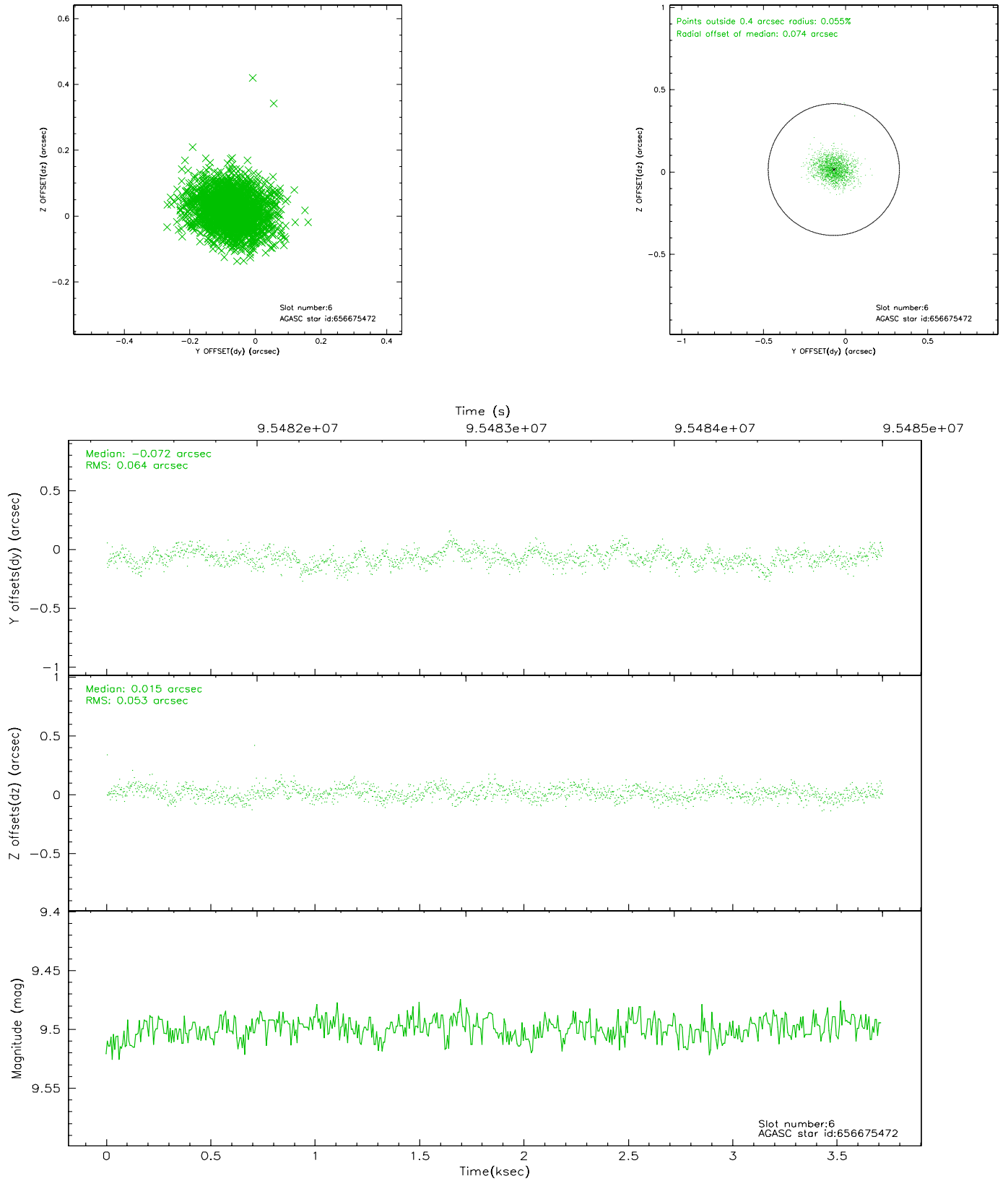
## 2.4.2 Slot 4



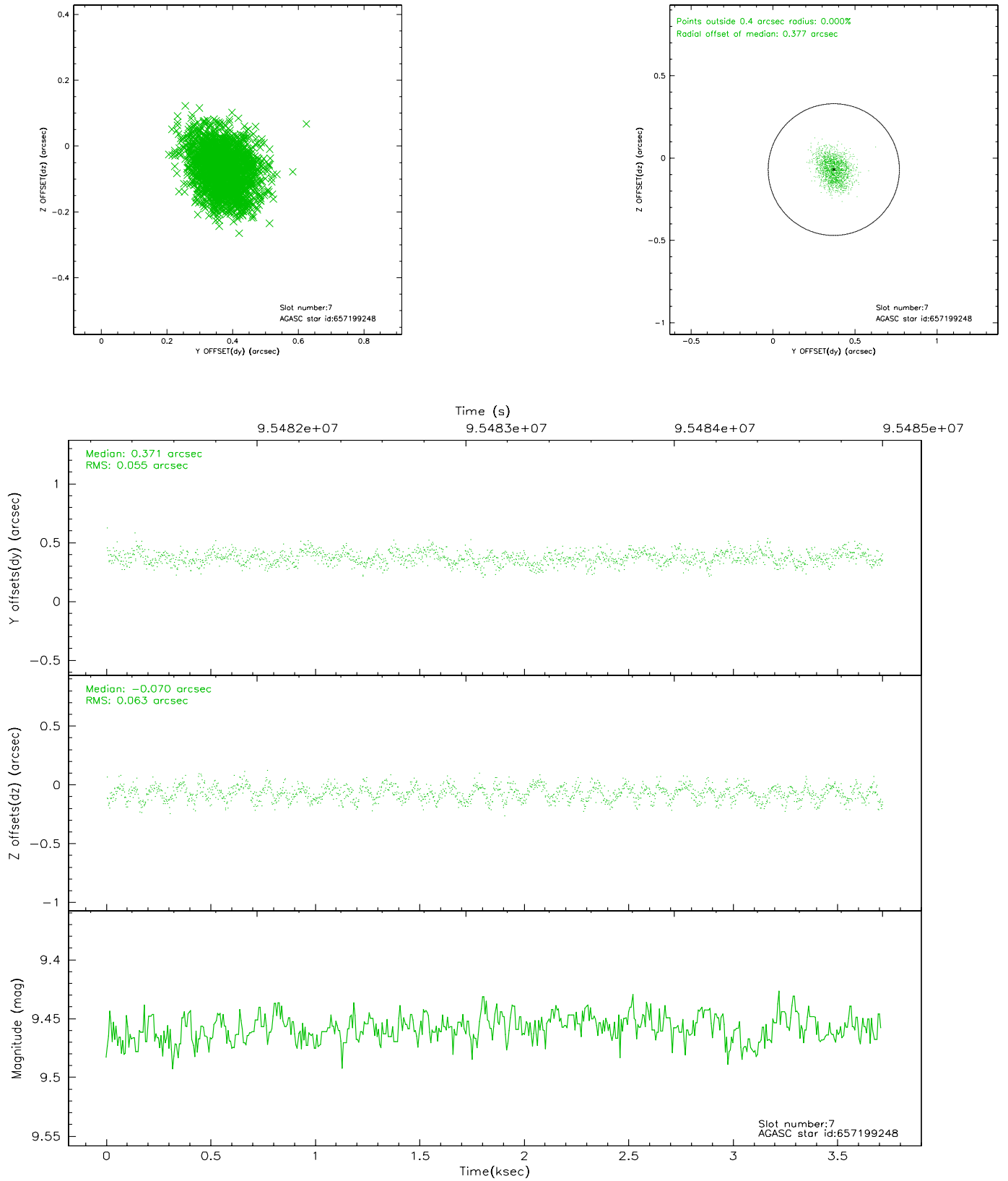
### 2.4.3 Slot 5



## 2.4.4 Slot 6

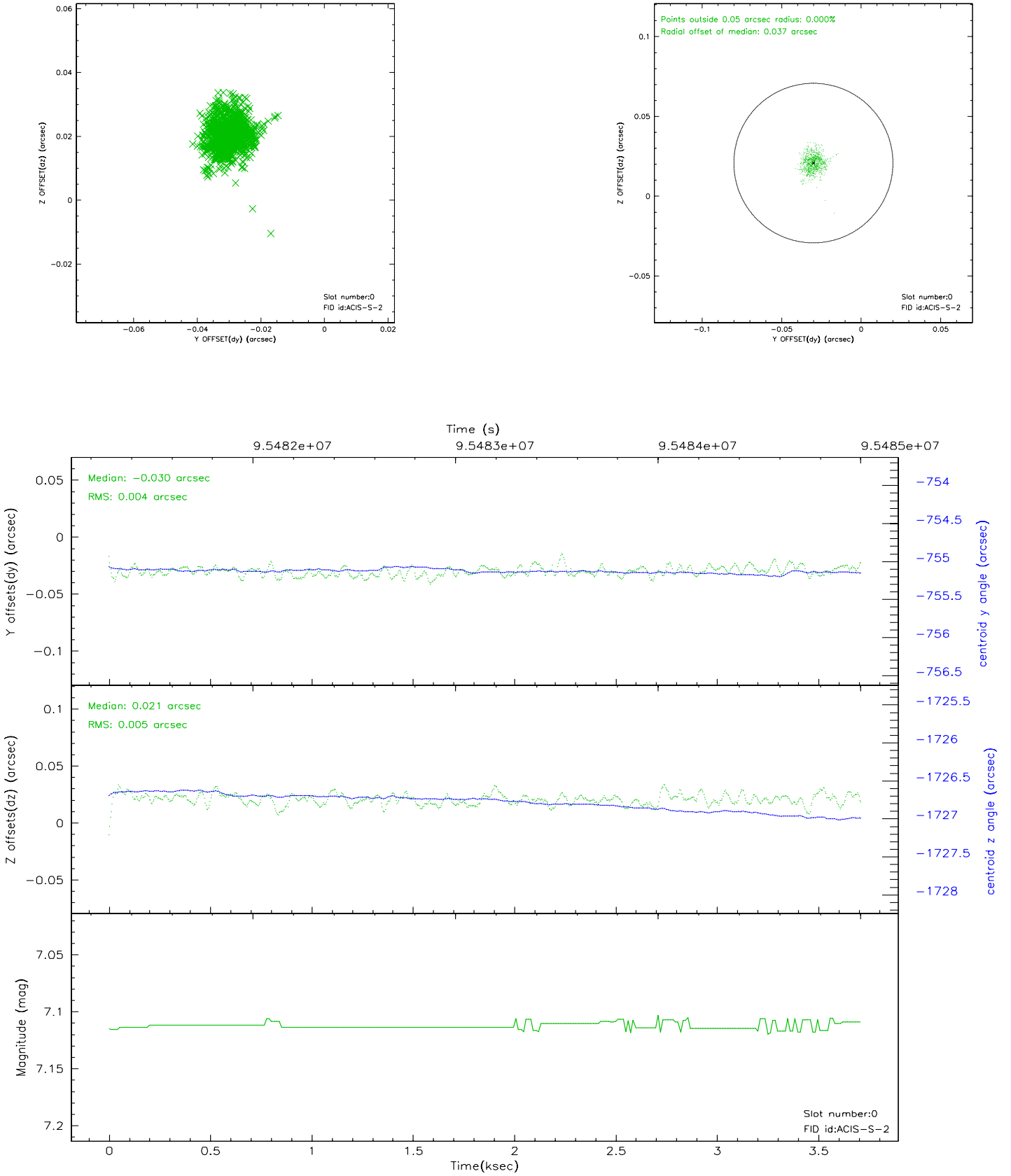


## 2.4.5 Slot 7

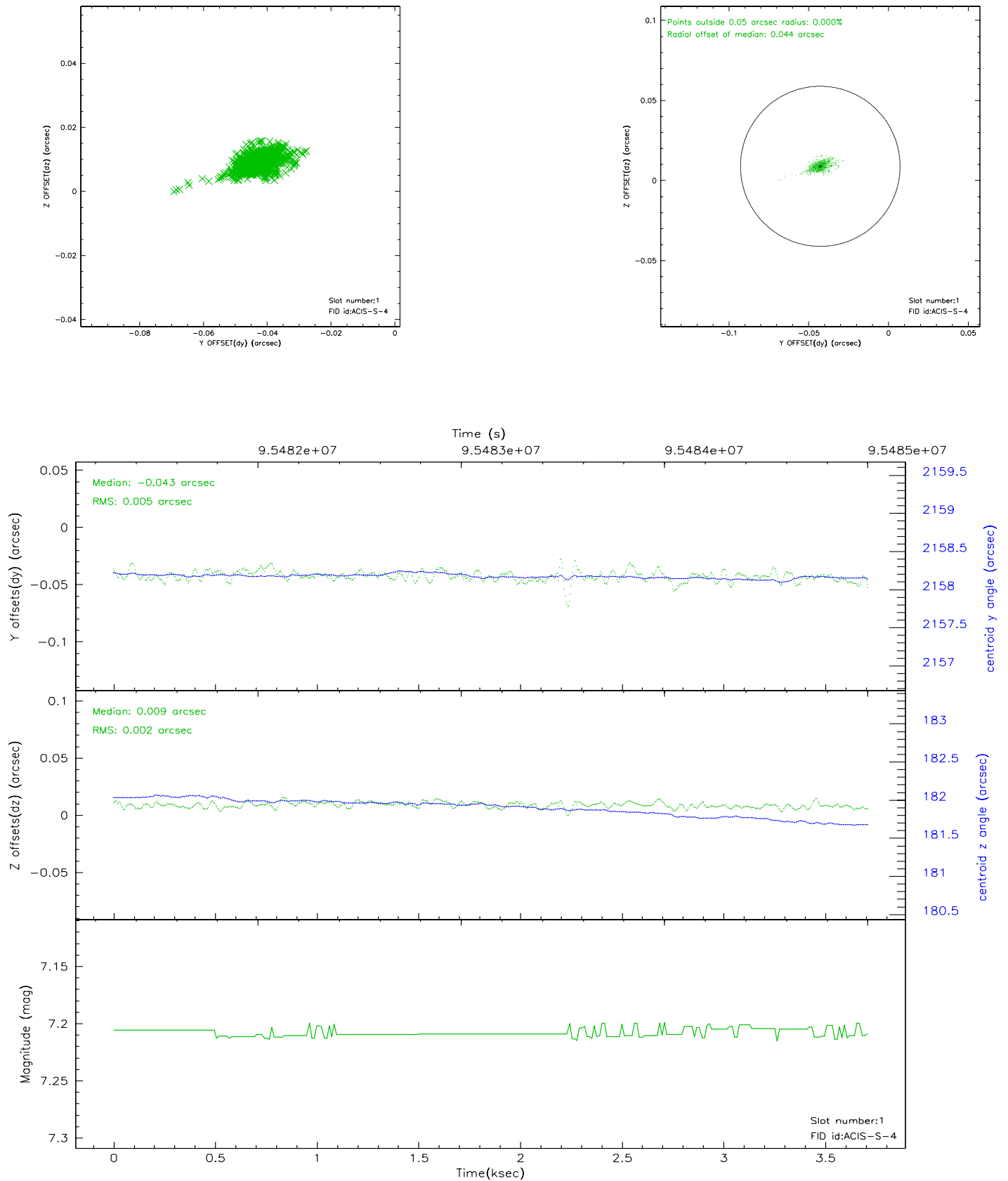


## 2.5 FID Slots

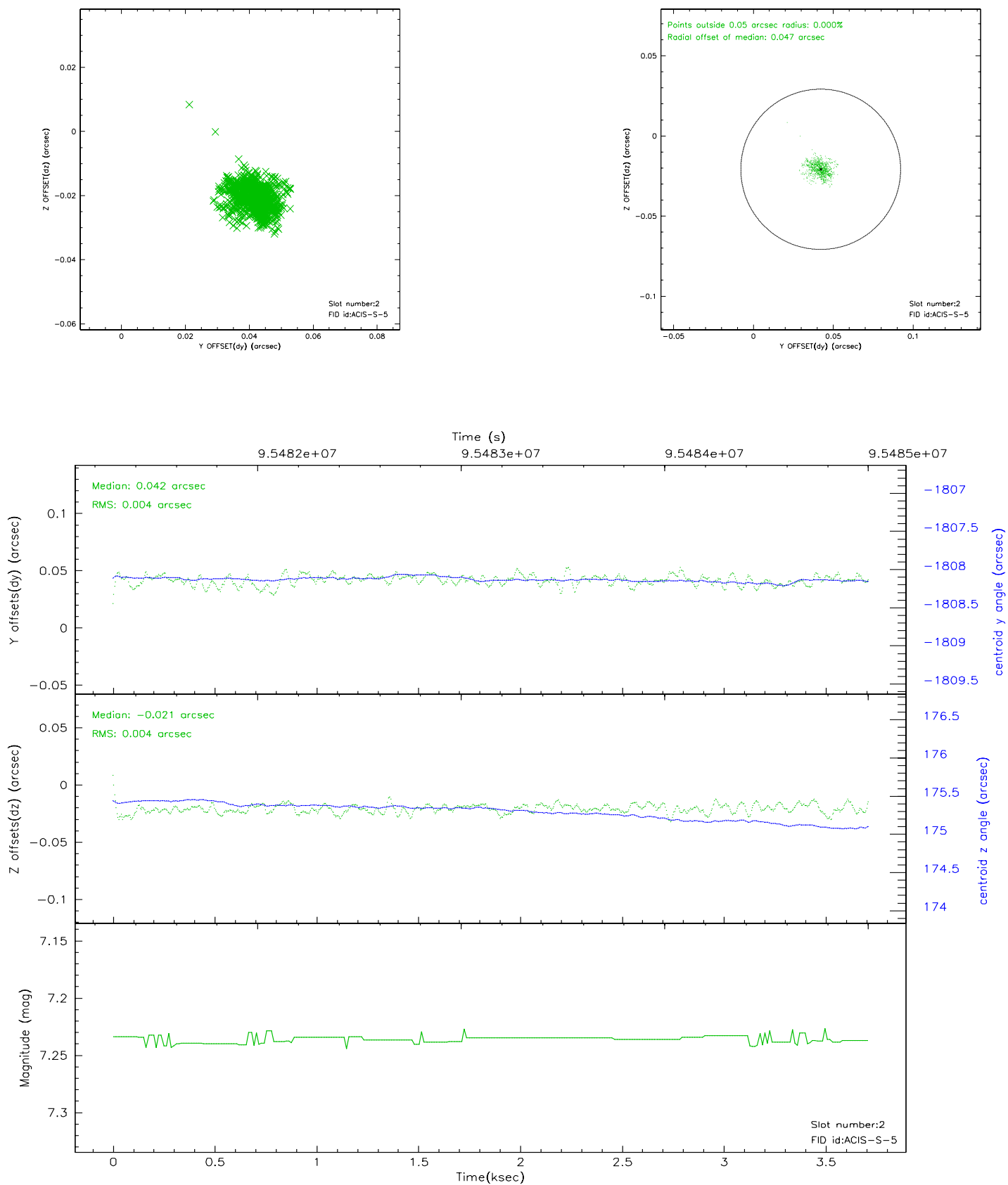
### 2.5.1 Slot 0



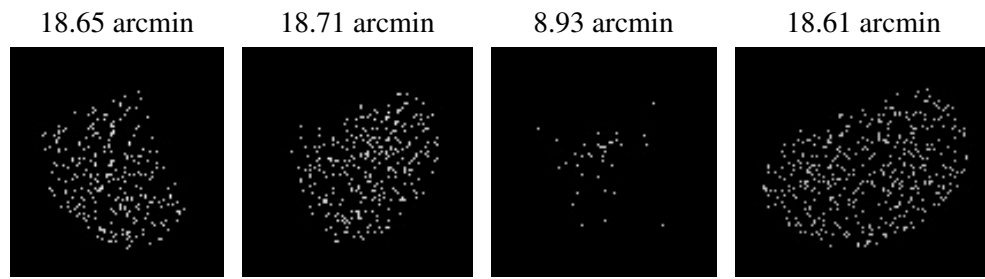
## 2.5.2 Slot 1



### 2.5.3 Slot 2



### 3 Point Sources



## A Summary

### A.1 Status

V&V Scientist	Jen Lauer
V&V Date (YYYY-MM-DD)	2006.11.02
V&V Edition	1
V&V Disposition and Status	OK
V&V Charge Time	3.638

### A.2 Comments

Monitor constraint met.