

V&V Reference Report

L2 ASCDS Version : 8.4.5

Observation 2030 - L2 Version 3
Chandra X-Ray Center

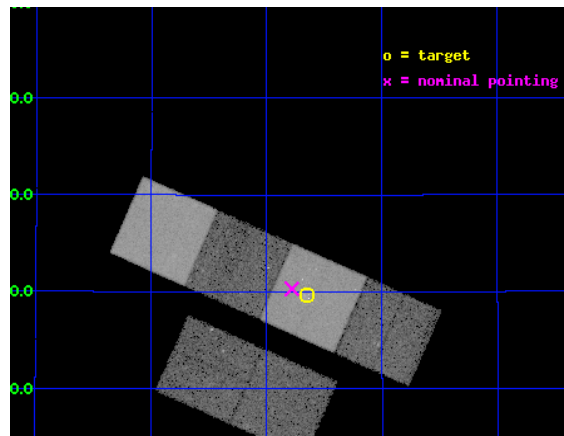
L2 Processing Date : Sep 25 2012

Contents

1	Front	2
2	OBI	3
2.1	OBI	3
2.1.1	Images	3
2.1.2	Bias	3
2.1.3	Parameters	4
2.1.4	Events	4
2.2	Compared Parameters	5
2.3	Aspect	6
2.4	Star Slots	9
2.4.1	Slot 3	9
2.4.2	Slot 4	10
2.4.3	Slot 5	11
2.4.4	Slot 6	12
2.4.5	Slot 7	13
2.5	FID Slots	14
2.5.1	Slot 0	14
2.5.2	Slot 1	15
2.5.3	Slot 2	16
A	Summary	17
A.1	Status	17
A.2	Comments	17

1 Front

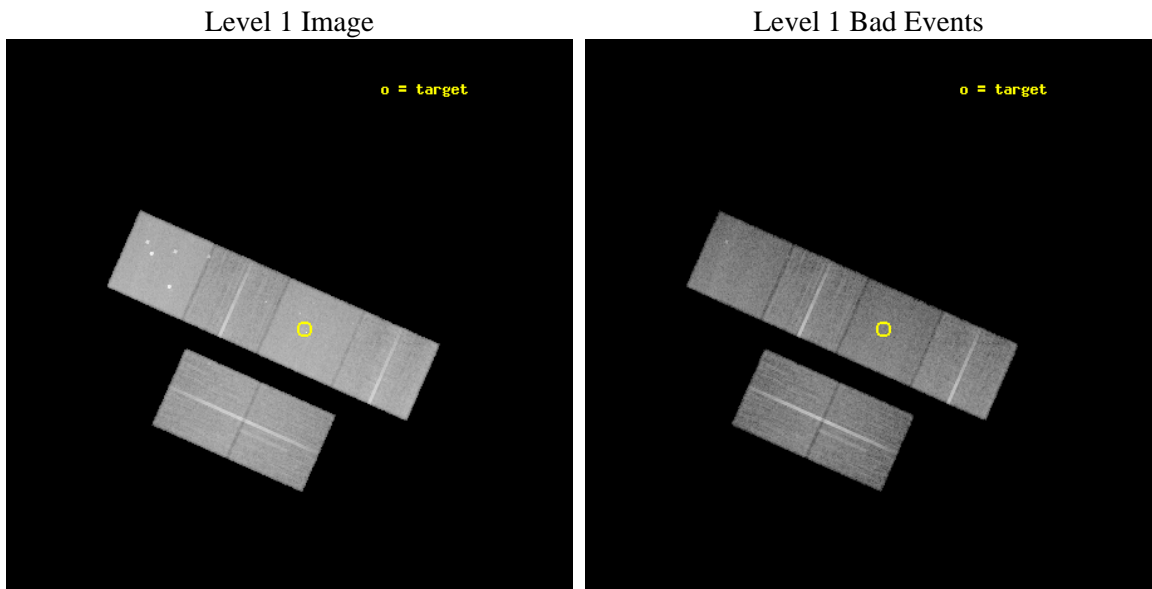
seq_num	600164	Sequence number
obs_id	2030	Observation id
title	STARBURST-DRIVEN OUTFLOWS AND THE EVOLUTION OF DWARF GALAXIES	Prop
observer	Dr. Tim Heckman	Principal investigator
object	NGC 4214	Source name
dtcycle	0	
cycle	P	events from which exps? Prim/Second/Both
ra_targ	183.91125	Observer's specified target RA [deg]
dec_targ	36.328306	Observer's specified target Dec [deg]
ra_nom	183.94515790595	Nominal RA [deg]
dec_nom	36.338464463788	Nominal Dec [deg]
roll_nom	23.862441323596	Nominal Roll [deg]
revision	3	Processing version of data
ontime	26760.826916382	Sum of GTIs [s]
livetime	26421.965212531	Livetime [s]
ontime2	26760.867956385	Sum of GTIs [s]
ontime3	26760.703796387	Sum of GTIs [s]
ontime5	26760.785876378	Sum of GTIs [s]
ontime6	26760.74483639	Sum of GTIs [s]
ontime7	26760.826916382	Sum of GTIs [s]
ontime8	26757.421796128	Sum of GTIs [s]
l2events	267501	Number of level 2 events



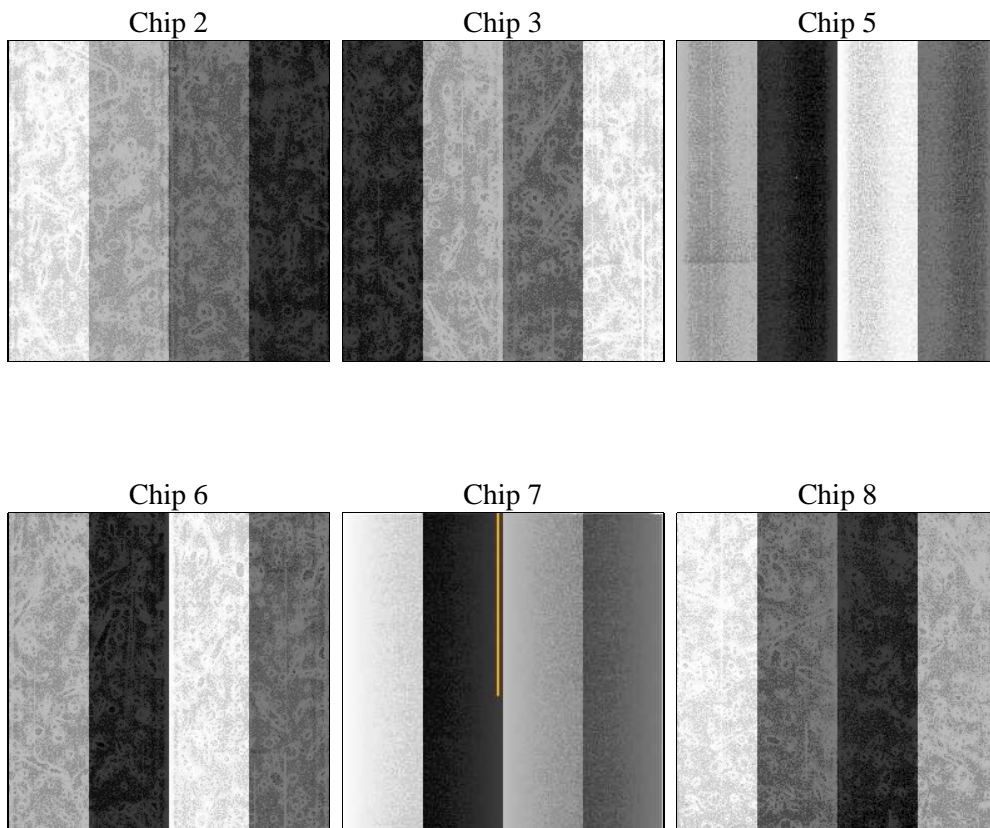
2 OBI

2.1 OBI

2.1.1 Images



2.1.2 Bias



2.1.3 Parameters

obi_num	0	Obi number	sched_exp_time	27000.000000	[s] Scheduled observation exposure time
ascdsver	8.4.5	Processing system revision	ontime	26760.826916382	Sum of GTIs [s]
caldsver	4.5.1.1	 	ontime2	26760.867956385	Sum of GTIs [s]
date	2012-09-26T00:23:54	Date and time of file creation	ontime3	26760.703796387	Sum of GTIs [s]
revision	3	Processing version of data	ontime5	26760.785876378	Sum of GTIs [s]
			ontime6	26760.74483639	Sum of GTIs [s]
			ontime7	26760.826916382	Sum of GTIs [s]
			ontime8	26757.421796128	Sum of GTIs [s]
			l1events	1167933	Number of level 1 events

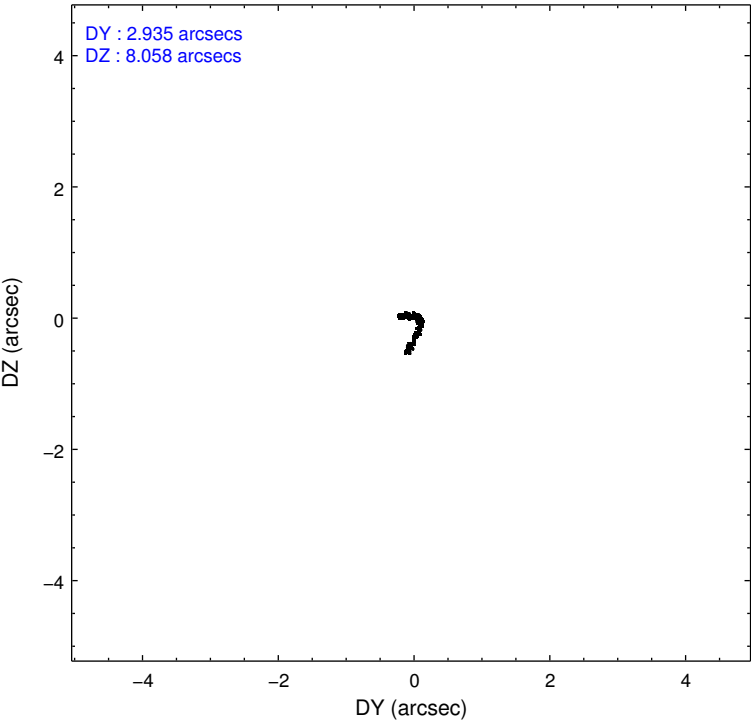
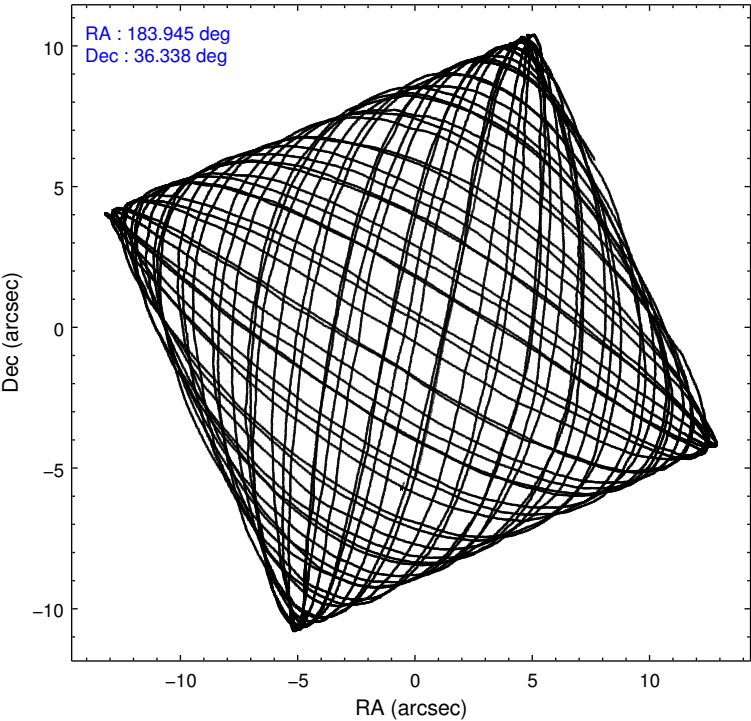
2.1.4 Events

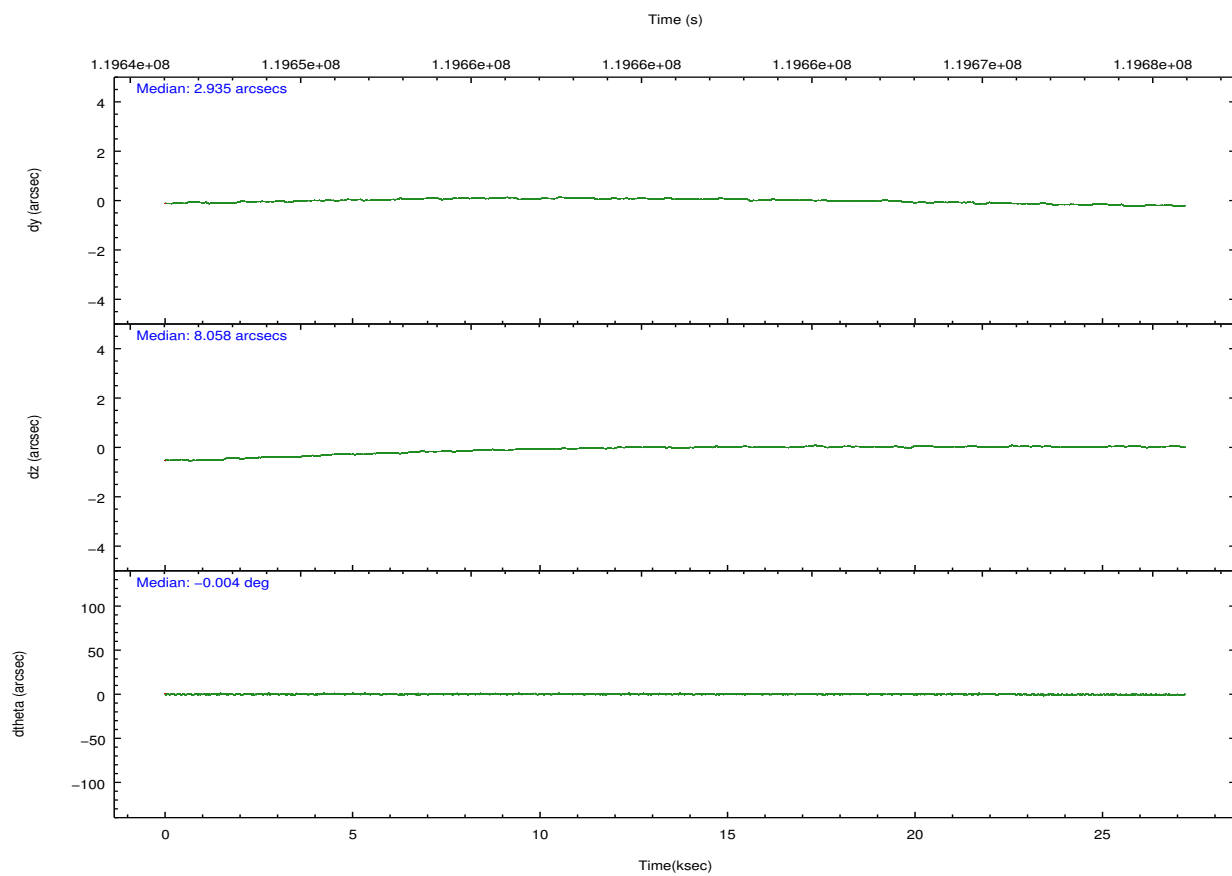
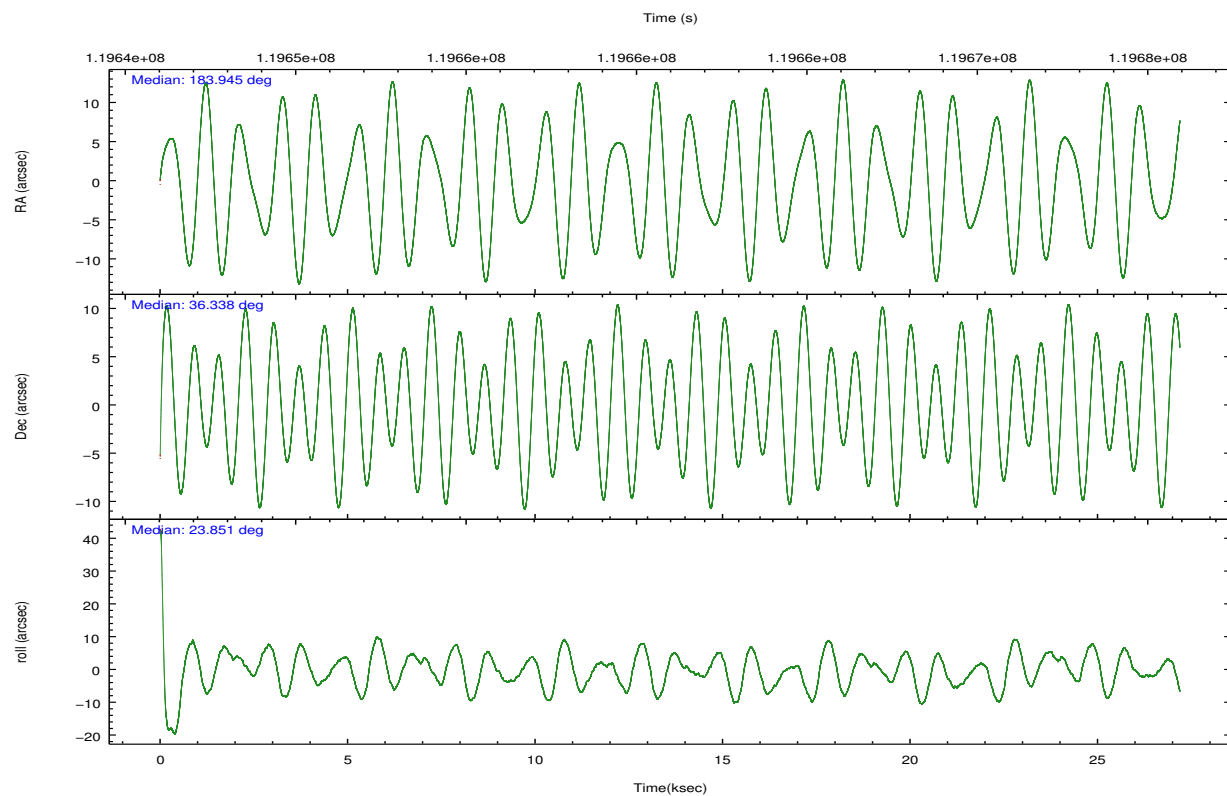
	ccd 2	ccd 3	ccd 5	ccd 6	ccd 7	ccd 8		ccd 2	ccd 3	ccd 5	ccd 6	ccd 7	ccd 8
level 1 events	169858	156567	245395	168258	219034	208821	grade 0 events	8293	8062	21089	8046	10344	13393
rejected events	150684	137992	125394	148618	122903	167851		4%	5%	8%	4%	4%	6%
rejected %	88%	88%	51%	88%	56%	80%	grade 1 events	75	73	635	89	179	121
								0%	0%	0%	0%	0%	0%
							grade 2 events	4049	3755	31982	4074	19192	8654
								2%	2%	13%	2%	8%	4%
							grade 3 events	1710	1751	5044	1875	8809	4453
								1%	1%	2%	1%	4%	2%
							grade 4 events	1781	1761	4897	1926	8518	4105
								1%	1%	1%	1%	3%	1%
							grade 5 events	5776	6374	17605	7109	20188	8780
								3%	4%	7%	4%	9%	4%
							grade 6 events	3345	3248	57003	3721	49281	10368
								1%	2%	23%	2%	22%	4%
							grade 7 events	144829	131543	107140	141418	102523	158947
								85%	84%	43%	84%	46%	76%

2.2 Compared Parameters

Parameter	Planned	Actual	Parameter	Planned	Actual
Instrument	ACIS	ACIS	Obspar format version number	7	7
Detector	ACIS-235678	ACIS-235678	Obspar file type	PREDICTED	ACTUAL
Grating	NONE	NONE	Obspar update status	NONE	UPDATED
Data mode	FAINT	FAINT	Number of optional ACIS chips dropped	0	0
Observation mode	POINTING	POINTING	On-chip summing requested	N	N
[deg] Pointing RA	183.925514	183.9451579059542	Subarray requested	NONE	NONE
[deg] Pointing Dec	36.316246	36.33846446378813	Alternating exposures requested	N	N
[deg] Pointing Roll	23.717429	23.86244132359622	[s] Primary exposure time	0.000000	3.2
[mm] SIM focus pos	-0.684267	-0.6828225247311905			
[mm] SIM defocus	0	0.001444936568705701			
[mm] SIM translation stage pos	-190.132523	-190.1425803651734			
[mm] SIM translation stage offset	0	0.01005778216563158			
[s] Observation start time (MET)	119647583.184000	119646680.36136			
Observation start date	2001-10-16T19:25:19	2001-10-16T19:11:20			
[s] Observation end time (MET)	119674583.184000	119674944.22499			
Observation end date	2001-10-17T02:55:19	2001-10-17T03:02:24			
Read mode	TIMED	TIMED			

2.3 Aspect



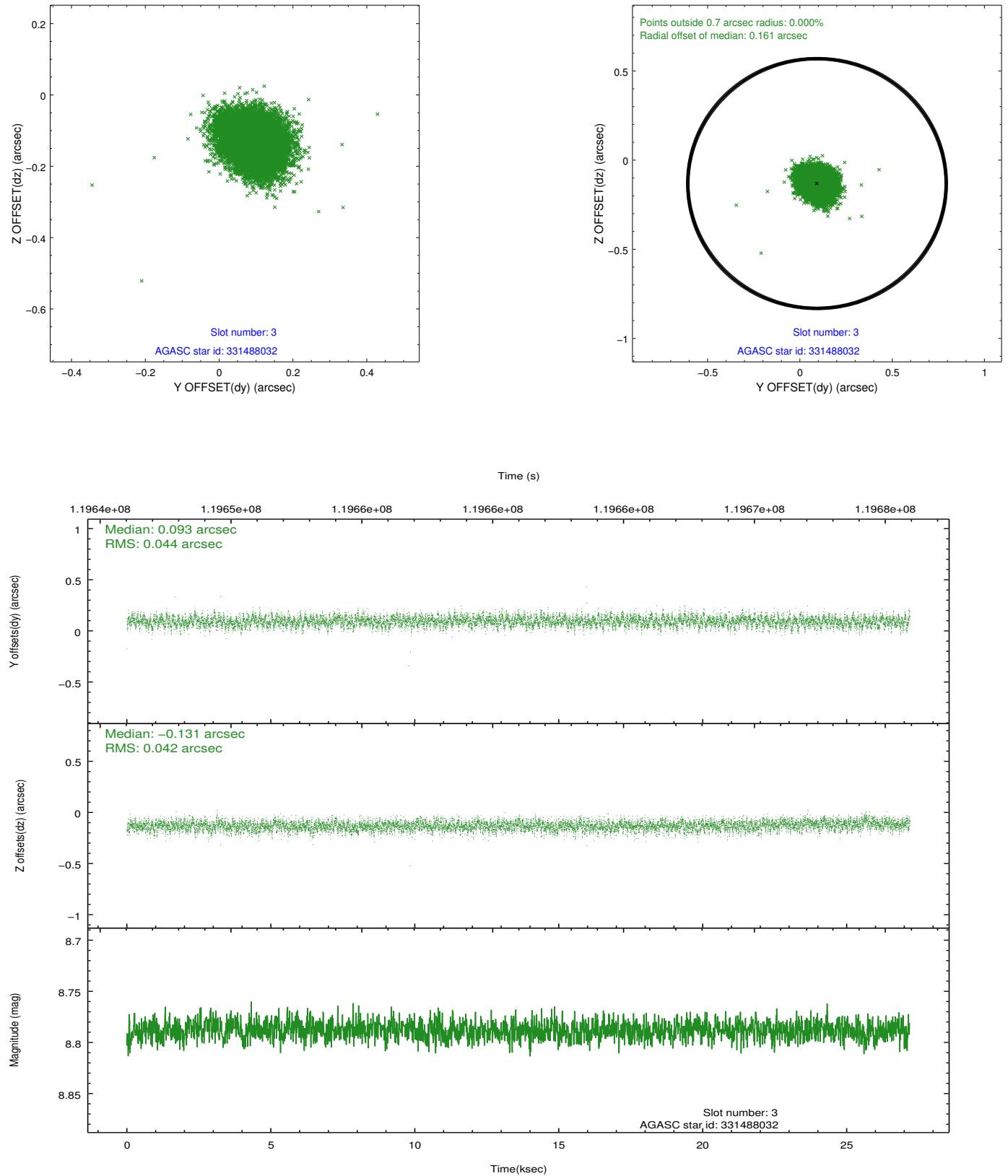


Slot Statistics

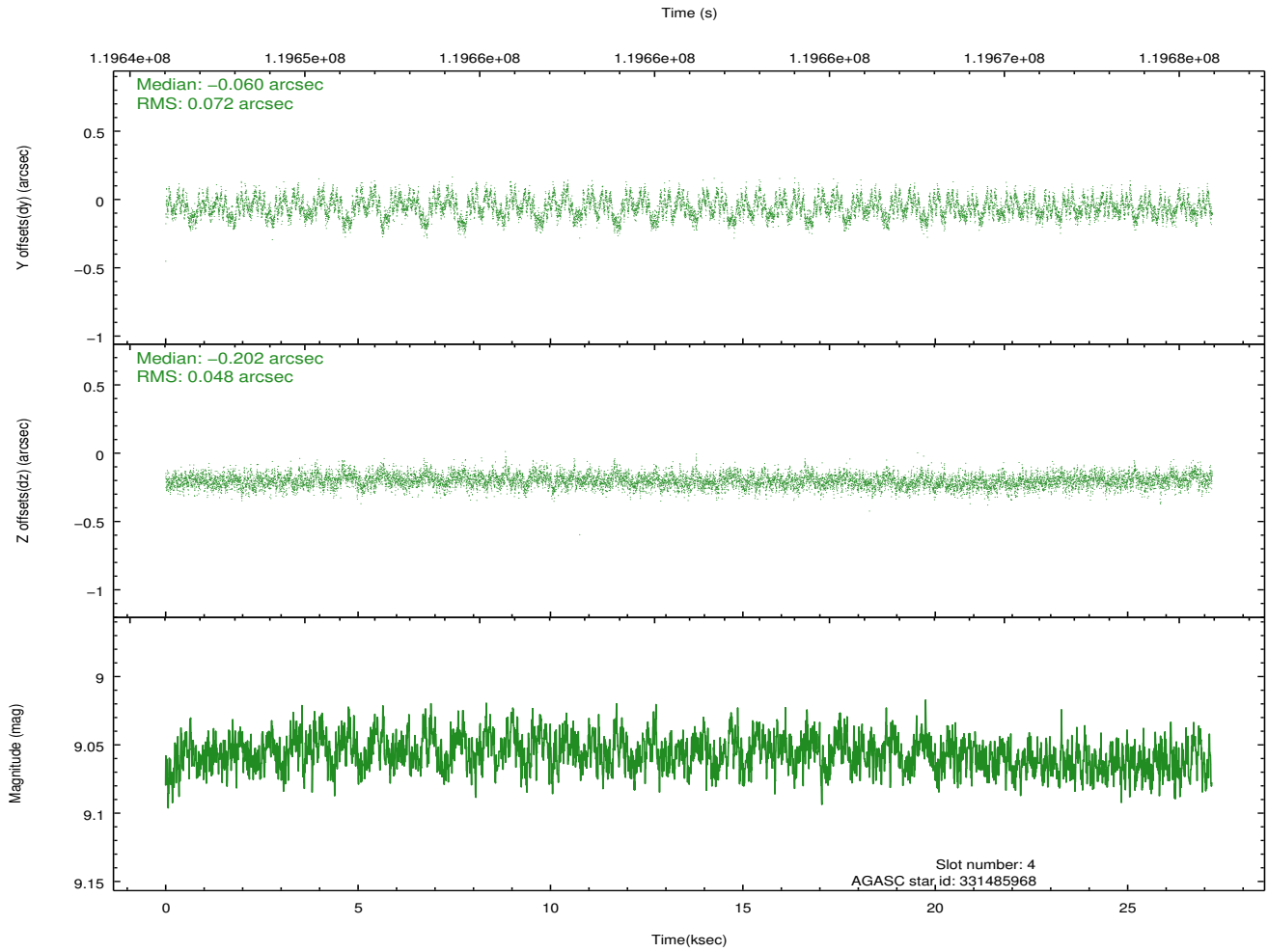
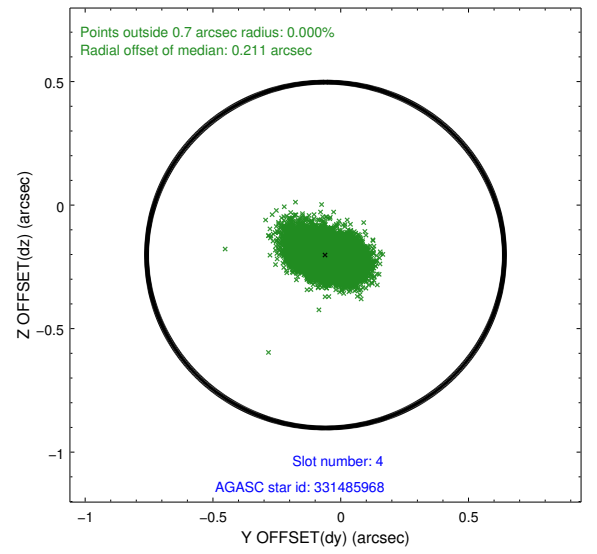
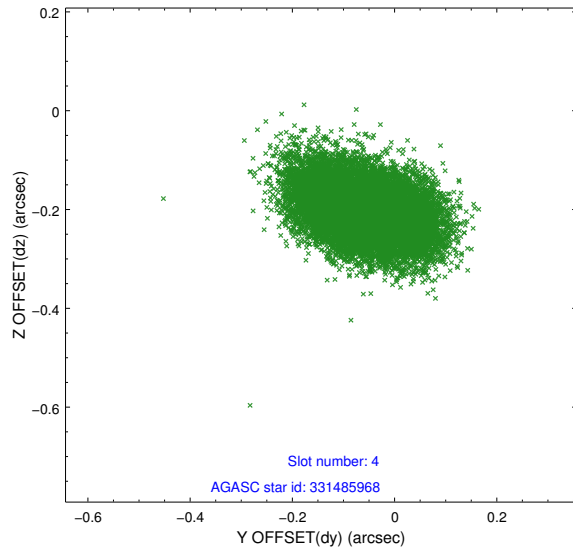
slot	status	id	mag	n_pts	med_dy	med_dz	dr1	dr2	ra	dec	mean_y	mean_z
0	FID	ACIS-S-2	7.11	6632	0.004	0.003	0.009	0.023	0.000000	0.000000	-755.57	-1729.09
1	FID	ACIS-S-4	7.20	6632	-0.053	-0.003	0.008	0.028	0.000000	0.000000	2157.63	179.26
2	FID	ACIS-S-5	7.24	6633	0.017	0.009	0.009	0.017	0.000000	0.000000	-1808.26	173.09
3	GUIDE	331488032	8.79	13260	0.093	-0.131	0.064	0.104	183.136084	36.256011	-2181.98	731.53
4	GUIDE	331485968	9.06	13260	-0.060	-0.202	0.092	0.149	183.439805	36.736932	-673.29	1953.37
5	GUIDE	331497752	9.12	13256	-0.052	0.179	0.099	0.157	183.857768	35.567281	-1266.12	-2388.37
6	GUIDE	331496008	9.37	13260	-0.059	0.067	0.079	0.130	184.214946	35.936223	222.45	-1590.58
7	GUIDE	331496608	9.60	13252	0.077	0.093	0.096	0.153	183.557200	35.638037	-1968.05	-1800.23

2.4 Star Slots

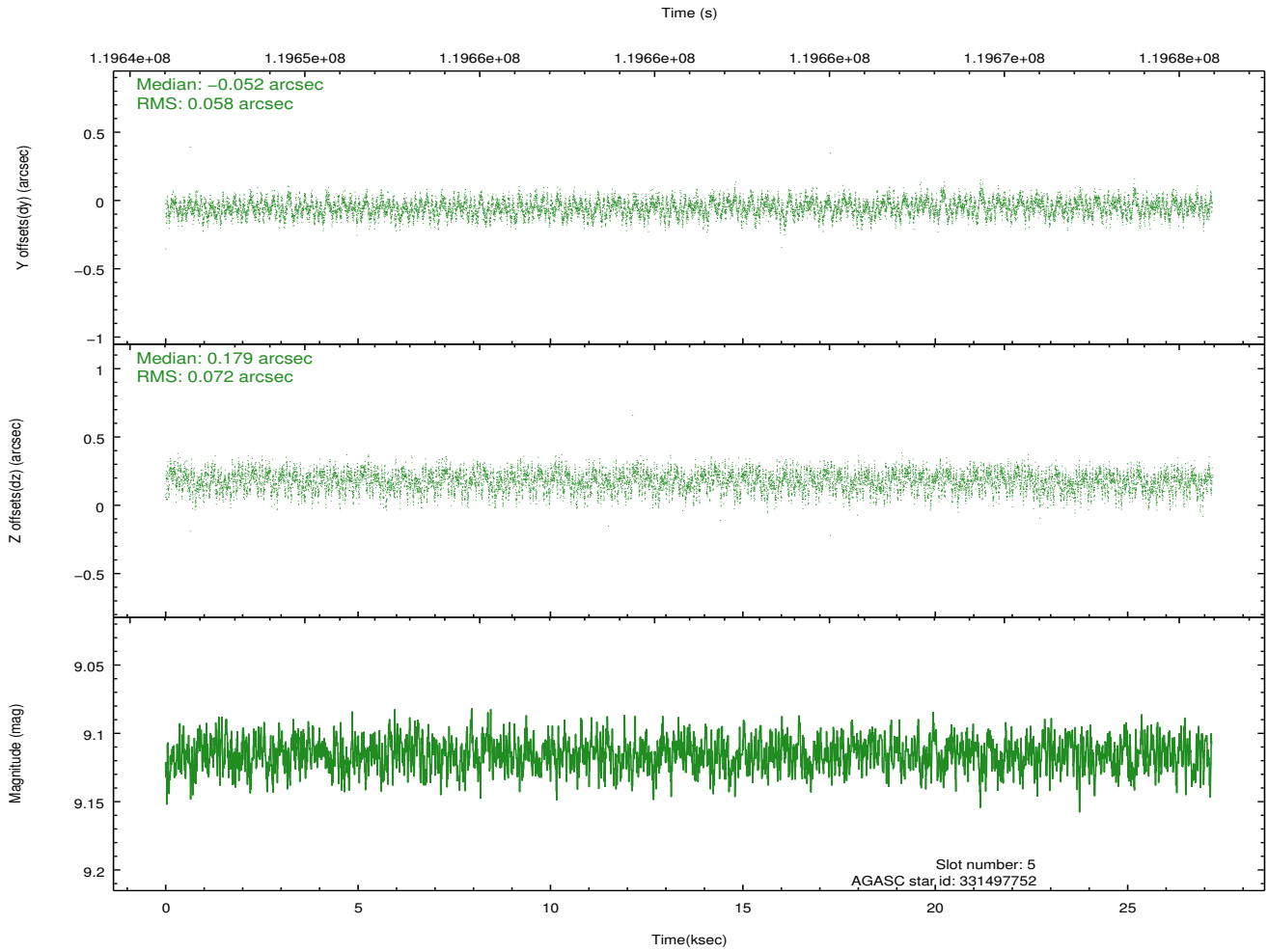
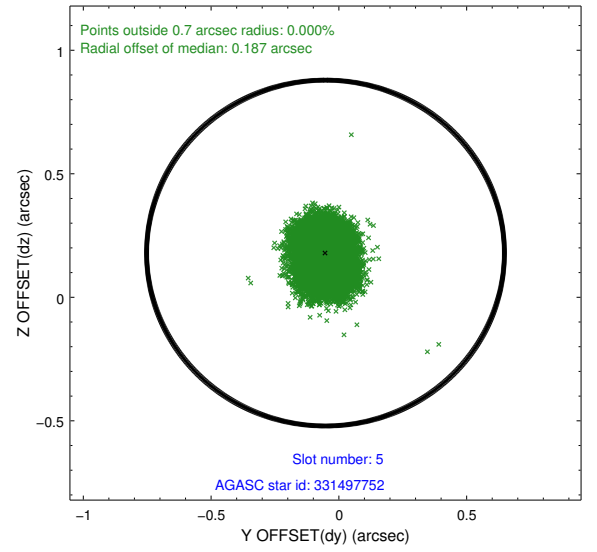
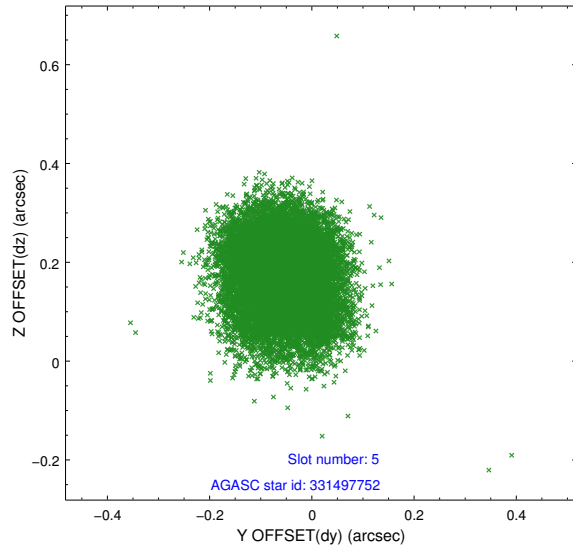
2.4.1 Slot 3



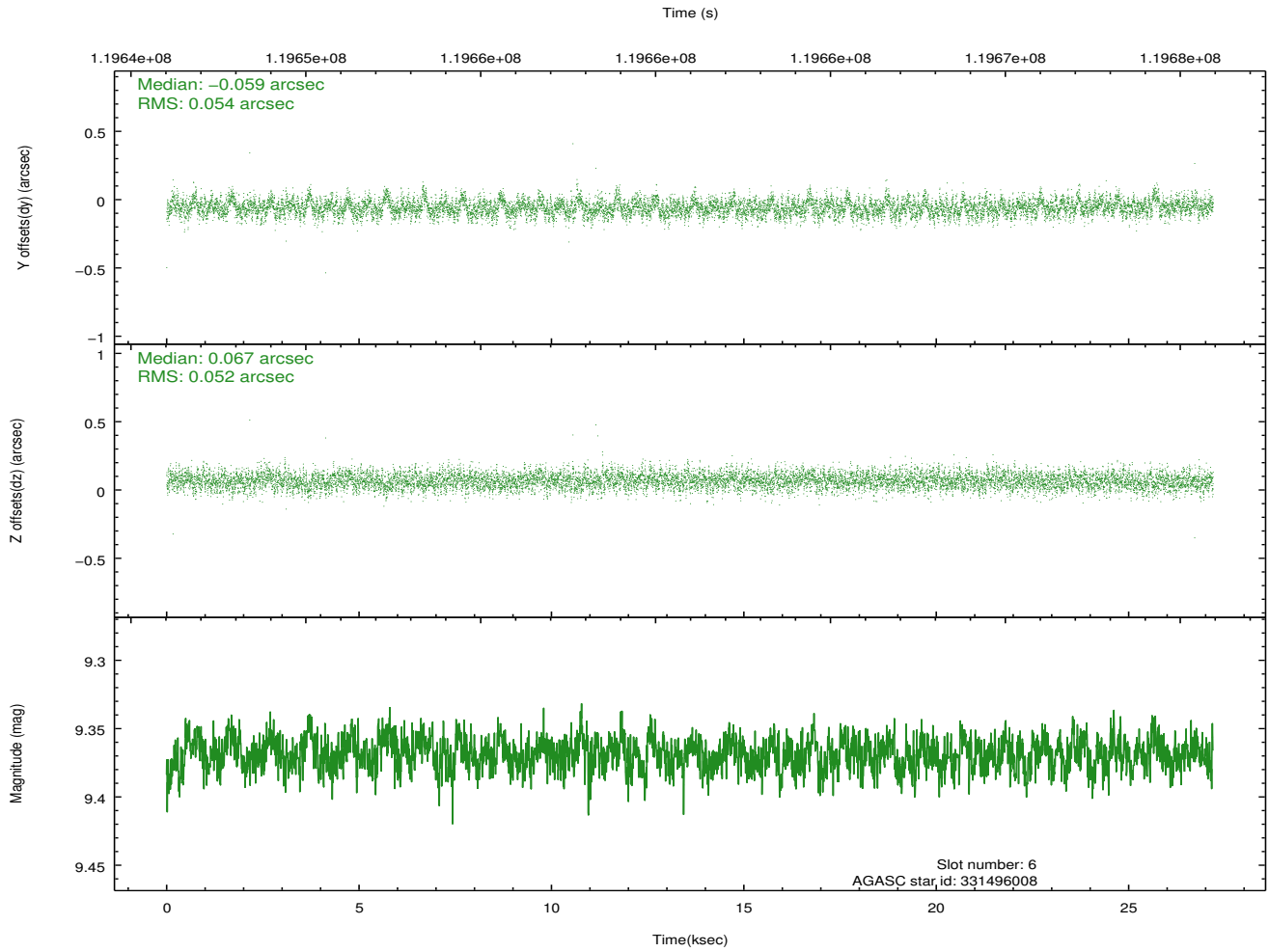
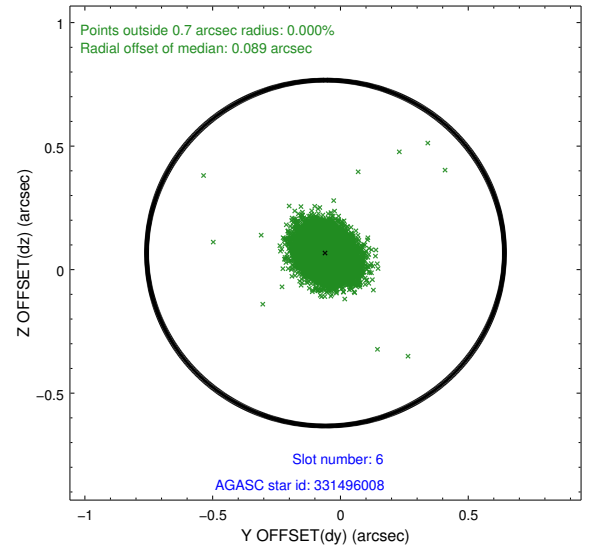
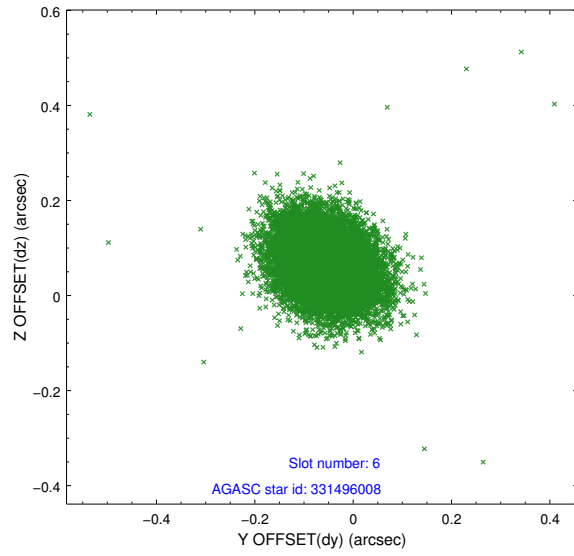
2.4.2 Slot 4



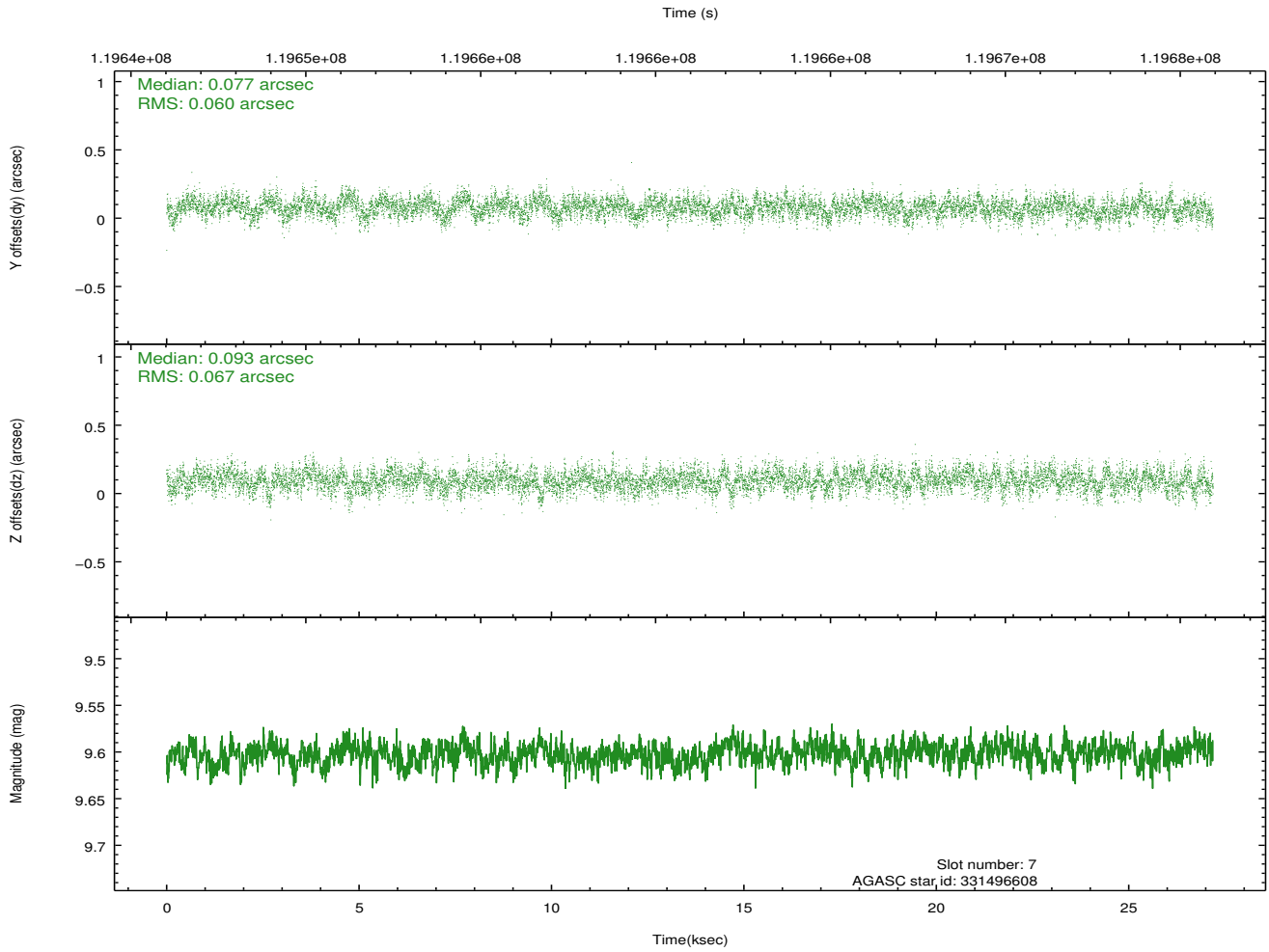
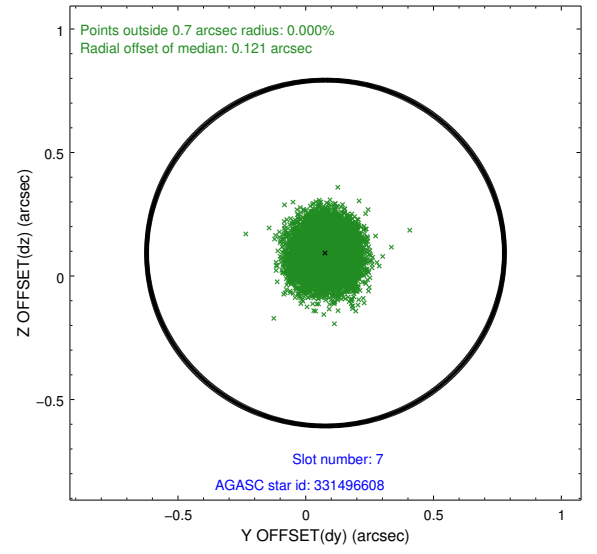
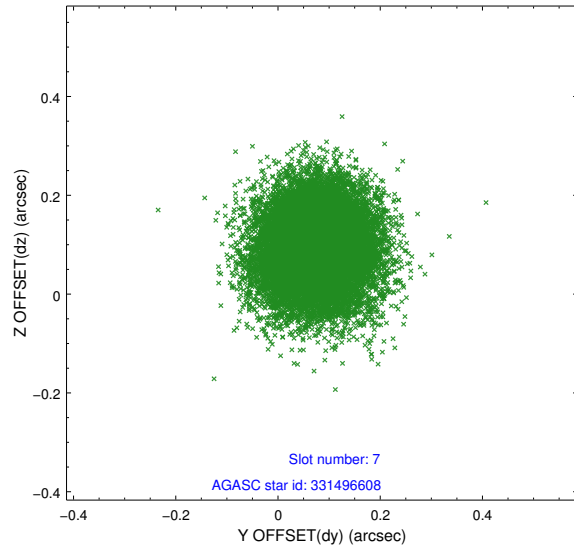
2.4.3 Slot 5



2.4.4 Slot 6

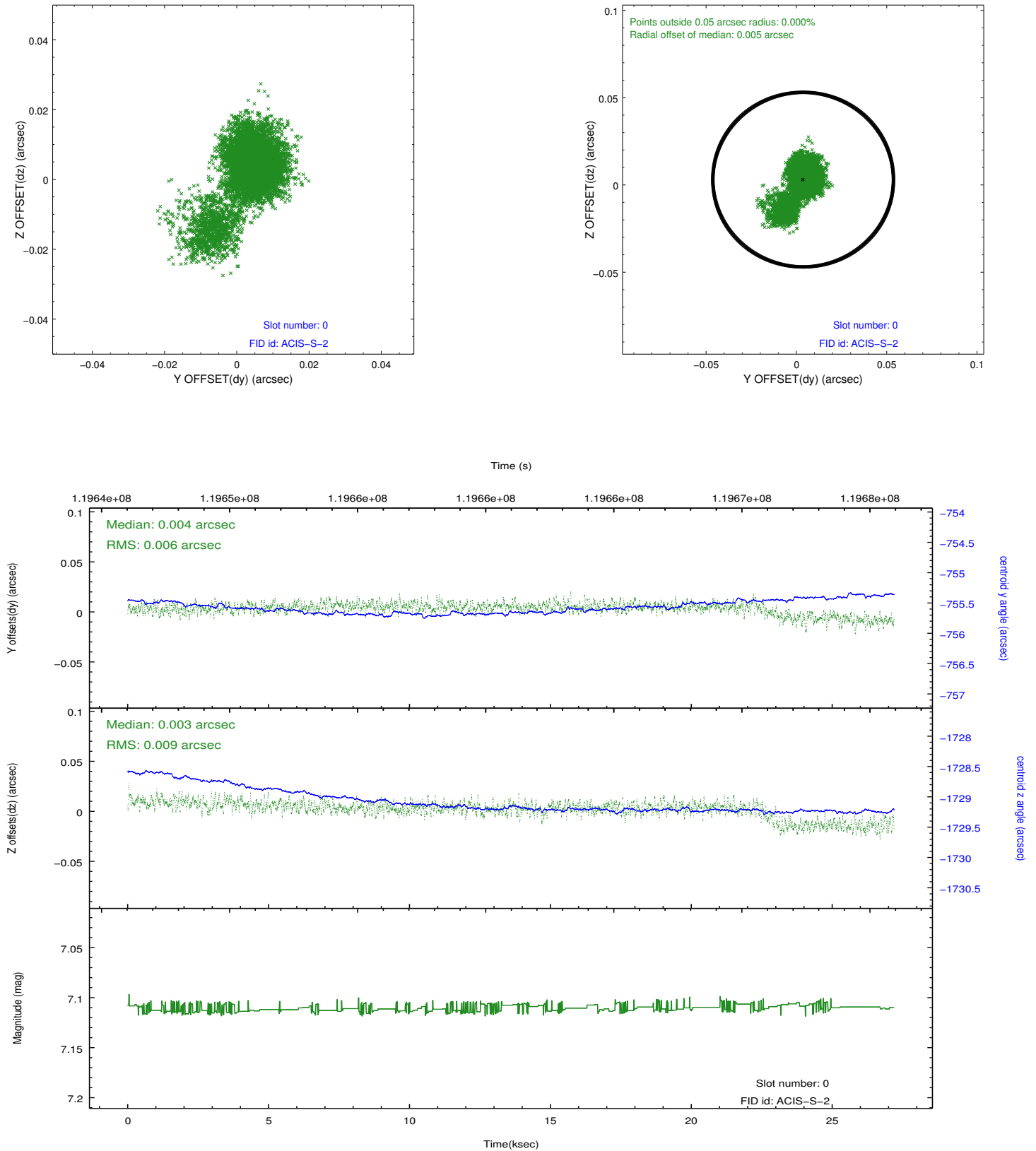


2.4.5 Slot 7

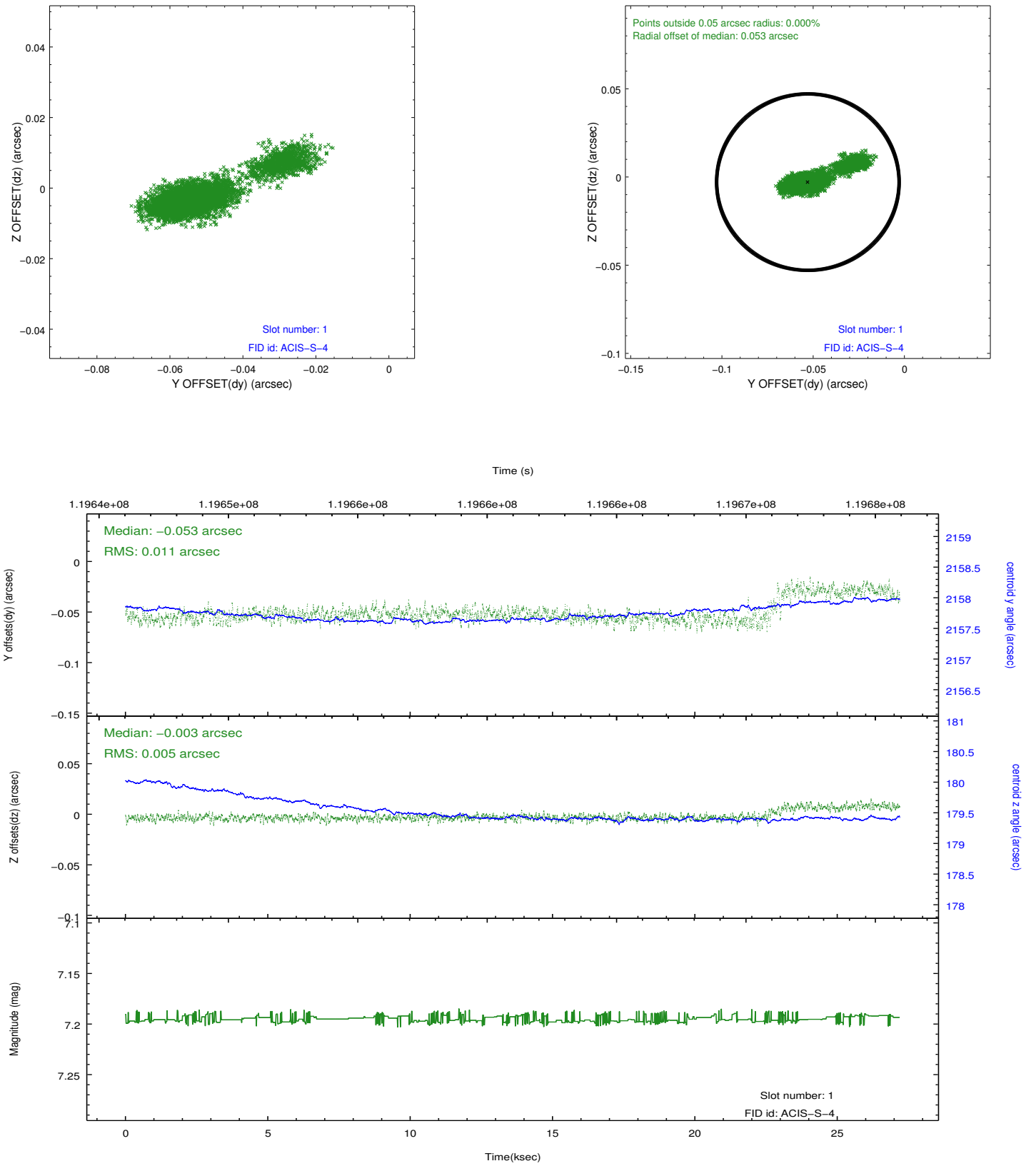


2.5 FID Slots

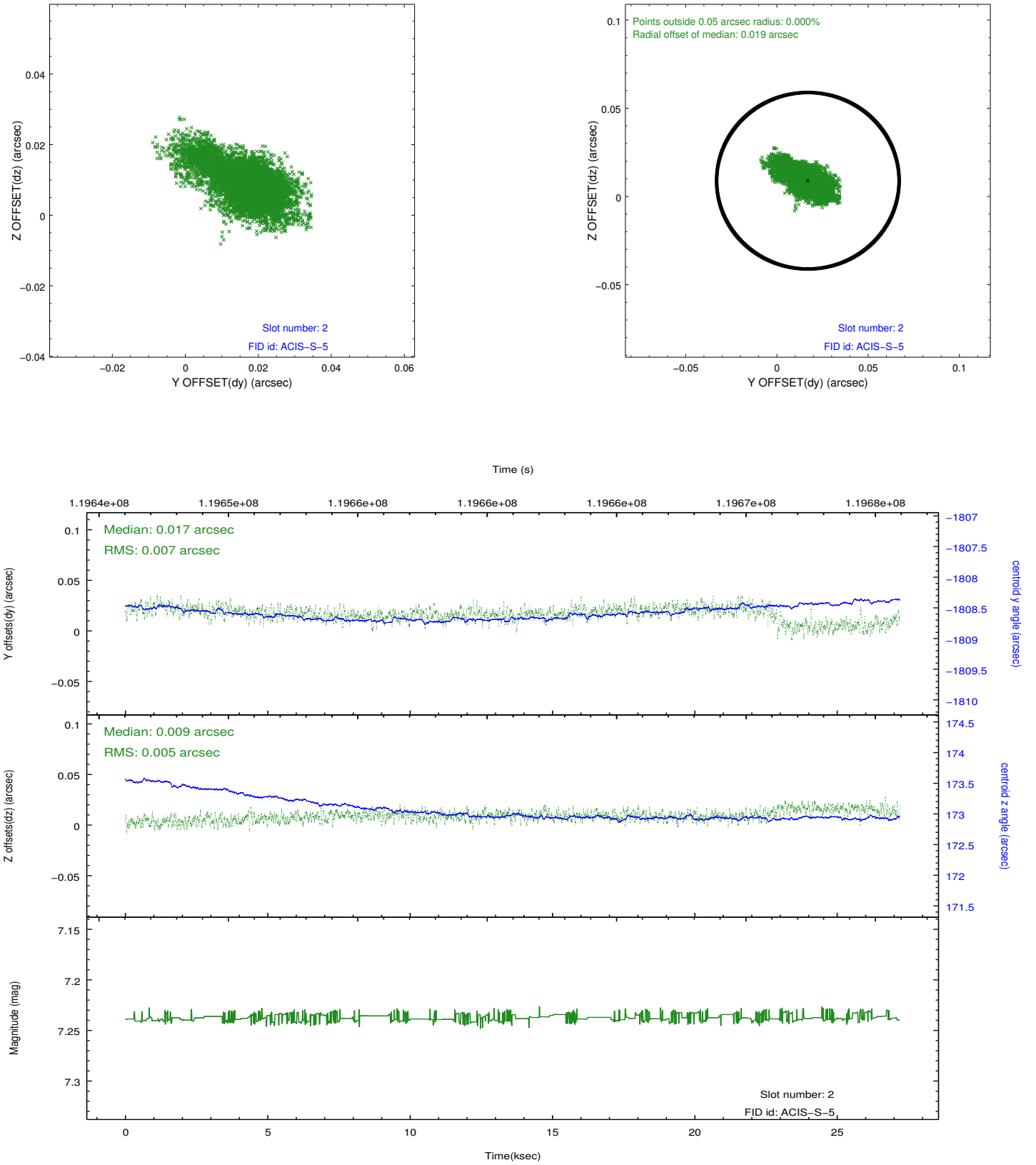
2.5.1 Slot 0



2.5.2 Slot 1



2.5.3 Slot 2



A Summary

A.1 Status

V&V Scientist	Jen Lauer
V&V Date (YYYY-MM-DD)	2012.09.27
V&V Edition	1
V&V Disposition and Status	OK
V&V Charge Time	26.761

A.2 Comments