

V&V Reference Report

L2 ASCDS Version : 8.4.5

Observation 1950 - L2 Version 3
Chandra X-Ray Center

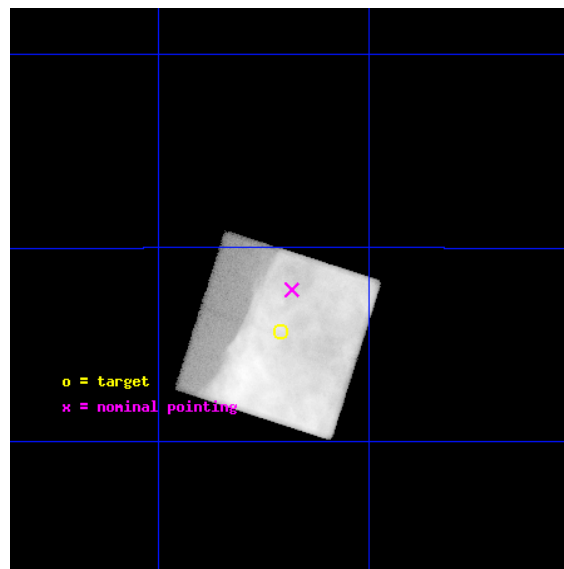
L2 Processing Date : Sep 25 2012

Contents

1	Front	2
2	OBI	3
2.1	OBI	3
2.1.1	Images	3
2.1.2	Bias	3
2.1.3	Parameters	4
2.1.4	Events	4
2.2	Compared Parameters	5
2.3	Aspect	6
2.4	Star Slots	9
2.4.1	Slot 3	9
2.4.2	Slot 4	10
2.4.3	Slot 5	11
2.4.4	Slot 6	12
2.4.5	Slot 7	13
2.5	FID Slots	14
2.5.1	Slot 0	14
2.5.2	Slot 1	15
2.5.3	Slot 2	16
A	Summary	17
A.1	Status	17
A.2	Comments	17

1 Front

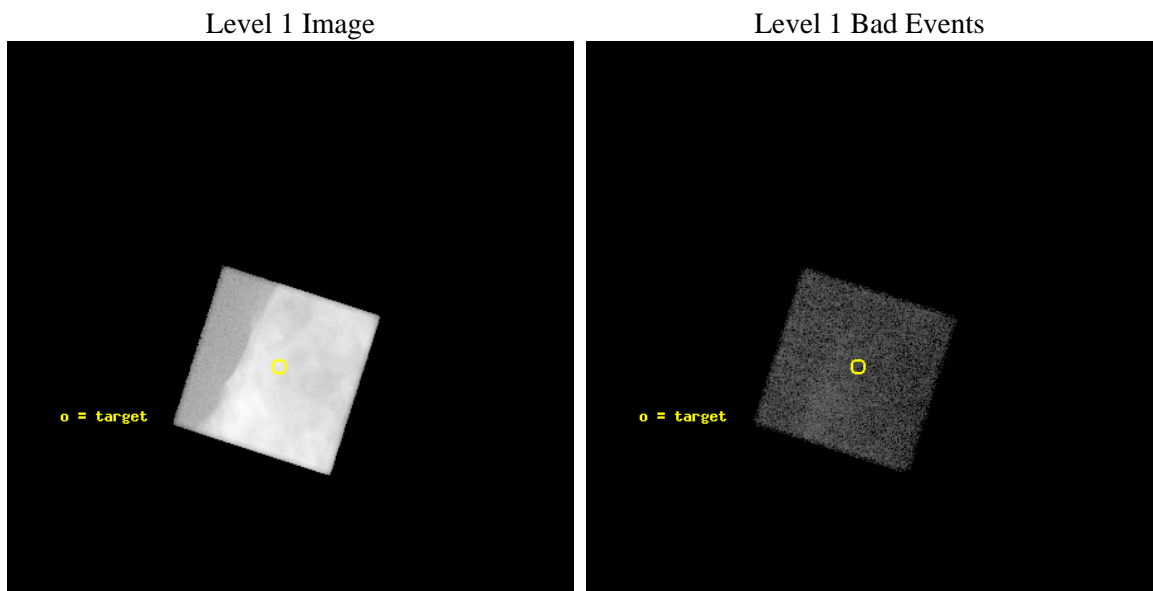
seq_num	500127	Sequence number
obs_id	1950	Observation id
title	EXPLORING SHOCK CONDITIONS IN THE PUPPIS A SNR	Proposal title
observer	Dr Una Hwang	Principal investigator
object	PUPPIS A SHOCK FRONT	Source name
dtcycle	0	
cycle	P	events from which exps? Prim/Second/Both
ra_targ	125.855	Observer's specified target RA [deg]
dec_targ	-42.73925	Observer's specified target Dec [deg]
ra_nom	125.84175562762	Nominal RA [deg]
dec_nom	-42.703064770503	Nominal Dec [deg]
roll_nom	107.76716711323	Nominal Roll [deg]
revision	3	Processing version of data
ontime	15102.0	Sum of GTIs [s]
livetime	14898.192723542	Livetime [s]
ontime7	15102.0	Sum of GTIs [s]
l2events	2267495	Number of level 2 events



2 OBI

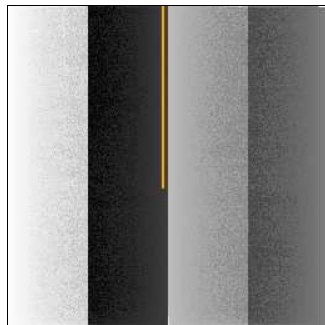
2.1 OBI

2.1.1 Images



2.1.2 Bias

Chip 7



2.1.3 Parameters

obi_num	0	Obi number	sched_exp_time	14967.451000	[s] Scheduled observation exposure time
ascdsver	8.4.5	Processing system revision	ontime	15102.0	Sum of GTIs [s]
caldsver	4.5.1.1	 	ontime7	15102.0	Sum of GTIs [s]
date	2012-09-25T02:35:18	Date and time of file creation	l1events	2416874	Number of level 1 events
revision	3	Processing version of data			

2.1.4 Events

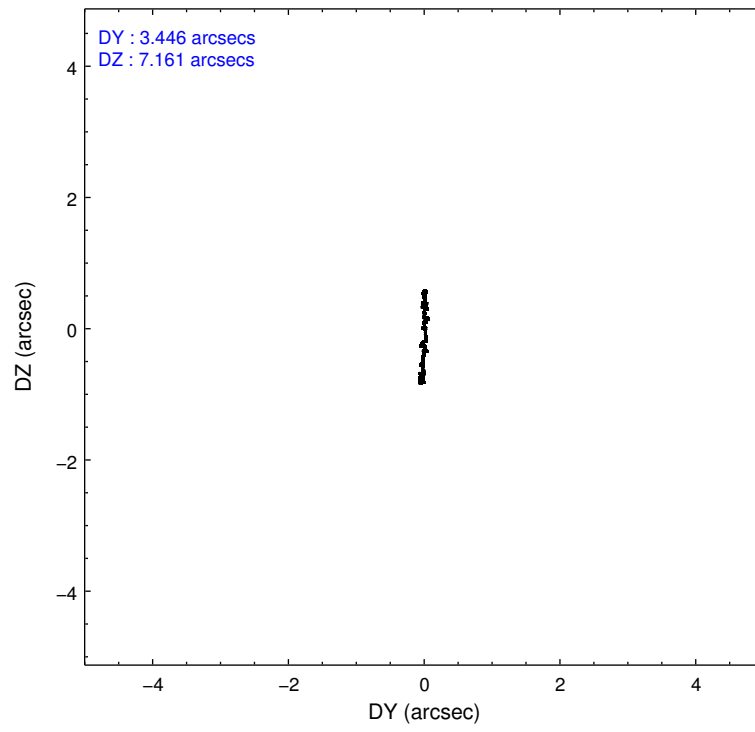
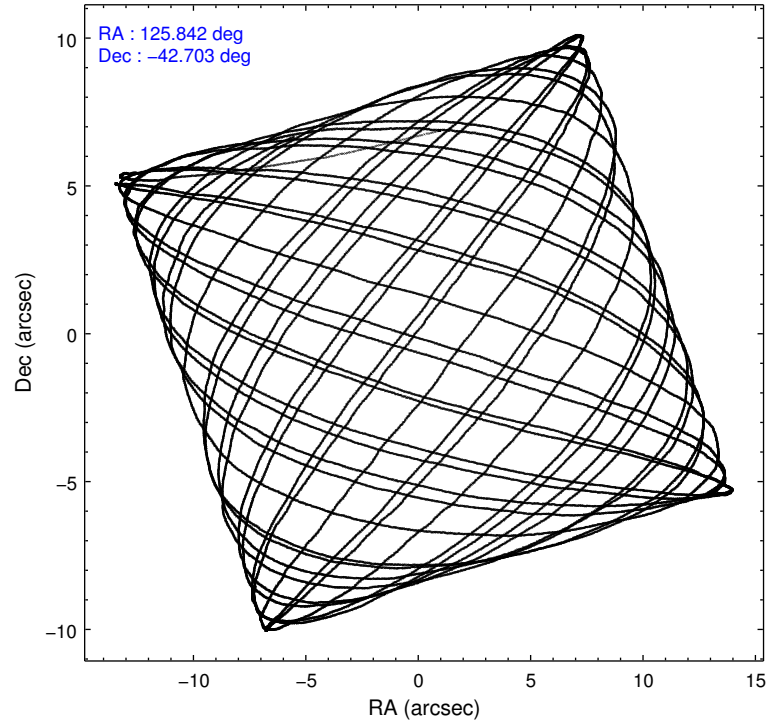
	ccd 7
level 1 events	2416874
rejected events	131650
rejected %	5%

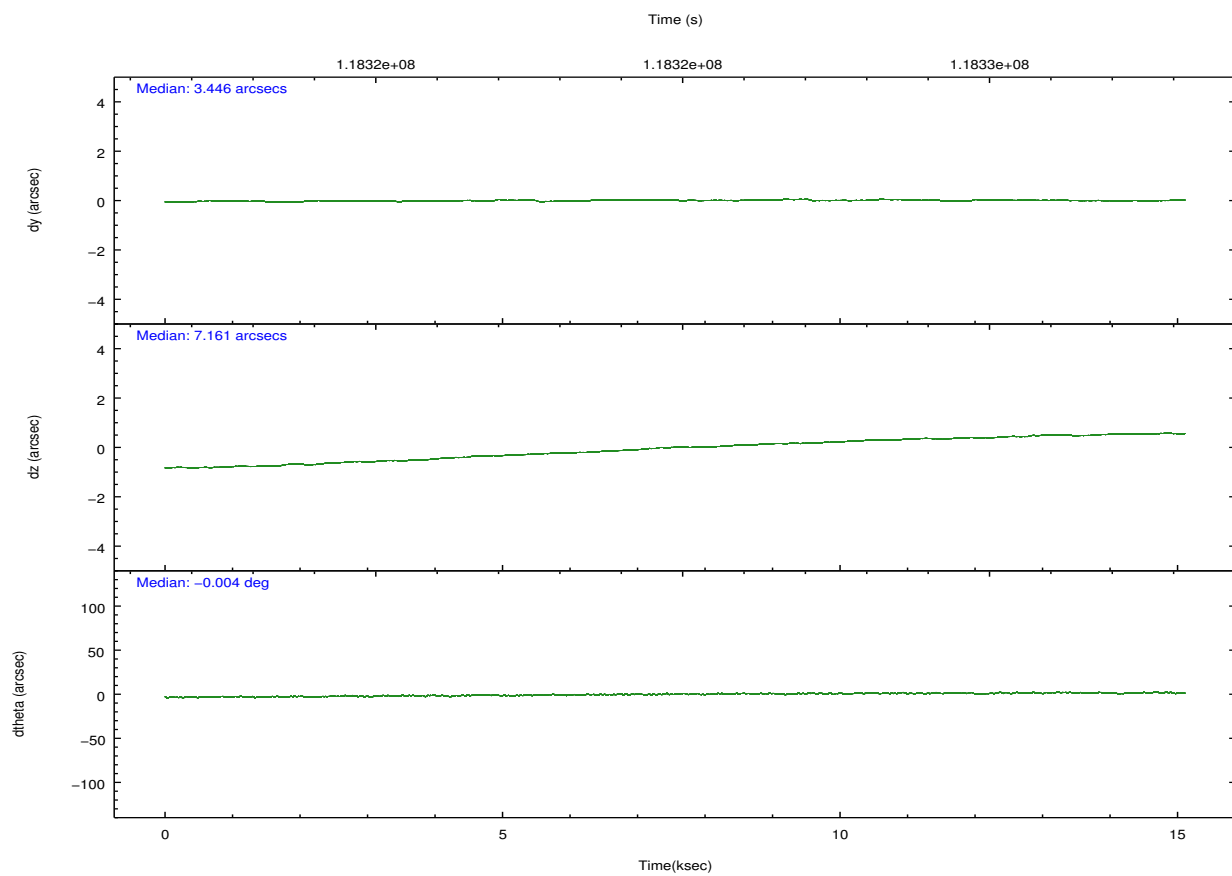
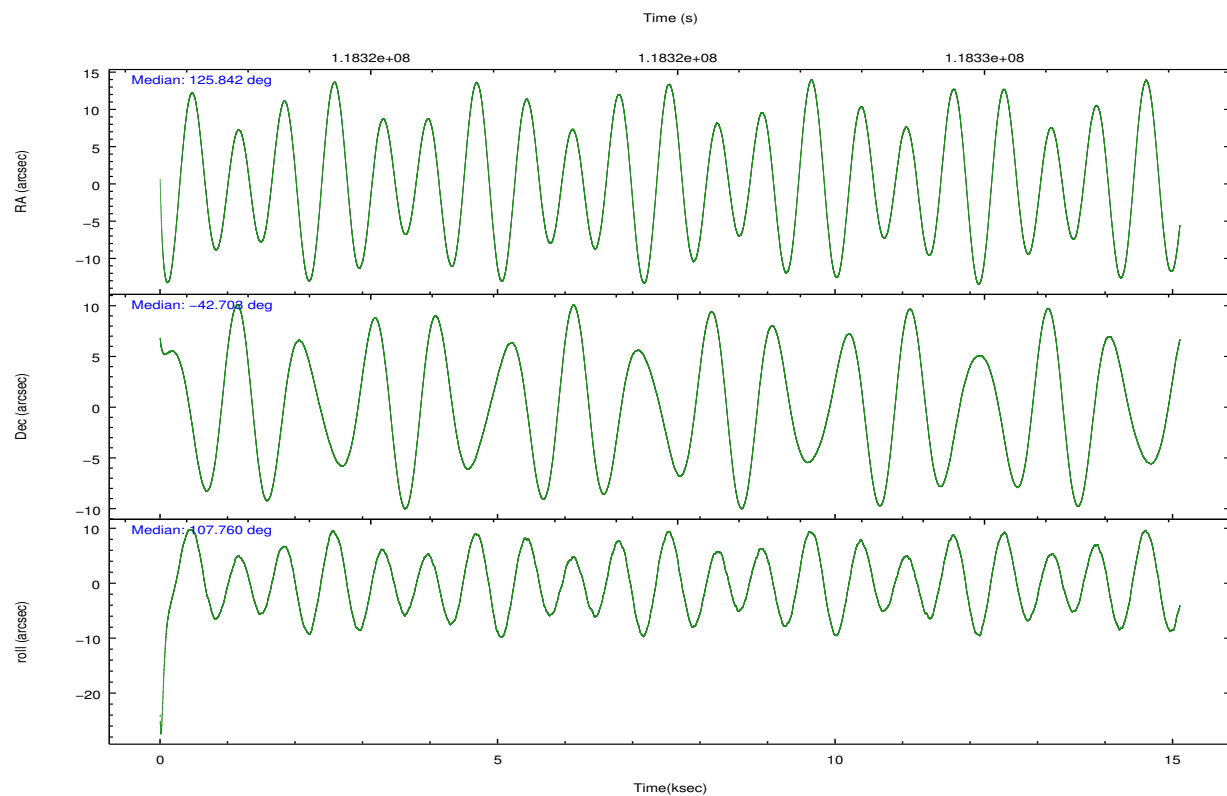
	ccd 7
grade 0 events	721060
	29%
grade 1 events	1754
	0%
grade 2 events	608973
	25%
grade 3 events	272893
	11%
grade 4 events	271385
	11%
grade 5 events	27247
	1%
grade 6 events	447095
	18%
grade 7 events	66467
	2%

2.2 Compared Parameters

Parameter	Planned	Actual	Parameter	Planned	Actual
Instrument	ACIS	ACIS	Obspar format version number	7	7
Detector	ACIS-7	ACIS-7	Obspar file type	PREDICTED	ACTUAL
Grating	NONE	NONE	Obspar update status	NONE	UPDATED
Data mode	FAINT	FAINT	Number of optional ACIS chips dropped	0	0
Observation mode	POINTING	POINTING	On-chip summing requested	N	N
[deg] Pointing RA	125.869550	125.8417556276184	Subarray requested	NONE	NONE
[deg] Pointing Dec	-42.721163	-42.7030647705034	Alternating exposures requested	N	N
[deg] Pointing Roll	107.629422	107.7671671132292	[s] Primary exposure time	0.000000	3
[mm] SIM focus pos	-0.684267	-0.6828225247311905			
[mm] SIM defocus	0	0.001444936568705701			
[mm] SIM translation stage pos	-190.132523	-190.1400660498719			
[mm] SIM translation stage offset	0	0.00754346686406393			
[s] Observation start time (MET)	118317462.184000	118316394.82109			
Observation start date	2001-10-01T09:56:38	2001-10-01T09:39:54			
[s] Observation end time (MET)	118332429.184000	118332744.08424			
Observation end date	2001-10-01T14:06:05	2001-10-01T14:12:24			
Read mode	TIMED	TIMED			

2.3 Aspect



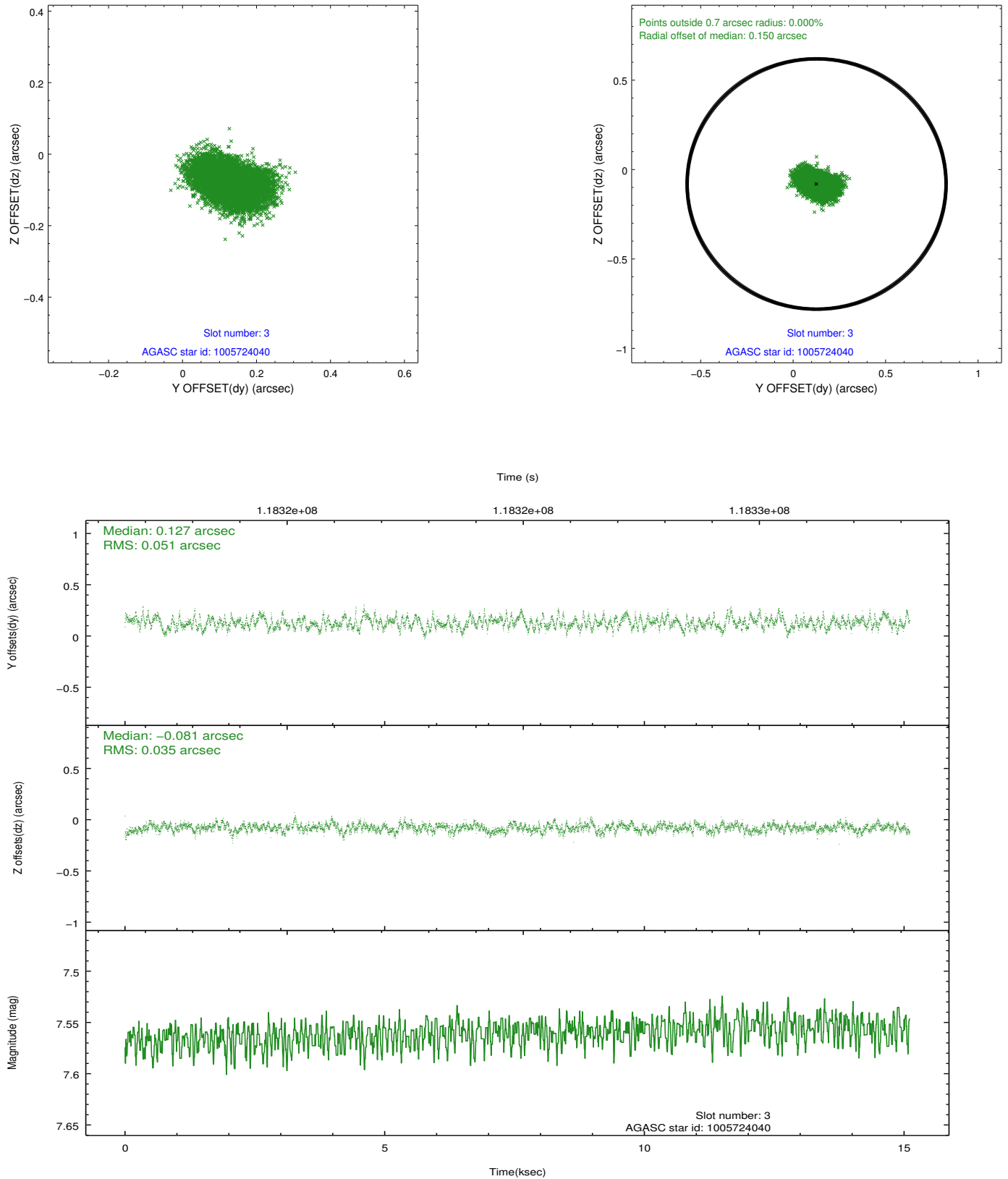


Slot Statistics

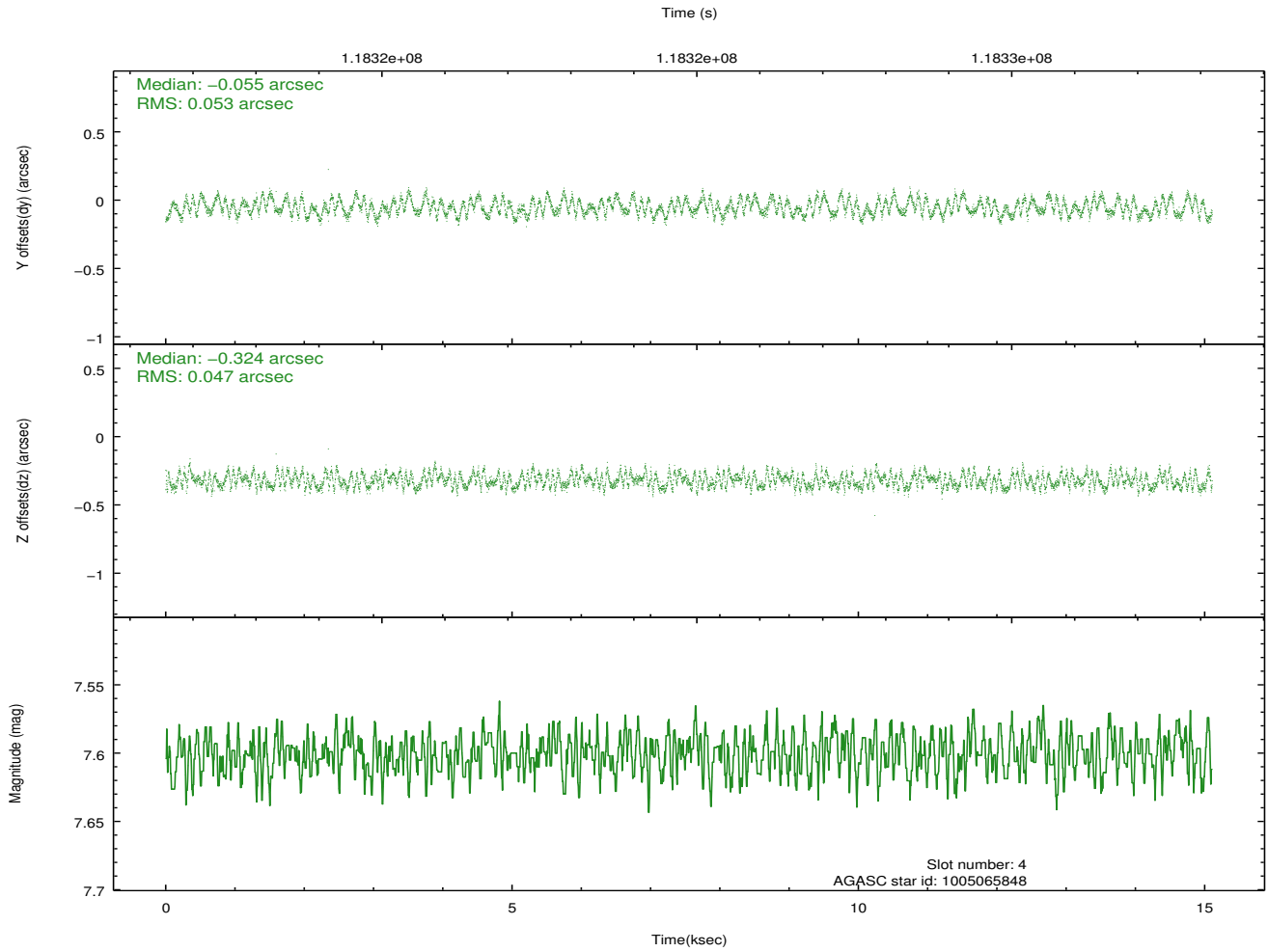
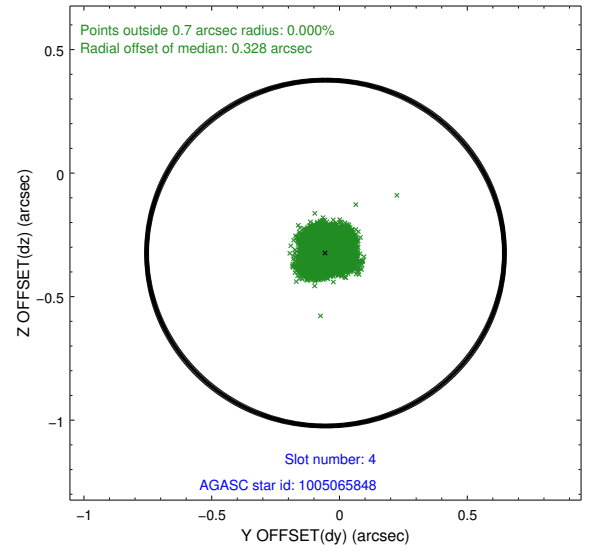
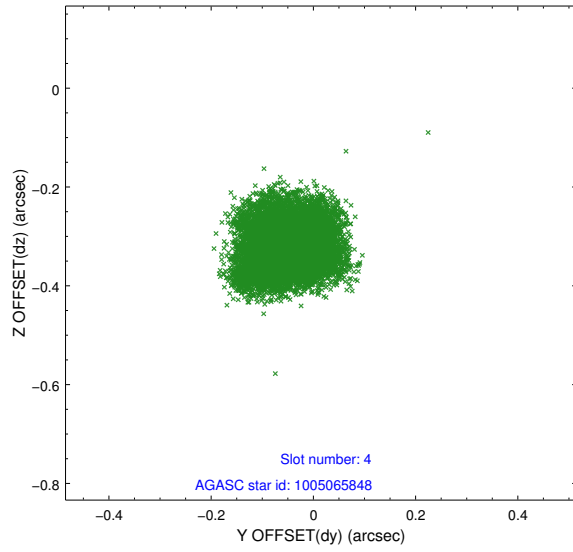
slot	status	id	mag	n_pts	med_dy	med_dz	dr1	dr2	ra	dec	mean_y	mean_z
0	FID	ACIS-S-2	7.12	3685	-0.008	-0.000	0.014	0.022	0.000000	0.000000	-756.10	-1728.26
1	FID	ACIS-S-4	7.20	3685	-0.025	0.004	0.010	0.019	0.000000	0.000000	2157.02	179.94
2	FID	ACIS-S-5	7.24	3685	0.003	0.005	0.012	0.019	0.000000	0.000000	-1808.55	173.93
3	GUIDE	1005724040	7.56	7354	0.127	-0.081	0.064	0.108	125.738175	-43.227880	-1634.05	881.26
4	GUIDE	1005065848	7.60	7371	-0.055	-0.324	0.078	0.114	124.947854	-42.722303	721.49	2328.83
5	GUIDE	1005216672	7.95	7370	-0.002	0.094	0.079	0.125	125.948907	-42.033869	2294.23	-950.35
6	GUIDE	1005201896	8.51	7370	-0.065	0.237	0.062	0.102	126.670468	-42.695868	-563.77	-2043.54
7	GUIDE	1005214576	9.13	7366	-0.006	0.079	0.109	0.174	126.219793	-42.037512	2060.60	-1636.74

2.4 Star Slots

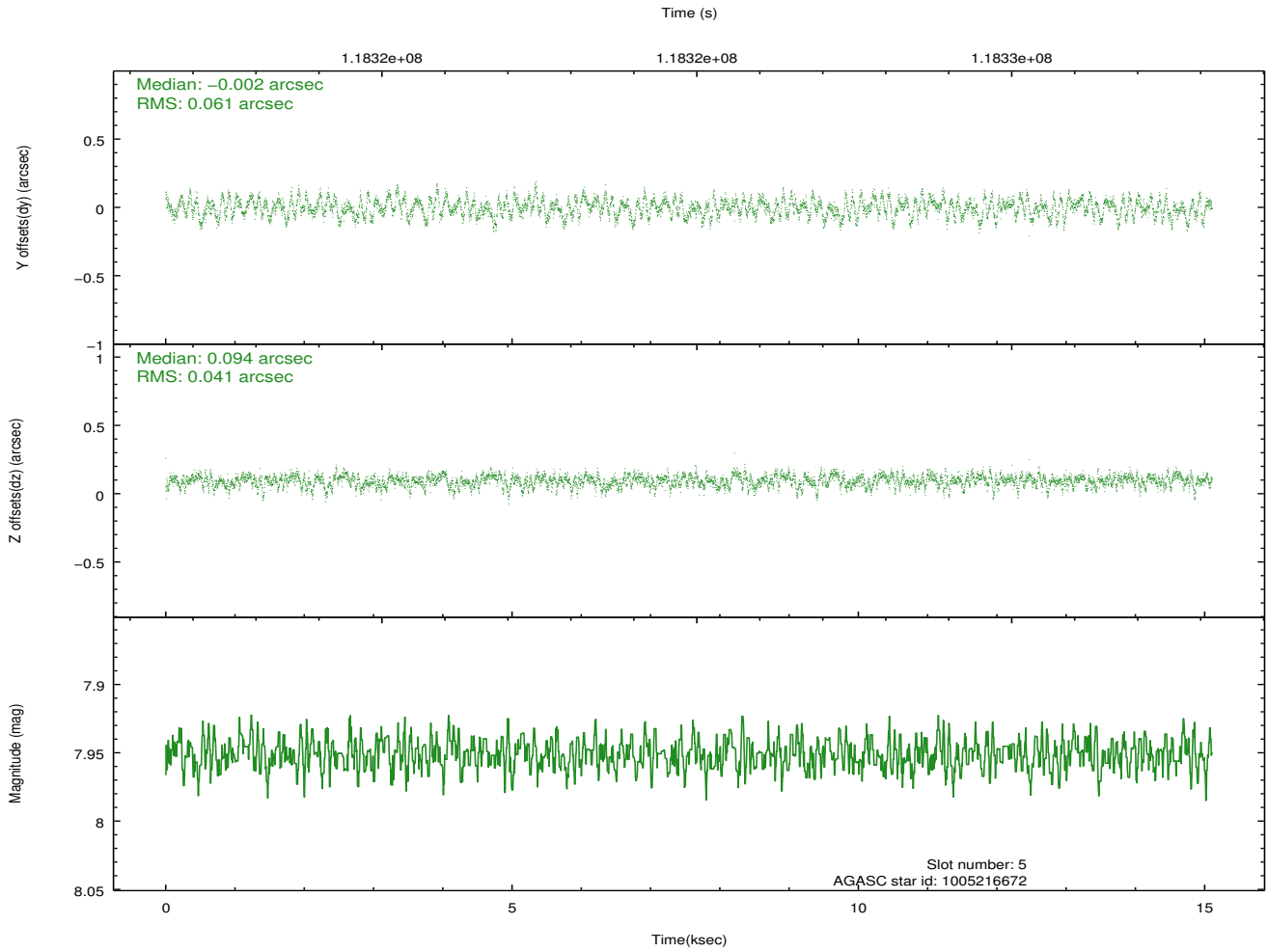
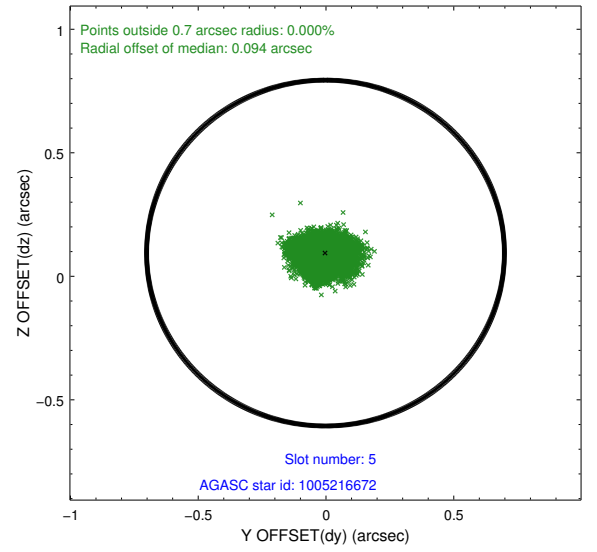
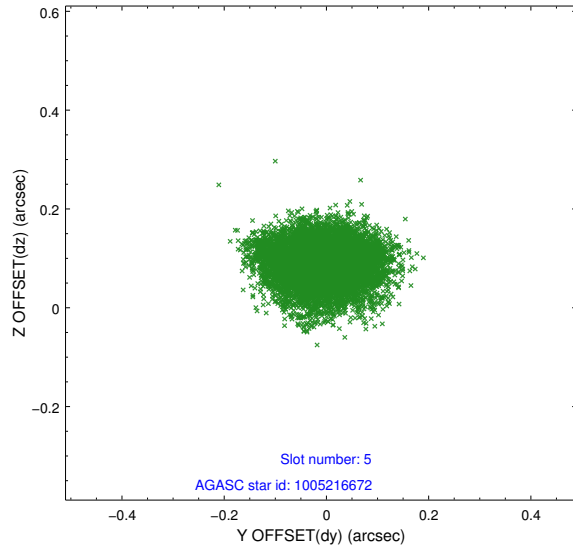
2.4.1 Slot 3



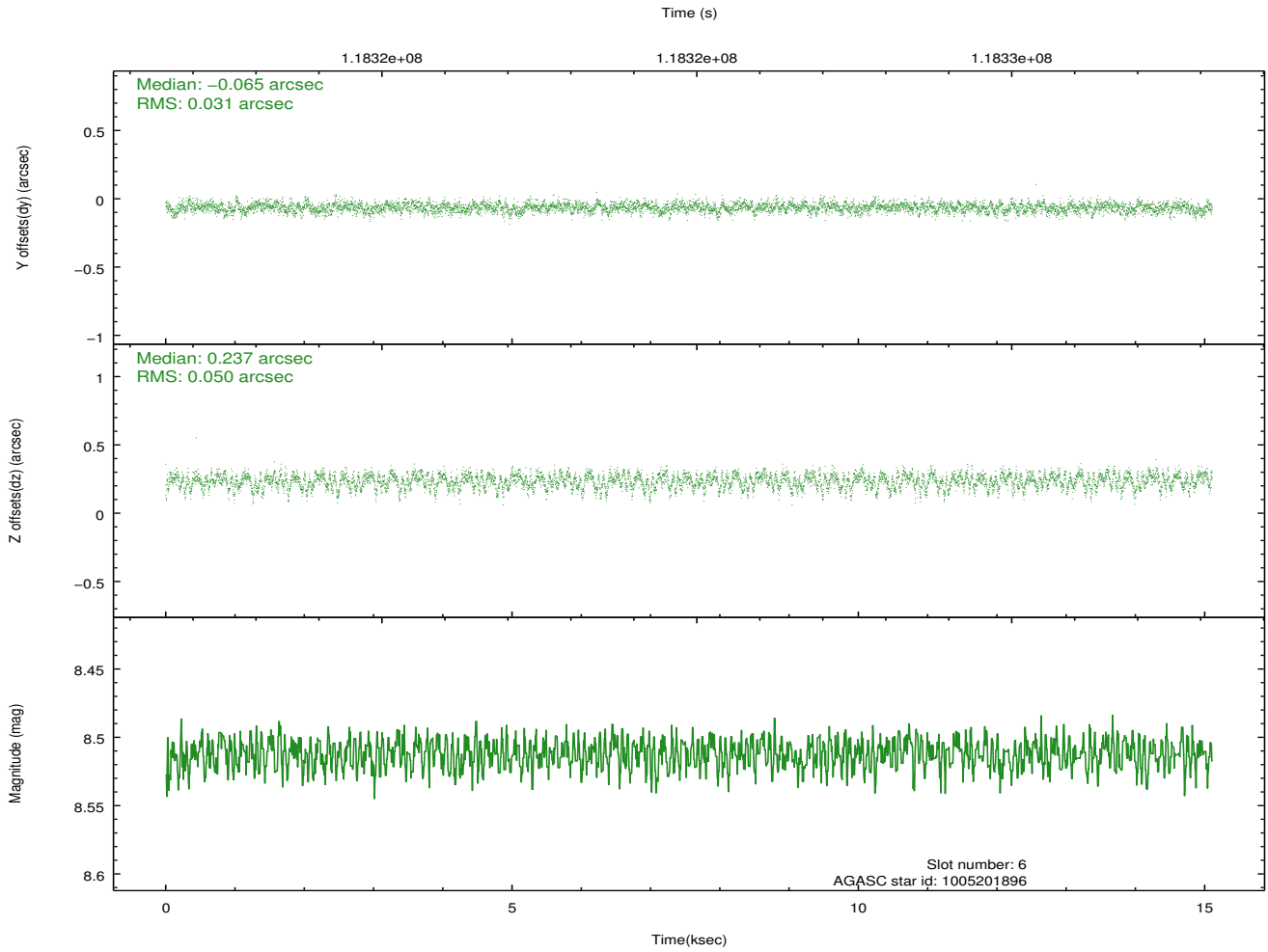
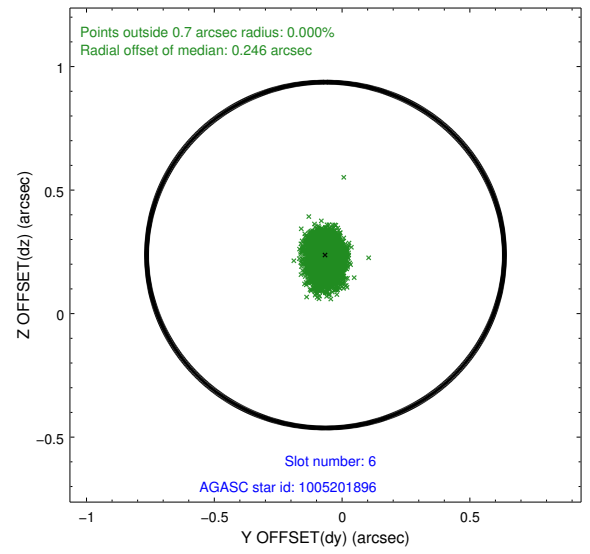
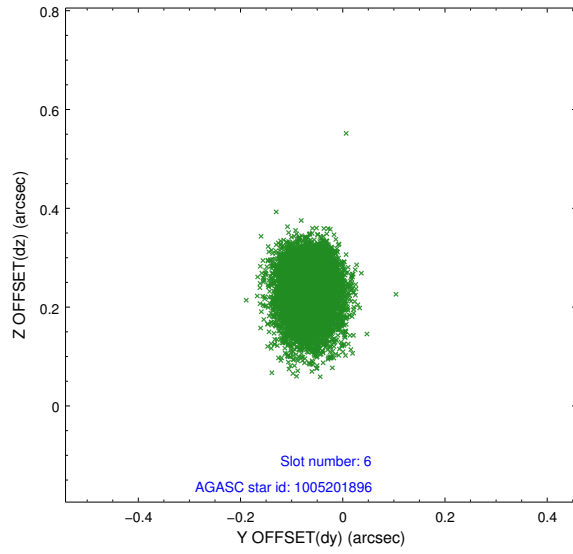
2.4.2 Slot 4



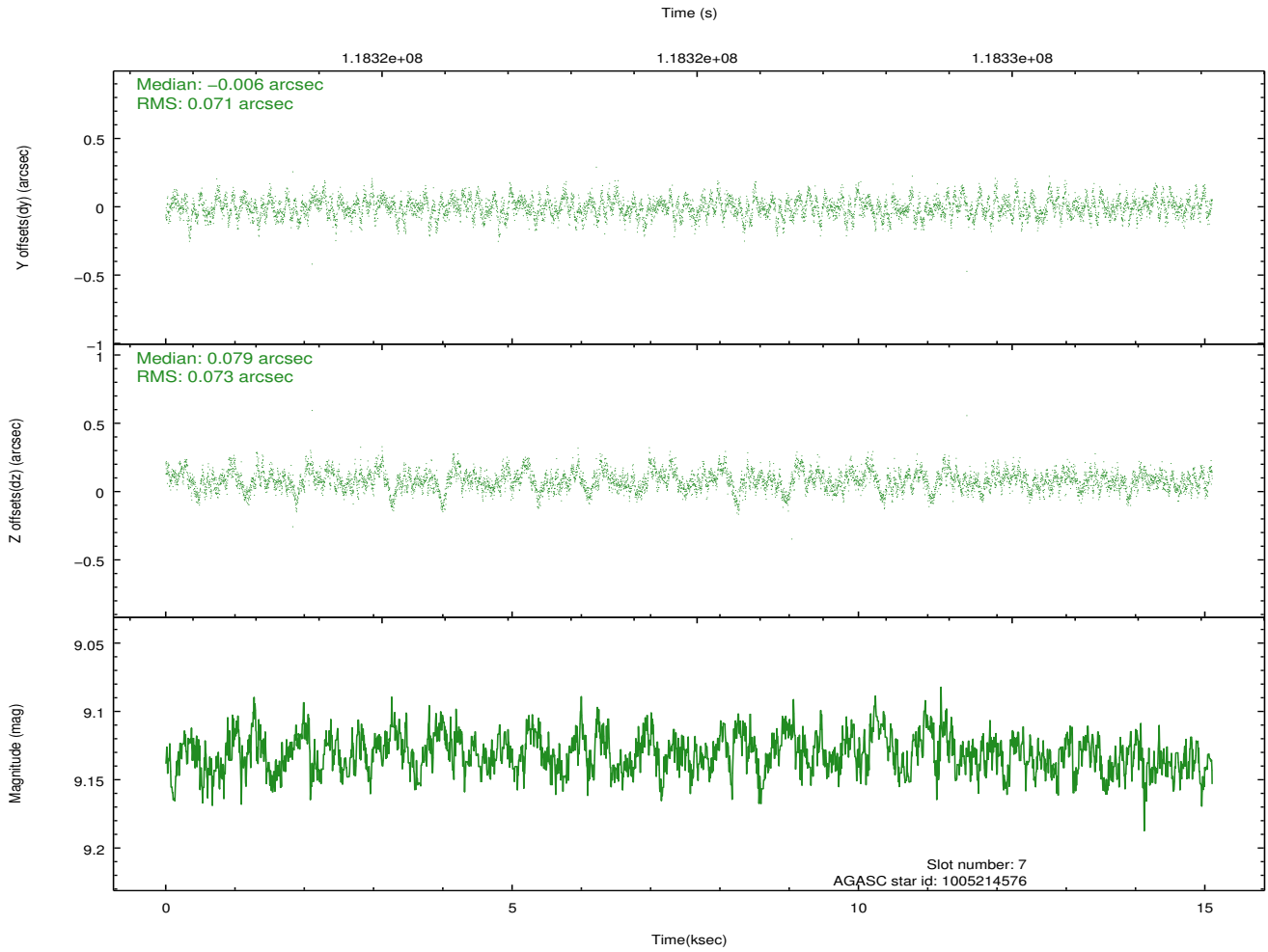
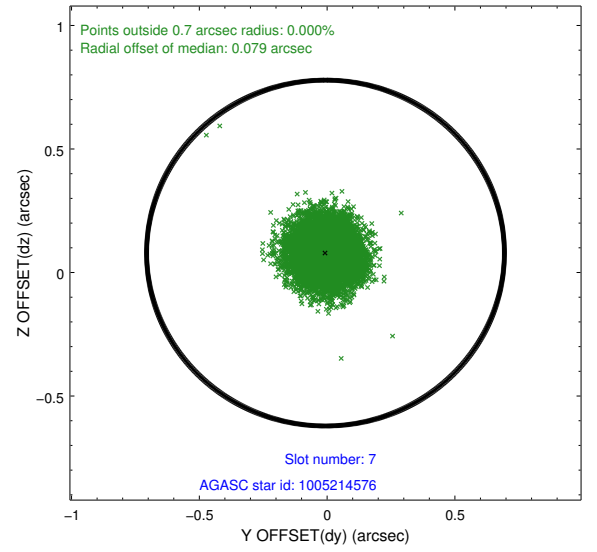
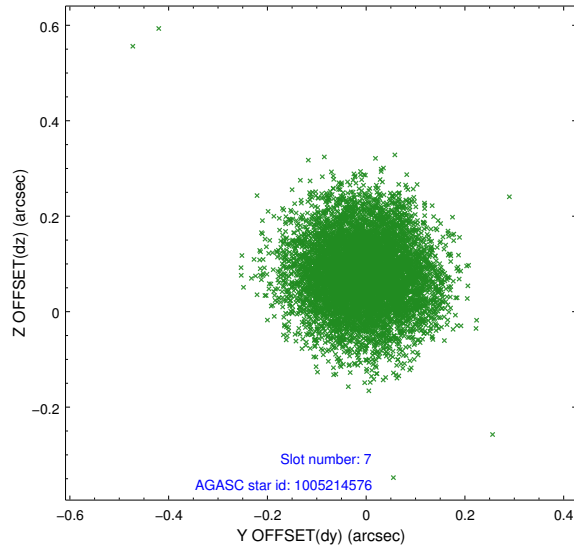
2.4.3 Slot 5



2.4.4 Slot 6

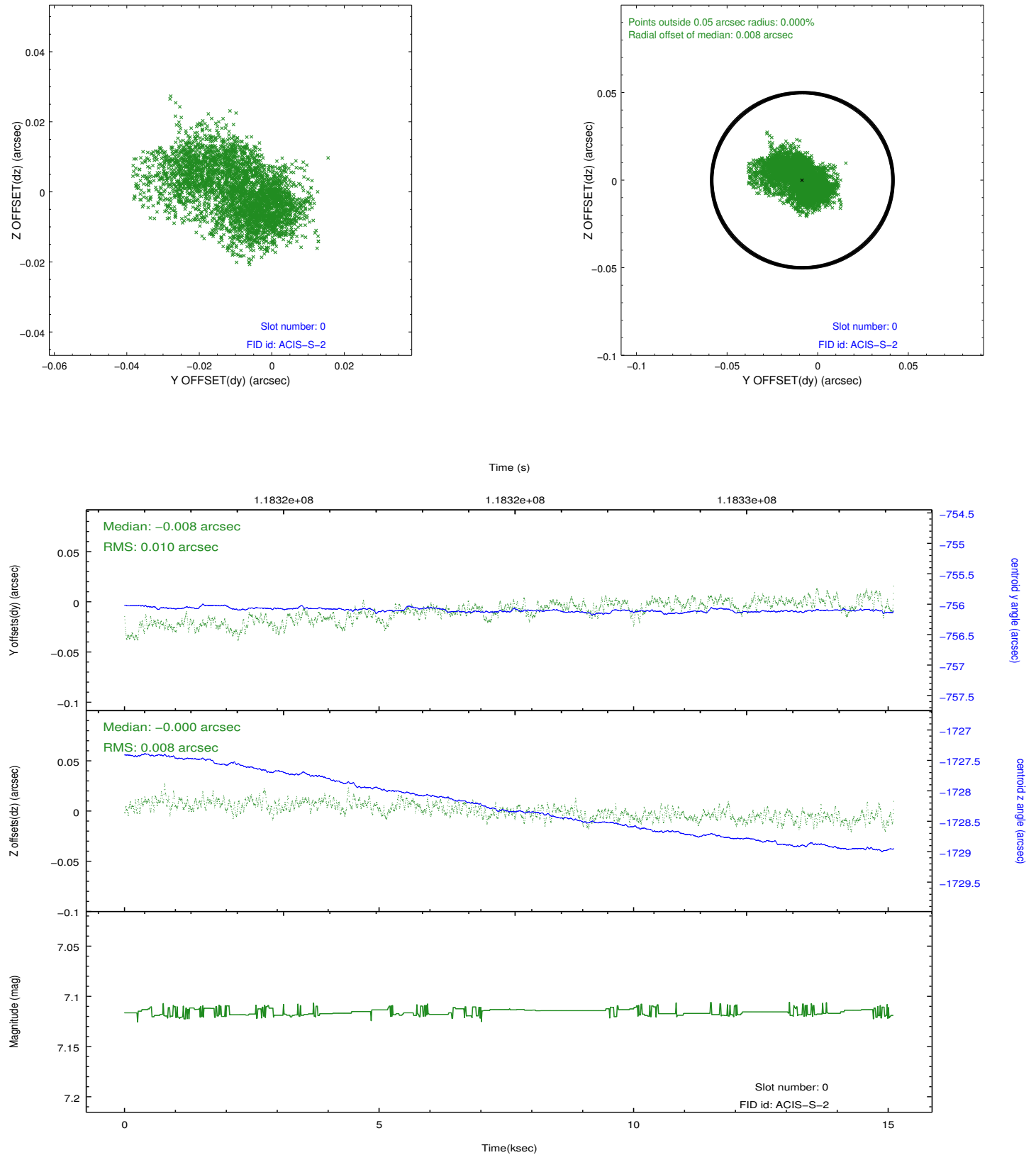


2.4.5 Slot 7

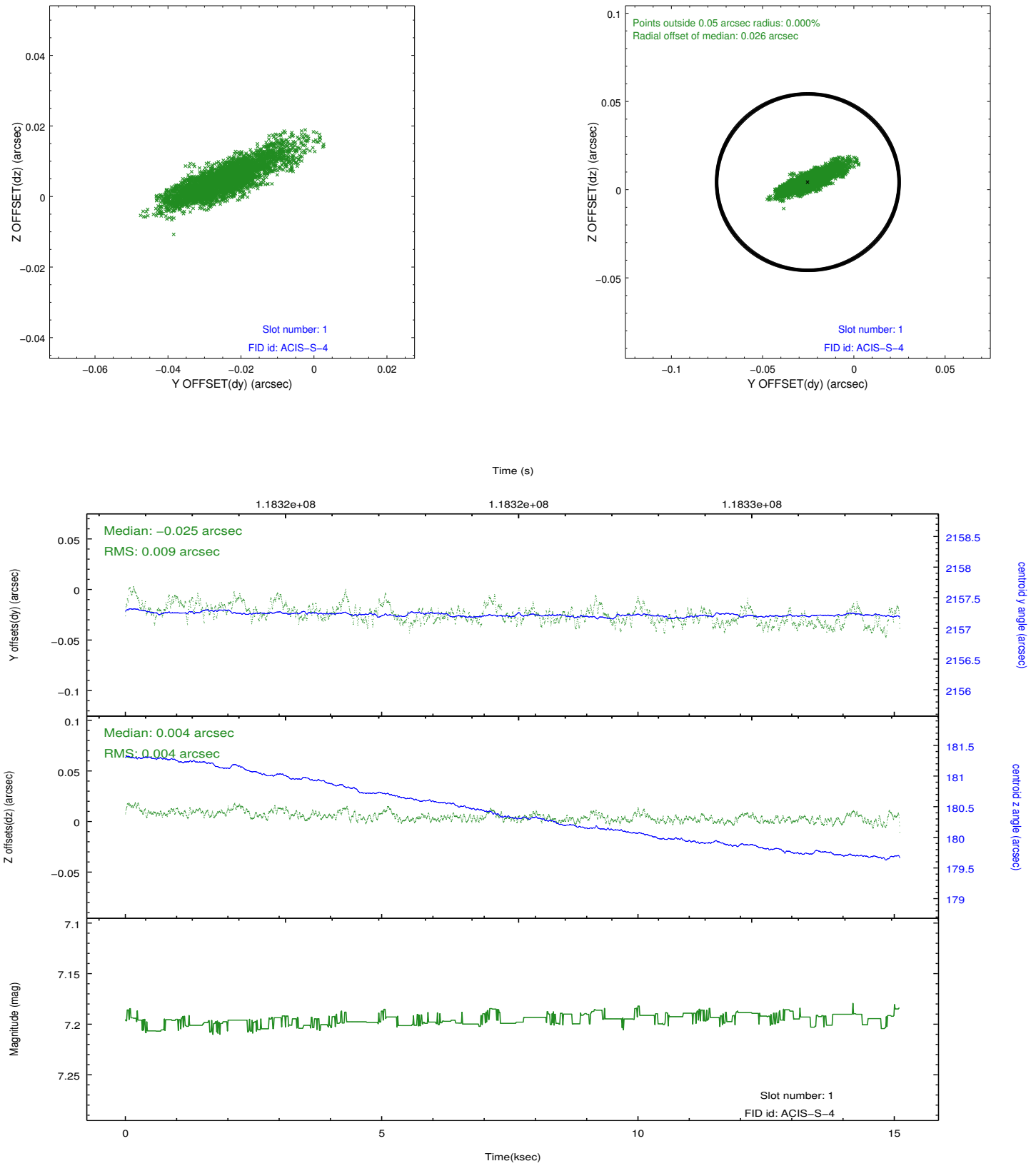


2.5 FID Slots

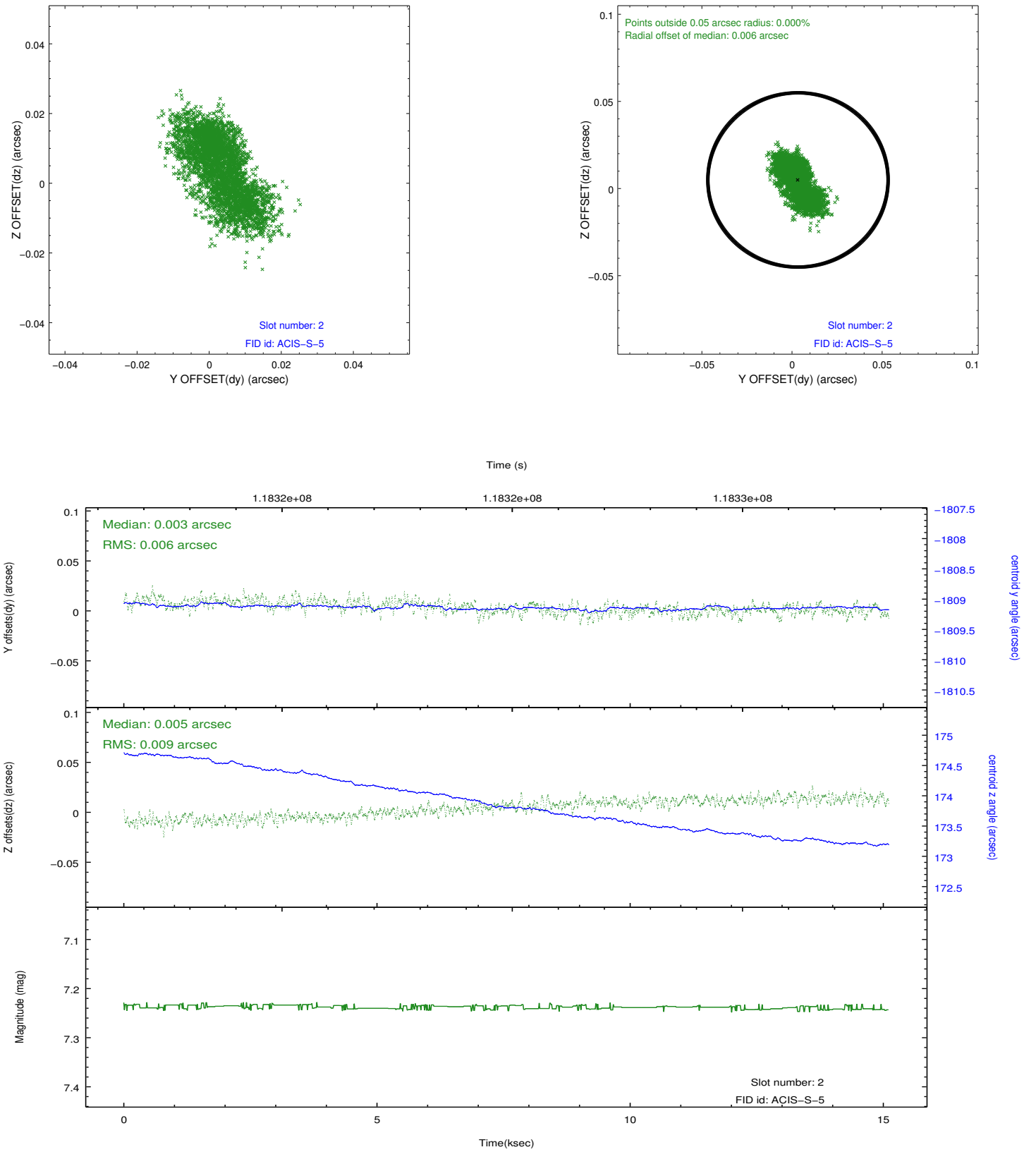
2.5.1 Slot 0



2.5.2 Slot 1



2.5.3 Slot 2



A Summary

A.1 Status

V&V Scientist	Jen Lauer
V&V Date (YYYY-MM-DD)	2012.09.27
V&V Edition	1
V&V Disposition and Status	OK
V&V Charge Time	15.102

A.2 Comments