

# V&V Reference Report

## L2 ASCDS Version : 7.6.10

Observation 1880 - L2 Version 001  
Chandra X-Ray Center

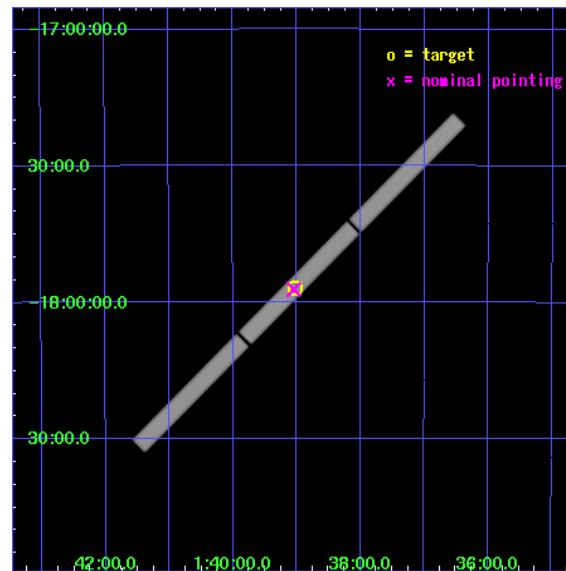
L2 Processing Date : Jan 20 2007

## Contents

<b>1</b>	<b>Front</b>	<b>2</b>
<b>2</b>	<b>OBI</b>	<b>3</b>
2.1	OBI . . . . .	3
2.1.1	Images . . . . .	3
2.1.2	Parameters . . . . .	4
2.1.3	Events . . . . .	4
2.2	Compared Parameters . . . . .	5
2.3	Aspect . . . . .	6
2.4	Star Slots . . . . .	9
2.4.1	Slot 3 . . . . .	9
2.4.2	Slot 4 . . . . .	10
2.4.3	Slot 5 . . . . .	11
2.4.4	Slot 6 . . . . .	12
2.4.5	Slot 7 . . . . .	13
2.5	FID Slots . . . . .	14
2.5.1	Slot 0 . . . . .	14
2.5.2	Slot 1 . . . . .	15
2.5.3	Slot 2 . . . . .	16
<b>3</b>	<b>Gratings</b>	<b>17</b>
3.1	LETG Arm . . . . .	17
<b>A</b>	<b>Summary</b>	<b>19</b>
A.1	Status . . . . .	19
A.2	Comments . . . . .	19

# 1 Front

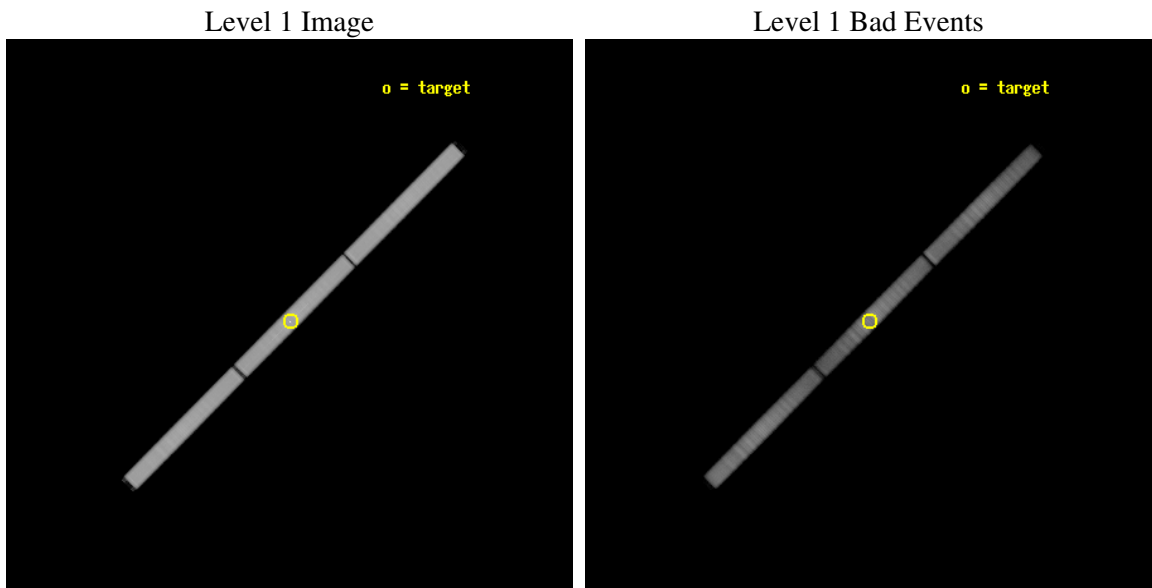
seq_num	200108
obs_id	1880
title	FLARE ACTIVITY AND CORONAL HEATING ON THE ACTIVE FLARE STAR BINARY UV CETI
observer	Prof Marc Audard
object	UV CETI, GLIESE 65
ra_targ	24.757833
dec_targ	-17.950233
ra_nom	24.76122865736
dec_nom	-17.953682405874
roll_nom	314.82981467493
revision	2
ontime	74921.352997094
livetime	74499.183872874
l2events	3118648



## 2 OBI

### 2.1 OBI

#### 2.1.1 Images



### 2.1.2 Parameters

obi_num	3
ascdsver	7.6.10
caldbver	3.3.0
date	2007-01-20T12:42:58
revision	2

sched_exp_time	75000.000000
ontime	74921.352997094
l1events	4695584

### 2.1.3 Events

Level 1 Events

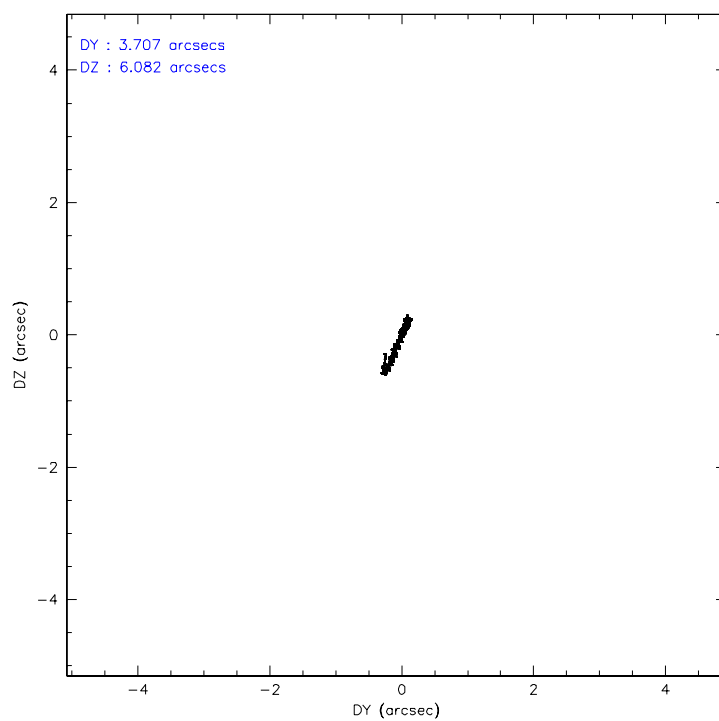
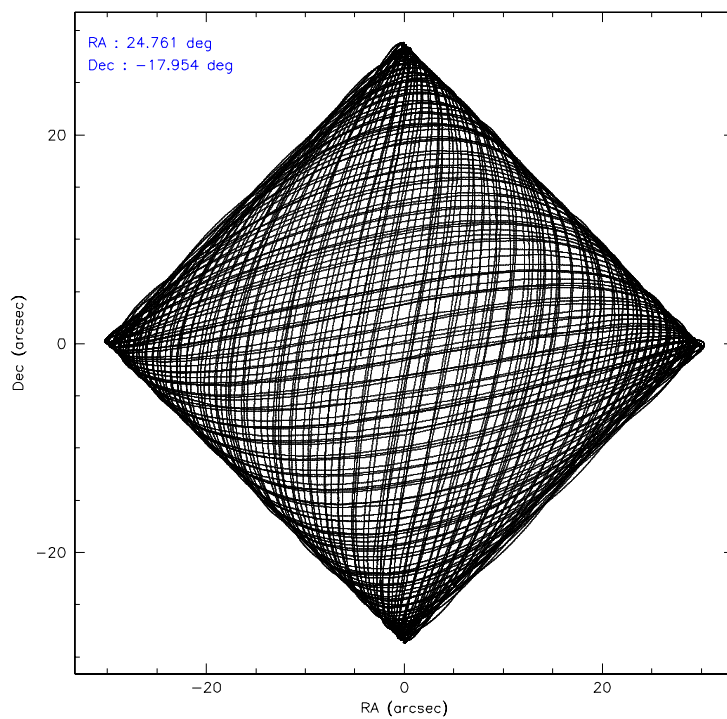
	<b>segment 1</b>	<b>segment 2</b>	<b>segment 3</b>
level 1 events	1578063	1548404	1569117
rejected events	343597	370063	420251
rejected %	21%	23%	26%

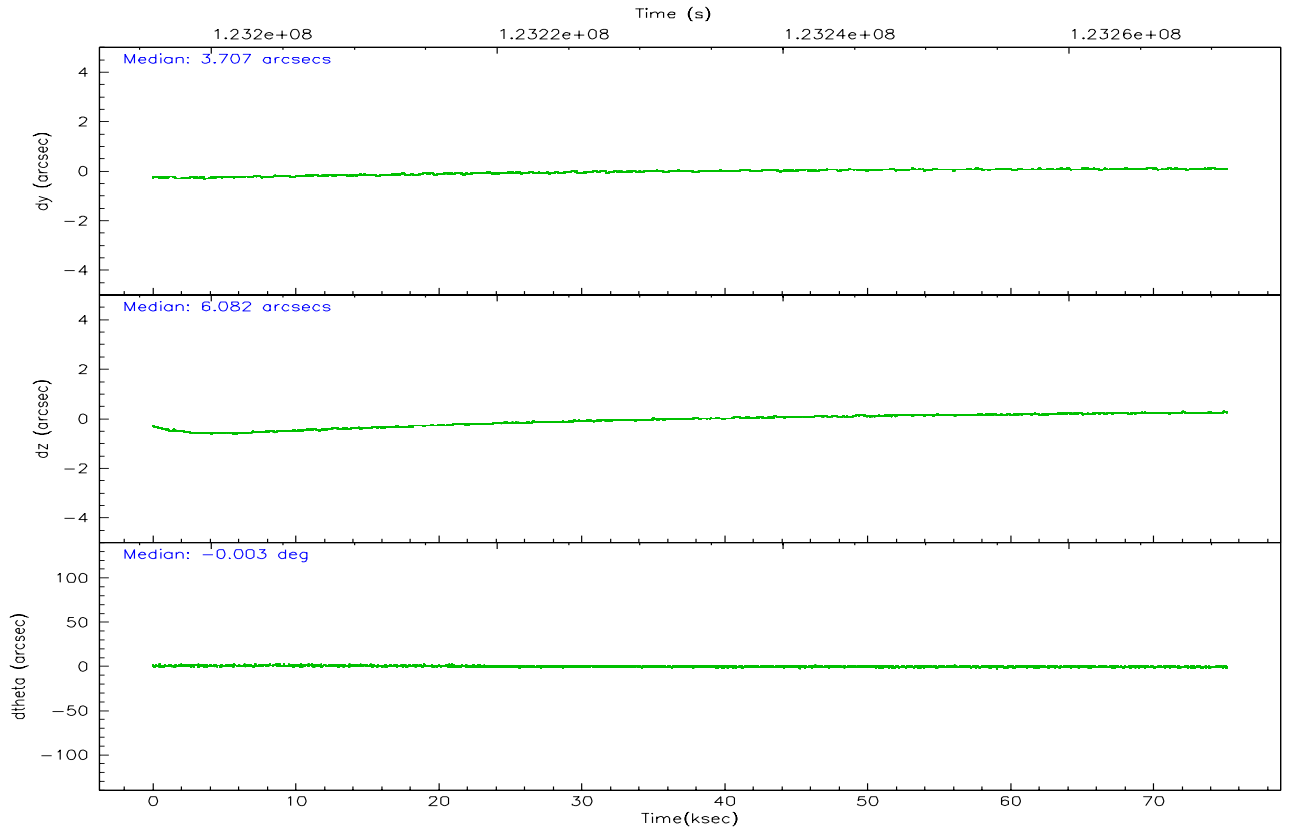
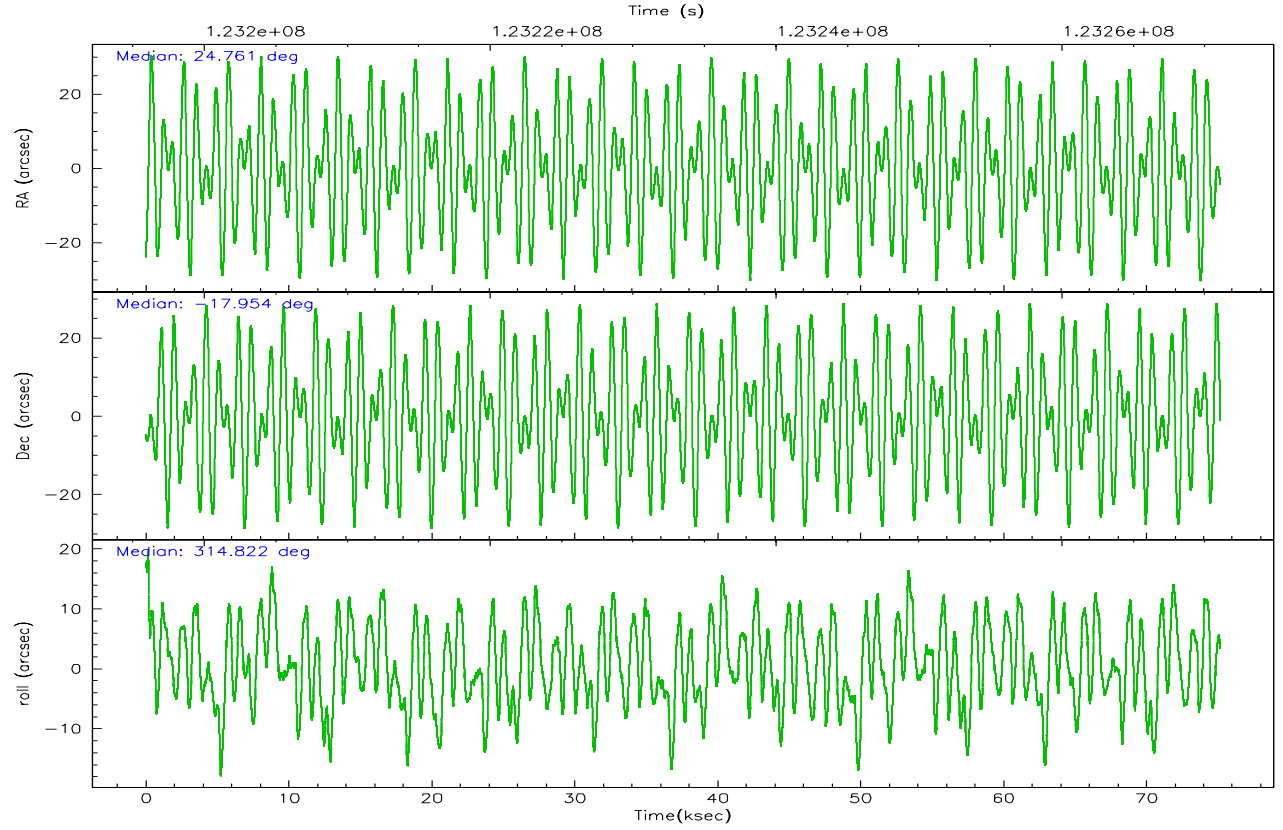


## 2.2 Compared Parameters

Parameter	Planned	Actual	Parameter	Planned	Actual
Instrument	HRC	HRC	Obspar format version number	6	6
Detector	HRC-S	HRC-S	Obspar file type	PREDICTED	ACTUAL
Grating	LETG	LETG	Obspar update status	NONE	UPDATED
Data mode	OBSERVING	OBSERVING			
Observation mode	POINTING	POINTING			
Pointing RA	24.731830	24.76122865736045			
Pointing Dec	-17.947541	-17.95368240587418			
Pointing Roll	314.753421	314.8298146749287			
SIM focus pos (mm)	-1.429586	-1.428180813131781			
SIM defocus (mm)	0.1037507710433287	0.1051558262725154			
SIM translation stage pos (mm)	250.455976	250.466033080201			
SIM translation stage offset (mm)	0	-0.01005468664627074			
Observation start time	123196081.184000	123195339.15274			
Observation start date	2001-11-26T21:06:57	2001-11-26T20:55:39			
Observation end time	123271081.184000	123271767.7683			
Observation end date	2001-11-27T17:56:57	2001-11-27T18:09:27			

## 2.3 Aspect



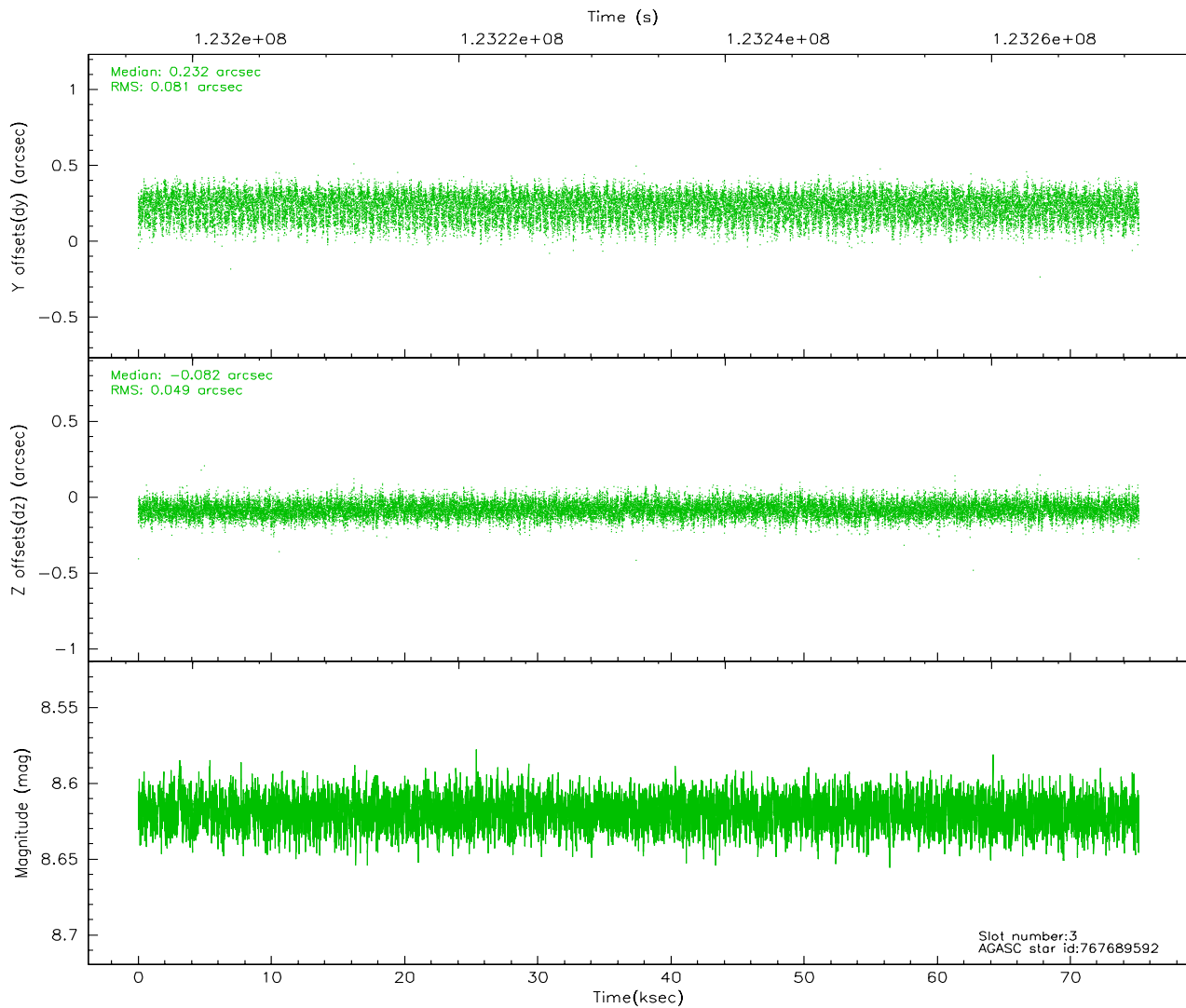
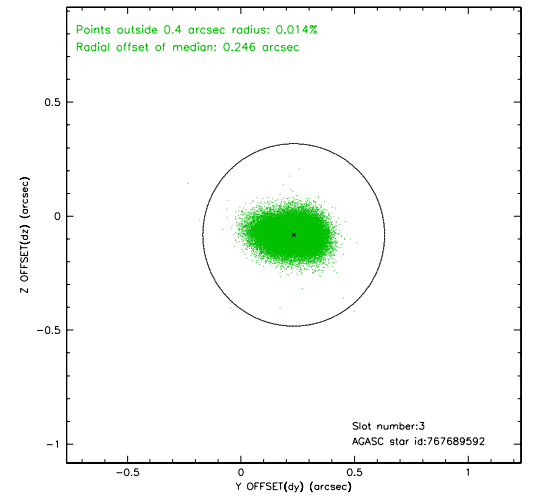
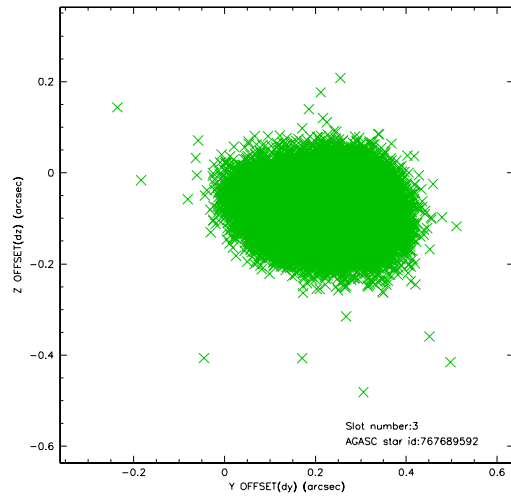


### Slot Statistics

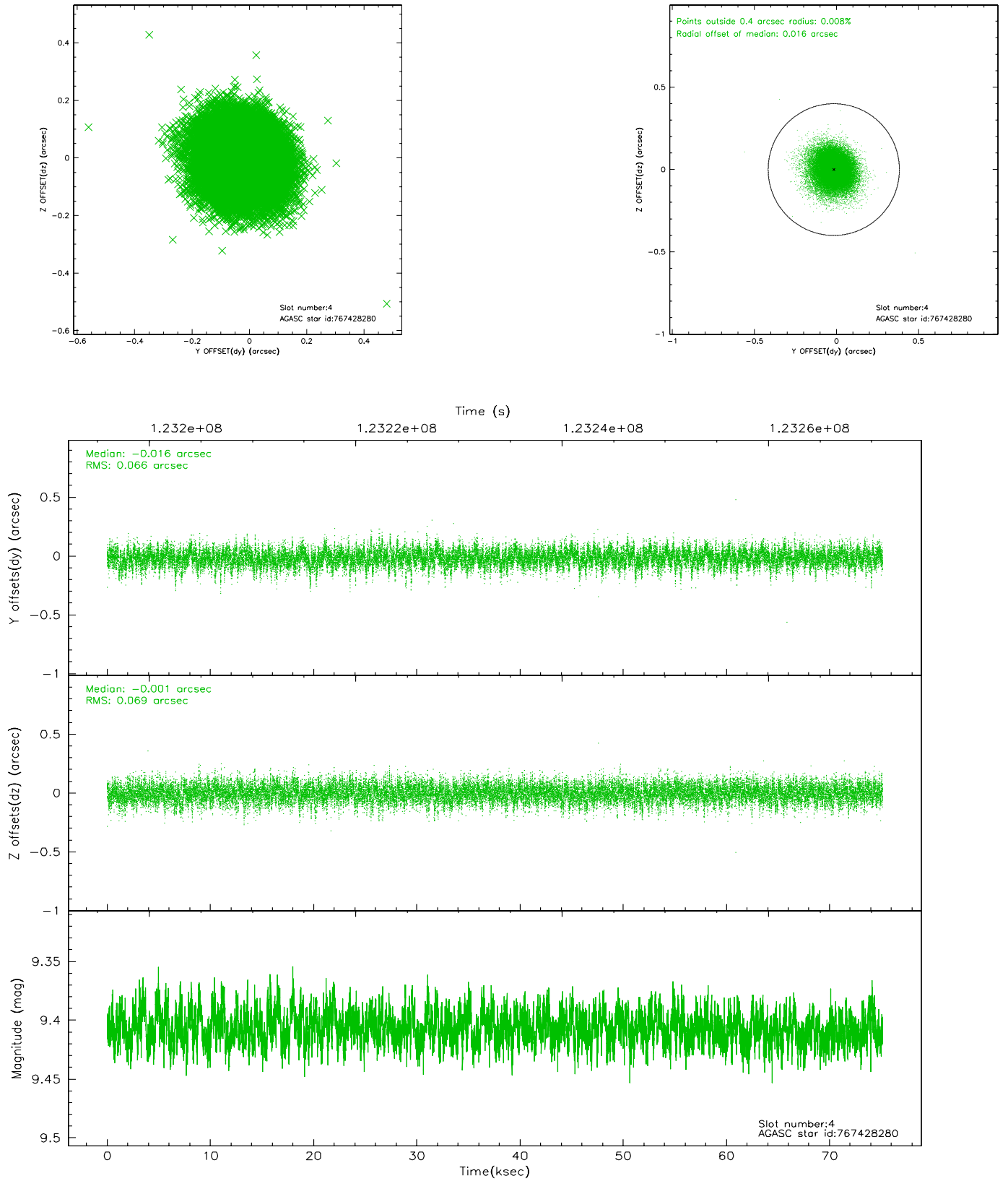
slot	status	id	mag	n_pts	med_dy	med_dz	dr1	dr2	ra	dec	mean_y	mean_z
0	FID	HRC-S-1	6.98	18327	0.159	-0.139	0.010	0.016	0.000000	0.000000	-1157.72	-454.55
1	FID	HRC-S-2	6.98	18331	0.082	-0.092	0.005	0.009	0.000000	0.000000	1241.83	-447.17
2	FID	HRC-S-3	7.00	18331	0.150	-0.071	0.011	0.018	0.000000	0.000000	-1160.37	575.03
3	GUIDE	767689592	8.62	36656	0.232	-0.082	0.101	0.161	24.819548	-18.800627	2391.62	-1950.05
4	GUIDE	767428280	9.41	36653	-0.016	-0.001	0.100	0.168	24.357216	-17.894156	-1039.37	-777.39
5	GUIDE	767428272	9.55	36561	0.035	0.106	0.108	0.179	24.808893	-17.599727	-703.26	1069.16
6	GUIDE	767038784	9.79	36652	-0.151	-0.108	0.126	0.218	23.994808	-18.079533	-1435.08	-2129.73
7	GUIDE	767427592	9.97	36566	-0.101	0.094	0.158	0.265	24.830140	-17.251334	-1542.61	2004.30

## 2.4 Star Slots

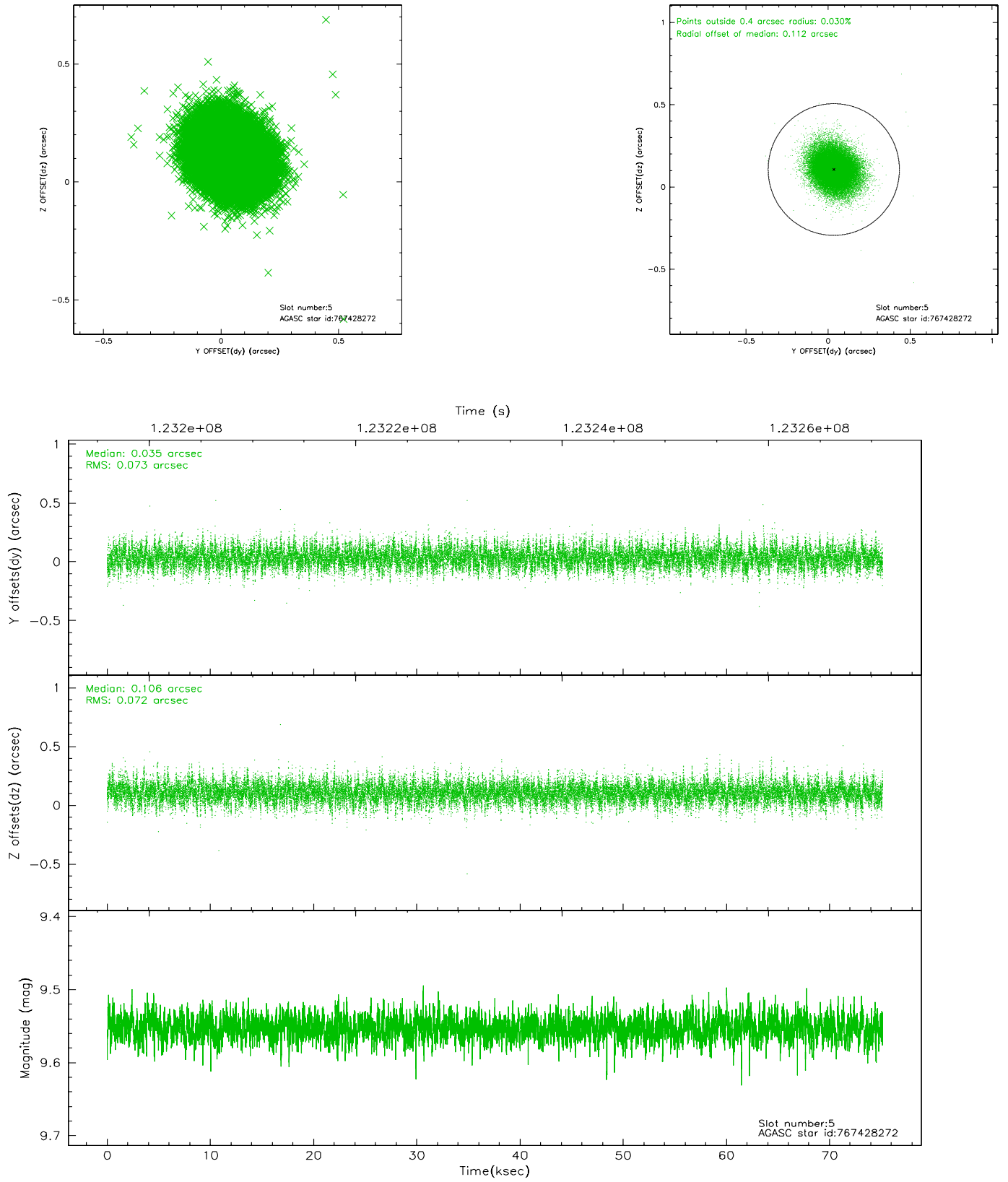
### 2.4.1 Slot 3



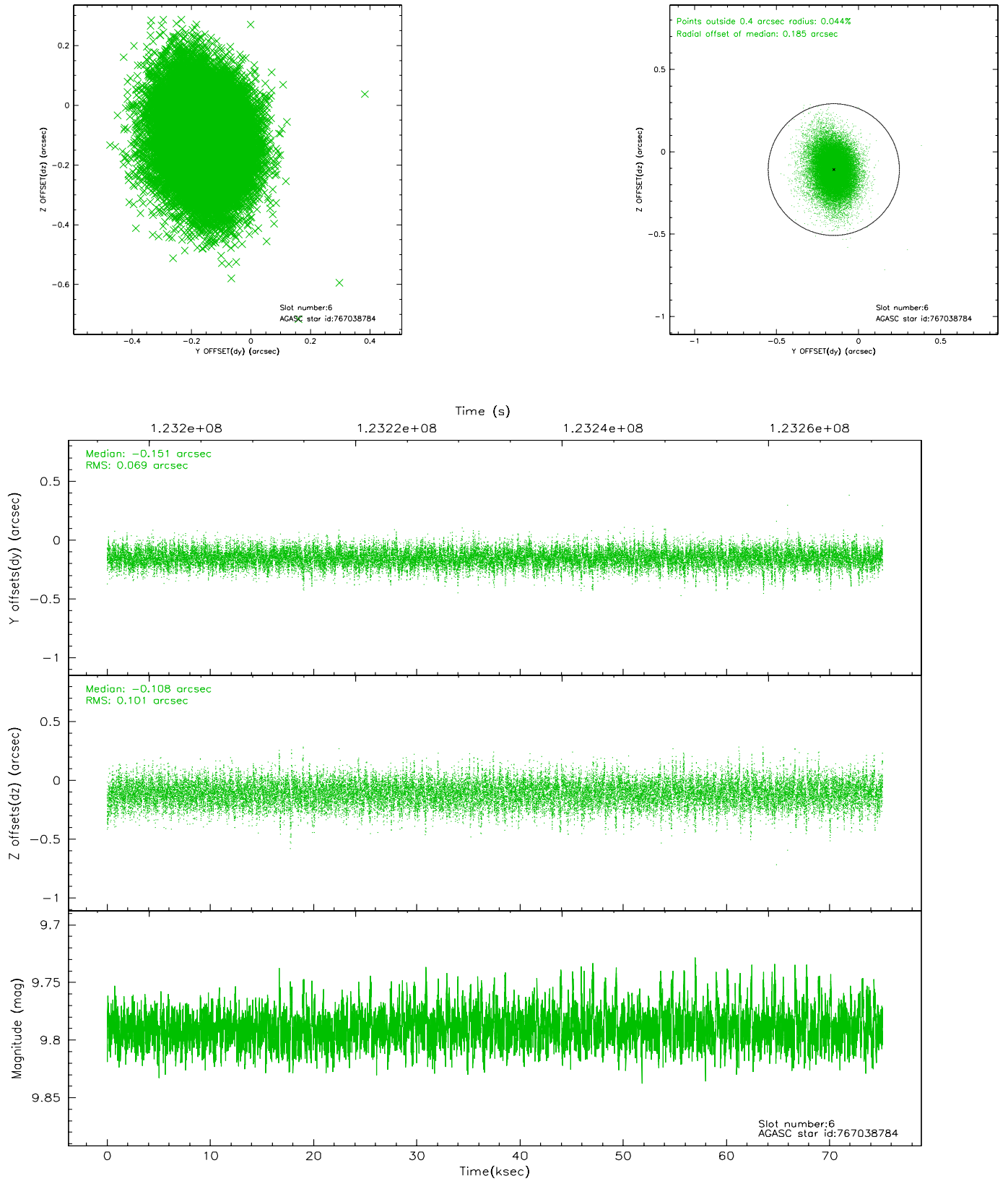
## 2.4.2 Slot 4



### 2.4.3 Slot 5

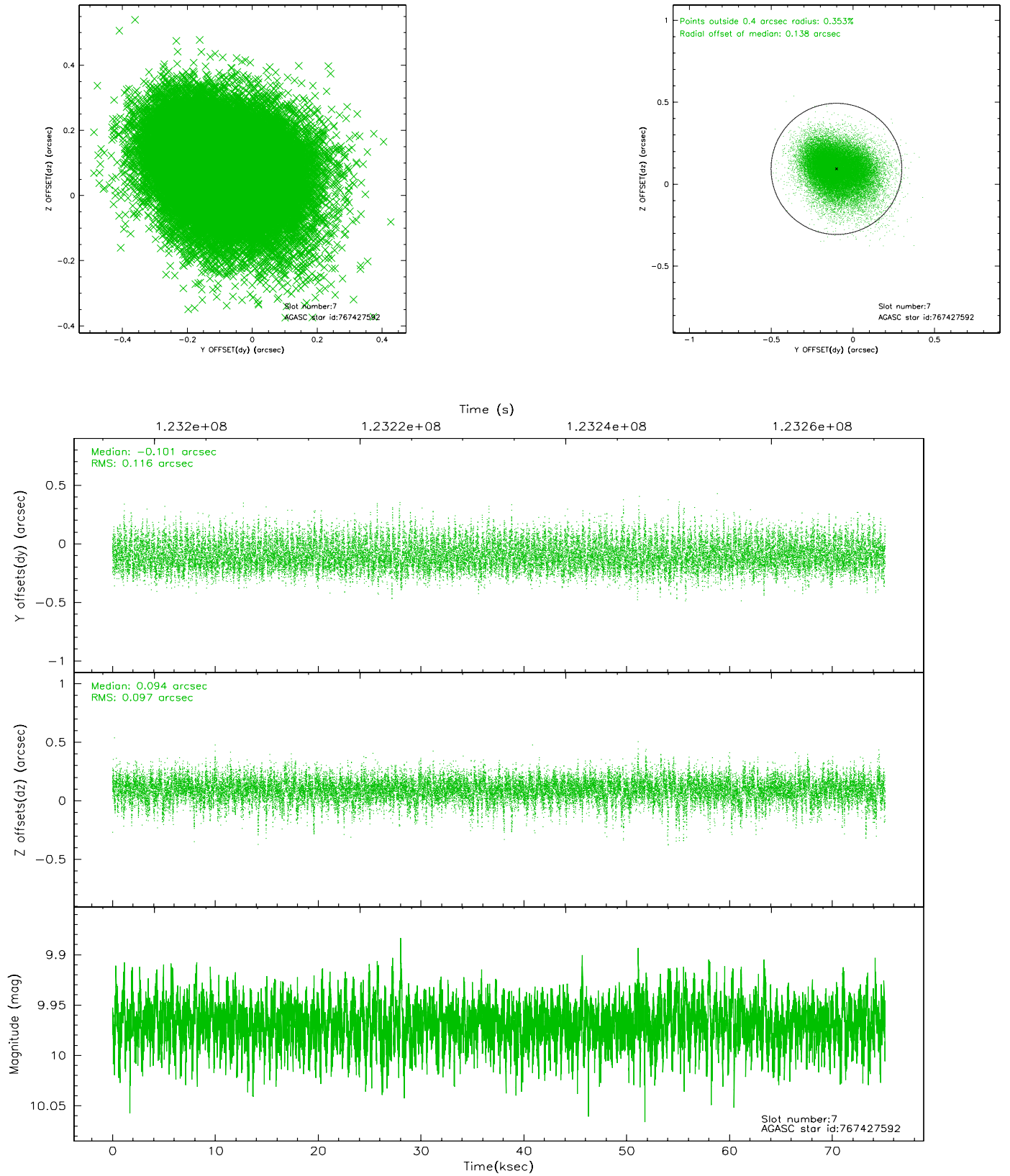


## 2.4.4 Slot 6



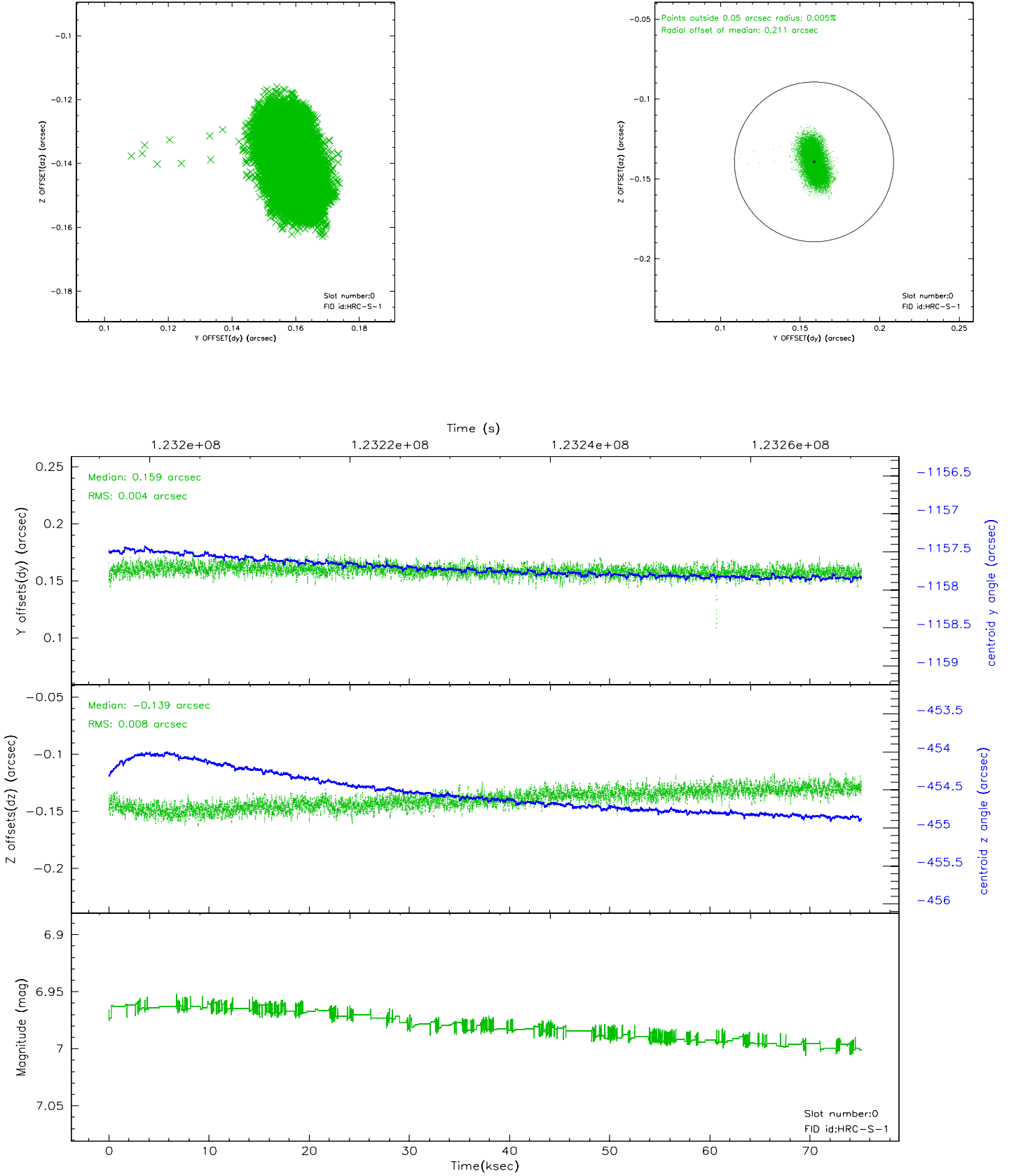


## 2.4.5 Slot 7

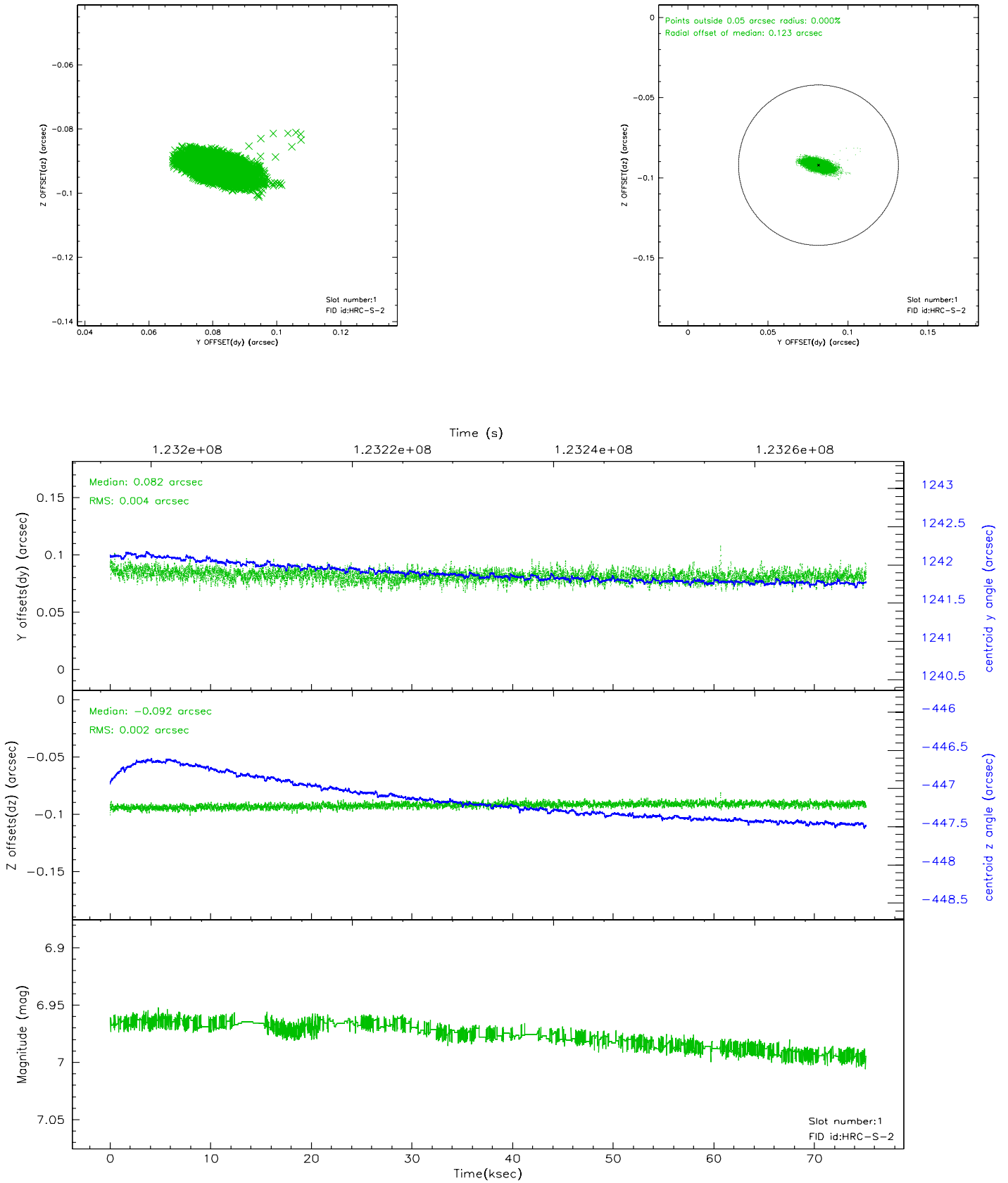


## 2.5 FID Slots

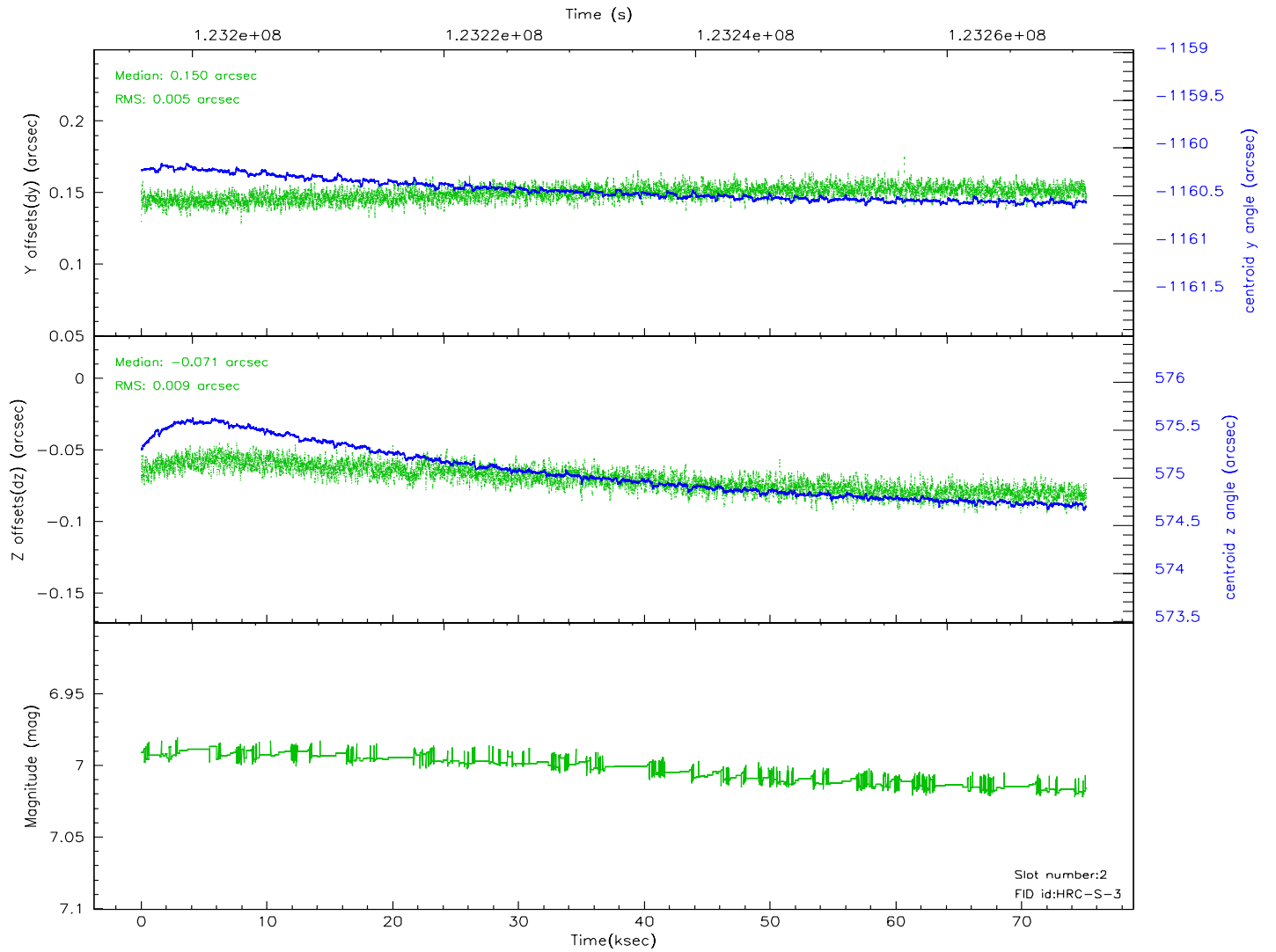
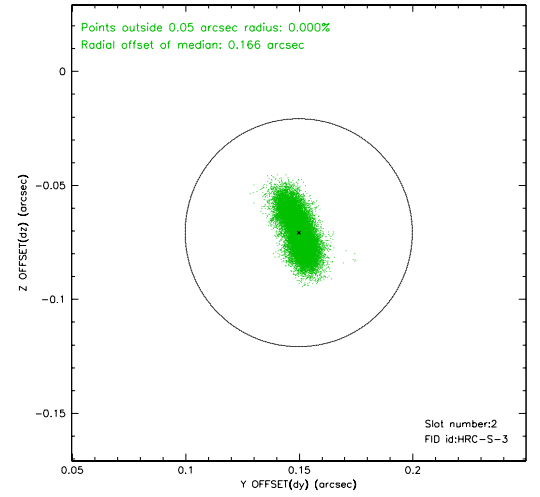
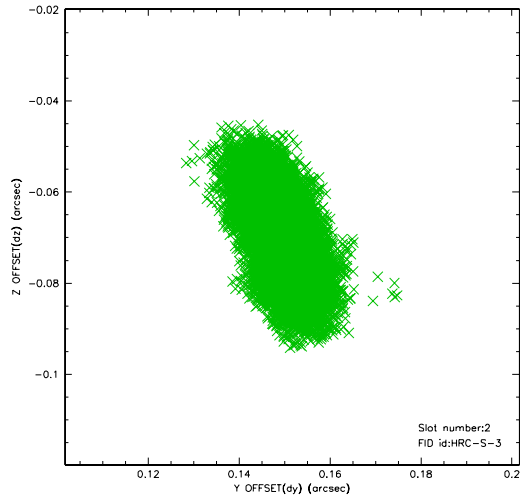
### 2.5.1 Slot 0



## 2.5.2 Slot 1

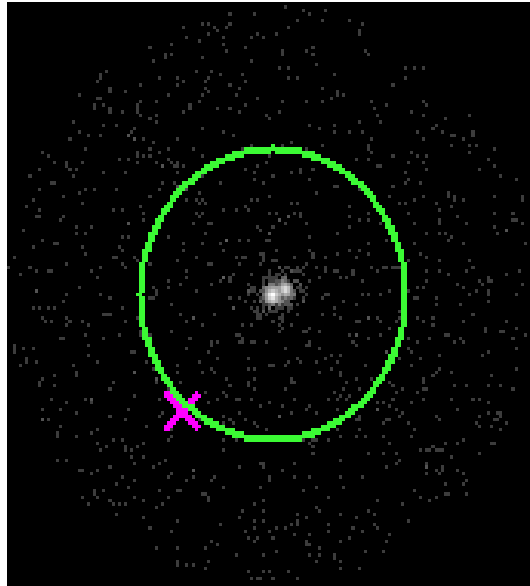


### 2.5.3 Slot 2



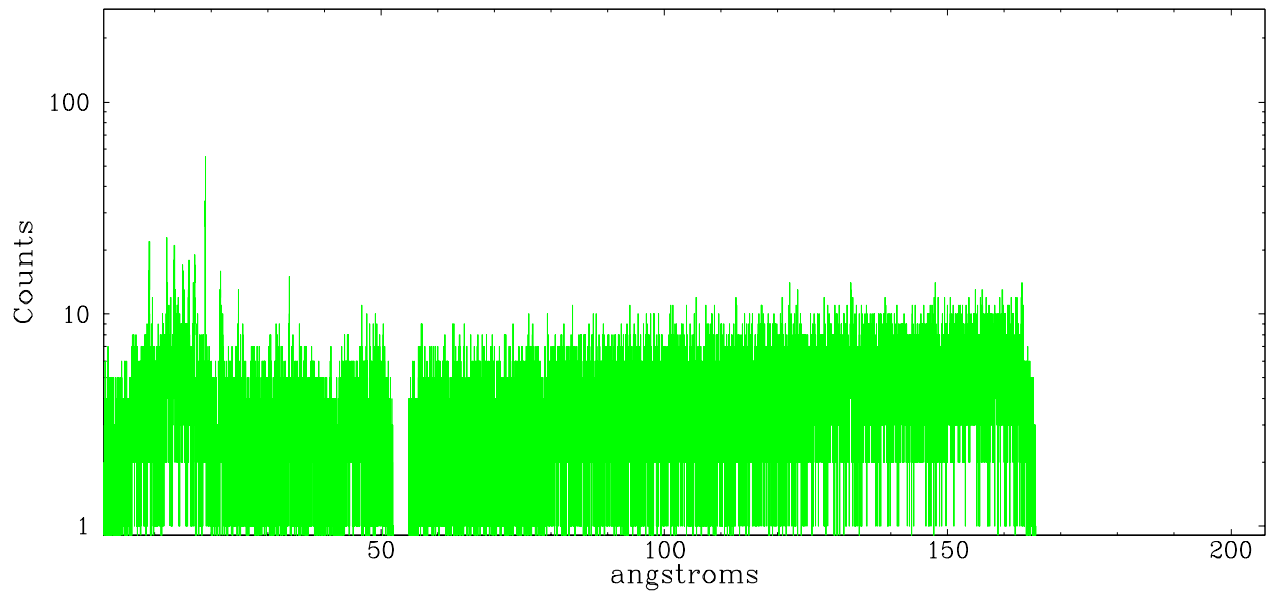
## 3 Gratings

### 3.1 LETG Arm

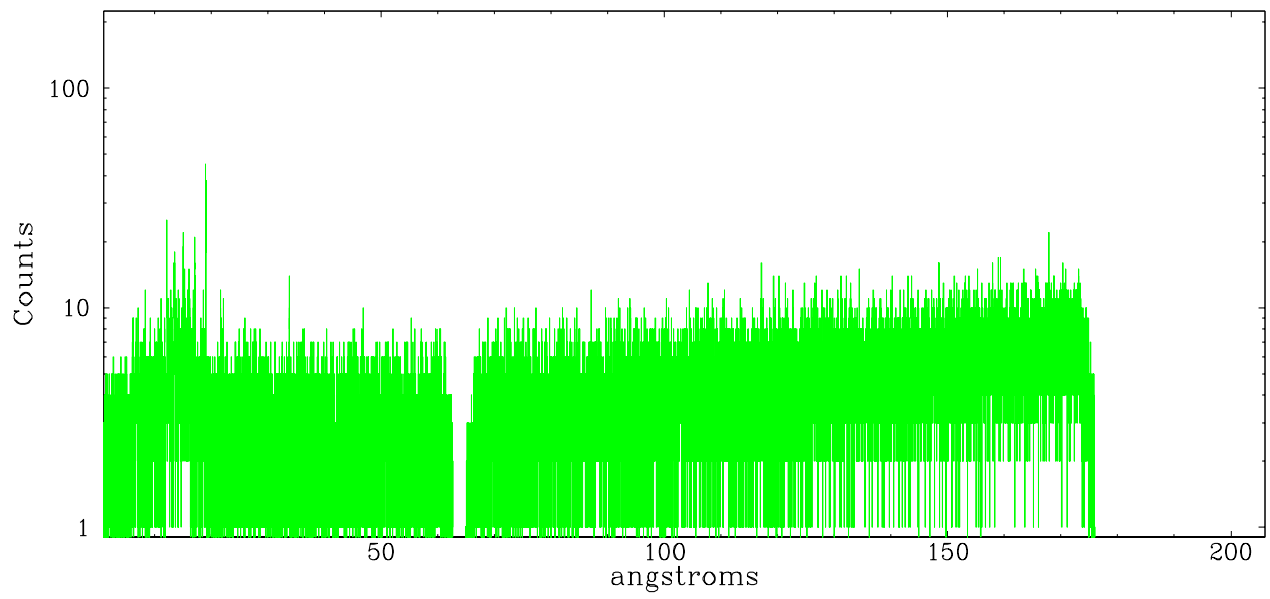


LETG Zero Order

leg order  $-1$



leg order  $+1$



# A Summary

## A.1 Status

V&V Scientist	Joy Nichols
V&V Date (YYYY-MM-DD)	2007.03.22
V&V Edition	1
V&V Disposition and Status	OK
V&V Charge Time	74.896

## A.2 Comments

Source is double. The observer requested the coordinates ra=01:39:01.88, dec=-17:57:00.84, which are the coordinates of the fainter of the two sources. The brighter source (UV Ceti) is at ra=01:39:01.972, dec=-17:57:01.33. The position of the brighter source was used as the zeroth order for extraction of the dispersed spectrum in these data products. If the user requires extracted spectral data with energy mapping appropriate to the fainter source (BL Ceti), the spectral data will need to be extracted again using these source coordinates.

There are several periods of enhanced count rate during the observation, probably due to a high radiation environment.